

File : c:/idx3/SYSTEM/SARMEAS3/data/Normal/00042619_ZOOM.VLT
Start : 26-Apr-100 04:48:03 pm End : 26-Apr-100 04:58:03 pm

Radio Type : SAMSUNG
Model Number : SCH-855
Serial Number : #02
Frequency : 824.04 MHz
Peak Trans. Pwr : 0.480 W
Start Trans. Pwr : 0.480 W
Antenna Type : Helical
Antenna Posn. : In
Phantom Type : Body
Phantom Posn. : Abdomen
Scan Type : ZOOM/SAR
Probe Name : PCTEST
Field Type : E Field
Orientation : 0 Degrees

Mixture Type = Muscle
Mixture Dielectric Constant = 51.700
Mixture Conductivity = 1.100

Comment :
SAMSUNG DUAL MODE PHONE FM MODE
CHAN 0991 SAR 26.8 dBm CONDUCTED
FCC ID A3LSCH855 body SAR FLIP MODE

Robot : PCTEST

Probe Offset = 0.25 cm
Sensor Factor = 0.0108
Conversion Factor = 0.894

PCTEST Amplifier Channel Settings : 0.166 0.135 0.132

Max Location : X = -3.000, Y = 0.000, Z = 0.000 (cm) Value = 15.662

Measured Values (volts) =
1.584E-002 1.267E-002 1.038E-002 8.520E-003 7.043E-003 6.149E-003
5.722E-003 5.522E-003 5.466E-003 5.267E-003 4.811E-003 4.055E-003
3.115E-003 2.258E-003 1.613E-003 1.209E-003 1.181E-003 1.447E-003
1.965E-003 2.149E-003 2.041E-003

Calc. Voltage @ Surface (Vs) = 0.0196

Voltage @ 1.00 cm (Vt) = 0.0085

Ave. Voltage (Vs+Vt)/2 = 0.0140

Ave. SAR over 1 g (mW/g) = 1.1625

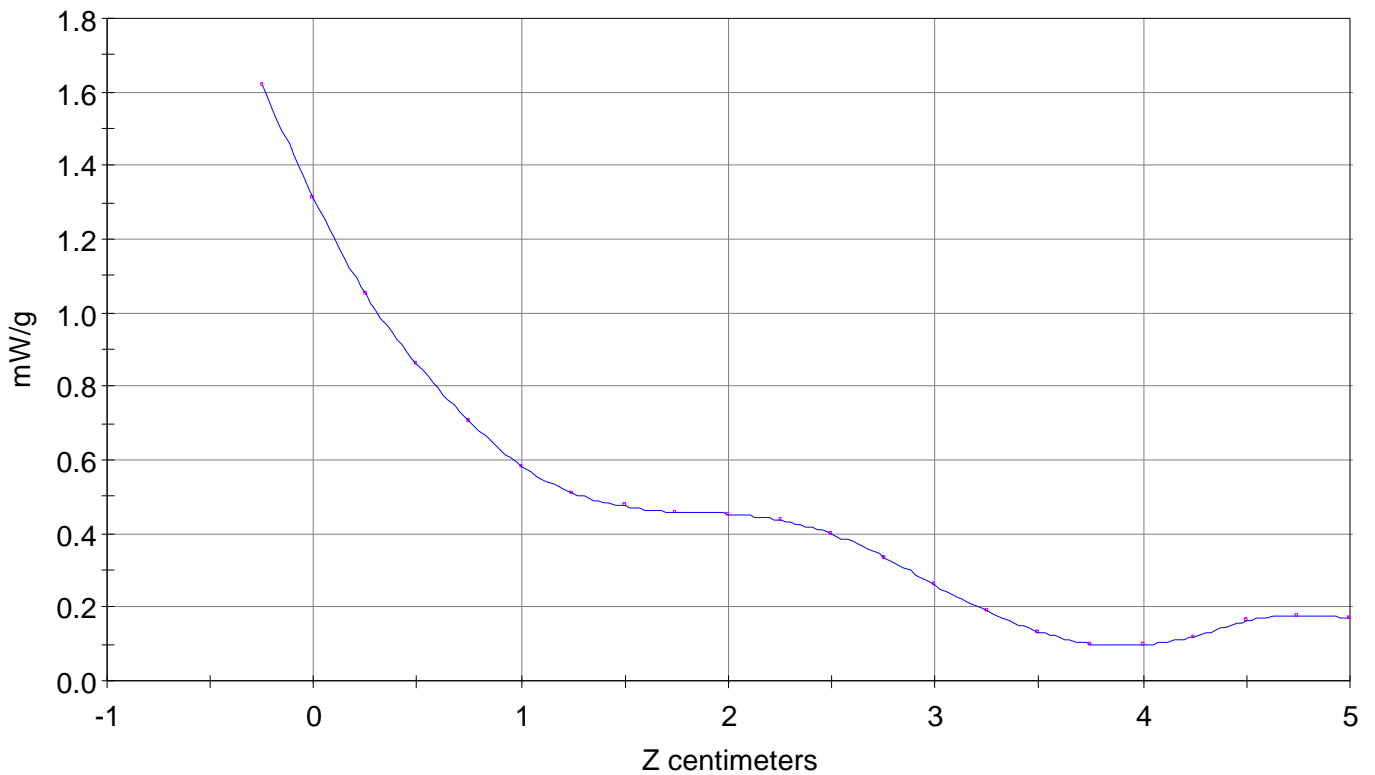
SAR Scan

File : 00042619_ZOOM

Start : 26-Apr-100 04:48:03 pm End : 26-Apr-100 04:58:03 pm

SAMSUNG/SCH-855/#02;824.04MHz;W;Helical/In;

Body/Abdomen;ZOOM/SAR;PCTEST/E Field/0 DegreesMuscle/51.700/1.100

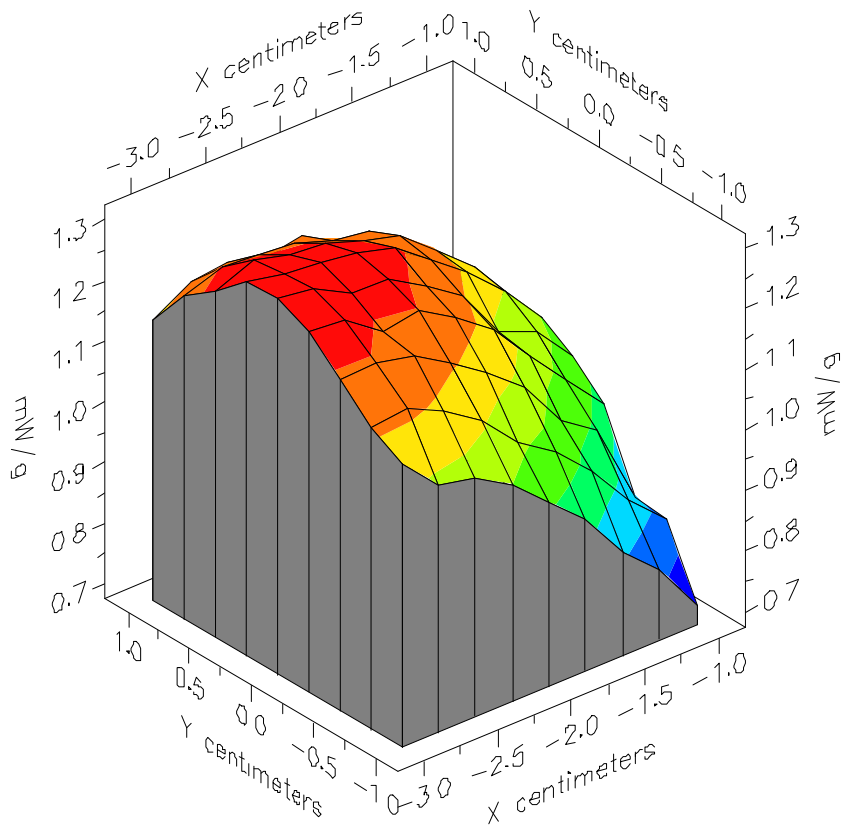


File : 00042619_ZOOM

Start : 26-Apr-100 04:48:03 pm End : 26-Apr-100 04:58:03 pm

SAMSUNG/SCH-855/#02;824.04MHz;W;Helical/In;

Body/Abdomen;ZOOM/SAR;PCTEST/E Field/0 DegreesMuscle/51.700/1.100

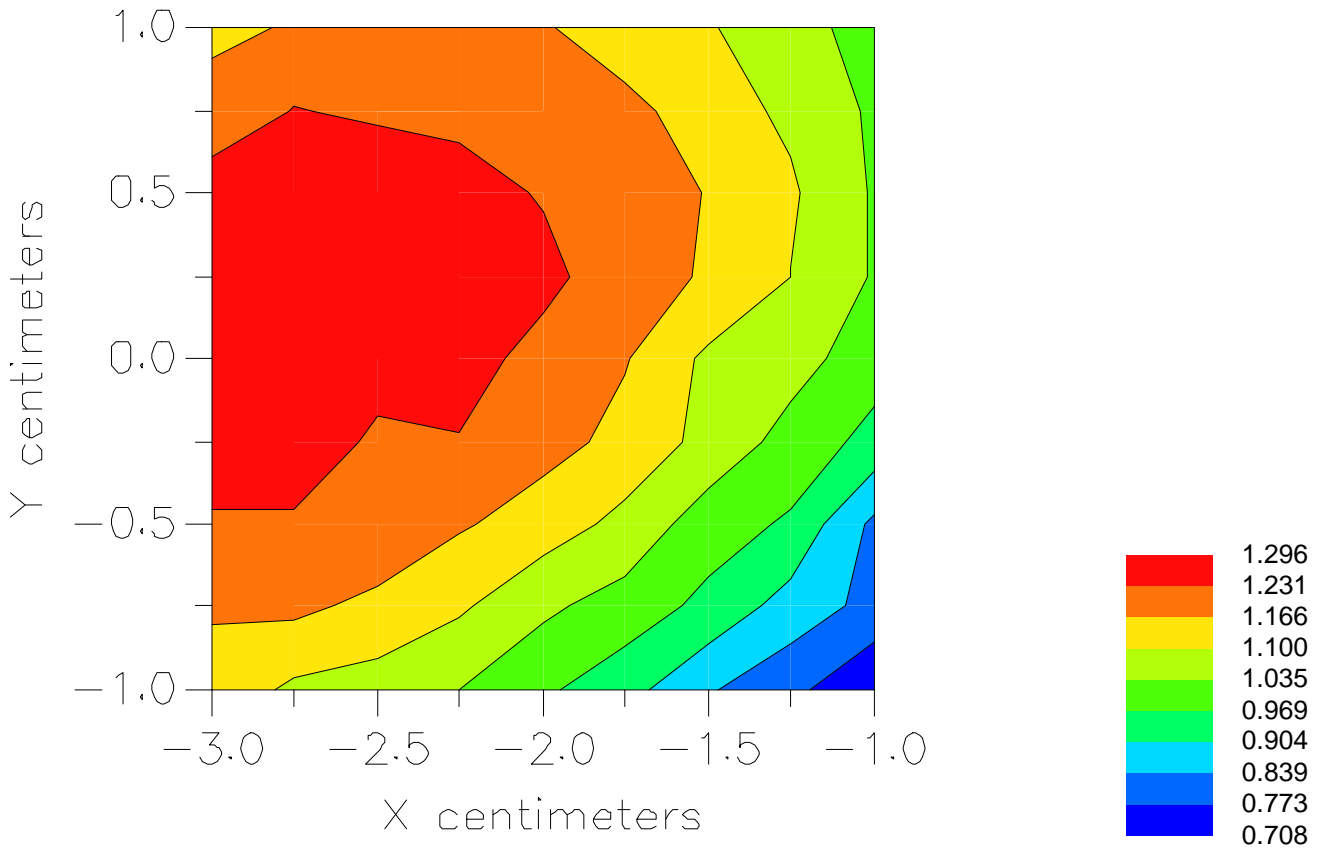


File : 00042619_ZOOM

Start : 26-Apr-100 04:48:03 pm End : 26-Apr-100 04:58:03 pm

SAMSUNG/SCH-855/#02;824.04MHz;W;Helical/In;

Body/Abdomen;ZOOM/SAR;PCTEST/E Field/0 DegreesMuscle/51.700/1.100



File : c:/idx3/SYSTEM/SARMEAS3/data/Normal/00042620_ZOOM.VLT
Start : 26-Apr-100 05:07:24 pm End : 26-Apr-100 05:14:49 pm

Radio Type : SAMSUNG
Model Number : SCH-855
Serial Number : #02
Frequency : 824.04 MHz
Peak Trans. Pwr : 0.480 W
Start Trans. Pwr : 0.480 W
Antenna Type : Helical
Antenna Posn. : Out
Phantom Type : Body
Phantom Posn. : Abdomen
Scan Type : ZOOM/SAR
Probe Name : PCTEST
Field Type : E Field
Orientation : 0 Degrees

Mixture Type = Muscle
Mixture Dielectric Constant = 51.700
Mixture Conductivity = 1.100

Comment :
SAMSUNG DUAL MODE PHONE FM MODE
CHAN 0991 SAR 26.8 dBm CONDUCTED
FCC ID A3LSCH855 body SAR FLIP MODE

Robot : PCTEST

Probe Offset = 0.25 cm
Sensor Factor = 0.0108
Conversion Factor = 0.894

PCTEST Amplifier Channel Settings : 0.166 0.135 0.132

Max Location : X = -3.000, Y = 0.250, Z = 0.000 (cm) Value = 16.442

Measured Values (volts) =
1.641E-002 1.302E-002 1.064E-002 8.796E-003 7.357E-003 6.381E-003
5.902E-003 5.783E-003 5.765E-003 5.592E-003 5.120E-003 4.371E-003
3.330E-003 2.399E-003 1.688E-003 1.300E-003 1.267E-003 1.514E-003
1.954E-003 2.392E-003 2.383E-003

Calc. Voltage @ Surface (Vs) = 0.0204

Voltage @ 1.00 cm (Vt) = 0.0088

Ave. Voltage (Vs+Vt)/2 = 0.0146

Ave. SAR over 1 g (mW/g) = 1.2074

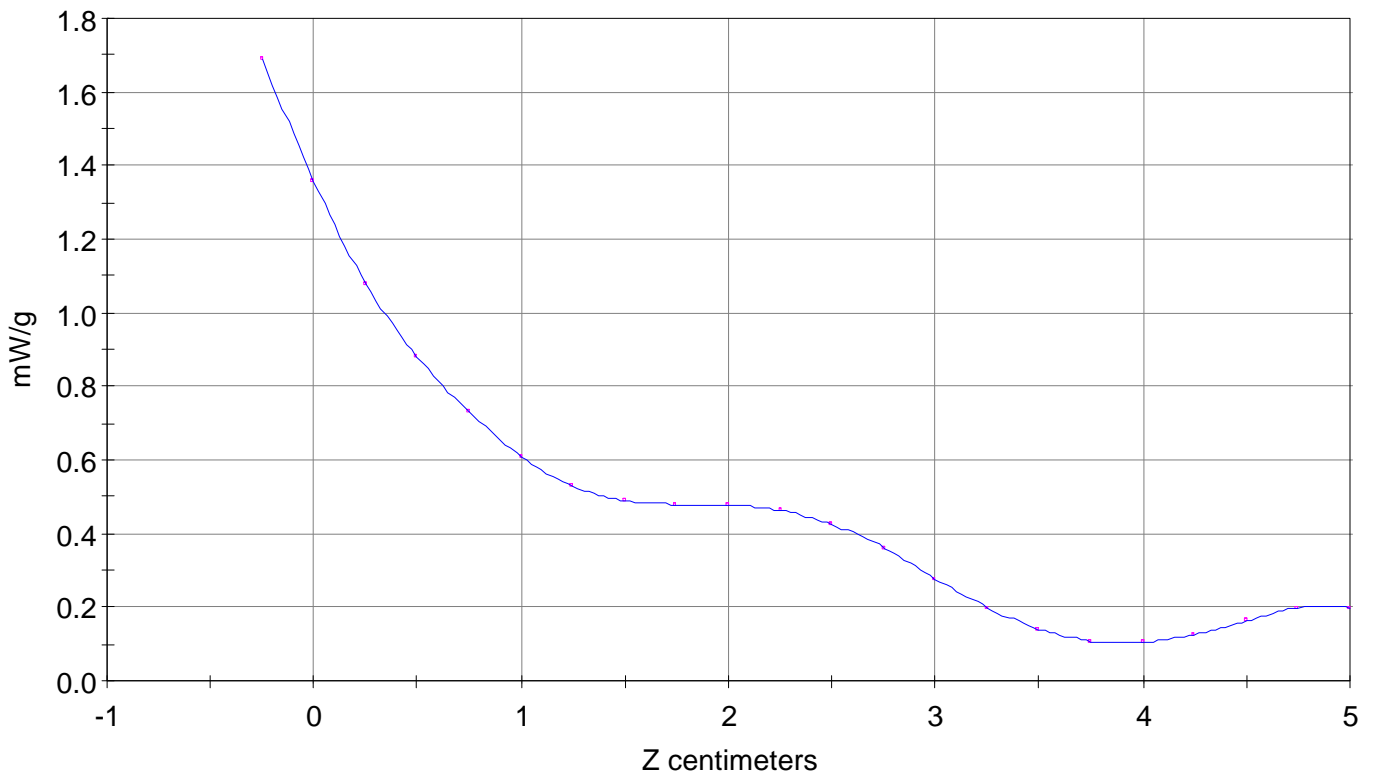
SAR Scan

File : 00042620_ZOOM

Start : 26-Apr-100 05:07:24 pm End : 26-Apr-100 05:14:49 pm

SAMSUNG/SCH-855/#02;824.04MHz;W;Helical/Out;

Body/Abdomen;ZOOM/SAR;PCTEST/E Field/0 DegreesMuscle/51.700/1.100

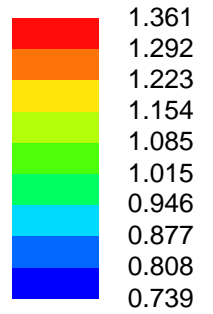
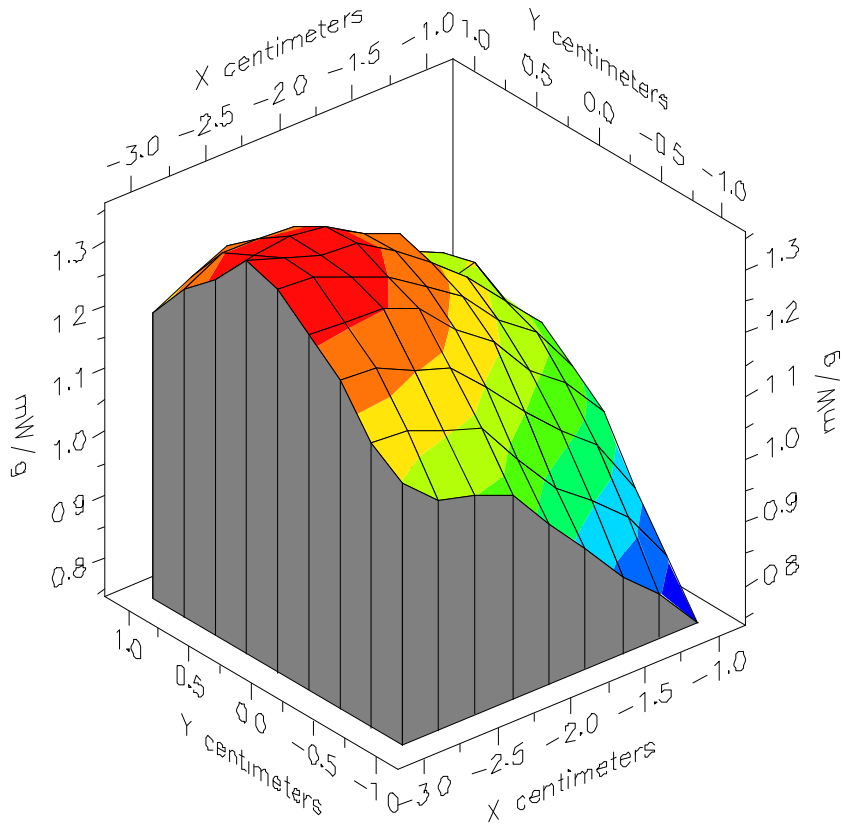


File : 00042620_ZOOM

Start : 26-Apr-100 05:07:24 pm End : 26-Apr-100 05:14:49 pm

SAMSUNG/SCH-855/#02;824.04MHz;W;Helical/Out;

Body/Abdomen;ZOOM/SAR;PCTEST/E Field/0 DegreesMuscle/51.700/1.100

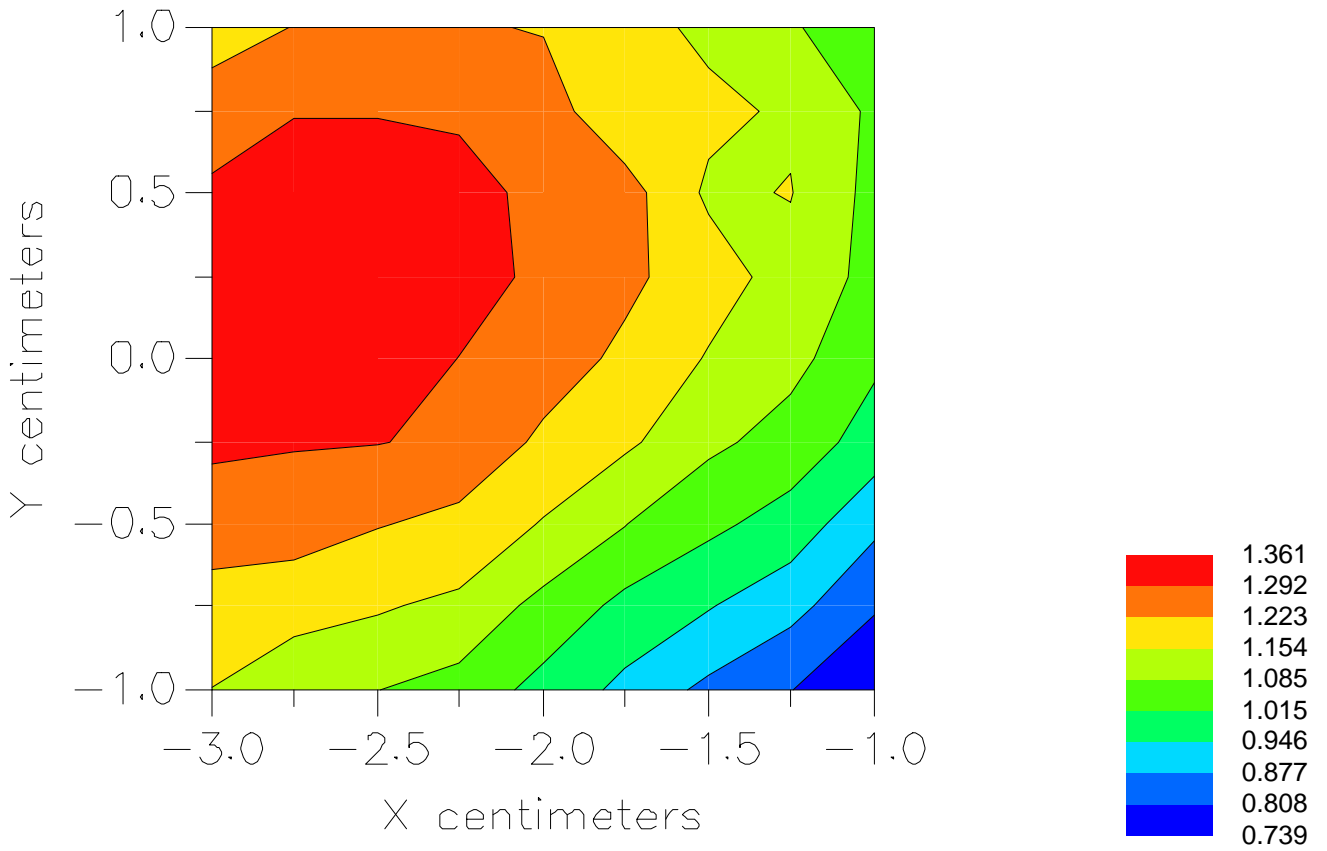


File : 00042620_ZOOM

Start : 26-Apr-100 05:07:24 pm End : 26-Apr-100 05:14:49 pm

SAMSUNG/SCH-855/#02;824.04MHz;W;Helical/Out;

Body/Abdomen;ZOOM/SAR;PCTEST/E Field/0 DegreesMuscle/51.700/1.100



File : c:/idx3/SYSTEM/SARMEAS3/data/Normal/00042623_ZOOM.VLT
Start : 26-Apr-100 05:58:45 pm End : 26-Apr-100 06:06:09 pm

Radio Type : SAMSUNG
Model Number : SCH-855
Serial Number : #02
Frequency : 836.49 MHz
Peak Trans. Pwr : 0.480 W
Start Trans. Pwr : 0.480 W
Antenna Type : Helical
Antenna Posn. : In
Phantom Type : Body
Phantom Posn. : Abdomen
Scan Type : ZOOM/SAR
Probe Name : PCTEST
Field Type : E Field
Orientation : 0 Degrees

Mixture Type = Muscle
Mixture Dielectric Constant = 51.700
Mixture Conductivity = 1.100

Comment :
SAMSUNG DUAL MODE PHONE FM MODE
CHAN 0383 SAR 26.8 dBm CONDUCTED
FCC ID A3LSCH855 body SAR FLIP MODE

Robot : PCTEST

Probe Offset = 0.25 cm
Sensor Factor = 0.0108
Conversion Factor = 0.894

PCTEST Amplifier Channel Settings : 0.166 0.135 0.132

Max Location : X = -2.500, Y = 0.000, Z = 0.000 (cm) Value = 16.400

Measured Values (volts) =
1.589E-002 1.265E-002 1.042E-002 8.706E-003 7.197E-003 6.365E-003
5.840E-003 5.786E-003 5.744E-003 5.613E-003 5.154E-003 4.454E-003
3.513E-003 2.547E-003 1.792E-003 1.330E-003 1.195E-003 1.372E-003
1.821E-003 2.318E-003 2.374E-003

Calc. Voltage @ Surface (Vs) = 0.0196

Voltage @ 1.00 cm (Vt) = 0.0087

Ave. Voltage (Vs+Vt)/2 = 0.0142

Ave. SAR over 1 g (mW/g) = 1.1728

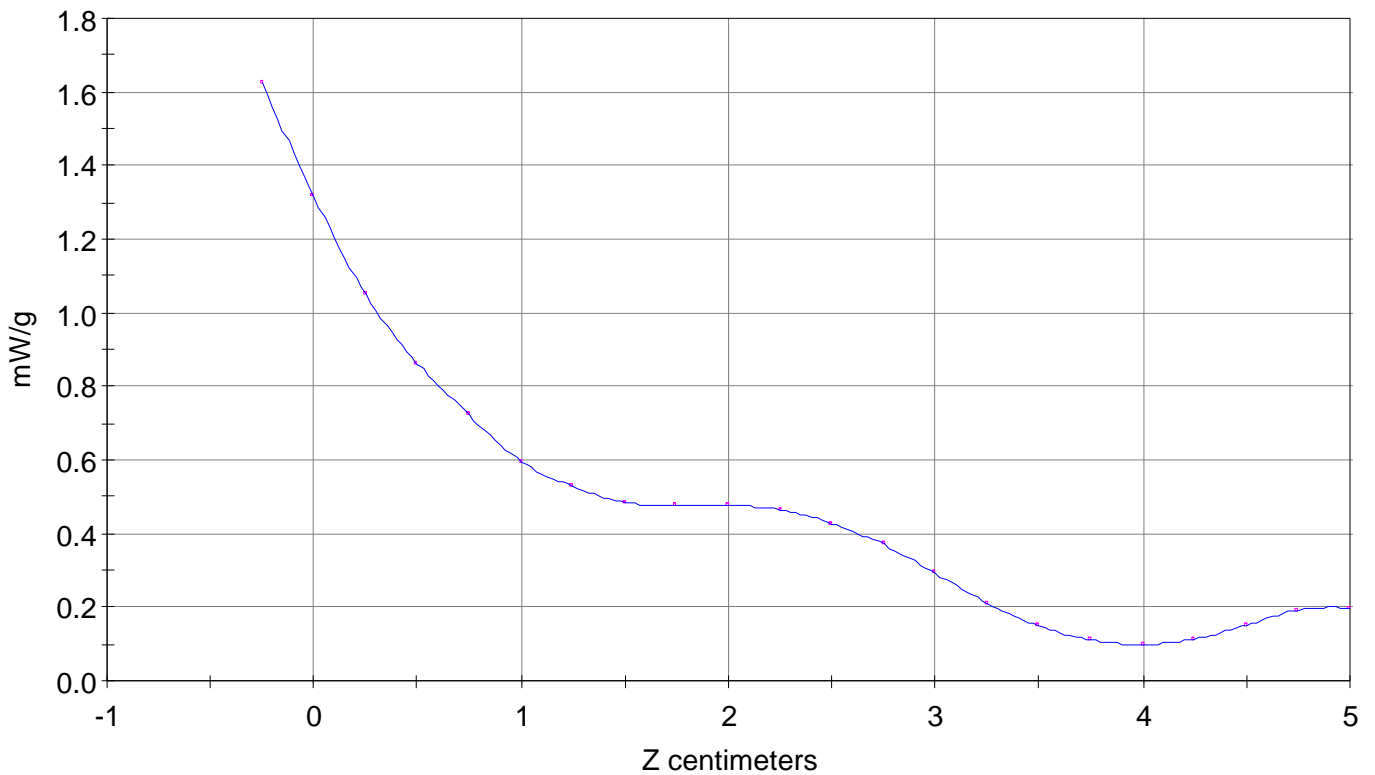
SAR Scan

File : 00042623_ZOOM

Start : 26-Apr-100 05:58:45 pm End : 26-Apr-100 06:06:09 pm

SAMSUNG/SCH-855/#02;836.49MHz;W;Helical/In;

Body/Abdomen;ZOOM/SAR;PCTEST/E Field/0 DegreesMuscle/51.700/1.100

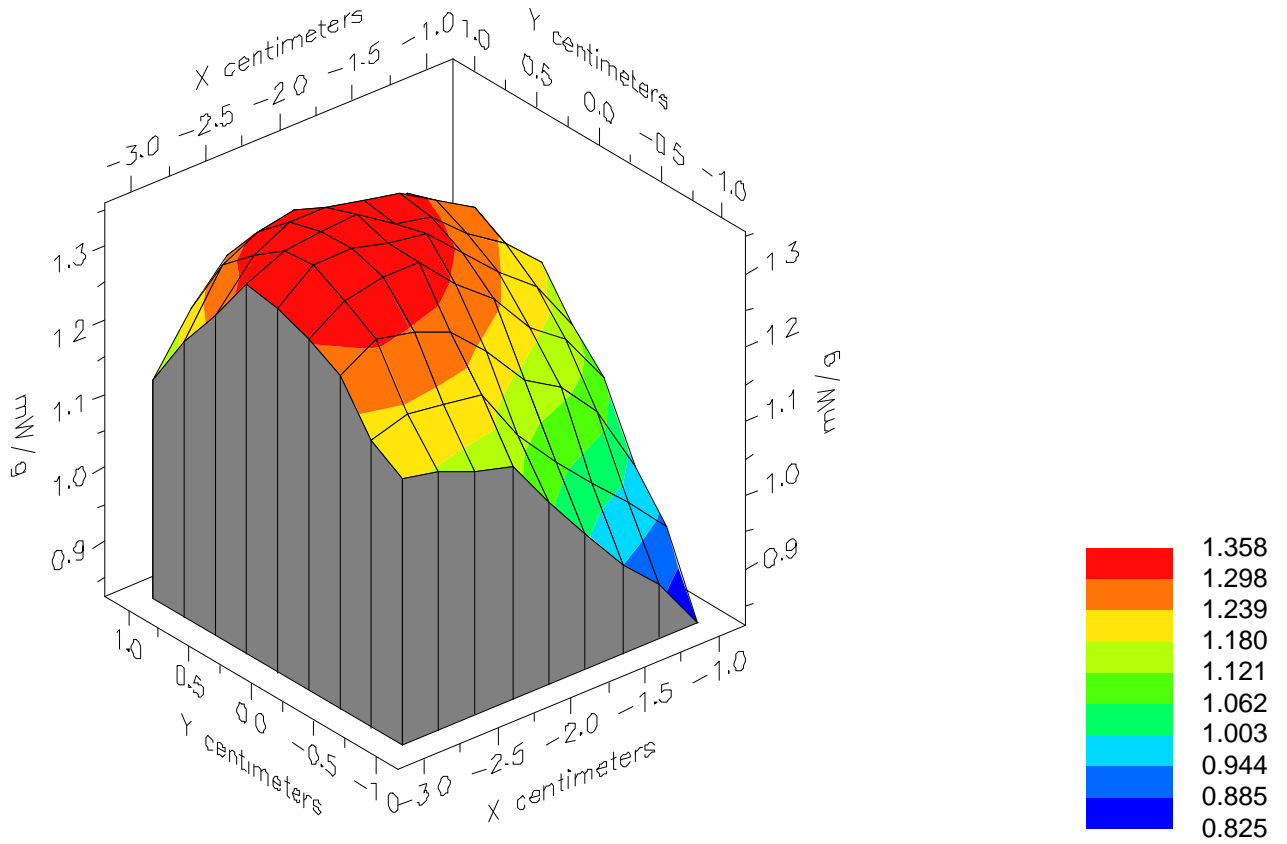


File : 00042623_ZOOM

Start : 26-Apr-100 05:58:45 pm End : 26-Apr-100 06:06:09 pm

SAMSUNG/SCH-855/#02;836.49MHz;W;Helical/In;

Body/Abdomen;ZOOM/SAR;PCTEST/E Field/0 DegreesMuscle/51.700/1.100

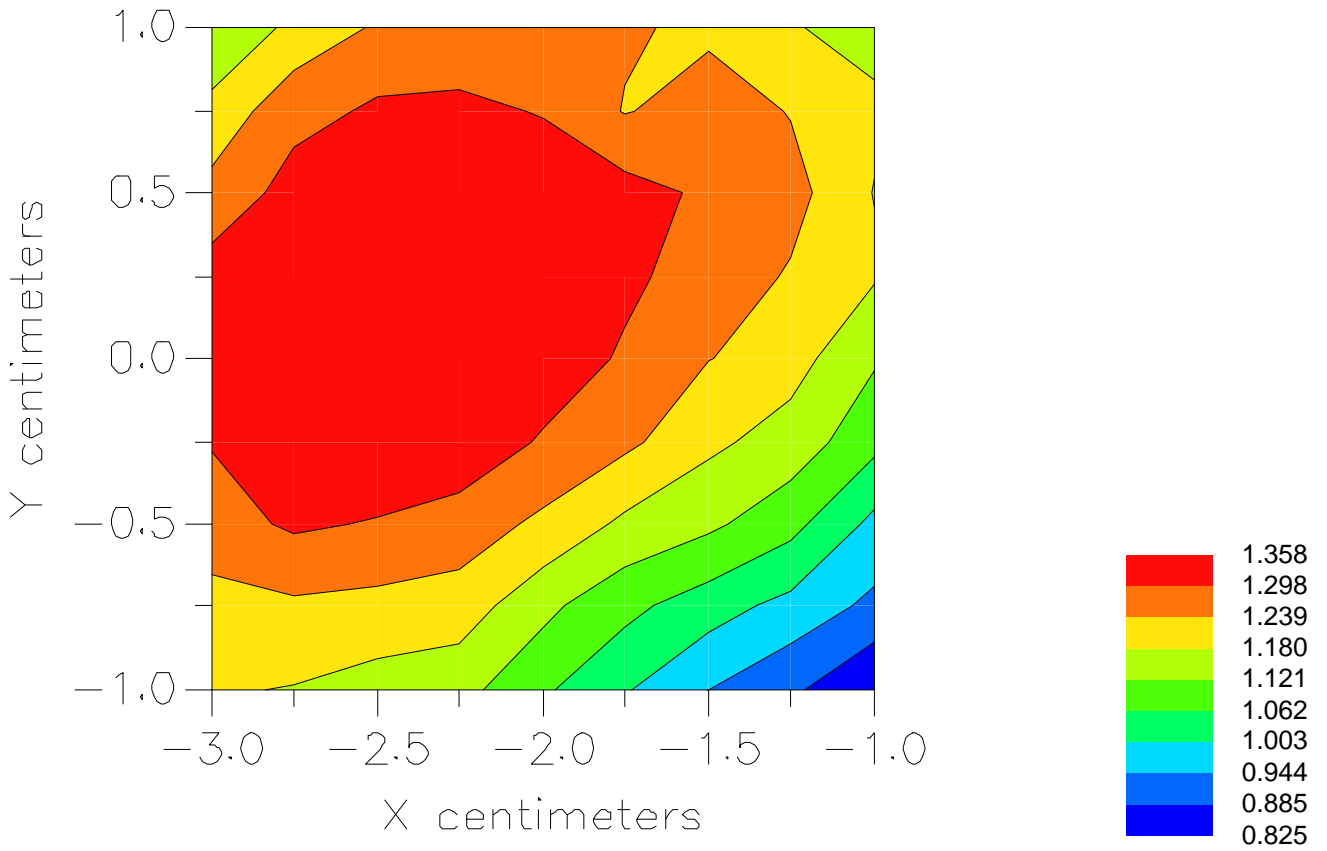


File : 00042623_ZOOM

Start : 26-Apr-100 05:58:45 pm End : 26-Apr-100 06:06:09 pm

SAMSUNG/SCH-855/#02;836.49MHz;W;Helical/In;

Body/Abdomen;ZOOM/SAR;PCTEST/E Field/0 DegreesMuscle/51.700/1.100



File : c:/idx3/SYSTEM/SARMEAS3/data/Normal/00042621_ZOOM.VLT
Start : 26-Apr-100 05:24:48 pm End : 26-Apr-100 05:32:11 pm

Radio Type : SAMSUNG
Model Number : SCH-855
Serial Number : #02
Frequency : 836.49 MHz
Peak Trans. Pwr : 0.480 W
Start Trans. Pwr : 0.480 W
Antenna Type : Helical
Antenna Posn. : Out
Phantom Type : Body
Phantom Posn. : Abdomen
Scan Type : ZOOM/SAR
Probe Name : PCTEST
Field Type : E Field
Orientation : 0 Degrees

Mixture Type = Muscle
Mixture Dielectric Constant = 51.700
Mixture Conductivity = 1.100

Comment :
SAMSUNG DUAL MODE PHONE FM MODE
CHAN 0383 SAR 26.8 dBm CONDUCTED
FCC ID A3LSCH855 body SAR FLIP MODE

Robot : PCTEST

Probe Offset = 0.25 cm
Sensor Factor = 0.0108
Conversion Factor = 0.894

PCTEST Amplifier Channel Settings : 0.166 0.135 0.132

Max Location : X = -3.000, Y = 0.250, Z = 0.000 (cm) Value = 16.438

Measured Values (volts) =
1.646E-002 1.312E-002 1.082E-002 8.868E-003 7.390E-003 6.417E-003
5.946E-003 5.791E-003 5.763E-003 5.611E-003 5.147E-003 4.363E-003
3.368E-003 2.419E-003 1.731E-003 1.309E-003 1.249E-003 1.515E-003
1.962E-003 2.409E-003 2.390E-003

Calc. Voltage @ Surface (Vs) = 0.0203

Voltage @ 1.00 cm (Vt) = 0.0089

Ave. Voltage (Vs+Vt)/2 = 0.0146

Ave. SAR over 1 g (mW/g) = 1.2077

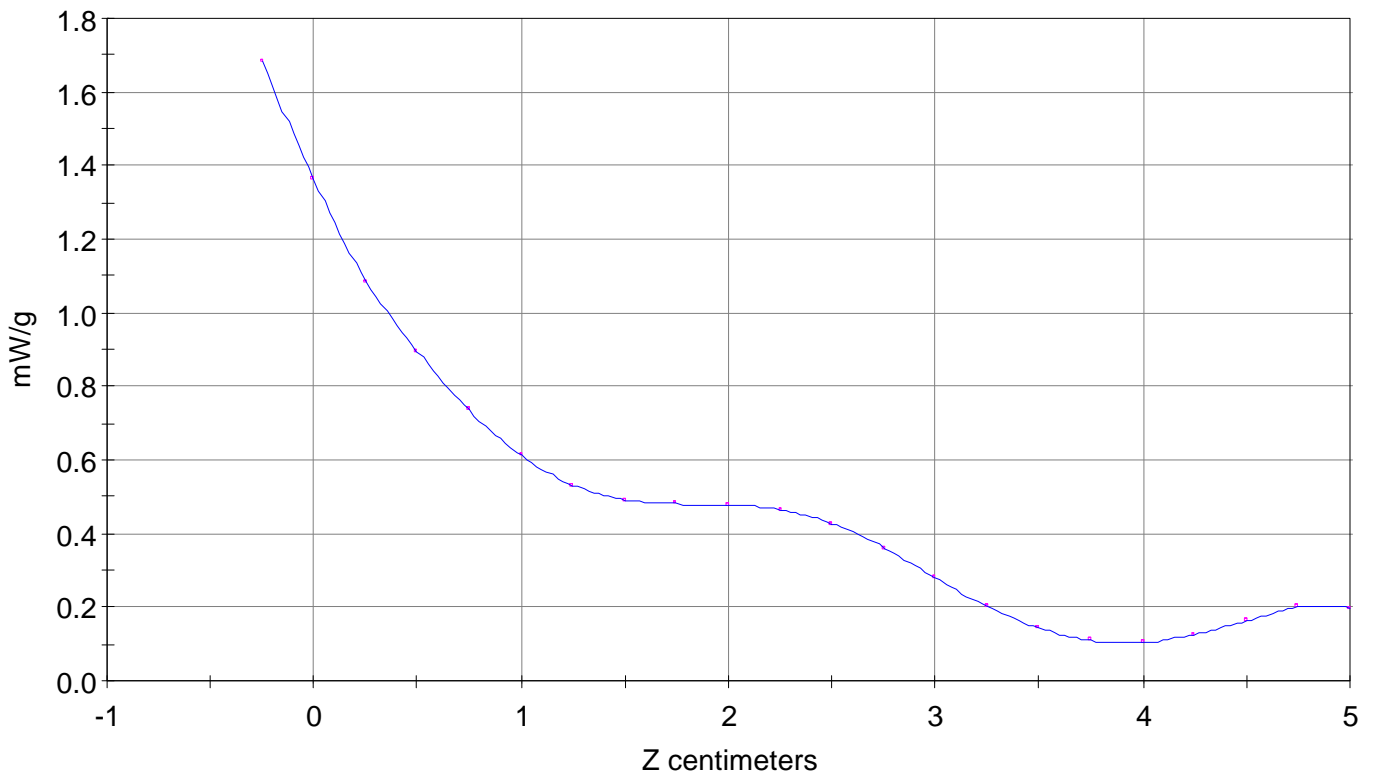
SAR Scan

File : 00042621_ZOOM

Start : 26-Apr-100 05:24:48 pm End : 26-Apr-100 05:32:11 pm

SAMSUNG/SCH-855/#02;836.49MHz;W;Helical/Out;

Body/Abdomen;ZOOM/SAR;PCTEST/E Field/0 DegreesMuscle/51.700/1.100

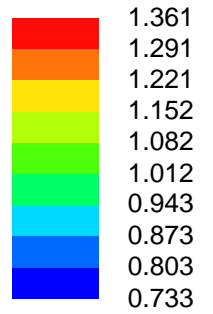
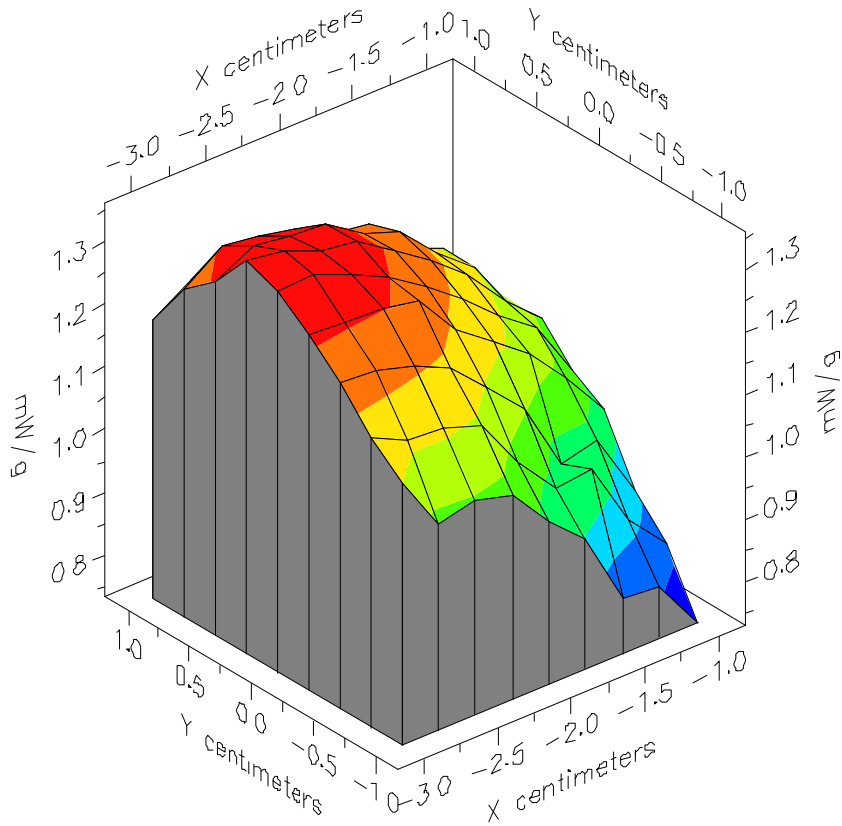


File : 00042621_ZOOM

Start : 26-Apr-100 05:24:48 pm End : 26-Apr-100 05:32:11 pm

SAMSUNG/SCH-855/#02;836.49MHz;W;Helical/Out;

Body/Abdomen;ZOOM/SAR;PCTEST/E Field/0 DegreesMuscle/51.700/1.100

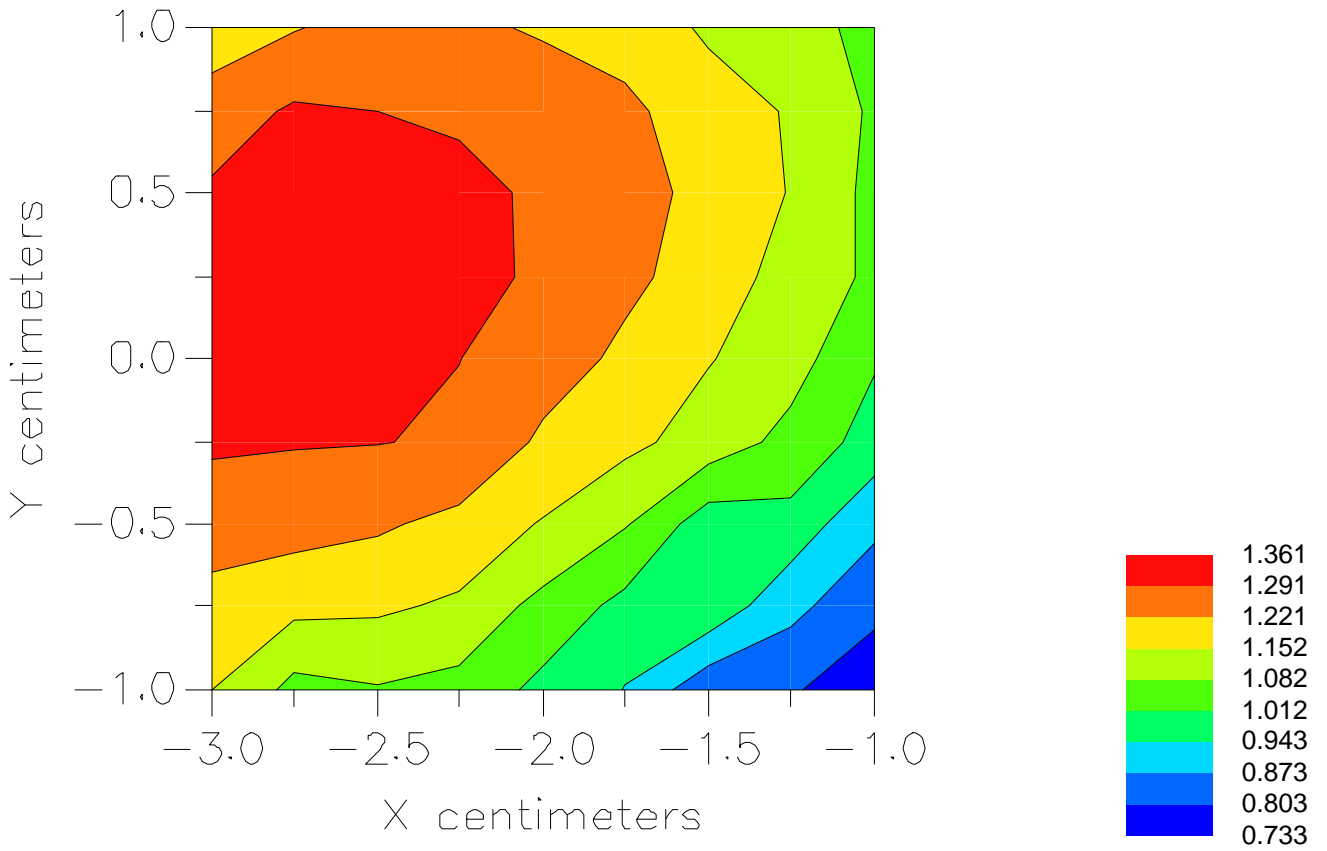


File : 00042621_ZOOM

Start : 26-Apr-100 05:24:48 pm End : 26-Apr-100 05:32:11 pm

SAMSUNG/SCH-855/#02;836.49MHz;W;Helical/Out;

Body/Abdomen;ZOOM/SAR;PCTEST/E Field/0 DegreesMuscle/51.700/1.100



File : c:/idx3/SYSTEM/SARMEAS3/data/Normal/00042616_ZOOM.VLT
Start : 26-Apr-100 04:04:31 pm End : 26-Apr-100 04:12:21 pm

Radio Type : SAMSUNG
Model Number : SCH-855
Serial Number : #02
Frequency : 848.97 MHz
Peak Trans. Pwr : 0.480 W
Start Trans. Pwr : 0.480 W
Antenna Type : Helical
Antenna Posn. : In
Phantom Type : Body
Phantom Posn. : Abdomen
Scan Type : ZOOM/SAR
Probe Name : PCTEST
Field Type : E Field
Orientation : 0 Degrees

Mixture Type = Muscle
Mixture Dielectric Constant = 51.700
Mixture Conductivity = 1.100

Comment :
SAMSUNG DUAL MODE PHONE FM MODE
CHAN 0799 SAR 26.8 dBm CONDUCTED
FCC ID A3LSCH855 body SAR FLIP MODE

Robot : PCTEST

Probe Offset = 0.25 cm
Sensor Factor = 0.0108
Conversion Factor = 0.894

PCTEST Amplifier Channel Settings : 0.166 0.135 0.132

Max Location : X = -0.750, Y = -1.500, Z = 0.000 (cm) Value = 14.547

Measured Values (volts) =
1.419E-002 1.167E-002 9.608E-003 7.954E-003 6.738E-003 5.697E-003
5.086E-003 4.840E-003 4.706E-003 4.644E-003 4.429E-003 4.008E-003
3.339E-003 2.525E-003 1.845E-003 1.322E-003 1.116E-003 1.047E-003
1.134E-003 1.436E-003 1.748E-003

Calc. Voltage @ Surface (Vs) = 0.0172

Voltage @ 1.00 cm (Vt) = 0.0080

Ave. Voltage (Vs+Vt)/2 = 0.0126

Ave. SAR over 1 g (mW/g) = 1.0426

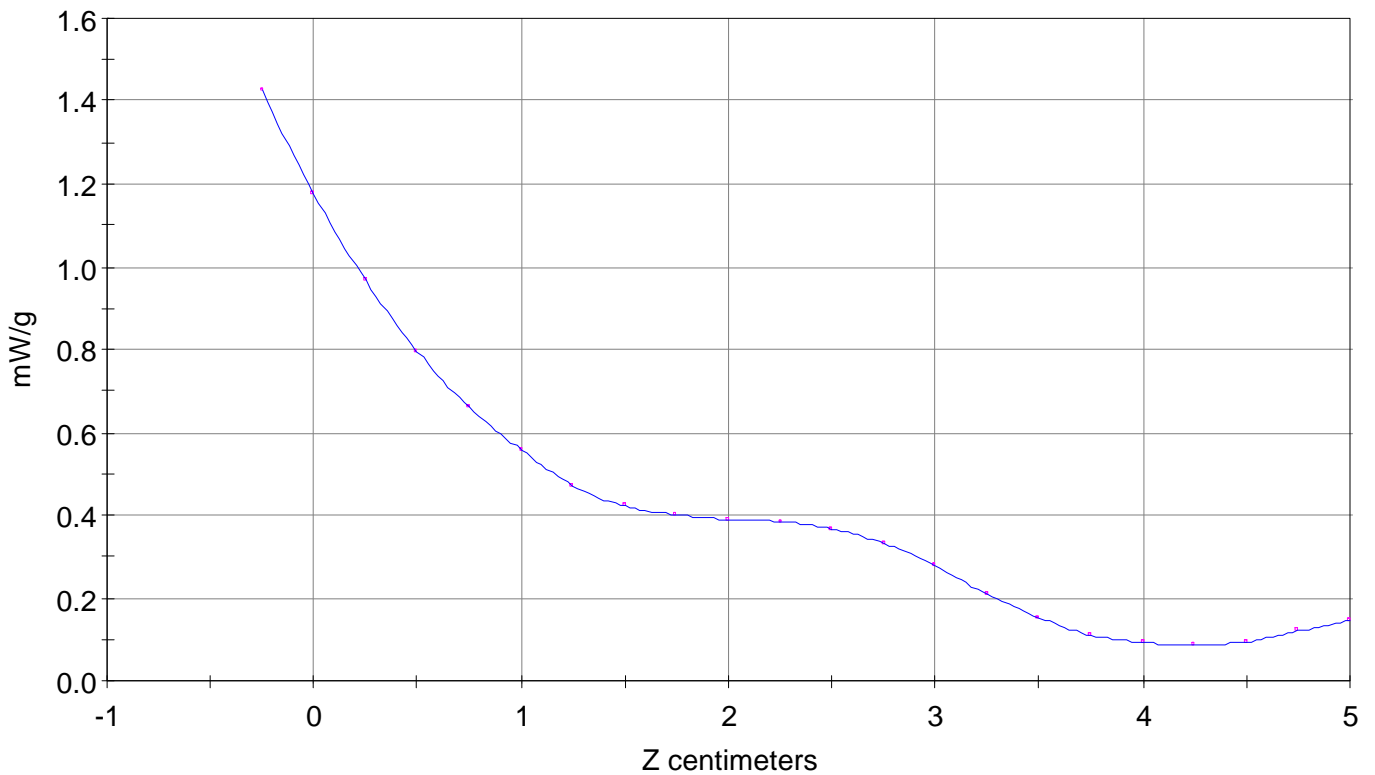
SAR Scan

File : 00042616_ZOOM

Start : 26-Apr-100 04:04:31 pm End : 26-Apr-100 04:12:21 pm

SAMSUNG/SCH-855/#02;848.97MHz;W;Helical/In;

Body/Abdomen;ZOOM/SAR;PCTEST/E Field/0 DegreesMuscle/51.700/1.100

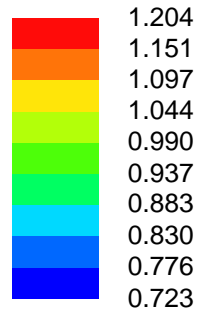
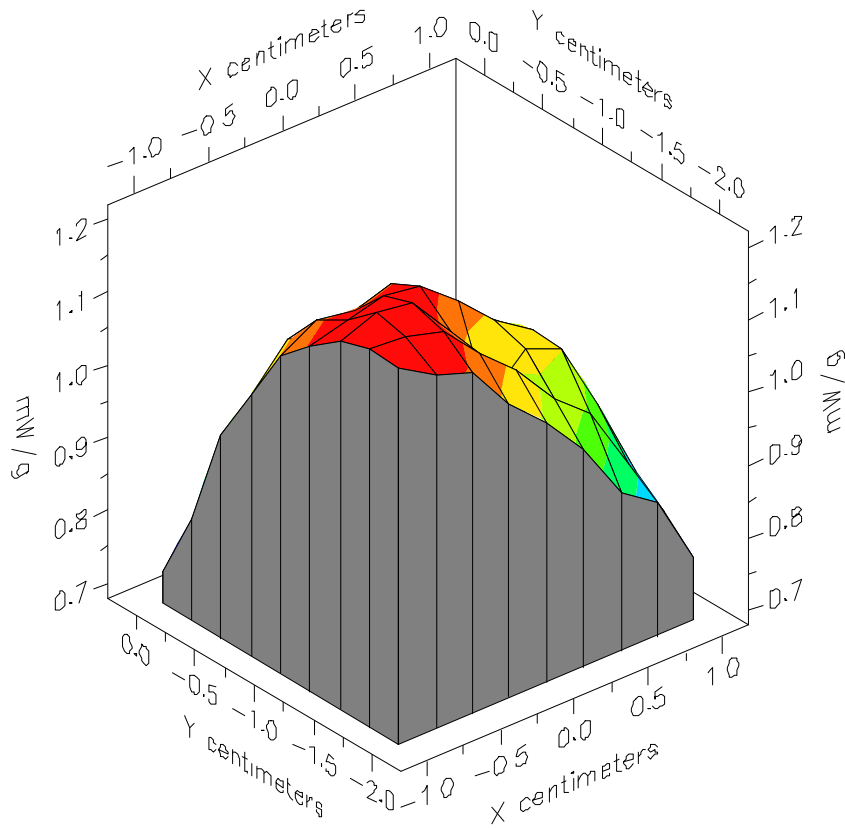


File : 00042616_ZOOM

Start : 26-Apr-100 04:04:31 pm End : 26-Apr-100 04:12:21 pm

SAMSUNG/SCH-855/#02;848.97MHz;W;Helical/In;

Body/Abdomen;ZOOM/SAR;PCTEST/E Field/0 DegreesMuscle/51.700/1.100

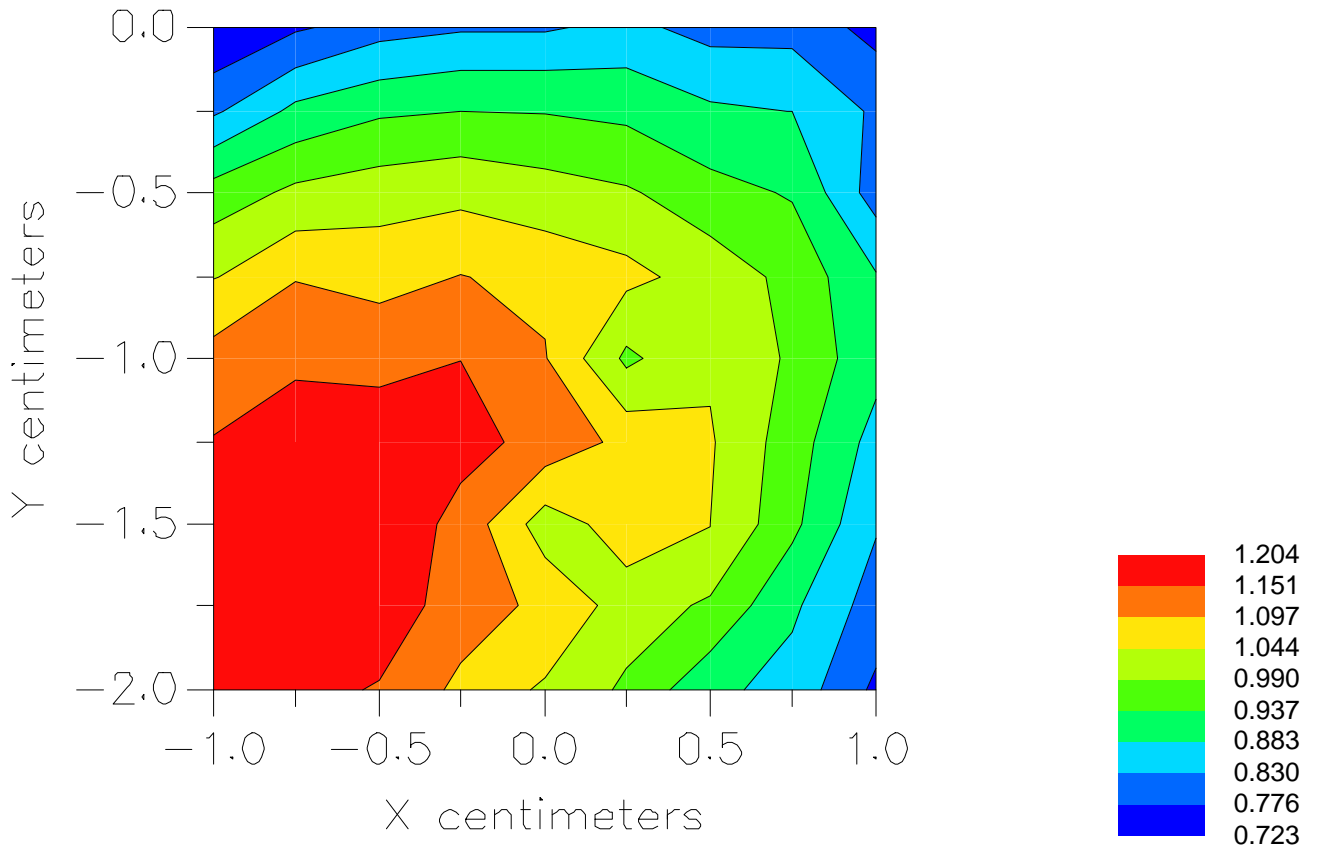


File : 00042616_ZOOM

Start : 26-Apr-100 04:04:31 pm End : 26-Apr-100 04:12:21 pm

SAMSUNG/SCH-855/#02;848.97MHz;W;Helical/In;

Body/Abdomen;ZOOM/SAR;PCTEST/E Field/0 DegreesMuscle/51.700/1.100



File : c:/idx3/SYSTEM/SARMEAS3/data/Normal/00042615_ZOOM.VLT
Start : 26-Apr-100 03:37:47 pm End : 26-Apr-100 03:48:23 pm

Radio Type : SAMSUNG
Model Number : SCH-855
Serial Number : #02
Frequency : 848.97 MHz
Peak Trans. Pwr : 0.480 W
Start Trans. Pwr : 0.480 W
Antenna Type : Helical
Antenna Posn. : Out
Phantom Type : Body
Phantom Posn. : Abdomen
Scan Type : ZOOM/SAR
Probe Name : PCTEST
Field Type : E Field
Orientation : 0 Degrees

Mixture Type = Muscle
Mixture Dielectric Constant = 51.700
Mixture Conductivity = 1.100

Comment :
SAMSUNG DUAL MODE PHONE FM MODE
CHAN 0799 SAR 26.8 dBm CONDUCTED
FCC ID A3LSCH855 body SAR FLIP MODE

Robot : PCTEST

Probe Offset = 0.25 cm
Sensor Factor = 0.0108
Conversion Factor = 0.894

PCTEST Amplifier Channel Settings : 0.166 0.135 0.132

Max Location : X = -1.000, Y = -1.500, Z = 0.000 (cm) Value = 14.330

Measured Values (volts) =
1.422E-002 1.224E-002 9.959E-003 8.173E-003 6.725E-003 5.761E-003
5.140E-003 4.888E-003 4.854E-003 4.830E-003 4.731E-003 4.334E-003
3.607E-003 2.829E-003 2.067E-003 1.469E-003 1.214E-003 1.118E-003
1.241E-003 1.576E-003 1.977E-003

Calc. Voltage @ Surface (Vs) = 0.0170

Voltage @ 1.00 cm (Vt) = 0.0082

Ave. Voltage (Vs+Vt)/2 = 0.0126

Ave. SAR over 1 g (mW/g) = 1.0419

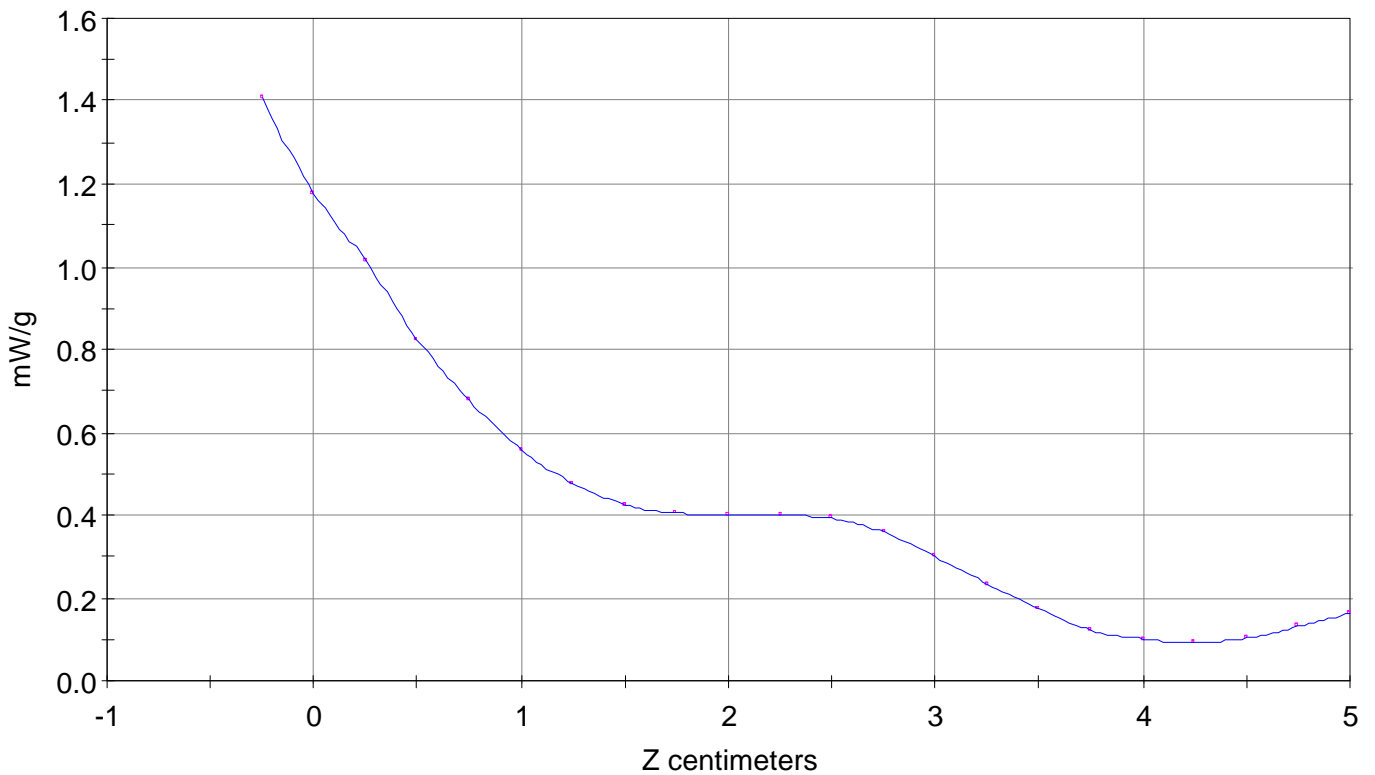
SAR Scan

File : 00042615_ZOOM

Start : 26-Apr-100 03:37:47 pm End : 26-Apr-100 03:48:23 pm

SAMSUNG/SCH-855/#02;848.97MHz;W;Helical/Out;

Body/Abdomen;ZOOM/SAR;PCTEST/E Field/0 DegreesMuscle/51.700/1.100

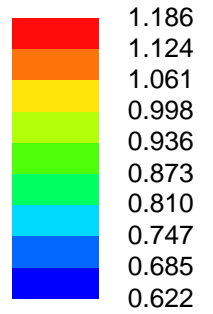
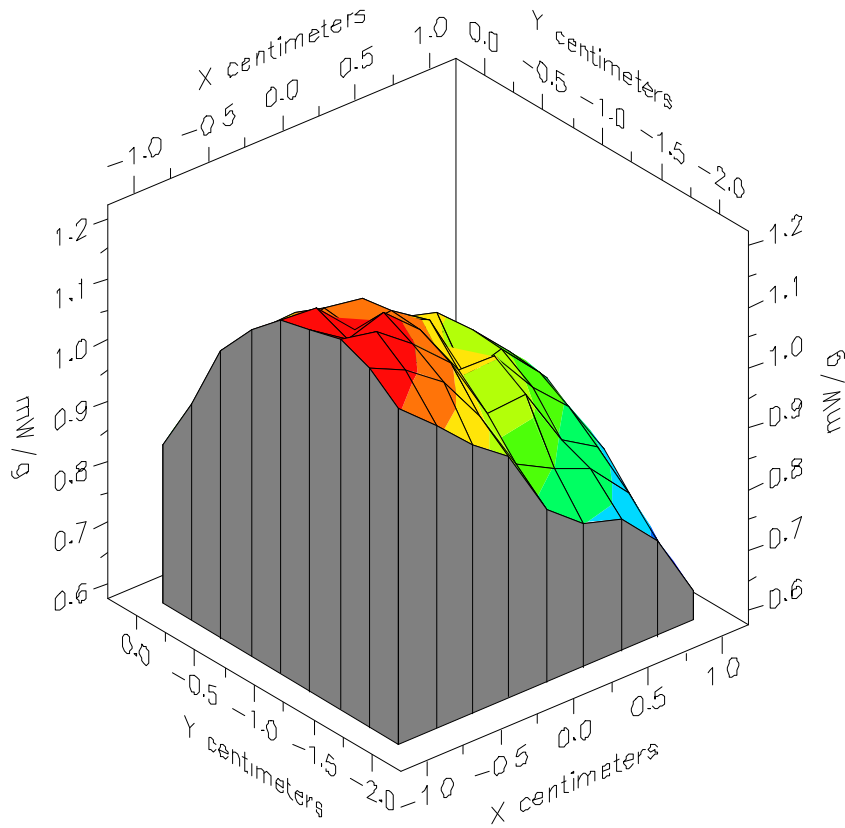


File : 00042615_ZOOM

Start : 26-Apr-100 03:37:47 pm End : 26-Apr-100 03:48:23 pm

SAMSUNG/SCH-855/#02;848.97MHz;W;Helical/Out;

Body/Abdomen;ZOOM/SAR;PCTEST/E Field/0 DegreesMuscle/51.700/1.100



File : 00042615_ZOOM

Start : 26-Apr-100 03:37:47 pm End : 26-Apr-100 03:48:23 pm

SAMSUNG/SCH-855/#02;848.97MHz;W;Helical/Out;

Body/Abdomen;ZOOM/SAR;PCTEST/E Field/0 DegreesMuscle/51.700/1.100

