

File : c:/idx3/SYSTEM/SARMEAS3/data/Normal/00042503_ZOOM.VLT
Start : 25-Apr-100 09:53:14 am End : 25-Apr-100 10:02:51 am

Radio Type : SAMSUNG
Model Number : SCH-855
Serial Number : #02
Frequency : 824.04 MHz
Peak Trans. Pwr : 0.480 W
Start Trans. Pwr : 0.480 W
Antenna Type : Helical
Antenna Posn. : In
Phantom Type : Head
Phantom Posn. : Left Ear
Scan Type : ZOOM/SAR
Probe Name : PCTEST
Field Type : E Field
Orientation : 0 Degrees

Mixture Type = Brain
Mixture Dielectric Constant = 43.400
Mixture Conductivity = 0.900

Comment :
SAMSUNG DUAL MODE PHONE FM MODE
CHAN 991 SAR 26.8 dBm CONDUCTED
FCC ID A3LSCH855

Robot : PCTEST

Probe Offset = 0.25 cm
Sensor Factor = 0.0108
Conversion Factor = 0.788

PCTEST Amplifier Channel Settings : 0.166 0.135 0.132

Max Location : X = 2.250, Y = -0.750, Z = 0.000 (cm) Value = 21.582

Measured Values (volts) =
2.143E-002 1.688E-002 1.441E-002 1.307E-002 1.189E-002 1.101E-002
1.019E-002 9.355E-003 8.396E-003 7.476E-003 6.381E-003 5.330E-003
4.136E-003 3.125E-003 2.489E-003 2.100E-003 1.917E-003 2.038E-003
2.363E-003 2.708E-003 2.948E-003

Calc. Voltage @ Surface (Vs) = 0.0262

Voltage @ 1.00 cm (Vt) = 0.0131

Ave. Voltage (Vs+Vt)/2 = 0.0196

Ave. SAR over 1 g (mW/g) = 1.4310

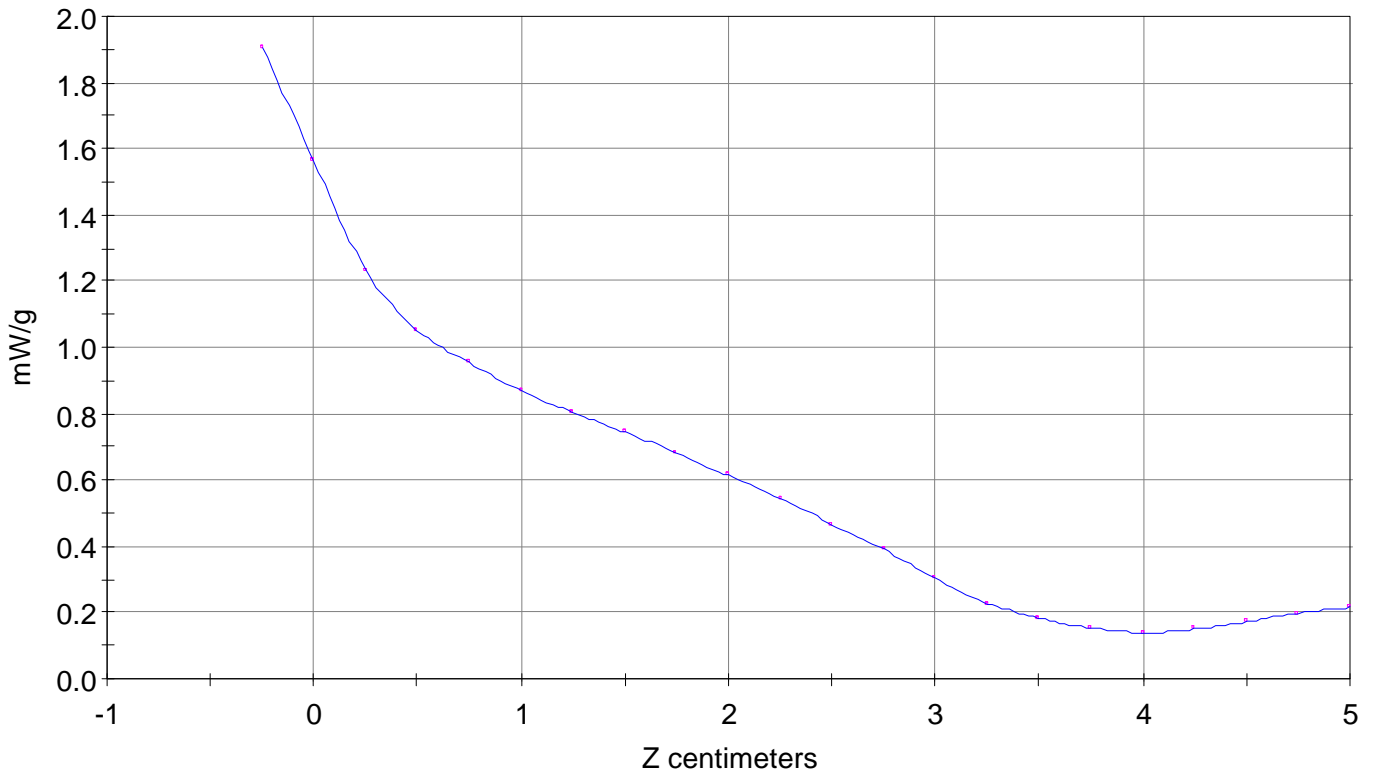
SAR Scan

File : 00042503_ZOOM

Start : 25-Apr-100 09:53:14 am End : 25-Apr-100 10:02:51 am

SAMSUNG/SCH-855/#02;824.04MHz;W;Helical/In;

Head/Left Ear;ZOOM/SAR;PCTEST/E Field/0 DegreesBrain/43.400/0.900

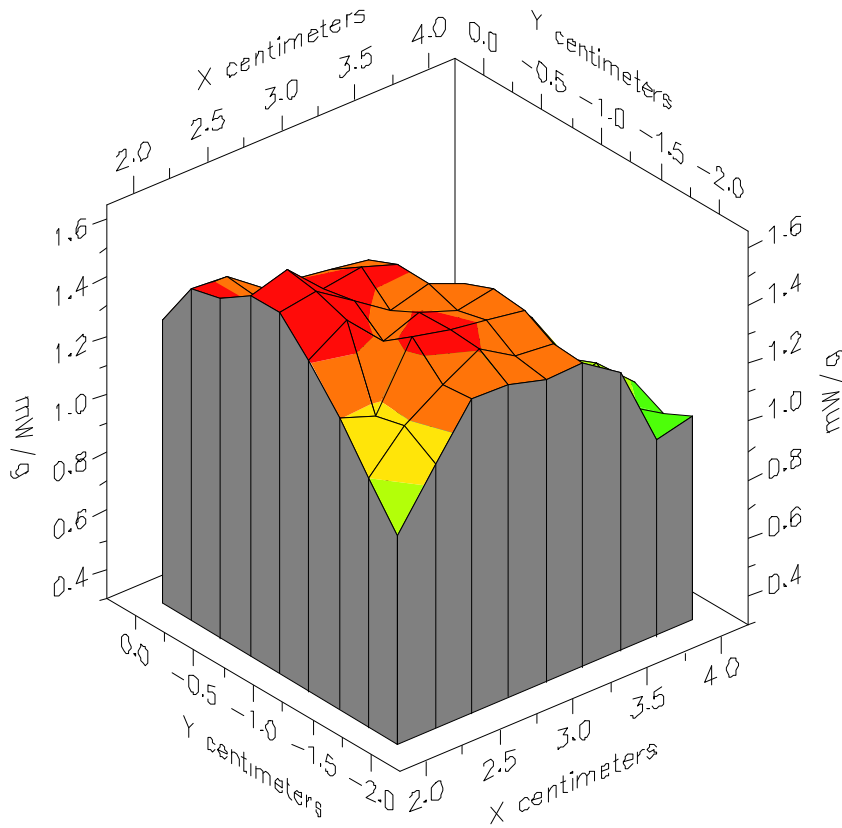


File : 00042503_ZOOM

Start : 25-Apr-100 09:53:14 am End : 25-Apr-100 10:02:51 am

SAMSUNG/SCH-855/#02;824.04MHz;W;Helical/In;

Head/Left Ear;ZOOM/SAR;PCTEST/E Field/0 DegreesBrain/43.400/0.900

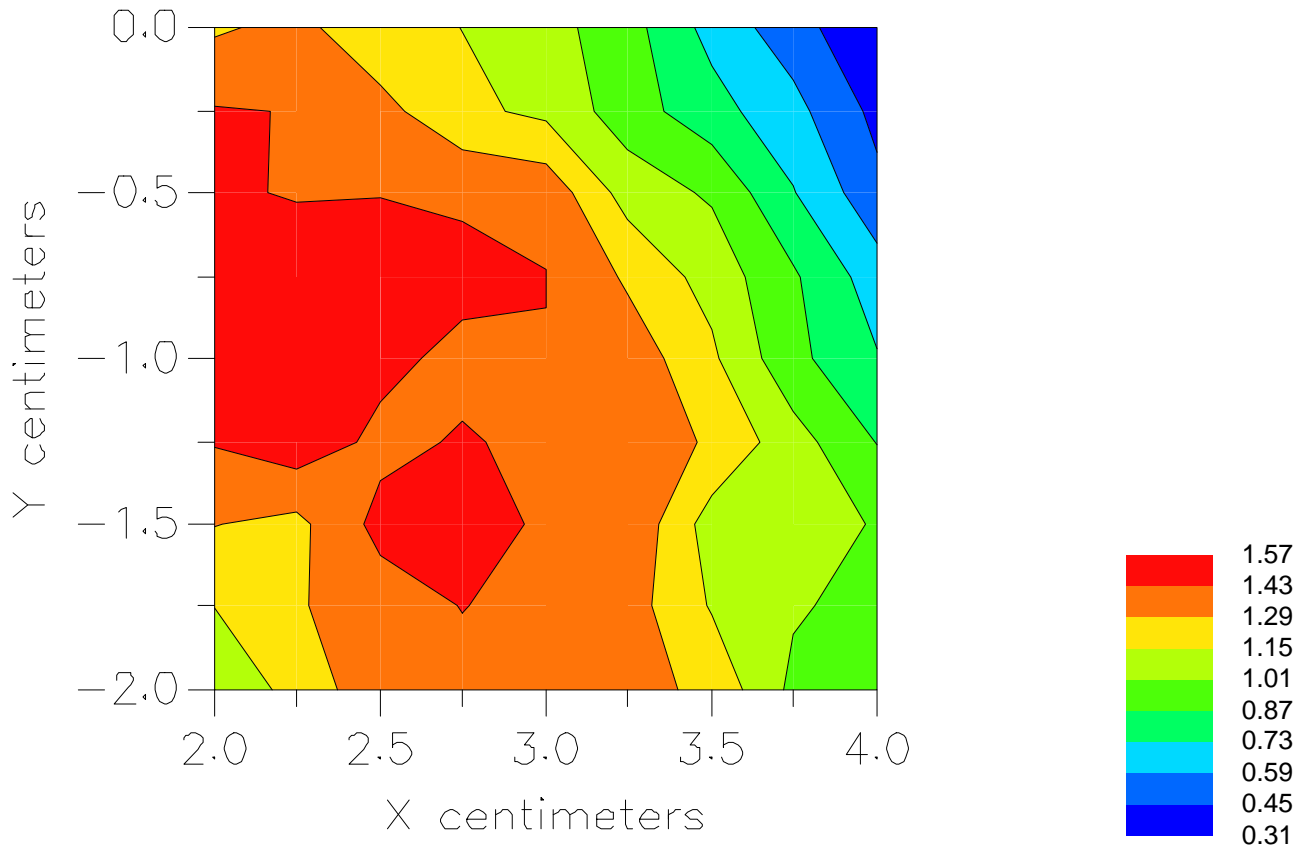


File : 00042503_ZOOM

Start : 25-Apr-100 09:53:14 am End : 25-Apr-100 10:02:51 am

SAMSUNG/SCH-855/#02;824.04MHz;W;Helical/In;

Head/Left Ear;ZOOM/SAR;PCTEST/E Field/0 DegreesBrain/43.400/0.900



File : c:/idx3/SYSTEM/SARMEAS3/data/Normal/00042408_ZOOM.VLT
Start : 24-Apr-100 04:52:36 pm End : 24-Apr-100 05:02:14 pm

Radio Type : SAMSUNG
Model Number : SCH-855
Serial Number : #02
Frequency : 824.04 MHz
Peak Trans. Pwr : 0.480 W
Start Trans. Pwr: 0.480 W
Antenna Type : Helical
Antenna Posn. : Out
Phantom Type : Head
Phantom Posn. : Left Ear
Scan Type : ZOOM/SAR
Probe Name : PCTEST
Field Type : E Field
Orientation : 0 Degrees

Mixture Type = Brain
Mixture Dielectric Constant = 43.400
Mixture Conductivity = 0.900

Comment :
SAMSUNG DUAL MODE PHONE FM MODE
CHAN 991 SAR 26.8 dBm CONDUCTED
FCC ID A3LSCH855

Robot : PCTEST

Probe Offset = 0.25 cm
Sensor Factor = 0.0108
Conversion Factor = 0.788

PCTEST Amplifier Channel Settings : 0.166 0.135 0.132

Max Location : X = 3.000, Y = -0.500, Z = 0.000 (cm) Value = 19.686

Measured Values (volts) =
1.937E-002 1.627E-002 1.400E-002 1.207E-002 1.066E-002 9.409E-003
8.325E-003 7.316E-003 6.269E-003 5.238E-003 4.374E-003 3.679E-003
3.091E-003 2.596E-003 2.321E-003 2.206E-003 2.236E-003 2.320E-003
2.406E-003 2.479E-003 2.405E-003

Calc. Voltage @ Surface (Vs) = 0.0228

Voltage @ 1.00 cm (Vt) = 0.0121

Ave. Voltage (Vs+Vt)/2 = 0.0174

Ave. SAR over 1 g (mW/g) = 1.2715

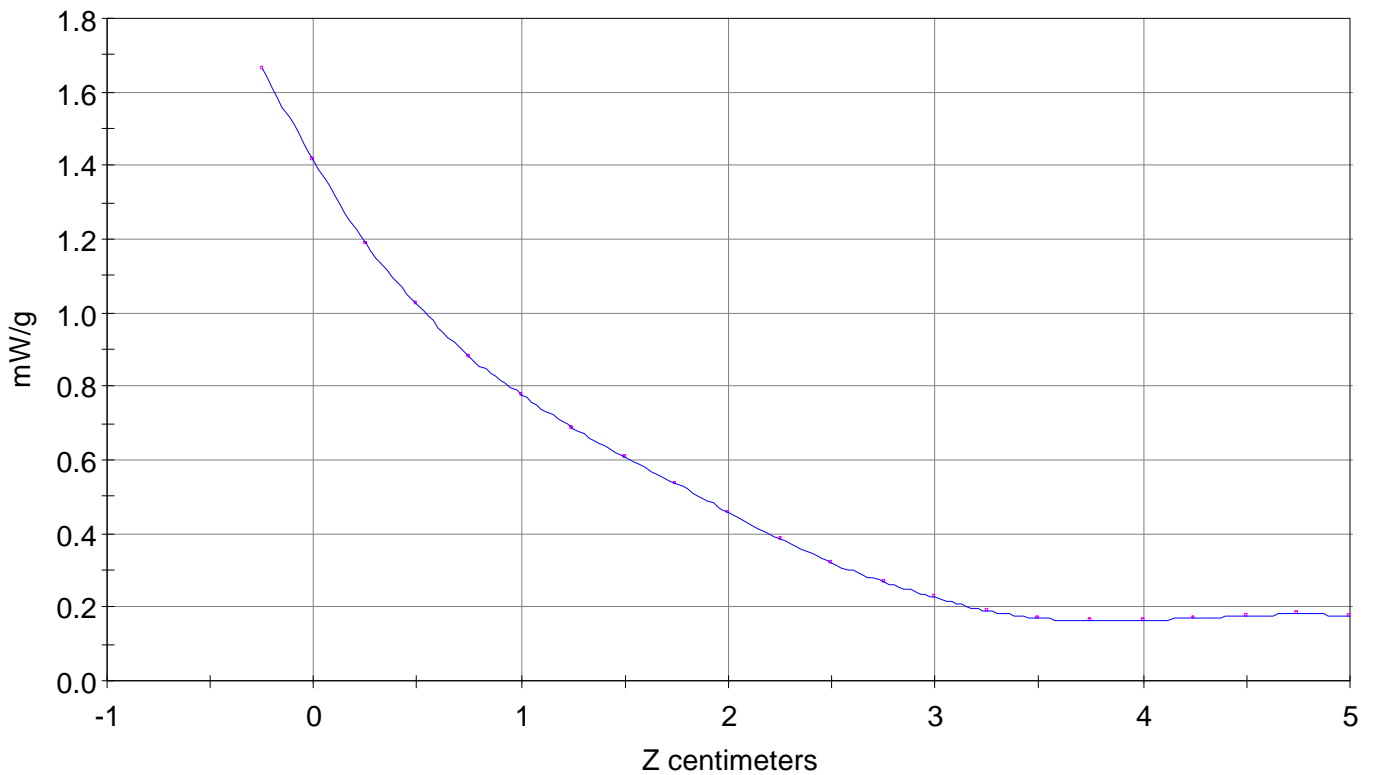
SAR Scan

File : 00042408_ZOOM

Start : 24-Apr-100 04:52:36 pm End : 24-Apr-100 05:02:14 pm

SAMSUNG/SCH-855/#02;824.04MHz;W;Helical/Out;

Head/Left Ear;ZOOM/SAR;PCTEST/E Field/0 DegreesBrain/43.400/0.900

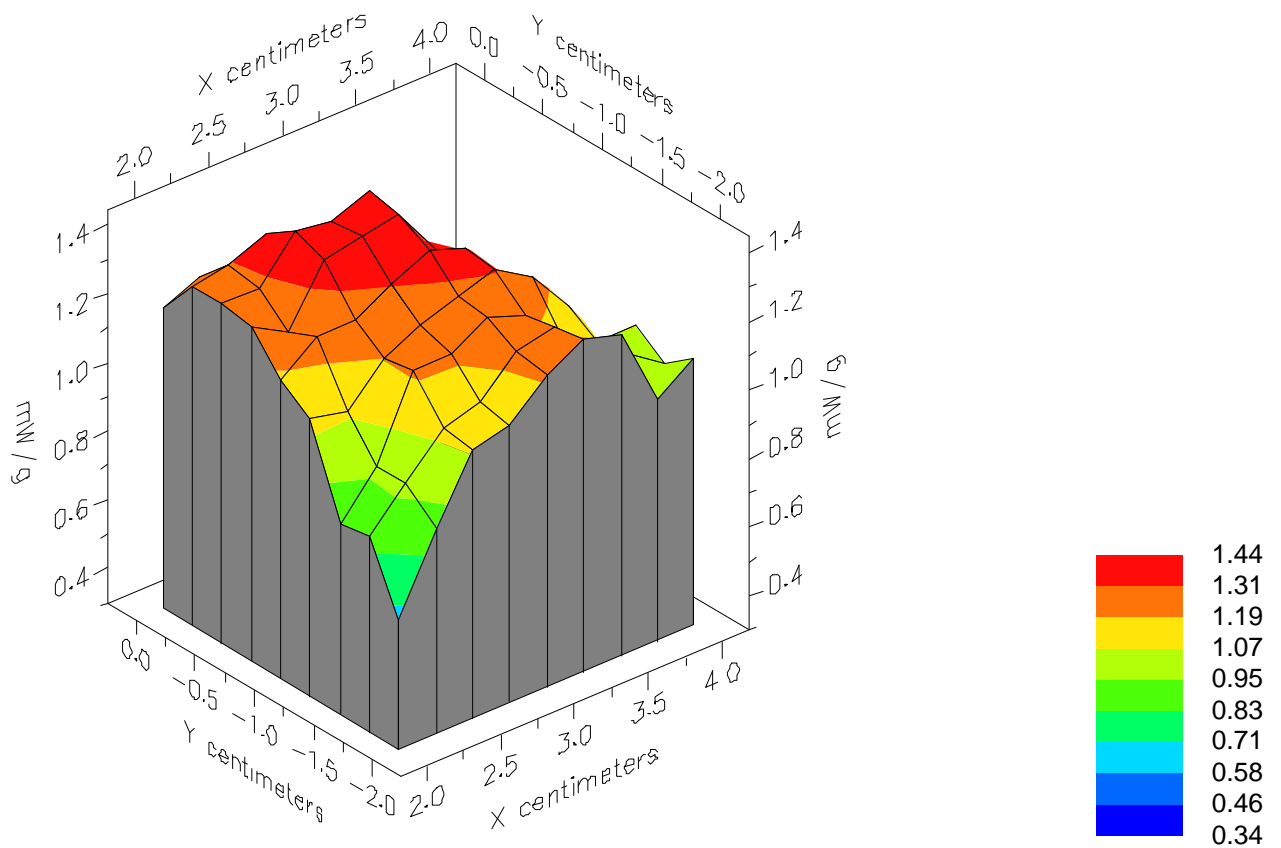


File : 00042408_ZOOM

Start : 24-Apr-100 04:52:36 pm End : 24-Apr-100 05:02:14 pm

SAMSUNG/SCH-855/#02;824.04MHz;W;Helical/Out;

Head/Left Ear;ZOOM/SAR;PCTEST/E Field/0 DegreesBrain/43.400/0.900

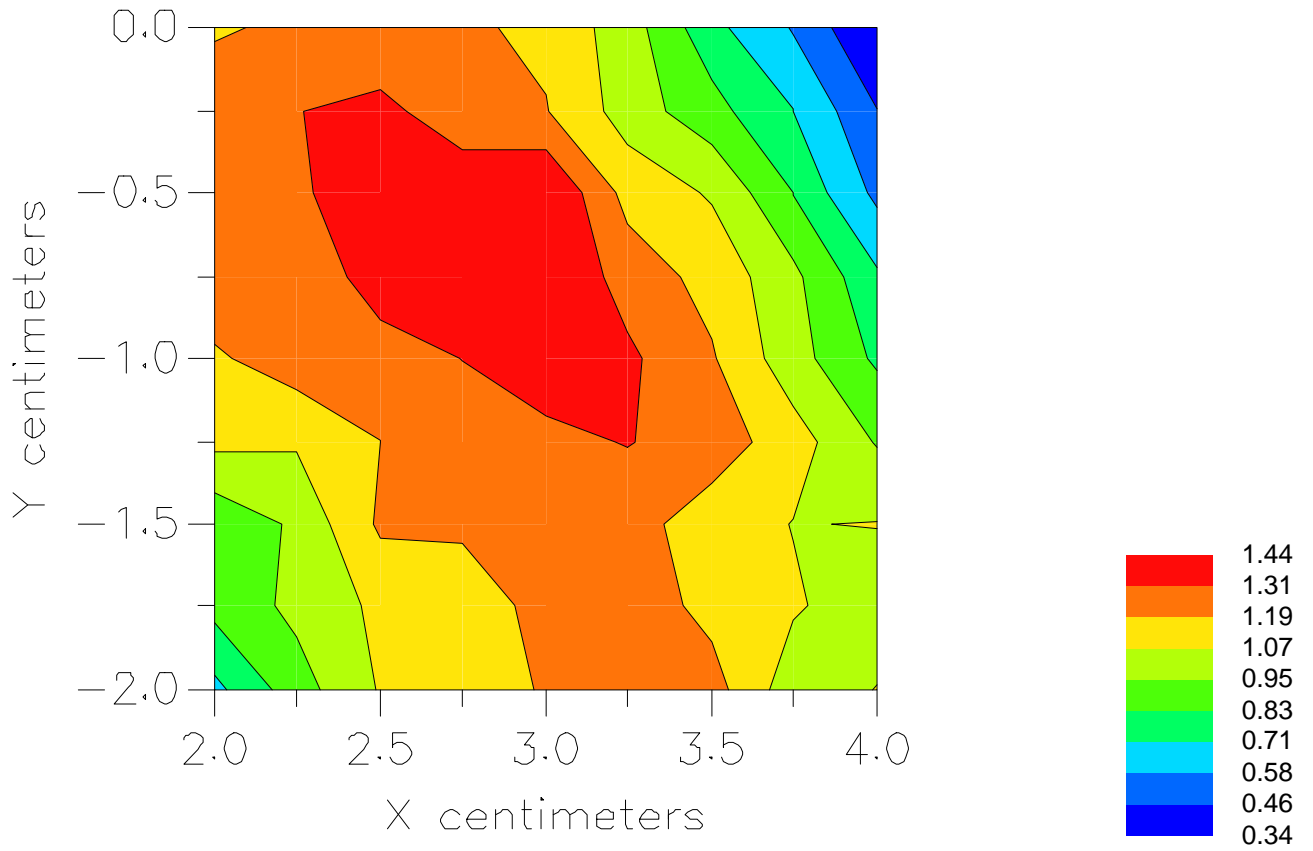


File : 00042408_ZOOM

Start : 24-Apr-100 04:52:36 pm End : 24-Apr-100 05:02:14 pm

SAMSUNG/SCH-855/#02;824.04MHz;W;Helical/Out;

Head/Left Ear;ZOOM/SAR;PCTEST/E Field/0 DegreesBrain/43.400/0.900



File : c:/idx3/SYSTEM/SARMEAS3/data/Normal/00042405_ZOOM.VLT
Start : 24-Apr-100 04:12:10 pm End : 24-Apr-100 04:25:18 pm

Radio Type : SAMSUNG
Model Number : SCH-855
Serial Number : #02
Frequency : 836.49 MHz
Peak Trans. Pwr : 0.480 W
Start Trans. Pwr: 0.480 W
Antenna Type : Helical
Antenna Posn. : In
Phantom Type : Head
Phantom Posn. : Left Ear
Scan Type : ZOOM/SAR
Probe Name : PCTEST
Field Type : E Field
Orientation : 0 Degrees

Mixture Type = Brain
Mixture Dielectric Constant = 43.400
Mixture Conductivity = 0.900

Comment :
SAMSUNG DUAL MODE PHONE FM MODE
CHAN 383 SAR 26.8 dBm CONDUCTED
FCC ID A3LSCH855

Robot : PCTEST

Probe Offset = 0.25 cm
Sensor Factor = 0.0108
Conversion Factor = 0.788

PCTEST Amplifier Channel Settings : 0.166 0.135 0.132

Max Location : X = 2.750, Y = -0.750, Z = 0.000 (cm) Value = 21.646

Measured Values (volts) =
2.165E-002 1.726E-002 1.499E-002 1.319E-002 1.197E-002 1.080E-002
9.723E-003 8.600E-003 7.602E-003 6.549E-003 5.486E-003 4.571E-003
3.818E-003 3.141E-003 2.608E-003 2.426E-003 2.363E-003 2.445E-003
2.570E-003 2.659E-003 2.667E-003

Calc. Voltage @ Surface (Vs) = 0.0261

Voltage @ 1.00 cm (Vt) = 0.0132

Ave. Voltage (Vs+Vt)/2 = 0.0196

Ave. SAR over 1 g (mW/g) = 1.4315

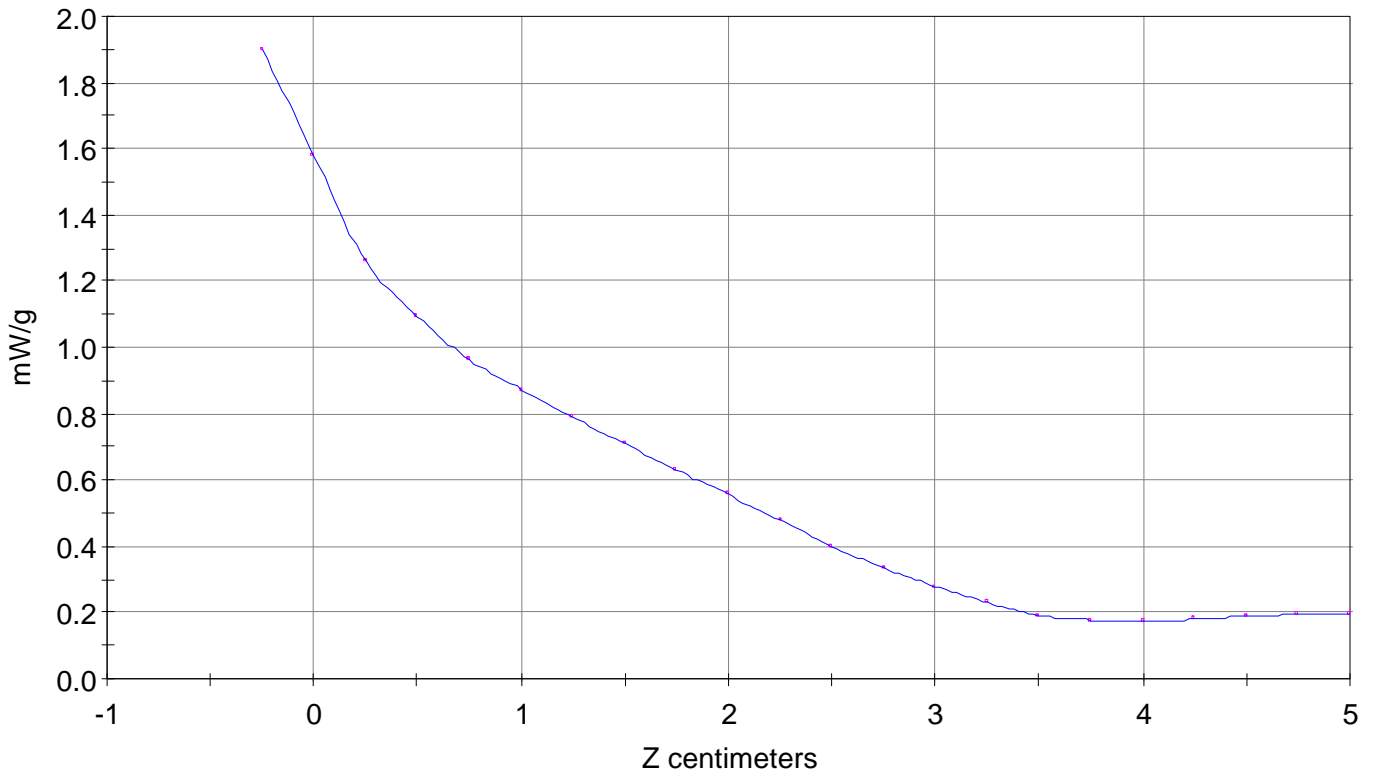
SAR Scan

File : 00042405_ZOOM

Start : 24-Apr-100 04:12:10 pm End : 24-Apr-100 04:25:18 pm

SAMSUNG/SCH-855/#02;836.49MHz;W;Helical/In;

Head/Left Ear;ZOOM/SAR;PCTEST/E Field/0 DegreesBrain/43.400/0.900

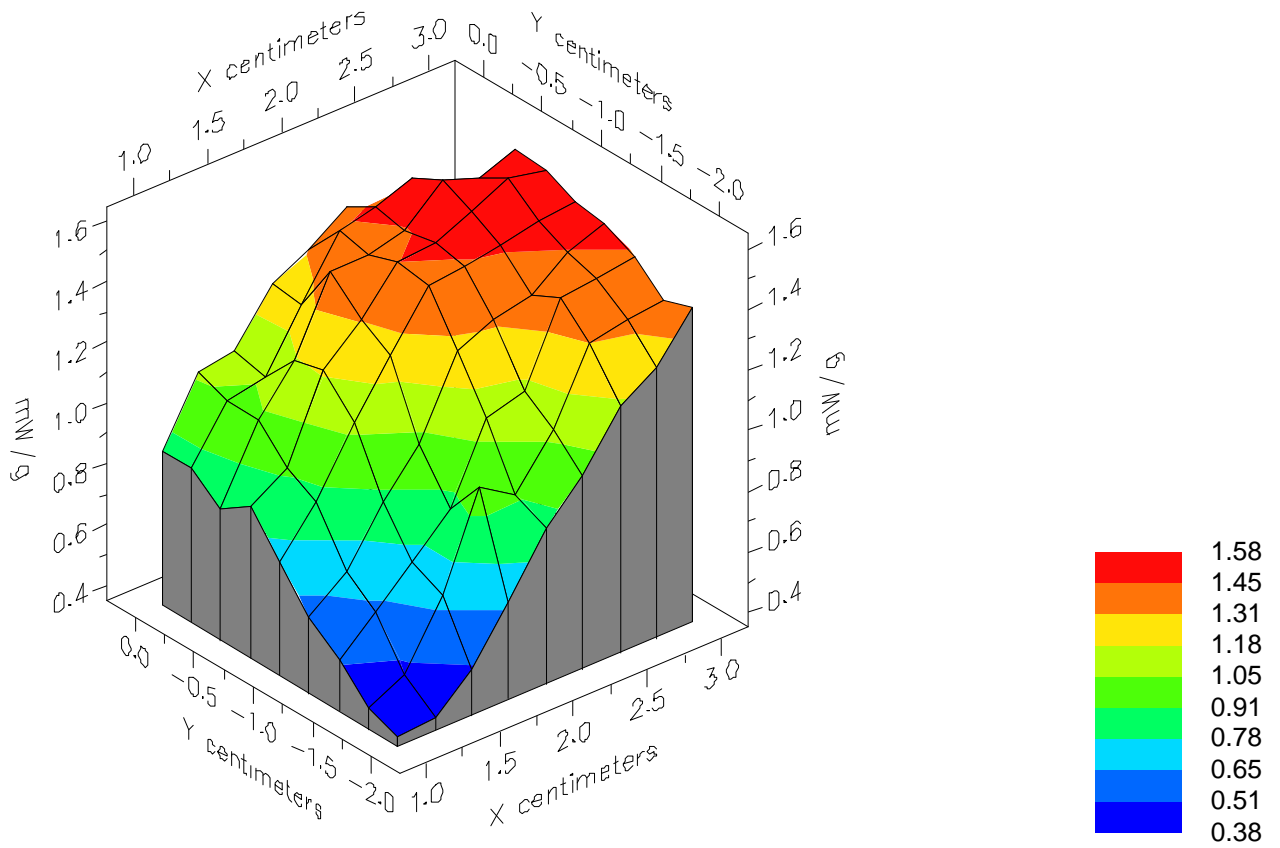


File : 00042405_ZOOM

Start : 24-Apr-100 04:12:10 pm End : 24-Apr-100 04:25:18 pm

SAMSUNG/SCH-855/#02;836.49MHz;W;Helical/In;

Head/Left Ear;ZOOM/SAR;PCTEST/E Field/0 DegreesBrain/43.400/0.900

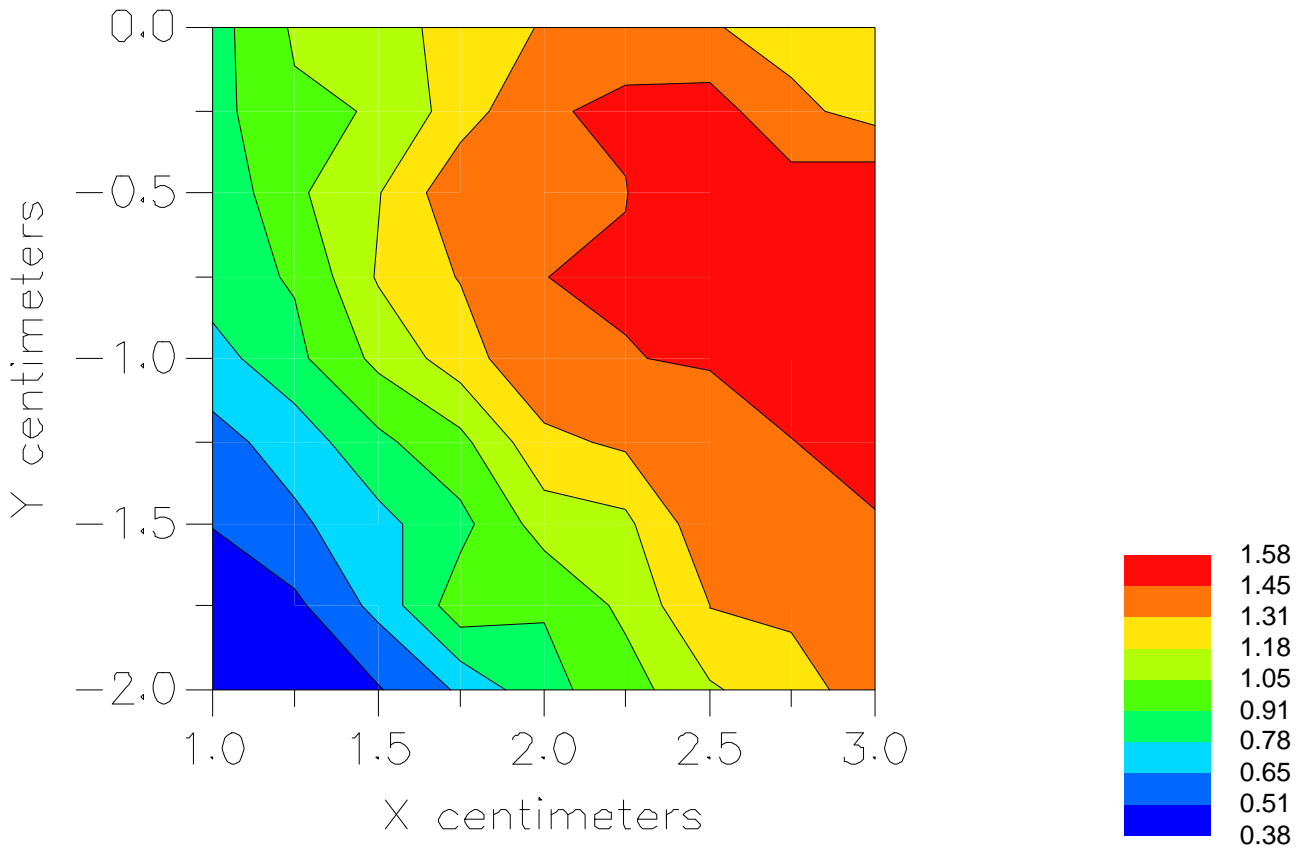


File : 00042405_ZOOM

Start : 24-Apr-100 04:12:10 pm End : 24-Apr-100 04:25:18 pm

SAMSUNG/SCH-855/#02;836.49MHz;W;Helical/In;

Head/Left Ear;ZOOM/SAR;PCTEST/E Field/0 DegreesBrain/43.400/0.900



File : c:/idx3/SYSTEM/SARMEAS3/data/Normal/00042409_ZOOM.VLT
Start : 24-Apr-100 05:08:22 pm End : 24-Apr-100 05:18:01 pm

Radio Type : SAMSUNG
Model Number : SCH-855
Serial Number : #02
Frequency : 836.49 MHz
Peak Trans. Pwr : 0.480 W
Start Trans. Pwr : 0.480 W
Antenna Type : Helical
Antenna Posn. : Out
Phantom Type : Head
Phantom Posn. : Left Ear
Scan Type : ZOOM/SAR
Probe Name : PCTEST
Field Type : E Field
Orientation : 0 Degrees

Mixture Type = Brain
Mixture Dielectric Constant = 43.400
Mixture Conductivity = 0.900

Comment :
SAMSUNG DUAL MODE PHONE FM MODE
CHAN 383 SAR 26.8 dBm CONDUCTED
FCC ID A3LSCH855

Robot : PCTEST

Probe Offset = 0.25 cm
Sensor Factor = 0.0108
Conversion Factor = 0.788

PCTEST Amplifier Channel Settings : 0.166 0.135 0.132

Max Location : X = 2.750, Y = -0.750, Z = 0.000 (cm) Value = 20.358

Measured Values (volts) =
2.047E-002 1.629E-002 1.402E-002 1.251E-002 1.122E-002 1.013E-002
9.161E-003 8.093E-003 7.018E-003 6.081E-003 5.041E-003 4.226E-003
3.509E-003 2.951E-003 2.541E-003 2.336E-003 2.307E-003 2.397E-003
2.491E-003 2.588E-003 2.617E-003

Calc. Voltage @ Surface (Vs) = 0.0248

Voltage @ 1.00 cm (Vt) = 0.0125

Ave. Voltage (Vs+Vt)/2 = 0.0186

Ave. SAR over 1 g (mW/g) = 1.3595

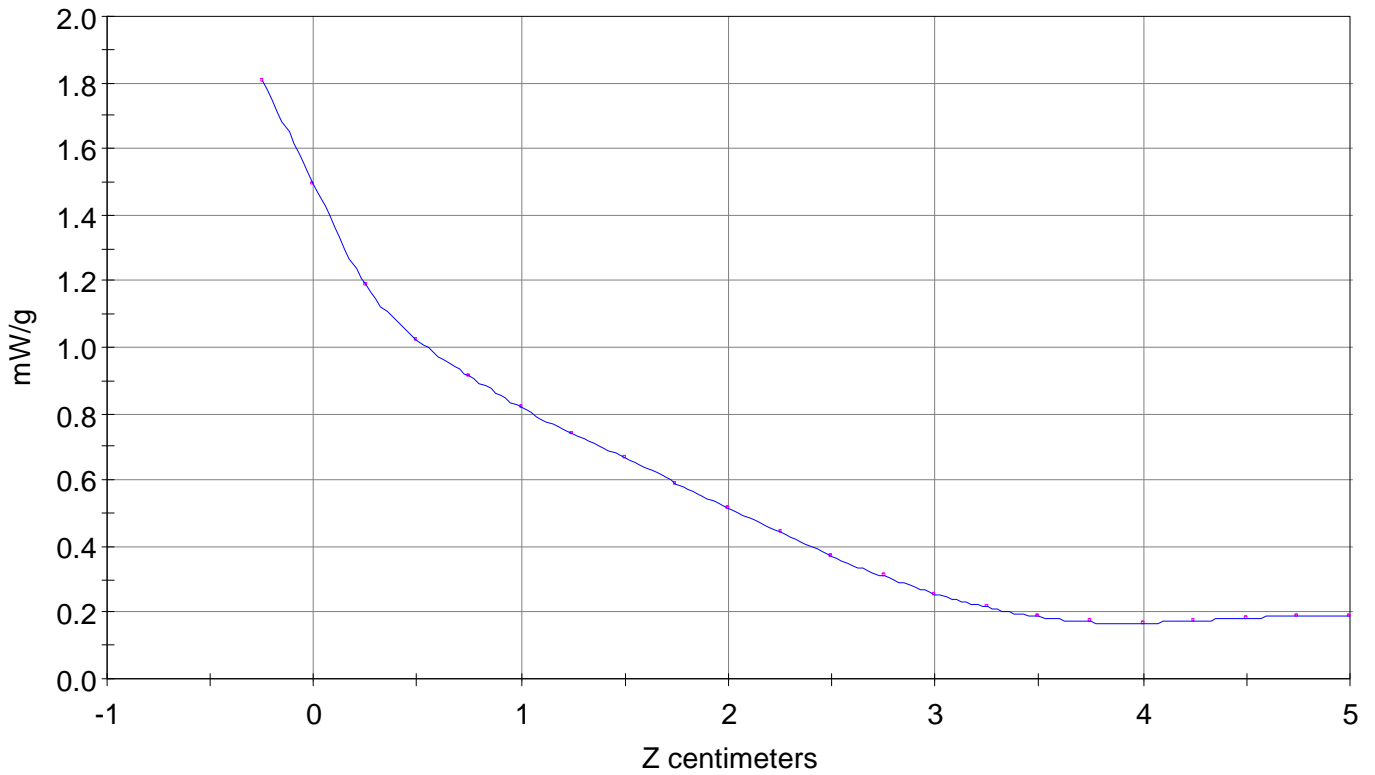
SAR Scan

File : 00042409_ZOOM

Start : 24-Apr-100 05:08:22 pm End : 24-Apr-100 05:18:01 pm

SAMSUNG/SCH-855/#02;836.49MHz;W;Helical/Out;

Head/Left Ear;ZOOM/SAR;PCTEST/E Field/0 DegreesBrain/43.400/0.900

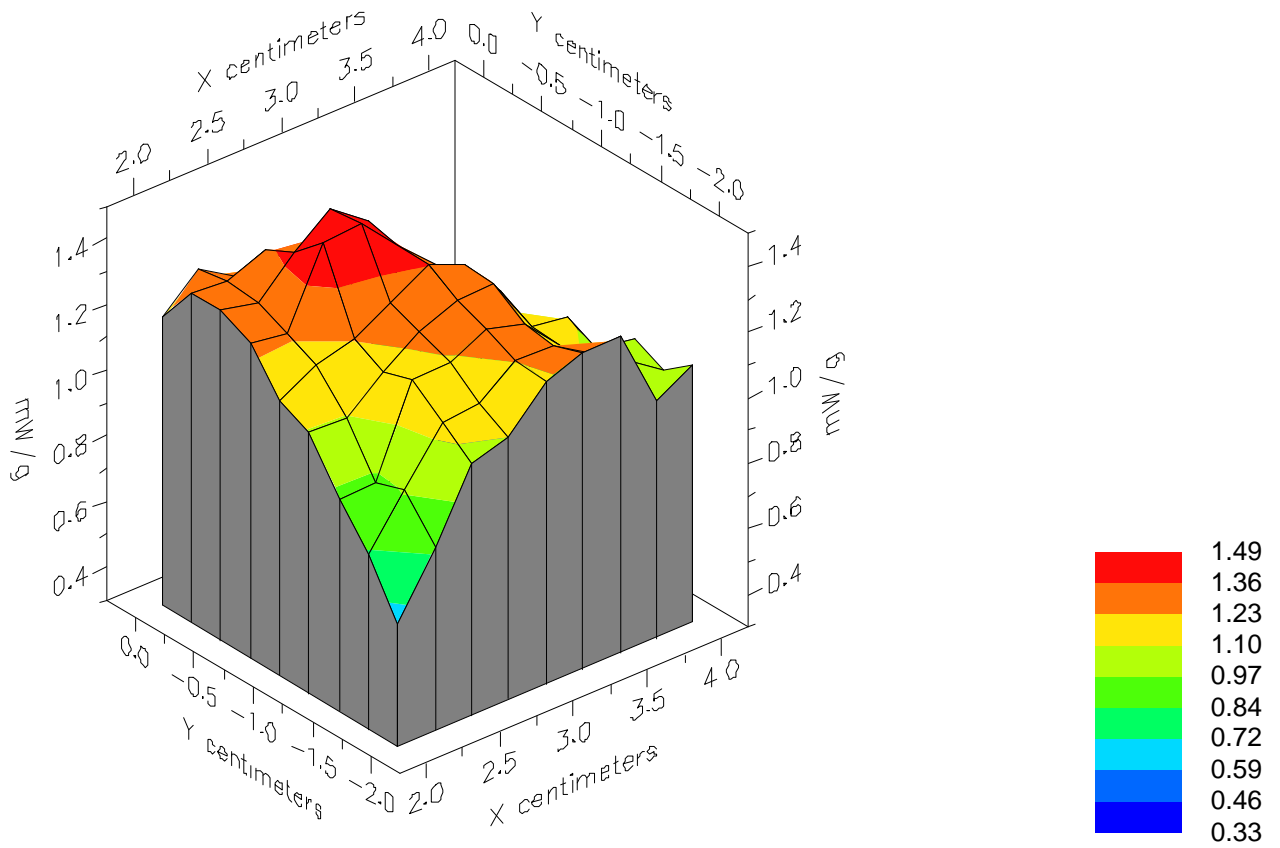


File : 00042409_ZOOM

Start : 24-Apr-100 05:08:22 pm End : 24-Apr-100 05:18:01 pm

SAMSUNG/SCH-855/#02;836.49MHz;W;Helical/Out;

Head/Left Ear;ZOOM/SAR;PCTEST/E Field/0 DegreesBrain/43.400/0.900

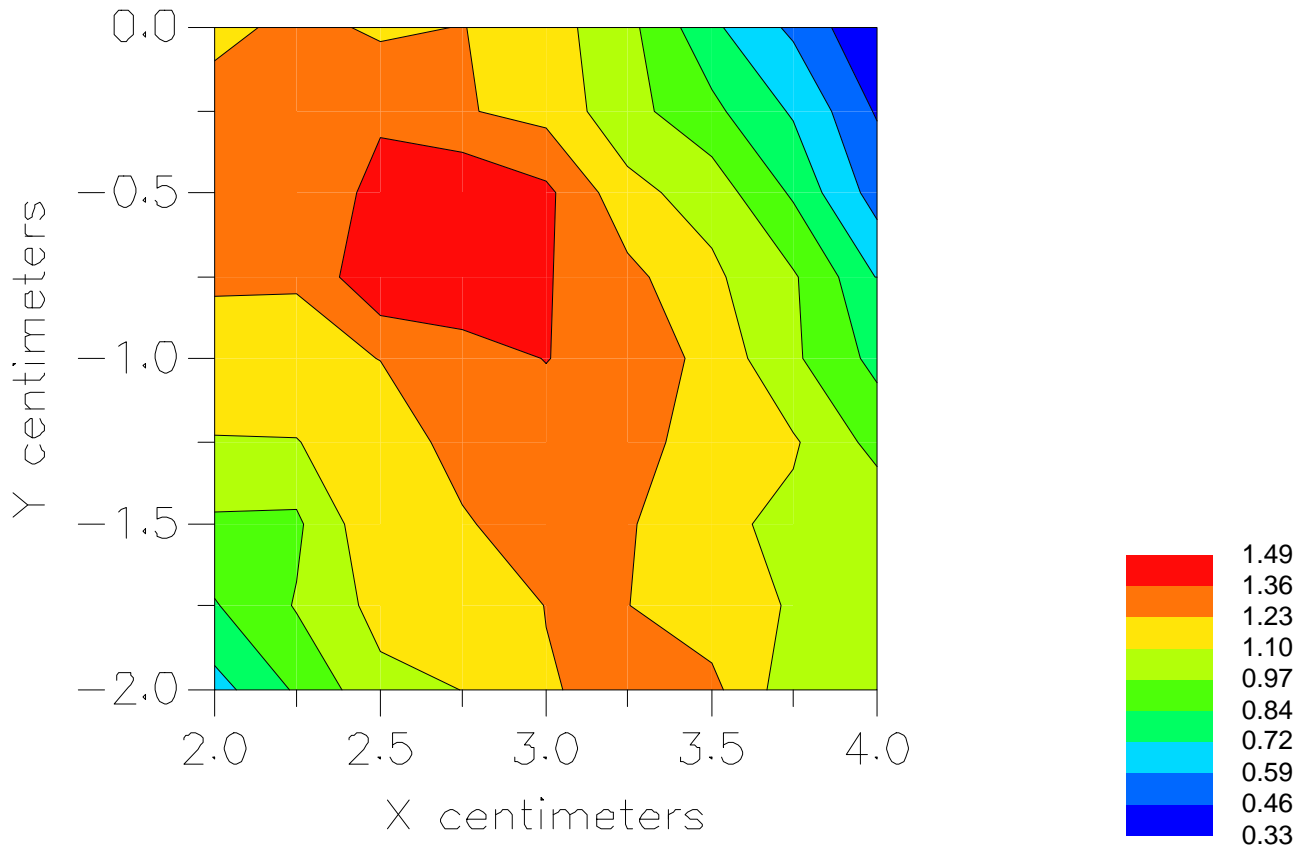


File : 00042409_ZOOM

Start : 24-Apr-100 05:08:22 pm End : 24-Apr-100 05:18:01 pm

SAMSUNG/SCH-855/#02;836.49MHz;W;Helical/Out;

Head/Left Ear;ZOOM/SAR;PCTEST/E Field/0 DegreesBrain/43.400/0.900



File : c:/idx3/SYSTEM/SARMEAS3/data/Normal/00042501_ZOOM.VLT
Start : 25-Apr-100 09:17:31 am End : 25-Apr-100 09:27:07 am

Radio Type : SAMSUNG
Model Number : SCH-855
Serial Number : #02
Frequency : 848.97 MHz
Peak Trans. Pwr : 0.480 W
Start Trans. Pwr : 0.480 W
Antenna Type : Helical
Antenna Posn. : In
Phantom Type : Head
Phantom Posn. : Left Ear
Scan Type : ZOOM/SAR
Probe Name : PCTEST
Field Type : E Field
Orientation : 0 Degrees

Mixture Type = Brain
Mixture Dielectric Constant = 43.400
Mixture Conductivity = 0.900

Comment :
SAMSUNG DUAL MODE PHONE FM MODE
CHAN 799 SAR 26.8 dBm CONDUCTED
FCC ID A3LSCH855

Robot : PCTEST

Probe Offset = 0.25 cm
Sensor Factor = 0.0108
Conversion Factor = 0.788

PCTEST Amplifier Channel Settings : 0.166 0.135 0.132

Max Location : X = 2.250, Y = -0.750, Z = 0.000 (cm) Value = 21.356

Measured Values (volts) =
2.133E-002 1.695E-002 1.453E-002 1.294E-002 1.194E-002 1.086E-002
1.006E-002 9.203E-003 8.311E-003 7.300E-003 6.328E-003 5.236E-003
4.079E-003 3.259E-003 2.513E-003 2.135E-003 1.951E-003 2.116E-003
2.416E-003 2.754E-003 2.953E-003

Calc. Voltage @ Surface (Vs) = 0.0259

Voltage @ 1.00 cm (Vt) = 0.0129

Ave. Voltage (Vs+Vt)/2 = 0.0194

Ave. SAR over 1 g (mW/g) = 1.4153

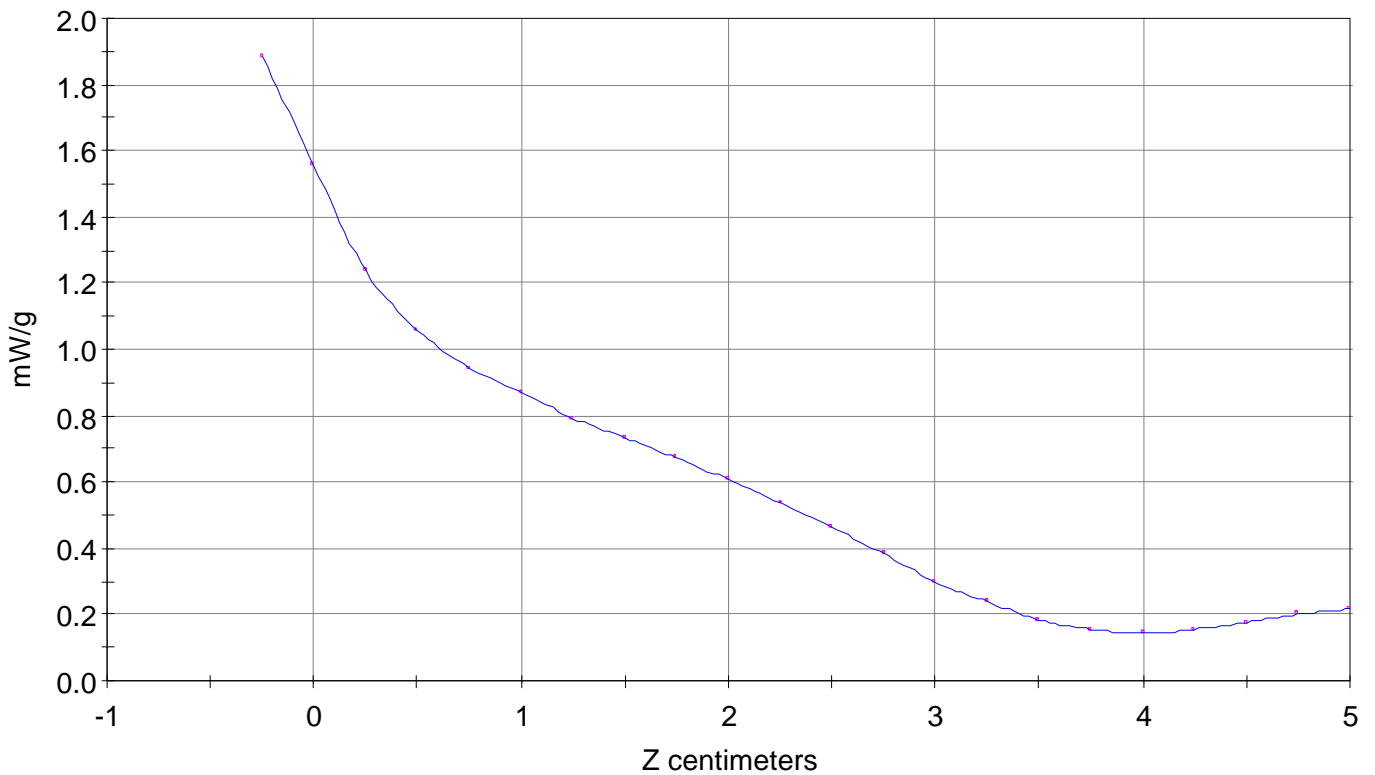
SAR Scan

File : 00042501_ZOOM

Start : 25-Apr-100 09:17:31 am End : 25-Apr-100 09:27:07 am

SAMSUNG/SCH-855/#02;848.97MHz;W;Helical/In;

Head/Left Ear;ZOOM/SAR;PCTEST/E Field/0 DegreesBrain/43.400/0.900

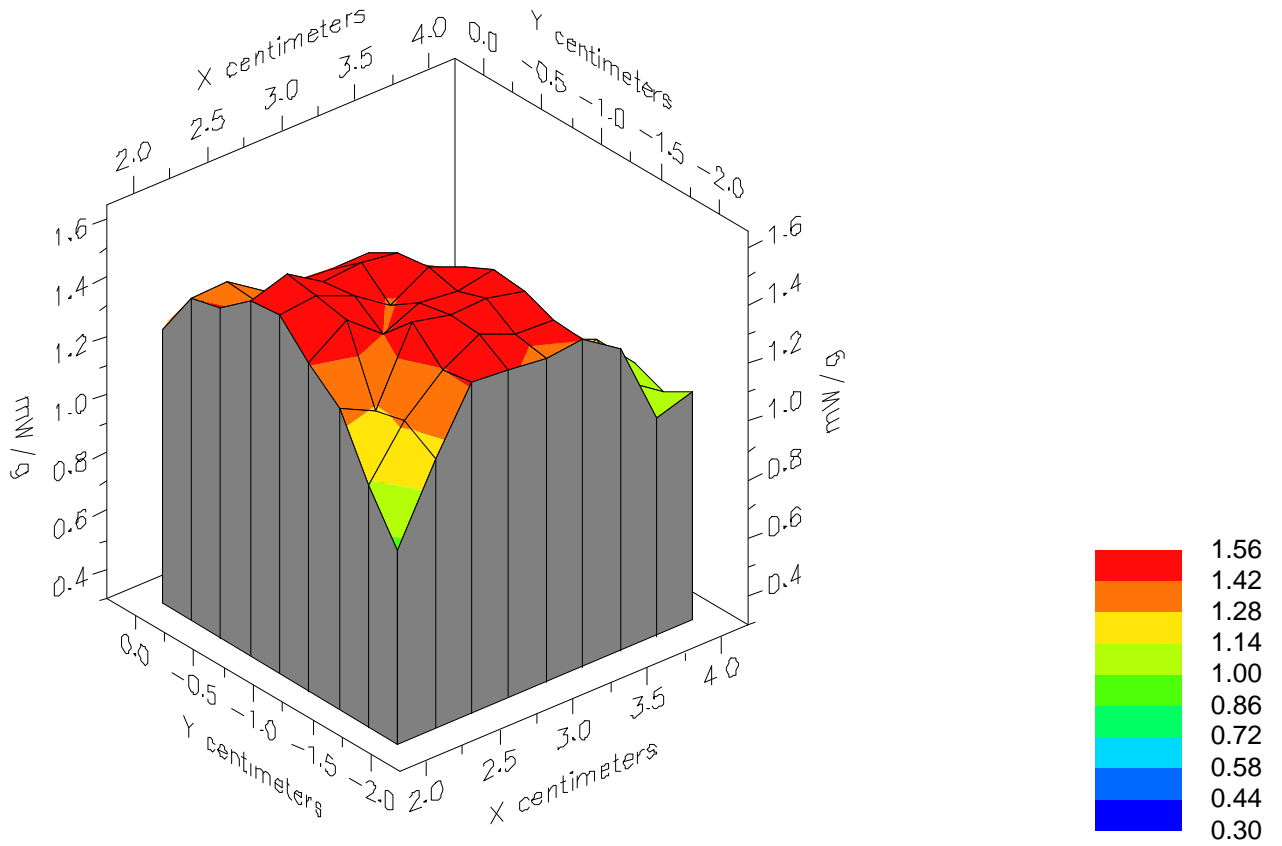


File : 00042501_ZOOM

Start : 25-Apr-100 09:17:31 am End : 25-Apr-100 09:27:07 am

SAMSUNG/SCH-855/#02;848.97MHz;W;Helical/In;

Head/Left Ear;ZOOM/SAR;PCTEST/E Field/0 DegreesBrain/43.400/0.900

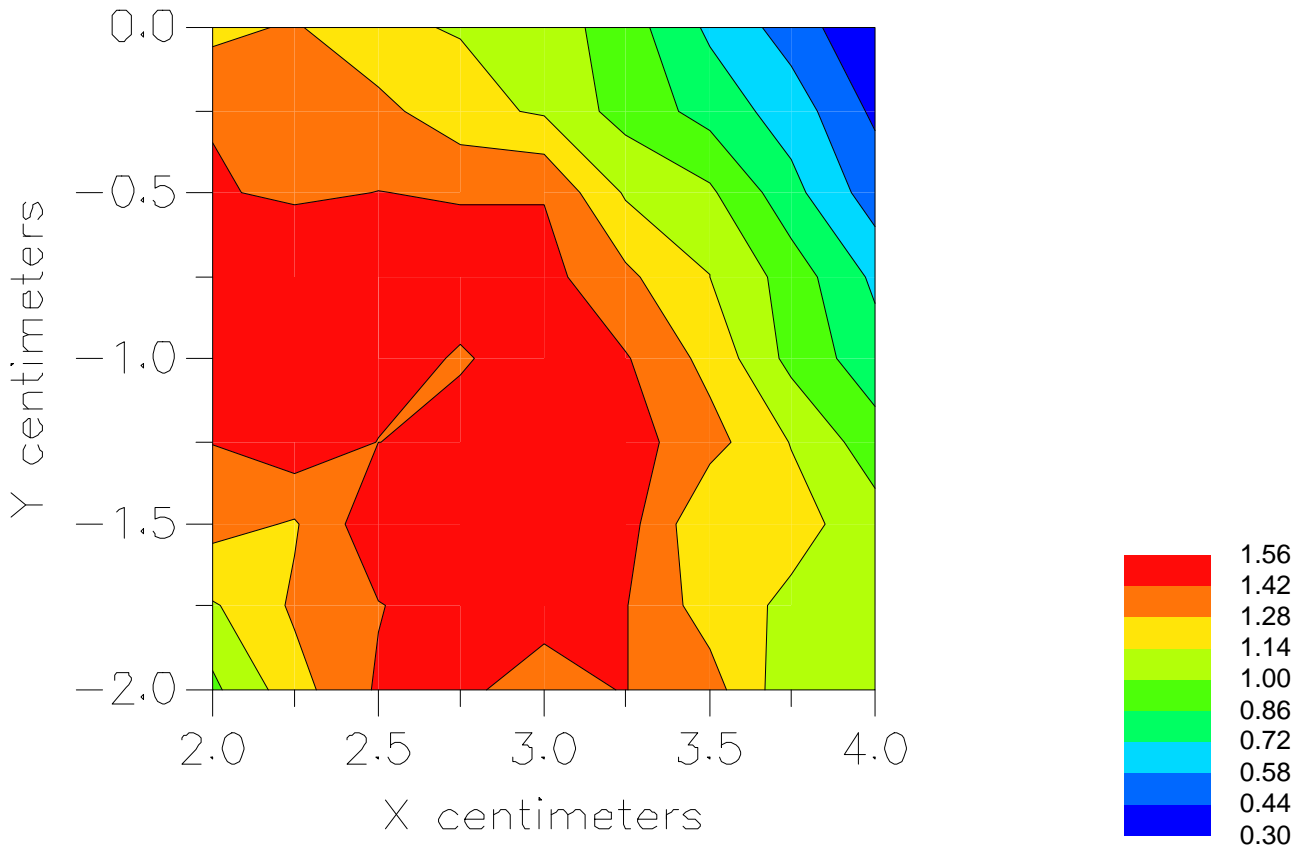


File : 00042501_ZOOM

Start : 25-Apr-100 09:17:31 am End : 25-Apr-100 09:27:07 am

SAMSUNG/SCH-855/#02;848.97MHz;W;Helical/In;

Head/Left Ear;ZOOM/SAR;PCTEST/E Field/0 DegreesBrain/43.400/0.900



File : c:/idx3/SYSTEM/SARMEAS3/data/Normal/00042410_ZOOM.VLT
Start : 24-Apr-100 05:24:09 pm End : 24-Apr-100 05:33:49 pm

Radio Type : SAMSUNG
Model Number : SCH-855
Serial Number : #02
Frequency : 848.97 MHz
Peak Trans. Pwr : 0.480 W
Start Trans. Pwr: 0.480 W
Antenna Type : Helical
Antenna Posn. : Out
Phantom Type : Head
Phantom Posn. : Left Ear
Scan Type : ZOOM/SAR
Probe Name : PCTEST
Field Type : E Field
Orientation : 0 Degrees

Mixture Type = Brain
Mixture Dielectric Constant = 43.400
Mixture Conductivity = 0.900

Comment :
SAMSUNG DUAL MODE PHONE FM MODE
CHAN 799 SAR 26.8 dBm CONDUCTED
FCC ID A3LSCH855

Robot : PCTEST

Probe Offset = 0.25 cm
Sensor Factor = 0.0108
Conversion Factor = 0.788

PCTEST Amplifier Channel Settings : 0.166 0.135 0.132

Max Location : X = 2.750, Y = -0.750, Z = 0.000 (cm) Value = 20.593

Measured Values (volts) =
2.060E-002 1.642E-002 1.381E-002 1.234E-002 1.126E-002 1.024E-002
9.105E-003 8.127E-003 6.996E-003 6.040E-003 4.990E-003 4.149E-003
3.463E-003 2.928E-003 2.498E-003 2.314E-003 2.283E-003 2.374E-003
2.487E-003 2.609E-003 2.643E-003

Calc. Voltage @ Surface (Vs) = 0.0252

Voltage @ 1.00 cm (Vt) = 0.0123

Ave. Voltage (Vs+Vt)/2 = 0.0188

Ave. SAR over 1 g (mW/g) = 1.3685

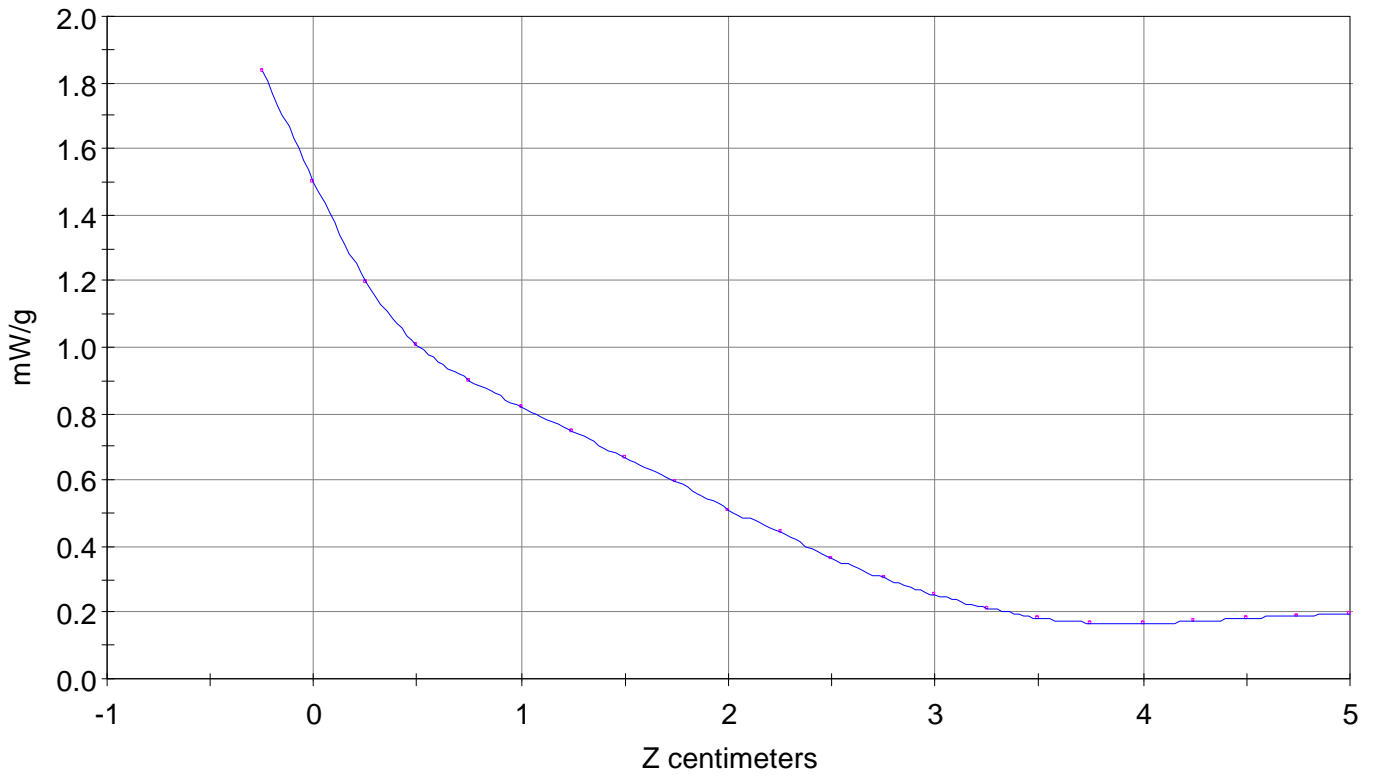
SAR Scan

File : 00042410_ZOOM

Start : 24-Apr-100 05:24:09 pm End : 24-Apr-100 05:33:49 pm

SAMSUNG/SCH-855/#02;848.97MHz;W;Helical/Out;

Head/Left Ear;ZOOM/SAR;PCTEST/E Field/0 DegreesBrain/43.400/0.900

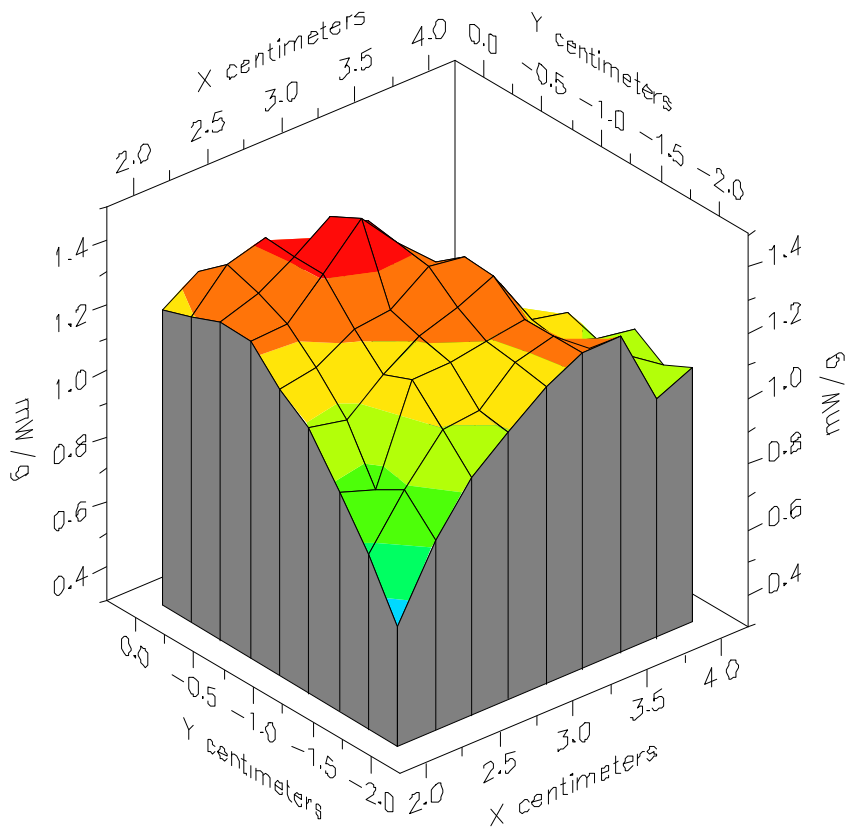


File : 00042410_ZOOM

Start : 24-Apr-100 05:24:09 pm End : 24-Apr-100 05:33:49 pm

SAMSUNG/SCH-855/#02;848.97MHz;W;Helical/Out;

Head/Left Ear;ZOOM/SAR;PCTEST/E Field/0 DegreesBrain/43.400/0.900

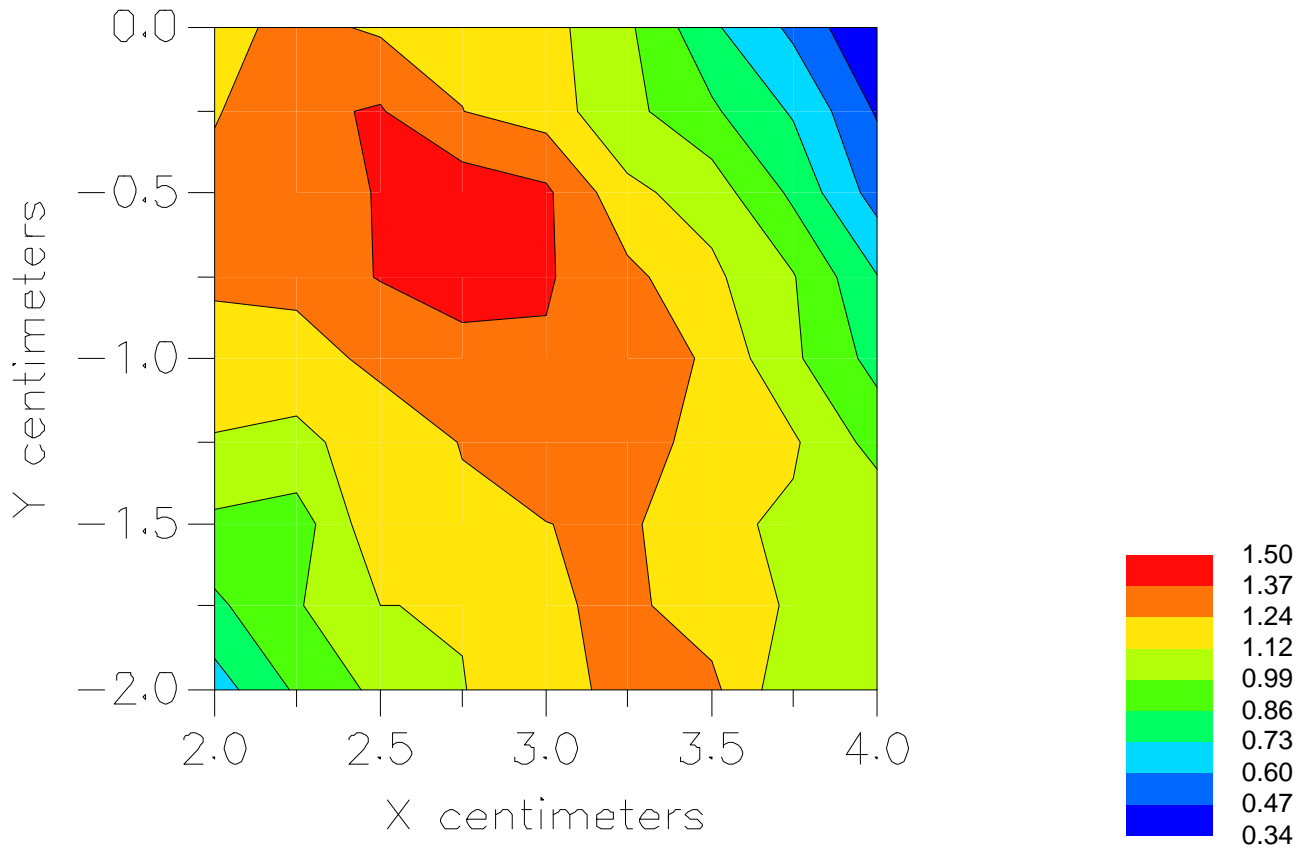


File : 00042410_ZOOM

Start : 24-Apr-100 05:24:09 pm End : 24-Apr-100 05:33:49 pm

SAMSUNG/SCH-855/#02;848.97MHz;W;Helical/Out;

Head/Left Ear;ZOOM/SAR;PCTEST/E Field/0 DegreesBrain/43.400/0.900



File : c:/idx3/SYSTEM/SARMEAS3/data/Normal/00042611_SAR.VLT
Start : 26-Apr-100 12:21:31 pm End : 26-Apr-100 12:28:22 pm

Radio Type : SAMSUNG
Model Number : SCH-855
Serial Number : #02
Frequency : 836.49 MHz
Peak Trans. Pwr : 0.480 W
Start Trans. Pwr: 0.480 W
Antenna Type : Helical
Antenna Posn. : In
Phantom Type : Body
Phantom Posn. : Abdomen
Scan Type : ZOOM/SAR 10g
Probe Name : PCTEST
Field Type : E Field
Orientation : 0 Degrees

Mixture Type = Muscle
Mixture Dielectric Constant = 51.700
Mixture Conductivity = 1.100

Comment :
SAMSUNG DUAL MODE PHONE FM MODE
CHAN 0383 SAR 26.8 dBm CONDUCTED
FCC ID A3LSCH855 HAND SAR FLIP MODE

Robot : PCTEST

Probe Offset = 0.25 cm
Sensor Factor = 0.0108
Conversion Factor = 0.894

PCTEST Amplifier Channel Settings : 0.166 0.135 0.132

Max Location : X = -1.000, Y = -1.750, Z = 0.000 (cm) Value = 36.103

Ave. SAR over 10 g (mW/g) = 1.5802

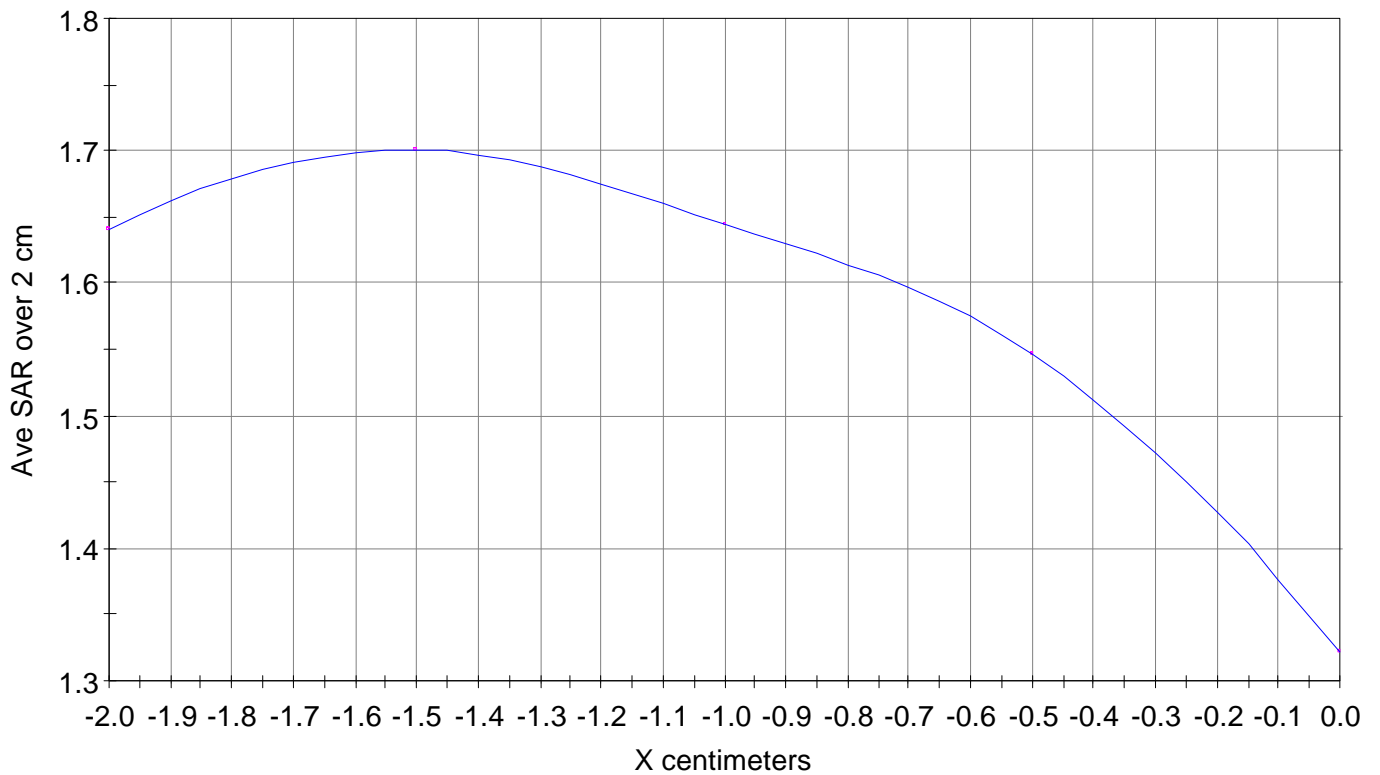
X-Z Plane Slice Y=-1.750

File : 00042611_SAR

Start : 26-Apr-100 12:21:31 pm End : 26-Apr-100 12:28:22 pm

SAMSUNG/SCH-855/#02;836.49MHz;W;Helical/In;

Body/Abdomen;ZOOM/SAR 10g;PCTEST/E Field/0 DegreesMuscle/51.700/1.100

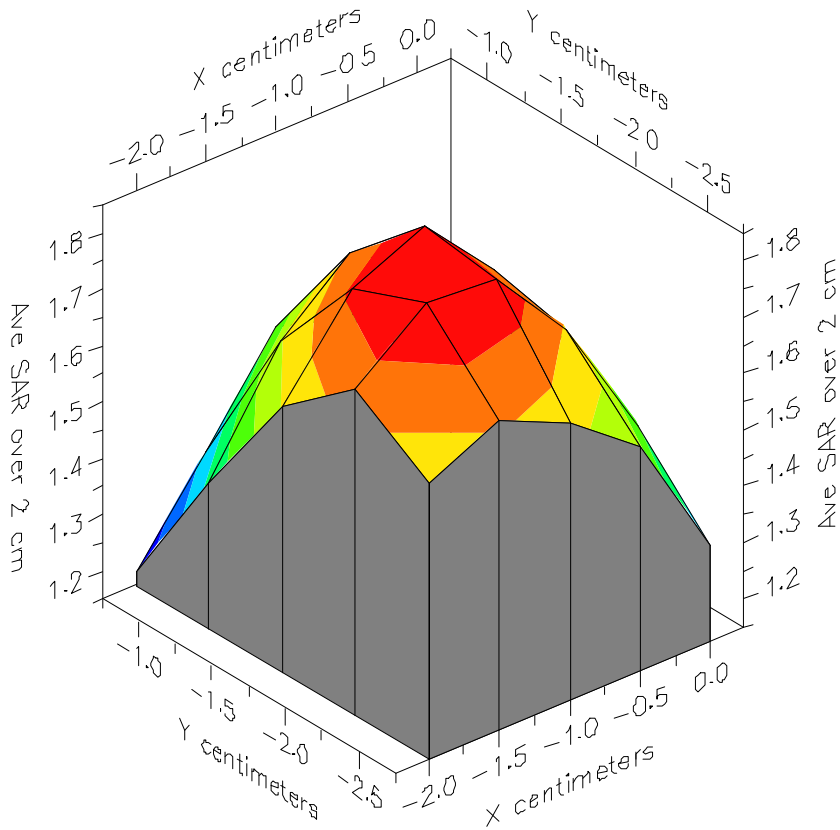


File : 00042611_SAR

Start : 26-Apr-100 12:21:31 pm End : 26-Apr-100 12:28:22 pm

SAMSUNG/SCH-855/#02;836.49MHz;W;Helical/In;

Body/Abdomen;ZOOM/SAR 10g;PCTEST/E Field/0 DegreesMuscle/51.700/1.100

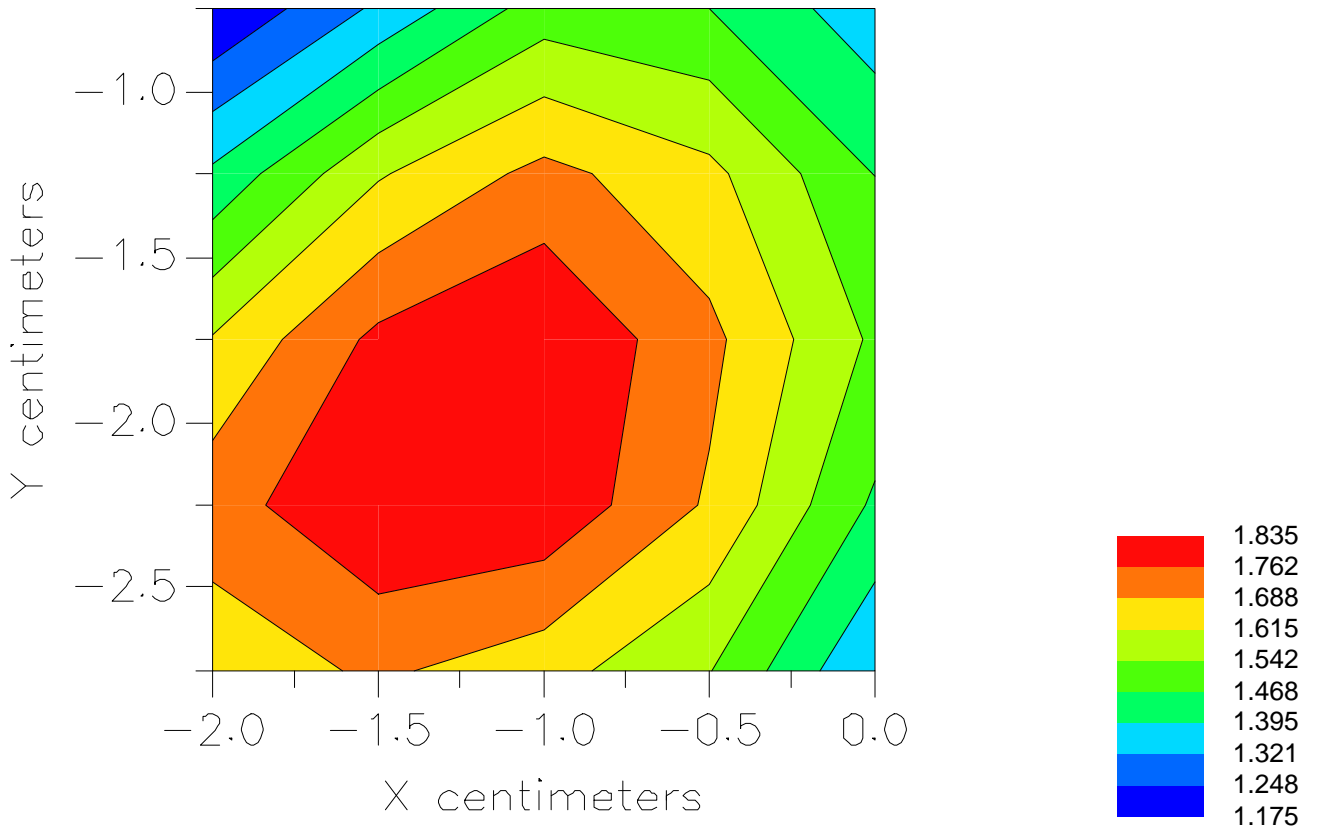


File : 00042611_SAR

Start : 26-Apr-100 12:21:31 pm End : 26-Apr-100 12:28:22 pm

SAMSUNG/SCH-855/#02;836.49MHz;W;Helical/In;

Body/Abdomen;ZOOM/SAR 10g;PCTEST/E Field/0 DegreesMuscle/51.700/1.100



File : c:/idx3/SYSTEM/SARMEAS3/data/Normal/00042612_SAR.VLT
Start : 26-Apr-100 12:49:54 pm End : 26-Apr-100 12:56:39 pm

Radio Type : SAMSUNG
Model Number : SCH-855
Serial Number : #02
Frequency : 836.49 MHz
Peak Trans. Pwr : 0.480 W
Start Trans. Pwr: 0.480 W
Antenna Type : Helical
Antenna Posn. : Out
Phantom Type : Body
Phantom Posn. : Abdomen
Scan Type : ZOOM/SAR 10g
Probe Name : PCTEST
Field Type : E Field
Orientation : 0 Degrees

Mixture Type = Muscle
Mixture Dielectric Constant = 51.700
Mixture Conductivity = 1.100

Comment :
SAMSUNG DUAL MODE PHONE FM MODE
CHAN 0383 SAR 26.8 dBm CONDUCTED
FCC ID A3LSCH855 HAND SAR FLIP MODE

Robot : PCTEST

Probe Offset = 0.25 cm
Sensor Factor = 0.0108
Conversion Factor = 0.894

PCTEST Amplifier Channel Settings : 0.166 0.135 0.132

Max Location : X = -1.000, Y = -1.500, Z = 0.000 (cm) Value = 36.476

Ave. SAR over 10 g (mW/g) = 1.6073

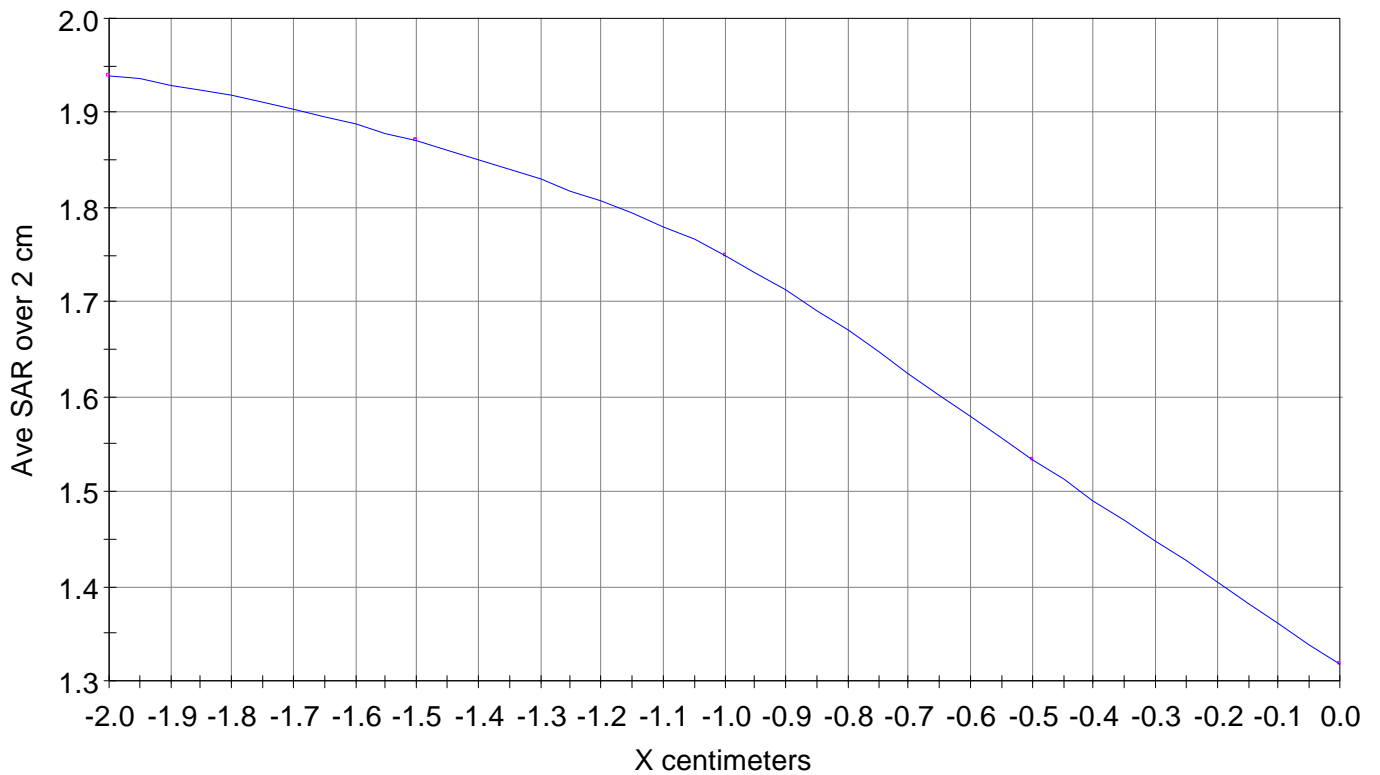
X-Z Plane Slice Y=-1.500

File : 00042612_SAR

Start : 26-Apr-100 12:49:54 pm End : 26-Apr-100 12:56:39 pm

SAMSUNG/SCH-855/#02;836.49MHz;W;Helical/Out;

Body/Abdomen;ZOOM/SAR 10g;PCTEST/E Field/0 DegreesMuscle/51.700/1.100

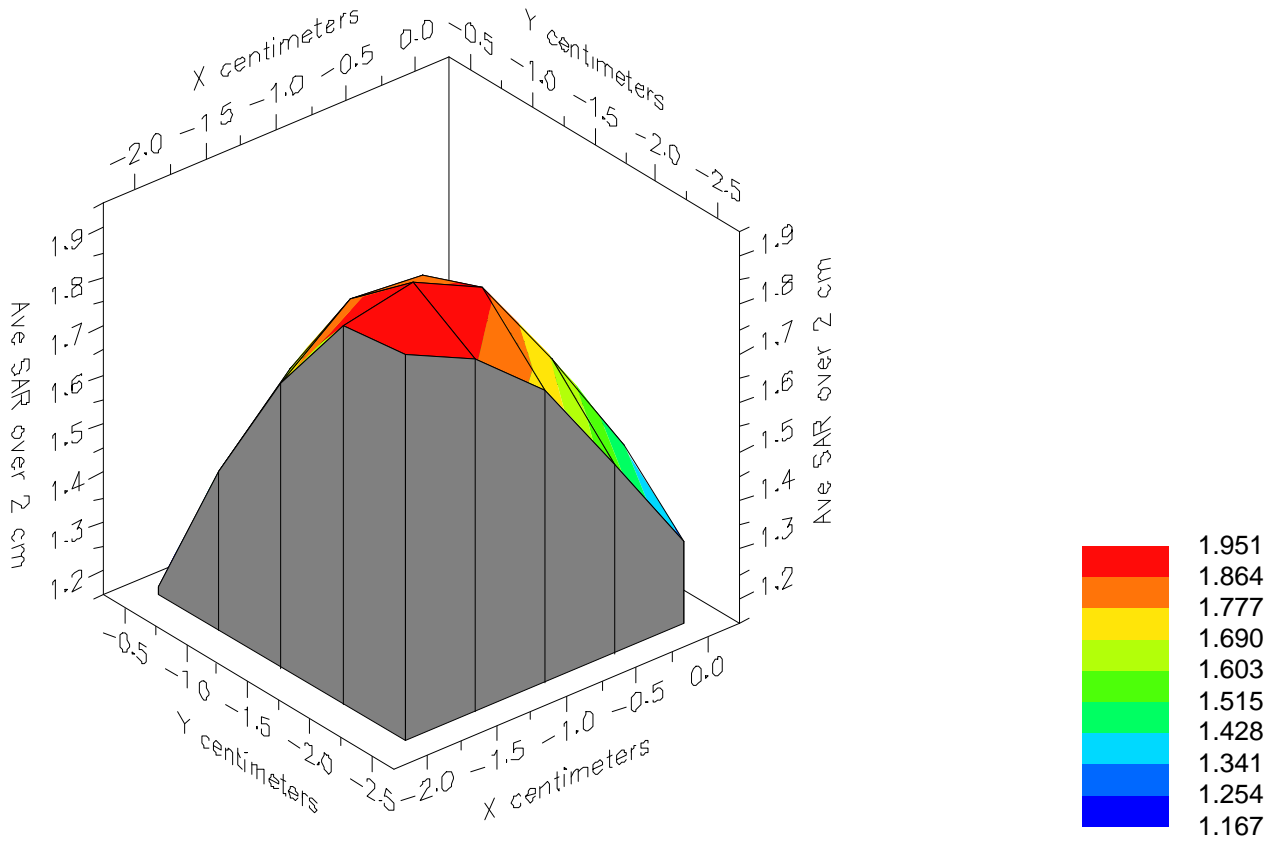


File : 00042612_SAR

Start : 26-Apr-100 12:49:54 pm End : 26-Apr-100 12:56:39 pm

SAMSUNG/SCH-855/#02;836.49MHz;W;Helical/Out;

Body/Abdomen;ZOOM/SAR 10g;PCTEST/E Field/0 DegreesMuscle/51.700/1.100



File : 00042612_SAR

Start : 26-Apr-100 12:49:54 pm End : 26-Apr-100 12:56:39 pm

SAMSUNG/SCH-855/#02;836.49MHz;W;Helical/Out;

Body/Abdomen;ZOOM/SAR 10g;PCTEST/E Field/0 DegreesMuscle/51.700/1.100

