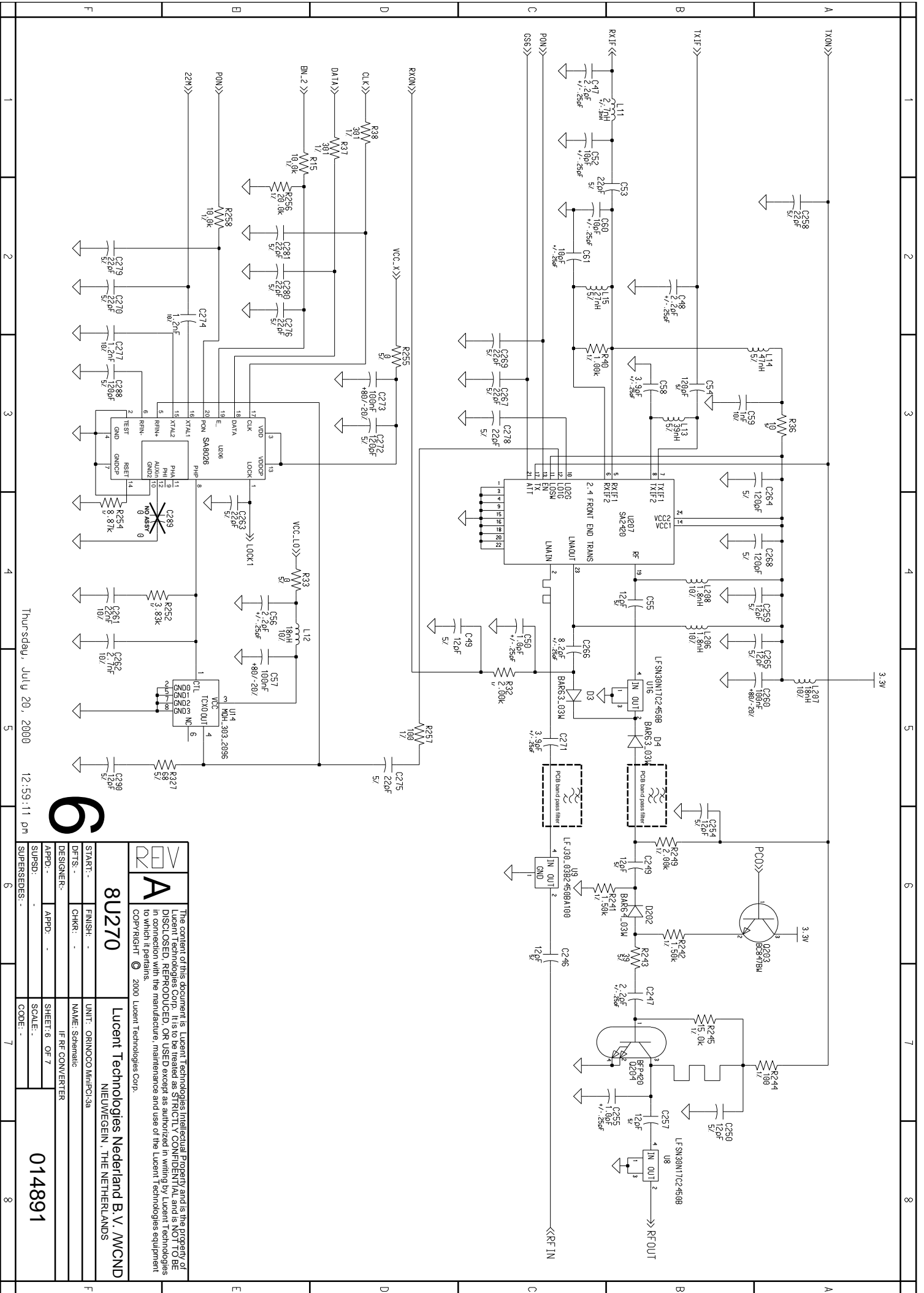


7

Thursday, July 13, 2000 1:15:48 pm

REV A	The content of this document is Lucent Technologies intellectual Property and is the property of Lucent Technologies Corp. It is to be treated as STRICTLY CONFIDENTIAL and is NOT TO BE DISCLOSED, REPRODUCED, OR USED except as authorized in writing by Lucent Technologies in connection with the manufacture, maintenance and use of the Lucent Technologies equipment to which it pertains. COPYRIGHT © 2000 Lucent Technologies Corp.	
	8U270	Lucent Technologies Nederland B.V./WCND NIEUWEGEIN, THE NETHERLANDS
START:-	FINISH:-	UNIT: ORINOCO MiniPC-3a
DFTS:-	CHKR:-	NAME: Schematic
DESIGNER:-	RF POWER AMPLIFIER	
APPD:-	APPD:-	SHEET: 7 OF 7
SUPD:-	SCALE:-	014891
SUPERSEDES:-	CODE:-	



Thursday, July 20, 2000 12:59:11 pm

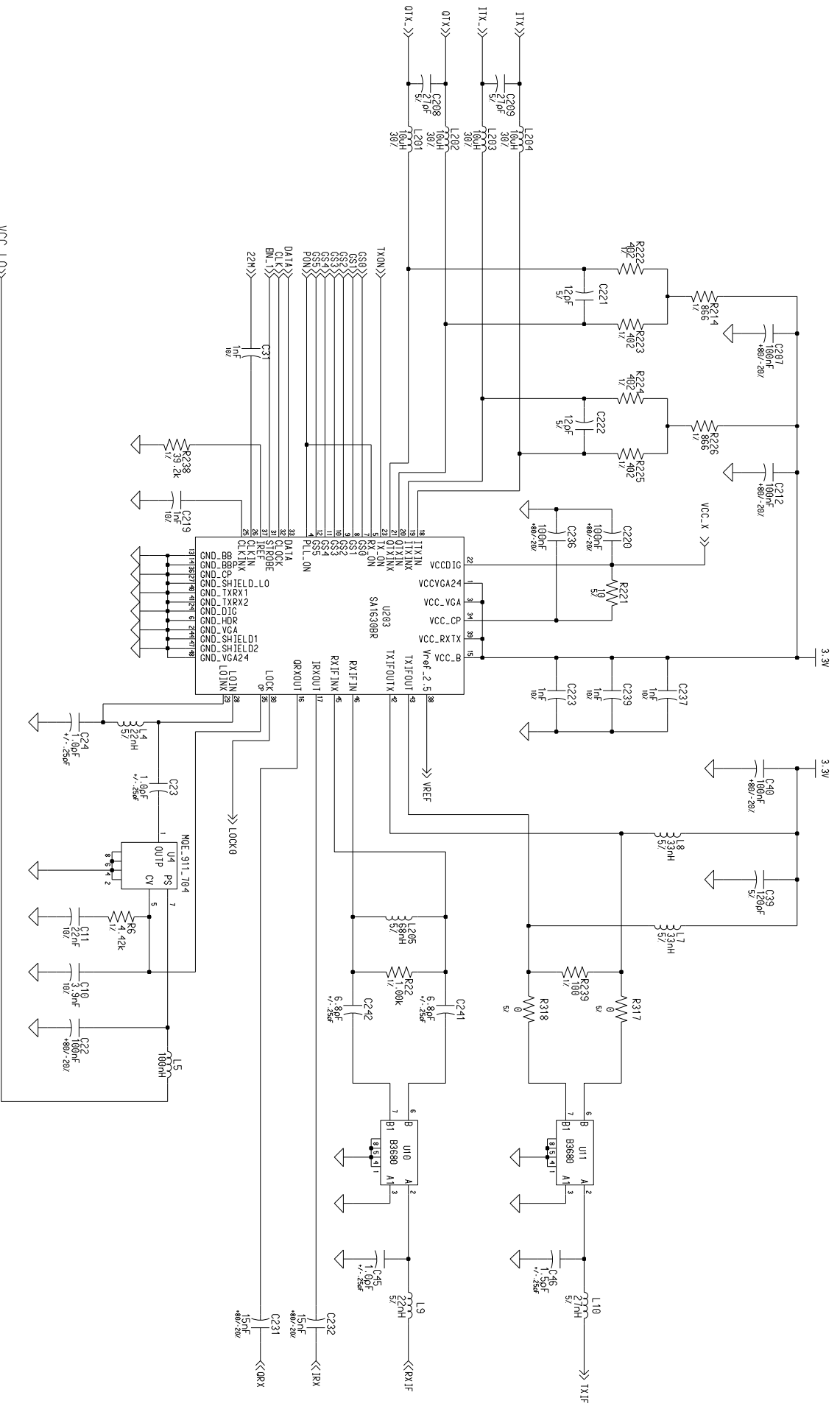
6

REV	A	The content of this document is the property of Lucent Technologies Corp. It is to be treated as STRICTLY CONFIDENTIAL and is NOT TO BE DISCLOSED, REPRODUCED, OR USED except as authorized in writing by Lucent Technologies in connection with the manufacture, maintenance and use of the Lucent Technologies equipment to which it pertains.
REV	A	COPYRIGHT © 2000 Lucent Technologies Corp.
8U270	Lucent Technologies Nederland B.V./WCND	
UNIT: ORINOCO MIPCI-3a	NAME: Schematic	
DFTS: -	OHKR: -	
DESIGNER: -	IF-IP CONVERTER	
APPD: -	APPD: -	
SUPSD: -	SHEET: 6 OF 7	
SUPRSEDES: -	SCALE: -	
	CODE: -	

8U270

Lucent Technologies Nederland B.V./WCND
NIEUWEGEN, THE NETHERLANDS

014891

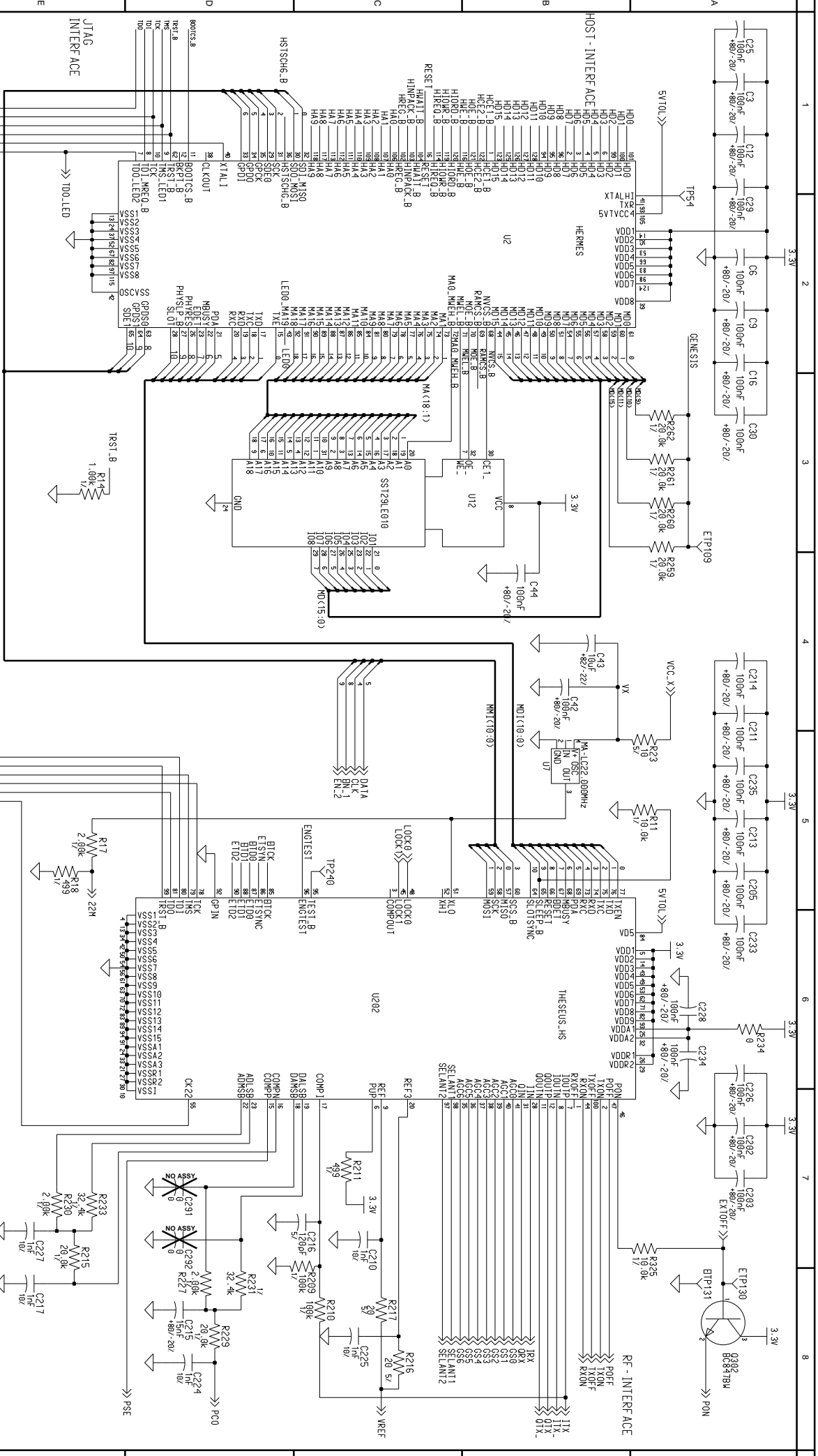


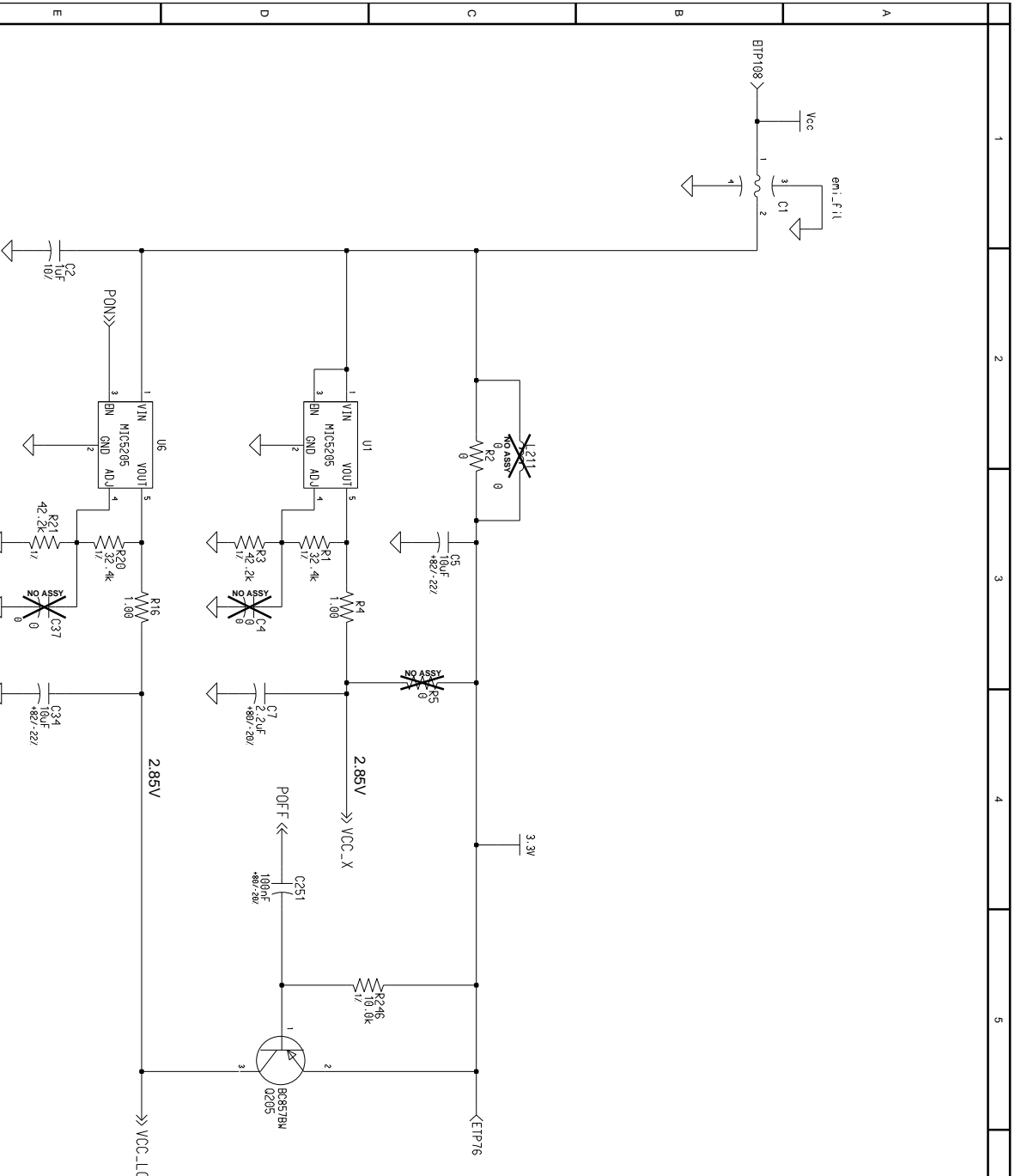
REV	A	The content of this document is the property of Lucent Technologies Corp. It is to be treated as STRICTLY CONFIDENTIAL and is NOT TO BE DISCLOSED, REPRODUCED, OR USED except as authorized in writing by Lucent Technologies in connection with the manufacture, maintenance and use of the Lucent Technologies equipment to which it pertains.
8U270	Lucent Technologies Nederland B.V./WCND	Copyright © 2000 Lucent Technologies Corp.
START: -	FINISH: -	UNIT: ORINOC MiniPC1-3a
DESIGNER: -	CHKR: -	NAME: Schematic
APPD: -	APPD: -	IF-TRANSCIVER
SUPSD: -	SHEET: 5 OF 7	SCALE: -
SUPERSEDES: -	CODE: -	

014891

Thursday, July 13, 2000

1:10:54 pm





ETP14	ETP58
ETP51	ETP119
ETP63	ETP94
ETP8	ETP28
ETP7	ETP30
ETP14	ETP32
ETP13	ETP33
ETP12	ETP35
ETP11	ETP38
ETP10	ETP89
ETP6	ETP40
ETP5	ETP71
ETP3	ETP14
ETP2	ETP42
ETP1	ETP30
ETP49	ETP43
ETP120	ETP45
ETP105	ETP104
ETP4	ETP48
ETP85	ETP75
ETP19	ETP50
ETP22	ETP83
ETP47	ETP52
ETP107	ETP54
ETP20	ETP27
ETP19	ETP56
ETP110	ETP101
ETP103	ETP106
ETP77	ETP69
ETP21	ETP72
ETP91	ETP98
ETP112	ETP121
ETP41	ETP83
ETP46	ETP24
ETP44	ETP117
ETP41	ETP115
ETP18	ETP102
ETP80	ETP123
ETP17	ETP87
ETP16	ETP26

3

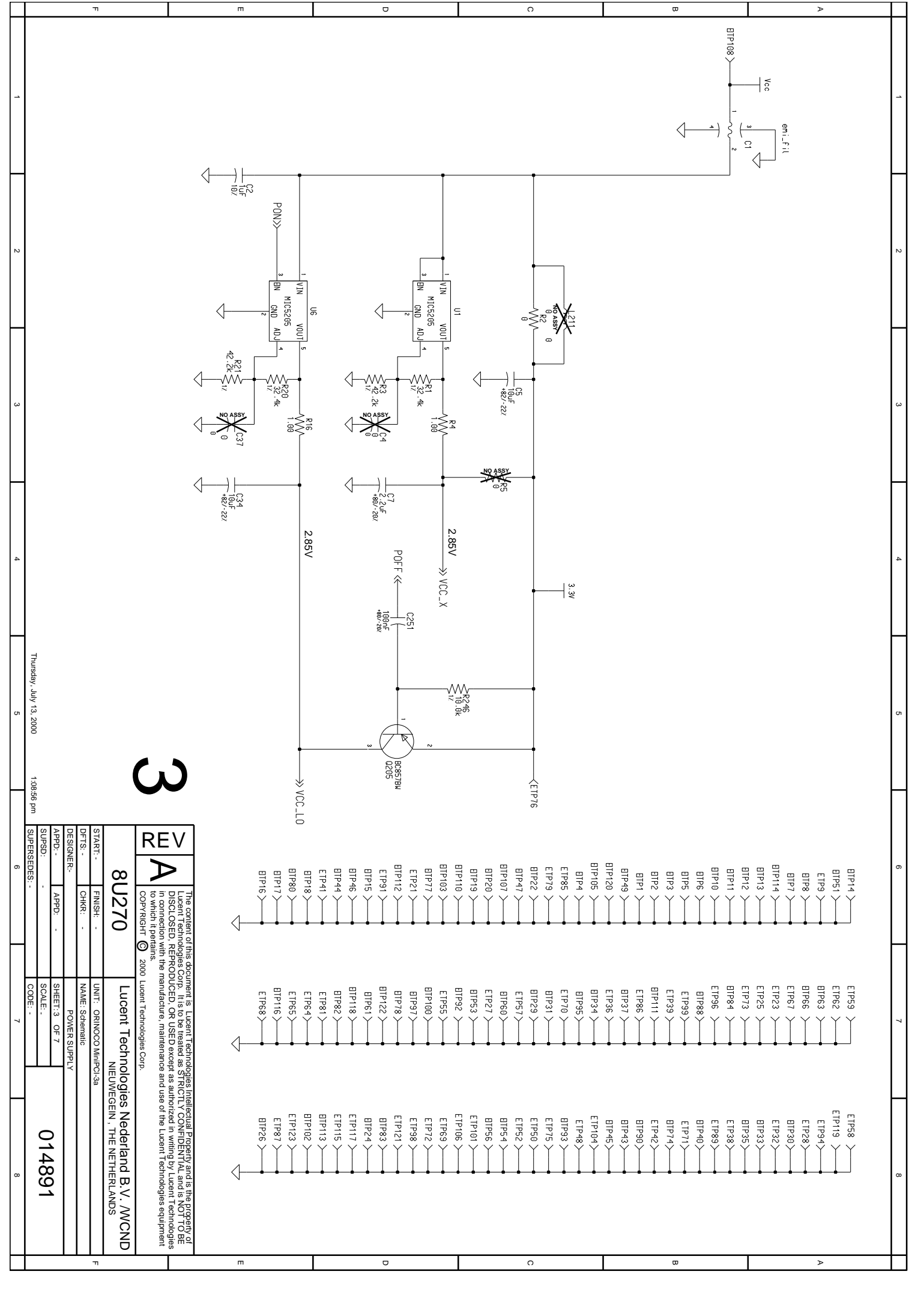
REV	A
START:-	FINISH:-
DFTS:-	CHKR:-
DESIGNER:-	NAME: Schematic
APPD:-	APPD:-
SUPSD:-	SHEET: 3 OF 7
SUPRSEDES:-	SCALE:-
	CODE:-

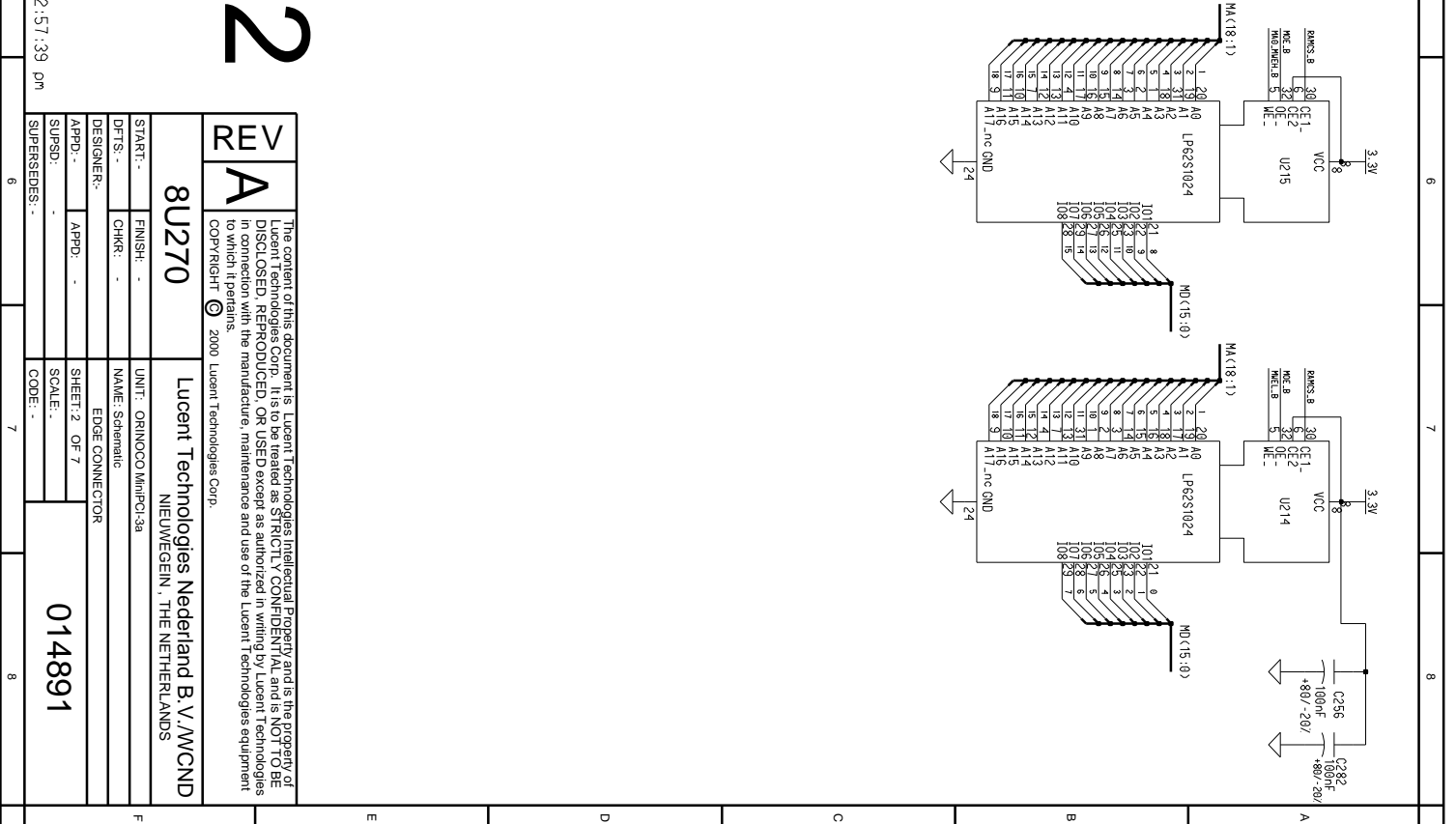
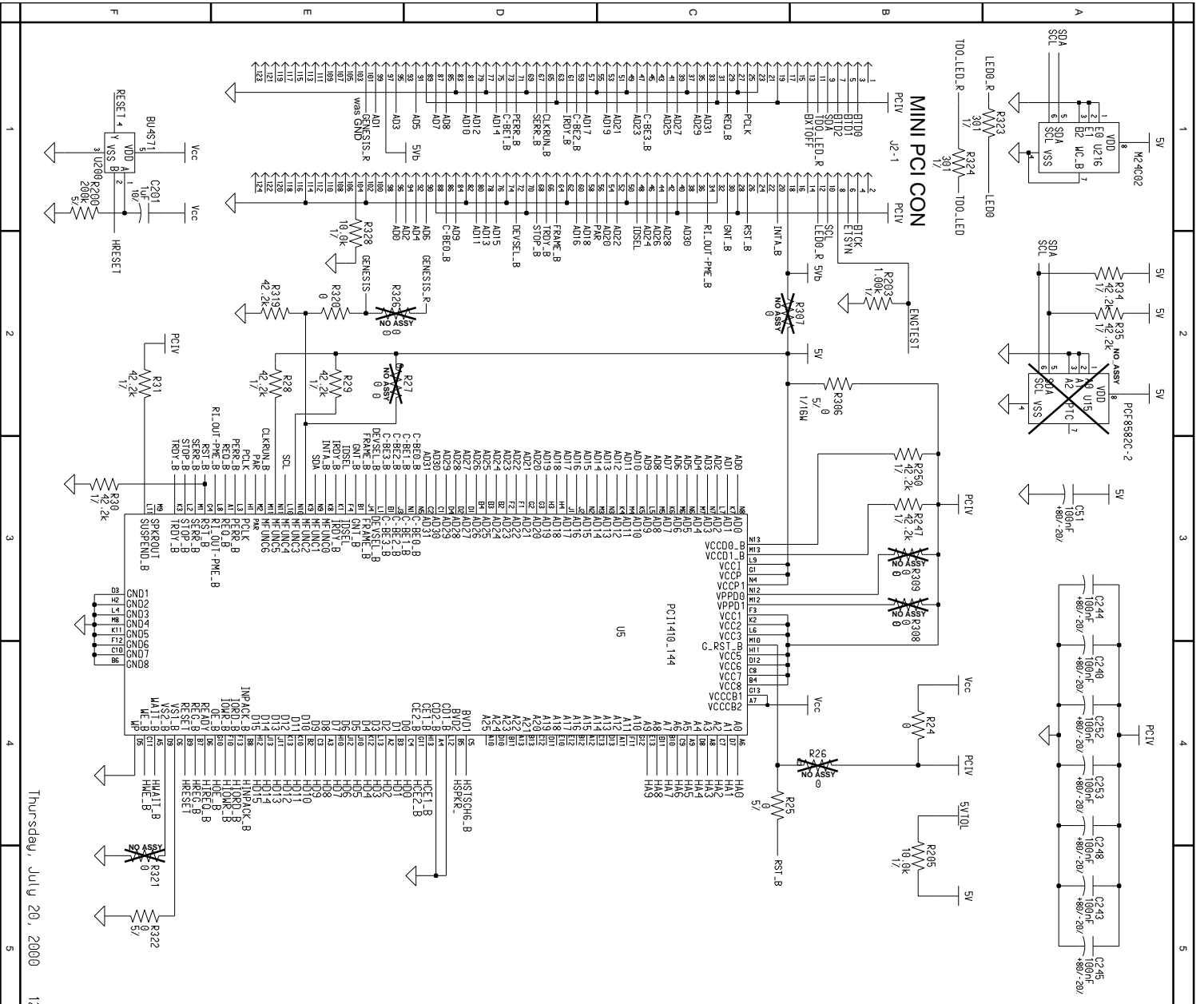
8U270 Lucent Technologies Nederland B.V./WCND NIEUWEGEN, THE NETHERLANDS

014891

Thursday, July 13, 2000

1:08:56 pm





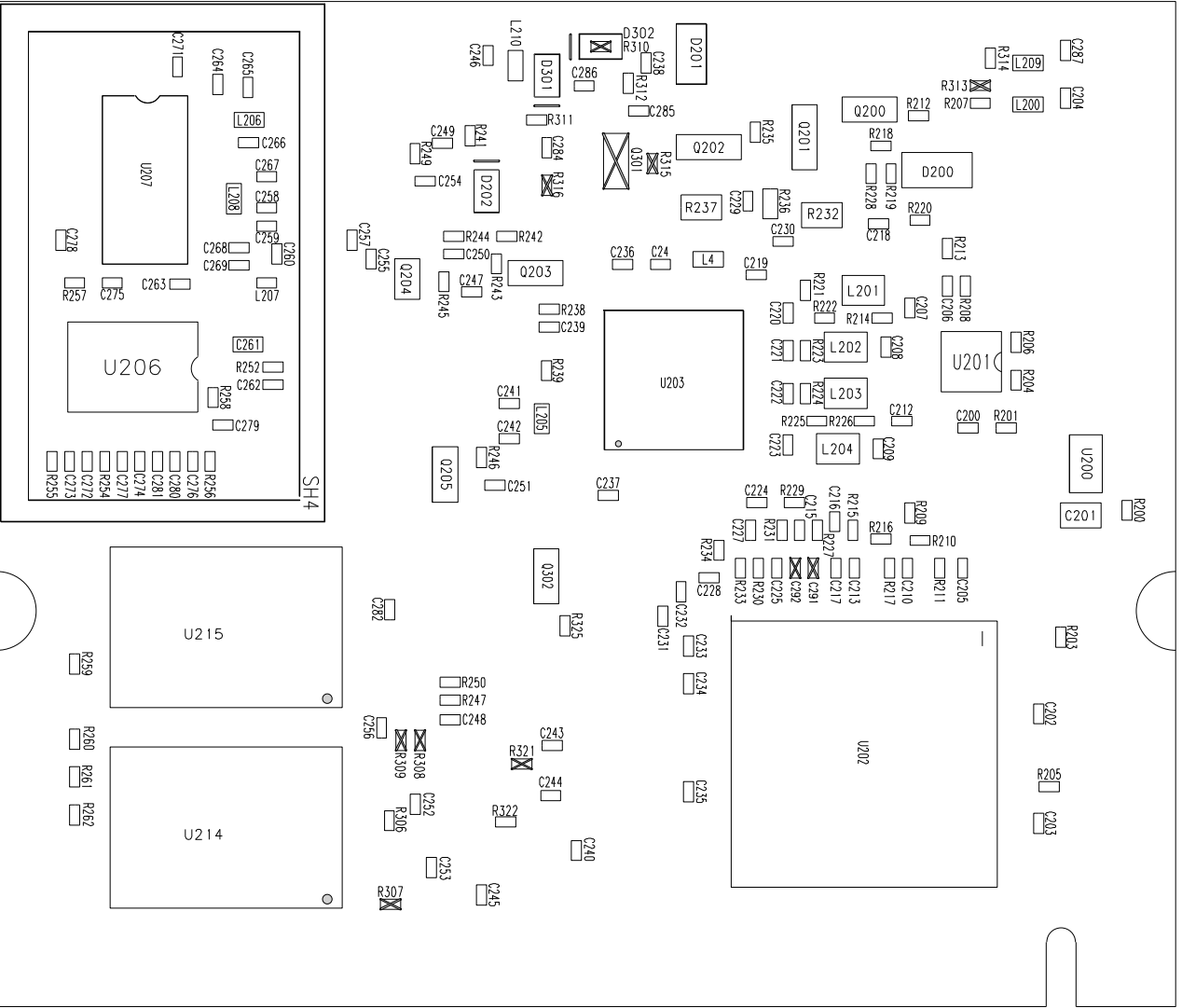
REV	A
8U270	Lucent Technologies Nederland B.V./WCND
UNIT:	ORINOCO MiniPCI-3a
NAME:	Schematic
DESIGNER:	EDGE CONNECTOR
APPD.:	APPD.:
SHEET:	2 OF 7
SCALE:	---
SUPERS:	---
CODE:	---

The content of this document is Lucent Technologies Intellectual Property and is the property of Lucent Technologies Corp. It is to be treated as STRICTLY CONFIDENTIAL and is NOT TO BE DISCLOSED, REPRODUCED, OR USED except as authorized in writing by Lucent Technologies in connection with the manufacture, maintenance and use of the Lucent Technologies equipment to which it pertains.

© 2000 Lucent Technologies Corp.

014891

Thursday, July 20, 2000 12:57:39 pm



REV	A	<p>THE CONTENT OF THIS DOCUMENT IS LUCCENT TECHNOLOGIES INTELLECTUAL PROPERTY AND IS THE PROPERTY OF LUCCENT TECHNOLOGIES CORP. IT IS TO BE TREATED AS STRICTLY CONFIDENTIAL AND NOT TO BE DISCLOSED TO ANY OTHER PERSON OR ENTITY WITHOUT THE WRITTEN PERMISSION OF LUCCENT TECHNOLOGIES. ANY REPRODUCTION OR TRANSMISSION OF THIS DOCUMENT WITHOUT THE WRITTEN PERMISSION OF LUCCENT TECHNOLOGIES IS PROHIBITED. THE MANUFACTURE, MAINTENANCE AND USE OF THE LUCCENT EQUIPMENT TO WHICH IT PERTAINS. COPYRIGHT © 2000, LUCCENT TECHNOLOGIES CORP.</p>
8U270	Lucent Technologies NEDERLAND BV/WCND	
START:	FINISH: 07-00	UNIT: ORINOCO Mini:PCI PCI-36
DFTS:	CHKR:	NAME: BOARD ASSY BACK SA8026 version
DESIGNER: Jon Waielmo		
APPD:	APPD:	SHEET 6 OF 6
SUPSD BY:		SCALE:
SUPERSEDES:		CODE: -
		014890