





SAMSUNG SENS Pro 750

Input: 100V rms-2.65A (MAX)

This device complies with part 15 of FCC Rules. Operation is subject to the following two conditions:
 (1) This device may not cause harmful interference, and
 (2) This device must accept any interference received, including interference that may originate from radio transmitting devices.

FCC ID: A3L-S750

CAUTION For use with SAMSUNG A800001011.

Model: SENS Pro 750
 Part Number: A3L-S750
 Revision: 1.0

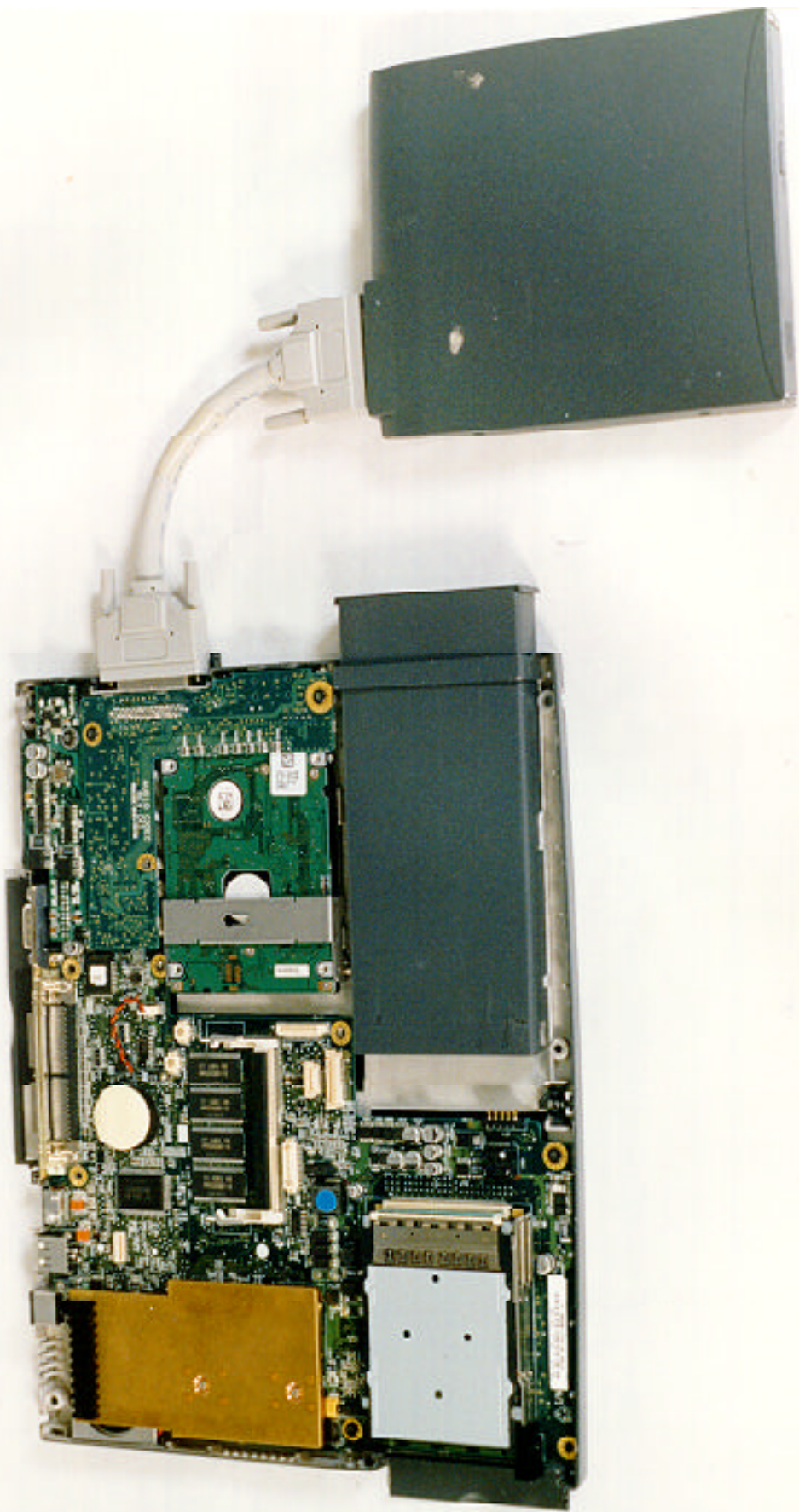
© 2004 Samsung Electronics Co., Ltd. All rights reserved.

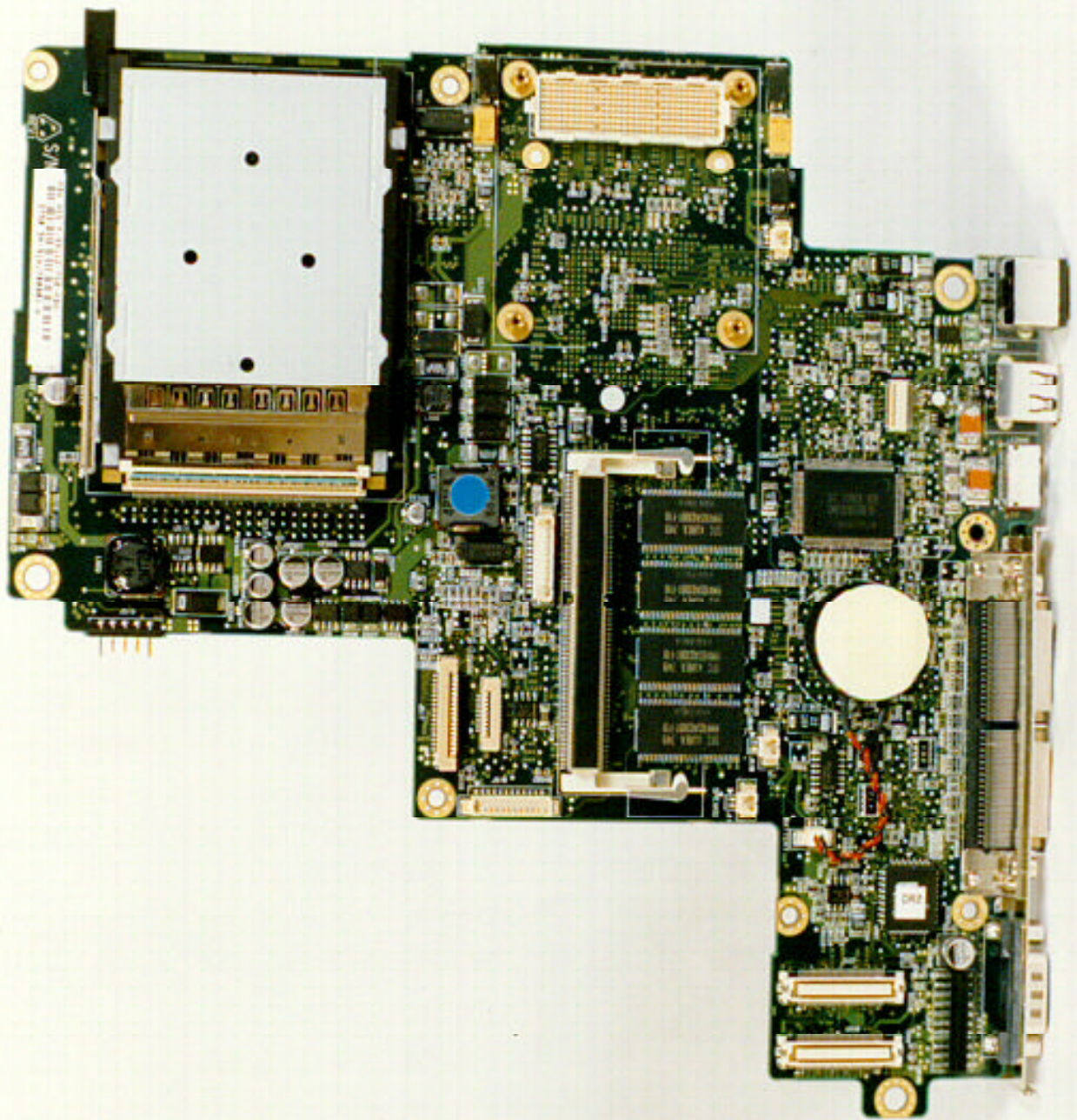
CE

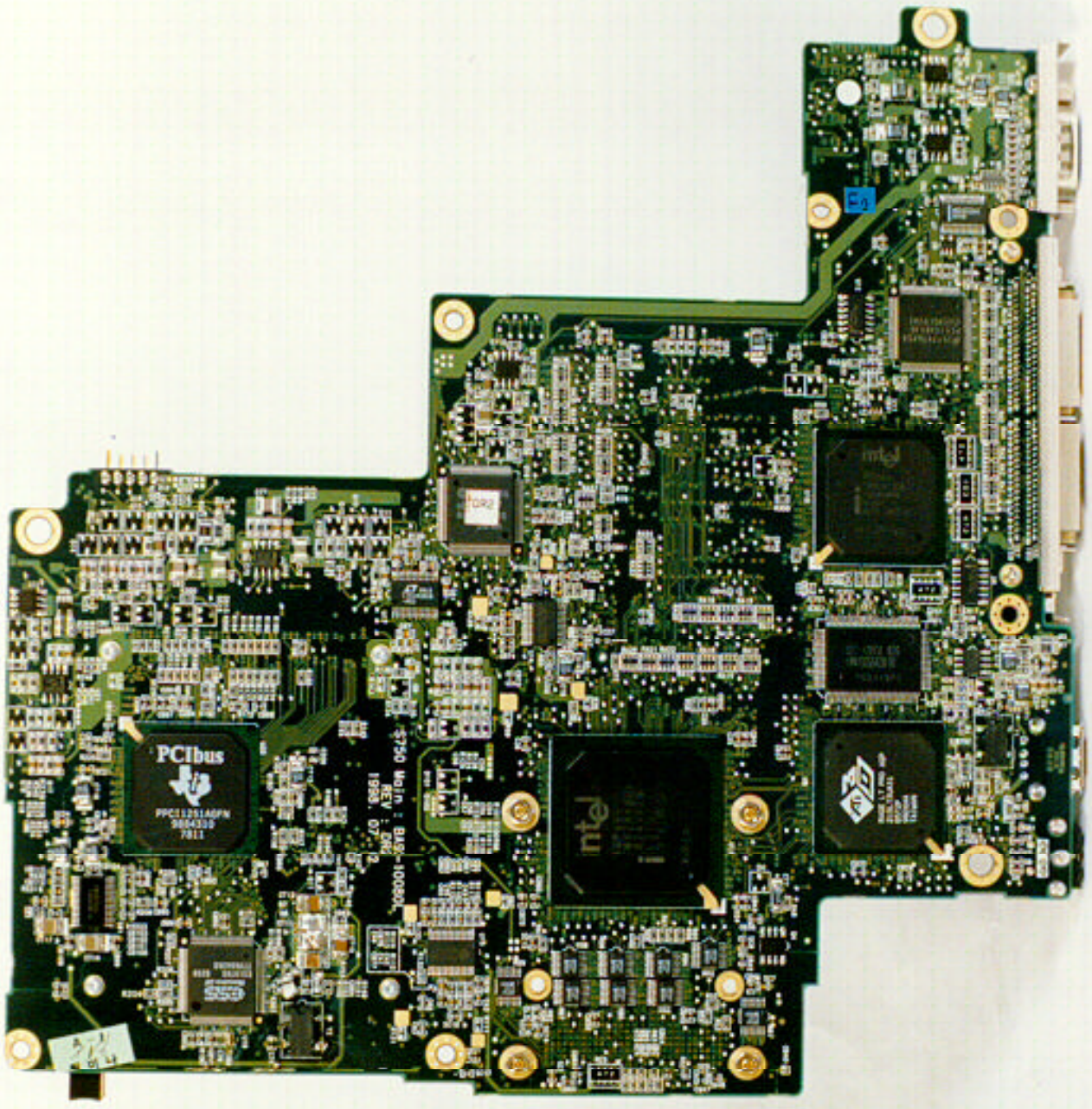
UL

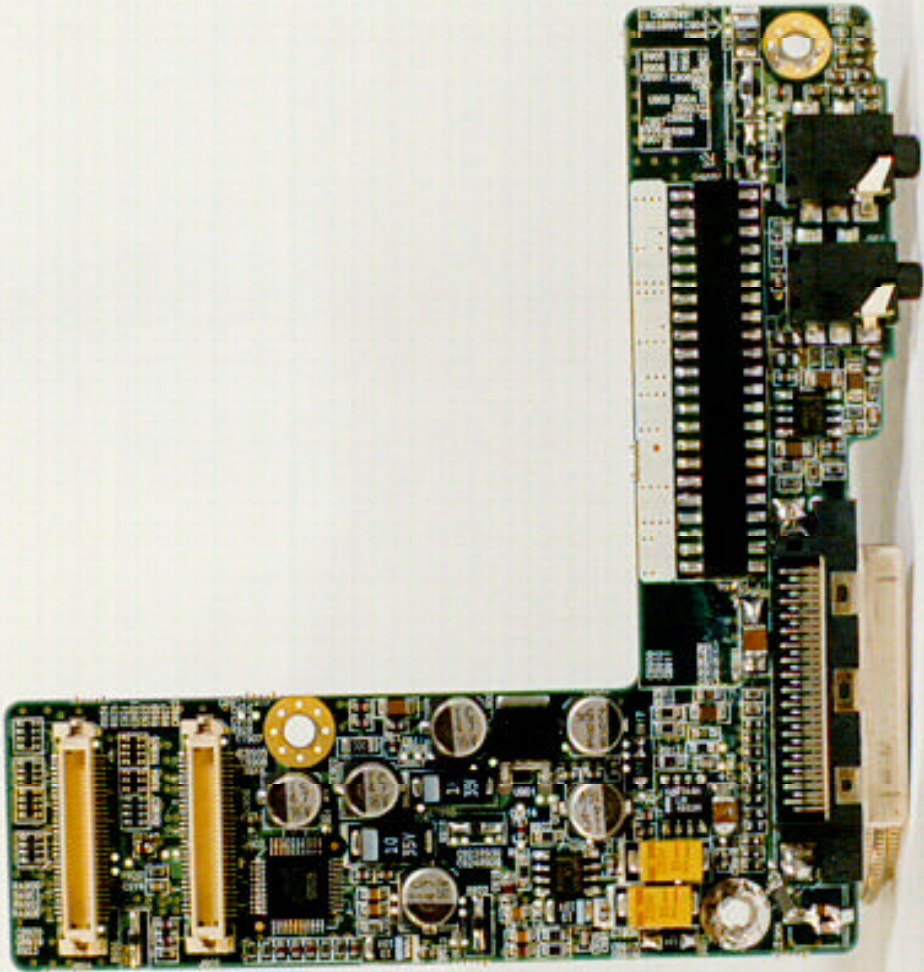
EN 60950

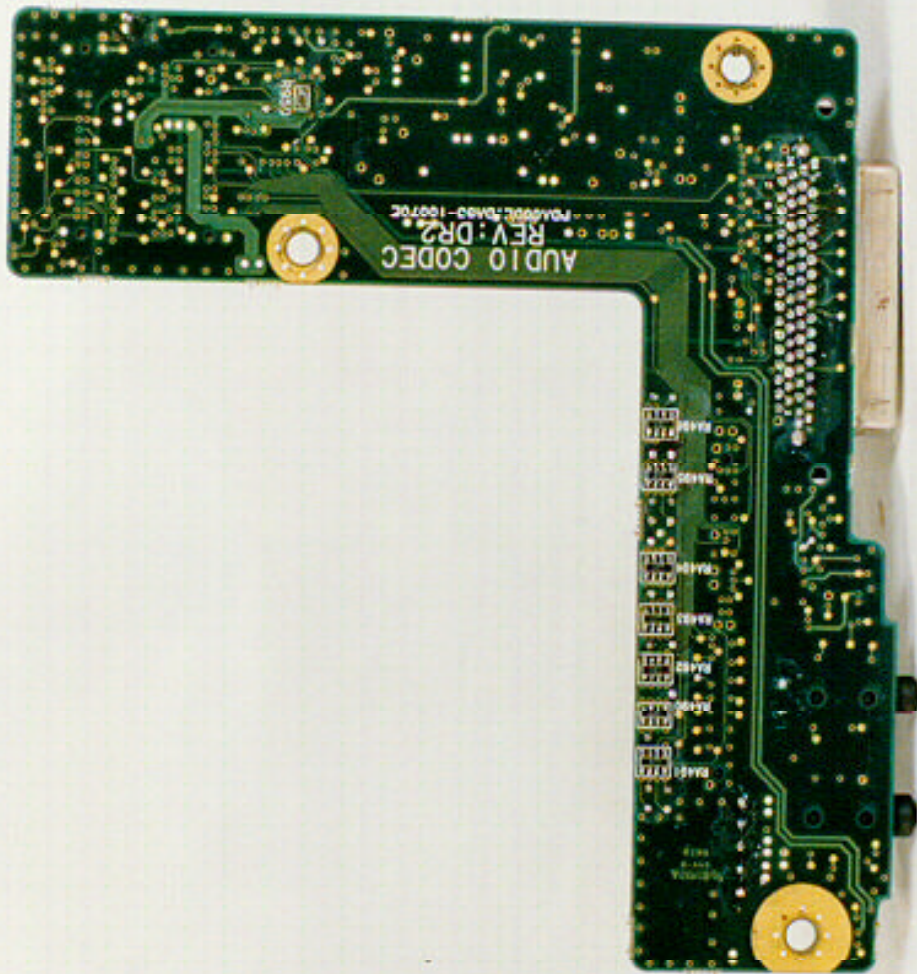


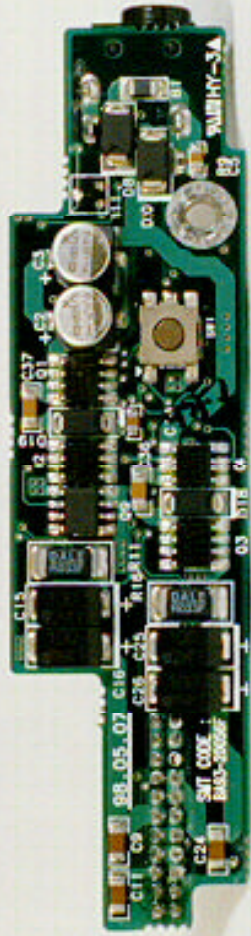


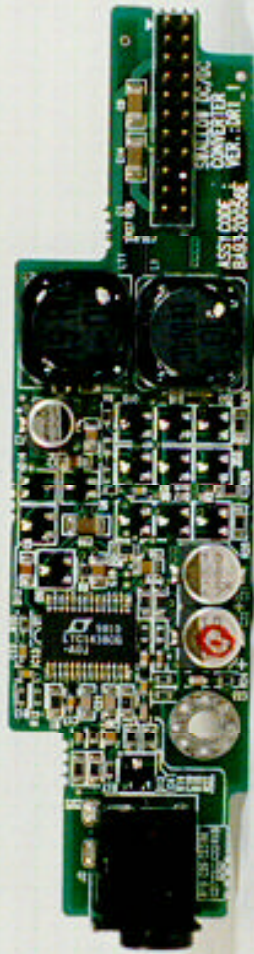












33454110700
ASST CONF
CANTERBURY
REV. 3.001

LTC1410
402







AST Part No. : 23481-011 Model : AC2019
 INPUT : 100-250V-50/60Hz, 1.3 - 0.7A Output : 19V --- 0.53A

CAUTION : MOOR USE ONLY. INTENDED FOR USE IN PROTECTED ENVIRONMENT.
 WARNING : SHOCK HAZARD DO NOT OPEN.
 AVIS : RISQUE DE CHOC ELECTRIQUE NE PAS OUVRIER.
 Excluid for India/Indonesia






75-11-0701
 Input : AC100-250V / 50/60Hz-0.7A
 Output : DC 19V 0.53A
 MADE IN TAIWAN
 CULUS
 Used by Acer
 DC 947

