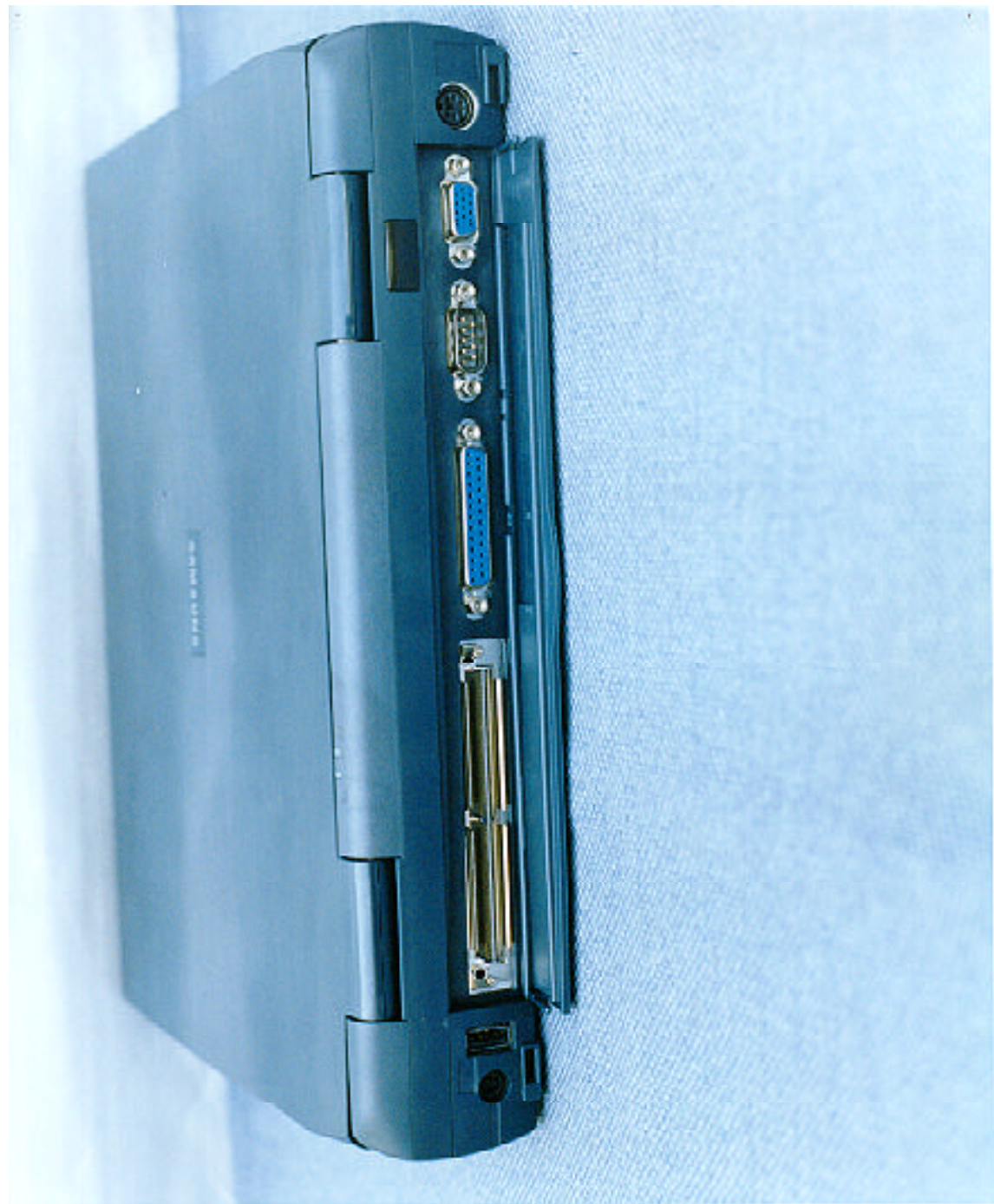
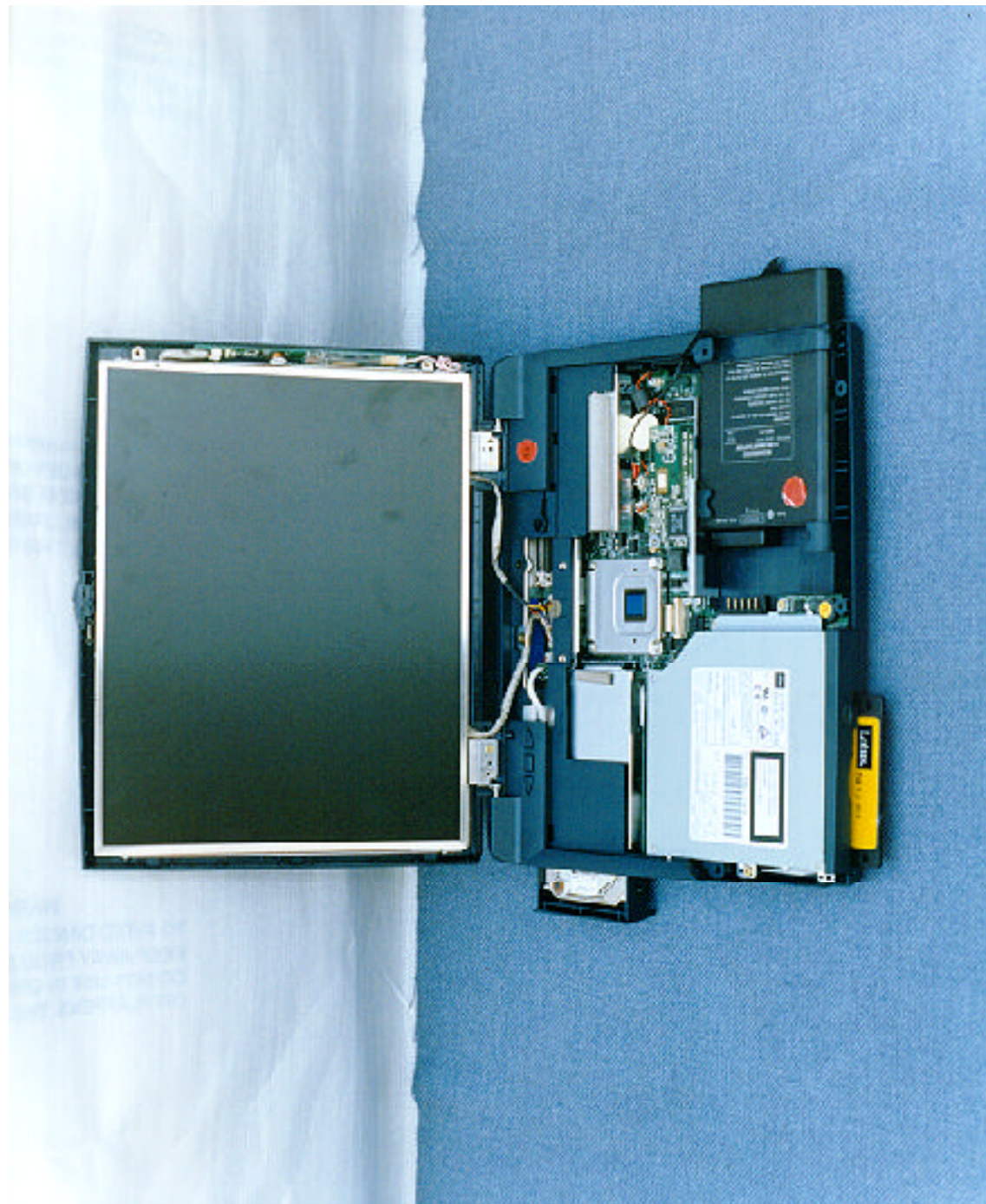


# **A3LS730 PHOTOGRAPHICS**

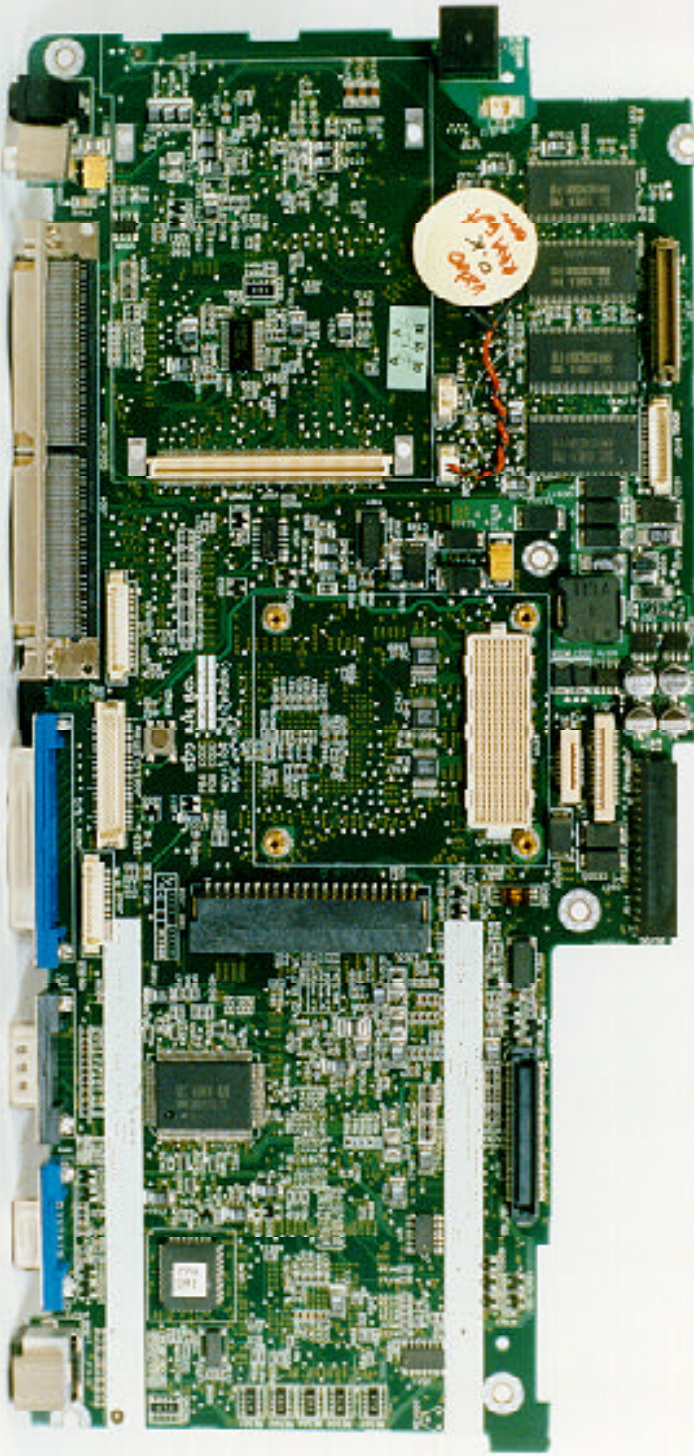
- ;Û A3LS730 FRONT & REAR VIEW**
- ;Û OPEN SIDE**
- ;Û MANI BOARD FRONT & REAR VIEW**
- ;Û MODEM BOARD FRONT & REAR VIEW**
- ;Û DC/DC BOARD FRONT & REAR VIEW**
- ;Û INVERTOR BOARD FRONT & REAR VIEW**
- ;Û AC ADAPTER**
- ;Û ADAPTER PCB FRONT & REAR VIEW**

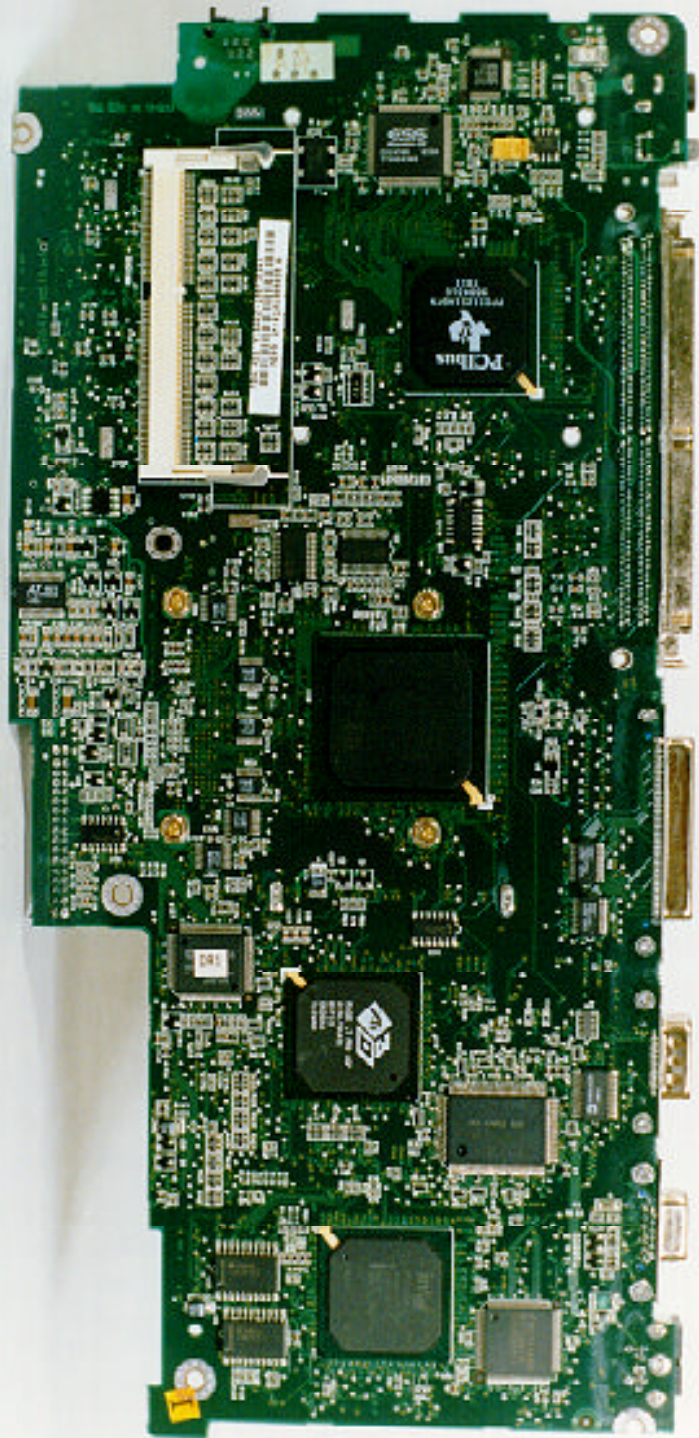


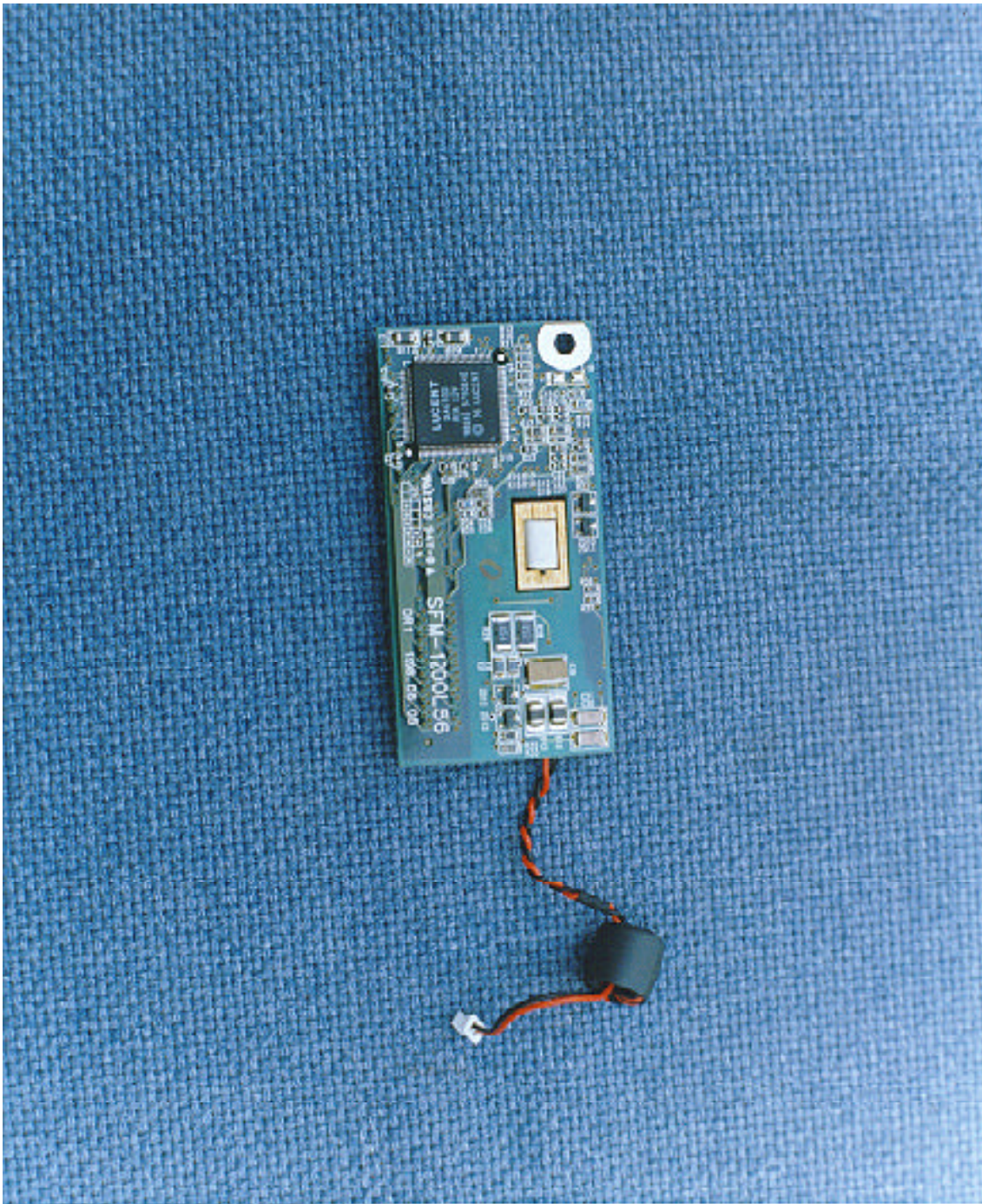


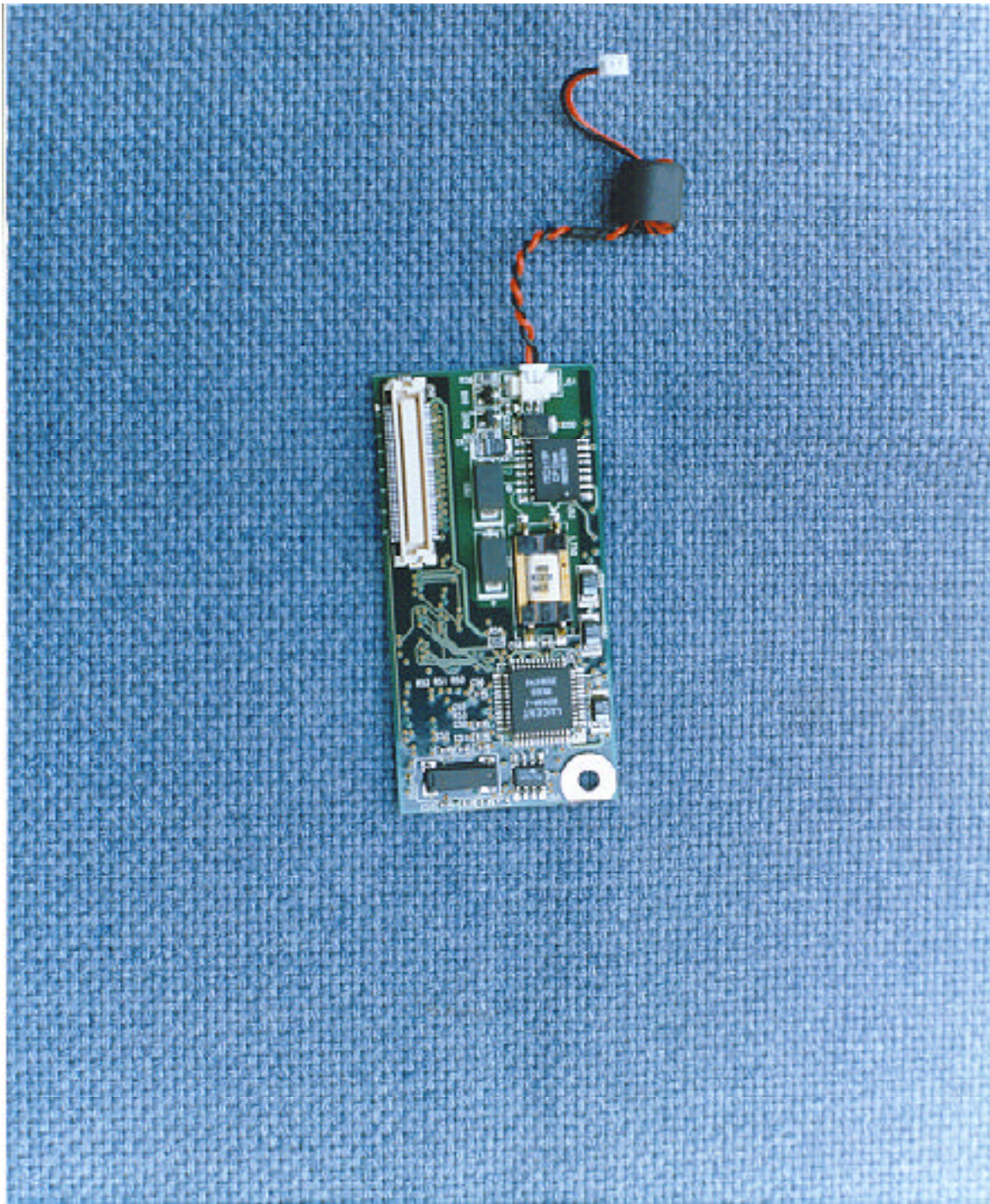


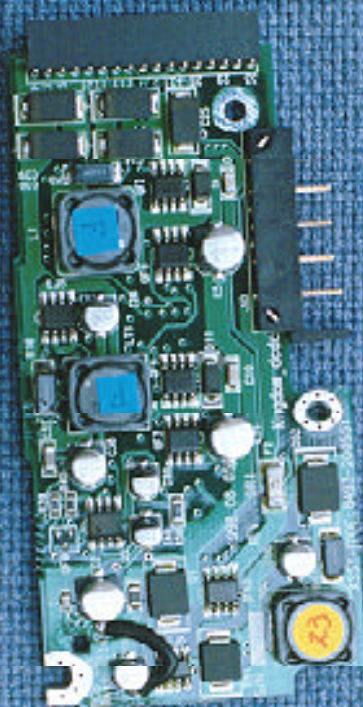


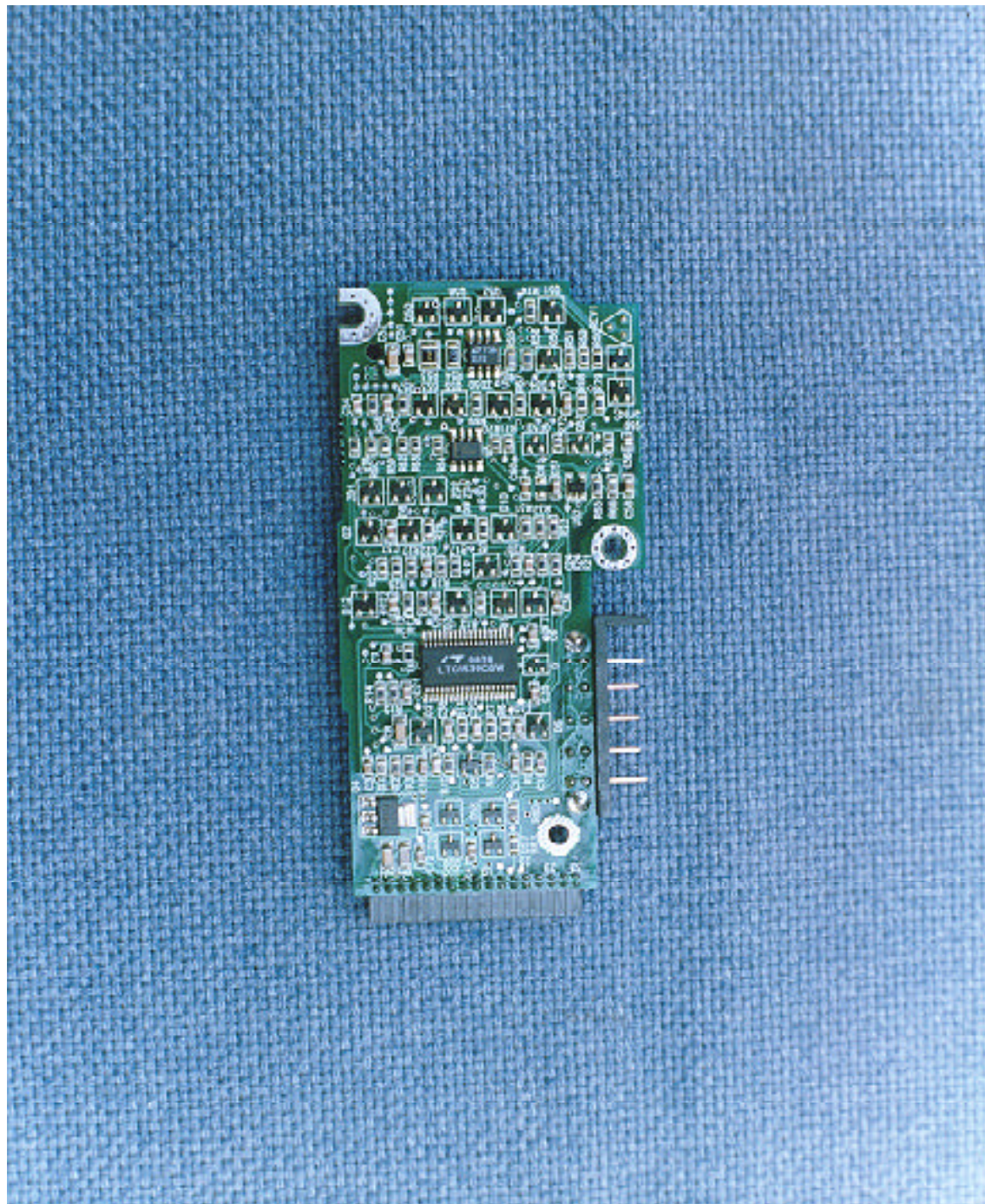


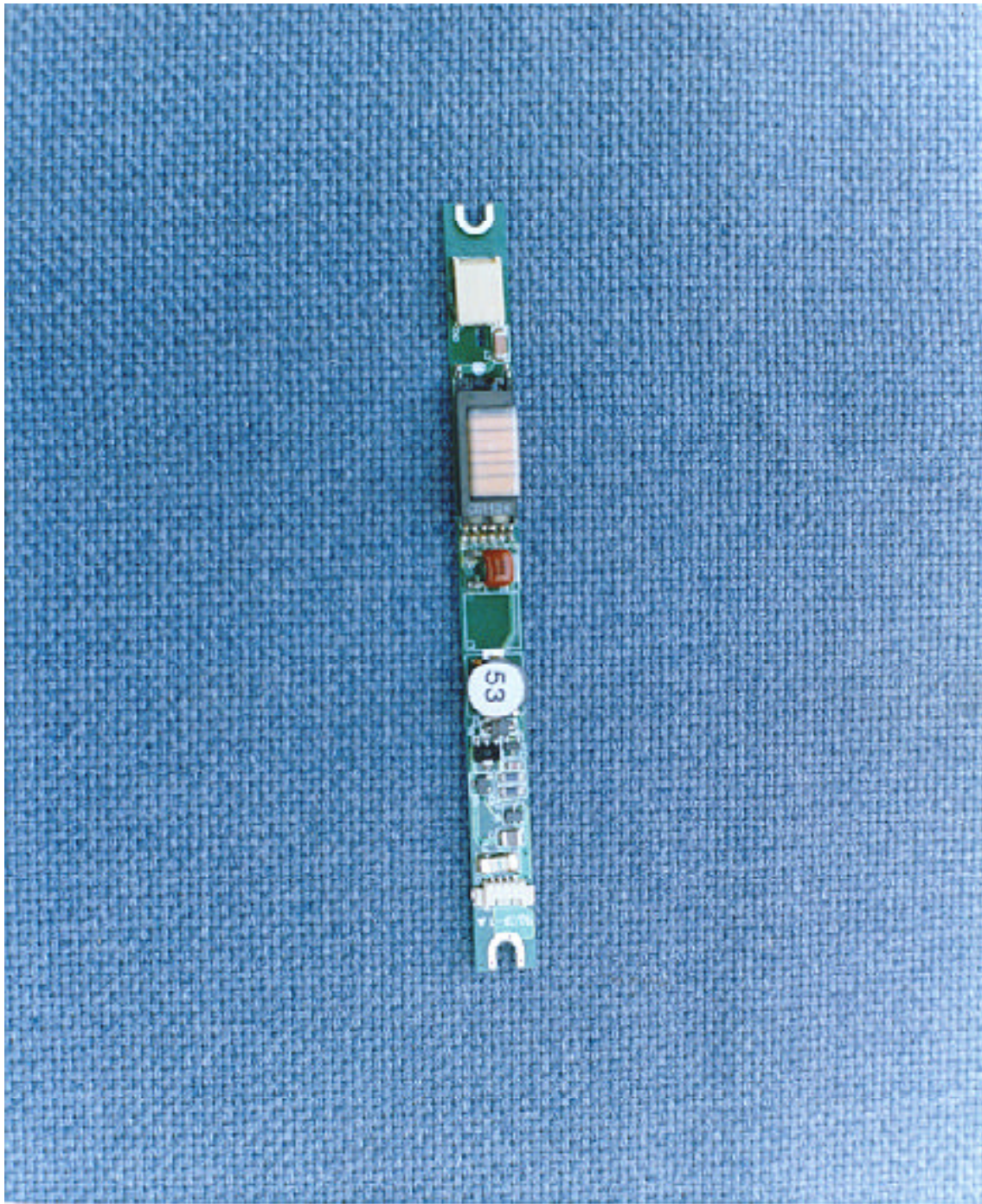


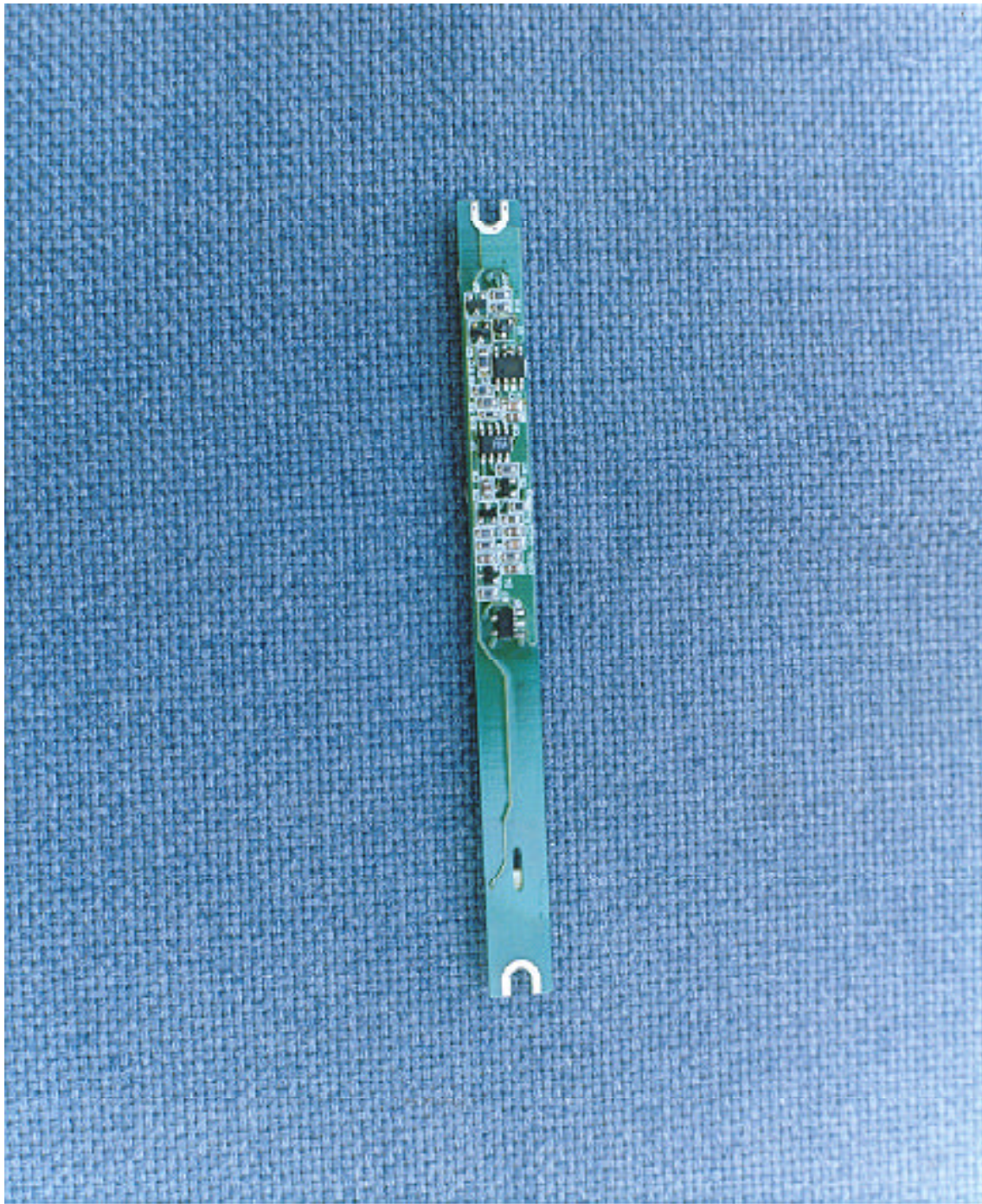














**AC ADAPTER** AD-5619L  
INPUT: 100-240V ~ 1.3A 50/60Hz  
OUTPUT: 15V 2.5A  
FOR USE WITH INFORMATION IN  
TECHNOLOGY EQUIPMENT ONLY  
CAUTION: EXPLOSION HAZARD  
DO NOT OPEN  
SAMSUNG ELECTRO-MECHANICS CO., LTD. 950  
MADE IN KOREA  
REV. 1.4  
SN: 95000000

