

FCC ID:A3LLS27E310

Date:2015/1/13

TO: Federal Communication Commission

Please be notified that we, the undersigned, **Samsung Electronics Co., Ltd.** declare that the models can use two panels. The panel information as bellow:

**1:Panel information**

The two test reports are for two panels. Please refer to the below form for detailed information:

Item	information	Tset report
panel	M270HGE-L30	LBE20146312
	M270HTN01.1	LBE20146317

Thank you!

Peter Ra, Manager

Samsung Electronics Co., Ltd.



## The photos



M270HGE-L30 front view



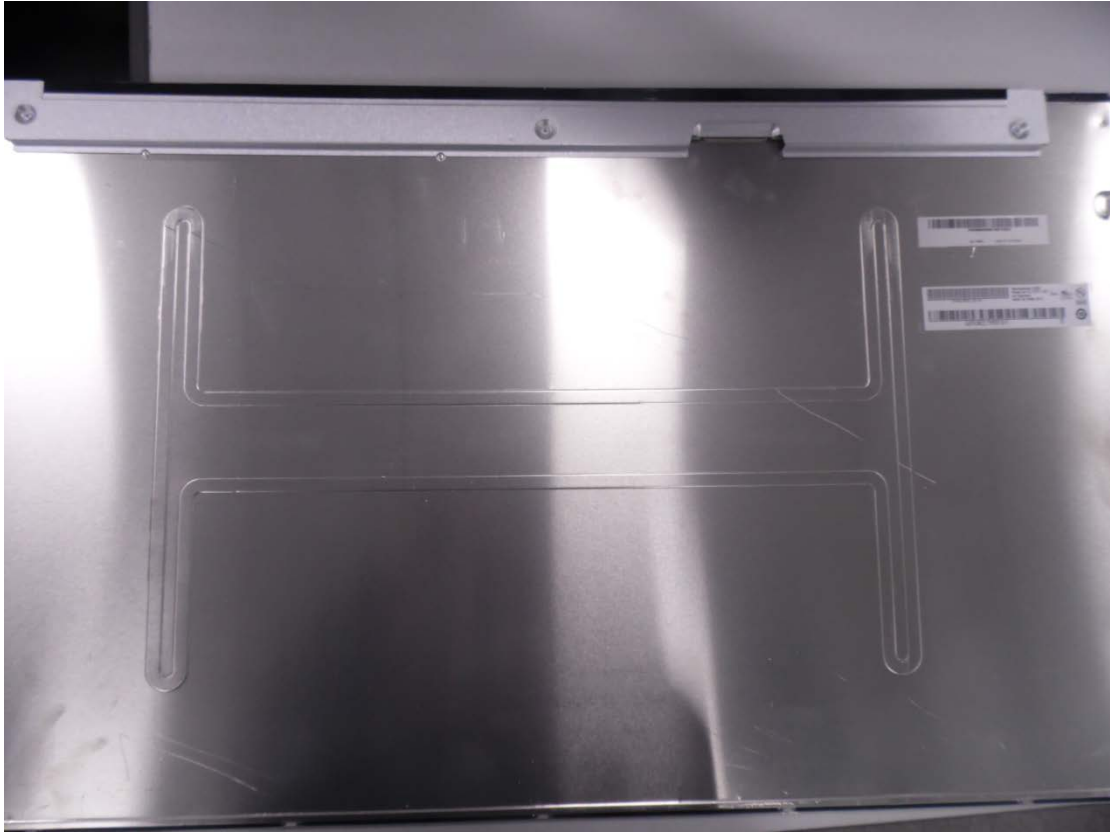
M270HGE-L30 rear view



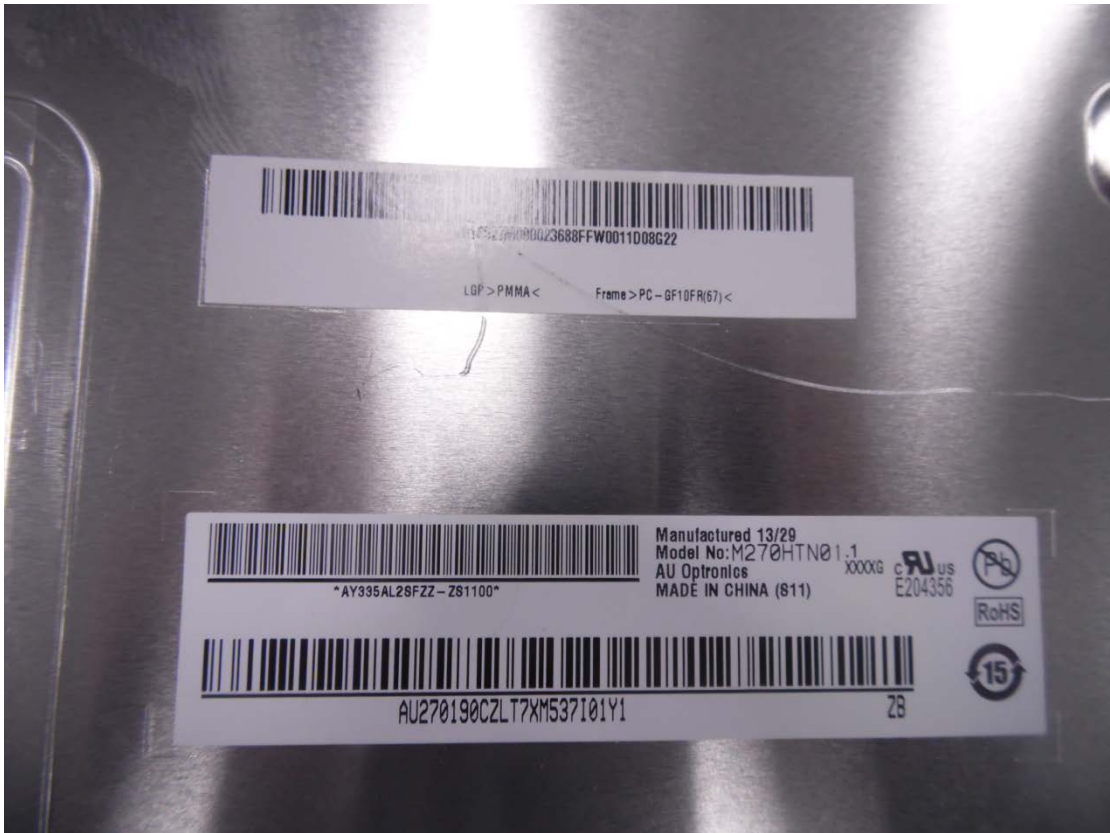
M270HGE-L30 rear view



M270HTN01.1 front view



M270HTN01.1 rear view



M270HTN01.1 rear view