

Request for class II permissive change

FCC ID:A3LLS24E390

Date:2016/6/14

TO: Federal Communication Commission

Please be notified that we, the undersigned, **Samsung Electronics Co., Ltd.** declare that the reasons for this Class II permissive change are as bellow:

1:Change to use new adaptor and new panel

Please refer to the below form for detailed information:

Item	Change information		Remark
	Before	After	
Adaptor	A2514_FPN	A2514_KSM	Change adaptor from the basic model
panel	MJ236BNLV1	CY-MJ236BNEV1	Change panel from the basic model

Only the adaptor and panel are different, other components are same.

Thank you!



Peter Ra, Manager
Samsung Electronics Co., Ltd.

The photos



Before change
MJ236BNLV1 front view



Before change
MJ236BNLV1 rear view



Before change
MJ236BNLV1 rear view



Back change
CY-MJ236BNEV1 front view



Back change
CY-MJ236BNEV1 rear view



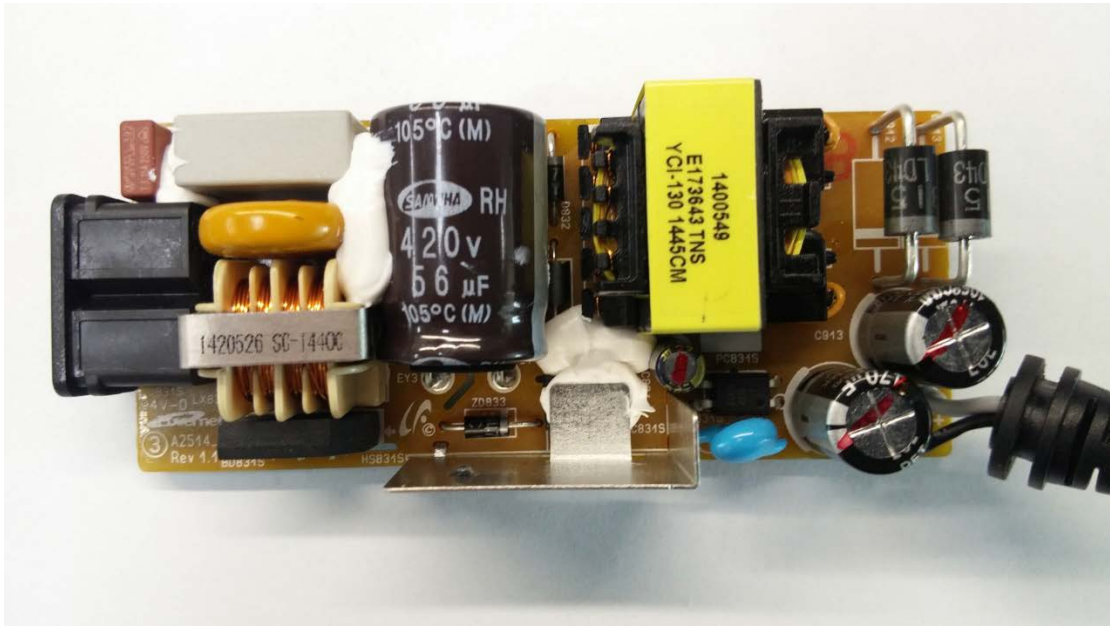
Back change
CY-MJ236BNEV1 rear view



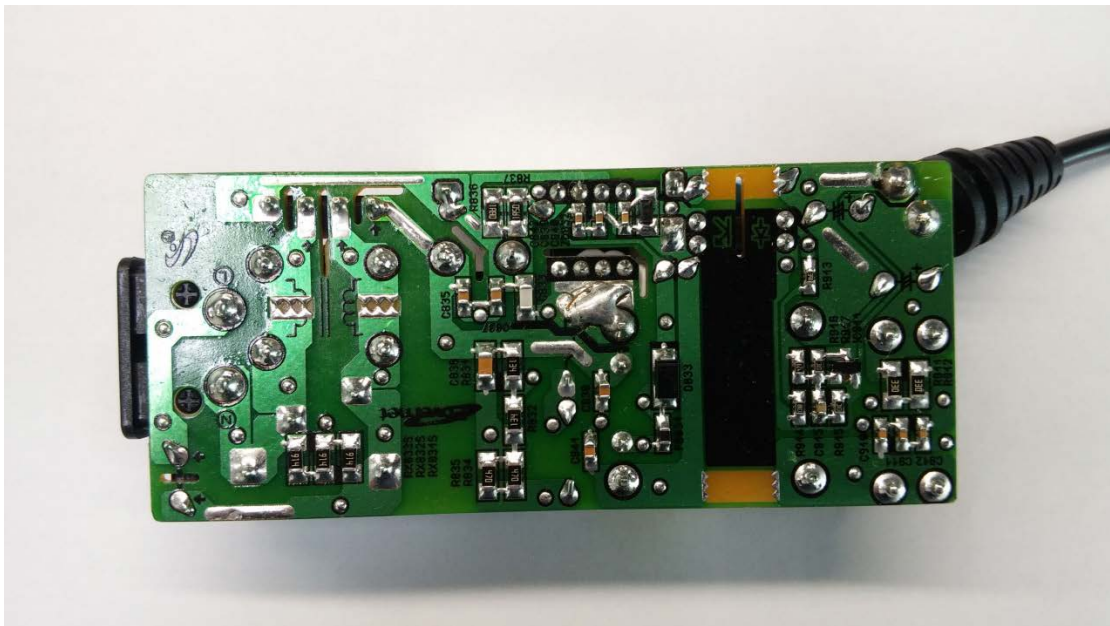
Before change
A2514_FPN external rear view



Before change
A2514_FPN internal front view



Before change
A2514_FPN internal rear view



Before change
A2514_FPN external front view



Back change
A2514_KSM external front view



Back change
A2514_KSM external rear view



Back change
A2514_KSM internal front view



Back change
A2514_KSM internal rear view