




EMC TEST REPORT

Project No.	LBE20146303	Revision No.	None
FCC ID	A3LLS22E310		
Applicant	Name of organization	Samsung Electronics Co., Ltd.	
	Address	19 Chapin Rd. Building D Pine Brook NJ 07058	
	Date of application	2014.12.20	
EUT Equipment Under Test	Type of device	Class B personal computers and peripherals	
	Equipment authorization	<input type="checkbox"/> Declaration of Conformity <input checked="" type="checkbox"/> Certification <input type="checkbox"/> Verification	
	Kind of product	LCD MONITOR	
	Model No.	LS22E31* (The character "*" may be 0-9,A-Z or blank ,it means different color)	
		Variant Model No.	-
Manufacturer	Samsung Electronics Co.,Ltd 129,Samsung-ro,Yeongtong-gu,Suwon-si, Gyeonggi-do,443-742, Rep. of Korea		
Applied Standards	FCC Part 15, Subpart B class B		
	ANSI C63.4-2009		
Test period	2014.12.25		
Issue date	2014.12.31		
Test result : Complied			
The equipment under test has found to be compliant with the applied standards. (Refer to the attached test result for more detail.)			
Tested by : Yamin Liu 		Reviewed by : Zhongyuan Gao 	
The test results in this report only apply to the tested sample. This report must not be reproduced, except in full, without written permission from CSQAL			
 TSEC Wei 4 Road, Microelectronics Industrial Park, Jingang High way, Tianjin, China Tel: 86 22 23961234, Fax: 86 22 23961234-5214			

According to Sec. 2.1077, 47 CFR of the FCC Rules.

This device complies with Part 15 of the FCC Rules. Operation is subject to the following two conditions: (1) This device may not cause harmful interference, and (2) This device must accept any interference received, including interference that may cause undesired operation.

Equipment EUT Type	Class B personal computers and peripherals
Kind of product	LCD Monitor
Trade Name	Samsung Electronics
Model	LS22E31* (The character "*" may be 0-9,A-Z or blank ,it means different color)
Applied Rules	FCC Part 15, Subpart B Class B
	ANSI C63.4-2009
Manufacturer	Samsung Electronics Co.,Ltd 129,Samsung-ro,Yeongtong-gu,Suwon-si, Gyeonggi-do,443-742, Rep. of Korea

We hereby *declare that* the equipment bearing the trade name and model number specified above was tested conforming to the applicable FCC Rules under the most accurate measurement standards possible, and that all the necessary steps have been taken and are in force to assure that production units of the same equipment will continue to comply with the Commission's requirements.


U.S. RESPONSIBLE PARTY	Samsung Electronics America QA Lab 19 Chapin Rd. Building D Pine Brook NJ 07058
CONTACT PERSON	 <u>Mr. Chan-ho Youn, Manager</u> E-Mail : jjano.youn@samsung.com Tel : 1-973-808-6362 Fax : 1-973-808-6361



Table of contents

1. Summary of test results

1.1 Emission

2. General Information

2.1 Test facility

3. Test configuration

3.1 Test Peripherals

3.2 EUT operating mode

3.3 Details of Sampling

3.4 Used cable description

3.5 EUT Description

3.6 Description of the EUT exercising method

3.7 Measurement uncertainty

4. Result of individual tests

4.1 Conducted disturbance

4.2 Radiated disturbance

Appendix – EUT photography

1. Summary of test results

The EUT has been tested according to the following specifications:

Applied	Test type	Applied standard	Result	Remarks
<input checked="" type="checkbox"/>	Conducted Disturbance	FCC Part 15 Subpart B	Complied	Meets Class B Limit
<input checked="" type="checkbox"/>	Radiated Disturbance	ANSI C63.4-2009	Complied	Meets Class B Limit

- Note : These results are deemed satisfactory evidence of compliance with ICES-003 of the Canadian Interference-Causing Equipment Regulations.

2. General Information

2.1 Test facility

The following firm has submitted the information required by Section 2.948 of the FCC Rules for measuring devices subject to Certification under Parts 15 & 18. The FCC takes no responsibility regarding the capability of this firm for performing the required measurements. Accordingly, this firm should not advertise or otherwise imply FCC approval of CSQAL.

CHINA SAMSUNG QUALITY ASSURANCE LABORATORY is LOCATED ON Block D, 17 - 19, Wei 4 Road, Microelectronics Industrial Park, Jingang Highway, Tianjin China.

Registration Number: 745769

E-mail Address: zhongyuan.gao@samsung.com

Phone Number:86-22-2396-1234-5211

All testing are performed in Semi-anechoic chambers conforming to the site attenuation Characteristics defined by ANSI C63.4, CISPR 22, 16-1 and 16-2 and Shielded rooms.

CSQAL is operated as testing laboratory in accordance with the requirements of ISO/IEC 17025:2005.

3. Test Setup configuration

3.1 Test Peripherals

The peripherals which were interconnected to the EUT during the test are as follows:

Item	Model No.	Serial No.	Manufacturer	Note
LCD Monitor	LS22E31*	-	Samsung	EUT
Adapter	A2514_FPN	CN07BN4400797ASK28FBJE164	Powernet	EUT
PC	DM-V200-PA15	ZLPZ9WAZ600123A	Samsung	-
Printer	CLP-315	Z0CEBAZZ500252J	Samsung	-
USB Keyboard	SK-8185	OY526K	Dell	-
USB Mouse	MOC5UO	J0G00G9L	Dell	-

3.2 EUT operating mode(s)

To achieve compliance applied standard specification, the following mode(s) were made during compliance testing:

Operating Mode 1	VGA IN
Operating Mode 2	HDMI IN

3.3 Details of Sampling

Customer selected, single unit.

3.4 Cable description

The type(s) of cables which were connected to the ports (of the EUT) are as follows:

No	Connect Cable	Length [m]	Ferrite core [Y/N]	Remark
1	VGA in	1.5	Y	To PC
2	HDMI in	1.5	Y	To PC
3	POWER	1.8	N	FOR EUT

3.5 EUT Description

The following features describe EUT represented by this report:

Test model: LS22E310H

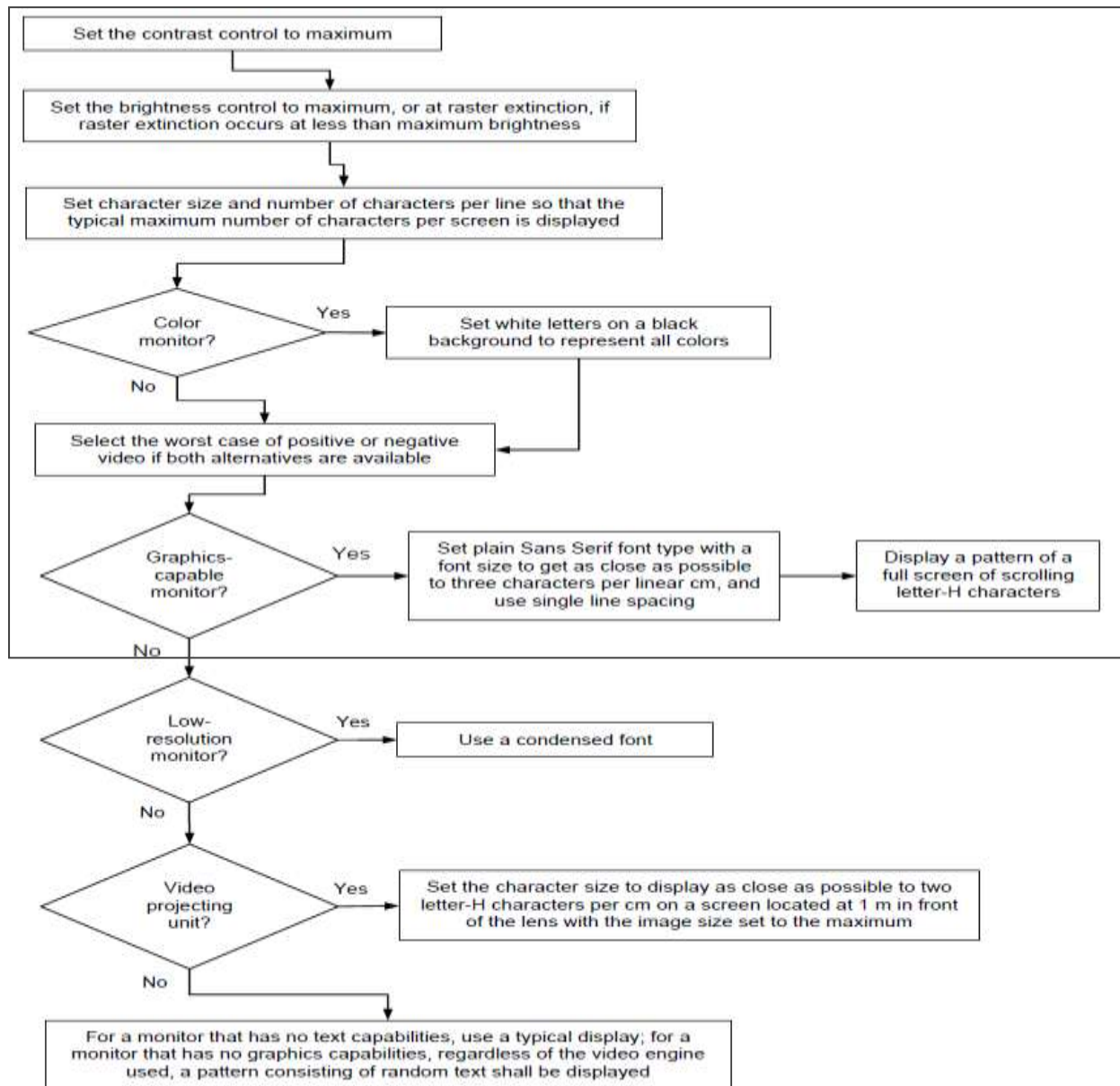
Test Voltage:110V 60Hz

Model Name		S22E310HY / S22E310H
Panel	Size	21.5 Inches (54 cm)
	Display area	476.64 mm (H) x 268.11 mm (V) 18.8 Inches (H) x 10.6 Inches (V)
	Pixel Pitch	0.24825 mm (H) x 0.24825 mm (V) 0.009774 Inches (H) x 0.009774 Inches (V)
Power Supply		AC 100 - 240 V - (+/- 10%), 50/60 Hz ± 3 Hz Refer to the label at the back of the product as the standard voltage can vary in different countries.
Dimensions (W x H x D) / Weight	Without Stand	513.7 x 308.6 x 90.4 mm 20.2 x 12.1 x 3.6 Inches
	With Stand	513.7 x 390.5 x 189.7 mm / 3.00 Kg 20.2 x 15.4 x 7.5 Inches / 6.6 lbs
VESA Mounting Interface		75 x 75 mm 3.0 x 3.0 Inches (For use with Specialty(Arm) Mounting hardware.)
Environmental considerations	Operating	Temperature : 50°F – 104°F (10°C – 40°C) Humidity : 10% – 80%, non-condensing
	Storage	Temperature : -4°F – 113°F (-20°C – 45°C) Humidity : 5% – 95%, non-condensing

3.6 Description of the EUT exercising method

The EUT exercise program used during EMI testing was CSQAL standardized test program for MS Windows. The program repetitively sends a screen of H – Character to the display. Connect video output of computer on EUT's PC IN (D-sub), HDMI IN , and scrolled H – character continuously on EUT's screen.

The EUT system includes a monitor, the operational conditions shown as follows, within the selected area.



- Notes:**
1. Set the brightness control to maximum
 2. Set the contrast control to maximum
 3. Display a pattern of a full screen of scrolling letter-H characters with a font size to get as close as possible to three characters per linear cm and use single line spacing

3.7 Measurement uncertainty

Where relevant, the following measurement uncertainty levels have been estimated for tests performed on the apparatus: (According to CISPR 16-4 and UKAS Lab 34.)

Test type			Measurement uncertainty (C.L. 95 %, k = 2)
Disturbance voltage at the mains terminals			3.0 dB
Radiated Disturbance	Horizontal	30 MHz - 1 GHz	4.4 dB
	Vertical	30 MHz - 1 GHz	4.4 dB
	Horizontal	1GHz - 6 GHz	3.7 dB
	Vertical	1GHz - 6 GHz	3.7 dB

4. Results of individual test

4.1 Conducted disturbance

Both conducted lines are measured in Quasi-Peak and Average mode, including the worst-case data points for each tested configuration.

The EUT measured in accordance with the methods described in standards.

Limits for conducted disturbance at the mains ports of class B ITE

Frequency range Limits MHz	Limits dB(μ V)	
	Quasi-peak	Average
0,15 to 0,50	66 to 56	56 to 46
0,50 to 5	56	46
5 to 30	60	50

Note 1: 1 μ V is regarded as 0 dB.
 Note 2: The limits shall decrease linearly with the logarithm of the frequency in the range 150 – 500 kHz.
 Note 3: If the average limit is met in the measurement with quasi-peak detector, the measurement with average detector is unnecessary.
 Note 4: The lower limit shall apply at the transition frequency.

If the reading on the measuring receiver shows fluctuations close to the limit, the reading shall be observed for at least 15 seconds at each measurement frequency, the highest reading shall be recorded, with the exception of any brief isolated high reading (which shall be ignored).

4.1.1 Test instrumentation

Test instrumentation used in the Conducted disturbance test was as follows:

Test instrumentation	Model name	Manufacturer	Serial or Firmware (No./Ver.)	Calibration	
				Date	Interval (Month)
Test Software	EP5CE	TOYO	V 4.7.10	N/A	N/A
Measuring receiver	ESCI	R&S	101027	2014.03.02	12
Artificial mains network	ENV216	R&S	101123	2014.08.18	12
Artificial mains network	ENV216	R&S	101059	2014.08.18	12

4.1.2 Photograph of the test Configuration

(Front)



(Rear)





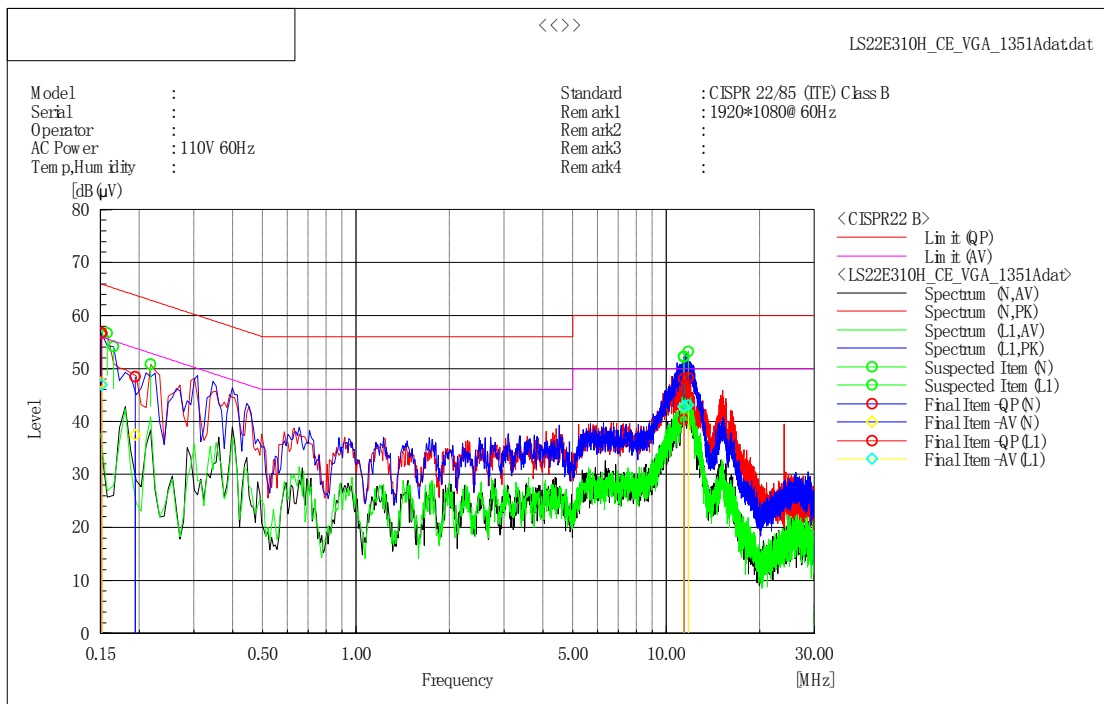
4.1.3 Test results

Test date	2014.12.25		Test engineer		Yamin Liu	
Climate condition	Ambient temperature	20±1 °C	Relative humidity	36±1 %	Atmospheric pressure	101±0 kPa
	Test place	Shielded Room #2				

4.1.4 Test data

■ Operating Mode: D-Sub (PC Video IN or Analog) IN Display

Set the brightness control to maximum, Set the contrast control to maximum
 Scan three resolutions (800*600@60Hz, 1680*1050@60Hz, 1920*1080@60Hz), then choose the worst one (1920*1080@60Hz) for final evaluation.



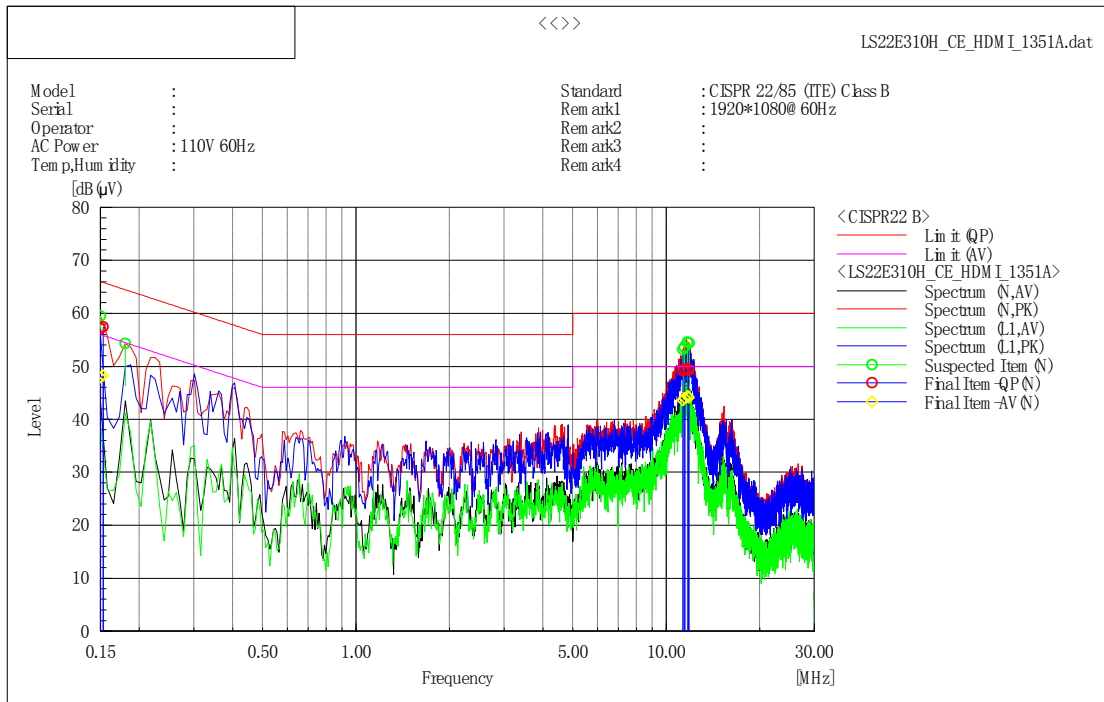
Final Result

--- N Phase ---											
No.	Frequency	Reading QP	Reading AV	c. f	Result QP	Result AV	Limit QP	Limit AV	Margin QP	Margin AV	Remark
	[MHz]	[dB (µ V)]	[dB (µ V)]	[dB]	[dB (µ V)]	[dB (µ V)]	[dB (µ V)]	[dB (µ V)]	[dB (µ V)]	[dB]	[dB]
1	11.4072	38.1	32.7	10.0	48.1	42.7	60.0	50.0	11.9	7.3	
2	0.15122	46.7	37.3	10.0	56.7	47.3	65.9	55.9	9.2	8.6	
3	0.19411	38.4	27.5	10.0	48.4	37.5	63.9	53.9	15.5	16.4	

--- L1 Phase ---											
No.	Frequency	Reading QP	Reading AV	c. f	Result QP	Result AV	Limit QP	Limit AV	Margin QP	Margin AV	Remark
	[MHz]	[dB (µ V)]	[dB (µ V)]	[dB]	[dB (µ V)]	[dB (µ V)]	[dB (µ V)]	[dB (µ V)]	[dB (µ V)]	[dB]	[dB]
1	11.77379	38.2	33.0	10.0	48.2	43.0	60.0	50.0	11.8	7.0	
2	11.39785	30.4	32.9	10.0	40.4	42.9	60.0	50.0	19.6	7.1	
3	0.15169	46.7	36.9	10.0	56.7	46.9	65.9	55.9	9.2	9.0	

Operating Mode: HDMI IN Display

Set the brightness control to maximum, Set the contrast control to maximum
 Scan three resolutions (800*600@60Hz, 1680*1050@60Hz, 1920*1080@60Hz), then
 choose the worst one (1920*1080@60Hz) for final evaluation.



Final Result

No.	Frequency [MHz]	Reading		c. f [dB]	Result		Limit		Margin		Remark
		QP [dB (µV)]	AV [dB (µV)]		QP [dB (µV)]	AV [dB (µV)]	QP [dB (µV)]	AV [dB (µV)]	QP [dB]	AV [dB]	
1	11.72575	39.5	34.3	10.0	49.5	44.3	60.0	50.0	10.5	5.7	
2	11.82114	39.3	34.1	10.0	49.3	44.1	60.0	50.0	10.7	5.9	
3	11.44937	39.5	34.0	10.0	49.5	44.0	60.0	50.0	10.5	6.0	
4	11.31117	39.2	33.6	10.0	49.2	43.6	60.0	50.0	10.8	6.4	
5	0.15294	47.5	38.3	10.0	57.5	48.3	65.8	55.8	8.3	7.5	
6	0.15011	47.1	38.0	10.0	57.1	48.0	66.0	56.0	8.9	8.0	

Note) Level (Quasi-Peak and/or Average) = Meter Reading (Quasi-Peak and/or Average) + Factor (LISN Insertion Loss + Cable Loss)

Margin = Limit – Level (Quasi-Peak and/or Average)

4.2 Radiated disturbance

Of those disturbances above ($L - 20\text{dB}$), where L is the limit level in logarithmic units, record at least the disturbance levels and the frequencies of the six highest disturbances.

The following data lists the significant emission frequencies, measured levels, correction factors (for antenna and cables), orientation of table, polarization and height of antenna, the corrected reading, the limit, and the amount of margin. All measurements were taken utilizing quasi-peak detection unless stated otherwise.

Measurements were performed at an antenna to EUT distance of 3 meters and elevated between 1 and 4 meters. Both vertical and horizontal antenna polarizations were measured.

Above 1GHz, peak detector function mode was used with resolution bandwidth of 1 MHz and a video bandwidth of 1 MHz. If the peak measured value complies with the average limit, it is unnecessary to perform an average measurement.

Except for Class A digital devices, the field strength of radiated emissions from unintentional radiators at a distance of 3 meters shall not exceed the following values:

Frequency range Limits MHz	Quasi-peak Limits (microvolts/meter)
	Class B
30 to 88	100
88 to 216	150
216 to 960	200
Above 960	500

Note 1: The lower limit shall apply at the transition frequency.
 Note 2: Additional provisions may be required for cases where interference occurs.
 Note 3: 1 $\mu\text{V}/\text{m}$ is regarded as 0 dB.

Measurements above 1GHz were performed at an antenna to EUT distance of 3 meters and elevated 1 to 4 meters in FAC. Both vertical and horizontal antenna polarizations were measured.

The test is performed in a semi-anechoic chamber, use of absorbing material to cover part of the metal ground plane, the dimension of the absorbing material is: 3 x 3 x 0.3 m (W x D x H)

Limits for radiated disturbance of ITE at a measuring distance of 3 m

Frequency range Limits MHz	Class A		Class B	
	Peak dB($\mu\text{V}/\text{m}$)	Average dB($\mu\text{V}/\text{m}$)	Peak dB($\mu\text{V}/\text{m}$)	Average dB($\mu\text{V}/\text{m}$)
1000 to 3000	76	56	70	50
3000 to 6000	80	60	74	54

Note 1: The lower limit shall apply at the transition frequency.

4.2.1 Test instrumentation

Test instrumentation used in the Radiated disturbance was as follows:

30MHz~1GHz

Test instrumentation	Model name	Manufacturer	Serial or Firmware (No./Ver.)	Calibration	
				Date	Interval (Month)
Test Software	EP5/RE	TOYO	V 4.7.10	N/A	N/A
Bi-con Antenna	CBL6112D	SCHAFFNER	30998	2013.04.03	24
EMI Receiver	ESCI	R&S	101026	2014.03.02	12
AMPLIFIER	310N	SONOMA	300911	2014.07.05	12
Ant Mast	MA4000	INN CO	-	N/A	N/A
Mast Controller	CO2000	INN CO	-	N/A	N/A
RF Selector	NS4900N	TOYO	-	N/A	N/A

1GHz-2GHz

Test instrumentation	Model name	Manufacturer	Serial or Firmware (No./Ver.)	Calibration	
				Date	Interval (Month)
Test Software	e3	AUDIX	6.110709d	N/A	N/A
Broad-Band Horn Antenna	BBHA9120B	Schwarzbeck	520	2014.02.19	24
EMI Receiver	ESU26	R&S	100243	2014.03.02	12
AMPLIFIER	AMF-4D-00500800-18-13P	TOYO	0934	2014.07.05	12
Ant Mast	AUDIX	AUDIX	-	N/A	N/A

4.2.2 Photograph of the test Configuration

30MHz~1GHz

(Front)



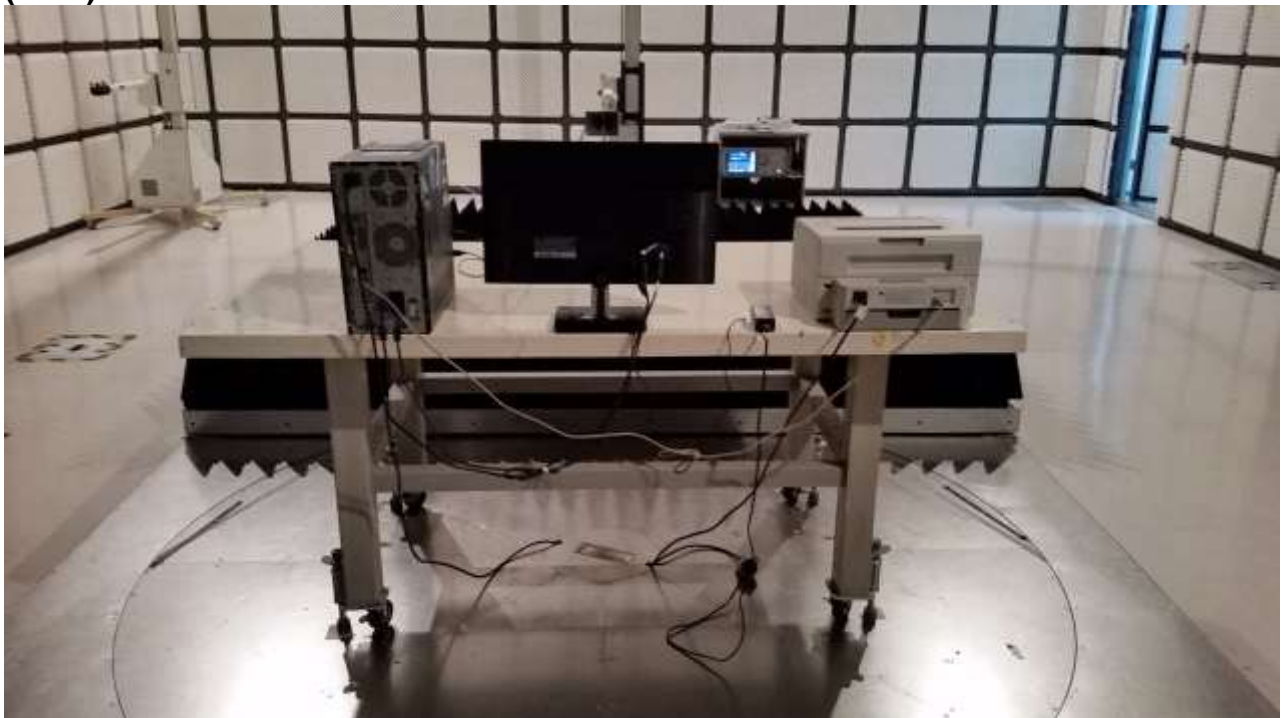
(Rear)



**1GHz-2GHz
(Front)**



(Rear)



4.2.3 Test results

30MHz~1GHz

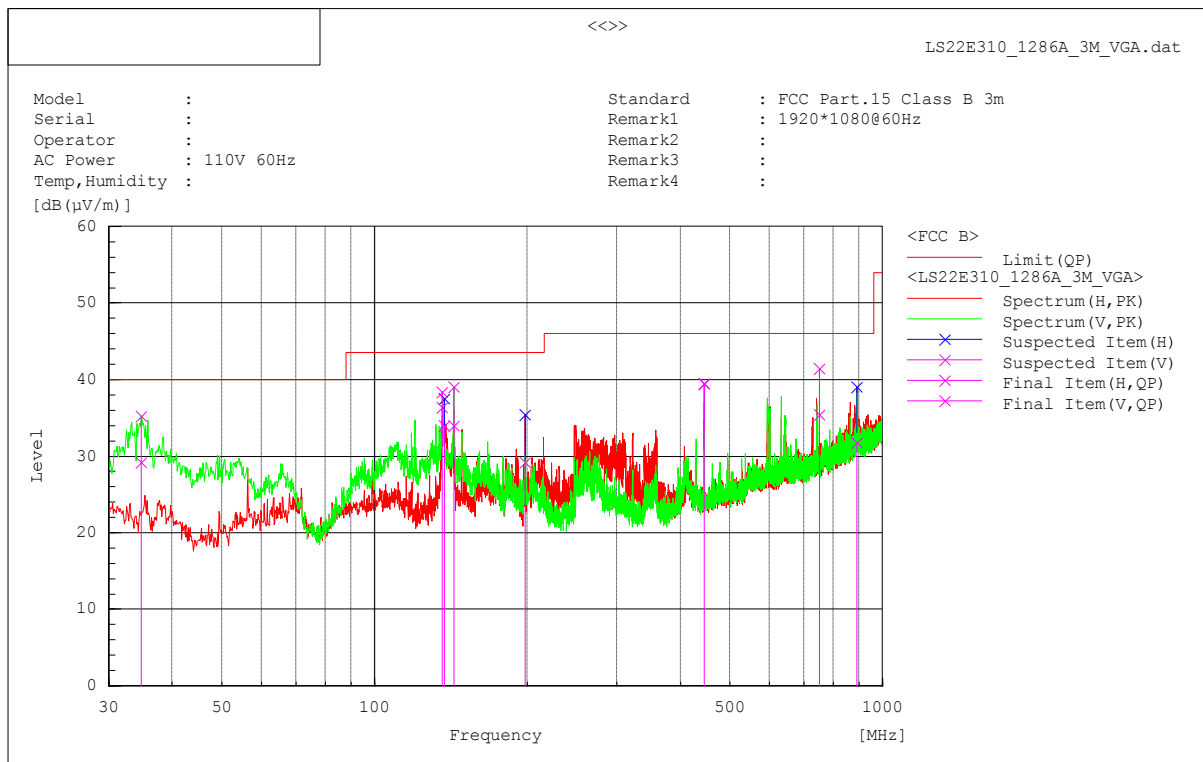
Test date	2014.12.25		Test engineer		Yamin Liu	
Climate condition	Ambient temperature	20±1℃	Relative humidity	36±1 %	Atmospheric pressure	101±0 kPa
	Test place					
3m Semi-Anechoic Chamber						

■ Operating Mode: D-Sub (PC Video IN or Analog) IN Display

Set the brightness control to maximum

Set the contrast control to maximum

Scan three resolutions (800*600@60Hz, 1680*1050@60Hz, 1920*1080@60Hz), then choose the worst one (1920*1080@60Hz) for final evaluation.



Final Result

No.	Frequency [MHz]	(P)	Reading QP [dB(µV)]	c.f [dB(1/m)]	Result QP [dB(µV/m)]	Limit QP [dB(µV/m)]	Margin QP [dB]	Height [cm]	Angle [°]	Remark
1	445.524	V	43.2	-3.6	39.6	46.0	6.4	100.0	147.7	
2	135.973	V	47.5	-11.1	36.4	43.5	7.1	100.0	174.9	
3	137.064	H	45.1	-11.1	34.0	43.5	9.5	136.0	8.7	
4	143.126	V	45.6	-11.7	33.9	43.5	9.6	100.0	167.3	
5	750.104	V	34.3	1.1	35.4	46.0	10.6	100.0	1.1	
6	34.729	V	37.2	-8.0	29.2	40.0	10.8	100.0	84.9	
7	891.481	H	28.4	3.4	31.8	46.0	14.2	100.0	157.0	
8	197.931	H	42.1	-12.9	29.2	43.5	14.3	100.0	101.6	

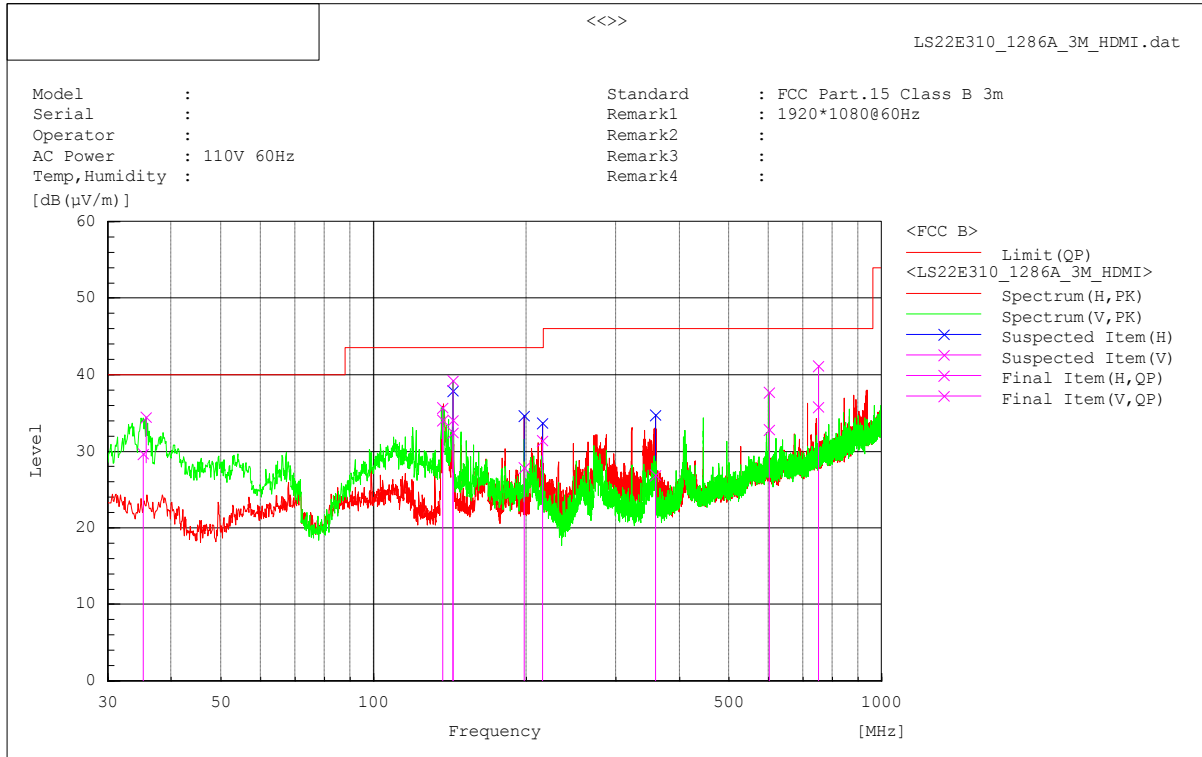


■ Operating Mode: HDMI IN Display

Set the brightness control to maximum

Set the contrast control to maximum

Scan three resolutions (800*600@60Hz, 1680*1050@60Hz, 1920*1080@60Hz), then choose the worst one (1920*1080@60Hz) for final evaluation.



Final Result

No.	Frequency [MHz]	(P)	Reading QP [dB (µV)]	c.f [dB (1/m)]	Result QP [dB (µV/m)]	Limit QP [dB (µV/m)]	Margin QP [dB]	Height [cm]	Angle [°]	Remark
1	143.126	V	45.8	-11.7	34.1	43.5	9.4	100.0	179.2	
2	136.943	V	45.2	-11.1	34.1	43.5	9.4	100.0	192.6	
3	750.104	V	34.7	1.1	35.8	46.0	10.2	100.0	12.6	
4	35.214	V	38.0	-8.3	29.7	40.0	10.3	100.0	48.0	
5	143.126	H	44.1	-11.7	32.4	43.5	11.1	139.0	33.5	
6	214.785	H	44.4	-13.0	31.4	43.5	12.1	100.0	346.2	
7	600.118	V	33.3	-0.5	32.8	46.0	13.2	100.0	338.0	
8	197.931	H	40.7	-12.9	27.8	43.5	15.7	241.0	321.8	
9	358.709	H	32.8	-5.9	26.9	46.0	19.1	100.0	30.1	

Note) Receiving antenna polarization : Horizontal and/or Vertical

Test Distance : 3m, Antenna Height : 1 to 4 meters

Result (Quasi-Peak) = Reading QP + C.F (Antenna Factor + Cable Loss - Amp. Gain)

Margin QP (Quasi-Peak) = Limit – Level QP



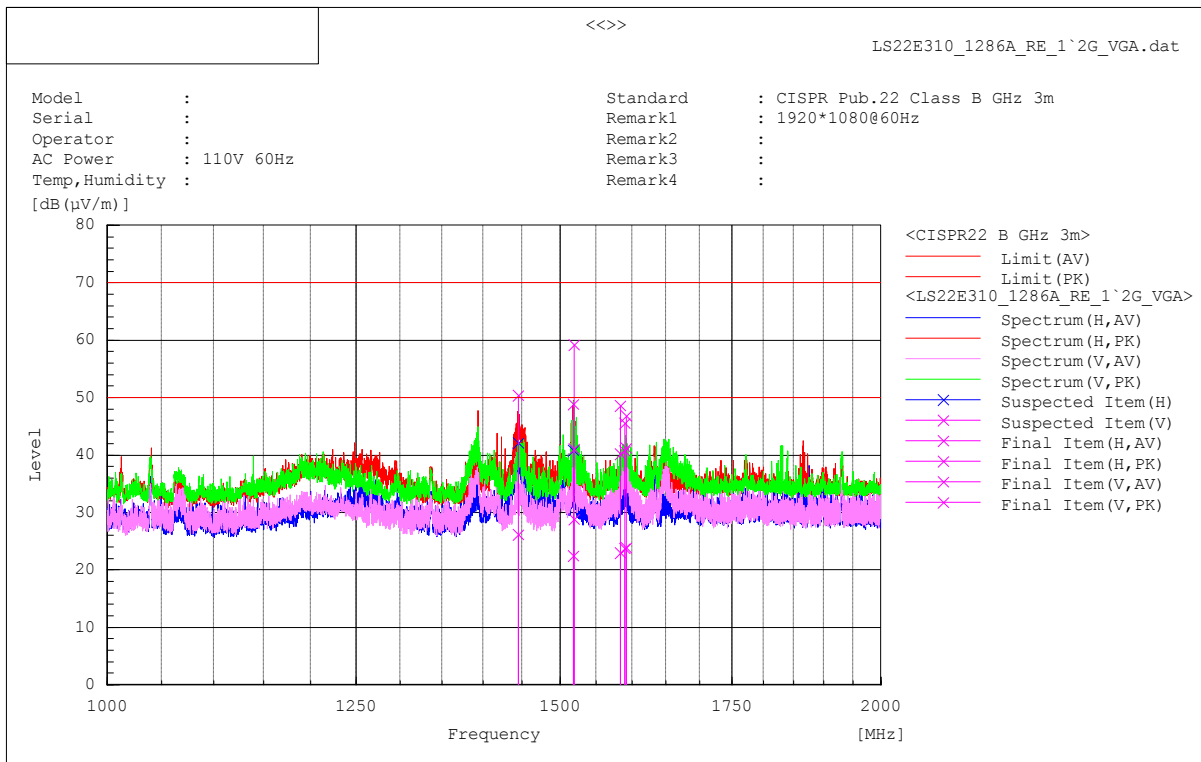
1GHz-2GHz

Test date	2014.12.25		Test engineer		Yamin Liu	
Climate condition	Ambient temperature	23 °C	Relative humidity	41 %	Atmospheric pressure	100.0 kPa
	Test place					
3m Semi-Anechoic Chamber						

■ Operating Mode: D-Sub (PC Video IN or Analog) IN Display

Set the brightness control to maximum, set the contrast control to maximum

Scan three resolutions (800*600@60Hz, 1680*1050@60Hz, 1920*1080@60Hz), then choose the worst one (1920*1080@60Hz) for final evaluation.



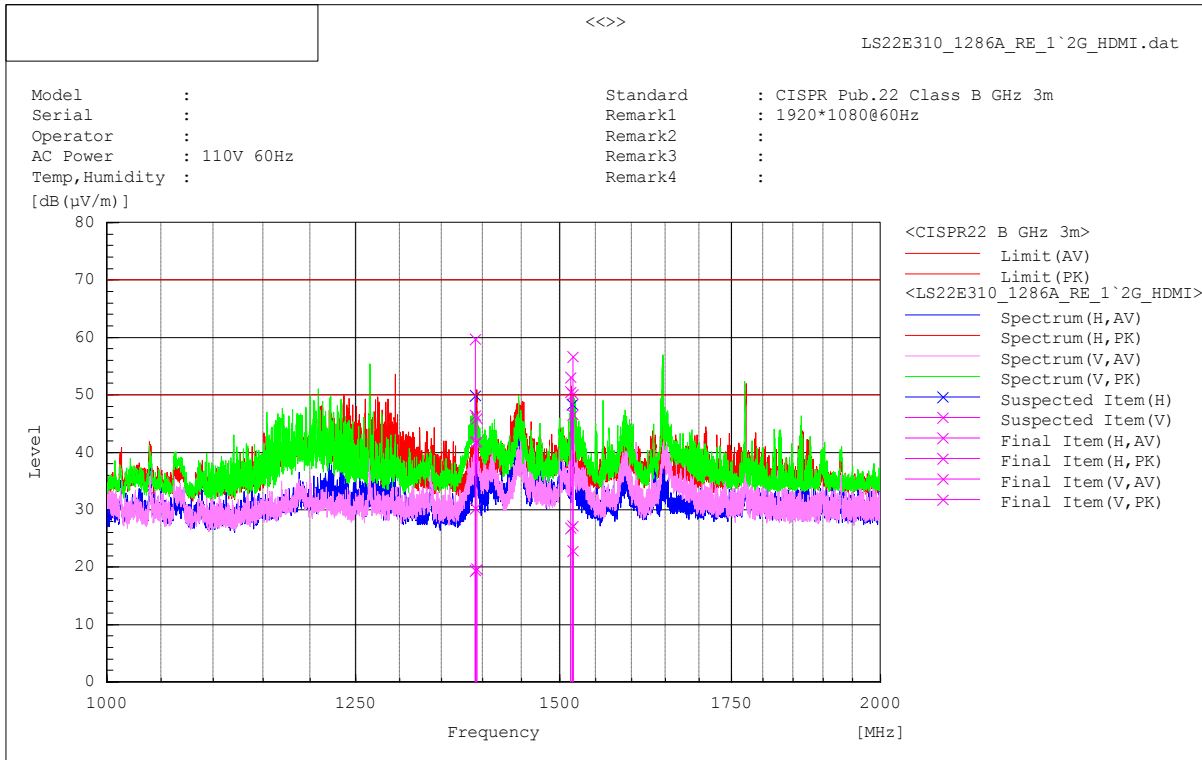
Final Result

No.	Frequency [MHz]	(P)	Reading AV [dB (µV)]	Reading PK [dB (µV)]	c.f [dB (1/m)]	Result AV [dB (µV/m)]	Result PK [dB (µV/m)]	Limit AV [dB (µV/m)]	Limit PK [dB (µV/m)]	Margin AV [dB]	Margin PK [dB]	Height [cm]	Angle [°]	Remark
1	1519.527	V	45.7	76.1	-16.9	28.8	59.2	50.0	70.0	21.2	10.8	245.0	26.0	
2	1445.021	H	43.5	67.8	-17.4	26.1	50.4	50.0	70.0	23.9	19.6	156.0	192.9	
3	1517.874	H	39.4	65.8	-16.9	22.5	48.9	50.0	70.0	27.5	21.1	157.0	184.2	
4	1583.637	V	38.8	64.4	-15.8	23.0	48.6	50.0	70.0	27.0	21.4	285.0	348.1	
5	1591.613	V	39.5	62.5	-15.7	23.8	46.8	50.0	70.0	26.2	23.2	314.0	348.5	
6	1589.882	V	39.5	61.4	-15.8	23.7	45.6	50.0	70.0	26.3	24.4	294.0	345.7	

■ Operating Mode: HDMI IN Display

Set the brightness control to maximum, set the contrast control to maximum

Scan three resolutions (800*600@60Hz, 1680*1050@60Hz, 1920*1080@60Hz), then choose the worst one (1920*1080@60Hz) for final evaluation.



Final Result

No.	Frequency [MHz]	(P)	Reading AV [dB (µV)]	Reading PK [dB (µV)]	c.f [dB (1/m)]	Result AV [dB (µV/m)]	Result PK [dB (µV/m)]	Limit AV [dB (µV/m)]	Limit PK [dB (µV/m)]	Margin AV [dB]	Margin PK [dB]	Height [cm]	Angle [°]	Remark
1	1391.384	H	47.9	77.4	-17.7	30.2	59.7	50.0	70.0	19.8	10.3	144.0	155.1	
2	1518.124	H	44.1	73.5	-16.9	27.2	56.6	50.0	70.0	22.8	13.4	214.0	251.1	
3	1515.279	V	43.6	69.9	-16.9	26.7	53.0	50.0	70.0	23.3	17.0	111.0	34.9	
4	1517.876	V	39.8	67.1	-16.9	22.9	50.2	50.0	70.0	27.1	19.8	316.0	319.7	
5	1392.886	V	37.2	59.4	-17.6	19.6	41.8	50.0	70.0	30.4	28.2	101.0	139.5	
6	1391.512	V	37.1	59.4	-17.7	19.4	41.7	50.0	70.0	30.6	28.3	101.0	138.9	

Note) Receiving antenna polarization : Horizontal, Vertical

Test Distance : 3m, Antenna Height : 1 to 4 meters

Result (Average) = Reading AV + C.F (Antenna Factor + Cable Loss - Amp. Gain)

Margin AV (Average) = Limit - Result AV

Appendix A – EUT photography
(Front)



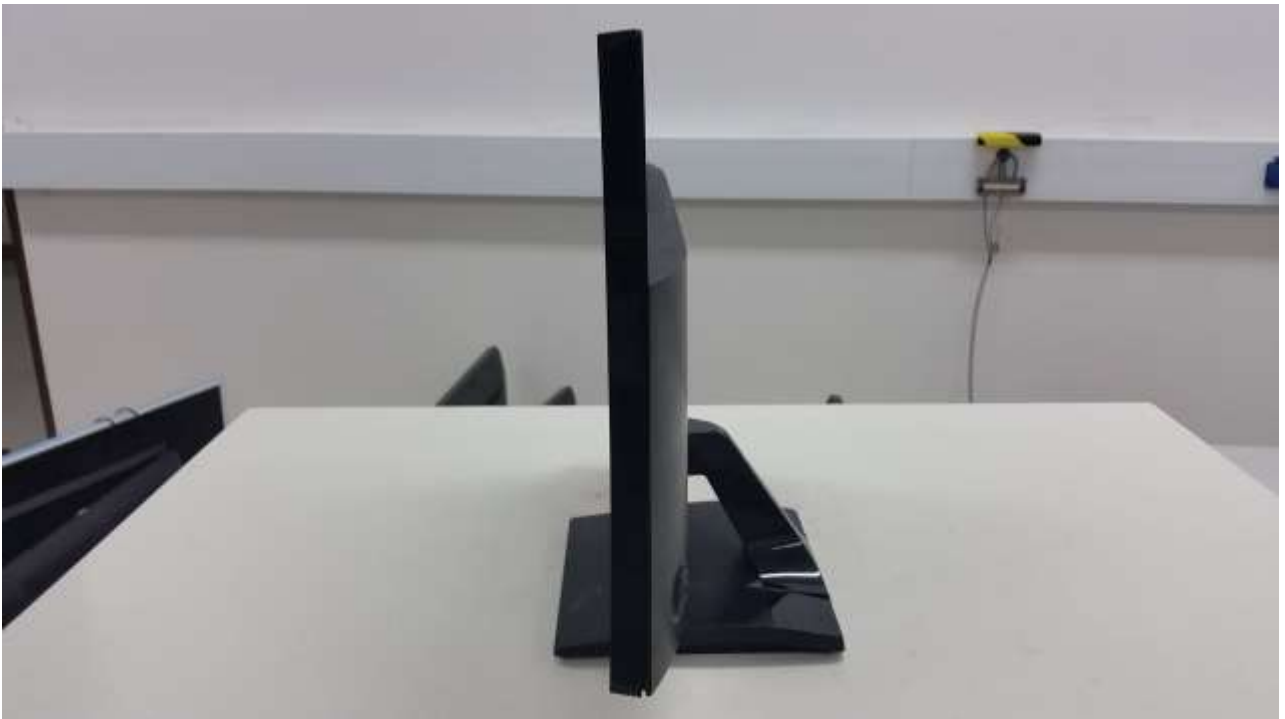
(Rear)



(Left)



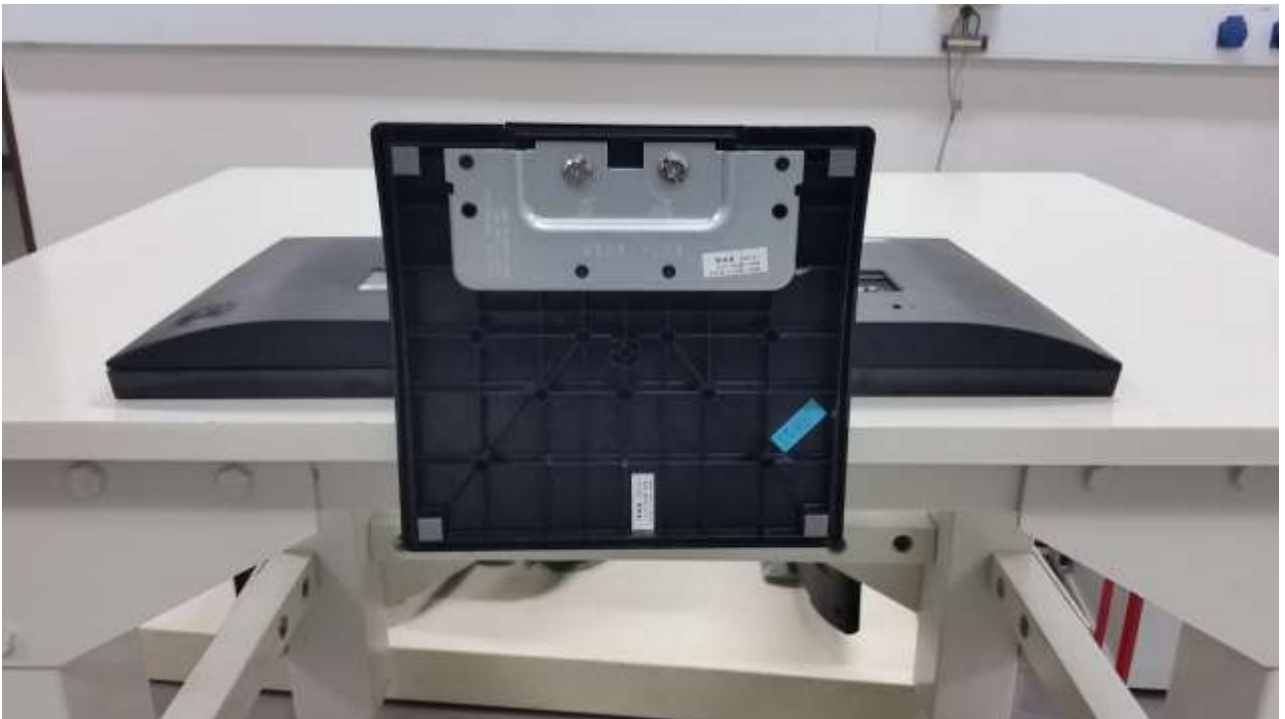
(Right)



(Top)



(Bottom)



(Panel)



(Main Board)



(Main Board)



(Crystal Main Board)



(Adapter)



(Adapter)

