

EMI 공03. f. 10. 10

Part No. 98E7655

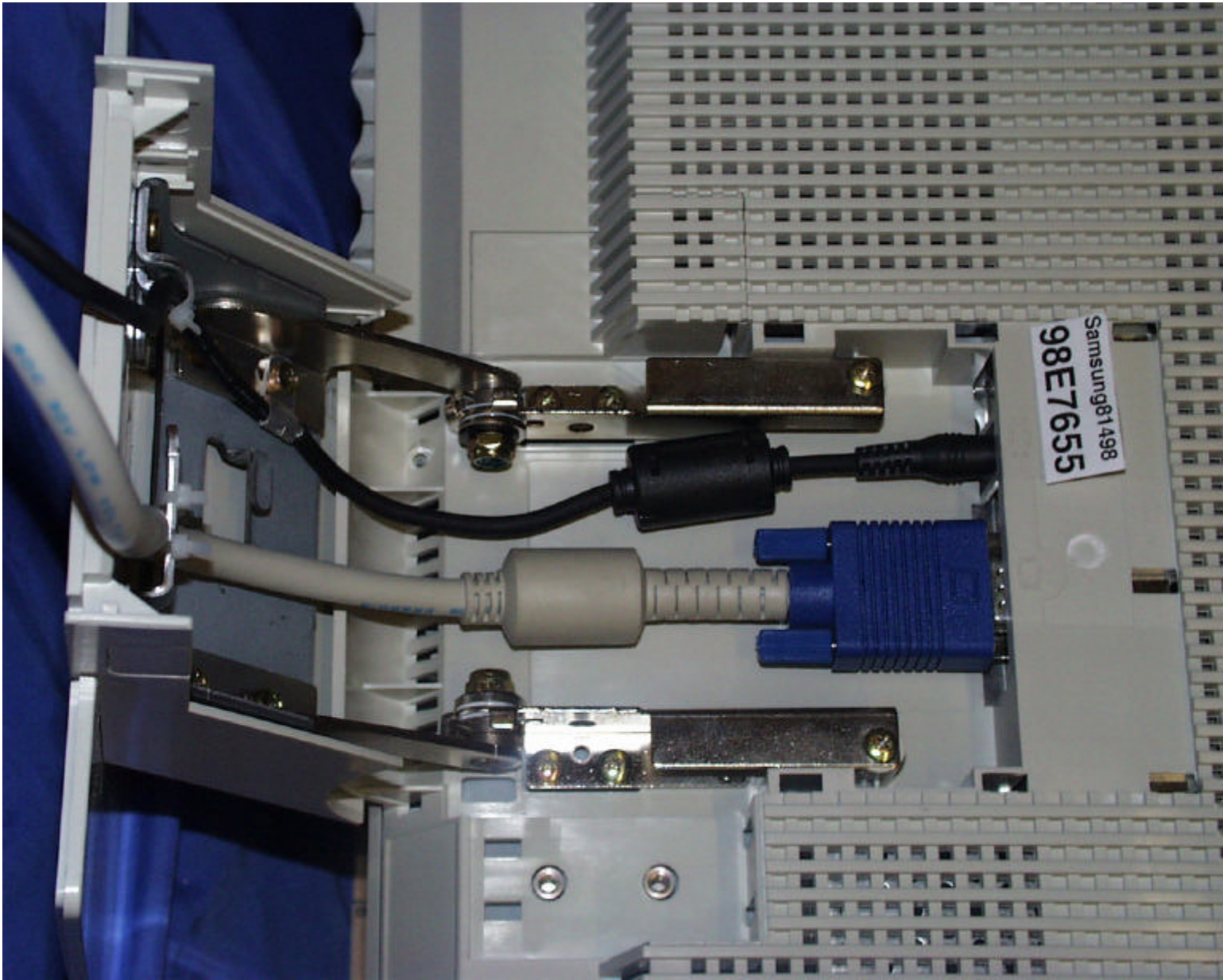
Part No. 98E7655

Samsung 1498  
98E7655

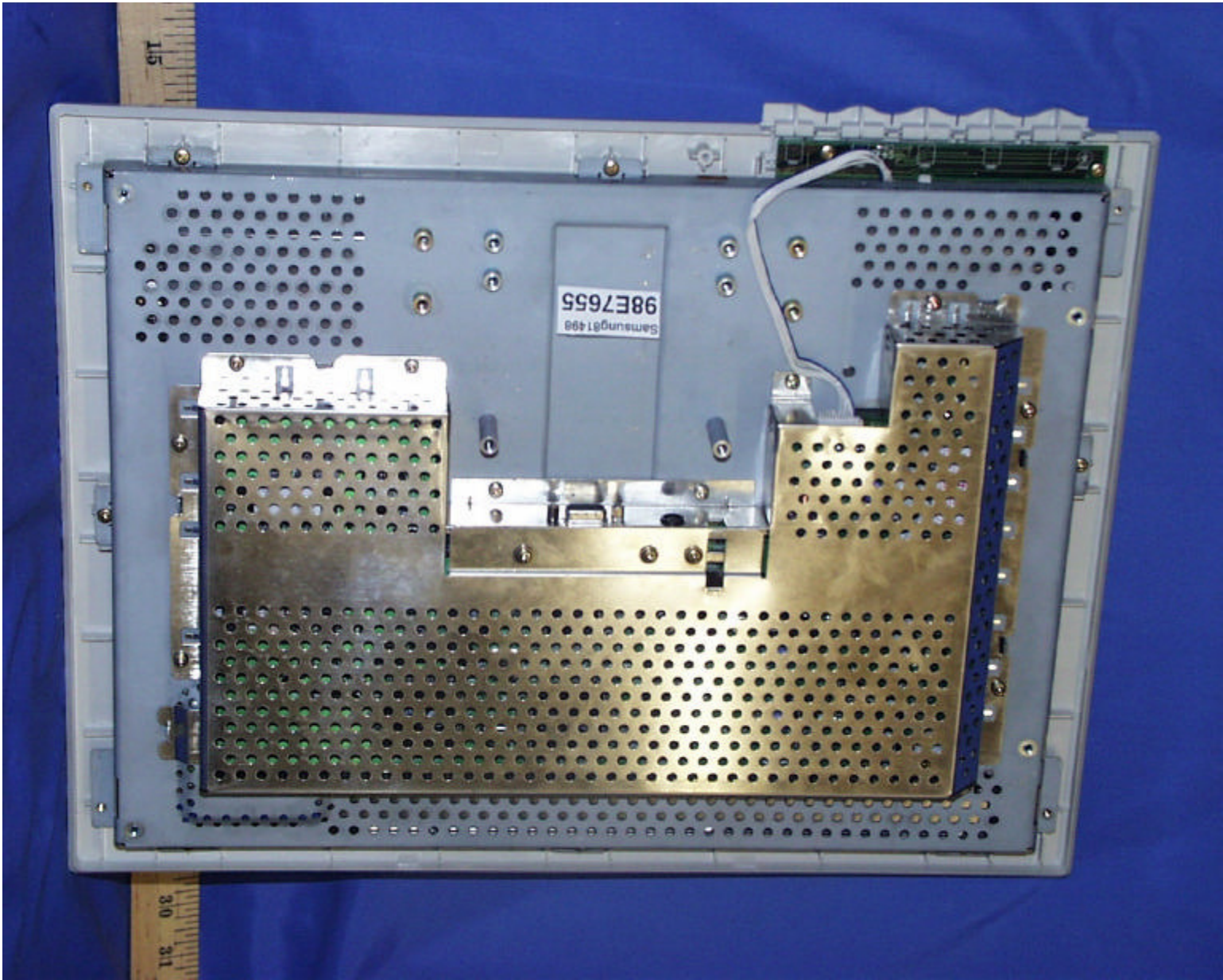


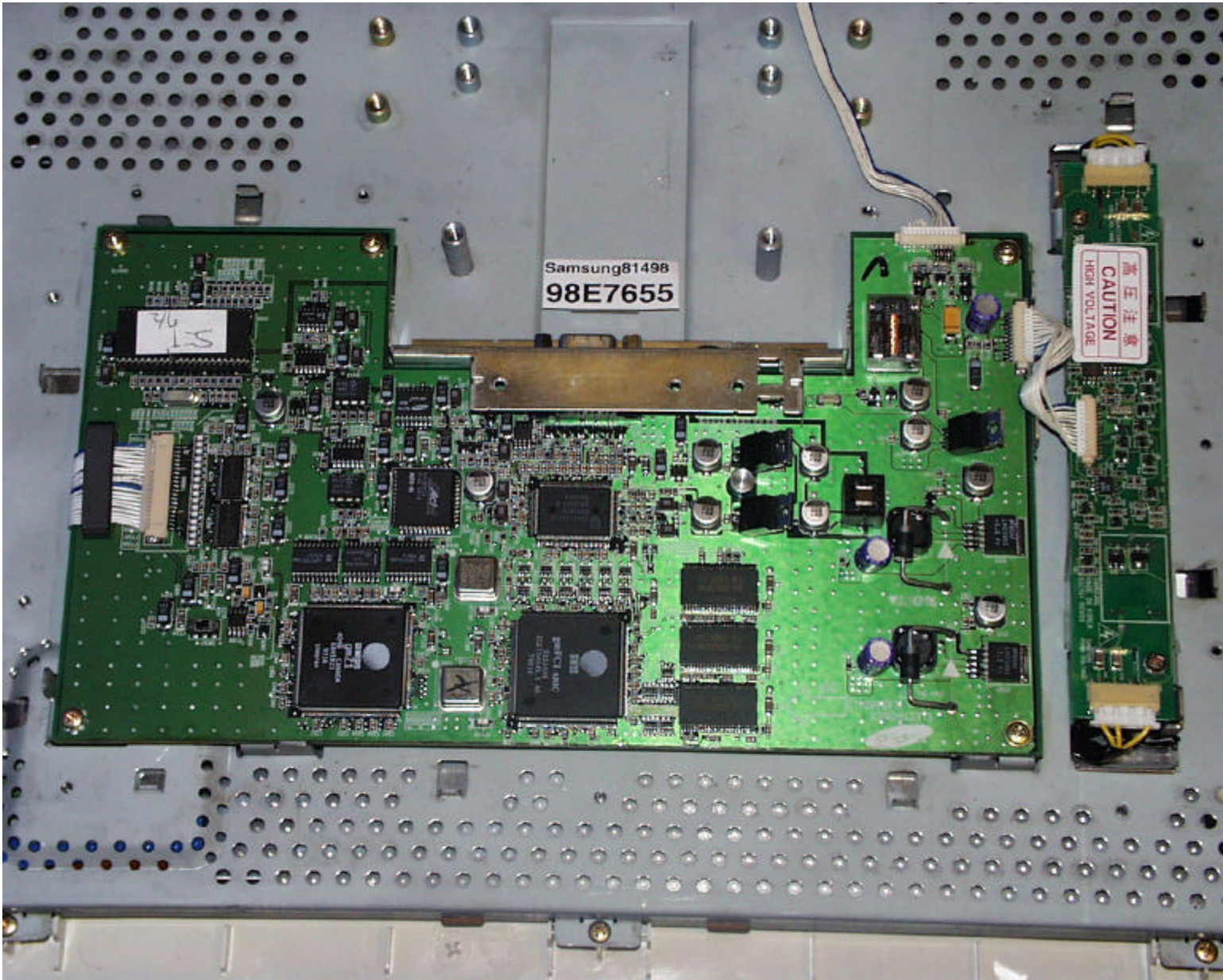








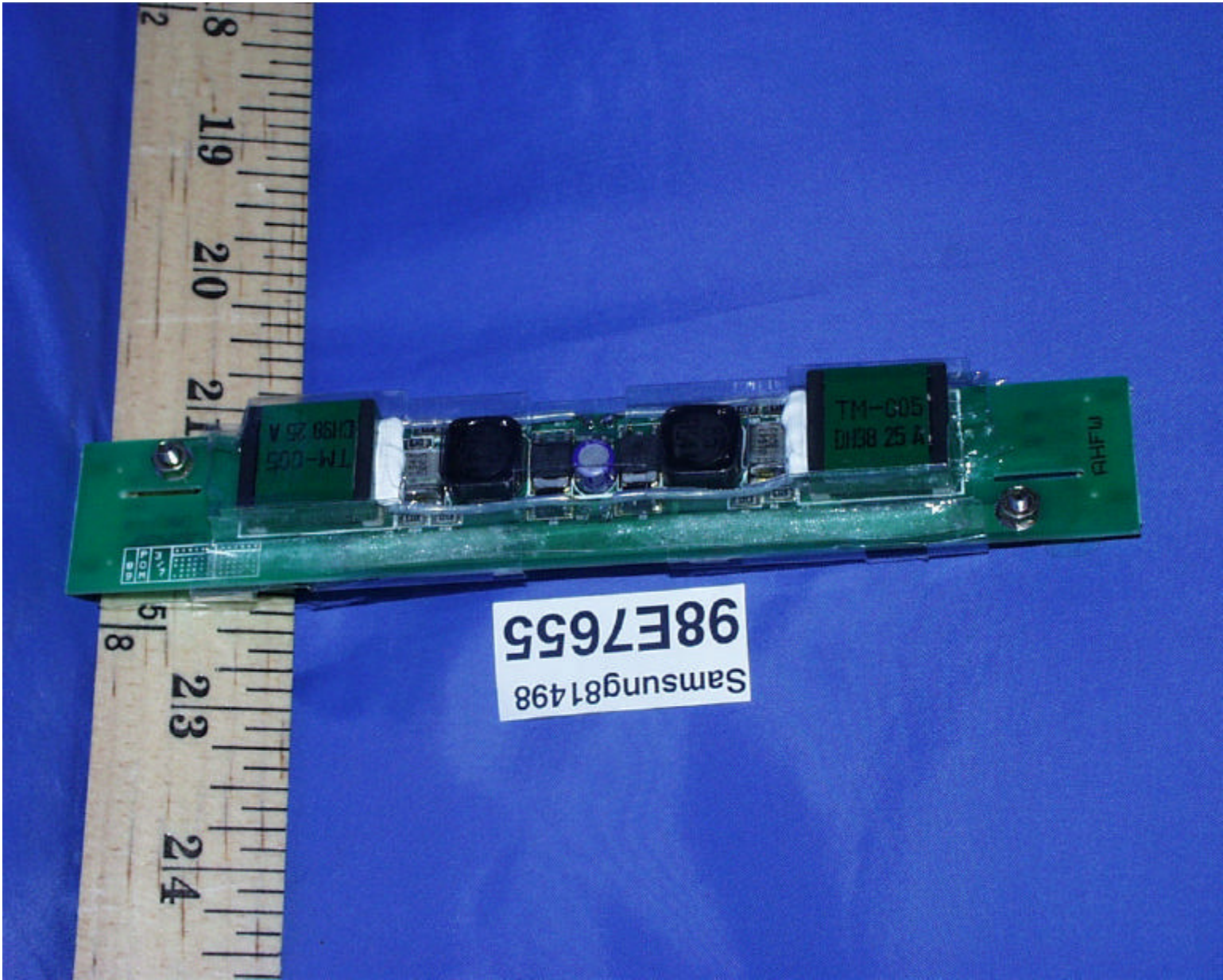




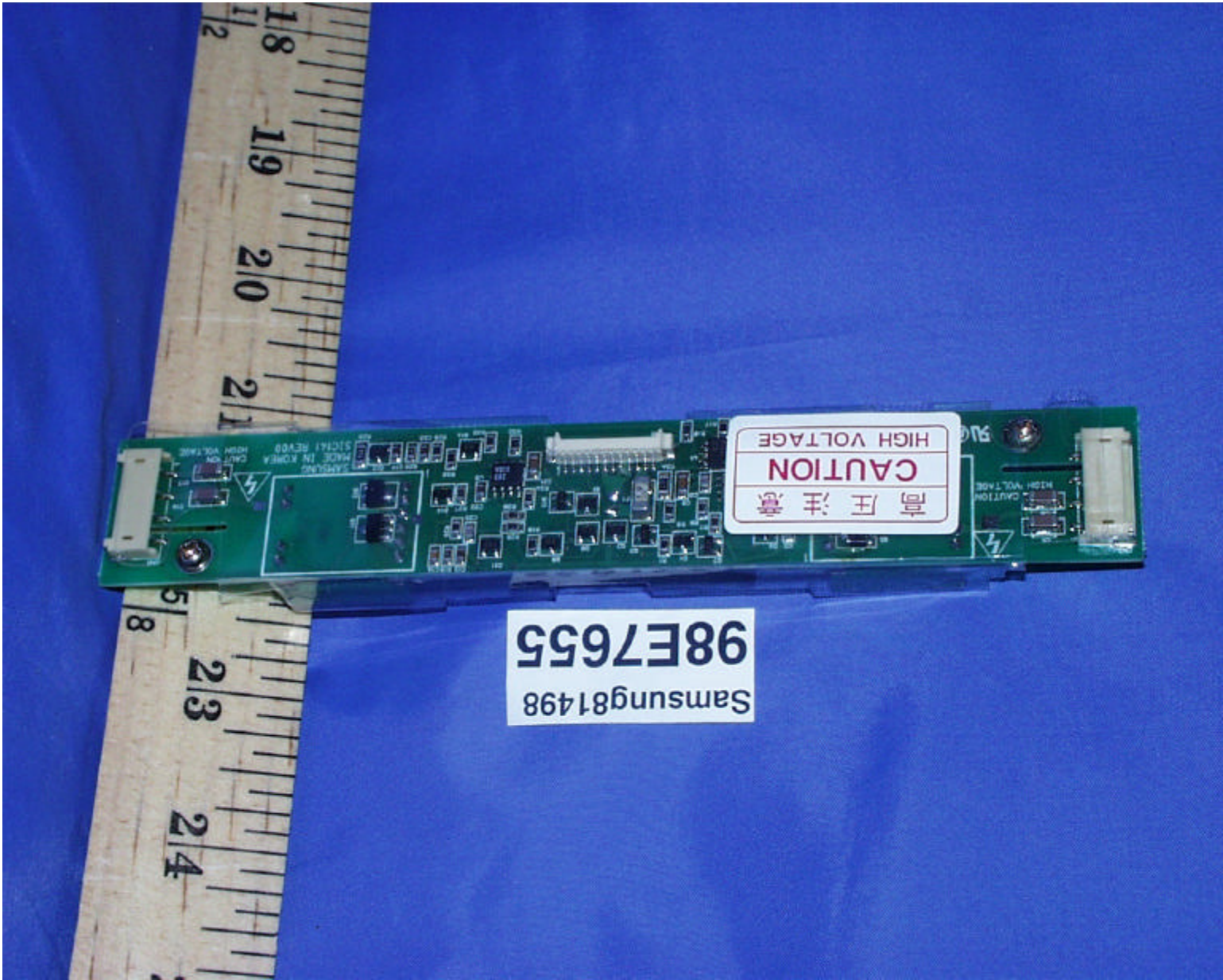
Samsung81498  
98E7655

高压注意  
CAUTION  
HIGH VOLTAGE

76  
LS



Samsung81498  
98E7655

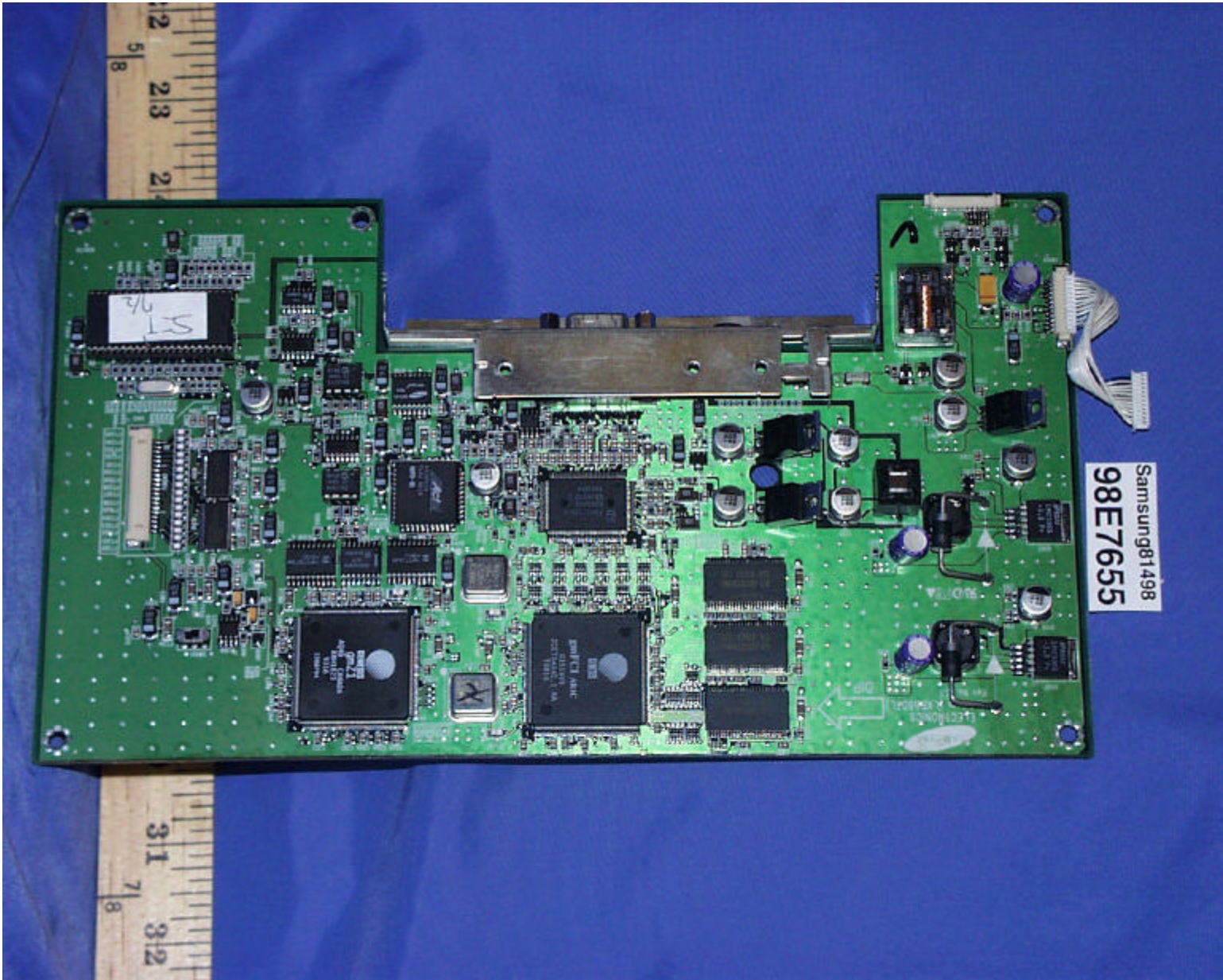


CAUTION  
高圧注意  
HIGH VOLTAGE

Samsung81498  
98E7655

18  
19  
20  
21

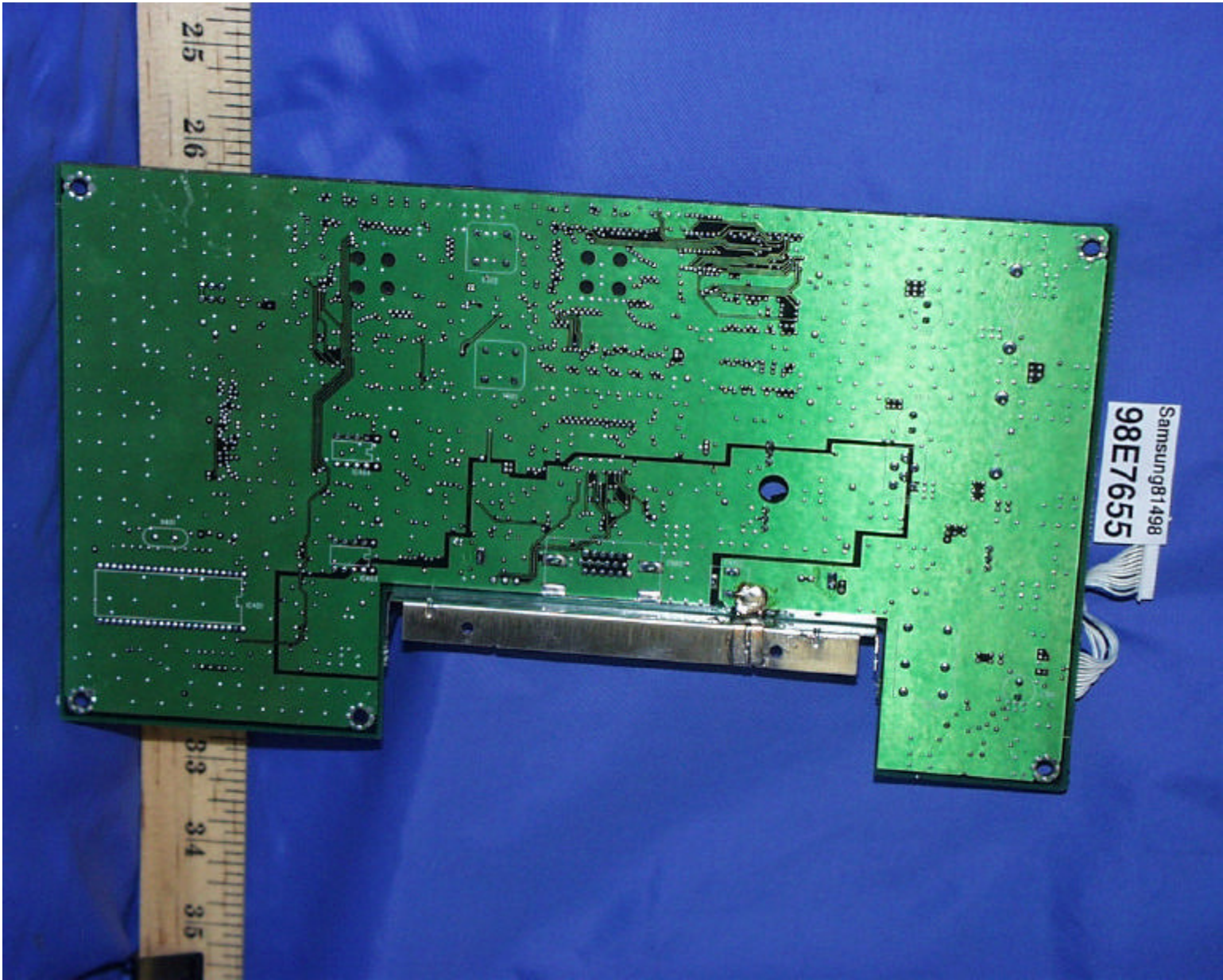
23  
24



Samsung 981498  
98E7655

2  
5/8  
2.3  
2

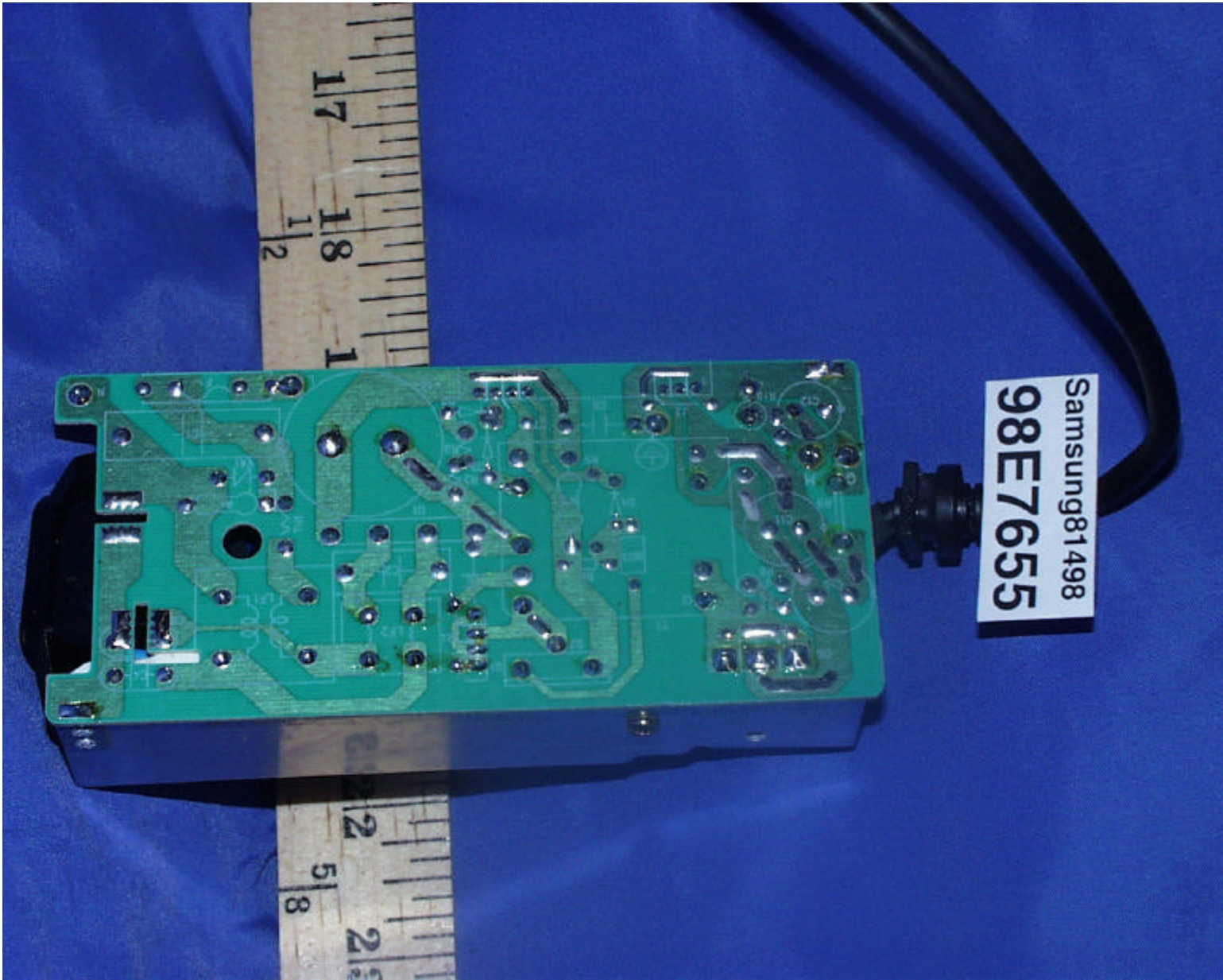
31  
7/8  
3.2



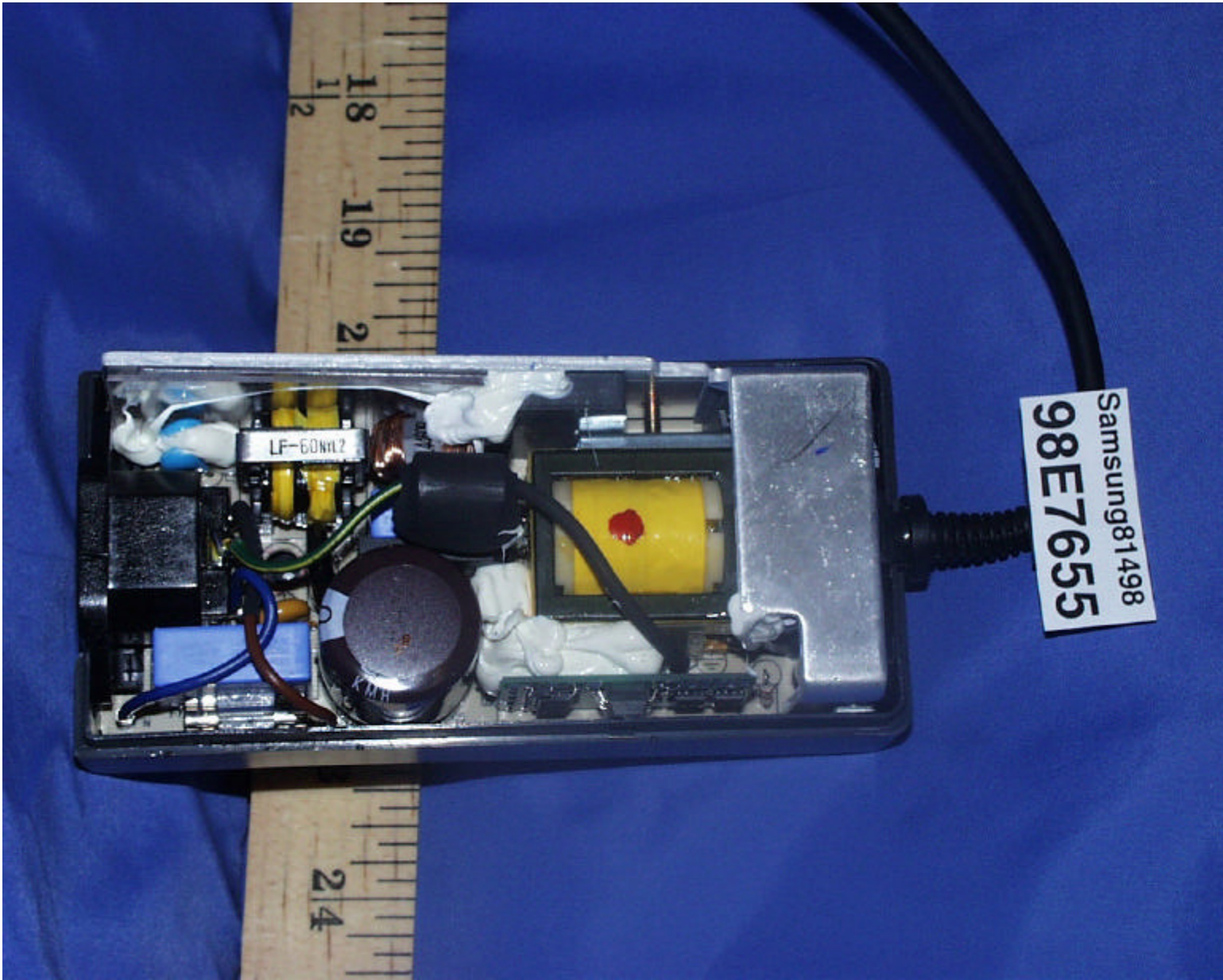
Samsung81498  
98E7655

25  
26

33  
34  
35



Samsung81498  
**98E7655**



Samsung81498  
98E7655

18 1/2  
19  
20  
21  
22  
23  
24

LF-60N1L2

