

Test Laboratory: UL CCS

**System Check for D2450V2 SN 706**

DUT: Dipole D2450V2 SN: 706; Type: D2450V2; Serial: 706

Communication System: CW; Frequency: 2450 MHz; Duty Cycle: 1:1  
 Medium parameters used:  $f = 2450$  MHz;  $\sigma = 1.98$  mho/m;  $\epsilon_r = 51.56$ ;  $\rho = 1000$  kg/m<sup>3</sup>  
 Phantom section: Flat Section

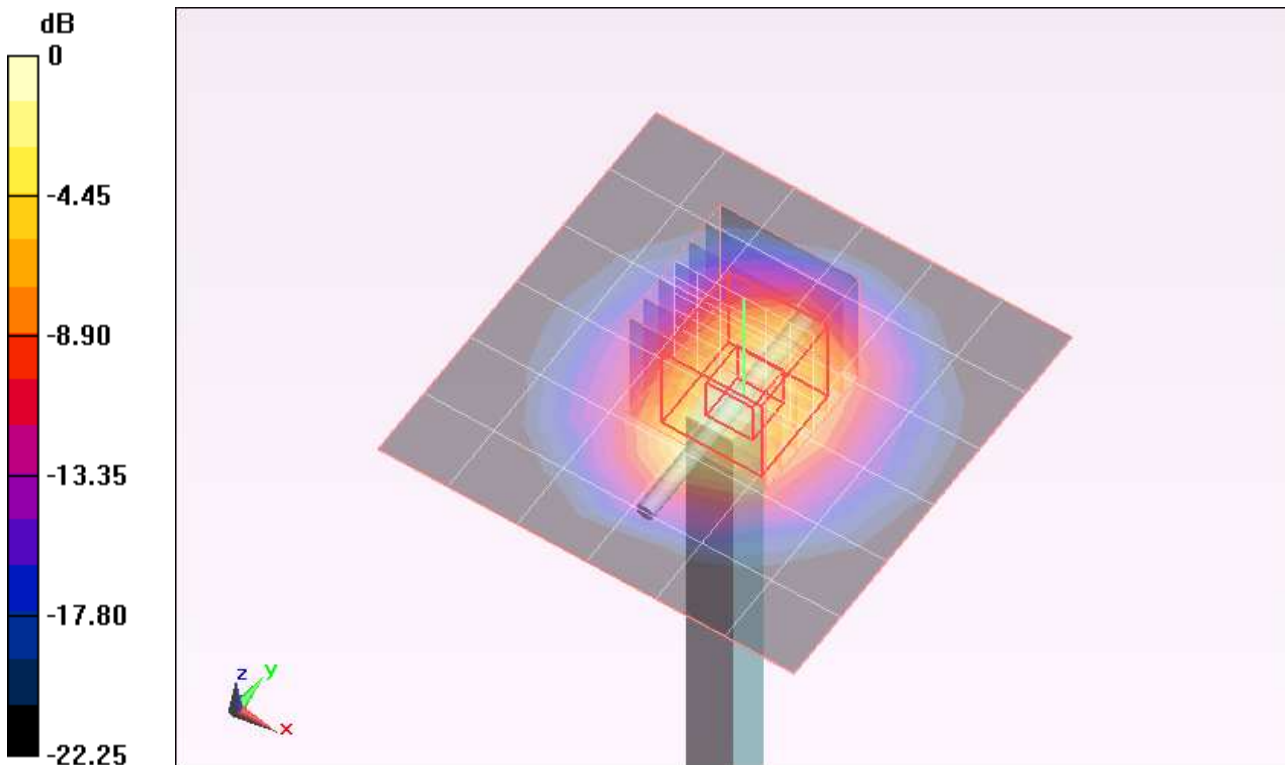
Room Ambient Temperature: 24.0 deg. C; Liquid Temperature: 23.0 deg. C

DASY5 Configuration:

- Area Scan setting - Find Secondary Maximum Within: 2.0 dB and with a peak SAR value greater than 0.0012W/kg
- Probe: EX3DV4 - SN3686; ConvF(6.86, 6.86, 6.86); Calibrated: 1/24/2011
- Sensor-Surface: 2.5mm (Mechanical Surface Detection)
- Electronics: DAE4 Sn1239; Calibrated: 11/17/2010
- Phantom: ELI 4.0; Type: QDOVA001BB; Serial: 1099
- Measurement SW: DASY52, Version 52.6 (1); SEMCAD X Version 14.4.2 (2595)

**D2600V2/Pin=100 mW/Area Scan (7x7x1):** Measurement grid: dx=15mm, dy=15mm  
 Maximum value of SAR (measured) = 6.451 mW/g

**D2600V2/Pin=100 mW/Zoom Scan (7x7x7)/Cube 0:** Measurement grid: dx=5mm, dy=5mm, dz=5mm  
 Reference Value = 58.431 V/m; Power Drift = -0.24 dB  
 Peak SAR (extrapolated) = 10.542 W/kg  
**SAR(1 g) = 5.07 mW/g; SAR(10 g) = 2.33 mW/g**  
 Maximum value of SAR (measured) = 7.217 mW/g



0 dB = 7.220mW/g

Test Laboratory: UL CCS

### System Check for D2450V2 SN 706

DUT: Dipole D2450V2 SN: 706; Type: D2450V2; Serial: 706

Communication System: CW; Frequency: 2450 MHz; Duty Cycle: 1:1

**D2600V2/Pin=100 mW/Z Scan (1x1x21):** Measurement grid: dx=20mm, dy=20mm, dz=5mm  
Maximum value of SAR (measured) = 7.261 mW/g

