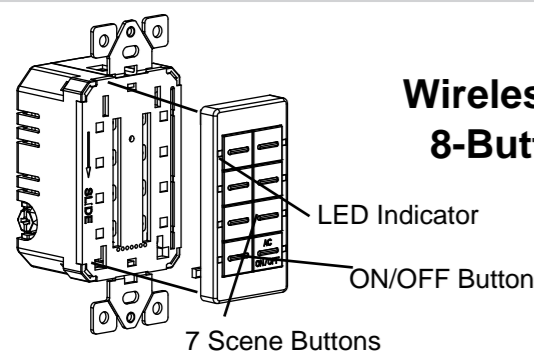


# INSTALLATION INSTRUCTIONS

## WFSC8

### Wireless Home Automation 8-Button Scene Controller



#### ◆ SPECIFICATIONS

Voltage.....	120VAC, 60Hz
Incandescent.....	1000W
Electronic Ballast.....	5A
Standard Ballast.....	1200VA
Resistive.....	1800W(15A)
Motor.....	1/2 HP
Operating Temperature.....	32°F~104°F(0°C~40°C)
Screw Torque.....	20 lbf-in
Protocol.....	IEEE 802.11b/g/n
Wireless Type.....	2.4GHz (Type 1.B action, operating control)

#### ◆ FEATURES

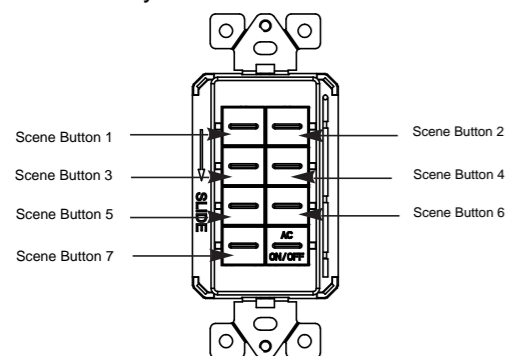
- Blue LED indicates the current status of scene
- You can Turn your devices on or off at any time or anywhere have Internet using the free Tuya App on your smartphone
- Interchangeable Color Face Plate
- Indoor use only

#### ◆ DESCRIPTION

The WFSC8 is our industry's first WIFI Wireless Scene Controller. It can be controlled by manual or through the App. After connect 2.4GHz WIFI you can remote control turn on/off light ,countdown, make weekly plan and there are seven scenes you can set them as your needs.

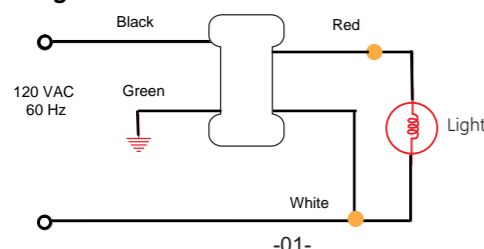
#### ◆ BUTTON INFORMATION

For the 8-Button Scene Controller, seven of them represent different scene you can set them as your needs by APP

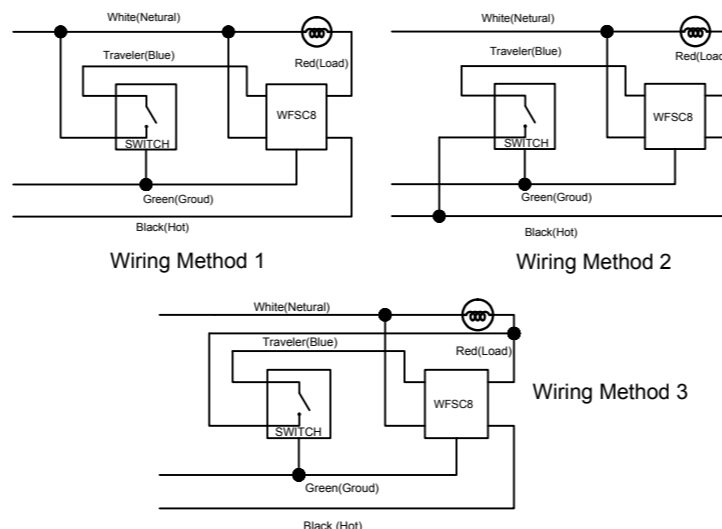


#### ◆ INSTALLATION

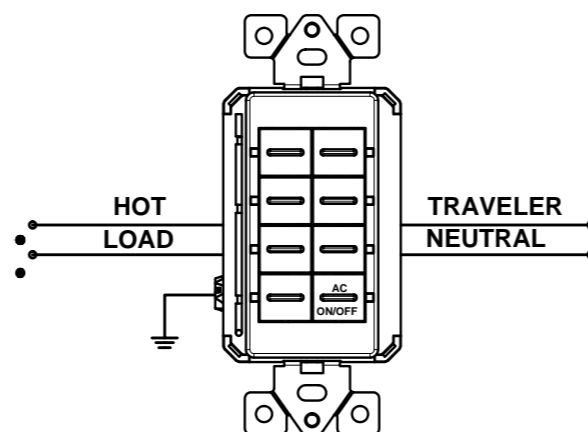
##### Single Switch Wiring Schematic



#### 3-Way Wiring Schematic using one WFSC8 and one 3-way Auxiliary Switch



#### Wiring Diagram:

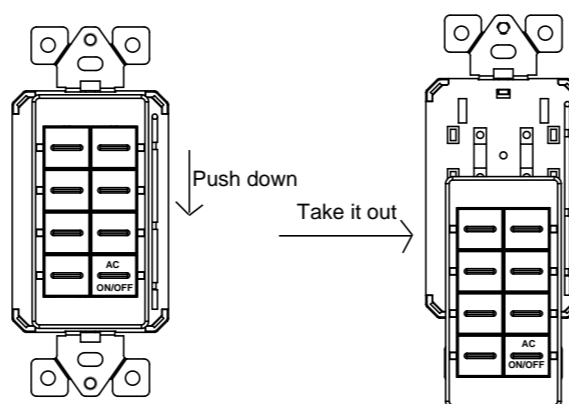


1. Connect the 8-button scene controller as shown in the wiring diagram: Black lead to hot wire, white lead to neutral wire, red lead to load wire, blue lead to traveler wire.
2. Check connections to be sure they are tight and no bare conductors are exposed.
3. Put the controller into the outlet box carefully.
4. Use the supplied screws to mount the controller into wall box.
5. Attach the wall plate.
6. Restore power to the circuit breaker and test the system.

#### Panel replacement

Button set panel now can be replaced as your wish . The operation is very simple, you just need to push the panel down and get it out then put on the new panel.

#### Wiring Diagram:



#### ◆ OPERATION

##### Manual Control

The Scene Controller paddle on the WFSC8 allows the user to:

- 1, Turn ON/OFF the connected lighting.
- a, To turn the connected lighting ON: Short press the ON/OFF button
- b, To turn the connected lighting OFF: Short press the ON/OFF button

- 2, Manual control the Scene button
- Short press one time on the scene button, after one second the triggered button will associate scenario 1, then corresponding indicator light turn on for 1 second and then off.
- Short press twice on the scene button that will trigger button associated scenario 2 at once, then corresponding indicator light turn on for 1 second and then off.

##### Tuya Smart App Control

1. Download Tuya Smart app from the App Store or Google Play.



OR scan QR code



2. Connect mobile device to your 2.4GHz WIFI network. Please note this Smart switch can only be connected to 2.4GHz network.

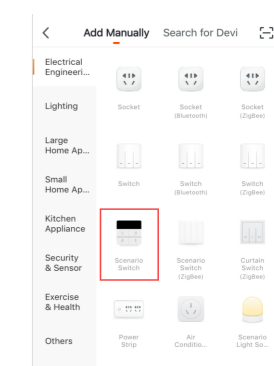
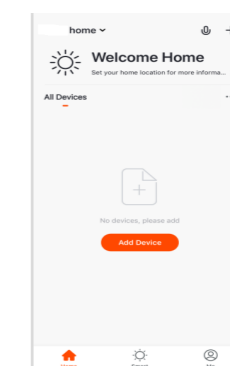
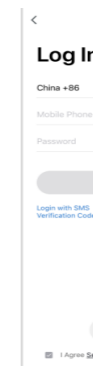


3. Launch Tuya and follow the in-app instructions to connect the WIFI switch to your network.

a. Login the Tuya

b. Click the " Add Device"

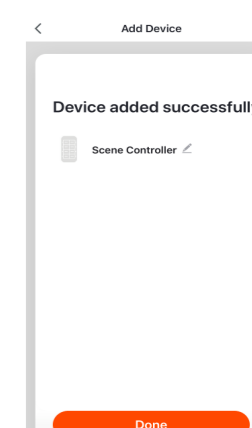
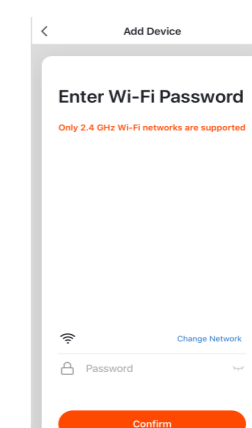
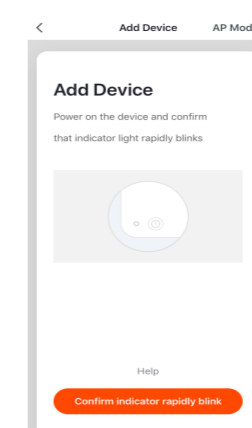
c. Select the "Scenario Switch"



d. Click the bottom button

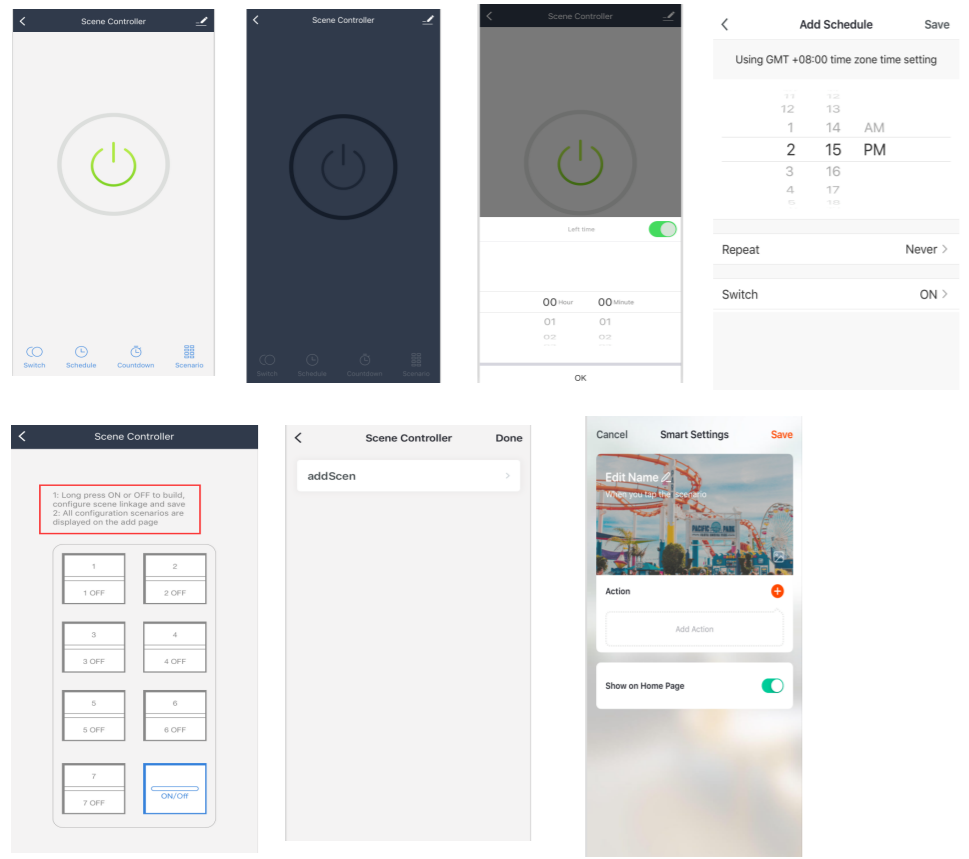
e. Enter your Wifi password

f. Finished



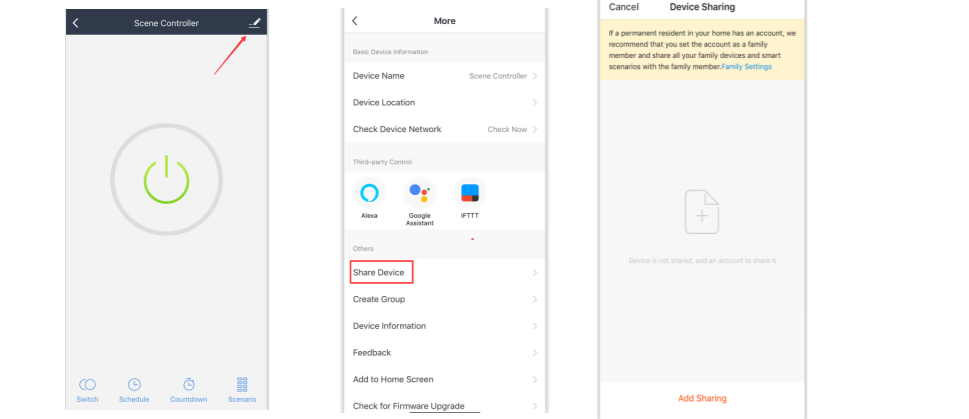
# INSTALLATION INSTRUCTIONS

4. When the device is finished add, this WIFI Switch can be opened, closed, countdown, making weekly and there are several scene you can set as your needs.

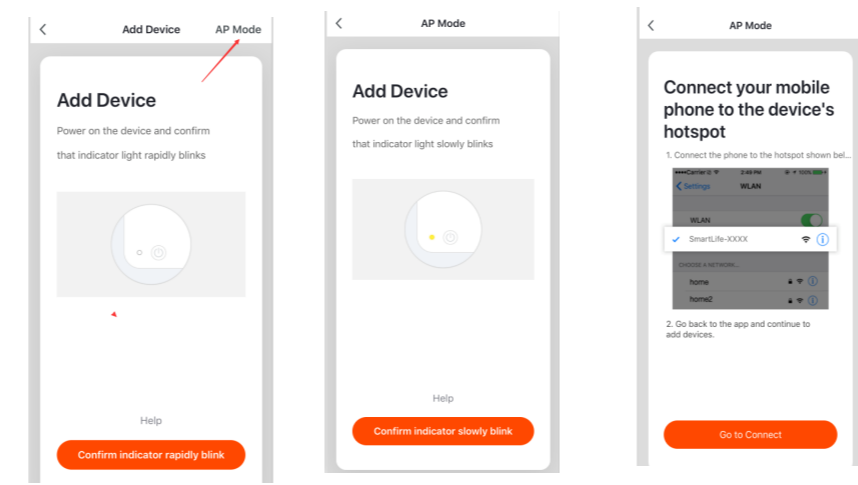


**Please Note:**

1. In the process of adding device, you must correctly select the router's WIFI device name and fill in the correct WIFI password, otherwise the device will not be able to add successfully.
2. This WIFI Outlet can only be paired with one phone device. If you want multiple phones to control the WIFI Outlet, click the "profile" then chose the " Device Sharing".



3. When the device fail to add in the App, please try to enter the AP mode. Before enter the AP mode please press and hold the button 5 seconds then the LED indicator in green and slowly blinks.



**◆ OPERATION AND LED INDICATION**

- Press and release the program button above 5 seconds and the green indicator will turn On and flashing that means the WIFI Outlet is connecting to the network.
- Quick Blinking Green:** Connecting to the network.
  - Slow Blinking Green:** AP mode.
  - Green bright after 2 seconds off:** Connected to the network.
  - Sold Green:** Network normaly or in standby mode.
  - Solid Blue:** The WIFI Switch is switched on.
  - Off:** The WIFI Switch is switched off.

**◆ FCC COMPLIANCE STATEMENT**

**Federal Communication Commission Interference Statement**  
 The equipment has been tested and found to comply with the limits for a class B Digital Device, pursuant to part 15 of the FCC Rules. These limits are designed to provide reasonable protection against harmful interference in a residential installation. This equipment uses, generates and can radiate radio frequency energy and, if not installed and used in accordance with the instruction, may cause harmful interference to radio communication. However, there is no guarantee that interference will not occur in a particular installation. If this equipment does cause harmful interference to radio or television reception, which can be determined by turning the equipment off and on, the user is encouraged to try to correct the interference by one or more of the following measures:

- Reorient or relocate the receiving antenna.
- Increase the separation between the equipment and receiver.
- Connect the equipment into an outlet on a circuit different from that to which the receiver is connected.
- Consult the dealer or an experienced radio/TV technician for help.

**FCC Caution:**  
 This device complies with Part 15 of the FCC Rules. Operation is subject to the following two conditions: 1. This device may not cause interference, and 2. This device must accept any interference received, including interference that may cause undesired operation.

**FCC Radiation Exposure Statement:**  
 This equipment complies with FCC radiation exposure limits set forth for an uncontrolled environment. This equipment should be installed and operated with minimum distance 20cm between the radiator & your body.

RF Exposure: A distance of 20 cm shall be maintained between the antenna and users, and the transmitter module may not be co-located with any other transmitter or antenna.

**Non-modification Statement:**  
 Any changes or modifications not expressly approved by the party responsible for compliance could void the user's authority to operate this equipment.

**ISED Statement**  
 This device contains licence-exempt transmitter(s)/receiver(s) that comply with Innovation, Science and Economic Development Canada's licenceexempt RSS(s) . Operation is subject to the following two conditions:

- (1) This device may not cause interference, and
- (2) This device must accept any interference, including interference that may cause undesired operation of the device.

Le présent contient des émetteurs / récepteurs exemptés de licence conformes aux RSS (RSS)d'Innovation, Sciences et Développement économique Canada.

L'exploitation est autorisée aux deux conditions suivantes:  
 (1) l'appareil ne doit pas produire de brouillage, et  
 (2) l'utilisateur de l'appareil doit accepter tout brouillage radioélectrique subi, même si le brouillage est susceptible d'en compromettre le fonctionnement.

**Radiation Exposure Statement**  
 This equipment complies with Canada radiation exposure limits set forth for an uncontrolled environment. This equipment should be installed and operated with minimum distance 20cm between the radiator & your body.

**Déclaration d'exposition aux radiations**  
 Cetéquipementestconforme Canada limitesd'exposition aux radiations dans un environnement non contrôlé. Cetéquipementdoitêtreinstallé et utilisé à distance minimum de 20cm entre le radiateur et votre corps.

**◆ WARRANTY INFORMATION**

Our company warranties its products to be free of defects in materials and workman-ship for a period of two (2) years. There are no obligations or liabilities on the part of our company for consequential damages arising out of or in connection with the use or performance of this product or other indirect damages with respect to loss of property, revenue, or profit, or cost of removal, installation or reinstallation.