

# User's Guide

## Dropad A8



Thanks:

Dear User

Thank you for purchasing our product. These operational guidelines for the user, to ensure you a quick and convenient to use,read the instructions carefully before use.

Any question please browse our company URL: [www.saayi.com](http://www.saayi.com)

## Contents

Contents.....	2
Product details.....	3
Using guide.....	4
1. Startup and shutdown.....	4
2. Desktop.....	4
3. Button.....	5
4. Main menu operation.....	6
5. System settings.....	7
6. Install\Uninstall\Run the application.....	12
7. Net work.....	13
8. Music.....	14
9. Video.....	15
10. Photo Browse.....	15
11. Wall paper.....	16
12. Recording.....	17
13. E-mail client.....	17
14. External devices.....	18
15. Firmware upgrade.....	19
16. Frequently asked question treatment.....	20
Note.....	20
FCC STATEMENT.....	22

### Product Details

Product Name	Dropad Tablet PC
Product Model	Dropad A8
CPU	High-performance A8 processor Frequency1000MHz Support for hardware 3D graphics acceleration
Chipset	Samsung S5PV210 Cortex A8 1GHZ
Screen	Size 7 inch; Resolution WVGA 800*480; Color 16 million colors;
Touch Screen	Capacitive Multi-Touch
Memory	DDR2 512Mb cache
Storage	Built-in flash memory 4GB/8GB/16GB/32/GB Support external TF card, maximum capacity of 32GB
Graphics card	Intergration
Camera	0.3MP Front Camera for Video Conference
Speaker	Hi-fi stereo speakers
Battery	Built-in 3000mAh High Polymer Li-ion Rechargeable Battery
Power adapter	DC 9V/1.5A
Ports	* USB 2.0 Host 1*USB2.0 UTG 1*Headphone 1*AC power 1*TF Card
OS	Google Android 2.1
Network	IEEE802.11b/g wireless network; 3G
Video resolution	Max support 1920*1080
Video	AVI RM\RMVB FLV DAT VOB WMV MPG MPEG-1 MPEG-2 MPEG-11 MP4 M4V VC-1 etc.
Audio	MP3 WMA AAC FLAC WAV OGG APE etc.
GPS	Selectable
Included in Box	Droipad host; Power adapter; Mini USB Cable; HDMI Cable; Earphone; Manual; warranty card
Weight	510g
Size	193*118*13.3mm
Color	Silvery grey
Application	Web Browsing; Email; QQ MSN SKPE; Games; E-book; Text processing; Video player; Music player; Others supporting Android 2.1 OS Programs; Built-in Google map etc.

## Using guide

### 1. Startup and Shutdown

\*Boot: Press and hold the power button, the system will enter the startup process

Boot Logo startup...,System has been started, are entering the Android system:

The system enters the default home interface.

\*Shutdown: Press the power button, pop-up device options, select Power off

Click OK, you can safely shut down.



\*Sleep: the machine under normal operating conditions, short press the power button, into hibernation, now, screen will close. Short press the power button again, be able to resume normal mode. When the time being use this MID can enable this feature when, to reduce power consumption.

### 2. Desktop

System after the completion of normal start, desktop can see Android 2.1

The default desktop by the: Status Bar; Quick Search Bar; Main menu

labels and a number of shortcut icons form.



The status bar to display the current system of network status; battery; time information. Quick search box for web search by typing key words. Middle right of the screen the main menu tab stop, click or drag to the main menu bar to start the default. Bottom of the screen displaying the browser shortcut icon.

Optimization of the status bar results, increase the volume of two icons volume+ / volume-. Click to adjust the volume.

### 3. Button

Android system uses in the course of the keys:(As follows)

Volume keys: the task bar volume+; volume- achieve changes in the volume.

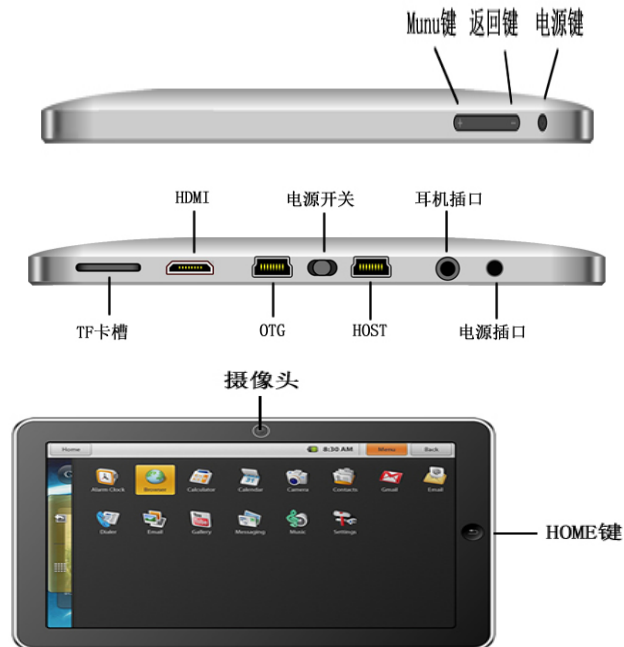
Power key: Press and switch machines. Short press to enter or leave the hibernation.

Menu button: Displays the current form of the menu items (if any).

Home button: Back to the main interface or choose.

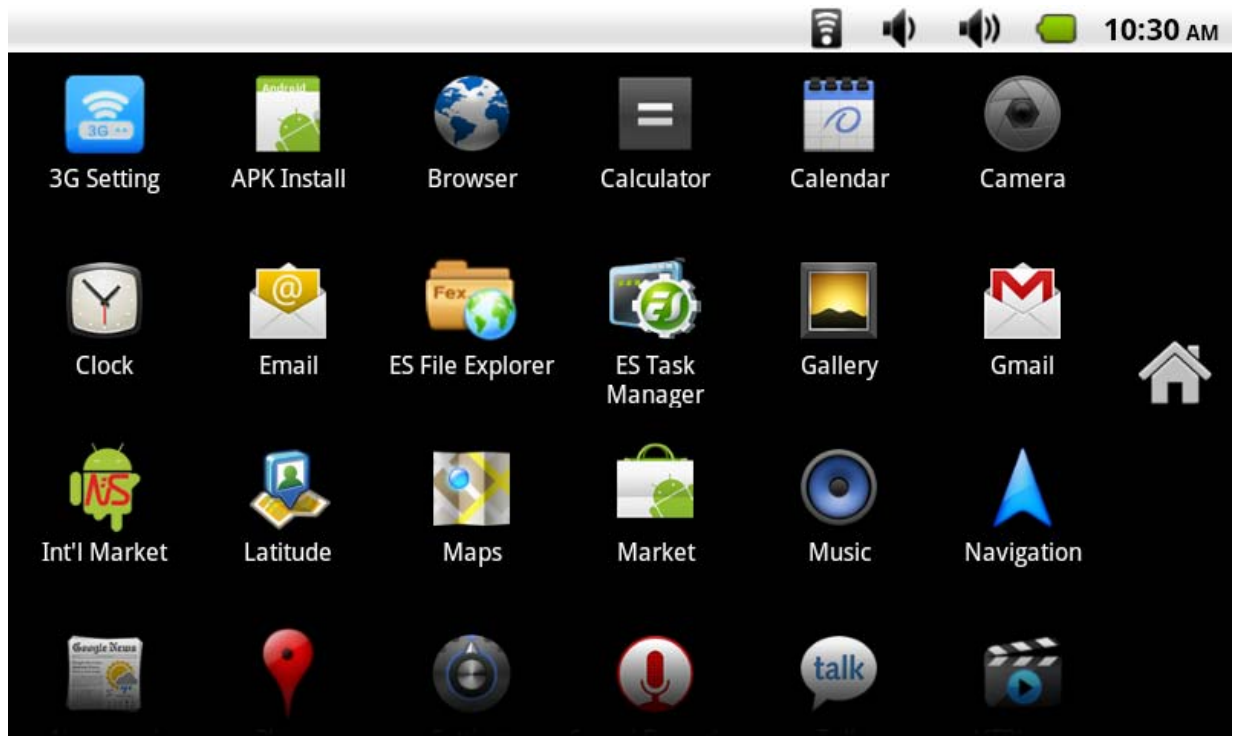
Return: Return on an interface.

Power switch: Power supply/Interrupt power supply.



#### 4. Main Menu Operation

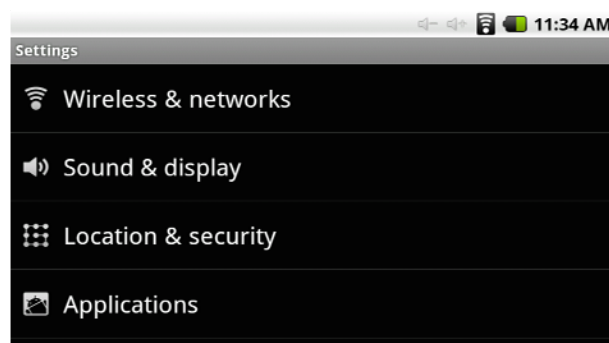
Click or drag the main interface of the main menu tab, the main menu will be from right to left(or bottom-first; last), and is as follows:



In the main menu, the system can be set to run existing applications, install a new application, start the touch calibration, music player, video player, web browsing, games and other operations.

## 5. System Settings

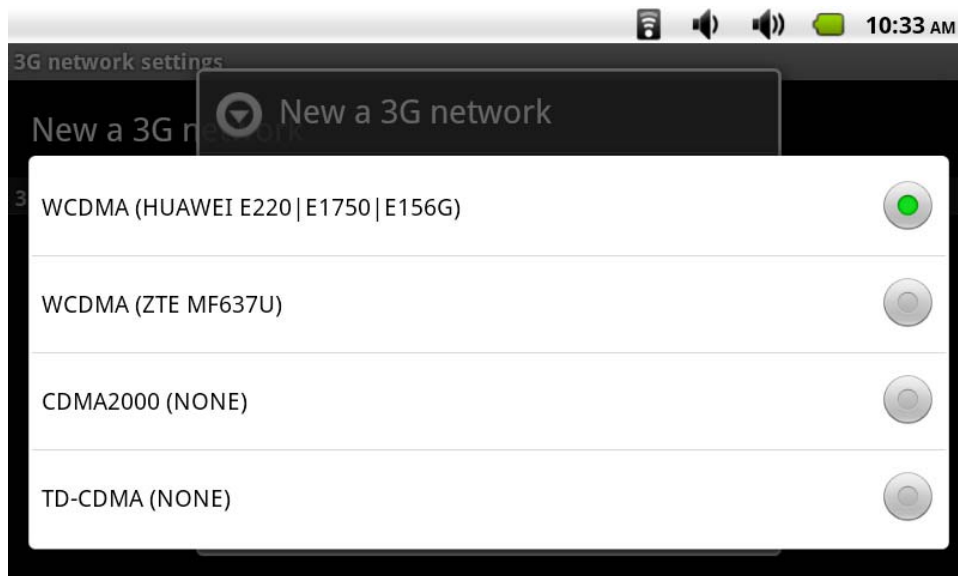
Click the main menu interface in the "Settings" icon, you can open the system settings interface, as shown below:



Select the appropriate operation of the relevant items, such as:

\*Wireless and network

3G network setup



\*Sound and displayvl

\*Date and time settings

\*About Equipment

Etc.

1) Date and Time settings:

Set interface options "time and date settings options" to enter the date and time settings interface:

Can choose to automatically: use the Network Time.



Can also select to set the date, select the time zone, set the time, time format, date format and other information.

For example, choose to set the date, as follows:



Select +: that the increase of 1 unit,

Select -: that the reduction of 1 unit.

Also can choose the number, enter the input mode. Directly entering the desired number, then select done. As follows:



Select "Settings". If you enter the number of legitimate, then the operation is successful, the system will set the option to use the new.

2) Screen brightness:

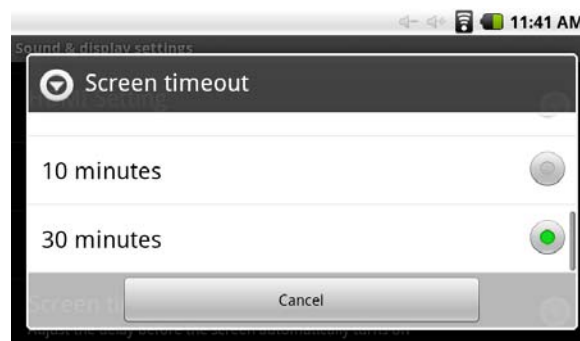
In the setup interface choose "sound and display settings" to enter the sound and display settings interface, scroll down section, select "Brightness", there are interface:



### 3) Standby screen:

Standby screen: the screen automatically locks the delay before.

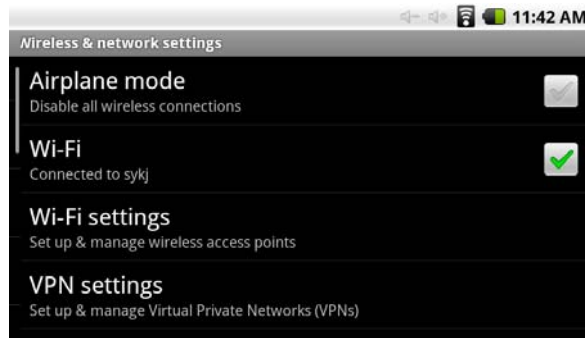
In the setup interface choose "sound and display settings" to enter the sound and display settings interface, scroll down section, select the "standby screen" interface appears, as follows:



**Note: In the video, the screen auto-standby function does not work**

### 4) WIFI Wireless Connection:

Click the main menu "settings" icon, go to "System Settings" screen, click on "wireless and network" into the "Wireless and network" setup interface. Click the "WIFI" section to quickly open the WIFI feature, click on "WIFI Settings" column enter "WIFI set interface" as shown below:



In the "WIFI settings" interface(above), click on the WIFI column also can open click on the WIFI column also can open and close the WIFI feature, click on the "Network Notice" lists Droipad A8 search to the wireless router, click the search name will pop up settings window, please follow the prompts to complete the WIFI net work links. Some encrypted network, need to enter a valid key. Link diagram below:



## 5) HDMI

This product supports HDMI output.

Using the HDMI cable to connect a HDMI input Droipad D9 and equipment. In the "Settings"/"Sound and display"/"Output Select" to

select HDMI output mode, the system output to HDMI.

If you choose HDMI output, you can "HDMI Setting" which choose to change the output format. System 1920×1080P and 1280×720P choice of two formats.



When using the HDMI output on, LCD will display the contents of the scaled output to external devices at the same time.

## 6. Install, uninstall, run the application

1) Installation: Adroid install the application there are a variety of ways, such as through USB install, install third-party program aid. Here we introduce assisted by the program offered by our compony to install. At the "settings interface" choice the "allow installing unbeknown origin program". Then click the ".APK program" to install.

After installation is complete, there will be "open" or "complete" message. Click "Open" to open to install the program directly. Click "Finish" then

exit the installation interface. Generally installed in the main menu program to create the corresponding icon. Directly in the main menu you can click on the icon to open the appropriate application.

Users can "Andrews market" online installation, or download via the computer, or online through the machine built-in browser to download and install.

2) Uninstall applications: You can use the appropriate third-party software management tools or applications that use the Android comes with management software.

Select "settings"/"application"/"management applications", select the appropriate application has been installed, to view program information, the uninstall program and other operations.

## 7. Network

### 1) Web browsing:

When the connected network, open the Web browser enter the URL, you can quickly browse the Web; or through the main desktop search bar enter the URL, open the web page.



### 2) Online video:

Through "Andrews market" or other means to download online video player software, online TV player, online music software, then install to this machine. Open the software installed, you can watch online video or online TV, listening to radio stations.

Users can also download other third-party Web applications, including web browsing, video player, web client, instant messaging software, etc.

## 8. Music

Click the main menu in the "music" icon, you can enter the music player interface. Here lists the system default user data area of all audio files. As shown below:



We can spread through the USB audio files synchronized manner, or by inserting the SD card with audio files were audio files, you can also download the audio files via the network.

Select the appropriate tab key, you can see for example "artist", "album", "songs" and other interface. Select song to play.



## 9. Video

Click the main menu in the "gallery" into the "gallery" the main interface, there will list all the video files and picture files. As shown below:



Select video file into the video player interface, as shown below:



You can select "play"; "stop"; "volume +"; "volume -"; "fast forward"; "rewind"; "progress bar" and control keys to control playback of the progress.

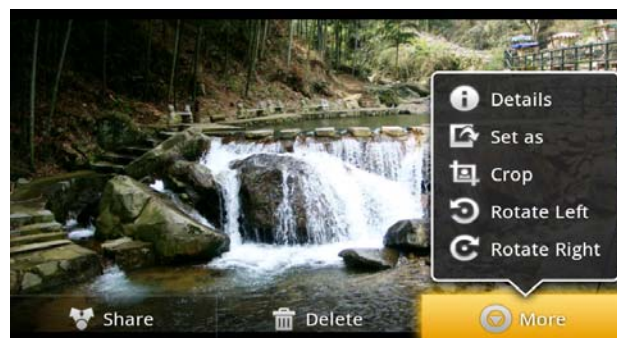
## 10. Photo Browse

Click the main menu in the "gallery" into the "gallery" the main interface,

there will list all the picture files and video files. As shown below:



Select a picture file, enter the picture playback interface, as shown below,

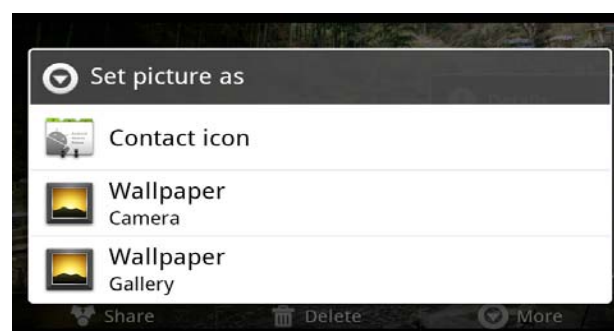


Can select "zoom"; "narrow"; "sharing"; "previous"; "next"; "set" and "delete" operation.

## 11. Wallpaper

System supports static image wallpaper, as well as 3D wallpaper.

In the desktop interface, hold down the menu button, pop-up menu option, select the "wallpaper", the pop-up "choose wallpaper source" selection box:



Have the following options:



Select "wallpaper gallery": You can select the system provides a static picture as wallpaper.

Select "current wallpaper": You can select the system provides 3D wallpaper.

Select "photo": You can use the picture as wallpaper Customize.

## 12. Recording

Click the main menu in the "recorder" icon into the "tape" the main interface. As shown below:



**Note: when inserting SD card recording, audio file will be saved in the SD card.**

Select "Record" button recording, recording is completed, select "Stop" button. At this point you can select the "Play" button plays the sound just recorded. Select "Use this record" button, save the recording, this can be found in the SD card in the appropriate recording documentation; If you do not save, you can select the "Discard" button.

## 13. E-mail client

In the main menu, click "Email" icon to enter the e-mail client. The first entry will ask to configure the account information. Then you can configure the information step by step.

Select a column can view the messages, you can view the column inside a "reply", "delete", "open attachment" and other operations.

#### **14. External devices**

1) USB connection: (As follows)

MID using the USB connection and PC, the default connection method is the synchronous mode.

"USB connected (Internal)": that built-in memory.

"USB is connected": said external memory (SD card).

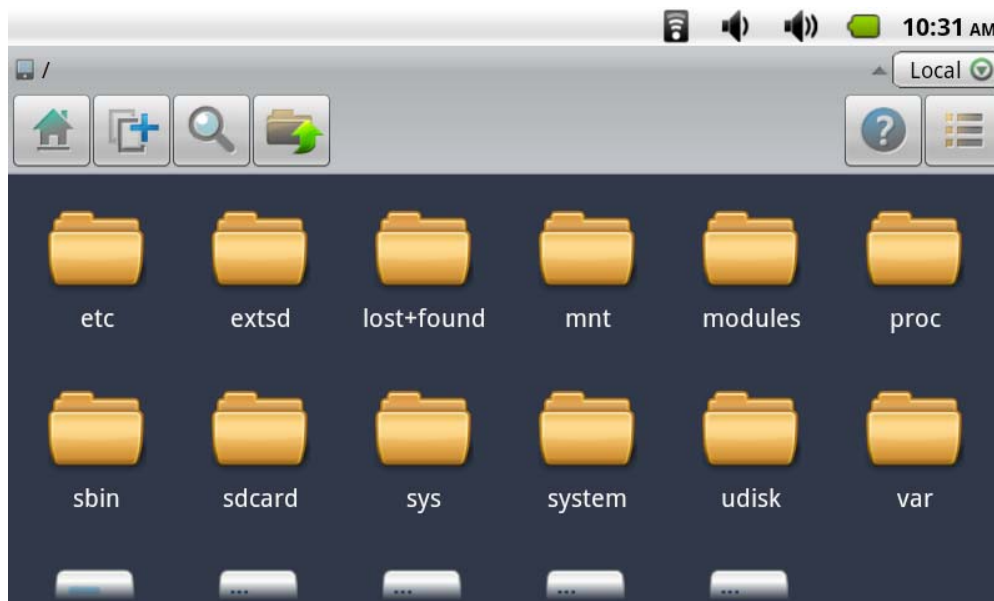
If you need to copy data using USB, you can select the load you need the memory.

Loading is complete, you can see in the PC and of the corresponding letter.

2) OTG use: (As follows)

Support the FAT32 format for mobile devices: for example, U disk, mobile hard drive.

Plug and Play connection method.



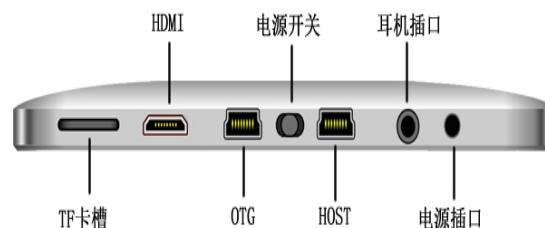
Use OTG cable Dropad A8 USB OTG port and external device.

EXTSD is tf

UDISK is u driver

### 3) Keyboard Mouse

Support plug and play USB mouse, keyboard equipment.



## 15. Firmware Upgrade

Android upgrade process will format the internal flash memory and if necessary, back up your data in advance.

Android PC upgrade client upgrades the use of specialized tools, please download the latest upgrade tool through our company network [www.siyisz.com](http://www.siyisz.com).

**Note: the first boot after the upgrade process is relatively slow, this is normal. The second boot much faster.**

## 16. Frequently Asked Questions Treatment

### 1) What is Android?

Android is Google on November 5, 2007 announced the open source Linux-based operating system name.

### 2) What is APK?

APK is Android Package acronym that Android installation package.

### 3) How to obtain the APK?

You can download via PC-side installation, you can also "Andrews market" online to download and install.

### 4) The machine operating system version?

This machine adopts Android2.1, built-in hardware 3D acceleration, can run android applications market most.

### 5) The machine can charge through USB?

No. Recommend the use of Annex DC 9V adapter to charge.

**Picture for reference only, product appearance, functionality please prevail in kind, the product rules and design are subject to change without prior notice.**

### **Note**

- \* This product is a high precision electronic products, do not disassemble.
- \* Avoid using this product at the following conditions: extreme temperature, moisture, dust, magnetic fields strong and long-term exposure to sunlight.

- \*When no using, please put the set in the good handbag.
- \*Please Do not place the set downward with the screen to prevent destroying the screen.
- \*Thunderstorm weather, Do not using the set outside. Do not using the set cross the road to avoid traffic accidents.
- \* When watch video and listen music, the headphone volume is too large may cause permanent hearing and speaker damage.
- \* Please only use permitted chargers and accessories, use any other type of products would violate the warranty regulations and may be dangerous.
- \* Please follow the relevant local environmental regulations to deal with obsolete machines and accessories.
- \*When cleaning the set and screen, please use appropriate cleaner.
- \* Please follow the user manual for standard operation. This product is in the course of any questions, please contact your local dealer or directly with the company's customer service center.

**FCC STATEMENT**

THIS DEVICE COMPLIES WITH PART 15 OF THE FCC RULES. OPERATION IS SUBJECT TO THE FOLLOWING TWO CONDITIONS: (1) THIS DEVICE MAY NOT CAUSE HARMFUL INTERFERENCE, AND (2) THIS DEVICE MUST ACCEPT ANY INTERFERENCE RECEIVED, INCLUDING INTERFERENCE THAT MAY CAUSE UNDESIRE OPERATION.

NOTE: This equipment has been tested and found to comply with the limits for a Class B digital device, pursuant to part 15 of the FCC Rules. These limits are designed to provide reasonable protection against harmful interference in a residential installation. This equipment generates, uses and can radiate radio frequency energy and, if not installed and used in accordance with the instructions, may cause harmful interference to radio communications. However, there is no guarantee that interference will not occur in a particular installation. If this equipment does cause harmful interference to radio or television reception, which can be determined by turning the equipment off and on, the user is encouraged to try to correct the interference by one or more of the following measures:

- Reorient or relocate the receiving antenna.
- Increase the separation between the equipment and receiver.
- Connect the equipment into an outlet on a circuit different from that to which the receiver is connected.
- Consult the dealer or an experienced radio/TV technician for help.