

Installing Your Wi-Fi Doorbell



What You Will Need

View our online video tutorial at amcrest.com/doorbellsetup

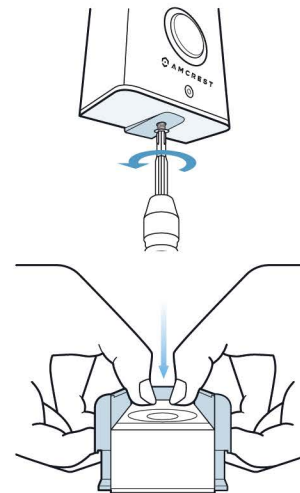


Extra Equipment

NOTE The 15/64" masonry drill bit may be required if installing on concrete stucco or brick.

Step 1: Remove the Bracket and Faceplate

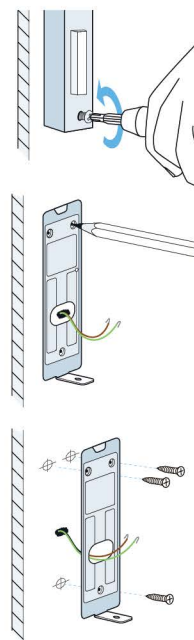
There is a preinstalled faceplate and bracket on the doorbell that you will need to remove.



A Use the included Philips head screwdriver to remove the bracket screw from the doorbell.

B Place your fingers in the indentations on the sides of the doorbell, simultaneously pull away and push the pre-installed faceplate out.

Step 2: Installing the Mounting Bracket



A If you have an existing doorbell, remove it from the wall and disconnect the wires. These are the wires we will be using to install your new Amcrest Wi-Fi Doorbell.

B Place the doorbell bracket to fit your existing doorbell wiring. Then mark the screw holes with a marker.

C For Wood, Drywall or Soft Surfaces: Secure the doorbell bracket to the mounting surface using the included screwdriver and mounting screws.

For Concrete, Stucco or Brick: Using your previously marked holes as a guide, drill holes into the mounting surface using the included drill bit. Then, insert wall anchors and secure the mounting brackets using the included mounting screws.