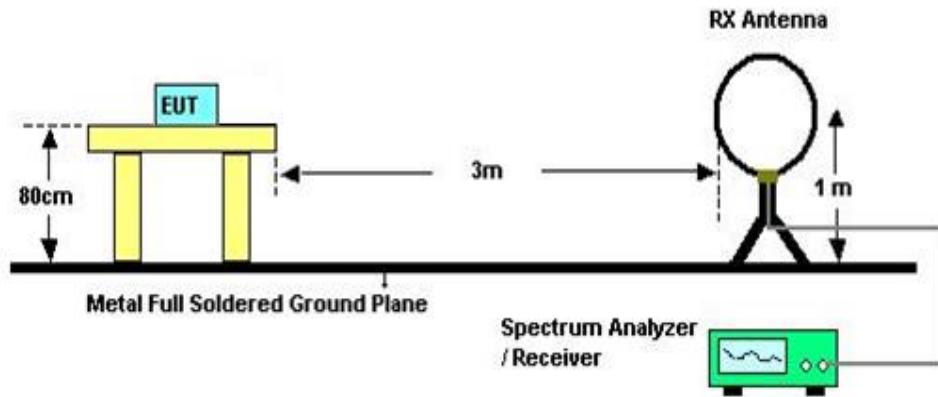


TEST SETUP AND PROCEDURE

Below 30MHz

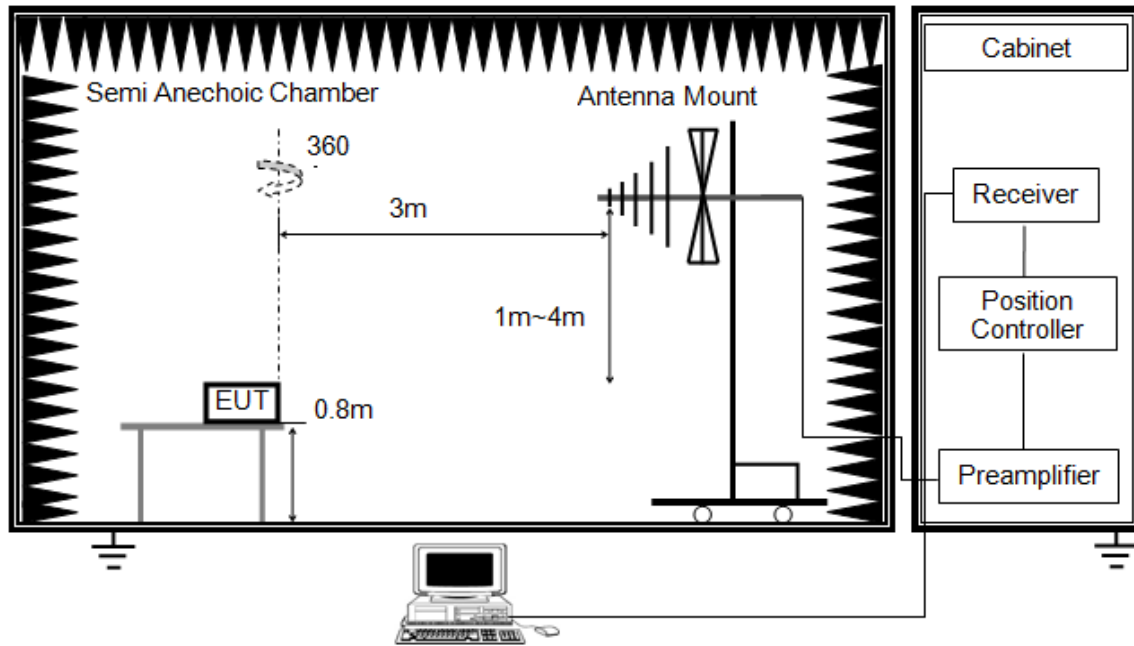


The setting of the spectrum analyser

RBW	200 Hz (From 9kHz to 0.15MHz)/ 9kHz (From 0.15MHz to 30MHz)
VBW	200 Hz (From 9kHz to 0.15MHz)/ 9kHz (From 0.15MHz to 30MHz)
Sweep	Auto
Detector	Peak/QP/Average
Trace	Max hold

1. The testing follows the guidelines in ANSI C63.10-2013 and KDB 414788.
2. The EUT was arranged to its worst case and then turntable (from 0 degree to 360 degrees) to find the maximum reading. A pre-amp and a high pass filter are used for the test in order to get better signal level. Both Horizontal, Face-on and Face-off polarizations of the antenna are set to make the measurement.
3. The EUT was placed on a turntable with 0.8 meter above ground.
4. The EUT was set 3 meters from the interference receiving antenna, which was mounted on the top of a 1m height antenna tower.
5. The radiated emission limits are based on measurements employing a CISPR quasi-peak detector except for the frequency bands 9-90 kHz, 110-490 kHz and above 1000 MHz. Radiated emission limits in these three bands are based on measurements employing an average detector
6. For measurement below 1GHz, the initial step in collecting conducted emission data is a spectrum analyzer peak detector mode pre-scanning the measurement frequency range. Significant peaks are then marked and then Quasi Peak detector mode re-measured. If the emission level of the EUT measured by the peak detector is 3 dB lower than the applicable limit, the peak emission level will be reported. Otherwise, the emission measurement will be repeated using the quasi-peak detector and reported.
7. For the actual test configuration, please refer to the related item in this test report (Photographs of the Test Configuration)

Below 1G

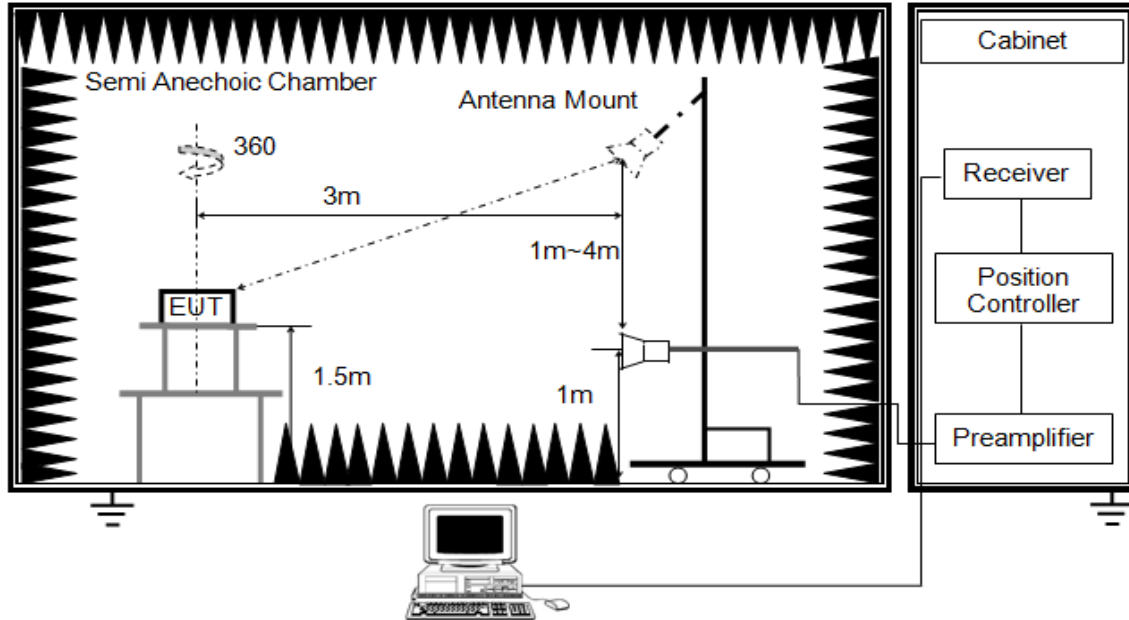


The setting of the spectrum analyser

RBW	120 kHz
VBW	300 kHz
Sweep	Auto
Detector	Peak/QP
Trace	Max hold

1. The testing follows the guidelines in ANSI C63.10-2013.
2. The EUT was arranged to its worst case and then tune the antenna tower (from 1 m to 4 m) and turntable (from 0 degree to 360 degrees) to find the maximum reading. A pre-amp and a high pass filter are used for the test in order to get better signal level. Both horizontal and vertical polarizations of the antenna are set to make the measurement.
3. The EUT was placed on a turntable with 0.8 meter above ground.
4. The EUT was set 3 meters from the interference receiving antenna, which was mounted on the top of a variable height antenna tower.
5. For measurement below 1GHz, the initial step in collecting conducted emission data is a spectrum analyzer peak detector mode pre-scanning the measurement frequency range. Significant peaks are then marked and then Quasi Peak detector mode re-measured. If the emission level of the EUT measured by the peak detector is 3 dB lower than the applicable limit, the peak emission level will be reported. Otherwise, the emission measurement will be repeated using the quasi-peak detector and reported.
6. For the actual test configuration, please refer to the related Item in this test report (Photographs of the Test Configuration)

ABOVE 1G

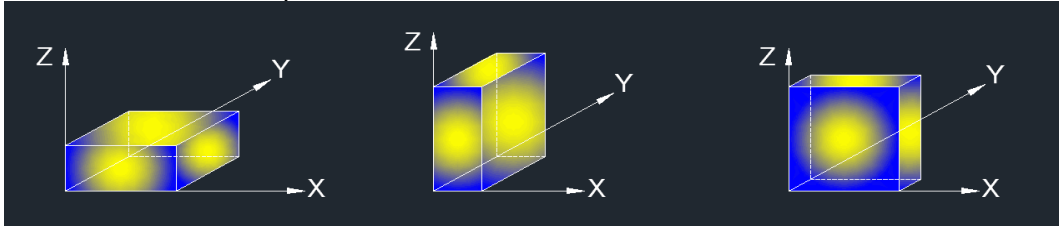


The setting of the spectrum analyser

RBW	1 MHz
VBW	PEAK: 3 MHz AVG: See note6
Sweep	Auto
Detector	Peak
Trace	Max hold

1. The testing follows the guidelines in ANSI C63.10-2013.
2. The EUT was arranged to its worst case and then tune the antenna tower (from 1 m to 4 m) and turntable (from 0 degree to 360 degrees) to find the maximum reading. A pre-amp and a high pass filter are used for the test in order to get better signal level. Both horizontal and vertical polarizations of the antenna are set to make the measurement.
3. The EUT was placed on a turntable with 1.5m above ground.
4. The EUT was set 3 meters from the interference receiving antenna, which was mounted on the top of a variable height antenna tower.
5. For measurement above 1GHz, the emission measurement will be measured by the peak detector. This peak level, once corrected, must comply with the limit specified in Section 15.209.
6. For measurements above 1 GHz, the resolution bandwidth is set to 1 MHz, then the video bandwidth is set to 3 MHz for peak measurements; and 1 MHz resolution bandwidth with video bandwidth $\geq 1/T$ but not less than the setting list in section 7.1 when use peak detector, max hold to be run for at least $[50 \cdot (1/\text{Duty Cycle})]$ traces for average measurements. For the Duty Cycle need to refer the results in section 7.1.
7. For the actual test configuration, please refer to the related item in this test report (Photographs of the Test Configuration)

X axis, Y axis, Z axis positions:



Note: For all radiated test, EUT in each of three orthogonal axis emissions had been tested, but only the worst case (Z axis) data recorded in the report.



8.2. TEST ENVIRONMENT

Temperature	22°C	Relative Humidity	56%
Atmosphere Pressure	101kPa	Test Voltage	AC 120V

8.3. RESTRICTED BANDEDGE

Test Result Table

Test Mode	Test Antenna	Channel	P _{uw} (dBm)	Verdict
11B	Antenna1	LCH	<Limit	PASS
		HCH	<Limit	PASS
11G	Antenna1	LCH	<Limit	PASS
		HCH	<Limit	PASS
11N20 MIMO	Antenna1+Antenna2	LCH	<Limit	PASS
		HCH	<Limit	PASS
11N40 MIMO	Antenna1+Antenna2	LCH	<Limit	PASS
		HCH	<Limit	PASS

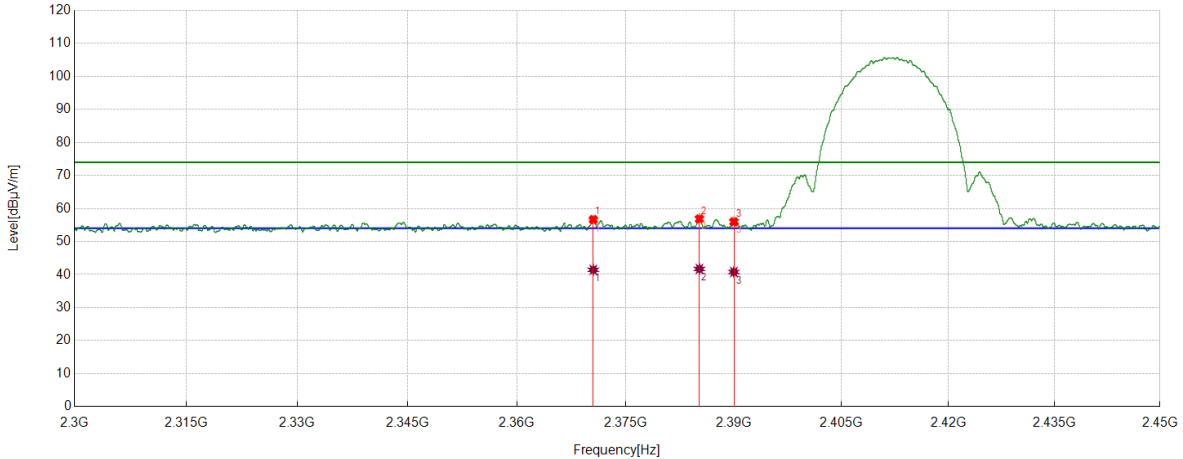
Remark:

- 1) For this product, it has two antennas, antenna1 and antenna2, but only the 802.11N HT20 and 802.11N HT40 modes can support both the SISO and MIMO technical. But for the modes of 11B & 11G, only the antenna 1 is working.
- 2) Through pre-testing all the test modes of 11N 20 and 11N40, including SISO and MIMO, but only the data if worse case is included in this test report.



TEST GRAPHS

Test Mode	Channel	Polarization	Verdict
11B	LCH	Horizontal	PASS



PK Result:

No.	Frequency	Reading Level	Correct Factor	Result	Limit	Margin	Remark
	[MHz]	[dBuV/m]	[dB]	[dBuV/m]	[dBuV/m]	[dB]	
1	2370.5276	45.36	11.27	56.63	74.00	-17.37	Horizontal
2	2385.2107	45.54	11.28	56.82	74.00	-17.18	Horizontal
3	2390	44.72	11.25	55.97	74.00	-18.03	Horizontal

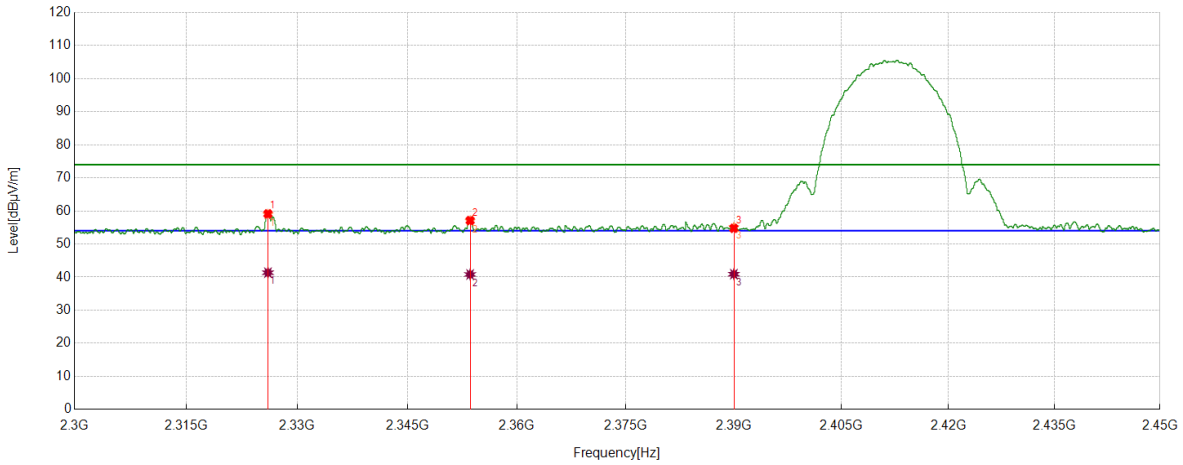
AV Result:

No.	Frequency	Reading Level	Correct Factor	Result	Limit	Margin	Remark
	[MHz]	[dBuV/m]	[dB]	[dBuV/m]	[dBuV/m]	[dB]	
1	2370.5276	30.17	11.27	41.44	54.00	-12.56	Horizontal
2	2385.2107	30.42	11.28	41.70	54.00	-12.30	Horizontal
3	2390	29.53	11.25	40.78	54.00	-13.22	Horizontal

- Note: 1. Peak detector: RBW: 1 MHz, VBW: 3 MHz.
 2. Average detector: RBW: 1 MHz, VBW: 1/T MHz(refer to clause 7.1.).
 3. Measurement = Reading Level + Correct Factor.
 4. Only the worst case emission was recorded, if it complies with the limit, the other emissions deemed to comply with the limit.



Test Mode	Channel	Polarization	Verdict
11B	LCH	Vertical	PASS



PK Result:

No.	Frequency	Reading Level	Correct Factor	Result	Limit	Margin	Remark
	[MHz]	[dBuV/m]	[dB]	[dBuV/m]	[dBuV/m]	[dB]	
1	2326.0658	48.21	10.92	59.13	74.00	-14.87	Vertical
2	2353.5942	45.95	11.15	57.10	74.00	-16.90	Vertical
3	2390	43.50	11.25	54.75	74.00	-19.25	Vertical

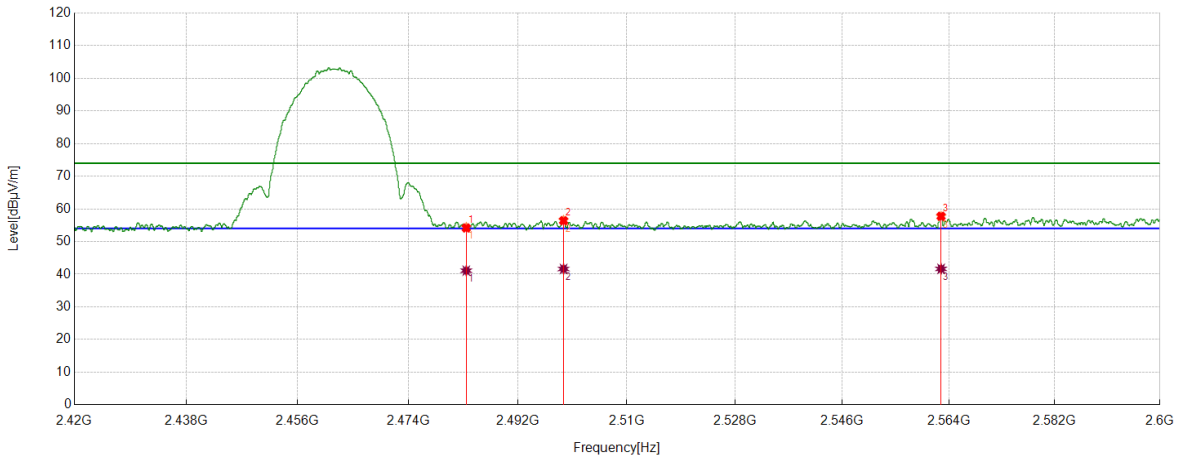
AV Result:

No.	Frequency	Reading Level	Correct Factor	Result	Limit	Margin	Remark
	[MHz]	[dBuV/m]	[dB]	[dBuV/m]	[dBuV/m]	[dB]	
1	2326.0658	30.42	10.92	41.34	54.00	-12.66	Vertical
2	2353.5942	29.66	11.15	40.81	54.00	-13.19	Vertical
3	2390	29.65	11.25	40.90	54.00	-13.10	Vertical

- Note: 1. Peak detector: RBW: 1 MHz, VBW: 3 MHz.
 2. Average detector: RBW: 1 MHz, VBW: 1/T MHz(refer to clause 7.1.).
 3. Measurement = Reading Level + Correct Factor.
 4. Only the worst case emission was recorded, if it complies with the limit, the other emissions deemed to comply with the limit.



Test Mode	Channel	Polarization	Verdict
11B	HCH	Horizontal	PASS



PK Result:

No.	Frequency	Reading Level	Correct Factor	Result	Limit	Margin	Remark
	[MHz]	[dBuV/m]	[dB]	[dBuV/m]	[dBuV/m]	[dB]	
1	2483.5	42.88	11.28	54.16	74.00	-19.84	Horizontal
2	2499.5249	44.92	11.47	56.39	74.00	-17.61	Horizontal
3	2562.6678	45.81	11.93	57.74	74.00	-16.26	Horizontal

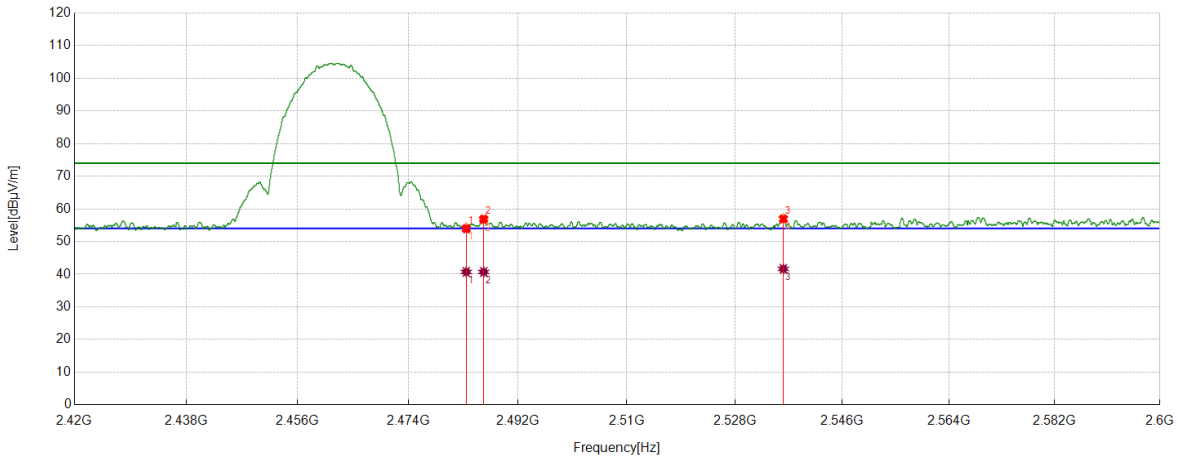
AV Result:

No.	Frequency	Reading Level	Correct Factor	Result	Limit	Margin	Remark
	[MHz]	[dBuV/m]	[dB]	[dBuV/m]	[dBuV/m]	[dB]	
1	2483.5	29.81	11.28	41.09	54.00	-12.91	Horizontal
2	2499.5249	30.14	11.47	41.61	54.00	-12.39	Horizontal
3	2562.6678	29.71	11.93	41.64	54.00	-12.36	Horizontal

- Note: 1. Peak detector: RBW: 1 MHz, VBW: 3 MHz.
 2. Average detector: RBW: 1 MHz, VBW: 1/T MHz(refer to clause 7.1.).
 3. Measurement = Reading Level + Correct Factor.
 4. Only the worst case emission was recorded, if it complies with the limit, the other emissions deemed to comply with the limit.



Test Mode	Channel	Polarization	Verdict
11B	HCH	Vertical	PASS



PK Result:

No.	Frequency	Reading Level	Correct Factor	Result	Limit	Margin	Remark
	[MHz]	[dBuV/m]	[dB]	[dBuV/m]	[dBuV/m]	[dB]	
1	2483.5	42.65	11.28	53.93	74.00	-20.07	Vertical
2	2486.3608	45.53	11.33	56.86	74.00	-17.14	Vertical
3	2536.092	45.06	11.86	56.92	74.00	-17.08	Vertical

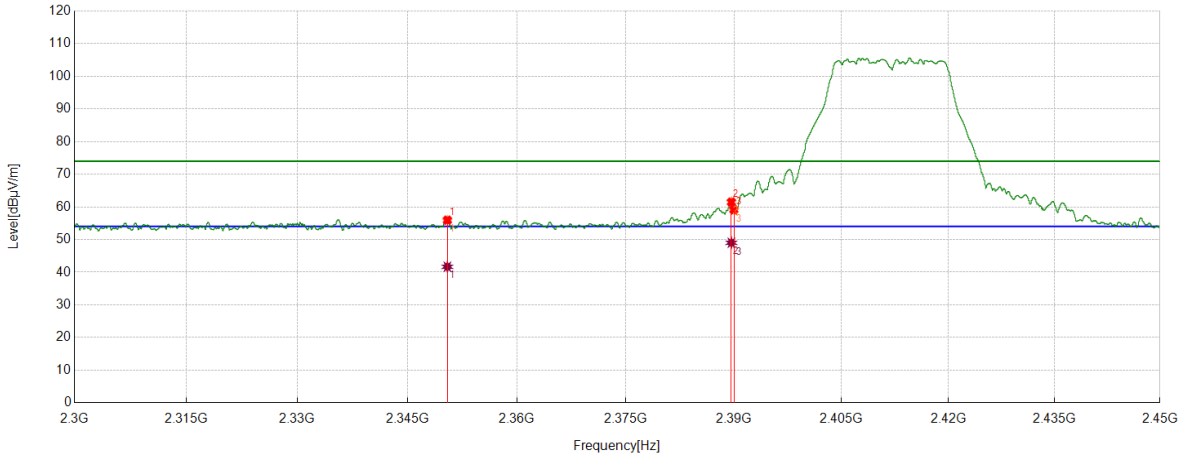
AV Result:

No.	Frequency	Reading Level	Correct Factor	Result	Limit	Margin	Remark
	[MHz]	[dBuV/m]	[dB]	[dBuV/m]	[dBuV/m]	[dB]	
1	2483.5	29.43	11.28	40.71	54.00	-13.29	Vertical
2	2486.3608	29.36	11.33	40.69	54.00	-13.31	Vertical
3	2536.092	29.77	11.86	41.63	54.00	-12.37	Vertical

- Note: 1. Peak detector: RBW: 1 MHz, VBW: 3 MHz.
 2. Average detector: RBW: 1 MHz, VBW: 1/T MHz(refer to clause 7.1.).
 3. Measurement = Reading Level + Correct Factor.
 4. Only the worst case emission was recorded, if it complies with the limit, the other emissions deemed to comply with the limit.



Test Mode	Channel	Polarization	Verdict
11G	LCH	Horizontal	PASS



PK Result:

No.	Frequency	Reading Level	Correct Factor	Result	Limit	Margin	Remark
	[MHz]	[dBuV/m]	[dB]	[dBuV/m]	[dBuV/m]	[dB]	
1	2350.4813	44.80	11.15	55.95	74.00	-18.05	Horizontal
2	2389.655	50.22	11.25	61.47	74.00	-12.53	Horizontal
3	2390	47.88	11.25	59.13	74.00	-14.87	Horizontal

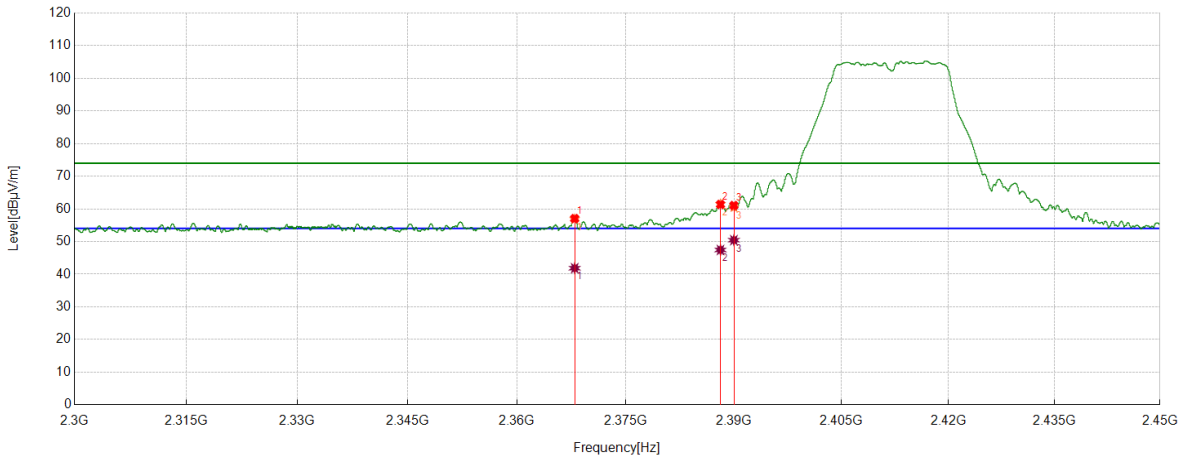
AV Result:

No.	Frequency	Reading Level	Correct Factor	Result	Limit	Margin	Remark
	[MHz]	[dBuV/m]	[dB]	[dBuV/m]	[dBuV/m]	[dB]	
1	2350.4813	30.52	11.15	41.67	54.00	-12.33	Horizontal
2	2389.655	37.77	11.25	49.02	54.00	-4.98	Horizontal
3	2390	37.43	11.25	48.68	54.00	-5.32	Horizontal

- Note: 1. Peak detector: RBW: 1 MHz, VBW: 3 MHz.
 2. Average detector: RBW: 1 MHz, VBW: 1/T MHz(refer to clause 7.1.).
 3. Measurement = Reading Level + Correct Factor.
 4. Only the worst case emission was recorded, if it complies with the limit, the other emissions deemed to comply with the limit.



Test Mode	Channel	Polarization	Verdict
11G	LCH	Vertical	PASS



PK Result:

No.	Frequency	Reading Level	Correct Factor	Result	Limit	Margin	Remark
	[MHz]	[dBuV/m]	[dB]	[dBuV/m]	[dBuV/m]	[dB]	
1	2367.9585	45.78	11.25	57.03	74.00	-16.97	Vertical
2	2388.136	50.10	11.26	61.36	74.00	-12.64	Vertical
3	2390	49.80	11.25	61.05	74.00	-12.95	Vertical

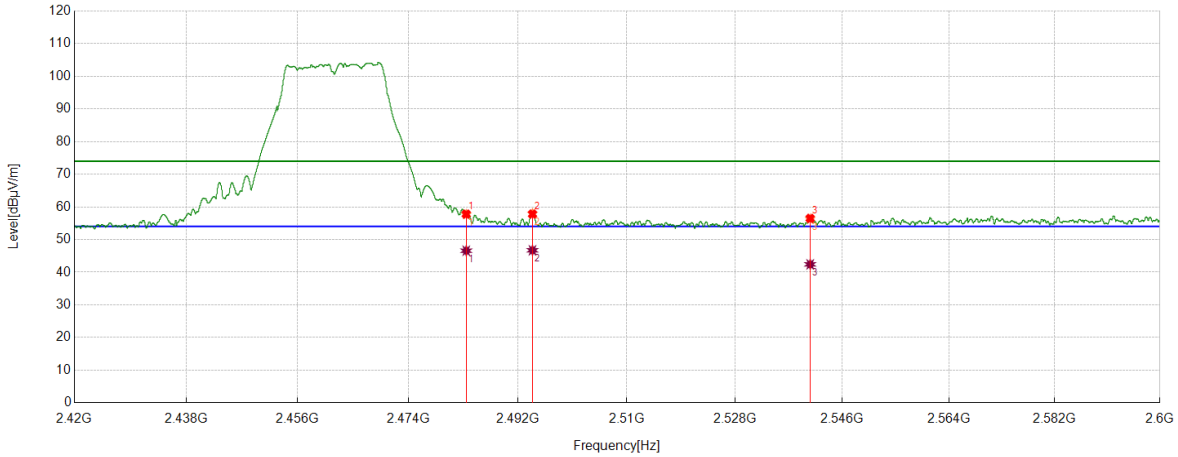
AV Result:

No.	Frequency	Reading Level	Correct Factor	Result	Limit	Margin	Remark
	[MHz]	[dBuV/m]	[dB]	[dBuV/m]	[dBuV/m]	[dB]	
1	2367.9585	30.60	11.25	41.85	54.00	-12.15	Vertical
2	2388.136	36.17	11.26	47.43	54.00	-6.57	Vertical
3	2390	39.18	11.25	50.43	54.00	-3.57	Vertical

- Note: 1. Peak detector: RBW: 1 MHz, VBW: 3 MHz.
 2. Average detector: RBW: 1 MHz, VBW: 1/T MHz(refer to clause 7.1.).
 3. Measurement = Reading Level + Correct Factor.
 4. Only the worst case emission was recorded, if it complies with the limit, the other emissions deemed to comply with the limit.



Test Mode	Channel	Polarization	Verdict
11G	HCH	Horizontal	PASS



PK Result:

No.	Frequency	Reading Level	Correct Factor	Result	Limit	Margin	Remark
	[MHz]	[dBuV/m]	[dB]	[dBuV/m]	[dBuV/m]	[dB]	
1	2483.5	46.51	11.28	57.79	74.00	-16.21	Horizontal
2	2494.3943	46.37	11.43	57.80	74.00	-16.20	Horizontal
3	2540.5926	44.62	11.86	56.48	74.00	-17.52	Horizontal

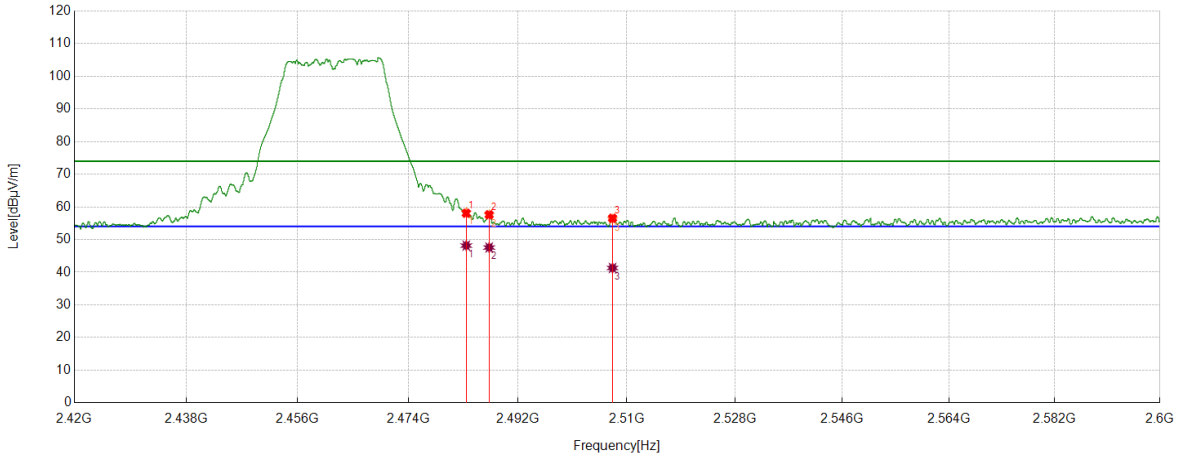
AV Result:

No.	Frequency	Reading Level	Correct Factor	Result	Limit	Margin	Remark
	[MHz]	[dBuV/m]	[dB]	[dBuV/m]	[dBuV/m]	[dB]	
1	2483.5	35.30	11.28	46.58	54.00	-7.42	Horizontal
2	2494.3943	35.28	11.43	46.71	54.00	-7.29	Horizontal
3	2540.5926	30.55	11.86	42.41	54.00	-11.59	Horizontal

- Note: 1. Peak detector: RBW: 1 MHz, VBW: 3 MHz.
 2. Average detector: RBW: 1 MHz, VBW: 1/T MHz(refer to clause 7.1.).
 3. Measurement = Reading Level + Correct Factor.
 4. Only the worst case emission was recorded, if it complies with the limit, the other emissions deemed to comply with the limit.



Test Mode	Channel	Polarization	Verdict
11G	HCH	Vertical	PASS



PK Result:

No.	Frequency	Reading Level	Correct Factor	Result	Limit	Margin	Remark
	[MHz]	[dBuV/m]	[dB]	[dBuV/m]	[dBuV/m]	[dB]	
1	2483.5	46.78	11.28	58.06	74.00	-15.94	Vertical
2	2487.2609	46.26	11.34	57.60	74.00	-16.40	Vertical
3	2507.626	45.04	11.49	56.53	74.00	-17.47	Vertical

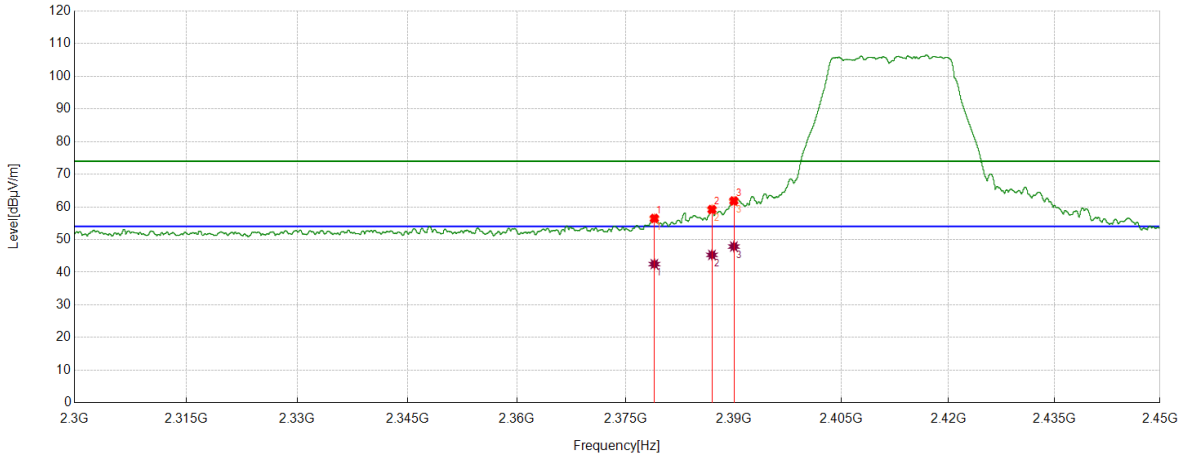
AV Result:

No.	Frequency	Reading Level	Correct Factor	Result	Limit	Margin	Remark
	[MHz]	[dBuV/m]	[dB]	[dBuV/m]	[dBuV/m]	[dB]	
1	2483.5	36.88	11.28	48.16	54.00	-5.84	Vertical
2	2487.2609	36.23	11.34	47.57	54.00	-6.43	Vertical
3	2507.626	29.81	11.49	41.30	54.00	-12.70	Vertical

- Note: 1. Peak detector: RBW: 1 MHz, VBW: 3 MHz.
 2. Average detector: RBW: 1 MHz, VBW: 1/T MHz(refer to clause 7.1.).
 3. Measurement = Reading Level + Correct Factor.
 4. Only the worst case emission was recorded, if it complies with the limit, the other emissions deemed to comply with the limit.



Test Mode	Channel	Polarization	Verdict
11N HT20 MIMO	LCH	Horizontal	PASS



PK Result:

No.	Frequency	Reading Level	Correct Factor	Result	Limit	Margin	Remark
	[MHz]	[dBuV/m]	[dB]	[dBuV/m]	[dBuV/m]	[dB]	
1	2378.9661	45.17	11.31	56.48	74.00	-17.52	Horizontal
2	2386.9546	47.93	11.27	59.20	74.00	-14.80	Horizontal
3	2390	50.59	11.25	61.84	74.00	-12.16	Horizontal

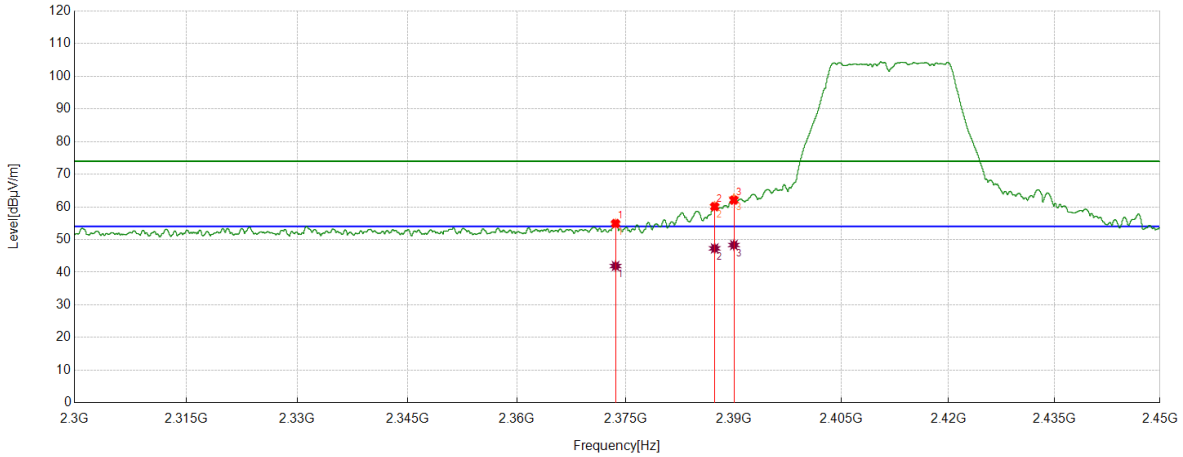
AV Result:

No.	Frequency	Reading Level	Correct Factor	Result	Limit	Margin	Remark
	[MHz]	[dBuV/m]	[dB]	[dBuV/m]	[dBuV/m]	[dB]	
1	2378.9661	31.17	11.31	42.48	54.00	-11.52	Horizontal
2	2386.9546	34.03	11.27	45.30	54.00	-8.70	Horizontal
3	2390	36.62	11.25	47.87	54.00	-6.13	Horizontal

- Note: 1. Peak detector: RBW: 1 MHz, VBW: 3 MHz.
 2. Average detector: RBW: 1 MHz, VBW: 1/T MHz(refer to clause 7.1.).
 3. Measurement = Reading Level + Correct Factor.
 4. Only the worst case emission was recorded, if it complies with the limit, the other emissions deemed to comply with the limit.



Test Mode	Channel	Polarization	Verdict
11N HT20 MIMO	LCH	Vertical	PASS



PK Result:

No.	Frequency	Reading Level	Correct Factor	Result	Limit	Margin	Remark
	[MHz]	[dBuV/m]	[dB]	[dBuV/m]	[dBuV/m]	[dB]	
1	2373.603	43.62	11.29	54.91	74.00	-19.09	Vertical
2	2387.3297	48.83	11.27	60.10	74.00	-13.90	Vertical
3	2390	50.81	11.25	62.06	74.00	-11.94	Vertical

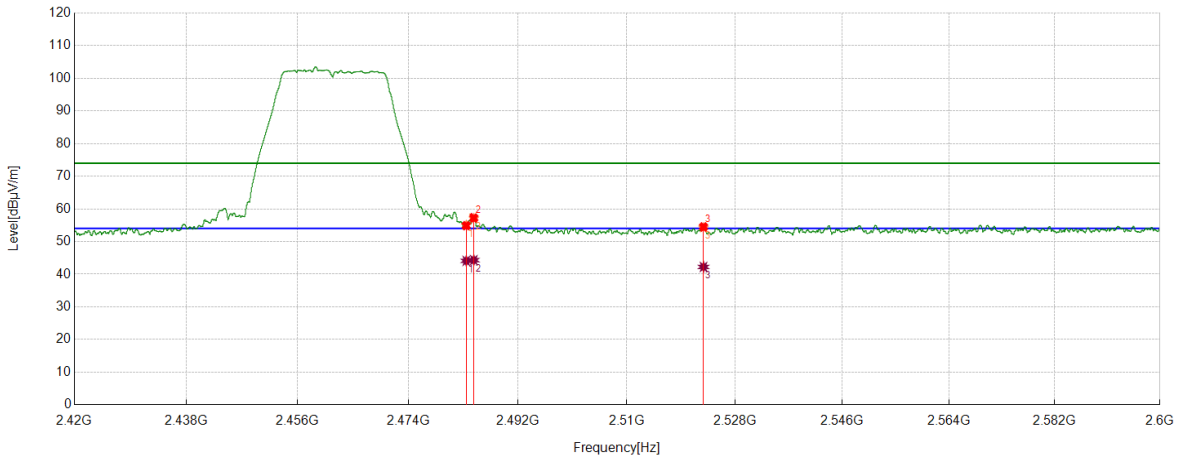
AV Result:

No.	Frequency	Reading Level	Correct Factor	Result	Limit	Margin	Remark
	[MHz]	[dBuV/m]	[dB]	[dBuV/m]	[dBuV/m]	[dB]	
1	2373.603	30.61	11.29	41.90	54.00	-12.10	Vertical
2	2387.3297	36.02	11.27	47.29	54.00	-6.71	Vertical
3	2390	37.08	11.25	48.33	54.00	-5.67	Vertical

- Note: 1. Peak detector: RBW: 1 MHz, VBW: 3 MHz.
 2. Average detector: RBW: 1 MHz, VBW: 1/T MHz(refer to clause 7.1.).
 3. Measurement = Reading Level + Correct Factor.
 4. Only the worst case emission was recorded, if it complies with the limit, the other emissions deemed to comply with the limit.



Test Mode	Channel	Polarization	Verdict
11N HT20 MIMO	HCH	Horizontal	PASS



PK Result:

No.	Frequency	Reading Level	Correct Factor	Result	Limit	Margin	Remark
	[MHz]	[dBuV/m]	[dB]	[dBuV/m]	[dBuV/m]	[dB]	
1	2483.5	43.59	11.28	54.87	74.00	-19.13	Horizontal
2	2484.7406	45.92	11.30	57.22	74.00	-16.78	Horizontal
3	2522.7478	42.82	11.67	54.49	74.00	-19.51	Horizontal

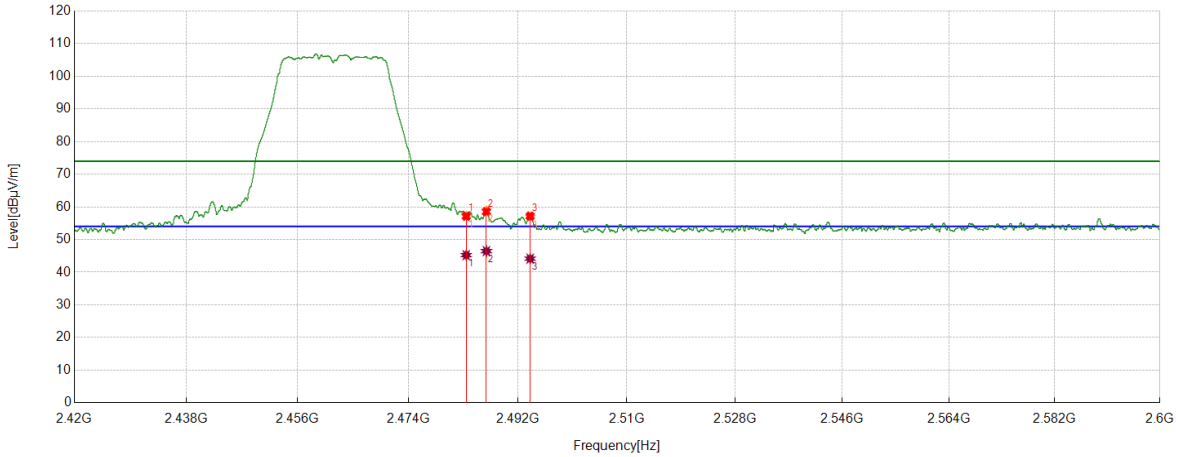
AV Result:

No.	Frequency	Reading Level	Correct Factor	Result	Limit	Margin	Remark
	[MHz]	[dBuV/m]	[dB]	[dBuV/m]	[dBuV/m]	[dB]	
1	2483.5	32.81	11.28	44.09	54.00	-9.91	Horizontal
2	2484.7406	33.02	11.30	44.32	54.00	-9.68	Horizontal
3	2522.7478	30.56	11.67	42.23	54.00	-11.77	Horizontal

- Note: 1. Peak detector: RBW: 1 MHz, VBW: 3 MHz.
 2. Average detector: RBW: 1 MHz, VBW: 1/T MHz(refer to clause 7.1.).
 3. Measurement = Reading Level + Correct Factor.
 4. Only the worst case emission was recorded, if it complies with the limit, the other emissions deemed to comply with the limit.



Test Mode	Channel	Polarization	Verdict
11N HT20 MIMO	HCH	Vertical	PASS



PK Result:

No.	Frequency	Reading Level	Correct Factor	Result	Limit	Margin	Remark
	[MHz]	[dBuV/m]	[dB]	[dBuV/m]	[dBuV/m]	[dB]	
1	2483.5	45.89	11.28	57.17	74.00	-16.83	Vertical
2	2486.8109	47.19	11.34	58.53	74.00	-15.47	Vertical
3	2494.0118	45.76	11.42	57.18	74.00	-16.82	Vertical

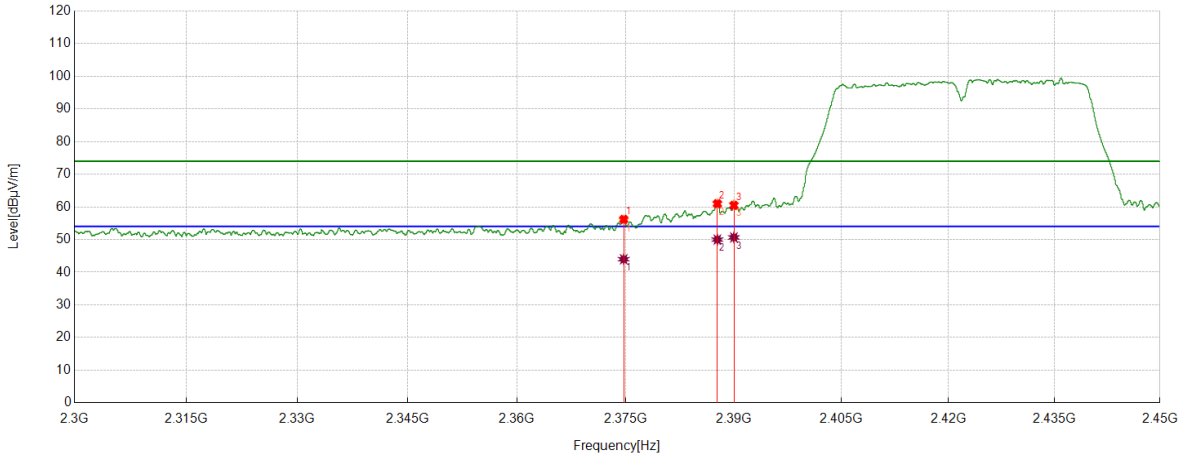
AV Result:

No.	Frequency	Reading Level	Correct Factor	Result	Limit	Margin	Remark
	[MHz]	[dBuV/m]	[dB]	[dBuV/m]	[dBuV/m]	[dB]	
1	2483.5	33.95	11.28	45.23	54.00	-8.77	Vertical
2	2486.8109	35.12	11.34	46.46	54.00	-7.54	Vertical
3	2494.0118	32.73	11.42	44.15	54.00	-9.85	Vertical

- Note: 1. Peak detector: RBW: 1 MHz, VBW: 3 MHz.
 2. Average detector: RBW: 1 MHz, VBW: 1/T MHz(refer to clause 7.1.).
 3. Measurement = Reading Level + Correct Factor.
 4. Only the worst case emission was recorded, if it complies with the limit, the other emissions deemed to comply with the limit.



Test Mode	Channel	Polarization	Verdict
11N HT40 MIMO	LCH	Horizontal	PASS



PK Result:

No.	Frequency	Reading Level	Correct Factor	Result	Limit	Margin	Remark
	[MHz]	[dBuV/m]	[dB]	[dBuV/m]	[dBuV/m]	[dB]	
1	2374.7281	44.87	11.29	56.16	74.00	-17.84	Horizontal
2	2387.7047	49.71	11.27	60.98	74.00	-13.02	Horizontal
3	2390	49.22	11.25	60.47	74.00	-13.53	Horizontal

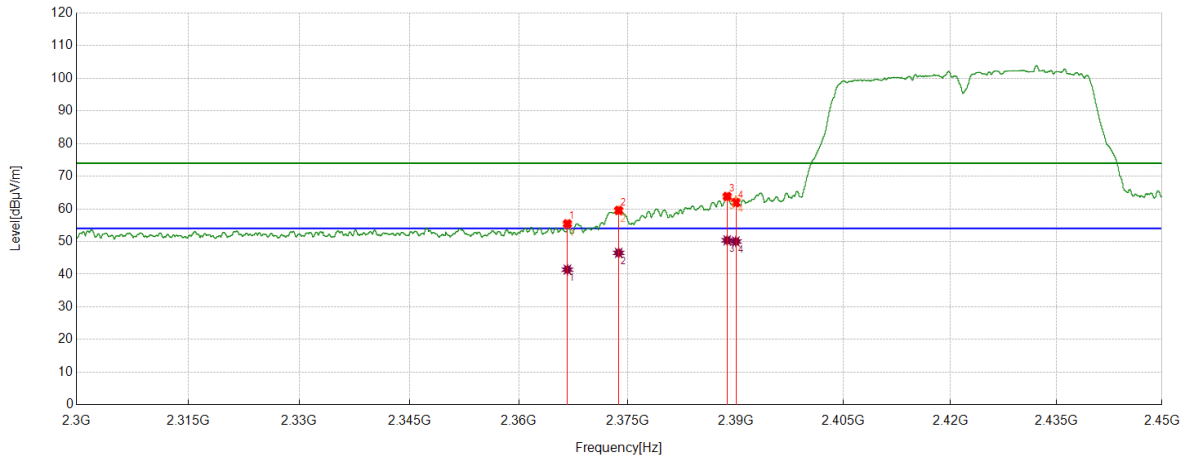
AV Result:

No.	Frequency	Reading Level	Correct Factor	Result	Limit	Margin	Remark
	[MHz]	[dBuV/m]	[dB]	[dBuV/m]	[dBuV/m]	[dB]	
1	2374.7281	32.68	11.29	43.97	54.00	-10.03	Horizontal
2	2387.7047	38.72	11.27	49.99	54.00	-4.01	Horizontal
3	2390	39.40	11.25	50.65	54.00	-3.35	Horizontal

- Note: 1. Peak detector: RBW: 1 MHz, VBW: 3 MHz.
 2. Average detector: RBW: 1 MHz, VBW: 1/T MHz(refer to clause 7.1.).
 3. Measurement = Reading Level + Correct Factor.
 4. Only the worst case emission was recorded, if it complies with the limit, the other emissions deemed to comply with the limit.



Test Mode	Channel	Polarization	Verdict
11N HT40 MIMO	LCH	Vertical	PASS



PK Result:

No.	Frequency	Reading Level	Correct Factor	Result	Limit	Margin	Remark
	[MHz]	[dBuV/m]	[dB]	[dBuV/m]	[dBuV/m]	[dB]	
1	2366.6833	44.23	11.23	55.46	74.00	-18.54	Vertical
2	2373.753	48.25	11.29	59.54	74.00	-14.46	Vertical
3	2388.7923	52.58	11.26	63.84	74.00	-10.16	Vertical
4	2390	50.65	11.25	61.90	74.00	-12.10	Vertical

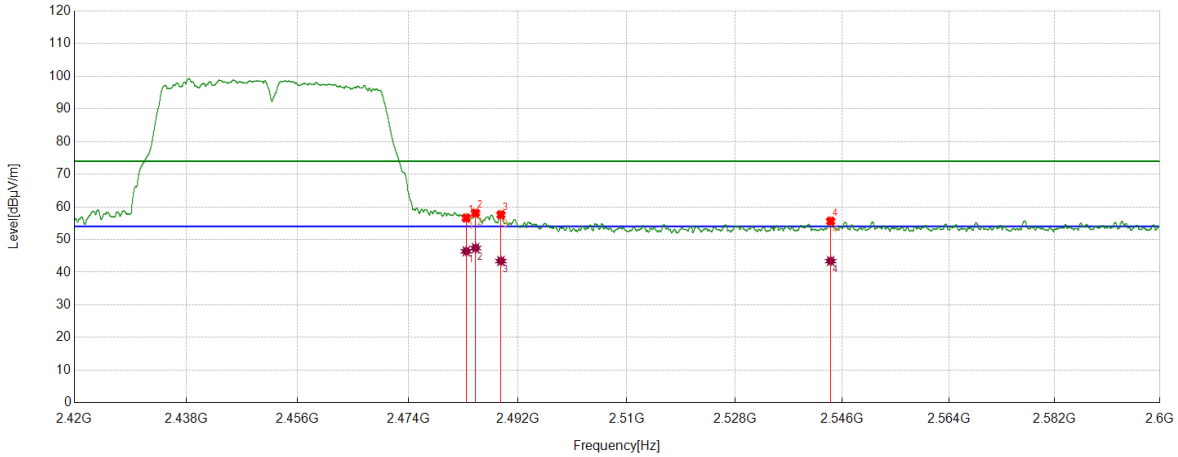
AV Result:

No.	Frequency	Reading Level	Correct Factor	Result	Limit	Margin	Remark
	[MHz]	[dBuV/m]	[dB]	[dBuV/m]	[dBuV/m]	[dB]	
1	2366.6833	30.18	11.23	41.41	54.00	-12.59	Vertical
2	2373.753	35.25	11.29	46.54	54.00	-7.46	Vertical
3	2388.7923	39.13	11.26	50.39	54.00	-3.61	Vertical
4	2390	38.77	11.25	50.02	54.00	-3.98	Vertical

- Note: 1. Peak detector: RBW: 1 MHz, VBW: 3 MHz.
 2. Average detector: RBW: 1 MHz, VBW: 1/T MHz(refer to clause 7.1.).
 3. Measurement = Reading Level + Correct Factor.
 4. Only the worst case emission was recorded, if it complies with the limit, the other emissions deemed to comply with the limit.



Test Mode	Channel	Polarization	Verdict
11N HT40 MIMO	HCH	Horizontal	PASS



PK Result:

No.	Frequency	Reading Level	Correct Factor	Result	Limit	Margin	Remark
	[MHz]	[dBuV/m]	[dB]	[dBuV/m]	[dBuV/m]	[dB]	
1	2483.5	45.33	11.28	56.61	74.00	-17.39	Horizontal
2	2485.0331	46.81	11.31	58.12	74.00	-15.88	Horizontal
3	2489.1962	46.22	11.38	57.60	74.00	-16.40	Horizontal
4	2544.0355	43.80	11.84	55.64	74.00	-18.36	Horizontal

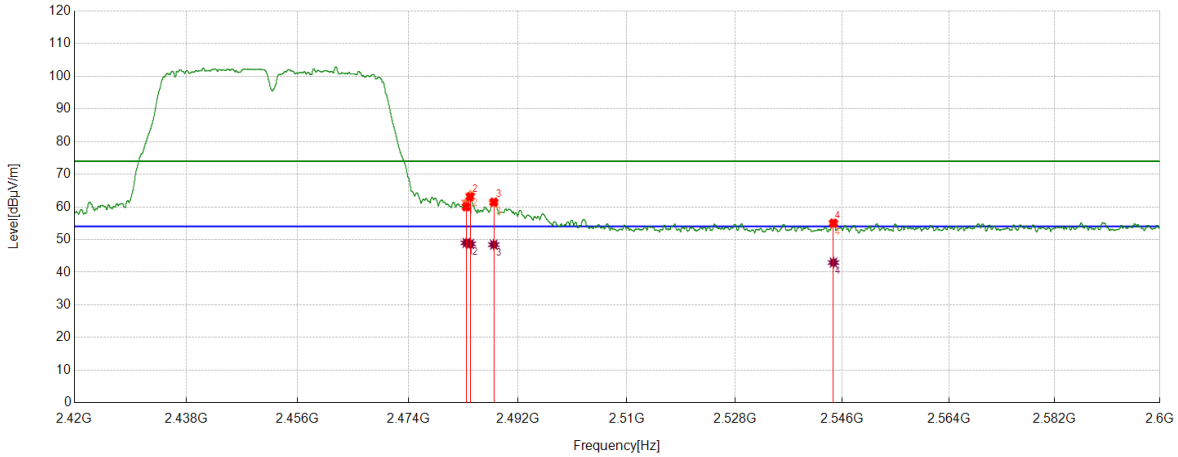
AV Result:

No.	Frequency	Reading Level	Correct Factor	Result	Limit	Margin	Remark
	[MHz]	[dBuV/m]	[dB]	[dBuV/m]	[dBuV/m]	[dB]	
1	2483.5	35.13	11.28	46.41	54.00	-7.59	Horizontal
2	2485.0331	36.08	11.31	47.39	54.00	-6.61	Horizontal
3	2489.1962	32.05	11.38	43.43	54.00	-10.57	Horizontal
4	2544.0355	31.58	11.84	43.42	54.00	-10.58	Horizontal

- Note: 1. Peak detector: RBW: 1 MHz, VBW: 3 MHz.
 2. Average detector: RBW: 1 MHz, VBW: 1/T MHz(refer to clause 7.1.).
 3. Measurement = Reading Level + Correct Factor.
 4. Only the worst case emission was recorded, if it complies with the limit, the other emissions deemed to comply with the limit.



Test Mode	Channel	Polarization	Verdict
11N HT40 MIMO	HCH	Vertical	PASS



PK Result:

No.	Frequency	Reading Level	Correct Factor	Result	Limit	Margin	Remark
	[MHz]	[dBuV/m]	[dB]	[dBuV/m]	[dBuV/m]	[dB]	
1	2483.5	48.74	11.28	60.02	74.00	-13.98	Vertical
2	2484.1555	51.82	11.29	63.11	74.00	-10.89	Vertical
3	2488.026	50.09	11.36	61.45	74.00	-12.55	Vertical
4	2544.5081	43.21	11.83	55.04	74.00	-18.96	Vertical

AV Result:

No.	Frequency	Reading Level	Correct Factor	Result	Limit	Margin	Remark
	[MHz]	[dBuV/m]	[dB]	[dBuV/m]	[dBuV/m]	[dB]	
1	2483.5	37.70	11.28	48.98	54.00	-5.02	Vertical
2	2484.1555	37.39	11.29	48.68	54.00	-5.32	Vertical
3	2488.026	37.08	11.36	48.44	54.00	-5.56	Vertical
4	2544.5081	31.13	11.83	42.96	54.00	-11.04	Vertical

- Note: 1. Peak detector: RBW: 1 MHz, VBW: 3 MHz.
 2. Average detector: RBW: 1 MHz, VBW: 1/T MHz(refer to clause 7.1.).
 3. Measurement = Reading Level + Correct Factor.
 4. Only the worst case emission was recorded, if it complies with the limit, the other emissions deemed to comply with the limit.



8.4. SPURIOUS EMISSIONS

TEST RESULTS TABLE

1) For 1GHz~18GHz

Test Mode	Channel	Puw(dBm)	Verdict
11B	LCH	<Limit	PASS
	MCH	<Limit	PASS
	HCH	<Limit	PASS
11G	LCH	<Limit	PASS
	MCH	<Limit	PASS
	HCH	<Limit	PASS
11N HT20 MIMO	LCH	<Limit	PASS
	MCH	<Limit	PASS
	HCH	<Limit	PASS
11N HT40 MIMO	LCH	<Limit	PASS
	MCH	<Limit	PASS
	HCH	<Limit	PASS

2) For 9kHz~30MHz

Test Mode	Channel	Puw(dBm)	Verdict
11B	MCH	<Limit	PASS

Remark:

1) Through pre-testing all the test modes and test channels, but only the data of the worst case is included in this test report.

3) For 30MHz~1GHz

Test Mode	Channel	Puw(dBm)	Verdict
11B	MCH	<Limit	PASS

Remark:

1) Through pre-testing all the test modes and test channels, but only the data of the worst case is included in this test report.

4) For 18GHz~26.5GHz

Test Mode	Channel	Puw(dBm)	Verdict
11B	MCH	<Limit	PASS

Remark:

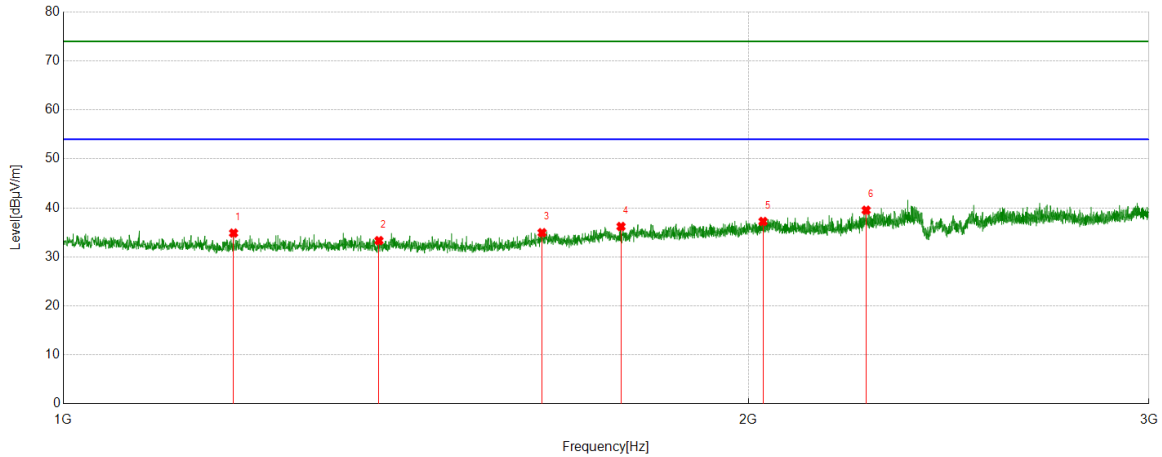
1) Through pre-testing all the test modes and test channels, but only the data of the worst case is included in this test report.



Part 1: 1GHz~3GHz

HARMONICS AND SPURIOUS EMISSIONS

Test Mode	Channel	Polarization	Verdict
11B	LCH	Horizontal	PASS



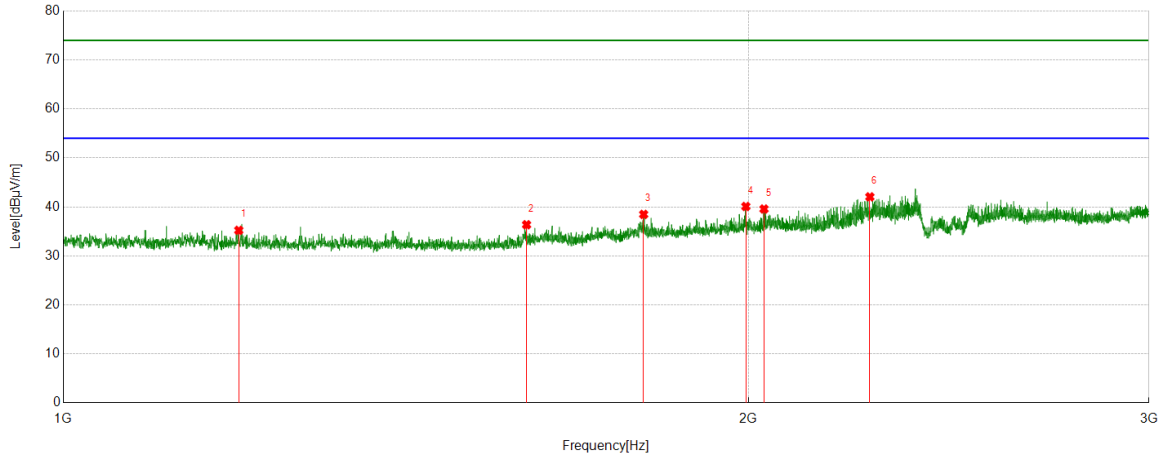
PK Result:

No.	Frequency	Reading Level	Correct Factor	Result	Limit	Margin	Remark
	[MHz]	[dBuV/m]	[dB]	[dBuV/m]	[dBuV/m]	[dB]	
1	1188.0235	41.37	-6.51	34.86	74.00	-39.14	Horizontal
2	1376.297	39.95	-6.63	33.32	74.00	-40.68	Horizontal
3	1623.3279	40.40	-5.47	34.93	74.00	-39.07	Horizontal
4	1758.3448	40.99	-4.79	36.20	74.00	-37.80	Horizontal
5	2030.1288	40.06	-2.83	37.23	74.00	-36.77	Horizontal
6	2253.4067	42.76	-3.24	39.52	74.00	-34.48	Horizontal

- Note: 1. Measurement = Reading Level + Correct Factor.
 2. If Peak Result complies with AV limit, AV Result is deemed to comply with AV limit.
 3. Test setup: RBW: 1 MHz, VBW: 3 MHz, Sweep time: auto.
 4. Peak: Peak detector.
 5. For below 3GHz part, filter losses were only considered in the spurious frequency bands and the authorized band was not corrected for Band Reject Filter losses.
 6. Only the worst case emission was recorded, if it complies with the limit, the other emissions deemed to comply with the limit.



Test Mode	Channel	Polarization	Verdict
11B	LCH	Vertical	PASS



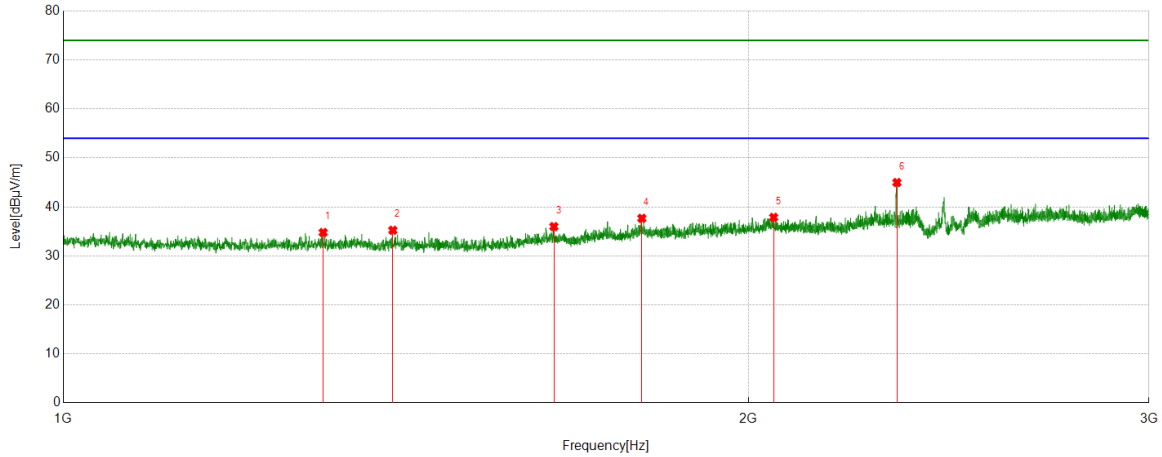
PK Result:

No.	Frequency	Reading Level	Correct Factor	Result	Limit	Margin	Remark
	[MHz]	[dBuV/m]	[dB]	[dBuV/m]	[dBuV/m]	[dB]	
1	1194.2743	41.86	-6.64	35.22	74.00	-38.78	Vertical
2	1598.0748	41.97	-5.61	36.36	74.00	-37.64	Vertical
3	1799.0999	42.69	-4.22	38.47	74.00	-35.53	Vertical
4	1995.1244	43.21	-3.12	40.09	74.00	-33.91	Vertical
5	2032.129	42.33	-2.76	39.57	74.00	-34.43	Vertical
6	2261.9077	45.27	-3.22	42.05	74.00	-31.95	Vertical

- Note: 1. Measurement = Reading Level + Correct Factor.
 2. If Peak Result complies with AV limit, AV Result is deemed to comply with AV limit.
 3. Test setup: RBW: 1 MHz, VBW: 3 MHz, Sweep time: auto.
 4. Peak: Peak detector.
 5. For below 3GHz part, filter losses were only considered in the spurious frequency bands and the authorized band was not corrected for Band Reject Filter losses.
 6. Only the worst case emission was recorded, if it complies with the limit, the other emissions deemed to comply with the limit.



Test Mode	Channel	Polarization	Verdict
11B	MCH	Horizontal	PASS



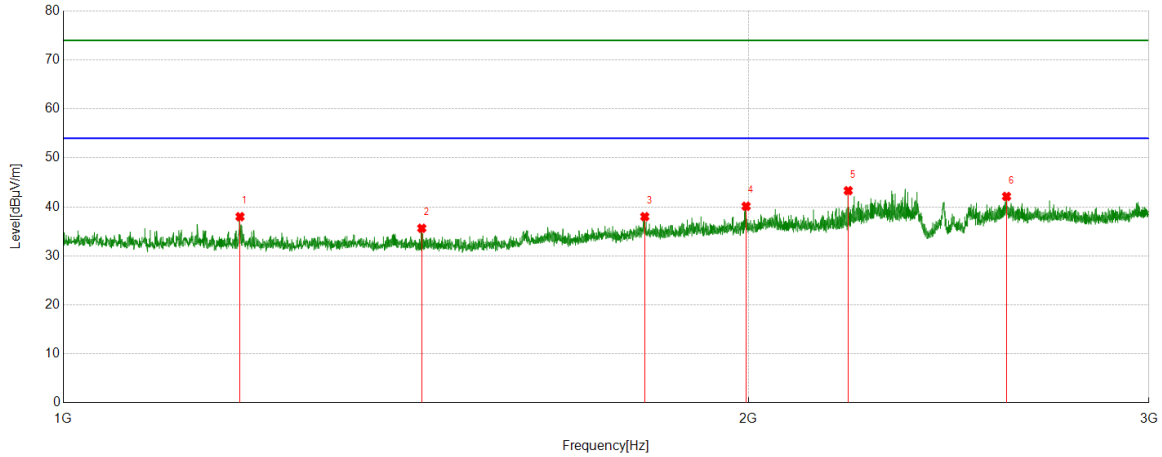
PK Result:

No.	Frequency	Reading Level	Correct Factor	Result	Limit	Margin	Remark
	[MHz]	[dBuV/m]	[dB]	[dBuV/m]	[dBuV/m]	[dB]	
1	1300.7876	40.93	-6.16	34.77	74.00	-39.23	Horizontal
2	1395.7995	41.76	-6.53	35.23	74.00	-38.77	Horizontal
3	1642.8304	41.25	-5.27	35.98	74.00	-38.02	Horizontal
4	1795.8495	41.94	-4.27	37.67	74.00	-36.33	Horizontal
5	2052.1315	40.45	-2.59	37.86	74.00	-36.14	Horizontal
6	2324.6656	48.03	-3.05	44.98	74.00	-29.02	Horizontal

- Note: 1. Measurement = Reading Level + Correct Factor.
 2. If Peak Result complies with AV limit, AV Result is deemed to comply with AV limit.
 3. Test setup: RBW: 1 MHz, VBW: 3 MHz, Sweep time: auto.
 4. Peak: Peak detector.
 5. For below 3GHz part, filter losses were only considered in the spurious frequency bands and the authorized band was not corrected for Band Reject Filter losses.
 6. Only the worst case emission was recorded, if it complies with the limit, the other emissions deemed to comply with the limit.



Test Mode	Channel	Polarization	Verdict
11B	MCH	Vertical	PASS



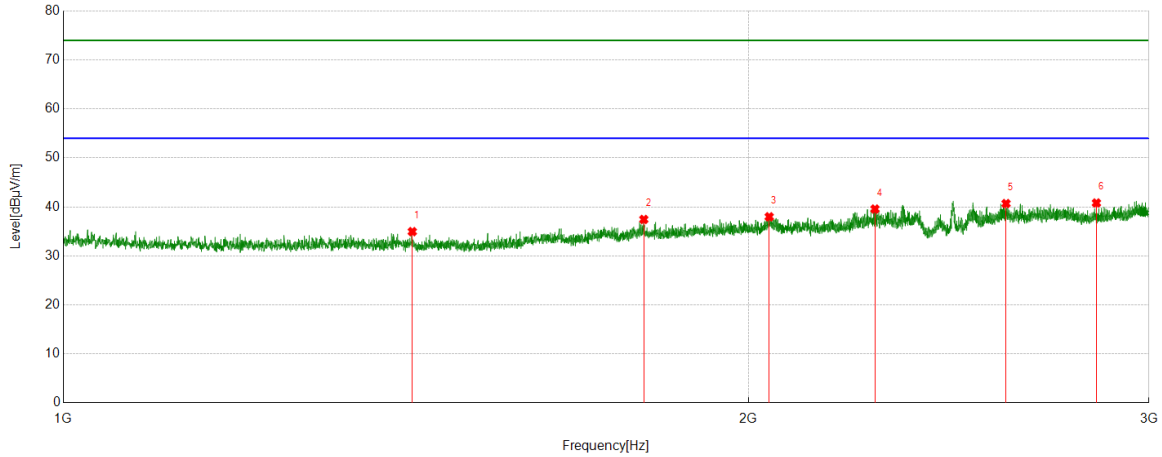
PK Result:

No.	Frequency	Reading Level	Correct Factor	Result	Limit	Margin	Remark
	[MHz]	[dBuV/m]	[dB]	[dBuV/m]	[dBuV/m]	[dB]	
1	1195.7745	44.65	-6.65	38.00	74.00	-36.00	Vertical
2	1437.3047	42.21	-6.57	35.64	74.00	-38.36	Vertical
3	1801.1001	42.24	-4.23	38.01	74.00	-35.99	Vertical
4	1995.6245	43.24	-3.11	40.13	74.00	-33.87	Vertical
5	2212.9016	46.62	-3.31	43.31	74.00	-30.69	Vertical
6	2597.4497	43.96	-1.82	42.14	74.00	-31.86	Vertical

- Note: 1. Measurement = Reading Level + Correct Factor.
 2. If Peak Result complies with AV limit, AV Result is deemed to comply with AV limit.
 3. Test setup: RBW: 1 MHz, VBW: 3 MHz, Sweep time: auto.
 4. Peak: Peak detector.
 5. For below 3GHz part, filter losses were only considered in the spurious frequency bands and the authorized band was not corrected for Band Reject Filter losses.
 6. Only the worst case emission was recorded, if it complies with the limit, the other emissions deemed to comply with the limit.



Test Mode	Channel	Polarization	Verdict
11B	HCH	Horizontal	PASS



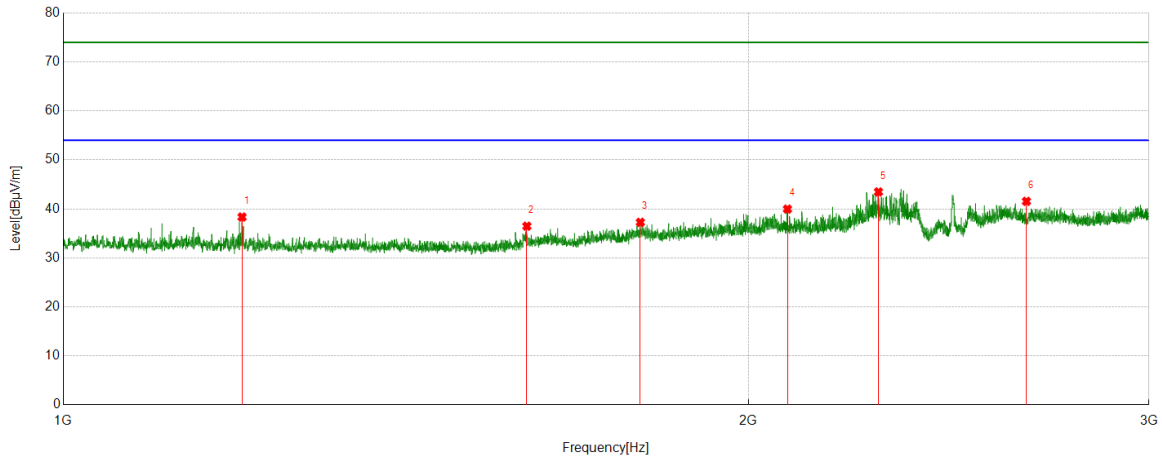
PK Result:

No.	Frequency	Reading Level	Correct Factor	Result	Limit	Margin	Remark
	[MHz]	[dBuV/m]	[dB]	[dBuV/m]	[dBuV/m]	[dB]	
1	1423.5529	41.42	-6.47	34.95	74.00	-39.05	Horizontal
2	1799.3499	41.66	-4.22	37.44	74.00	-36.56	Horizontal
3	2042.8804	40.47	-2.49	37.98	74.00	-36.02	Horizontal
4	2273.6592	42.79	-3.23	39.56	74.00	-34.44	Horizontal
5	2596.1995	42.53	-1.85	40.68	74.00	-33.32	Horizontal
6	2844.7306	41.97	-1.17	40.80	74.00	-33.20	Horizontal

- Note: 1. Measurement = Reading Level + Correct Factor.
 2. If Peak Result complies with AV limit, AV Result is deemed to comply with AV limit.
 3. Test setup: RBW: 1 MHz, VBW: 3 MHz, Sweep time: auto.
 4. Peak: Peak detector.
 5. For below 3GHz part, filter losses were only considered in the spurious frequency bands and the authorized band was not corrected for Band Reject Filter losses.
 6. Only the worst case emission was recorded, if it complies with the limit, the other emissions deemed to comply with the limit.



Test Mode	Channel	Polarization	Verdict
11B	HCH	Vertical	PASS



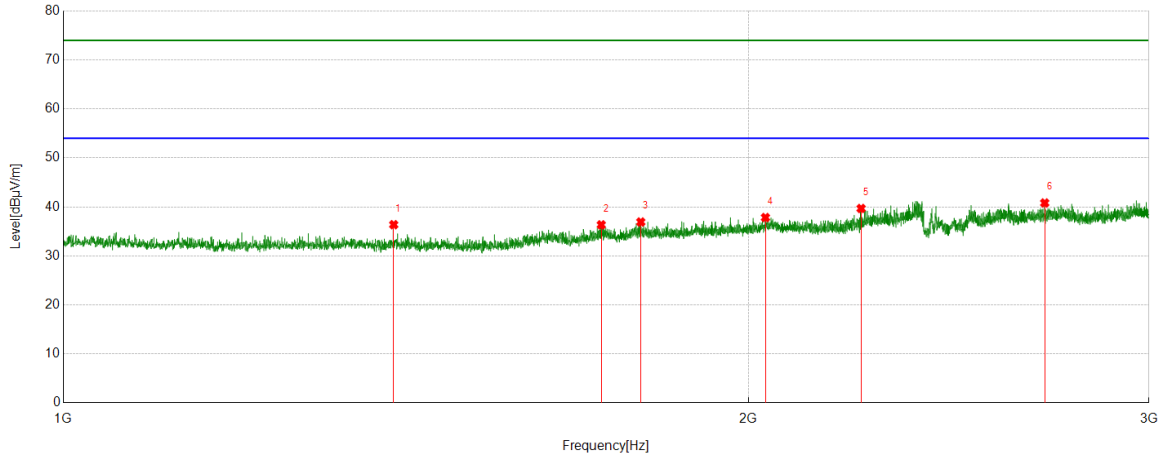
PK Result:

No.	Frequency	Reading Level	Correct Factor	Result	Limit	Margin	Remark
	[MHz]	[dBuV/m]	[dB]	[dBuV/m]	[dBuV/m]	[dB]	
1	1198.2748	45.01	-6.67	38.34	74.00	-35.66	Vertical
2	1598.5748	42.06	-5.59	36.47	74.00	-37.53	Vertical
3	1793.0991	41.57	-4.31	37.26	74.00	-36.74	Vertical
4	2080.8851	42.96	-3.00	39.96	74.00	-34.04	Vertical
5	2281.6602	46.66	-3.19	43.47	74.00	-30.53	Vertical
6	2650.2063	43.45	-1.91	41.54	74.00	-32.46	Vertical

- Note: 1. Measurement = Reading Level + Correct Factor.
 2. If Peak Result complies with AV limit, AV Result is deemed to comply with AV limit.
 3. Test setup: RBW: 1 MHz, VBW: 3 MHz, Sweep time: auto.
 4. Peak: Peak detector.
 5. For below 3GHz part, filter losses were only considered in the spurious frequency bands and the authorized band was not corrected for Band Reject Filter losses.
 6. Only the worst case emission was recorded, if it complies with the limit, the other emissions deemed to comply with the limit.



Test Mode	Channel	Polarization	Verdict
11G	LCH	Horizontal	PASS



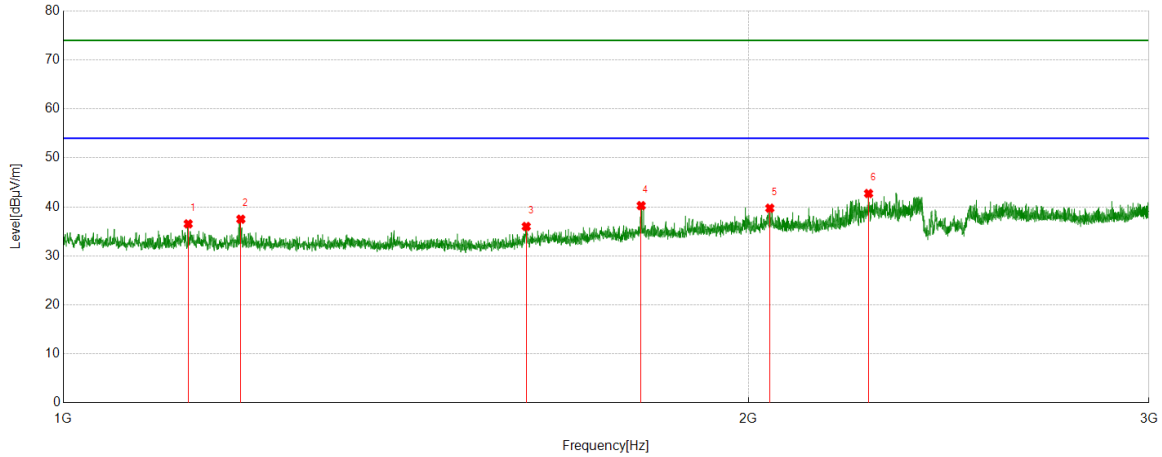
PK Result:

No.	Frequency	Reading Level	Correct Factor	Result	Limit	Margin	Remark
	[MHz]	[dBuV/m]	[dB]	[dBuV/m]	[dBuV/m]	[dB]	
1	1397.0496	42.86	-6.49	36.37	74.00	-37.63	Horizontal
2	1723.5904	41.22	-4.88	36.34	74.00	-37.66	Horizontal
3	1793.8492	41.22	-4.30	36.92	74.00	-37.08	Horizontal
4	2035.1294	40.48	-2.65	37.83	74.00	-36.17	Horizontal
5	2241.9052	42.95	-3.27	39.68	74.00	-34.32	Horizontal
6	2699.7125	42.23	-1.43	40.80	74.00	-33.20	Horizontal

- Note: 1. Measurement = Reading Level + Correct Factor.
 2. If Peak Result complies with AV limit, AV Result is deemed to comply with AV limit.
 3. Test setup: RBW: 1 MHz, VBW: 3 MHz, Sweep time: auto.
 4. Peak: Peak detector.
 5. For below 3GHz part, filter losses were only considered in the spurious frequency bands and the authorized band was not corrected for Band Reject Filter losses.
 6. Only the worst case emission was recorded, if it complies with the limit, the other emissions deemed to comply with the limit.



Test Mode	Channel	Polarization	Verdict
11G	LCH	Vertical	PASS



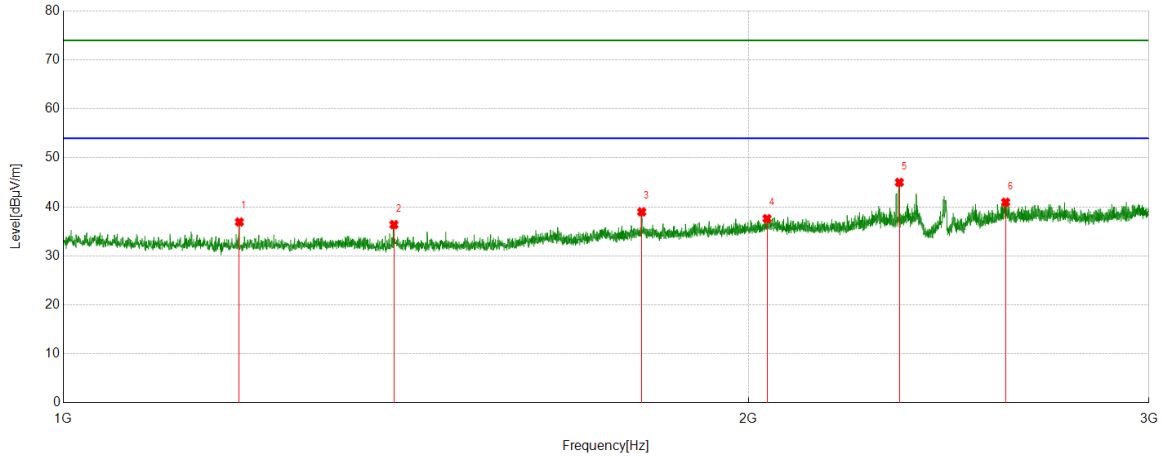
PK Result:

No.	Frequency	Reading Level	Correct Factor	Result	Limit	Margin	Remark
	[MHz]	[dBuV/m]	[dB]	[dBuV/m]	[dBuV/m]	[dB]	
1	1134.7668	42.58	-6.05	36.53	74.00	-37.47	Vertical
2	1196.7746	44.15	-6.66	37.49	74.00	-36.51	Vertical
3	1597.5747	41.63	-5.63	36.00	74.00	-38.00	Vertical
4	1794.5993	44.54	-4.29	40.25	74.00	-33.75	Vertical
5	2044.1305	42.22	-2.49	39.73	74.00	-34.27	Vertical
6	2258.9074	45.95	-3.22	42.73	74.00	-31.27	Vertical

- Note: 1. Measurement = Reading Level + Correct Factor.
 2. If Peak Result complies with AV limit, AV Result is deemed to comply with AV limit.
 3. Test setup: RBW: 1 MHz, VBW: 3 MHz, Sweep time: auto.
 4. Peak: Peak detector.
 5. For below 3GHz part, filter losses were only considered in the spurious frequency bands and the authorized band was not corrected for Band Reject Filter losses.
 6. Only the worst case emission was recorded, if it complies with the limit, the other emissions deemed to comply with the limit.



Test Mode	Channel	Polarization	Verdict
11G	MCH	Horizontal	PASS



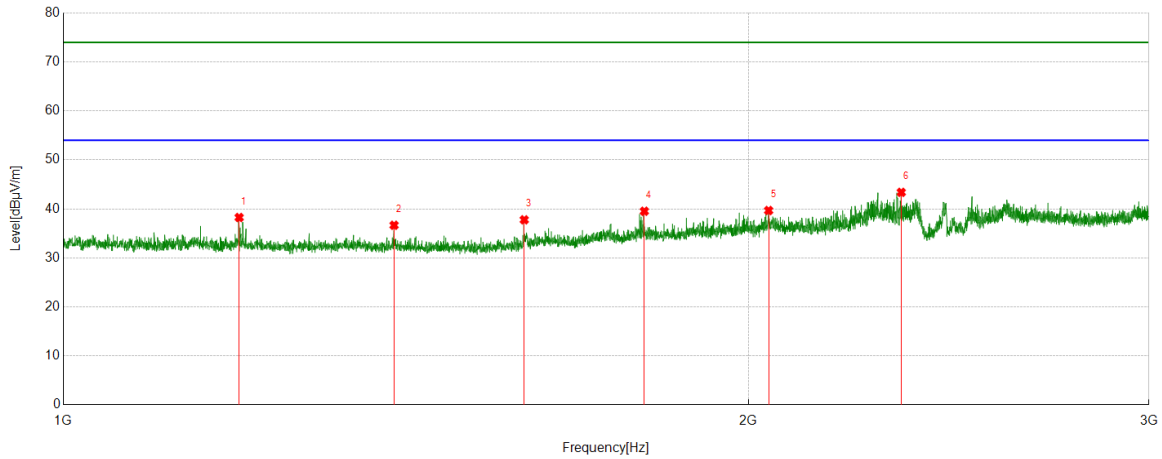
PK Result:

No.	Frequency	Reading Level	Correct Factor	Result	Limit	Margin	Remark
	[MHz]	[dBuV/m]	[dB]	[dBuV/m]	[dBuV/m]	[dB]	
1	1195.0244	43.57	-6.65	36.92	74.00	-37.08	Horizontal
2	1397.2997	42.86	-6.48	36.38	74.00	-37.62	Horizontal
3	1795.5994	43.25	-4.27	38.98	74.00	-35.02	Horizontal
4	2038.3798	40.14	-2.53	37.61	74.00	-36.39	Horizontal
5	2330.4163	48.15	-3.14	45.01	74.00	-28.99	Horizontal
6	2594.9494	42.84	-1.88	40.96	74.00	-33.04	Horizontal

- Note: 1. Measurement = Reading Level + Correct Factor.
 2. If Peak Result complies with AV limit, AV Result is deemed to comply with AV limit.
 3. Test setup: RBW: 1 MHz, VBW: 3 MHz, Sweep time: auto.
 4. Peak: Peak detector.
 5. For below 3GHz part, filter losses were only considered in the spurious frequency bands and the authorized band was not corrected for Band Reject Filter losses.
 6. Only the worst case emission was recorded, if it complies with the limit, the other emissions deemed to comply with the limit.



Test Mode	Channel	Polarization	Verdict
11G	MCH	Vertical	PASS



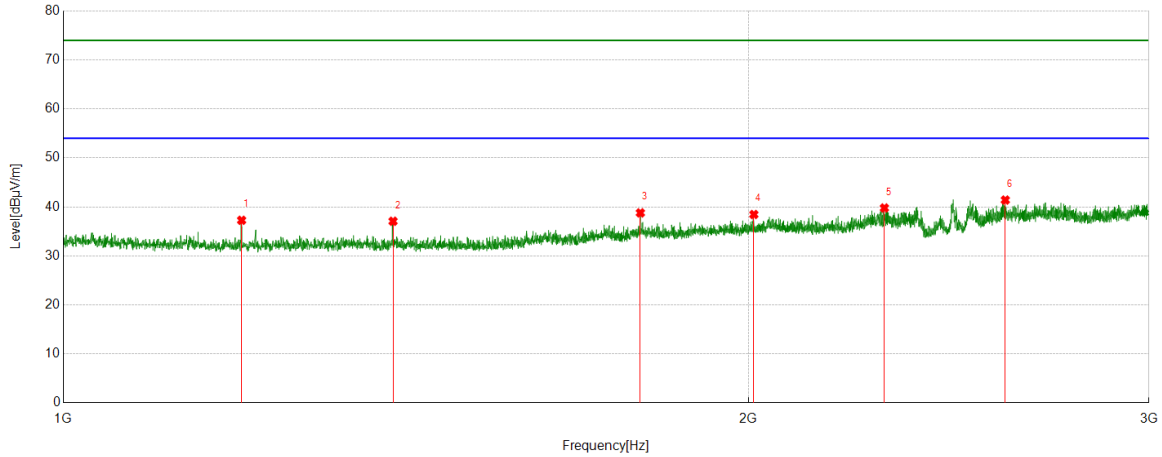
PK Result:

No.	Frequency	Reading Level	Correct Factor	Result	Limit	Margin	Remark
	[MHz]	[dBuV/m]	[dB]	[dBuV/m]	[dBuV/m]	[dB]	
1	1194.7743	44.89	-6.64	38.25	74.00	-35.75	Vertical
2	1397.5497	43.13	-6.47	36.66	74.00	-37.34	Vertical
3	1594.3243	43.52	-5.75	37.77	74.00	-36.23	Vertical
4	1800.35	43.73	-4.21	39.52	74.00	-34.48	Vertical
5	2041.6302	42.15	-2.48	39.67	74.00	-34.33	Vertical
6	2334.9169	46.51	-3.13	43.38	74.00	-30.62	Vertical

- Note: 1. Measurement = Reading Level + Correct Factor.
 2. If Peak Result complies with AV limit, AV Result is deemed to comply with AV limit.
 3. Test setup: RBW: 1 MHz, VBW: 3 MHz, Sweep time: auto.
 4. Peak: Peak detector.
 5. For below 3GHz part, filter losses were only considered in the spurious frequency bands and the authorized band was not corrected for Band Reject Filter losses.
 6. Only the worst case emission was recorded, if it complies with the limit, the other emissions deemed to comply with the limit.



Test Mode	Channel	Polarization	Verdict
11G	HCH	Horizontal	PASS



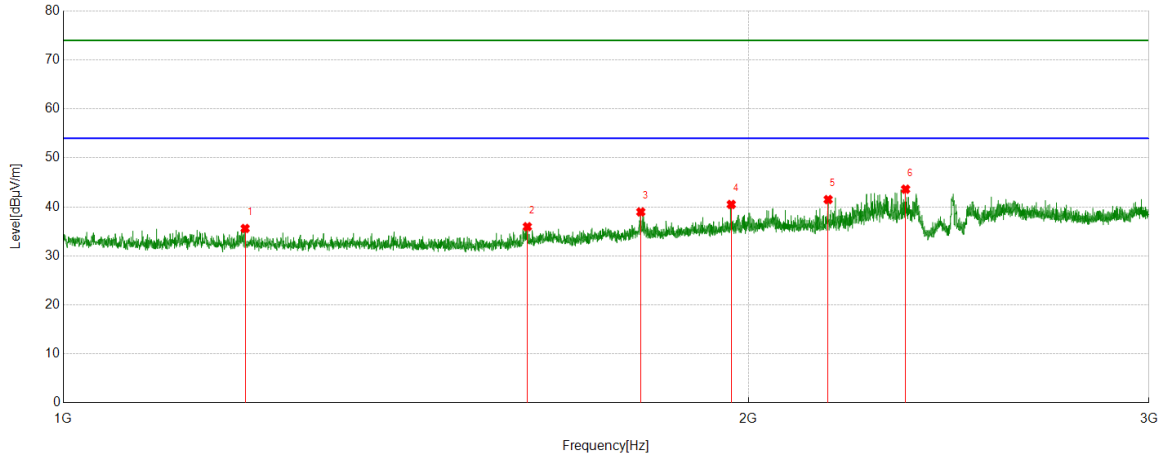
PK Result:

No.	Frequency	Reading Level	Correct Factor	Result	Limit	Margin	Remark
	[MHz]	[dBuV/m]	[dB]	[dBuV/m]	[dBuV/m]	[dB]	
1	1197.7747	43.94	-6.67	37.27	74.00	-36.73	Horizontal
2	1396.0495	43.59	-6.52	37.07	74.00	-36.93	Horizontal
3	1793.0991	43.09	-4.31	38.78	74.00	-35.22	Horizontal
4	2011.3764	41.39	-2.94	38.45	74.00	-35.55	Horizontal
5	2295.4119	42.90	-3.12	39.78	74.00	-34.22	Horizontal
6	2594.1993	43.30	-1.90	41.40	74.00	-32.60	Horizontal

- Note: 1. Measurement = Reading Level + Correct Factor.
 2. If Peak Result complies with AV limit, AV Result is deemed to comply with AV limit.
 3. Test setup: RBW: 1 MHz, VBW: 3 MHz, Sweep time: auto.
 4. Peak: Peak detector.
 5. For below 3GHz part, filter losses were only considered in the spurious frequency bands and the authorized band was not corrected for Band Reject Filter losses.
 6. Only the worst case emission was recorded, if it complies with the limit, the other emissions deemed to comply with the limit.



Test Mode	Channel	Polarization	Verdict
11G	HCH	Vertical	PASS



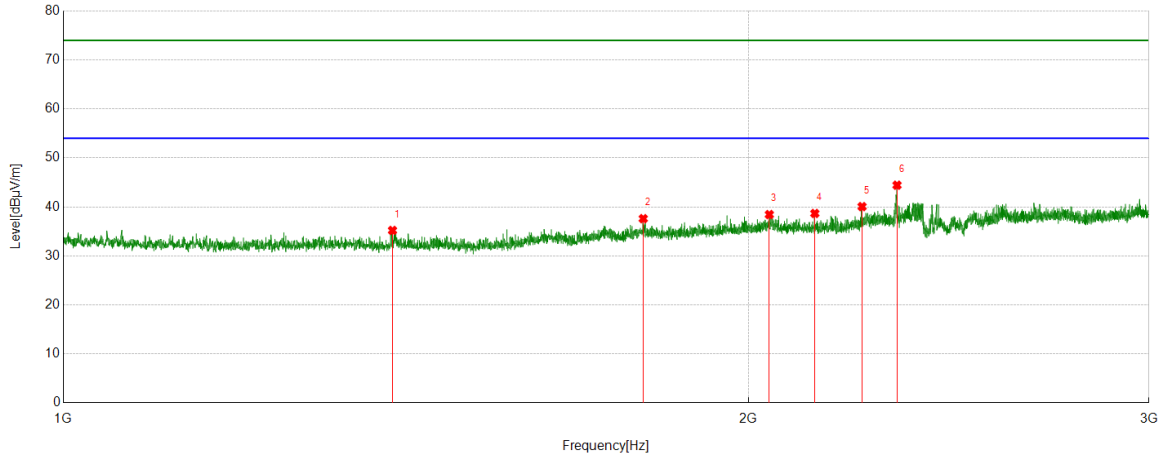
PK Result:

No.	Frequency	Reading Level	Correct Factor	Result	Limit	Margin	Remark
	[MHz]	[dBuV/m]	[dB]	[dBuV/m]	[dBuV/m]	[dB]	
1	1202.0253	42.21	-6.62	35.59	74.00	-38.41	Vertical
2	1599.3249	41.52	-5.56	35.96	74.00	-38.04	Vertical
3	1793.8492	43.27	-4.30	38.97	74.00	-35.03	Vertical
4	1965.8707	43.93	-3.43	40.50	74.00	-33.50	Vertical
5	2168.396	44.70	-3.20	41.50	74.00	-32.50	Vertical
6	2345.1681	46.71	-3.10	43.61	74.00	-30.39	Vertical

- Note: 1. Measurement = Reading Level + Correct Factor.
 2. If Peak Result complies with AV limit, AV Result is deemed to comply with AV limit.
 3. Test setup: RBW: 1 MHz, VBW: 3 MHz, Sweep time: auto.
 4. Peak: Peak detector.
 5. For below 3GHz part, filter losses were only considered in the spurious frequency bands and the authorized band was not corrected for Band Reject Filter losses.
 6. Only the worst case emission was recorded, if it complies with the limit, the other emissions deemed to comply with the limit.



Test Mode	Channel	Polarization	Verdict
11N HT20 MIMO	LCH	Horizontal	PASS



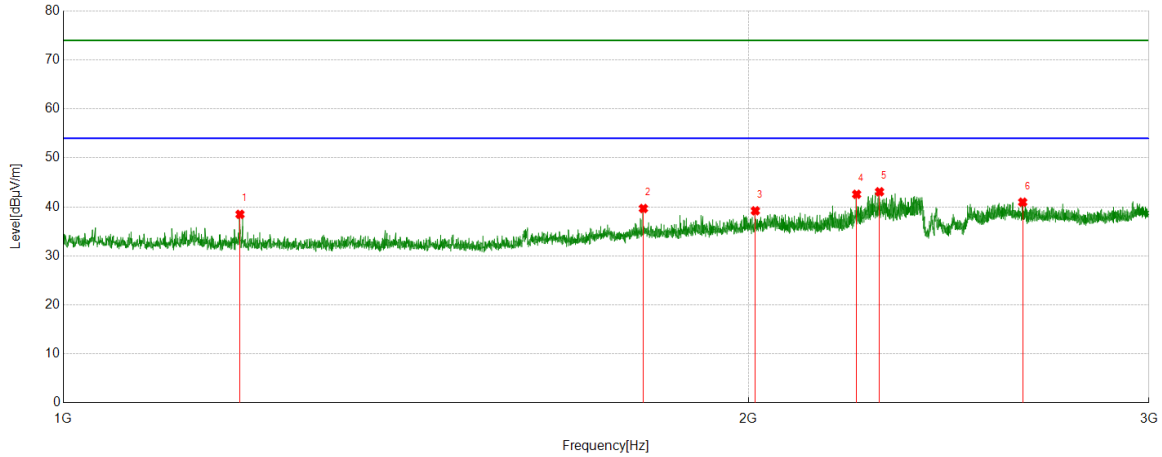
PK Result:

No.	Frequency	Reading Level	Correct Factor	Result	Limit	Margin	Remark
	[MHz]	[dBuV/m]	[dB]	[dBuV/m]	[dBuV/m]	[dB]	
1	1395.2994	41.75	-6.55	35.20	74.00	-38.80	Horizontal
2	1798.3498	41.83	-4.23	37.60	74.00	-36.40	Horizontal
3	2043.1304	40.93	-2.49	38.44	74.00	-35.56	Horizontal
4	2139.3924	41.66	-3.00	38.66	74.00	-35.34	Horizontal
5	2244.1555	43.32	-3.26	40.06	74.00	-33.94	Horizontal
6	2324.9156	47.48	-3.05	44.43	74.00	-29.57	Horizontal

- Note: 1. Measurement = Reading Level + Correct Factor.
 2. If Peak Result complies with AV limit, AV Result is deemed to comply with AV limit.
 3. Test setup: RBW: 1 MHz, VBW: 3 MHz, Sweep time: auto.
 4. Peak: Peak detector.
 5. For below 3GHz part, filter losses were only considered in the spurious frequency bands and the authorized band was not corrected for Band Reject Filter losses.
 6. Only the worst case emission was recorded, if it complies with the limit, the other emissions deemed to comply with the limit.



Test Mode	Channel	Polarization	Verdict
11N HT20 MIMO	LCH	Vertical	PASS



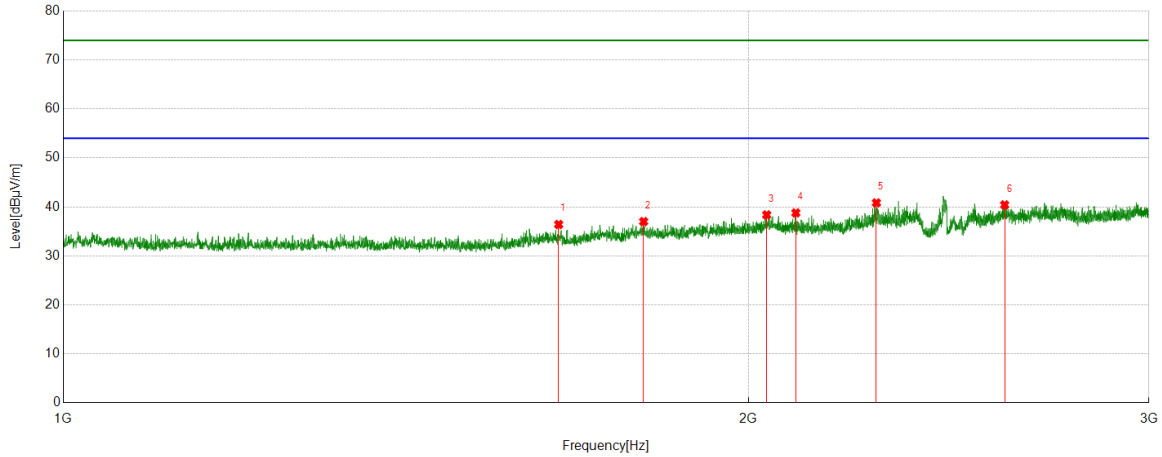
PK Result:

No.	Frequency	Reading Level	Correct Factor	Result	Limit	Margin	Remark
	[MHz]	[dBuV/m]	[dB]	[dBuV/m]	[dBuV/m]	[dB]	
1	1195.7745	45.13	-6.65	38.48	74.00	-35.52	Vertical
2	1798.5998	43.90	-4.23	39.67	74.00	-34.33	Vertical
3	2014.3768	42.13	-2.93	39.20	74.00	-34.80	Vertical
4	2231.904	45.77	-3.20	42.57	74.00	-31.43	Vertical
5	2284.1605	46.26	-3.18	43.08	74.00	-30.92	Vertical
6	2640.205	42.86	-1.90	40.96	74.00	-33.04	Vertical

- Note: 1. Measurement = Reading Level + Correct Factor.
 2. If Peak Result complies with AV limit, AV Result is deemed to comply with AV limit.
 3. Test setup: RBW: 1 MHz, VBW: 3 MHz, Sweep time: auto.
 4. Peak: Peak detector.
 5. For below 3GHz part, filter losses were only considered in the spurious frequency bands and the authorized band was not corrected for Band Reject Filter losses.
 6. Only the worst case emission was recorded, if it complies with the limit, the other emissions deemed to comply with the limit.



Test Mode	Channel	Polarization	Verdict
11N HT20 MIMO	MCH	Horizontal	PASS



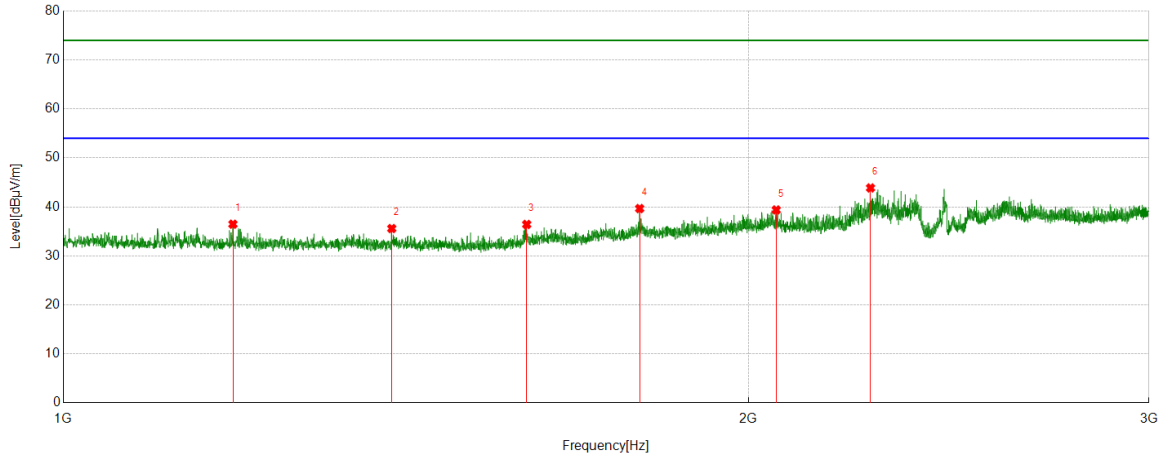
PK Result:

No.	Frequency	Reading Level	Correct Factor	Result	Limit	Margin	Remark
	[MHz]	[dBuV/m]	[dB]	[dBuV/m]	[dBuV/m]	[dB]	
1	1650.8314	41.49	-5.08	36.41	74.00	-37.59	Horizontal
2	1799.0999	41.23	-4.22	37.01	74.00	-36.99	Horizontal
3	2037.6297	40.93	-2.56	38.37	74.00	-35.63	Horizontal
4	2098.6373	41.71	-2.93	38.78	74.00	-35.22	Horizontal
5	2276.9096	44.04	-3.21	40.83	74.00	-33.17	Horizontal
6	2592.4491	42.36	-1.95	40.41	74.00	-33.59	Horizontal

- Note: 1. Measurement = Reading Level + Correct Factor.
 2. If Peak Result complies with AV limit, AV Result is deemed to comply with AV limit.
 3. Test setup: RBW: 1 MHz, VBW: 3 MHz, Sweep time: auto.
 4. Peak: Peak detector.
 5. For below 3GHz part, filter losses were only considered in the spurious frequency bands and the authorized band was not corrected for Band Reject Filter losses.
 6. Only the worst case emission was recorded, if it complies with the limit, the other emissions deemed to comply with the limit.



Test Mode	Channel	Polarization	Verdict
11N HT20 MIMO	MCH	Vertical	PASS



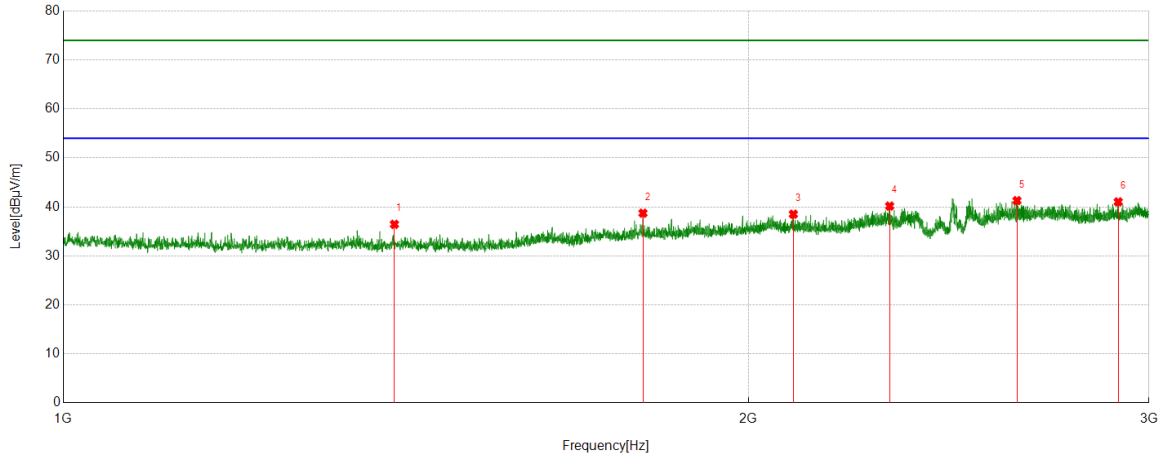
PK Result:

No.	Frequency	Reading Level	Correct Factor	Result	Limit	Margin	Remark
	[MHz]	[dBuV/m]	[dB]	[dBuV/m]	[dBuV/m]	[dB]	
1	1187.2734	42.95	-6.48	36.47	74.00	-37.53	Vertical
2	1394.2993	42.17	-6.59	35.58	74.00	-38.42	Vertical
3	1598.3248	42.02	-5.60	36.42	74.00	-37.58	Vertical
4	1791.849	43.99	-4.33	39.66	74.00	-34.34	Vertical
5	2057.3822	42.13	-2.75	39.38	74.00	-34.62	Vertical
6	2263.4079	47.10	-3.23	43.87	74.00	-30.13	Vertical

- Note: 1. Measurement = Reading Level + Correct Factor.
 2. If Peak Result complies with AV limit, AV Result is deemed to comply with AV limit.
 3. Test setup: RBW: 1 MHz, VBW: 3 MHz, Sweep time: auto.
 4. Peak: Peak detector.
 5. For below 3GHz part, filter losses were only considered in the spurious frequency bands and the authorized band was not corrected for Band Reject Filter losses.
 6. Only the worst case emission was recorded, if it complies with the limit, the other emissions deemed to comply with the limit.



Test Mode	Channel	Polarization	Verdict
11N HT20 MIMO	HCH	Horizontal	PASS



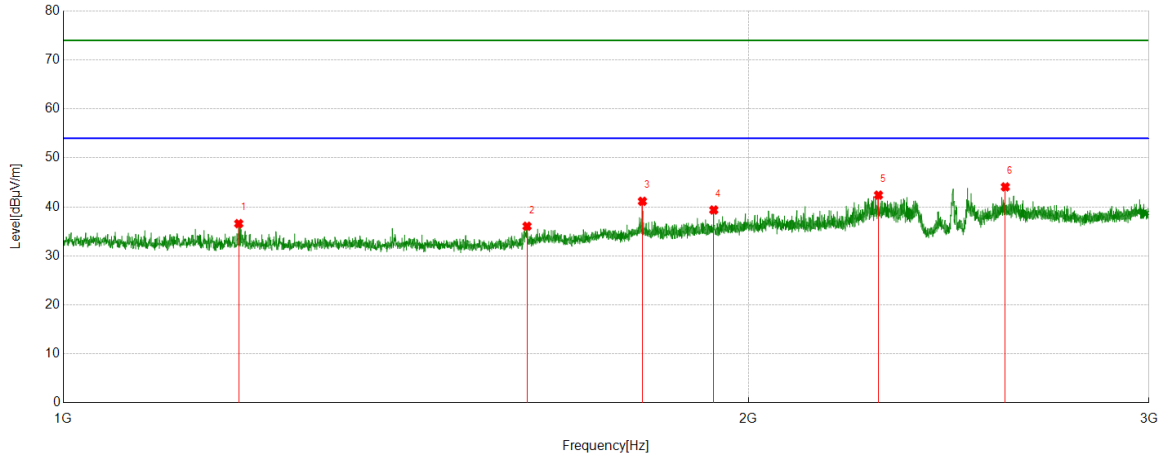
PK Result:

No.	Frequency	Reading Level	Correct Factor	Result	Limit	Margin	Remark
	[MHz]	[dBuV/m]	[dB]	[dBuV/m]	[dBuV/m]	[dB]	
1	1398.0498	42.89	-6.45	36.44	74.00	-37.56	Horizontal
2	1797.8497	42.96	-4.24	38.72	74.00	-35.28	Horizontal
3	2093.3867	41.47	-2.96	38.51	74.00	-35.49	Horizontal
4	2307.6635	43.20	-3.03	40.17	74.00	-33.83	Horizontal
5	2624.9531	42.90	-1.62	41.28	74.00	-32.72	Horizontal
6	2908.2385	41.79	-0.76	41.03	74.00	-32.97	Horizontal

- Note: 1. Measurement = Reading Level + Correct Factor.
 2. If Peak Result complies with AV limit, AV Result is deemed to comply with AV limit.
 3. Test setup: RBW: 1 MHz, VBW: 3 MHz, Sweep time: auto.
 4. Peak: Peak detector.
 5. For below 3GHz part, filter losses were only considered in the spurious frequency bands and the authorized band was not corrected for Band Reject Filter losses.
 6. Only the worst case emission was recorded, if it complies with the limit, the other emissions deemed to comply with the limit.



Test Mode	Channel	Polarization	Verdict
11N HT20 MIMO	HCH	Vertical	PASS



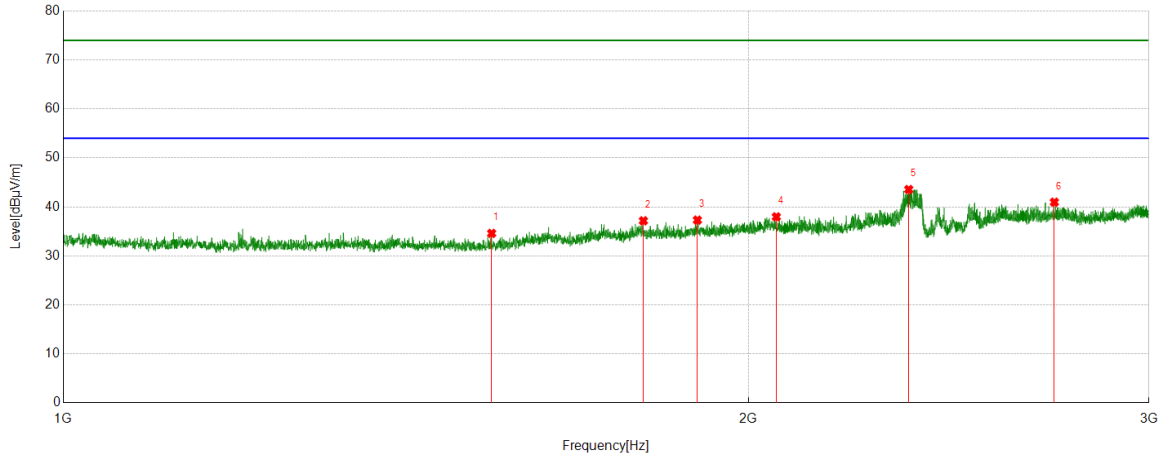
PK Result:

No.	Frequency	Reading Level	Correct Factor	Result	Limit	Margin	Remark
	[MHz]	[dBuV/m]	[dB]	[dBuV/m]	[dBuV/m]	[dB]	
1	1194.2743	43.22	-6.64	36.58	74.00	-37.42	Vertical
2	1598.8249	41.63	-5.58	36.05	74.00	-37.95	Vertical
3	1796.8496	45.39	-4.25	41.14	74.00	-32.86	Vertical
4	1931.3664	42.70	-3.33	39.37	74.00	-34.63	Vertical
5	2281.6602	45.59	-3.19	42.40	74.00	-31.60	Vertical
6	2594.1993	45.98	-1.90	44.08	74.00	-29.92	Vertical

- Note: 1. Measurement = Reading Level + Correct Factor.
 2. If Peak Result complies with AV limit, AV Result is deemed to comply with AV limit.
 3. Test setup: RBW: 1 MHz, VBW: 3 MHz, Sweep time: auto.
 4. Peak: Peak detector.
 5. For below 3GHz part, filter losses were only considered in the spurious frequency bands and the authorized band was not corrected for Band Reject Filter losses.
 6. Only the worst case emission was recorded, if it complies with the limit, the other emissions deemed to comply with the limit.



Test Mode	Channel	Polarization	Verdict
11N HT40 MIMO	LCH	Horizontal	PASS



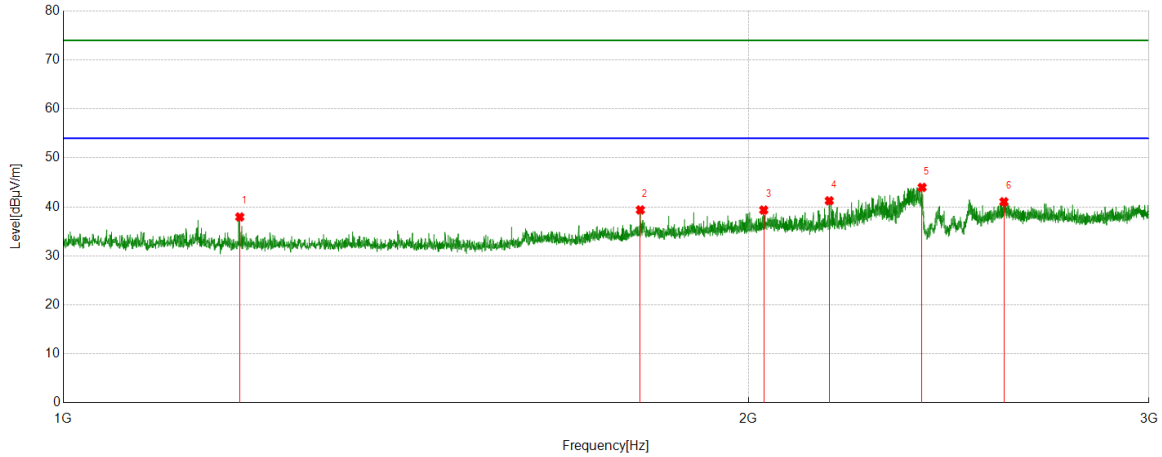
PK Result:

No.	Frequency	Reading Level	Correct Factor	Result	Limit	Margin	Remark
	[MHz]	[dBuV/m]	[dB]	[dBuV/m]	[dBuV/m]	[dB]	
1	1542.5678	41.21	-6.61	34.60	74.00	-39.40	Horizontal
2	1798.5998	41.40	-4.23	37.17	74.00	-36.83	Horizontal
3	1899.6125	41.09	-3.78	37.31	74.00	-36.69	Horizontal
4	2057.6322	40.73	-2.76	37.97	74.00	-36.03	Horizontal
5	2352.6691	46.54	-2.99	43.55	74.00	-30.45	Horizontal
6	2726.2158	42.31	-1.35	40.96	74.00	-33.04	Horizontal

- Note: 1. Measurement = Reading Level + Correct Factor.
 2. If Peak Result complies with AV limit, AV Result is deemed to comply with AV limit.
 3. Test setup: RBW: 1 MHz, VBW: 3 MHz, Sweep time: auto.
 4. Peak: Peak detector.
 5. For below 3GHz part, filter losses were only considered in the spurious frequency bands and the authorized band was not corrected for Band Reject Filter losses.
 6. Only the worst case emission was recorded, if it complies with the limit, the other emissions deemed to comply with the limit.



Test Mode	Channel	Polarization	Verdict
11N HT40 MIMO	LCH	Vertical	PASS



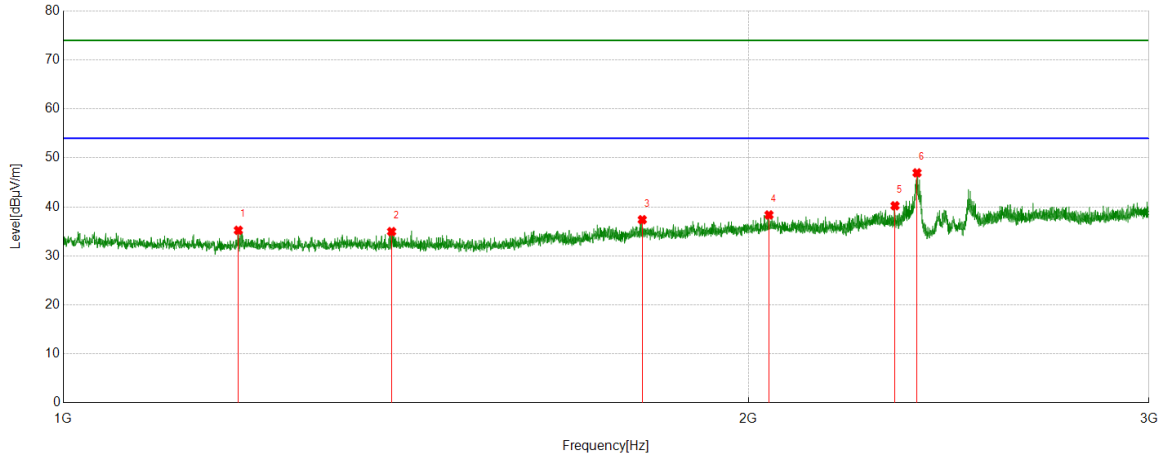
PK Result:

No.	Frequency	Reading Level	Correct Factor	Result	Limit	Margin	Remark
	[MHz]	[dBuV/m]	[dB]	[dBuV/m]	[dBuV/m]	[dB]	
1	1195.5244	44.59	-6.65	37.94	74.00	-36.06	Vertical
2	1793.0991	43.69	-4.31	39.38	74.00	-34.62	Vertical
3	2031.629	42.13	-2.77	39.36	74.00	-34.64	Vertical
4	2170.8964	44.44	-3.19	41.25	74.00	-32.75	Vertical
5	2384.6731	46.51	-2.53	43.98	74.00	-30.02	Vertical
6	2590.6988	43.04	-1.99	41.05	74.00	-32.95	Vertical

- Note: 1. Measurement = Reading Level + Correct Factor.
 2. If Peak Result complies with AV limit, AV Result is deemed to comply with AV limit.
 3. Test setup: RBW: 1 MHz, VBW: 3 MHz, Sweep time: auto.
 4. Peak: Peak detector.
 5. For below 3GHz part, filter losses were only considered in the spurious frequency bands and the authorized band was not corrected for Band Reject Filter losses.
 6. Only the worst case emission was recorded, if it complies with the limit, the other emissions deemed to comply with the limit.



Test Mode	Channel	Polarization	Verdict
11N HT40 MIMO	MCH	Horizontal	PASS



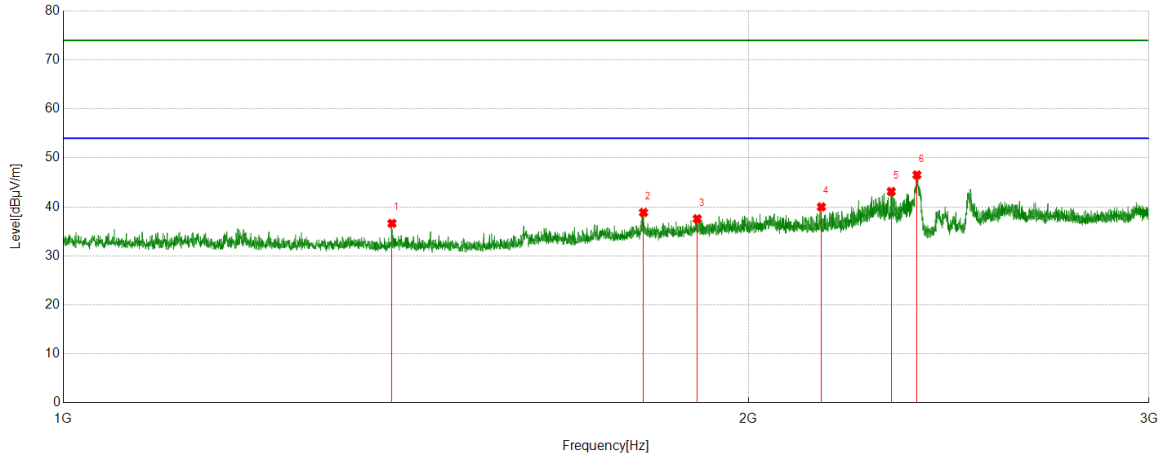
PK Result:

No.	Frequency	Reading Level	Correct Factor	Result	Limit	Margin	Remark
	[MHz]	[dBuV/m]	[dB]	[dBuV/m]	[dBuV/m]	[dB]	
1	1193.7742	41.86	-6.64	35.22	74.00	-38.78	Horizontal
2	1394.0493	41.56	-6.60	34.96	74.00	-39.04	Horizontal
3	1796.5996	41.64	-4.26	37.38	74.00	-36.62	Horizontal
4	2042.3803	40.85	-2.49	38.36	74.00	-35.64	Horizontal
5	2320.165	43.21	-2.98	40.23	74.00	-33.77	Horizontal
6	2372.4216	49.43	-2.48	46.95	74.00	-27.05	Horizontal

- Note: 1. Measurement = Reading Level + Correct Factor.
 2. If Peak Result complies with AV limit, AV Result is deemed to comply with AV limit.
 3. Test setup: RBW: 1 MHz, VBW: 3 MHz, Sweep time: auto.
 4. Peak: Peak detector.
 5. For below 3GHz part, filter losses were only considered in the spurious frequency bands and the authorized band was not corrected for Band Reject Filter losses.
 6. Only the worst case emission was recorded, if it complies with the limit, the other emissions deemed to comply with the limit.



Test Mode	Channel	Polarization	Verdict
11N HT40 MIMO	MCH	Vertical	PASS



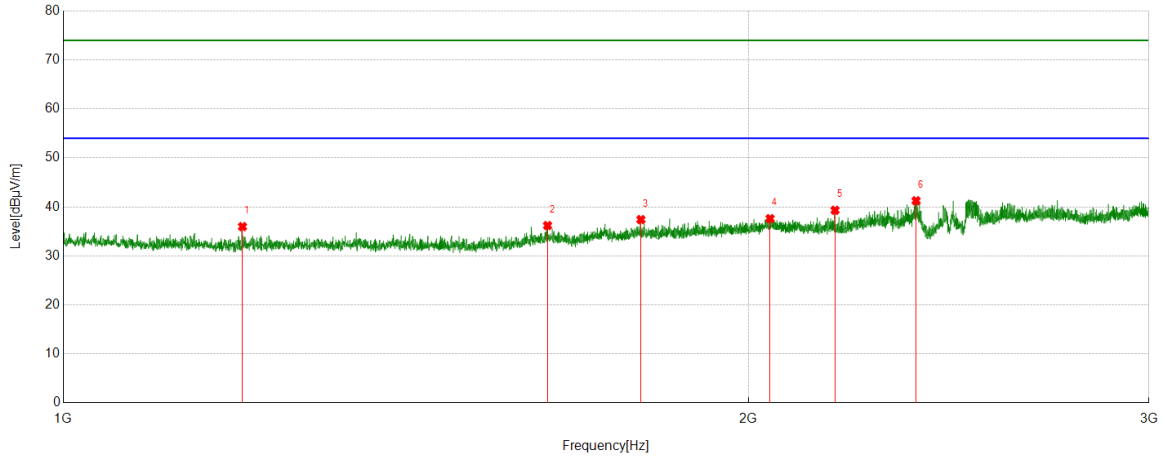
PK Result:

No.	Frequency	Reading Level	Correct Factor	Result	Limit	Margin	Remark
	[MHz]	[dBuV/m]	[dB]	[dBuV/m]	[dBuV/m]	[dB]	
1	1394.5493	43.21	-6.58	36.63	74.00	-37.37	Vertical
2	1798.8499	43.07	-4.22	38.85	74.00	-35.15	Vertical
3	1899.3624	41.35	-3.78	37.57	74.00	-36.43	Vertical
4	2153.6442	43.14	-3.14	40.00	74.00	-34.00	Vertical
5	2311.4139	46.14	-3.00	43.14	74.00	-30.86	Vertical
6	2372.1715	49.01	-2.48	46.53	74.00	-27.47	Vertical

- Note: 1. Measurement = Reading Level + Correct Factor.
 2. If Peak Result complies with AV limit, AV Result is deemed to comply with AV limit.
 3. Test setup: RBW: 1 MHz, VBW: 3 MHz, Sweep time: auto.
 4. Peak: Peak detector.
 5. For below 3GHz part, filter losses were only considered in the spurious frequency bands and the authorized band was not corrected for Band Reject Filter losses.
 6. Only the worst case emission was recorded, if it complies with the limit, the other emissions deemed to comply with the limit.



Test Mode	Channel	Polarization	Verdict
11N HT40 MIMO	HCH	Horizontal	PASS



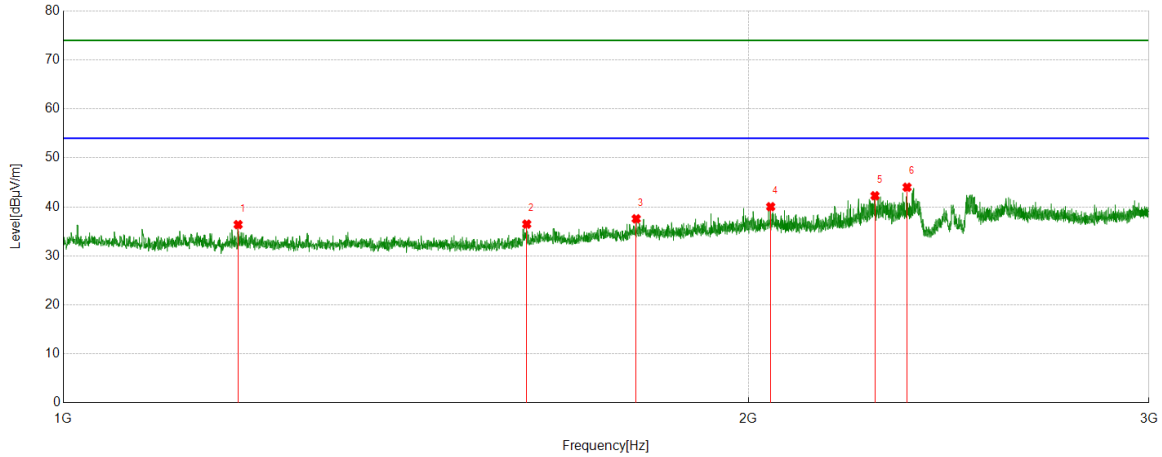
PK Result:

No.	Frequency	Reading Level	Correct Factor	Result	Limit	Margin	Remark
	[MHz]	[dBuV/m]	[dB]	[dBuV/m]	[dBuV/m]	[dB]	
1	1198.7748	42.64	-6.67	35.97	74.00	-38.03	Horizontal
2	1632.329	41.56	-5.37	36.19	74.00	-37.81	Horizontal
3	1794.0993	41.71	-4.30	37.41	74.00	-36.59	Horizontal
4	2044.6306	40.11	-2.50	37.61	74.00	-36.39	Horizontal
5	2183.648	42.53	-3.22	39.31	74.00	-34.69	Horizontal
6	2370.1713	43.72	-2.47	41.25	74.00	-32.75	Horizontal

- Note: 1. Measurement = Reading Level + Correct Factor.
 2. If Peak Result complies with AV limit, AV Result is deemed to comply with AV limit.
 3. Test setup: RBW: 1 MHz, VBW: 3 MHz, Sweep time: auto.
 4. Peak: Peak detector.
 5. For below 3GHz part, filter losses were only considered in the spurious frequency bands and the authorized band was not corrected for Band Reject Filter losses.
 6. Only the worst case emission was recorded, if it complies with the limit, the other emissions deemed to comply with the limit.



Test Mode	Channel	Polarization	Verdict
11N HT40 MIMO	HCH	Vertical	PASS



PK Result:

No.	Frequency	Reading Level	Correct Factor	Result	Limit	Margin	Remark
	[MHz]	[dBuV/m]	[dB]	[dBuV/m]	[dBuV/m]	[dB]	
1	1193.5242	43.01	-6.63	36.38	74.00	-37.62	Vertical
2	1598.3248	42.08	-5.60	36.48	74.00	-37.52	Vertical
3	1785.5982	41.94	-4.37	37.57	74.00	-36.43	Vertical
4	2045.8807	42.53	-2.50	40.03	74.00	-33.97	Vertical
5	2273.6592	45.50	-3.23	42.27	74.00	-31.73	Vertical
6	2348.6686	47.09	-3.08	44.01	74.00	-29.99	Vertical

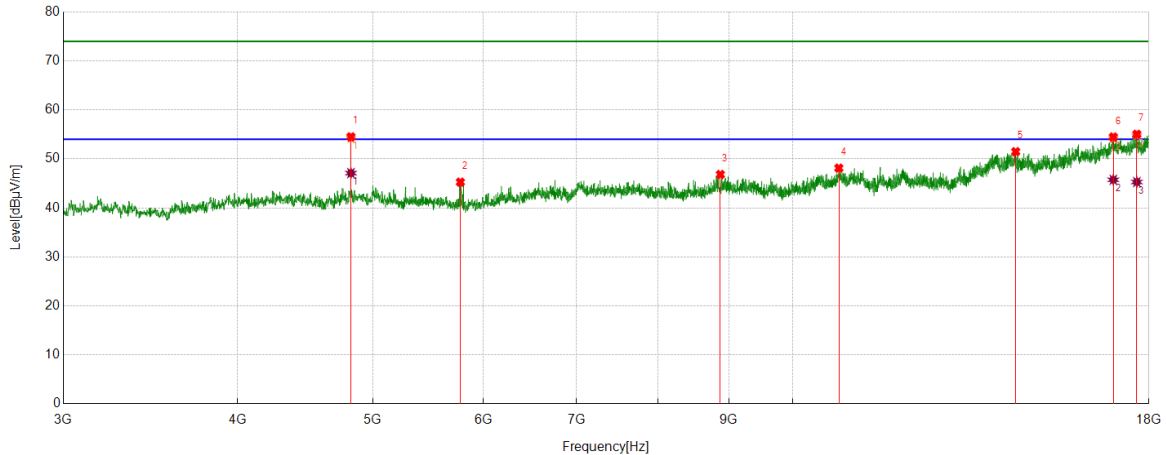
- Note: 1. Measurement = Reading Level + Correct Factor.
 2. If Peak Result complies with AV limit, AV Result is deemed to comply with AV limit.
 3. Test setup: RBW: 1 MHz, VBW: 3 MHz, Sweep time: auto.
 4. Peak: Peak detector.
 5. For below 3GHz part, filter losses were only considered in the spurious frequency bands and the authorized band was not corrected for Band Reject Filter losses.
 6. Only the worst case emission was recorded, if it complies with the limit, the other emissions deemed to comply with the limit.



Part 2: 3GHz~18GHz

HARMONICS AND SPURIOUS EMISSIONS

Test Mode	Channel	Polarization	Verdict
11B	LCH	Horizontal	PASS



PK Result:

No.	Frequency	Reading Level	Correct Factor	Result	Limit	Margin	Remark
	[MHz]	[dBuV/m]	[dB]	[dBuV/m]	[dBuV/m]	[dB]	
1	4822.7278	49.15	5.35	54.50	74.00	-19.50	Horizontal
2	5777.2222	41.00	4.26	45.26	74.00	-28.74	Horizontal
3	8873.2342	37.65	9.17	46.82	74.00	-27.18	Horizontal
4	10789.7237	36.09	12.03	48.12	74.00	-25.88	Horizontal
5	14446.4308	35.43	16.05	51.48	74.00	-22.52	Horizontal
6	16972.3715	34.49	19.98	54.47	74.00	-19.53	Horizontal
7	17643.7055	35.67	19.35	55.02	74.00	-18.98	Horizontal

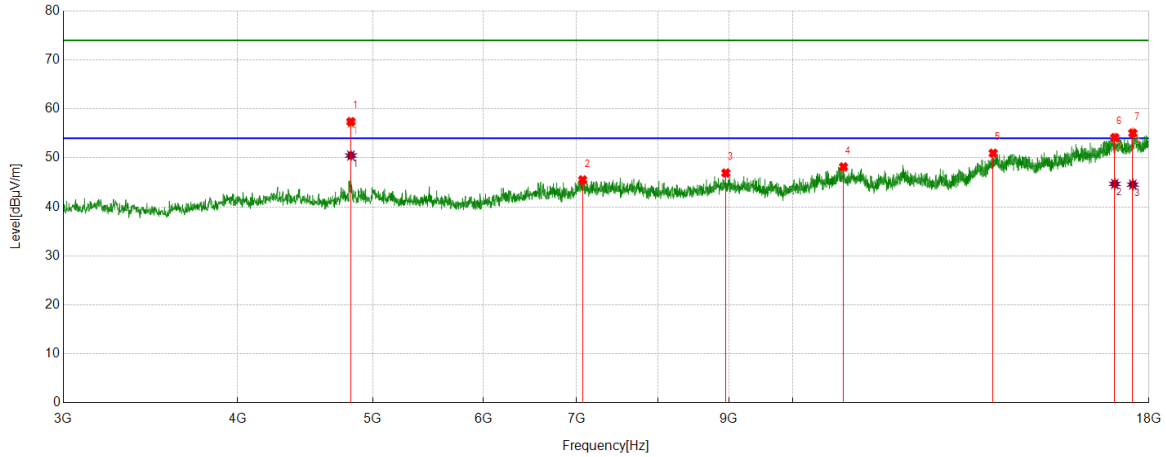
AV Result:

No.	Frequency	Reading Level	Correct Factor	Result	Limit	Margin	Remark
	[MHz]	[dBuV/m]	[dB]	[dBuV/m]	[dBuV/m]	[dB]	
1	4822.7278	41.75	5.35	47.10	54.00	-6.90	Horizontal
2	16972.3715	25.76	19.98	45.74	54.00	-8.26	Horizontal
3	17643.7055	25.93	19.35	45.28	54.00	-8.72	Horizontal

- Note: 1. Measurement = Reading Level + Correct Factor.
 2. If Peak Result complies with AV limit, AV Result is deemed to comply with AV limit.
 3. Peak detector: RBW: 1 MHz, VBW: 3 MHz.
 4. Average detector: RBW: 1 MHz, VBW: 1/T MHz(refer to clause 7.1.).
 5. For above 3GHz part, filter losses were only considered in the spurious frequency bands and the authorized band was not corrected for HPF losses.
 6. Only the worst case emission was recorded, if it complies with the limit, the other emissions deemed to comply with the limit.



Test Mode	Channel	Polarization	Verdict
11B	LCH	Vertical	PASS



PK Result:

No.	Frequency	Reading Level	Correct Factor	Result	Limit	Margin	Remark
	[MHz]	[dBuV/m]	[dB]	[dBuV/m]	[dBuV/m]	[dB]	
1	4822.7278	52.04	5.35	57.39	74.00	-16.61	Vertical
2	7069.2587	36.29	9.22	45.51	74.00	-28.49	Vertical
3	8953.8692	37.43	9.49	46.92	74.00	-27.08	Vertical
4	10872.234	36.04	12.13	48.17	74.00	-25.83	Vertical
5	13919.4899	35.46	15.50	50.96	74.00	-23.04	Vertical
6	17013.6267	35.14	19.00	54.14	74.00	-19.86	Vertical
7	17527.4409	35.94	19.12	55.06	74.00	-18.94	Vertical

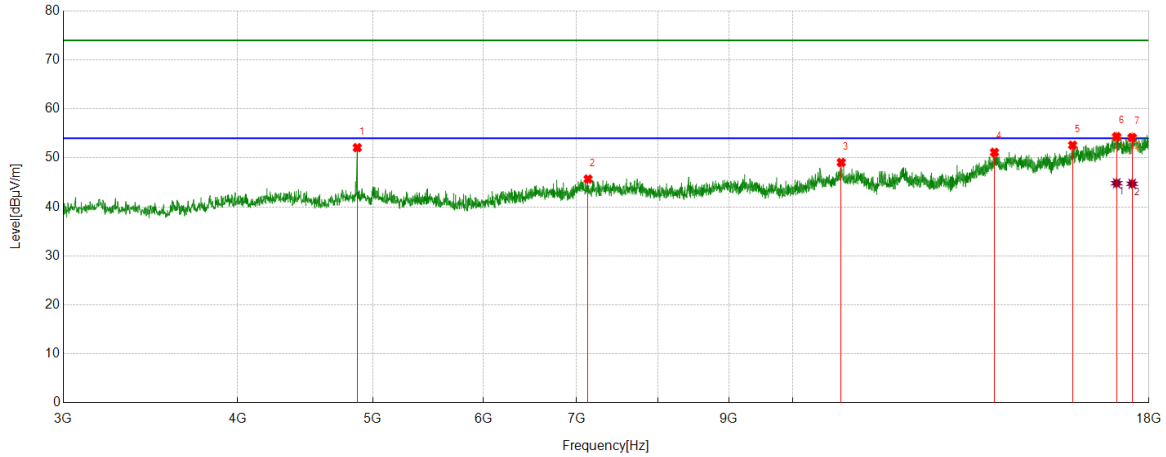
AV Result:

No.	Frequency	Reading Level	Correct Factor	Result	Limit	Margin	Remark
	[MHz]	[dBuV/m]	[dB]	[dBuV/m]	[dBuV/m]	[dB]	
1	4822.7278	45.13	5.35	50.48	54.00	-3.52	Vertical
2	17013.6267	25.69	19.00	44.69	54.00	-9.31	Vertical
3	17527.4409	25.43	19.12	44.55	54.00	-9.45	Vertical

- Note: 1. Measurement = Reading Level + Correct Factor.
 2. If Peak Result complies with AV limit, AV Result is deemed to comply with AV limit.
 3. Peak detector: RBW: 1 MHz, VBW: 3 MHz.
 4. Average detector: RBW: 1 MHz, VBW: 1/T MHz(refer to clause 7.1.).
 5. For above 3GHz part, filter losses were only considered in the spurious frequency bands and the authorized band was not corrected for HPF losses.
 6. Only the worst case emission was recorded, if it complies with the limit, the other emissions deemed to comply with the limit.



Test Mode	Channel	Polarization	Verdict
11B	MCH	Horizontal	PASS



PK Result:

No.	Frequency	Reading Level	Correct Factor	Result	Limit	Margin	Remark
	[MHz]	[dBuV/m]	[dB]	[dBuV/m]	[dBuV/m]	[dB]	
1	4873.3592	46.55	5.54	52.09	74.00	-21.91	Horizontal
2	7133.0166	36.56	9.12	45.68	74.00	-28.32	Horizontal
3	10832.8541	36.87	12.20	49.07	74.00	-24.93	Horizontal
4	13949.4937	35.59	15.54	51.13	74.00	-22.87	Horizontal
5	15869.7337	35.98	16.61	52.59	74.00	-21.41	Horizontal
6	17066.1333	34.47	19.87	54.34	74.00	-19.66	Horizontal
7	17508.6886	34.88	19.28	54.16	74.00	-19.84	Horizontal

AV Result:

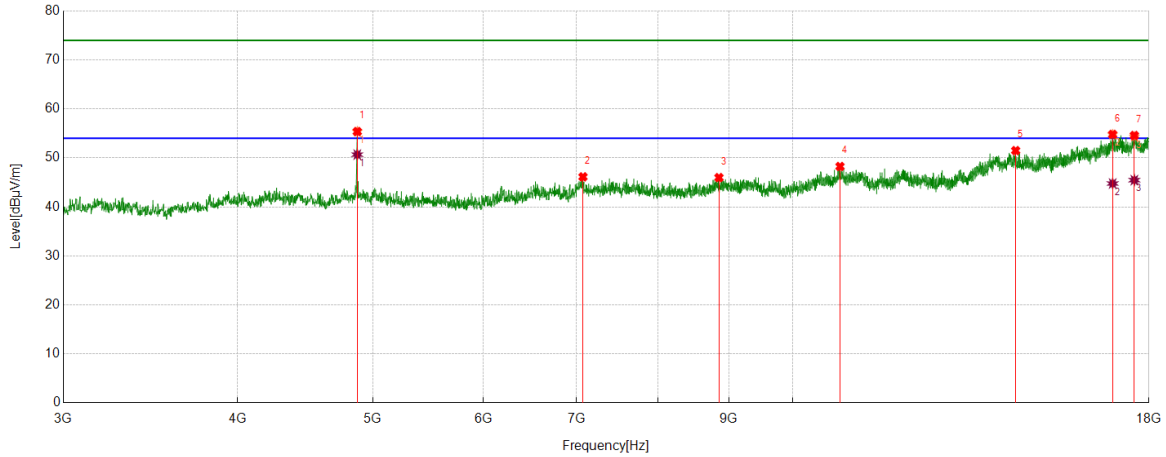
No.	Frequency	Reading Level	Correct Factor	Result	Limit	Margin	Remark
	[MHz]	[dBuV/m]	[dB]	[dBuV/m]	[dBuV/m]	[dB]	
1	17066.1333	24.96	19.87	44.83	54.00	-9.17	Horizontal
2	17508.6886	25.44	19.28	44.72	54.00	-9.28	Horizontal

Note: 1. Measurement = Reading Level + Correct Factor.

2. If Peak Result complies with AV limit, AV Result is deemed to comply with AV limit.
3. Peak detector: RBW: 1 MHz, VBW: 3 MHz.
4. Average detector: RBW: 1 MHz, VBW: 1/T MHz(refer to clause 7.1.).
5. For above 3GHz part, filter losses were only considered in the spurious frequency bands and the authorized band was not corrected for HPF losses.
6. Only the worst case emission was recorded, if it complies with the limit, the other emissions deemed to comply with the limit.



Test Mode	Channel	Polarization	Verdict
11B	MCH	Vertical	PASS



PK Result:

No.	Frequency	Reading Level	Correct Factor	Result	Limit	Margin	Remark
	[MHz]	[dBuV/m]	[dB]	[dBuV/m]	[dBuV/m]	[dB]	
1	4873.3592	49.83	5.54	55.37	74.00	-18.63	Vertical
2	7073.0091	36.84	9.29	46.13	74.00	-27.87	Vertical
3	8852.6066	36.74	9.24	45.98	74.00	-28.02	Vertical
4	10810.3513	36.14	12.11	48.25	74.00	-25.75	Vertical
5	14446.4308	35.44	16.05	51.49	74.00	-22.51	Vertical
6	16953.6192	35.20	19.59	54.79	74.00	-19.21	Vertical
7	17572.4466	34.60	19.97	54.57	74.00	-19.43	Vertical

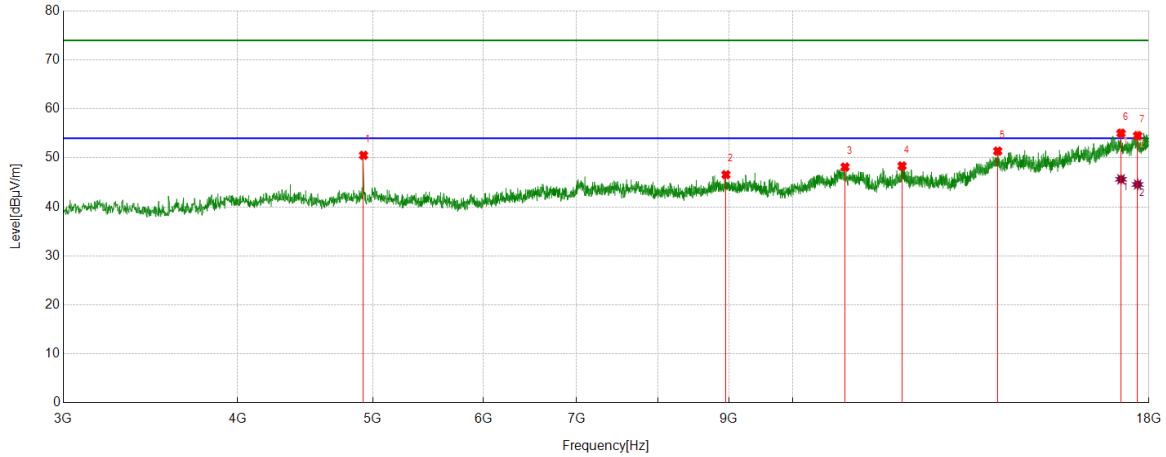
AV Result:

No.	Frequency	Reading Level	Correct Factor	Result	Limit	Margin	Remark
	[MHz]	[dBuV/m]	[dB]	[dBuV/m]	[dBuV/m]	[dB]	
1	4873.3592	45.13	5.54	50.67	54.00	-3.33	Vertical
2	16953.6192	25.18	19.59	44.77	54.00	-9.23	Vertical
3	17572.4466	25.49	19.97	45.46	54.00	-8.54	Vertical

- Note: 1. Measurement = Reading Level + Correct Factor.
 2. If Peak Result complies with AV limit, AV Result is deemed to comply with AV limit.
 3. Peak detector: RBW: 1 MHz, VBW: 3 MHz.
 4. Average detector: RBW: 1 MHz, VBW: 1/T MHz(refer to clause 7.1.).
 5. For above 3GHz part, filter losses were only considered in the spurious frequency bands and the authorized band was not corrected for HPF losses.
 6. Only the worst case emission was recorded, if it complies with the limit, the other emissions deemed to comply with the limit.



Test Mode	Channel	Polarization	Verdict
11B	HCH	Horizontal	PASS



PK Result:

No.	Frequency	Reading Level	Correct Factor	Result	Limit	Margin	Remark
	[MHz]	[dBuV/m]	[dB]	[dBuV/m]	[dBuV/m]	[dB]	
1	4923.9905	44.97	5.56	50.53	74.00	-23.47	Horizontal
2	8955.7445	37.11	9.46	46.57	74.00	-27.43	Horizontal
3	10900.3625	35.90	12.24	48.14	74.00	-25.86	Horizontal
4	11976.7471	35.74	12.62	48.36	74.00	-25.64	Horizontal
5	14024.5031	35.44	15.94	51.38	74.00	-22.62	Horizontal
6	17189.8987	35.83	19.21	55.04	74.00	-18.96	Horizontal
7	17668.0835	35.13	19.41	54.54	74.00	-19.46	Horizontal

AV Result:

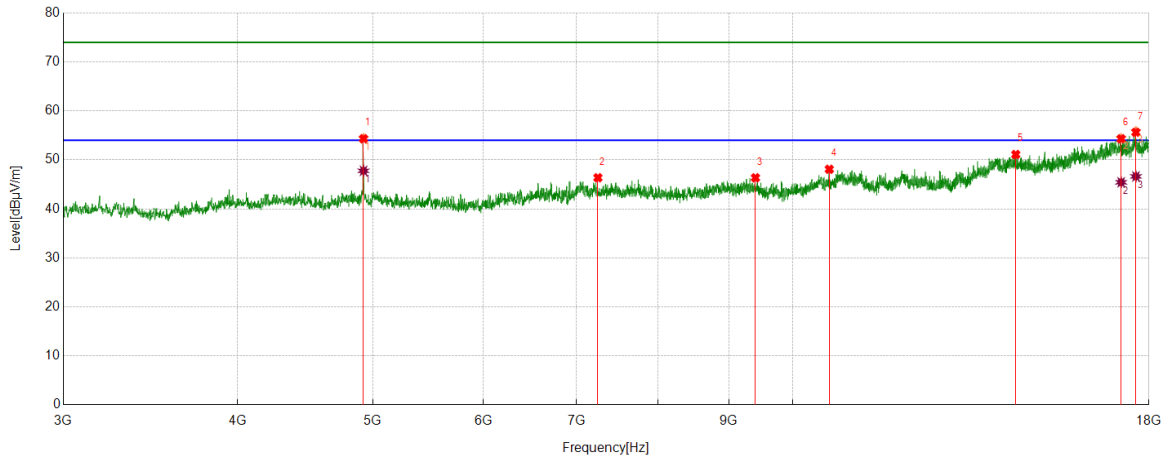
No.	Frequency	Reading Level	Correct Factor	Result	Limit	Margin	Remark
	[MHz]	[dBuV/m]	[dB]	[dBuV/m]	[dBuV/m]	[dB]	
1	17189.8987	26.43	19.21	45.64	54.00	-8.36	Horizontal
2	17668.0835	25.17	19.41	44.58	54.00	-9.42	Horizontal

Note: 1. Measurement = Reading Level + Correct Factor.

2. If Peak Result complies with AV limit, AV Result is deemed to comply with AV limit.
3. Peak detector: RBW: 1 MHz, VBW: 3 MHz.
4. Average detector: RBW: 1 MHz, VBW: 1/T MHz(refer to clause 7.1.).
5. For above 3GHz part, filter losses were only considered in the spurious frequency bands and the authorized band was not corrected for HPF losses.
6. Only the worst case emission was recorded, if it complies with the limit, the other emissions deemed to comply with the limit.



Test Mode	Channel	Polarization	Verdict
11B	HCH	Vertical	PASS



PK Result:

No.	Frequency	Reading Level	Correct Factor	Result	Limit	Margin	Remark
	[MHz]	[dBuV/m]	[dB]	[dBuV/m]	[dBuV/m]	[dB]	
1	4923.9905	48.76	5.56	54.32	74.00	-19.68	Vertical
2	7249.2812	37.64	8.72	46.36	74.00	-27.64	Vertical
3	9402.0503	36.84	9.51	46.35	74.00	-27.65	Vertical
4	10620.9526	36.21	11.88	48.09	74.00	-25.91	Vertical
5	14448.306	35.05	16.05	51.10	74.00	-22.90	Vertical
6	17193.6492	35.13	19.18	54.31	74.00	-19.69	Vertical
7	17617.4522	36.28	19.35	55.63	74.00	-18.37	Vertical

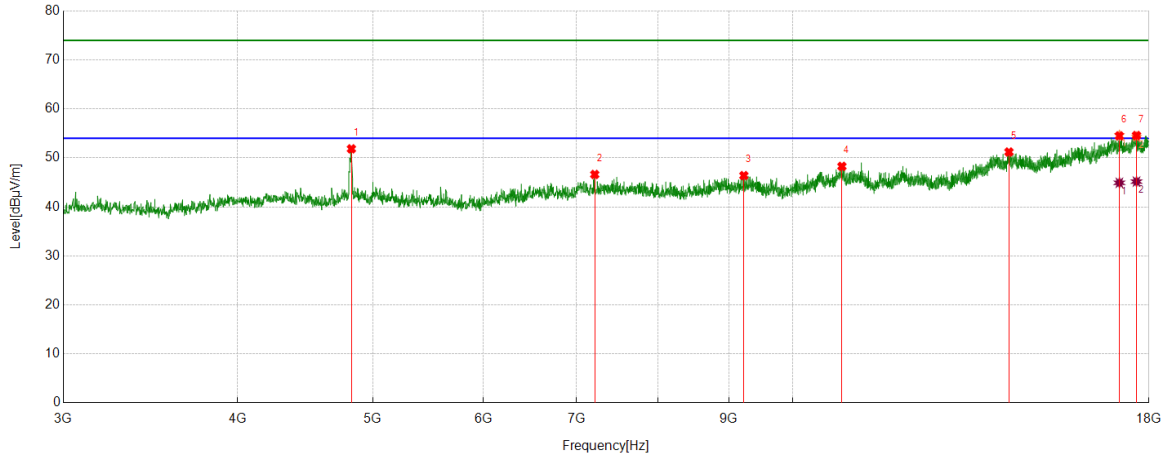
AV Result:

No.	Frequency	Reading Level	Correct Factor	Result	Limit	Margin	Remark
	[MHz]	[dBuV/m]	[dB]	[dBuV/m]	[dBuV/m]	[dB]	
1	4923.9905	42.21	5.56	47.77	54.00	-6.23	Vertical
2	17193.6492	26.25	19.18	45.43	54.00	-8.57	Vertical
3	17617.4522	27.28	19.35	46.63	54.00	-7.37	Vertical

- Note: 1. Measurement = Reading Level + Correct Factor.
 2. If Peak Result complies with AV limit, AV Result is deemed to comply with AV limit.
 3. Peak detector: RBW: 1 MHz, VBW: 3 MHz.
 4. Average detector: RBW: 1 MHz, VBW: 1/T MHz(refer to clause 7.1.).
 5. For above 3GHz part, filter losses were only considered in the spurious frequency bands and the authorized band was not corrected for HPF losses.
 6. Only the worst case emission was recorded, if it complies with the limit, the other emissions deemed to comply with the limit.



Test Mode	Channel	Polarization	Verdict
11G	LCH	Horizontal	PASS



PK Result:

No.	Frequency	Reading Level	Correct Factor	Result	Limit	Margin	Remark
	[MHz]	[dBuV/m]	[dB]	[dBuV/m]	[dBuV/m]	[dB]	
1	4826.4783	46.48	5.37	51.85	74.00	-22.15	Horizontal
2	7211.7765	37.82	8.80	46.62	74.00	-27.38	Horizontal
3	9223.903	37.04	9.35	46.39	74.00	-27.61	Horizontal
4	10844.1055	36.15	12.12	48.27	74.00	-25.73	Horizontal
5	14287.0359	35.25	15.95	51.20	74.00	-22.80	Horizontal
6	17143.0179	35.50	18.99	54.49	74.00	-19.51	Horizontal
7	17634.3293	35.15	19.42	54.57	74.00	-19.43	Horizontal

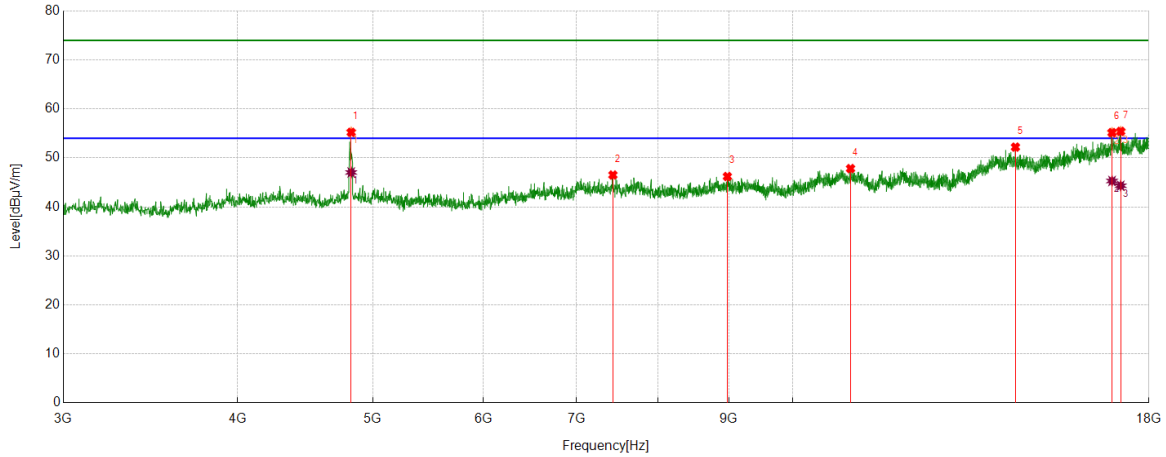
AV Result:

No.	Frequency	Reading Level	Correct Factor	Result	Limit	Margin	Remark
	[MHz]	[dBuV/m]	[dB]	[dBuV/m]	[dBuV/m]	[dB]	
1	17143.0179	25.93	18.99	44.92	54.00	-9.08	Horizontal
2	17634.3293	25.74	19.42	45.16	54.00	-8.84	Horizontal

- Note: 1. Measurement = Reading Level + Correct Factor.
 2. If Peak Result complies with AV limit, AV Result is deemed to comply with AV limit.
 3. Peak detector: RBW: 1 MHz, VBW: 3 MHz.
 4. Average detector: RBW: 1 MHz, VBW: 1/T MHz(refer to clause 7.1.).
 5. For above 3GHz part, filter losses were only considered in the spurious frequency bands and the authorized band was not corrected for HPF losses.
 6. Only the worst case emission was recorded, if it complies with the limit, the other emissions deemed to comply with the limit.



Test Mode	Channel	Polarization	Verdict
11G	LCH	Vertical	PASS



PK Result:

No.	Frequency	Reading Level	Correct Factor	Result	Limit	Margin	Remark
	[MHz]	[dBuV/m]	[dB]	[dBuV/m]	[dBuV/m]	[dB]	
1	4824.6031	49.86	5.36	55.22	74.00	-18.78	Vertical
2	7431.1789	37.99	8.52	46.51	74.00	-27.49	Vertical
3	8976.372	36.75	9.45	46.20	74.00	-27.80	Vertical
4	10999.75	35.45	12.37	47.82	74.00	-26.18	Vertical
5	14440.8051	36.14	16.06	52.20	74.00	-21.80	Vertical
6	16936.7421	35.92	19.24	55.16	74.00	-18.84	Vertical
7	17180.5226	36.60	18.81	55.41	74.00	-18.59	Vertical

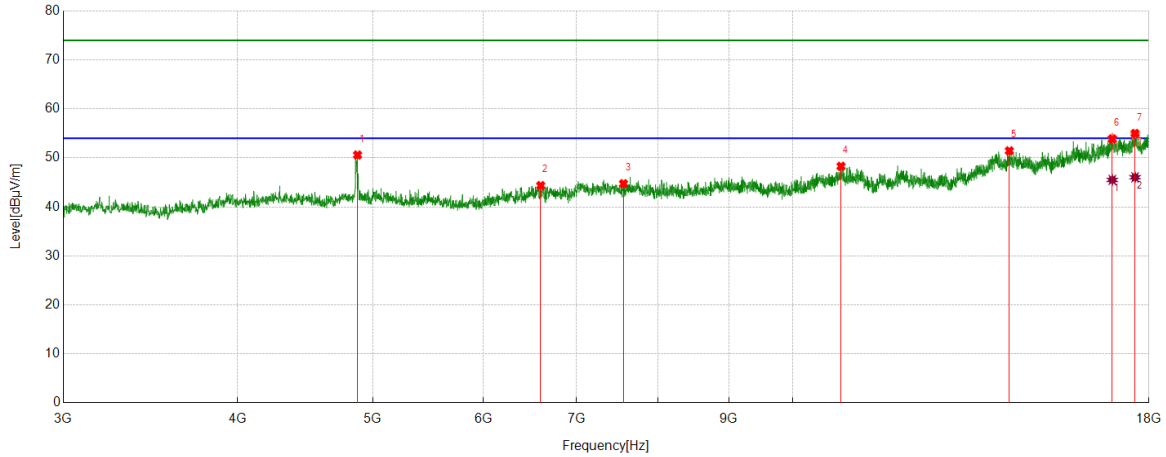
AV Result:

No.	Frequency	Reading Level	Correct Factor	Result	Limit	Margin	Remark
	[MHz]	[dBuV/m]	[dB]	[dBuV/m]	[dBuV/m]	[dB]	
1	4824.6031	41.67	5.36	47.03	54.00	-6.97	Vertical
2	16936.7421	26.05	19.24	45.29	54.00	-8.71	Vertical
3	17180.5226	25.51	18.81	44.32	54.00	-9.68	Vertical

- Note: 1. Measurement = Reading Level + Correct Factor.
 2. If Peak Result complies with AV limit, AV Result is deemed to comply with AV limit.
 3. Peak detector: RBW: 1 MHz, VBW: 3 MHz.
 4. Average detector: RBW: 1 MHz, VBW: 1/T MHz(refer to clause 7.1.).
 5. For above 3GHz part, filter losses were only considered in the spurious frequency bands and the authorized band was not corrected for HPF losses.
 6. Only the worst case emission was recorded, if it complies with the limit, the other emissions deemed to comply with the limit.



Test Mode	Channel	Polarization	Verdict
11G	MCH	Horizontal	PASS



PK Result:

No.	Frequency	Reading Level	Correct Factor	Result	Limit	Margin	Remark
	[MHz]	[dBuV/m]	[dB]	[dBuV/m]	[dBuV/m]	[dB]	
1	4875.2344	45.04	5.55	50.59	74.00	-23.41	Horizontal
2	6596.6996	35.70	8.65	44.35	74.00	-29.65	Horizontal
3	7562.4453	36.35	8.38	44.73	74.00	-29.27	Horizontal
4	10829.1036	36.06	12.23	48.29	74.00	-25.71	Horizontal
5	14296.4121	35.40	16.04	51.44	74.00	-22.56	Horizontal
6	16944.243	34.44	19.43	53.87	74.00	-20.13	Horizontal
7	17593.0741	35.29	19.69	54.98	74.00	-19.02	Horizontal

AV Result:

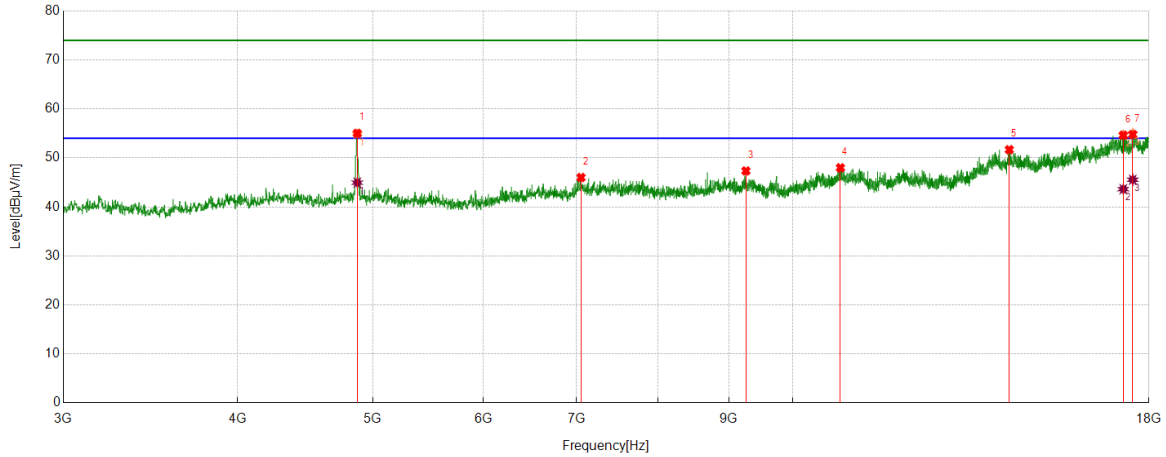
No.	Frequency	Reading Level	Correct Factor	Result	Limit	Margin	Remark
	[MHz]	[dBuV/m]	[dB]	[dBuV/m]	[dBuV/m]	[dB]	
1	16944.243	26.08	19.43	45.51	54.00	-8.49	Horizontal
2	17593.0741	26.35	19.69	46.04	54.00	-7.96	Horizontal

Note: 1. Measurement = Reading Level + Correct Factor.

2. If Peak Result complies with AV limit, AV Result is deemed to comply with AV limit.
3. Peak detector: RBW: 1 MHz, VBW: 3 MHz.
4. Average detector: RBW: 1 MHz, VBW: 1/T MHz(refer to clause 7.1.).
5. For above 3GHz part, filter losses were only considered in the spurious frequency bands and the authorized band was not corrected for HPF losses.
6. Only the worst case emission was recorded, if it complies with the limit, the other emissions deemed to comply with the limit.



Test Mode	Channel	Polarization	Verdict
11G	MCH	Vertical	PASS



PK Result:

No.	Frequency	Reading Level	Correct Factor	Result	Limit	Margin	Remark
	[MHz]	[dBuV/m]	[dB]	[dBuV/m]	[dBuV/m]	[dB]	
1	4873.3592	49.47	5.54	55.01	74.00	-18.99	Vertical
2	7050.5063	36.69	9.31	46.00	74.00	-28.00	Vertical
3	9255.782	38.04	9.30	47.34	74.00	-26.66	Vertical
4	10817.8522	35.79	12.19	47.98	74.00	-26.02	Vertical
5	14294.5368	35.66	16.02	51.68	74.00	-22.32	Vertical
6	17253.6567	36.37	18.26	54.63	74.00	-19.37	Vertical
7	17525.5657	35.67	19.11	54.78	74.00	-19.22	Vertical

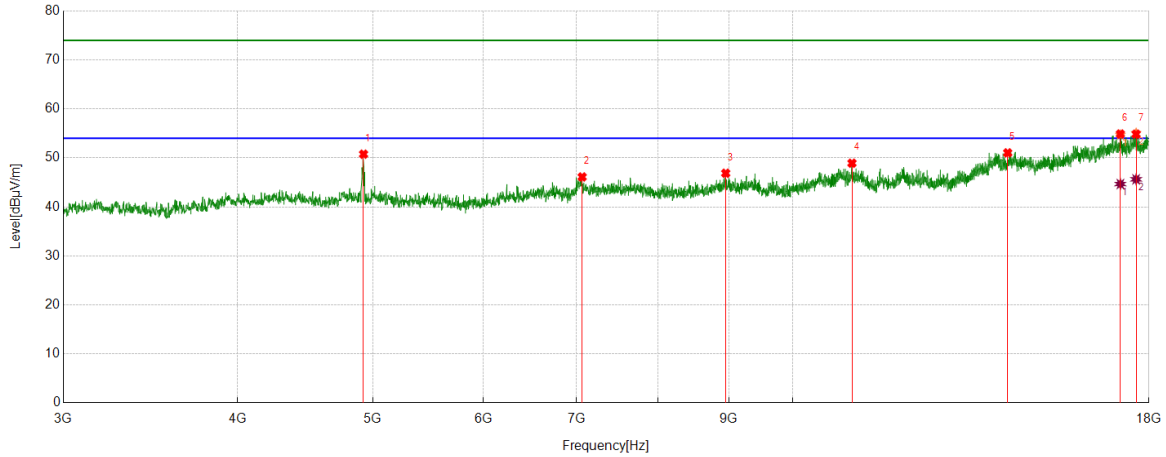
AV Result:

No.	Frequency	Reading Level	Correct Factor	Result	Limit	Margin	Remark
	[MHz]	[dBuV/m]	[dB]	[dBuV/m]	[dBuV/m]	[dB]	
1	4873.3592	39.40	5.54	44.94	54.00	-9.06	Vertical
2	17253.6567	25.36	18.26	43.62	54.00	-10.38	Vertical
3	17525.5657	26.43	19.11	45.54	54.00	-8.46	Vertical

- Note: 1. Measurement = Reading Level + Correct Factor.
 2. If Peak Result complies with AV limit, AV Result is deemed to comply with AV limit.
 3. Peak detector: RBW: 1 MHz, VBW: 3 MHz.
 4. Average detector: RBW: 1 MHz, VBW: 1/T MHz(refer to clause 7.1.).
 5. For above 3GHz part, filter losses were only considered in the spurious frequency bands and the authorized band was not corrected for HPF losses.
 6. Only the worst case emission was recorded, if it complies with the limit, the other emissions deemed to comply with the limit.



Test Mode	Channel	Polarization	Verdict
11G	HCH	Horizontal	PASS



PK Result:

No.	Frequency	Reading Level	Correct Factor	Result	Limit	Margin	Remark
	[MHz]	[dBuV/m]	[dB]	[dBuV/m]	[dBuV/m]	[dB]	
1	4923.9905	45.20	5.56	50.76	74.00	-23.24	Horizontal
2	7063.633	36.94	9.17	46.11	74.00	-27.89	Horizontal
3	8951.994	37.35	9.52	46.87	74.00	-27.13	Horizontal
4	11026.0032	36.43	12.49	48.92	74.00	-25.08	Horizontal
5	14257.0321	35.01	16.02	51.03	74.00	-22.97	Horizontal
6	17171.1464	36.00	18.88	54.88	74.00	-19.12	Horizontal
7	17623.0779	35.51	19.33	54.84	74.00	-19.16	Horizontal

AV Result:

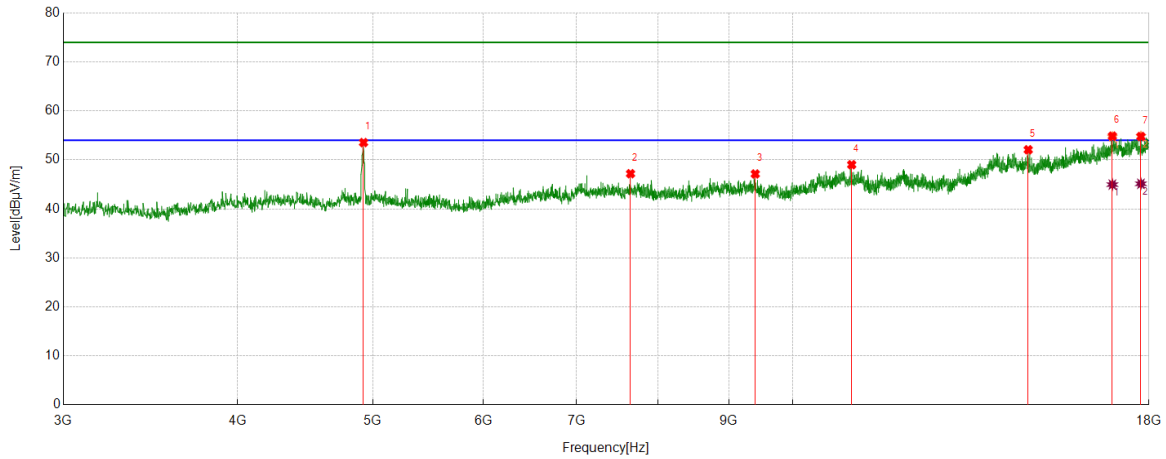
No.	Frequency	Reading Level	Correct Factor	Result	Limit	Margin	Remark
	[MHz]	[dBuV/m]	[dB]	[dBuV/m]	[dBuV/m]	[dB]	
1	17171.1464	25.79	18.88	44.67	54.00	-9.33	Horizontal
2	17623.0779	26.30	19.33	45.63	54.00	-8.37	Horizontal

Note: 1. Measurement = Reading Level + Correct Factor.

2. If Peak Result complies with AV limit, AV Result is deemed to comply with AV limit.
3. Peak detector: RBW: 1 MHz, VBW: 3 MHz.
4. Average detector: RBW: 1 MHz, VBW: 1/T MHz(refer to clause 7.1.).
5. For above 3GHz part, filter losses were only considered in the spurious frequency bands and the authorized band was not corrected for HPF losses.
6. Only the worst case emission was recorded, if it complies with the limit, the other emissions deemed to comply with the limit.



Test Mode	Channel	Polarization	Verdict
11G	HCH	Vertical	PASS



PK Result:

No.	Frequency	Reading Level	Correct Factor	Result	Limit	Margin	Remark
	[MHz]	[dBuV/m]	[dB]	[dBuV/m]	[dBuV/m]	[dB]	
1	4923.9905	47.98	5.56	53.54	74.00	-20.46	Vertical
2	7650.5813	38.49	8.69	47.18	74.00	-26.82	Vertical
3	9400.175	37.66	9.47	47.13	74.00	-26.87	Vertical
4	11020.3775	36.52	12.50	49.02	74.00	-24.98	Vertical
5	14748.3435	36.66	15.41	52.07	74.00	-21.93	Vertical
6	16946.1183	35.40	19.45	54.85	74.00	-19.15	Vertical
7	17763.7205	35.65	19.13	54.78	74.00	-19.22	Vertical

AV Result:

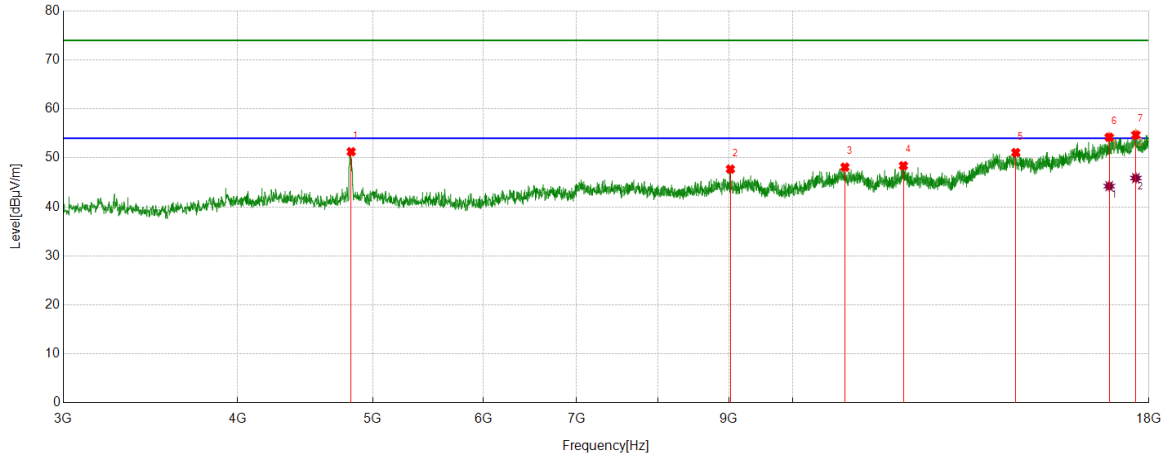
No.	Frequency	Reading Level	Correct Factor	Result	Limit	Margin	Remark
	[MHz]	[dBuV/m]	[dB]	[dBuV/m]	[dBuV/m]	[dB]	
1	16946.1183	25.51	19.45	44.96	54.00	-9.04	Vertical
2	17763.7205	26.00	19.13	45.13	54.00	-8.87	Vertical

Note: 1. Measurement = Reading Level + Correct Factor.

2. If Peak Result complies with AV limit, AV Result is deemed to comply with AV limit.
3. Peak detector: RBW: 1 MHz, VBW: 3 MHz.
4. Average detector: RBW: 1 MHz, VBW: 1/T MHz(refer to clause 7.1.).
5. For above 3GHz part, filter losses were only considered in the spurious frequency bands and the authorized band was not corrected for HPF losses.
6. Only the worst case emission was recorded, if it complies with the limit, the other emissions deemed to comply with the limit.



Test Mode	Channel	Polarization	Verdict
11N HT20 MIMO	LCH	Horizontal	PASS



PK Result:

No.	Frequency	Reading Level	Correct Factor	Result	Limit	Margin	Remark
	[MHz]	[dBuV/m]	[dB]	[dBuV/m]	[dBuV/m]	[dB]	
1	4824.6031	45.90	5.36	51.26	74.00	-22.74	Horizontal
2	9021.3777	38.32	9.39	47.71	74.00	-26.29	Horizontal
3	10898.4873	35.88	12.24	48.12	74.00	-25.88	Horizontal
4	12003.0004	35.49	12.92	48.41	74.00	-25.59	Horizontal
5	14448.306	35.04	16.05	51.09	74.00	-22.91	Horizontal
6	16857.9822	35.81	18.40	54.21	74.00	-19.79	Horizontal
7	17615.5769	35.24	19.42	54.66	74.00	-19.34	Horizontal

AV Result:

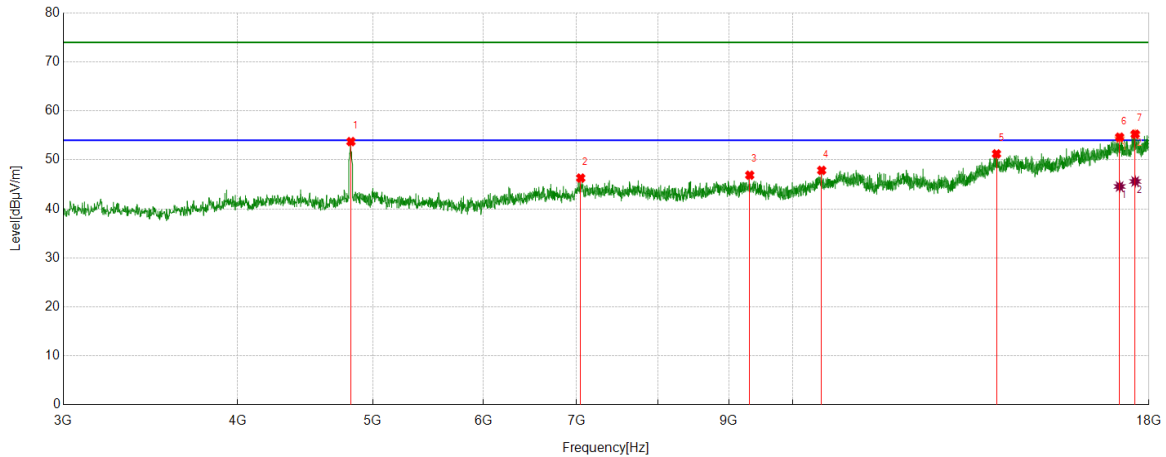
No.	Frequency	Reading Level	Correct Factor	Result	Limit	Margin	Remark
	[MHz]	[dBuV/m]	[dB]	[dBuV/m]	[dBuV/m]	[dB]	
1	16857.9822	25.83	18.40	44.23	54.00	-9.77	Horizontal
2	17615.5769	26.46	19.42	45.88	54.00	-8.12	Horizontal

Note: 1. Measurement = Reading Level + Correct Factor.

2. If Peak Result complies with AV limit, AV Result is deemed to comply with AV limit.
3. Peak detector: RBW: 1 MHz, VBW: 3 MHz.
4. Average detector: RBW: 1 MHz, VBW: 1/T MHz(refer to clause 7.1.).
5. For above 3GHz part, filter losses were only considered in the spurious frequency bands and the authorized band was not corrected for HPF losses.
6. Only the worst case emission was recorded, if it complies with the limit, the other emissions deemed to comply with the limit.



Test Mode	Channel	Polarization	Verdict
11N HT20 MIMO	LCH	Vertical	PASS



PK Result:

No.	Frequency	Reading Level	Correct Factor	Result	Limit	Margin	Remark
	[MHz]	[dBuV/m]	[dB]	[dBuV/m]	[dBuV/m]	[dB]	
1	4822.7278	48.38	5.35	53.73	74.00	-20.27	Vertical
2	7046.7558	37.02	9.27	46.29	74.00	-27.71	Vertical
3	9313.9142	37.59	9.29	46.88	74.00	-27.12	Vertical
4	10487.811	36.28	11.58	47.86	74.00	-26.14	Vertical
5	13996.3745	35.39	15.84	51.23	74.00	-22.77	Vertical
6	17150.5188	35.32	19.31	54.63	74.00	-19.37	Vertical
7	17596.8246	35.65	19.61	55.26	74.00	-18.74	Vertical

AV Result:

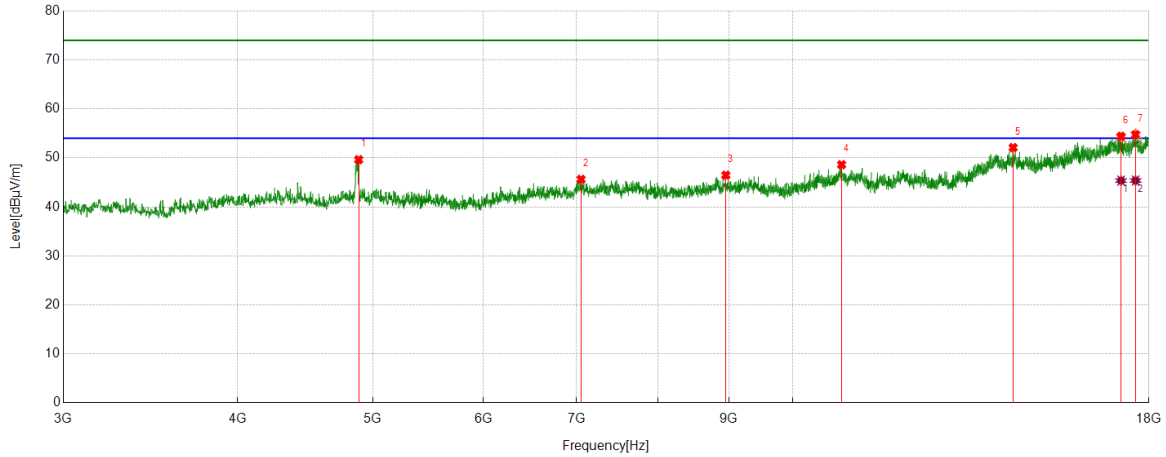
No.	Frequency	Reading Level	Correct Factor	Result	Limit	Margin	Remark
	[MHz]	[dBuV/m]	[dB]	[dBuV/m]	[dBuV/m]	[dB]	
1	17150.5188	25.26	19.31	44.57	54.00	-9.43	Vertical
2	17596.8246	25.99	19.61	45.60	54.00	-8.40	Vertical

Note: 1. Measurement = Reading Level + Correct Factor.

2. If Peak Result complies with AV limit, AV Result is deemed to comply with AV limit.
3. Peak detector: RBW: 1 MHz, VBW: 3 MHz.
4. Average detector: RBW: 1 MHz, VBW: 1/T MHz(refer to clause 7.1.).
5. For above 3GHz part, filter losses were only considered in the spurious frequency bands and the authorized band was not corrected for HPF losses.
6. Only the worst case emission was recorded, if it complies with the limit, the other emissions deemed to comply with the limit.



Test Mode	Channel	Polarization	Verdict
11N HT20 MIMO	MCH	Horizontal	PASS



PK Result:

No.	Frequency	Reading Level	Correct Factor	Result	Limit	Margin	Remark
	[MHz]	[dBuV/m]	[dB]	[dBuV/m]	[dBuV/m]	[dB]	
1	4884.6106	44.16	5.48	49.64	74.00	-24.36	Horizontal
2	7050.5063	36.32	9.31	45.63	74.00	-28.37	Horizontal
3	8953.8692	36.98	9.49	46.47	74.00	-27.53	Horizontal
4	10838.4798	36.50	12.12	48.62	74.00	-25.38	Horizontal
5	14386.4233	36.32	15.78	52.10	74.00	-21.90	Horizontal
6	17189.8987	35.19	19.21	54.40	74.00	-19.60	Horizontal
7	17608.076	35.11	19.63	54.74	74.00	-19.26	Horizontal

AV Result:

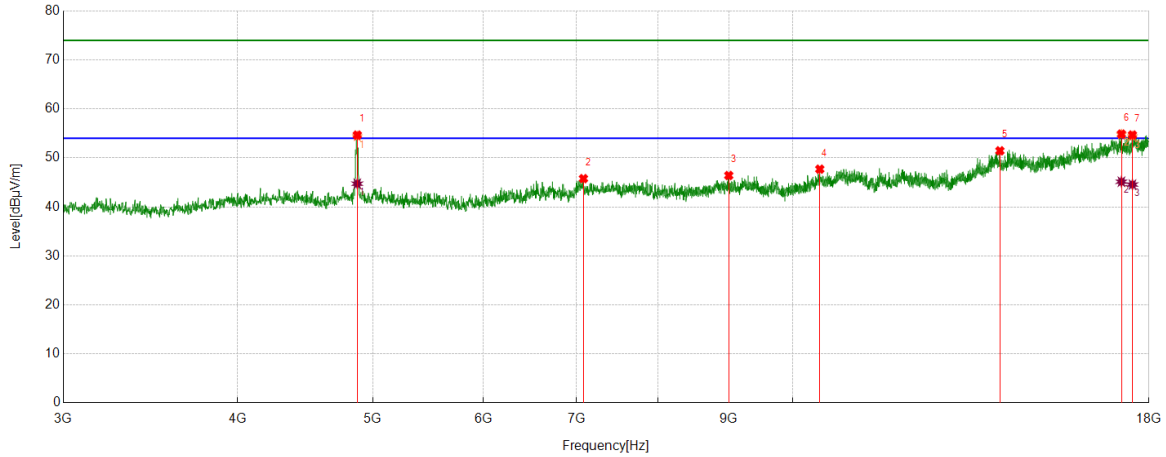
No.	Frequency	Reading Level	Correct Factor	Result	Limit	Margin	Remark
	[MHz]	[dBuV/m]	[dB]	[dBuV/m]	[dBuV/m]	[dB]	
1	17189.8987	26.16	19.21	45.37	54.00	-8.63	Horizontal
2	17608.076	25.75	19.63	45.38	54.00	-8.62	Horizontal

Note: 1. Measurement = Reading Level + Correct Factor.

2. If Peak Result complies with AV limit, AV Result is deemed to comply with AV limit.
3. Peak detector: RBW: 1 MHz, VBW: 3 MHz.
4. Average detector: RBW: 1 MHz, VBW: 1/T MHz(refer to clause 7.1.).
5. For above 3GHz part, filter losses were only considered in the spurious frequency bands and the authorized band was not corrected for HPF losses.
6. Only the worst case emission was recorded, if it complies with the limit, the other emissions deemed to comply with the limit.



Test Mode	Channel	Polarization	Verdict
11N HT20 MIMO	MCH	Vertical	PASS



PK Result:

No.	Frequency	Reading Level	Correct Factor	Result	Limit	Margin	Remark
	[MHz]	[dBuV/m]	[dB]	[dBuV/m]	[dBuV/m]	[dB]	
1	4873.3592	49.12	5.54	54.66	74.00	-19.34	Vertical
2	7078.6348	36.35	9.42	45.77	74.00	-28.23	Vertical
3	8996.9996	36.94	9.47	46.41	74.00	-27.59	Vertical
4	10455.932	36.27	11.43	47.70	74.00	-26.30	Vertical
5	14075.1344	35.30	16.15	51.45	74.00	-22.55	Vertical
6	17201.1501	35.82	19.04	54.86	74.00	-19.14	Vertical
7	17516.1895	35.49	19.19	54.68	74.00	-19.32	Vertical

AV Result:

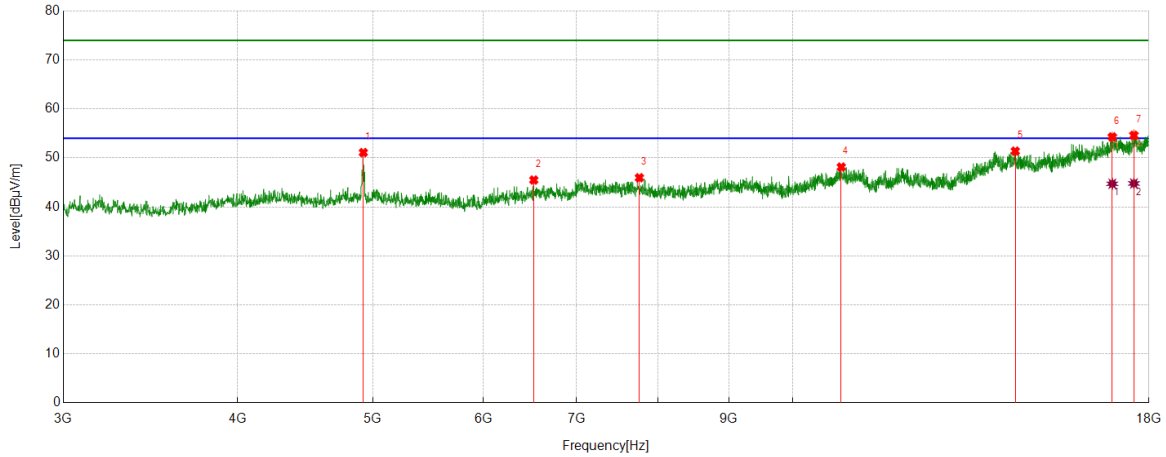
No.	Frequency	Reading Level	Correct Factor	Result	Limit	Margin	Remark
	[MHz]	[dBuV/m]	[dB]	[dBuV/m]	[dBuV/m]	[dB]	
1	4873.3592	39.19	5.54	44.73	54.00	-9.27	Vertical
2	17201.1501	26.10	19.04	45.14	54.00	-8.86	Vertical
3	17516.1895	25.37	19.19	44.56	54.00	-9.44	Vertical

Note: 1. Measurement = Reading Level + Correct Factor.

2. If Peak Result complies with AV limit, AV Result is deemed to comply with AV limit.
3. Peak detector: RBW: 1 MHz, VBW: 3 MHz.
4. Average detector: RBW: 1 MHz, VBW: 1/T MHz(refer to clause 7.1.).
5. For above 3GHz part, filter losses were only considered in the spurious frequency bands and the authorized band was not corrected for HPF losses.
6. Only the worst case emission was recorded, if it complies with the limit, the other emissions deemed to comply with the limit.



Test Mode	Channel	Polarization	Verdict
11N HT20 MIMO	HCH	Horizontal	PASS



PK Result:

No.	Frequency	Reading Level	Correct Factor	Result	Limit	Margin	Remark
	[MHz]	[dBuV/m]	[dB]	[dBuV/m]	[dBuV/m]	[dB]	
1	4922.1153	45.52	5.57	51.09	74.00	-22.91	Horizontal
2	6521.6902	37.03	8.45	45.48	74.00	-28.52	Horizontal
3	7763.0954	37.66	8.29	45.95	74.00	-28.05	Horizontal
4	10832.8541	35.93	12.20	48.13	74.00	-25.87	Horizontal
5	14437.0546	35.37	16.01	51.38	74.00	-22.62	Horizontal
6	16944.243	34.85	19.43	54.28	74.00	-19.72	Horizontal
7	17559.3199	35.15	19.45	54.60	74.00	-19.40	Horizontal

AV Result:

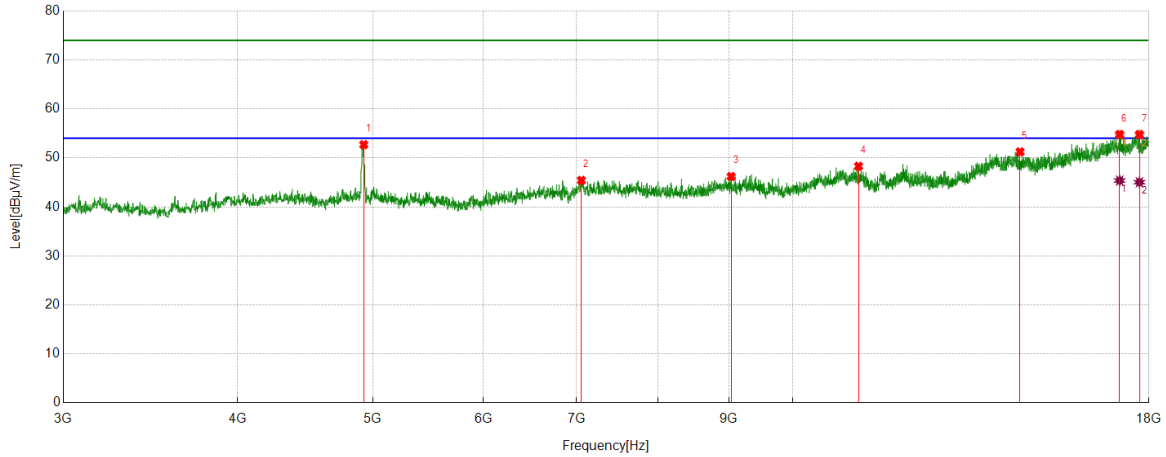
No.	Frequency	Reading Level	Correct Factor	Result	Limit	Margin	Remark
	[MHz]	[dBuV/m]	[dB]	[dBuV/m]	[dBuV/m]	[dB]	
1	16944.243	25.29	19.43	44.72	54.00	-9.28	Horizontal
2	17559.3199	25.33	19.45	44.78	54.00	-9.22	Horizontal

Note: 1. Measurement = Reading Level + Correct Factor.

2. If Peak Result complies with AV limit, AV Result is deemed to comply with AV limit.
3. Peak detector: RBW: 1 MHz, VBW: 3 MHz.
4. Average detector: RBW: 1 MHz, VBW: 1/T MHz(refer to clause 7.1.).
5. For above 3GHz part, filter losses were only considered in the spurious frequency bands and the authorized band was not corrected for HPF losses.
6. Only the worst case emission was recorded, if it complies with the limit, the other emissions deemed to comply with the limit.



Test Mode	Channel	Polarization	Verdict
11N HT20 MIMO	HCH	Vertical	PASS



PK Result:

No.	Frequency	Reading Level	Correct Factor	Result	Limit	Margin	Remark
	[MHz]	[dBuV/m]	[dB]	[dBuV/m]	[dBuV/m]	[dB]	
1	4925.8657	47.14	5.56	52.70	74.00	-21.30	Vertical
2	7054.2568	36.16	9.25	45.41	74.00	-28.59	Vertical
3	9032.6291	36.68	9.52	46.20	74.00	-27.80	Vertical
4	11146.0183	36.18	12.11	48.29	74.00	-25.71	Vertical
5	14551.4439	34.92	16.30	51.22	74.00	-22.78	Vertical
6	17150.5188	35.47	19.31	54.78	74.00	-19.22	Vertical
7	17720.5901	35.30	19.46	54.76	74.00	-19.24	Vertical

AV Result:

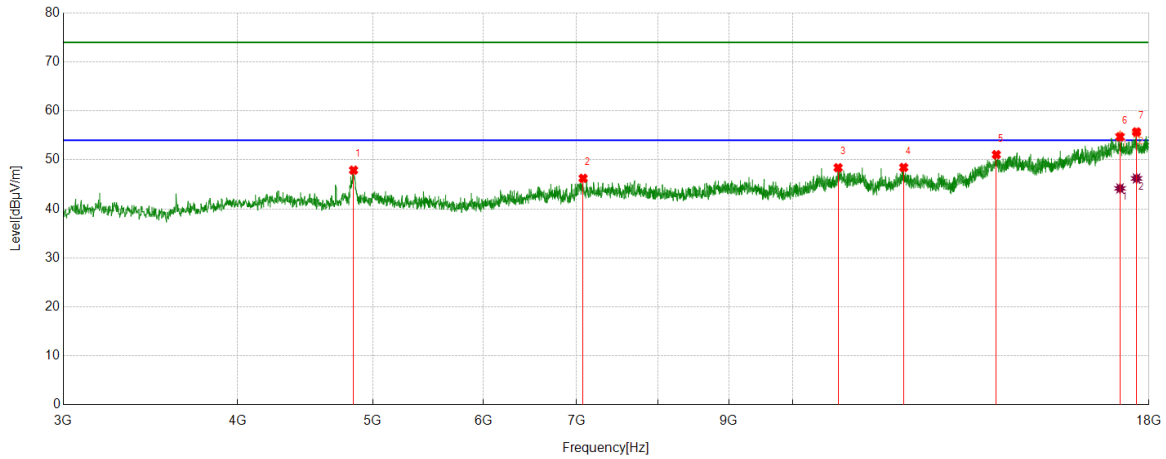
No.	Frequency	Reading Level	Correct Factor	Result	Limit	Margin	Remark
	[MHz]	[dBuV/m]	[dB]	[dBuV/m]	[dBuV/m]	[dB]	
1	17150.5188	26.07	19.31	45.38	54.00	-8.62	Vertical
2	17720.5901	25.57	19.46	45.03	54.00	-8.97	Vertical

Note: 1. Measurement = Reading Level + Correct Factor.

2. If Peak Result complies with AV limit, AV Result is deemed to comply with AV limit.
3. Peak detector: RBW: 1 MHz, VBW: 3 MHz.
4. Average detector: RBW: 1 MHz, VBW: 1/T MHz(refer to clause 7.1.).
5. For above 3GHz part, filter losses were only considered in the spurious frequency bands and the authorized band was not corrected for HPF losses.
6. Only the worst case emission was recorded, if it complies with the limit, the other emissions deemed to comply with the limit.



Test Mode	Channel	Polarization	Verdict
11N HT40 MIMO	LCH	Horizontal	PASS



PK Result:

No.	Frequency	Reading Level	Correct Factor	Result	Limit	Margin	Remark
	[MHz]	[dBuV/m]	[dB]	[dBuV/m]	[dBuV/m]	[dB]	
1	4843.3554	42.46	5.44	47.90	74.00	-26.10	Horizontal
2	7074.8844	36.91	9.33	46.24	74.00	-27.76	Horizontal
3	10776.5971	36.43	11.98	48.41	74.00	-25.59	Horizontal
4	12008.6261	35.60	12.86	48.46	74.00	-25.54	Horizontal
5	13992.6241	35.21	15.86	51.07	74.00	-22.93	Horizontal
6	17161.7702	35.73	18.98	54.71	74.00	-19.29	Horizontal
7	17636.2045	36.33	19.38	55.71	74.00	-18.29	Horizontal

AV Result:

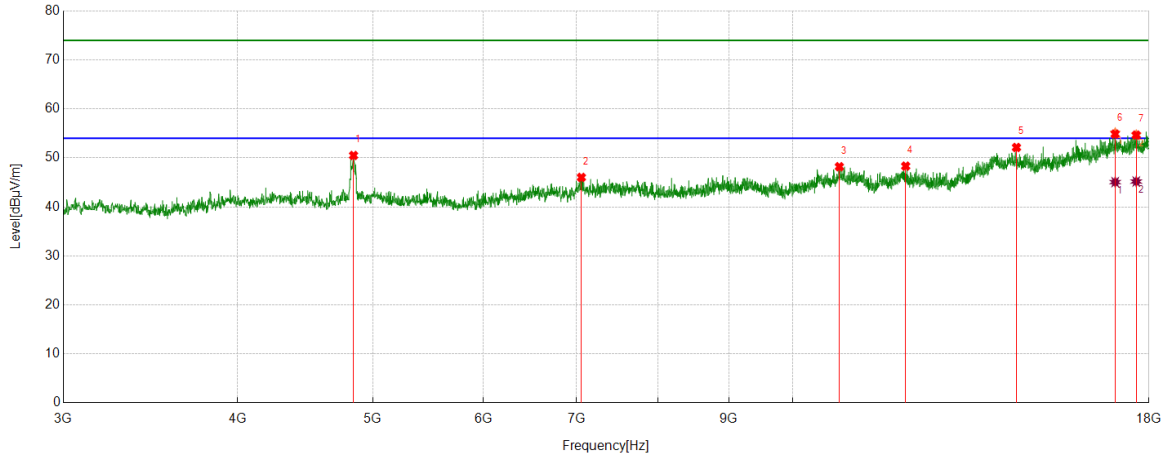
No.	Frequency	Reading Level	Correct Factor	Result	Limit	Margin	Remark
	[MHz]	[dBuV/m]	[dB]	[dBuV/m]	[dBuV/m]	[dB]	
1	17161.7702	25.20	18.98	44.18	54.00	-9.82	Horizontal
2	17636.2045	26.84	19.38	46.22	54.00	-7.78	Horizontal

Note: 1. Measurement = Reading Level + Correct Factor.

2. If Peak Result complies with AV limit, AV Result is deemed to comply with AV limit.
3. Peak detector: RBW: 1 MHz, VBW: 3 MHz.
4. Average detector: RBW: 1 MHz, VBW: 1/T MHz(refer to clause 7.1.).
5. For above 3GHz part, filter losses were only considered in the spurious frequency bands and the authorized band was not corrected for HPF losses.
6. Only the worst case emission was recorded, if it complies with the limit, the other emissions deemed to comply with the limit.



Test Mode	Channel	Polarization	Verdict
11N HT40 MIMO	LCH	Vertical	PASS



PK Result:

No.	Frequency	Reading Level	Correct Factor	Result	Limit	Margin	Remark
	[MHz]	[dBuV/m]	[dB]	[dBuV/m]	[dBuV/m]	[dB]	
1	4843.3554	45.06	5.44	50.50	74.00	-23.50	Vertical
2	7054.2568	36.77	9.25	46.02	74.00	-27.98	Vertical
3	10799.0999	36.16	12.04	48.20	74.00	-25.80	Vertical
4	12048.006	35.73	12.59	48.32	74.00	-25.68	Vertical
5	14465.1831	36.21	15.92	52.13	74.00	-21.87	Vertical
6	17024.8781	35.69	19.18	54.87	74.00	-19.13	Vertical
7	17626.8284	35.23	19.43	54.66	74.00	-19.34	Vertical

AV Result:

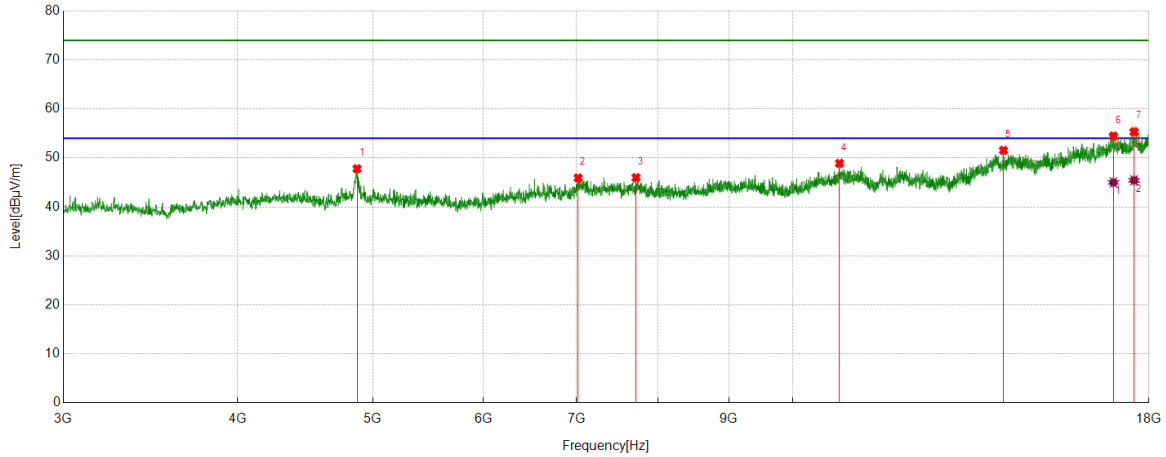
No.	Frequency	Reading Level	Correct Factor	Result	Limit	Margin	Remark
	[MHz]	[dBuV/m]	[dB]	[dBuV/m]	[dBuV/m]	[dB]	
1	17024.8781	25.88	19.18	45.06	54.00	-8.94	Vertical
2	17626.8284	25.75	19.43	45.18	54.00	-8.82	Vertical

Note: 1. Measurement = Reading Level + Correct Factor.

2. If Peak Result complies with AV limit, AV Result is deemed to comply with AV limit.
3. Peak detector: RBW: 1 MHz, VBW: 3 MHz.
4. Average detector: RBW: 1 MHz, VBW: 1/T MHz(refer to clause 7.1.).
5. For above 3GHz part, filter losses were only considered in the spurious frequency bands and the authorized band was not corrected for HPF losses.
6. Only the worst case emission was recorded, if it complies with the limit, the other emissions deemed to comply with the limit.



Test Mode	Channel	Polarization	Verdict
11N HT40 MIMO	MCH	Horizontal	PASS



PK Result:

No.	Frequency	Reading Level	Correct Factor	Result	Limit	Margin	Remark
	[MHz]	[dBuV/m]	[dB]	[dBuV/m]	[dBuV/m]	[dB]	
1	4871.4839	42.25	5.54	47.79	74.00	-26.21	Horizontal
2	7016.7521	36.62	9.28	45.90	74.00	-28.10	Horizontal
3	7719.965	37.72	8.26	45.98	74.00	-28.02	Horizontal
4	10800.9751	36.84	12.05	48.89	74.00	-25.11	Horizontal
5	14157.6447	35.65	15.88	51.53	74.00	-22.47	Horizontal
6	16976.122	34.51	19.94	54.45	74.00	-19.55	Horizontal
7	17563.0704	35.67	19.66	55.33	74.00	-18.67	Horizontal

AV Result:

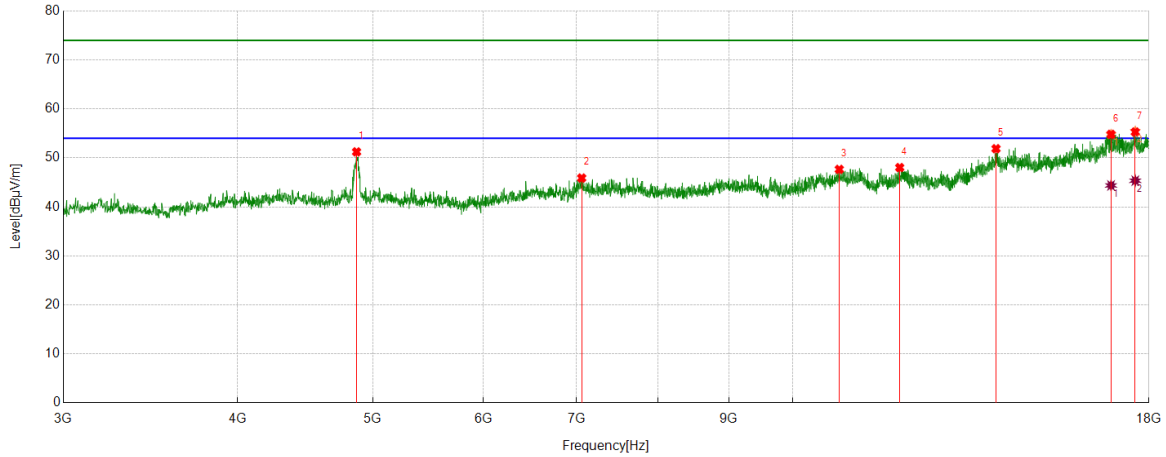
No.	Frequency	Reading Level	Correct Factor	Result	Limit	Margin	Remark
	[MHz]	[dBuV/m]	[dB]	[dBuV/m]	[dBuV/m]	[dB]	
1	16976.122	25.04	19.94	44.98	54.00	-9.02	Horizontal
2	17563.0704	25.76	19.66	45.42	54.00	-8.58	Horizontal

Note: 1. Measurement = Reading Level + Correct Factor.

2. If Peak Result complies with AV limit, AV Result is deemed to comply with AV limit.
3. Peak detector: RBW: 1 MHz, VBW: 3 MHz.
4. Average detector: RBW: 1 MHz, VBW: 1/T MHz(refer to clause 7.1.).
5. For above 3GHz part, filter losses were only considered in the spurious frequency bands and the authorized band was not corrected for HPF losses.
6. Only the worst case emission was recorded, if it complies with the limit, the other emissions deemed to comply with the limit.



Test Mode	Channel	Polarization	Verdict
11N HT40 MIMO	MCH	Vertical	PASS



PK Result:

No.	Frequency	Reading Level	Correct Factor	Result	Limit	Margin	Remark
	[MHz]	[dBuV/m]	[dB]	[dBuV/m]	[dBuV/m]	[dB]	
1	4867.7335	45.74	5.49	51.23	74.00	-22.77	Vertical
2	7058.0073	36.71	9.18	45.89	74.00	-28.11	Vertical
3	10797.2247	35.62	12.04	47.66	74.00	-26.34	Vertical
4	11929.8662	35.61	12.42	48.03	74.00	-25.97	Vertical
5	13985.1231	35.94	15.94	51.88	74.00	-22.12	Vertical
6	16908.6136	36.16	18.64	54.80	74.00	-19.20	Vertical
7	17598.6998	35.71	19.57	55.28	74.00	-18.72	Vertical

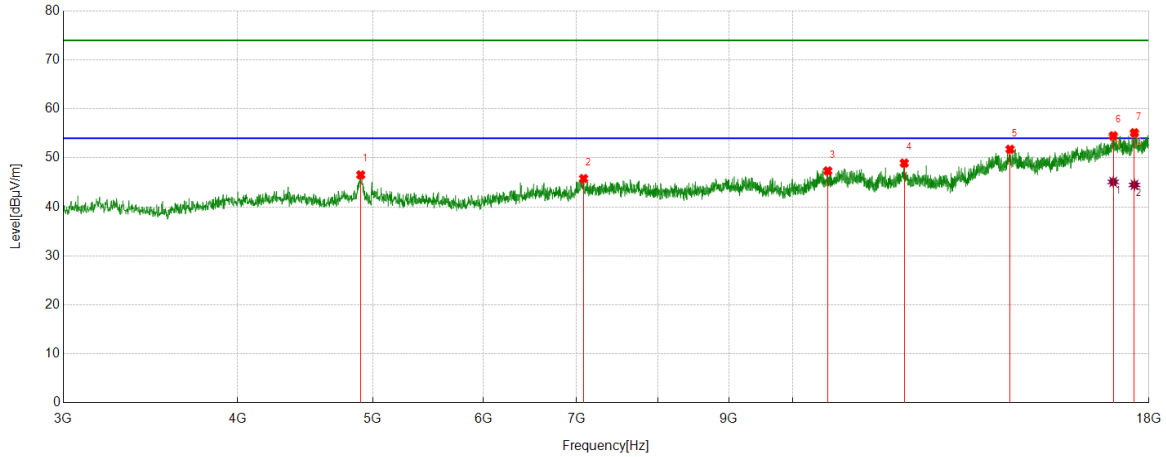
AV Result:

No.	Frequency	Reading Level	Correct Factor	Result	Limit	Margin	Remark
	[MHz]	[dBuV/m]	[dB]	[dBuV/m]	[dBuV/m]	[dB]	
1	16908.6136	25.74	18.64	44.38	54.00	-9.62	Vertical
2	17598.6998	25.78	19.57	45.35	54.00	-8.65	Vertical

- Note: 1. Measurement = Reading Level + Correct Factor.
 2. If Peak Result complies with AV limit, AV Result is deemed to comply with AV limit.
 3. Peak detector: RBW: 1 MHz, VBW: 3 MHz.
 4. Average detector: RBW: 1 MHz, VBW: 1/T MHz(refer to clause 7.1.).
 5. For above 3GHz part, filter losses were only considered in the spurious frequency bands and the authorized band was not corrected for HPF losses.
 6. Only the worst case emission was recorded, if it complies with the limit, the other emissions deemed to comply with the limit.



Test Mode	Channel	Polarization	Verdict
11N HT40 MIMO	HCH	Horizontal	PASS



PK Result:

No.	Frequency	Reading Level	Correct Factor	Result	Limit	Margin	Remark
	[MHz]	[dBuV/m]	[dB]	[dBuV/m]	[dBuV/m]	[dB]	
1	4901.4877	41.19	5.35	46.54	74.00	-27.46	Horizontal
2	7080.5101	36.34	9.44	45.78	74.00	-28.22	Horizontal
3	10594.6993	35.51	11.83	47.34	74.00	-26.66	Horizontal
4	12019.8775	36.14	12.79	48.93	74.00	-25.07	Horizontal
5	14313.2892	35.82	15.93	51.75	74.00	-22.25	Horizontal
6	16970.4963	34.51	19.99	54.50	74.00	-19.50	Horizontal
7	17574.3218	35.22	19.90	55.12	74.00	-18.88	Horizontal

AV Result:

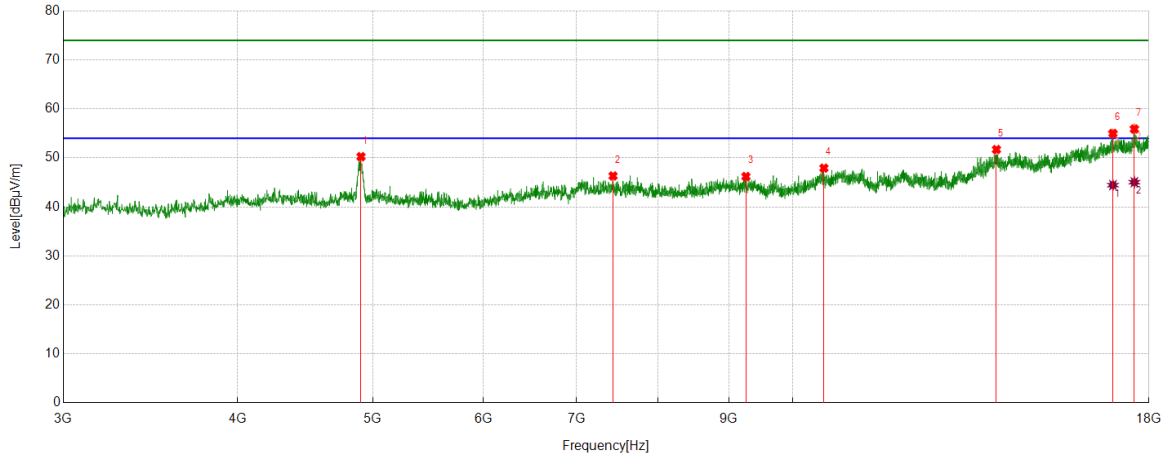
No.	Frequency	Reading Level	Correct Factor	Result	Limit	Margin	Remark
	[MHz]	[dBuV/m]	[dB]	[dBuV/m]	[dBuV/m]	[dB]	
1	16970.4963	25.11	19.99	45.10	54.00	-8.90	Horizontal
2	17574.3218	24.60	19.90	44.50	54.00	-9.50	Horizontal

Note: 1. Measurement = Reading Level + Correct Factor.

2. If Peak Result complies with AV limit, AV Result is deemed to comply with AV limit.
3. Peak detector: RBW: 1 MHz, VBW: 3 MHz.
4. Average detector: RBW: 1 MHz, VBW: 1/T MHz(refer to clause 7.1.).
5. For above 3GHz part, filter losses were only considered in the spurious frequency bands and the authorized band was not corrected for HPF losses.
6. Only the worst case emission was recorded, if it complies with the limit, the other emissions deemed to comply with the limit.



Test Mode	Channel	Polarization	Verdict
11N HT40 MIMO	HCH	Vertical	PASS



PK Result:

No.	Frequency	Reading Level	Correct Factor	Result	Limit	Margin	Remark
	[MHz]	[dBuV/m]	[dB]	[dBuV/m]	[dBuV/m]	[dB]	
1	4903.3629	44.89	5.36	50.25	74.00	-23.75	Vertical
2	7433.0541	37.79	8.53	46.32	74.00	-27.68	Vertical
3	9255.782	36.90	9.30	46.20	74.00	-27.80	Vertical
4	10527.1909	36.15	11.76	47.91	74.00	-26.09	Vertical
5	13994.4993	35.86	15.85	51.71	74.00	-22.29	Vertical
6	16961.1201	35.21	19.78	54.99	74.00	-19.01	Vertical
7	17572.4466	35.92	19.97	55.89	74.00	-18.11	Vertical

AV Result:

No.	Frequency	Reading Level	Correct Factor	Result	Limit	Margin	Remark
	[MHz]	[dBuV/m]	[dB]	[dBuV/m]	[dBuV/m]	[dB]	
1	16961.1201	24.66	19.78	44.44	54.00	-9.56	Vertical
2	17572.4466	25.06	19.97	45.03	54.00	-8.97	Vertical

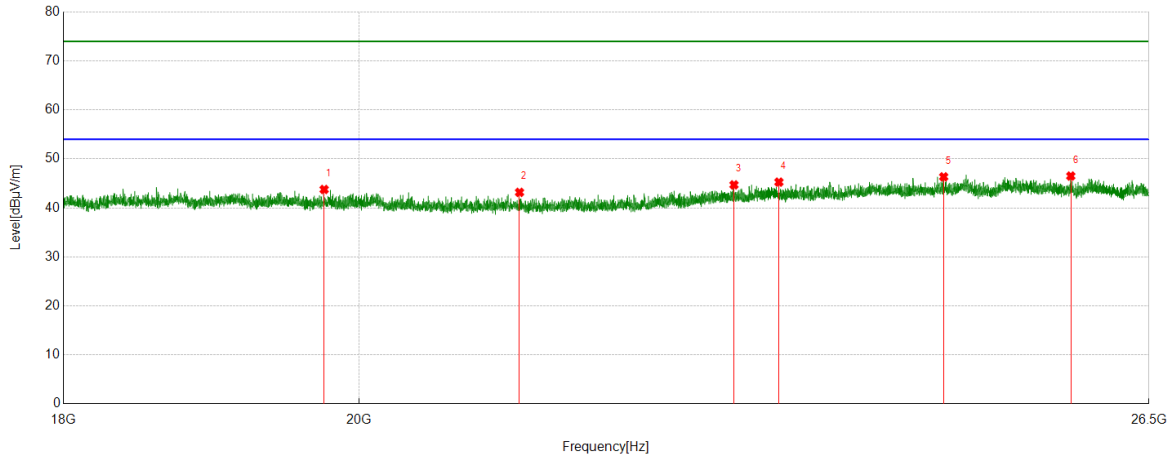
- Note: 1. Measurement = Reading Level + Correct Factor.
 2. If Peak Result complies with AV limit, AV Result is deemed to comply with AV limit.
 3. Peak detector: RBW: 1 MHz, VBW: 3 MHz.
 4. Average detector: RBW: 1 MHz, VBW: 1/T MHz(refer to clause 7.1.).
 5. For above 3GHz part, filter losses were only considered in the spurious frequency bands and the authorized band was not corrected for HPF losses.
 6. Only the worst case emission was recorded, if it complies with the limit, the other emissions deemed to comply with the limit.



Part 3: 18GHz~26.5GHz

SPURIOUS EMISSIONS 18GHz TO 26.5GHz (WORST-CASE CONFIGURATION)

Test Mode	Channel	Polarization	Verdict
11B	MCH	Horizontal	PASS

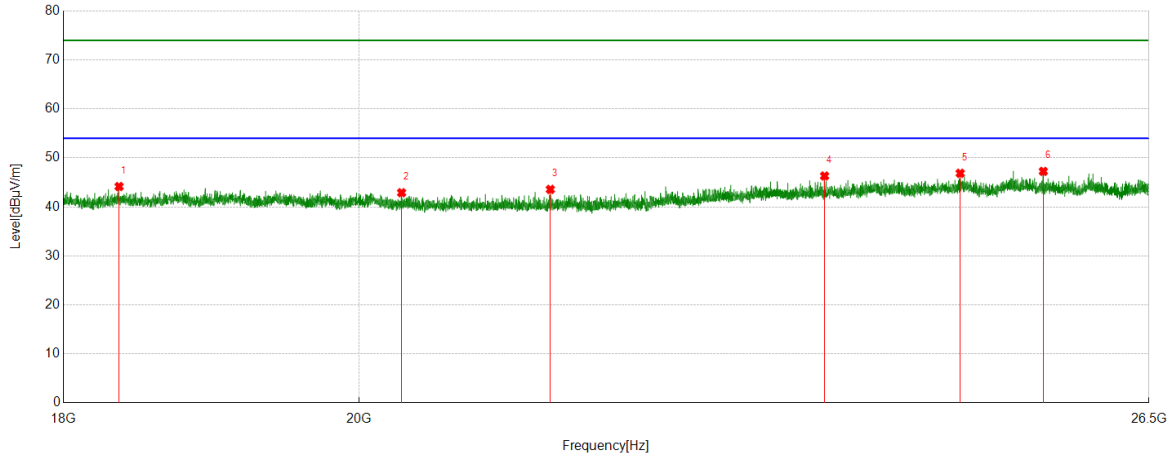


No.	Frequency	Reading Level	Correct Factor	Result	Limit	Margin	Remark
	[MHz]	[dBuV/m]	[dB]	[dBuV/m]	[dBuV/m]	[dB]	
1	19752.8753	49.13	-5.37	43.76	74.00	-30.24	Peak
2	21176.7677	49.12	-5.95	43.17	74.00	-30.83	Peak
3	22858.2358	48.52	-3.82	44.70	74.00	-29.30	Peak
4	23227.1727	48.64	-3.38	45.26	74.00	-28.74	Peak
5	24631.5132	49.46	-3.12	46.34	74.00	-27.66	Peak
6	25772.3272	49.40	-2.90	46.50	74.00	-27.50	Peak

- Note: 1. If Peak Result complies with AV limit, AV Result is deemed to comply with AV limit.
 2. Test setup: RBW: 1 MHz, VBW: 3 MHz, Sweep time: auto.
 3. Measurement = Reading Level + Correct Factor.
 4. Only the worst case emission was recorded, if it complies with the limit, the other emissions deemed to comply with the limit.



Test Mode	Channel	Polarization	Verdict
11B	MCH	Vertical	PASS



No.	Frequency	Reading Level	Correct Factor	Result	Limit	Margin	Remark
	[MHz]	[dBuV/m]	[dB]	[dBuV/m]	[dBuV/m]	[dB]	
1	18361.2861	50.86	-6.70	44.16	74.00	-29.84	Peak
2	20305.4305	48.34	-5.45	42.89	74.00	-31.11	Peak
3	21410.5411	49.43	-5.86	43.57	74.00	-30.43	Peak
4	23608.0108	49.40	-3.09	46.31	74.00	-27.69	Peak
5	24776.8777	50.15	-3.29	46.86	74.00	-27.14	Peak
6	25521.5522	50.41	-3.16	47.25	74.00	-26.75	Peak

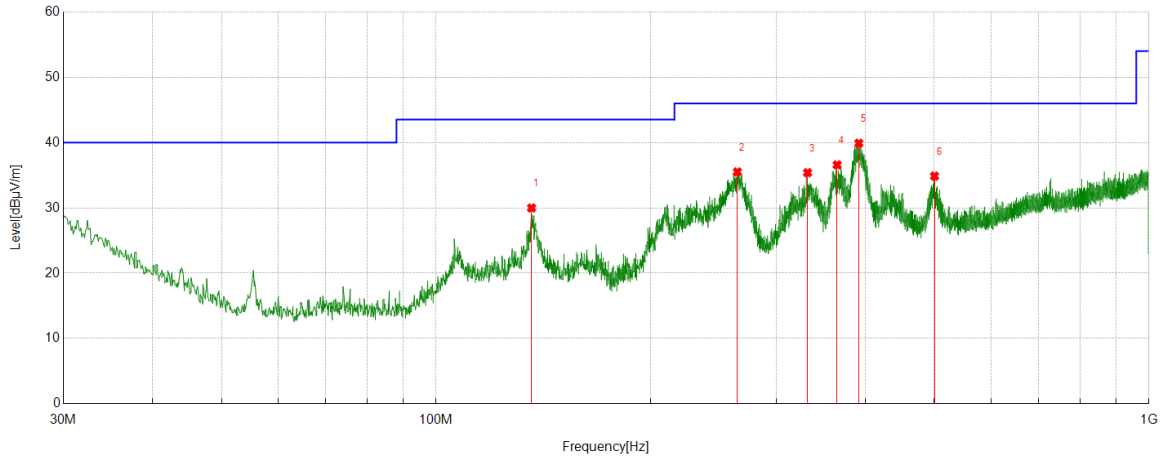
- Note: 1. If Peak Result complies with AV limit, AV Result is deemed to comply with AV limit.
 2. Test setup: RBW: 1 MHz, VBW: 3 MHz, Sweep time: auto.
 3. Measurement = Reading Level + Correct Factor.
 4. Only the worst case emission was recorded, if it complies with the limit, the other emissions deemed to comply with the limit.



Part 4: 30MHz~1GHz

SPURIOUS EMISSIONS 30M TO 1GHz (WORST-CASE CONFIGURATION)

Test Mode	Channel	Polarization	Verdict
11B	MCH	Horizontal	PASS

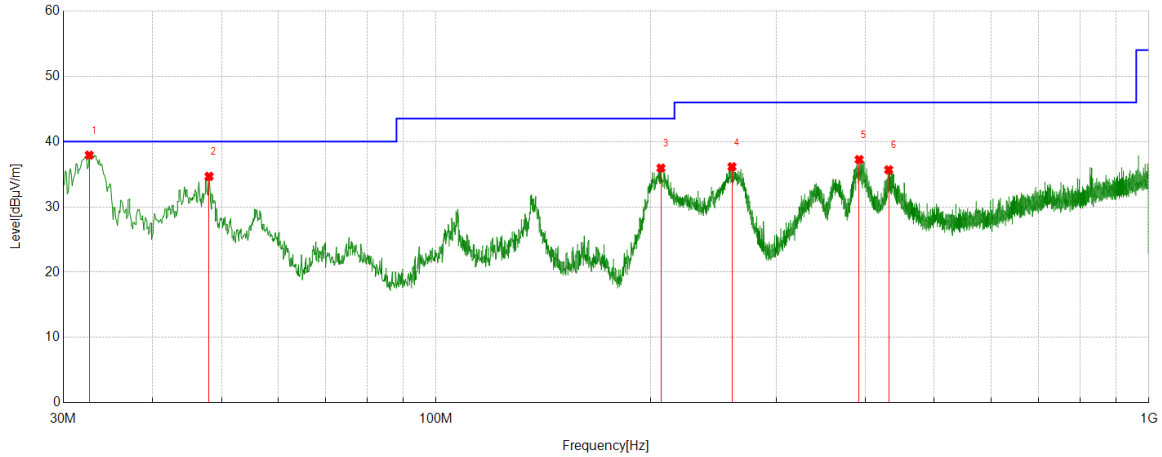


No.	Frequency	Reading Level	Correct Factor	Result	Limit	Margin	Remark
	[MHz]	[dBuV/m]	[dB]	[dBuV/m]	[dBuV/m]	[dB]	
1	136.1286	9.19	20.80	29.99	43.50	-13.51	Peak
2	264.6665	15.46	20.05	35.51	46.00	-10.49	Peak
3	331.9912	13.53	21.86	35.39	46.00	-10.61	Peak
4	365.2655	13.95	22.64	36.59	46.00	-9.41	Peak
5	391.8462	16.57	23.33	39.90	46.00	-6.10	Peak
6	500.303	8.58	26.29	34.87	46.00	-11.13	Peak

- Note: 1. If Peak Result complies with QP limit, QP Result is deemed to comply with QP limit.
 2. Test setup: RBW: 120 kHz, VBW: 300 kHz, Sweep time: auto.
 3. Measurement = Reading Level + Correct Factor.



Test Mode	Channel	Polarization	Verdict
11B	MCH	Vertical	PASS



No.	Frequency	Reading Level	Correct Factor	Result	Limit	Margin	Remark
	[MHz]	[dBuV/m]	[dB]	[dBuV/m]	[dBuV/m]	[dB]	
1	32.6193	11.98	25.94	37.92	40.00	-2.08	Peak
2	48.0438	18.84	15.83	34.67	40.00	-5.33	Peak
3	206.7517	15.98	19.96	35.94	43.50	-7.56	Peak
4	260.107	16.30	19.84	36.14	46.00	-9.86	Peak
5	392.2342	13.90	23.34	37.24	46.00	-8.76	Peak
6	431.4261	11.04	24.64	35.68	46.00	-10.32	Peak

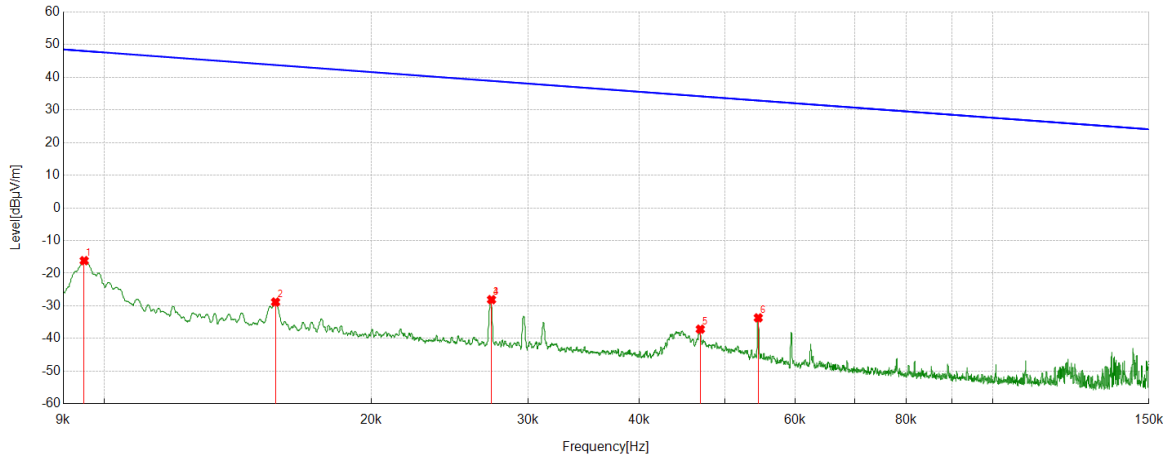
- Note: 1. If Peak Result complies with QP limit, QP Result is deemed to comply with QP limit.
 2. Test setup: RBW: 120 kHz, VBW: 300 kHz, Sweep time: auto.
 3. Measurement = Reading Level + Correct Factor.



Part 5: 9kHz~30MHz

SPURIOUS EMISSIONS Below 30MHz (WORST CASE CONFIGURATION-FACE ON)

Test Mode	Channel	Frequency Range	Verdict
11B	MCH	9kHz~150kHz	PASS

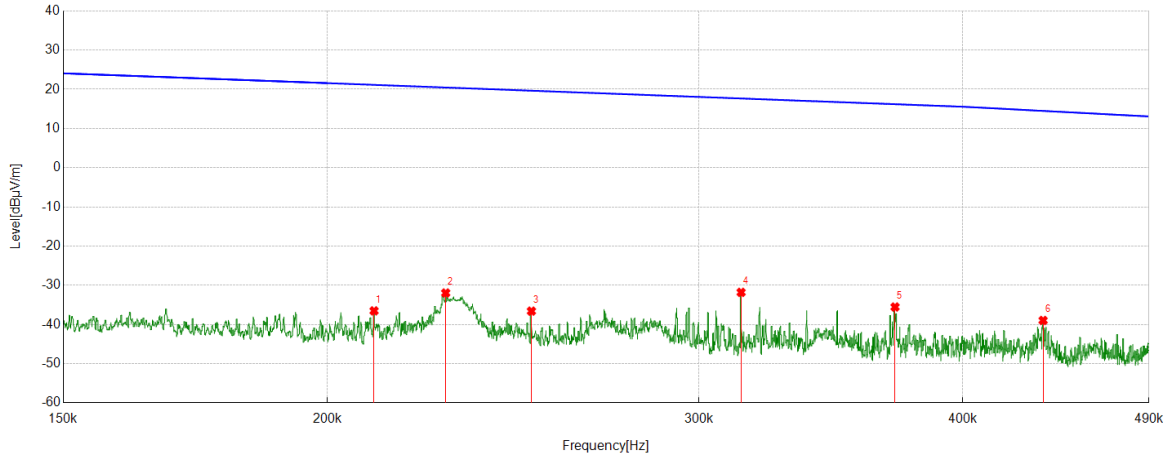


No.	Frequency	Reading Level	Correct Factor	Result	Limit	Margin	Remark
	[MHz]	[dBuV/m]	[dB]	[dBuV/m]	[dBuV/m]	[dB]	
1	0.0095	45.84	-61.99	-16.15	48.04	-64.19	Peak
2	0.0156	33.11	-61.93	-28.82	43.72	-72.54	Peak
3	0.0273	33.73	-61.82	-28.09	38.89	-66.98	Peak
4	0.0273	33.73	-61.82	-28.09	38.89	-66.98	Peak
5	0.0469	24.65	-61.79	-37.14	34.18	-71.32	Peak
6	0.0545	28.15	-61.81	-33.66	32.87	-66.53	Peak

- Note: 1. Measurement = Reading Level + Correct Factor.
 2. If Peak Result complies with AV and QP limit, AV and QP Result are deemed to comply with AV limit.
 3. All 3 polarizations(Horizontal, Face-on and Face-off) of the loop antenna had been tested, but only the worst data recorded in the report.



Test Mode	Channel	Frequency Range	Verdict
11B	MCH	150kHz~490kHz	PASS



No.	Frequency	Reading Level	Correct Factor	Result	Limit	Margin	Remark
	[MHz]	[dBuV/m]	[dB]	[dBuV/m]	[dBuV/m]	[dB]	
1	0.2105	25.41	-61.93	-36.52	21.13	-57.65	Peak
2	0.2276	29.97	-61.93	-31.96	20.46	-52.42	Peak
3	0.2499	25.35	-61.94	-36.59	19.65	-56.24	Peak
4	0.3141	30.17	-61.97	-31.80	17.66	-49.46	Peak
5	0.3715	26.43	-61.97	-35.54	16.20	-51.74	Peak
6	0.4366	22.99	-61.96	-38.97	14.49	-53.46	Peak

- Note: 1. Measurement = Reading Level + Correct Factor.
 2. If Peak Result complies with AV and QP limit, AV and QP Result are deemed to comply with AV limit.
 3. All 3 polarizations(Horizontal, Face-on and Face-off) of the loop antenna had been tested, but only the worst data recorded in the report.