

Quick Setup Guide

1080P Wi-Fi Pan/Tilt Camera

Model: ASH21-V3



How can we help?

We are dedicated to providing the highest quality support to our customers and are available 7 days a week.

[Online Video Tutorial & Quick Start Guide](#)
amcrest.com/support

Need help?
amcrest.com/contact
1-888-212-7538

2

01 Setting Up the Camera

The Amcrest Smart Home app connects your Amcrest camera to your Android or iOS mobile device, ensuring you are always connected to what matters most.



To get the app, search for **"Amcrest Smart Home"** in the Google Play or App Store.

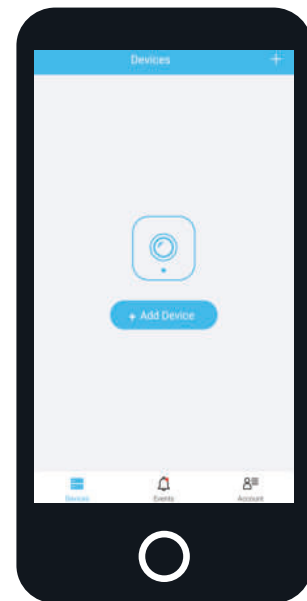
Note: In order to add device on the **Amcrest View Pro** app you must complete setup on **Amcrest Smart Home** app first. Then follow link below: amcrest.com/usingviewpro

3

Connecting to the Smart Home app

Open the Amcrest Smart Home app and tap on **"Register"** to register an account. After registering an account, log into the app and tap on **"Add Device"**.

You will need to allow all notification and location permissions to allow the camera to connect to your mobile device.



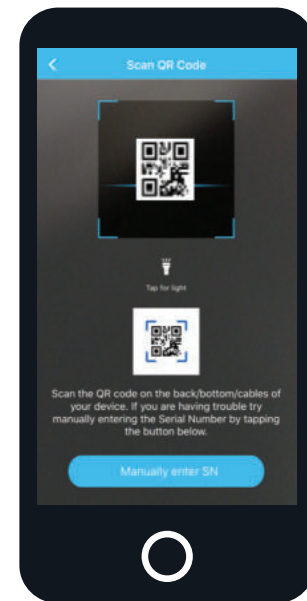
4

Scan the QR Code or Manually Enter the S/N

Scan the QR code located on the bottom of your camera.

If you are unable to scan the QR code you can manually enter the serial number by tapping **"Manually enter SN"**.

If you are manually entering your SN you will have to select the device you are adding.



5

Choose Your Setup Method

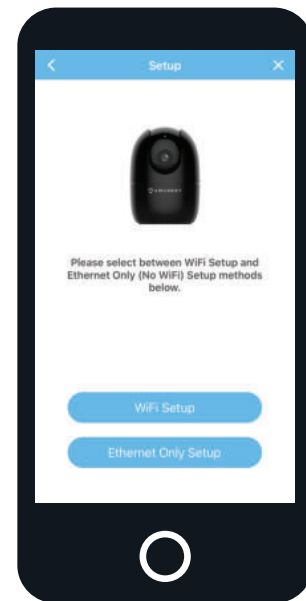
Wi-Fi (Recommended)

This method allows you to connect the device to your network via Wi-Fi using the camera's built-in Wi-Fi hotspot.

Ethernet Only Setup

This method uses an Ethernet connection to connect your device to the network.

The Ethernet setup method does not use Wi-Fi. If you wish to enable Wi-Fi, you will need to do so after initial setup.



6

02

How to Use the Camera

Devices

Displays added devices in the app.

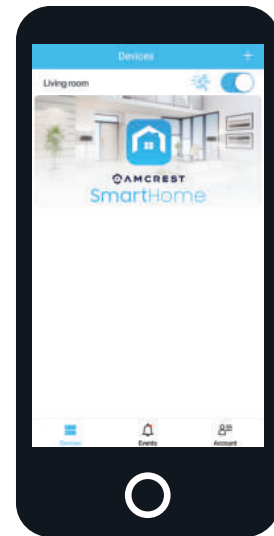
Events

Provides quick access to motion events and alerts.

Account

Manage account settings and information.

The main screen on the Amcrest Smart Home app will be your Devices menu. This menu displays all of your added devices.



7

Baby Monitor

Baby Monitor mode turns your device into an active monitor to view, listen, and receive notifications directly from the Smart Home app. You can enable Baby Monitor mode directly from the live-view screen of the app.

Always On - This allows you to actively listen to audio from the camera

Auto - Audio will turn on once it surpasses the squelch threshold

Off - Disables the audio



8

Storage Options

Use the Amcrest Smart Home premium cloud service to record and playback events from a secure, offsite location. A MicroSD card can also be used to record and playback events locally.

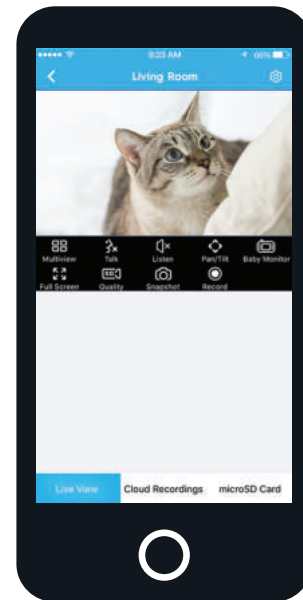


Note: The microSD card can be found by raising the front of the camera. For more information on how to insert a microSD card please visit: amcrest.com/support

9

Smart Tracking

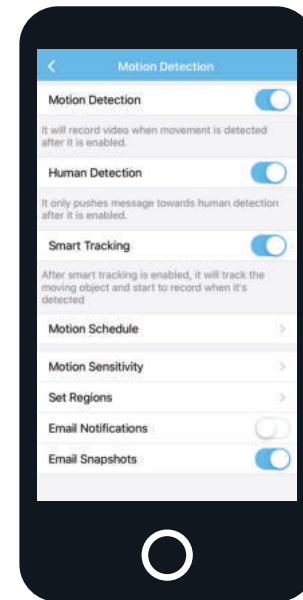
Smart Tracking allows the camera to track objects in motion. When enabled, the camera will begin to automatically record and follow the object in motion.



10

Motion and Human Detection

Motion Detection allows you to receive alerts and automatically record anytime your camera detects motion. Enable **Human Detection** to only receive alerts when a human figure is detected.

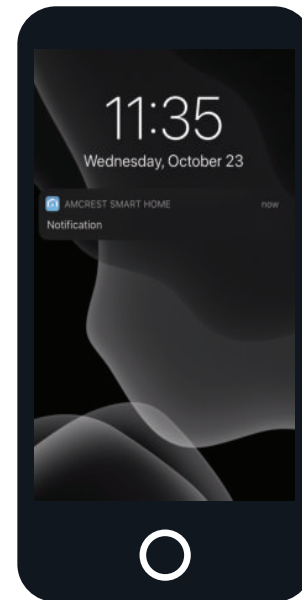


11

Smart Notifications

Receive Email and push notifications directly to your smartphone using the Amcrest Smart Home app.

Note: To learn more about Smart Notifications visit: amcrest.com/smartnotifications



12