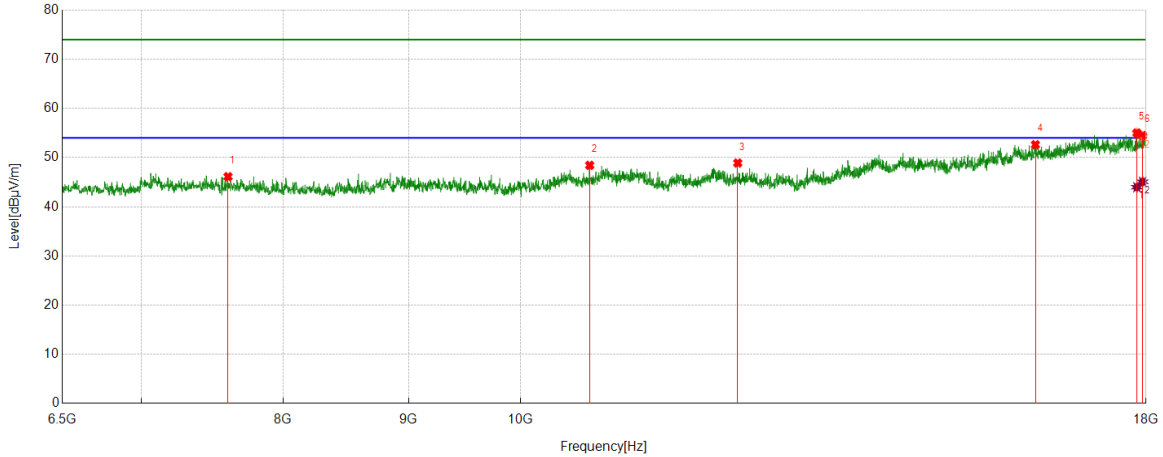




PART II: For 6.5GHz to 18GHz:

Test Mode	Channel	Polarization	Verdict
11A	5180	Horizontal	PASS

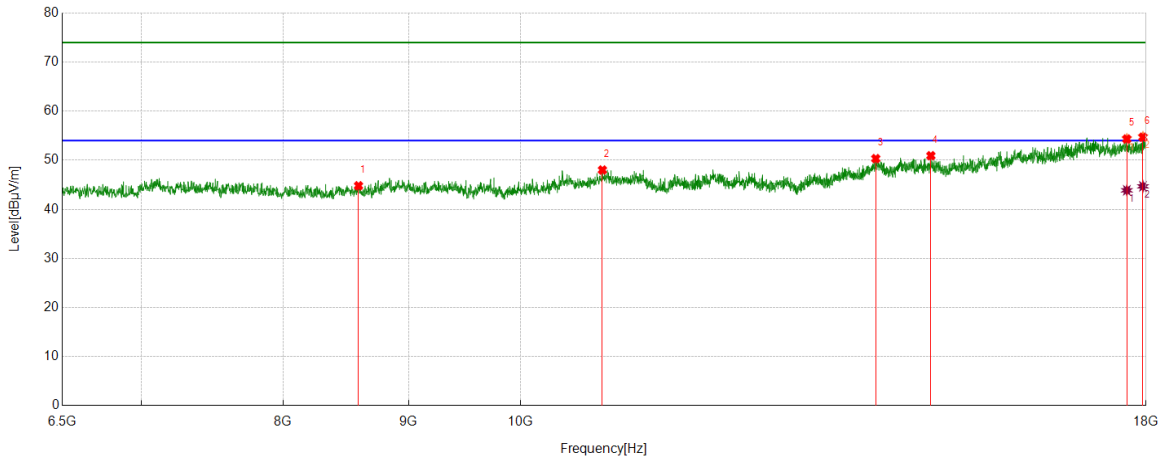


No.	Frequency	Reading Level	Correct Factor	Result	Limit	Margin	Remark
	(MHz)	(dBuV/m)	(dB)	(dBuV/m)	(dBuV/m)	(dB)	
1	7596.5161	37.04	9.08	46.12	74.00	-27.88	peak
2	10671.3619	36.60	11.83	48.43	74.00	-25.57	peak
3	12264.3774	36.69	12.21	48.90	74.00	-25.10	peak
4	16222.9538	34.57	18.05	52.62	74.00	-21.38	peak
5	17846.6411	35.79	19.21	55.00	74.00	-19.00	peak
		24.77	19.21	43.98	54.00	-10.02	average
6	17942.4904	35.37	19.12	54.49	74.00	-19.51	peak
		25.97	19.12	45.09	54.00	-8.91	average

- Remark: 1. Measurement = Reading Level + Correct Factor.
 2. If Peak Result complies with AV limit, AV Result is deemed to comply with AV limit.
 3. Test setup: RBW: 1 MHz, VBW: 3 MHz, Sweep time: auto.
 4. Peak: Peak detector.
 5. AVG: VBW refer to section 6.2.
 6. For above 6.5GHz part, filter losses were only considered in the spurious frequency bands and the authorized band were not corrected for HPF losses. The proper operation of the transmitter prior to adding the filter to the measurement chain.
 7. Only the worst case emission was recorded, if it complies with the limit, the other emissions deemed to comply with the limit.



Test Mode	Channel	Polarization	Verdict
11A	5180	Vertical	PASS

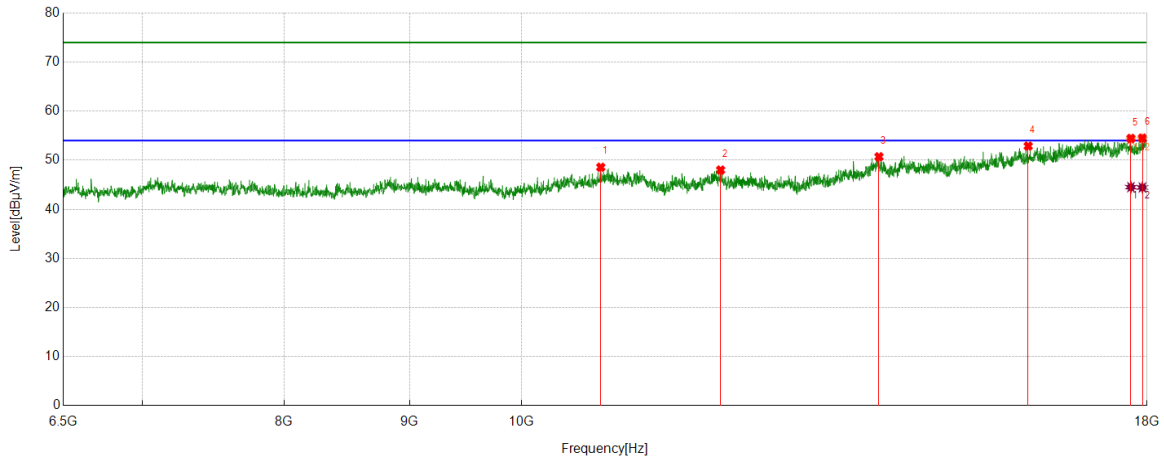


No.	Frequency	Reading Level	Correct Factor	Result	Limit	Margin	Remark
	(MHz)	(dBuV/m)	(dB)	(dBuV/m)	(dBuV/m)	(dB)	
1	8587.5979	36.27	8.53	44.80	74.00	-29.20	peak
2	10799.8	35.96	12.05	48.01	74.00	-25.99	peak
3	13962.8271	35.43	14.90	50.33	74.00	-23.67	peak
4	14704.7008	36.06	14.86	50.92	74.00	-23.08	peak
5	17677.9463	35.22	19.10	54.32	74.00	-19.68	peak
		24.77	19.10	43.87	54.00	-10.13	average
6	17948.2414	35.65	19.04	54.69	74.00	-19.31	peak
		25.64	19.04	44.68	54.00	-9.32	average

- Remark: 1. Measurement = Reading Level + Correct Factor.
 2. If Peak Result complies with AV limit, AV Result is deemed to comply with AV limit.
 3. Test setup: RBW: 1 MHz, VBW: 3 MHz, Sweep time: auto.
 4. Peak: Peak detector.
 5. AVG: VBW refer to section 6.2.
 6. For above 6.5GHz part, filter losses were only considered in the spurious frequency bands and the authorized band were not corrected for HPF losses. The proper operation of the transmitter prior to adding the filter to the measurement chain.
 7. Only the worst case emission was recorded, if it complies with the limit, the other emissions deemed to comply with the limit.



Test Mode	Channel	Polarization	Verdict
11A	5200	Horizontal	PASS

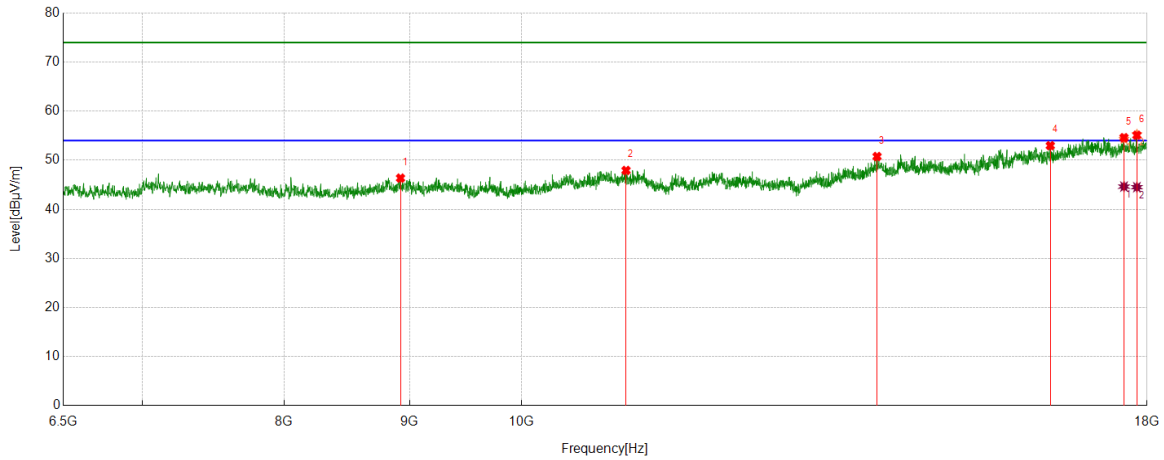


No.	Frequency	Reading Level	Correct Factor	Result	Limit	Margin	Remark
	(MHz)	(dBuV/m)	(dB)	(dBuV/m)	(dBuV/m)	(dB)	
1	10799.8	35.96	12.05	48.01	74.00	-25.99	peak
2	13962.8271	35.43	14.90	50.33	74.00	-23.67	peak
3	14704.7008	36.06	14.86	50.92	74.00	-23.08	peak
4	15920.07	34.34	17.81	52.15	74.00	-21.85	peak
5	17028.088	35.07	19.47	54.54	74.00	-19.46	peak
		24.92	19.60	44.52	54.00	-9.48	average
6	17921.4036	35.13	19.38	54.51	74.00	-19.49	peak
		25.07	19.38	44.45	54.00	-9.55	average

- Remark: 1. Measurement = Reading Level + Correct Factor.
 2. If Peak Result complies with AV limit, AV Result is deemed to comply with AV limit.
 3. Test setup: RBW: 1 MHz, VBW: 3 MHz, Sweep time: auto.
 4. Peak: Peak detector.
 5. AVG: VBW refer to section 6.2.
 6. For above 6.5GHz part, filter losses were only considered in the spurious frequency bands and the authorized band were not corrected for HPF losses. The proper operation of the transmitter prior to adding the filter to the measurement chain.
 7. Only the worst case emission was recorded, if it complies with the limit, the other emissions deemed to comply with the limit.



Test Mode	Channel	Polarization	Verdict
11A	5200	Vertical	PASS

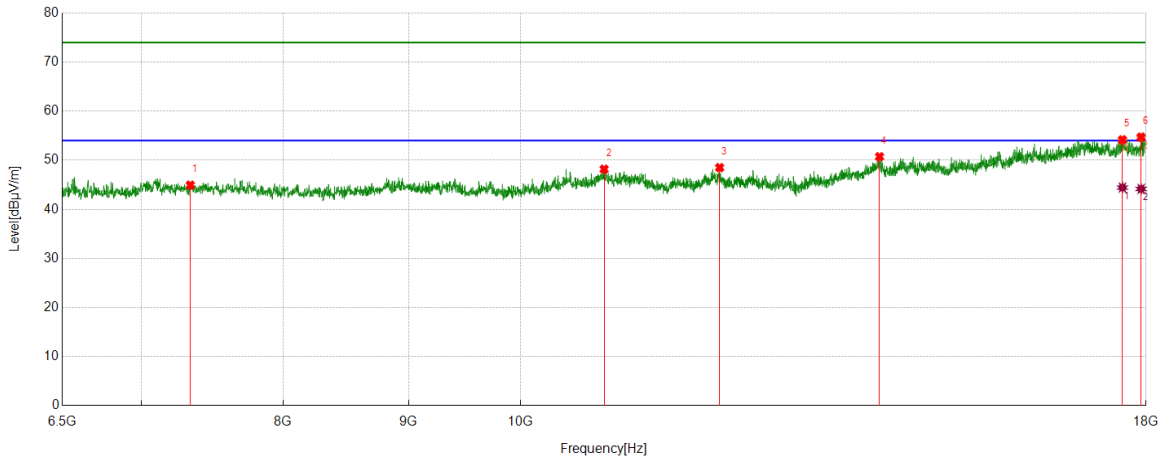


No.	Frequency	Reading Level	Correct Factor	Result	Limit	Margin	Remark
	(MHz)	(dBuV/m)	(dB)	(dBuV/m)	(dBuV/m)	(dB)	
1	8924.9875	36.76	9.60	46.36	74.00	-27.64	peak
2	11031.7553	35.64	12.28	47.92	74.00	-26.08	peak
3	13966.6611	35.87	14.89	50.76	74.00	-23.24	peak
4	16435.7393	36.12	16.85	52.97	74.00	-21.03	peak
5	17614.6858	36.01	18.58	54.59	74.00	-19.41	peak
		26.05	18.58	44.63	54.00	-9.37	average
6	17829.3882	35.29	19.80	55.09	74.00	-18.91	peak
		24.71	19.80	44.51	54.00	-9.49	average

- Remark: 1. Measurement = Reading Level + Correct Factor.
 2. If Peak Result complies with AV limit, AV Result is deemed to comply with AV limit.
 3. Test setup: RBW: 1 MHz, VBW: 3 MHz, Sweep time: auto.
 4. Peak: Peak detector.
 5. AVG: VBW refer to section 6.2.
 6. For above 6.5GHz part, filter losses were only considered in the spurious frequency bands and the authorized band were not corrected for HPF losses. The proper operation of the transmitter prior to adding the filter to the measurement chain.
 7. Only the worst case emission was recorded, if it complies with the limit, the other emissions deemed to comply with the limit.



Test Mode	Channel	Polarization	Verdict
11A	5240	Horizontal	PASS

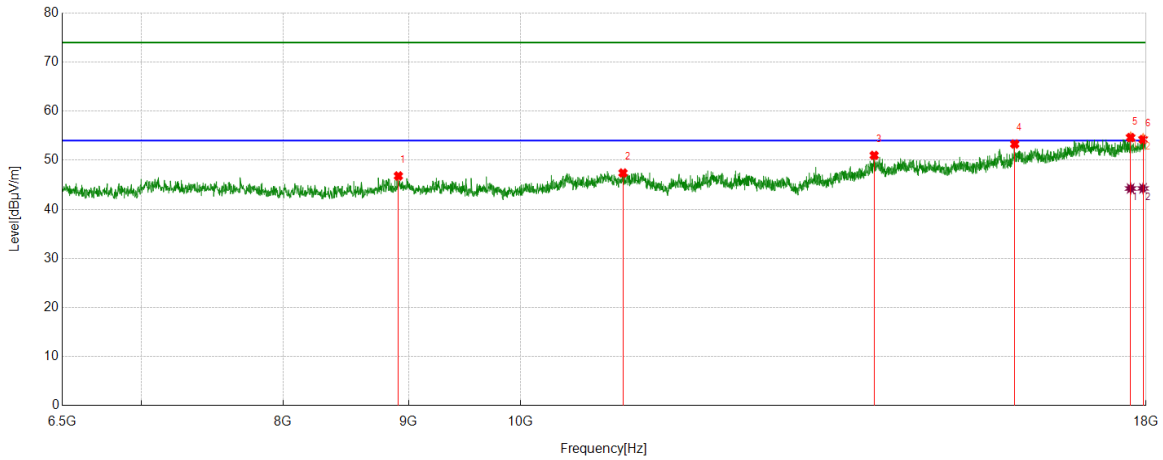


No.	Frequency	Reading Level	Correct Factor	Result	Limit	Margin	Remark
	(MHz)	(dBuV/m)	(dB)	(dBuV/m)	(dBuV/m)	(dB)	
1	7331.972	36.00	8.93	44.93	74.00	-29.07	peak
2	10817.0528	36.01	12.17	48.18	74.00	-25.82	peak
3	12057.3429	35.93	12.57	48.50	74.00	-25.50	peak
4	14012.6688	35.35	15.38	50.73	74.00	-23.27	peak
5	17605.1008	35.48	18.69	54.17	74.00	-19.83	peak
		25.74	18.69	44.43	54.00	-9.57	average
6	17917.5696	35.40	19.31	54.71	74.00	-19.29	peak
		24.85	19.31	44.16	54.00	-9.84	average

- Remark: 1. Measurement = Reading Level + Correct Factor.
 2. If Peak Result complies with AV limit, AV Result is deemed to comply with AV limit.
 3. Test setup: RBW: 1 MHz, VBW: 3 MHz, Sweep time: auto.
 4. Peak: Peak detector.
 5. AVG: VBW refer to section 6.2.
 6. For above 6.5GHz part, filter losses were only considered in the spurious frequency bands and the authorized band were not corrected for HPF losses. The proper operation of the transmitter prior to adding the filter to the measurement chain.
 7. Only the worst case emission was recorded, if it complies with the limit, the other emissions deemed to comply with the limit.



Test Mode	Channel	Polarization	Verdict
11A	5240	Vertical	PASS

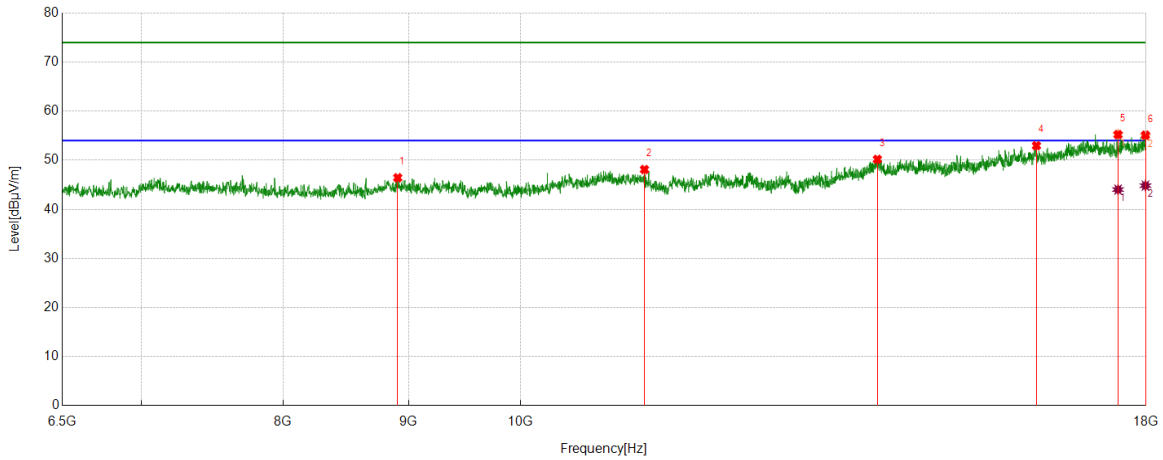


No.	Frequency	Reading Level	Correct Factor	Result	Limit	Margin	Remark
	(MHz)	(dBuV/m)	(dB)	(dBuV/m)	(dBuV/m)	(dB)	
1	8915.4026	37.19	9.61	46.80	74.00	-27.20	peak
2	11010.6684	34.97	12.43	47.40	74.00	-26.60	peak
3	13941.7403	36.04	14.95	50.99	74.00	-23.01	peak
4	15910.4851	35.74	17.56	53.30	74.00	-20.70	peak
5	17741.2069	35.43	19.19	54.62	74.00	-19.38	peak
		25.05	19.19	44.24	54.00	-9.76	average
6	17950.1584	35.20	19.01	54.21	74.00	-19.79	peak
		25.25	19.01	44.26	54.00	-9.74	average

- Remark: 1. Measurement = Reading Level + Correct Factor.
 2. If Peak Result complies with AV limit, AV Result is deemed to comply with AV limit.
 3. Test setup: RBW: 1 MHz, VBW: 3 MHz, Sweep time: auto.
 4. Peak: Peak detector.
 5. AVG: VBW refer to section 6.2.
 6. For above 6.5GHz part, filter losses were only considered in the spurious frequency bands and the authorized band were not corrected for HPF losses. The proper operation of the transmitter prior to adding the filter to the measurement chain.
 7. Only the worst case emission was recorded, if it complies with the limit, the other emissions deemed to comply with the limit.



Test Mode	Channel	Polarization	Verdict
11A	5260	Horizontal	PASS

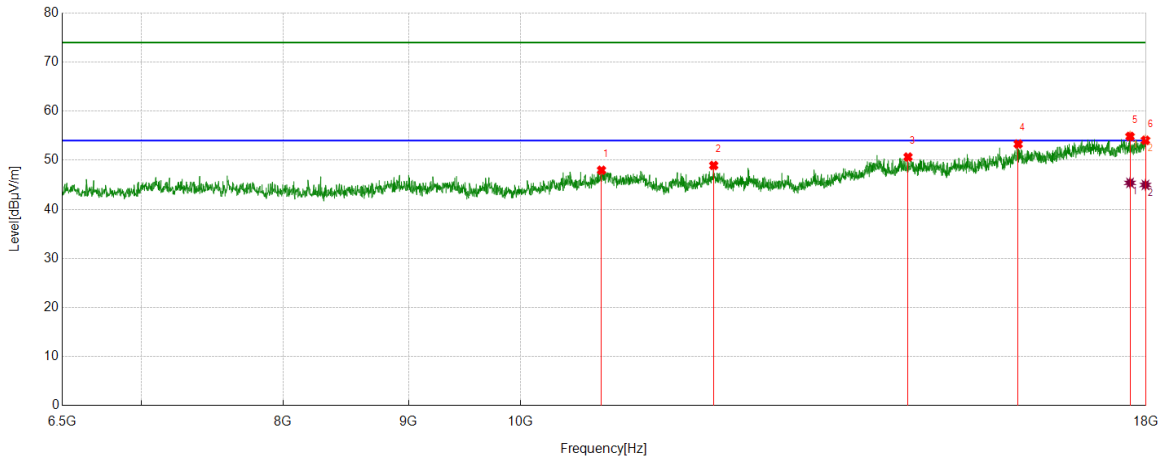


No.	Frequency	Reading Level	Correct Factor	Result	Limit	Margin	Remark
	(MHz)	(dBuV/m)	(dB)	(dBuV/m)	(dBuV/m)	(dB)	
1	8909.6516	36.95	9.49	46.44	74.00	-27.56	peak
2	11234.9558	36.37	11.74	48.11	74.00	-25.89	peak
3	13983.914	35.04	15.15	50.19	74.00	-23.81	peak
4	16238.2897	34.75	18.21	52.96	74.00	-21.04	peak
5	17532.2554	37.07	18.16	55.23	74.00	-18.77	peak
		25.86	18.16	44.02	54.00	-9.98	average
6	17990.4151	35.54	19.58	55.12	74.00	-18.88	peak
		25.25	19.58	44.83	54.00	-9.17	average

- Remark: 1. Measurement = Reading Level + Correct Factor.
 2. If Peak Result complies with AV limit, AV Result is deemed to comply with AV limit.
 3. Test setup: RBW: 1 MHz, VBW: 3 MHz, Sweep time: auto.
 4. Peak: Peak detector.
 5. AVG: VBW refer to section 6.2.
 6. For above 6.5GHz part, filter losses were only considered in the spurious frequency bands and the authorized band were not corrected for HPF losses. The proper operation of the transmitter prior to adding the filter to the measurement chain.
 7. Only the worst case emission was recorded, if it complies with the limit, the other emissions deemed to comply with the limit.



Test Mode	Channel	Polarization	Verdict
11A	5260	Vertical	PASS

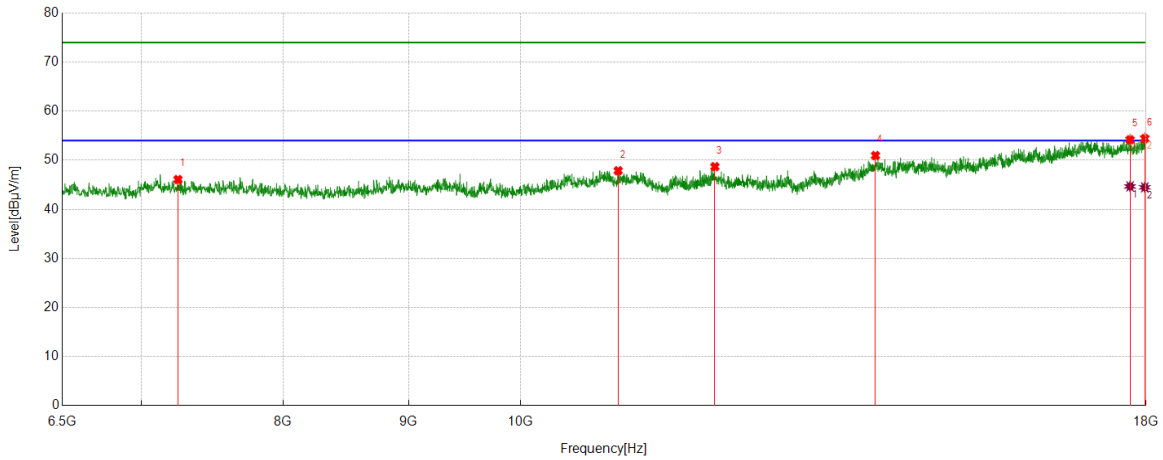


No.	Frequency	Reading Level	Correct Factor	Result	Limit	Margin	Remark
	(MHz)	(dBuV/m)	(dB)	(dBuV/m)	(dBuV/m)	(dB)	
1	10790.215	35.95	12.01	47.96	74.00	-26.04	peak
2	11990.2484	36.05	12.88	48.93	74.00	-25.07	peak
3	14392.232	35.89	14.77	50.66	74.00	-23.34	peak
4	15962.2437	36.52	16.78	53.30	74.00	-20.70	peak
5	17731.6219	35.31	19.55	54.86	74.00	-19.14	peak
		25.84	19.55	45.39	54.00	-8.61	average
6	17990.4151	34.48	19.58	54.06	74.00	-19.94	peak
		25.39	19.58	44.97	54.00	-9.03	average

- Remark: 1. Measurement = Reading Level + Correct Factor.
 2. If Peak Result complies with AV limit, AV Result is deemed to comply with AV limit.
 3. Test setup: RBW: 1 MHz, VBW: 3 MHz, Sweep time: auto.
 4. Peak: Peak detector.
 5. AVG: VBW refer to section 6.2.
 6. For above 6.5GHz part, filter losses were only considered in the spurious frequency bands and the authorized band were not corrected for HPF losses. The proper operation of the transmitter prior to adding the filter to the measurement chain.
 7. Only the worst case emission was recorded, if it complies with the limit, the other emissions deemed to comply with the limit.



Test Mode	Channel	Polarization	Verdict
11A	5280	Horizontal	PASS

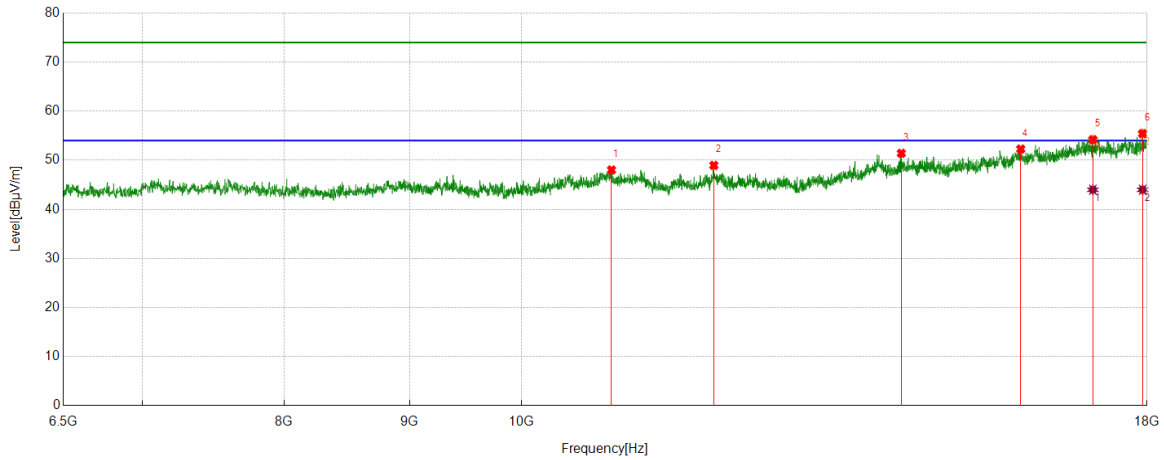


No.	Frequency	Reading Level	Correct Factor	Result	Limit	Margin	Remark
	(MHz)	(dBuV/m)	(dB)	(dBuV/m)	(dBuV/m)	(dB)	
1	7247.6246	36.63	9.44	46.07	74.00	-27.93	peak
2	10960.8268	35.57	12.29	47.86	74.00	-26.14	peak
3	12003.6673	35.89	12.80	48.69	74.00	-25.31	peak
4	13958.9932	36.05	14.91	50.96	74.00	-23.04	peak
5	17731.6219	34.61	19.55	54.16	74.00	-19.84	peak
		25.12	19.55	44.67	54.00	-9.33	average
6	17978.9132	34.90	19.50	54.40	74.00	-19.60	peak
		24.98	19.50	44.48	54.00	-9.52	average

- Remark: 1. Measurement = Reading Level + Correct Factor.
 2. If Peak Result complies with AV limit, AV Result is deemed to comply with AV limit.
 3. Test setup: RBW: 1 MHz, VBW: 3 MHz, Sweep time: auto.
 4. Peak: Peak detector.
 5. AVG: VBW refer to section 6.2.
 6. For above 6.5GHz part, filter losses were only considered in the spurious frequency bands and the authorized band were not corrected for HPF losses. The proper operation of the transmitter prior to adding the filter to the measurement chain.
 7. Only the worst case emission was recorded, if it complies with the limit, the other emissions deemed to comply with the limit.



Test Mode	Channel	Polarization	Verdict
11A	5280	Vertical	PASS

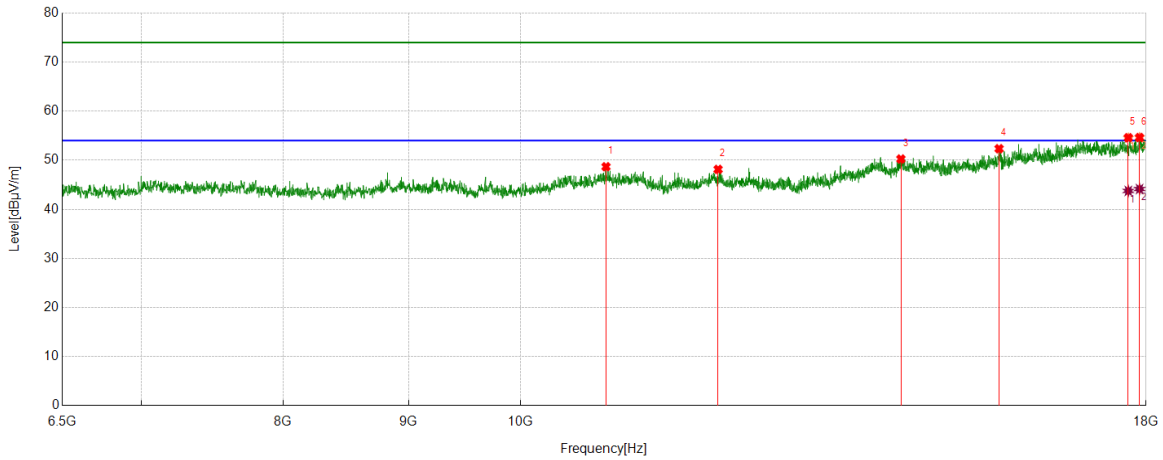


No.	Frequency	Reading Level	Correct Factor	Result	Limit	Margin	Remark
	(MHz)	(dBuV/m)	(dB)	(dBuV/m)	(dBuV/m)	(dB)	
1	10882.2304	35.73	12.29	48.02	74.00	-25.98	peak
2	11980.6634	36.34	12.61	48.95	74.00	-25.05	peak
3	14288.7148	36.27	15.15	51.42	74.00	-22.58	peak
4	15985.2475	35.41	16.87	52.28	74.00	-21.72	peak
5	17106.6844	35.72	18.46	54.18	74.00	-19.82	peak
		25.53	18.46	43.99	54.00	-10.01	average
6	17925.2375	36.14	19.29	55.43	74.00	-18.57	peak
		24.70	19.29	43.99	54.00	-10.01	average

- Remark: 1. Measurement = Reading Level + Correct Factor.
 2. If Peak Result complies with AV limit, AV Result is deemed to comply with AV limit.
 3. Test setup: RBW: 1 MHz, VBW: 3 MHz, Sweep time: auto.
 4. Peak: Peak detector.
 5. AVG: VBW refer to section 6.2.
 6. For above 6.5GHz part, filter losses were only considered in the spurious frequency bands and the authorized band were not corrected for HPF losses. The proper operation of the transmitter prior to adding the filter to the measurement chain.
 7. Only the worst case emission was recorded, if it complies with the limit, the other emissions deemed to comply with the limit.



Test Mode	Channel	Polarization	Verdict
11A	5320	Horizontal	PASS

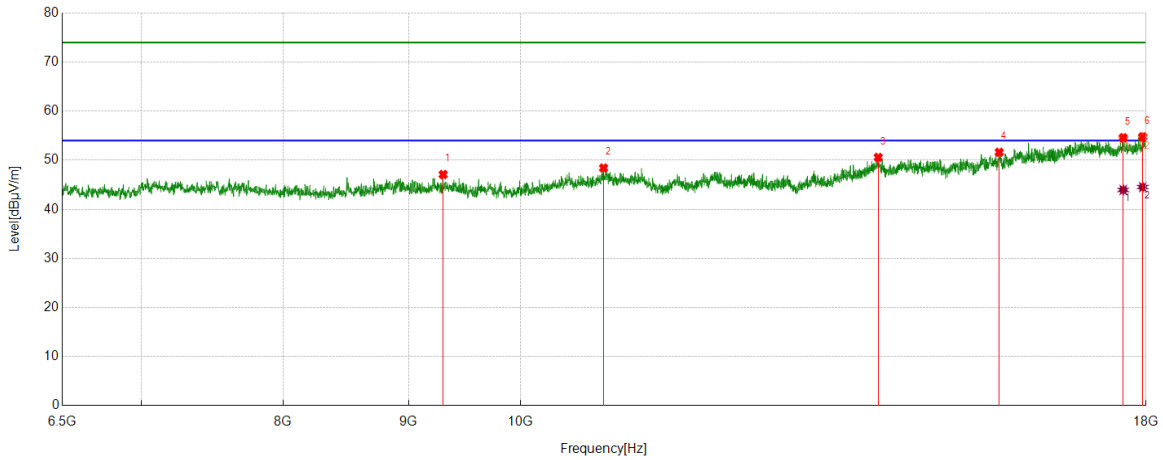


No.	Frequency	Reading Level	Correct Factor	Result	Limit	Margin	Remark
	(MHz)	(dBuV/m)	(dB)	(dBuV/m)	(dBuV/m)	(dB)	
1	10836.2227	36.56	12.12	48.68	74.00	-25.32	peak
2	12040.09	35.74	12.40	48.14	74.00	-25.86	peak
3	14296.3827	35.04	15.21	50.25	74.00	-23.75	peak
4	15678.5298	34.98	17.37	52.35	74.00	-21.65	peak
5	17702.8671	35.92	18.67	54.59	74.00	-19.41	peak
		25.08	18.67	43.75	54.00	-10.25	average
6	17890.7318	35.68	18.95	54.63	74.00	-19.37	peak
		25.19	18.95	44.14	54.00	-9.86	average

- Remark: 1. Measurement = Reading Level + Correct Factor.
 2. If Peak Result complies with AV limit, AV Result is deemed to comply with AV limit.
 3. Test setup: RBW: 1 MHz, VBW: 3 MHz, Sweep time: auto.
 4. Peak: Peak detector.
 5. AVG: VBW refer to section 6.2.
 6. For above 6.5GHz part, filter losses were only considered in the spurious frequency bands and the authorized band were not corrected for HPF losses. The proper operation of the transmitter prior to adding the filter to the measurement chain.
 7. Only the worst case emission was recorded, if it complies with the limit, the other emissions deemed to comply with the limit.



Test Mode	Channel	Polarization	Verdict
11A	5320	Vertical	PASS

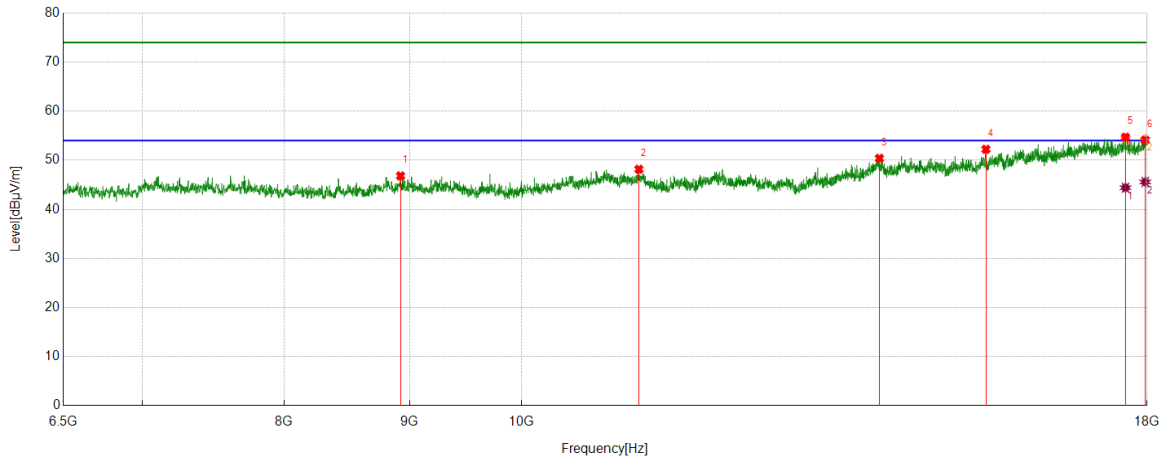


No.	Frequency	Reading Level	Correct Factor	Result	Limit	Margin	Remark
	(MHz)	(dBuV/m)	(dB)	(dBuV/m)	(dBuV/m)	(dB)	
1	9298.7998	37.64	9.46	47.10	74.00	-26.90	peak
2	10811.3019	36.39	12.03	48.42	74.00	-25.58	peak
3	13995.4159	35.17	15.41	50.58	74.00	-23.42	peak
4	15680.4467	34.24	17.39	51.63	74.00	-22.37	peak
5	17618.5198	35.98	18.60	54.58	74.00	-19.42	peak
		25.35	18.60	43.95	54.00	-10.05	average
6	17944.4074	35.68	19.09	54.77	74.00	-19.23	peak
		25.44	19.09	44.53	54.00	-9.47	average

- Remark: 1. Measurement = Reading Level + Correct Factor.
 2. If Peak Result complies with AV limit, AV Result is deemed to comply with AV limit.
 3. Test setup: RBW: 1 MHz, VBW: 3 MHz, Sweep time: auto.
 4. Peak: Peak detector.
 5. AVG: VBW refer to section 6.2.
 6. For above 6.5GHz part, filter losses were only considered in the spurious frequency bands and the authorized band were not corrected for HPF losses. The proper operation of the transmitter prior to adding the filter to the measurement chain.
 7. Only the worst case emission was recorded, if it complies with the limit, the other emissions deemed to comply with the limit.



Test Mode	Channel	Polarization	Verdict
11A	5500	Horizontal	PASS

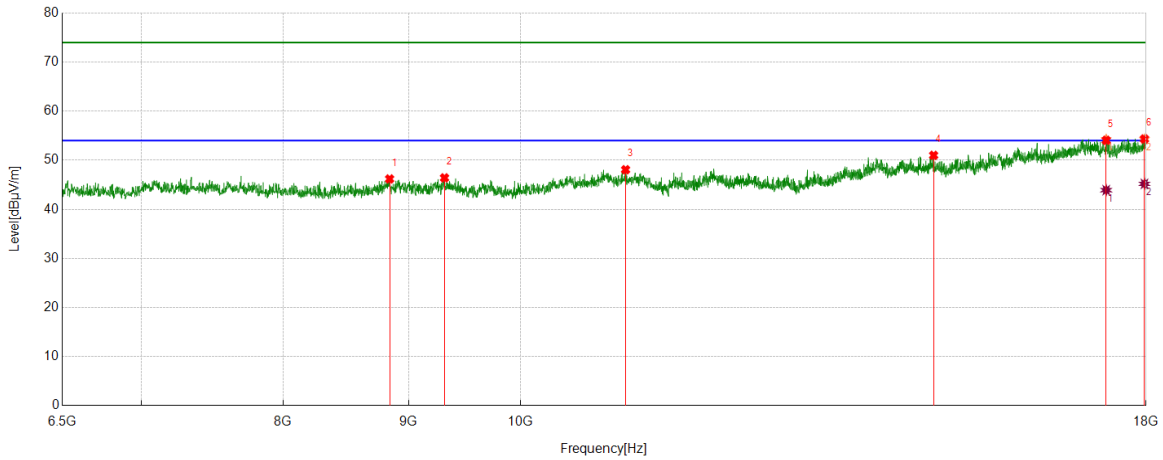


No.	Frequency	Reading Level	Correct Factor	Result	Limit	Margin	Remark
	(MHz)	(dBuV/m)	(dB)	(dBuV/m)	(dBuV/m)	(dB)	
1	8924.9875	37.21	9.60	46.81	74.00	-27.19	peak
2	11165.9443	36.15	12.01	48.16	74.00	-25.84	peak
3	13997.3329	34.97	15.42	50.39	74.00	-23.61	peak
4	15471.4952	36.92	15.31	52.23	74.00	-21.77	peak
5	17639.6066	35.46	19.22	54.68	74.00	-19.32	peak
		25.18	19.22	44.40	54.00	-9.60	average
6	17969.3282	34.43	19.68	54.11	74.00	-19.89	peak
		25.90	19.68	45.58	54.00	-8.42	average

- Remark: 1. Measurement = Reading Level + Correct Factor.
 2. If Peak Result complies with AV limit, AV Result is deemed to comply with AV limit.
 3. Test setup: RBW: 1 MHz, VBW: 3 MHz, Sweep time: auto.
 4. Peak: Peak detector.
 5. AVG: VBW refer to section 6.2.
 6. For above 6.5GHz part, filter losses were only considered in the spurious frequency bands and the authorized band were not corrected for HPF losses. The proper operation of the transmitter prior to adding the filter to the measurement chain.
 7. Only the worst case emission was recorded, if it complies with the limit, the other emissions deemed to comply with the limit.



Test Mode	Channel	Polarization	Verdict
11A	5500	Vertical	PASS

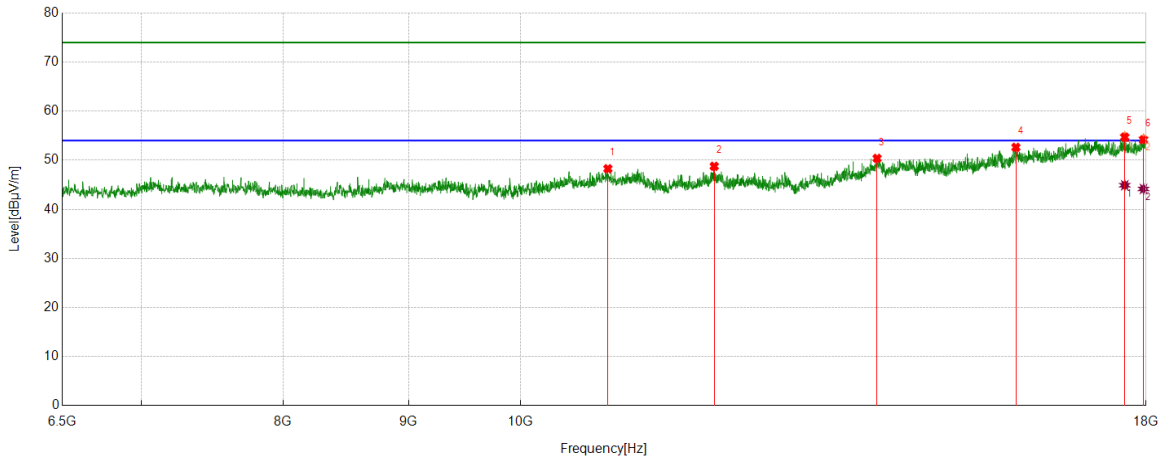


No.	Frequency	Reading Level	Correct Factor	Result	Limit	Margin	Remark
	(MHz)	(dBuV/m)	(dB)	(dBuV/m)	(dBuV/m)	(dB)	
1	8842.5571	36.77	9.42	46.19	74.00	-27.81	peak
2	9310.3017	37.03	9.38	46.41	74.00	-27.59	peak
3	11037.5063	35.83	12.24	48.07	74.00	-25.93	peak
4	14743.0405	36.20	14.80	51.00	74.00	-23.00	peak
5	17338.6398	35.80	18.25	54.05	74.00	-19.95	peak
		25.66	18.25	43.91	54.00	-10.09	average
6	17973.1622	34.69	19.64	54.33	74.00	-19.67	peak
		25.55	19.64	45.19	54.00	-8.81	average

- Remark: 1. Measurement = Reading Level + Correct Factor.
 2. If Peak Result complies with AV limit, AV Result is deemed to comply with AV limit.
 3. Test setup: RBW: 1 MHz, VBW: 3 MHz, Sweep time: auto.
 4. Peak: Peak detector.
 5. AVG: VBW refer to section 6.2.
 6. For above 6.5GHz part, filter losses were only considered in the spurious frequency bands and the authorized band were not corrected for HPF losses. The proper operation of the transmitter prior to adding the filter to the measurement chain.
 7. Only the worst case emission was recorded, if it complies with the limit, the other emissions deemed to comply with the limit.



Test Mode	Channel	Polarization	Verdict
11A	5580	Horizontal	PASS

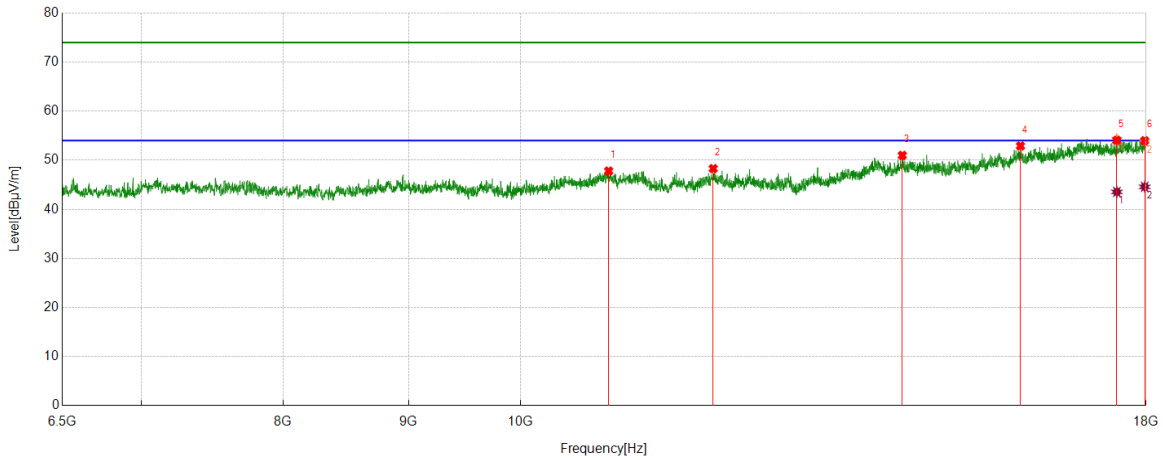


No.	Frequency	Reading Level	Correct Factor	Result	Limit	Margin	Remark
	(MHz)	(dBuV/m)	(dB)	(dBuV/m)	(dBuV/m)	(dB)	
1	10855.3926	36.12	12.15	48.27	74.00	-25.73	peak
2	11995.9993	35.88	12.89	48.77	74.00	-25.23	peak
3	13980.08	35.37	15.01	50.38	74.00	-23.62	peak
4	15927.738	35.33	17.30	52.63	74.00	-21.37	peak
5	17643.4406	35.65	19.06	54.71	74.00	-19.29	peak
		25.85	19.06	44.91	54.00	-9.09	average
6	17957.8263	35.07	19.10	54.17	74.00	-19.83	peak
		25.06	19.10	44.16	54.00	-9.84	average

- Remark: 1. Measurement = Reading Level + Correct Factor.
 2. If Peak Result complies with AV limit, AV Result is deemed to comply with AV limit.
 3. Test setup: RBW: 1 MHz, VBW: 3 MHz, Sweep time: auto.
 4. Peak: Peak detector.
 5. AVG: VBW refer to section 6.2.
 6. For above 6.5GHz part, filter losses were only considered in the spurious frequency bands and the authorized band were not corrected for HPF losses. The proper operation of the transmitter prior to adding the filter to the measurement chain.
 7. Only the worst case emission was recorded, if it complies with the limit, the other emissions deemed to comply with the limit.



Test Mode	Channel	Polarization	Verdict
11A	5580	Vertical	PASS

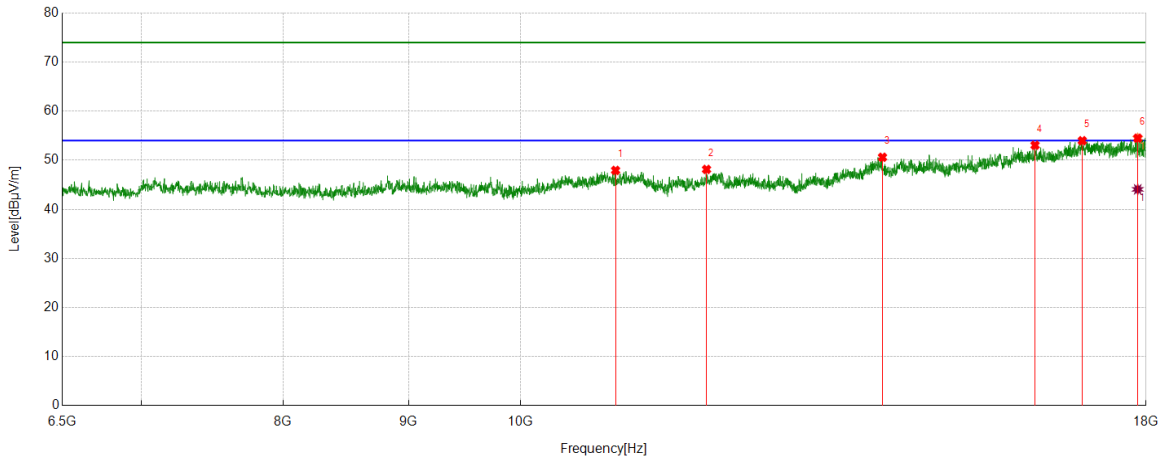


No.	Frequency	Reading Level	Correct Factor	Result	Limit	Margin	Remark
	(MHz)	(dBuV/m)	(dB)	(dBuV/m)	(dBuV/m)	(dB)	
1	10863.0605	35.67	12.13	47.80	74.00	-26.20	peak
2	11984.4974	35.58	12.72	48.30	74.00	-25.70	peak
3	14315.5526	35.89	15.10	50.99	74.00	-23.01	peak
4	15996.7495	35.96	16.95	52.91	74.00	-21.09	peak
5	17513.0855	35.99	18.05	54.04	74.00	-19.96	peak
		25.50	18.05	43.55	54.00	-10.45	average
6	17976.9962	34.47	19.55	54.02	74.00	-19.98	peak
		25.03	19.55	44.58	54.00	-9.42	average

- Remark: 1. Measurement = Reading Level + Correct Factor.
 2. If Peak Result complies with AV limit, AV Result is deemed to comply with AV limit.
 3. Test setup: RBW: 1 MHz, VBW: 3 MHz, Sweep time: auto.
 4. Peak: Peak detector.
 5. AVG: VBW refer to section 6.2.
 6. For above 6.5GHz part, filter losses were only considered in the spurious frequency bands and the authorized band were not corrected for HPF losses. The proper operation of the transmitter prior to adding the filter to the measurement chain.
 7. Only the worst case emission was recorded, if it complies with the limit, the other emissions deemed to comply with the limit.



Test Mode	Channel	Polarization	Verdict
11A	5720	Horizontal	PASS

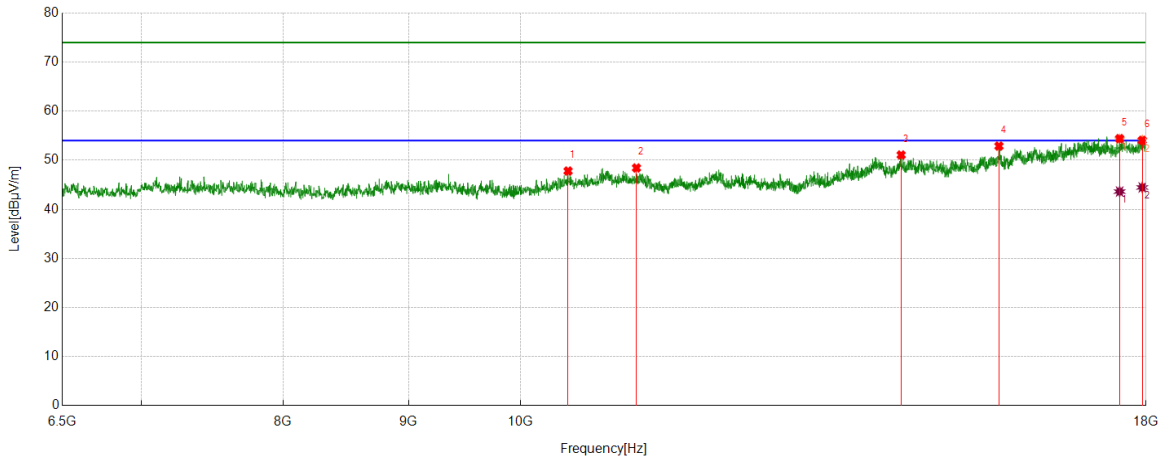


No.	Frequency	Reading Level	Correct Factor	Result	Limit	Margin	Remark
	(MHz)	(dBuV/m)	(dB)	(dBuV/m)	(dBuV/m)	(dB)	
1	10933.989	35.62	12.31	47.93	74.00	-26.07	peak
2	11909.735	35.83	12.30	48.13	74.00	-25.87	peak
3	14051.0085	35.43	15.18	50.61	74.00	-23.39	peak
4	16217.2029	35.22	17.83	53.05	74.00	-20.95	peak
5	16953.3256	34.90	19.08	53.98	74.00	-20.02	peak
6	17860.06	35.60	18.90	54.50	74.00	-19.50	peak
		25.17	18.90	44.07	54.00	-9.93	average

- Remark: 1. Measurement = Reading Level + Correct Factor.
 2. If Peak Result complies with AV limit, AV Result is deemed to comply with AV limit.
 3. Test setup: RBW: 1 MHz, VBW: 3 MHz, Sweep time: auto.
 4. Peak: Peak detector.
 5. AVG: VBW refer to section 6.2.
 6. For above 6.5GHz part, filter losses were only considered in the spurious frequency bands and the authorized band were not corrected for HPF losses. The proper operation of the transmitter prior to adding the filter to the measurement chain.
 7. Only the worst case emission was recorded, if it complies with the limit, the other emissions deemed to comply with the limit.



Test Mode	Channel	Polarization	Verdict
11A	5720	Vertical	PASS

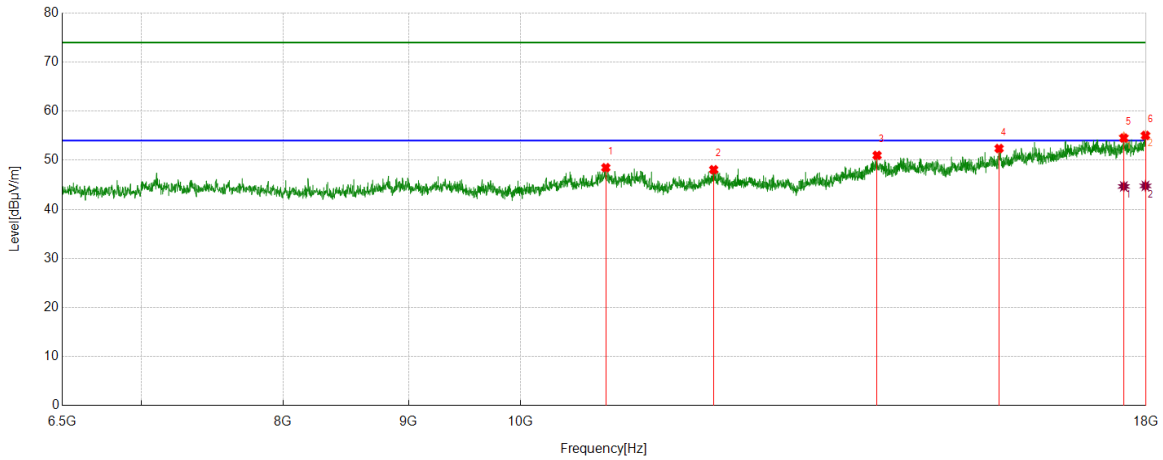


No.	Frequency	Reading Level	Correct Factor	Result	Limit	Margin	Remark
	(MHz)	(dBuV/m)	(dB)	(dBuV/m)	(dBuV/m)	(dB)	
1	10456.6594	36.46	11.34	47.80	74.00	-26.20	peak
2	11150.6084	36.44	11.99	48.43	74.00	-25.57	peak
3	14300.2167	35.83	15.24	51.07	74.00	-22.93	peak
4	15676.6128	35.55	17.33	52.88	74.00	-21.12	peak
5	17559.0932	35.92	18.48	54.40	74.00	-19.60	peak
		25.14	18.48	43.62	54.00	-10.38	average
6	17936.7395	34.88	19.17	54.05	74.00	-19.95	peak
		25.29	19.17	44.46	54.00	-9.54	average

- Remark: 1. Measurement = Reading Level + Correct Factor.
 2. If Peak Result complies with AV limit, AV Result is deemed to comply with AV limit.
 3. Test setup: RBW: 1 MHz, VBW: 3 MHz, Sweep time: auto.
 4. Peak: Peak detector.
 5. AVG: VBW refer to section 6.2.
 6. For above 6.5GHz part, filter losses were only considered in the spurious frequency bands and the authorized band were not corrected for HPF losses. The proper operation of the transmitter prior to adding the filter to the measurement chain.
 7. Only the worst case emission was recorded, if it complies with the limit, the other emissions deemed to comply with the limit.



Test Mode	Channel	Polarization	Verdict
11A	5745	Horizontal	PASS

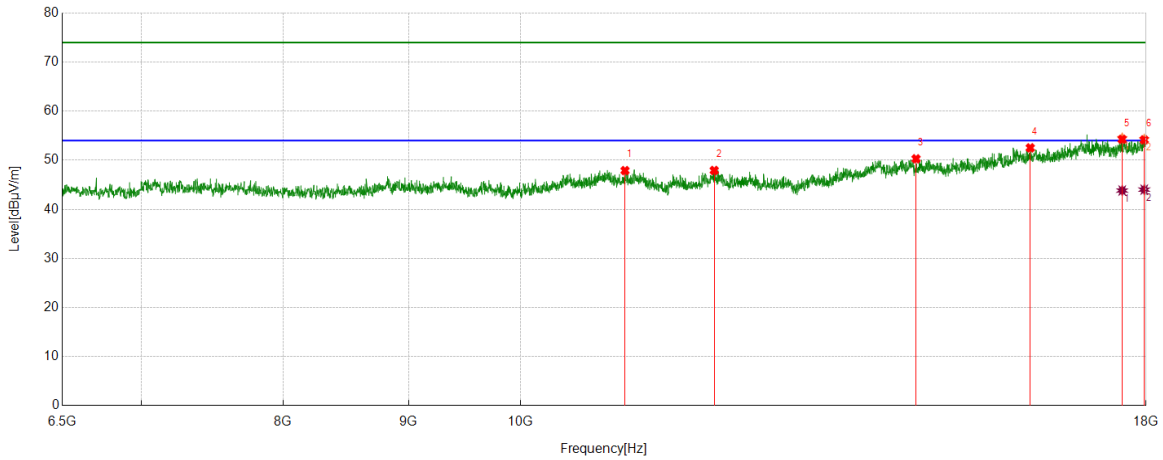


No.	Frequency	Reading Level	Correct Factor	Result	Limit	Margin	Remark
	(MHz)	(dBuV/m)	(dB)	(dBuV/m)	(dBuV/m)	(dB)	
1	10834.3057	36.35	12.14	48.49	74.00	-25.51	peak
2	11990.2484	35.20	12.88	48.08	74.00	-25.92	peak
3	13980.08	35.98	15.01	50.99	74.00	-23.01	peak
4	15678.5298	35.02	17.37	52.39	74.00	-21.61	peak
5	17628.1047	35.56	18.96	54.52	74.00	-19.48	peak
		25.71	18.96	44.67	54.00	-9.33	average
6	17990.4151	35.47	19.58	55.05	74.00	-18.95	peak
		25.19	19.58	44.77	54.00	-9.23	average

- Remark: 1. Measurement = Reading Level + Correct Factor.
 2. If Peak Result complies with AV limit, AV Result is deemed to comply with AV limit.
 3. Test setup: RBW: 1 MHz, VBW: 3 MHz, Sweep time: auto.
 4. Peak: Peak detector.
 5. AVG: VBW refer to section 6.2.
 6. For above 6.5GHz part, filter losses were only considered in the spurious frequency bands and the authorized band were not corrected for HPF losses. The proper operation of the transmitter prior to adding the filter to the measurement chain.
 7. Only the worst case emission was recorded, if it complies with the limit, the other emissions deemed to comply with the limit.



Test Mode	Channel	Polarization	Verdict
11A	5745	Vertical	PASS

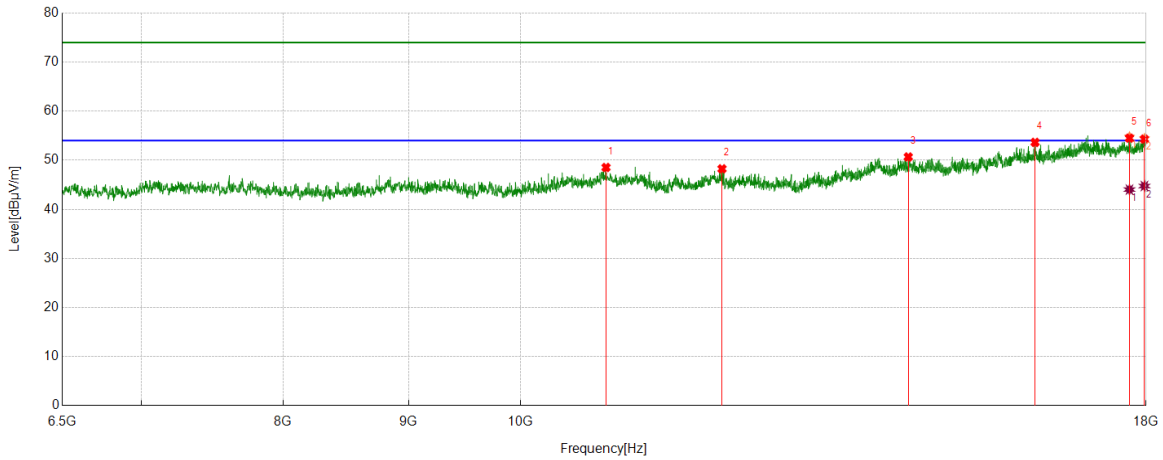


No.	Frequency	Reading Level	Correct Factor	Result	Limit	Margin	Remark
	(MHz)	(dBµV/m)	(dB)	(dBµV/m)	(dBµV/m)	(dB)	
1	11031.7553	35.61	12.28	47.89	74.00	-26.11	peak
2	11995.9993	35.03	12.89	47.92	74.00	-26.08	peak
3	14501.5002	35.08	15.21	50.29	74.00	-23.71	peak
4	16144.3574	35.64	16.89	52.53	74.00	-21.47	peak
5	17601.2669	35.48	18.78	54.26	74.00	-19.74	peak
		25.05	18.78	43.83	54.00	-10.17	average
6	17969.3282	34.47	19.68	54.15	74.00	-19.85	peak
		24.33	19.68	44.01	54.00	-9.99	average

- Remark: 1. Measurement = Reading Level + Correct Factor.
 2. If Peak Result complies with AV limit, AV Result is deemed to comply with AV limit.
 3. Test setup: RBW: 1 MHz, VBW: 3 MHz, Sweep time: auto.
 4. Peak: Peak detector.
 5. AVG: VBW refer to section 6.2.
 6. For above 6.5GHz part, filter losses were only considered in the spurious frequency bands and the authorized band were not corrected for HPF losses. The proper operation of the transmitter prior to adding the filter to the measurement chain.
 7. Only the worst case emission was recorded, if it complies with the limit, the other emissions deemed to comply with the limit.



Test Mode	Channel	Polarization	Verdict
11A	5785	Horizontal	PASS

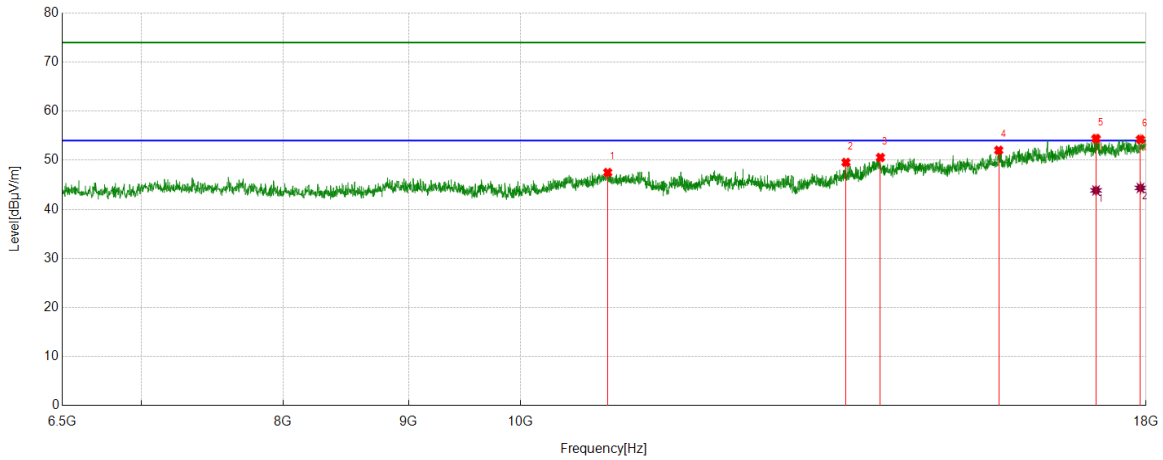


No.	Frequency	Reading Level	Correct Factor	Result	Limit	Margin	Remark
	(MHz)	(dBuV/m)	(dB)	(dBuV/m)	(dBuV/m)	(dB)	
1	10836.2227	36.41	12.12	48.53	74.00	-25.47	peak
2	12084.1807	35.40	12.85	48.25	74.00	-25.75	peak
3	14396.066	35.93	14.74	50.67	74.00	-23.33	peak
4	16217.2029	35.81	17.83	53.64	74.00	-20.36	peak
5	17722.037	35.28	19.22	54.50	74.00	-19.50	peak
		24.80	19.22	44.02	54.00	-9.98	average
6	17973.1622	34.66	19.64	54.30	74.00	-19.70	peak
		25.11	19.64	44.75	54.00	-9.25	average

- Remark: 1. Measurement = Reading Level + Correct Factor.
 2. If Peak Result complies with AV limit, AV Result is deemed to comply with AV limit.
 3. Test setup: RBW: 1 MHz, VBW: 3 MHz, Sweep time: auto.
 4. Peak: Peak detector.
 5. AVG: VBW refer to section 6.2.
 6. For above 6.5GHz part, filter losses were only considered in the spurious frequency bands and the authorized band were not corrected for HPF losses. The proper operation of the transmitter prior to adding the filter to the measurement chain.
 7. Only the worst case emission was recorded, if it complies with the limit, the other emissions deemed to comply with the limit.



Test Mode	Channel	Polarization	Verdict
11A	5785	Vertical	PASS

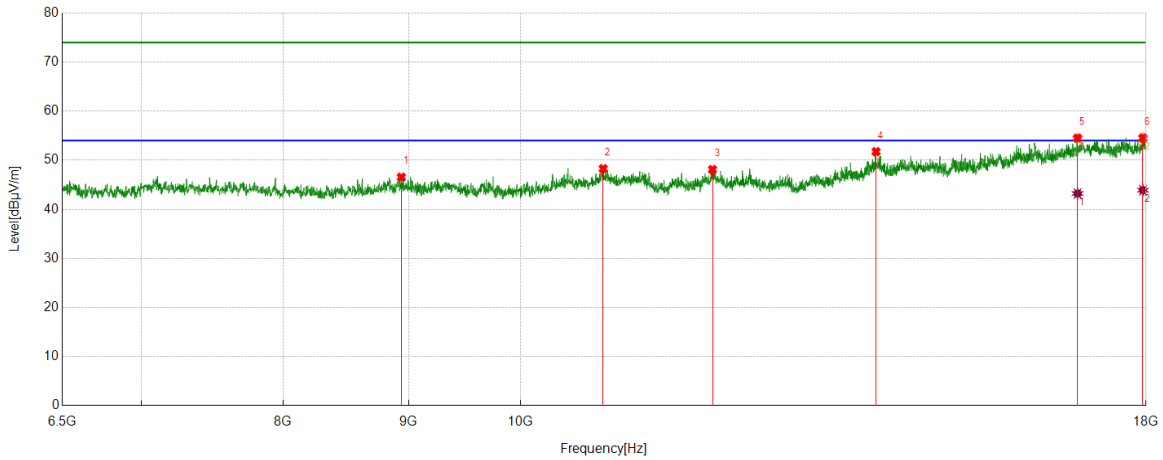


No.	Frequency	Reading Level	Correct Factor	Result	Limit	Margin	Remark
	(MHz)	(dBuV/m)	(dB)	(dBuV/m)	(dBuV/m)	(dB)	
1	10853.4756	35.34	12.16	47.50	74.00	-26.50	peak
2	13577.5129	36.53	13.03	49.56	74.00	-24.44	peak
3	14024.1707	35.14	15.42	50.56	74.00	-23.44	peak
4	15672.7788	34.78	17.25	52.03	74.00	-21.97	peak
5	17173.779	35.85	18.57	54.42	74.00	-19.58	peak
		25.28	18.57	43.85	54.00	-10.15	average
6	17906.0677	35.15	19.09	54.24	74.00	-19.76	peak
		25.27	19.09	44.36	54.00	-9.64	average

- Remark: 1. Measurement = Reading Level + Correct Factor.
 2. If Peak Result complies with AV limit, AV Result is deemed to comply with AV limit.
 3. Test setup: RBW: 1 MHz, VBW: 3 MHz, Sweep time: auto.
 4. Peak: Peak detector.
 5. AVG: VBW refer to section 6.2.
 6. For above 6.5GHz part, filter losses were only considered in the spurious frequency bands and the authorized band were not corrected for HPF losses. The proper operation of the transmitter prior to adding the filter to the measurement chain.
 7. Only the worst case emission was recorded, if it complies with the limit, the other emissions deemed to comply with the limit.



Test Mode	Channel	Polarization	Verdict
11A	5825	Horizontal	PASS

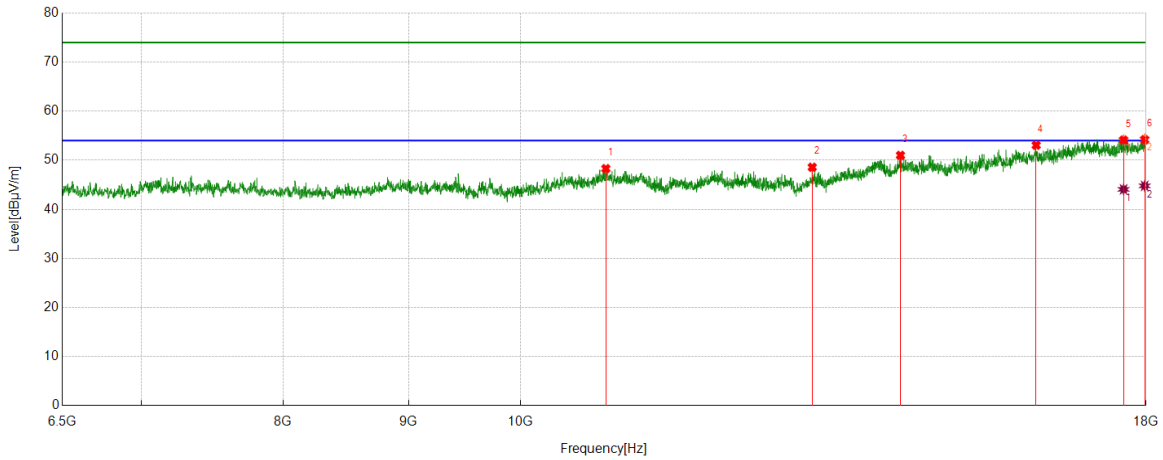


No.	Frequency	Reading Level	Correct Factor	Result	Limit	Margin	Remark
	(MHz)	(dBuV/m)	(dB)	(dBuV/m)	(dBuV/m)	(dB)	
1	8940.3234	37.07	9.48	46.55	74.00	-27.45	peak
2	10807.4679	36.28	12.01	48.29	74.00	-25.71	peak
3	11976.8295	35.51	12.60	48.11	74.00	-25.89	peak
4	13966.6611	36.86	14.89	51.75	74.00	-22.25	peak
5	16878.5631	36.39	18.12	54.51	74.00	-19.49	peak
		25.10	18.12	43.22	54.00	-10.78	average
6	17948.2414	35.52	19.04	54.56	74.00	-19.44	peak
		24.86	19.04	43.90	54.00	-10.10	average

- Remark: 1. Measurement = Reading Level + Correct Factor.
 2. If Peak Result complies with AV limit, AV Result is deemed to comply with AV limit.
 3. Test setup: RBW: 1 MHz, VBW: 3 MHz, Sweep time: auto.
 4. Peak: Peak detector.
 5. AVG: VBW refer to section 6.2.
 6. For above 6.5GHz part, filter losses were only considered in the spurious frequency bands and the authorized band were not corrected for HPF losses. The proper operation of the transmitter prior to adding the filter to the measurement chain.
 7. Only the worst case emission was recorded, if it complies with the limit, the other emissions deemed to comply with the limit.



Test Mode	Channel	Polarization	Verdict
11A	5825	Vertical	PASS

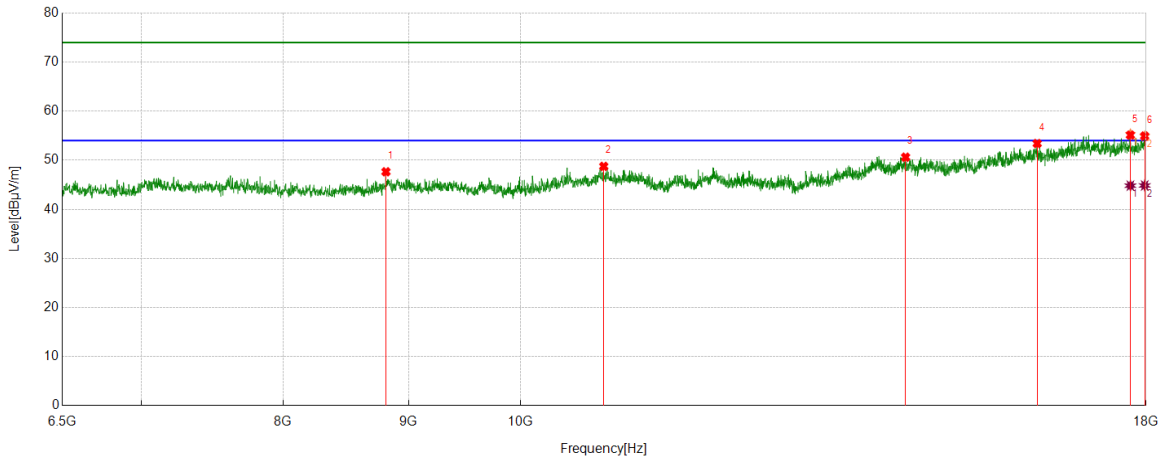


No.	Frequency	Reading Level	Correct Factor	Result	Limit	Margin	Remark
	(MHz)	(dBuV/m)	(dB)	(dBuV/m)	(dBuV/m)	(dB)	
1	10834.3057	36.15	12.14	48.29	74.00	-25.71	peak
2	13153.859	36.94	11.63	48.57	74.00	-25.43	peak
3	14290.6318	35.83	15.17	51.00	74.00	-23.00	peak
4	16234.4557	34.82	18.23	53.05	74.00	-20.95	peak
5	17624.2707	35.31	18.79	54.10	74.00	-19.90	peak
		25.28	18.79	44.07	54.00	-9.93	average
6	17976.9962	34.63	19.55	54.18	74.00	-19.82	peak
		25.23	19.55	44.78	54.00	-9.22	average

- Remark: 1. Measurement = Reading Level + Correct Factor.
 2. If Peak Result complies with AV limit, AV Result is deemed to comply with AV limit.
 3. Test setup: RBW: 1 MHz, VBW: 3 MHz, Sweep time: auto.
 4. Peak: Peak detector.
 5. AVG: VBW refer to section 6.2.
 6. For above 6.5GHz part, filter losses were only considered in the spurious frequency bands and the authorized band were not corrected for HPF losses. The proper operation of the transmitter prior to adding the filter to the measurement chain.
 7. Only the worst case emission was recorded, if it complies with the limit, the other emissions deemed to comply with the limit.



Test Mode	Channel	Polarization	Verdict
11AC20	5180	Horizontal	PASS

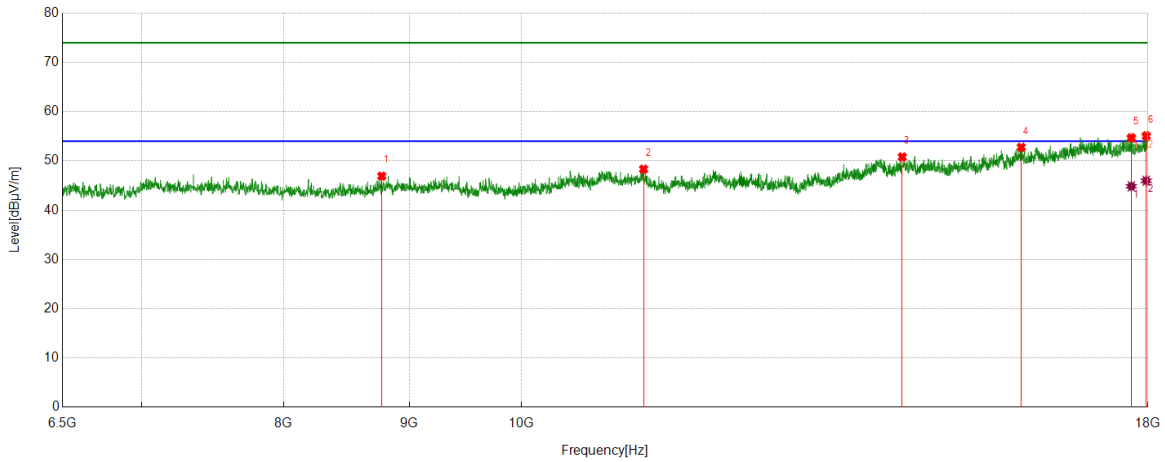


No.	Frequency	Reading Level	Correct Factor	Result	Limit	Margin	Remark
	(MHz)	(dBuV/m)	(dB)	(dBuV/m)	(dBuV/m)	(dB)	
1	8811.8853	38.27	9.38	47.65	74.00	-26.35	peak
2	10813.2189	36.67	12.08	48.75	74.00	-25.25	peak
3	14359.6433	35.71	14.91	50.62	74.00	-23.38	peak
4	16249.7916	35.80	17.61	53.41	74.00	-20.59	peak
5	17737.3729	35.82	19.30	55.12	74.00	-18.88	peak
		25.52	19.30	44.82	54.00	-9.18	average
6	17976.9962	35.38	19.55	54.93	74.00	-19.07	peak
		25.31	19.55	44.86	54.00	-9.14	average

- Remark: 1. Measurement = Reading Level + Correct Factor.
 2. If Peak Result complies with AV limit, AV Result is deemed to comply with AV limit.
 3. Test setup: RBW: 1 MHz, VBW: 3 MHz, Sweep time: auto.
 4. Peak: Peak detector.
 5. AVG: VBW refer to section 6.2.
 6. For above 6.5GHz part, filter losses were only considered in the spurious frequency bands and the authorized band were not corrected for HPF losses. The proper operation of the transmitter prior to adding the filter to the measurement chain.
 7. Only the worst case emission was recorded, if it complies with the limit, the other emissions deemed to comply with the limit.



Test Mode	Channel	Polarization	Verdict
11AC20	5180	Vertical	PASS

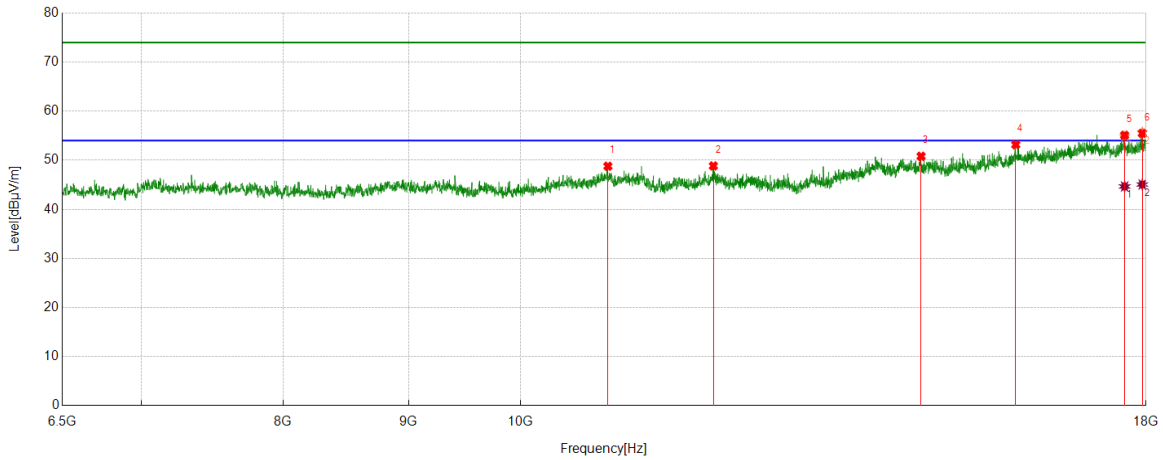


No.	Frequency	Reading Level	Correct Factor	Result	Limit	Margin	Remark
	(MHz)	(dBuV/m)	(dB)	(dBuV/m)	(dBuV/m)	(dB)	
1	8771.6286	37.59	9.32	46.91	74.00	-27.09	peak
2	11213.869	36.38	11.95	48.33	74.00	-25.67	peak
3	14294.4657	35.61	15.20	50.81	74.00	-23.19	peak
4	15983.3306	35.93	16.83	52.76	74.00	-21.24	peak
5	17722.037	35.47	19.22	54.69	74.00	-19.31	peak
		25.63	19.22	44.85	54.00	-9.15	average
6	17971.2452	35.38	19.69	55.07	74.00	-18.93	peak
		26.28	19.69	45.97	54.00	-8.03	average

- Remark: 1. Measurement = Reading Level + Correct Factor.
 2. If Peak Result complies with AV limit, AV Result is deemed to comply with AV limit.
 3. Test setup: RBW: 1 MHz, VBW: 3 MHz, Sweep time: auto.
 4. Peak: Peak detector.
 5. AVG: VBW refer to section 6.2.
 6. For above 6.5GHz part, filter losses were only considered in the spurious frequency bands and the authorized band were not corrected for HPF losses. The proper operation of the transmitter prior to adding the filter to the measurement chain.
 7. Only the worst case emission was recorded, if it complies with the limit, the other emissions deemed to comply with the limit.



Test Mode	Channel	Polarization	Verdict
11AC20	5200	Horizontal	PASS

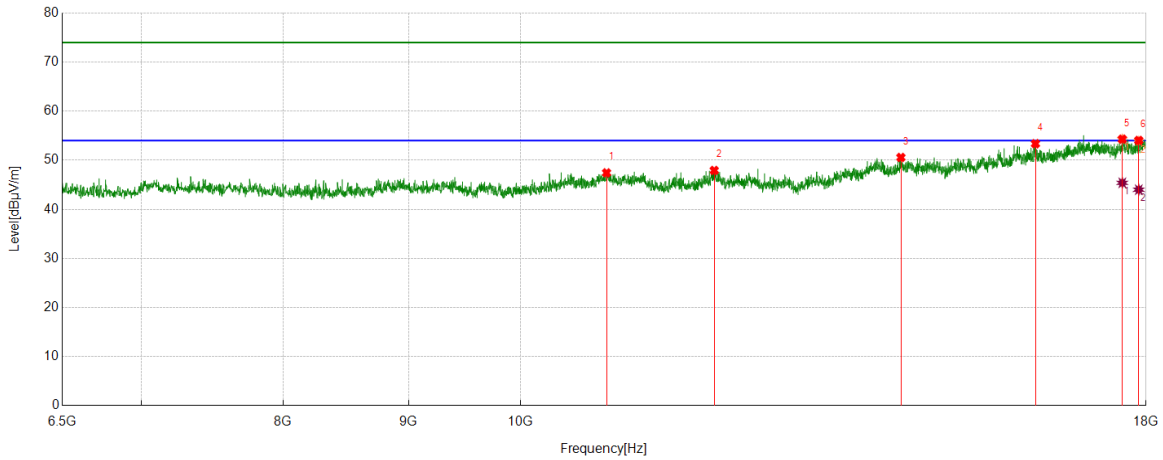


No.	Frequency	Reading Level	Correct Factor	Result	Limit	Margin	Remark
	(MHz)	(dBuV/m)	(dB)	(dBuV/m)	(dBuV/m)	(dB)	
1	10855.3926	36.63	12.15	48.78	74.00	-25.22	peak
2	11986.4144	36.06	12.78	48.84	74.00	-25.16	peak
3	14570.5118	35.41	15.40	50.81	74.00	-23.19	peak
4	15925.821	35.74	17.43	53.17	74.00	-20.83	peak
5	17641.5236	35.94	19.15	55.09	74.00	-18.91	peak
		25.50	19.15	44.65	54.00	-9.35	average
6	17936.7395	36.30	19.17	55.47	74.00	-18.53	peak
		25.89	19.17	45.06	54.00	-8.94	average

- Remark: 1. Measurement = Reading Level + Correct Factor.
 2. If Peak Result complies with AV limit, AV Result is deemed to comply with AV limit.
 3. Test setup: RBW: 1 MHz, VBW: 3 MHz, Sweep time: auto.
 4. Peak: Peak detector.
 5. AVG: VBW refer to section 6.2.
 6. For above 6.5GHz part, filter losses were only considered in the spurious frequency bands and the authorized band were not corrected for HPF losses. The proper operation of the transmitter prior to adding the filter to the measurement chain.
 7. Only the worst case emission was recorded, if it complies with the limit, the other emissions deemed to comply with the limit.



Test Mode	Channel	Polarization	Verdict
11AC20	5200	Vertical	PASS

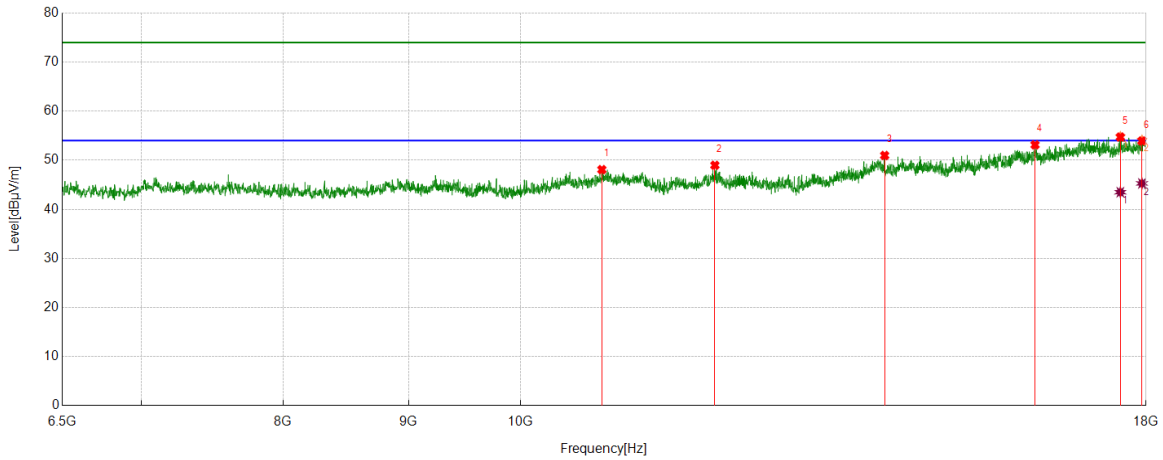


No.	Frequency	Reading Level	Correct Factor	Result	Limit	Margin	Remark
	(MHz)	(dBuV/m)	(dB)	(dBuV/m)	(dBuV/m)	(dB)	
1	10841.9737	35.33	12.10	47.43	74.00	-26.57	peak
2	11995.9993	35.03	12.89	47.92	74.00	-26.08	peak
3	14296.3827	35.36	15.21	50.57	74.00	-23.43	peak
4	16222.9538	35.32	18.05	53.37	74.00	-20.63	peak
5	17603.1839	35.56	18.73	54.29	74.00	-19.71	peak
		26.67	18.73	45.40	54.00	-8.60	average
6	17877.3129	34.97	19.06	54.03	74.00	-19.97	peak
		24.94	19.06	44.00	54.00	-10.00	average

- Remark: 1. Measurement = Reading Level + Correct Factor.
 2. If Peak Result complies with AV limit, AV Result is deemed to comply with AV limit.
 3. Test setup: RBW: 1 MHz, VBW: 3 MHz, Sweep time: auto.
 4. Peak: Peak detector.
 5. AVG: VBW refer to section 6.2.
 6. For above 6.5GHz part, filter losses were only considered in the spurious frequency bands and the authorized band were not corrected for HPF losses. The proper operation of the transmitter prior to adding the filter to the measurement chain.
 7. Only the worst case emission was recorded, if it complies with the limit, the other emissions deemed to comply with the limit.



Test Mode	Channel	Polarization	Verdict
11AC20	5240	Horizontal	PASS

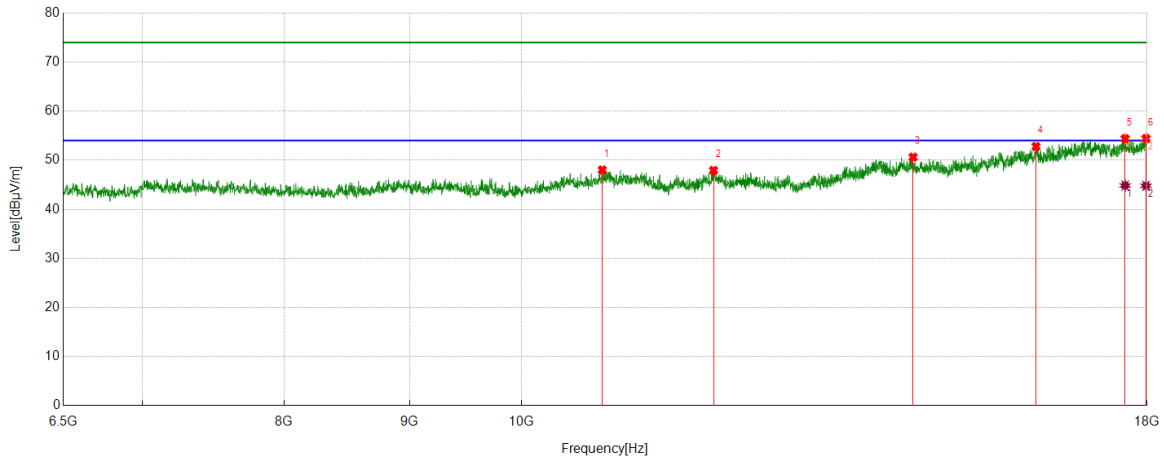


No.	Frequency	Reading Level	Correct Factor	Result	Limit	Margin	Remark
	(MHz)	(dBuV/m)	(dB)	(dBuV/m)	(dBuV/m)	(dB)	
1	10794.049	36.06	12.03	48.09	74.00	-25.91	peak
2	12003.6673	36.17	12.80	48.97	74.00	-25.03	peak
3	14079.7633	35.60	15.37	50.97	74.00	-23.03	peak
4	16217.2029	35.30	17.83	53.13	74.00	-20.87	peak
5	17570.5951	35.90	18.83	54.73	74.00	-19.27	peak
		24.66	18.83	43.49	54.00	-10.51	average
6	17930.9885	34.81	19.19	54.00	74.00	-20.00	peak
		26.09	19.19	45.28	54.00	-8.72	average

- Remark: 1. Measurement = Reading Level + Correct Factor.
 2. If Peak Result complies with AV limit, AV Result is deemed to comply with AV limit.
 3. Test setup: RBW: 1 MHz, VBW: 3 MHz, Sweep time: auto.
 4. Peak: Peak detector.
 5. AVG: VBW refer to section 6.2.
 6. For above 6.5GHz part, filter losses were only considered in the spurious frequency bands and the authorized band were not corrected for HPF losses. The proper operation of the transmitter prior to adding the filter to the measurement chain.
 7. Only the worst case emission was recorded, if it complies with the limit, the other emissions deemed to comply with the limit.



Test Mode	Channel	Polarization	Verdict
11AC20	5240	Vertical	PASS

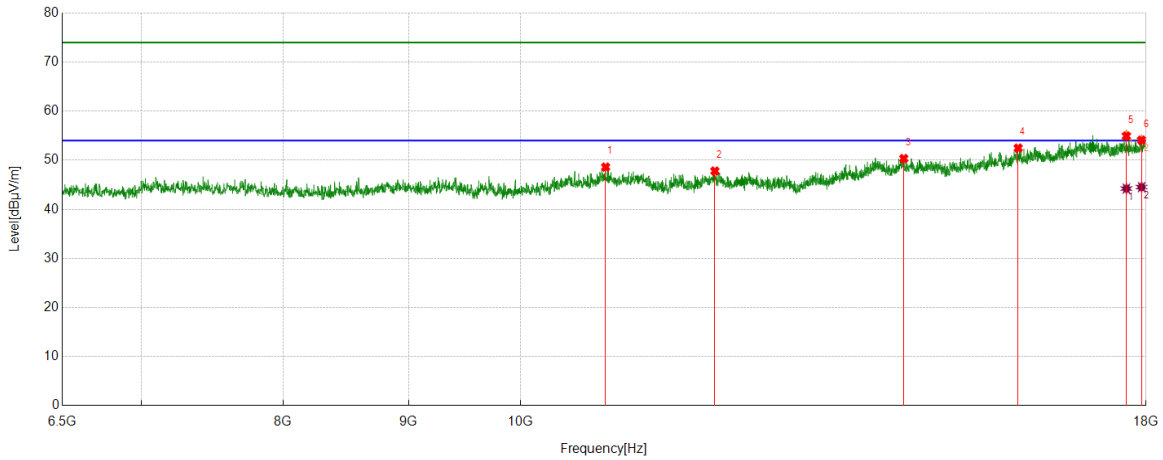


No.	Frequency	Reading Level	Correct Factor	Result	Limit	Margin	Remark
	(MHz)	(dBuV/m)	(dB)	(dBuV/m)	(dBuV/m)	(dB)	
1	10788.298	36.02	12.01	48.03	74.00	-25.97	peak
2	11976.8295	35.33	12.60	47.93	74.00	-26.07	peak
3	14447.8246	35.64	14.99	50.63	74.00	-23.37	peak
4	16217.2029	34.97	17.83	52.80	74.00	-21.20	peak
5	17633.8556	35.27	19.12	54.39	74.00	-19.61	peak
		25.74	19.12	44.86	54.00	-9.14	average
6	17982.7471	34.93	19.50	54.43	74.00	-19.57	peak
		25.30	19.50	44.80	54.00	-9.20	average

- Remark: 1. Measurement = Reading Level + Correct Factor.
 2. If Peak Result complies with AV limit, AV Result is deemed to comply with AV limit.
 3. Test setup: RBW: 1 MHz, VBW: 3 MHz, Sweep time: auto.
 4. Peak: Peak detector.
 5. AVG: VBW refer to section 6.2.
 6. For above 6.5GHz part, filter losses were only considered in the spurious frequency bands and the authorized band were not corrected for HPF losses. The proper operation of the transmitter prior to adding the filter to the measurement chain.
 7. Only the worst case emission was recorded, if it complies with the limit, the other emissions deemed to comply with the limit.



Test Mode	Channel	Polarization	Verdict
11AC20	5260	Horizontal	PASS

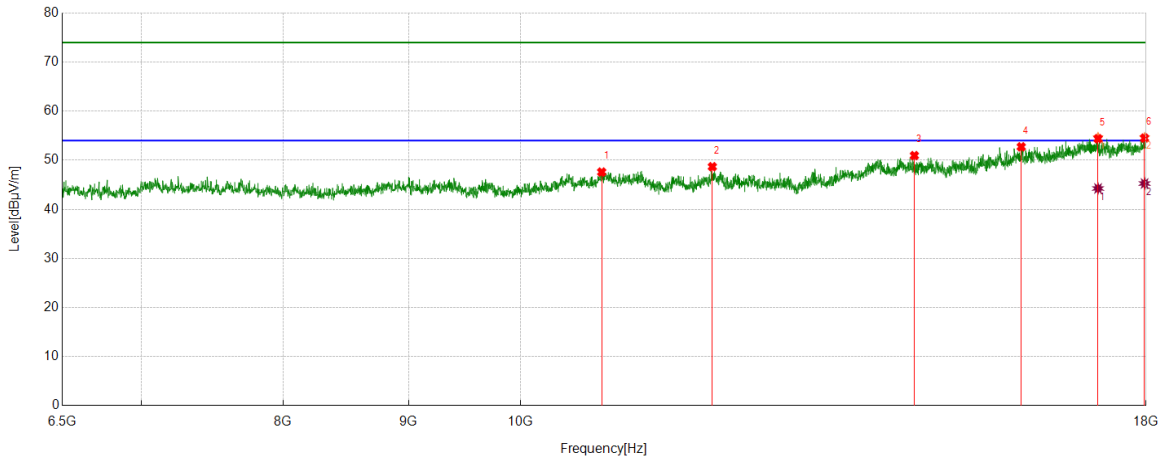


No.	Frequency	Reading Level	Correct Factor	Result	Limit	Margin	Remark
	(MHz)	(dBuV/m)	(dB)	(dBuV/m)	(dBuV/m)	(dB)	
1	10832.3887	36.45	12.16	48.61	74.00	-25.39	peak
2	12003.6673	35.00	12.80	47.80	74.00	-26.20	peak
3	14334.7225	34.94	15.41	50.35	74.00	-23.65	peak
4	15962.2437	35.69	16.78	52.47	74.00	-21.53	peak
5	17670.2784	35.53	19.39	54.92	74.00	-19.08	peak
		24.83	19.39	44.22	54.00	-9.78	average
6	17925.2375	34.80	19.29	54.09	74.00	-19.91	peak
		25.24	19.29	44.53	54.00	-9.47	average

- Remark: 1. Measurement = Reading Level + Correct Factor.
 2. If Peak Result complies with AV limit, AV Result is deemed to comply with AV limit.
 3. Test setup: RBW: 1 MHz, VBW: 3 MHz, Sweep time: auto.
 4. Peak: Peak detector.
 5. AVG: VBW refer to section 6.2.
 6. For above 6.5GHz part, filter losses were only considered in the spurious frequency bands and the authorized band were not corrected for HPF losses. The proper operation of the transmitter prior to adding the filter to the measurement chain.
 7. Only the worst case emission was recorded, if it complies with the limit, the other emissions deemed to comply with the limit.



Test Mode	Channel	Polarization	Verdict
11AC20	5260	Vertical	PASS

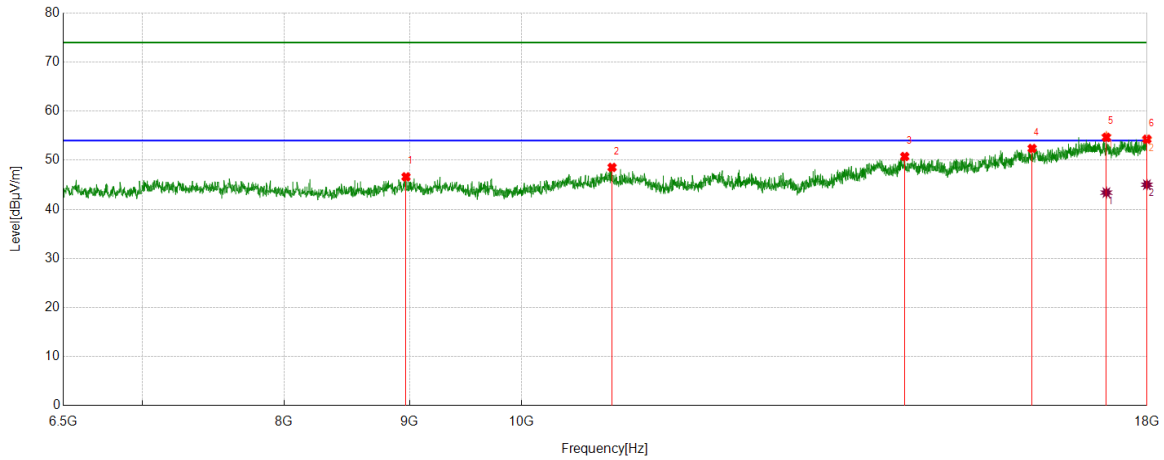


No.	Frequency	Reading Level	Correct Factor	Result	Limit	Margin	Remark
	(MHz)	(dBuV/m)	(dB)	(dBuV/m)	(dBuV/m)	(dB)	
1	10792.132	35.57	12.02	47.59	74.00	-26.41	peak
2	11974.9125	36.07	12.61	48.68	74.00	-25.32	peak
3	14478.4964	35.86	15.09	50.95	74.00	-23.05	peak
4	16008.2514	35.64	17.09	52.73	74.00	-21.27	peak
5	17206.3677	35.73	18.65	54.38	74.00	-19.62	peak
		25.60	18.65	44.25	54.00	-9.75	average
6	17975.0792	34.92	19.59	54.51	74.00	-19.49	peak
		25.67	19.59	45.26	54.00	-8.74	average

- Remark: 1. Measurement = Reading Level + Correct Factor.
 2. If Peak Result complies with AV limit, AV Result is deemed to comply with AV limit.
 3. Test setup: RBW: 1 MHz, VBW: 3 MHz, Sweep time: auto.
 4. Peak: Peak detector.
 5. AVG: VBW refer to section 6.2.
 6. For above 6.5GHz part, filter losses were only considered in the spurious frequency bands and the authorized band were not corrected for HPF losses. The proper operation of the transmitter prior to adding the filter to the measurement chain.
 7. Only the worst case emission was recorded, if it complies with the limit, the other emissions deemed to comply with the limit.



Test Mode	Channel	Polarization	Verdict
11AC20	5280	Horizontal	PASS

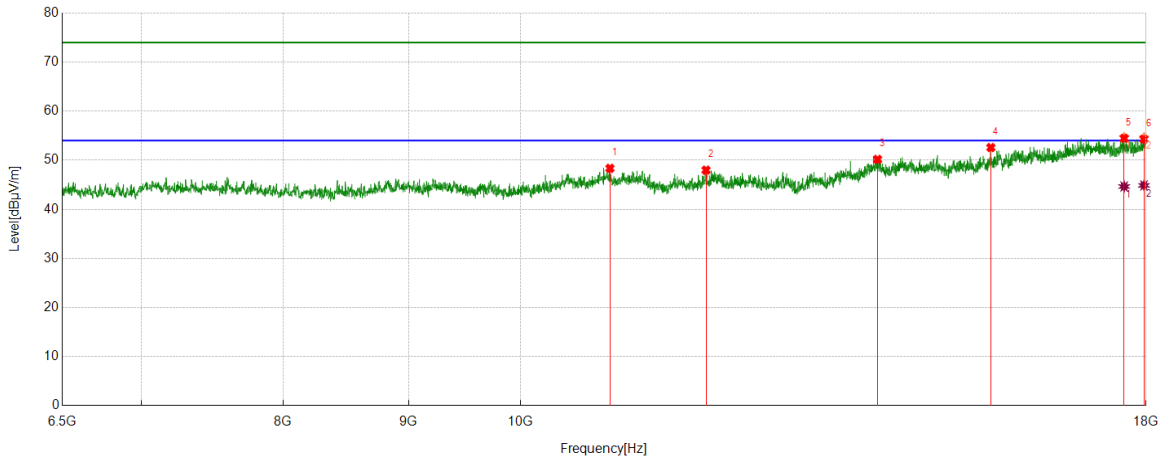


No.	Frequency	Reading Level	Correct Factor	Result	Limit	Margin	Remark
	(MHz)	(dBuV/m)	(dB)	(dBuV/m)	(dBuV/m)	(dB)	
1	8970.9952	37.07	9.55	46.62	74.00	-27.38	peak
2	10887.9813	36.29	12.25	48.54	74.00	-25.46	peak
3	14334.7225	35.35	15.41	50.76	74.00	-23.24	peak
4	16157.7763	35.30	17.10	52.40	74.00	-21.60	peak
5	17325.2209	36.54	18.12	54.66	74.00	-19.34	peak
		25.29	18.12	43.41	54.00	-10.59	average
6	17998.083	34.68	19.60	54.28	74.00	-19.72	peak
		25.42	19.60	45.02	54.00	-8.98	average

- Remark: 1. Measurement = Reading Level + Correct Factor.
 2. If Peak Result complies with AV limit, AV Result is deemed to comply with AV limit.
 3. Test setup: RBW: 1 MHz, VBW: 3 MHz, Sweep time: auto.
 4. Peak: Peak detector.
 5. AVG: VBW refer to section 6.2.
 6. For above 6.5GHz part, filter losses were only considered in the spurious frequency bands and the authorized band were not corrected for HPF losses. The proper operation of the transmitter prior to adding the filter to the measurement chain.
 7. Only the worst case emission was recorded, if it complies with the limit, the other emissions deemed to comply with the limit.



Test Mode	Channel	Polarization	Verdict
11AC20	5280	Vertical	PASS

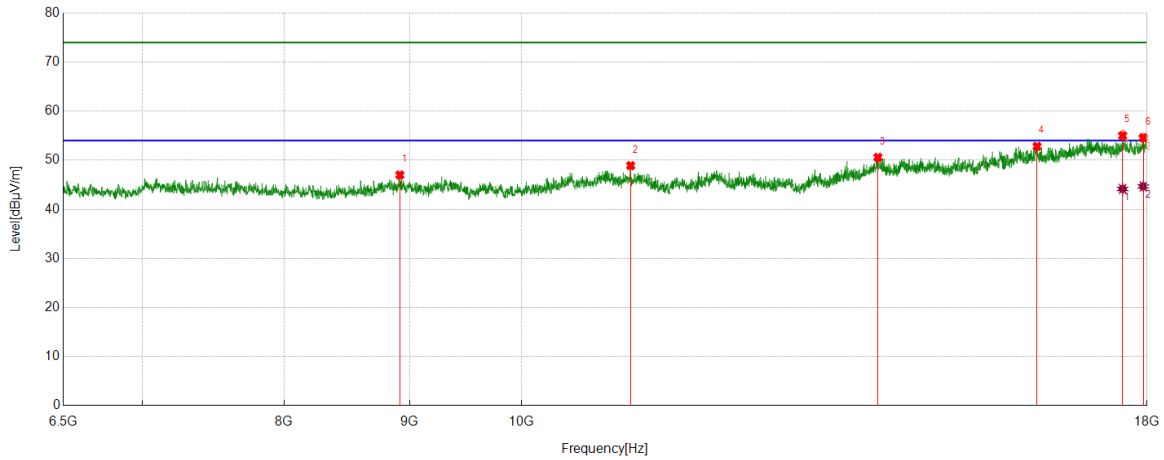


No.	Frequency	Reading Level	Correct Factor	Result	Limit	Margin	Remark
	(MHz)	(dBuV/m)	(dB)	(dBuV/m)	(dBuV/m)	(dB)	
1	10876.4794	36.09	12.26	48.35	74.00	-25.65	peak
2	11903.984	35.67	12.31	47.98	74.00	-26.02	peak
3	13985.831	34.95	15.22	50.17	74.00	-23.83	peak
4	15557.7596	37.10	15.49	52.59	74.00	-21.41	peak
5	17633.8556	35.34	19.12	54.46	74.00	-19.54	peak
		25.53	19.12	44.65	54.00	-9.35	average
6	17965.4942	34.84	19.45	54.29	74.00	-19.71	peak
		25.43	19.45	44.88	54.00	-9.12	average

- Remark: 1. Measurement = Reading Level + Correct Factor.
 2. If Peak Result complies with AV limit, AV Result is deemed to comply with AV limit.
 3. Test setup: RBW: 1 MHz, VBW: 3 MHz, Sweep time: auto.
 4. Peak: Peak detector.
 5. AVG: VBW refer to section 6.2.
 6. For above 6.5GHz part, filter losses were only considered in the spurious frequency bands and the authorized band were not corrected for HPF losses. The proper operation of the transmitter prior to adding the filter to the measurement chain.
 7. Only the worst case emission was recorded, if it complies with the limit, the other emissions deemed to comply with the limit.



Test Mode	Channel	Polarization	Verdict
11AC20	5320	Horizontal	PASS

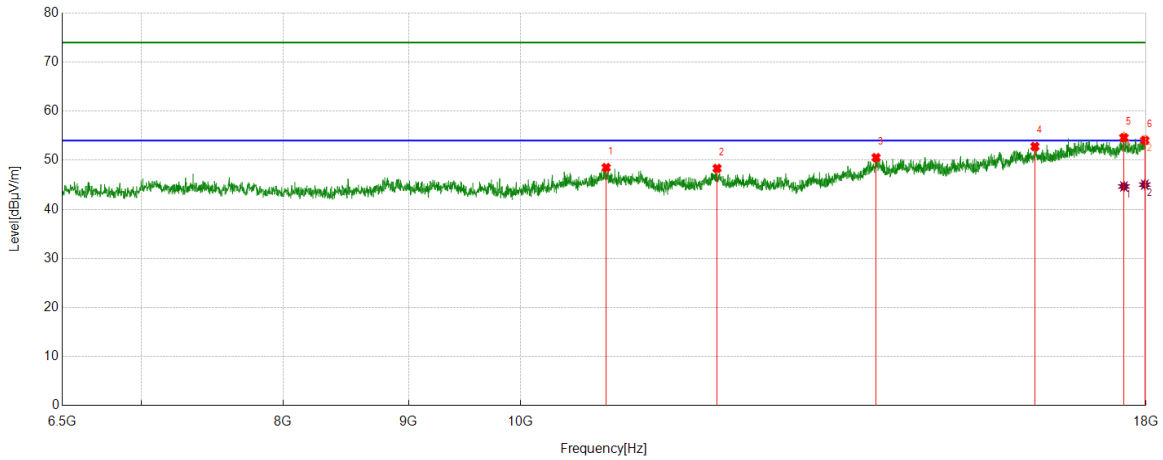


No.	Frequency	Reading Level	Correct Factor	Result	Limit	Margin	Remark
	(MHz)	(dBuV/m)	(dB)	(dBuV/m)	(dBuV/m)	(dB)	
1	8919.2365	37.31	9.69	47.00	74.00	-27.00	peak
2	11079.6799	36.60	12.30	48.90	74.00	-25.10	peak
3	13978.163	35.60	14.98	50.58	74.00	-23.42	peak
4	16232.5388	34.58	18.24	52.82	74.00	-21.18	peak
5	17591.6819	36.37	18.63	55.00	74.00	-19.00	peak
		25.53	18.63	44.16	54.00	-9.84	average
6	17936.7395	35.42	19.17	54.59	74.00	-19.41	peak
		25.49	19.17	44.66	54.00	-9.34	average

- Remark: 1. Measurement = Reading Level + Correct Factor.
 2. If Peak Result complies with AV limit, AV Result is deemed to comply with AV limit.
 3. Test setup: RBW: 1 MHz, VBW: 3 MHz, Sweep time: auto.
 4. Peak: Peak detector.
 5. AVG: VBW refer to section 6.2.
 6. For above 6.5GHz part, filter losses were only considered in the spurious frequency bands and the authorized band were not corrected for HPF losses. The proper operation of the transmitter prior to adding the filter to the measurement chain.
 7. Only the worst case emission was recorded, if it complies with the limit, the other emissions deemed to comply with the limit.



Test Mode	Channel	Polarization	Verdict
11AC20	5320	Vertical	PASS

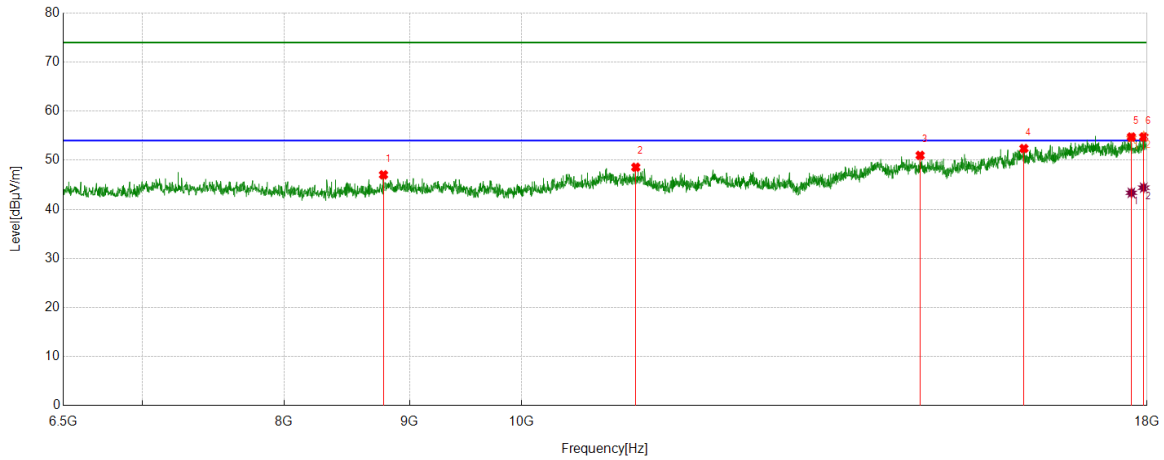


No.	Frequency	Reading Level	Correct Factor	Result	Limit	Margin	Remark
	(MHz)	(dBuV/m)	(dB)	(dBuV/m)	(dBuV/m)	(dB)	
1	10838.1397	36.41	12.10	48.51	74.00	-25.49	peak
2	12028.5881	35.75	12.59	48.34	74.00	-25.66	peak
3	13966.6611	35.65	14.89	50.54	74.00	-23.46	peak
4	16215.2859	35.06	17.74	52.80	74.00	-21.20	peak
5	17630.0217	35.55	19.04	54.59	74.00	-19.41	peak
		25.62	19.04	44.66	54.00	-9.34	average
6	17978.9132	34.56	19.50	54.06	74.00	-19.94	peak
		25.53	19.50	45.03	54.00	-8.97	average

- Remark: 1. Measurement = Reading Level + Correct Factor.
 2. If Peak Result complies with AV limit, AV Result is deemed to comply with AV limit.
 3. Test setup: RBW: 1 MHz, VBW: 3 MHz, Sweep time: auto.
 4. Peak: Peak detector.
 5. AVG: VBW refer to section 6.2.
 6. For above 6.5GHz part, filter losses were only considered in the spurious frequency bands and the authorized band were not corrected for HPF losses. The proper operation of the transmitter prior to adding the filter to the measurement chain.
 7. Only the worst case emission was recorded, if it complies with the limit, the other emissions deemed to comply with the limit.



Test Mode	Channel	Polarization	Verdict
11AC20	5500	Horizontal	PASS

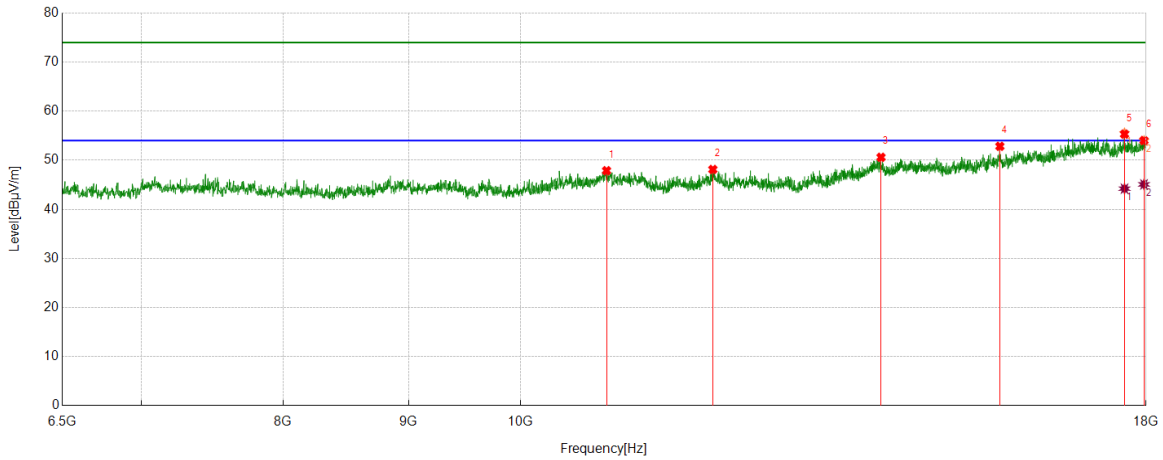


No.	Frequency	Reading Level	Correct Factor	Result	Limit	Margin	Remark
	(MHz)	(dBuV/m)	(dB)	(dBuV/m)	(dBuV/m)	(dB)	
1	8783.1305	37.74	9.29	47.03	74.00	-26.97	peak
2	11133.3556	36.43	12.14	48.57	74.00	-25.43	peak
3	14543.6739	35.63	15.36	50.99	74.00	-23.01	peak
4	16033.1722	35.81	16.58	52.39	74.00	-21.61	peak
5	17737.3729	35.44	19.30	54.74	74.00	-19.26	peak
		24.07	19.30	43.37	54.00	-10.63	average
6	17944.4074	35.65	19.09	54.74	74.00	-19.26	peak
		25.32	19.09	44.41	54.00	-9.59	average

- Remark: 1. Measurement = Reading Level + Correct Factor.
 2. If Peak Result complies with AV limit, AV Result is deemed to comply with AV limit.
 3. Test setup: RBW: 1 MHz, VBW: 3 MHz, Sweep time: auto.
 4. Peak: Peak detector.
 5. AVG: VBW refer to section 6.2.
 6. For above 6.5GHz part, filter losses were only considered in the spurious frequency bands and the authorized band were not corrected for HPF losses. The proper operation of the transmitter prior to adding the filter to the measurement chain.
 7. Only the worst case emission was recorded, if it complies with the limit, the other emissions deemed to comply with the limit.



Test Mode	Channel	Polarization	Verdict
11AC20	5500	Vertical	PASS

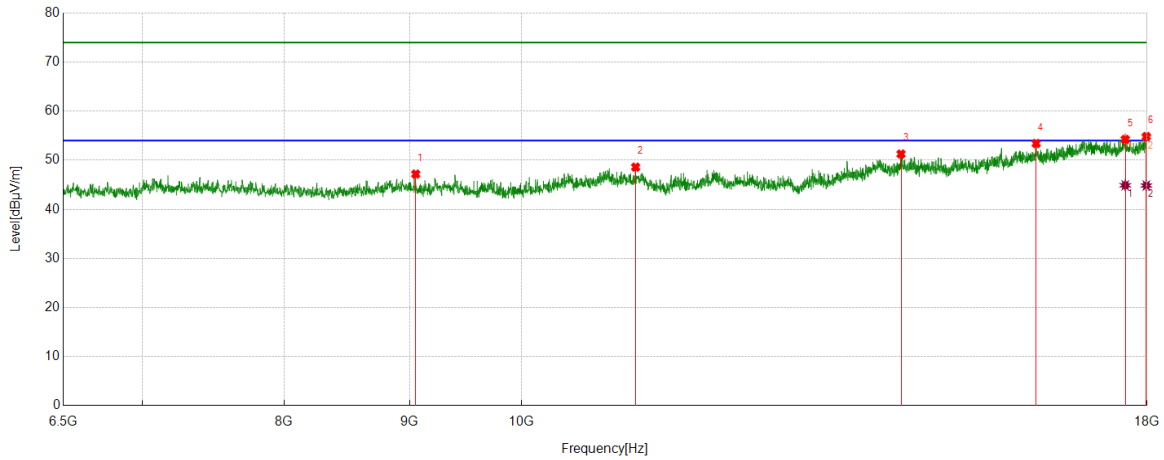


No.	Frequency	Reading Level	Correct Factor	Result	Limit	Margin	Remark
	(MHz)	(dBuV/m)	(dB)	(dBuV/m)	(dBuV/m)	(dB)	
1	10841.9737	35.77	12.10	47.87	74.00	-26.13	peak
2	11980.6634	35.51	12.61	48.12	74.00	-25.88	peak
3	14031.8386	35.25	15.35	50.60	74.00	-23.40	peak
4	15690.0317	35.74	17.10	52.84	74.00	-21.16	peak
5	17639.6066	36.10	19.22	55.32	74.00	-18.68	peak
		24.99	19.22	44.21	54.00	-9.79	average
6	17965.4942	34.57	19.45	54.02	74.00	-19.98	peak
		25.63	19.45	45.08	54.00	-8.92	average

- Remark: 1. Measurement = Reading Level + Correct Factor.
 2. If Peak Result complies with AV limit, AV Result is deemed to comply with AV limit.
 3. Test setup: RBW: 1 MHz, VBW: 3 MHz, Sweep time: auto.
 4. Peak: Peak detector.
 5. AVG: VBW refer to section 6.2.
 6. For above 6.5GHz part, filter losses were only considered in the spurious frequency bands and the authorized band were not corrected for HPF losses. The proper operation of the transmitter prior to adding the filter to the measurement chain.
 7. Only the worst case emission was recorded, if it complies with the limit, the other emissions deemed to comply with the limit.



Test Mode	Channel	Polarization	Verdict
11AC20	5580	Horizontal	PASS

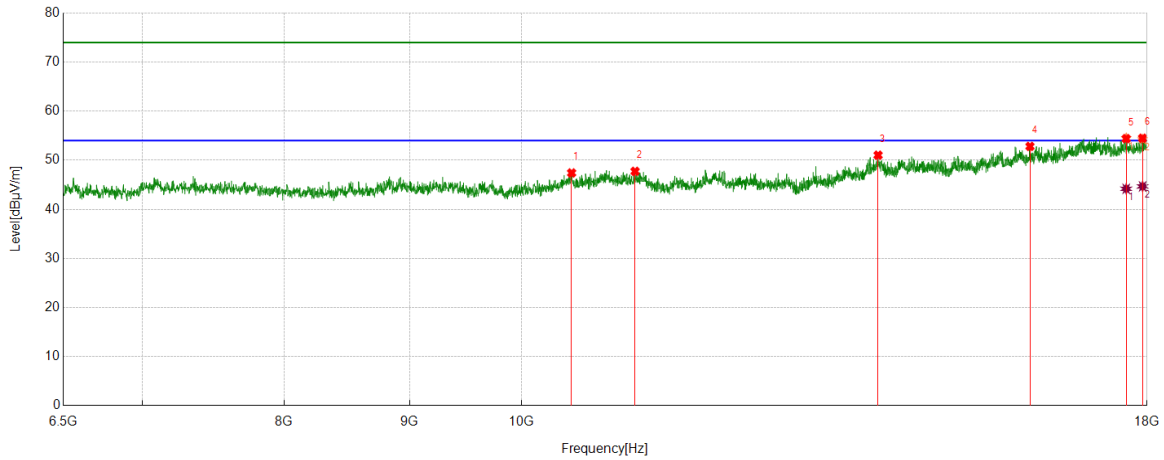


No.	Frequency	Reading Level	Correct Factor	Result	Limit	Margin	Remark
	(MHz)	(dBuV/m)	(dB)	(dBuV/m)	(dBuV/m)	(dB)	
1	9053.4256	37.72	9.46	47.18	74.00	-26.82	peak
2	11131.4386	36.45	12.15	48.60	74.00	-25.40	peak
3	14284.8808	36.17	15.10	51.27	74.00	-22.73	peak
4	16219.1199	35.50	17.92	53.42	74.00	-20.58	peak
5	17635.7726	35.08	19.15	54.23	74.00	-19.77	peak
		25.75	19.15	44.90	54.00	-9.10	average
6	17988.4981	35.26	19.56	54.82	74.00	-19.18	peak
		25.29	19.56	44.85	54.00	-9.15	average

- Remark: 1. Measurement = Reading Level + Correct Factor.
 2. If Peak Result complies with AV limit, AV Result is deemed to comply with AV limit.
 3. Test setup: RBW: 1 MHz, VBW: 3 MHz, Sweep time: auto.
 4. Peak: Peak detector.
 5. AVG: VBW refer to section 6.2.
 6. For above 6.5GHz part, filter losses were only considered in the spurious frequency bands and the authorized band were not corrected for HPF losses. The proper operation of the transmitter prior to adding the filter to the measurement chain.
 7. Only the worst case emission was recorded, if it complies with the limit, the other emissions deemed to comply with the limit.



Test Mode	Channel	Polarization	Verdict
11AC20	5580	Vertical	PASS

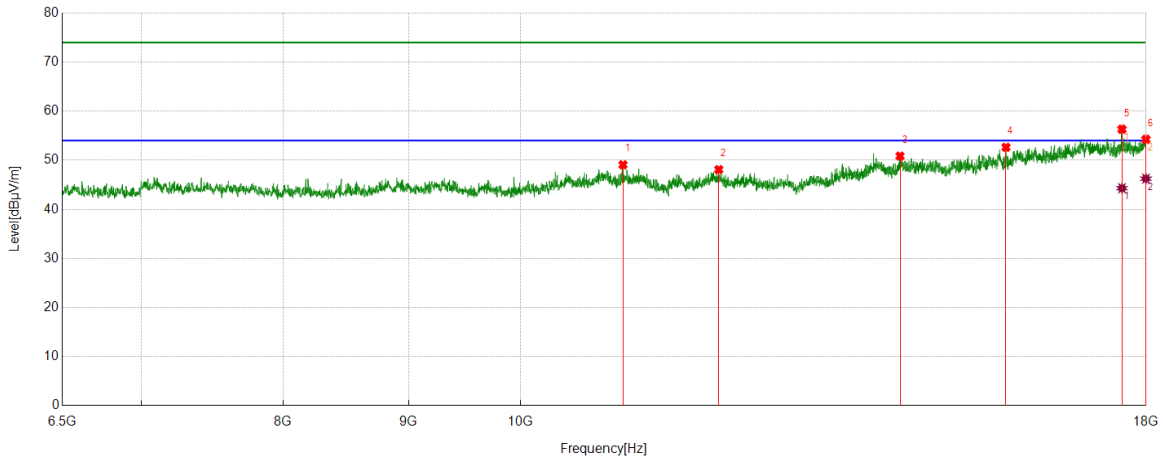


No.	Frequency	Reading Level	Correct Factor	Result	Limit	Margin	Remark
	(MHz)	(dBuV/m)	(dB)	(dBuV/m)	(dBuV/m)	(dB)	
1	10481.5803	35.79	11.62	47.41	74.00	-26.59	peak
2	11125.6876	35.57	12.17	47.74	74.00	-26.26	peak
3	13980.08	36.02	15.01	51.03	74.00	-22.97	peak
4	16125.1875	35.92	16.90	52.82	74.00	-21.18	peak
5	17651.1085	35.68	18.72	54.40	74.00	-19.60	peak
		25.46	18.72	44.18	54.00	-9.82	average
6	17925.2375	35.20	19.29	54.49	74.00	-19.51	peak
		25.38	19.29	44.67	54.00	-9.33	average

- Remark: 1. Measurement = Reading Level + Correct Factor.
 2. If Peak Result complies with AV limit, AV Result is deemed to comply with AV limit.
 3. Test setup: RBW: 1 MHz, VBW: 3 MHz, Sweep time: auto.
 4. Peak: Peak detector.
 5. AVG: VBW refer to section 6.2.
 6. For above 6.5GHz part, filter losses were only considered in the spurious frequency bands and the authorized band were not corrected for HPF losses. The proper operation of the transmitter prior to adding the filter to the measurement chain.
 7. Only the worst case emission was recorded, if it complies with the limit, the other emissions deemed to comply with the limit.



Test Mode	Channel	Polarization	Verdict
11AC20	5720	Horizontal	PASS

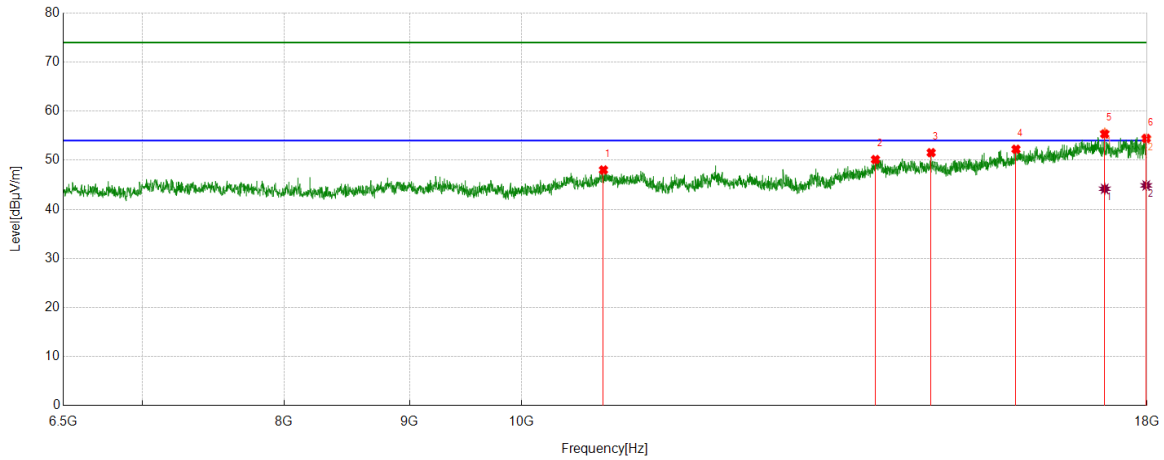


No.	Frequency	Reading Level	Correct Factor	Result	Limit	Margin	Remark
	(MHz)	(dBuV/m)	(dB)	(dBuV/m)	(dBuV/m)	(dB)	
1	11010.6684	36.65	12.43	49.08	74.00	-24.92	peak
2	12047.758	35.59	12.51	48.10	74.00	-25.90	peak
3	14284.8808	35.74	15.10	50.84	74.00	-23.16	peak
4	15780.13	36.20	16.44	52.64	74.00	-21.36	peak
5	17597.4329	37.56	18.76	56.32	74.00	-17.68	peak
		25.54	18.76	44.30	54.00	-9.70	average
6	17998.083	34.66	19.60	54.26	74.00	-19.74	peak
		26.65	19.60	46.25	54.00	-7.75	average

- Remark: 1. Measurement = Reading Level + Correct Factor.
 2. If Peak Result complies with AV limit, AV Result is deemed to comply with AV limit.
 3. Test setup: RBW: 1 MHz, VBW: 3 MHz, Sweep time: auto.
 4. Peak: Peak detector.
 5. AVG: VBW refer to section 6.2.
 6. For above 6.5GHz part, filter losses were only considered in the spurious frequency bands and the authorized band were not corrected for HPF losses. The proper operation of the transmitter prior to adding the filter to the measurement chain.
 7. Only the worst case emission was recorded, if it complies with the limit, the other emissions deemed to comply with the limit.



Test Mode	Channel	Polarization	Verdict
11AC20	5720	Vertical	PASS

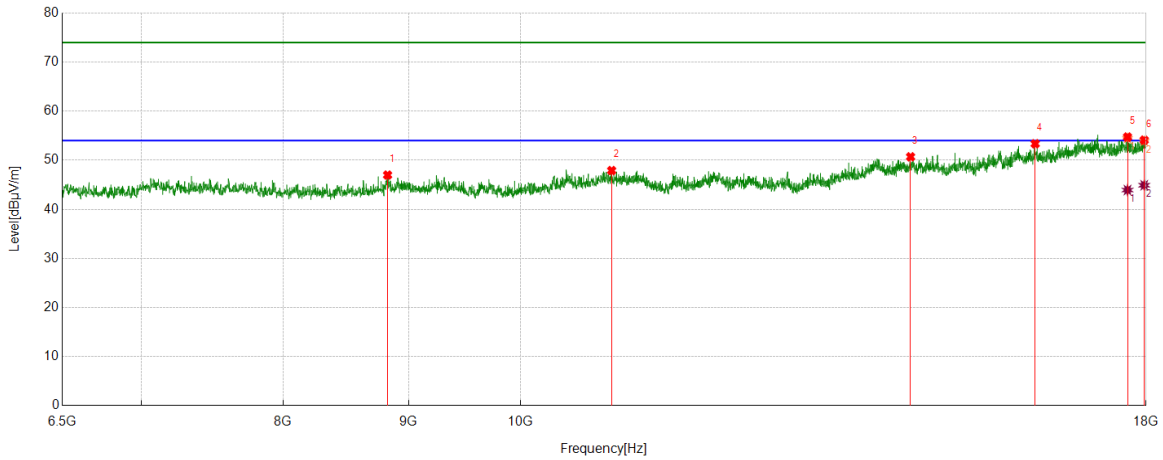


No.	Frequency	Reading Level	Correct Factor	Result	Limit	Margin	Remark
	(MHz)	(dBuV/m)	(dB)	(dBuV/m)	(dBuV/m)	(dB)	
1	10799.8	35.97	12.05	48.02	74.00	-25.98	peak
2	13945.5743	35.23	14.91	50.14	74.00	-23.86	peak
3	14695.1159	36.79	14.75	51.54	74.00	-22.46	peak
4	15914.3191	34.58	17.66	52.24	74.00	-21.76	peak
5	17298.3831	36.73	18.61	55.34	74.00	-18.66	peak
		25.57	18.61	44.18	54.00	-9.82	average
6	17986.5811	34.90	19.54	54.44	74.00	-19.56	peak
		25.33	19.54	44.87	54.00	-9.13	average

- Remark: 1. Measurement = Reading Level + Correct Factor.
 2. If Peak Result complies with AV limit, AV Result is deemed to comply with AV limit.
 3. Test setup: RBW: 1 MHz, VBW: 3 MHz, Sweep time: auto.
 4. Peak: Peak detector.
 5. AVG: VBW refer to section 6.2.
 6. For above 6.5GHz part, filter losses were only considered in the spurious frequency bands and the authorized band were not corrected for HPF losses. The proper operation of the transmitter prior to adding the filter to the measurement chain.
 7. Only the worst case emission was recorded, if it complies with the limit, the other emissions deemed to comply with the limit.



Test Mode	Channel	Polarization	Verdict
11AC20	5745	Horizontal	PASS

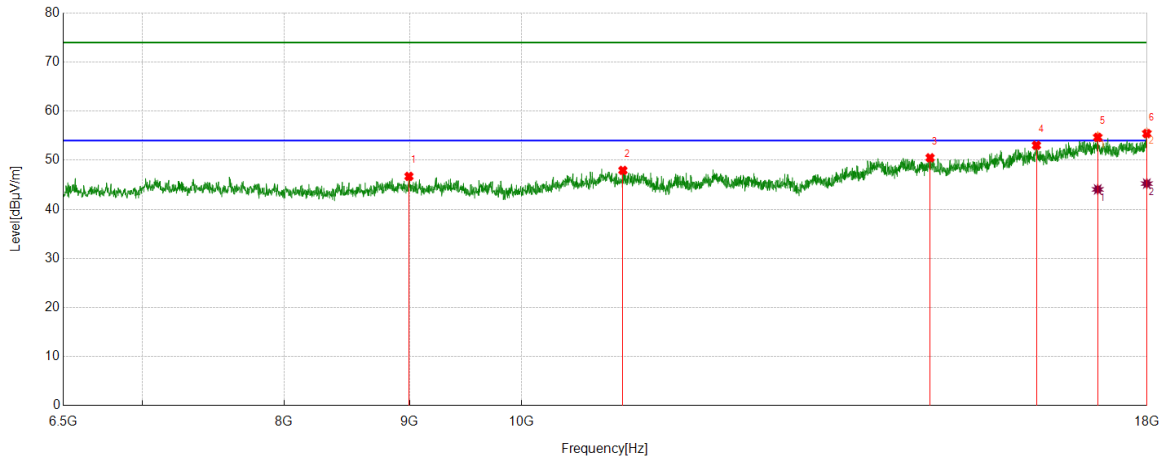


No.	Frequency	Reading Level	Correct Factor	Result	Limit	Margin	Remark
	(MHz)	(dBuV/m)	(dB)	(dBuV/m)	(dBuV/m)	(dB)	
1	8825.3042	37.42	9.56	46.98	74.00	-27.02	peak
2	10893.7323	35.69	12.21	47.90	74.00	-26.10	peak
3	14426.7378	35.51	15.19	50.70	74.00	-23.30	peak
4	16219.1199	35.44	17.92	53.36	74.00	-20.64	peak
5	17689.4482	36.16	18.57	54.73	74.00	-19.27	peak
		25.36	18.57	43.93	54.00	-10.07	average
6	17969.3282	34.42	19.68	54.10	74.00	-19.90	peak
		25.23	19.68	44.91	54.00	-9.09	average

- Remark: 1. Measurement = Reading Level + Correct Factor.
 2. If Peak Result complies with AV limit, AV Result is deemed to comply with AV limit.
 3. Test setup: RBW: 1 MHz, VBW: 3 MHz, Sweep time: auto.
 4. Peak: Peak detector.
 5. AVG: VBW refer to section 6.2.
 6. For above 6.5GHz part, filter losses were only considered in the spurious frequency bands and the authorized band were not corrected for HPF losses. The proper operation of the transmitter prior to adding the filter to the measurement chain.
 7. Only the worst case emission was recorded, if it complies with the limit, the other emissions deemed to comply with the limit.



Test Mode	Channel	Polarization	Verdict
11AC20	5745	Vertical	PASS

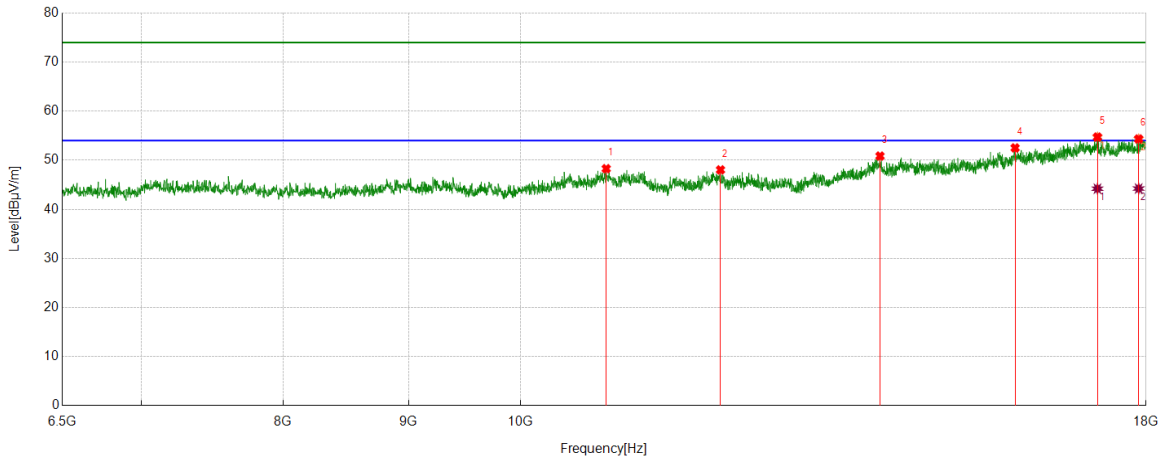


No.	Frequency	Reading Level	Correct Factor	Result	Limit	Margin	Remark
	(MHz)	(dBuV/m)	(dB)	(dBuV/m)	(dBuV/m)	(dB)	
1	8995.916	37.07	9.64	46.71	74.00	-27.29	peak
2	10999.1665	35.67	12.26	47.93	74.00	-26.07	peak
3	14679.78	35.57	14.93	50.50	74.00	-23.50	peak
4	16222.9538	34.99	18.05	53.04	74.00	-20.96	peak
5	17185.2809	35.89	18.77	54.66	74.00	-19.34	peak
		25.29	18.77	44.06	54.00	-9.94	average
6	17996.166	35.82	19.60	55.42	74.00	-18.58	peak
		25.64	19.60	45.24	54.00	-8.76	average

- Remark: 1. Measurement = Reading Level + Correct Factor.
 2. If Peak Result complies with AV limit, AV Result is deemed to comply with AV limit.
 3. Test setup: RBW: 1 MHz, VBW: 3 MHz, Sweep time: auto.
 4. Peak: Peak detector.
 5. AVG: VBW refer to section 6.2.
 6. For above 6.5GHz part, filter losses were only considered in the spurious frequency bands and the authorized band were not corrected for HPF losses. The proper operation of the transmitter prior to adding the filter to the measurement chain.
 7. Only the worst case emission was recorded, if it complies with the limit, the other emissions deemed to comply with the limit.



Test Mode	Channel	Polarization	Verdict
11AC20	5785	Horizontal	PASS

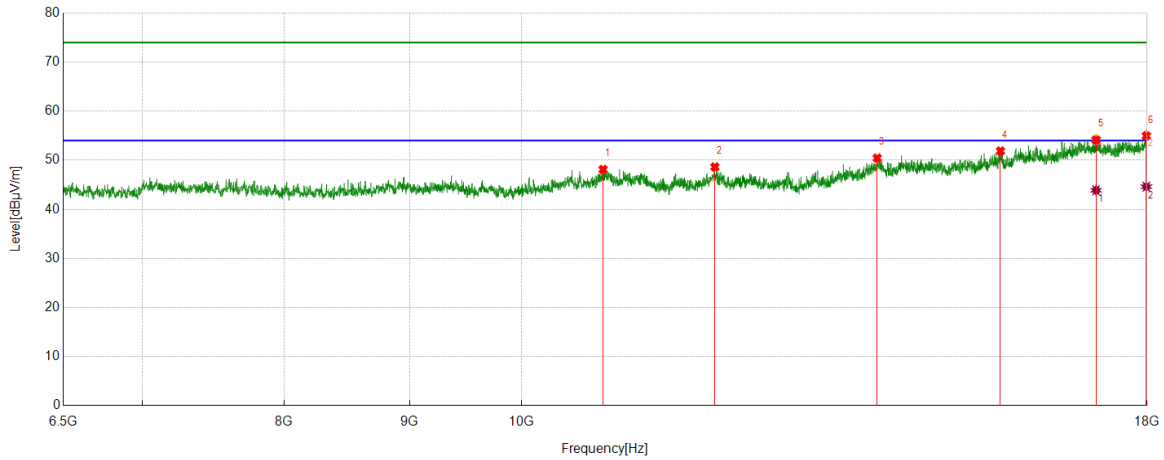


No.	Frequency	Reading Level	Correct Factor	Result	Limit	Margin	Remark
	(MHz)	(dBuV/m)	(dB)	(dBuV/m)	(dBuV/m)	(dB)	
1	10838.1397	36.18	12.10	48.28	74.00	-25.72	peak
2	12066.9278	35.38	12.66	48.04	74.00	-25.96	peak
3	14018.4197	35.45	15.40	50.85	74.00	-23.15	peak
4	15916.236	34.80	17.71	52.51	74.00	-21.49	peak
5	17196.7828	35.85	18.87	54.72	74.00	-19.28	peak
		25.33	18.87	44.20	54.00	-9.80	average
6	17875.3959	35.27	19.06	54.33	74.00	-19.67	peak
		25.17	19.06	44.23	54.00	-9.77	average

- Remark: 1. Measurement = Reading Level + Correct Factor.
 2. If Peak Result complies with AV limit, AV Result is deemed to comply with AV limit.
 3. Test setup: RBW: 1 MHz, VBW: 3 MHz, Sweep time: auto.
 4. Peak: Peak detector.
 5. AVG: VBW refer to section 6.2.
 6. For above 6.5GHz part, filter losses were only considered in the spurious frequency bands and the authorized band were not corrected for HPF losses. The proper operation of the transmitter prior to adding the filter to the measurement chain.
 7. Only the worst case emission was recorded, if it complies with the limit, the other emissions deemed to comply with the limit.



Test Mode	Channel	Polarization	Verdict
11AC20	5785	Vertical	PASS

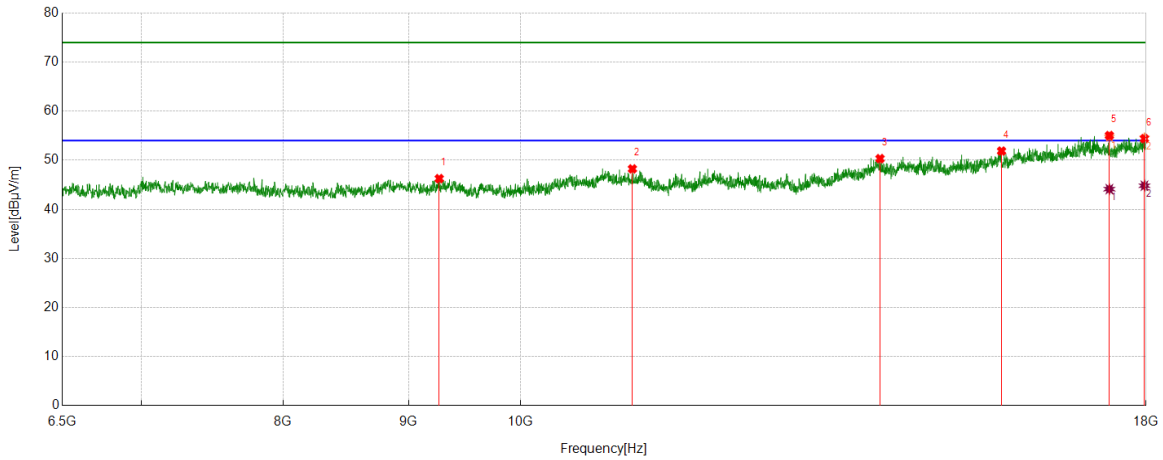


No.	Frequency	Reading Level	Correct Factor	Result	Limit	Margin	Remark
	(MHz)	(dBuV/m)	(dB)	(dBuV/m)	(dBuV/m)	(dB)	
1	10795.966	36.09	12.03	48.12	74.00	-25.88	peak
2	11992.1654	35.75	12.89	48.64	74.00	-25.36	peak
3	13968.5781	35.56	14.88	50.44	74.00	-23.56	peak
4	15684.2807	34.61	17.27	51.88	74.00	-22.12	peak
5	17158.4431	35.38	18.76	54.14	74.00	-19.86	peak
		25.12	18.76	43.88	54.00	-10.12	average
6	17988.4981	35.40	19.56	54.96	74.00	-19.04	peak
		25.05	19.56	44.61	54.00	-9.39	average

- Remark: 1. Measurement = Reading Level + Correct Factor.
 2. If Peak Result complies with AV limit, AV Result is deemed to comply with AV limit.
 3. Test setup: RBW: 1 MHz, VBW: 3 MHz, Sweep time: auto.
 4. Peak: Peak detector.
 5. AVG: VBW refer to section 6.2.
 6. For above 6.5GHz part, filter losses were only considered in the spurious frequency bands and the authorized band were not corrected for HPF losses. The proper operation of the transmitter prior to adding the filter to the measurement chain.
 7. Only the worst case emission was recorded, if it complies with the limit, the other emissions deemed to comply with the limit.



Test Mode	Channel	Polarization	Verdict
11AC20	5825	Horizontal	PASS

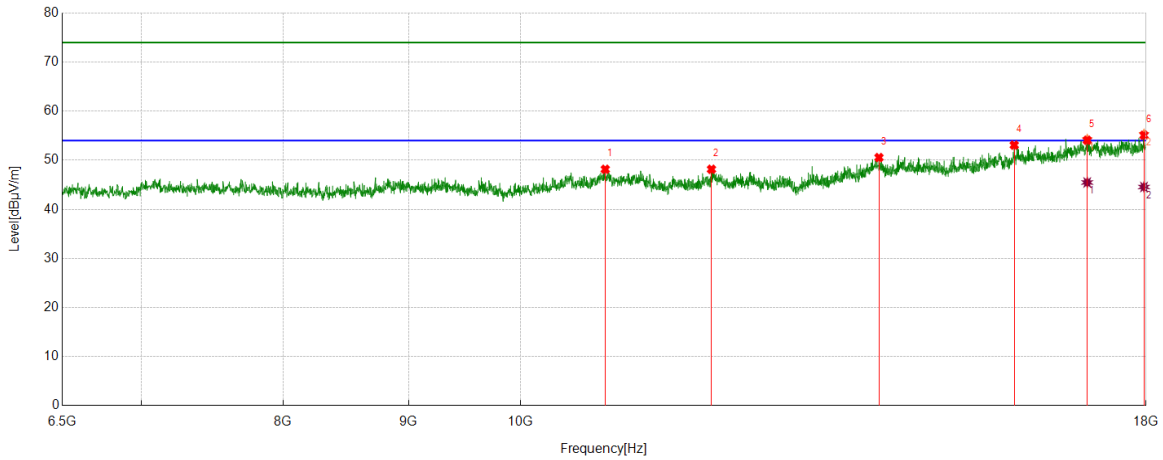


No.	Frequency	Reading Level	Correct Factor	Result	Limit	Margin	Remark
	(MHz)	(dBuV/m)	(dB)	(dBuV/m)	(dBuV/m)	(dB)	
1	9264.294	36.83	9.43	46.26	74.00	-27.74	peak
2	11108.4347	36.03	12.21	48.24	74.00	-25.76	peak
3	14018.4197	34.93	15.40	50.33	74.00	-23.67	peak
4	15714.9525	35.66	16.21	51.87	74.00	-22.13	peak
5	17390.3984	35.91	19.12	55.03	74.00	-18.97	peak
		25.00	19.12	44.12	54.00	-9.88	average
6	17973.1622	34.76	19.64	54.40	74.00	-19.60	peak
		25.17	19.64	44.81	54.00	-9.19	average

- Remark: 1. Measurement = Reading Level + Correct Factor.
 2. If Peak Result complies with AV limit, AV Result is deemed to comply with AV limit.
 3. Test setup: RBW: 1 MHz, VBW: 3 MHz, Sweep time: auto.
 4. Peak: Peak detector.
 5. AVG: VBW refer to section 6.2.
 6. For above 6.5GHz part, filter losses were only considered in the spurious frequency bands and the authorized band were not corrected for HPF losses. The proper operation of the transmitter prior to adding the filter to the measurement chain.
 7. Only the worst case emission was recorded, if it complies with the limit, the other emissions deemed to comply with the limit.



Test Mode	Channel	Polarization	Verdict
11AC20	5825	Vertical	PASS

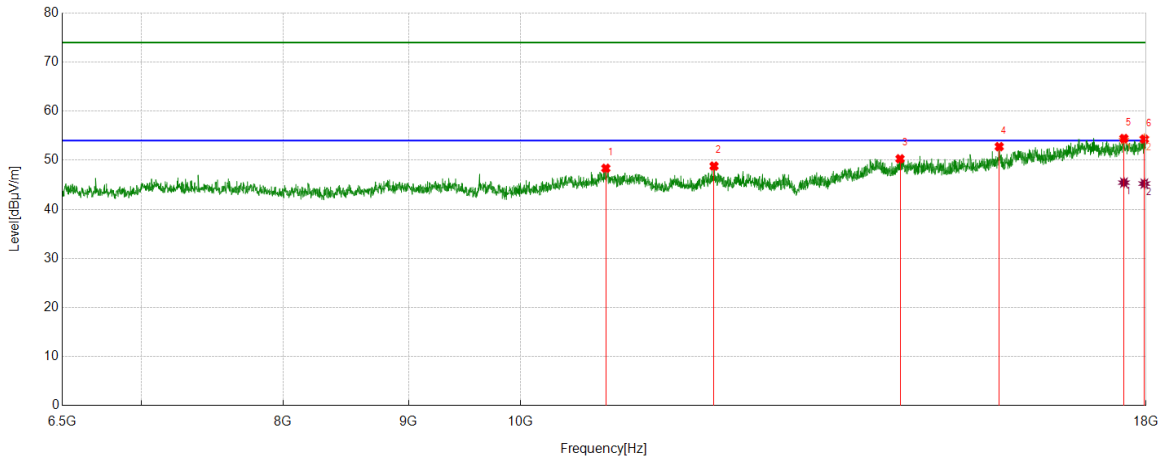


No.	Frequency	Reading Level	Correct Factor	Result	Limit	Margin	Remark
	(MHz)	(dBuV/m)	(dB)	(dBuV/m)	(dBuV/m)	(dB)	
1	10828.5548	35.96	12.20	48.16	74.00	-25.84	peak
2	11965.3276	35.58	12.58	48.16	74.00	-25.84	peak
3	14005.0008	35.14	15.41	50.55	74.00	-23.45	peak
4	15902.8171	36.10	16.98	53.08	74.00	-20.92	peak
5	17031.922	34.58	19.49	54.07	74.00	-19.93	peak
		25.98	19.49	45.47	54.00	-8.53	average
6	17965.4942	35.63	19.45	55.08	74.00	-18.92	peak
		25.10	19.45	44.55	54.00	-9.45	average

- Remark: 1. Measurement = Reading Level + Correct Factor.
 2. If Peak Result complies with AV limit, AV Result is deemed to comply with AV limit.
 3. Test setup: RBW: 1 MHz, VBW: 3 MHz, Sweep time: auto.
 4. Peak: Peak detector.
 5. AVG: VBW refer to section 6.2.
 6. For above 6.5GHz part, filter losses were only considered in the spurious frequency bands and the authorized band were not corrected for HPF losses. The proper operation of the transmitter prior to adding the filter to the measurement chain.
 7. Only the worst case emission was recorded, if it complies with the limit, the other emissions deemed to comply with the limit.



Test Mode	Channel	Polarization	Verdict
11AC40	5190	Horizontal	PASS

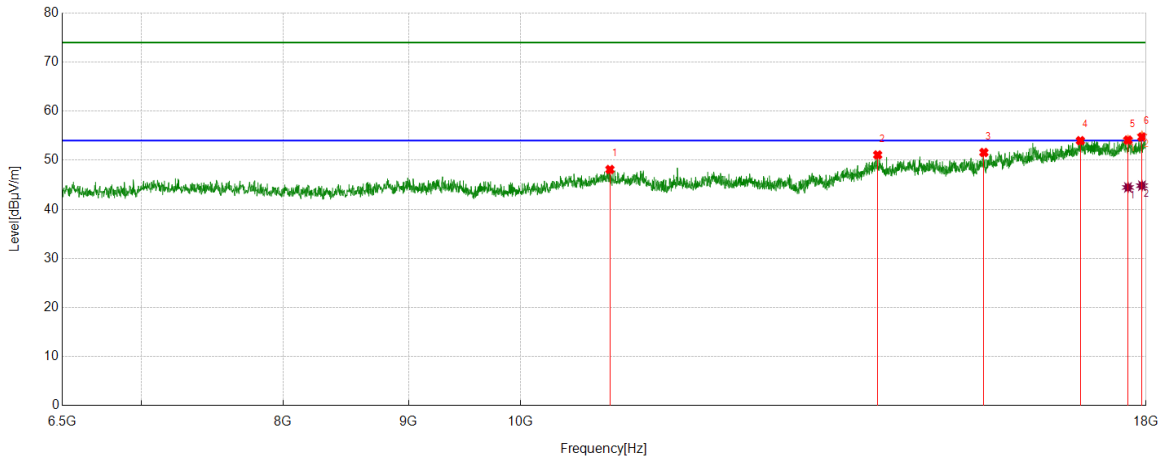


No.	Frequency	Reading Level	Correct Factor	Result	Limit	Margin	Remark
	(MHz)	(dBuV/m)	(dB)	(dBuV/m)	(dBuV/m)	(dB)	
1	10834.3057	36.22	12.14	48.36	74.00	-25.64	peak
2	11994.0823	35.92	12.89	48.81	74.00	-25.19	peak
3	14284.8808	35.19	15.10	50.29	74.00	-23.71	peak
4	15680.4467	35.38	17.39	52.77	74.00	-21.23	peak
5	17630.0217	35.38	19.04	54.42	74.00	-19.58	peak
		26.40	19.04	45.44	54.00	-8.56	average
6	17971.2452	34.61	19.69	54.30	74.00	-19.70	peak
		25.55	19.69	45.24	54.00	-8.76	average

- Remark: 1. Measurement = Reading Level + Correct Factor.
 2. If Peak Result complies with AV limit, AV Result is deemed to comply with AV limit.
 3. Test setup: RBW: 1 MHz, VBW: 3 MHz, Sweep time: auto.
 4. Peak: Peak detector.
 5. AVG: VBW refer to section 6.2.
 6. For above 6.5GHz part, filter losses were only considered in the spurious frequency bands and the authorized band were not corrected for HPF losses. The proper operation of the transmitter prior to adding the filter to the measurement chain.
 7. Only the worst case emission was recorded, if it complies with the limit, the other emissions deemed to comply with the limit.



Test Mode	Channel	Polarization	Verdict
11AC40	5190	Vertical	PASS

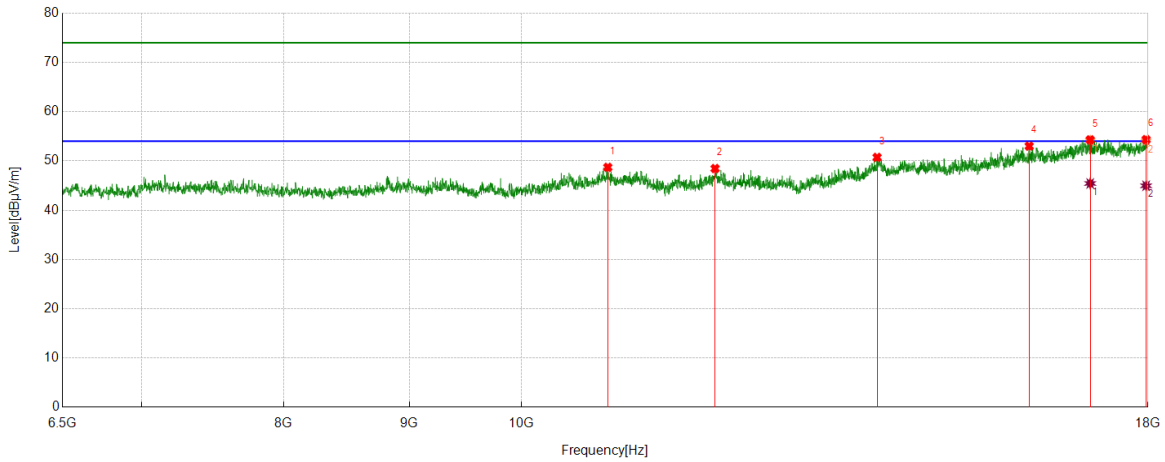


No.	Frequency	Reading Level	Correct Factor	Result	Limit	Margin	Remark
	(MHz)	(dBuV/m)	(dB)	(dBuV/m)	(dBuV/m)	(dB)	
1	10876.4794	35.85	12.26	48.11	74.00	-25.89	peak
2	13987.748	35.79	15.29	51.08	74.00	-22.92	peak
3	15456.1594	35.99	15.59	51.58	74.00	-22.42	peak
4	16922.6538	35.33	18.65	53.98	74.00	-20.02	peak
5	17697.1162	35.42	18.68	54.10	74.00	-19.90	peak
		25.78	18.68	44.46	54.00	-9.54	average
6	17930.9885	35.54	19.19	54.73	74.00	-19.27	peak
		25.63	19.19	44.82	54.00	-9.18	average

- Remark: 1. Measurement = Reading Level + Correct Factor.
 2. If Peak Result complies with AV limit, AV Result is deemed to comply with AV limit.
 3. Test setup: RBW: 1 MHz, VBW: 3 MHz, Sweep time: auto.
 4. Peak: Peak detector.
 5. AVG: VBW refer to section 6.2.
 6. For above 6.5GHz part, filter losses were only considered in the spurious frequency bands and the authorized band were not corrected for HPF losses. The proper operation of the transmitter prior to adding the filter to the measurement chain.
 7. Only the worst case emission was recorded, if it complies with the limit, the other emissions deemed to comply with the limit.



Test Mode	Channel	Polarization	Verdict
11AC40	5230	Horizontal	PASS

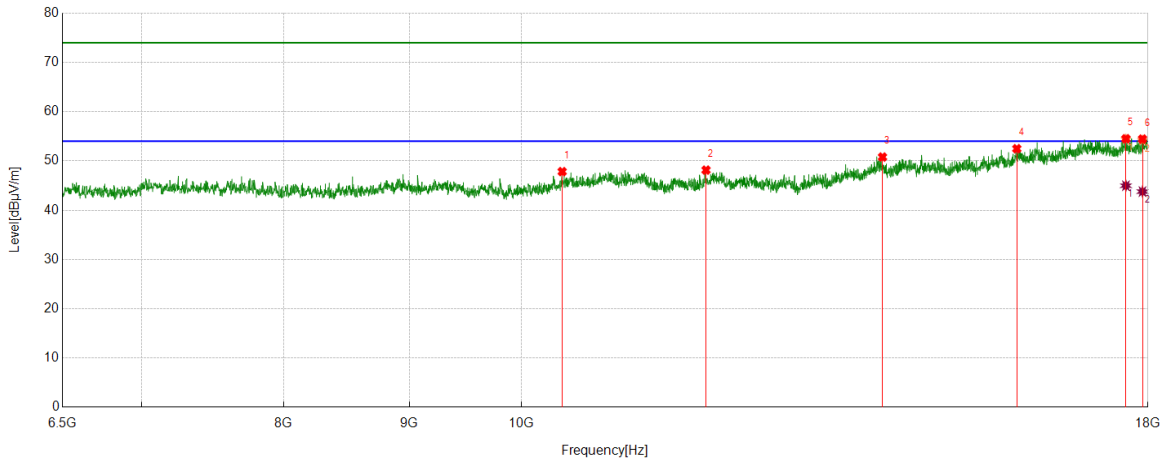


No.	Frequency	Reading Level	Correct Factor	Result	Limit	Margin	Remark
	(MHz)	(dBuV/m)	(dB)	(dBuV/m)	(dBuV/m)	(dB)	
1	10843.8906	36.58	12.12	48.70	74.00	-25.30	peak
2	11992.1654	35.56	12.89	48.45	74.00	-25.55	peak
3	13960.9102	35.81	14.91	50.72	74.00	-23.28	peak
4	16102.1837	36.35	16.65	53.00	74.00	-21.00	peak
5	17051.0918	34.74	19.54	54.28	74.00	-19.72	peak
		25.89	19.54	45.43	54.00	-8.57	average
6	17969.3282	34.64	19.68	54.32	74.00	-19.68	peak
		25.28	19.68	44.96	54.00	-9.04	average

- Remark: 1. Measurement = Reading Level + Correct Factor.
 2. If Peak Result complies with AV limit, AV Result is deemed to comply with AV limit.
 3. Test setup: RBW: 1 MHz, VBW: 3 MHz, Sweep time: auto.
 4. Peak: Peak detector.
 5. AVG: VBW refer to section 6.2.
 6. For above 6.5GHz part, filter losses were only considered in the spurious frequency bands and the authorized band were not corrected for HPF losses. The proper operation of the transmitter prior to adding the filter to the measurement chain.
 7. Only the worst case emission was recorded, if it complies with the limit, the other emissions deemed to comply with the limit.



Test Mode	Channel	Polarization	Verdict
11AC40	5230	Vertical	PASS

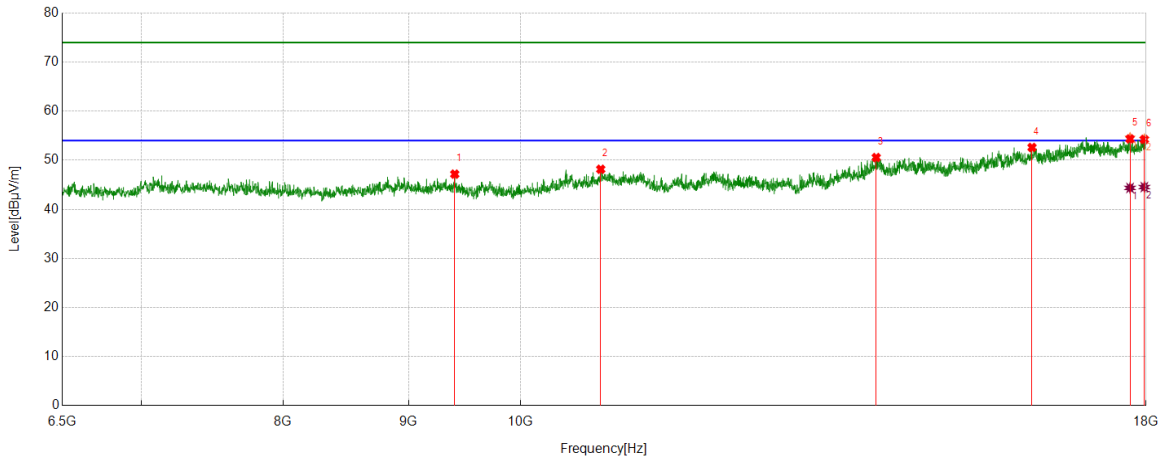


No.	Frequency	Reading Level	Correct Factor	Result	Limit	Margin	Remark
	(MHz)	(dBuV/m)	(dB)	(dBuV/m)	(dBuV/m)	(dB)	
1	10389.5649	36.84	10.99	47.83	74.00	-26.17	peak
2	11890.5651	36.01	12.13	48.14	74.00	-25.86	peak
3	14031.8386	35.44	15.35	50.79	74.00	-23.21	peak
4	15916.236	34.77	17.71	52.48	74.00	-21.52	peak
5	17631.9387	35.42	19.08	54.50	74.00	-19.50	peak
		25.89	19.08	44.97	54.00	-9.03	average
6	17907.9847	35.39	19.05	54.44	74.00	-19.56	peak
		24.73	19.05	43.78	54.00	-10.22	average

- Remark: 1. Measurement = Reading Level + Correct Factor.
 2. If Peak Result complies with AV limit, AV Result is deemed to comply with AV limit.
 3. Test setup: RBW: 1 MHz, VBW: 3 MHz, Sweep time: auto.
 4. Peak: Peak detector.
 5. AVG: VBW refer to section 6.2.
 6. For above 6.5GHz part, filter losses were only considered in the spurious frequency bands and the authorized band were not corrected for HPF losses. The proper operation of the transmitter prior to adding the filter to the measurement chain.
 7. Only the worst case emission was recorded, if it complies with the limit, the other emissions deemed to comply with the limit.



Test Mode	Channel	Polarization	Verdict
11AC40	5270	Horizontal	PASS

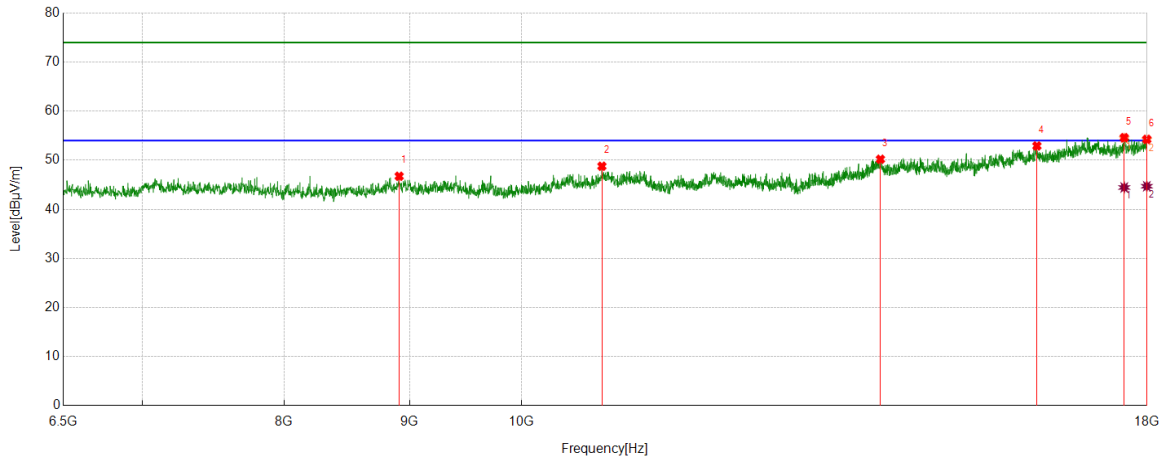


No.	Frequency	Reading Level	Correct Factor	Result	Limit	Margin	Remark
	(MHz)	(dBuV/m)	(dB)	(dBuV/m)	(dBuV/m)	(dB)	
1	9400.4001	37.66	9.51	47.17	74.00	-26.83	peak
2	10782.5471	36.16	12.00	48.16	74.00	-25.84	peak
3	13968.5781	35.67	14.88	50.55	74.00	-23.45	peak
4	16171.1952	35.75	16.86	52.61	74.00	-21.39	peak
5	17731.6219	34.79	19.55	54.34	74.00	-19.66	peak
		24.81	19.55	44.36	54.00	-9.64	average
6	17971.2452	34.55	19.69	54.24	74.00	-19.76	peak
		24.84	19.69	44.53	54.00	-9.47	average

- Remark: 1. Measurement = Reading Level + Correct Factor.
 2. If Peak Result complies with AV limit, AV Result is deemed to comply with AV limit.
 3. Test setup: RBW: 1 MHz, VBW: 3 MHz, Sweep time: auto.
 4. Peak: Peak detector.
 5. AVG: VBW refer to section 6.2.
 6. For above 6.5GHz part, filter losses were only considered in the spurious frequency bands and the authorized band were not corrected for HPF losses. The proper operation of the transmitter prior to adding the filter to the measurement chain.
 7. Only the worst case emission was recorded, if it complies with the limit, the other emissions deemed to comply with the limit.



Test Mode	Channel	Polarization	Verdict
11AC40	5270	Vertical	PASS



No.	Frequency	Reading Level	Correct Factor	Result	Limit	Margin	Remark
	(MHz)	(dBuV/m)	(dB)	(dBuV/m)	(dBuV/m)	(dB)	
1	8913.4856	37.17	9.57	46.74	74.00	-27.26	peak
2	10784.4641	36.78	12.00	48.78	74.00	-25.22	peak
3	14010.7518	34.82	15.38	50.20	74.00	-23.80	peak
4	16230.6218	34.66	18.25	52.91	74.00	-21.09	peak
5	17618.5198	36.00	18.60	54.60	74.00	-19.40	peak
		25.85	18.60	44.45	54.00	-9.55	average
6	17996.166	34.66	19.60	54.26	74.00	-19.74	peak
		25.10	19.60	44.70	54.00	-9.30	average

- Remark: 1. Measurement = Reading Level + Correct Factor.
 2. If Peak Result complies with AV limit, AV Result is deemed to comply with AV limit.
 3. Test setup: RBW: 1 MHz, VBW: 3 MHz, Sweep time: auto.
 4. Peak: Peak detector.
 5. AVG: VBW refer to section 6.2.
 6. For above 6.5GHz part, filter losses were only considered in the spurious frequency bands and the authorized band were not corrected for HPF losses. The proper operation of the transmitter prior to adding the filter to the measurement chain.
 7. Only the worst case emission was recorded, if it complies with the limit, the other emissions deemed to comply with the limit.