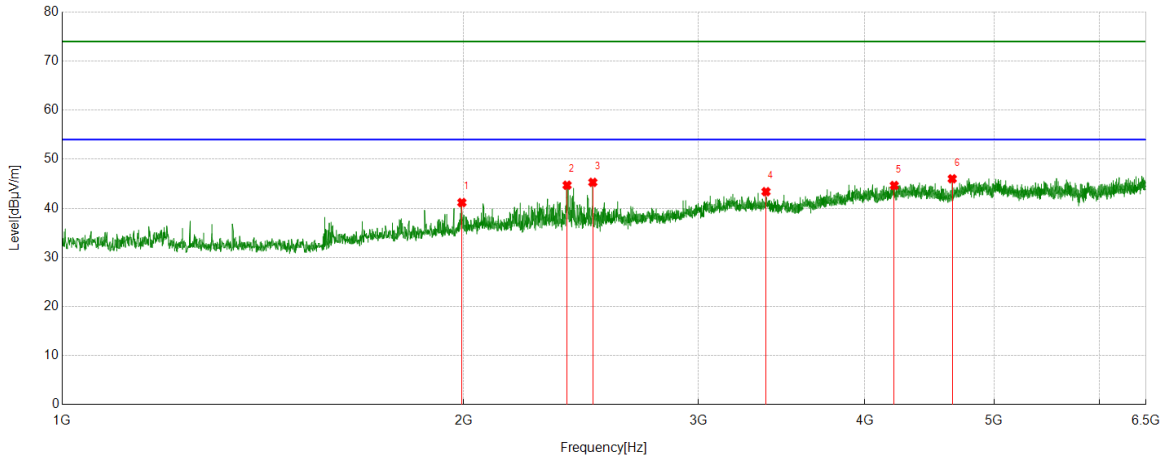




Test Mode	Channel	Polarization	Verdict
11A	5745	Vertical	PASS

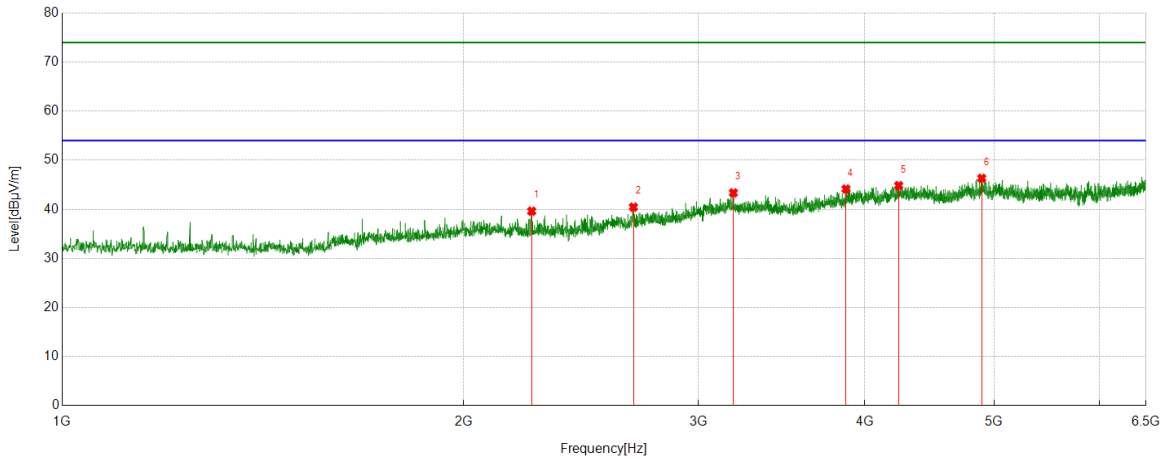


No.	Frequency	Reading Level	Correct Factor	Result	Limit	Margin	Remark
	(MHz)	(dBuV/m)	(dB)	(dBuV/m)	(dBuV/m)	(dB)	
1	1994.3883	43.66	-2.49	41.17	74.00	-32.83	peak
2	2391.6546	47.23	-2.52	44.71	74.00	-29.29	peak
3	2500.4445	47.09	-1.80	45.29	74.00	-28.71	peak
4	3371.9858	40.57	2.82	43.39	74.00	-30.61	peak
5	4208.0787	39.01	5.64	44.65	74.00	-29.35	peak
6	4651.1835	40.92	5.10	46.02	74.00	-27.98	peak

- Remark: 1. Measurement = Reading Level + Correct Factor.
 2. If Peak Result complies with AV limit, AV Result is deemed to comply with AV limit.
 3. Test setup: RBW: 1 MHz, VBW: 3 MHz, Sweep time: auto.
 4. Peak: Peak detector.
 5. AVG: VBW refer to section 6.2.
 6. For below 6.5GHz part, filter losses were only considered in the spurious frequency bands and the authorized band were not corrected for Band Reject Filter losses.
 The proper operation of the transmitter prior to adding the filter to the measurement chain.
 7. Only the worst case emission was recorded, if it complies with the limit, the other emissions deemed to comply with the limit.



Test Mode	Channel	Polarization	Verdict
11A	5785	Horizontal	PASS

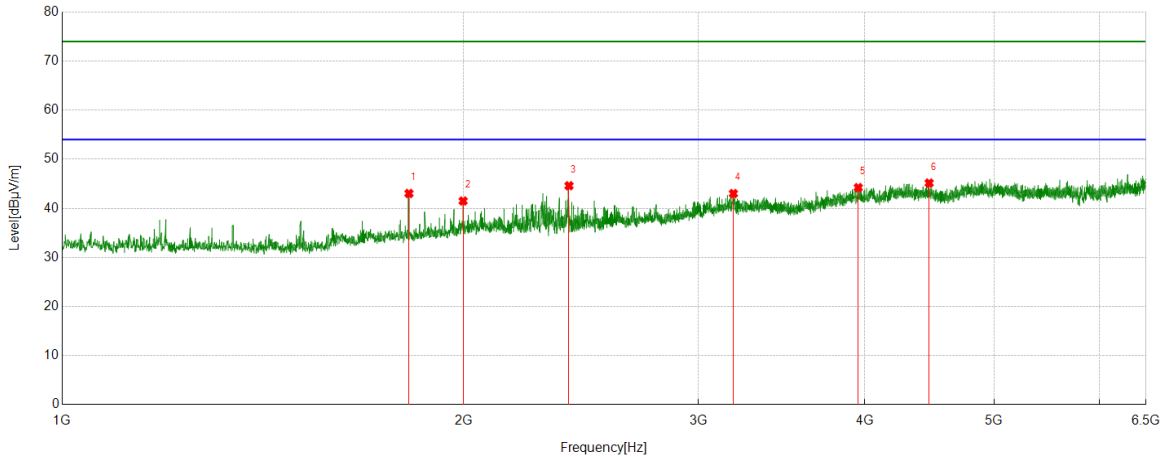


No.	Frequency	Reading Level	Correct Factor	Result	Limit	Margin	Remark
	(MHz)	(dBuV/m)	(dB)	(dBuV/m)	(dBuV/m)	(dB)	
1	2249.8611	42.18	-2.55	39.63	74.00	-34.37	peak
2	2681.9647	40.89	-0.43	40.46	74.00	-33.54	peak
3	3187.4097	40.74	2.62	43.36	74.00	-30.64	peak
4	3871.319	39.55	4.59	44.14	74.00	-29.86	peak
5	4240.4712	38.92	5.92	44.84	74.00	-29.16	peak
6	4894.4327	39.87	6.46	46.33	74.00	-27.67	peak

- Remark: 1. Measurement = Reading Level + Correct Factor.
 2. If Peak Result complies with AV limit, AV Result is deemed to comply with AV limit.
 3. Test setup: RBW: 1 MHz, VBW: 3 MHz, Sweep time: auto.
 4. Peak: Peak detector.
 5. AVG: VBW refer to section 6.2.
 6. For below 6.5GHz part, filter losses were only considered in the spurious frequency bands and the authorized band were not corrected for Band Reject Filter losses.
 The proper operation of the transmitter prior to adding the filter to the measurement chain.
 7. Only the worst case emission was recorded, if it complies with the limit, the other emissions deemed to comply with the limit.



Test Mode	Channel	Polarization	Verdict
11A	5785	Vertical	PASS

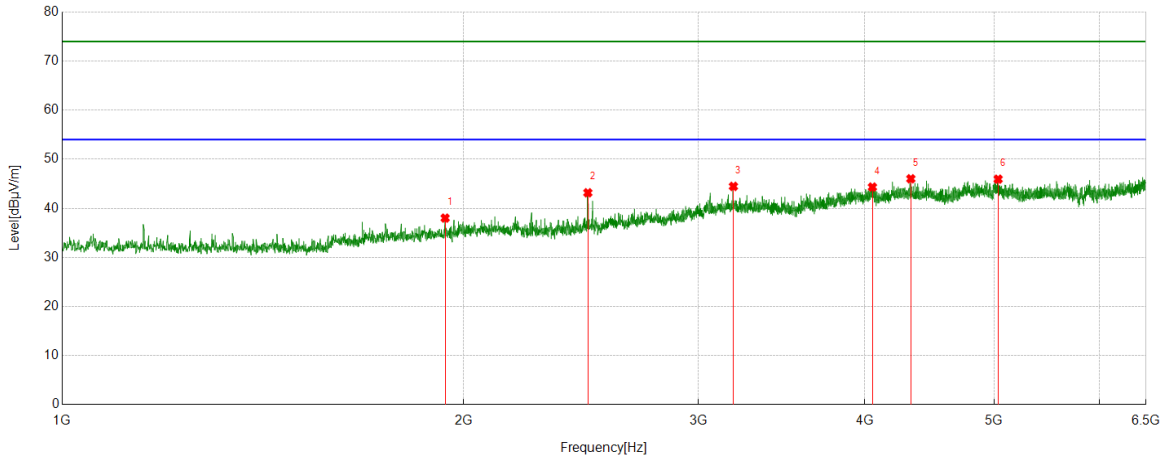


No.	Frequency	Reading Level	Correct Factor	Result	Limit	Margin	Remark
	(MHz)	(dBuV/m)	(dB)	(dBuV/m)	(dBuV/m)	(dB)	
1	1820.2022	46.78	-3.75	43.03	74.00	-30.97	peak
2	1998.6665	43.92	-2.42	41.50	74.00	-32.50	peak
3	2399.6	47.14	-2.54	44.60	74.00	-29.40	peak
4	3187.4097	40.39	2.62	43.01	74.00	-30.99	peak
5	3954.4394	39.16	5.06	44.22	74.00	-29.78	peak
6	4469.6633	39.59	5.56	45.15	74.00	-28.85	peak

- Remark: 1. Measurement = Reading Level + Correct Factor.
 2. If Peak Result complies with AV limit, AV Result is deemed to comply with AV limit.
 3. Test setup: RBW: 1 MHz, VBW: 3 MHz, Sweep time: auto.
 4. Peak: Peak detector.
 5. AVG: VBW refer to section 6.2.
 6. For below 6.5GHz part, filter losses were only considered in the spurious frequency bands and the authorized band were not corrected for Band Reject Filter losses.
 The proper operation of the transmitter prior to adding the filter to the measurement chain.
 7. Only the worst case emission was recorded, if it complies with the limit, the other emissions deemed to comply with the limit.



Test Mode	Channel	Polarization	Verdict
11A	5825	Horizontal	PASS

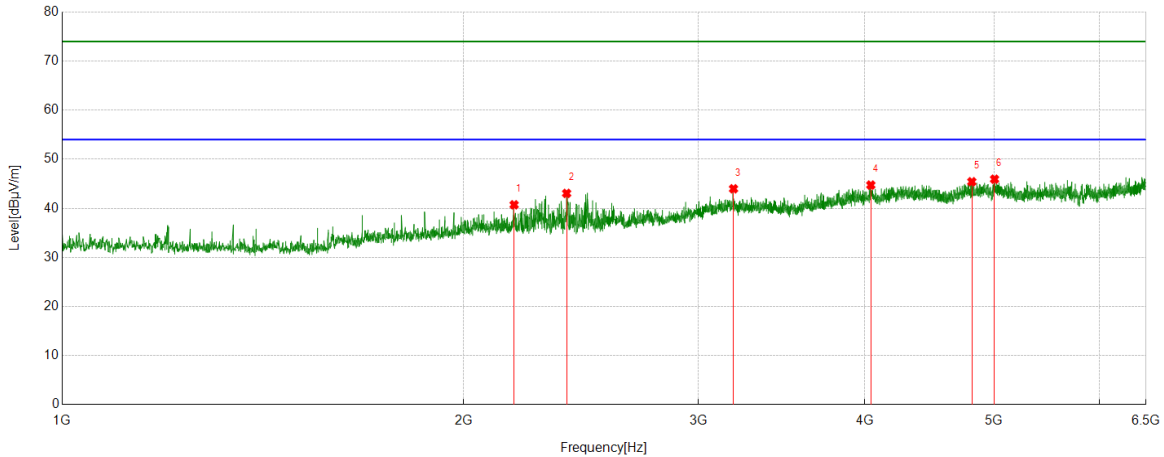


No.	Frequency	Reading Level	Correct Factor	Result	Limit	Margin	Remark
	(MHz)	(dBuV/m)	(dB)	(dBuV/m)	(dBuV/m)	(dB)	
1	1937.5486	41.17	-3.16	38.01	74.00	-35.99	peak
2	2479.0532	45.29	-2.12	43.17	74.00	-30.83	peak
3	3187.4097	41.85	2.62	44.47	74.00	-29.53	peak
4	4052.228	38.98	5.35	44.33	74.00	-29.67	peak
5	4330.3145	40.59	5.43	46.02	74.00	-27.98	peak
6	5035.0039	39.24	6.70	45.94	74.00	-28.06	peak

- Remark: 1. Measurement = Reading Level + Correct Factor.
 2. If Peak Result complies with AV limit, AV Result is deemed to comply with AV limit.
 3. Test setup: RBW: 1 MHz, VBW: 3 MHz, Sweep time: auto.
 4. Peak: Peak detector.
 5. AVG: VBW refer to section 6.2.
 6. For below 6.5GHz part, filter losses were only considered in the spurious frequency bands and the authorized band were not corrected for Band Reject Filter losses.
 The proper operation of the transmitter prior to adding the filter to the measurement chain.
 7. Only the worst case emission was recorded, if it complies with the limit, the other emissions deemed to comply with the limit.



Test Mode	Channel	Polarization	Verdict
11A	5825	Vertical	PASS

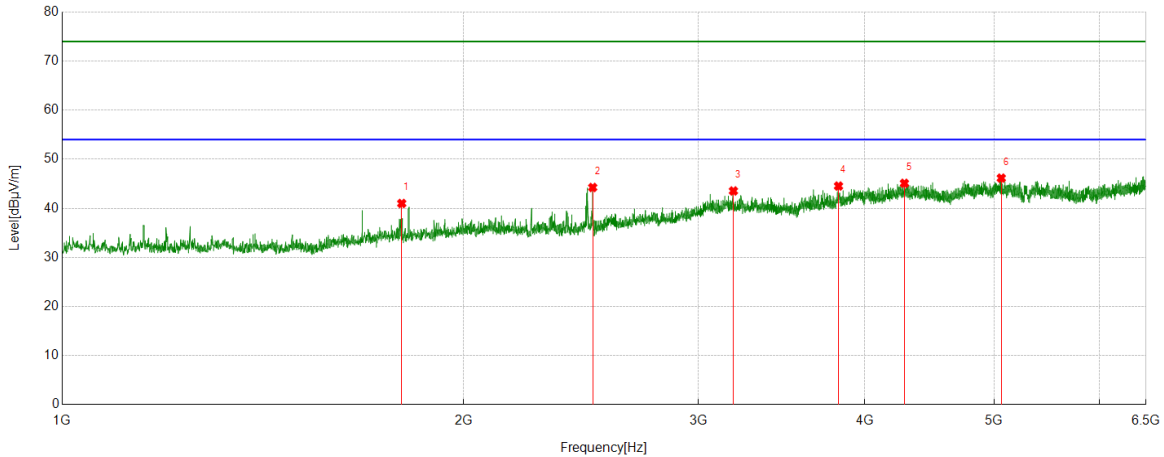


No.	Frequency	Reading Level	Correct Factor	Result	Limit	Margin	Remark
	(MHz)	(dBuV/m)	(dB)	(dBuV/m)	(dBuV/m)	(dB)	
1	2182.6314	43.00	-2.28	40.72	74.00	-33.28	peak
2	2389.8211	45.57	-2.52	43.05	74.00	-30.95	peak
3	3188.0209	41.36	2.62	43.98	74.00	-30.02	peak
4	4041.2268	39.67	5.07	44.74	74.00	-29.26	peak
5	4811.3124	39.14	6.28	45.42	74.00	-28.58	peak
6	5003.8338	39.09	6.85	45.94	74.00	-28.06	peak

- Remark: 1. Measurement = Reading Level + Correct Factor.
 2. If Peak Result complies with AV limit, AV Result is deemed to comply with AV limit.
 3. Test setup: RBW: 1 MHz, VBW: 3 MHz, Sweep time: auto.
 4. Peak: Peak detector.
 5. AVG: VBW refer to section 6.2.
 6. For below 6.5GHz part, filter losses were only considered in the spurious frequency bands and the authorized band were not corrected for Band Reject Filter losses.
 The proper operation of the transmitter prior to adding the filter to the measurement chain.
 7. Only the worst case emission was recorded, if it complies with the limit, the other emissions deemed to comply with the limit.



Test Mode	Channel	Polarization	Verdict
11AC20	5180	Horizontal	PASS

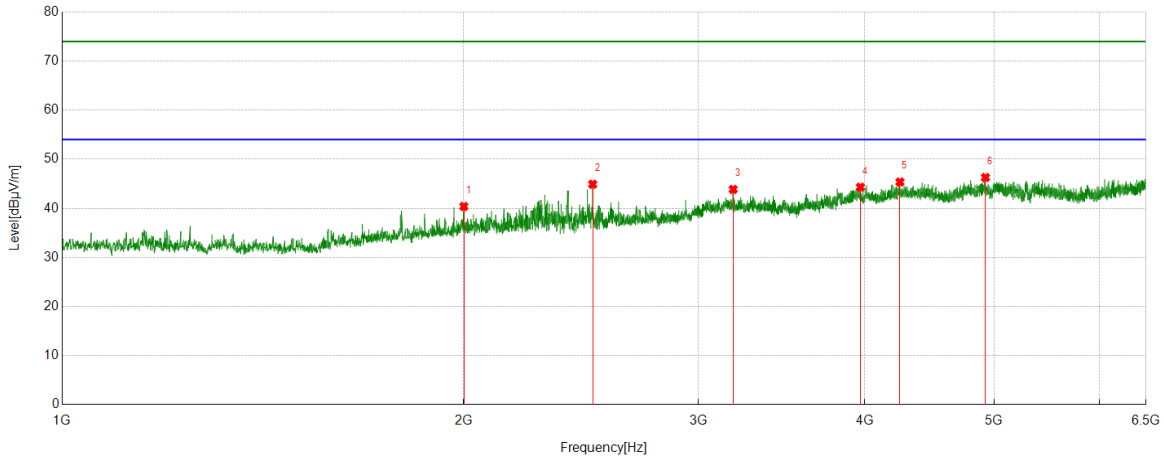


No.	Frequency	Reading Level	Correct Factor	Result	Limit	Margin	Remark
	(MHz)	(dBuV/m)	(dB)	(dBuV/m)	(dBuV/m)	(dB)	
1	1797.5886	44.66	-3.67	40.99	74.00	-33.01	peak
2	2499.8333	45.89	-1.64	44.25	74.00	-29.75	peak
3	3187.4097	40.79	2.75	43.54	74.00	-30.46	peak
4	3821.8135	39.66	4.88	44.54	74.00	-29.46	peak
5	4282.6425	38.98	6.12	45.10	74.00	-28.90	peak
6	5062.5069	38.99	7.17	46.16	74.00	-27.84	peak

- Remark: 1. Measurement = Reading Level + Correct Factor.
 2. If Peak Result complies with AV limit, AV Result is deemed to comply with AV limit.
 3. Test setup: RBW: 1 MHz, VBW: 3 MHz, Sweep time: auto.
 4. Peak: Peak detector.
 5. AVG: VBW refer to section 6.2.
 6. For below 6.5GHz part, filter losses were only considered in the spurious frequency bands and the authorized band were not corrected for Band Reject Filter losses.
 The proper operation of the transmitter prior to adding the filter to the measurement chain.
 7. Only the worst case emission was recorded, if it complies with the limit, the other emissions deemed to comply with the limit.



Test Mode	Channel	Polarization	Verdict
11AC20	5180	Vertical	PASS

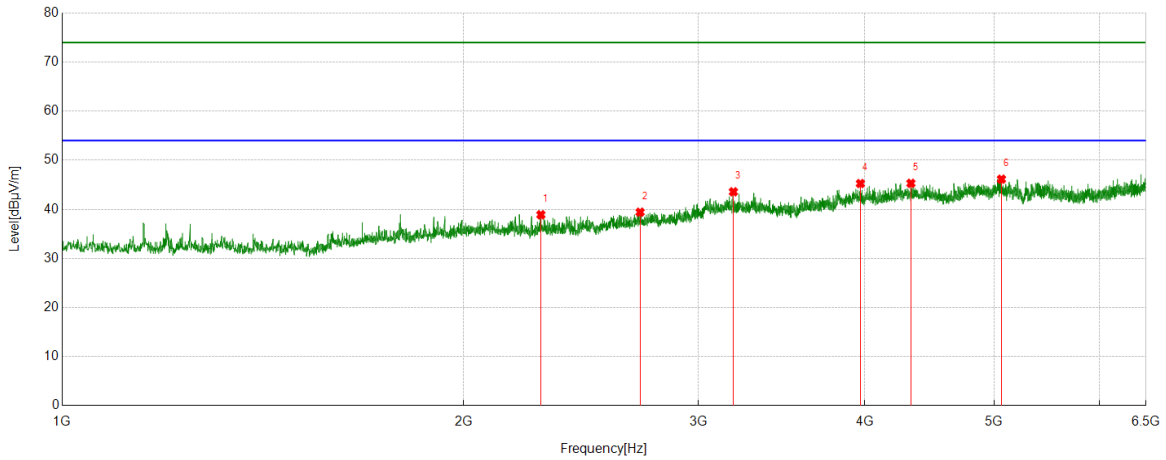


No.	Frequency	Reading Level	Correct Factor	Result	Limit	Margin	Remark
	(MHz)	(dBuV/m)	(dB)	(dBuV/m)	(dBuV/m)	(dB)	
1	2001.1112	42.65	-2.26	40.39	74.00	-33.61	peak
2	2499.8333	46.55	-1.64	44.91	74.00	-29.09	peak
3	3186.1874	41.12	2.74	43.86	74.00	-30.14	peak
4	3969.1077	39.11	5.20	44.31	74.00	-29.69	peak
5	4249.6388	39.01	6.35	45.36	74.00	-28.64	peak
6	4925.6028	39.30	6.98	46.28	74.00	-27.72	peak

- Remark: 1. Measurement = Reading Level + Correct Factor.
 2. If Peak Result complies with AV limit, AV Result is deemed to comply with AV limit.
 3. Test setup: RBW: 1 MHz, VBW: 3 MHz, Sweep time: auto.
 4. Peak: Peak detector.
 5. AVG: VBW refer to section 6.2.
 6. For below 6.5GHz part, filter losses were only considered in the spurious frequency bands and the authorized band were not corrected for Band Reject Filter losses.
 The proper operation of the transmitter prior to adding the filter to the measurement chain.
 7. Only the worst case emission was recorded, if it complies with the limit, the other emissions deemed to comply with the limit.



Test Mode	Channel	Polarization	Verdict
11AC20	5200	Horizontal	PASS

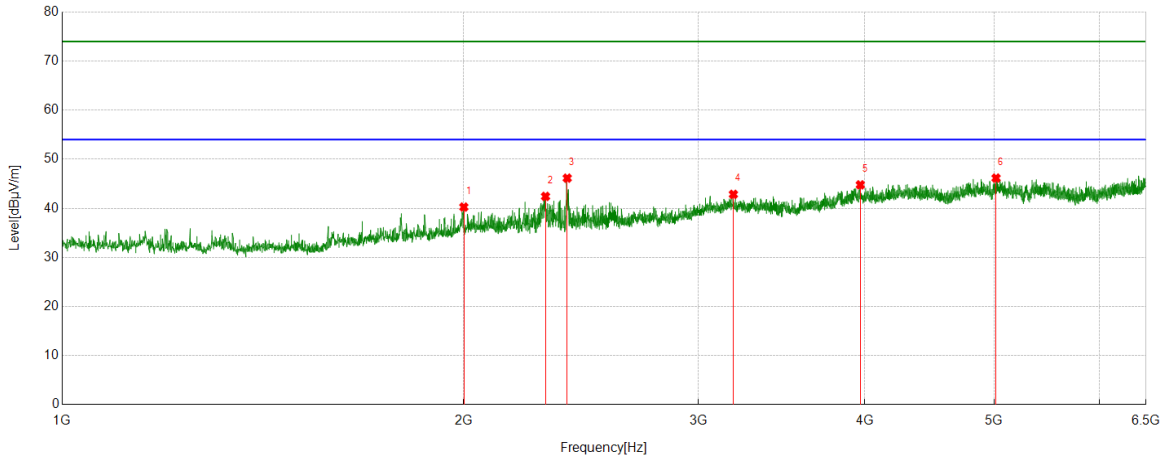


No.	Frequency	Reading Level	Correct Factor	Result	Limit	Margin	Remark
	(MHz)	(dBuV/m)	(dB)	(dBuV/m)	(dBuV/m)	(dB)	
1	2285.9207	41.18	-2.29	38.89	74.00	-35.11	peak
2	2713.1348	39.30	0.12	39.42	74.00	-34.58	peak
3	3187.4097	40.82	2.75	43.57	74.00	-30.43	peak
4	3969.1077	40.06	5.20	45.26	74.00	-28.74	peak
5	4330.9257	39.61	5.69	45.30	74.00	-28.70	peak
6	5063.7293	38.97	7.17	46.14	74.00	-27.86	peak

- Remark: 1. Measurement = Reading Level + Correct Factor.
 2. If Peak Result complies with AV limit, AV Result is deemed to comply with AV limit.
 3. Test setup: RBW: 1 MHz, VBW: 3 MHz, Sweep time: auto.
 4. Peak: Peak detector.
 5. AVG: VBW refer to section 6.2.
 6. For below 6.5GHz part, filter losses were only considered in the spurious frequency bands and the authorized band were not corrected for Band Reject Filter losses.
 The proper operation of the transmitter prior to adding the filter to the measurement chain.
 7. Only the worst case emission was recorded, if it complies with the limit, the other emissions deemed to comply with the limit.



Test Mode	Channel	Polarization	Verdict
11AC20	5200	Vertical	PASS

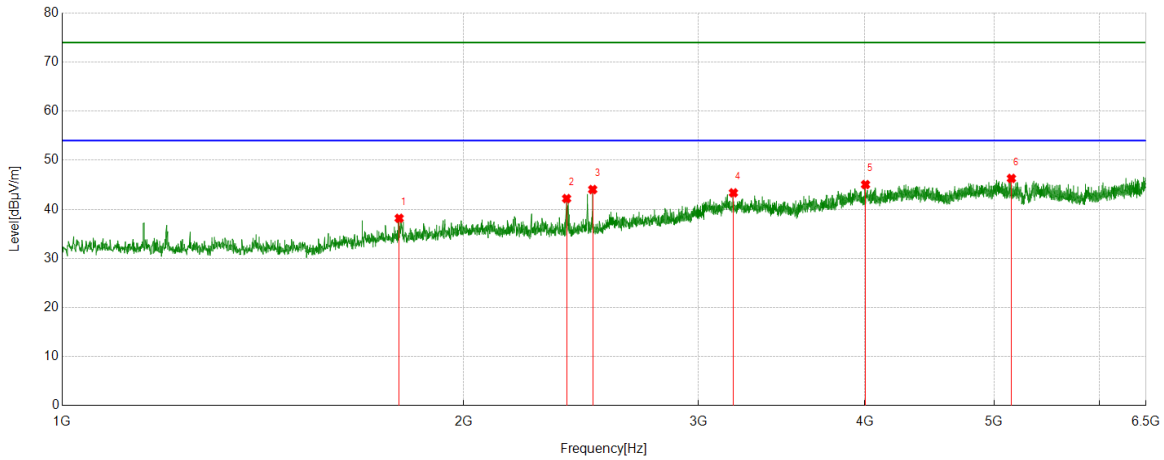


No.	Frequency	Reading Level	Correct Factor	Result	Limit	Margin	Remark
	(MHz)	(dBuV/m)	(dB)	(dBuV/m)	(dBuV/m)	(dB)	
1	2001.1112	42.52	-2.26	40.26	74.00	-33.74	peak
2	2304.256	44.48	-2.05	42.43	74.00	-31.57	peak
3	2392.2658	48.54	-2.39	46.15	74.00	-27.85	peak
4	3187.4097	40.10	2.75	42.85	74.00	-31.15	peak
5	3968.4965	39.58	5.20	44.78	74.00	-29.22	peak
6	5016.6685	38.98	7.18	46.16	74.00	-27.84	peak

- Remark: 1. Measurement = Reading Level + Correct Factor.
 2. If Peak Result complies with AV limit, AV Result is deemed to comply with AV limit.
 3. Test setup: RBW: 1 MHz, VBW: 3 MHz, Sweep time: auto.
 4. Peak: Peak detector.
 5. AVG: VBW refer to section 6.2.
 6. For below 6.5GHz part, filter losses were only considered in the spurious frequency bands and the authorized band were not corrected for Band Reject Filter losses.
 The proper operation of the transmitter prior to adding the filter to the measurement chain.
 7. Only the worst case emission was recorded, if it complies with the limit, the other emissions deemed to comply with the limit.



Test Mode	Channel	Polarization	Verdict
11AC20	5240	Horizontal	PASS

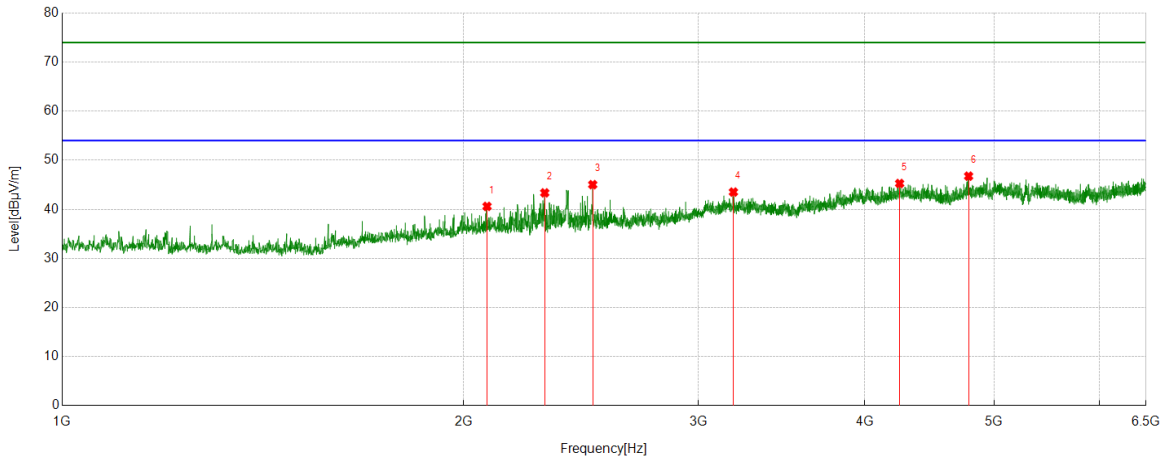


No.	Frequency	Reading Level	Correct Factor	Result	Limit	Margin	Remark
	(MHz)	(dBuV/m)	(dB)	(dBuV/m)	(dBuV/m)	(dB)	
1	1789.6433	42.01	-3.84	38.17	74.00	-35.83	peak
2	2389.8211	44.54	-2.35	42.19	74.00	-31.81	peak
3	2499.8333	45.67	-1.64	44.03	74.00	-29.97	peak
4	3187.4097	40.61	2.75	43.36	74.00	-30.64	peak
5	4004.5561	40.01	5.03	45.04	74.00	-28.96	peak
6	5151.7391	39.42	6.87	46.29	74.00	-27.71	peak

- Remark: 1. Measurement = Reading Level + Correct Factor.
 2. If Peak Result complies with AV limit, AV Result is deemed to comply with AV limit.
 3. Test setup: RBW: 1 MHz, VBW: 3 MHz, Sweep time: auto.
 4. Peak: Peak detector.
 5. AVG: VBW refer to section 6.2.
 6. For below 6.5GHz part, filter losses were only considered in the spurious frequency bands and the authorized band were not corrected for Band Reject Filter losses.
 The proper operation of the transmitter prior to adding the filter to the measurement chain.
 7. Only the worst case emission was recorded, if it complies with the limit, the other emissions deemed to comply with the limit.



Test Mode	Channel	Polarization	Verdict
11AC20	5240	Vertical	PASS

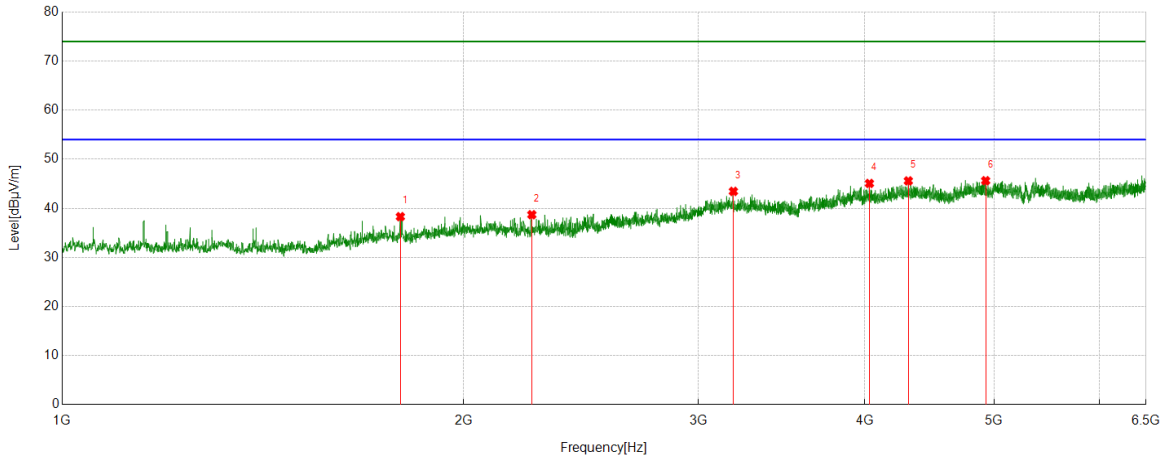


No.	Frequency	Reading Level	Correct Factor	Result	Limit	Margin	Remark
	(MHz)	(dBuV/m)	(dB)	(dBuV/m)	(dBuV/m)	(dB)	
1	2083.0092	42.61	-2.01	40.60	74.00	-33.40	peak
2	2301.2001	45.45	-2.09	43.36	74.00	-30.64	peak
3	2499.8333	46.67	-1.64	45.03	74.00	-28.97	peak
4	3187.4097	40.77	2.75	43.52	74.00	-30.48	peak
5	4247.1941	38.92	6.35	45.27	74.00	-28.73	peak
6	4784.4205	40.09	6.67	46.76	74.00	-27.24	peak

- Remark: 1. Measurement = Reading Level + Correct Factor.
 2. If Peak Result complies with AV limit, AV Result is deemed to comply with AV limit.
 3. Test setup: RBW: 1 MHz, VBW: 3 MHz, Sweep time: auto.
 4. Peak: Peak detector.
 5. AVG: VBW refer to section 6.2.
 6. For below 6.5GHz part, filter losses were only considered in the spurious frequency bands and the authorized band were not corrected for Band Reject Filter losses.
 The proper operation of the transmitter prior to adding the filter to the measurement chain.
 7. Only the worst case emission was recorded, if it complies with the limit, the other emissions deemed to comply with the limit.



Test Mode	Channel	Polarization	Verdict
11AC20	5260	Horizontal	PASS

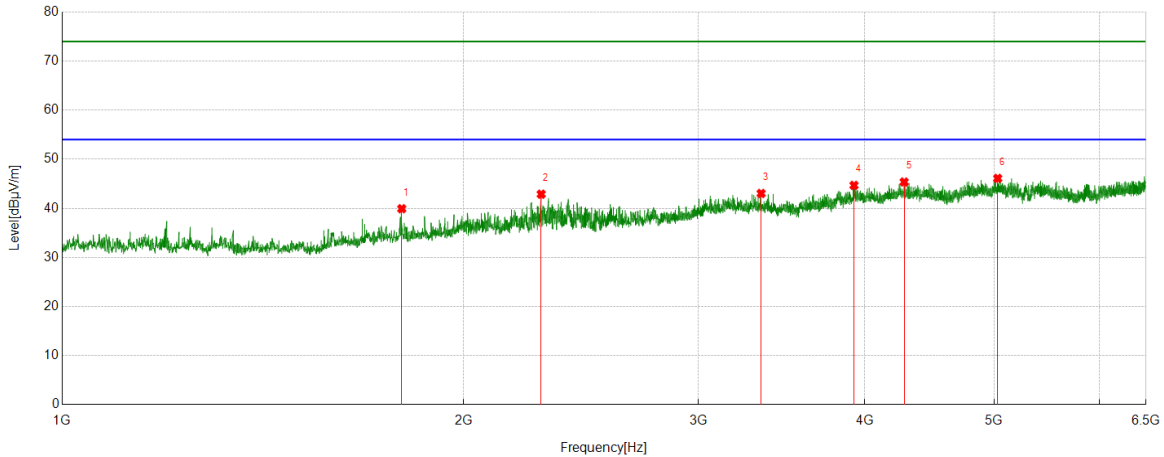


No.	Frequency	Reading Level	Correct Factor	Result	Limit	Margin	Remark
	(MHz)	(dBuV/m)	(dB)	(dBuV/m)	(dBuV/m)	(dB)	
1	1793.3104	42.07	-3.77	38.30	74.00	-35.70	peak
2	2250.4723	40.95	-2.25	38.70	74.00	-35.30	peak
3	3187.4097	40.70	2.75	43.45	74.00	-30.55	peak
4	4031.4479	39.86	5.21	45.07	74.00	-28.93	peak
5	4311.3679	39.83	5.76	45.59	74.00	-28.41	peak
6	4927.4364	38.65	6.98	45.63	74.00	-28.37	peak

- Remark: 1. Measurement = Reading Level + Correct Factor.
 2. If Peak Result complies with AV limit, AV Result is deemed to comply with AV limit.
 3. Test setup: RBW: 1 MHz, VBW: 3 MHz, Sweep time: auto.
 4. Peak: Peak detector.
 5. AVG: VBW refer to section 6.2.
 6. For below 6.5GHz part, filter losses were only considered in the spurious frequency bands and the authorized band were not corrected for Band Reject Filter losses.
 The proper operation of the transmitter prior to adding the filter to the measurement chain.
 7. Only the worst case emission was recorded, if it complies with the limit, the other emissions deemed to comply with the limit.



Test Mode	Channel	Polarization	Verdict
11AC20	5260	Vertical	PASS

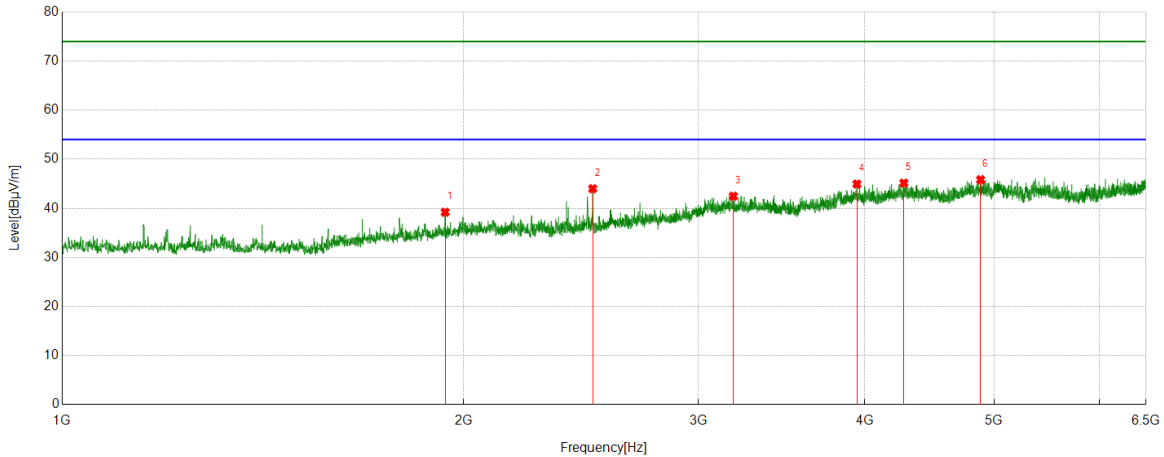


No.	Frequency	Reading Level	Correct Factor	Result	Limit	Margin	Remark
	(MHz)	(dBuV/m)	(dB)	(dBuV/m)	(dBuV/m)	(dB)	
1	1797.5886	43.59	-3.67	39.92	74.00	-34.08	peak
2	2287.143	45.16	-2.28	42.88	74.00	-31.12	peak
3	3343.8715	40.23	2.80	43.03	74.00	-30.97	peak
4	3925.714	39.26	5.42	44.68	74.00	-29.32	peak
5	4280.809	39.25	6.11	45.36	74.00	-28.64	peak
6	5031.3368	38.94	7.16	46.10	74.00	-27.90	peak

- Remark: 1. Measurement = Reading Level + Correct Factor.
 2. If Peak Result complies with AV limit, AV Result is deemed to comply with AV limit.
 3. Test setup: RBW: 1 MHz, VBW: 3 MHz, Sweep time: auto.
 4. Peak: Peak detector.
 5. AVG: VBW refer to section 6.2.
 6. For below 6.5GHz part, filter losses were only considered in the spurious frequency bands and the authorized band were not corrected for Band Reject Filter losses.
 The proper operation of the transmitter prior to adding the filter to the measurement chain.
 7. Only the worst case emission was recorded, if it complies with the limit, the other emissions deemed to comply with the limit.



Test Mode	Channel	Polarization	Verdict
11AC20	5280	Horizontal	PASS

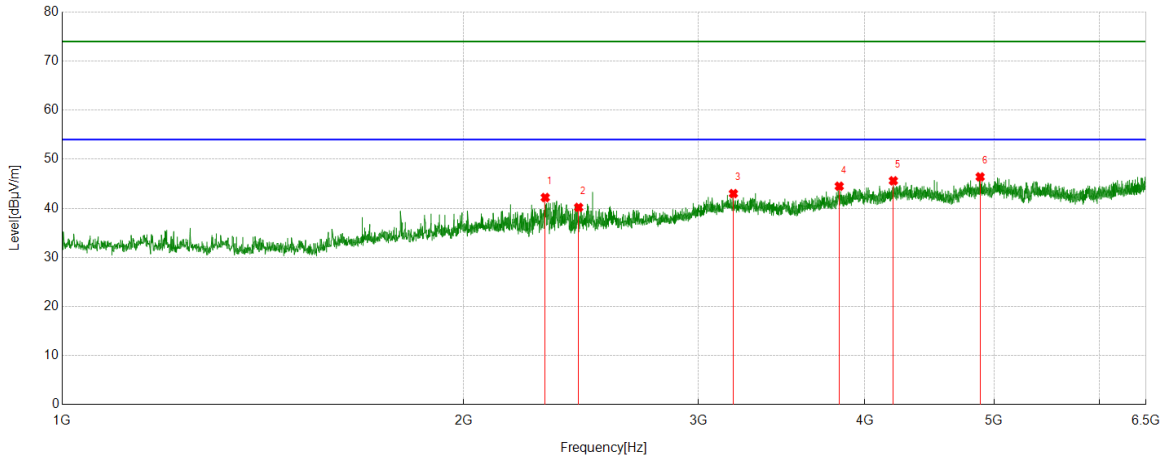


No.	Frequency	Reading Level	Correct Factor	Result	Limit	Margin	Remark
	(MHz)	(dBuV/m)	(dB)	(dBuV/m)	(dBuV/m)	(dB)	
1	1937.5486	42.11	-2.91	39.20	74.00	-34.80	peak
2	2499.8333	45.64	-1.64	44.00	74.00	-30.00	peak
3	3187.4097	39.72	2.75	42.47	74.00	-31.53	peak
4	3945.2717	39.58	5.37	44.95	74.00	-29.05	peak
5	4278.3643	39.03	6.11	45.14	74.00	-28.86	peak
6	4884.6538	38.90	6.93	45.83	74.00	-28.17	peak

- Remark: 1. Measurement = Reading Level + Correct Factor.
 2. If Peak Result complies with AV limit, AV Result is deemed to comply with AV limit.
 3. Test setup: RBW: 1 MHz, VBW: 3 MHz, Sweep time: auto.
 4. Peak: Peak detector.
 5. AVG: VBW refer to section 6.2.
 6. For below 6.5GHz part, filter losses were only considered in the spurious frequency bands and the authorized band were not corrected for Band Reject Filter losses.
 The proper operation of the transmitter prior to adding the filter to the measurement chain.
 7. Only the worst case emission was recorded, if it complies with the limit, the other emissions deemed to comply with the limit.



Test Mode	Channel	Polarization	Verdict
11AC20	5280	Vertical	PASS

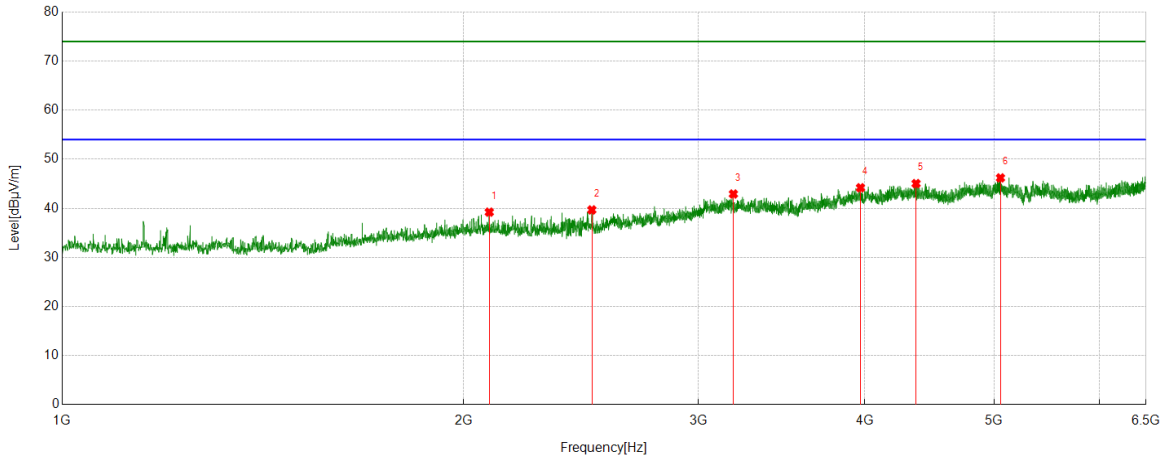


No.	Frequency	Reading Level	Correct Factor	Result	Limit	Margin	Remark
	(MHz)	(dBuV/m)	(dB)	(dBuV/m)	(dBuV/m)	(dB)	
1	2303.0337	44.27	-2.07	42.20	74.00	-31.80	peak
2	2439.9378	42.32	-2.13	40.19	74.00	-33.81	peak
3	3187.4097	40.25	2.75	43.00	74.00	-31.00	peak
4	3826.703	39.51	4.99	44.50	74.00	-29.50	peak
5	4201.3557	39.76	5.85	45.61	74.00	-28.39	peak
6	4880.9868	39.48	6.93	46.41	74.00	-27.59	peak

- Remark: 1. Measurement = Reading Level + Correct Factor.
 2. If Peak Result complies with AV limit, AV Result is deemed to comply with AV limit.
 3. Test setup: RBW: 1 MHz, VBW: 3 MHz, Sweep time: auto.
 4. Peak: Peak detector.
 5. AVG: VBW refer to section 6.2.
 6. For below 6.5GHz part, filter losses were only considered in the spurious frequency bands and the authorized band were not corrected for Band Reject Filter losses.
 The proper operation of the transmitter prior to adding the filter to the measurement chain.
 7. Only the worst case emission was recorded, if it complies with the limit, the other emissions deemed to comply with the limit.



Test Mode	Channel	Polarization	Verdict
11AC20	5320	Horizontal	PASS

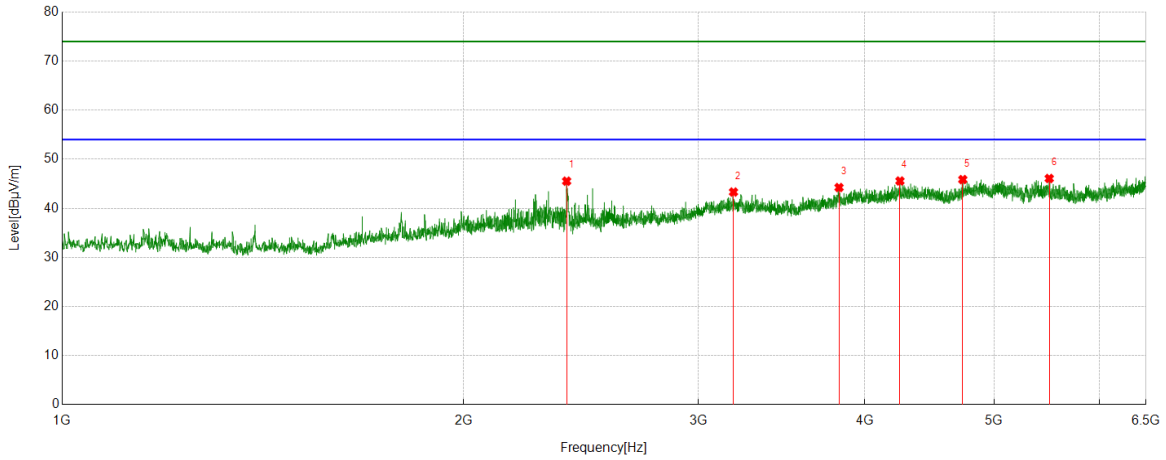


No.	Frequency	Reading Level	Correct Factor	Result	Limit	Margin	Remark
	(MHz)	(dBuV/m)	(dB)	(dBuV/m)	(dBuV/m)	(dB)	
1	2090.9546	41.12	-1.90	39.22	74.00	-34.78	peak
2	2496.1662	41.38	-1.70	39.68	74.00	-34.32	peak
3	3187.4097	40.17	2.75	42.92	74.00	-31.08	peak
4	3969.7189	38.99	5.20	44.19	74.00	-29.81	peak
5	4369.4299	39.14	5.90	45.04	74.00	-28.96	peak
6	5055.1728	39.02	7.18	46.20	74.00	-27.80	peak

- Remark: 1. Measurement = Reading Level + Correct Factor.
 2. If Peak Result complies with AV limit, AV Result is deemed to comply with AV limit.
 3. Test setup: RBW: 1 MHz, VBW: 3 MHz, Sweep time: auto.
 4. Peak: Peak detector.
 5. AVG: VBW refer to section 6.2.
 6. For below 6.5GHz part, filter losses were only considered in the spurious frequency bands and the authorized band were not corrected for Band Reject Filter losses.
 The proper operation of the transmitter prior to adding the filter to the measurement chain.
 7. Only the worst case emission was recorded, if it complies with the limit, the other emissions deemed to comply with the limit.



Test Mode	Channel	Polarization	Verdict
11AC20	5320	Vertical	PASS

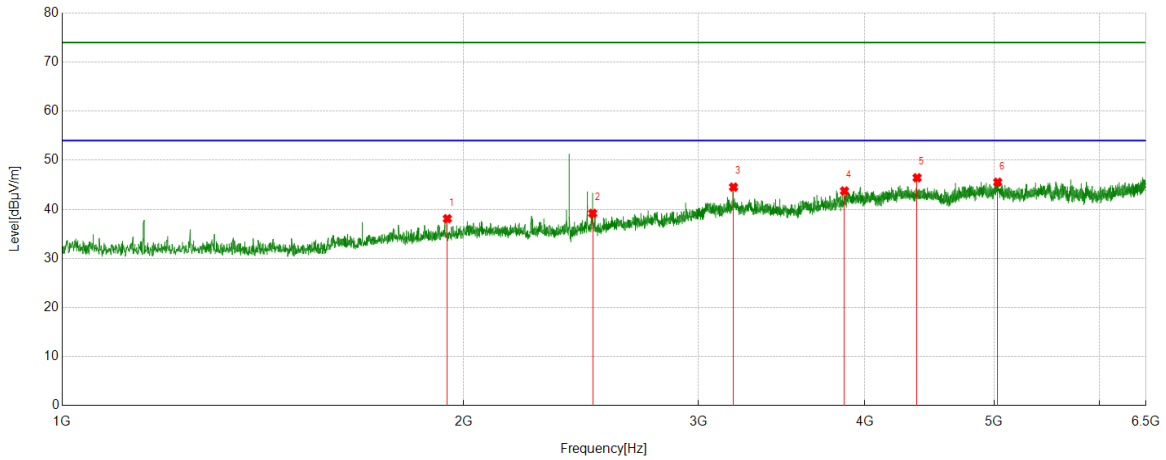


No.	Frequency	Reading Level	Correct Factor	Result	Limit	Margin	Remark
	(MHz)	(dBuV/m)	(dB)	(dBuV/m)	(dBuV/m)	(dB)	
1	2389.8211	47.88	-2.35	45.53	74.00	-28.47	peak
2	3188.0209	40.57	2.75	43.32	74.00	-30.68	peak
3	3825.4806	39.28	4.96	44.24	74.00	-29.76	peak
4	4249.6388	39.22	6.35	45.57	74.00	-28.43	peak
5	4736.7485	39.62	6.24	45.86	74.00	-28.14	peak
6	5499.4999	39.03	7.05	46.08	74.00	-27.92	peak

- Remark: 1. Measurement = Reading Level + Correct Factor.
 2. If Peak Result complies with AV limit, AV Result is deemed to comply with AV limit.
 3. Test setup: RBW: 1 MHz, VBW: 3 MHz, Sweep time: auto.
 4. Peak: Peak detector.
 5. AVG: VBW refer to section 6.2.
 6. For below 6.5GHz part, filter losses were only considered in the spurious frequency bands and the authorized band were not corrected for Band Reject Filter losses.
 The proper operation of the transmitter prior to adding the filter to the measurement chain.
 7. Only the worst case emission was recorded, if it complies with the limit, the other emissions deemed to comply with the limit.



Test Mode	Channel	Polarization	Verdict
11AC20	5500	Horizontal	PASS

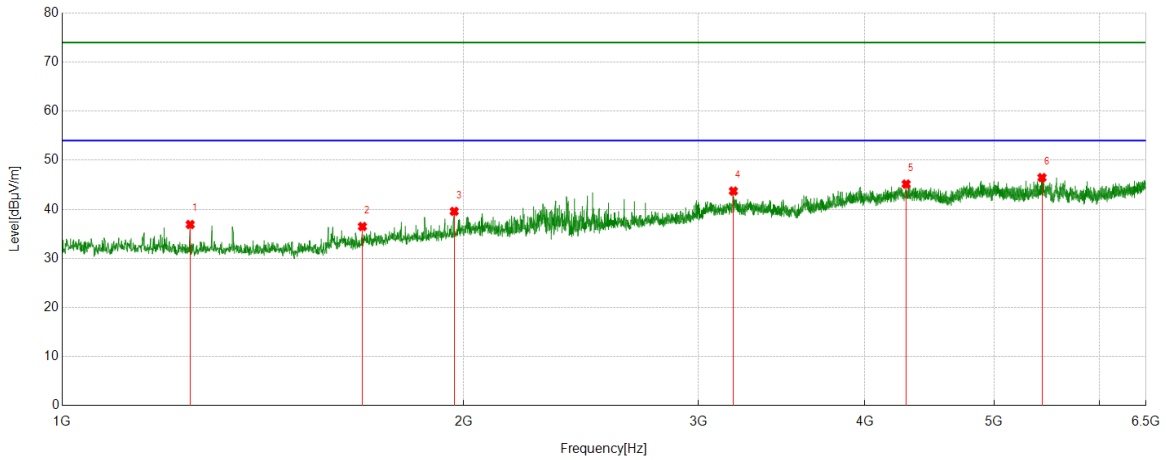


No.	Frequency	Reading Level	Correct Factor	Result	Limit	Margin	Remark
	(MHz)	(dBuV/m)	(dB)	(dBuV/m)	(dBuV/m)	(dB)	
1	1944.8828	41.15	-3.06	38.09	74.00	-35.91	peak
2	2499.8333	40.75	-1.57	39.18	74.00	-34.82	peak
3	3188.0209	41.40	3.13	44.53	74.00	-29.47	peak
4	3861.5402	38.87	4.87	43.74	74.00	-30.26	peak
5	4377.3753	40.57	5.86	46.43	74.00	-27.57	peak
6	5031.3368	38.39	7.13	45.52	74.00	-28.48	peak

- Remark: 1. Measurement = Reading Level + Correct Factor.
 2. If Peak Result complies with AV limit, AV Result is deemed to comply with AV limit.
 3. Test setup: RBW: 1 MHz, VBW: 3 MHz, Sweep time: auto.
 4. Peak: Peak detector.
 5. AVG: VBW refer to section 6.2.
 6. For below 6.5GHz part, filter losses were only considered in the spurious frequency bands and the authorized band were not corrected for Band Reject Filter losses.
 The proper operation of the transmitter prior to adding the filter to the measurement chain.
 7. Only the worst case emission was recorded, if it complies with the limit, the other emissions deemed to comply with the limit.



Test Mode	Channel	Polarization	Verdict
11AC20	5500	Vertical	PASS

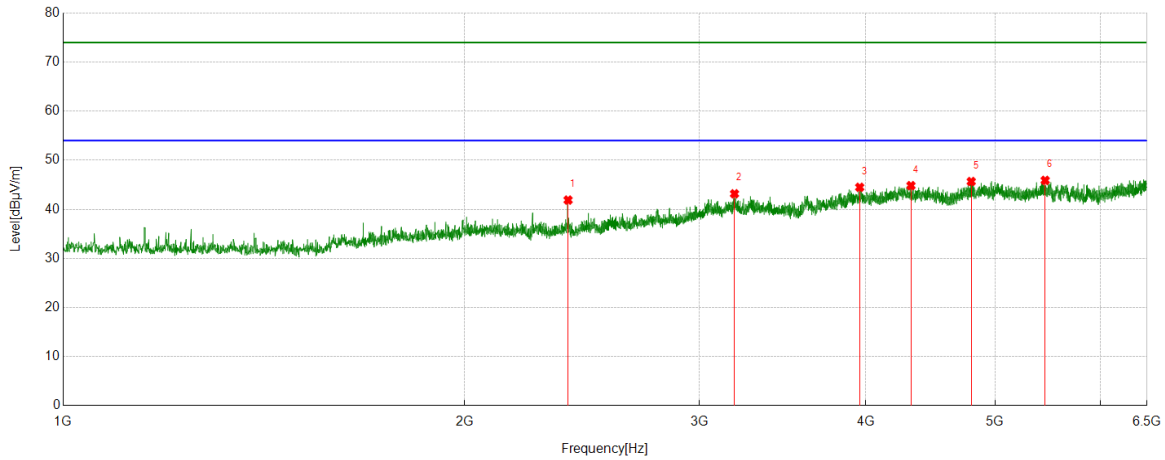


No.	Frequency	Reading Level	Correct Factor	Result	Limit	Margin	Remark
	(MHz)	(dBuV/m)	(dB)	(dBuV/m)	(dBuV/m)	(dB)	
1	1247.5275	42.62	-5.71	36.91	74.00	-37.09	peak
2	1679.6311	40.86	-4.36	36.50	74.00	-37.50	peak
3	1968.1076	42.33	-2.74	39.59	74.00	-34.41	peak
4	3187.4097	40.60	3.12	43.72	74.00	-30.28	peak
5	4295.4773	39.13	6.02	45.15	74.00	-28.85	peak
6	5431.0479	38.85	7.61	46.46	74.00	-27.54	peak

- Remark: 1. Measurement = Reading Level + Correct Factor.
 2. If Peak Result complies with AV limit, AV Result is deemed to comply with AV limit.
 3. Test setup: RBW: 1 MHz, VBW: 3 MHz, Sweep time: auto.
 4. Peak: Peak detector.
 5. AVG: VBW refer to section 6.2.
 6. For below 6.5GHz part, filter losses were only considered in the spurious frequency bands and the authorized band were not corrected for Band Reject Filter losses.
 The proper operation of the transmitter prior to adding the filter to the measurement chain.
 7. Only the worst case emission was recorded, if it complies with the limit, the other emissions deemed to comply with the limit.



Test Mode	Channel	Polarization	Verdict
11AC20	5580	Horizontal	PASS

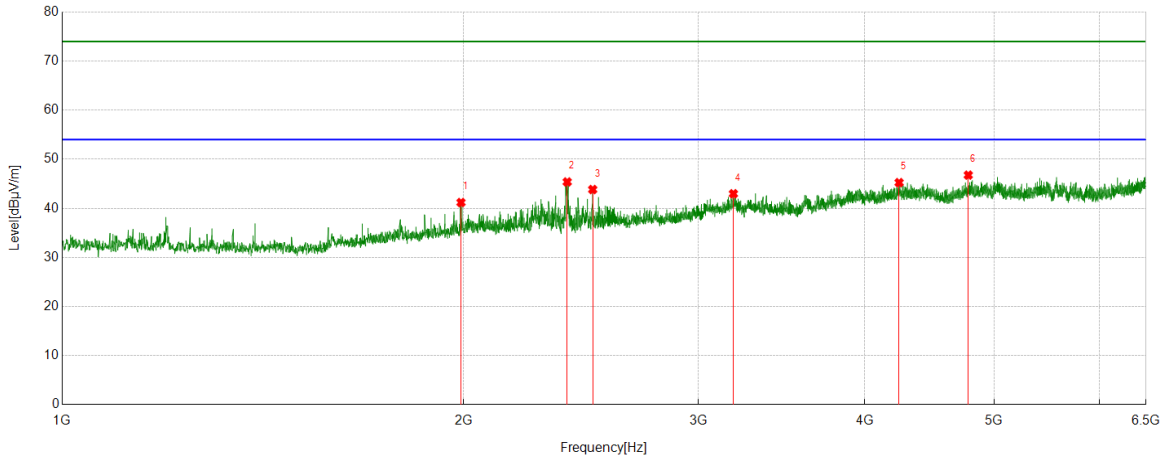


No.	Frequency	Reading Level	Correct Factor	Result	Limit	Margin	Remark
	(MHz)	(dBuV/m)	(dB)	(dBuV/m)	(dBuV/m)	(dB)	
1	2391.6546	44.34	-2.45	41.89	74.00	-32.11	peak
2	3188.0209	40.04	3.13	43.17	74.00	-30.83	peak
3	3957.4953	39.22	5.27	44.49	74.00	-29.51	peak
4	4323.5915	39.13	5.70	44.83	74.00	-29.17	peak
5	4797.8664	38.84	6.83	45.67	74.00	-28.33	peak
6	5451.828	38.31	7.59	45.90	74.00	-28.10	peak

- Remark: 1. Measurement = Reading Level + Correct Factor.
 2. If Peak Result complies with AV limit, AV Result is deemed to comply with AV limit.
 3. Test setup: RBW: 1 MHz, VBW: 3 MHz, Sweep time: auto.
 4. Peak: Peak detector.
 5. AVG: VBW refer to section 6.2.
 6. For below 6.5GHz part, filter losses were only considered in the spurious frequency bands and the authorized band were not corrected for Band Reject Filter losses.
 The proper operation of the transmitter prior to adding the filter to the measurement chain.
 7. Only the worst case emission was recorded, if it complies with the limit, the other emissions deemed to comply with the limit.



Test Mode	Channel	Polarization	Verdict
11AC20	5580	Vertical	PASS

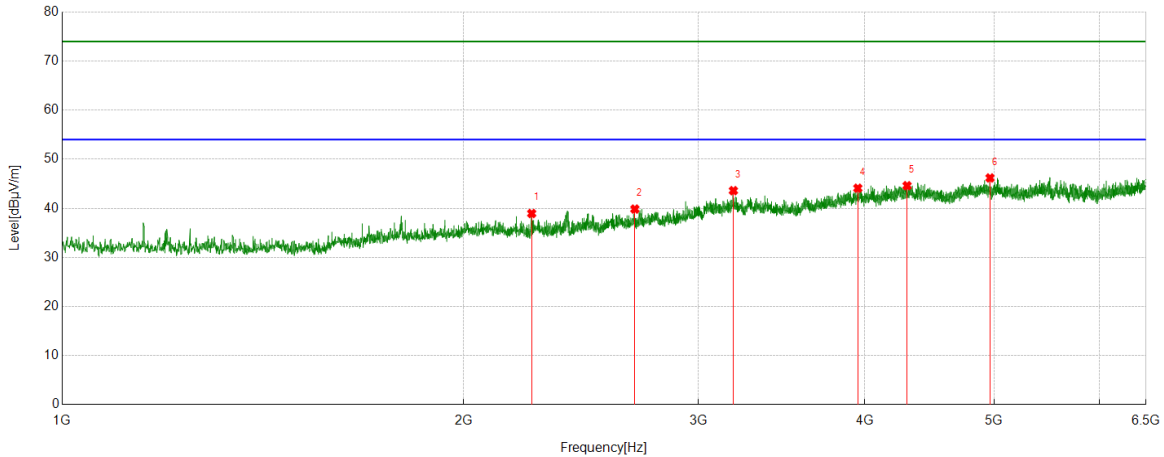


No.	Frequency	Reading Level	Correct Factor	Result	Limit	Margin	Remark
	(MHz)	(dBuV/m)	(dB)	(dBuV/m)	(dBuV/m)	(dB)	
1	1991.3324	43.59	-2.40	41.19	74.00	-32.81	peak
2	2392.2658	47.84	-2.46	45.38	74.00	-28.62	peak
3	2499.8333	45.40	-1.57	43.83	74.00	-30.17	peak
4	3187.4097	39.85	3.12	42.97	74.00	-31.03	peak
5	4243.5271	38.78	6.46	45.24	74.00	-28.76	peak
6	4781.9758	40.33	6.44	46.77	74.00	-27.23	peak

- Remark: 1. Measurement = Reading Level + Correct Factor.
 2. If Peak Result complies with AV limit, AV Result is deemed to comply with AV limit.
 3. Test setup: RBW: 1 MHz, VBW: 3 MHz, Sweep time: auto.
 4. Peak: Peak detector.
 5. AVG: VBW refer to section 6.2.
 6. For below 6.5GHz part, filter losses were only considered in the spurious frequency bands and the authorized band were not corrected for Band Reject Filter losses.
 The proper operation of the transmitter prior to adding the filter to the measurement chain.
 7. Only the worst case emission was recorded, if it complies with the limit, the other emissions deemed to comply with the limit.



Test Mode	Channel	Polarization	Verdict
11AC20	5720	Horizontal	PASS

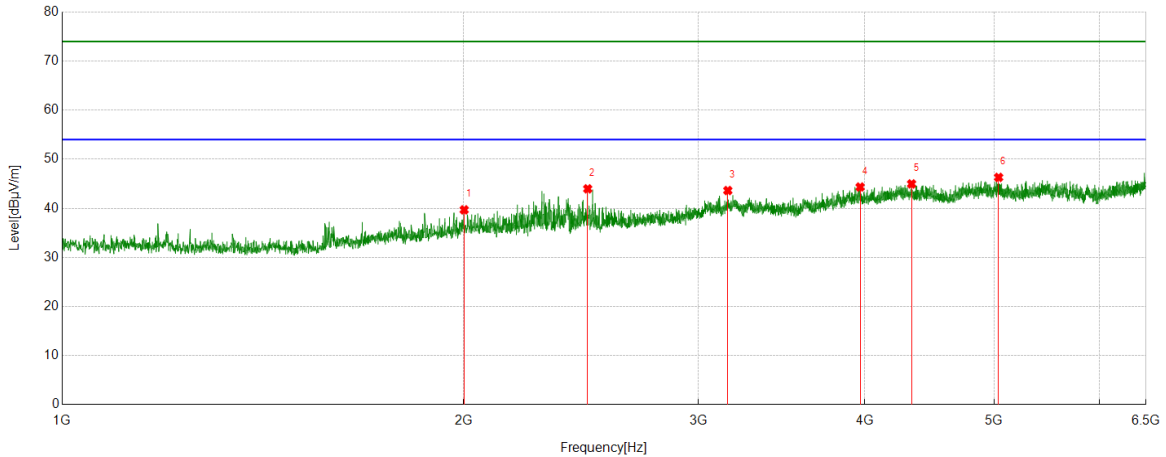


No.	Frequency	Reading Level	Correct Factor	Result	Limit	Margin	Remark
	(MHz)	(dBuV/m)	(dB)	(dBuV/m)	(dBuV/m)	(dB)	
1	2249.8611	41.05	-2.10	38.95	74.00	-35.05	peak
2	2688.6876	40.09	-0.24	39.85	74.00	-34.15	peak
3	3187.4097	40.48	3.12	43.60	74.00	-30.40	peak
4	3951.3835	38.73	5.37	44.10	74.00	-29.90	peak
5	4302.2002	38.68	5.93	44.61	74.00	-29.39	peak
6	4964.7183	39.33	6.86	46.19	74.00	-27.81	peak

- Remark: 1. Measurement = Reading Level + Correct Factor.
 2. If Peak Result complies with AV limit, AV Result is deemed to comply with AV limit.
 3. Test setup: RBW: 1 MHz, VBW: 3 MHz, Sweep time: auto.
 4. Peak: Peak detector.
 5. AVG: VBW refer to section 6.2.
 6. For below 6.5GHz part, filter losses were only considered in the spurious frequency bands and the authorized band were not corrected for Band Reject Filter losses.
 The proper operation of the transmitter prior to adding the filter to the measurement chain.
 7. Only the worst case emission was recorded, if it complies with the limit, the other emissions deemed to comply with the limit.



Test Mode	Channel	Polarization	Verdict
11AC20	5720	Vertical	PASS

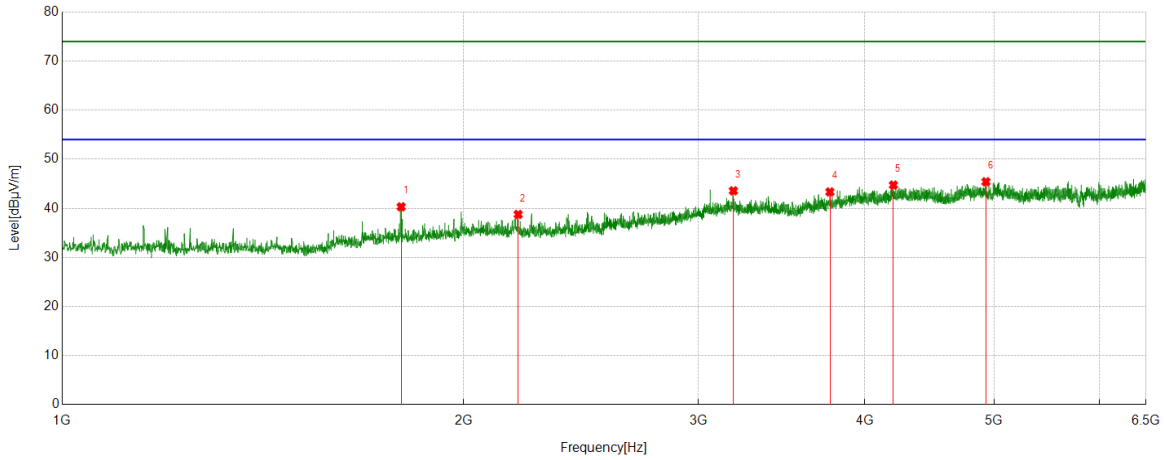


No.	Frequency	Reading Level	Correct Factor	Result	Limit	Margin	Remark
	(MHz)	(dBuV/m)	(dB)	(dBuV/m)	(dBuV/m)	(dB)	
1	2002.3336	41.84	-2.15	39.69	74.00	-34.31	peak
2	2478.442	45.91	-1.94	43.97	74.00	-30.03	peak
3	3156.8508	40.83	2.80	43.63	74.00	-30.37	peak
4	3967.2741	39.01	5.33	44.34	74.00	-29.66	peak
5	4335.8151	39.17	5.80	44.97	74.00	-29.03	peak
6	5039.2821	39.21	7.09	46.30	74.00	-27.70	peak

- Remark: 1. Measurement = Reading Level + Correct Factor.
 2. If Peak Result complies with AV limit, AV Result is deemed to comply with AV limit.
 3. Test setup: RBW: 1 MHz, VBW: 3 MHz, Sweep time: auto.
 4. Peak: Peak detector.
 5. AVG: VBW refer to section 6.2.
 6. For below 6.5GHz part, filter losses were only considered in the spurious frequency bands and the authorized band were not corrected for Band Reject Filter losses.
 The proper operation of the transmitter prior to adding the filter to the measurement chain.
 7. Only the worst case emission was recorded, if it complies with the limit, the other emissions deemed to comply with the limit.



Test Mode	Channel	Polarization	Verdict
11AC20	5745	Horizontal	PASS

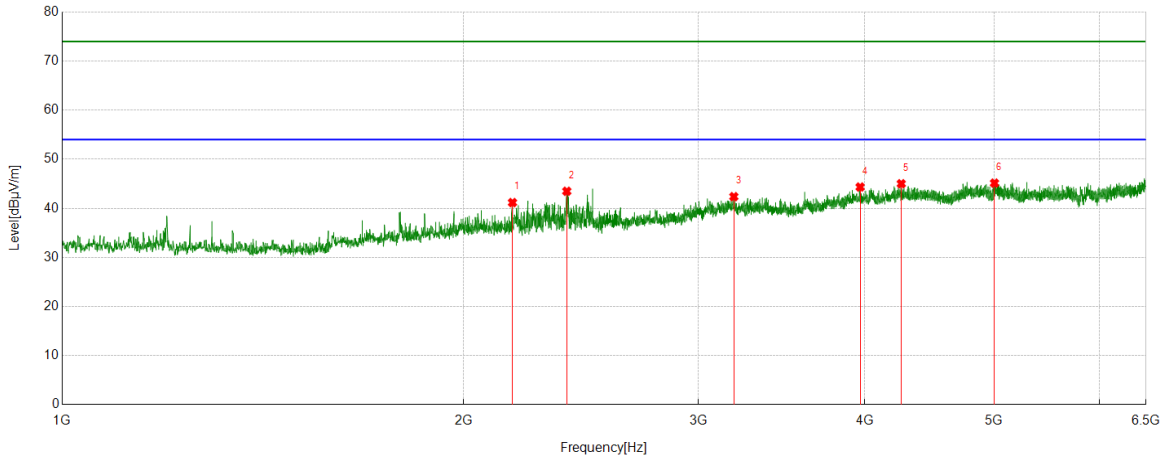


No.	Frequency	Reading Level	Correct Factor	Result	Limit	Margin	Remark
	(MHz)	(dBuV/m)	(dB)	(dBuV/m)	(dBuV/m)	(dB)	
1	1795.7551	44.22	-3.91	40.31	74.00	-33.69	peak
2	2197.9109	40.96	-2.20	38.76	74.00	-35.24	peak
3	3187.4097	40.95	2.62	43.57	74.00	-30.43	peak
4	3765.5851	39.01	4.33	43.34	74.00	-30.66	peak
5	4201.9669	39.00	5.74	44.74	74.00	-29.26	peak
6	4929.8811	38.65	6.76	45.41	74.00	-28.59	peak

- Remark: 1. Measurement = Reading Level + Correct Factor.
 2. If Peak Result complies with AV limit, AV Result is deemed to comply with AV limit.
 3. Test setup: RBW: 1 MHz, VBW: 3 MHz, Sweep time: auto.
 4. Peak: Peak detector.
 5. AVG: VBW refer to section 6.2.
 6. For below 6.5GHz part, filter losses were only considered in the spurious frequency bands and the authorized band were not corrected for Band Reject Filter losses.
 The proper operation of the transmitter prior to adding the filter to the measurement chain.
 7. Only the worst case emission was recorded, if it complies with the limit, the other emissions deemed to comply with the limit.



Test Mode	Channel	Polarization	Verdict
11AC20	5745	Vertical	PASS

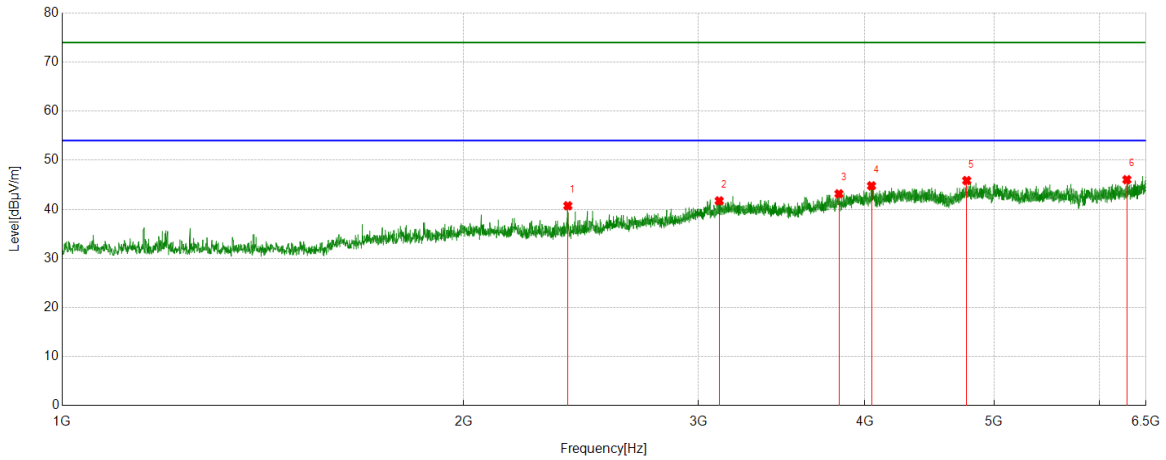


No.	Frequency	Reading Level	Correct Factor	Result	Limit	Margin	Remark
	(MHz)	(dBuV/m)	(dB)	(dBuV/m)	(dBuV/m)	(dB)	
1	2176.5196	43.58	-2.41	41.17	74.00	-32.83	peak
2	2390.4323	46.00	-2.52	43.48	74.00	-30.52	peak
3	3189.8544	39.76	2.62	42.38	74.00	-31.62	peak
4	3967.2741	39.39	4.95	44.34	74.00	-29.66	peak
5	4259.4177	38.97	6.04	45.01	74.00	-28.99	peak
6	5003.2226	38.27	6.87	45.14	74.00	-28.86	peak

- Remark: 1. Measurement = Reading Level + Correct Factor.
 2. If Peak Result complies with AV limit, AV Result is deemed to comply with AV limit.
 3. Test setup: RBW: 1 MHz, VBW: 3 MHz, Sweep time: auto.
 4. Peak: Peak detector.
 5. AVG: VBW refer to section 6.2.
 6. For below 6.5GHz part, filter losses were only considered in the spurious frequency bands and the authorized band were not corrected for Band Reject Filter losses.
 The proper operation of the transmitter prior to adding the filter to the measurement chain.
 7. Only the worst case emission was recorded, if it complies with the limit, the other emissions deemed to comply with the limit.



Test Mode	Channel	Polarization	Verdict
11AC20	5785	Horizontal	PASS

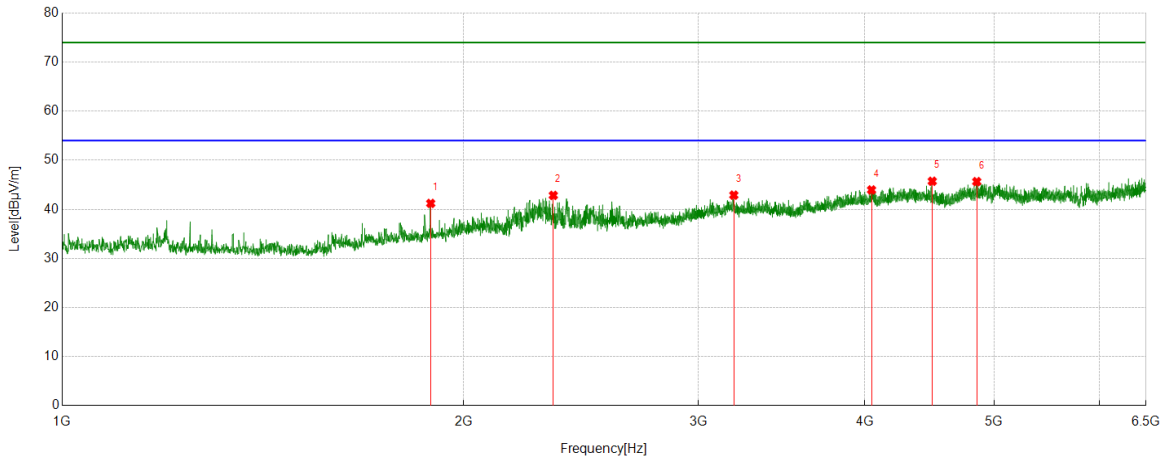


No.	Frequency	Reading Level	Correct Factor	Result	Limit	Margin	Remark
	(MHz)	(dBuV/m)	(dB)	(dBuV/m)	(dBuV/m)	(dB)	
1	2394.7105	43.25	-2.53	40.72	74.00	-33.28	peak
2	3110.4012	39.16	2.56	41.72	74.00	-32.28	peak
3	3824.8694	38.72	4.44	43.16	74.00	-30.84	peak
4	4046.1162	39.55	5.23	44.78	74.00	-29.22	peak
5	4769.141	39.64	6.22	45.86	74.00	-28.14	peak
6	6288.5321	37.98	8.06	46.04	74.00	-27.96	peak

- Remark: 1. Measurement = Reading Level + Correct Factor.
 2. If Peak Result complies with AV limit, AV Result is deemed to comply with AV limit.
 3. Test setup: RBW: 1 MHz, VBW: 3 MHz, Sweep time: auto.
 4. Peak: Peak detector.
 5. AVG: VBW refer to section 6.2.
 6. For below 6.5GHz part, filter losses were only considered in the spurious frequency bands and the authorized band were not corrected for Band Reject Filter losses.
 The proper operation of the transmitter prior to adding the filter to the measurement chain.
 7. Only the worst case emission was recorded, if it complies with the limit, the other emissions deemed to comply with the limit.



Test Mode	Channel	Polarization	Verdict
11AC20	5785	Vertical	PASS

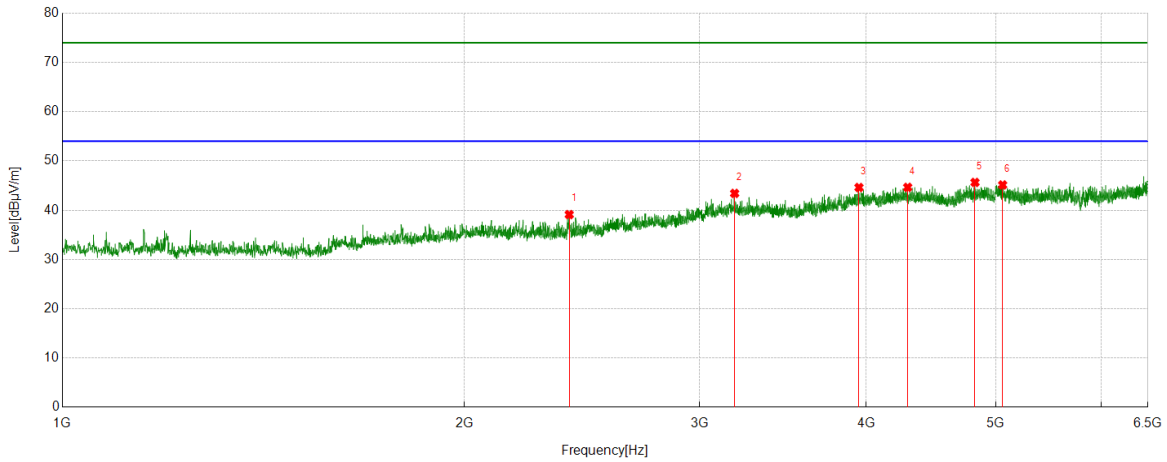


No.	Frequency	Reading Level	Correct Factor	Result	Limit	Margin	Remark
	(MHz)	(dBuV/m)	(dB)	(dBuV/m)	(dBuV/m)	(dB)	
1	1889.8767	44.48	-3.27	41.21	74.00	-32.79	peak
2	2335.4262	45.31	-2.47	42.84	74.00	-31.16	peak
3	3189.8544	40.27	2.62	42.89	74.00	-31.11	peak
4	4046.1162	38.72	5.23	43.95	74.00	-30.05	peak
5	4493.4993	40.08	5.64	45.72	74.00	-28.28	peak
6	4852.2614	39.23	6.42	45.65	74.00	-28.35	peak

- Remark: 1. Measurement = Reading Level + Correct Factor.
 2. If Peak Result complies with AV limit, AV Result is deemed to comply with AV limit.
 3. Test setup: RBW: 1 MHz, VBW: 3 MHz, Sweep time: auto.
 4. Peak: Peak detector.
 5. AVG: VBW refer to section 6.2.
 6. For below 6.5GHz part, filter losses were only considered in the spurious frequency bands and the authorized band were not corrected for Band Reject Filter losses.
 The proper operation of the transmitter prior to adding the filter to the measurement chain.
 7. Only the worst case emission was recorded, if it complies with the limit, the other emissions deemed to comply with the limit.



Test Mode	Channel	Polarization	Verdict
11AC20	5825	Horizontal	PASS

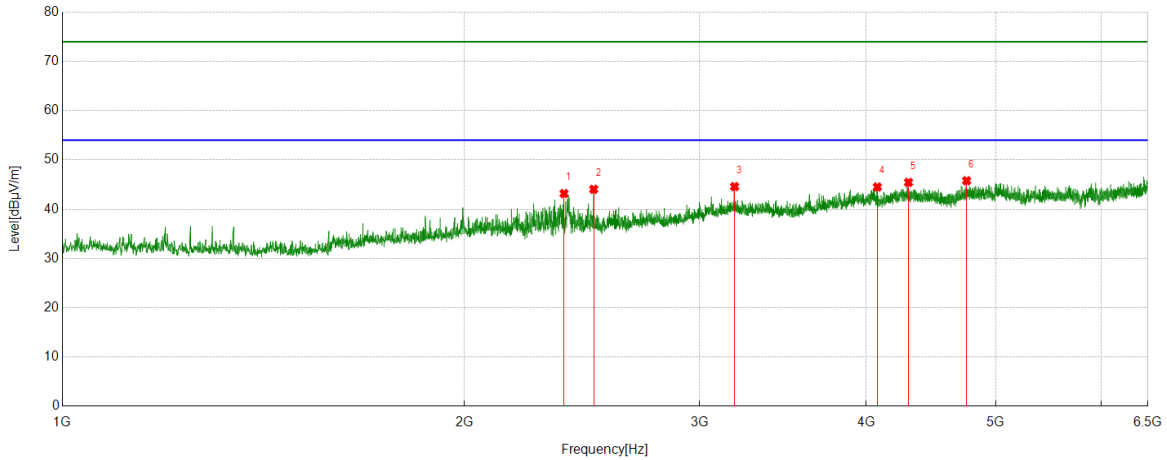


No.	Frequency	Reading Level	Correct Factor	Result	Limit	Margin	Remark
	(MHz)	(dBuV/m)	(dB)	(dBuV/m)	(dBuV/m)	(dB)	
1	2396.5441	41.64	-2.53	39.11	74.00	-34.89	peak
2	3187.4097	40.79	2.62	43.41	74.00	-30.59	peak
3	3949.55	39.46	5.15	44.61	74.00	-29.39	peak
4	4295.4773	39.02	5.62	44.64	74.00	-29.36	peak
5	4824.1471	39.17	6.47	45.64	74.00	-28.36	peak
6	5059.451	38.47	6.66	45.13	74.00	-28.87	peak

- Remark: 1. Measurement = Reading Level + Correct Factor.
 2. If Peak Result complies with AV limit, AV Result is deemed to comply with AV limit.
 3. Test setup: RBW: 1 MHz, VBW: 3 MHz, Sweep time: auto.
 4. Peak: Peak detector.
 5. AVG: VBW refer to section 6.2.
 6. For below 6.5GHz part, filter losses were only considered in the spurious frequency bands and the authorized band were not corrected for Band Reject Filter losses.
 The proper operation of the transmitter prior to adding the filter to the measurement chain.
 7. Only the worst case emission was recorded, if it complies with the limit, the other emissions deemed to comply with the limit.



Test Mode	Channel	Polarization	Verdict
11AC20	5825	Vertical	PASS

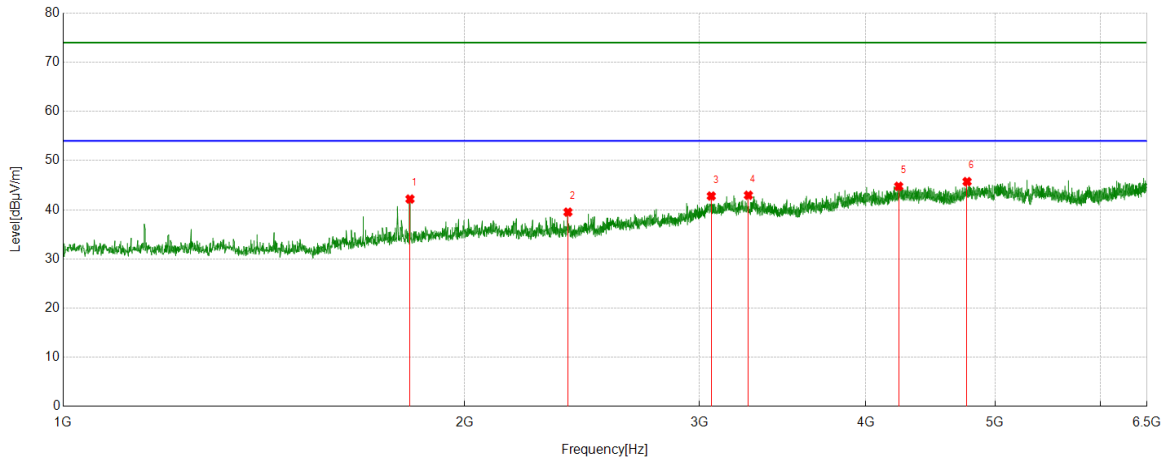


No.	Frequency	Reading Level	Correct Factor	Result	Limit	Margin	Remark
	(MHz)	(dBuV/m)	(dB)	(dBuV/m)	(dBuV/m)	(dB)	
1	2375.1528	45.75	-2.58	43.17	74.00	-30.83	peak
2	2499.8333	45.85	-1.81	44.04	74.00	-29.96	peak
3	3187.4097	41.97	2.62	44.59	74.00	-29.41	peak
4	4076.6752	39.71	4.80	44.51	74.00	-29.49	peak
5	4301.5891	39.86	5.58	45.44	74.00	-28.56	peak
6	4755.0839	39.34	6.44	45.78	74.00	-28.22	peak

- Remark: 1. Measurement = Reading Level + Correct Factor.
 2. If Peak Result complies with AV limit, AV Result is deemed to comply with AV limit.
 3. Test setup: RBW: 1 MHz, VBW: 3 MHz, Sweep time: auto.
 4. Peak: Peak detector.
 5. AVG: VBW refer to section 6.2.
 6. For below 6.5GHz part, filter losses were only considered in the spurious frequency bands and the authorized band were not corrected for Band Reject Filter losses. The proper operation of the transmitter prior to adding the filter to the measurement chain.
 7. Only the worst case emission was recorded, if it complies with the limit, the other emissions deemed to comply with the limit.



Test Mode	Channel	Polarization	Verdict
11AC40	5190	Horizontal	PASS

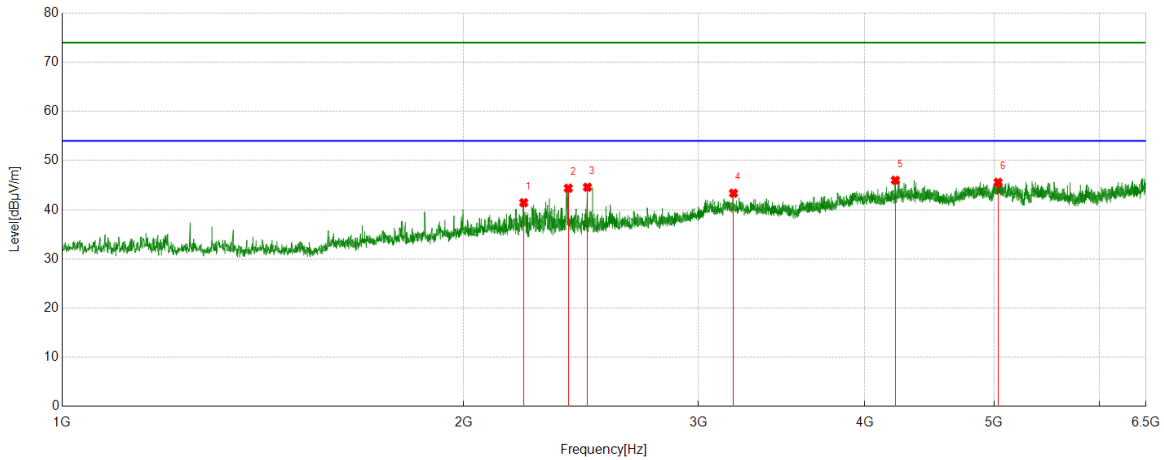


No.	Frequency	Reading Level	Correct Factor	Result	Limit	Margin	Remark
	(MHz)	(dBuV/m)	(dB)	(dBuV/m)	(dBuV/m)	(dB)	
1	1820.2022	45.84	-3.66	42.18	74.00	-31.82	peak
2	2391.0434	41.89	-2.37	39.52	74.00	-34.48	peak
3	3062.7292	39.96	2.83	42.79	74.00	-31.21	peak
4	3265.6406	40.35	2.60	42.95	74.00	-31.05	peak
5	4233.137	38.81	5.95	44.76	74.00	-29.24	peak
6	4763.6404	39.06	6.66	45.72	74.00	-28.28	peak

- Remark: 1. Measurement = Reading Level + Correct Factor.
 2. If Peak Result complies with AV limit, AV Result is deemed to comply with AV limit.
 3. Test setup: RBW: 1 MHz, VBW: 3 MHz, Sweep time: auto.
 4. Peak: Peak detector.
 5. AVG: VBW refer to section 6.2.
 6. For below 6.5GHz part, filter losses were only considered in the spurious frequency bands and the authorized band were not corrected for Band Reject Filter losses.
 The proper operation of the transmitter prior to adding the filter to the measurement chain.
 7. Only the worst case emission was recorded, if it complies with the limit, the other emissions deemed to comply with the limit.



Test Mode	Channel	Polarization	Verdict
11AC40	5190	Vertical	PASS

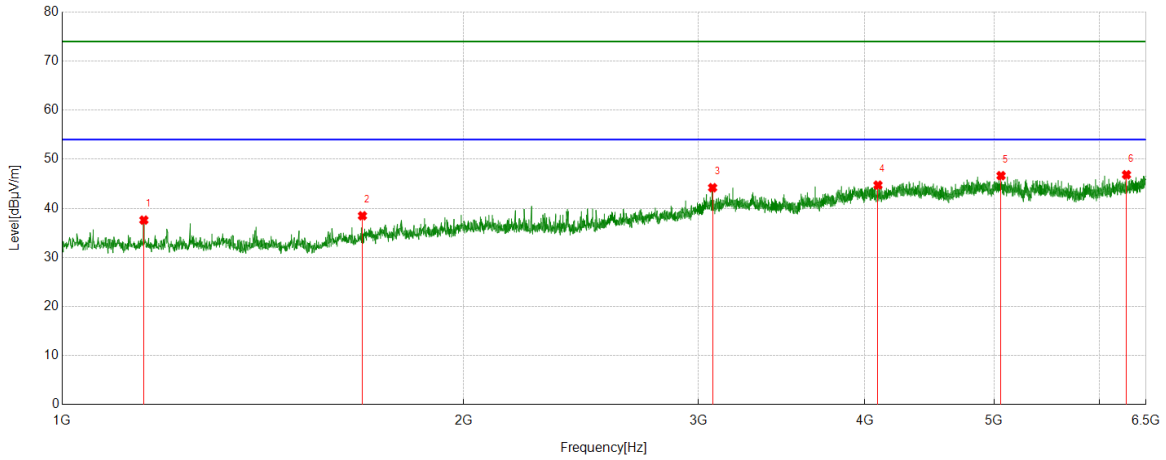


No.	Frequency	Reading Level	Correct Factor	Result	Limit	Margin	Remark
	(MHz)	(dBuV/m)	(dB)	(dBuV/m)	(dBuV/m)	(dB)	
1	2219.3021	43.65	-2.21	41.44	74.00	-32.56	peak
2	2396.5441	46.84	-2.46	44.38	74.00	-29.62	peak
3	2477.2197	46.53	-1.95	44.58	74.00	-29.42	peak
4	3188.0209	40.62	2.75	43.37	74.00	-30.63	peak
5	4216.024	40.22	5.78	46.00	74.00	-28.00	peak
6	5034.3927	38.41	7.17	45.58	74.00	-28.42	peak

- Remark: 1. Measurement = Reading Level + Correct Factor.
 2. If Peak Result complies with AV limit, AV Result is deemed to comply with AV limit.
 3. Test setup: RBW: 1 MHz, VBW: 3 MHz, Sweep time: auto.
 4. Peak: Peak detector.
 5. AVG: VBW refer to section 6.2.
 6. For below 6.5GHz part, filter losses were only considered in the spurious frequency bands and the authorized band were not corrected for Band Reject Filter losses.
 The proper operation of the transmitter prior to adding the filter to the measurement chain.
 7. Only the worst case emission was recorded, if it complies with the limit, the other emissions deemed to comply with the limit.



Test Mode	Channel	Polarization	Verdict
11AC40	5230	Horizontal	PASS

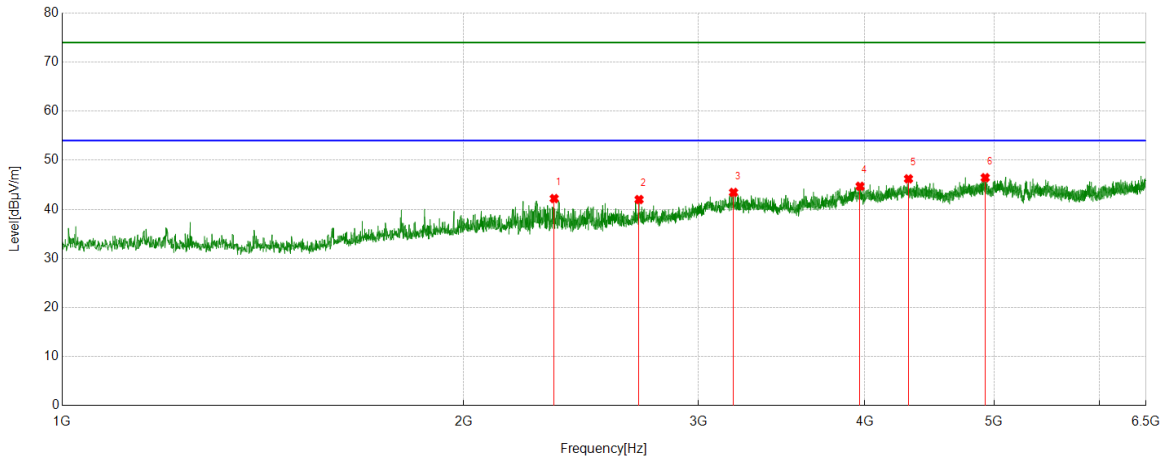


No.	Frequency	Reading Level	Correct Factor	Result	Limit	Margin	Remark
	(MHz)	(dBuV/m)	(dB)	(dBuV/m)	(dBuV/m)	(dB)	
1	1151.5724	43.11	-5.51	37.60	74.00	-36.40	peak
2	1679.6311	42.78	-4.30	38.48	74.00	-35.52	peak
3	3074.9528	41.60	2.60	44.20	74.00	-29.80	peak
4	4091.3435	39.63	5.09	44.72	74.00	-29.28	peak
5	5060.0622	39.47	7.18	46.65	74.00	-27.35	peak
6	6284.2538	38.66	8.18	46.84	74.00	-27.16	peak

- Remark: 1. Measurement = Reading Level + Correct Factor.
 2. If Peak Result complies with AV limit, AV Result is deemed to comply with AV limit.
 3. Test setup: RBW: 1 MHz, VBW: 3 MHz, Sweep time: auto.
 4. Peak: Peak detector.
 5. AVG: VBW refer to section 6.2.
 6. For below 6.5GHz part, filter losses were only considered in the spurious frequency bands and the authorized band were not corrected for Band Reject Filter losses.
 The proper operation of the transmitter prior to adding the filter to the measurement chain.
 7. Only the worst case emission was recorded, if it complies with the limit, the other emissions deemed to comply with the limit.



Test Mode	Channel	Polarization	Verdict
11AC40	5230	Vertical	PASS

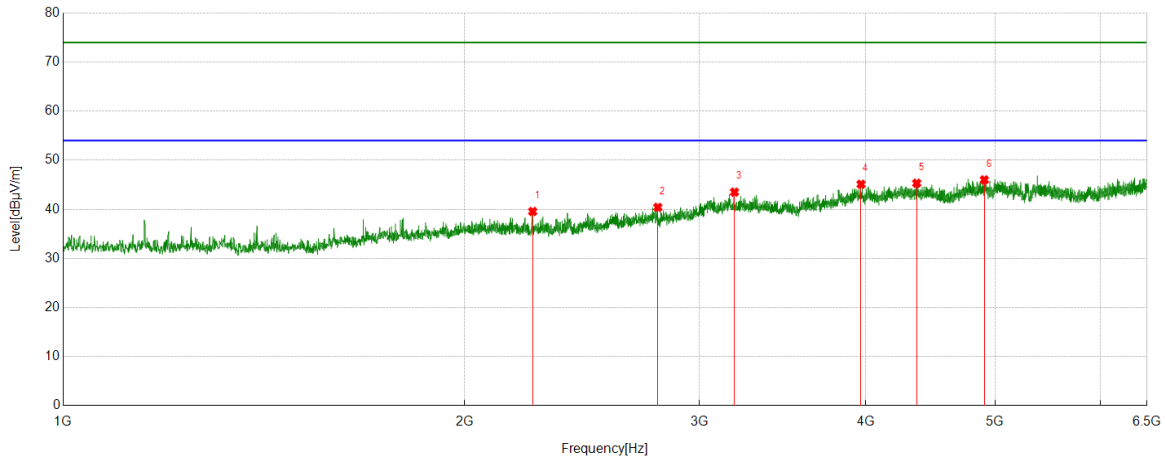


No.	Frequency	Reading Level	Correct Factor	Result	Limit	Margin	Remark
	(MHz)	(dBuV/m)	(dB)	(dBuV/m)	(dBuV/m)	(dB)	
1	2339.0932	44.36	-2.17	42.19	74.00	-31.81	peak
2	2708.2454	41.98	0.01	41.99	74.00	-32.01	peak
3	3188.0209	40.69	2.75	43.44	74.00	-30.56	peak
4	3966.663	39.51	5.18	44.69	74.00	-29.31	peak
5	4312.5903	40.46	5.75	46.21	74.00	-27.79	peak
6	4923.7693	39.47	6.97	46.44	74.00	-27.56	peak

- Remark: 1. Measurement = Reading Level + Correct Factor.
 2. If Peak Result complies with AV limit, AV Result is deemed to comply with AV limit.
 3. Test setup: RBW: 1 MHz, VBW: 3 MHz, Sweep time: auto.
 4. Peak: Peak detector.
 5. AVG: VBW refer to section 6.2.
 6. For below 6.5GHz part, filter losses were only considered in the spurious frequency bands and the authorized band were not corrected for Band Reject Filter losses.
 The proper operation of the transmitter prior to adding the filter to the measurement chain.
 7. Only the worst case emission was recorded, if it complies with the limit, the other emissions deemed to comply with the limit.



Test Mode	Channel	Polarization	Verdict
11AC40	5270	Horizontal	PASS

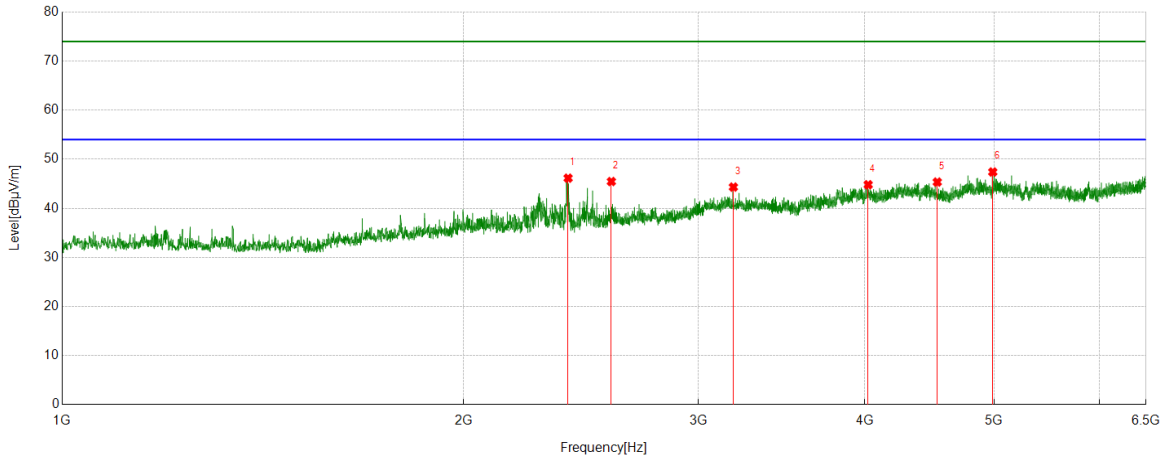


No.	Frequency	Reading Level	Correct Factor	Result	Limit	Margin	Remark
	(MHz)	(dBuV/m)	(dB)	(dBuV/m)	(dBuV/m)	(dB)	
1	2249.8611	41.81	-2.25	39.56	74.00	-34.44	peak
2	2792.5881	40.21	0.19	40.40	74.00	-33.60	peak
3	3188.0209	40.76	2.75	43.51	74.00	-30.49	peak
4	3966.663	39.93	5.18	45.11	74.00	-28.89	peak
5	4366.9852	39.44	5.88	45.32	74.00	-28.68	peak
6	4907.8787	39.01	6.99	46.00	74.00	-28.00	peak

- Remark: 1. Measurement = Reading Level + Correct Factor.
 2. If Peak Result complies with AV limit, AV Result is deemed to comply with AV limit.
 3. Test setup: RBW: 1 MHz, VBW: 3 MHz, Sweep time: auto.
 4. Peak: Peak detector.
 5. AVG: VBW refer to section 6.2.
 6. For below 6.5GHz part, filter losses were only considered in the spurious frequency bands and the authorized band were not corrected for Band Reject Filter losses.
 The proper operation of the transmitter prior to adding the filter to the measurement chain.
 7. Only the worst case emission was recorded, if it complies with the limit, the other emissions deemed to comply with the limit.



Test Mode	Channel	Polarization	Verdict
11AC40	5270	Vertical	PASS

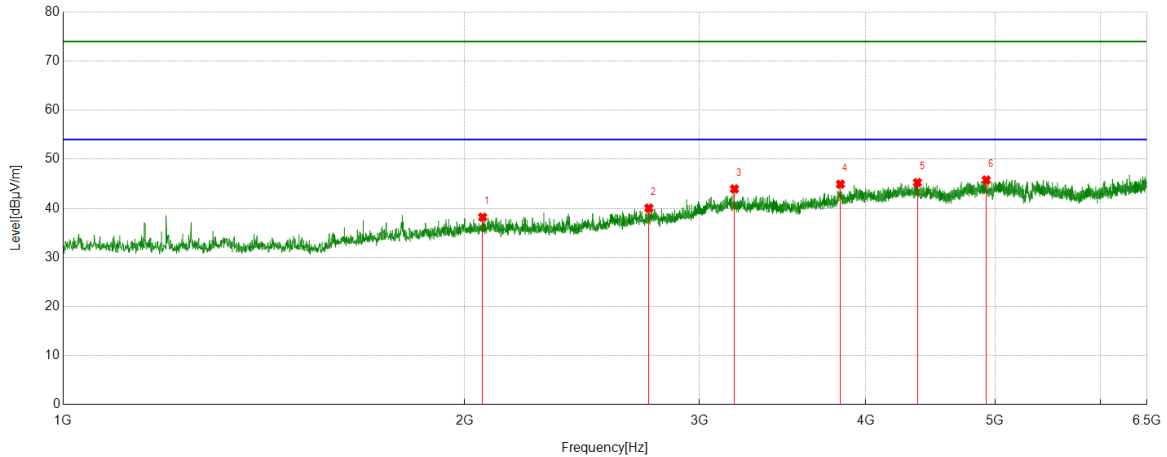


No.	Frequency	Reading Level	Correct Factor	Result	Limit	Margin	Remark
	(MHz)	(dBuV/m)	(dB)	(dBuV/m)	(dBuV/m)	(dB)	
1	2395.9329	48.60	-2.45	46.15	74.00	-27.85	peak
2	2581.7313	46.49	-1.03	45.46	74.00	-28.54	peak
3	3187.4097	41.58	2.75	44.33	74.00	-29.67	peak
4	4022.8914	39.46	5.35	44.81	74.00	-29.19	peak
5	4532.6147	39.70	5.65	45.35	74.00	-28.65	peak
6	4988.5543	40.20	7.20	47.40	74.00	-26.60	peak

- Remark: 1. Measurement = Reading Level + Correct Factor.
 2. If Peak Result complies with AV limit, AV Result is deemed to comply with AV limit.
 3. Test setup: RBW: 1 MHz, VBW: 3 MHz, Sweep time: auto.
 4. Peak: Peak detector.
 5. AVG: VBW refer to section 6.2.
 6. For below 6.5GHz part, filter losses were only considered in the spurious frequency bands and the authorized band were not corrected for Band Reject Filter losses.
 The proper operation of the transmitter prior to adding the filter to the measurement chain.
 7. Only the worst case emission was recorded, if it complies with the limit, the other emissions deemed to comply with the limit.



Test Mode	Channel	Polarization	Verdict
11AC40	5310	Horizontal	PASS

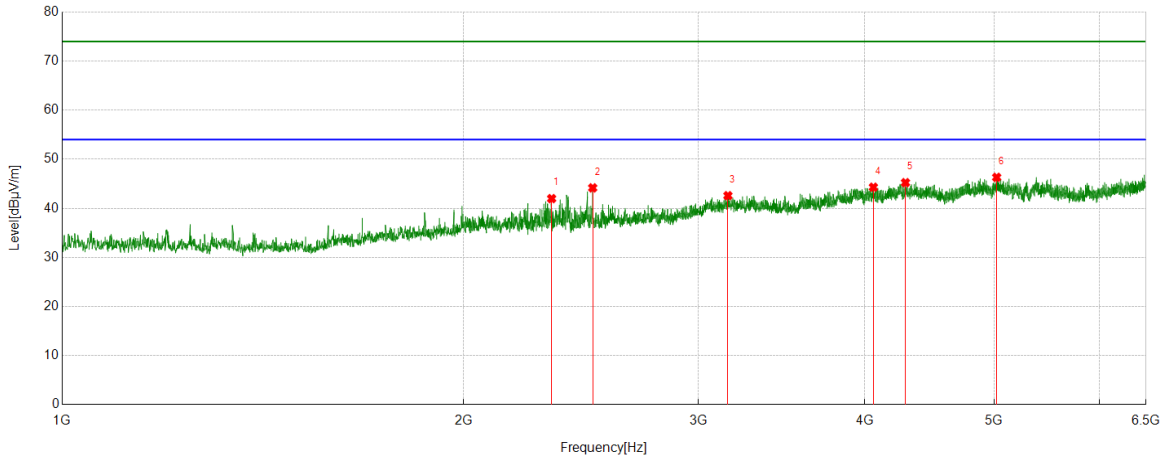


No.	Frequency	Reading Level	Correct Factor	Result	Limit	Margin	Remark
	(MHz)	(dBuV/m)	(dB)	(dBuV/m)	(dBuV/m)	(dB)	
1	2063.4515	40.34	-2.14	38.20	74.00	-35.80	peak
2	2749.8055	39.62	0.42	40.04	74.00	-33.96	peak
3	3187.4097	41.20	2.75	43.95	74.00	-30.05	peak
4	3827.9253	39.89	5.02	44.91	74.00	-29.09	peak
5	4372.4858	39.35	5.89	45.24	74.00	-28.76	peak
6	4923.7693	38.80	6.97	45.77	74.00	-28.23	peak

- Remark: 1. Measurement = Reading Level + Correct Factor.
 2. If Peak Result complies with AV limit, AV Result is deemed to comply with AV limit.
 3. Test setup: RBW: 1 MHz, VBW: 3 MHz, Sweep time: auto.
 4. Peak: Peak detector.
 5. AVG: VBW refer to section 6.2.
 6. For below 6.5GHz part, filter losses were only considered in the spurious frequency bands and the authorized band were not corrected for Band Reject Filter losses.
 The proper operation of the transmitter prior to adding the filter to the measurement chain.
 7. Only the worst case emission was recorded, if it complies with the limit, the other emissions deemed to comply with the limit.



Test Mode	Channel	Polarization	Verdict
11AC40	5310	Vertical	PASS

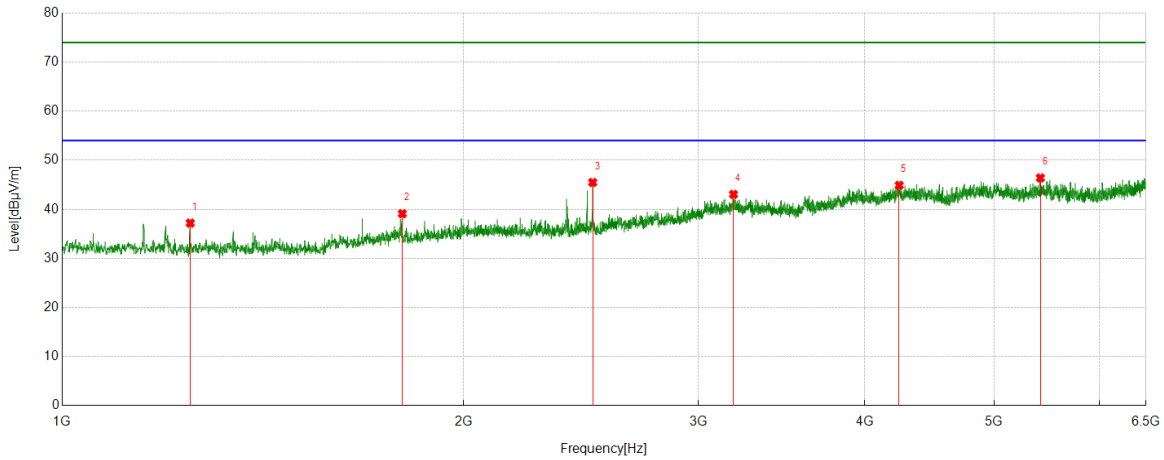


No.	Frequency	Reading Level	Correct Factor	Result	Limit	Margin	Remark
	(MHz)	(dBuV/m)	(dB)	(dBuV/m)	(dBuV/m)	(dB)	
1	2328.7032	44.20	-2.22	41.98	74.00	-32.02	peak
2	2499.8333	45.81	-1.64	44.17	74.00	-29.83	peak
3	3157.4619	39.56	3.02	42.58	74.00	-31.42	peak
4	4058.951	39.14	5.16	44.30	74.00	-29.70	peak
5	4290.5878	39.10	6.13	45.23	74.00	-28.77	peak
6	5022.1691	39.16	7.15	46.31	74.00	-27.69	peak

- Remark: 1. Measurement = Reading Level + Correct Factor.
 2. If Peak Result complies with AV limit, AV Result is deemed to comply with AV limit.
 3. Test setup: RBW: 1 MHz, VBW: 3 MHz, Sweep time: auto.
 4. Peak: Peak detector.
 5. AVG: VBW refer to section 6.2.
 6. For below 6.5GHz part, filter losses were only considered in the spurious frequency bands and the authorized band were not corrected for Band Reject Filter losses.
 The proper operation of the transmitter prior to adding the filter to the measurement chain.
 7. Only the worst case emission was recorded, if it complies with the limit, the other emissions deemed to comply with the limit.



Test Mode	Channel	Polarization	Verdict
11AC40	5510	Horizontal	PASS

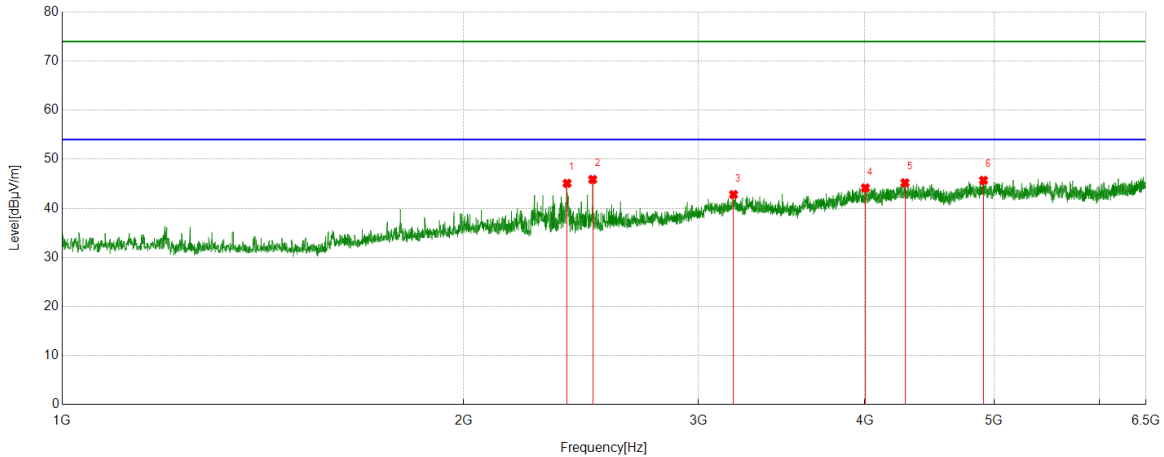


No.	Frequency	Reading Level	Correct Factor	Result	Limit	Margin	Remark
	(MHz)	(dBuV/m)	(dB)	(dBuV/m)	(dBuV/m)	(dB)	
1	1247.5275	42.91	-5.71	37.20	74.00	-36.80	peak
2	1799.4222	42.76	-3.65	39.11	74.00	-34.89	peak
3	2499.8333	47.05	-1.57	45.48	74.00	-28.52	peak
4	3188.0209	39.92	3.13	43.05	74.00	-30.95	peak
5	4244.1382	38.44	6.45	44.89	74.00	-29.11	peak
6	5415.7684	38.92	7.48	46.40	74.00	-27.60	peak

- Remark: 1. Measurement = Reading Level + Correct Factor.
 2. If Peak Result complies with AV limit, AV Result is deemed to comply with AV limit.
 3. Test setup: RBW: 1 MHz, VBW: 3 MHz, Sweep time: auto.
 4. Peak: Peak detector.
 5. AVG: VBW refer to section 6.2.
 6. For below 6.5GHz part, filter losses were only considered in the spurious frequency bands and the authorized band were not corrected for Band Reject Filter losses.
 The proper operation of the transmitter prior to adding the filter to the measurement chain.
 7. Only the worst case emission was recorded, if it complies with the limit, the other emissions deemed to comply with the limit.



Test Mode	Channel	Polarization	Verdict
11AC40	5510	Vertical	PASS

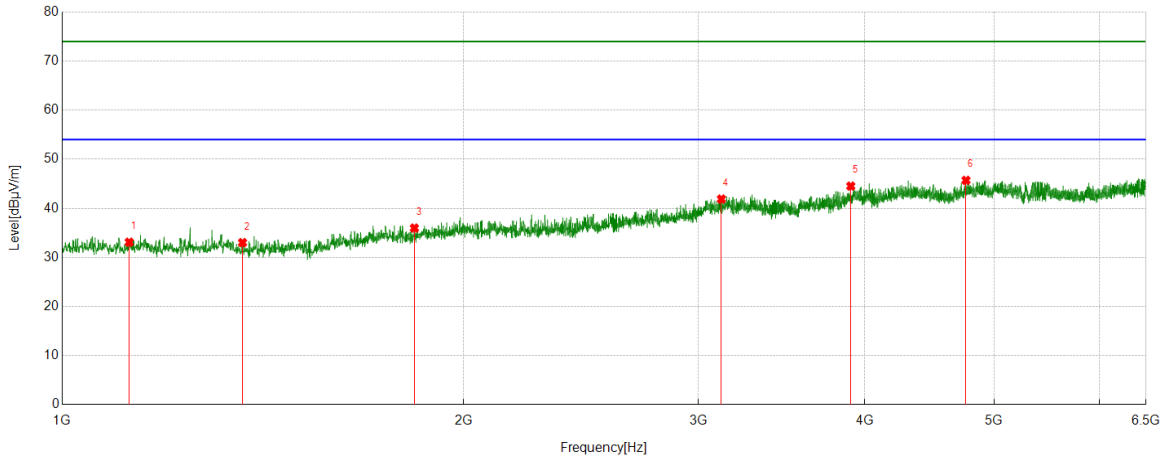


No.	Frequency	Reading Level	Correct Factor	Result	Limit	Margin	Remark
	(MHz)	(dBuV/m)	(dB)	(dBuV/m)	(dBuV/m)	(dB)	
1	2391.6546	47.54	-2.45	45.09	74.00	-28.91	peak
2	2499.8333	47.45	-1.57	45.88	74.00	-28.12	peak
3	3188.0209	39.68	3.13	42.81	74.00	-31.19	peak
4	4003.3337	39.20	4.95	44.15	74.00	-29.85	peak
5	4286.3096	39.07	6.13	45.20	74.00	-28.80	peak
6	4909.101	38.63	7.07	45.70	74.00	-28.30	peak

- Remark: 1. Measurement = Reading Level + Correct Factor.
 2. If Peak Result complies with AV limit, AV Result is deemed to comply with AV limit.
 3. Test setup: RBW: 1 MHz, VBW: 3 MHz, Sweep time: auto.
 4. Peak: Peak detector.
 5. AVG: VBW refer to section 6.2.
 6. For below 6.5GHz part, filter losses were only considered in the spurious frequency bands and the authorized band were not corrected for Band Reject Filter losses
 The proper operation of the transmitter prior to adding the filter to the measurement chain.
 7. Only the worst case emission was recorded, if it complies with the limit, the other emissions deemed to comply with the limit.



Test Mode	Channel	Polarization	Verdict
11AC40	5550	Horizontal	PASS

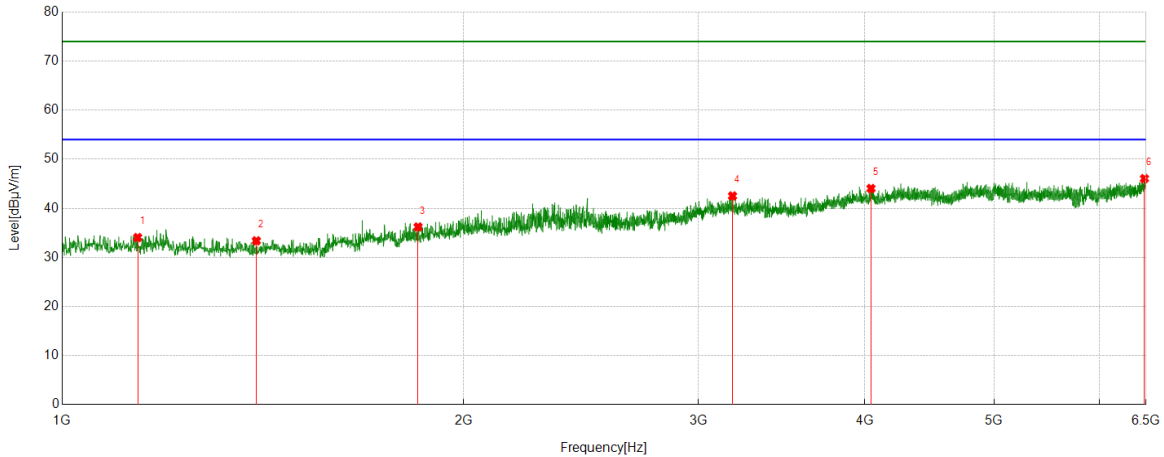


No.	Frequency	Reading Level	Correct Factor	Result	Limit	Margin	Remark
	(MHz)	(dBuV/m)	(dB)	(dBuV/m)	(dBuV/m)	(dB)	
1	1122.847	38.64	-5.54	33.10	74.00	-40.90	peak
2	1365.4851	39.01	-5.99	33.02	74.00	-40.98	peak
3	1837.3153	39.54	-3.56	35.98	74.00	-38.02	peak
4	3122.0136	38.83	3.06	41.89	74.00	-32.11	peak
5	3903.7115	39.69	4.84	44.53	74.00	-29.47	peak
6	4763.0292	39.02	6.68	45.70	74.00	-28.30	peak

- Remark: 1. Measurement = Reading Level + Correct Factor.
 2. If Peak Result complies with AV limit, AV Result is deemed to comply with AV limit.
 3. Test setup: RBW: 1 MHz, VBW: 3 MHz, Sweep time: auto.
 4. Peak: Peak detector.
 5. AVG: VBW refer to section 6.2.
 6. For below 6.5GHz part, filter losses were only considered in the spurious frequency bands and the authorized band were not corrected for Band Reject Filter losses.
 The proper operation of the transmitter prior to adding the filter to the measurement chain.
 7. Only the worst case emission was recorded, if it complies with the limit, the other emissions deemed to comply with the limit.



Test Mode	Channel	Polarization	Verdict
11AC40	5550	Vertical	PASS

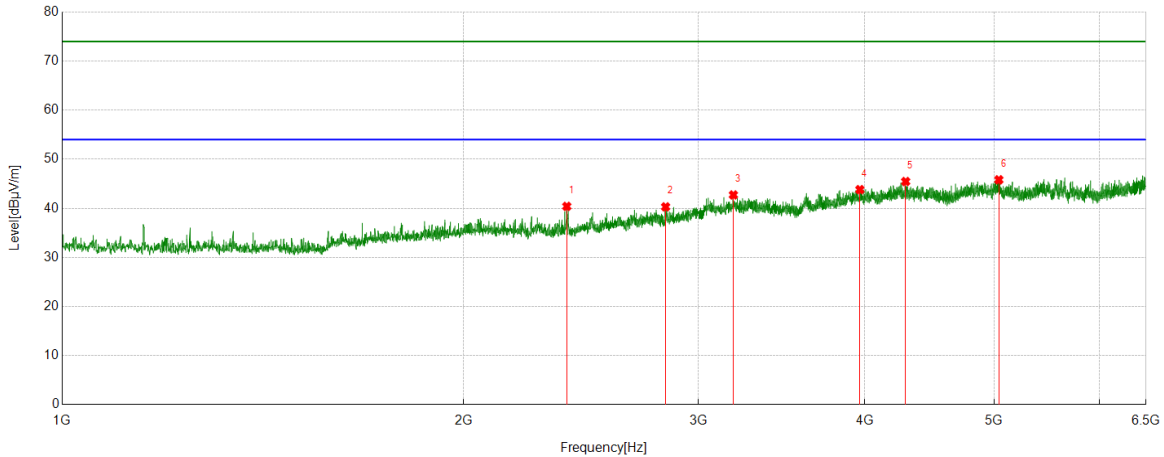


No.	Frequency	Reading Level	Correct Factor	Result	Limit	Margin	Remark
	(MHz)	(dBuV/m)	(dB)	(dBuV/m)	(dBuV/m)	(dB)	
1	1139.3488	39.60	-5.55	34.05	74.00	-39.95	peak
2	1398.4887	39.60	-6.22	33.38	74.00	-40.62	peak
3	1848.9277	39.88	-3.67	36.21	74.00	-37.79	peak
4	3182.5203	39.91	2.62	42.53	74.00	-31.47	peak
5	4042.4492	38.93	5.11	44.04	74.00	-29.96	peak
6	6482.2758	36.59	9.47	46.06	74.00	-27.94	peak

- Remark: 1. Measurement = Reading Level + Correct Factor.
 2. If Peak Result complies with AV limit, AV Result is deemed to comply with AV limit.
 3. Test setup: RBW: 1 MHz, VBW: 3 MHz, Sweep time: auto.
 4. Peak: Peak detector.
 5. AVG: VBW refer to section 6.2.
 6. For below 6.5GHz part, filter losses were only considered in the spurious frequency bands and the authorized band were not corrected for Band Reject Filter losses.
 The proper operation of the transmitter prior to adding the filter to the measurement chain.
 7. Only the worst case emission was recorded, if it complies with the limit, the other emissions deemed to comply with the limit.



Test Mode	Channel	Polarization	Verdict
11AC40	5670	Horizontal	PASS

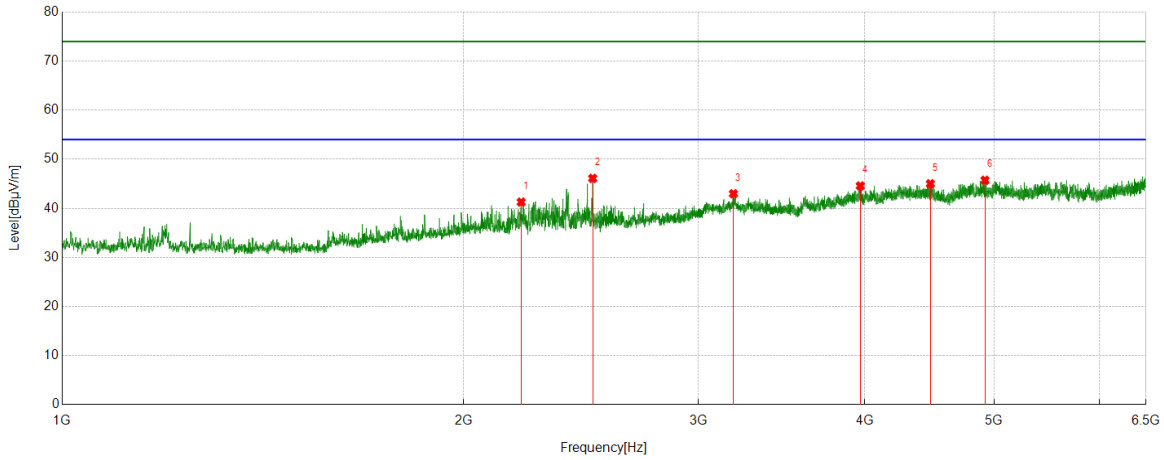


No.	Frequency	Reading Level	Correct Factor	Result	Limit	Margin	Remark
	(MHz)	(dBuV/m)	(dB)	(dBuV/m)	(dBuV/m)	(dB)	
1	2390.4323	42.84	-2.44	40.40	74.00	-33.60	peak
2	2835.3706	39.83	0.47	40.30	74.00	-33.70	peak
3	3187.4097	39.61	3.12	42.73	74.00	-31.27	peak
4	3965.4406	38.51	5.30	43.81	74.00	-30.19	peak
5	4291.8102	39.40	6.06	45.46	74.00	-28.54	peak
6	5041.1157	38.76	7.05	45.81	74.00	-28.19	peak

- Remark: 1. Measurement = Reading Level + Correct Factor.
 2. If Peak Result complies with AV limit, AV Result is deemed to comply with AV limit.
 3. Test setup: RBW: 1 MHz, VBW: 3 MHz, Sweep time: auto.
 4. Peak: Peak detector.
 5. AVG: VBW refer to section 6.2.
 6. For below 6.5GHz part, filter losses were only considered in the spurious frequency bands and the authorized band were not corrected for Band Reject Filter losses.
 The proper operation of the transmitter prior to adding the filter to the measurement chain.
 7. Only the worst case emission was recorded, if it complies with the limit, the other emissions deemed to comply with the limit.



Test Mode	Channel	Polarization	Verdict
11AC40	5670	Vertical	PASS

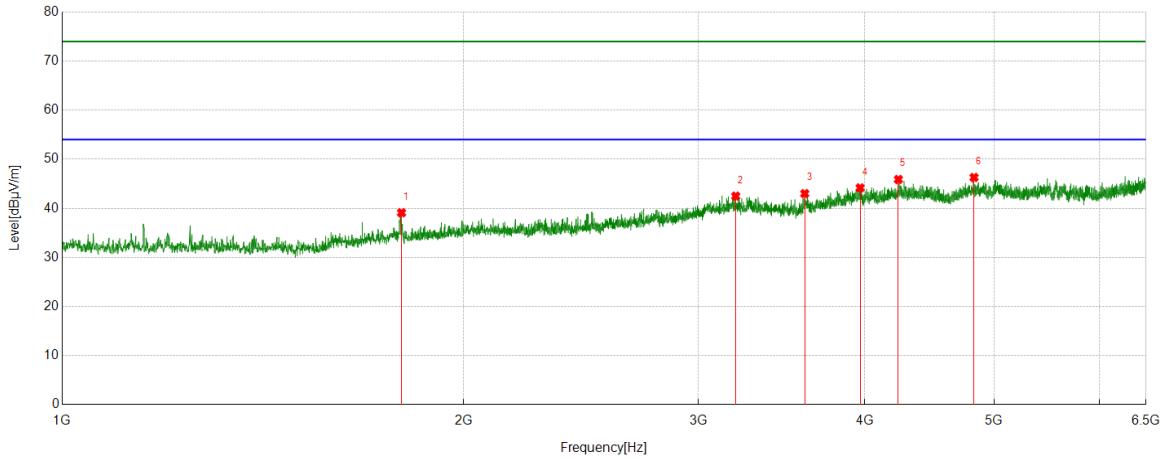


No.	Frequency	Reading Level	Correct Factor	Result	Limit	Margin	Remark
	(MHz)	(dBuV/m)	(dB)	(dBuV/m)	(dBuV/m)	(dB)	
1	2209.5233	43.59	-2.32	41.27	74.00	-32.73	peak
2	2499.8333	47.68	-1.57	46.11	74.00	-27.89	peak
3	3187.4097	39.85	3.12	42.97	74.00	-31.03	peak
4	3968.4965	39.23	5.34	44.57	74.00	-29.43	peak
5	4478.831	39.13	5.88	45.01	74.00	-28.99	peak
6	4921.9358	38.63	7.09	45.72	74.00	-28.28	peak

- Remark: 1. Measurement = Reading Level + Correct Factor.
 2. If Peak Result complies with AV limit, AV Result is deemed to comply with AV limit.
 3. Test setup: RBW: 1 MHz, VBW: 3 MHz, Sweep time: auto.
 4. Peak: Peak detector.
 5. AVG: VBW refer to section 6.2.
 6. For below 6.5GHz part, filter losses were only considered in the spurious frequency bands and the authorized band were not corrected for Band Reject Filter losses.
 The proper operation of the transmitter prior to adding the filter to the measurement chain.
 7. Only the worst case emission was recorded, if it complies with the limit, the other emissions deemed to comply with the limit.



Test Mode	Channel	Polarization	Verdict
11AC40	5710	Horizontal	PASS

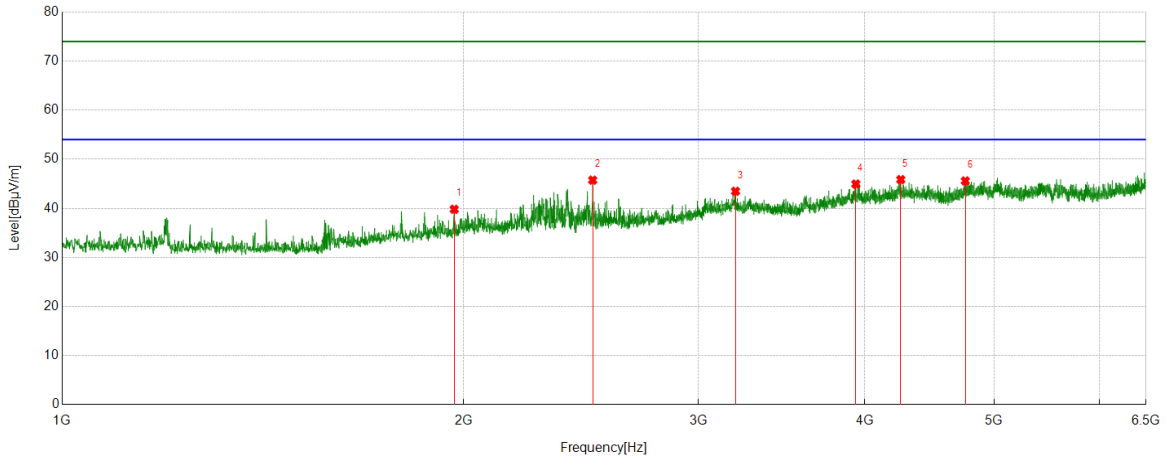


No.	Frequency	Reading Level	Correct Factor	Result	Limit	Margin	Remark
	(MHz)	(dBuV/m)	(dB)	(dBuV/m)	(dBuV/m)	(dB)	
1	1796.9774	42.79	-3.69	39.10	74.00	-34.90	peak
2	3200.2445	39.56	2.92	42.48	74.00	-31.52	peak
3	3605.4562	39.33	3.67	43.00	74.00	-31.00	peak
4	3967.2741	38.83	5.33	44.16	74.00	-29.84	peak
5	4238.0264	39.48	6.40	45.88	74.00	-28.12	peak
6	4829.6477	39.50	6.79	46.29	74.00	-27.71	peak

- Remark: 1. Measurement = Reading Level + Correct Factor.
 2. If Peak Result complies with AV limit, AV Result is deemed to comply with AV limit.
 3. Test setup: RBW: 1 MHz, VBW: 3 MHz, Sweep time: auto.
 4. Peak: Peak detector.
 5. AVG: VBW refer to section 6.2.
 6. For below 6.5GHz part, filter losses were only considered in the spurious frequency bands and the authorized band were not corrected for Band Reject Filter losses.
 The proper operation of the transmitter prior to adding the filter to the measurement chain.
 7. Only the worst case emission was recorded, if it complies with the limit, the other emissions deemed to comply with the limit.



Test Mode	Channel	Polarization	Verdict
11AC40	5710	Vertical	PASS

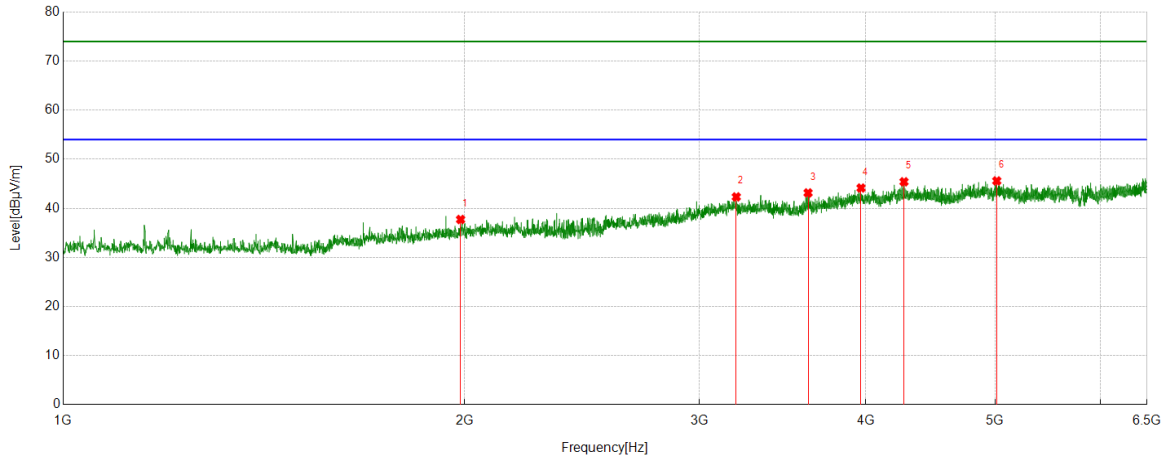


No.	Frequency	Reading Level	Correct Factor	Result	Limit	Margin	Remark
	(MHz)	(dBuV/m)	(dB)	(dBuV/m)	(dBuV/m)	(dB)	
1	1968.1076	42.55	-2.74	39.81	74.00	-34.19	peak
2	2499.8333	47.31	-1.57	45.74	74.00	-28.26	peak
3	3199.0221	40.53	2.95	43.48	74.00	-30.52	peak
4	3937.9375	39.59	5.36	44.95	74.00	-29.05	peak
5	4255.7506	39.65	6.20	45.85	74.00	-28.15	peak
6	4757.5286	38.94	6.64	45.58	74.00	-28.42	peak

- Remark: 1. Measurement = Reading Level + Correct Factor.
 2. If Peak Result complies with AV limit, AV Result is deemed to comply with AV limit.
 3. Test setup: RBW: 1 MHz, VBW: 3 MHz, Sweep time: auto.
 4. Peak: Peak detector.
 5. AVG: VBW refer to section 6.2.
 6. For below 6.5GHz part, filter losses were only considered in the spurious frequency bands and the authorized band were not corrected for Band Reject Filter losses.
 The proper operation of the transmitter prior to adding the filter to the measurement chain.
 7. Only the worst case emission was recorded, if it complies with the limit, the other emissions deemed to comply with the limit.



Test Mode	Channel	Polarization	Verdict
11AC40	5755	Horizontal	PASS

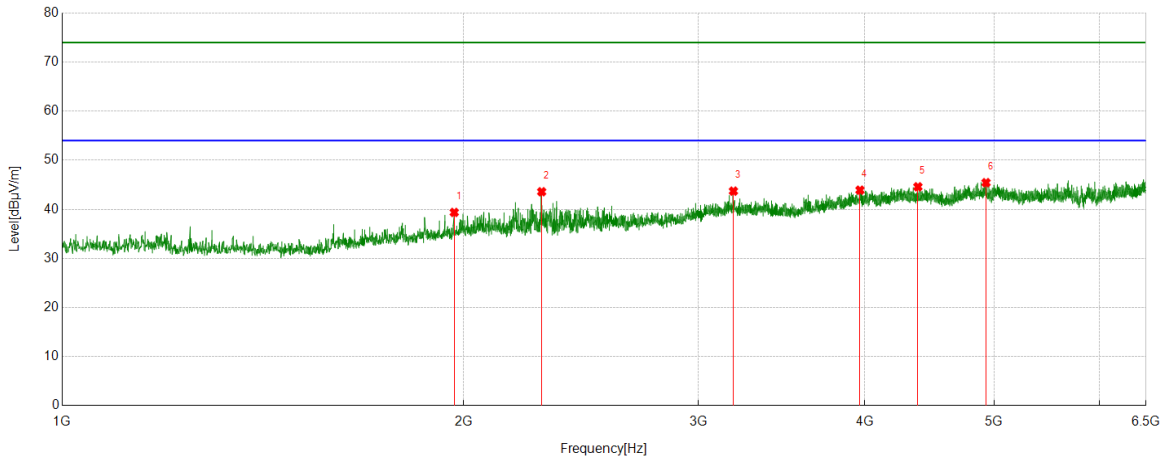


No.	Frequency	Reading Level	Correct Factor	Result	Limit	Margin	Remark
	(MHz)	(dBuV/m)	(dB)	(dBuV/m)	(dBuV/m)	(dB)	
1	1986.4429	40.30	-2.57	37.73	74.00	-36.27	peak
2	3197.7998	39.91	2.42	42.33	74.00	-31.67	peak
3	3620.1245	39.93	3.22	43.15	74.00	-30.85	peak
4	3966.663	39.19	4.95	44.14	74.00	-29.86	peak
5	4272.2525	39.45	5.96	45.41	74.00	-28.59	peak
6	5014.2238	38.98	6.61	45.59	74.00	-28.41	peak

- Remark: 1. Measurement = Reading Level + Correct Factor.
 2. If Peak Result complies with AV limit, AV Result is deemed to comply with AV limit.
 3. Test setup: RBW: 1 MHz, VBW: 3 MHz, Sweep time: auto.
 4. Peak: Peak detector.
 5. AVG: VBW refer to section 6.2.
 6. For below 6.5GHz part, filter losses were only considered in the spurious frequency bands and the authorized band were not corrected for Band Reject Filter losses.
 The proper operation of the transmitter prior to adding the filter to the measurement chain.
 7. Only the worst case emission was recorded, if it complies with the limit, the other emissions deemed to comply with the limit.



Test Mode	Channel	Polarization	Verdict
11AC40	5755	Vertical	PASS

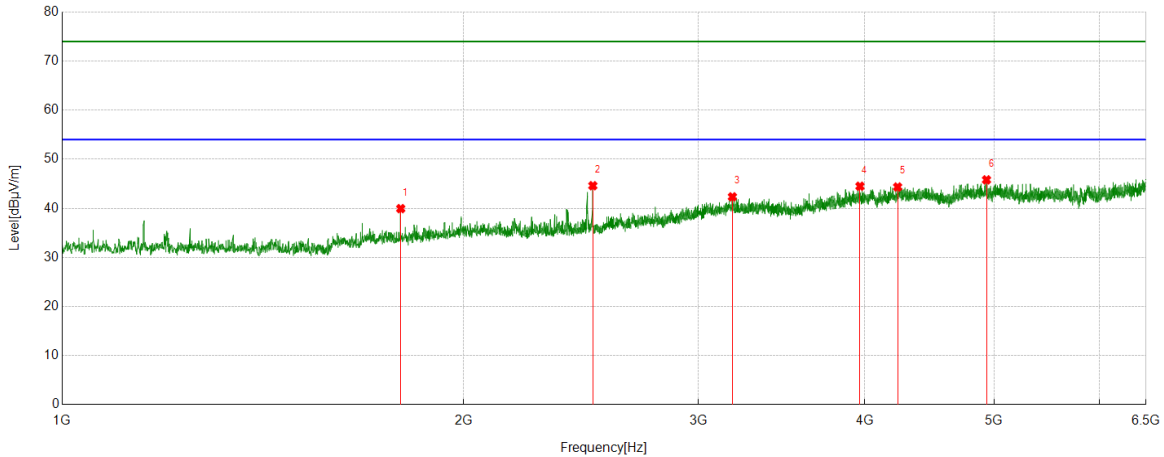


No.	Frequency	Reading Level	Correct Factor	Result	Limit	Margin	Remark
	(MHz)	(dBuV/m)	(dB)	(dBuV/m)	(dBuV/m)	(dB)	
1	1968.1076	42.12	-2.75	39.37	74.00	-34.63	peak
2	2288.9766	46.09	-2.51	43.58	74.00	-30.42	peak
3	3187.4097	41.09	2.62	43.71	74.00	-30.29	peak
4	3966.0518	38.96	4.95	43.91	74.00	-30.09	peak
5	4383.4871	39.02	5.57	44.59	74.00	-29.41	peak
6	4930.4923	38.66	6.77	45.43	74.00	-28.57	peak

- Remark: 1. Measurement = Reading Level + Correct Factor.
 2. If Peak Result complies with AV limit, AV Result is deemed to comply with AV limit.
 3. Test setup: RBW: 1 MHz, VBW: 3 MHz, Sweep time: auto.
 4. Peak: Peak detector.
 5. AVG: VBW refer to section 6.2.
 6. For below 6.5GHz part, filter losses were only considered in the spurious frequency bands and the authorized band were not corrected for Band Reject Filter losses.
 The proper operation of the transmitter prior to adding the filter to the measurement chain.
 7. Only the worst case emission was recorded, if it complies with the limit, the other emissions deemed to comply with the limit.



Test Mode	Channel	Polarization	Verdict
11AC40	5795	Horizontal	PASS

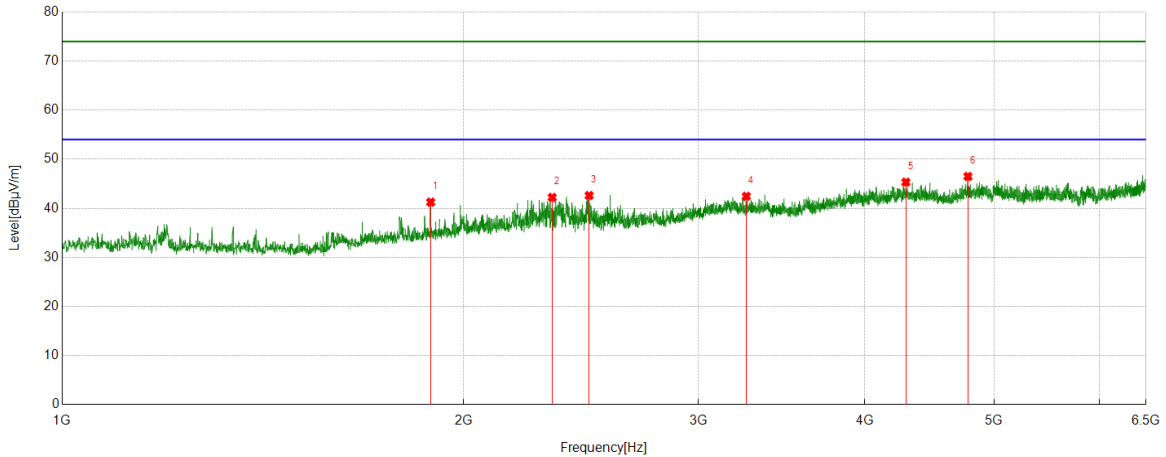


No.	Frequency	Reading Level	Correct Factor	Result	Limit	Margin	Remark
	(MHz)	(dBuV/m)	(dB)	(dBuV/m)	(dBuV/m)	(dB)	
1	1794.5327	43.88	-3.94	39.94	74.00	-34.06	peak
2	2500.4445	46.41	-1.80	44.61	74.00	-29.39	peak
3	3181.9091	39.72	2.62	42.34	74.00	-31.66	peak
4	3966.0518	39.55	4.95	44.50	74.00	-29.50	peak
5	4232.5258	38.69	5.66	44.35	74.00	-29.65	peak
6	4934.7705	38.99	6.81	45.80	74.00	-28.20	peak

- Remark: 1. Measurement = Reading Level + Correct Factor.
 2. If Peak Result complies with AV limit, AV Result is deemed to comply with AV limit.
 3. Test setup: RBW: 1 MHz, VBW: 3 MHz, Sweep time: auto.
 4. Peak: Peak detector.
 5. AVG: VBW refer to section 6.2.
 6. For below 6.5GHz part, filter losses were only considered in the spurious frequency bands and the authorized band were not corrected for Band Reject Filter losses.
 The proper operation of the transmitter prior to adding the filter to the measurement chain.
 7. Only the worst case emission was recorded, if it complies with the limit, the other emissions deemed to comply with the limit.



Test Mode	Channel	Polarization	Verdict
11AC40	5795	Vertical	PASS

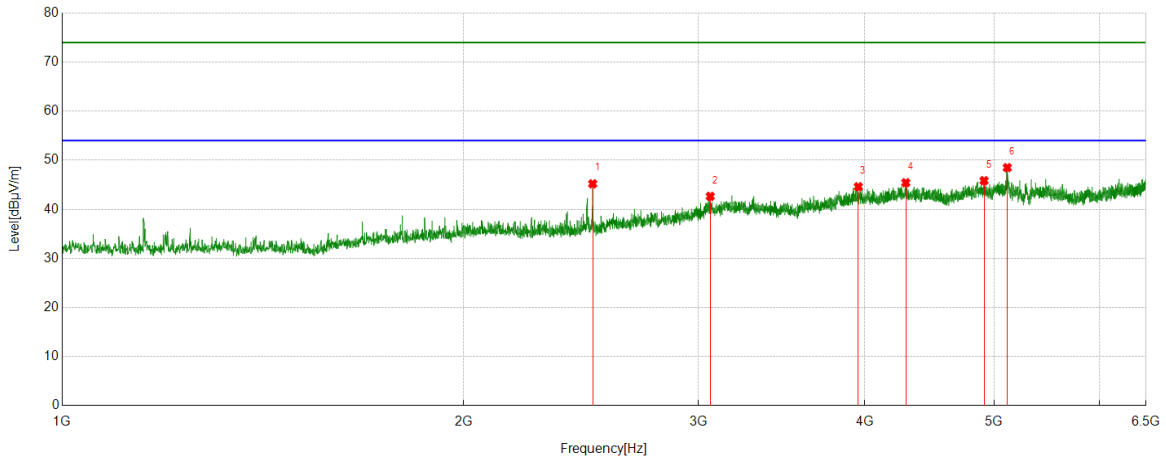


No.	Frequency	Reading Level	Correct Factor	Result	Limit	Margin	Remark
	(MHz)	(dBuV/m)	(dB)	(dBuV/m)	(dBuV/m)	(dB)	
1	1889.8767	44.54	-3.27	41.27	74.00	-32.73	peak
2	2331.1479	44.73	-2.51	42.22	74.00	-31.78	peak
3	2484.5538	44.65	-2.04	42.61	74.00	-31.39	peak
4	3259.5288	40.19	2.26	42.45	74.00	-31.55	peak
5	4293.0326	39.69	5.64	45.33	74.00	-28.67	peak
6	4778.9199	40.22	6.27	46.49	74.00	-27.51	peak

- Remark: 1. Measurement = Reading Level + Correct Factor.
 2. If Peak Result complies with AV limit, AV Result is deemed to comply with AV limit.
 3. Test setup: RBW: 1 MHz, VBW: 3 MHz, Sweep time: auto.
 4. Peak: Peak detector.
 5. AVG: VBW refer to section 6.2.
 6. For below 6.5GHz part, filter losses were only considered in the spurious frequency bands and the authorized band were not corrected for Band Reject Filter losses.
 The proper operation of the transmitter prior to adding the filter to the measurement chain.
 7. Only the worst case emission was recorded, if it complies with the limit, the other emissions deemed to comply with the limit.



Test Mode	Channel	Polarization	Verdict
11AC80	5210	Horizontal	PASS

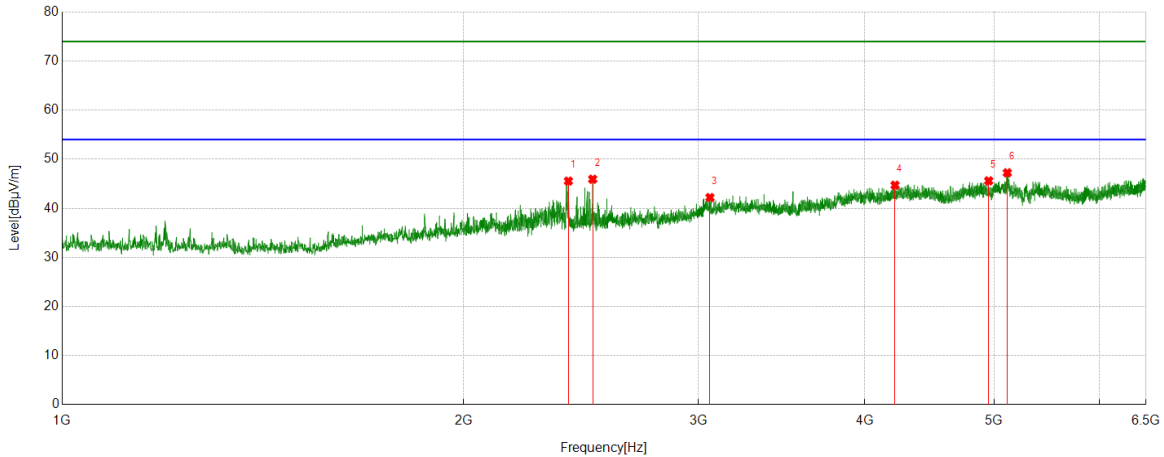


No.	Frequency	Reading Level	Correct Factor	Result	Limit	Margin	Remark
	(MHz)	(dBuV/m)	(dB)	(dBuV/m)	(dBuV/m)	(dB)	
1	2499.8333	46.84	-1.64	45.20	74.00	-28.80	peak
2	3062.7292	39.81	2.83	42.64	74.00	-31.36	peak
3	3954.4394	39.44	5.16	44.60	74.00	-29.40	peak
4	4292.4214	39.33	6.09	45.42	74.00	-28.58	peak
5	4913.9904	38.84	7.00	45.84	74.00	-28.16	peak
6	5115.0683	41.92	6.57	48.49	74.00	-25.51	peak

- Remark: 1. Measurement = Reading Level + Correct Factor.
 2. If Peak Result complies with AV limit, AV Result is deemed to comply with AV limit.
 3. Test setup: RBW: 1 MHz, VBW: 3 MHz, Sweep time: auto.
 4. Peak: Peak detector.
 5. AVG: VBW refer to section 6.2.
 6. For below 6.5GHz part, filter losses were only considered in the spurious frequency bands and the authorized band were not corrected for Band Reject Filter losses.
 The proper operation of the transmitter prior to adding the filter to the measurement chain.
 7. Only the worst case emission was recorded, if it complies with the limit, the other emissions deemed to comply with the limit.



Test Mode	Channel	Polarization	Verdict
11AC80	5210	Vertical	PASS

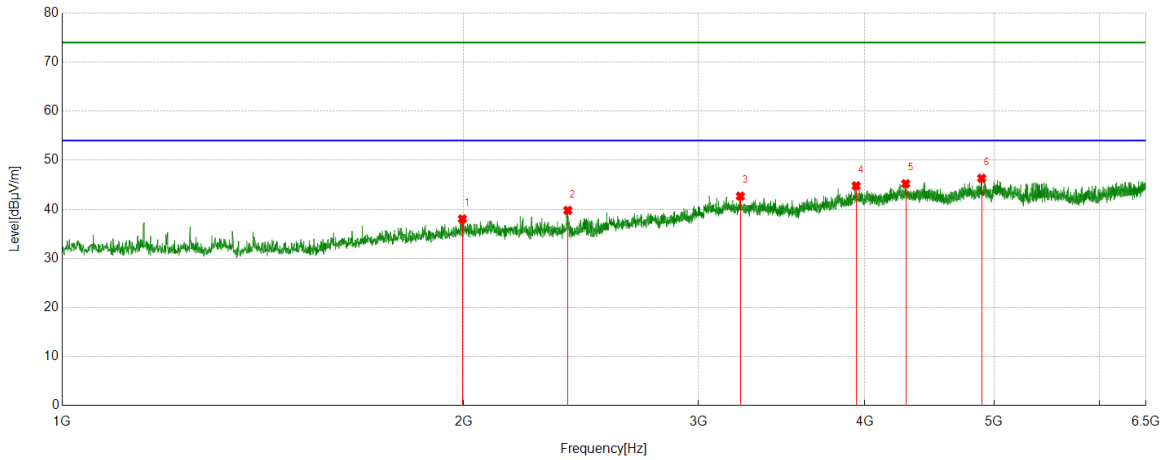


No.	Frequency	Reading Level	Correct Factor	Result	Limit	Margin	Remark
	(MHz)	(dBuV/m)	(dB)	(dBuV/m)	(dBuV/m)	(dB)	
1	2397.1552	48.02	-2.47	45.55	74.00	-28.45	peak
2	2499.8333	47.57	-1.64	45.93	74.00	-28.07	peak
3	3060.8957	39.31	2.89	42.20	74.00	-31.80	peak
4	4213.5793	38.91	5.80	44.71	74.00	-29.29	peak
5	4953.7171	38.84	6.76	45.60	74.00	-28.40	peak
6	5115.0683	40.67	6.57	47.24	74.00	-26.76	peak

- Remark: 1. Measurement = Reading Level + Correct Factor.
 2. If Peak Result complies with AV limit, AV Result is deemed to comply with AV limit.
 3. Test setup: RBW: 1 MHz, VBW: 3 MHz, Sweep time: auto.
 4. Peak: Peak detector.
 5. AVG: VBW refer to section 6.2.
 6. For below 6.5GHz part, filter losses were only considered in the spurious frequency bands and the authorized band were not corrected for Band Reject Filter losses.
 The proper operation of the transmitter prior to adding the filter to the measurement chain.
 7. Only the worst case emission was recorded, if it complies with the limit, the other emissions deemed to comply with the limit.



Test Mode	Channel	Polarization	Verdict
11AC80	5290	Horizontal	PASS

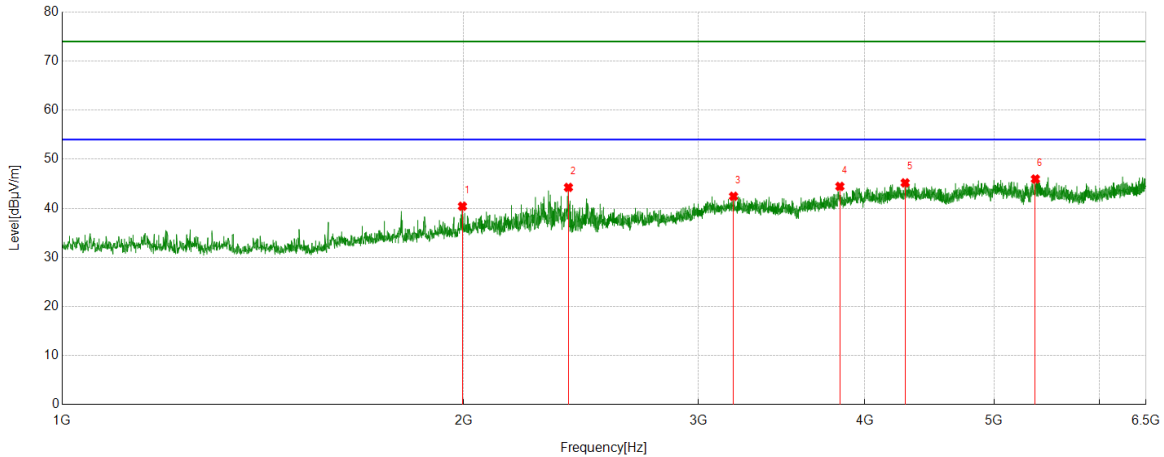


No.	Frequency	Reading Level	Correct Factor	Result	Limit	Margin	Remark
	(MHz)	(dBuV/m)	(dB)	(dBuV/m)	(dBuV/m)	(dB)	
1	1996.2218	40.36	-2.32	38.04	74.00	-35.96	peak
2	2394.7105	42.21	-2.43	39.78	74.00	-34.22	peak
3	3225.914	39.75	2.93	42.68	74.00	-31.32	peak
4	3940.3823	39.22	5.56	44.78	74.00	-29.22	peak
5	4292.4214	39.13	6.09	45.22	74.00	-28.78	peak
6	4893.8215	39.41	6.92	46.33	74.00	-27.67	peak

- Remark: 1. Measurement = Reading Level + Correct Factor.
 2. If Peak Result complies with AV limit, AV Result is deemed to comply with AV limit.
 3. Test setup: RBW: 1 MHz, VBW: 3 MHz, Sweep time: auto.
 4. Peak: Peak detector.
 5. AVG: VBW refer to section 6.2.
 6. For below 6.5GHz part, filter losses were only considered in the spurious frequency bands and the authorized band were not corrected for Band Reject Filter losses.
 The proper operation of the transmitter prior to adding the filter to the measurement chain.
 7. Only the worst case emission was recorded, if it complies with the limit, the other emissions deemed to comply with the limit.



Test Mode	Channel	Polarization	Verdict
11AC80	5290	Vertical	PASS

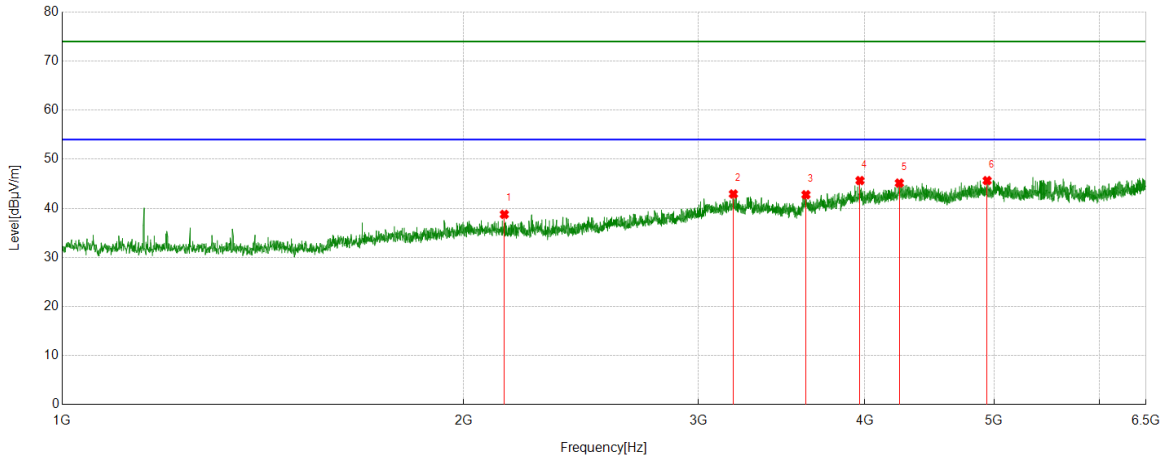


No.	Frequency	Reading Level	Correct Factor	Result	Limit	Margin	Remark
	(MHz)	(dBuV/m)	(dB)	(dBuV/m)	(dBuV/m)	(dB)	
1	1996.2218	42.74	-2.32	40.42	74.00	-33.58	peak
2	2397.1552	46.73	-2.47	44.26	74.00	-29.74	peak
3	3188.0209	39.70	2.75	42.45	74.00	-31.55	peak
4	3830.9812	39.41	5.05	44.46	74.00	-29.54	peak
5	4288.1431	39.06	6.13	45.19	74.00	-28.81	peak
6	5369.3188	38.51	7.46	45.97	74.00	-28.03	peak

- Remark: 1. Measurement = Reading Level + Correct Factor.
 2. If Peak Result complies with AV limit, AV Result is deemed to comply with AV limit.
 3. Test setup: RBW: 1 MHz, VBW: 3 MHz, Sweep time: auto.
 4. Peak: Peak detector.
 5. AVG: VBW refer to section 6.2.
 6. For below 6.5GHz part, filter losses were only considered in the spurious frequency bands and the authorized band were not corrected for Band Reject Filter losses.
 The proper operation of the transmitter prior to adding the filter to the measurement chain.
 7. Only the worst case emission was recorded, if it complies with the limit, the other emissions deemed to comply with the limit.



Test Mode	Channel	Polarization	Verdict
11AC80	5530	Horizontal	PASS

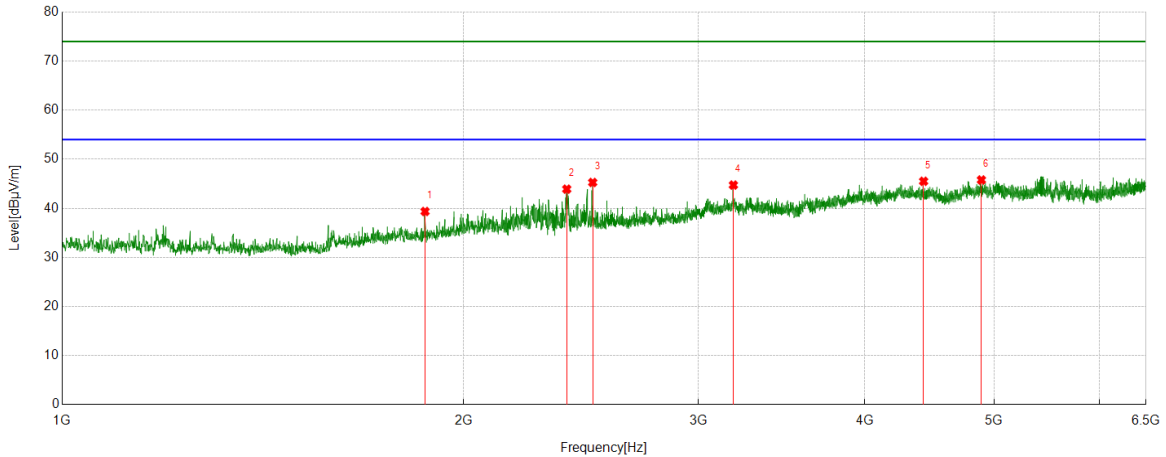


No.	Frequency	Reading Level	Correct Factor	Result	Limit	Margin	Remark
	(MHz)	(dBuV/m)	(dB)	(dBuV/m)	(dBuV/m)	(dB)	
1	2145.9607	41.11	-2.34	38.77	74.00	-35.23	peak
2	3187.4097	39.80	3.12	42.92	74.00	-31.08	peak
3	3612.7903	39.14	3.63	42.77	74.00	-31.23	peak
4	3966.0518	40.34	5.31	45.65	74.00	-28.35	peak
5	4245.3606	38.71	6.43	45.14	74.00	-28.86	peak
6	4940.2711	38.73	6.92	45.65	74.00	-28.35	peak

- Remark: 1. Measurement = Reading Level + Correct Factor.
 2. If Peak Result complies with AV limit, AV Result is deemed to comply with AV limit.
 3. Test setup: RBW: 1 MHz, VBW: 3 MHz, Sweep time: auto.
 4. Peak: Peak detector.
 5. AVG: VBW refer to section 6.2.
 6. For below 6.5GHz part, filter losses were only considered in the spurious frequency bands and the authorized band were not corrected for Band Reject Filter losses.
 The proper operation of the transmitter prior to adding the filter to the measurement chain.
 7. Only the worst case emission was recorded, if it complies with the limit, the other emissions deemed to comply with the limit.



Test Mode	Channel	Polarization	Verdict
11AC80	5530	Vertical	PASS

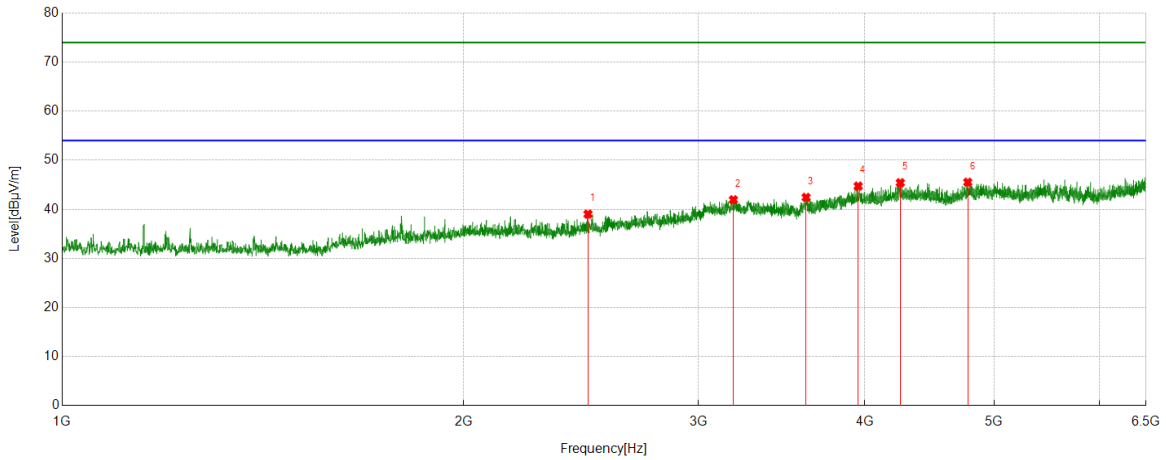


No.	Frequency	Reading Level	Correct Factor	Result	Limit	Margin	Remark
	(MHz)	(dBuV/m)	(dB)	(dBuV/m)	(dBuV/m)	(dB)	
1	1871.5413	42.74	-3.38	39.36	74.00	-34.64	peak
2	2390.4323	46.35	-2.44	43.91	74.00	-30.09	peak
3	2499.8333	46.84	-1.57	45.27	74.00	-28.73	peak
4	3187.4097	41.62	3.12	44.74	74.00	-29.26	peak
5	4426.8808	39.60	5.91	45.51	74.00	-28.49	peak
6	4891.3768	39.01	6.77	45.78	74.00	-28.22	peak

- Remark: 1. Measurement = Reading Level + Correct Factor.
 2. If Peak Result complies with AV limit, AV Result is deemed to comply with AV limit.
 3. Test setup: RBW: 1 MHz, VBW: 3 MHz, Sweep time: auto.
 4. Peak: Peak detector.
 5. AVG: VBW refer to section 6.2.
 6. For below 6.5GHz part, filter losses were only considered in the spurious frequency bands and the authorized band were not corrected for Band Reject Filter losses.
 The proper operation of the transmitter prior to adding the filter to the measurement chain.
 7. Only the worst case emission was recorded, if it complies with the limit, the other emissions deemed to comply with the limit.



Test Mode	Channel	Polarization	Verdict
11AC80	5610	Horizontal	PASS

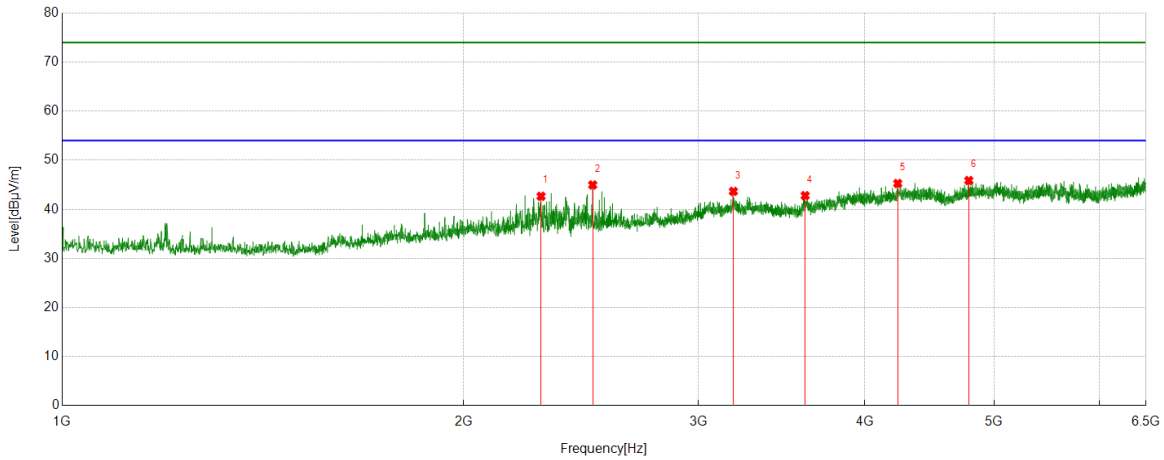


No.	Frequency	Reading Level	Correct Factor	Result	Limit	Margin	Remark
	(MHz)	(dBuV/m)	(dB)	(dBuV/m)	(dBuV/m)	(dB)	
1	2479.6644	40.96	-1.94	39.02	74.00	-34.98	peak
2	3187.4097	38.81	3.12	41.93	74.00	-32.07	peak
3	3614.0127	38.82	3.61	42.43	74.00	-31.57	peak
4	3953.8282	39.40	5.33	44.73	74.00	-29.27	peak
5	4252.0836	39.12	6.29	45.41	74.00	-28.59	peak
6	4777.6975	39.17	6.34	45.51	74.00	-28.49	peak

- Remark: 1. Measurement = Reading Level + Correct Factor.
 2. If Peak Result complies with AV limit, AV Result is deemed to comply with AV limit.
 3. Test setup: RBW: 1 MHz, VBW: 3 MHz, Sweep time: auto.
 4. Peak: Peak detector.
 5. AVG: VBW refer to section 6.2.
 6. For below 6.5GHz part, filter losses were only considered in the spurious frequency bands and the authorized band were not corrected for Band Reject Filter losses.
 The proper operation of the transmitter prior to adding the filter to the measurement chain.
 7. Only the worst case emission was recorded, if it complies with the limit, the other emissions deemed to comply with the limit.



Test Mode	Channel	Polarization	Verdict
11AC80	5610	Vertical	PASS

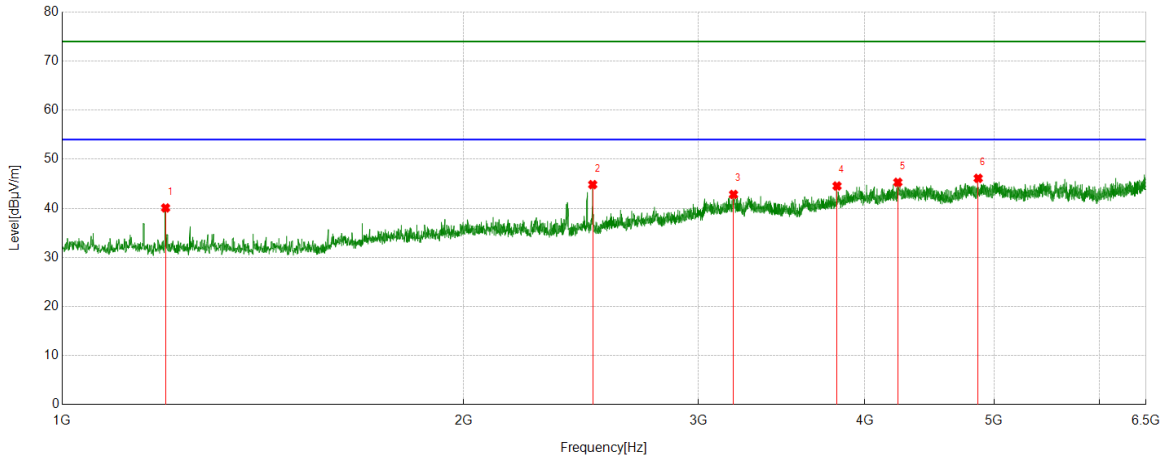


No.	Frequency	Reading Level	Correct Factor	Result	Limit	Margin	Remark
	(MHz)	(dBuV/m)	(dB)	(dBuV/m)	(dBuV/m)	(dB)	
1	2286.5318	44.86	-2.19	42.67	74.00	-31.33	peak
2	2499.8333	46.54	-1.57	44.97	74.00	-29.03	peak
3	3187.4097	40.54	3.12	43.66	74.00	-30.34	peak
4	3607.9009	39.12	3.67	42.79	74.00	-31.21	peak
5	4233.137	39.16	6.12	45.28	74.00	-28.72	peak
6	4786.254	39.26	6.61	45.87	74.00	-28.13	peak

- Remark: 1. Measurement = Reading Level + Correct Factor.
 2. If Peak Result complies with AV limit, AV Result is deemed to comply with AV limit.
 3. Test setup: RBW: 1 MHz, VBW: 3 MHz, Sweep time: auto.
 4. Peak: Peak detector.
 5. AVG: VBW refer to section 6.2.
 6. For below 6.5GHz part, filter losses were only considered in the spurious frequency bands and the authorized band were not corrected for Band Reject Filter losses.
 The proper operation of the transmitter prior to adding the filter to the measurement chain.
 7. Only the worst case emission was recorded, if it complies with the limit, the other emissions deemed to comply with the limit.



Test Mode	Channel	Polarization	Verdict
11AC80	5690	Horizontal	PASS

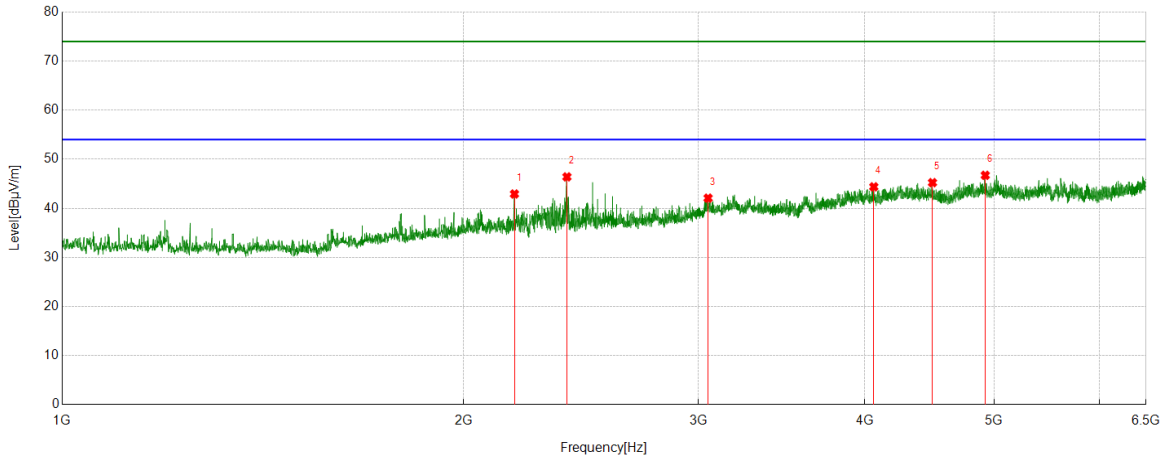


No.	Frequency	Reading Level	Correct Factor	Result	Limit	Margin	Remark
	(MHz)	(dBuV/m)	(dB)	(dBuV/m)	(dBuV/m)	(dB)	
1	1195.5773	46.21	-6.13	40.08	74.00	-33.92	peak
2	2499.8333	46.40	-1.57	44.83	74.00	-29.17	peak
3	3188.0209	39.70	3.13	42.83	74.00	-31.17	peak
4	3812.0347	40.14	4.41	44.55	74.00	-29.45	peak
5	4234.3594	39.11	6.19	45.30	74.00	-28.70	peak
6	4864.4849	39.45	6.66	46.11	74.00	-27.89	peak

- Remark: 1. Measurement = Reading Level + Correct Factor.
 2. If Peak Result complies with AV limit, AV Result is deemed to comply with AV limit.
 3. Test setup: RBW: 1 MHz, VBW: 3 MHz, Sweep time: auto.
 4. Peak: Peak detector.
 5. AVG: VBW refer to section 6.2.
 6. For below 6.5GHz part, filter losses were only considered in the spurious frequency bands and the authorized band were not corrected for Band Reject Filter losses.
 The proper operation of the transmitter prior to adding the filter to the measurement chain.
 7. Only the worst case emission was recorded, if it complies with the limit, the other emissions deemed to comply with the limit.



Test Mode	Channel	Polarization	Verdict
11AC80	5690	Vertical	PASS

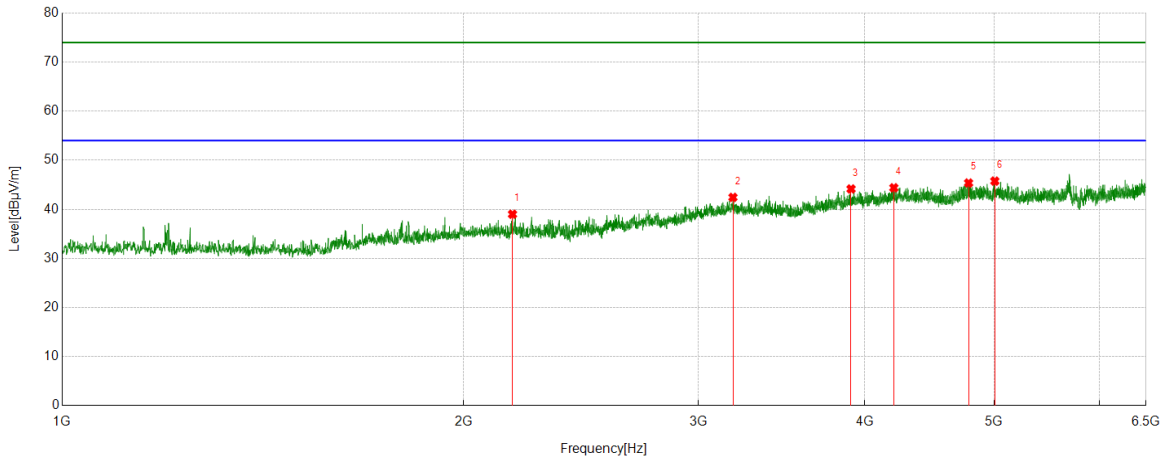


No.	Frequency	Reading Level	Correct Factor	Result	Limit	Margin	Remark
	(MHz)	(dBuV/m)	(dB)	(dBuV/m)	(dBuV/m)	(dB)	
1	2183.8538	45.42	-2.50	42.92	74.00	-31.08	peak
2	2391.0434	48.86	-2.45	46.41	74.00	-27.59	peak
3	3051.1168	39.11	2.97	42.08	74.00	-31.92	peak
4	4062.0069	39.03	5.35	44.38	74.00	-29.62	peak
5	4495.3328	39.26	5.97	45.23	74.00	-28.77	peak
6	4924.3805	39.68	7.05	46.73	74.00	-27.27	peak

- Remark: 1. Measurement = Reading Level + Correct Factor.
 2. If Peak Result complies with AV limit, AV Result is deemed to comply with AV limit.
 3. Test setup: RBW: 1 MHz, VBW: 3 MHz, Sweep time: auto.
 4. Peak: Peak detector.
 5. AVG: VBW refer to section 6.2.
 6. For below 6.5GHz part, filter losses were only considered in the spurious frequency bands and the authorized band were not corrected for Band Reject Filter losses.
 The proper operation of the transmitter prior to adding the filter to the measurement chain.
 7. Only the worst case emission was recorded, if it complies with the limit, the other emissions deemed to comply with the limit.



Test Mode	Channel	Polarization	Verdict
11AC80	5775	Horizontal	PASS

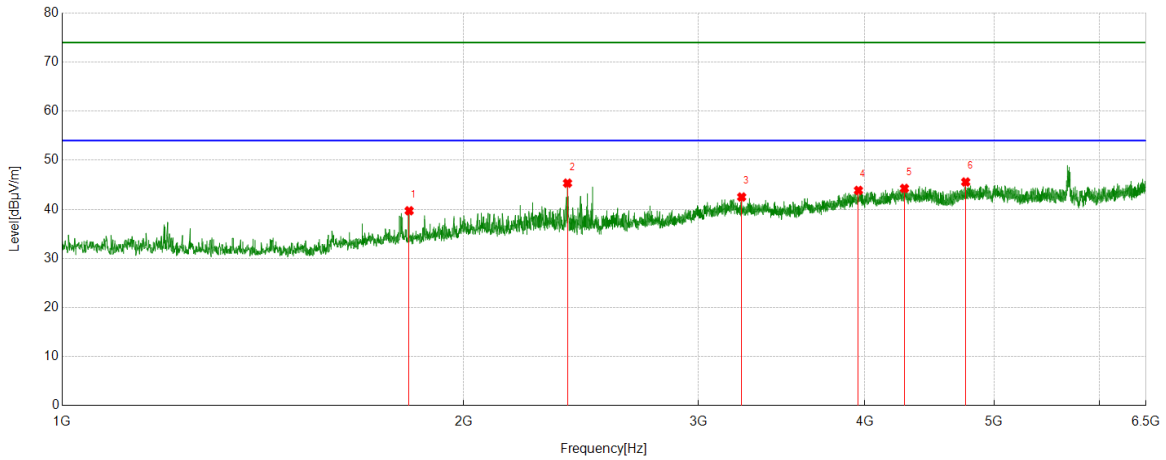


No.	Frequency	Reading Level	Correct Factor	Result	Limit	Margin	Remark
	(MHz)	(dBuV/m)	(dB)	(dBuV/m)	(dBuV/m)	(dB)	
1	2176.5196	41.41	-2.41	39.00	74.00	-35.00	peak
2	3184.965	39.82	2.62	42.44	74.00	-31.56	peak
3	3905.5451	39.60	4.55	44.15	74.00	-29.85	peak
4	4205.0228	38.70	5.69	44.39	74.00	-29.61	peak
5	4784.4205	38.92	6.44	45.36	74.00	-28.64	peak
6	5006.2785	38.97	6.78	45.75	74.00	-28.25	peak

- Remark: 1. Measurement = Reading Level + Correct Factor.
 2. If Peak Result complies with AV limit, AV Result is deemed to comply with AV limit.
 3. Test setup: RBW: 1 MHz, VBW: 3 MHz, Sweep time: auto.
 4. Peak: Peak detector.
 5. AVG: VBW refer to section 6.2.
 6. For below 6.5GHz part, filter losses were only considered in the spurious frequency bands and the authorized band were not corrected for Band Reject Filter losses.
 The proper operation of the transmitter prior to adding the filter to the measurement chain.
 7. Only the worst case emission was recorded, if it complies with the limit, the other emissions deemed to comply with the limit.



Test Mode	Channel	Polarization	Verdict
11AC80	5775	Vertical	PASS



No.	Frequency	Reading Level	Correct Factor	Result	Limit	Margin	Remark
	(MHz)	(dBuV/m)	(dB)	(dBuV/m)	(dBuV/m)	(dB)	
1	1820.8134	43.47	-3.76	39.71	74.00	-34.29	peak
2	2393.4882	47.86	-2.53	45.33	74.00	-28.67	peak
3	3233.2481	39.94	2.57	42.51	74.00	-31.49	peak
4	3955.6617	38.82	5.04	43.86	74.00	-30.14	peak
5	4282.6425	38.58	5.68	44.26	74.00	-29.74	peak
6	4760.5845	38.93	6.64	45.57	74.00	-28.43	peak

- Remark: 1. Measurement = Reading Level + Correct Factor.
 2. If Peak Result complies with AV limit, AV Result is deemed to comply with AV limit.
 3. Test setup: RBW: 1 MHz, VBW: 3 MHz, Sweep time: auto.
 4. Peak: Peak detector.
 5. AVG: VBW refer to section 6.2.
 6. For below 6.5GHz part, filter losses were only considered in the spurious frequency bands and the authorized band were not corrected for Band Reject Filter losses.
 The proper operation of the transmitter prior to adding the filter to the measurement chain.
 7. Only the worst case emission was recorded, if it complies with the limit, the other emissions deemed to comply with the limit.