

TOP EQUIPMENT DRAWING



Point Name X Y Net Name

J100-1 VBATBB 12.6 6.55 1
 J100-2 GND 9.45 6.55 1
 J100-3 GND 6.3 6.55 1
 J100-4 GND 9.45 10.8 1
 J101-1 VCHG 8.8 0.55 1
 J101-2 GND 6.9 0.55 1
 J200-1 1SIMCLK -9.68 15.5 1
 J200-2 1SIMIO -9.68 28.1 1
 J200-3 1SIMRST -7.14 15.5 1
 J200-4 1VSIM -7.14 28.1 1
 J200-5 1VSIM -4.6 15.5 1
 J200-6 GND -4.6 28.1 1
 J200-7 GND -15.95 19.85 1
 J200-8 GND -15.95 22.55 1
 J200-9 GND -1.05 19.85 1
 J200-10 GND -1.05 22.55 1
 J201-1 2SIMCLK 7.32 15.5 1
 J201-2 2SIMIO 7.32 28.1 1
 J201-3 2SIMRST 9.86 15.5 1
 J201-4 2VSIM 9.86 28.1 1
 J201-5 2VSIM 12.4 15.5 1
 J201-6 GND 12.4 28.1 1
 J201-7 GND 1.05 19.85 1
 J201-8 GND 1.05 22.55 1
 J201-9 GND 15.95 19.85 1
 J201-10 GND 15.95 22.55 1
 J202-2 GND -7.25 49.3 1
 J202-3 TFDOUT -7.25 48.2 1
 J202-4 VDD -7.25 47.1 1
 J202-5 TFCLK -7.25 48 1
 J202-6 GND -7.25 44.9 1
 J202-7 TFDIN -7.25 43.8 1
 J202-9 GND -4.65 54.075 1
 J202-10 GND -12.95 54.075 1
 J202-11 GND -12.95 40.325 1
 J202-12 GND -4.65 40.325 1

J400-1 URXD11 -2.5 7.85 1
 J400-2 VCHG -2.1 7.85 1
 J400-3 UTXD11 -1.7 7.85 1
 J400-5 UNNAMED16CONN14PSI1246A4 -0.9 7.85 1
 J400-7 UNNAMED16CONN14PSI1246A -0.1 7.85 1
 J400-8 UNNAMED16CONN14PSI1246A5 0.3 7.85 1
 J400-9 UNNAMED16CONN14PSI1246A1 0.7 7.85 1
 J400-10 GND 1.1 7.85 1
 J400-11 GND 3.75 6.05 1
 J400-14 GND -5.15 6.05 1
 TP300-1 UNNAMED11BLIND1P197A1 8.5 91.5 1
 TP301-1 GND 12 91.5 1
 TP400-1 UNNAMED12PC04021189A -15.75 85 1
 TP401-1 GND -15.75 88.4 1
 J100-1 VBATBB 12.6 6.55 1
 TP512-1 FM_ANT 16.2 5.76 1

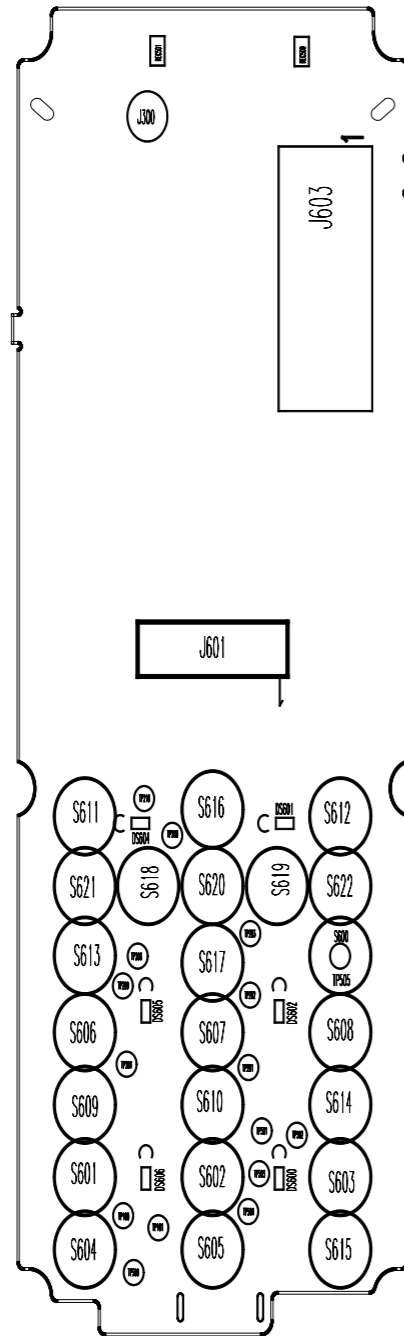
SCALE 2



DRAWING A3H A 27/09/2008 VER DATE	NAME	DATE	NAME	DATE	
	MODIFIED	01/04/2011	CHECKED	01/04/2011	
	LIBELLE			NINGBO SMN ELECTRONICS CO. LTD.	
DENOMINATION			SHEET		
ELEC BOARD MMI GL168D V01			1/2		
R.FAB/P.N.		SIZE	DRAWING NUMBER		
NINGBO SMN		A3	TYPE PART VERS.		

BOTTOM EQUIPMENT DRAWING

UNPLATED CUTTING



- J300-1 UNNAMED11ETO1LE21202B 5.87 86.26 4
- J300-2 GND 7.27 86.26 4
- J601-1 GND -6 48 4
- J601-2 GND -5.2 48 4
- J601-4 GND -3.6 48 4
- J601-5 VDD -2.8 48 4
- J601-6 LcdrSTB -2 48 4
- J601-7 LCDSA0 -1.2 48 4
- J601-8 LCDSCLK -0.4 48 4
- J601-9 LCSDA 0.4 48 4
- J601-10 LCDSCEO 1.2 48 4
- J601-11 GND 2 48 4
- J601-12 VDD 2.8 48 4
- J601-13 VBATBB 3.6 48 4
- J601-14 LEDK1 4.4 48 4
- J601-15 LEDK2 5.2 48 4
- J601-16 GND 6 48 4
- J602-1 GND -6 58.24 4
- J602-2 GND -5.2 58.24 4
- J602-4 GND -3.6 58.24 4
- J602-5 VDD -2.8 58.24 4
- J602-6 LcdrSTB -2 58.24 4
- J602-7 LCDSA0 -1.2 58.24 4
- J602-8 LCDSCLK -0.4 58.24 4
- J602-9 LCSDA 0.4 58.24 4
- J602-10 LCDSCEO 1.2 58.24 4
- J602-11 GND 2 58.24 4
- J602-12 VDD 2.8 58.24 4
- J602-13 VBATBB 3.6 58.24 4
- J602-14 LEDK1 4.4 58.24 4
- J602-15 LEDK2 5.2 58.24 4
- J602-16 GND 6 58.24 4

- J603-2 GND -12.45 81.9 4
- J603-3 I2CSDA -12.45 81.2 4
- J603-4 I2CSCL -12.45 80.5 4
- J603-5 UNNAMED15CONN24PS1210A -12.45 79.8 4
- J603-6 CAMVREF -12.45 79.1 4
- J603-7 CAMPDN -12.45 78.4 4
- J603-8 CAMHREF -12.45 77.7 4
- J603-10 CAMDAT7 -12.45 76.3 4
- J603-11 CAMCLK -12.45 75.6 4
- J603-12 CAMDAT6 -12.45 74.9 4
- J603-13 GND -12.45 74.2 4
- J603-14 CAMDAT5 -12.45 73.5 4
- J603-15 CAMCLK -12.45 72.8 4
- J603-16 CAMDAT4 -12.45 72.1 4
- J603-17 CAMDAT0 -12.45 71.4 4
- J603-18 CAMDAT3 -12.45 70.7 4
- J603-19 CAMDAT1 -12.45 70 4
- J603-20 CAMDAT2 -12.45 69.3 4
- J603-21 CAM28V -12.45 68.6 4
- J603-22 CAM18V -12.45 67.9 4
- J603-23 GND -12.45 67.2 4
- J603-24 CAM28V -12.45 66.5 4
- TP100-1 VBATBB 8.05 7.33 4
- TP101-1 GND 4.88 6.46 4
- TP200-1 ISIMIO 3.63 34.64 4
- TP201-1 ISIMRST -3.23 17.97 4
- TP202-1 ISIMCLK -3.38 23.17 4
- TP203-1 IVSIM -3.4 27.58 4
- TP204-1 2SIMRST 7.74 18.21 4
- TP206-1 2SIMCLK 6.74 25.97 4
- TP209-1 2VSIM 8.08 23.83 4
- TP210-1 2SIMIO 6.16 37.28 4
- TP501-1 MICBIASP -4.43 13.42 4
- TP502-1 MICP01 -7.59 13.11 4
- TP503-1 URXD11 -4.2 10.35 4
- TP504-1 UTXD11 -3.21 7.83 4
- TP505-1 PWRKEY -11.48 25.97 4
- TP509-1 VCHG 7.1 3.25 4

SCALE 2

DRAWING A3H	MODIFIED	NAME	DATE	CHECKED	NAME	DATE
			01/04/2011			01/04/2011
	LIBELLE					NINGBO SMN ELECTRONICS CO. LTD.
	DENOMINATION					
ELEC BOARD MMI GL168D V01					SHEET	1/2
R.FAB/P.N.			SIZE			
NINGBO SMN			A3	DRAWING NUMBER	TYPE	PART
VER	DATE					
A	27/09/2009					