



TOSHIBA COMBINE FLASH

TV00570002CDGB 32M+128M (2.8V) 179135065

TV00560002EDGB 32M+64M (2.8V)

SPANSION COMBINE FLASH

S71PL127NB0HHW4U 32M+128M (2.8V)

S71GL064NB0FW0Z0 32M+64M (2.8V)

S71GL032NB0FW0P0 8M+32M (2.8V)

SAMSUNG COMBINE FLASH

K5L2731CAA-D770 32M+128M (2.8V)

K5L6331CAA-D270 32M+64M (2.8V) 178009336

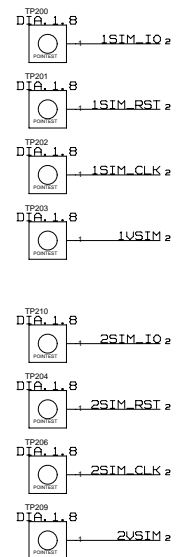
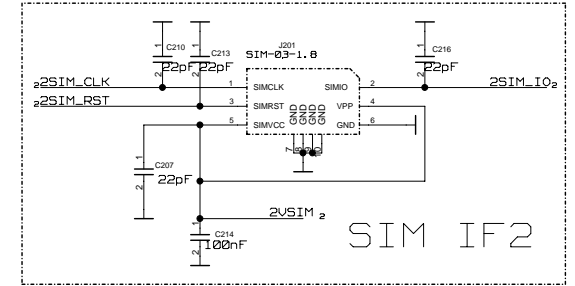
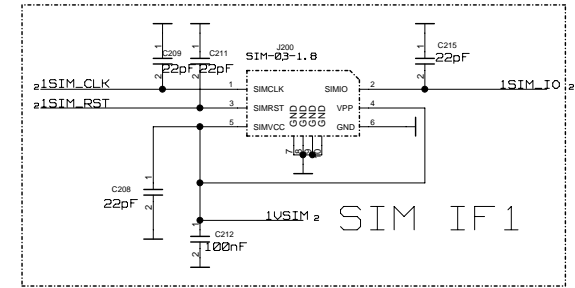
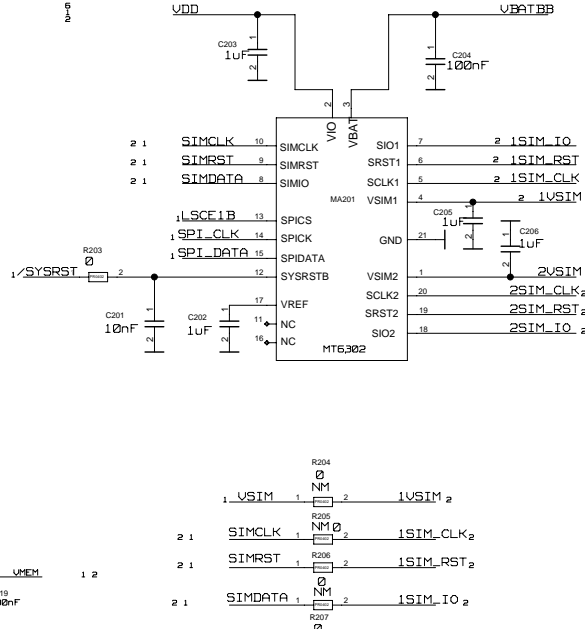
SST COMBINE FLASH

SST34HF32A4-70-4E-L1PE 16M+32M(2.8V)

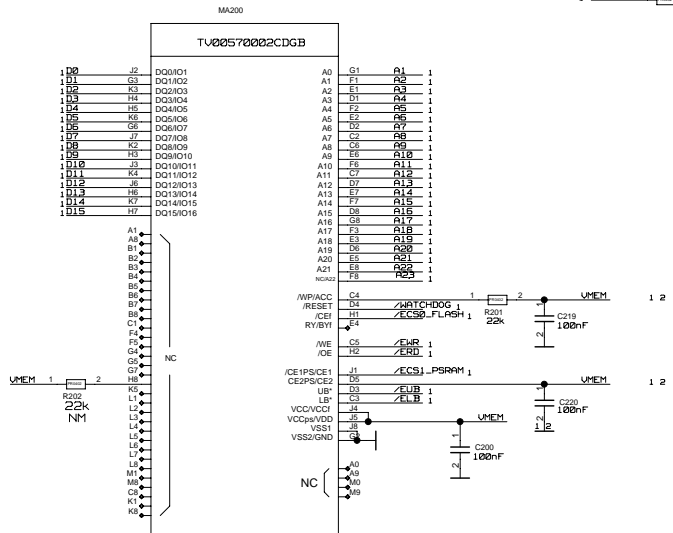
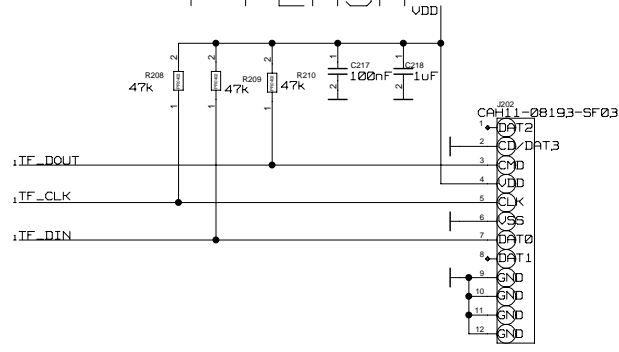
SST34HF32B2-70-4E-L1PE 8M+32M(2.8V)

SST34HF32B4-70-4E-L1PE 8M+32M(2.8V)

SIM SELECT



T-FLASH

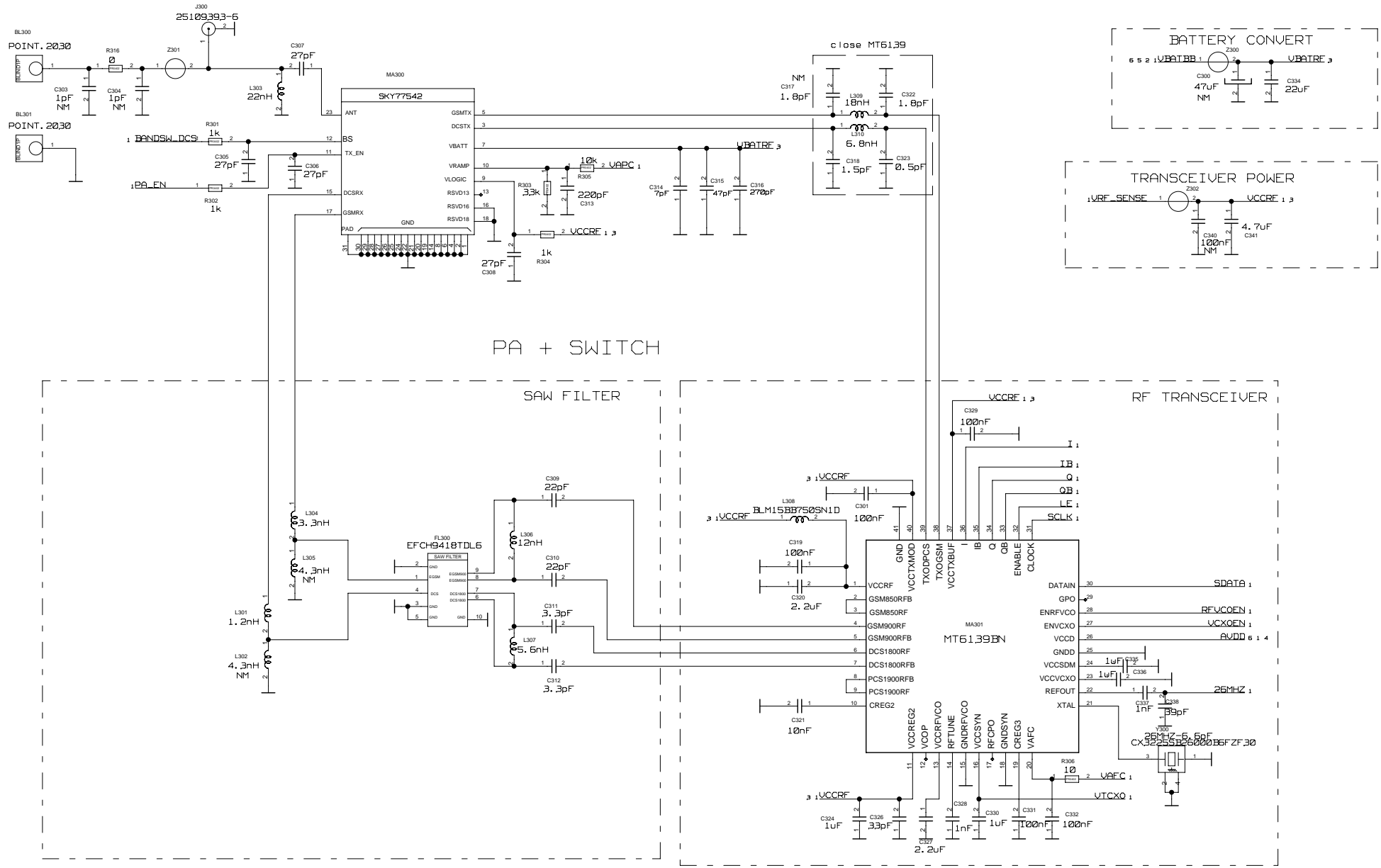


H8=CIOF@SST FLASH  
H8=1 DIO=16BITS  
R207 MOUNTED

DRAWING:  
BOARD GL168D MM1 V01  
board g1168d mm1 v01  
LAST\_MODIFIED=Thu Sep 08 14:14:02 2011

ALL RIGHTS RESERVED.REPRODUCTION AND DISCLOSURE PROHIBITED

MODIFIED	NAME	DATE	CHECKED	NAME	DATE
-	SCHMATIC	31/03/2011	-	SCHMATIC	31/03/2011
TITLE		MEMORY		SMN CO. LTD.	
Product Name		SCHEMATIC BOARD GL168D MM1 V01		PAGE/SHEET 2 / 6	
P.N.		FORMAT SIZE A2		DOCUMENT NUMBER TYPE PART VERS.	

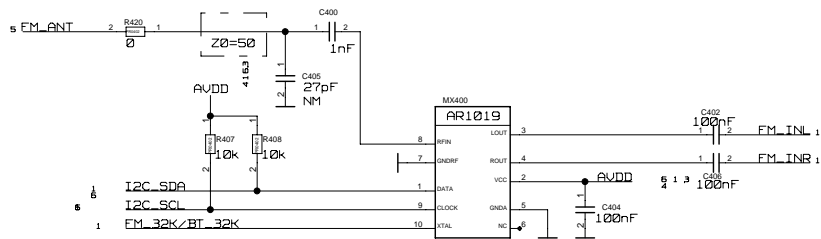


DRAWING:  
 BOARD GL168D MMI V01  
 board gl168d mm1 v01  
 LAST\_MODIFIED=Thu Sep 08 14:14:01 2011

ALL RIGHTS RESERVED.REPRODUCTION AND DISCLOSURE PROHIBITED

MODIFIED	NAME SCHEMATIC	DATE 31/03/2011	CHECKED	NAME SCHEMATIC	DATE 31/03/2011
TITLE RF		Product Name SCHEMATIC BOARD GL168D MMI V01		SMN CO. LTD.	
P.N.		FORMAT SIZE A2		PAGE/SHEET 3 / 6	
V00	3787	DOCUMENT NUMBER		TYPE	PART
VER.	DATE				VERS.

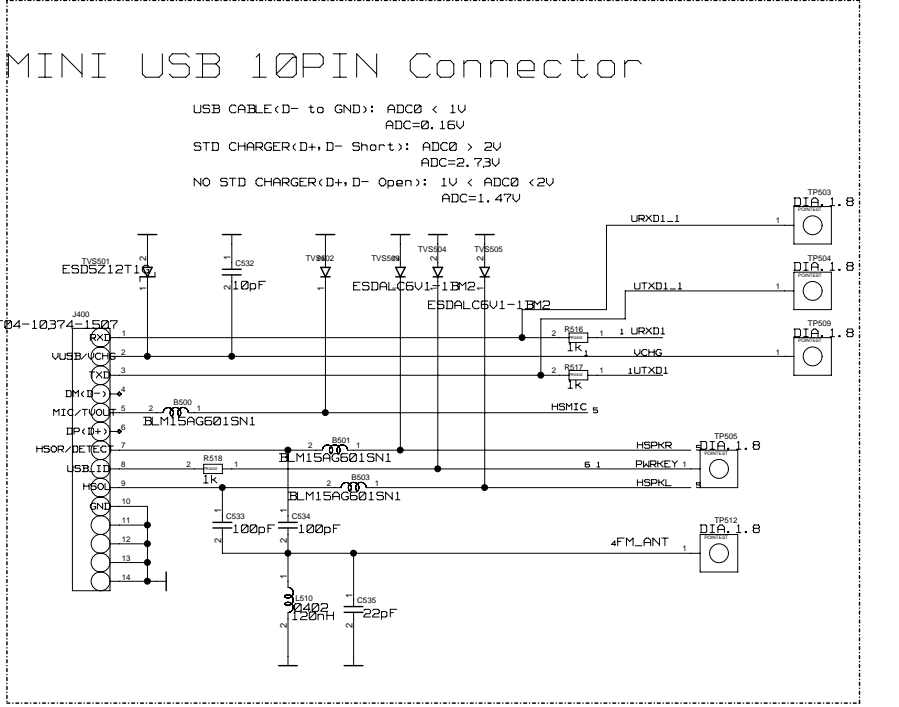
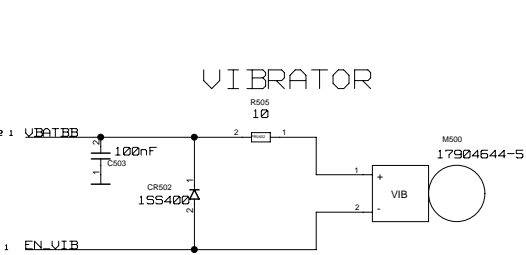
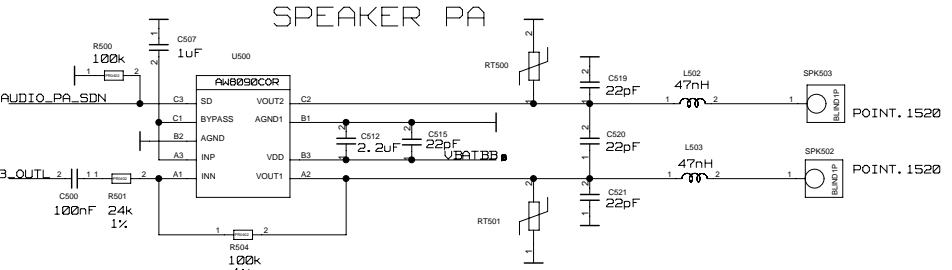
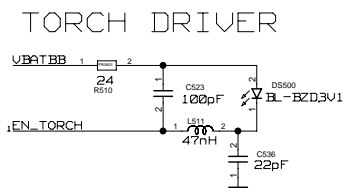
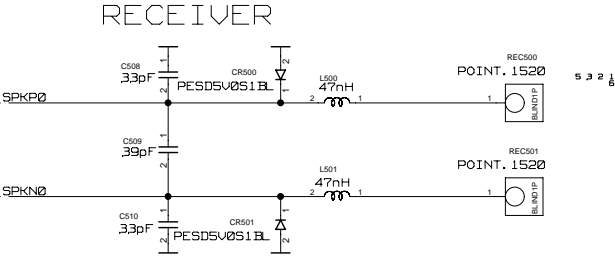
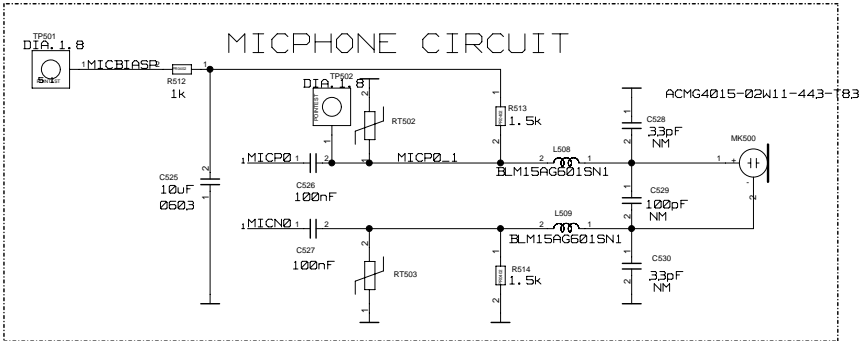
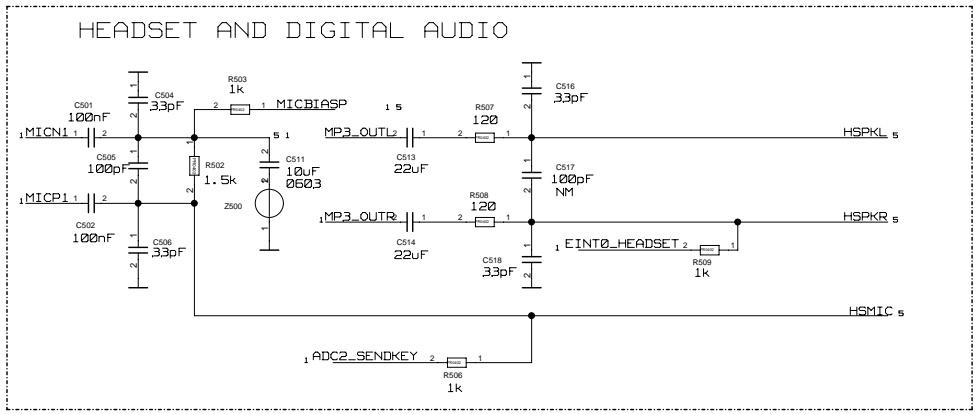
# FM RADIO



DRAWING:  
 BOARD GL168D MM1 V01  
 board g1168d mm1 v01  
 LAST\_MODIFIED=Thu Sep 08 14:14:01 2011

ALL RIGHTS RESERVED.REPRODUCTION AND DISCLOSURE PROHIBITED

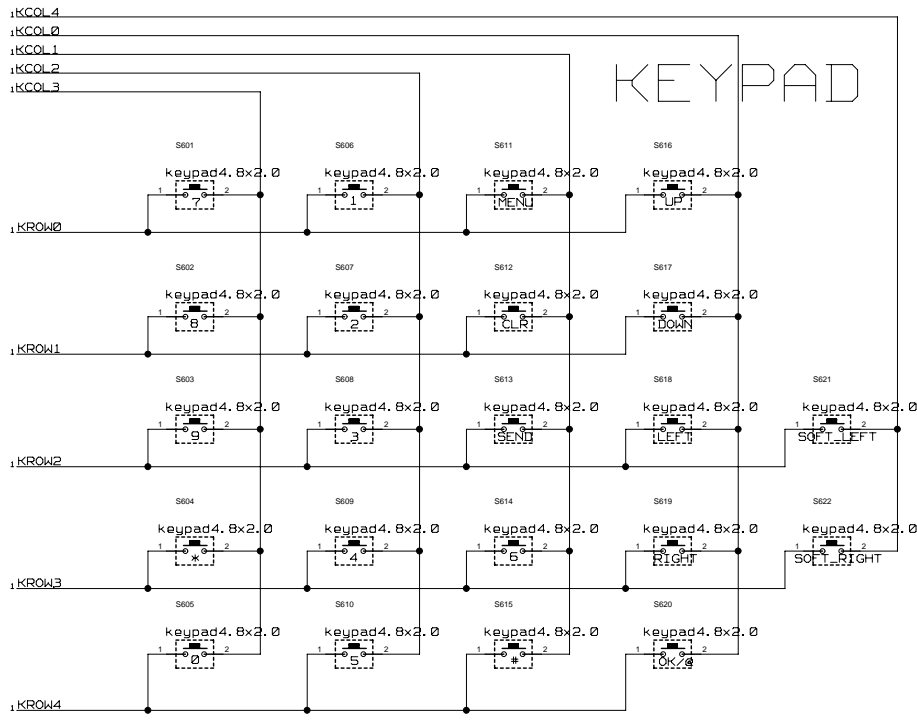
MODIFIED	NAME SCHEMATIC	DATE 31/03/2011	CHECKED	NAME SCHEMATIC	DATE 31/03/2011
TITLE FM		SMN CO. LTD.			
Product Name SCHEMATIC BOARD GL168D MM1 V01		PAGE/SHEET 4 / 6			
P.N.		FORMAT SIZE A2	DOCUMENT NUMBER	TYPE	PART
VER.	DATE				VER.



DRAWING:  
BOARD GL168D MM1 V01  
board g1168d mm1 v01  
LAST\_MODIFIED=Thu Sep 08 14:14:01 2011

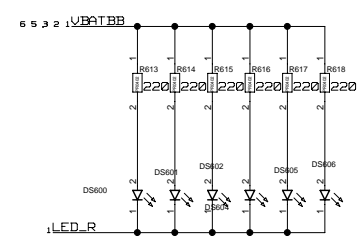
ALL RIGHTS RESERVED.REPRODUCTION AND DISCLOSURE PROHIBITED

MODIFIED	NAME SCHEMATIC	DATE 31/03/2011	CHECKED	NAME SCHEMATIC	DATE 31/03/2011
TITLE AUDIO&CONNECTER		Product Name SCHEMATIC BOARD GL168D MMI V01		SMN CO. LTD.	
P.N.		PAGE/SHEET 5/6		FORMAT SIZE A2	
V00	DATE	DOCUMENT NUMBER	TYPE	PART	VER.

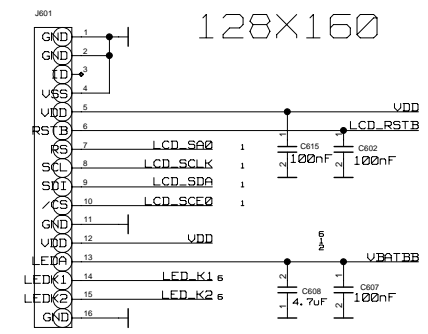


DRAWING:  
BOARD GL168D MMI V01  
board g1168d mmi v01  
LAST\_MODIFIED=Thu Sep 08 14:14:01 2011

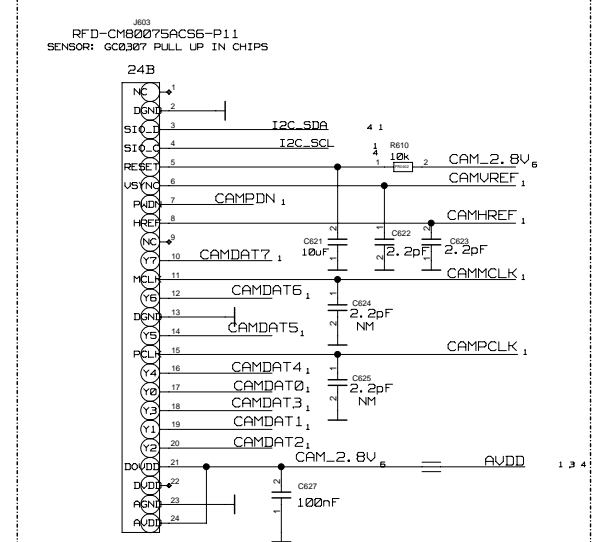
### back light



### TFT 1.77" TFT1P4910-W-E 128X160



### 0.3M Camera



MODIFIED	NAME	DATE	CHECKED	NAME	DATE
-	SCHMATIC	31/03/2011	-	SCHMATIC	31/03/2011
TITLE		Product Name		SMN CO. LTD.	
-		-		PAGE/SHEET 6 / 6	
P.N.		FORMAT SIZE		DOCUMENT NUMBER	
-		A2		TYPE PART VERS.	
V00		2707		-	
VER. DATE		-		-	

ALL RIGHTS RESERVED.REPRODUCTION AND DISCLOSURE PROHIBITED

Title: Basenet Report  
 Design: gl168d\_mmi\_fcc  
 Date: Sep 8 14:14:26 2011

Base nets and synonyms for  
 gl168d.lib, GL168D\_MMI\_FCC(@gl168d.lib, gl168d\_mmi\_fcc.sch  
 \_1)

Base Signal	Location (Zone) (dir)
1SIM_CLK	2A1 2A2 2A2 2B3
1SIM_IO	2A1 2A1 2A2 2B3
1SIM_RST	2A1 2A2 2A2 2B3
1VSIM	2A1 2A1 2A2 2B3
2SIM_CLK	2B1 2B2 2B2
2SIM_IO	2B1 2B1 2B2
2SIM_RST	2B1 2B2 2B2
2VSIM	2B1 2B1 2B2
25MHZ	1A4 3C1
A1	1C3 2B4
A2	1C3 2B4
A3	1C3 2B4
A4	1C3 2B4
A5	1C3 2B4
A6	1C3 2B4
A7	1C3 2B4
A8	1C3 2B4
A9	1C3 2B4
A10	1C3 2B4
A11	1C3 2B4
A12	1C3 2B4
A13	1C3 2B4
A14	1C3 2B4
A15	1C3 2B4
A16	1C3 2B4
A17	1C3 2B4
A18	1C4 2B4
A19	1C4 2B4
A20	1C4 2B4
A21	1C4 2B4
A22	1C4 2B4
A23	1C4 2B4
ADC2_SENDKEY	1D3 5B4
AUDIO_PA_SDN	1B4 5C4
AVDD	6B1 1A1 1C1 3C1 4C3 4D2
BANDSW_DCS	1B4 3A4
CAMDATA0	1B2 6B1
CAMDATA1	1B2 6B1
CAMDATA2	1B2 6B1
CAMDATA3	1C2 6B1
CAMDATA4	1B4 6B1
CAMDATA5	1B4 6B1
CAMDATA6	1B4 6B1
CAMDATA7	1B4 6B1
CAMREF	1B4 6B1
CAMCLK	1B3 6B1
CAMPCLK	1A3 6B1
CAMPDN	1B3 6A1
CAMUREF	1A4 6A1
D0	1C4 2B4
D1	1C4 2B4
D2	1C4 2B4
D3	1C4 2B4
D4	1C4 2B4
D5	1C4 2B4
D6	1C4 2B4
D7	1C4 2B4
D8	1C4 2B4
D9	1C4 2B4
D10	1C4 2B4
D11	1C4 2B4
D12	1C4 2B4
D13	1C4 2B4
D14	1C4 2B4
D15	1C4 2B4
ECS0_FLASH	1C3 2B4
ECS1_PSRAM	1C3 2C4
EINT0_HEADSET	1A3 5A3
ELB	1C3 2C4
EN_LCD_BL	1B3 6D3
EN_TORCH	1C1 5B3
EN_VIB	1C1 5D4
ERD	1C3 2C4
EUB	1C3 2C4
EUR	1C3 2C4

FM_32K/BT_32K	1B4 4D3
FM_ANT	4C4 5C1
FM_INL	1C4 4C2
FM_INR	1C4 4D2
HSMIC	5A3 5C1
HSPKL	5A3 5C1
HSPKR	5A3 5C1
I	1D3 3B2
I2C_SCL	1B3 4D3 6A1
I2C_SDA	4D3 1B3 6A1
IB	1D3 3B2
KCOL0	1A3 6A4
KCOL1	1A3 6A4
KCOL2	1A3 6A4
KCOL3	1A3 6A4
KCOL4	1A3 6A4
KROW0	1A3 6B4
KROW1	1A3 6B4
KROW2	1A3 6B4
KROW3	1A3 6B4
KROW4	1A3 6B4
LCD_RSTB	1B3 6C2
LCD_SAO	1B3 6C2
LCD_SCE0	1B3 6C2
LCD_SCLK	1B3 6C2
LCD_SDA	1B3 6C2
LE	1B4 3B2
LED_K1	6C2 6D4
LED_K2	6D2 6D4
LED_R	1C1 6B3
LSCE1B	1A3 2A3
MICBIASP	1D4 5A2 5A4
MICN0	1D4 5A2
MICN1	1D4 5A4
MICP0	1D4 5A2
MICP0_1	5A1
MICP1	1D4 5A4
MP3_OUTL	1C4 5A4 5C4
MP3_OUTR	1C4 5A4
PA_EN	1B4 3A4
PWRKEY	1C1 5C1 6C4
Q	1D3 3B2
QB	1D3 3B2
RFUCOEN	1B4 3C1
SCLK	1B4 3B2
SDATA	1B4 3C1
SINCLK	1C2 2A3 2B3
SINDATA	1C2 2A3 2B3
SINRST	1C2 2A3 2B3
SPI_CLK	1A4 2B3
SPI_DATA	1B3 2B3
SPKN0	1D4 5B4
SPKP0	1D4 5B4
SYSRST	1A4 1C1 2B3
TF_CLK	1B3 2C2
TF_DIN	1B3 2C2
TF_DOUT	1B3 2C2
URXD1	1B3 5B1
URXD1_1	5B1
UTXD1	1B3 5C1
UTXD1_1	5B1
VAF_C	1C3 3C1
VAF_C	1D3 3A3
VBAT_BB	1C1 1C2 1D3 2A2 3A1 5B3 5C3 5D4 6A3 6C2
VBAT_RF	3A1 3A2
VCCRF	1C1 3A1 3A3 3B2 3B2 3B3 3D2
VCHG	1B1 1C2 5C1
VCORE	1B2 1C1
VCCXOEN	1B4 3C1
VDD	1A2 1C1 1C1 2A3 2C1 6C2 6C2
VMEM	1B2 1C1 2B3 2C3 2C3 2C4
VRF_SENSE	1C1 3A2
VSIM	1D2 2B3
VTCXO	1C1 3D1
WATCHDOG	1A4 2B4

ALL RIGHTS RESERVED.REPRODUCTION AND DISCLOSURE PROHIBITED

MODIFIED	NAME SCHEMATIC	DATE 31/03/2011	CHECKED	NAME SCHEMATIC	DATE 31/03/2011
TITLE		SMN CO. LTD.			
Product Name		SCHEMATIC BOARD GL168D MMI V01			
P.N.		PAGE/SHEET 7 /			
VER.	DATE	FORMAT SIZE A2	DOCUMENT NUMBER	TYPE	PART
					VERS.

Title: Gref Part Report  
 Design: gl168d\_mmi\_fcc  
 Date: Sep 8 14:14:26 2011

B500	SELF CMS	{5C2}
B501	SELF CMS	{5C2}
B503	SELF CMS	{5C2}
BL101	BLINDIP	{1A2}
BL102	BLINDIP	{1A2}
BL300	BLINDIP	{3A4}
BL301	BLINDIP	{3A4}
C100	PC0402	{1D1}
C101	PC0402	{1D1}
C102	PC0402	{1D4}
C103	PC0402	{1A4}
C104	PC0402	{1B4}
C105	PC0402	{1D4}
C106	PC0402	{1D4}
C107	PC0402	{1D4}
C108	PC0402	{1D4}
C109	PC0402	{1D4}
C110	PC0402	{1D4}
C111	PC0402	{1C3}
C112	PC0402	{1D3}
C113	PC0402	{1D3}
C114	PC0402	{1D3}
C115	PC0402	{1D2}
C116	PC0402	{1A2}
C117	PC0402	{1E2}
C118	PC0402	{1E2}
C119	PC0402	{1D2}
C122	PC0603X5R	{1C2}
C124	PC0402	{1A1}
C125	PC0402	{1B1}
C126	PC0402	{1B1}
C127	PC0603X5R	{1D1}
C128	PC0402	{1C1}
C129	PC0402	{1D1}
C130	PC0402	{1B1}
C131	PC0402	{1C1}
C132	PC0603X5R	{1D1}
C133	PC0402	{1B1}
C134	PC0603X5R	{1D1}
C135	PC0603X5R	{1D1}
C136	PC0603X5R	{1C1}
C200	PC0402	{2C4}
C201	PC0402	{2B3}
C202	PC0402	{2B3}
C203	PC0402	{2A3}
C204	PC0402	{2A3}
C205	PC0402	{2A2}
C206	PC0402	{2B2}
C207	PC0402	{2B2}
C208	PC0402	{2A2}
C209	PC0402	{2A2}
C210	PC0402	{2B2}
C211	PC0402	{2A2}
C212	PC0402	{2A2}
C213	PC0402	{2B2}
C214	PC0402	{2B2}
C215	PC0402	{2A1}
C216	PC0402	{2B1}
C217	PC0402	{2C1}
C218	PC0402	{2C1}
C219	PC0402	{2B3}
C220	PC0402	{2C3}
C300	TANTALECMS	{3A1}
C301	PC0402	{3B2}
C303	PC0402	{3A4}
C304	PC0402	{3A4}
C305	PC0402	{3A4}
C306	PC0402	{3A4}
C307	PC0402	{3A4}
C308	PC0402	{3B3}
C309	PC0402	{3B3}
C310	PC0402	{3C3}
C311	PC0402	{3C3}
C312	PC0402	{3C3}
C313	PC0402	{3A3}
C314	PC0402	{3A3}
C315	PC0402	{3A3}
C316	PC0402	{3A2}
C317	PC0402	{3A2}
C318	PC0402	{3A2}

C319	PC0402	{3C2}
C320	PC0603X5R	{3C2}
C321	PC0402	{3C2}
C322	PC0402	{3A2}
C323	PC0402	{3A2}
C324	PC0402	{3D2}
C326	PC0402	{3D2}
C327	PC0603X5R	{3D2}
C328	PC0402	{3D2}
C329	PC0402	{3B2}
C330	PC0402	{3D2}
C331	PC0402	{3D2}
C332	PC0402	{3D2}
C334	PC0805	{3A1}
C335	PC0402	{3C1}
C336	PC0402	{3C1}
C337	PC0402	{3C1}
C338	PC0402	{3C1}
C340	PC0402	{3A1}
C341	PC0603X5R	{3A1}
C400	PC0402	{4C3}
C402	PC0402	{4C2}
C404	PC0402	{4D3}
C405	PC0402	{4C3}
C406	PC0402	{4D2}
C500	PC0402	{5C4}
C501	PC0402	{5A4}
C502	PC0402	{5A4}
C503	PC0402	{5D4}
C504	PC0402	{5A4}
C505	PC0402	{5A4}
C506	PC0402	{5A4}
C507	PC0402	{5C4}
C508	PC0402	{5B4}
C509	PC0402	{5B4}
C510	PC0402	{5B4}
C511	PC0603X5R	{5A4}
C512	PC0603X5R	{5C4}
C513	PC0805	{5A4}
C514	PC0805	{5A4}
C515	PC0402	{5C4}
C516	PC0402	{5A3}
C517	PC0402	{5A3}
C518	PC0402	{5A3}
C519	PC0402	{5C3}
C520	PC0402	{5C3}
C521	PC0402	{5C3}
C523	PC0402	{5B3}
C525	PC0603X5R	{5A2}
C526	PC0402	{5A2}
C527	PC0402	{5A2}
C528	PC0402	{5A1}
C529	PC0402	{5A1}
C530	PC0402	{5A1}
C532	PC0402	{5B2}
C533	PC0402	{5C2}
C534	PC0402	{5C2}
C535	PC0402	{5C2}
C536	PC0402	{5B3}
C602	PC0402	{6C2}
C607	PC0402	{6D2}
C608	PC0603X5R	{6D2}
C615	PC0402	{6C2}
C621	PC0603X5R	{6B1}
C622	PC0402	{6B1}
C623	PC0402	{6B1}
C624	PC0402	{6B1}
C625	PC0402	{6B1}
C627	PC0402	{6B1}
CR100	DIODE	{1D3}
CR500	DIODE	{5B4}
CR501	DIODE	{5B4}
CR502	DIODE	{5D4}
DS500	LED	{5B3}
DS600	LED	{6A2}
DS601	LED	{6A2}
DS602	LED	{6A2}
DS604	LED	{6A2}
DS605	LED	{6A2}
DS606	LED	{6A2}
FL300	FILTSAP10P	{3C3}
J100	CONN4PS	{1D3}
J101	CONN2PS	{1B1}
J200	SIM10PIN	{2A1}
J201	SIM10PIN	{2B1}

J202	CONN12PS	{2C1}
J300	TSTCOAXS	{3A4}
J400	CONN14PS	{5C2}
J601	CONN16PS	{6C3}
J603	CONN24PS	{6B1}
L100	SELF CMS	{1D4}
L101	SELF CMS	{1D4}
L102	SELF CMS	{1A1}
L301	SELF CMS	{3C4}
L302	SELF CMS	{3B2}
L303	SELF CMS	{3A4}
L304	SELF CMS	{3B4}
L305	SELF CMS	{3C4}
L306	SELF CMS	{3C3}
L307	SELF CMS	{3C3}
L308	SELF CMS	{3B2}
L309	SELF CMS	{3A2}
L310	SELF CMS	{3C1}
LS00	SELF CMS	{5B4}
LS01	SELF CMS	{5B4}
LS02	SELF CMS	{5C3}
LS03	SELF CMS	{5C3}
LS08	SELF CMS	{5A1}
LS09	SELF CMS	{5A1}
LS10	SELF CMS	{5C2}
LS11	SELF CMS	{5B3}
MS00	VIUREUR	{5D4}
MA200	2IN1COMP	{2B4}
MA201	MTE302	{2A3}
MA300	SKY77542	{3A3}
MA301	MT6139	{3C2}
MK500	MICROPHONE	{5A1}
MN100	MT6223	{1B3 1B2 1D4 1C1}
MX400	AR1019	{4D3}
Q101	RP1800GELL	{1C2}
Q600	BC847BF	{6D4}
R100	PR0402	{1B4}
R104	PR0805	{1D2}
R105	PR0402	{1C1}
R106	PR0402	{1D1}
R201	PR0402	{2B3}
R202	PR0402	{2C4}
R203	PR0402	{2B3}
R204	PR0402	{2B3}
R205	PR0402	{2B3}
R206	PR0402	{2B3}
R207	PR0402	{2B3}
R208	PR0402	{2C3}
R209	PR0402	{2C2}
R210	PR0402	{2C2}
R301	PR0402	{3A4}
R302	PR0402	{3A4}
R303	PR0402	{3A3}
R304	PR0402	{3A3}
R305	PR0402	{3A3}
R306	PR0402	{3C2}
R316	PR0402	{3A4}
R407	PR0402	{4C3}
R408	PR0402	{4C3}
R420	PR0402	{4C3}
R500	PR0402	{5C4}
R501	PR0402	{5C4}
R502	PR0402	{5A4}
R503	PR0402	{5A4}
R504	PR0402	{5C4}
R505	PR0402	{5D4}
R506	PR0402	{5B4}
R507	PR0402	{5A3}
R508	PR0402	{5A3}
R509	PR0402	{5A3}
R510	PR0603	{5B3}
R512	PR0402	{5A2}
R513	PR0402	{5A1}
R514	PR0402	{5A1}
R516	PR0402	{5B1}
R517	PR0402	{5C1}
R518	PR0402	{5C2}
R603	PR0402	{6D4}
DS5005	LED	{6D4}
R604	PR0402	{6D4}
R605	PR0402	{6D4}
R606	PR0402	{6D3}
R610	PR0402	{6A1}
R613	PR0402	{6A2}
R614	PR0402	{6A2}

R615	PR0402	{6A2}
R616	PR0402	{6A2}
R617	PR0402	{6A2}
R618	PR0402	{6A2}
REC500	BLINDIP	{5B3}
REC501	BLINDIP	{5B3}
RT100	TRANSILUNID	{1B1}
RT500	VARISTANCE	{5C3}
RT501	VARISTANCE	{5C3}
RT502	VARISTANCE	{5A1}
RT503	VARISTANCE	{5A1}
S600	TOUCHE	{6C4}
S601	TOUCHE	{6A4}
S602	TOUCHE	{6A4}
S603	TOUCHE	{6B4}
S604	TOUCHE	{6B4}
S605	TOUCHE	{6B4}
S606	TOUCHE	{6A4}
S607	TOUCHE	{6A4}
S608	TOUCHE	{6B4}
S609	TOUCHE	{6B4}
S610	TOUCHE	{6B4}
S611	TOUCHE	{6A3}
S612	TOUCHE	{6A3}
S613	TOUCHE	{6B3}
S614	TOUCHE	{6B3}
S615	TOUCHE	{6B3}
S616	TOUCHE	{6A3}
S617	TOUCHE	{6A3}
S618	TOUCHE	{6B3}
S619	TOUCHE	{6B3}
S620	TOUCHE	{6B3}
S621	TOUCHE	{6B3}
S622	TOUCHE	{6B3}
SPK502	BLINDIP	{5C3}
SPK503	BLINDIP	{5C3}
TP100	POINTEST	{1C3}
TP101	POINTEST	{1D3}
TP200	POINTEST	{2A1}
TP201	POINTEST	{2A1}
TP202	POINTEST	{2A1}
TP203	POINTEST	{2A1}
TP204	POINTEST	{2B1}
TP206	POINTEST	{2B1}
TP209	POINTEST	{2B1}
TP210	POINTEST	{2B1}
TP501	POINTEST	{5A2}
TP502	POINTEST	{5A2}
TP503	POINTEST	{5B1}
TP504	POINTEST	{5B1}
TP505	POINTEST	{5C1}
TP509	POINTEST	{5C1}
TP512	POINTEST	{5C1}
TVS501	TRANSILUNID	{5B2}
TVS502	DIODE	{5B2}
TVS503	DIODE	{5B1}
TVS504	DIODE	{5B1}
TVS505	DIODE	{5B1}
U500	LM4990	{5C4}
Y100	QUARTZCMS	{1A4}
Y300	QUARTZ4P	{3C1}
Z300	ETOILE2	{3A1}
Z301	ETOILE2	{3A4}
Z302	ETOILE2	{3A1}
Z500	ETOILE2	{5A4}

MODIFIED	NAME	DATE	CHECKED	NAME	DATE	
	SCHMATIC	31/03/2011		SCHMATIC	31/03/2011	
TITLE		SMN CO. LTD.				
Product Name		SCHEMATIC BOARD GL168D MMI V01				
P.N.		PAGE/SHEET 8 /				
VER.	DATE	FORMAT SIZE	DOCUMENT NUMBER	TYPE	PART	VERS.
		A2				

ALL RIGHTS RESERVED.REPRODUCTION AND DISCLOSURE PROHIBITED