

J100-1 VBATBB 10.25 1.2 1
 J100-2 GND 7.1 1.2 1
 J100-3 GND 3.95 1.2 1
 J100-4 GND 7.1 5.45 1
 J101-1 VCHG -10.7 -0.58 1
 J101-2 GND -12.6 -0.58 1
 J200-1 1SIMCLK -12.68 10.8 1
 J200-2 1SIMIO -12.68 23.4 1
 J200-3 1SIMRST -10.14 10.8 1
 J200-4 1VSIM -10.14 23.4 1
 J200-5 1VSIM -7.6 10.8 1
 J200-6 GND -7.6 23.4 1
 J200-7 GND -18.95 15.15 1
 J200-8 GND -18.95 17.85 1
 J200-9 GND -4.05 15.15 1
 J200-10 GND -4.05 17.85 1
 J201-1 2SIMCLK 4.81 10.81 1
 J201-2 2SIMIO 4.81 23.41 1
 J201-3 2SIMRST 7.35 10.81 1
 J201-4 2VSIM 7.35 23.41 1
 J201-5 2VSIM 9.89 10.81 1
 J201-6 GND 9.89 23.41 1
 J201-7 GND -1.46 15.16 1
 J201-8 GND -1.46 17.86 1
 J201-9 GND 13.44 15.16 1
 J201-10 GND 13.44 17.86 1
 J202-1 UNNAMED2CONN12PS1454A1 1.05 44.49 1
 J202-2 UNNAMED2CONN12PS1454A2 1.05 45.59 1
 J202-3 SDCMD 1.05 46.69 1
 J202-4 VDD 1.05 47.79 1
 J202-5 SDCLK 1.05 48.89 1
 J202-6 GND 1.05 49.99 1
 J202-7 SDDATO 1.05 51.09 1
 J202-8 UNNAMED2CONN12PS1454A 1.05 52.19 1
 J202-9 GND -1.55 40.815 1
 J202-10 GND 6.75 40.815 1
 J202-11 GND 6.75 54.565 1
 J202-12 GND -1.55 54.565 1

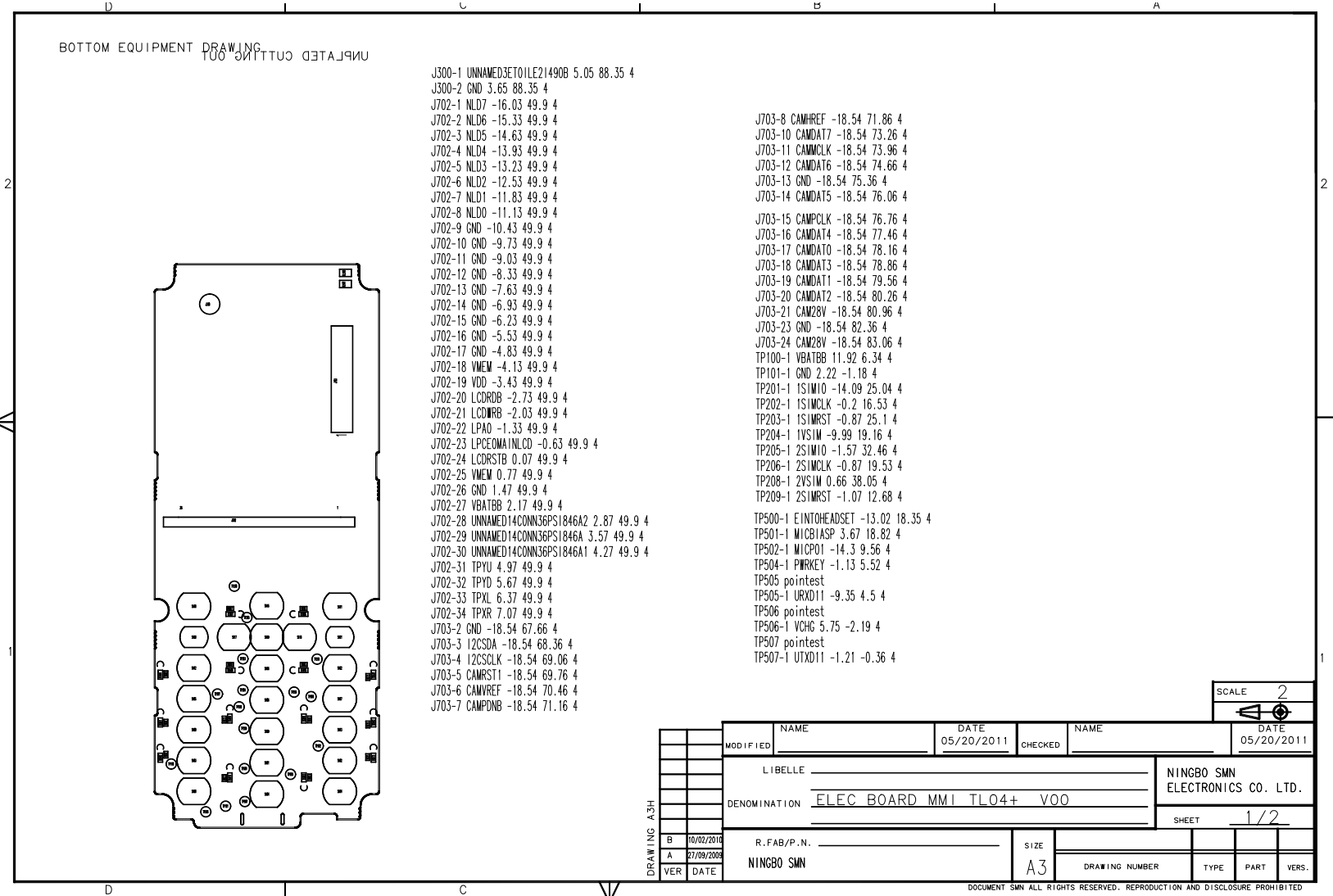
TOP EQUIPMENT DRAWING
 UNPLATED CUTTING OUT

J501-1 URXD11 -4.8 6.65 1
 J501-2 VCHG -4.4 6.65 1
 J501-3 UTXD11 -4 6.65 1
 J501-4 UNNAMED5CONN14PS11209A1 -3.6 6.65 1
 J501-5 UNNAMED5CONN14PS11209A3 -3.2 6.65 1
 J501-6 UNNAMED5CONN14PS11209A -2.8 6.65 1
 J501-7 UNNAMED5CONN14PS11209A6 -2.4 6.65 1
 J501-8 PWRKEY -2 6.65 1
 J501-9 UNNAMED5CONN14PS11209A7 -1.6 6.65 1
 J501-10 HSFND -1.2 6.65 1
 J501-11 GND 1.45 4.85 1
 J501-12 GND 1 -0.45 0
 J501-13 GND -6.2 -0.45 0
 J501-14 GND -7.45 4.85 1
 J601-1 GND 19.25 55.7 1
 J601-2 KCOL4 19.25 56.5 1
 J601-3 KCOL5 19.25 57.3 1
 J601-4 KCOL6 19.25 58.1 1
 J601-5 KROW7 19.25 58.9 1
 J601-6 GND 19.25 59.7 1
 J703-2 GND -23.9 64.4 1
 J703-3 12CSDA -23.9 65.1 1
 J703-4 12CSCLK -23.9 65.8 1
 J703-5 CAMRST1 -23.9 66.5 1
 J703-6 CAMVREF -23.9 67.2 1
 J703-7 CAMPDNB -23.9 67.9 1
 J703-8 CAMHREF -23.9 68.6 1
 J703-10 CAMDAT7 -23.9 70 1
 J703-11 CAMCLK -23.9 70.7 1
 J703-12 CAMDAT6 -23.9 71.4 1
 J703-13 GND -23.9 72.1 1
 J703-14 CAMDAT5 -23.9 72.8 1
 J703-15 CAMCLK -23.9 73.5 1
 J703-16 CAMDAT4 -23.9 74.2 1
 J703-17 CAMDAT0 -23.9 74.9 1
 J703-18 CAMDAT3 -23.9 75.6 1
 J703-19 CAMDAT1 -23.9 76.3 1
 J703-20 CAMDAT2 -23.9 77 1
 J703-21 CAM28V -23.9 77.7 1
 J703-23 GND -23.9 79.1 1
 J703-24 CAM28V -23.9 79.8 1
 TP400-1 UNNAMED4PC04021388A -23.89 86.1 1
 TP508-1 FWANT 18.16 15.84 1

SCALE 2

MODIFIED	NAME	DATE	CHECKED	NAME	DATE
		06/02/2011			06/02/2011
LIBELLE					NINGBO SMN ELECTRONICS CO. LTD.
DENOMINATION					
ELEC BOARD MMI TQ03+ V01					SHEET 1/2
R.FAB/P.N.			SIZE	DRAWING NUMBER	TYPE PART VERS.
NINGBO SMN			A3		
DRAWING A3H	VER	DATE			
B		10/02/2010			
A		27/09/2008			

BOTTOM EQUIPMENT DRAWING
UNPLATED CUTTING



- J300-1 UNNAMEDJET01LE21490B 5.05 88.35 4
- J300-2 GND 3.65 88.35 4
- J702-1 NLD7 -16.03 49.9 4
- J702-2 NLD6 -15.33 49.9 4
- J702-3 NLD5 -14.63 49.9 4
- J702-4 NLD4 -13.93 49.9 4
- J702-5 NLD3 -13.23 49.9 4
- J702-6 NLD2 -12.53 49.9 4
- J702-7 NLD1 -11.83 49.9 4
- J702-8 NLD0 -11.13 49.9 4
- J702-9 GND -10.43 49.9 4
- J702-10 GND -9.73 49.9 4
- J702-11 GND -9.03 49.9 4
- J702-12 GND -8.33 49.9 4
- J702-13 GND -7.63 49.9 4
- J702-14 GND -6.93 49.9 4
- J702-15 GND -6.23 49.9 4
- J702-16 GND -5.53 49.9 4
- J702-17 GND -4.83 49.9 4
- J702-18 VMEM -4.13 49.9 4
- J702-19 VDD -3.43 49.9 4
- J702-20 LCDDR0B -2.73 49.9 4
- J702-21 LCDWRB -2.03 49.9 4
- J702-22 LPA0 -1.33 49.9 4
- J702-23 LPCEOMA1NLCD -0.63 49.9 4
- J702-24 LCDRSTB 0.07 49.9 4
- J702-25 VMEM 0.77 49.9 4
- J702-26 GND 1.47 49.9 4
- J702-27 VBATBB 2.17 49.9 4
- J702-28 UNNAMED14CONN36PS1846A2 2.87 49.9 4
- J702-29 UNNAMED14CONN36PS1846A 3.57 49.9 4
- J702-30 UNNAMED14CONN36PS1846A1 4.27 49.9 4
- J702-31 TPYU 4.97 49.9 4
- J702-32 TPYD 5.67 49.9 4
- J702-33 TPXL 6.37 49.9 4
- J702-34 TPXR 7.07 49.9 4
- J703-2 GND -18.54 67.66 4
- J703-3 I2CSDA -18.54 68.36 4
- J703-4 I2CSCLK -18.54 69.06 4
- J703-5 CAMRST1 -18.54 69.76 4
- J703-6 CAMVREF -18.54 70.46 4
- J703-7 CAMP0NB -18.54 71.16 4

- J703-8 CAMHREF -18.54 71.86 4
- J703-10 CAMDAT7 -18.54 73.26 4
- J703-11 CAMCLK -18.54 73.96 4
- J703-12 CAMDAT6 -18.54 74.66 4
- J703-13 GND -18.54 75.36 4
- J703-14 CAMDAT5 -18.54 76.06 4
- J703-15 CAMCLK -18.54 76.76 4
- J703-16 CAMDAT4 -18.54 77.46 4
- J703-17 CAMDAT3 -18.54 78.16 4
- J703-18 CAMDAT3 -18.54 78.86 4
- J703-19 CAMDAT1 -18.54 79.56 4
- J703-20 CAMDAT2 -18.54 80.26 4
- J703-21 CAM28V -18.54 80.96 4
- J703-23 GND -18.54 82.36 4
- J703-24 CAM28V -18.54 83.06 4
- TP100-1 VBATBB 11.92 6.34 4
- TP101-1 GND 2.22 -1.18 4
- TP201-1 1SIMI0 -14.09 25.04 4
- TP202-1 1SIMCLK -0.2 16.53 4
- TP203-1 1SIMRST -0.87 25.1 4
- TP204-1 1VSIM -9.99 19.16 4
- TP205-1 2SIMI0 -1.57 32.46 4
- TP206-1 2SIMCLK -0.87 19.53 4
- TP208-1 2VSIM 0.66 38.05 4
- TP209-1 2SIMRST -1.07 12.68 4
- TP500-1 EINTOHEADSET -13.02 18.35 4
- TP501-1 MICBIASP 3.67 18.82 4
- TP502-1 MICP01 -14.3 9.56 4
- TP504-1 PIRKEY -1.13 5.52 4
- TP505 pintest
- TP505-1 URXD11 -9.35 4.5 4
- TP506 pintest
- TP506-1 VCHG 5.75 -2.19 4
- TP507 pintest
- TP507-1 UTXD11 -1.21 -0.36 4

SCALE 2

DRAWING A3H	MODIFIED	NAME	DATE	CHECKED	NAME	DATE	
			05/20/2011			05/20/2011	
	LIBELLE					NINGBO SMN ELECTRONICS CO. LTD.	
	DENOMINATION					ELEC BOARD MMI TLO4+ V00	
						SHEET 1/2	
	R. FAB/P. N.		SIZE				
	NINGBO SMN		A3				
VER	DATE	DRAWING NUMBER		TYPE	PART	VERS.	