

3M Cogent, Inc

Instruction of Mobile Ident™ II-E



## Table of Content

1. Power On.....	3
2. Login the Mobile Ident™ II-E.....	3
3. Home Page.....	4
4. Settings.....	4
4.1. Volume.....	5
4.2. Date.....	5
4.3. Users.....	6
5. Wireless.....	6
6. Identify.....	7
6.1. Search.....	7
6.2. Enroll.....	8
6.2.1. Demographics.....	8
6.2.2. Fingerprints.....	8
6.2.3. Photo.....	9
6.2.4. Database.....	9

## 1. Power On

To turn on and shut down the device, press power button for 2-3 seconds (Figure 1).



Figure 1

## 2. Login the Mobile Ident™ II-E

In order to access the systems, you have to get a valid user name and password. Enter your user name and password and then tap 'Login', as Figure 2 shown below. Administrators create user accounts using 'Users'. For details, please refer to 4 'Users'.

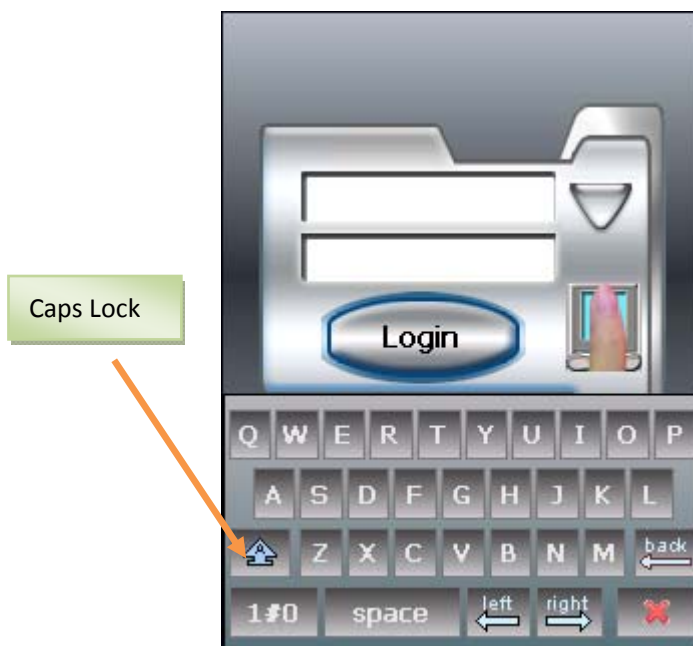


Figure 2

### 3. Home Page

After login, you will get into the main page of MI2 as Figure 3 shown below. All function of MI2 will display in this page. Tap the icon (function) you wish to operate.

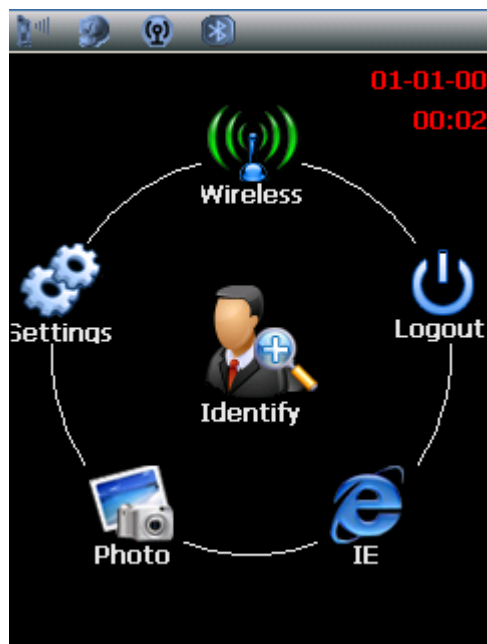


Figure 3

### 4. Settings

Select and enter 'Settings', you can set the data be yourself (Figure 4).

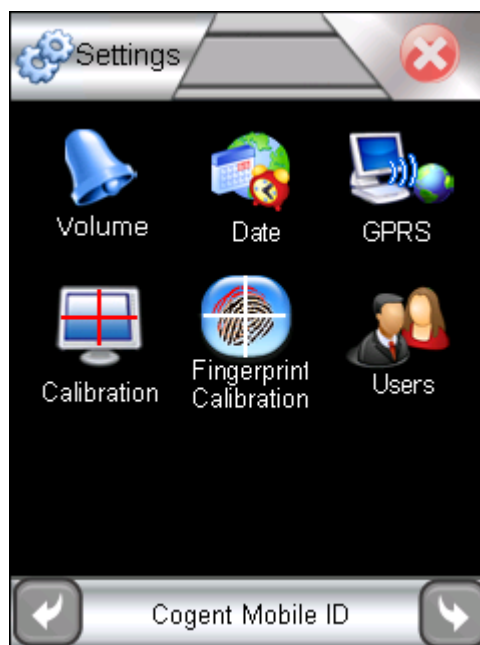


Figure 4

## 4.1. Volume

Tap 'Save' to save your setting (Figure 5).

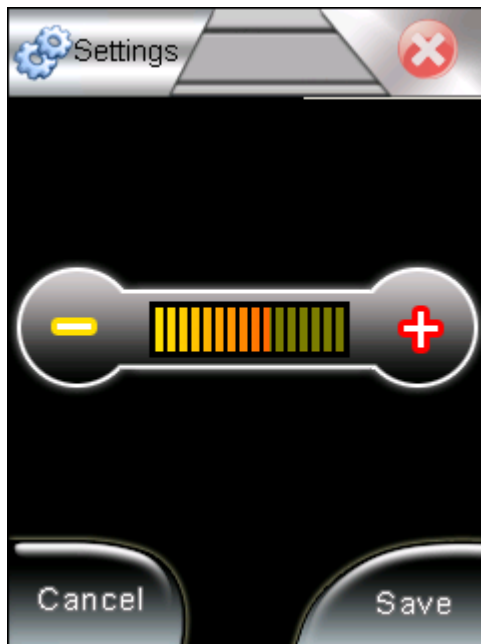


Figure 5

## 4.2. Date

Set the time, date and time zone, then tap save (Figure 6).

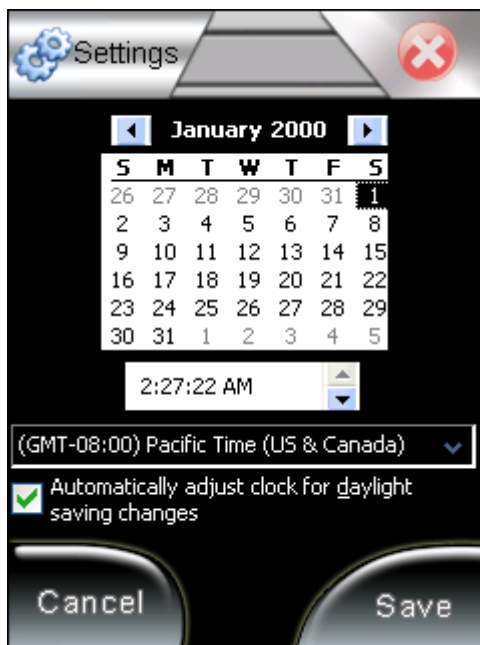


Figure 6

### 4.3. Users

Tap 'New' to add user. Enter the information in the page, then tap save to save your setting (Figure 7).

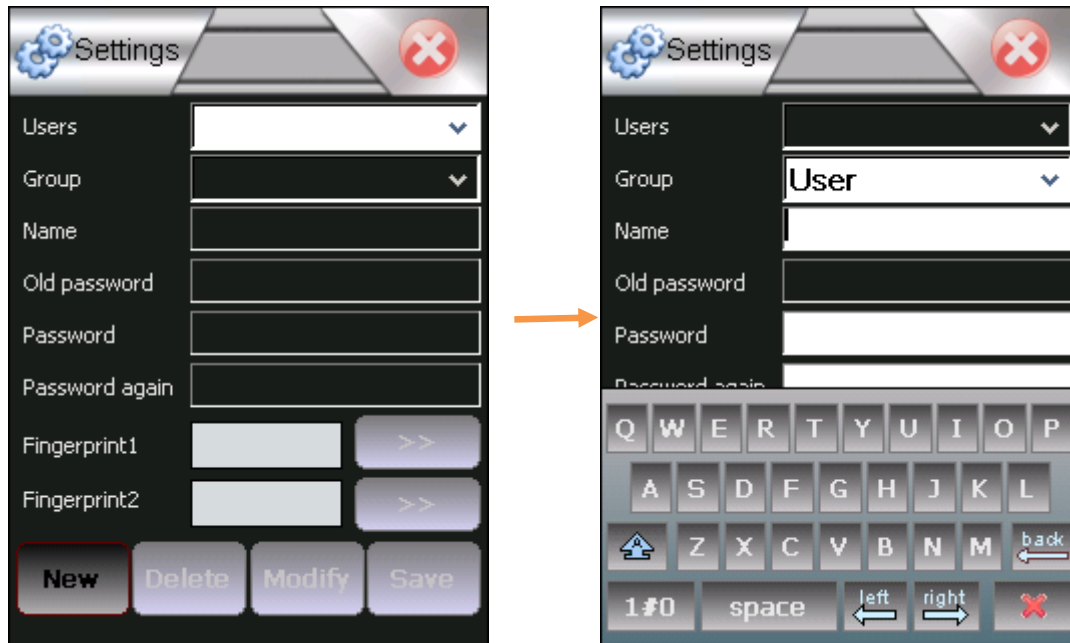


Figure7

### 5. Wireless

Select 'Wireless' and get into the power control. Tap the On-Off button to control the wireless function (Figure 8).



Figure 8

## 6. Identify

'Identify' is the main function of MI2. It is use to enroll fingerprint, edit and search the demographics (Figure 9).

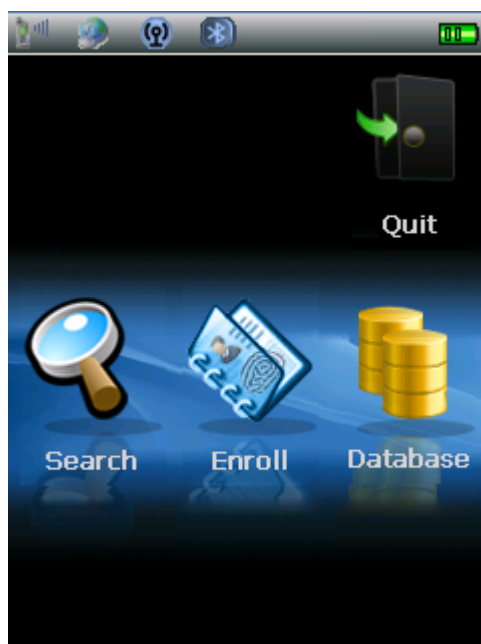


Figure 9

### 6.1. Search

'Search' is for searching the data in the database. You can search by finger and facial (Figure 10). If it finds a match in the database, the information will be displayed.

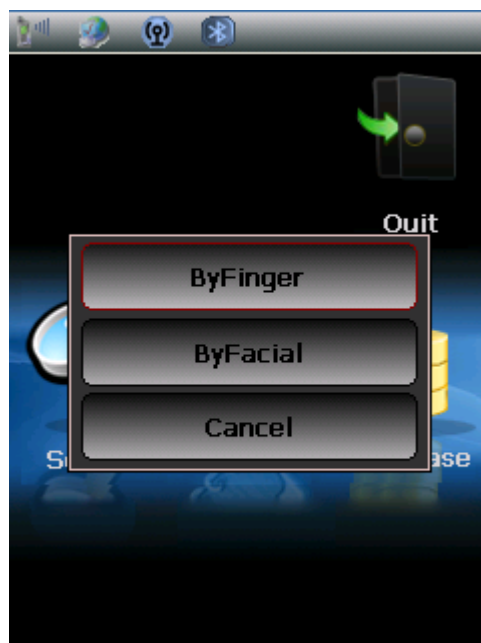


Figure 10

## 6.2. Enroll

### 6.2.1. Demographics

Tap 'Enroll' and get into the demographics. Tap the information you wish to enter and edit it. After editing demographics, tap 'OK' go to the next step (Figure 11).

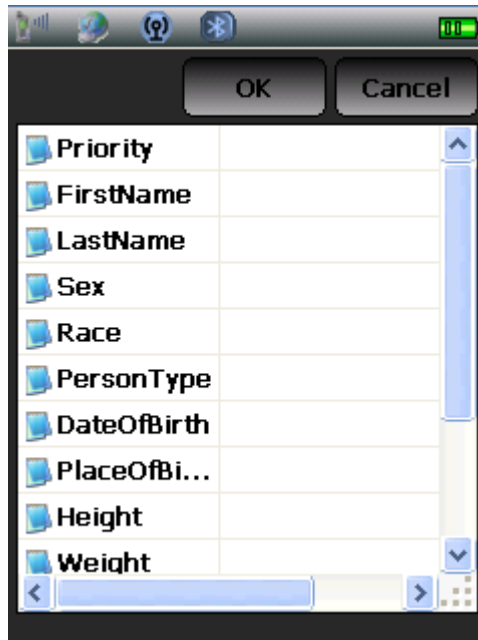


Figure 11

### 6.2.2. Fingerprints

Tenprints is required. Follow the instruction to enroll tenprints (from R Thumb to L Little) (Figure 12). Select the finger you wish to enroll. If the quality of fingerprint is poor, the system will ask for capture again. If the quality of the image is good, then it will go to capture the next finger.

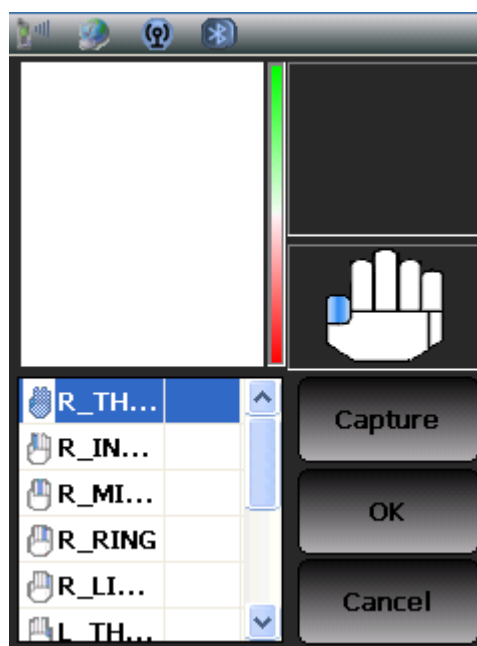




Figure 12

### 6.2.3. Photo

After capturing the fingerprint, it will go to the next step 'Photo' automatically. It will take 5 photos for 5 different face angles. One photo captured at front, two captured at 90 degree (left and right), two captured at 45 degree (left and right) (Figure 13).



Figure 13

### 6.3. Database

Check the data you entered (Figure 14). You can edit the information you entered previously.



Figure 14

## FCC INFORMATION

This device complies with Part 15 of the FCC Rules. Operation is subject to the following two conditions: (1) this device may not cause harmful interference, and (2) this device must accept any interference received, including interference that may cause undesired operation.

Changes or modifications not expressly approved by the party responsible for compliance could void the user's authority to operate the equipment.

This equipment complies with FCC radiation exposure limits set forth for an uncontrolled environment. End users must follow the specific operating instructions for satisfying RF exposure compliance. This transmitter must not be co-located or operating in conjunction with any other antenna or transmitter.

NOTE: This equipment has been tested and found to comply with the limits for a Class B digital device, pursuant to part 15 of the FCC Rules. These limits are designed to provide reasonable protection against harmful interference in a residential installation. This equipment generates, uses, and can radiate radio frequency energy and, if not installed and used in accordance with the instructions, may cause harmful interference to radio communications. However, there is no guarantee that interference will not occur in a particular installation. If this equipment does cause harmful interference to radio or television reception, which can be determined by turning the equipment off and on, the user is encouraged to try to correct the interference by one of the following measures:

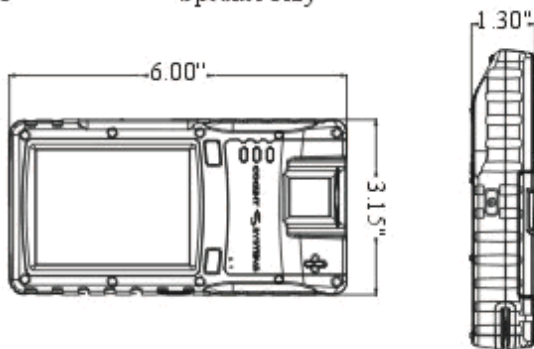
- Reorient or relocate the receiving antenna.
- Increase the separation between the equipment and receiver.
- Connect the equipment into an outlet on a circuit different from that which the receiver is connected.
- Consult the dealer or an experienced radio/TV technician for help.

# Cogent Mobile Ident II Specification



## Mechanical Features

Dimensions	L 6" / W 3.15" / H 1.30"
Weight	380 g (standard battery 3.7V 1100mAh); extra battery 4400mAh 90g
Display	Color 3.5 in. QVGA (320X240)
Touch Panel	Active area 52.56X70.08mm
Backlight	160 cd/m <sup>2</sup>
Main Battery	Rechargeable Lithium Ion 3.7V, 1100mAh standard battery; extra battery 4400mAh
Expansion Slot	Micro SD card (Internal)
Network Connects	WAN / LAN (Optional) / PAN/GPRS
Notification	Vibration and multiple colored LEDs
Keypad Options	Two Button and TouchScreen
Audio	Speaker only



## Electronic

CPU	Marvell PXA310 624 MHz processor
Operating System	WinCE 6.0/Linux 2.6
Memory	128 MB SDRAM/ 128 ROM
SD Card	Up to 8 G
Interface/Comm	USB 2.0 client, USB 1.1 Host

## Environmental

Operating Temp	32° F to 104° F / 0° C to 40° C
Storage Temp	-13° F to 149° F / -25° C to 65° C
Humidity	90% non-condensing

## Wireless WAN Data

WWAN Radio	GPRS/Edge GSM (900, 1800/1900 MHz) (EVDO under development)
Antenna	Internal

## Wireless GPS Data

GPS-enabled	UART - NMEA interface; High sensitivity: -159dBm; Auto detected external active antenna
-------------	---

## Wireless LAN Data

WLAN Radio	IEEE 802.11b/g
Data Rate	Up to 11 Mbps for 802.11b Up to 54 Mbps for 802.11g
Antenna	Internal

## Wireless PAN Data

Bluetooth	BT V2.0, class 2
Antenna	Internal

## Peripherals and Accessories

Cables	USB active sync cable (mini-A/B plug), vehicle charging cable
Battery Chargers	AC/DC power charging Adaptor

## Mag Swipe Card Reader

Mag Swipe Card standard	ISO7811
Track	3 Track

## Image Sensor

Facial optical module	CMOS, 1.3 Megapixels
Fingerprint optical module	CMOS, 500 DPI
Fingerprint Active Area	0.64" x 0.96"
Array Size	320 x 480 pixels

