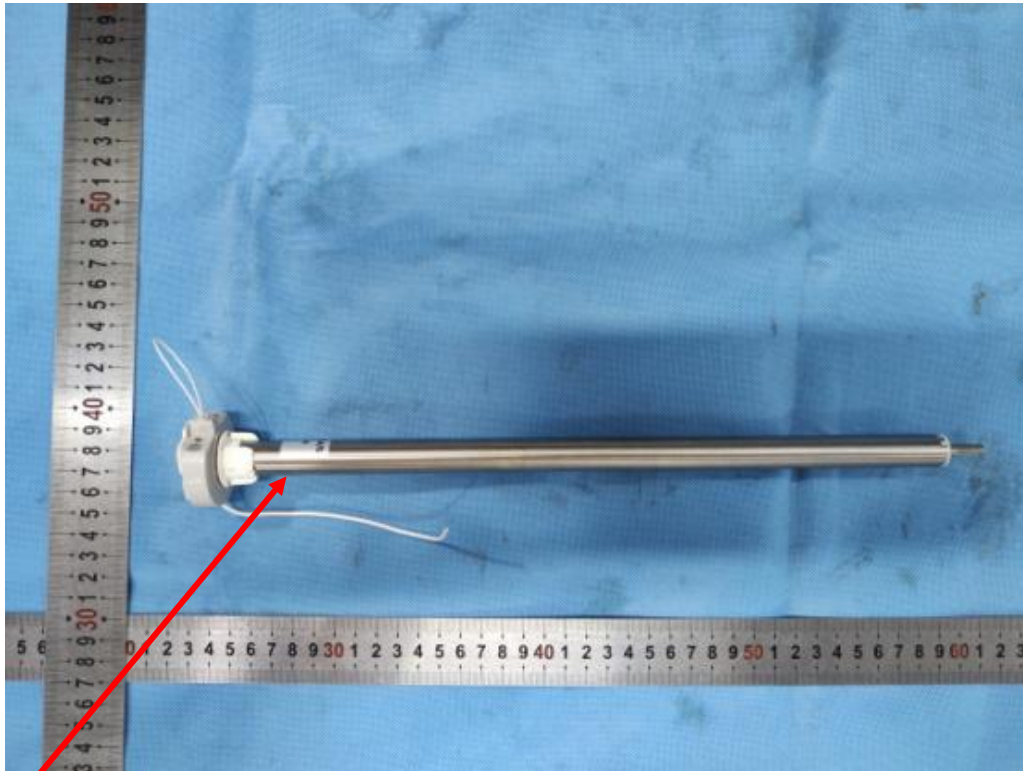






Label & Location



Label position

Label

MODEL CMD-02-P TUBULAR MOTOR	INPUT USB-C 5V \equiv 5W	TORQUE 0.3Nm	SPEED 30rpm	OPERATING TIME 6min
MOTIONBLINDS	This device complies with part 15 of the FCC Rules. Operation is subject to the following two conditions: (1) This device may not cause harmful interference, and (2) this device must accept any interference received, including interference that may cause undesired operation. FCC ID:ZY4CMD02P		IP 20     Conforms to ANSI/CAV/LA 388.305	
Coulisse B.V. Vonderweg 48, 7468 DC Enter, The Netherlands				