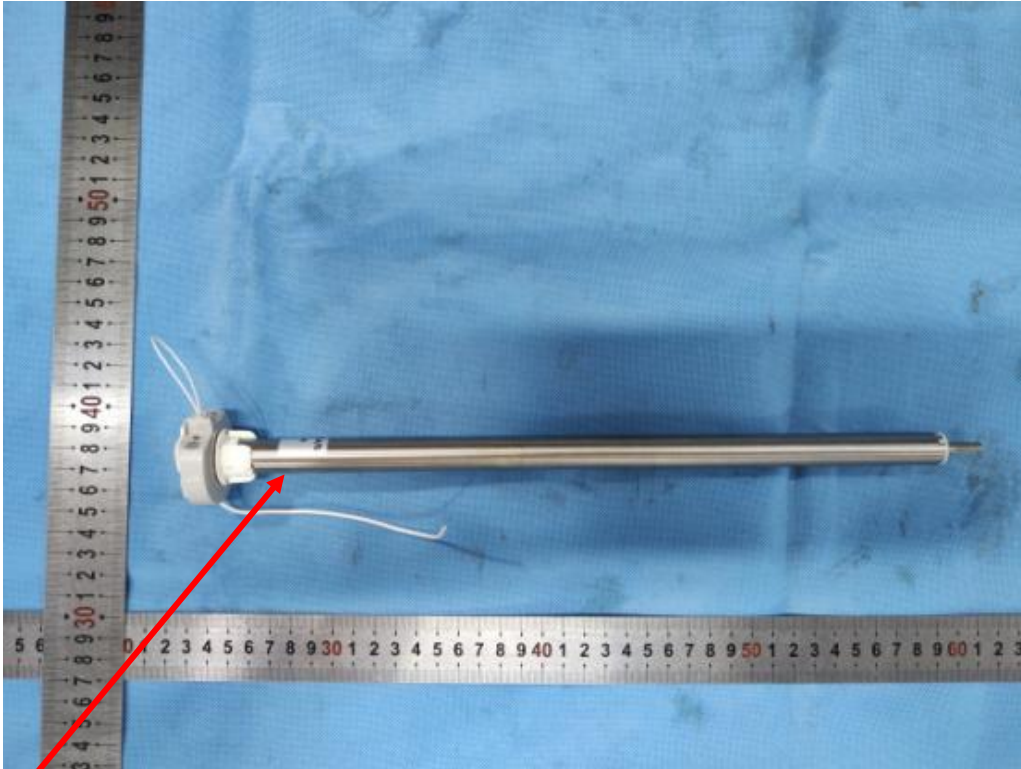
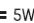







## Label & Location



Label position

## Label

<b>MODEL</b> CMD-02 TUBULAR MOTOR	<b>INPUT</b> USB-C 5V  5W	<b>TORQUE</b> 0.3Nm	<b>SPEED</b> 30rpm	<b>OPERATING TIME</b> 6min
<b>MOTIONBLINDS</b> <small>This device complies with part 15 of the FCC Rules. Operation is subject to the following two conditions: (1) This device may not cause harmful interference, and (2) this device must accept any interference received, including interference that may cause undesired operation.   FCC ID:ZY4CMD02</small>				
 IP 20     <small>Conforms to ANSI/ISA-11.1 Std. 1124</small> Coulisse B.V., Vonderweg 4/8, 7468 DC Enter, The Netherlands				