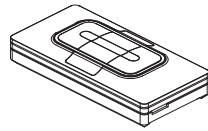


Manual
Absolute Control
Remote control ABC-26-W



coulisse

WARNING: Important safety instructions. Follow all instructions, since incorrect installation can lead to severe injury.

WARNING: Do not make repairs yourself. Do not attempt to open the device or disassemble it. You run the risk of electric shock and voiding the limited warranty. No user-serviceable parts are inside.



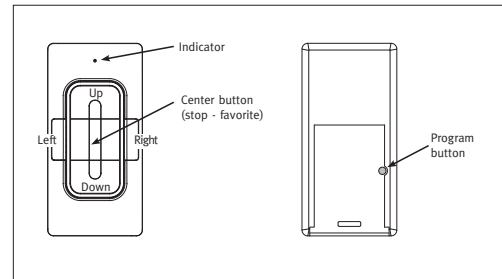
1. General information

The ABC-26 the wall switch to operate Coulisse automation blinds.

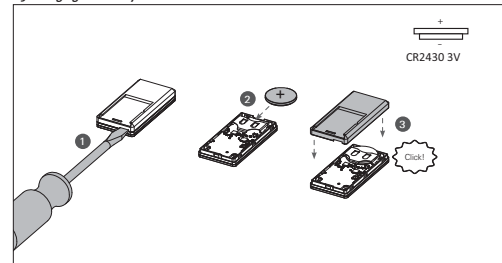
1.1 Performances

ABC-26	
Battery	CR2430 3.0V
Channels	1
Max. blinds remote	infinite
Range (inside building)	20m, 2 concrete walls
Frequency	2.4 GHz
Weight	40 grams

1.2 Buttons

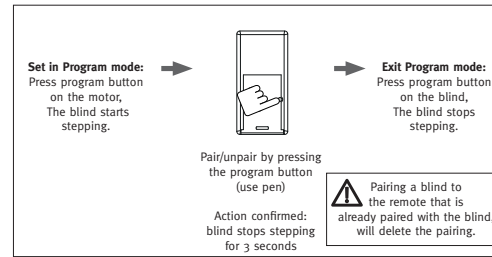


1.3 Changing the battery



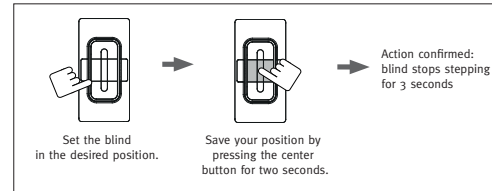
2. Programming

1. Programming a blind



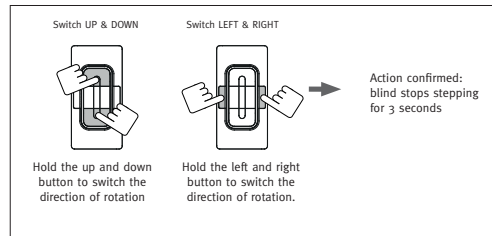
2. Set the favorite position

To program a blind, the blind must be in program mode. (Press program button on the motor, when blind is not stepping.)



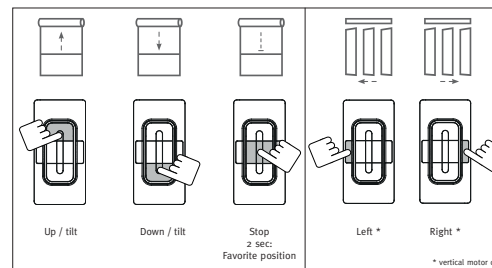
3. Switch the blind's direction of rotation

To program a blind, the blind must be in program mode. (Press program button on the motor, when blind is not stepping.) Example: when you press up on the remote and your blind moves down, you have to switch the rotation direction of the blind.

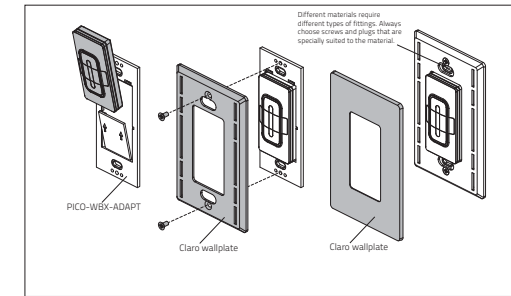


3. Operating

Operate a blind



4. Remote Holder



5. Tips & Troubleshooting

Please check www.coulisse.nl for the latest tips and troubleshooting guide.

6. Safety & Cleaning

6.1 Safety

WARNING: Do not make repairs yourself. Do not attempt to open the device or disassemble it. You run the risk of electric shock and voiding the limited warranty. No user-serviceable parts are inside.

- Do not let children play with the blind and/or remote control
- Do not paint the device
- Keep the device dry. Precipitation, humidity, and all types of liquids or moisture can contain minerals that will corrode electronic circuits. If your device does get wet, remove the battery, and allow the device to dry completely before replacing the battery.
- Do not drop, knock, or shake the device. Rough handling can break internal circuit boards.

6.2 Cleaning

Follow these general rules when cleaning the outside of the device and its components:

- Make sure the device is unplugged.
- Use a damp, soft, lint-free cloth. Avoid getting moisture in openings.
- Don't use aerosol sprays, solvents, alcohol, or abrasives.

7. Service & Support

WARNING: Do not make repairs yourself. Do not attempt to open the device or disassemble it. You run the risk of electric shock and voiding the limited warranty. No user-serviceable parts are inside.

Online Resources
For the latest information and updated manuals go to www.coulisse.nl.

Obtaining Warranty Service
First follow the advice in this booklet and then go to your local dealer. If the product appears to be damaged or does not function properly, go to your local dealer for instructions on how to obtain warranty service.

Disclaimer:

© Copyright Coulisse

All rights reserved. No part of this publication may be reproduced, stored in a retrieval system, or transmitted, in any form, by any means, electronic, mechanical, photocopying, recording, digital or otherwise without the written permission of the publisher.

Although this manual has been composed with the most care, Coulisse B.V. does not accept any responsibility for damage due to mistakes and/or faults in this manual.

Coulisse B.V. reserves the right to revise the manual and to revise and/or changes its content at any time, without obligation to notify any person or entity of such revisions or changes.

The most recent version replaces older versions of this manual. The most recent version is available at www.coulisse.nl or contact your Coulisse contact person.

We invite you to send remarks and comments about this manual to Coulisse at manual@coulisse.nl.

coulisse

Coulisse B.V., Vonderweg 48, 7468 DC Enter, The Netherlands

ABC-26_R01_G80

FCC STATEMENT

1. This device complies with Part 15 of the FCC Rules. Operation is subject to the following two conditions:

- (1) This device may not cause harmful interference.
 - (2) This device must accept any interference received, including interference that may cause undesired operation.
2. Changes or modifications not expressly approved by the party responsible for compliance could void the user's authority to operate the equipment.

NOTE: This equipment has been tested and found to comply with the limits for a Class B digital device, pursuant to Part 15 of the FCC Rules. These limits are designed to provide reasonable protection against harmful interference in a residential installation.

This equipment generates uses and can radiate radio frequency energy and, if not installed and used in accordance with the instructions, may cause harmful interference to radio communications. However, there is no guarantee that interference will not occur in a particular installation. If this equipment does cause harmful interference to radio or television reception, which can be determined by turning the equipment off and on, the user is encouraged to try to correct the interference by one or more of the following measures:

Reorient or relocate the receiving antenna.

Increase the separation between the equipment and receiver.

Connect the equipment into an outlet on a circuit different from that to which the receiver is connected.

Consult the dealer or an experienced radio/TV technician for help.