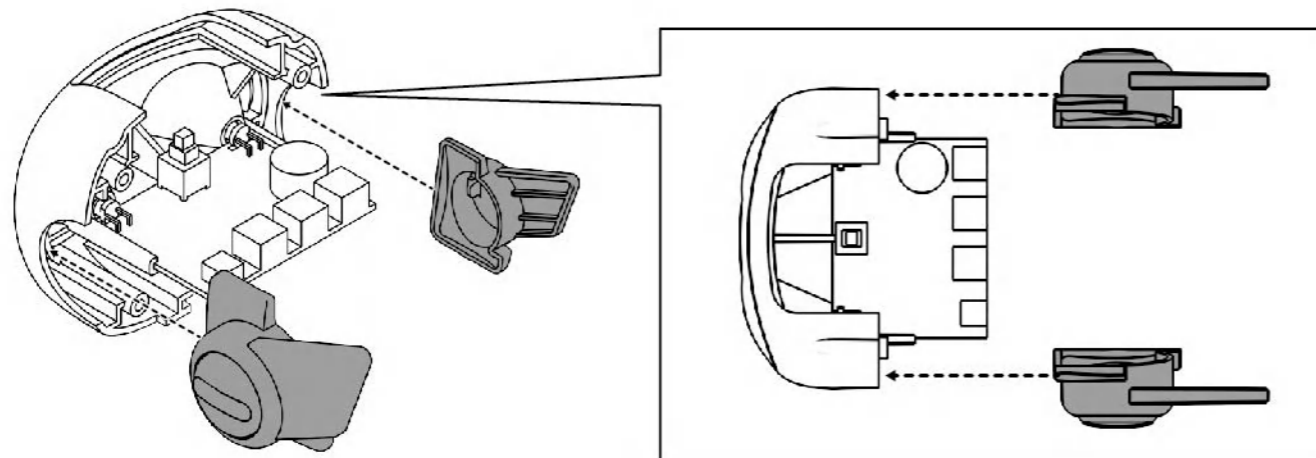
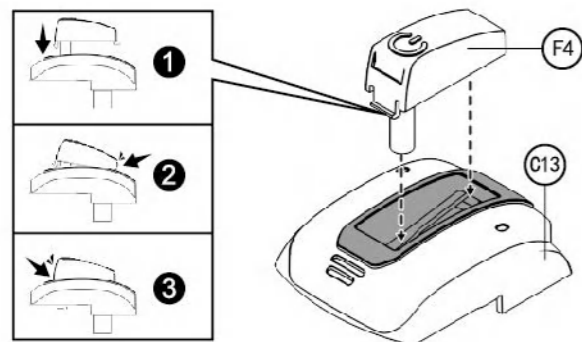


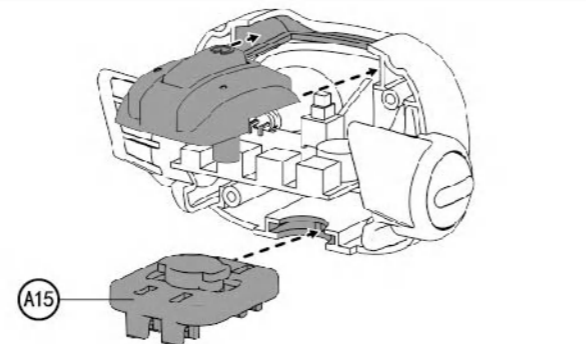
5



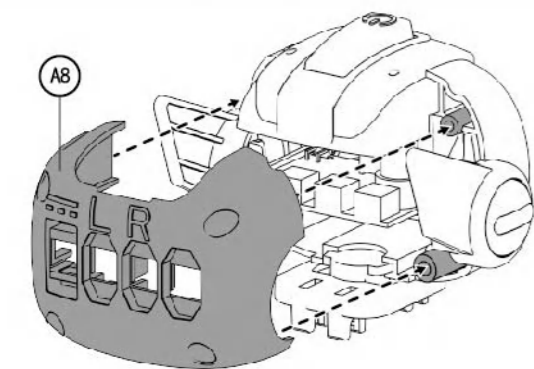
6



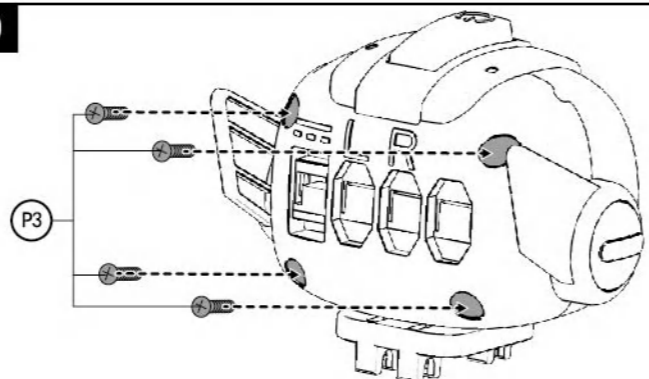
7



8

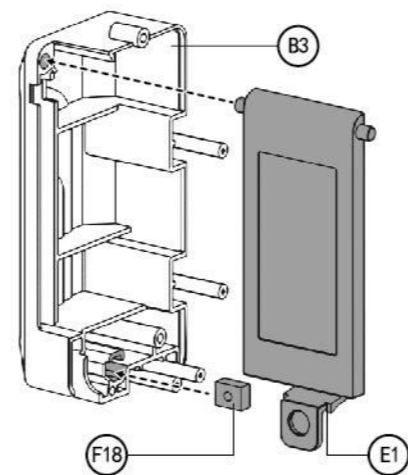


9

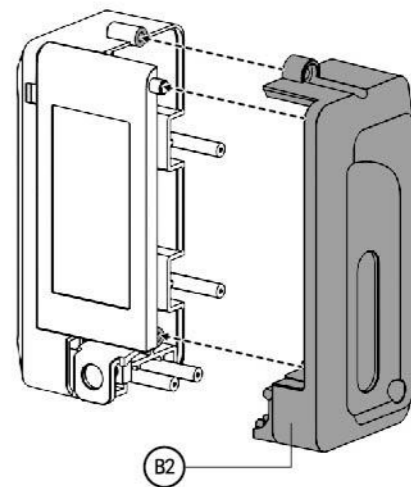


电池盒组装 Battery box assembly

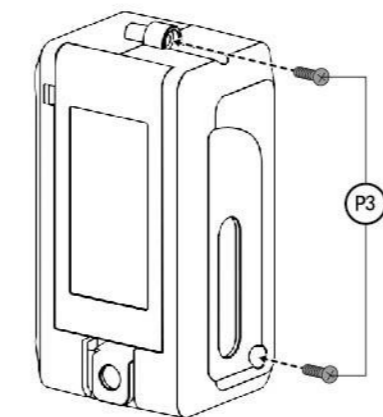
1



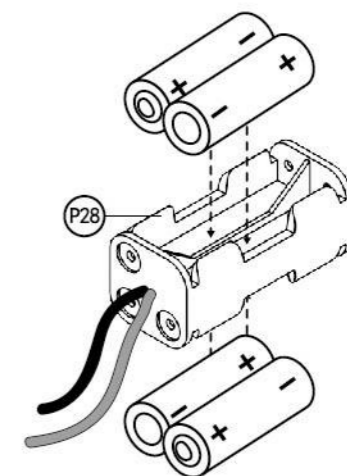
2

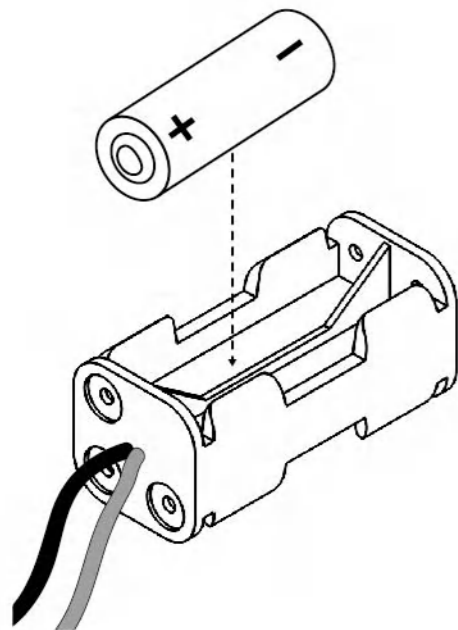


3



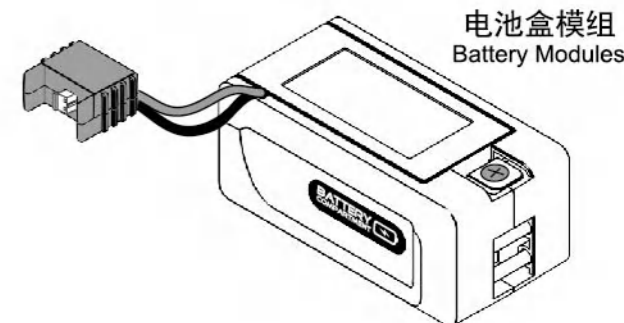
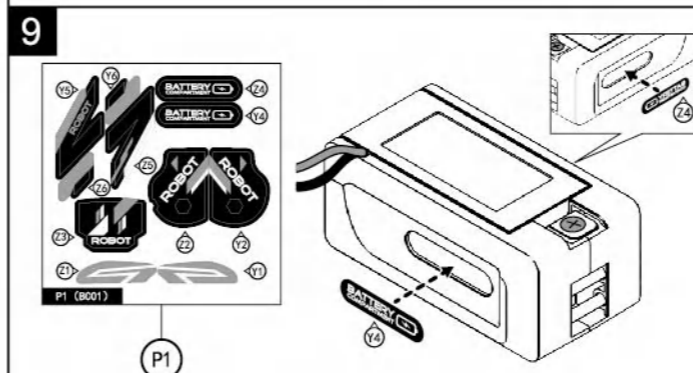
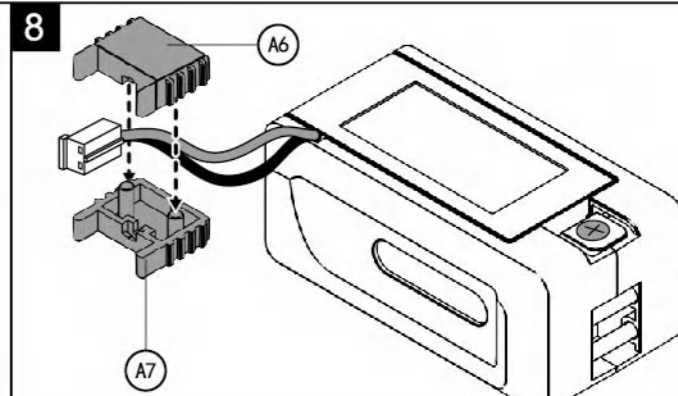
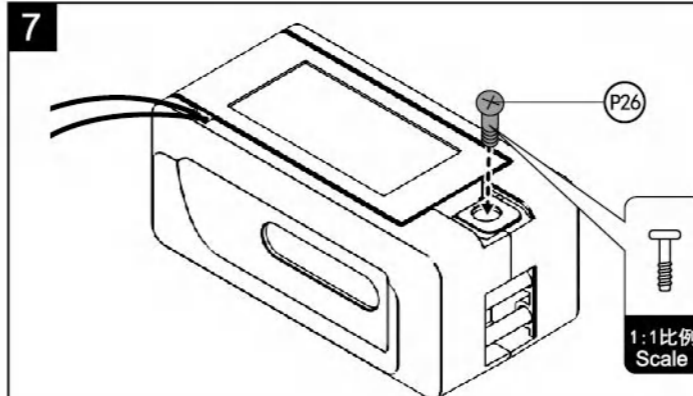
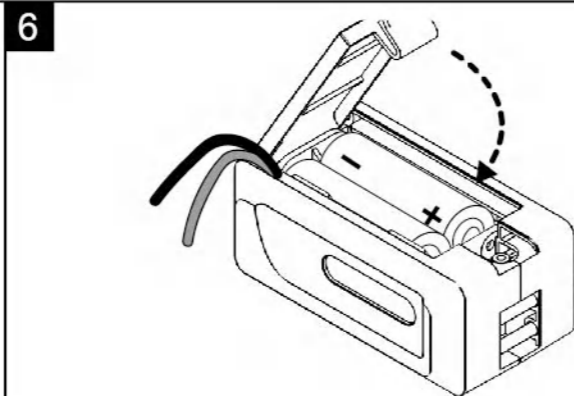
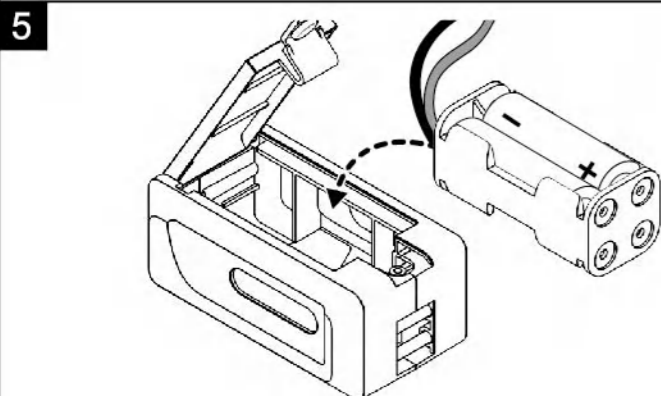
4



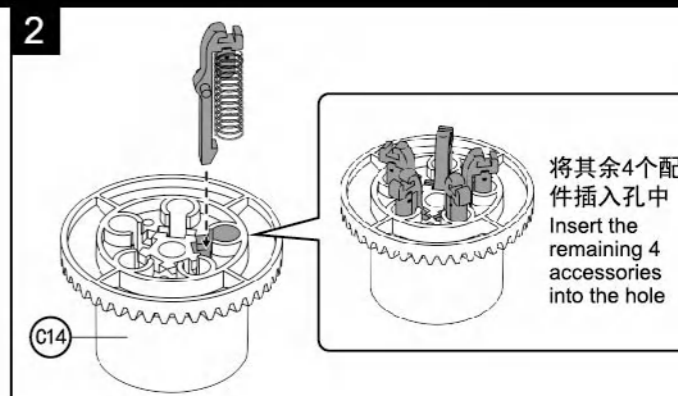
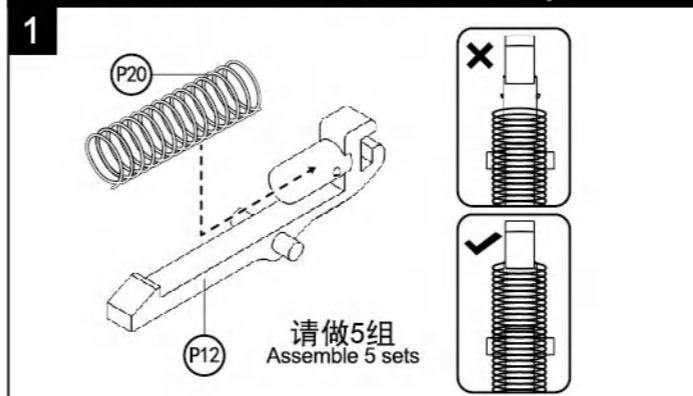


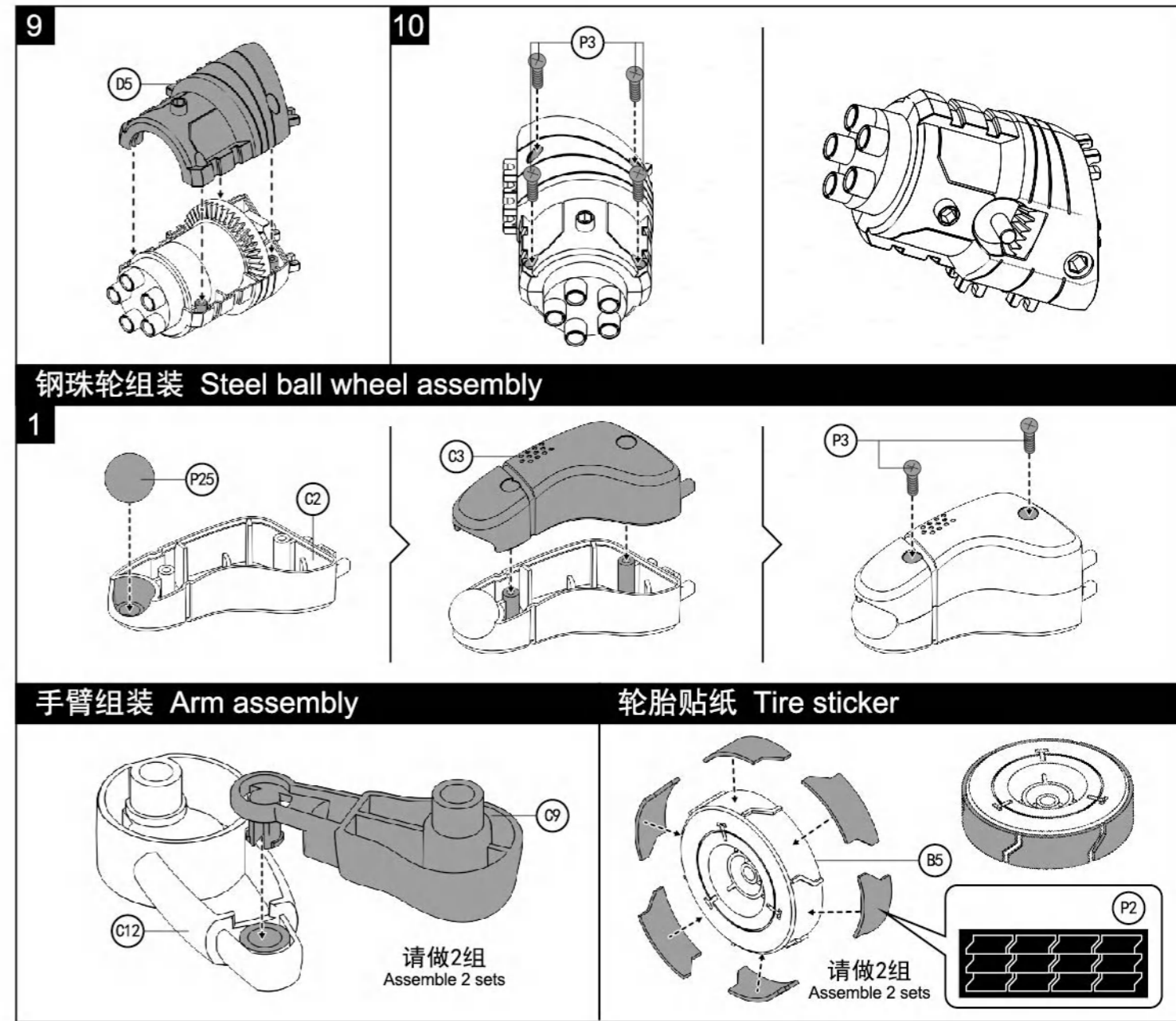
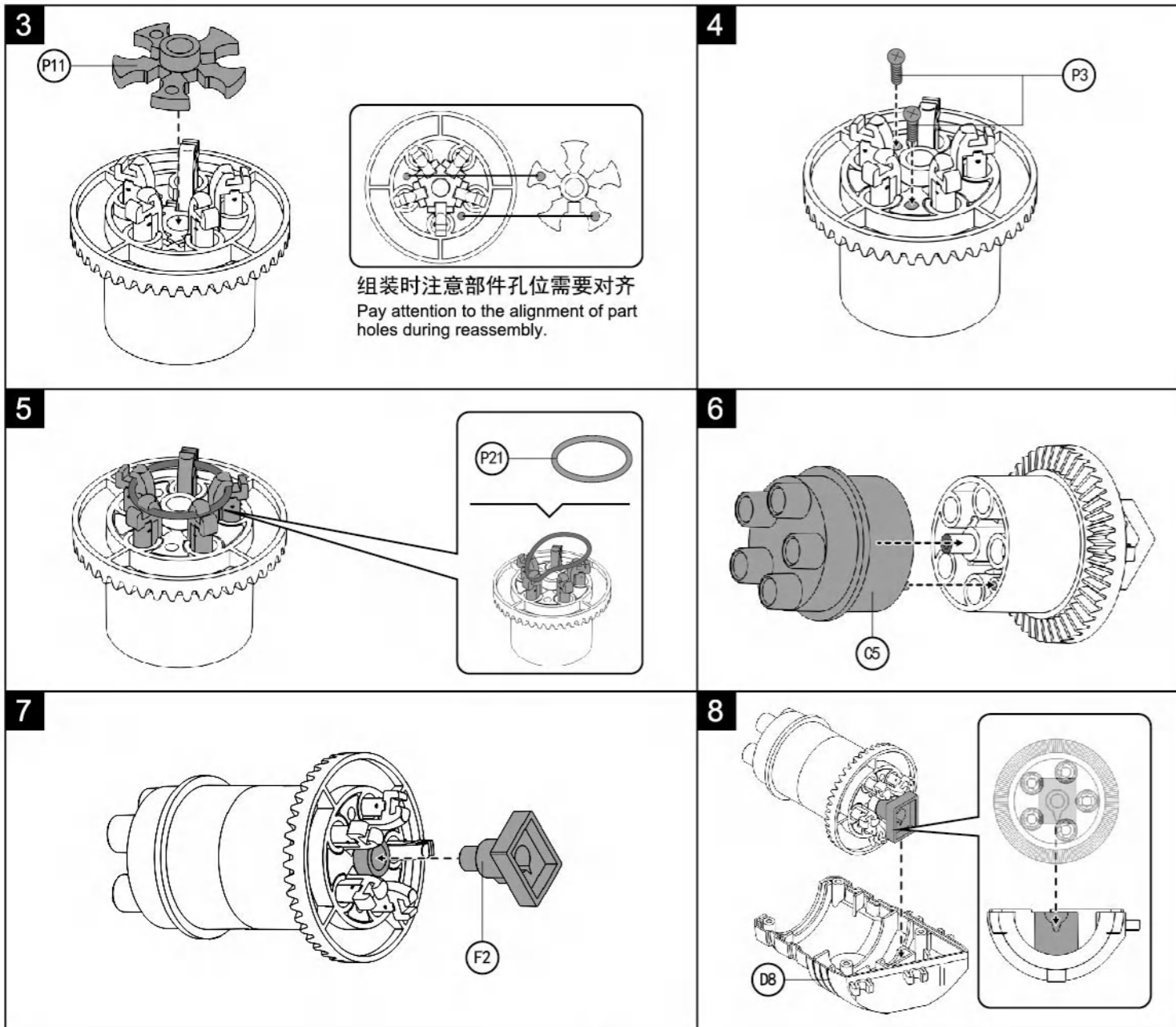
- 电池移除或更换应由成人或在成人监督下进行。
- 请避免电池或电池连接器端子短路。
- 电池长期不用或电力耗尽时请取出以避免电池漏液。
- 请勿混用新旧电池及不同厂牌、种类的电池，以免造成危险或电器损耗。
- 请勿混合碱性、碳锌电池或充电电池使用。
- 电池放入前请先确认正确正负极性方向。
- 请勿试图对非充电电池进行充电。
- 充电电池应在成人监督下进行充电。
- 本产品不能连接多于一个电源。
- 充电电池在充电前应从玩具中取出。

- Battery removal or replacement should be performed by an adult or under an adult meal.
- Avoid short circuits from battery or battery connector terminals.
- Remove the battery when it is not used for a long time or when power runs out to avoid leakage.
- Do not mix new day batteries with different brands and types of batteries, so as not to Causing danger or electrical loss.
- Do not mix shouting, carbon-zinc batteries or rechargeable batteries.
- Please confirm the correct direction of positive and negative polarity before placing the battery.
- Do not attempt to charge a non-rechargeable battery.
- Rechargeable batteries should be charged under adult supervision.
- This product cannot be connected more than A power supply.
- The rechargeable battery should be removed from the toy before charging.



发射炮组装 Launcher assembly





钢珠轮组装 Steel ball wheel assembly

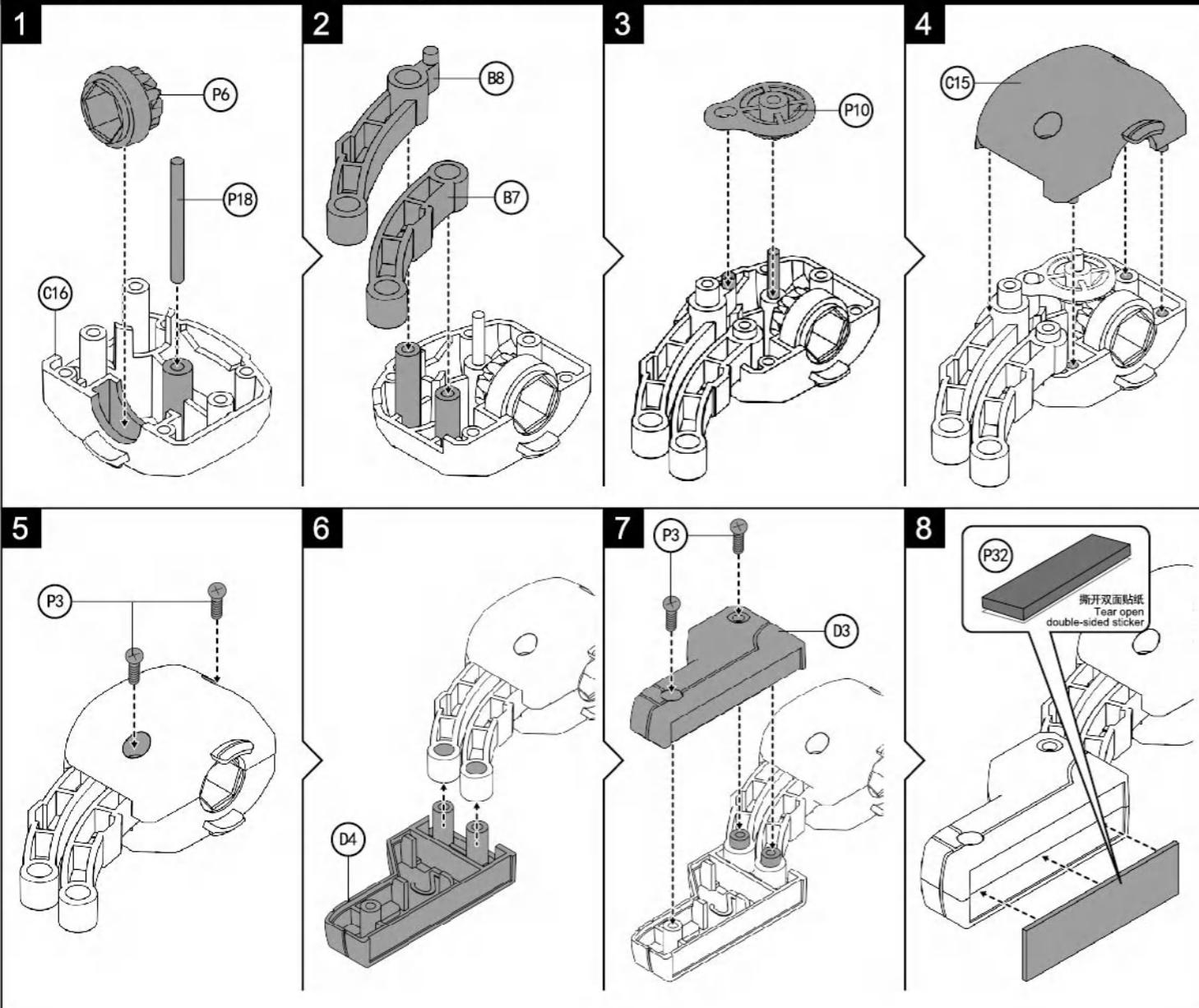
手臂组装 Arm assembly

轮胎贴纸 Tire sticker

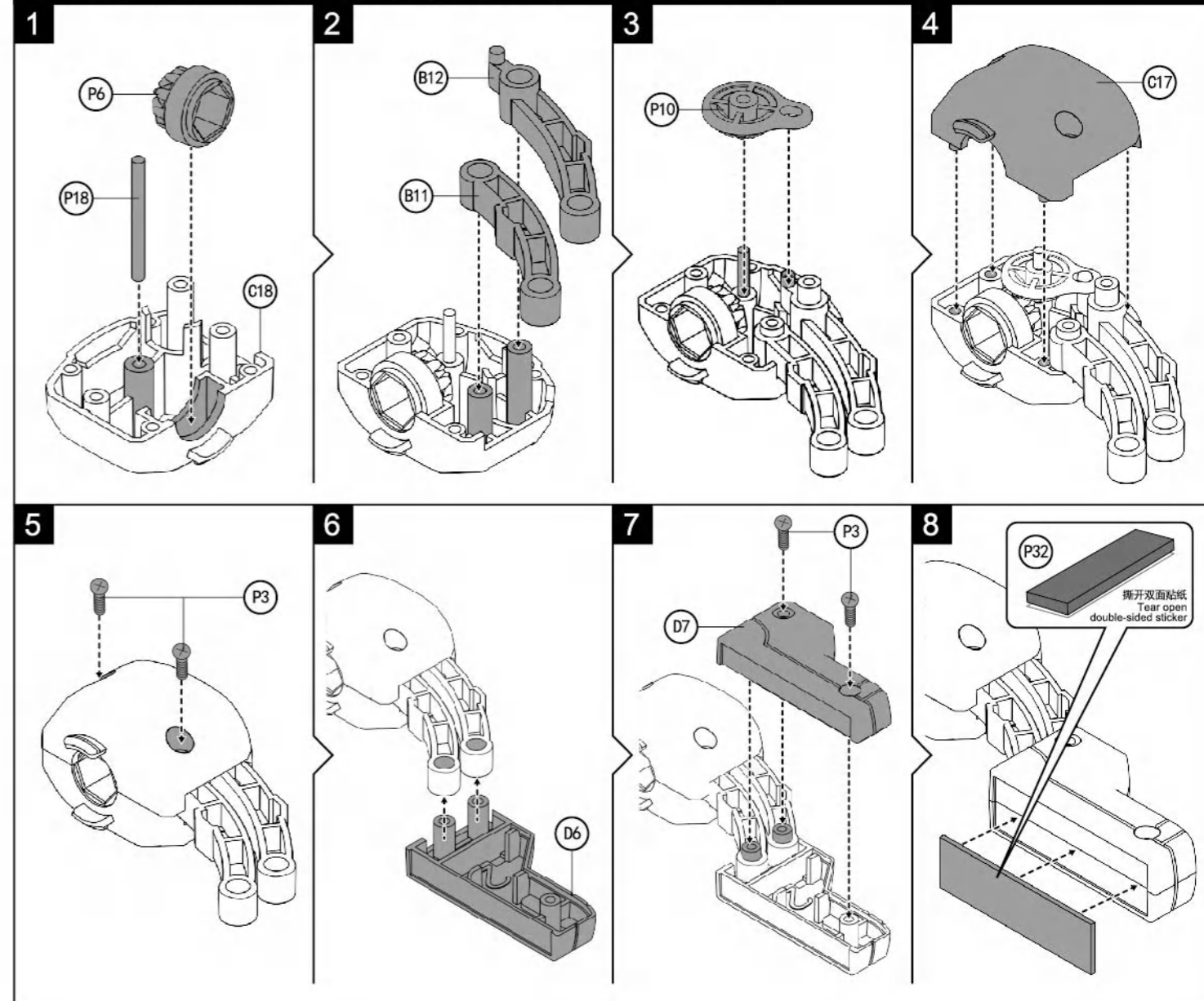
请做2组
Assemble 2 sets

请做2组
Assemble 2 sets

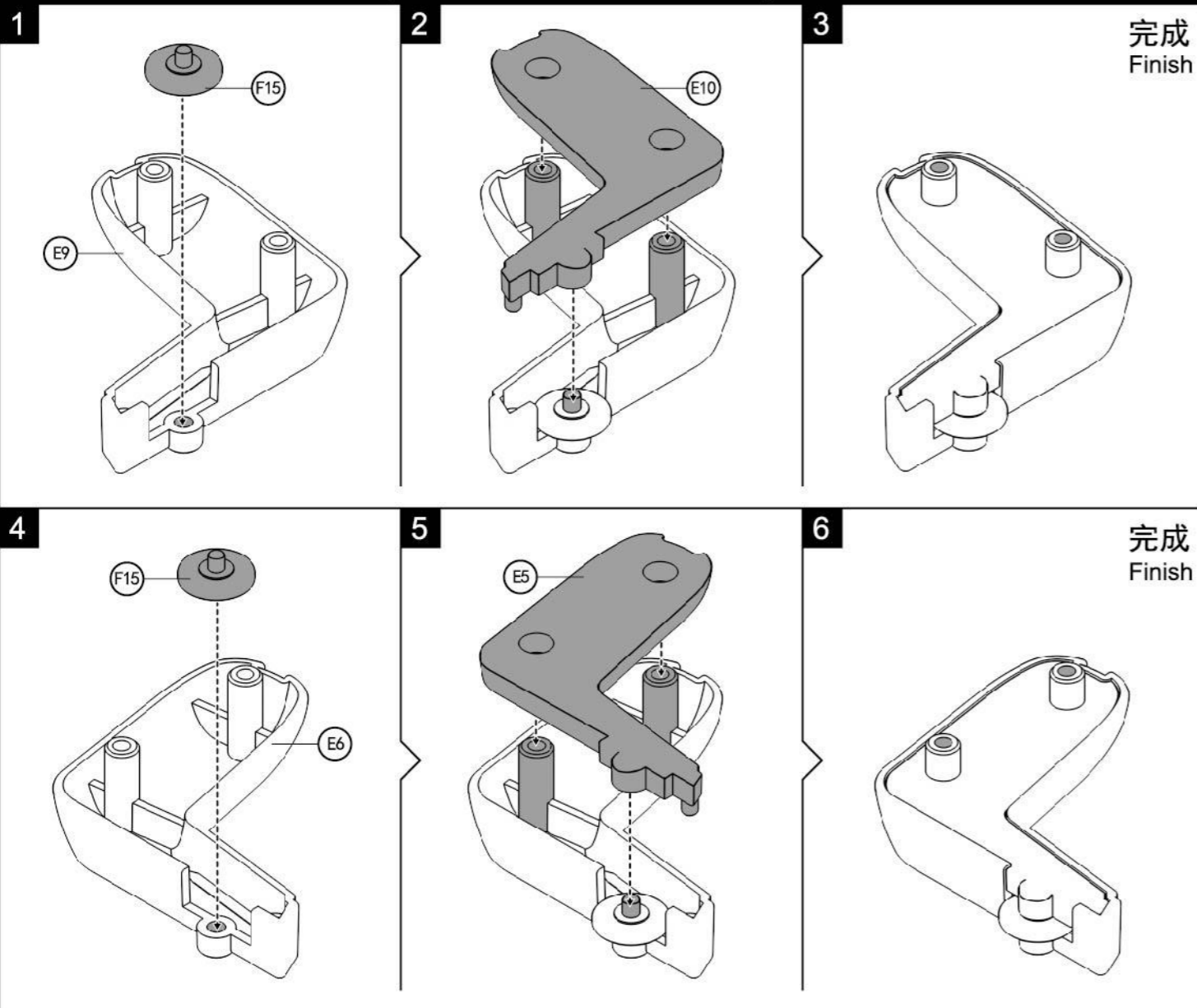
夹物机器人左手臂组装 Clamp robot left arm assembly



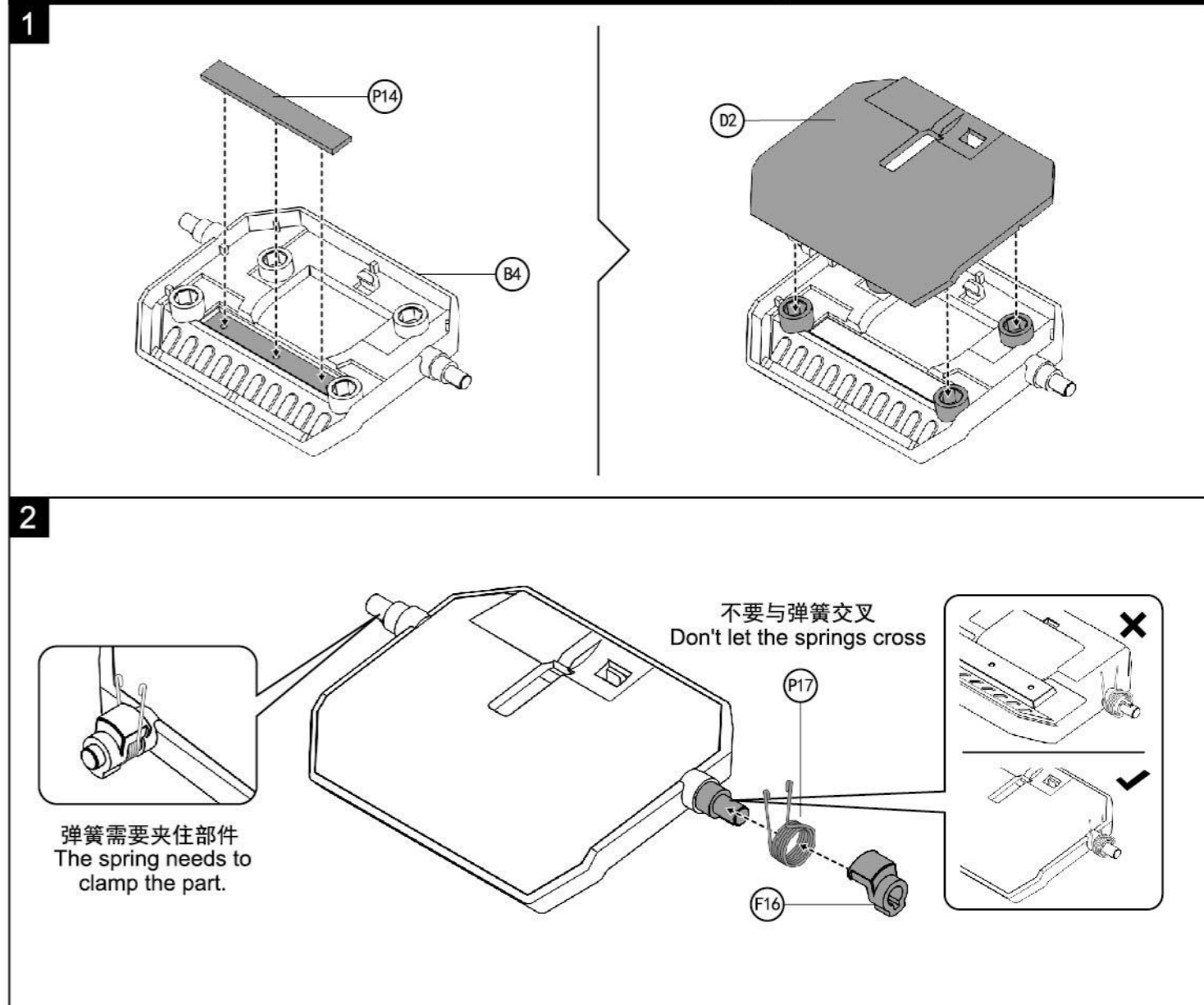
夹物机器人右手臂组装 Clamp robot right arm assembly



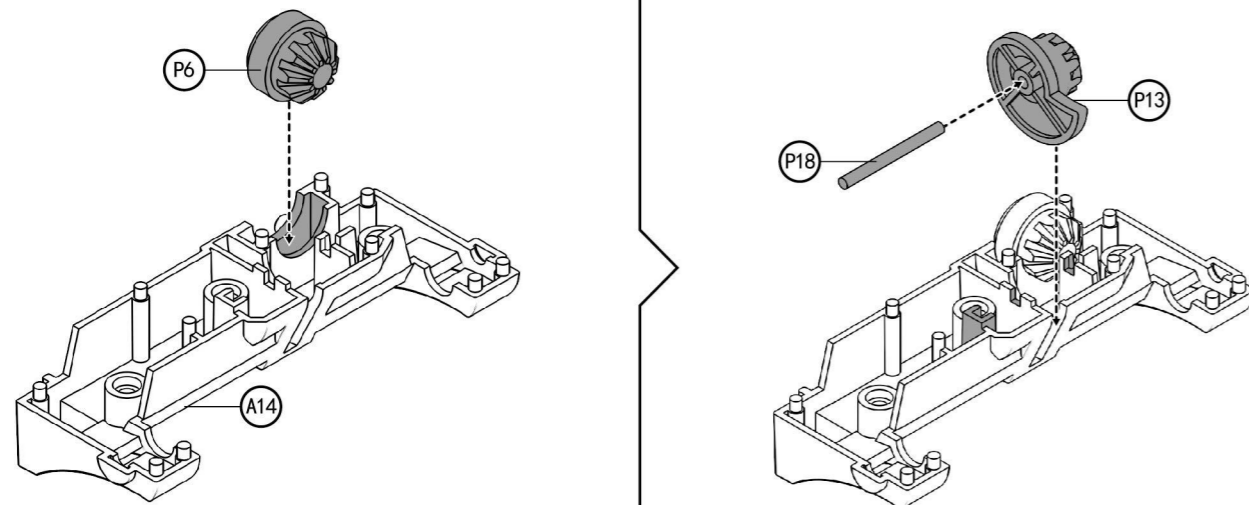
夹物机器人前轮组装 Clamp robot front wheel assembly



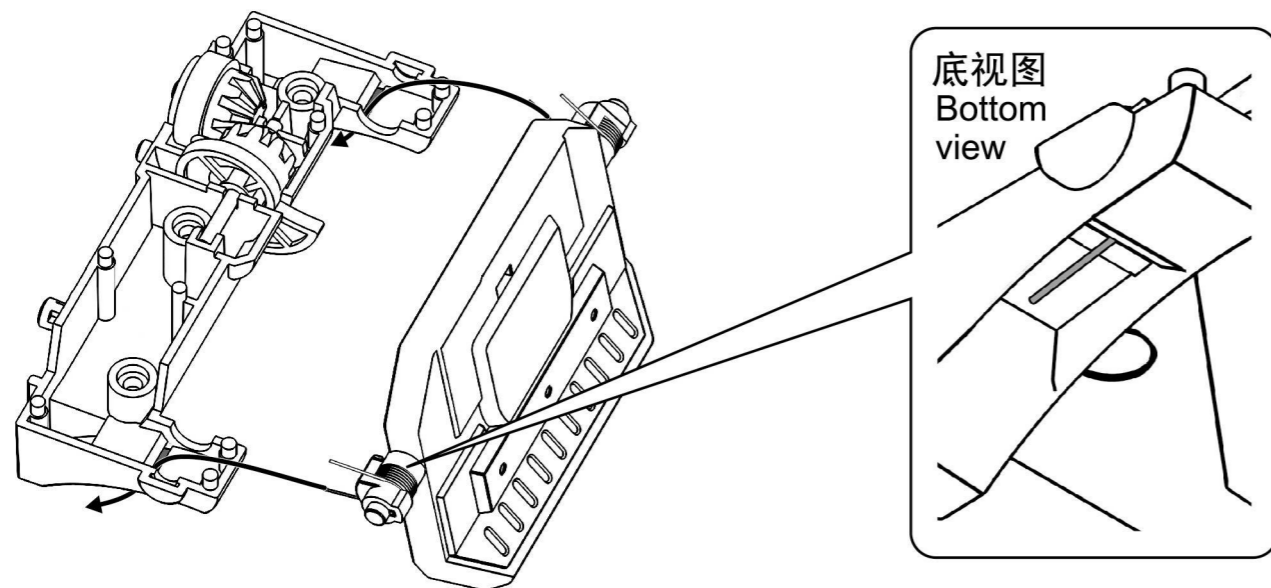
足球板与足球组装 Football board and football assembly



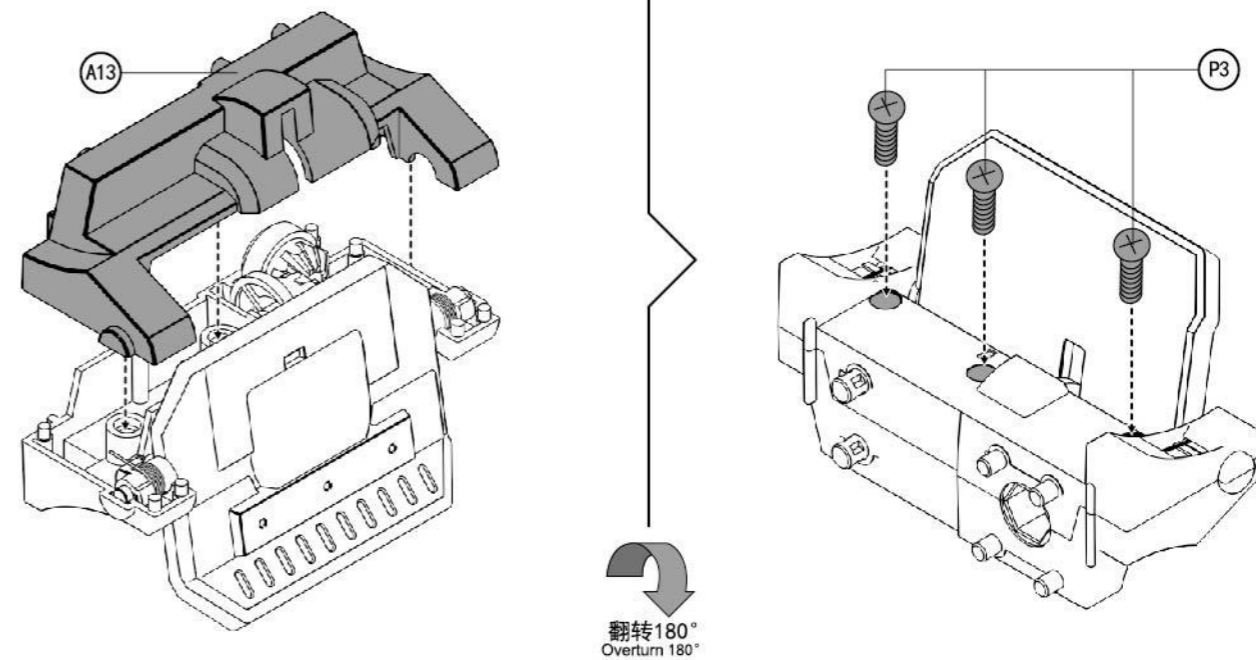
3



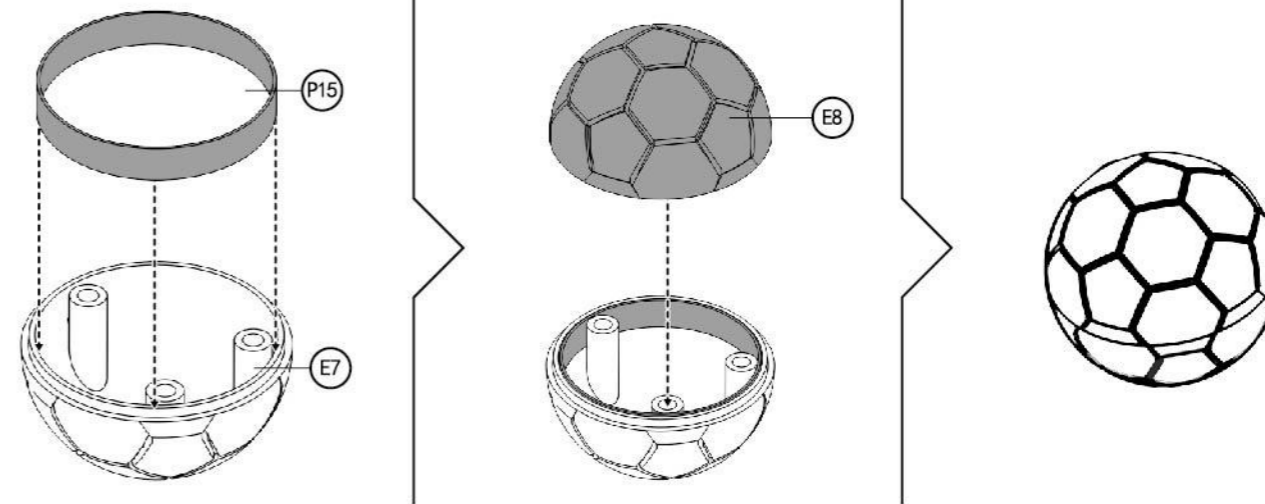
4



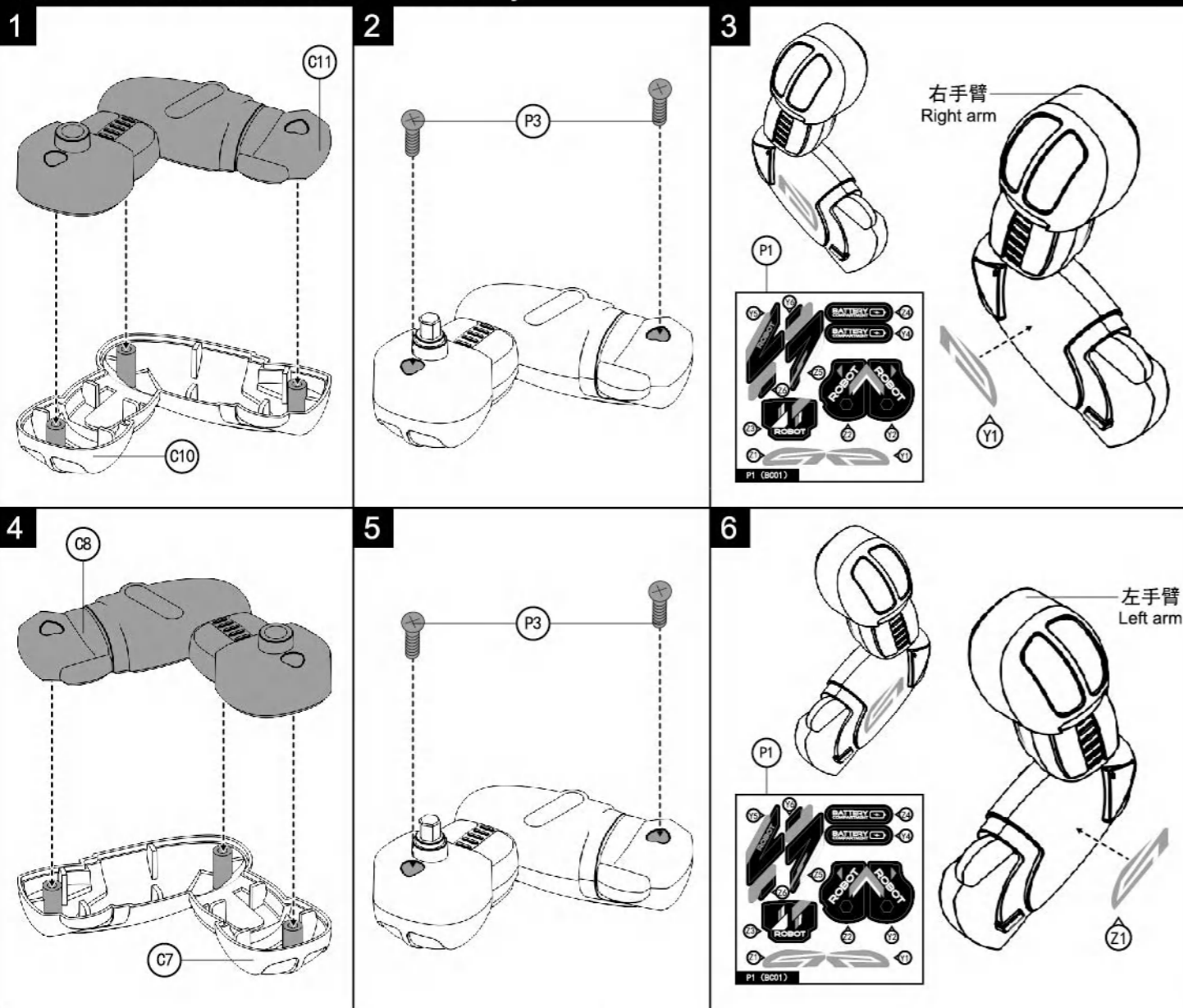
5



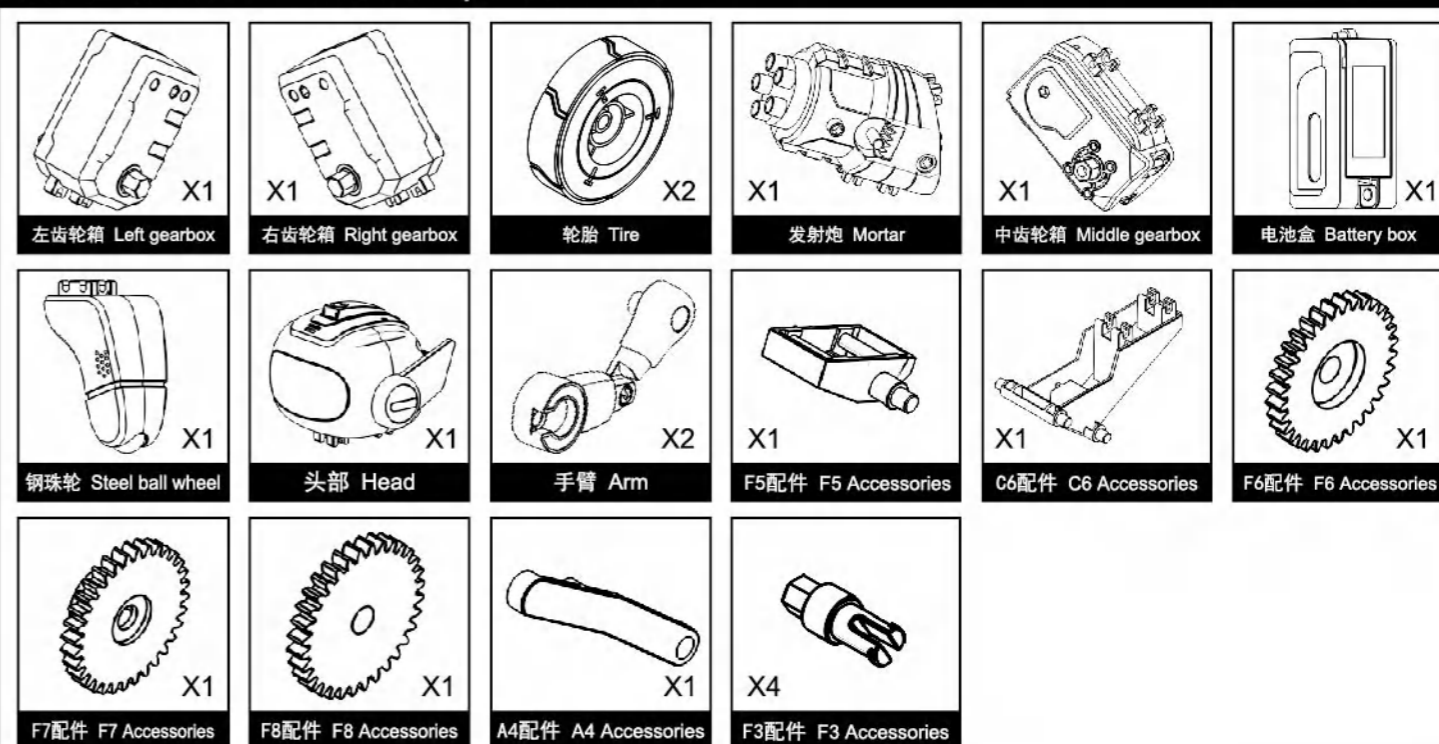
6



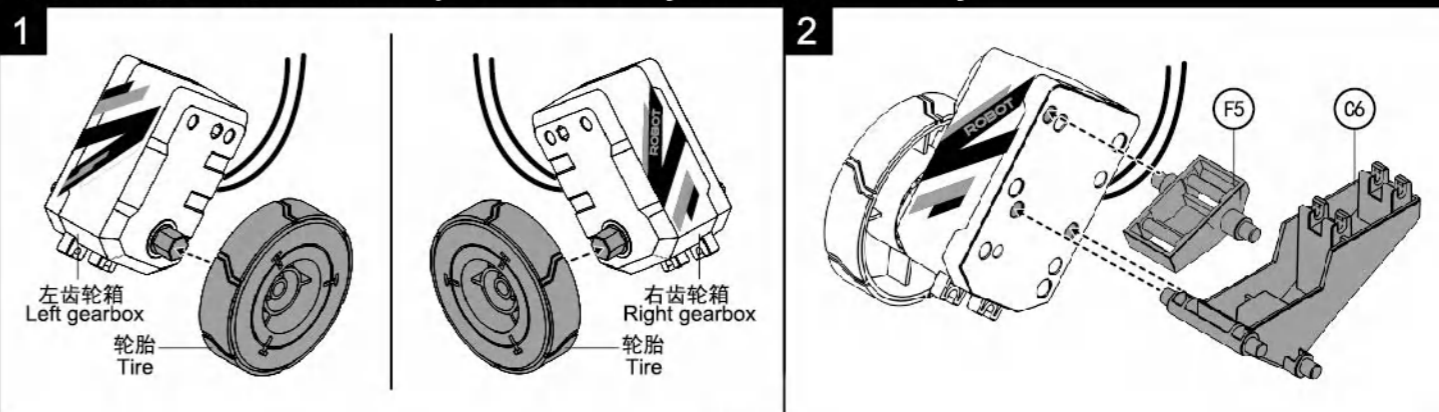
足球手臂组装 Football arm assembly



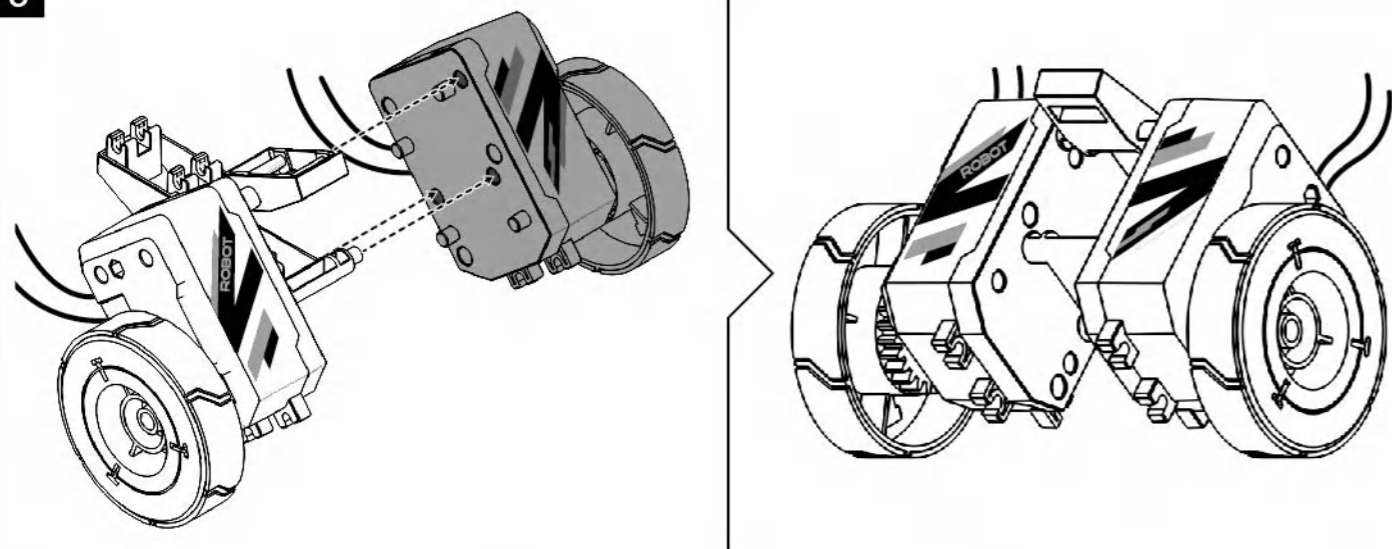
阻击神射手清单 List of sniper shooters



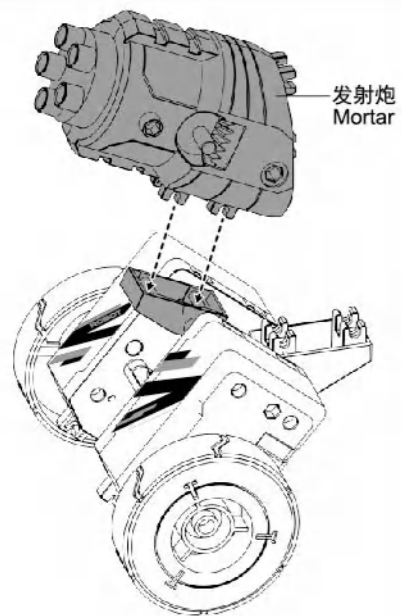
阻击神射手合成组装 Sniper Shooter Synthesis Assembly



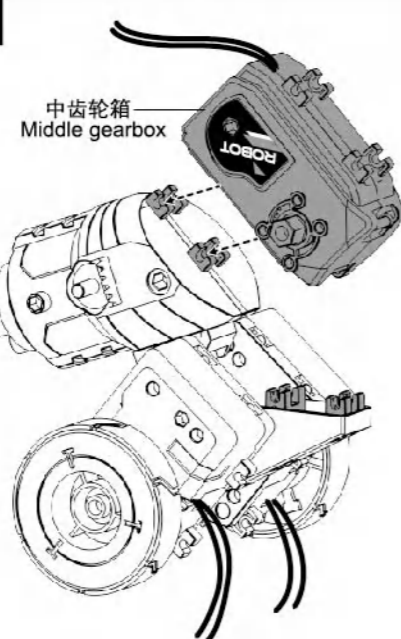
3



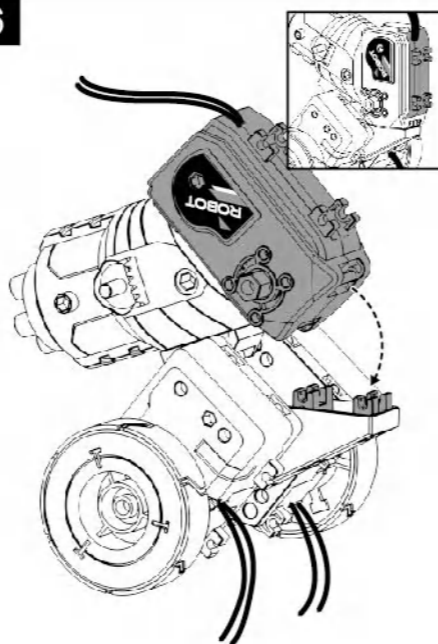
4



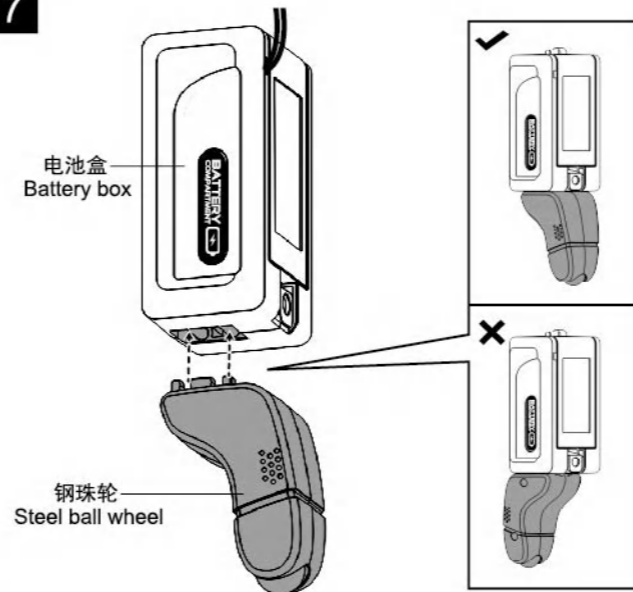
5



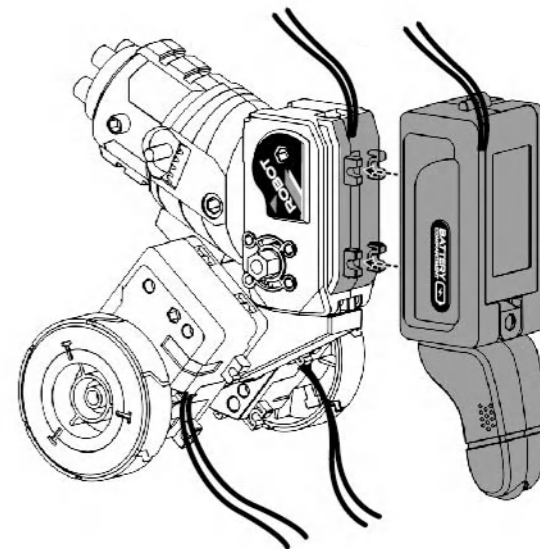
6



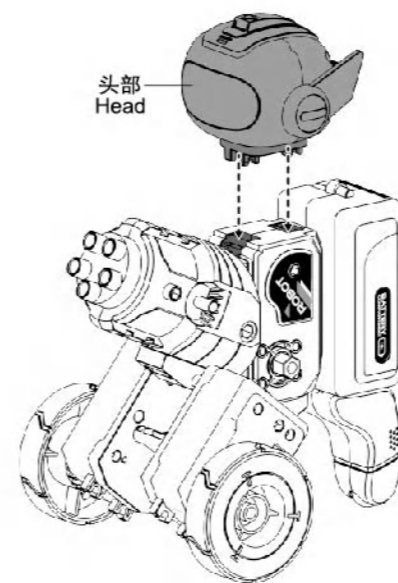
7



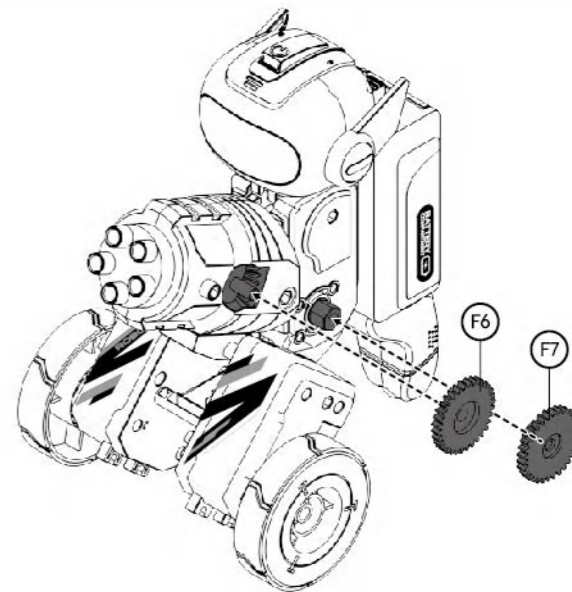
8



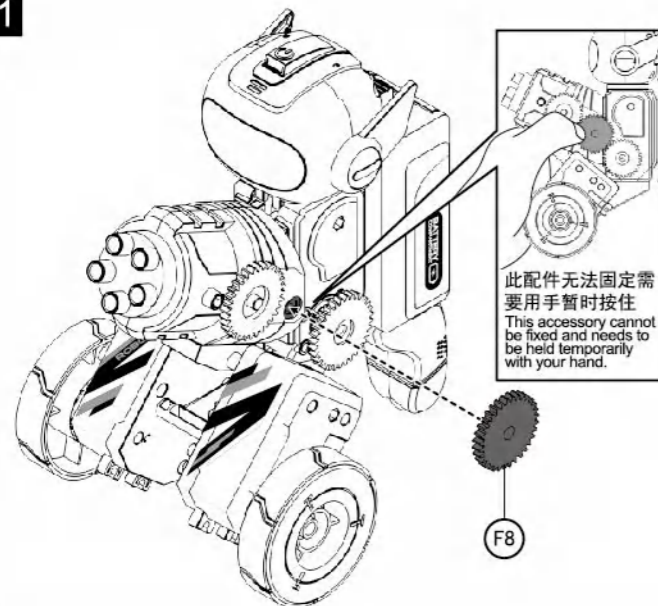
9



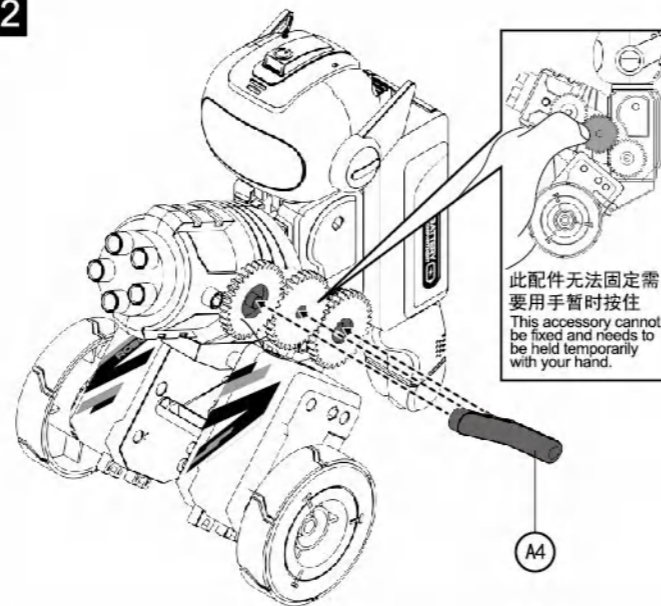
10



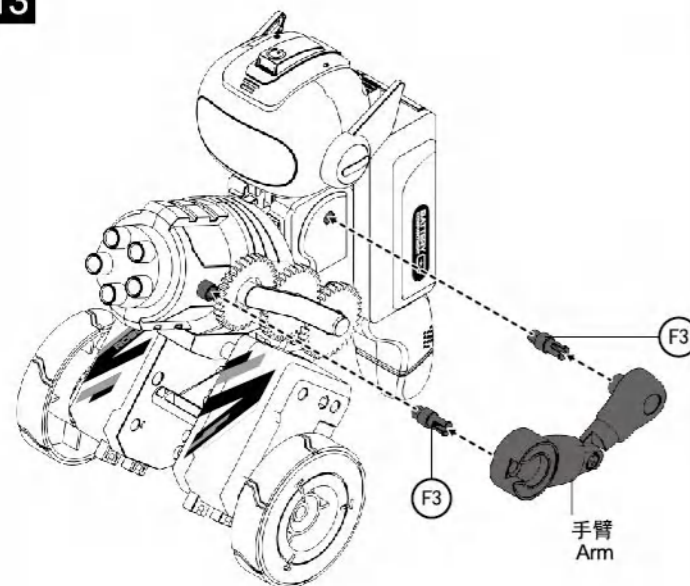
11



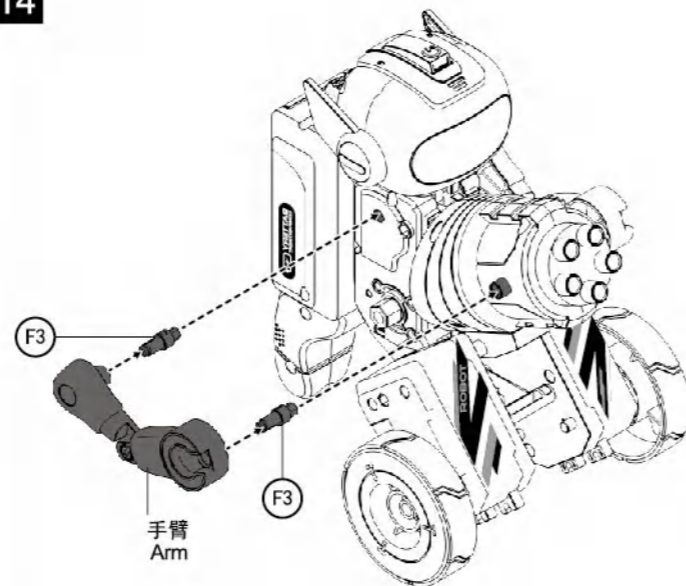
12



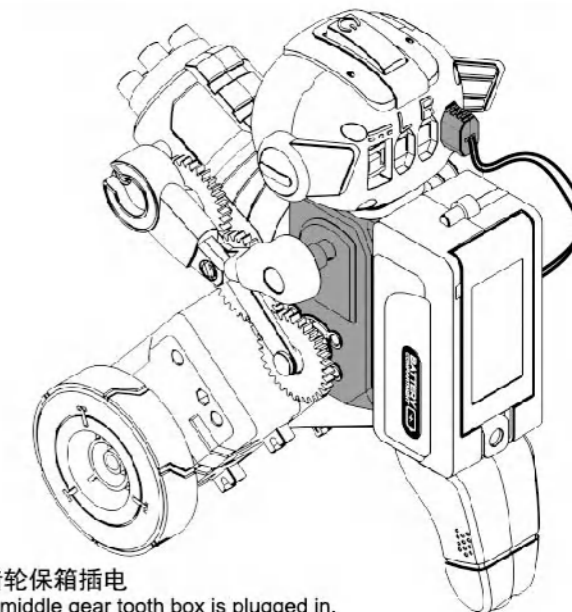
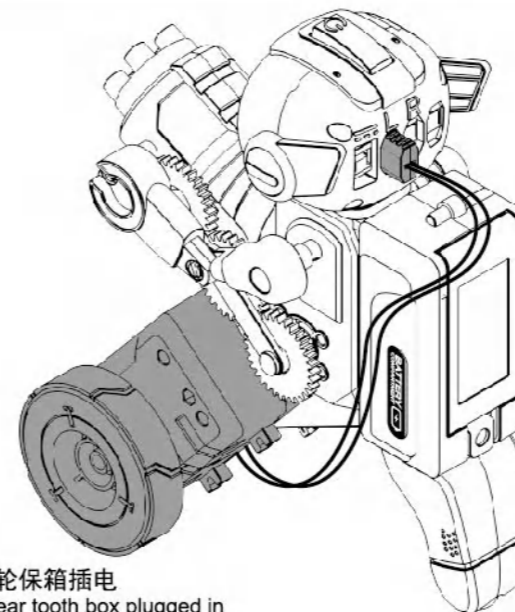
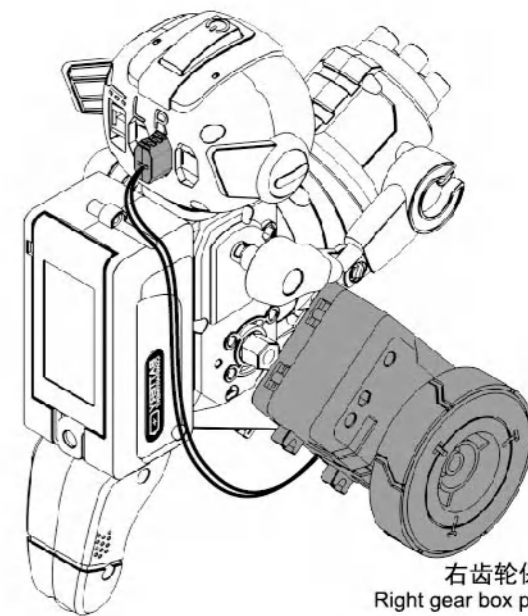
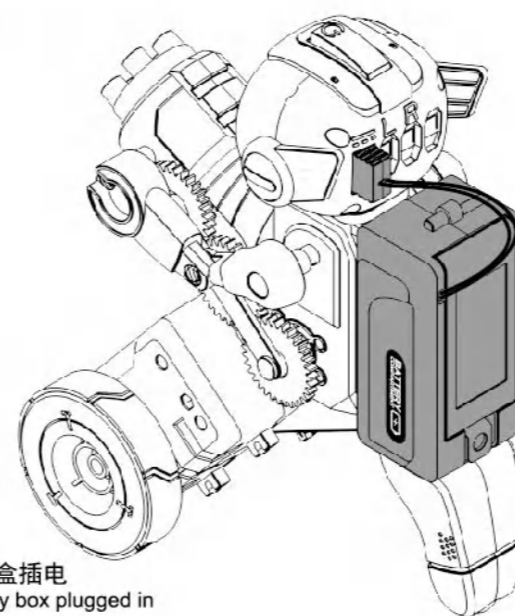
13

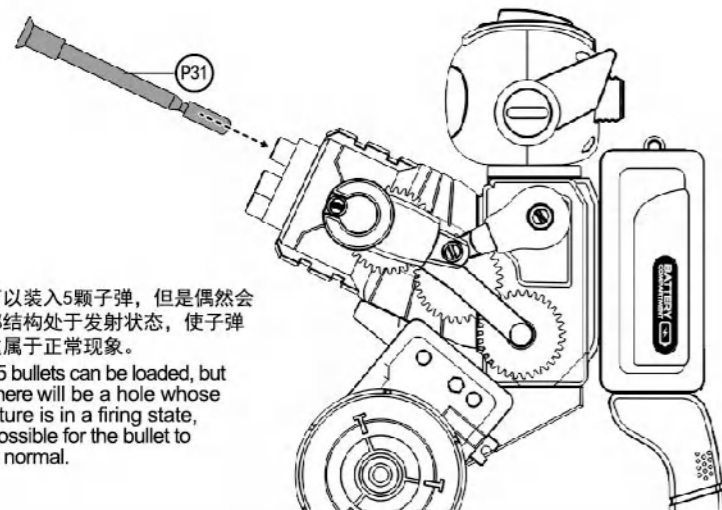


14

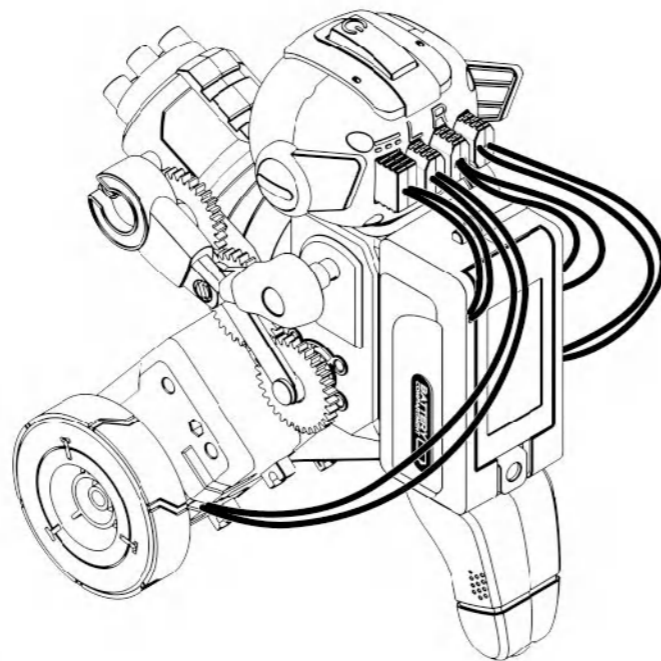
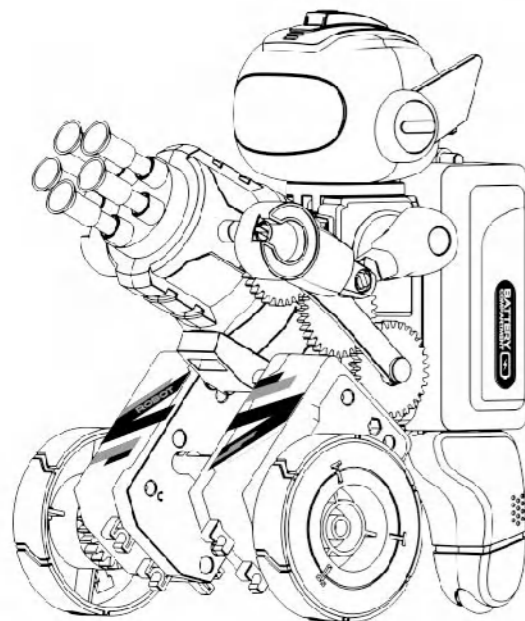
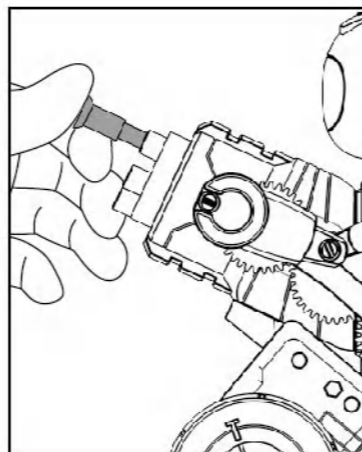


15

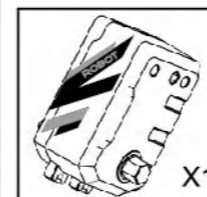




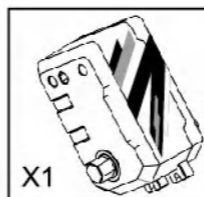
提示：总共可以装入5颗子弹，但是偶尔会有一个孔内部结构处于发射状态，使子弹无法装入，这属于正常现象。
Tip: A total of 5 bullets can be loaded, but occasionally there will be a hole whose internal structure is in a firing state, making it impossible for the bullet to load, which is normal.



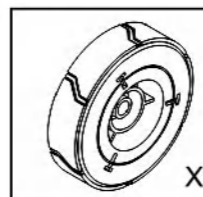
夹物小能手清单 List of clamp robots



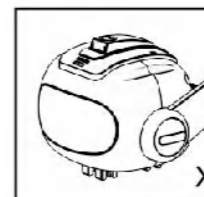
左齿轮箱
Left gearbox



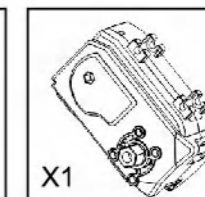
右齿轮箱
Right gearbox



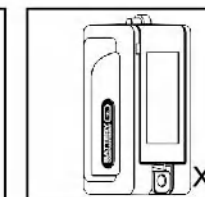
轮胎
Tire



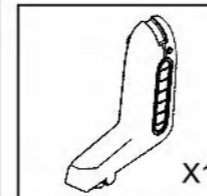
头部
Head



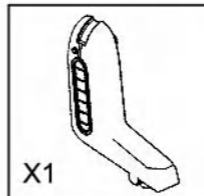
中齿轮箱
Middle gearbox



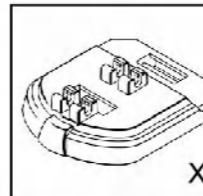
电池盒
Battery box



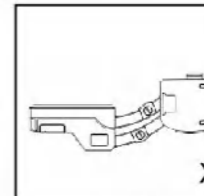
夹物左前轮
Clamp left front wheel



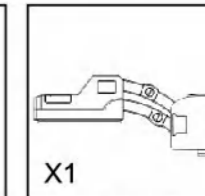
夹物右前轮
Clamp right front wheel



B6配件
B6 Accessories



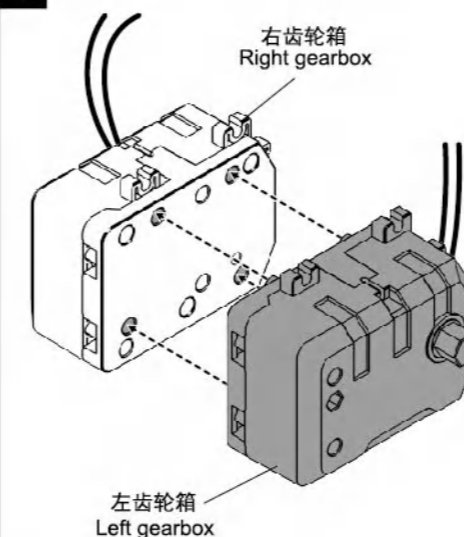
左手臂
Left arm



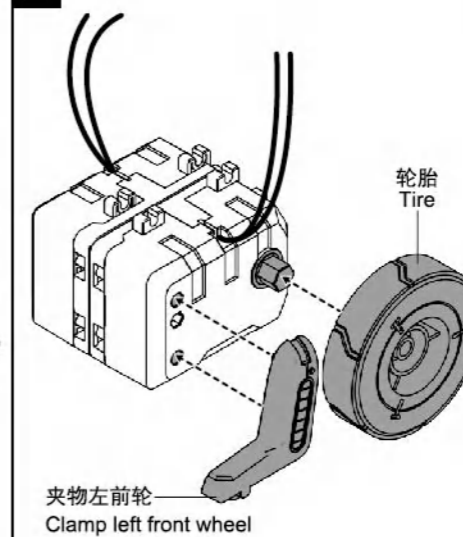
右手臂
Right arm

夹物小能手合成组装 Synthetic assembly of clamp robot

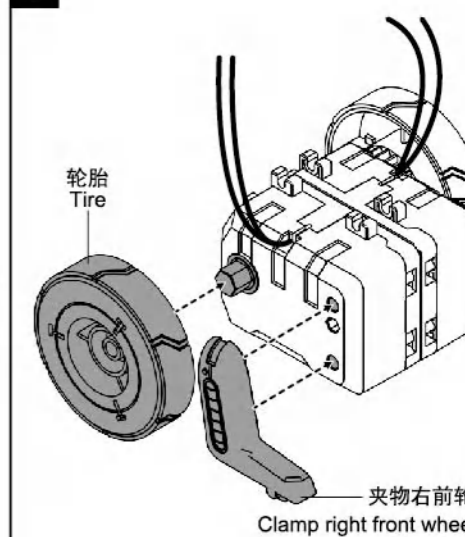
1



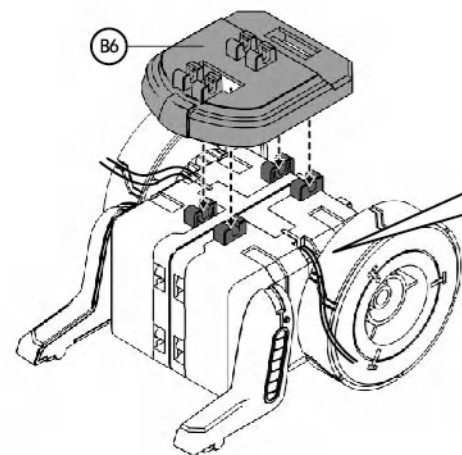
2



3

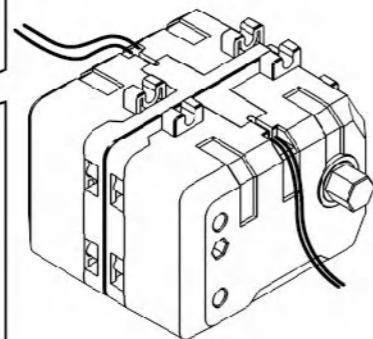


4

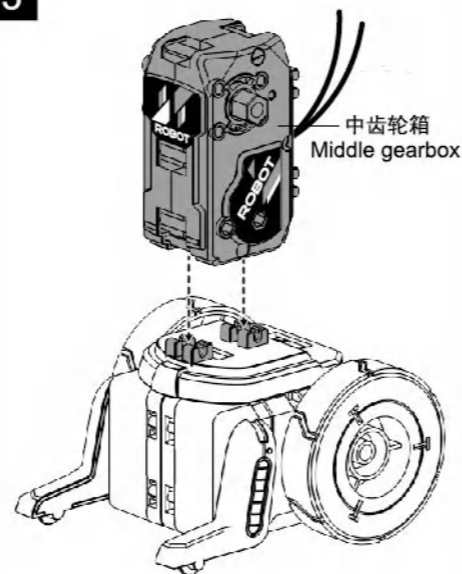


电线向左右两侧分开

The wires are separated to the left and right sides.

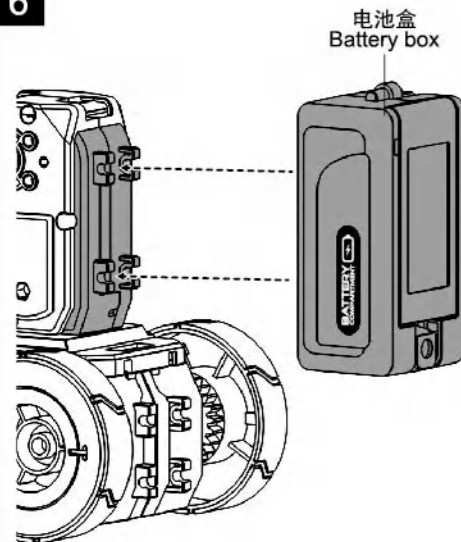


5



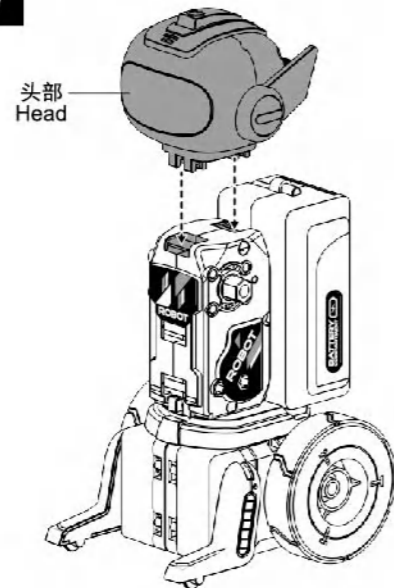
中齿轮箱
Middle gearbox

6

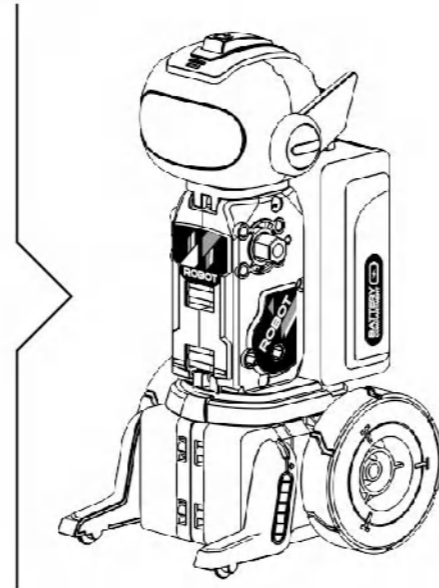


电池盒
Battery box

7



头部
Head



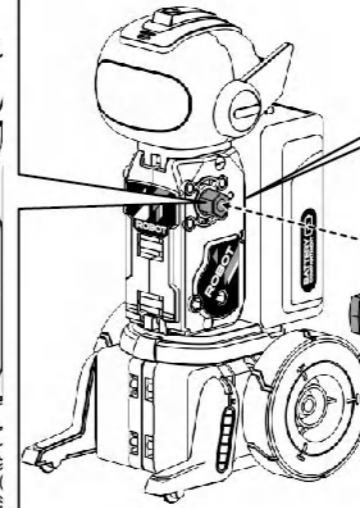
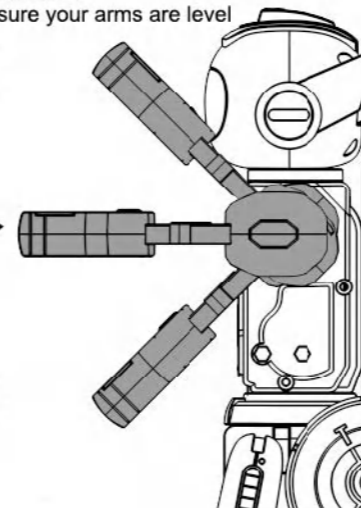
8

手臂一定要水平
Make sure your arms are level

✗

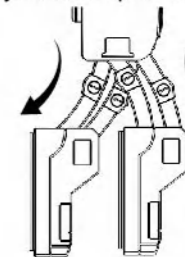
✓

✗



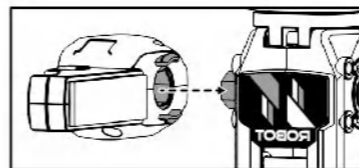
左手臂
Left arm

手臂要张开
Keep your arms spread out

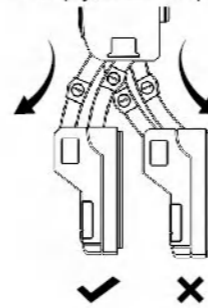


✗ ✓

9

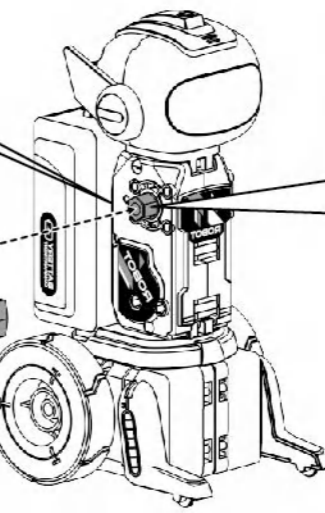
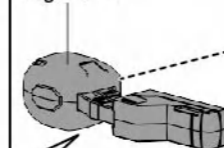


手臂要张开
Keep your arms spread out



✓ ✗

右手臂
Right arm



手臂一定要水平
Make sure your arms are level

✗

✓

✗

