

Figure 5
With Rear Camera, General Appearance of the EUT



Figure 6
With Rear Camera, Inside of the EUT



Figure 7
With Rear Camera, Component side of the PCB

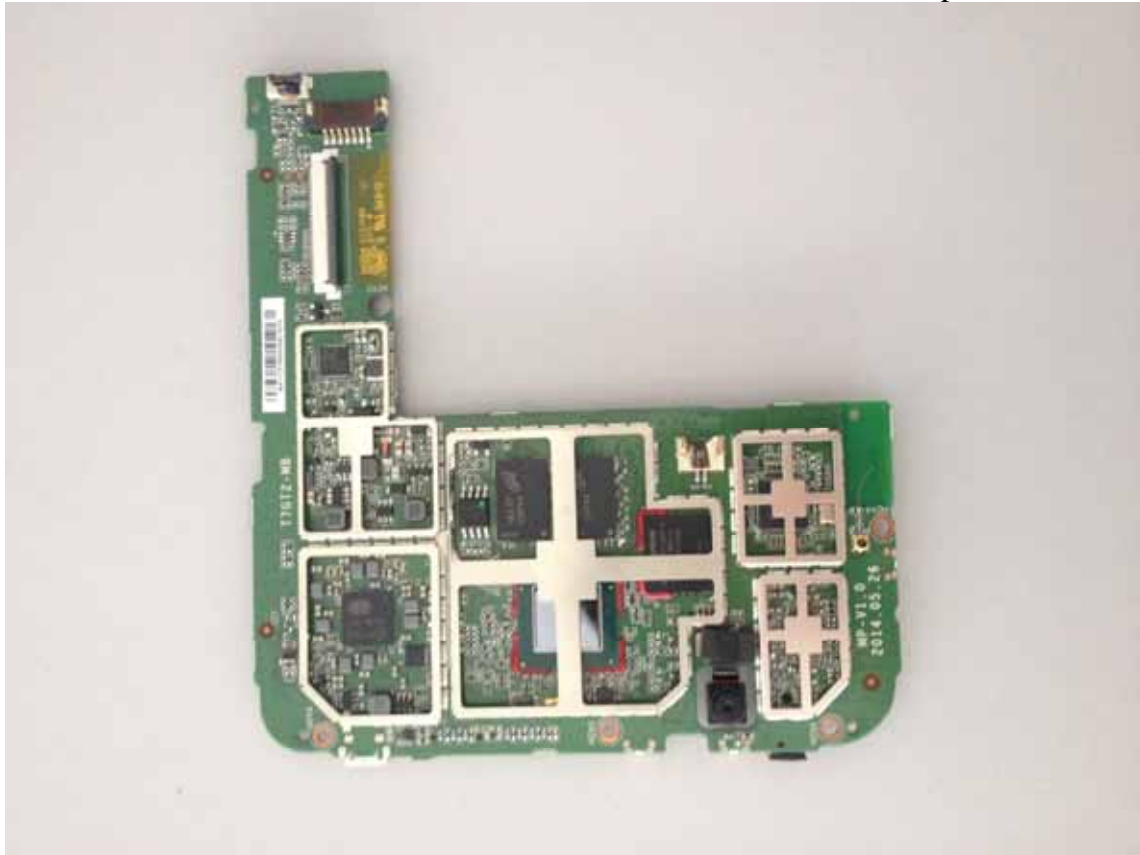


Figure 8
With Rear Camera, Component side of the PCB

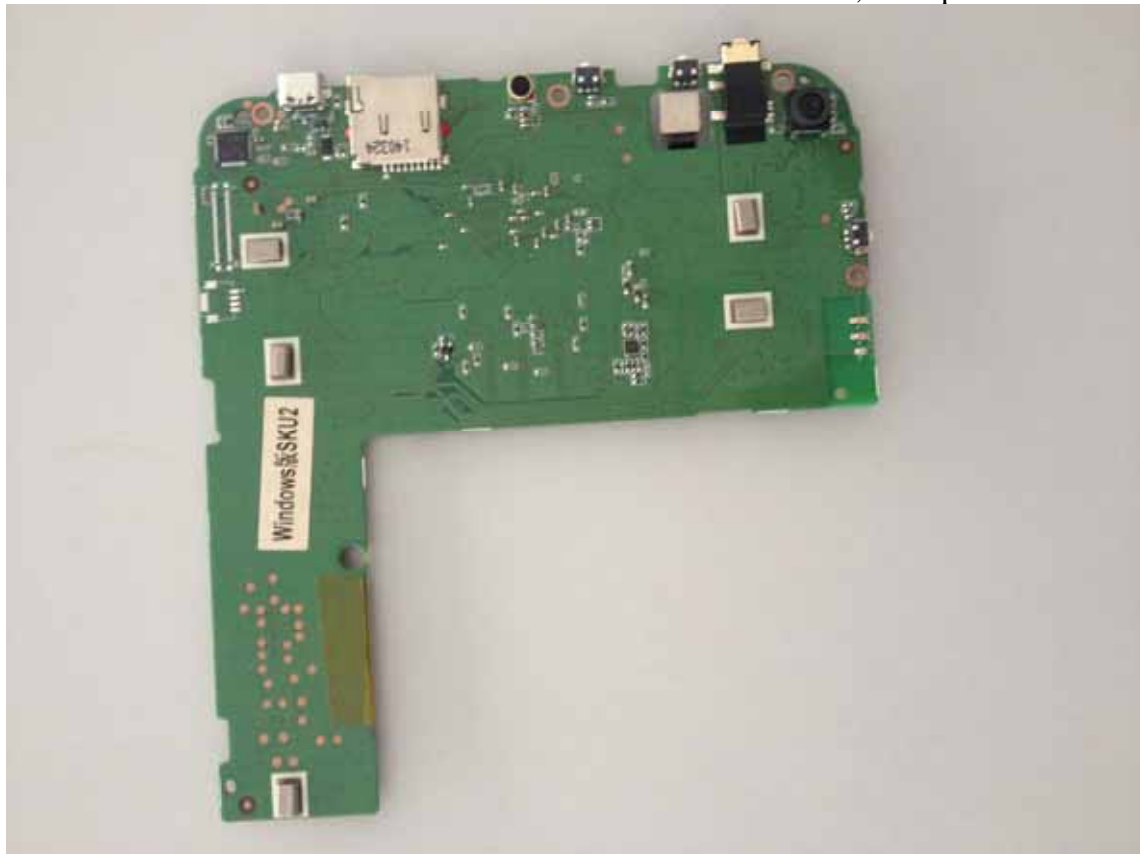


Figure 9

With Rear Camera, I/O Port of the PCB



Figure 10
Battery



Figure 11
Battery



Figure 12
Power Adapter



Figure 13
Power Adapter

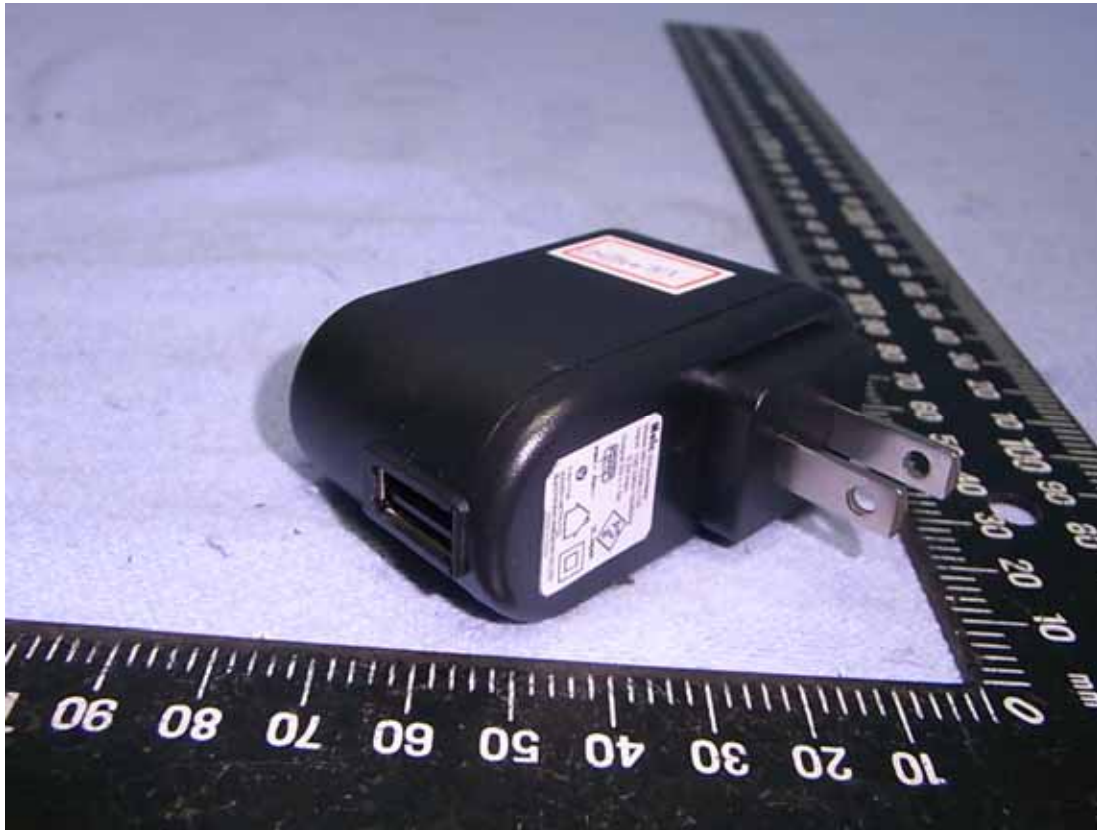


Figure 14
Power Adapter



Figure 15
USB Cable

