

Figure 3
General Appearance of the EUT



Figure 4
Inside of the EUT



Figure 5
Inside of the EUT



Figure 6
Inside of the EUT



Figure 7
Inside of the EUT



Figure 8
Frontside of Touch panel



Figure 9
Backside of the Touch panel



Figure 10
Frontside of the LCD Panel



Figure 11
Backside of the LCD Panel



Figure 12
Label of LCD Panel



Figure 13
Component side of the PCB

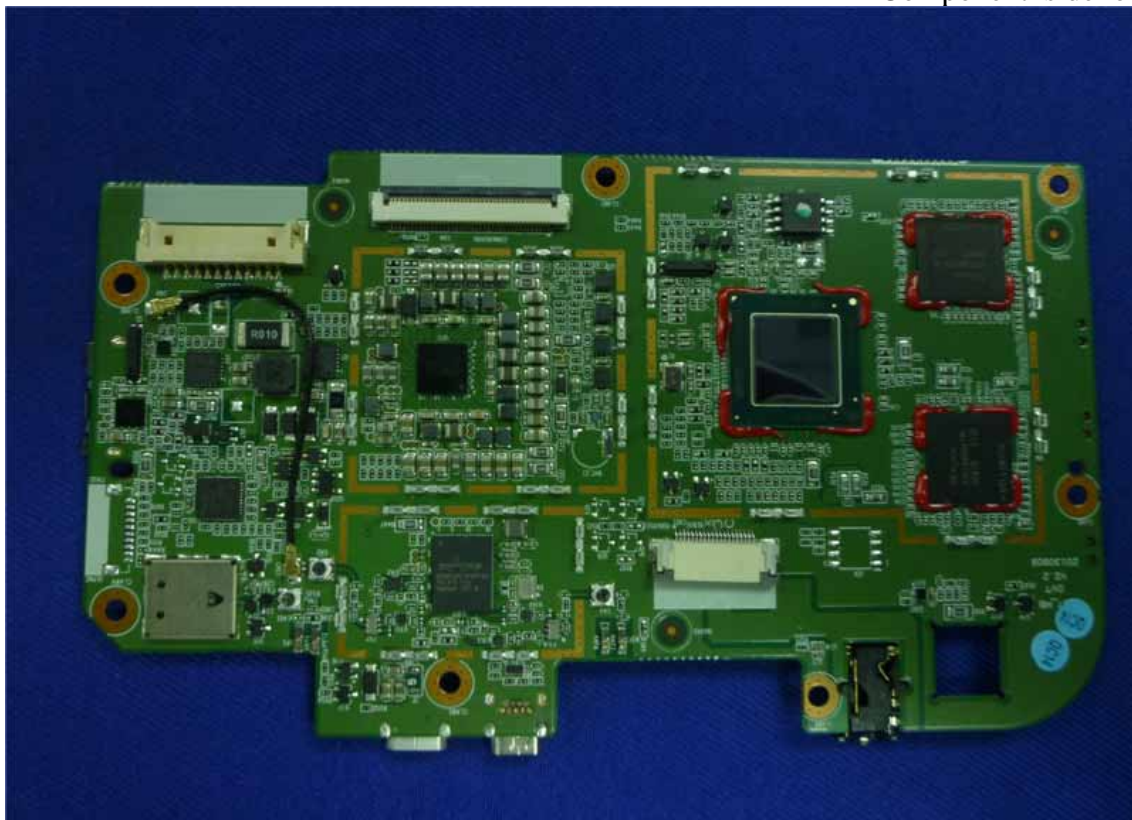


Figure 14
Component side of the PCB

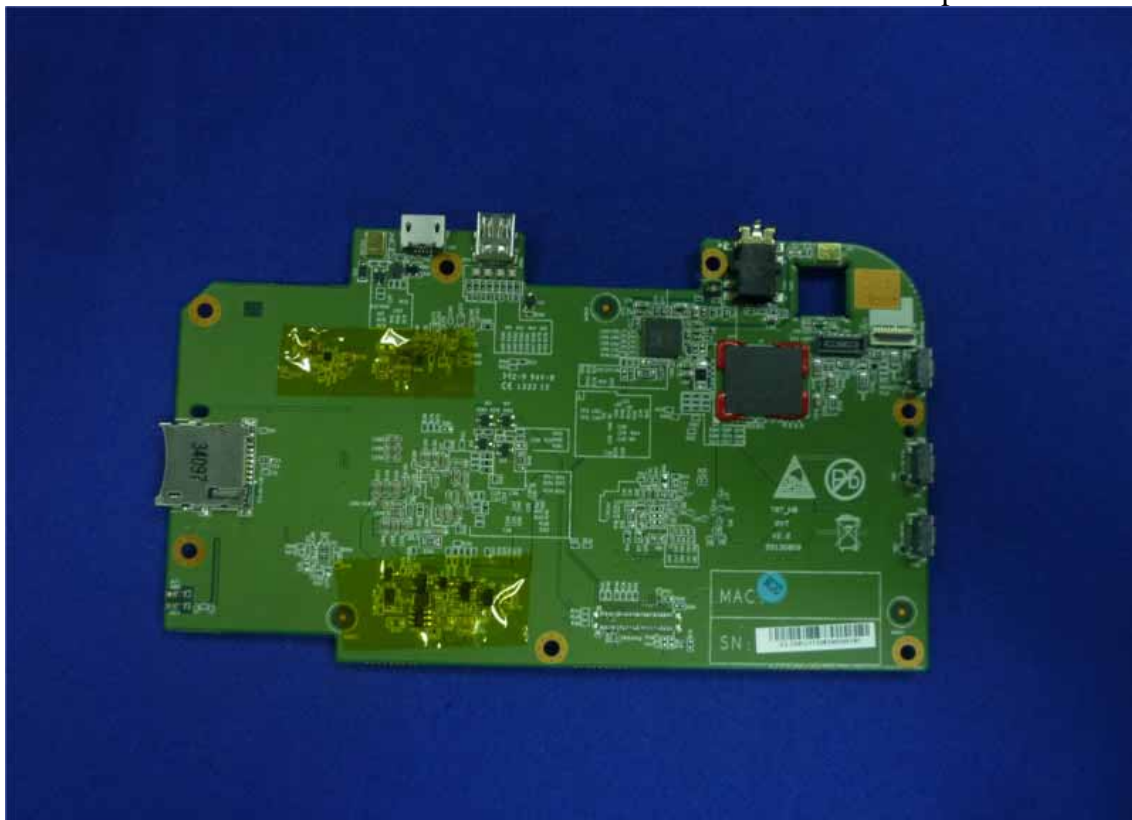


Figure 15
I/O Port of the PCB



Figure 16
I/O Port of the PCB

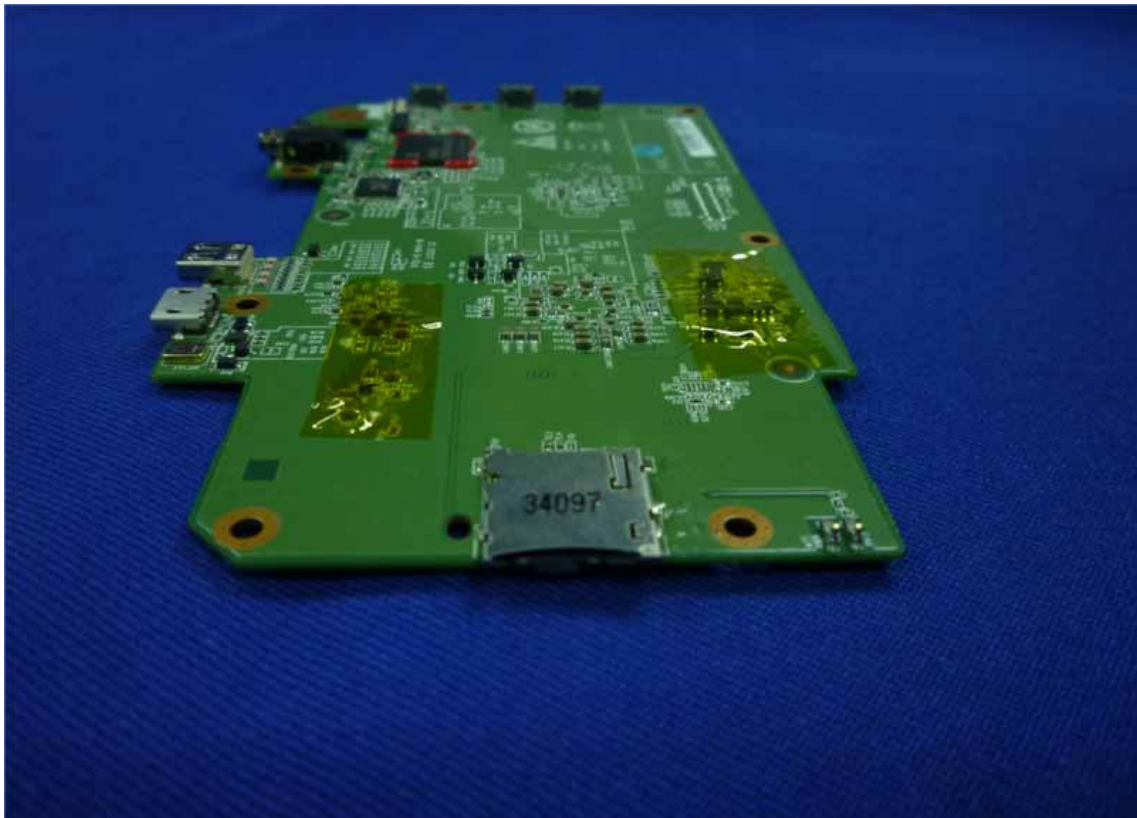


Figure 17
Camera Front of the EUT



Figure 18
Camera Rear of the EUT

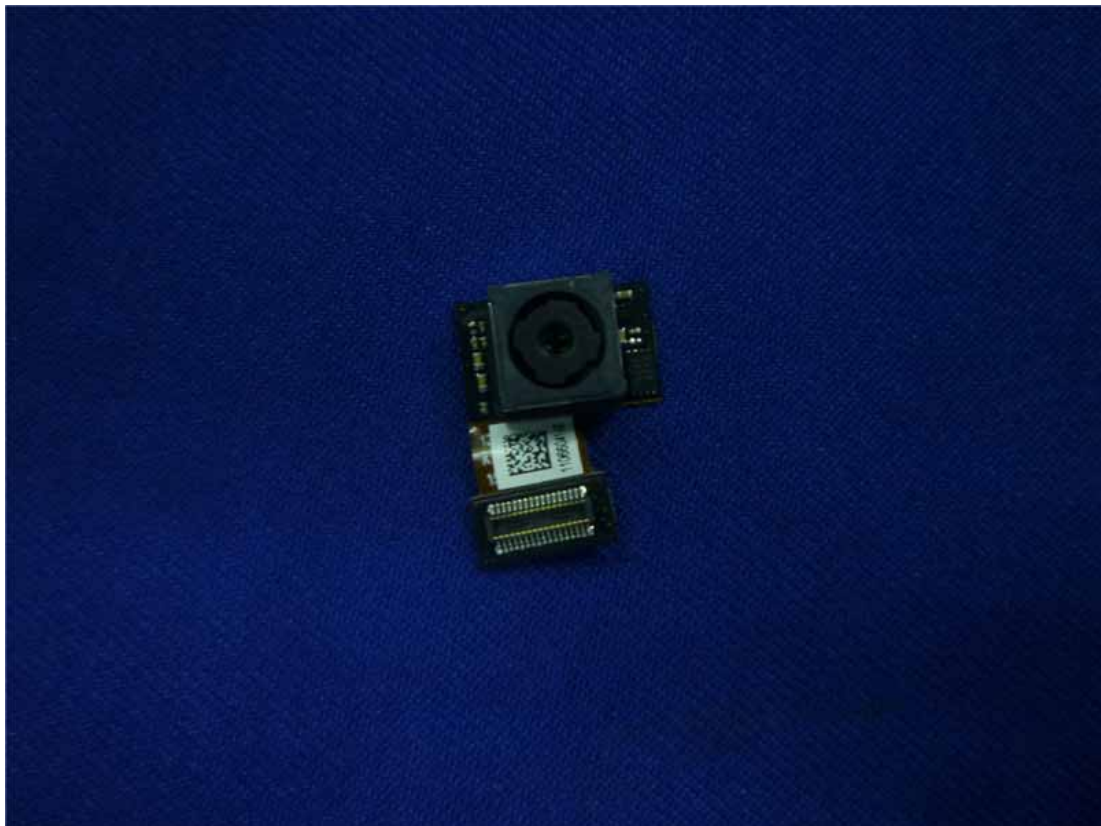


Figure 19
Battery of the EUT



Figure 20
Power Adapter



Figure 21
Power Adapter



Figure 22
USB Cable

