

Figure 7
With Rear Camera, Inside of the EUT



Figure 8
With Rear Camera, Component side of the PCB

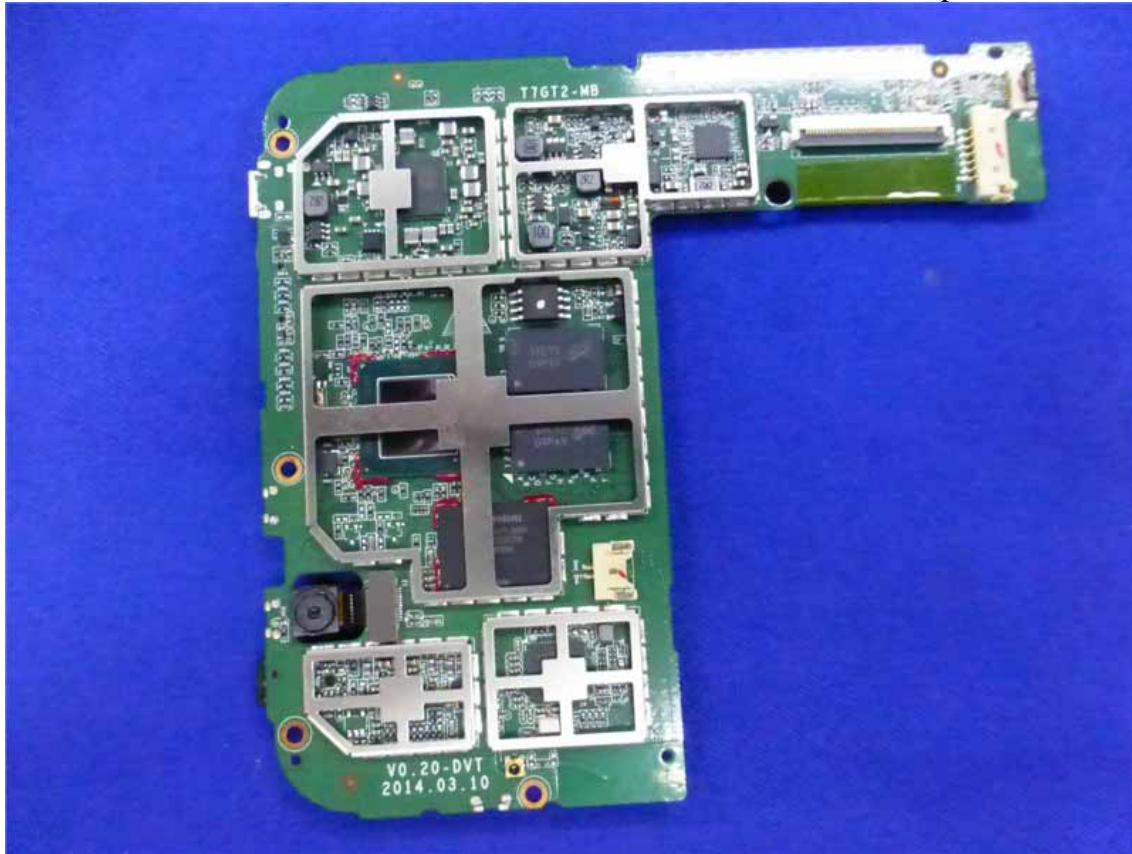


Figure 9
With Rear Camera, Component side of the PCB



Figure 10
With Rear Camera, I/O Port of the PCB



Figure 11
Without Rear Camera, General Appearance of the EUT



Figure 12
Without Rear Camera, General Appearance of the EUT



Figure 13

Without Rear Camera, General Appearance of the EUT



Figure 14

Without Rear Camera, General Appearance of the EUT



Figure 15
Without Rear Camera, Inside of the EUT



Figure 16
Without Rear Camera, Inside of the EUT



Figure 17
Without Rear Camera, Component side of the PCB



Figure 18
Without Rear Camera, Component side of the PCB

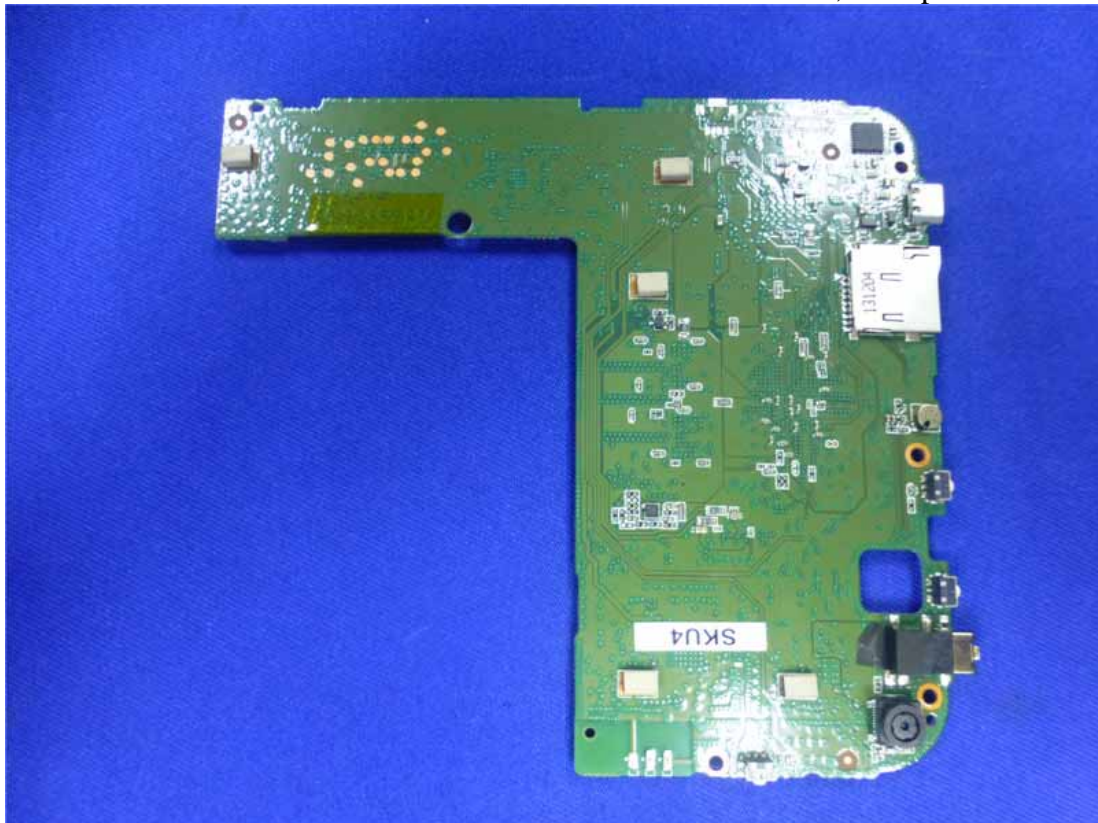


Figure 19

Without Rear Camera, I/O Port of the PCB



Figure 20

Frontside of the LCD Panel



Figure 21
Backside of the LCD Panel



Figure 22
Battery



Figure 23
Battery



Figure 24
Power Adapter



Figure 25
Power Adapter

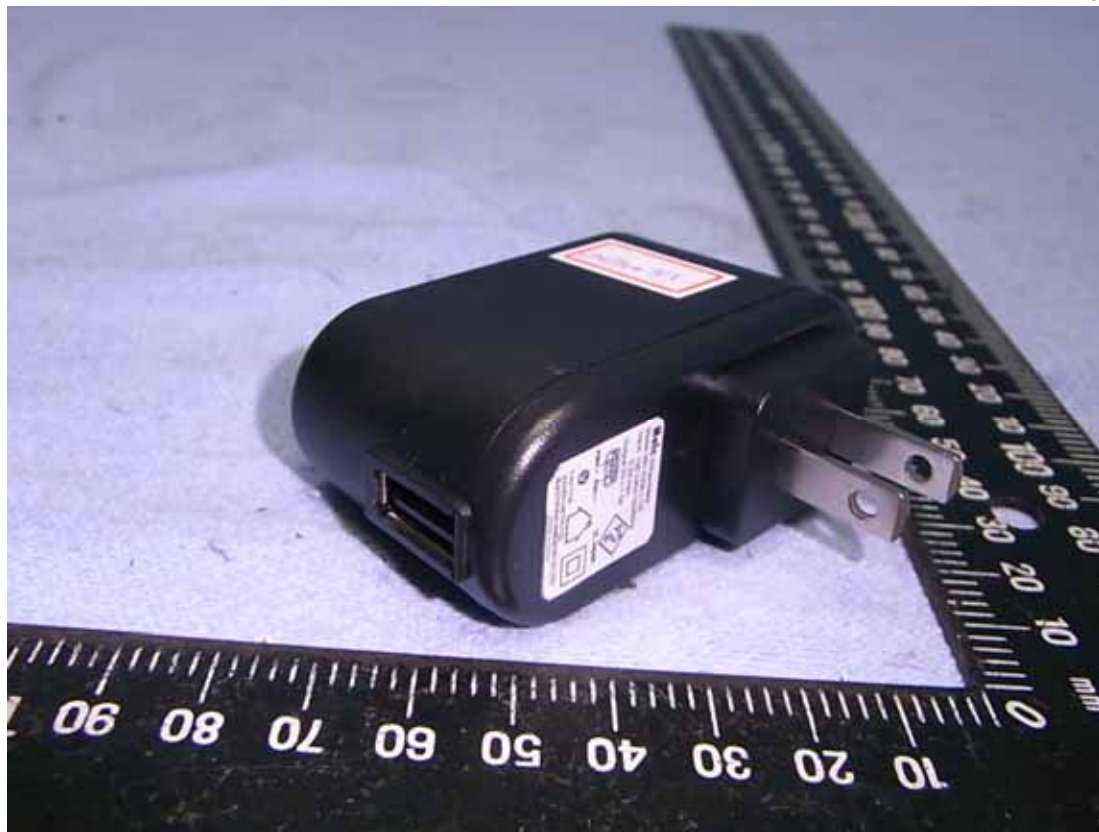


Figure 26
Power Adapter



Figure 27
USB Cable

