

**Figure 5**  
General Appearance of the EUT



**Figure 6**  
Inside of the EUT



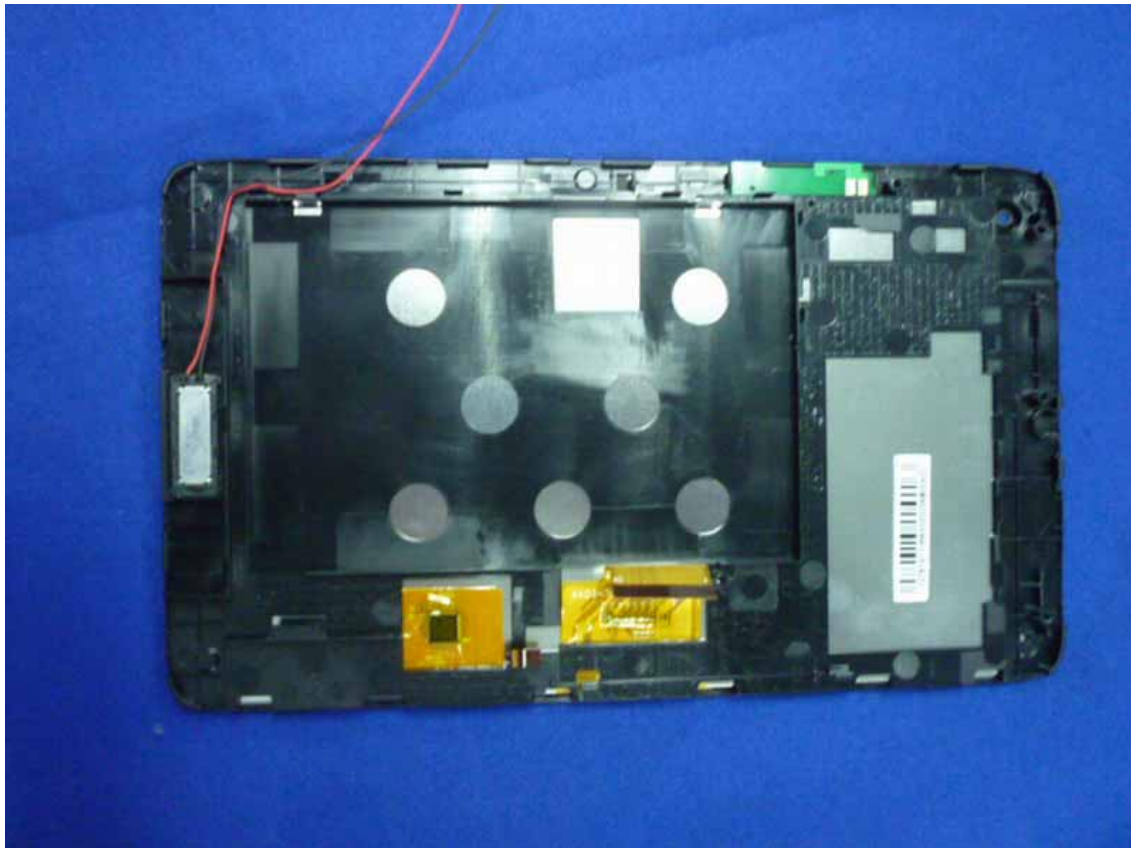
**Figure 7**  
Inside of the EUT



**Figure 8**  
Frontside of the LCD Panel



**Figure 9**  
Backside of the LCD Panel



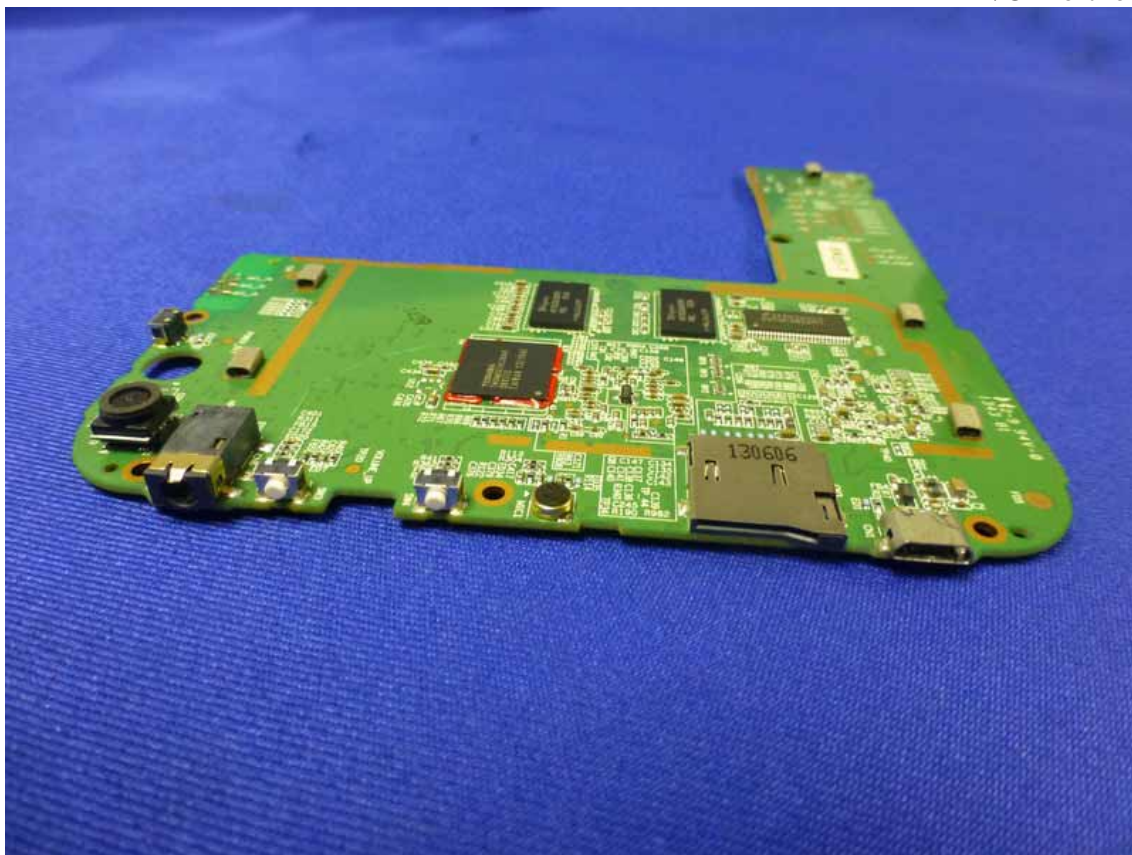
**Figure 10**  
Component side of the PCB



**Figure 11**  
Component side of the PCB



**Figure 12**  
I/O Port of the PCB



**Figure 13**  
Battery



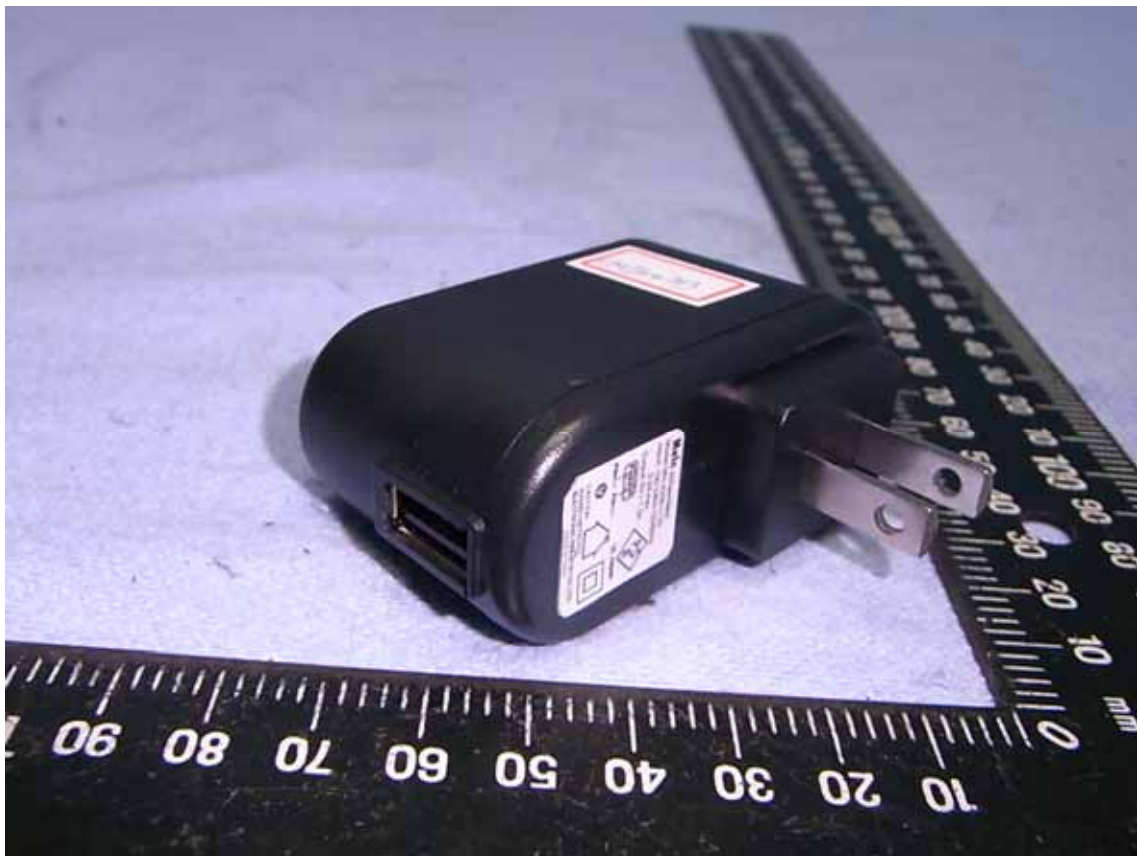
**Figure 14**  
Battery



**Figure 15**  
Power Adapter#1



**Figure 16**  
Power Adapter#1



**Figure 17**  
Power Adapter#1



**Figure 18**  
Power Adapter#2



**Figure 19**  
Power Adapter#2



**Figure 20**  
Power Adapter#2





**Figure 21**  
Power Adapter#2



**Figure 22**  
USB Cable

