

A decorative horizontal band of overlapping, semi-transparent, colorful shapes in shades of purple, red, orange, green, and blue, resembling a stylized wave or sound wave.

invoxia

User guide  
NVX340

## Declaration of Conformity for the European Union

Invoxia declares that the NVX340 product complies with the essential requirements and other relevant provisions of the European RTTE Directive 1999/5/EC on Radio and Telecommunication Terminal Equipment.

You can read the Declaration of Conformity at the following address: [www.invoxia.com/fr/support](http://www.invoxia.com/fr/support).



## U.S. Federal Communications Commission (FCC) Compliance Statement

The changes or modifications not expressly approved by the party responsible for compliance could void the user's authority to operate the equipment.

To comply with the FCC RF exposure compliance requirements, this device and its antenna must not be co-located or operating in conjunction with any other antenna or transmitter.

This device complies with part 15 of the FCC Rules. Operation is subject to the following two conditions: (1) This device may not cause harmful interference, and (2) this device must accept any interference received, including interference that may cause undesired operation. Changes or modifications not expressly approved by the party responsible for compliance could void the user's authority to operate the equipment.

Note: This equipment has been tested and found to comply with the limits for a Class B digital device, pursuant to part 15 of the FCC Rules. These limits are designed to provide reasonable protection against harmful interference in a residential installation. This equipment generates, uses and can radiate radio frequency energy and, if not installed and used in accordance with the instructions, may cause harmful interference to radio communications. However, there is no guarantee that interference will not occur in a particular installation. If this equipment does cause harmful interference to radio or television reception, which can be determined by turning the equipment off and on, the user is encouraged to try to correct the interference by one or more of the following measures:

- Reorient or relocate the receiving antenna.
- Increase the separation between the equipment and receiver.
- Connect the equipment into an outlet on a circuit different from that to which the receiver is connected.
- Consult the dealer or an experienced radio/TV technician for help.

## Environment



Your NVX340 dock has been designed and manufactured using quality materials and components which can be reused and recycled. The presence of the crossed-out wheeled bin symbol indicates that the product complies with EU Directive 2002/96/EC. It must be disposed of through an appropriate collection and recycling structure.

Please contact your local electrical and electronic equipment waste management scheme.

Please respect your local municipal regulations and do not dispose of these products with unsorted household waste.

The correct disposal of products at the end of their working life is good for the environment and your health.

## Legal

invoxia®, NVX340®,™ Experience your phone, In Vivo Acoustic®, Smart holder® and related trademarks, names and logos are the property of invoxia.

iPad, iPhone, iPod touch are trademarks of Apple Inc., registered in the U.S. and other countries.

Bluetooth® is a trademark of Bluetooth SIG. Skype™ is a trademark of Skype Technologies S.A.

Skype, associated trade marks and logos and the «S» logo are trade marks of Skype Limited.

Samsung and Galaxy S are trademarks of Samsung Electronics Co., Ltd.

Android is a trademark of Google Inc.

## Table of contents

• Important information	5
• Safety guidelines	5
<b>1 Discover your NVX340 dock</b>	<b>6</b>
• Box content	6
• Your NVX340 dock	6
<b>2 Set-up</b>	<b>7</b>
• Connect all your devices	9
• Downloading the innoxia application	10
<b>3 Bluetooth</b>	<b>10</b>
• Bluetooth 1st connection	10
• Multiple connection: Pairing a new device / Reconnect a device	10
• Disconnect a paired device	10
• Unpair all connected devices	10
<b>4 Use</b>	<b>11</b>
• Placing a mobile call	11
• Receiving a mobile call	11
• Ending a mobile call	11
• Receiving and ending a voip app call	11
• Adjusting the volume	11
• Activating and desactivating the speakers	11
• Listening to music	12
• Updating your NVX340	12
• Innoxia app settings	12
<b>4 Technical Data</b>	<b>13</b>
• Mfi program	13
• Connectivity	13
• Technical Specifications	13
• Buttons	13

<b>5</b>	<b>Warranty</b>	<b>14</b>
•	Warranty period	14
•	Warranty coverage	14
•	Exclusion	14
•	Procedure	14
•	Contact	14
•	Invoxia	14

# Important information

## Safety Guidelines

### Required Power Supply

This dock is powered through a mains AC 100-240V supply.

### Warning

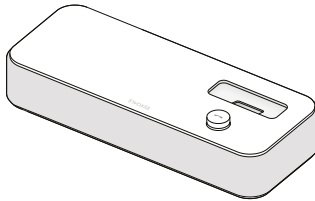
- Do not open the base or charger.
- Please ensure that no liquid comes into contact with the product. Do not expose the device to excessive smoke, dust, mechanical vibration or shock.
- Only use the cables, adapters and batteries supplied.
- Place the unit near an accessible electrical outlet.
- Do not expose the device to excessive heat, e.g. to direct sunlight or near heating equipment.
- Do not use in areas where there are risks of explosion.

### Operating and storage temperature

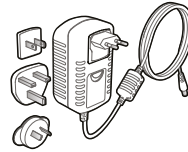
Use the device in a room where the temperature is always between 0 and 40°C (32 to 104°F).

# 1 | Discover your NVX340 dock

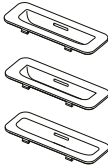
## Box content



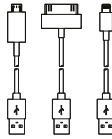
NVX340 base



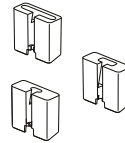
AC adapter



Lightning, 30 pin and micro-USB adapters

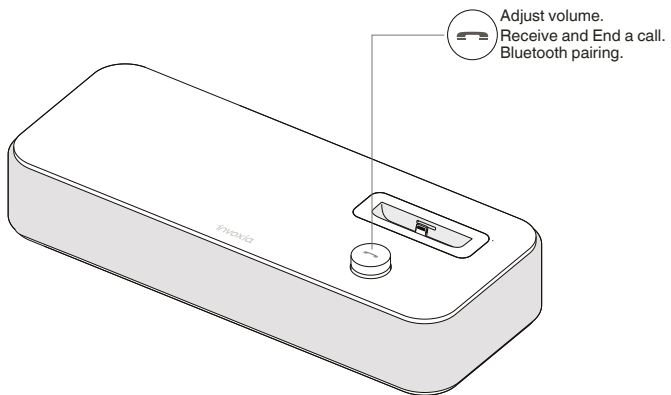


Lightning, 30 pin and micro-USB cables



Lightning, 30 pin and micro-USB cable adapters

## Your NVX340 dock



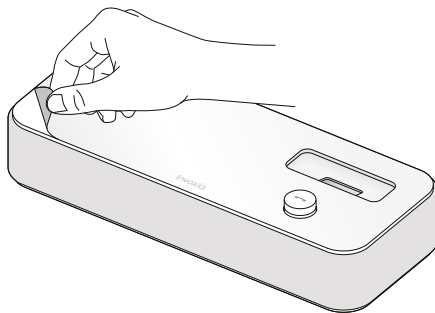
Designed and produced by invoxia, Paris

## 2 | Set up

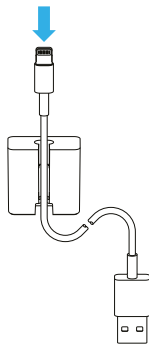
Place your phone near your mains supply socket.

Once installed, to benefit from the best sound quality avoid placing any obstacles (walls or cumbersome objects) within a range of 20cm.

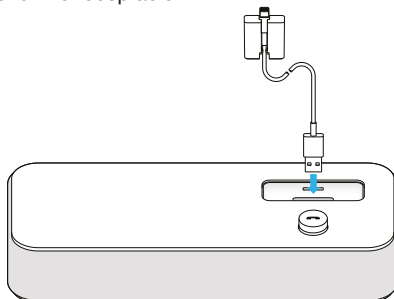
1. The NVX340 base is protected by a transparent film. Please remove it.



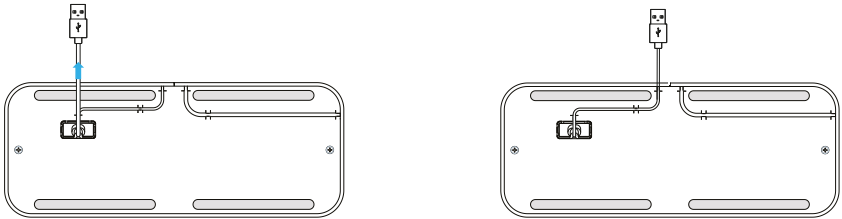
2. Insert the cable suitable to your smartphone into the matching cable adapter.



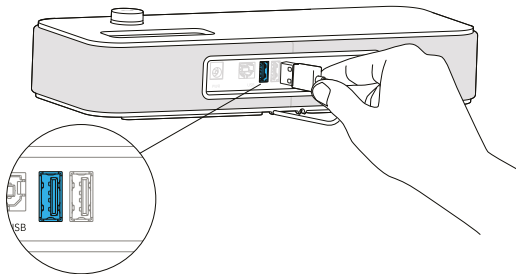
3. Place it then in the special pocket of the receptacle.



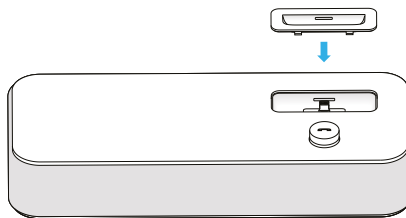
4. Slide the cord into place through the interstices under the base.



5. Plug the USB connector to the left USB port at the rear of the device.

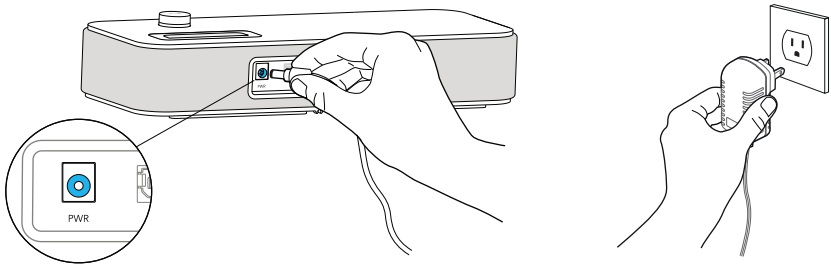


6. Insert the suitable adapter to your smartphone, or none if you use a case and your device doesn't fit. To connect a different model, please repeat steps 2 to 6.

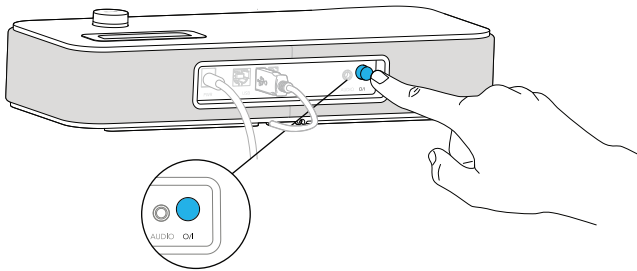




8. Plug the mains power adapter into the back of the base and into a wall mount socket.

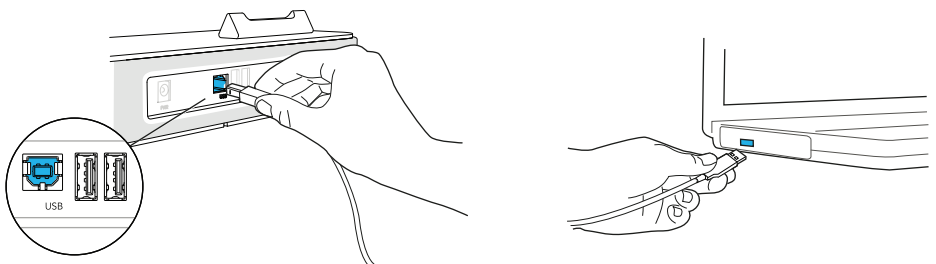


9. Press the On / Off button at the back of the base.



### Connect all your devices

The 3.5 mm jack is an audio input for all your devices with an audio output. The USB and USB slave port are to connect your computer, smartphones and tablets. (USB cables not included).



## Downloading the invoxia application



1. Go to the App Store or Google Play Store on your smartphone or tablet and download the invoxia app (Free).
2. Start the application.

## 3 Bluetooth

### Bluetooth 1st connection

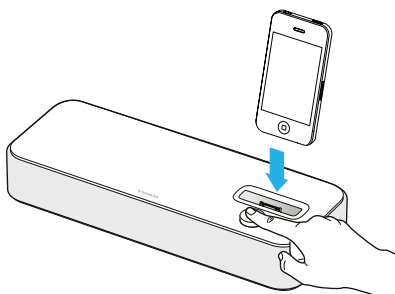
With iOS 6, be sure your Bluetooth is activated first.

- Dock or connect via USB your iPhone/iPod/iPad. The Bluetooth connection is then automatic!
- For any devices, long push the volume button until you hear a sound signal. A “Pairing mode: NVX is waiting for connection” message allows you to pair your NVX340 in your device Bluetooth menu. A final sound confirms the pairing.

### Multiple connections: Pairing a new device / Reconnect a device

With iOS 6, be sure your Bluetooth is activated first.

- For any devices, long push the volume button until you hear a sound signal. A «Pairing mode: NVX is waiting for connection» message allows you to pair your NVX340 in your device Bluetooth menu. A final sound confirms the pairing.
- Connecting a previously paired device is easy from its Bluetooth menu. The last connected device is the controlling device.



### Disconnect a paired device

- Long push the volume button until hearing a double-sound signal. The last connected device is then disconnected and auto-connection is stopped. A «Disconnecting» message and sound signal confirms the disconnection.
- In your invoxia app, go to Settings > Bluetooth , you can tap «Unpair».

### Unpair all the connected devices

- Long push the volume button until hearing a three-sound signal. A “Clearing all subscriptions” message confirms it.
- ⚠ Also forget the NVX340 from your device Bluetooth menu in order to complete future pairings between these devices.

## 4 Use

You can now receive and place calls through your mobile line or any Voice over IP app. You can also benefit from your conferences and all your music with a great acoustic sound quality.

### Placing a mobile call on the NVX340

First, dial from your mobile, or select your contact on your Contact list. Choose the audio output and select NVX340.

You may also push the NVX340 volume button to have the sound on the device.

### Receiving a mobile call

There are several ways to receive a mobile call:

1. By tapping the *Answer* button on your smartphone.
2. From the base, press the volume button. The incoming call is then received in speaker mode.

### Ending a mobile call

There are several ways to end a mobile call:

1. By pressing the *End* button on your smartphone.
2. In speaker mode, by pressing the volume button.

### Receiving and ending a voip app call

To receive and end a voip call use your smartphone or tablet.

NB: The volume button can't be used as a pick-up / hang-up direct solution in this configuration.

### Adjusting the volume

Turn the volume button to regulate the volume coming from the speakers.

### Activating and deactivating the speakers

To accept a call in speaker mode or to switch to speaker mode during a call, press the volume button on the base.

## Listening to music

Listening to your music from your smartphone and tablet is easy with a Bluetooth connexion.

Apple users, you may also control your Music App by using the volume button:

- One tap on the volume button for Play / Pause
- A quick double tap on the volume button plays next song
- A quick triple tap on the volume button goes to previous song.

## Updating your NVX340

To always benefit from the last features and acoustics improvements made to the NVX340, we regularly updates the device firmware.



To upgrade it, please download the invoxia app (Free on the App Store or Google Play Store).

Dock or USB connect your smartphone / tablet to the NVX340.



When a new firmware update is available, the invoxia app will display a “New version available” message on the invoxia app home screen. You may also go to Settings > General > “Update Firmware”.

The update may take a few minutes, at the end of the process, the devices reboots and is ready for use.

N.B: Please provide your e-mail address in the app to be kept informed on the lasts invoxia firmware releases.

## invoxia app Settings

The invoxia app also lets you manage some features:

1. Go to *Home* > *Settings*  for an Apple device or  for an Android.

- *Sound*: volume of ringtone, alerts startup sound, etc

You may choose your ringtone in *Sounds* > *Ringtones* and select the ringtone of your choice.

You may choose the USB slave audio mode: choose *Music* to have the best sound quality for music listening with stereo playback, choose *Voice* to be able to use the microphones capture and mono playback.

N.B.: When changing the mode, wait a few seconds before use.

- *Bluetooth*: to manage your Bluetooth settings, connections and your audio out settings.

Please note that you may turn the “Call handling” feature ON to always have the sound on your NVX340. By turning it OFF, a simple push on the NVX340 volume button pick-up will let you use have the sound on the NVX340.

This feature prevents you to receive your calls on the NVX340 when you’re still in a Bluetooth range of the device but not willing to have the sound on the NVX340.

- *General - Application*: details about your firmware and application - for updates and debug information.

## 5 Technical Data

### Mfi program

Made for iPod, Made for iPhone, Made for iPad

Compatible 4th and 3rd generation iPod Touch, iPhone 5, 4S, 4, 3GS, iPad mini, new iPad, iPad 2 and iPad

Connection through USB to Lightning / 30 pin / micro-USB cables or Bluetooth

Universal support for iPhone 5, iPhone 4S/4, 3GS et 3G and Samsung Galaxy SIII

### Connectivity

Bluetooth 2.1

1 USB slave port

2 USB port

1 jack 3.5 mm input

### Technical Specifications

Power supply: 100-240V / 12V 3A AC adapter

Dimensions: 29x11,5x5,25cm

Operating temperature: 0°C – 40°C

Weight: 2,5 kg

Humidity: 10% - 90%

### Buttons

On/ Off button

 Volume / Answer button / Bluetooth connexion

## 6 Warranty

This warranty relates to the NVX340 dock and not its accessories (power adapter).

### Warranty Period

This dock, when new, comes with a 12-month warranty. The Warranty Period starts on the date of purchase of the NVX340 dock.

The Warranty will be honored on presentation of the original bill or receipt, provided the date of purchase and the unit type are indicated.

### Warranty Coverage

In the event of malfunction or defect during the Warranty Period, the authorized After Sales Team will unilaterally decide whether or not to proceed with the repair or replacement of the dock in whole or in part.

Spare parts that may be used during repair may be parts which have been reworked.

The original purchase date determines the start date of the Warranty Period. The Warranty Period is not extended if we repair or exchange the phone through our After Sales Team.

### Exclusion

Damage or defects caused through misuse or mishandling of the dock and through the use of accessories other than those originally included with the dock or not recommended in this User Guide are not covered by this Warranty.

The warranty does not cover damage caused by external factors such as lightning, water or fire or any other damage caused during transportation.

No warranty can be claimed if the dock is repaired, altered or modified by the purchaser or any other repairer who is not officially approved and qualified.

### Procedure

Invoxia warranties that returns will be processed between 4 to 8 weeks. Be sure to return the full product in its original packaging and in perfect condition. Any returns not meeting these conditions will be refused.

All returns must be authorized in advance by invoxia, whose After Sales Team will issue you with a return reference. The return form must be printed out and attached to the returned product.

Invoxia reserves the right to determine in good faith if all these conditions are met. Upon receipt of the returned product, invoxia will send an e-mail to confirm its receipt.

### Contact

To contact the After Sales Team, please send an email to [support@invoxia.com](mailto:support@invoxia.com).

### Invoxia

87, rue du Gouverneur Général Eboué  
92130 Issy-les-Moulineaux  
France

