



invoxia

User guide
Audiooffice

Declaration of Conformity for the European Union

Invoxia declares that the Audiooffice product complies with the essential requirements and other relevant provisions of the European RTTE Directive 1999/5/EC on Radio and Telecommunication Terminal Equipment.

You can read the Declaration of Conformity at the following address: www.invoxia.com/fr/support.



U.S. Federal Communications Commission (FCC) Compliance Statement

The changes or modifications not expressly approved by the party responsible for compliance could void the user's authority to operate the equipment.

To comply with the FCC RF exposure compliance requirements, this device and its antenna must not be co-located or operating to conjunction with any other antenna or transmitter.

This device complies with part 15 of the FCC Rules. Operation is subject to the following two conditions: (1) This device may not cause harmful interference, and (2) this device must accept any interference received, including interference that may cause undesired operation.

Note: This equipment has been tested and found to comply with the limits for a Class B digital device, pursuant to part 15 of the FCC Rules. These limits are designed to provide reasonable protection against harmful interference in a residential installation. This equipment generates, uses and can radiate radio frequency energy and, if not installed and used in accordance with the instructions, may cause harmful interference to radio communications. However, there is no guarantee that interference will not occur in a particular installation. If this equipment does cause harmful interference to radio or television reception, which can be determined by turning the equipment off and on, the user is encouraged to try to correct the interference by one or more of the following measures:

- Reorient or relocate the receiving antenna.
- Increase the separation between the equipment and receiver.
- Connect the equipment into an outlet on a circuit different from that to which the receiver is connected.
- Consult the dealer or an experienced radio/TV technician for help.

Environment



Your Audiooffice telephone has been designed and manufactured using quality materials and components which can be reused and recycled. The presence of the crossed-out wheeled bin symbol indicates that the product complies with EU Directive 2002/96/EC. It must be disposed of through an appropriate collection and recycling structure.

Please contact your local electrical and electronic equipment waste management scheme.

Please respect your local municipal regulations and do not dispose of these products with unsorted household waste.

The correct disposal of products at the end of their working life is good for the environment and your health.

Legal

invoxia ®,™ Experience your phone, In Vivo Acoustic ®, Smart holder® and related trademarks, names and logos are the property of invoxia. iPad, iPhone, iPod touch are trademarks of Apple Inc., registered in the U.S. and other countries. Bluetooth ® is a trademark of Bluetooth SIG. Skype™ is a trademark of Skype Technologies S.A. Skype, associated trade marks and logos and the «S» logo are trade marks of Skype Limited.

Table of contents

•	Important information	4
1	Discover your Audiooffice dock	6
•	Box content	5
•	Your Audiooffice dock	5
2	Set-up	6
•	Installing the handset	8
•	Connect all your devices	9
•	Bluetooth	9
3	Use	11
•	Ending a mobile call	11
•	Receiving a mobile call	11
•	Receiving and ending a voip app call	11
•	Adjusting the volume	11
•	Activating and desactivating the speakers	11
4	Technical Data	12
•	Mfi program	12
•	Connectivity	12
•	Technical Specifications	12
•	Buttons	12
5	Warranty	13
•	Warranty period	13
•	Warranty coverage	13
•	Exclusion	13
•	Procedure	13
•	Contact	13
•	Invoxia	13

Important information

Safety Guidelines

Required Power Supply

This dock is powered through a mains AC 100-240V supply.

Warning

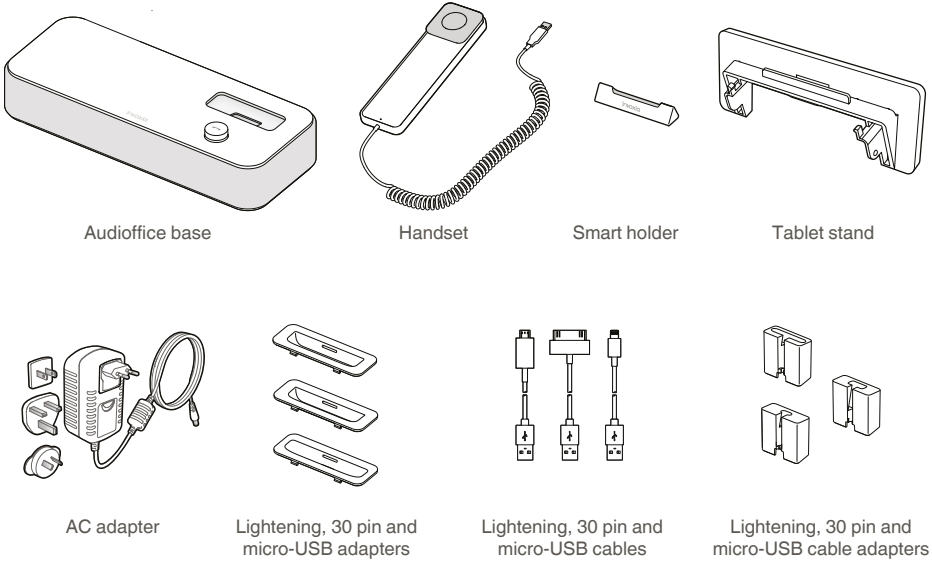
- Do not open the base, handset or charger.
- Please ensure that no liquid comes into contact with the product. Do not expose the device to excessive smoke, dust, mechanical vibration or shock.
- Only use the cables, adapters and batteries supplied.
- Place the unit near an accessible electrical outlet.
- Remove the handset from your ear when speaker mode is activated.
- Do not expose the device to excessive heat, e.g. to direct sunlight or near heating equipment.
- Do not use in areas where there are risks of explosion.

Operating and storage temperature

Use the device in a room where the temperature is always between 0 and 40°C (32 to 104°F).

1 | Discover your Audiooffice dock

Box content



Audiooffice base

Handset

Smart holder

Tablet stand

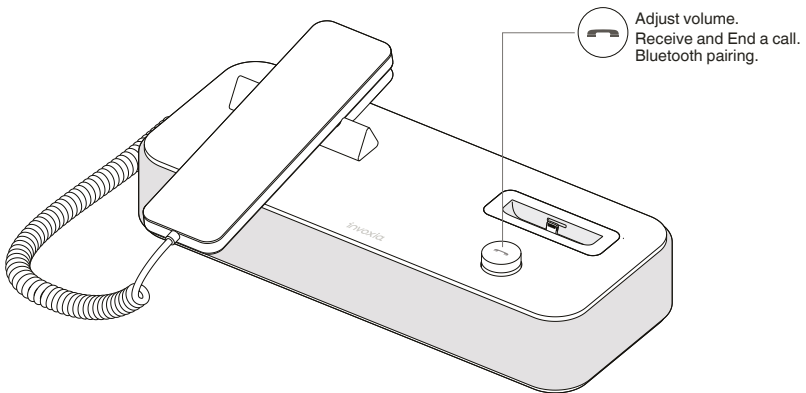
AC adapter

Lightning, 30 pin and micro-USB adapters

Lightning, 30 pin and micro-USB cables

Lightning, 30 pin and micro-USB cable adapters

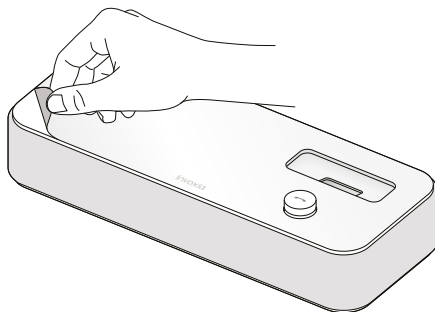
Your Audiooffice dock



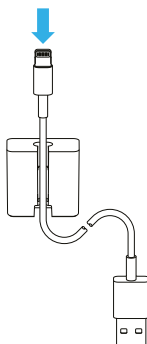
Designed and produced by invoxia, Paris

2 | Set up

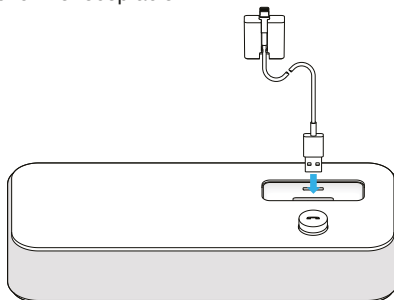
1. The Audiooffice base is protected by a transparent film. Please remove it.



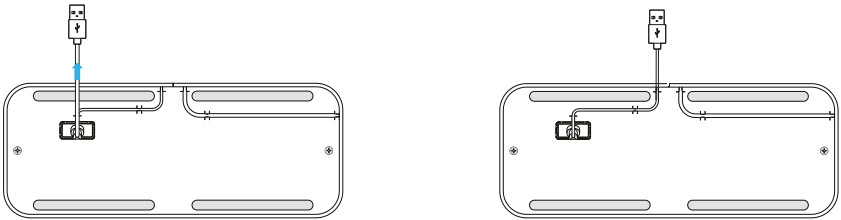
2. Insert the cable suitable to your smartphone into the matching cable adapter.



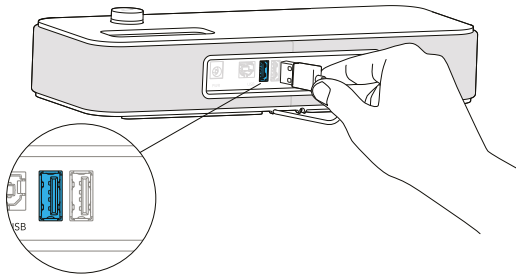
3. Place it then in the special pocket of the receptacle.



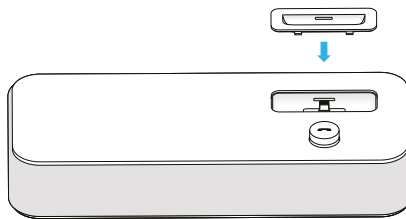
4. Slide the cord into place through the interstices under the base.



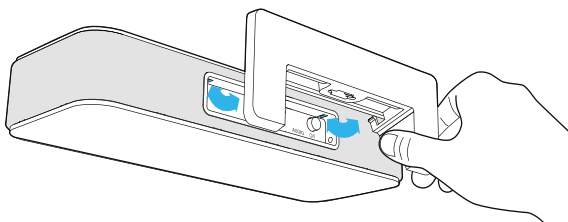
5. Plug the USB connector to the left USB port at the rear of the device.



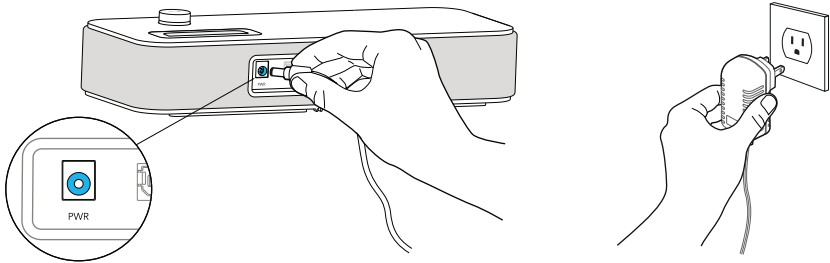
6. Insert the suitable adapter to your smartphone, or none if you use a case and your device doesn't fit. To connect a different model, please repeat steps 2 to 6.



7. Install the tablet holder if needed.

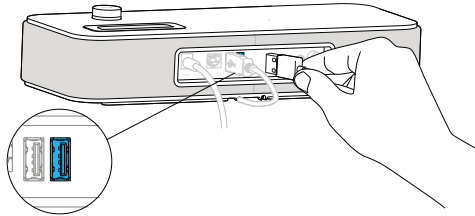


8. Plug the mains power adapter into the back of the base and into a wall mount socket.

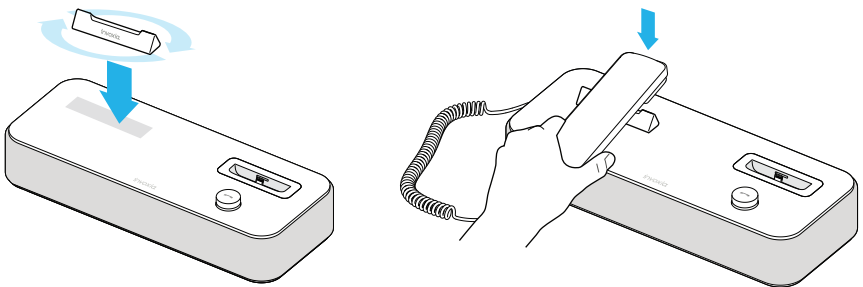


Installing the handset

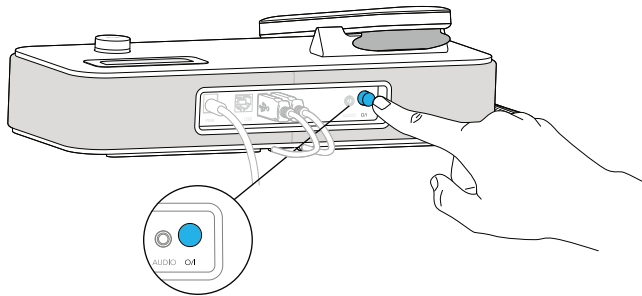
1. Plug the cord of the handset into the right USB port at the back of the base. Slide the cord into place through the interstices under the base.



2. Place the Smart Holder and the handset on the top of the base.

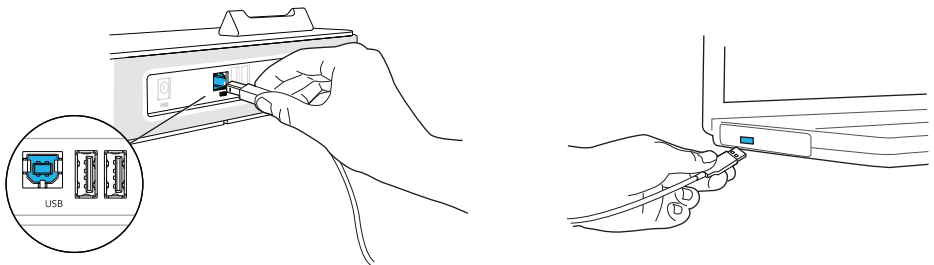


3. Press the On / Off button at the back of the base.



Connect all your devices

The 3.5 mm jack is an audio input for all your devices with an audio output.
The USB slave port is to connect your computer (USB cable not included).



Bluetooth

Bluetooth 1st connection

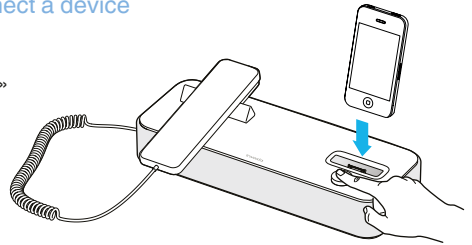
With iOS 6, be sure your Bluetooth is activated first.

- Dock or connect via USB your iPhone/iPod/iPad. The Bluetooth connection is then automatic!
- For any devices, long push the volume button until you hear a sound signal. A «Pairing mode: Audiooffice is waiting for connection» message allows you to pair your Audiooffice in your device Bluetooth menu. A final sound confirms the pairing.

Multiple connections: Pairing a new device / Reconnect a device

With iOS 6, be sure your Bluetooth is activated first.

- For any devices, long push the volume button until you hear a sound signal. A «Pairing mode: Audiooffice is waiting for connection» message allows you to pair your Audiooffice in your device Bluetooth menu. A final sound confirms the pairing.
- Connecting a previously paired device is easy from its Bluetooth menu. The last connected device is the controlling device.



Disconnect a paired device

- Long push the volume button until hearing a double-sound signal. The last connected device is then disconnected and auto-connection is stopped. A «Disconnecting» message and sound signal confirms the disconnection.
- In your invoxia app, go to Settings > Bluetooth , you can tap «Unpair».

Unpair all the connected devices

- Long push the volume button until hearing a three-sound signal. A «Clearing all subscriptions» message confirms it.
- ⚠ Also forget the Audiooffice from your device Bluetooth menu in order to complete future pairings between these devices.

3 Use

You can now receive and place calls through your mobile line or any Voice over IP app. You can also benefit from your conferences and all your music with a great acoustic sound quality.

Ending a mobile call

There are several ways to end a mobile call:

1. By pressing the *End* button on your iPhone.
2. By replacing the handset on the base.
3. In speaker mode, by pressing the volume button.

Receiving a mobile call

There are several ways to receive a mobile call:

1. By tapping the *Answer* button on your iPhone.
2. From the base, press the volume button. The incoming call is then received in speaker mode.
3. Pick-up the handset from its base.

Receiving and ending a voip app call

To receive and end a voip call use your smartphone or tablet.

NB: The volume button can't be used as a pick-up / hang-up button in this configuration.

Adjusting the volume

Turn the volume button to regulate the volume coming from the speakers or the handset.

Activating and deactivating the speakers

To accept a call in speaker mode or to switch to speaker mode during a call, press the volume button on the base.

To deactivate the speakers, pick-up the handset.

4 Technical Data

Mfi program

Made for iPod, Made for iPhone, Made for iPad

Compatible 4th and 3rd generation iPod Touch, iPhone 5, 4S, 4, 3GS, new iPad, iPad 2 and iPad

Connection through 30 pin connector or Bluetooth

Universal support for 4th and 3rd generation iPod Touch, iPhone 4S/4, 3GS et 3G

Connectivity

Bluetooth 2.1

1 USB slave port

1 USB port

1 jack 3.5 mm input

Technical Specifications

Power supply: 100-240V / 12V 3A AC adapter

Dimensions: 31x11,5x7cm (dock), 17,8x5,1x3,2cm (handset)

Operating temperature: 0°C – 40°C

Weight: 1.3 kg

Humidity: 10% - 90%

Buttons

On/ Off button



Volume / Answer button / Bluetooth connection

5 Warranty

This warranty relates to the AudiOffice dock and not its accessories (power adapter, handset cable).

Warranty Period

This dock, when new, comes with a 12-month warranty. The Warranty Period starts on the date of purchase of the AudiOffice dock.

The Warranty will be honored on presentation of the original bill or receipt, provided the date of purchase and the unit type are indicated.

Warranty Coverage

In the event of malfunction or defect during the Warranty Period, the authorized After Sales Team will unilaterally decide whether or not to proceed with the repair or replacement of the dock in whole or in part.

Spare parts that may be used during repair may be parts which have been reworked.

The original purchase date determines the start date of the Warranty Period. The Warranty Period is not extended if we repair or exchange the phone through our After Sales Team.

Exclusion

Damage or defects caused through misuse or mishandling of the dock and through the use of accessories other than those originally included with the dock or not recommended in this User Guide are not covered by this Warranty.

The warranty does not cover damage caused by external factors such as lightning, water or fire or any other damage caused during transportation.

No warranty can be claimed if the dock is repaired, altered or modified by the purchaser or any other repairer who is not officially approved and qualified.

Procedure

Invoxia warranties that returns will be processed between 4 to 8 weeks. Be sure to return the full product in its original packaging and in perfect condition. Any returns not meeting these conditions will be refused.

All returns must be authorized in advance by invoxia, whose After Sales Team will issue you with a return reference. The return form must be printed out and attached to the returned product.

Invoxia reserves the right to determine in good faith if all these conditions are met. Upon receipt of the returned product, invoxia will send an e-mail to confirm its receipt.

Contact

To contact the After Sales Team, please send an email to support@invoxia.com.

Invoxia

87, rue du Gouverneur Général Eboué
92130 Issy-les-Moulineaux
France

