

An aerial photograph of a large industrial park under a clear blue sky. The park features several large, modern industrial buildings with grey facades and blue-tinted glass windows. The roofs of these buildings are covered with a dense array of solar panels. In the foreground, there are parking lots filled with cars and a few small service buildings. The background shows a cityscape with various residential and commercial buildings, including several tall apartment complexes. The overall scene depicts a large-scale, modern manufacturing facility.

通力電子控股有限公司



SV210项目天线测试报告

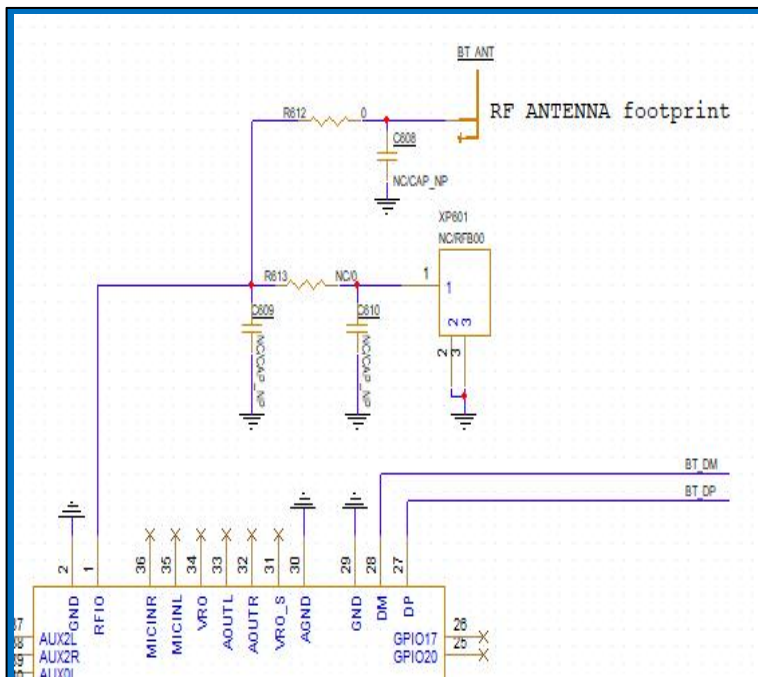


Project information—项目信息

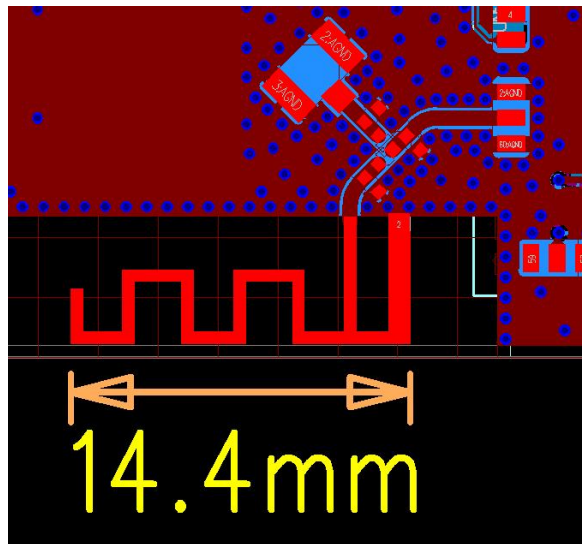
项目名称:	VIZIO	项目类型:	蓝牙音响
结构图纸版本:			
测试工程师:	吴庆光	测试时间:	2024.06.14
软件信息:		天线个数:	1
天线形式:	PIFA	天线材质:	PCBA板载
测试结论:	性能符合此类产品指标，满足客户要求。		



天线匹配电路



天线尺寸

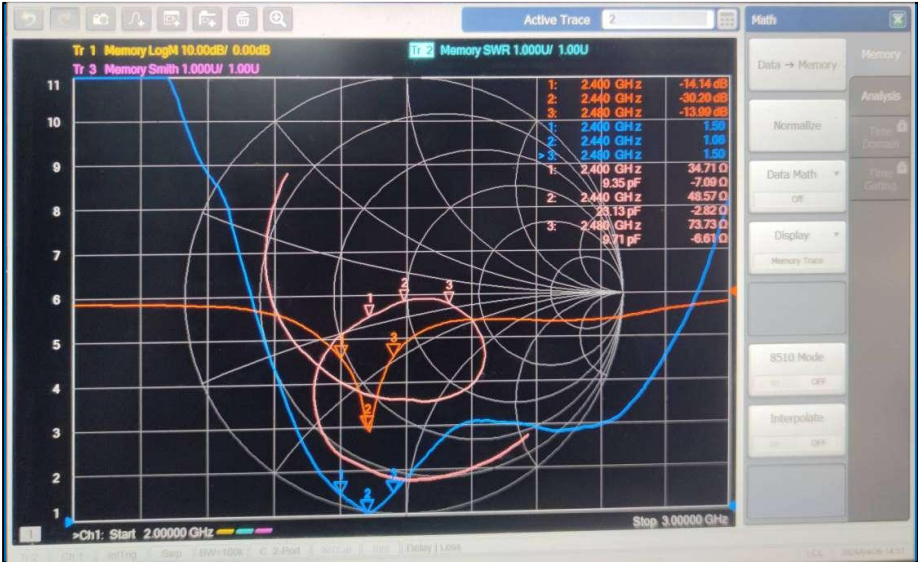


天线S11测试

天线测试点位



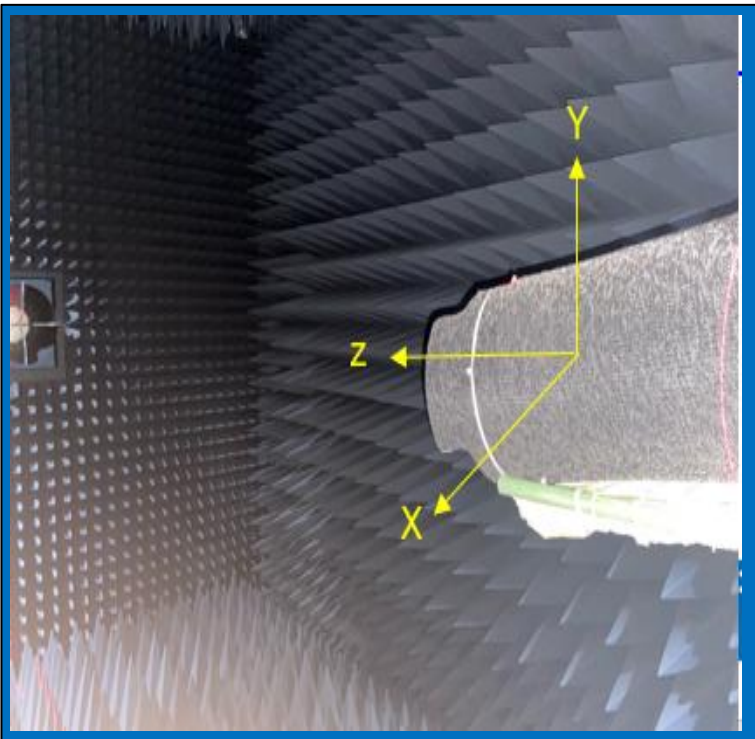
天线S11测试数据



测试项	LOW	MID	HIG	LIMIT
驻波比	1.5	1.06	1.5	2
回损	-14.14	-30.2	-13.99	-10



测试环境照



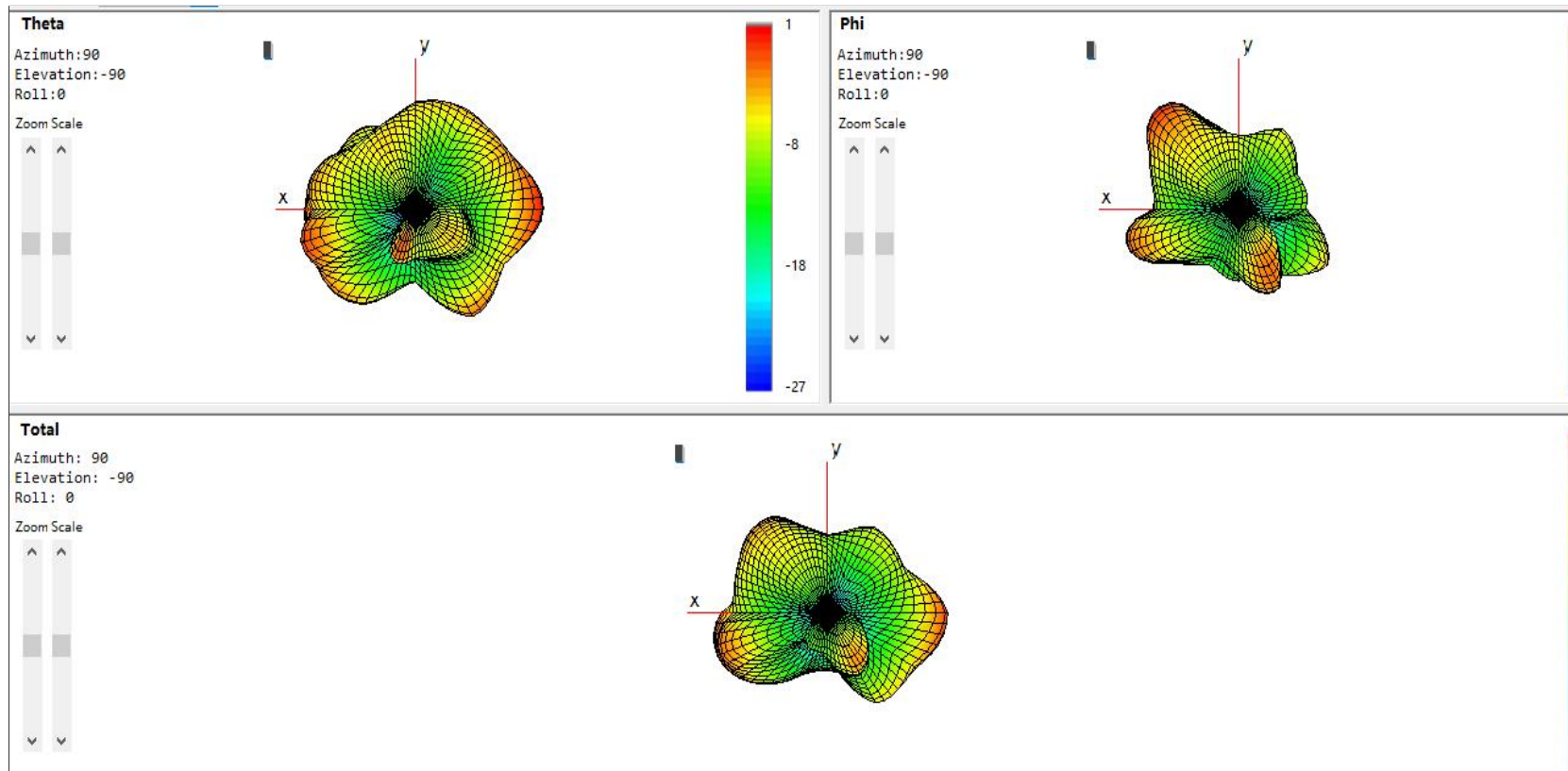
天线效率测试数据

Freq(MHz)	Gain(dB)	Efficiency(dB)	Efficiency(%)
2400.00	1.88	-2.76	52.97
2410.00	1.71	-2.78	52.78
2420.00	1.82	-2.69	53.83
2430.00	1.99	-2.64	54.46
2440.00	2.16	-2.58	55.15
2450.00	2.35	-2.57	55.38
2460.00	2.71	-2.49	56.33
2470.00	2.86	-2.61	54.81
2480.00	3.00	-2.71	53.54

天线增益：3dBi

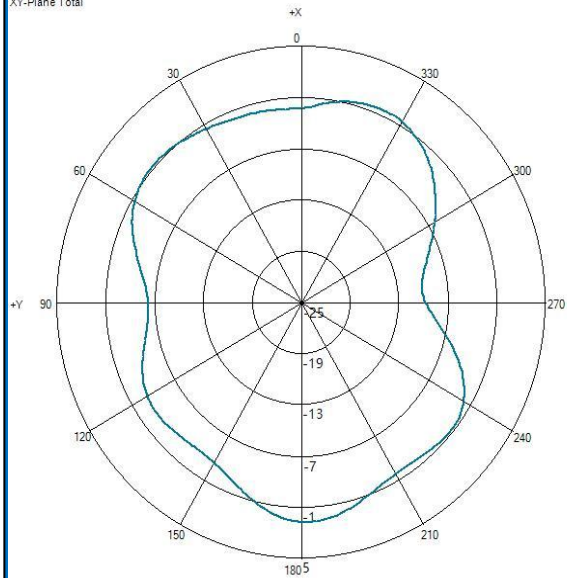


天线3D辐射苹果图

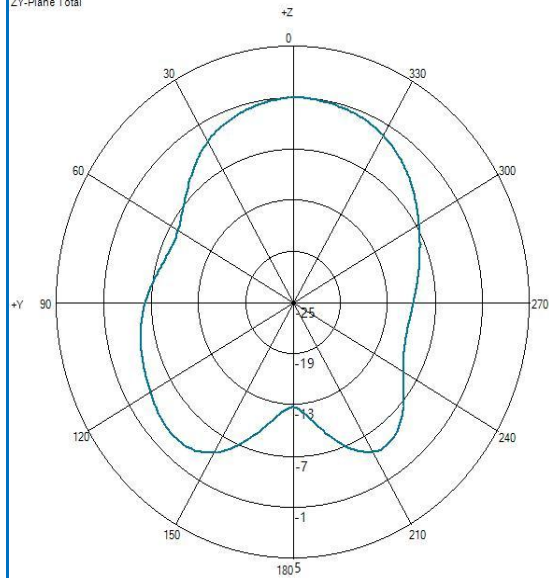


天线2D图

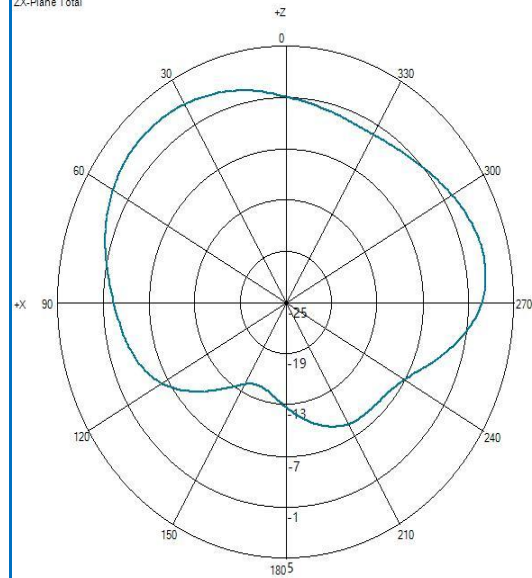
XY-Plane Total



ZY-Plane Total

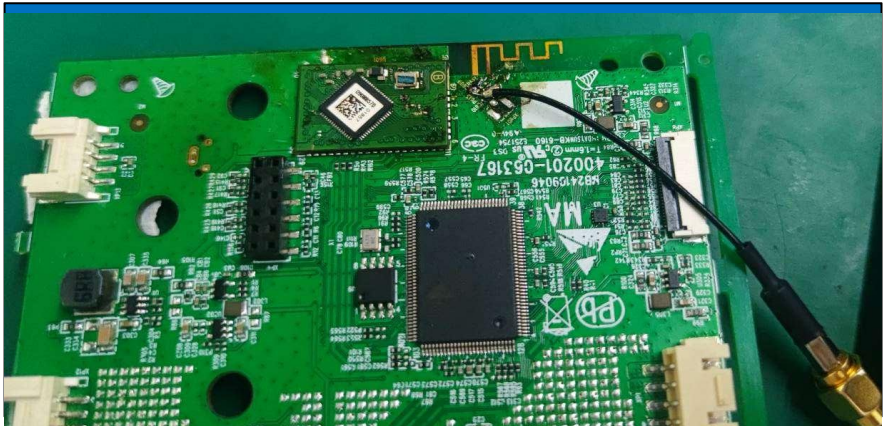


ZX-Plane Total



传导测试数据

传导测试点位

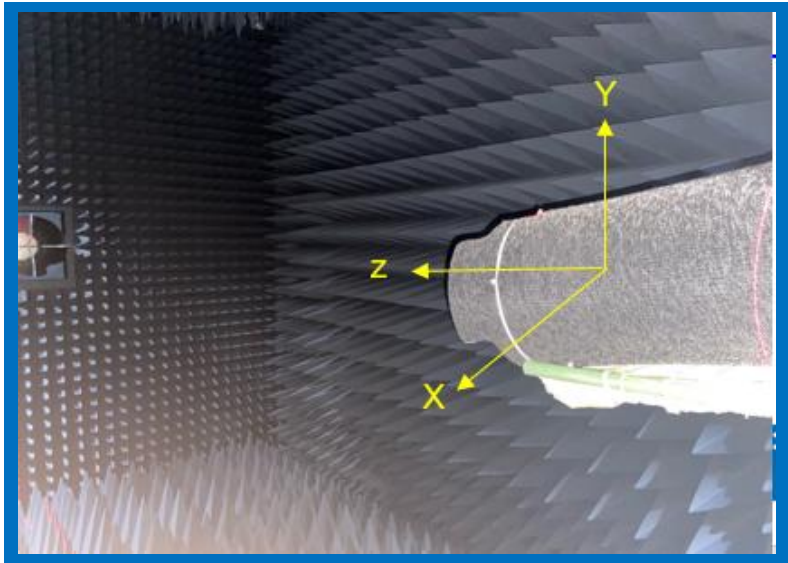


传导测试数据

Item	Channel	BDR (DH5)			EDR 2M (2DH5)		
		Low	Mid	High	Low	Mid	High
	Unit	dBm	dBm	dBm	dBm	dBm	dBm
传导功率		8.37	8.31	8.28	5.88	5.83	5.82
灵敏度		-95	-95	-95	-94.5	-94.5	-94.5



测试环境照



OTA测试数据

序号	测试项目	测试模式	备注	Channel		
				2402M Hz	2441M Hz	2480M Hz
1	TRP	DH5		4.91	5.07	6.1
2	TIS	DH5		-91.25	-91.34	-91.86



结论

从以上测试数据分析，性能基本上符合此类产品指标，满足客户要求。



THANKS

通力電子控股有限公司

