



# Setup Photos

## for SZEM1806005609CR

**FCC ID: ZVA13**

## 1 Photographs

### 1.1 Conducted Emissions at AC Power Line (150kHz-30MHz) Test Setup

JBL Bar3.1-T soundbar



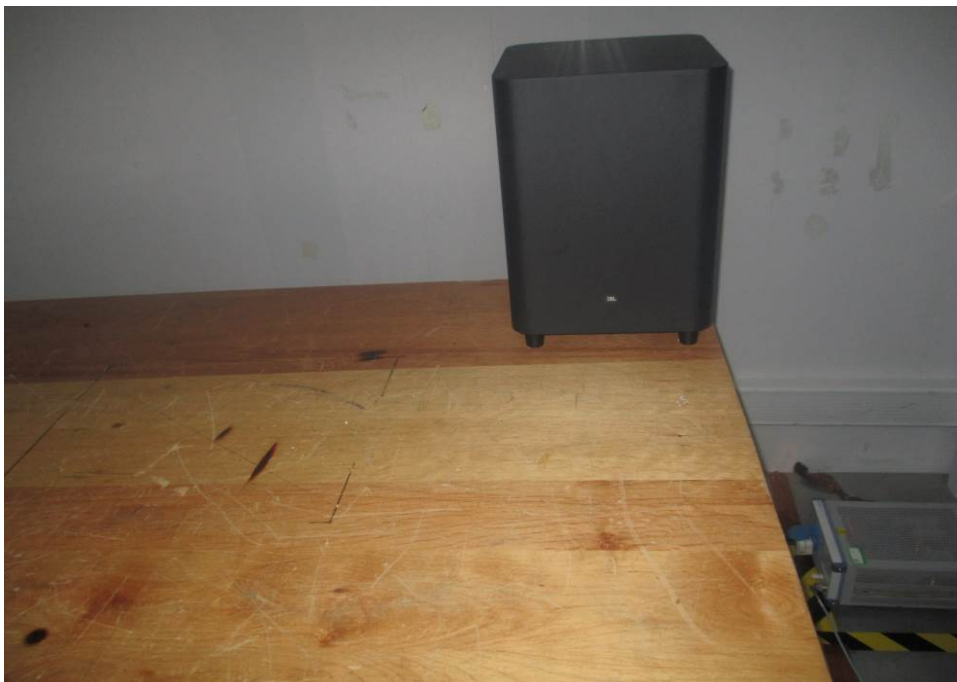
JBL Bar2.1-T soundbar



JBL Bar3.1-T / JBL SW10 subwoofer



JBL Bar2.1-T subwoofer





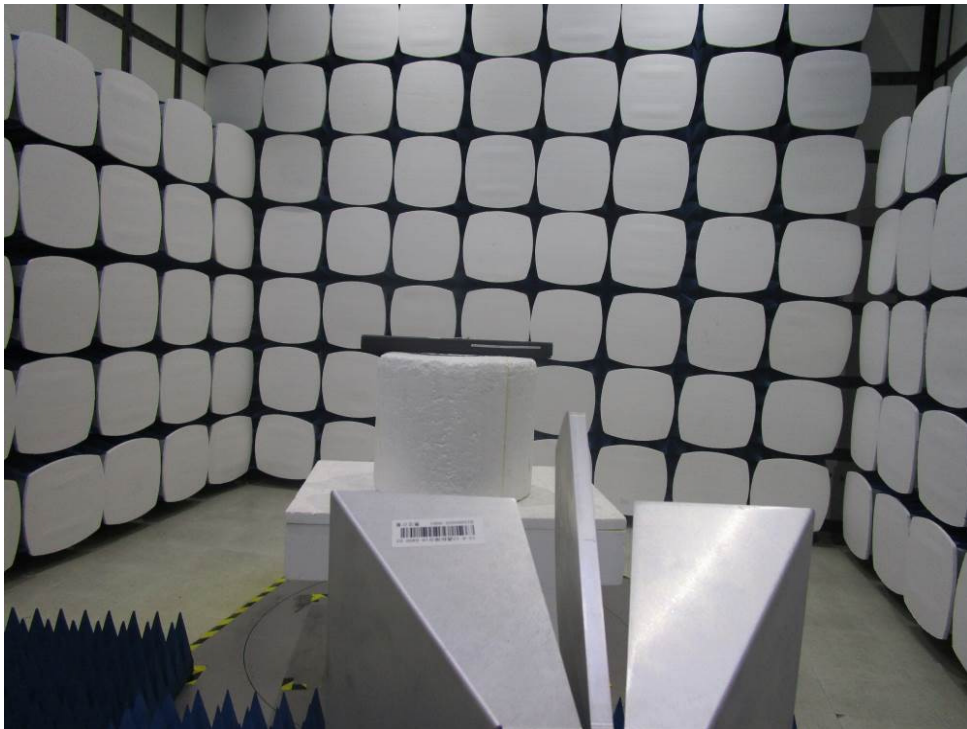
## 1.2 Radiated Emissions Test Setup

JBL Bar2.1-T soundbar

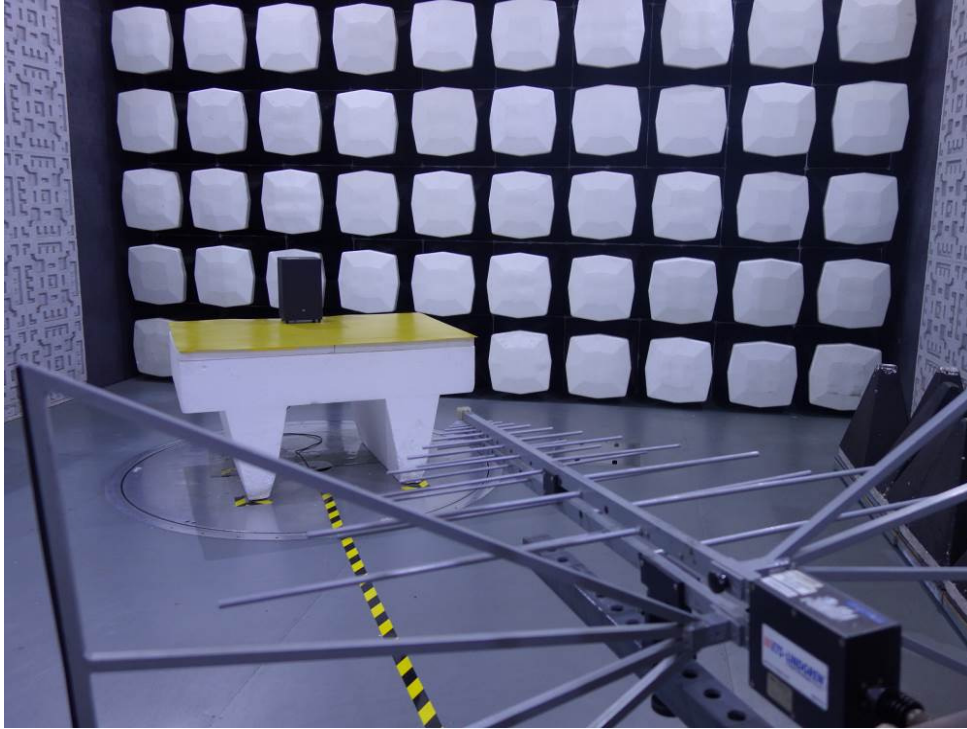
Below 1GHz



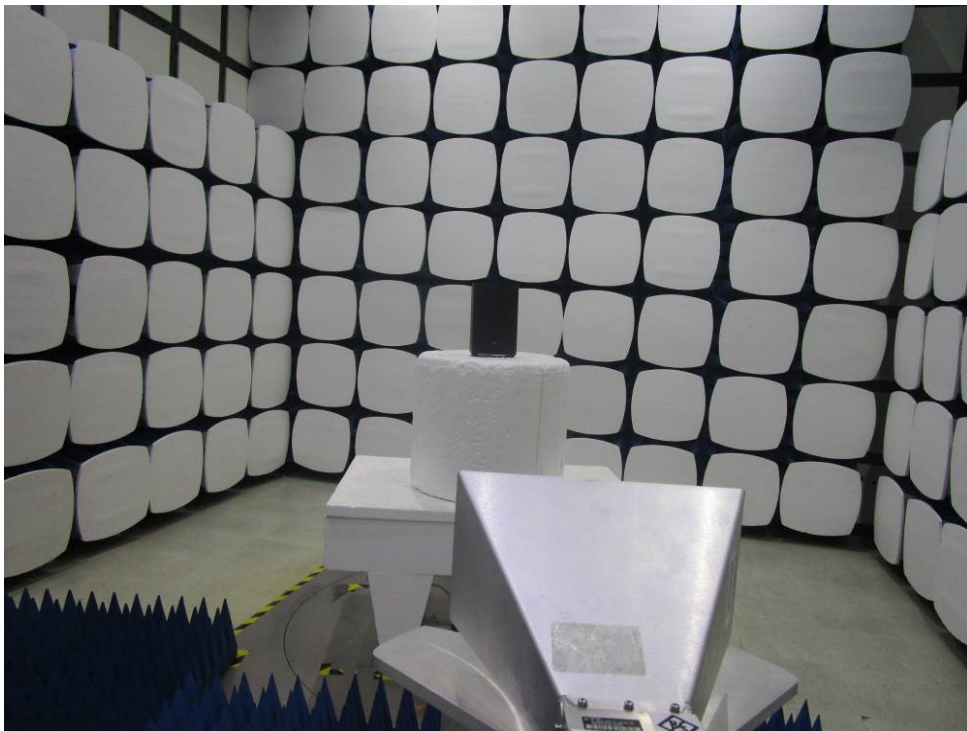
Above 1GHz



JBL Bar2.1-T subwoofer  
Below 1GHz

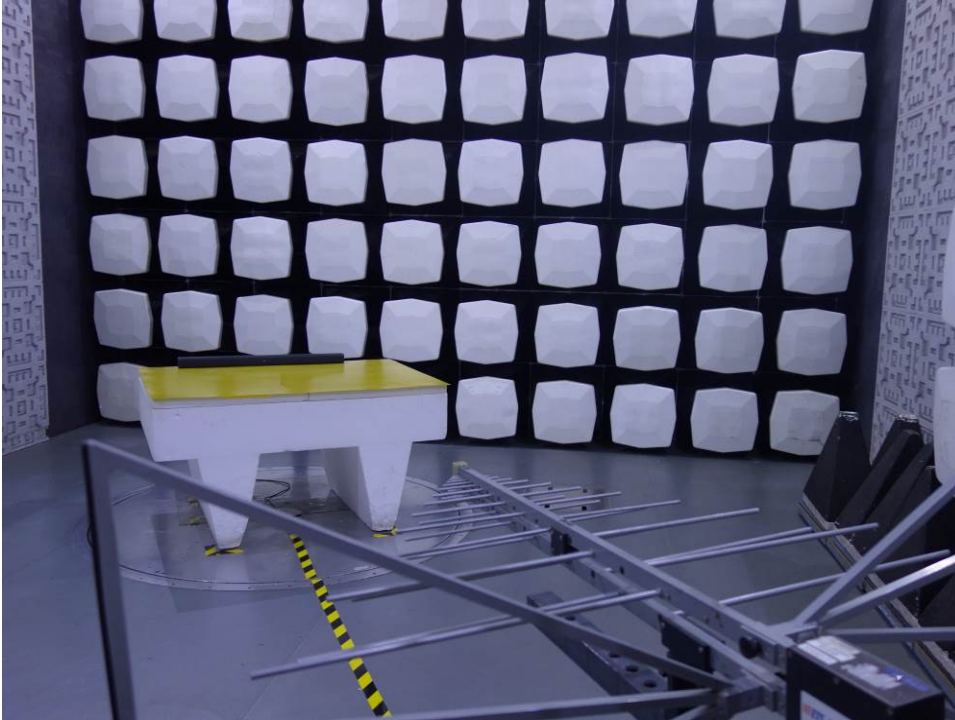


Above 1GHz

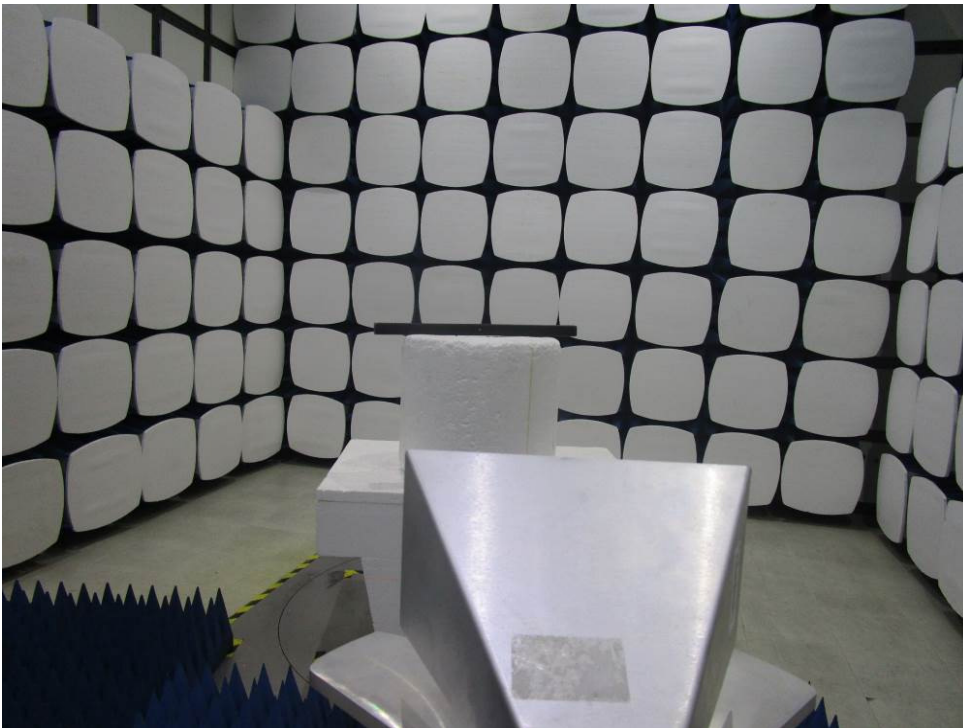




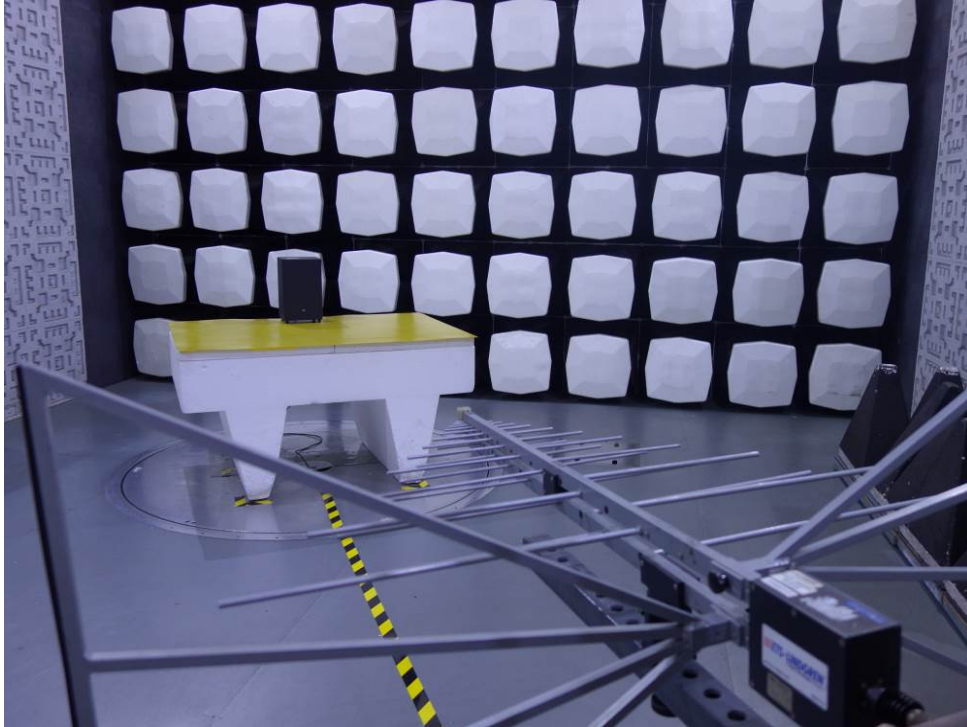
JBL Bar3.1-T soundbar  
Below 1GHz



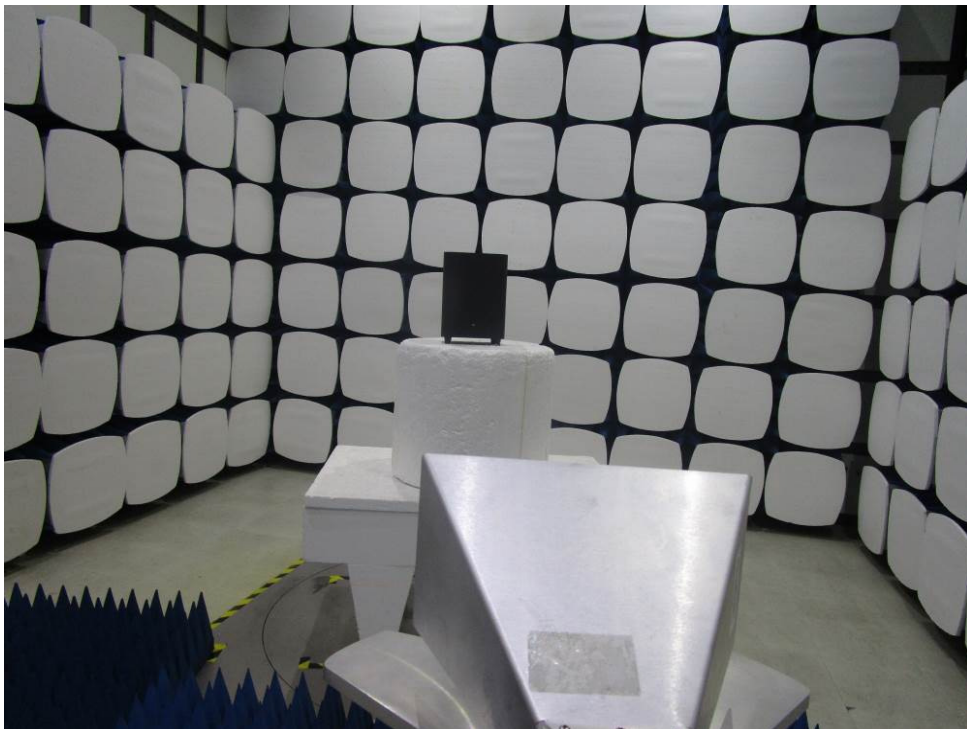
Above 1GHz



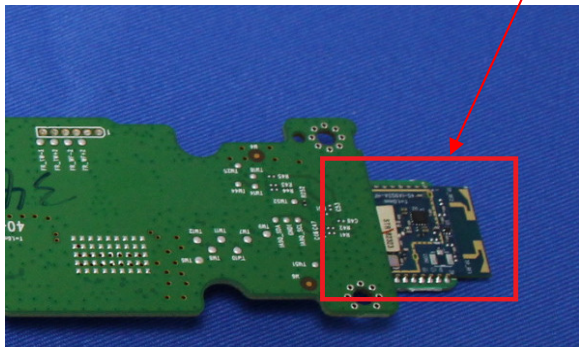
JBL Bar3.1-T / JBL SW10 subwoofer  
Below 1GHz



Above 1GHz

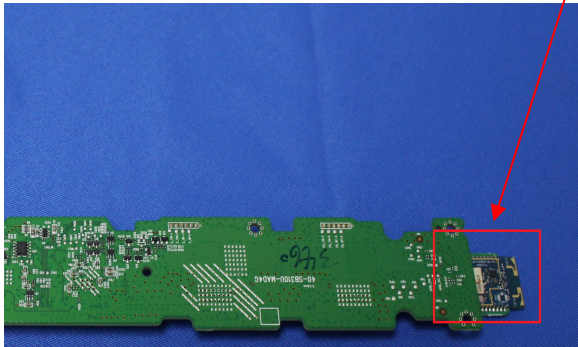


JBL Bar3.1-T soundbar:





JBL Bar2.1-T soundbar:



JBL Bar2.1-T / JBL Bar3.1-T / JBL SW10 subwoofer

