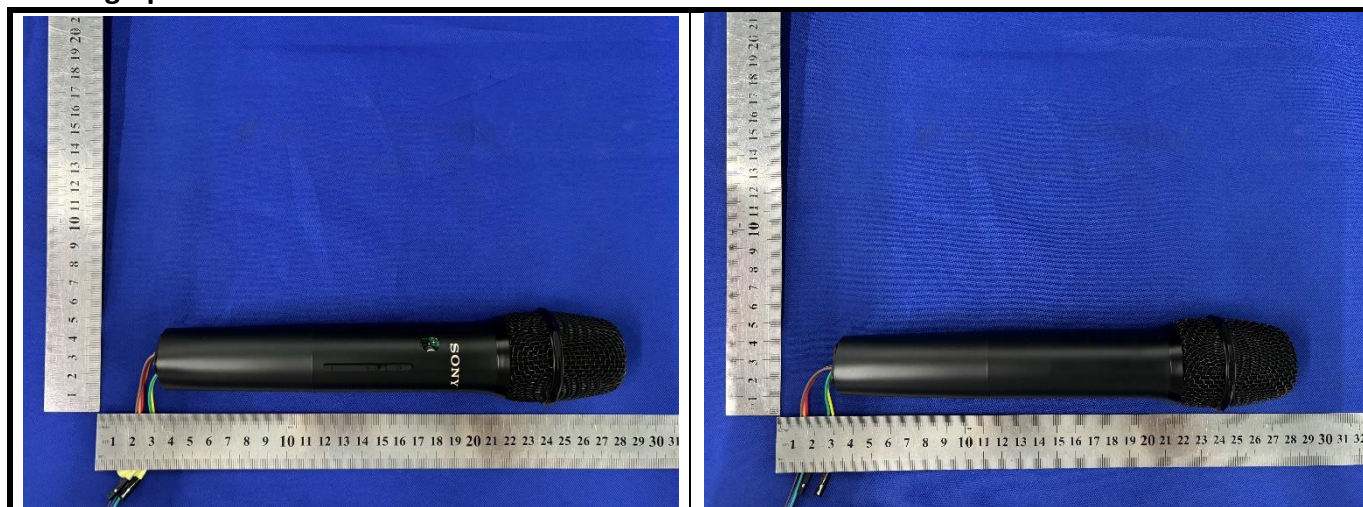
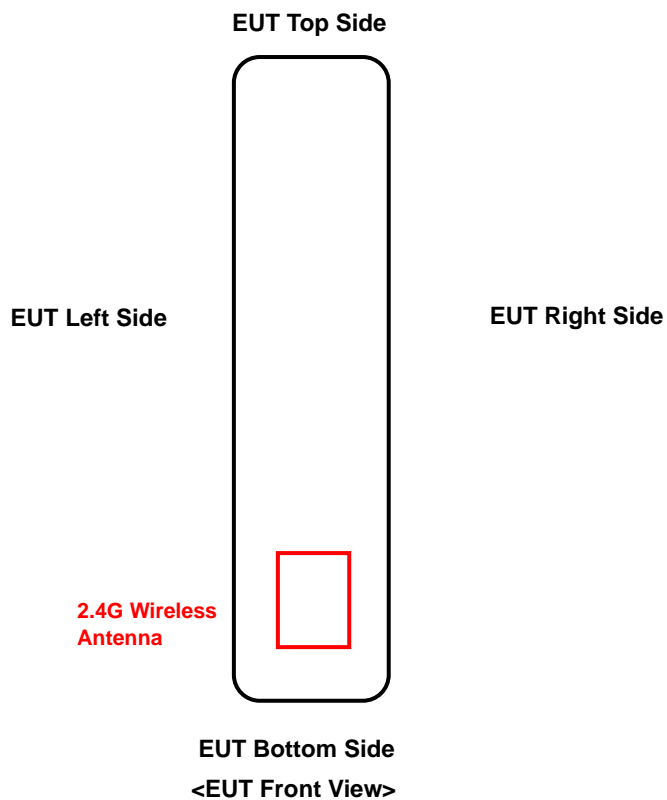


<Photographs of EUT>



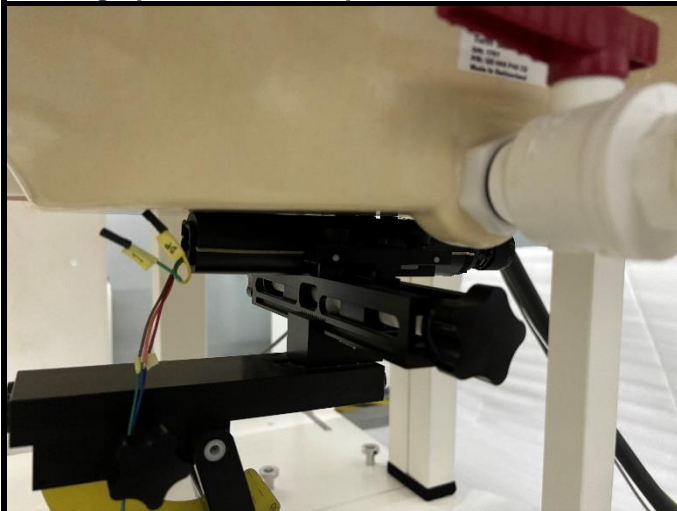
<Antenna Location>



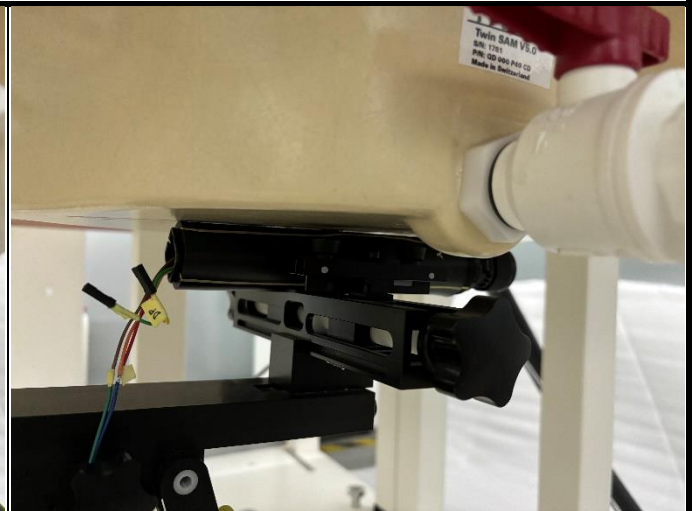
The separation distance for antenna to edge:

Antenna	To Left Side (mm)	To Right Side (mm)	To Top Side (mm)	To Bottom Side (mm)
2.4G Wireless	6.49	6.03	212	13.4

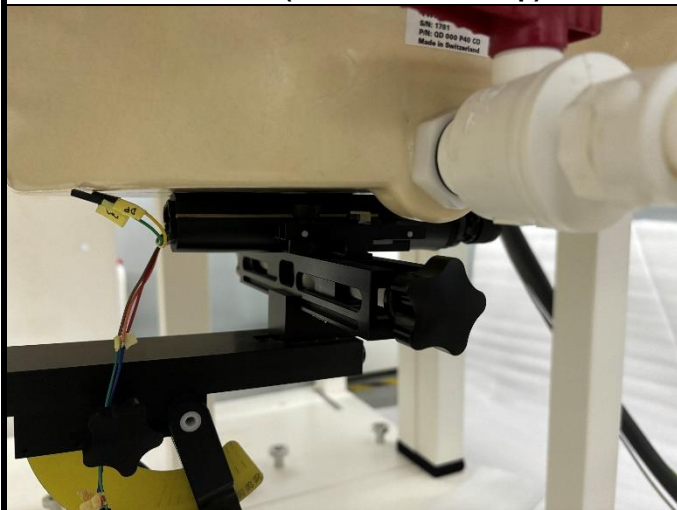
<Photographs of SAR Setup>



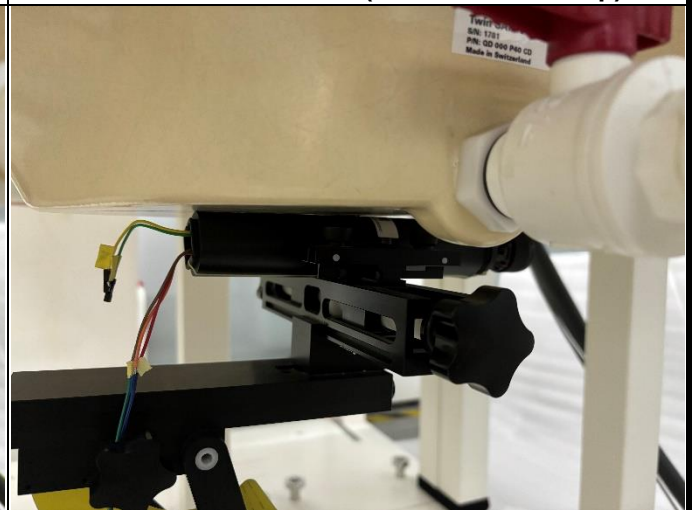
**Front Side (EUT with 0 cm Gap)**



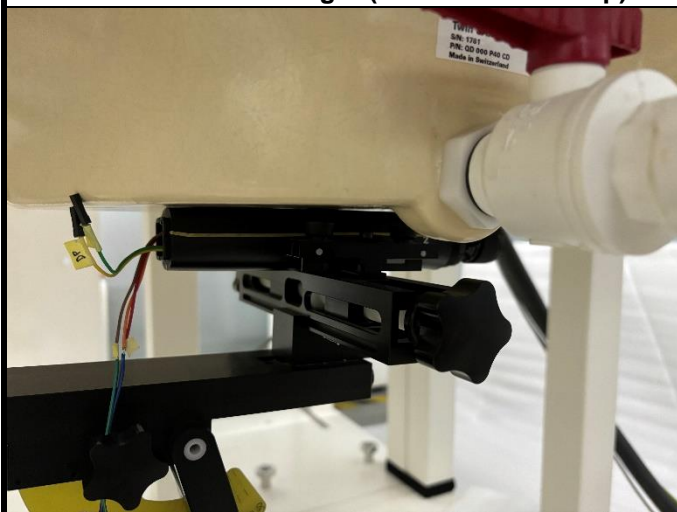
**Curved surface of Left (EUT with 0 cm Gap)**



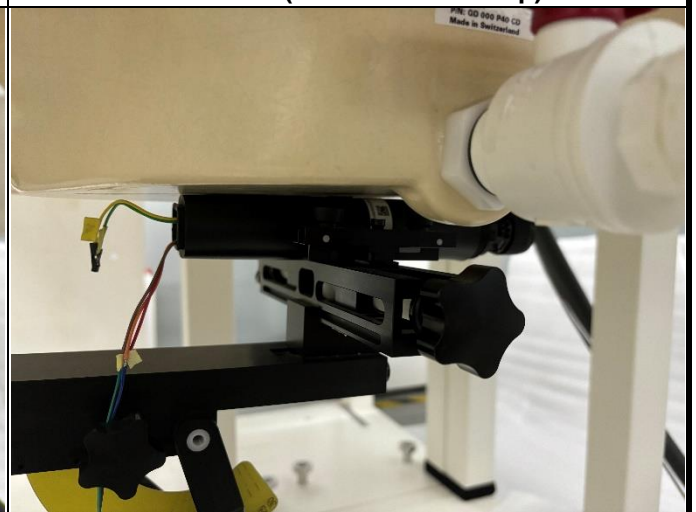
**Curved surface of Right (EUT with 0 cm Gap)**



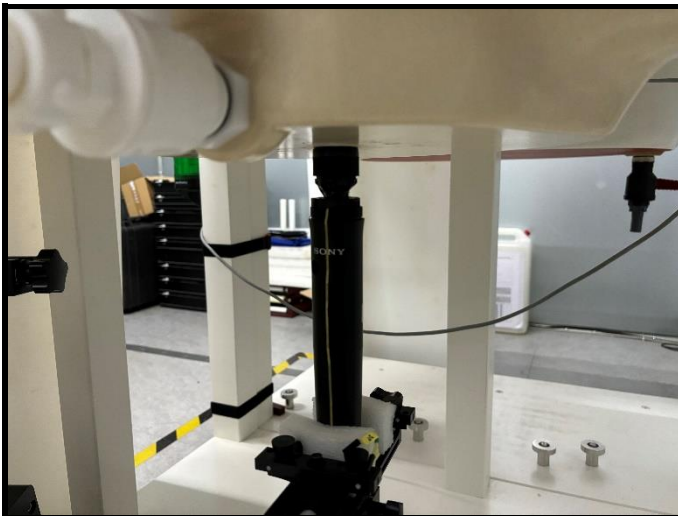
**Rear Side (EUT with 0 cm Gap)**



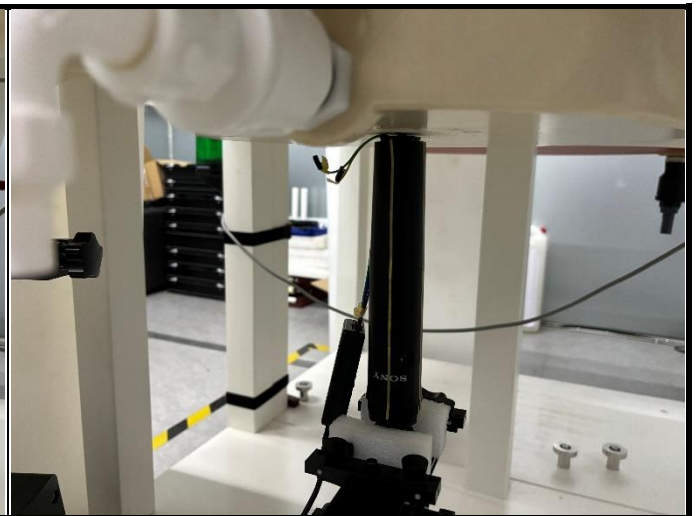
**Left Side (EUT with 0 cm Gap)**



**Right Side (EUT with 0 cm Gap)**



Top Side (EUT with 0 cm Gap)



Bottom Side (EUT with 0 cm Gap)