

DRAWN

DATE

MODEL:

M855E

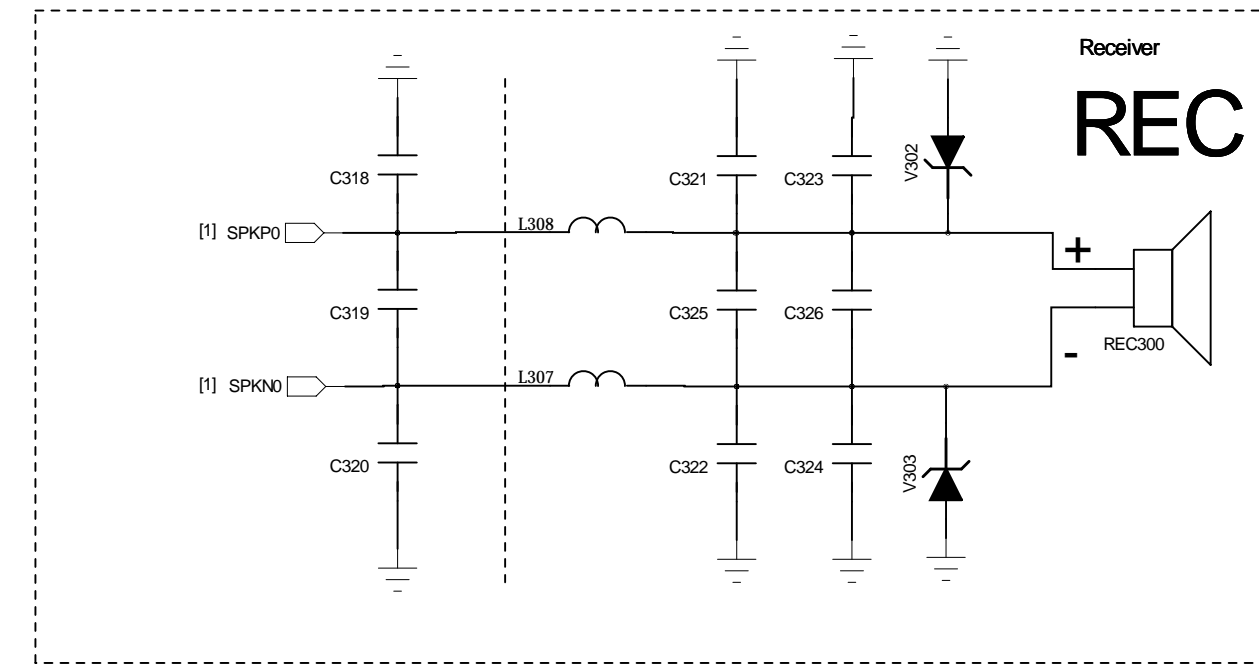
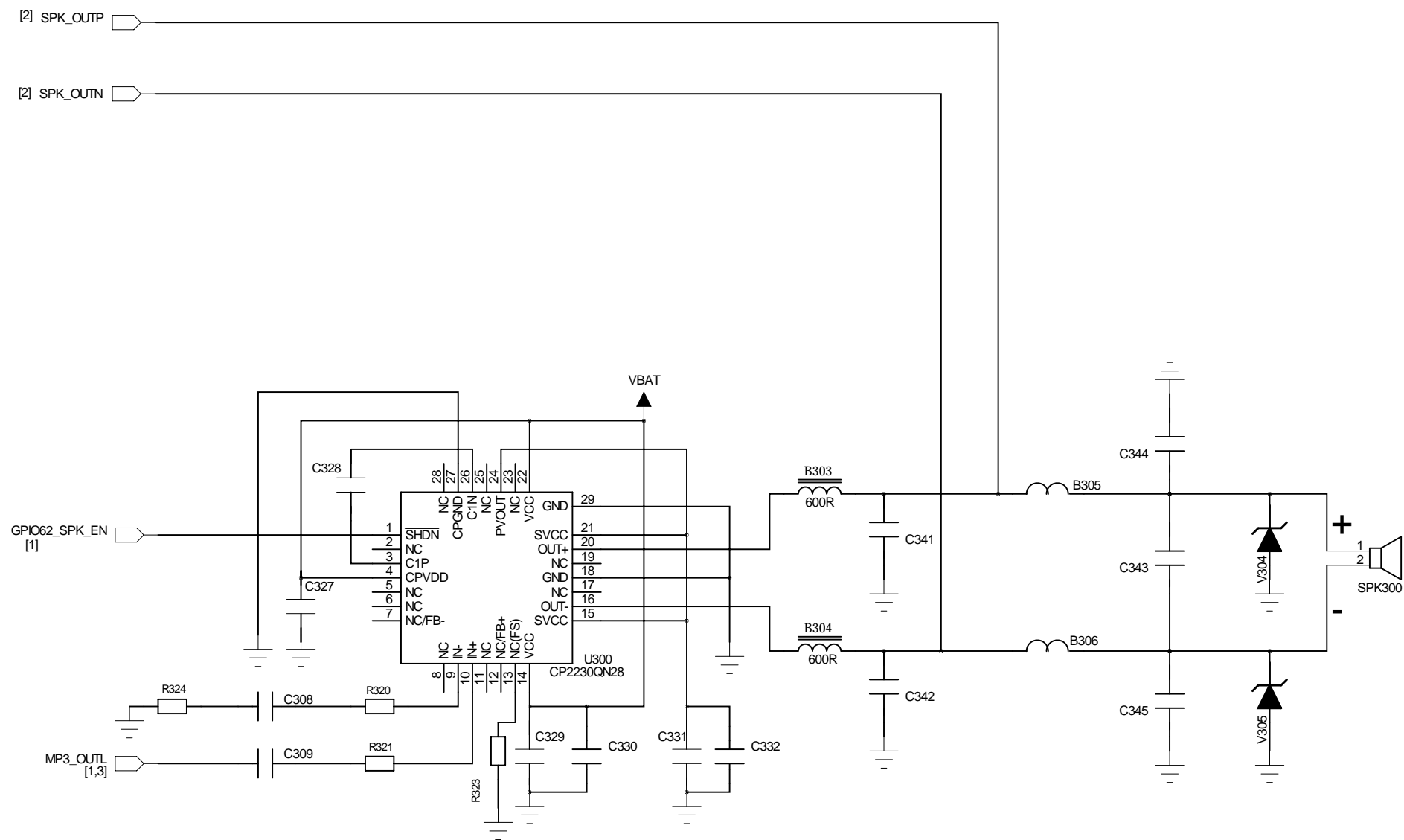
CHECKED

TIME

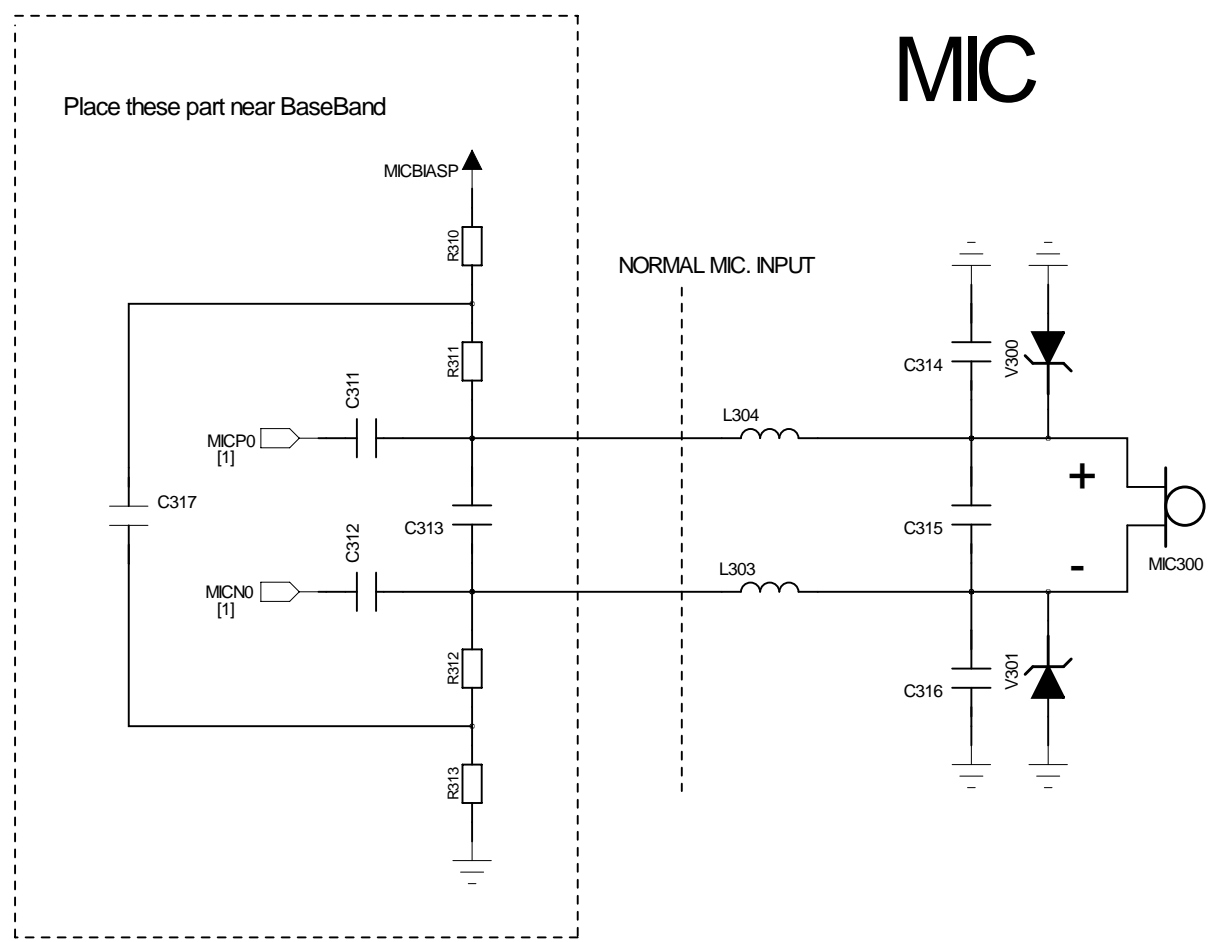
TITLE:

VERSION

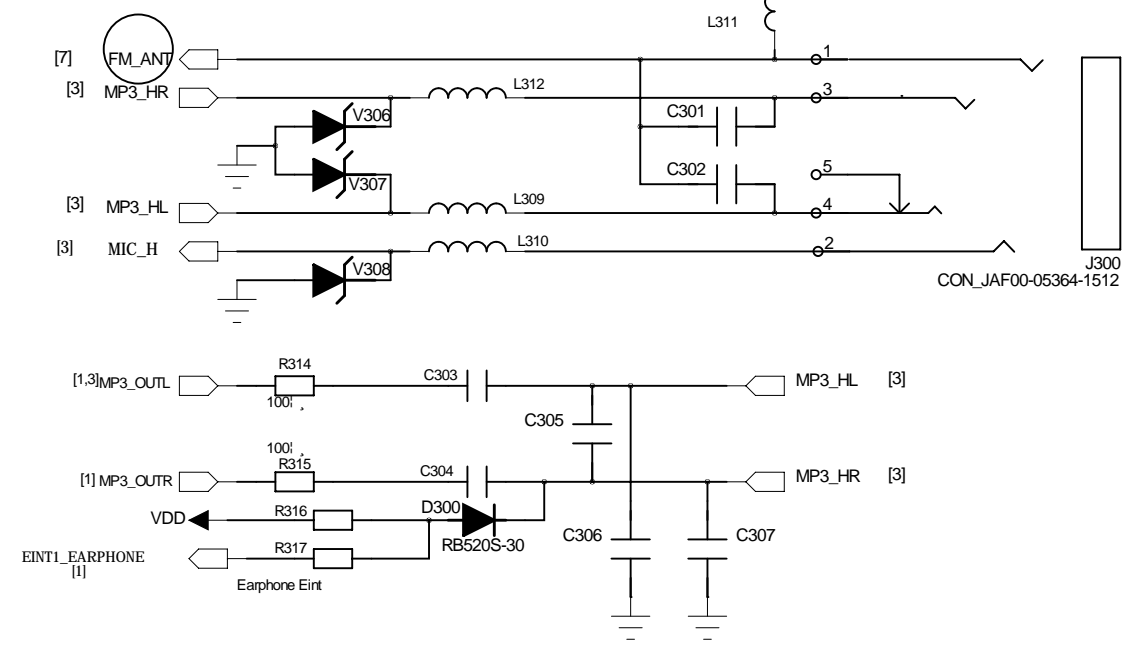
SPK1



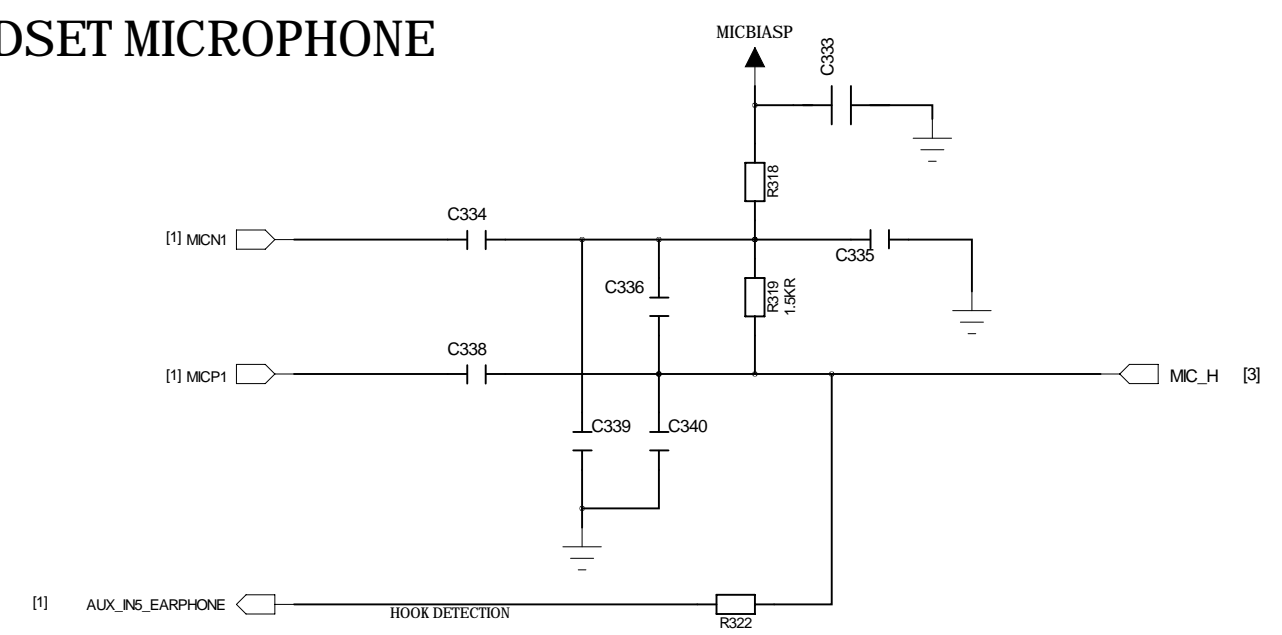
MICROPHONE



3.5mm Phone Jack



HEADSET MICROPHONE



DRAWN

DATE

MODEL:

M855E

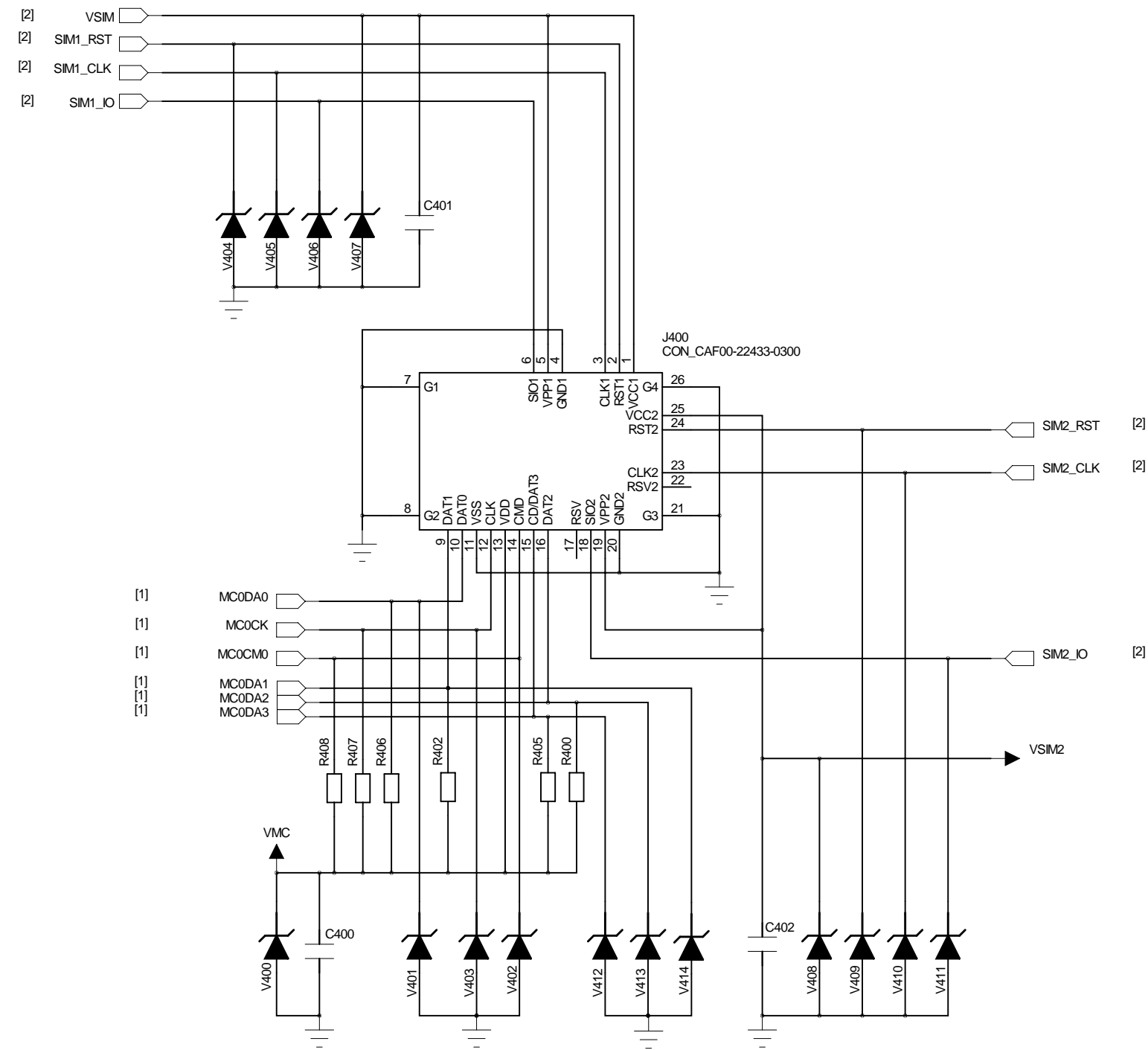
CHECKED

TIME

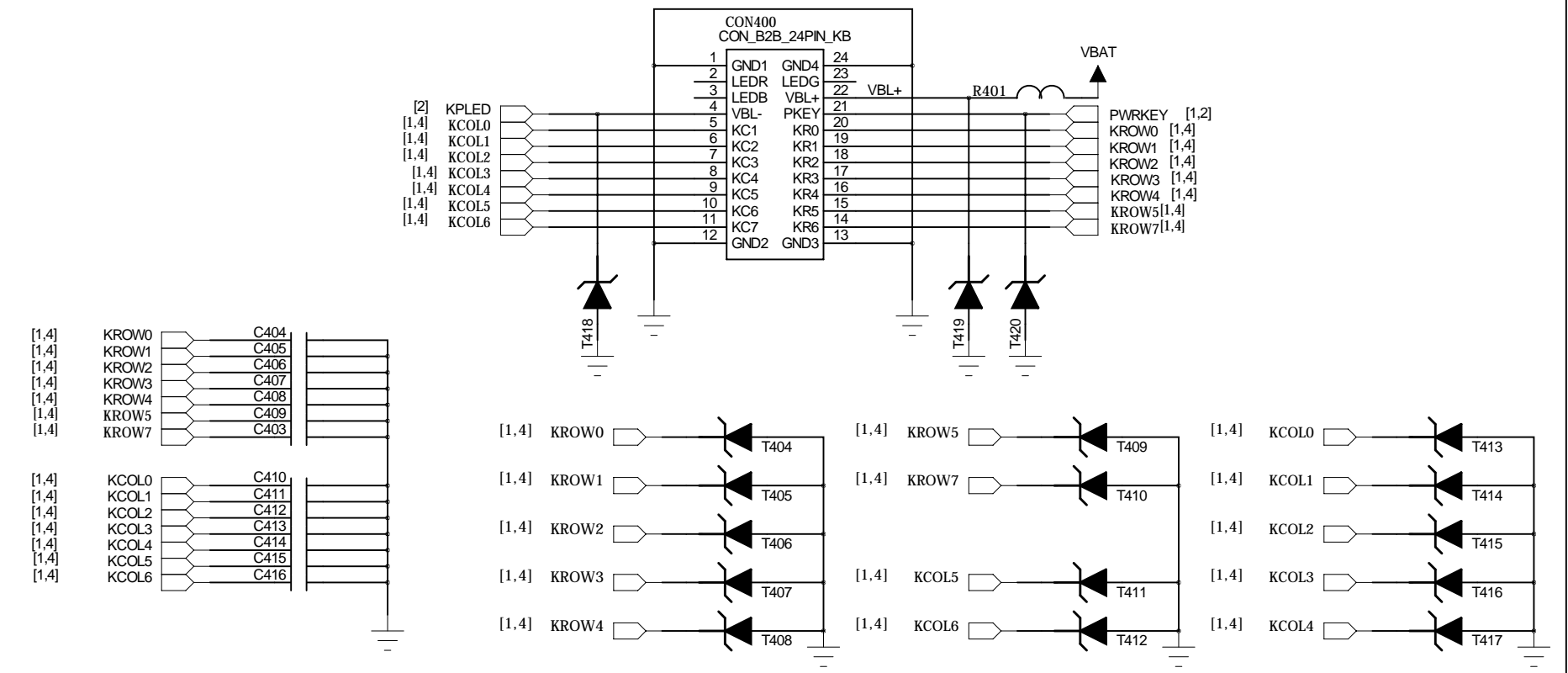
TITLE:

VERSION

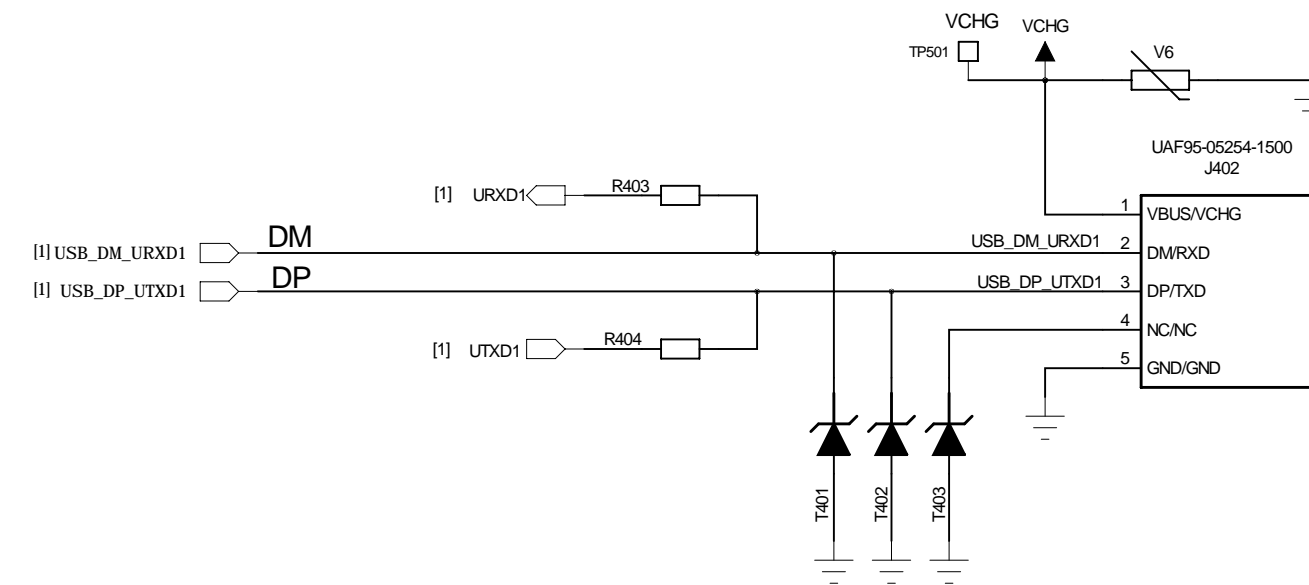
3-in-1 Socket(TF+2SIM Cards)



Keypad Connector



Micro USB 5pin Socket



DRAWN

DATE

MODEL:

M855E

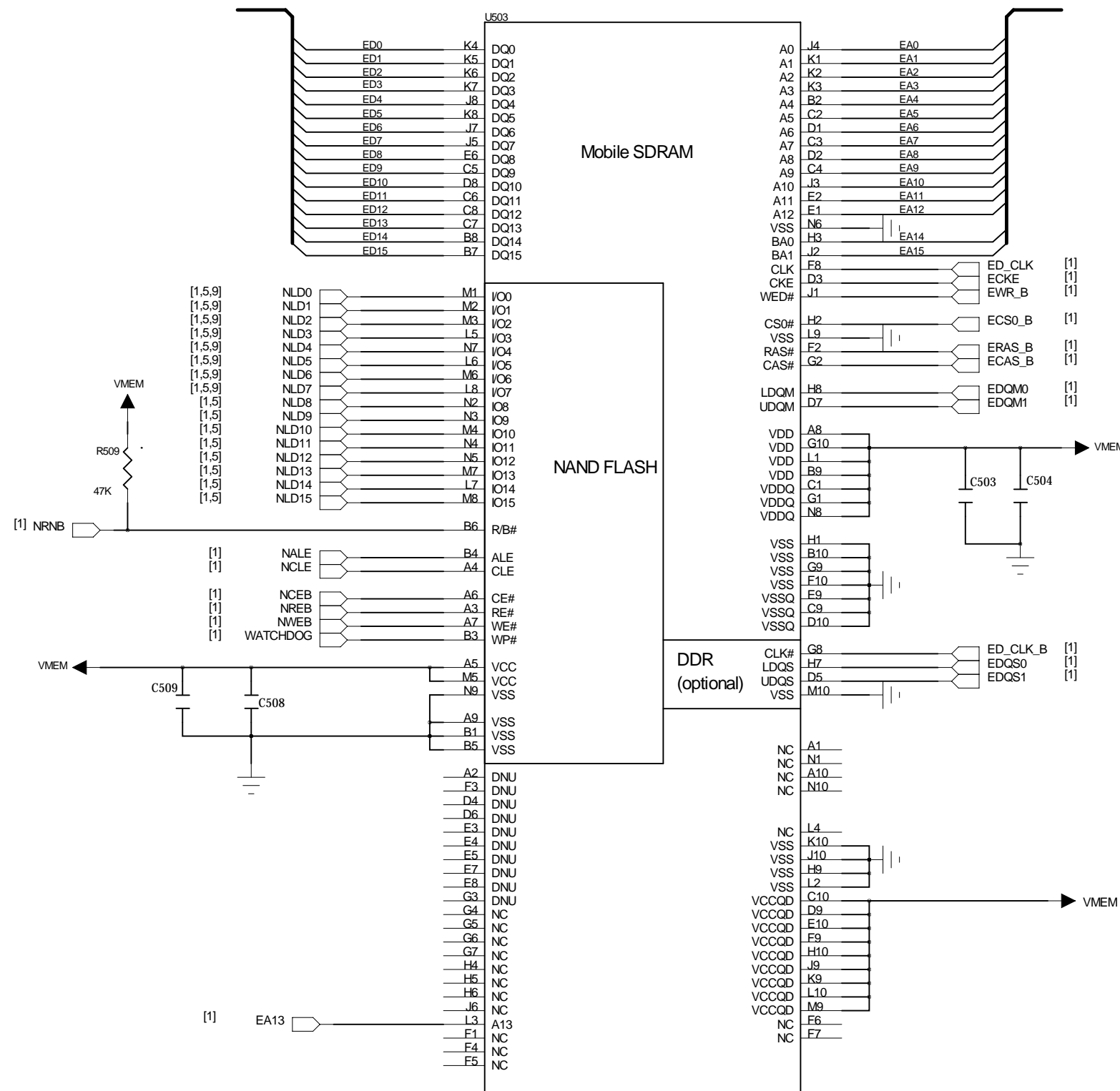
CHECKED

TIME

TITLE:

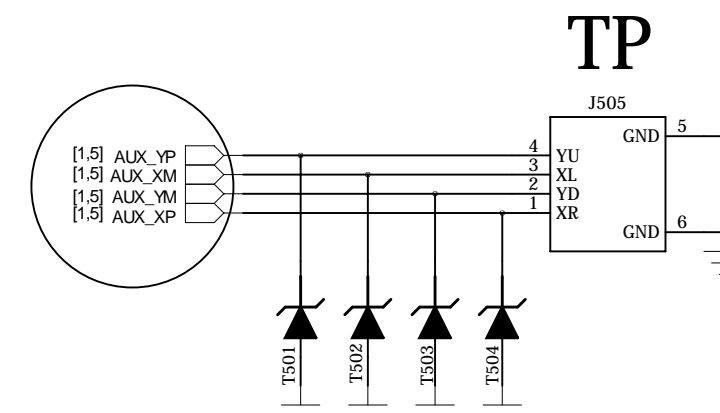
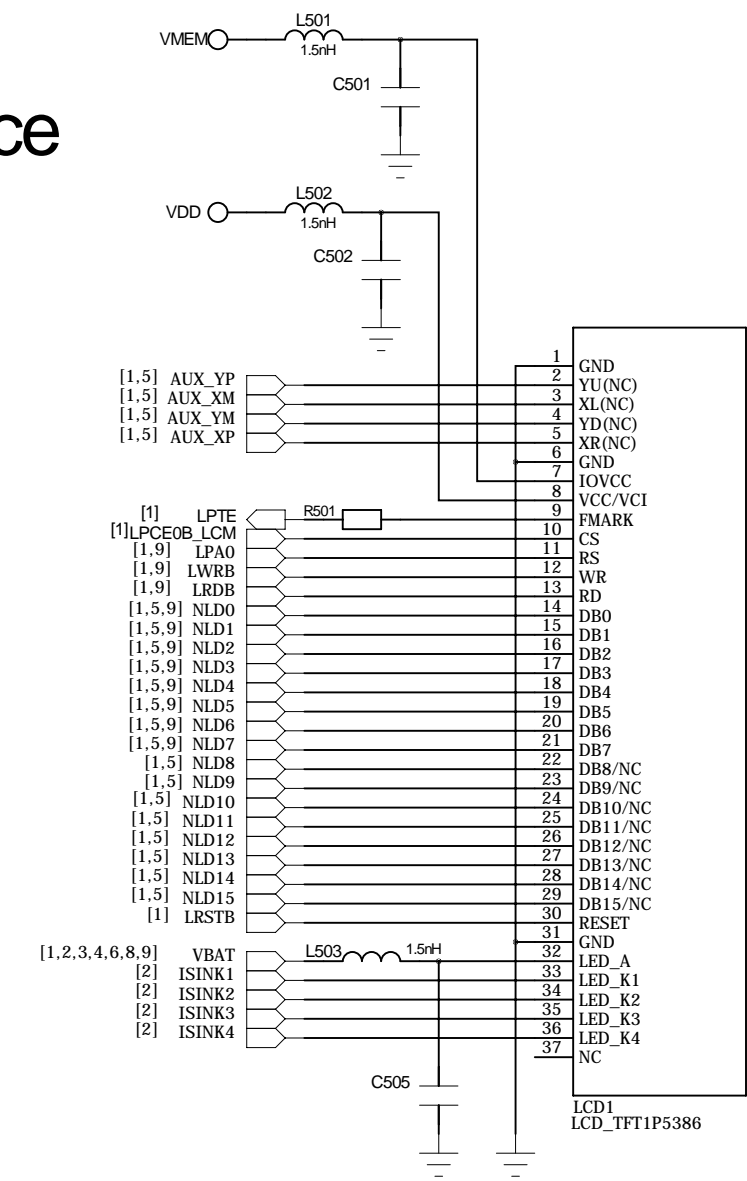
VERSION

NAND FLASH + Mobile SDRAM



Note: the power supply of NFI bus is 1.8V.

LCM 16-bit LCD Interface



DRAWN

DATE

MODEL:

M855E

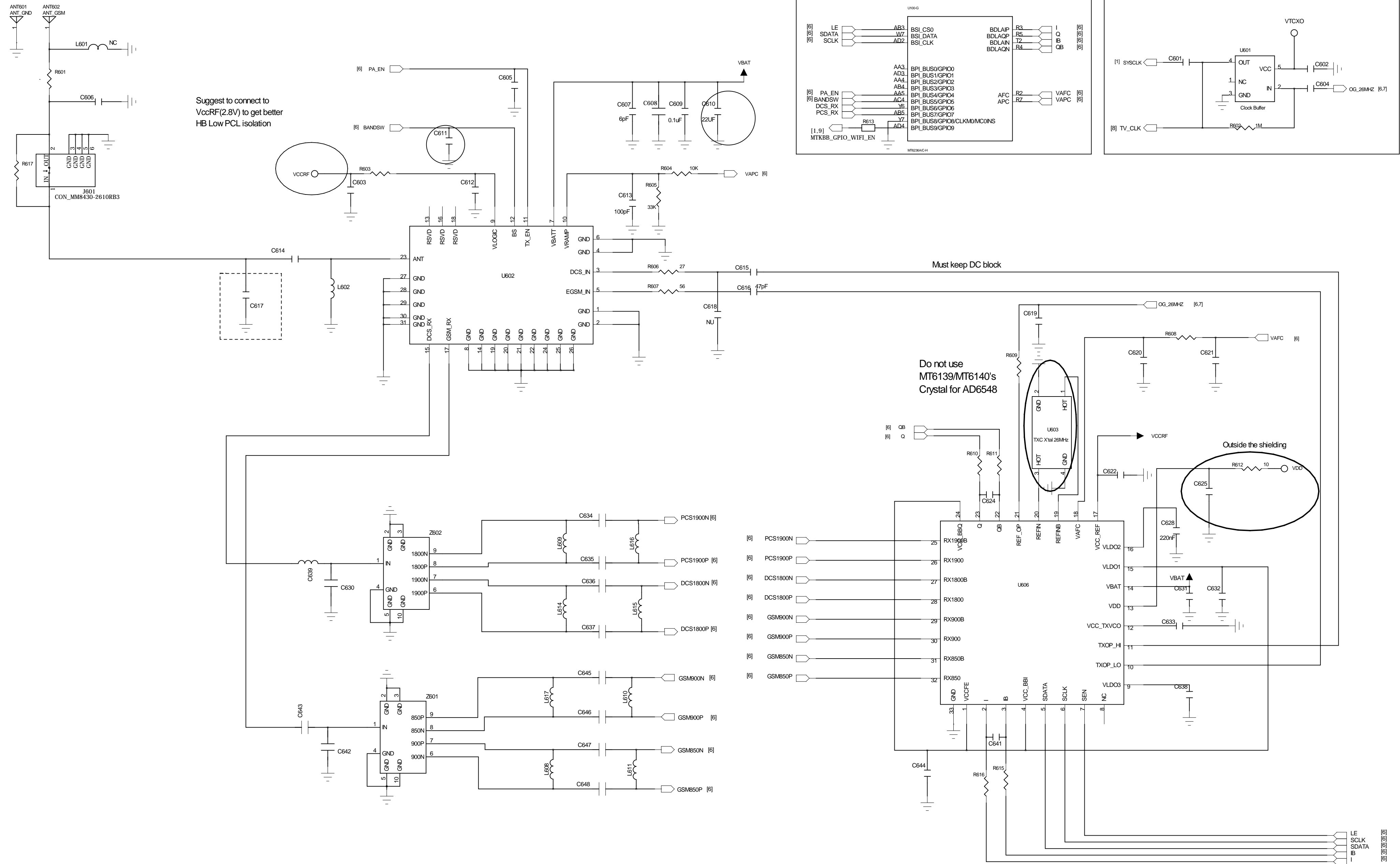
CHECKED

TIME

TITLE:

VERSION

AD6548+SKY77542



DRAWN

DATE

MODEL:

M855E

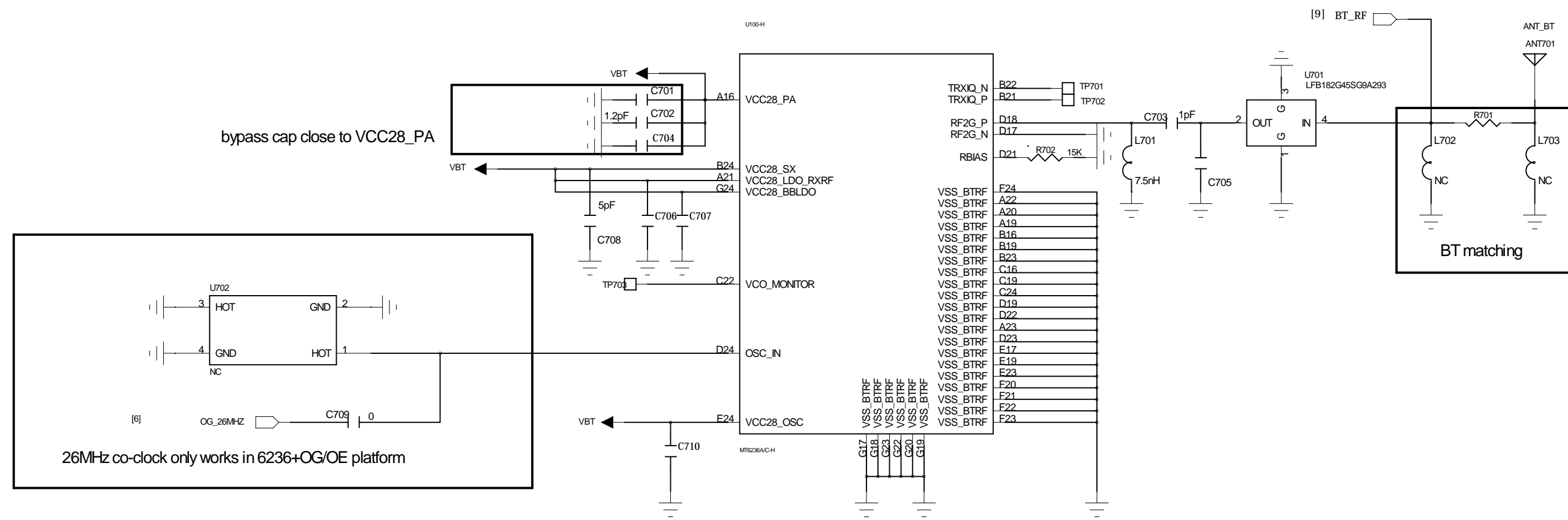
CHECKED

TIME

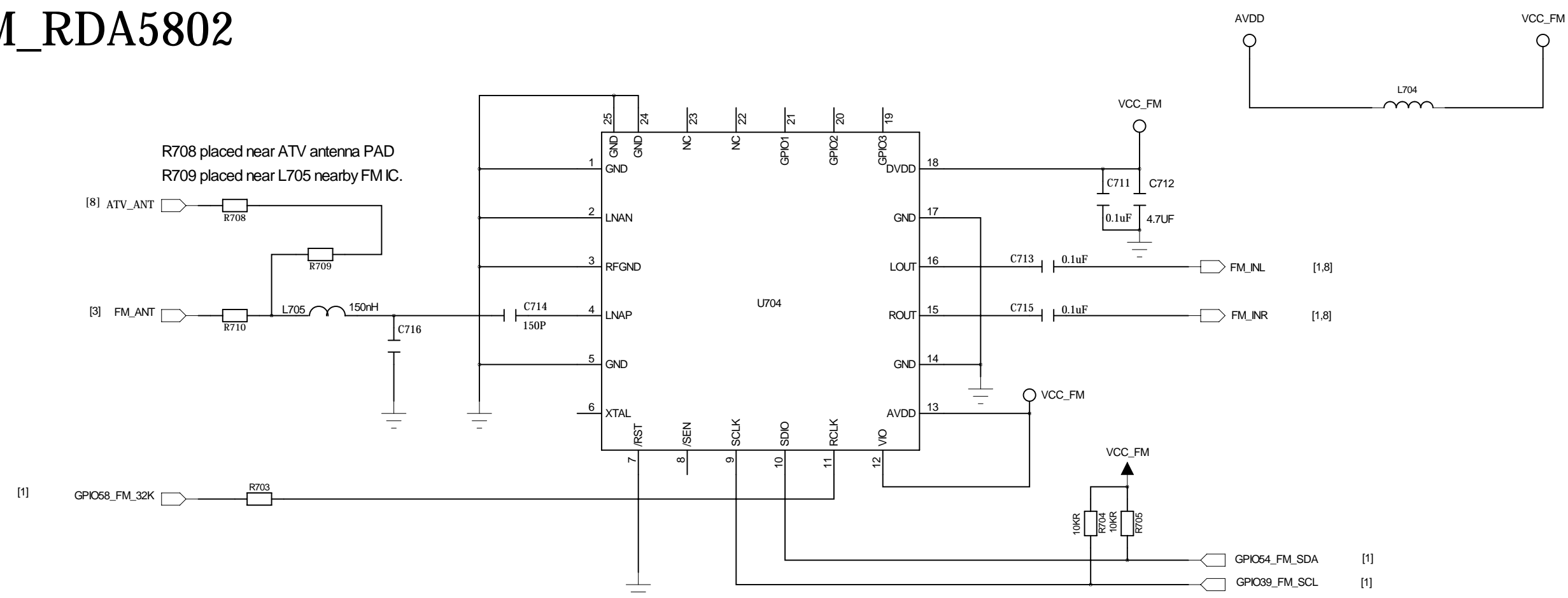
TITLE:

VERSION

Bluetooth embedded



FM_RDA5802



DRAWN

DATE

MODEL:

M855E

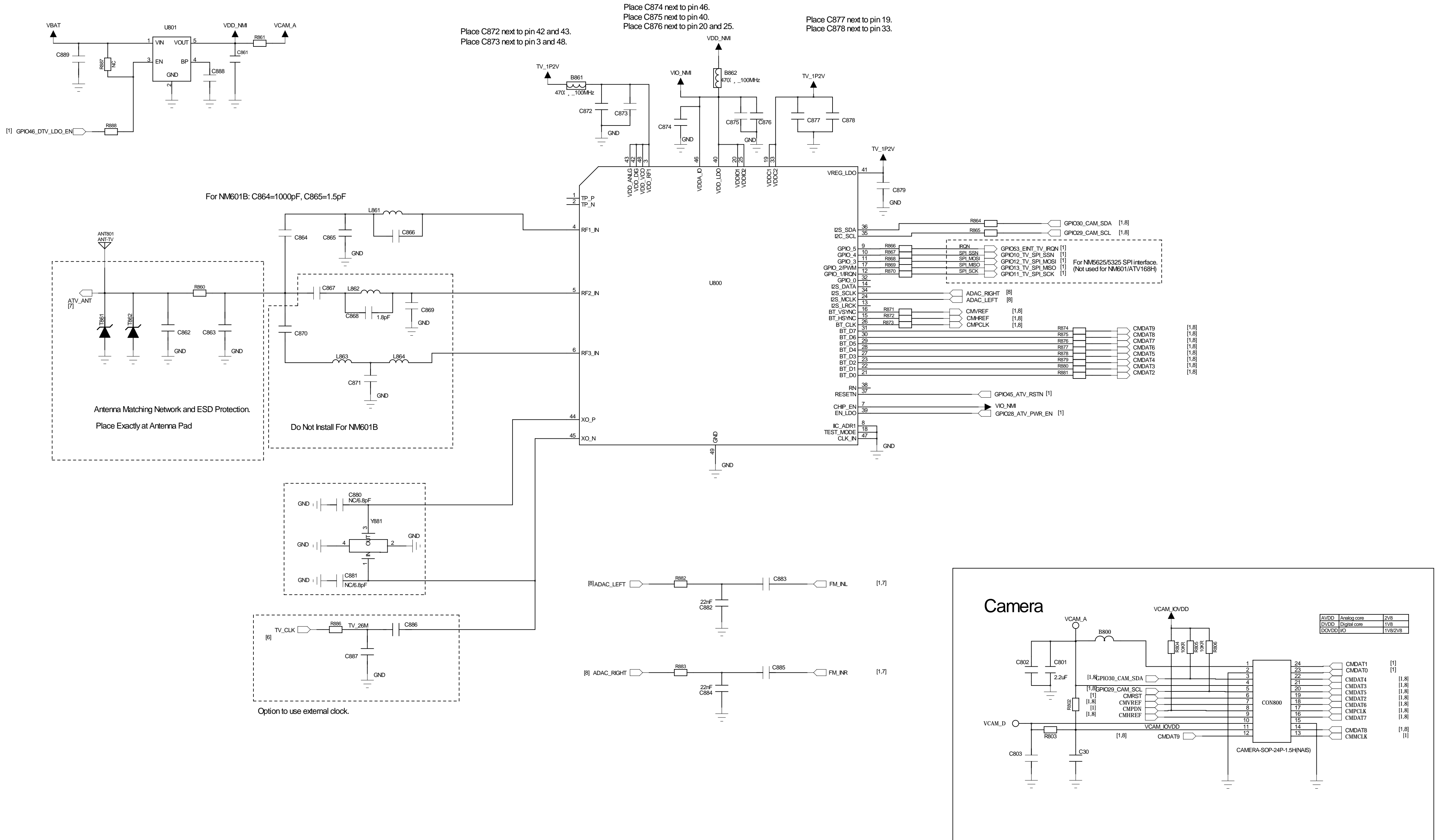
CHECKED

TIME

TITLE:

VERSION

ATV_NMI601B/ATV168H
ATV + ISDB-T_NMI5625



DRAWN

DATE

MODEL:

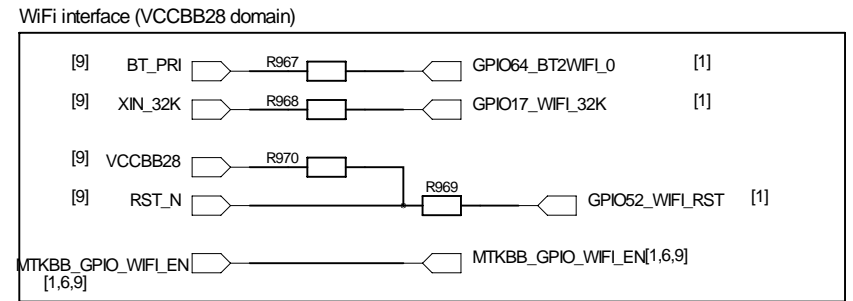
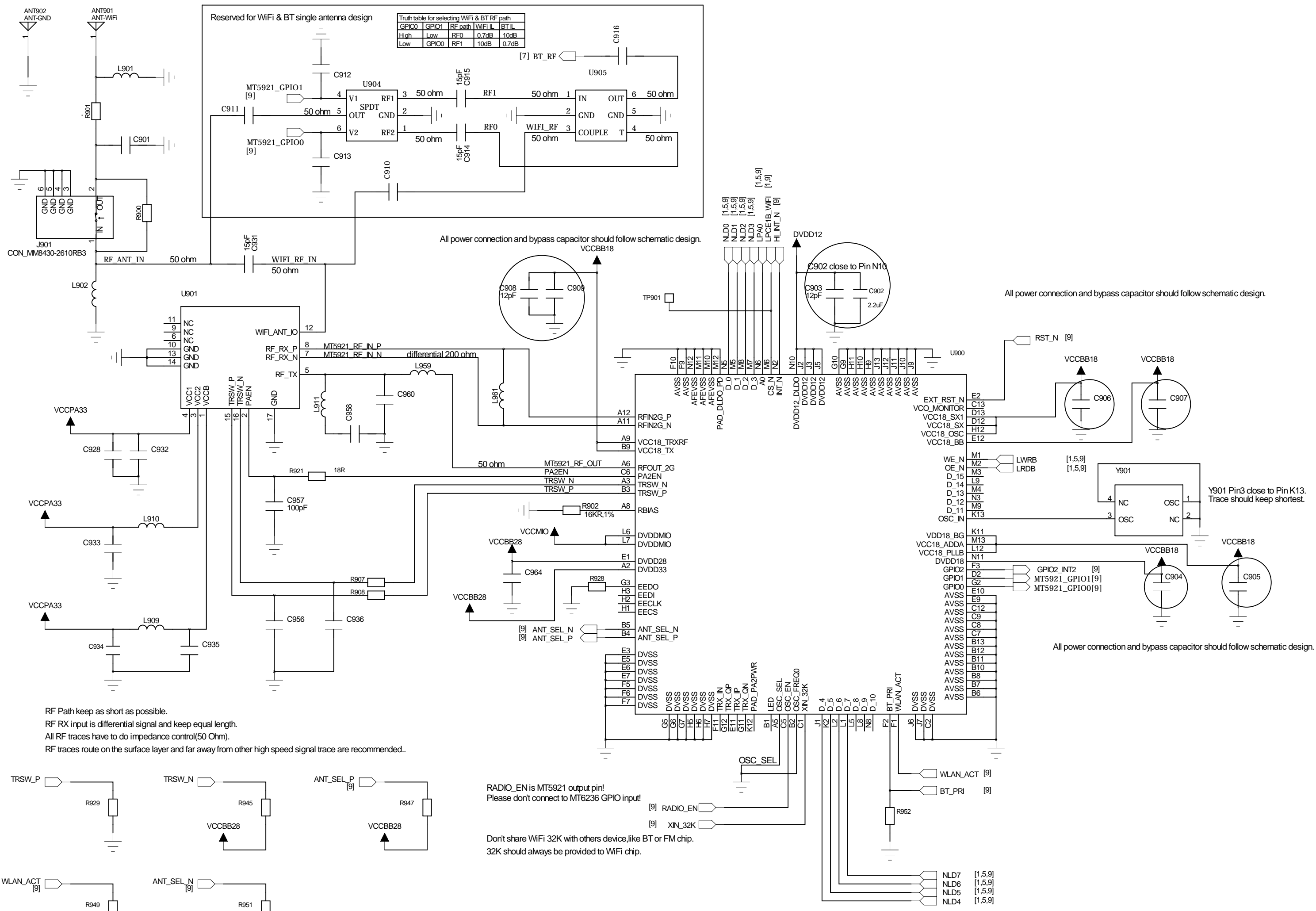
M855E

CHECKED

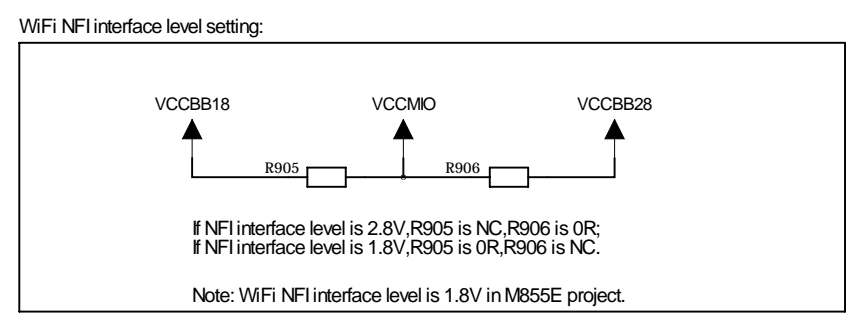
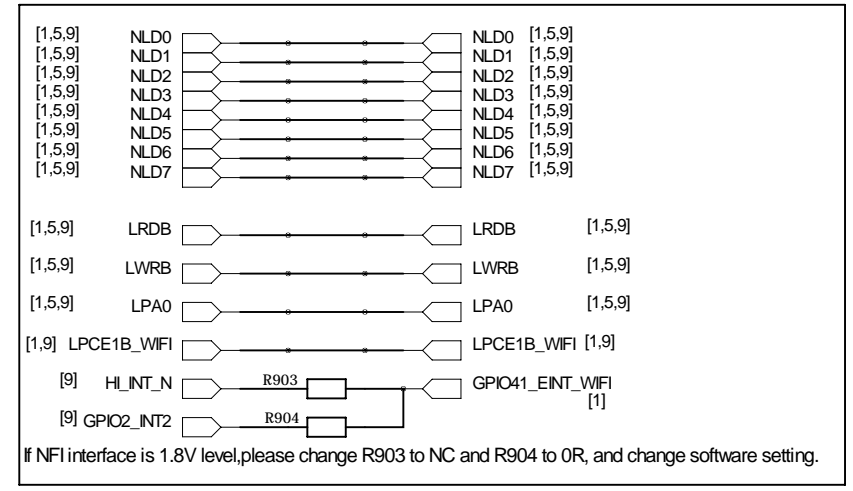
TIME

TITLE:

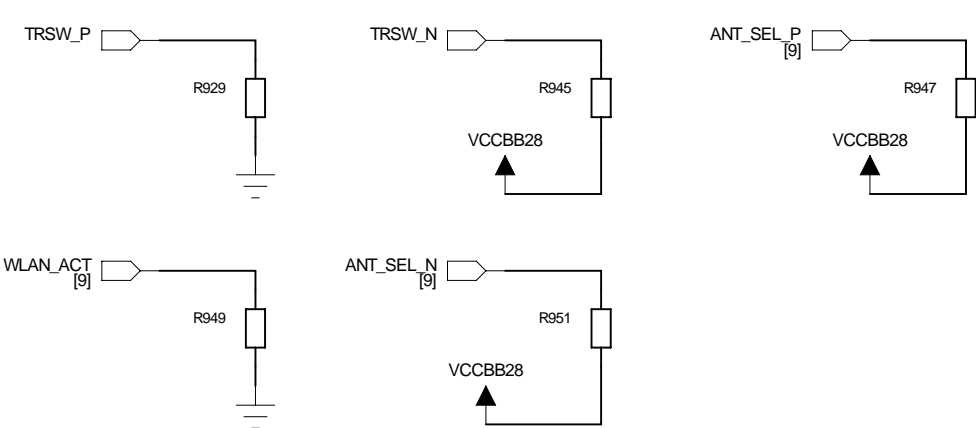
VERSION



WiFi interface (VCCMIO domain)
 Please confirm the power supply of NFI bus is 1.8V or 2.8V.
 WiFi share NFI bus with LCD and NAND flash, so their power supply should be same.



RF Path keep as short as possible.
 RF RX input is differential signal and keep equal length.
 All RF traces have to do impedance control(50 Ohm).
 RF traces route on the surface layer and far away from other high speed signal trace are recommended..



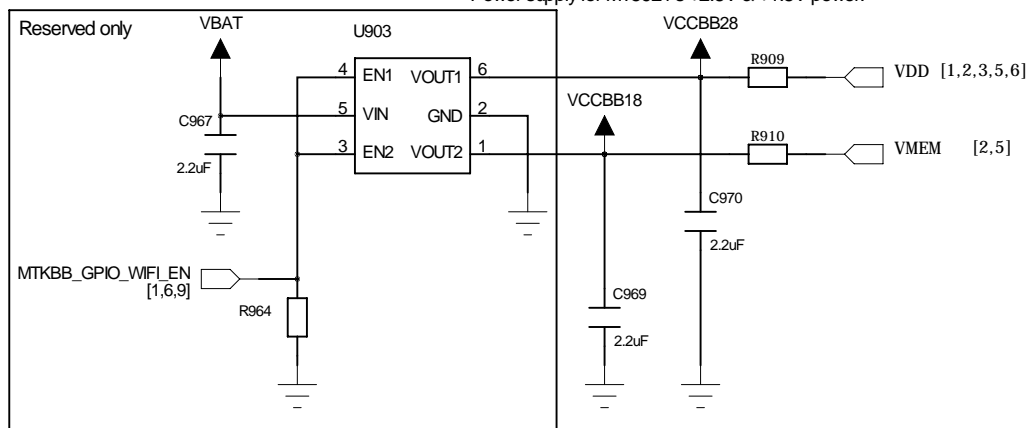
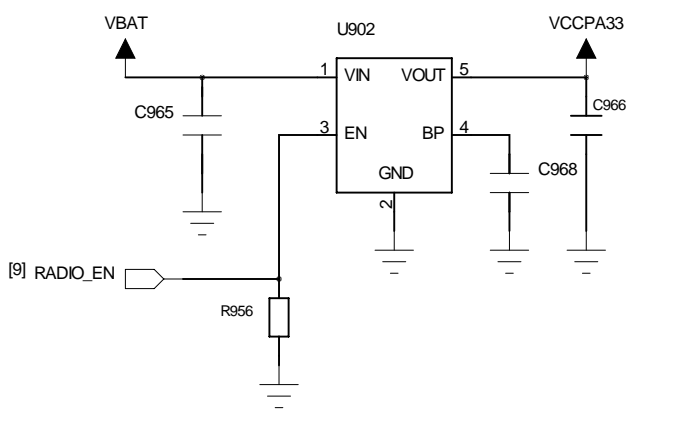
RADIO_EN is MT5921 output pin!
 Please don't connect to MT6236 GPIO input!
 Don't share WiFi 32K with others device, like BT or FM chip.
 32K should always be provided to WiFi chip.

MODE SELECTION(H/W Strap pin setting, default please use HPI 8bit setting)

MODE	TRSW_P:	TRSW_N:	ANTSEL_P
EHP16	0 (pull low)	1 (pull high)	0 (pull low)
EHP1B	0 (pull low)	1 (pull high)	1 (pull high)

FREQUENCY SELECTION(H/W Strap pin setting)

WLAN_ACT:	ANTSEL_N:
40MHz	0 (pull low)
	1 (pull high)



DRAWN

DATE

MODEL:

M855E

MT5921A BGA7*7

CHECKED

TIME

TITLE:

VERSION