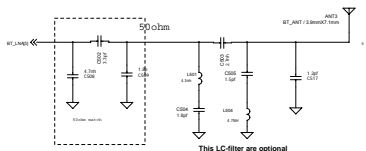
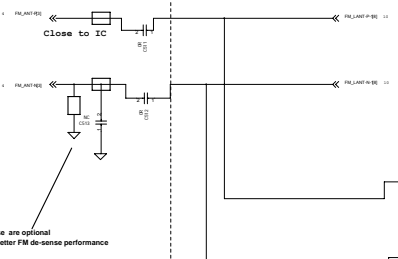


Close to IC

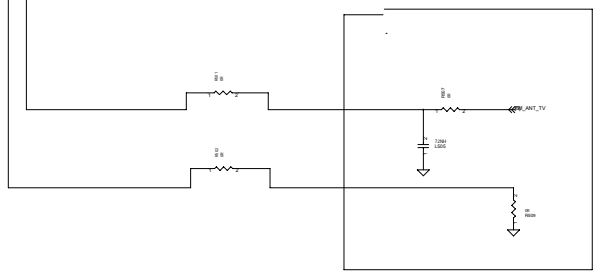
These two cap are optional for better BT performance (Matching)

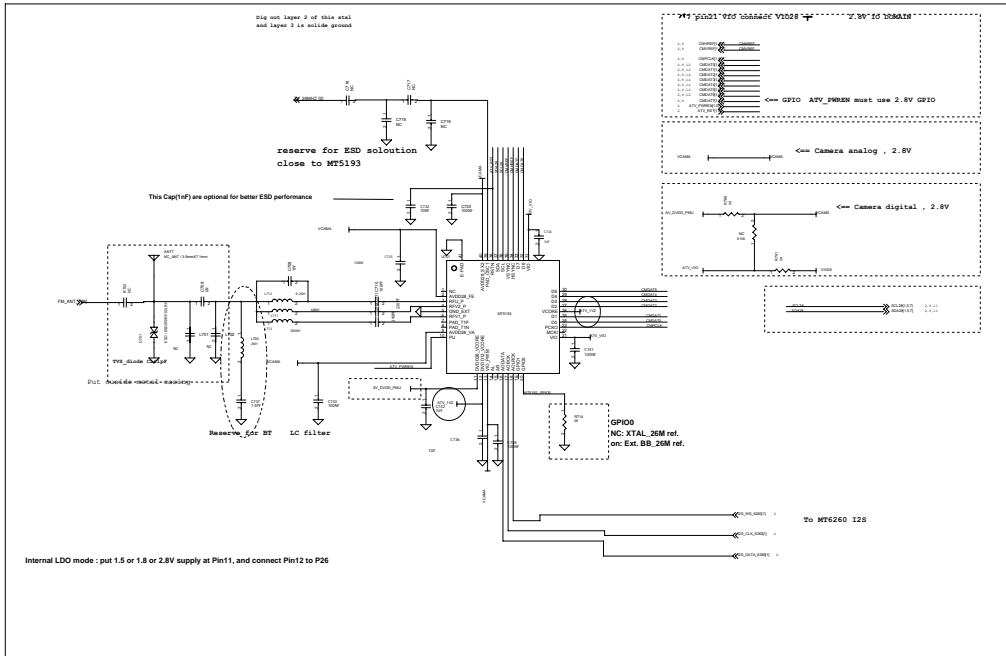


This LC-filter are optional for better BT performance (For SIG spec)



These are optional for better FM de-sense performance



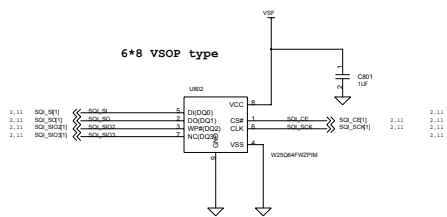


Serial Flash

Shielding ✚ all sheet

SHOLD : SIO3
SWP : SIO2
SOUT : SQI_SI : DQ0
SIN : SQI_SO : DQ1

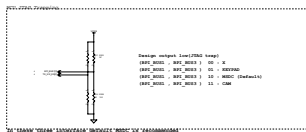
2



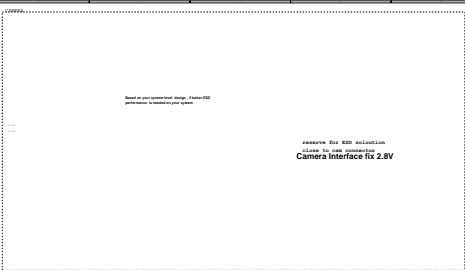
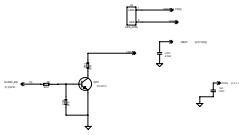
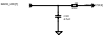
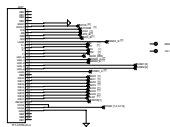
LCM (Parallel Serial co-exist)

In LCM interface we use serial interface (left-hand side column) to control camera (right-hand side column).
 In another word LCM serial and parallel pin layout can be modified as follows:

The serial pins are as follows:



The data pins are as follows:



reserve for RSD solution
 Connect to the following
Camera Interface fix 2.8V



