

Customers: MengBo

Project name: 5516A

RF engineer: XuLong

Telephone: 15915343126

Report edition: 20230914

5516A project appearance

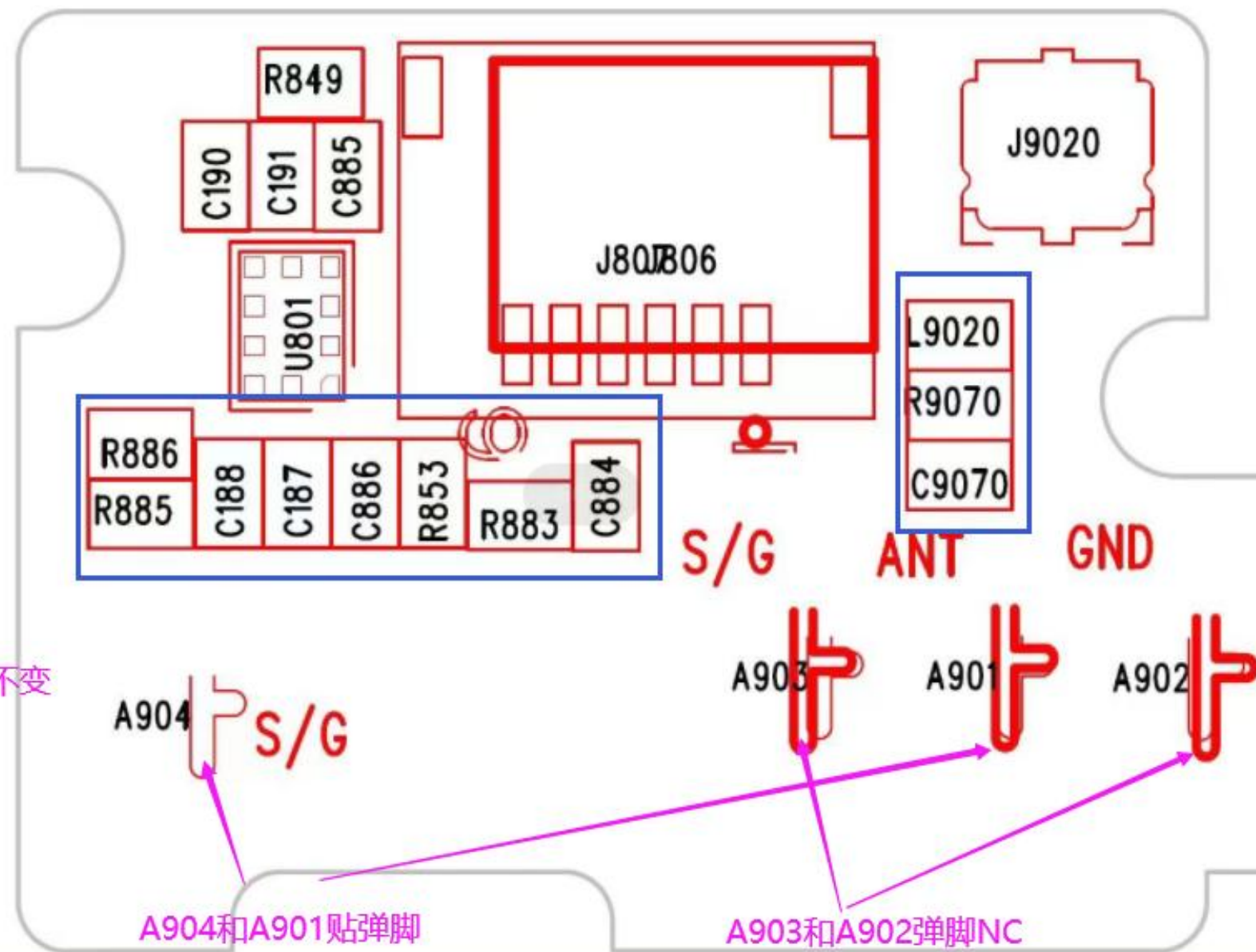


5516A project match

5516匹配

C9070	22NH
R9070	0欧姆
L9020	NC
R886	NC
R885	0欧姆
R883	NC
C884	NC
C886	0欧姆
R853	4.7NH
C187	22NH
C188	27NH

其它保持小板原有不变



● A Brief Introduction to debugging the project

Plate type	The whole machine						
Antenna Overview	The main antenna	Frequency band		Antenna status	Antenna form	Design area	Match the changes
		2G	G2/3/5/8/W2/4/5	Gold-plated FPC	PIFA	The bottom of the phone	YES
		3G					
		4G	2/4/5/12/17/66/71/TD D41				
		5G	N/A				
	Other antennas	BT/WIFI	2.4G				
		GPS	1575.42MHZ	No			
		Diversity	N/A	Gold-plated FPC	PIFA	Top of the phone	No
	Prototype status	5516A Debugging machine		Environmental treatment			

5516A Switching frequency division

5516AS witching frequency division RF switching frequency division is as follows:			
Frequency band	Switch channel	Match	Notes
GSM2/3/8/W2/4/FDD2/4/66/TDD41	RF1 (C886)	0 Ω	
GSM5/W5/FDD5 (850MHZ)	RF2 (R853)	4.7NH	
FDD12/17	RF3 (C187)	22NH	
B71	RF4 (C188)	27NH	
	R885	0 Ω	
	R883/R886	NC	

ANWEI ANT TRP&TIS parameter Summary of 5516A

BAND	GSM900			DCS1800		
CHANNEL	1	62	124	512	698	885
TRP (dBm)	26.35	26.24	26.12	24.56	25.13	25.26
TIS (dBm)			-101.3			-103.2
BAND	GSM850			PCS1900		
CHANNEL	128	190	251	512	661	810
TRP (dBm)	25.64	26.27	26.31	25.24	25.32	25.14
TIS (dBm)			-101.2			-102.6
BAND	WCDMA850			WCDMA1700		
CHANNEL	4132	4183	4233	1312	1413	1513
TRP (dBm)	16.51	16.49	16.38	17.54	17.42	17.51
TIS (dBm)			-101.6			-102.7
BAND	WCDMA1900			WCDMA900		
CHANNEL	9262	9400	9538	2937	3013	3088
TRP (dBm)	17.41	17.52	17.48			
TIS (dBm)			-102.6			

ANWEI ANT TRP&TIS parameter Summary of 5516A

BAND	FDD-2			FDD-4		
CHANNEL	18650	18900	19150	20000	20175	20350
TRP (dBm)	17.23	17.34	17.46	17.23	17.36	17.41
TIS (dBm)			-90.38			-90.51
BAND	FDD-5			FDD-12		
CHANNEL	20450	20525	20600	23060	23095	23130
TRP (dBm)	16.53	16.68	16.78	16.12	16.23	16.27
TIS (dBm)			-90.12			-90.21
BAND	FDD-17			FDD-66		
CHANNEL	23780	23790	23800	132022	132322	132622
TRP (dBm)	16.21	16.39	16.41	17.26	17.41	17.38
TIS (dBm)			-90.32			-91.13
BAND	FDD-71			TDD-41		
CHANNEL	133172	133297	133422	40340	40620	41140
TRP (dBm)	15.12	15.21	15.34	17.28	17.35	17.46
TIS (dBm)			-89.56			-88.45

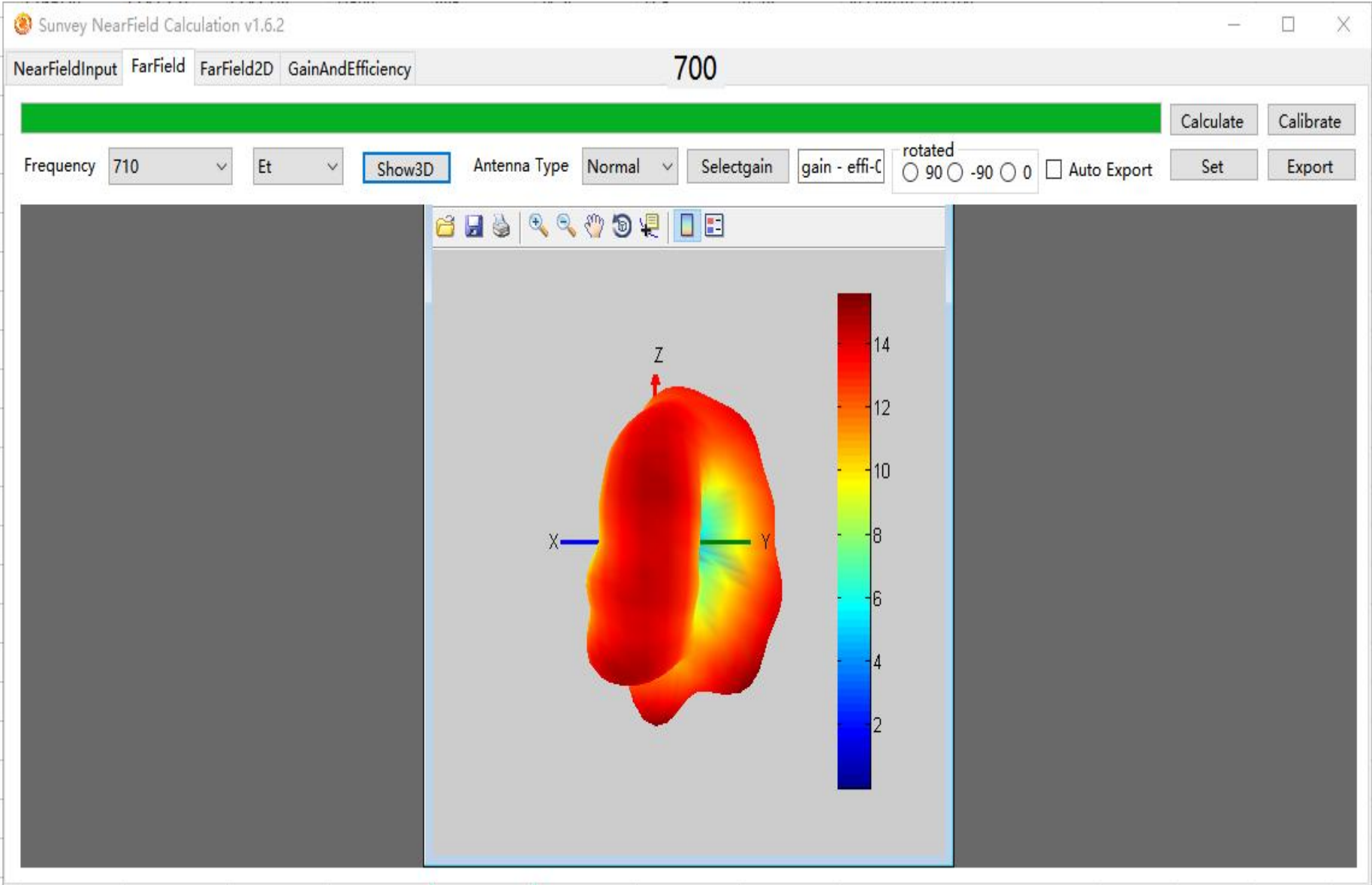
Antenna gain

5516 Antenna Gain

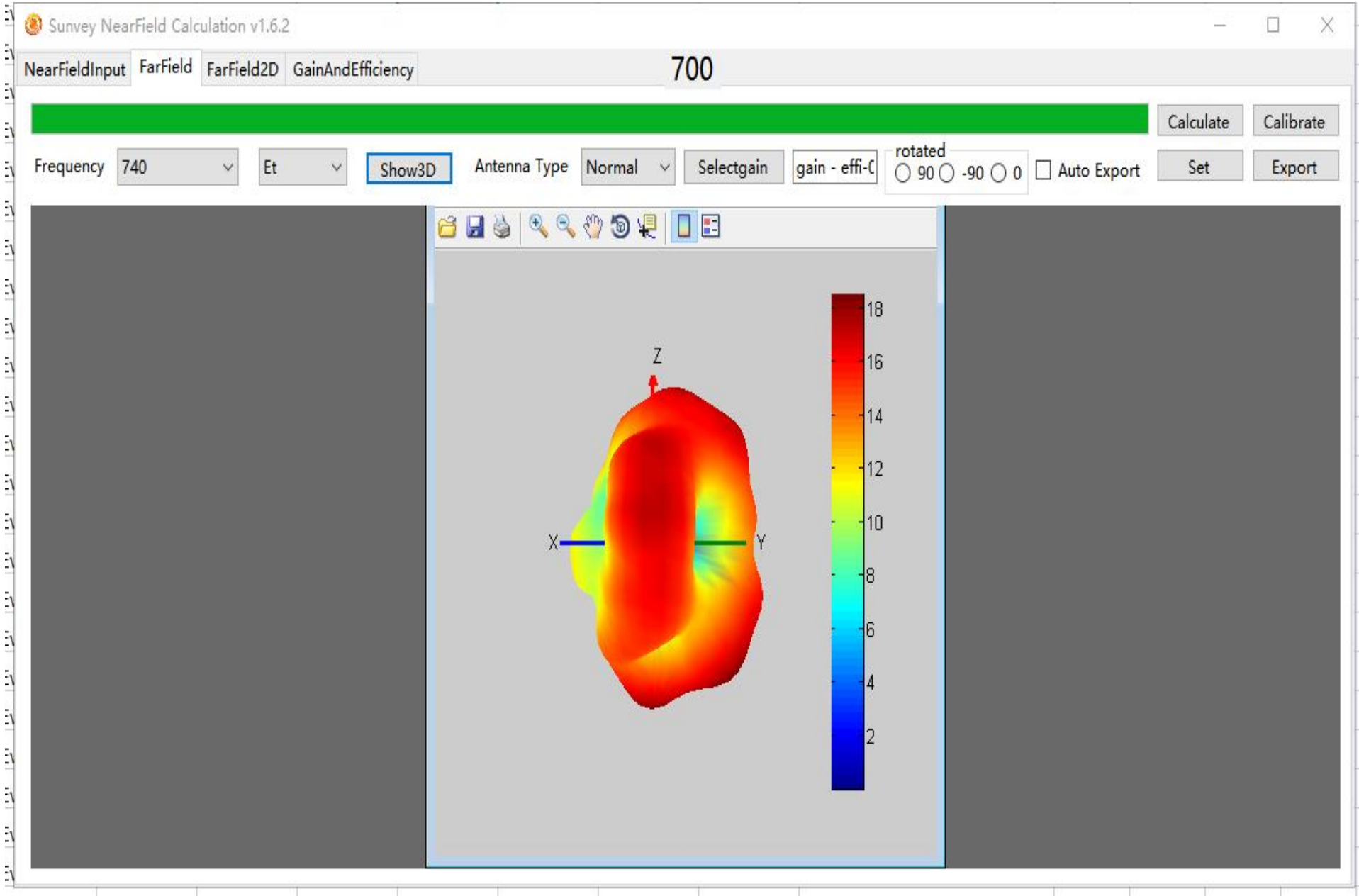
频段Frequency	增益Gain(dB)
GSM850	-0.51
EGSM900	-0.48
DCS1800	-0.32
PCS1900	-0.34
W1700	-0.33
W850	-0.51
W1900	-0.34
FDD	
B2	-0.34
B4	-0.33
B5	-0.51
B12	-0.61
B17	-0.67
B66	-0.34
B71	-0.66
B41	-0.24
WIFI	-0.13
BT	-0.13

以上单位为：dB

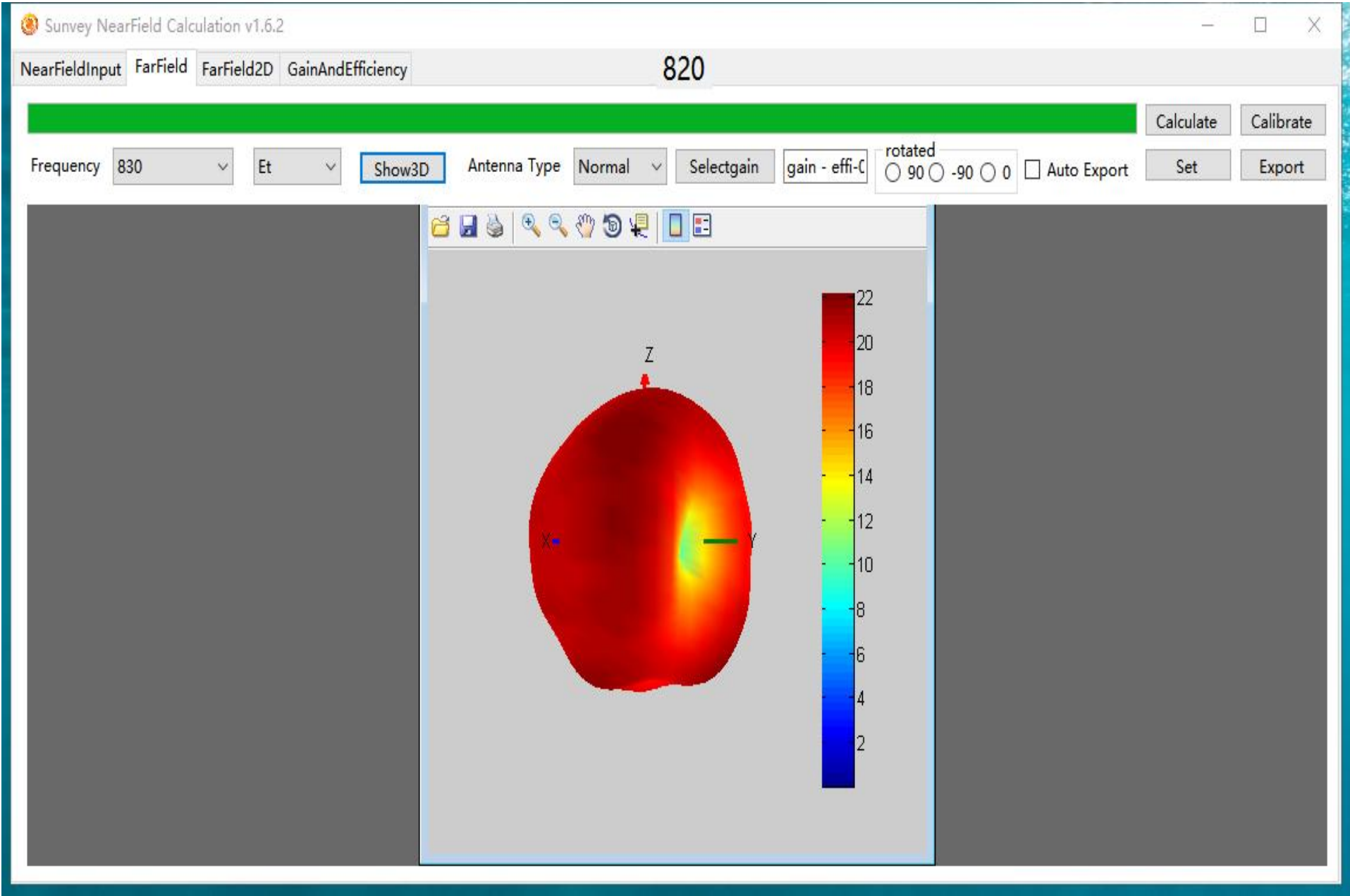
Main antenna apple diagramApple chart



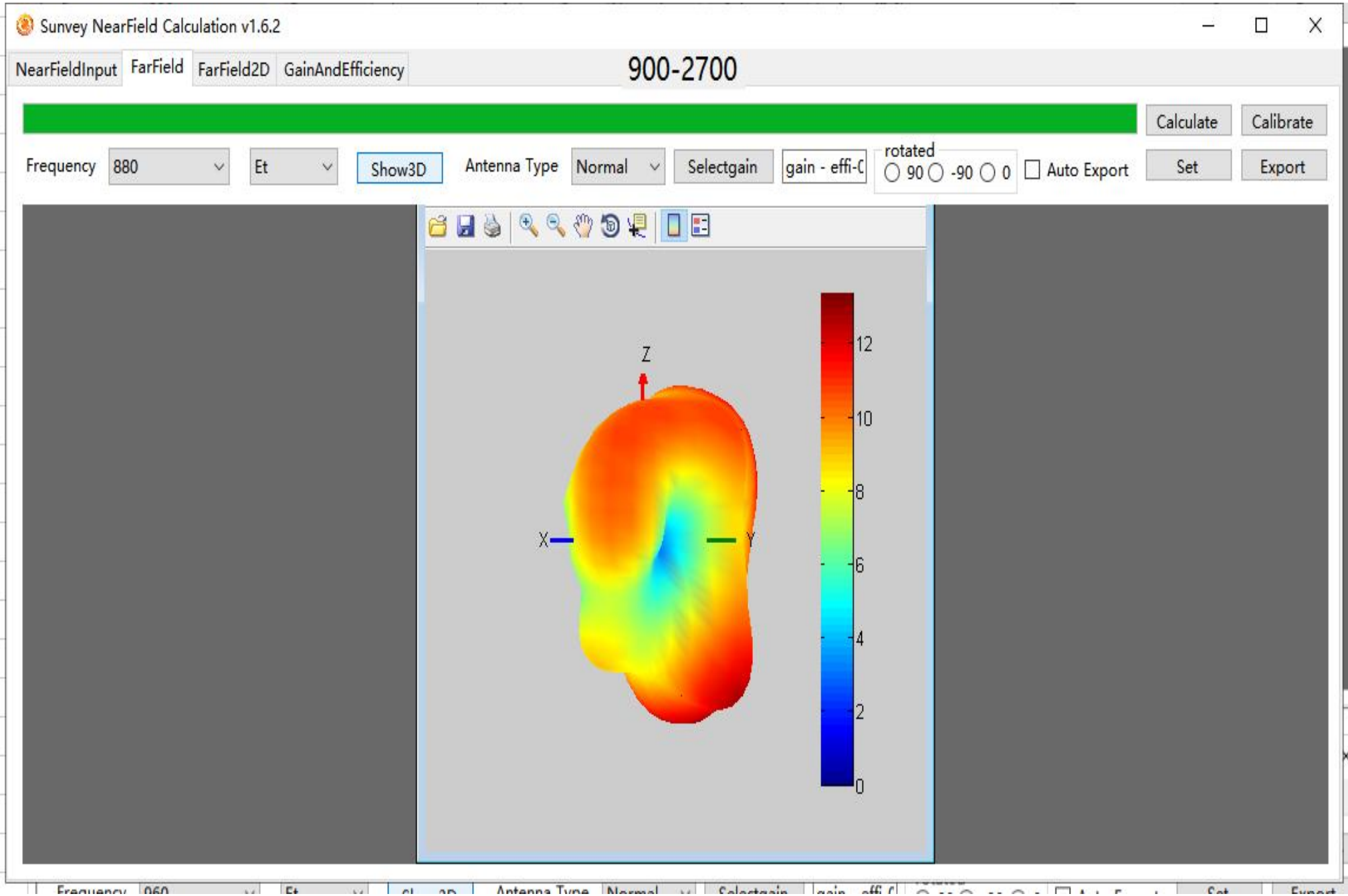
Main antenna apple diagramApple chart



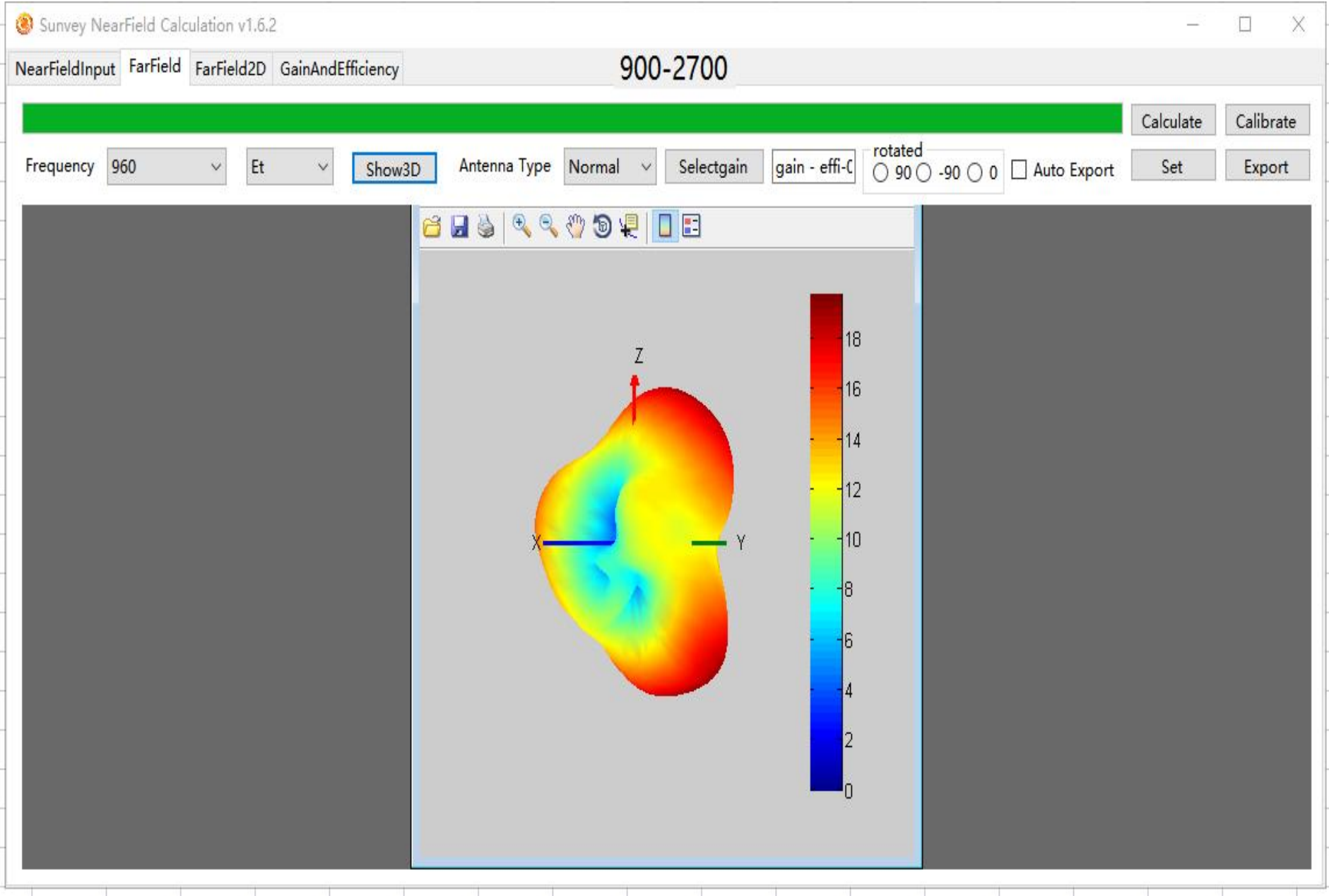
Main antenna apple diagramApple chart



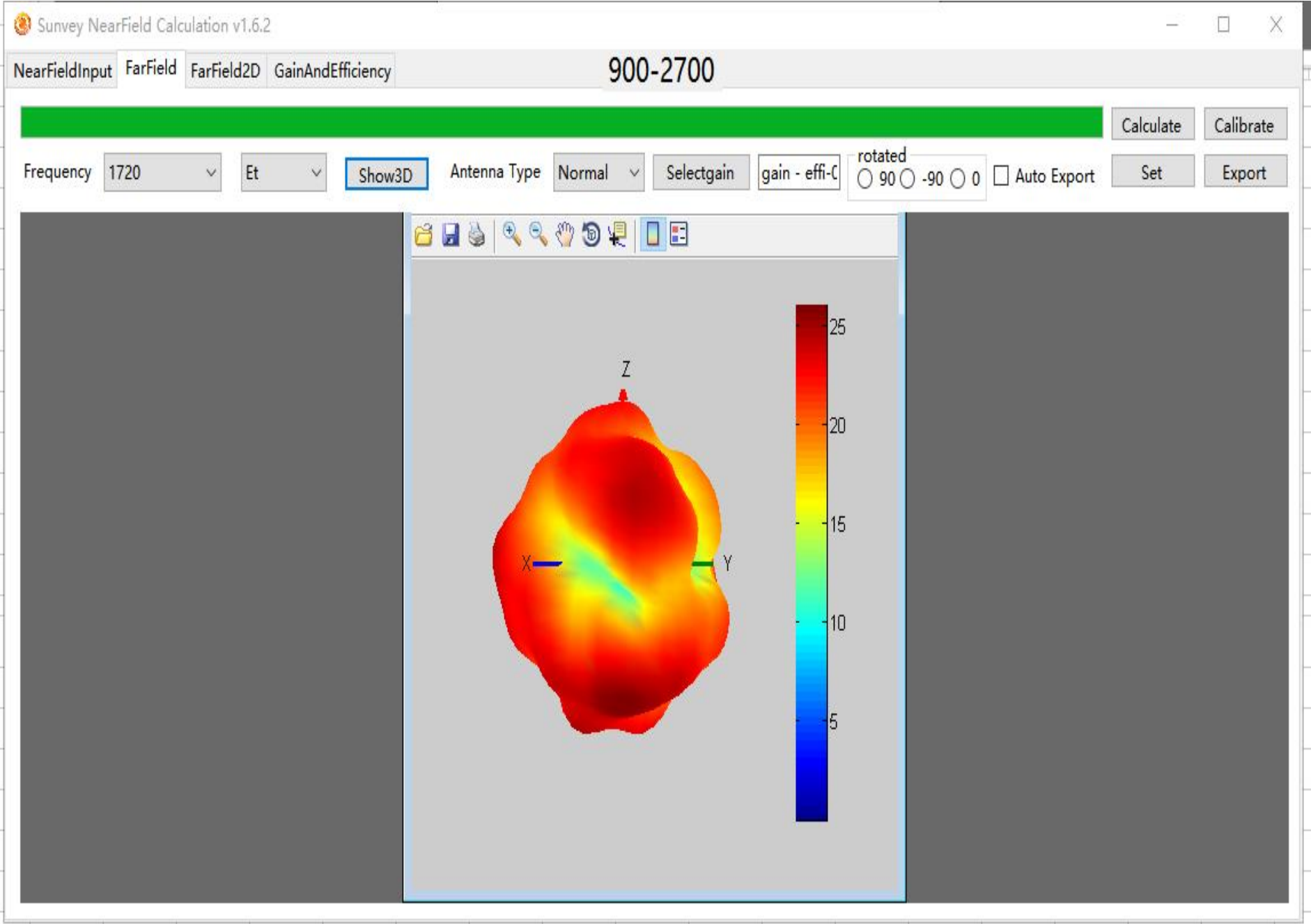
Main antenna apple diagramApple chart



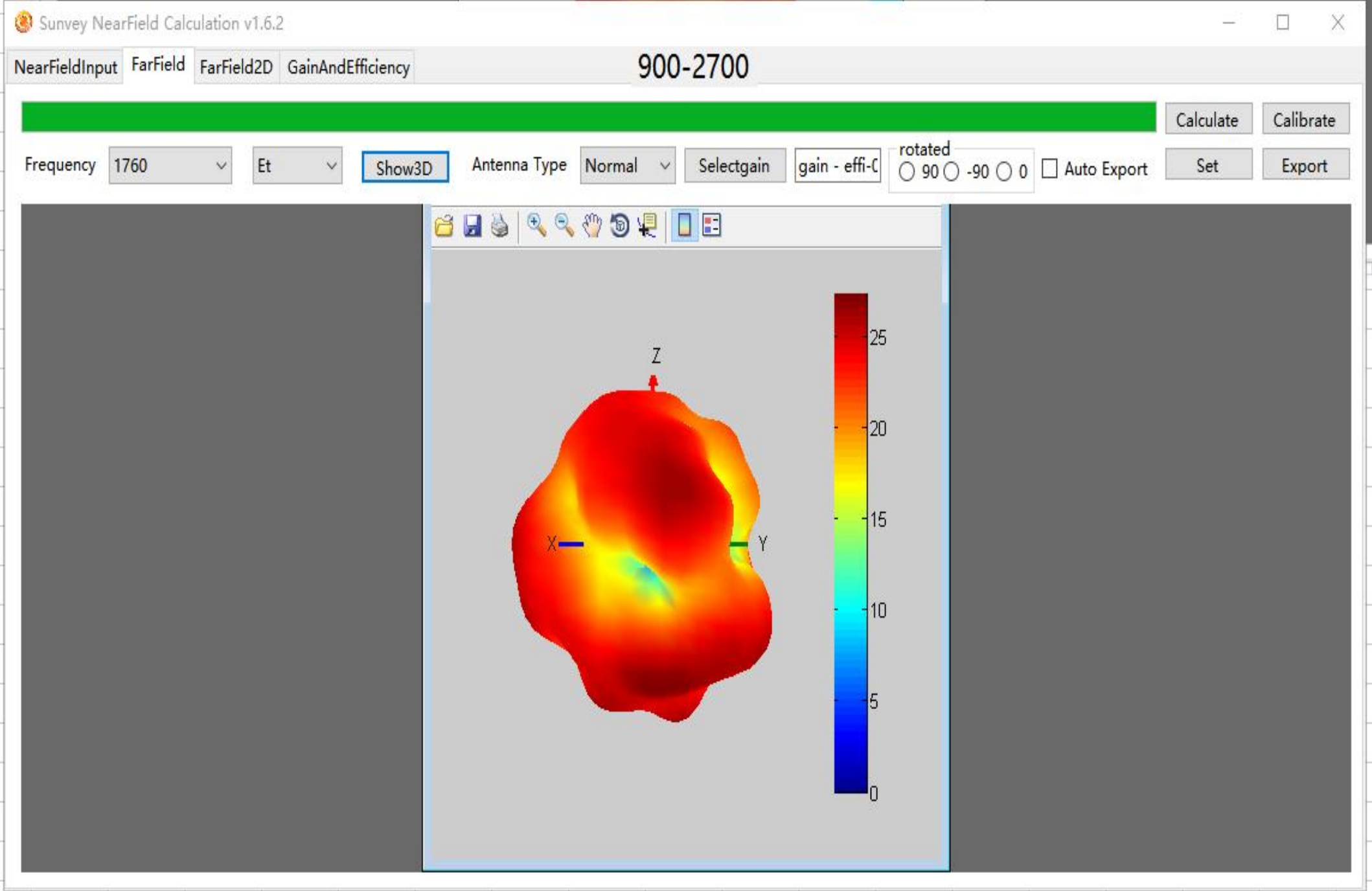
Main antenna apple diagramApple chart



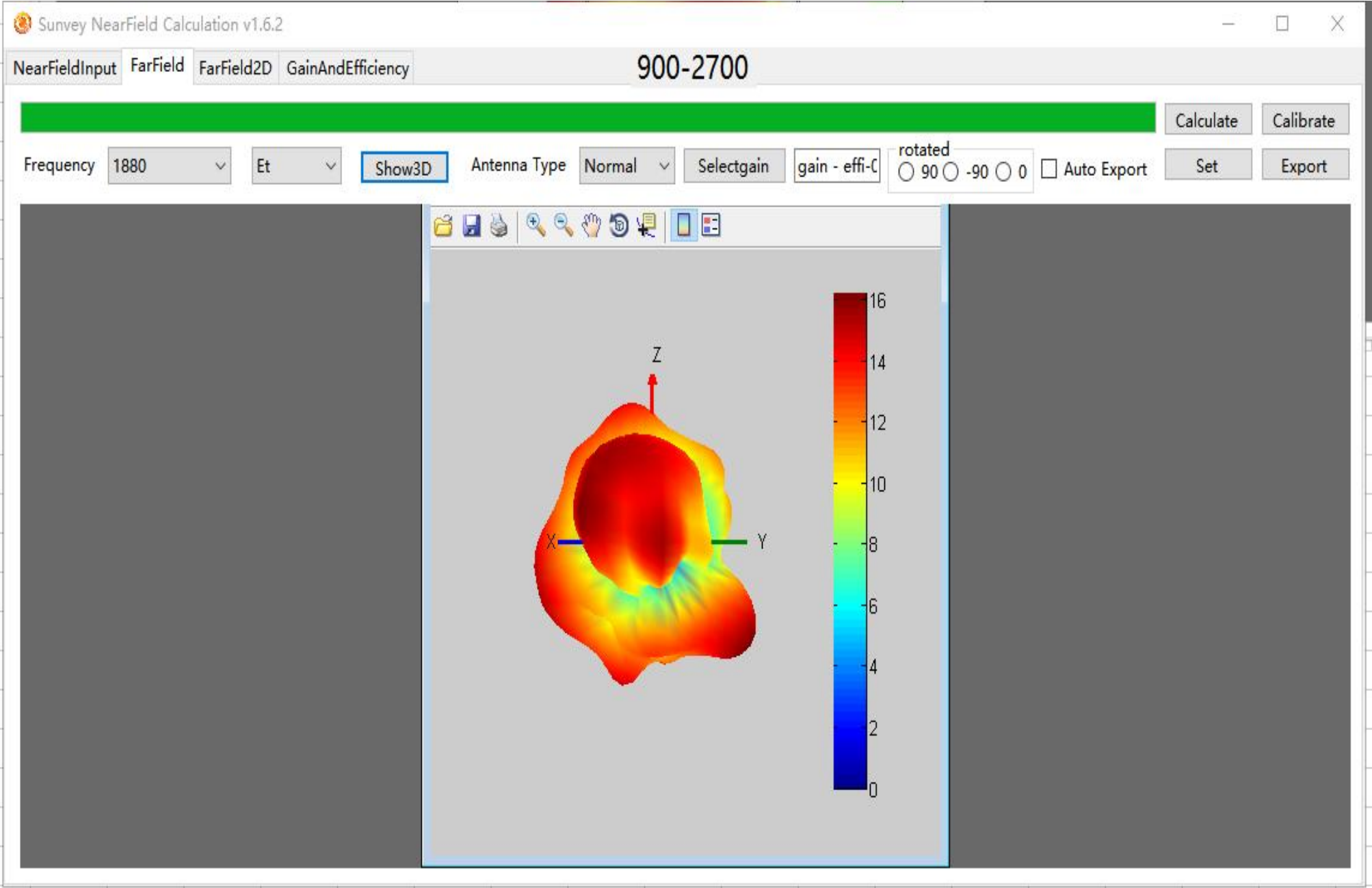
Main antenna apple diagramApple chart



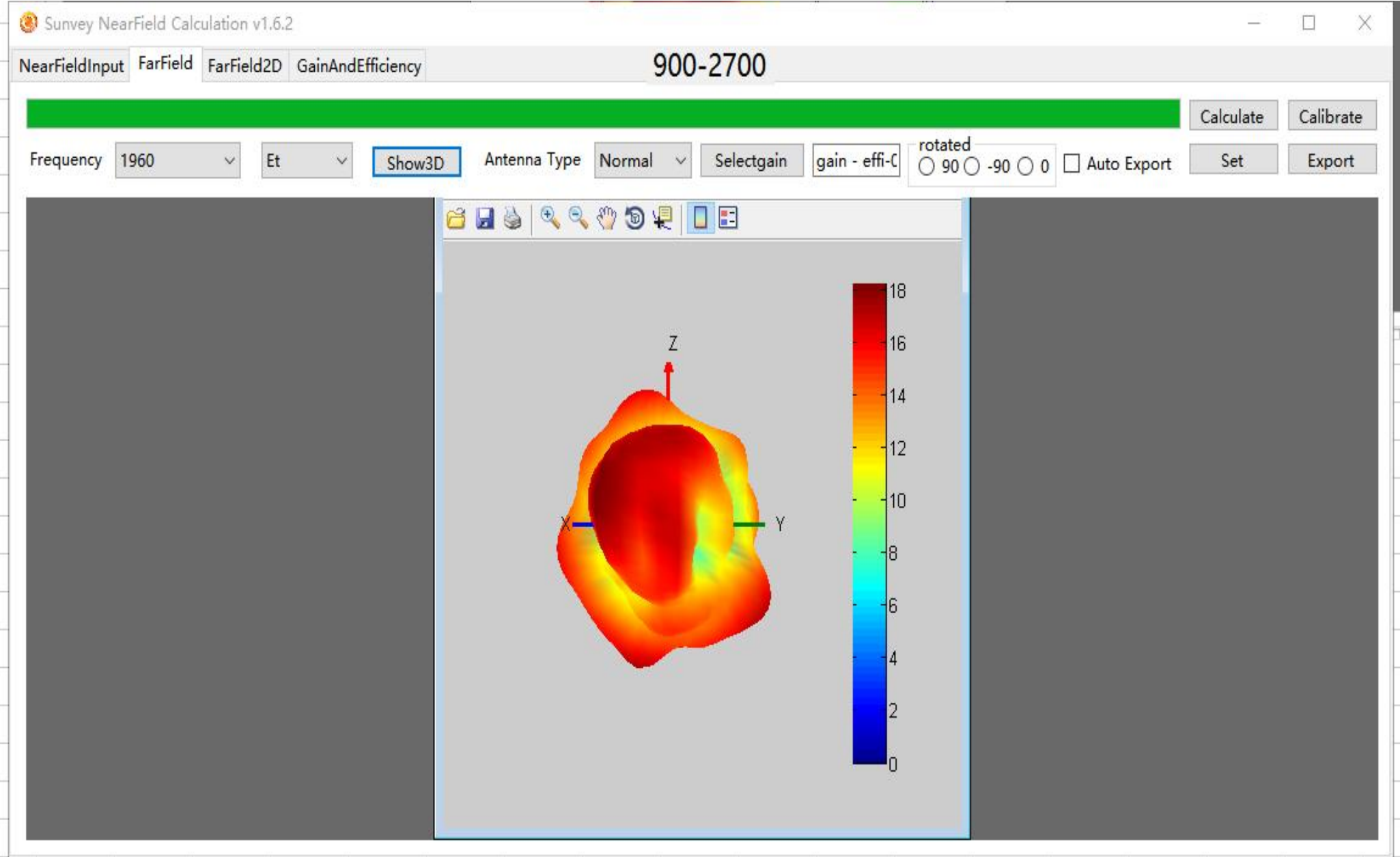
Main antenna apple diagramApple chart



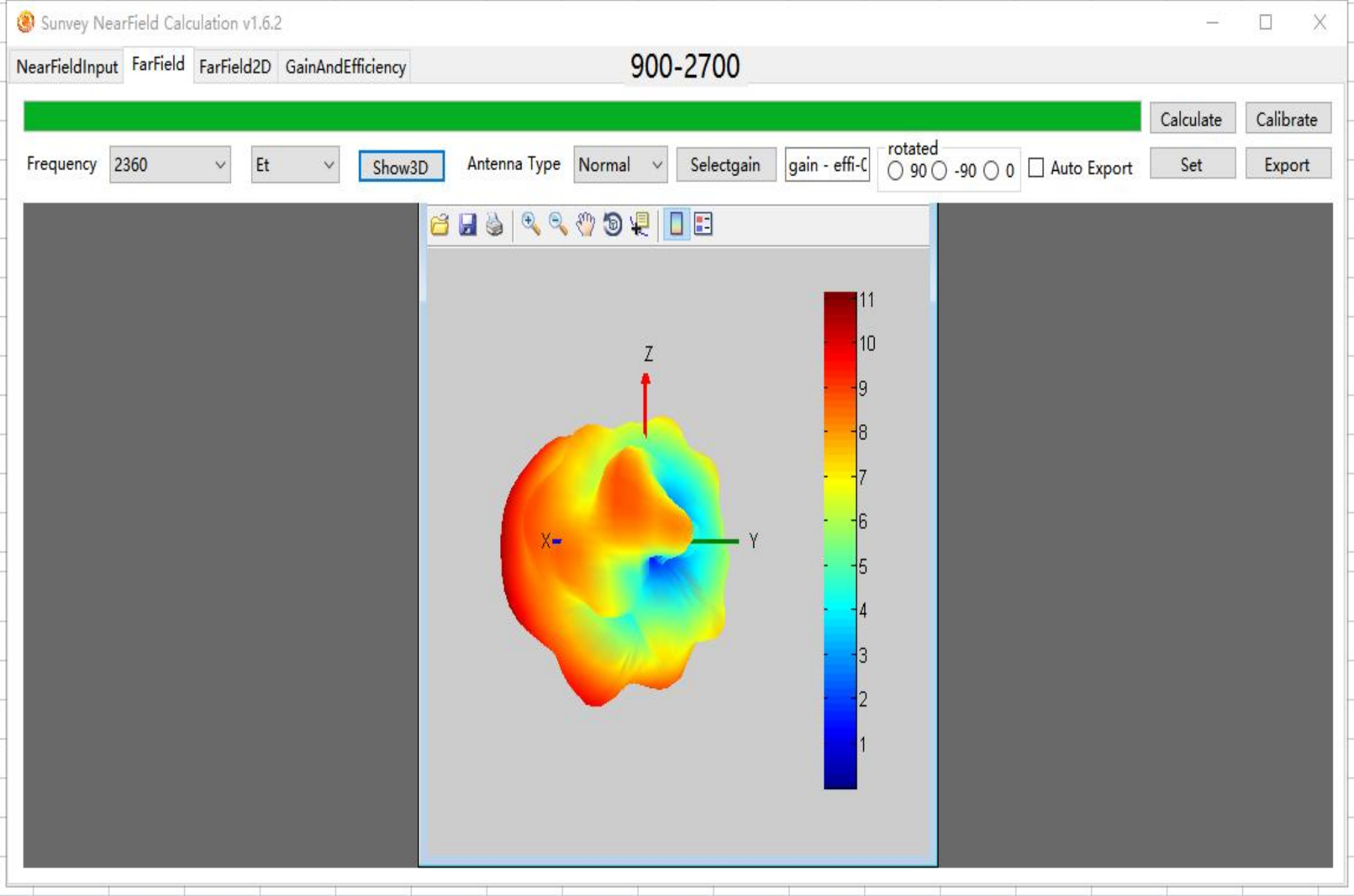
Main antenna apple diagramApple chart



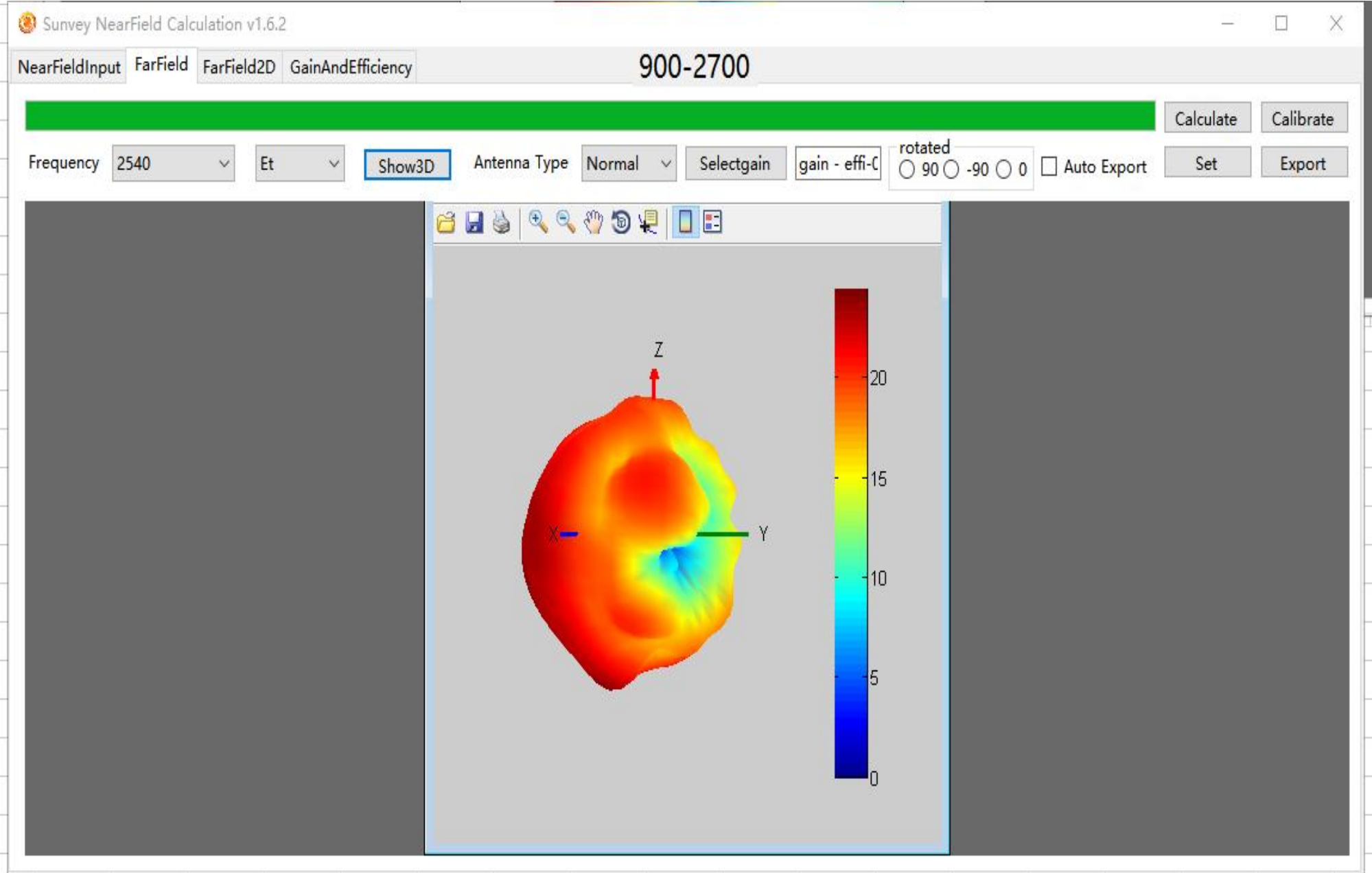
Main antenna apple diagramApple chart



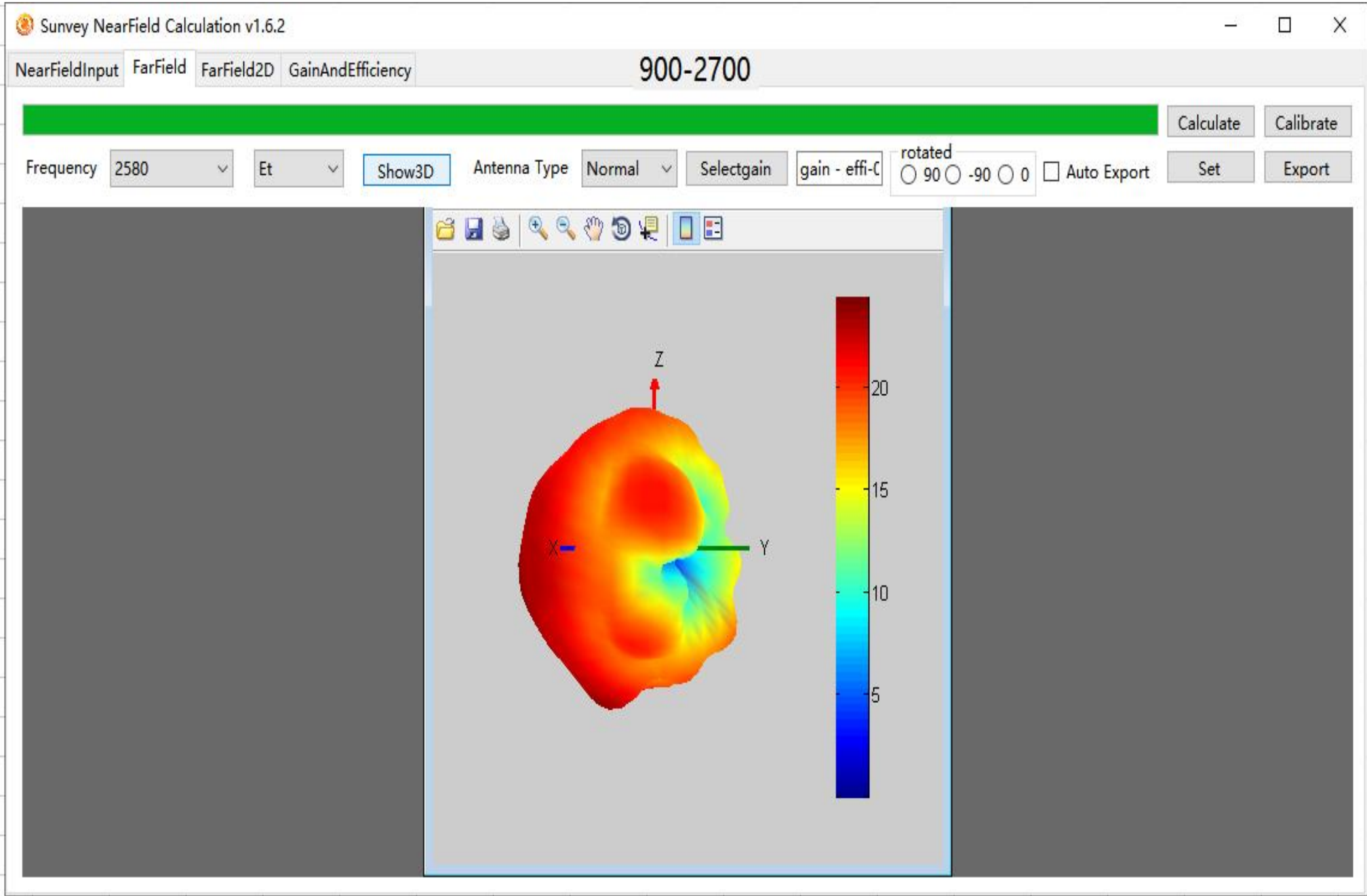
Main antenna apple diagramApple chart



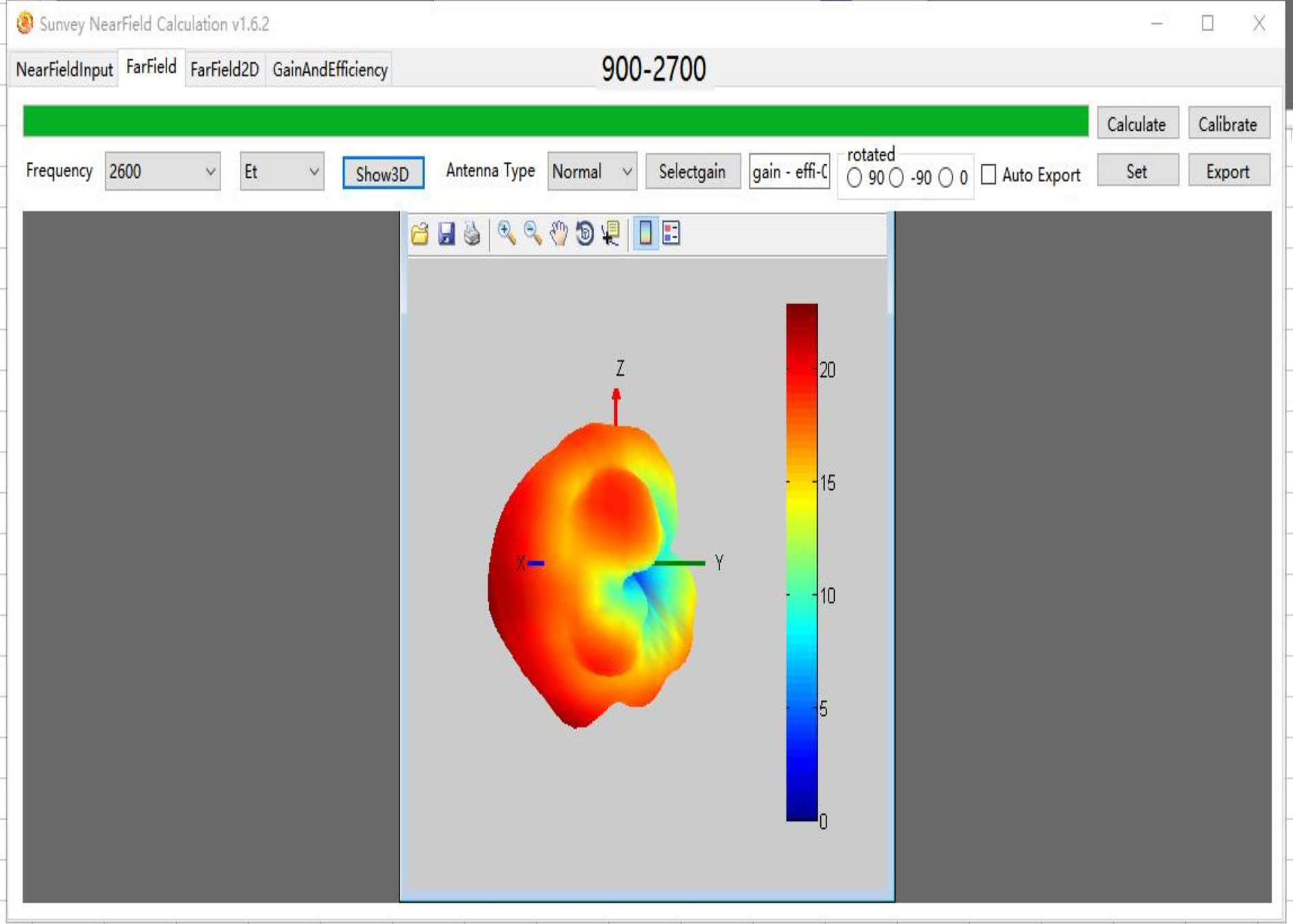
Main antenna apple diagramApple chart



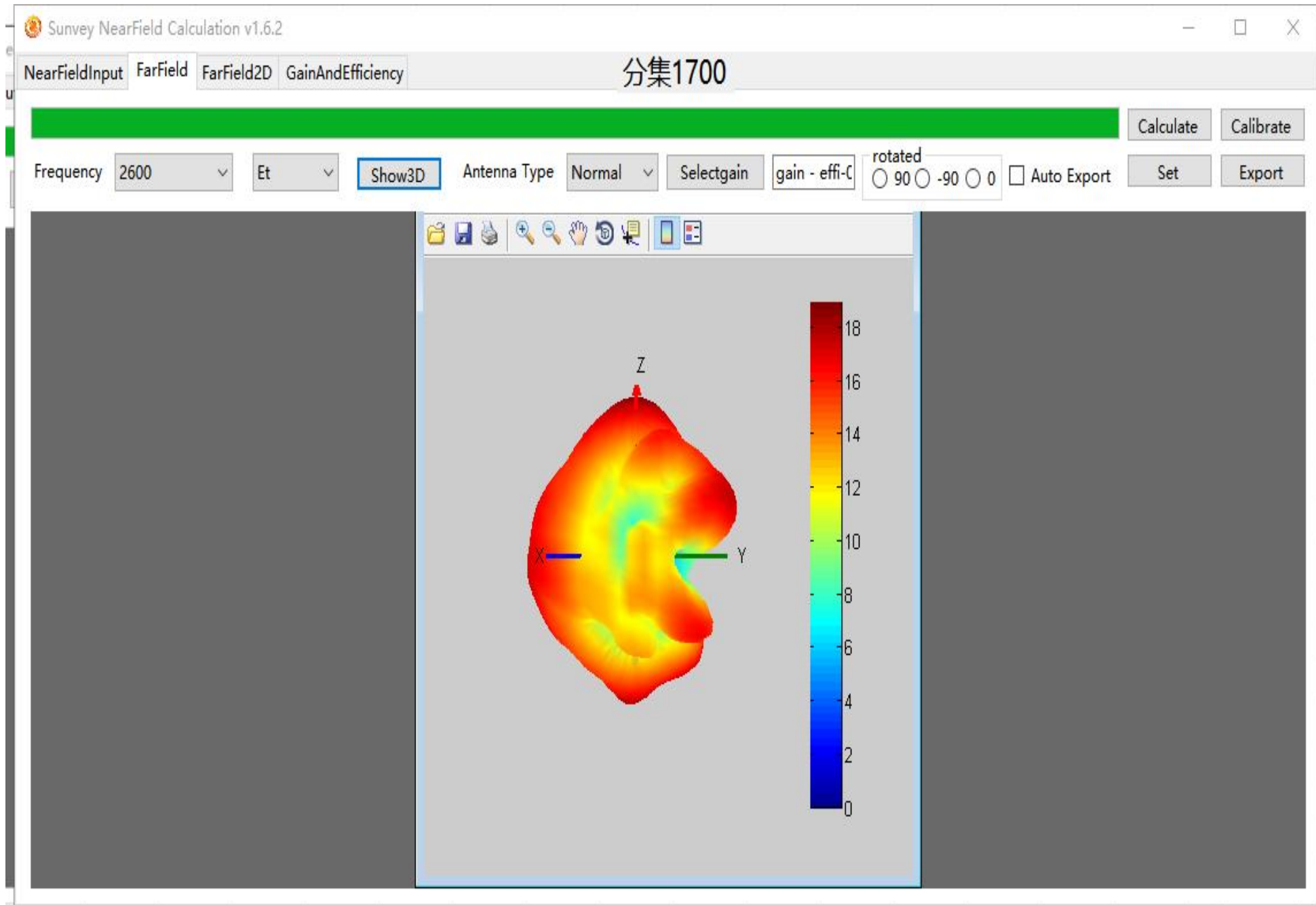
Main antenna apple diagramApple chart



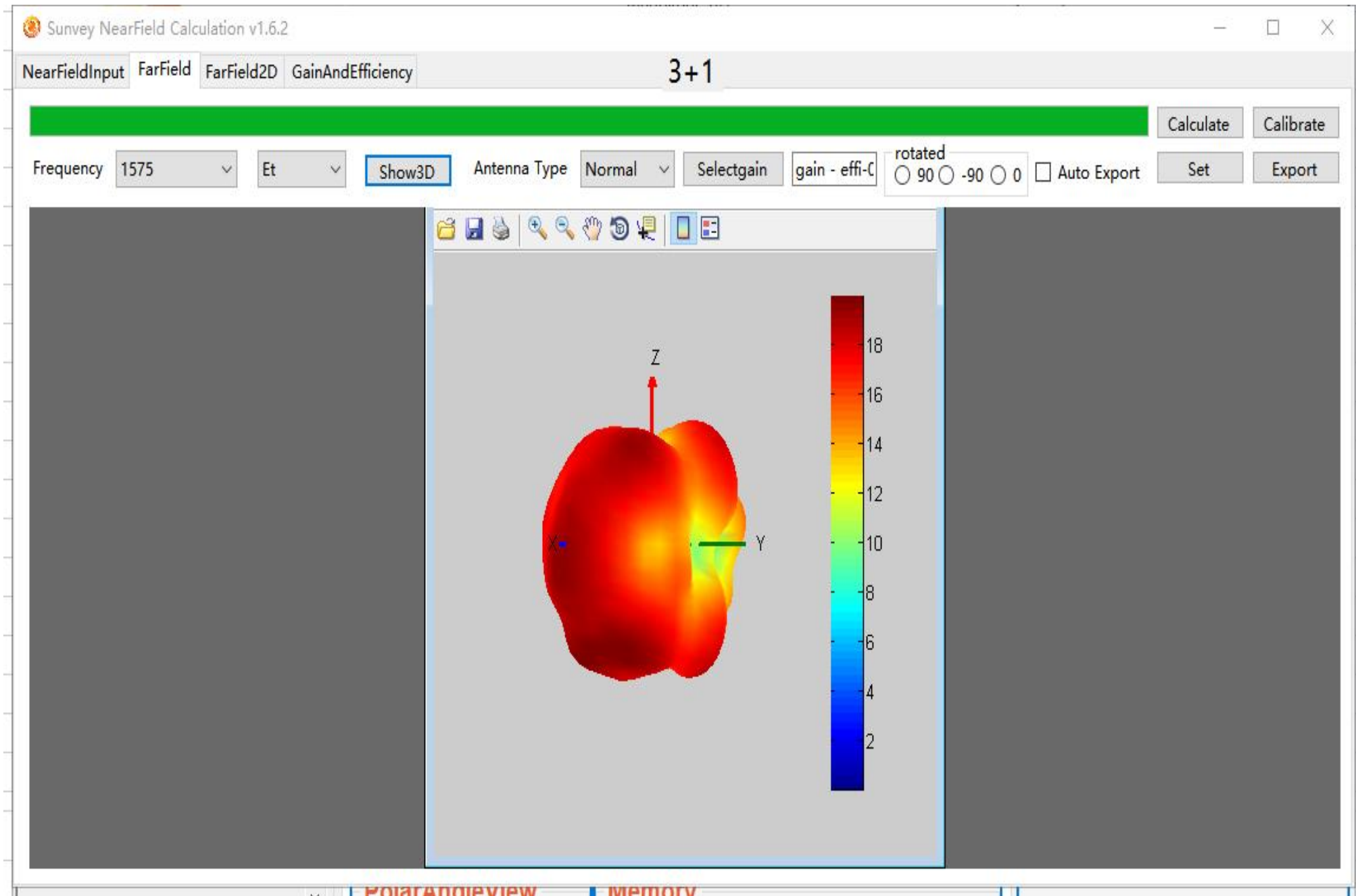
Main antenna apple diagramApple chart



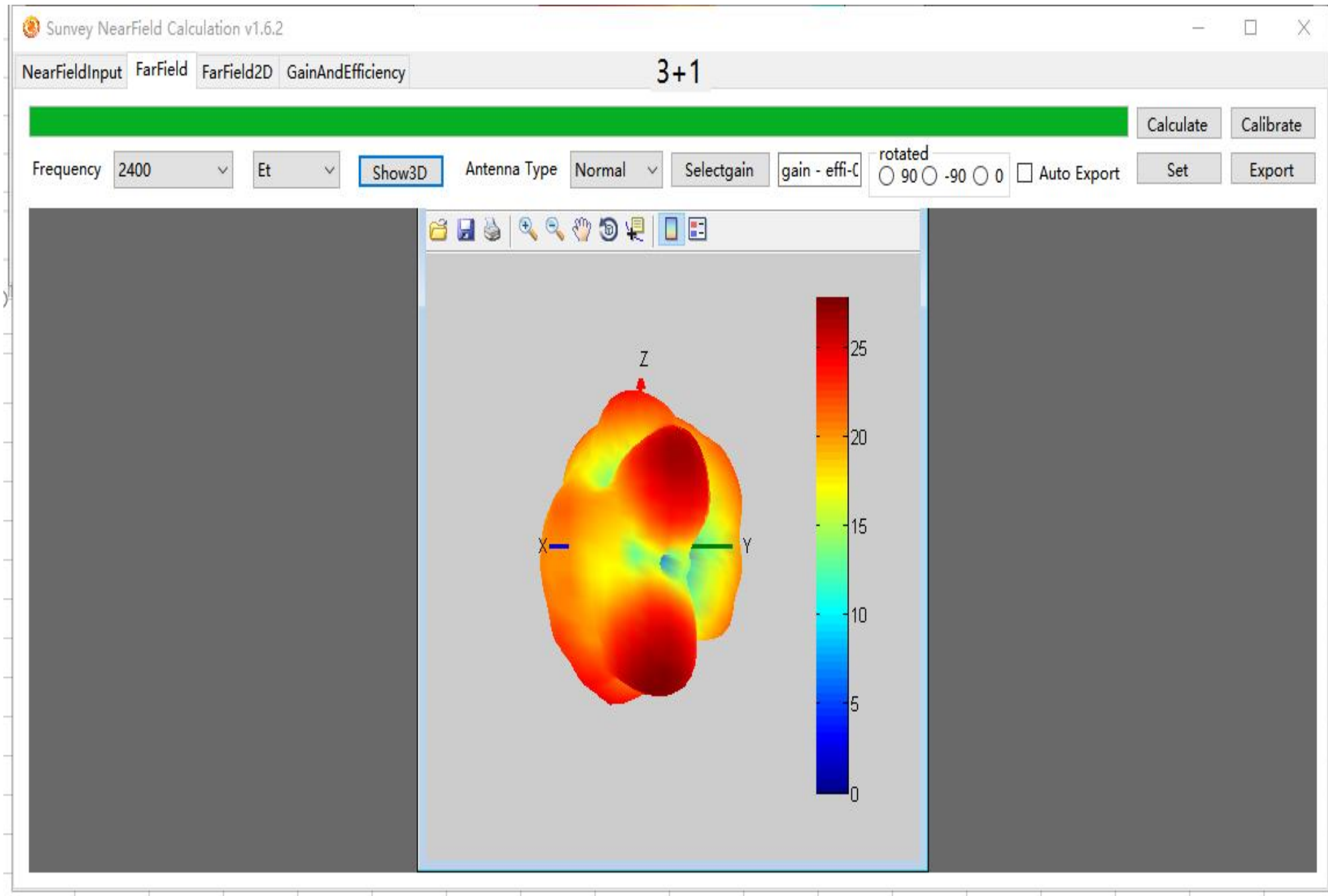
Diversity Antenna Apple diagram



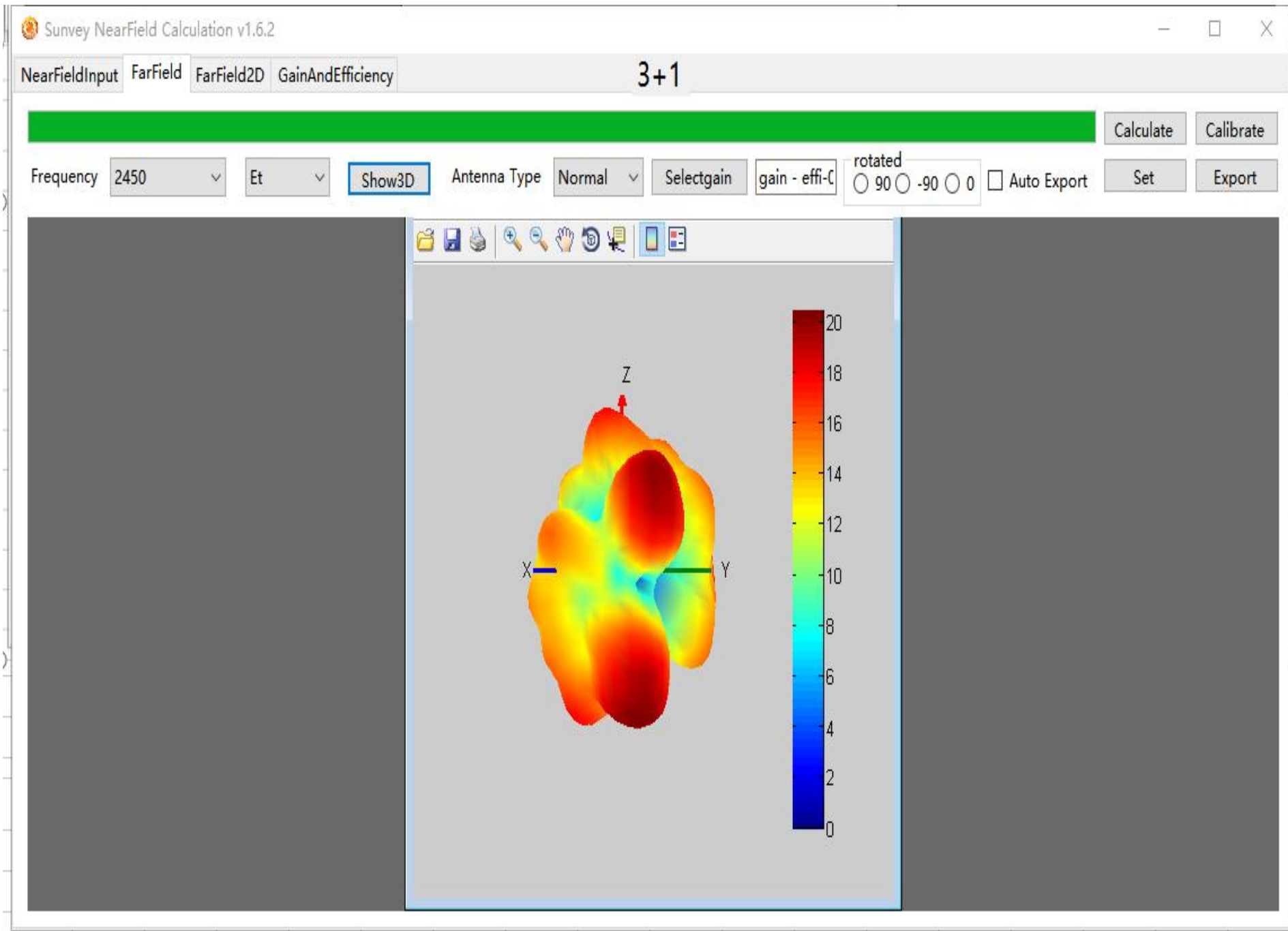
GWB antenna apple diagram



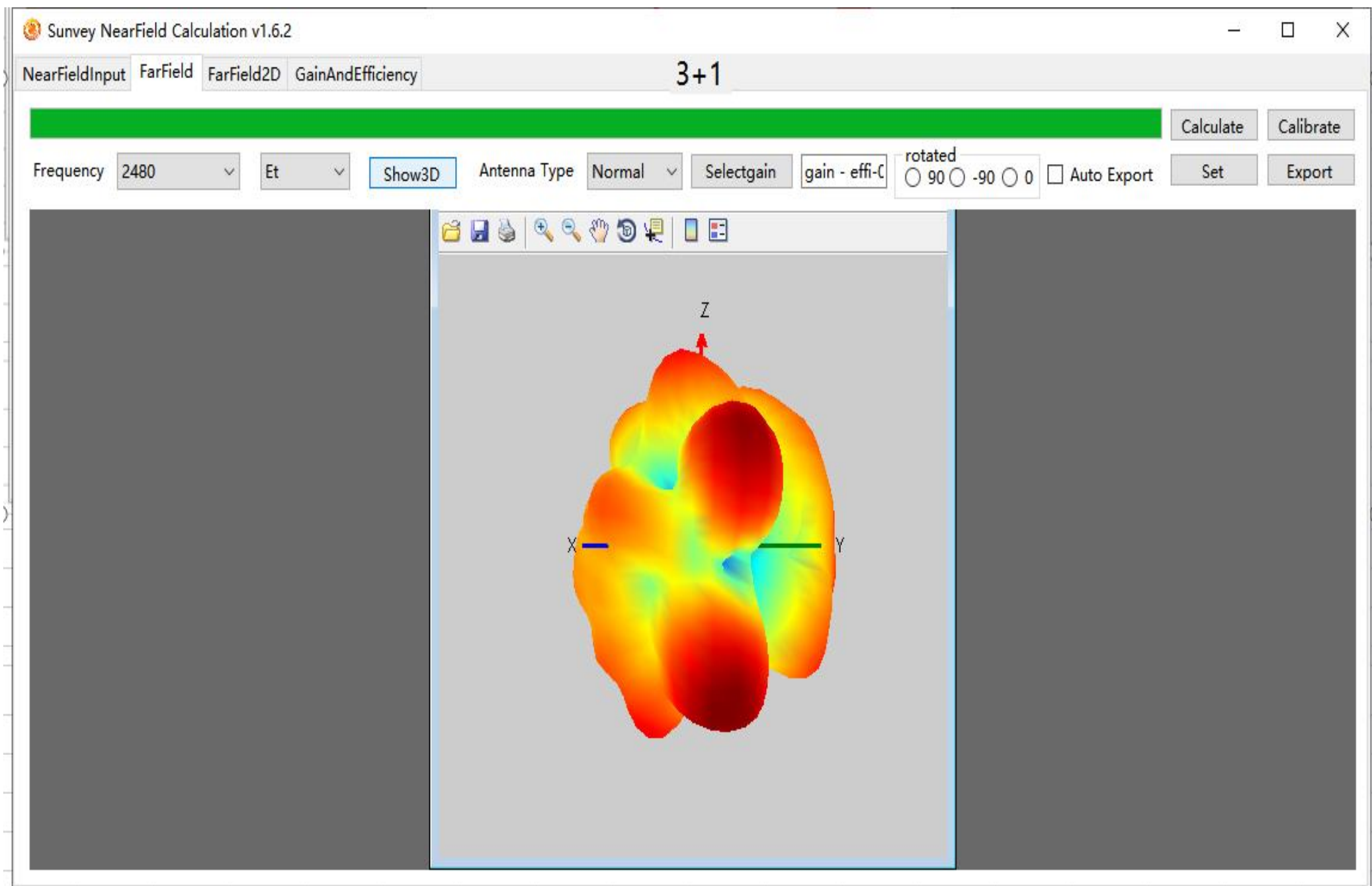
GWB antenna apple diagram



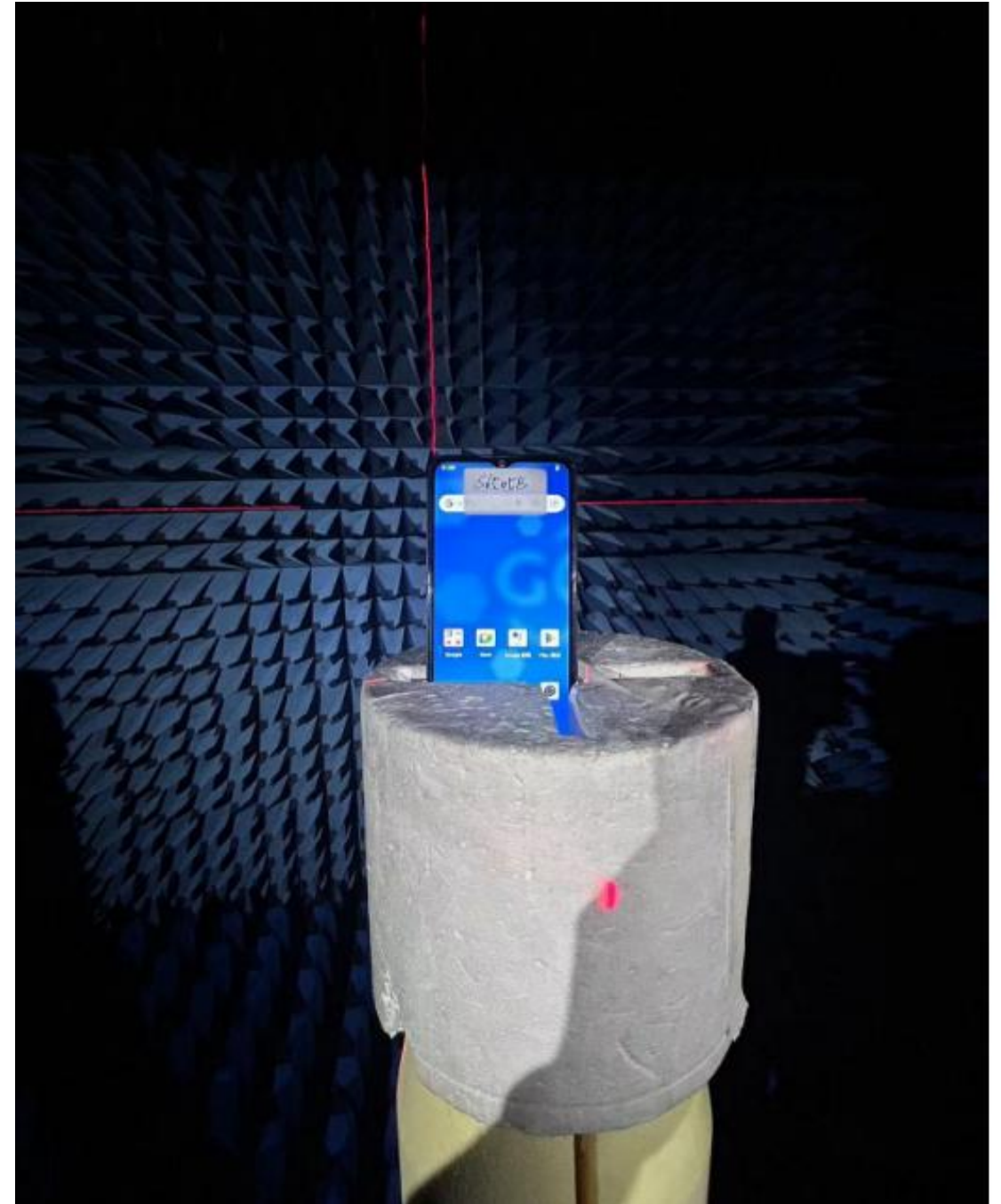
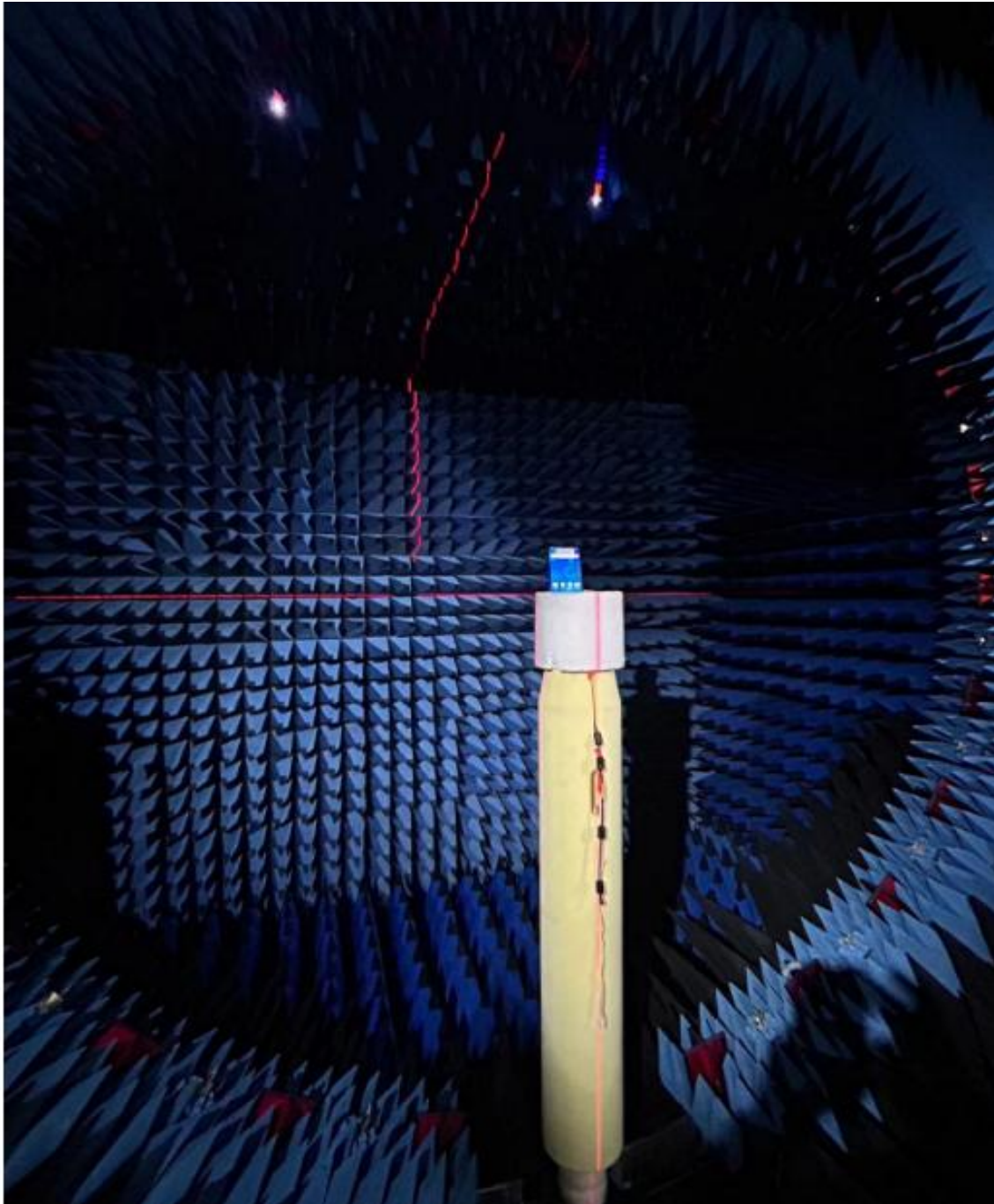
GWB antenna apple diagram



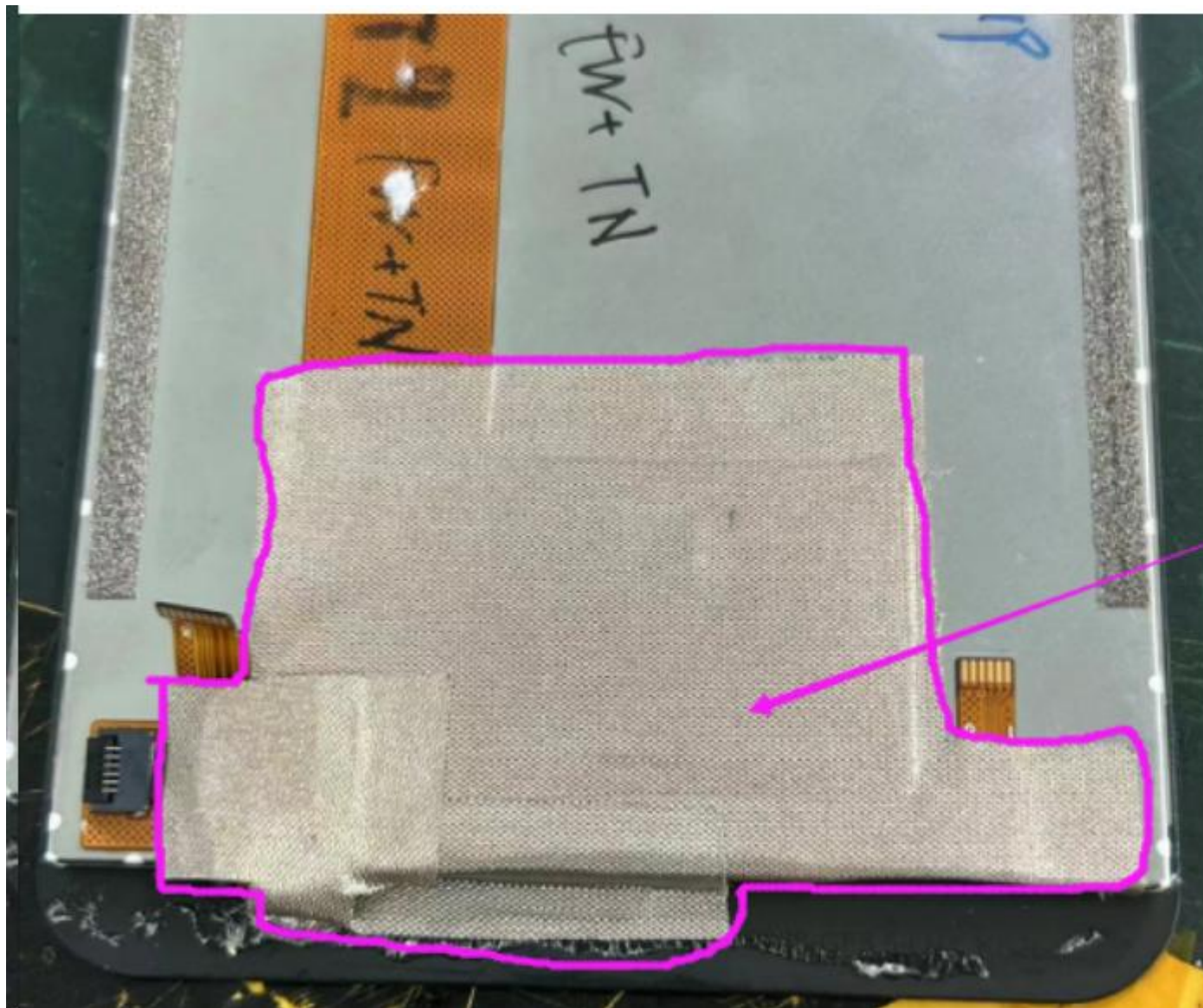
GWB antenna apple diagram



Device Test scenario

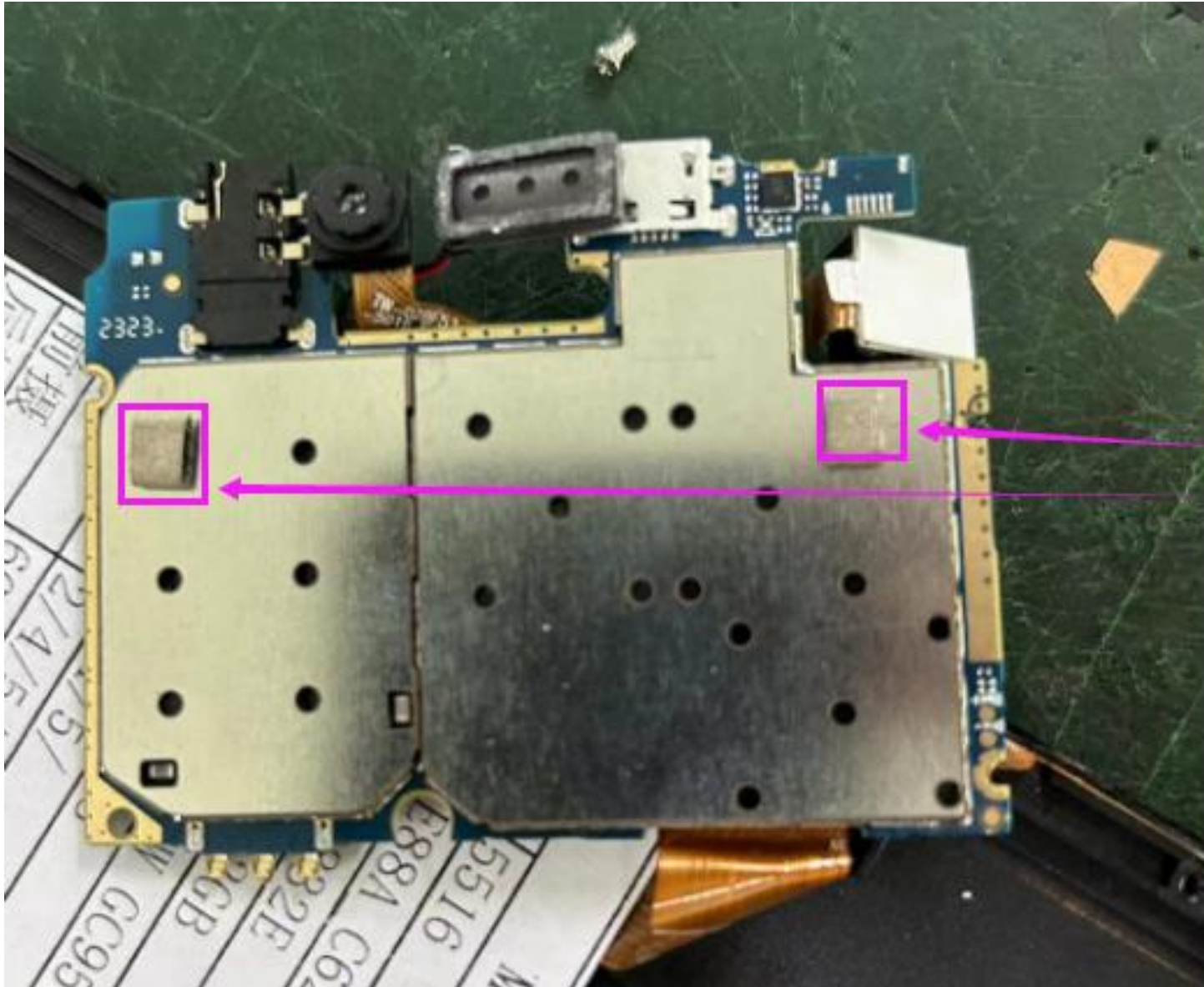


Environmental treatment



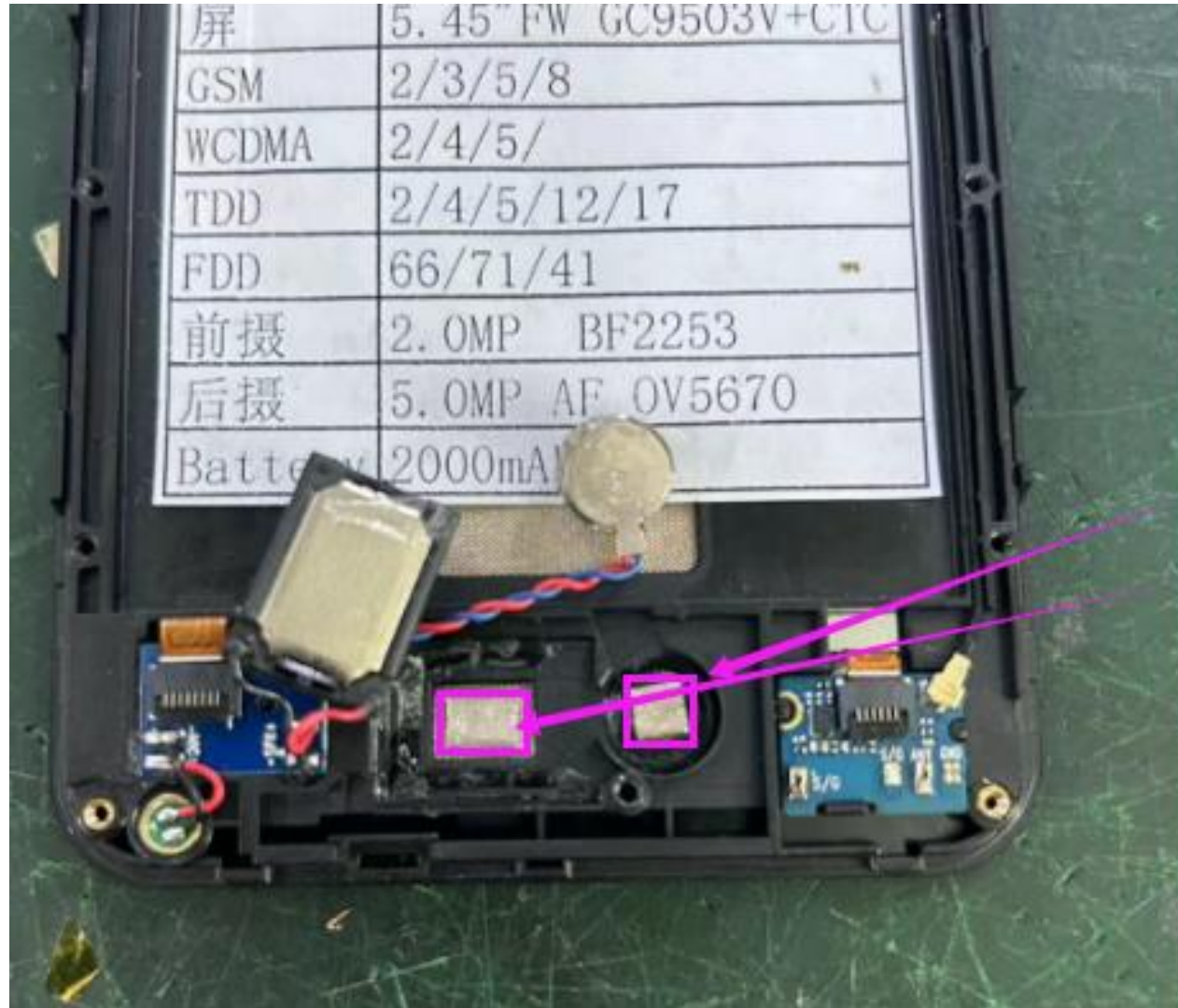
把屏FPC用导电布
按着图示方式盖
住，防止FPC对天
线的干扰。

Environmental treatment



主板屏蔽罩一定要用高导电海棉与屏接地。

Environmental treatment



喇叭和马达用
导电海棉接地

WIFI/GPS

