

Feature

- ※ High gain
- ※ Omani-directional
- ※ Wide bandwidth

Application

- ※GSM850/GSM900/DCS1800/1900
WCDMA /1900/1700/900/850
FDD B2/3/4/5/7/12/28AB/66 TDD B38
communication applications

- ※Antenna manufacturer
Sunnyway Technology (China) Co., Ltd

Shanghai R&D Center :

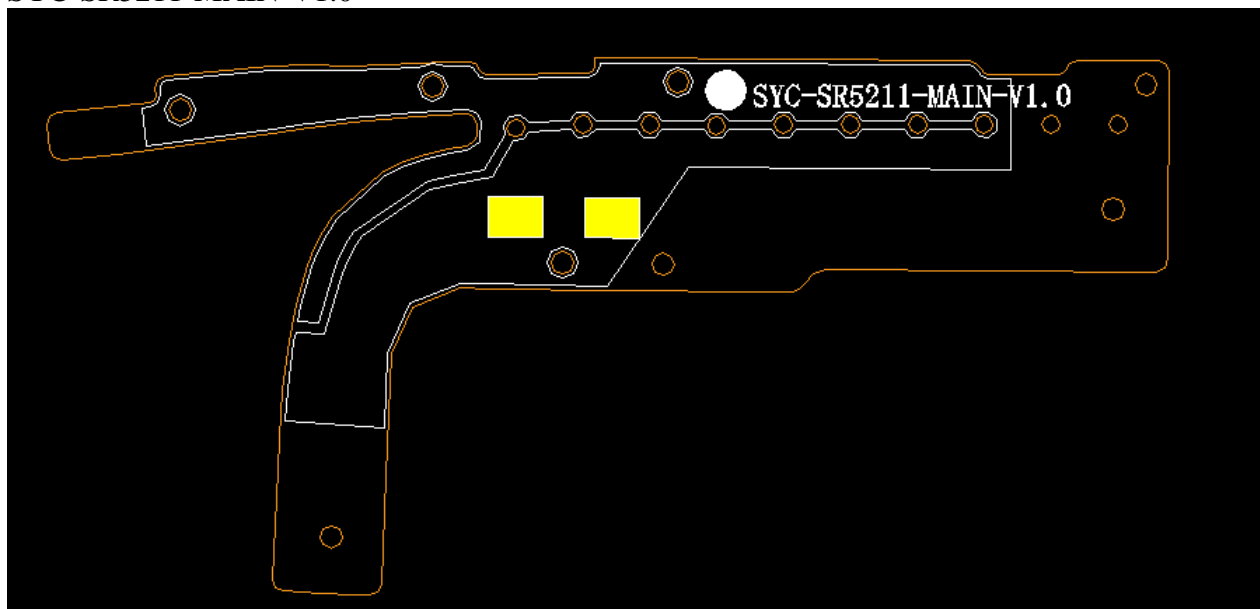
1F, Building 4, No. 99, Lane 215, GaoGuang Road, QingPu District, 201702, Shanghai, PRC

Shenzhen R&D Center : Room 405, Jinke Building, No. 8 Qiongyu Road, Shenzhen 518057, PRC

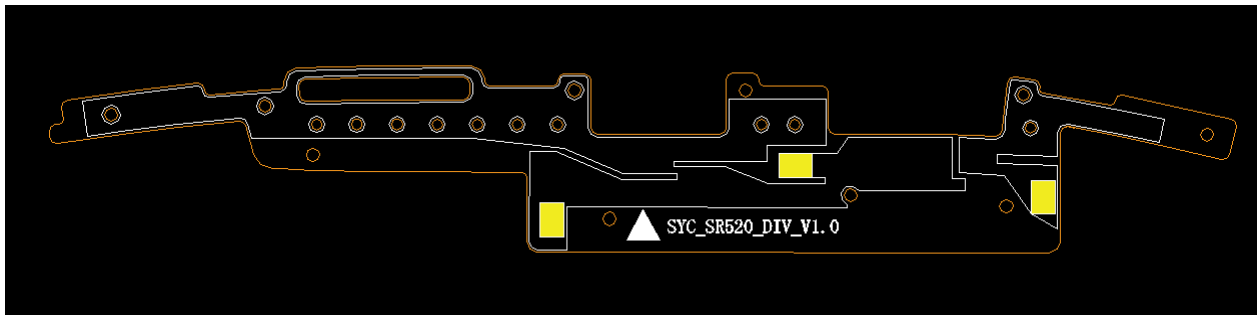
Chongqing R&D Center : 1st Floor, Building C08-1, No. 99, Data Valley East Road, Xiantao Street, Yubei District, Chongqing 401120, PRC

Huizhou manufacturing center : 4-5th floor, No. 1 Zhongxincun Road, LongHu Industrial Zone, Shuikou Town, Huizhou City, 516255, PRC

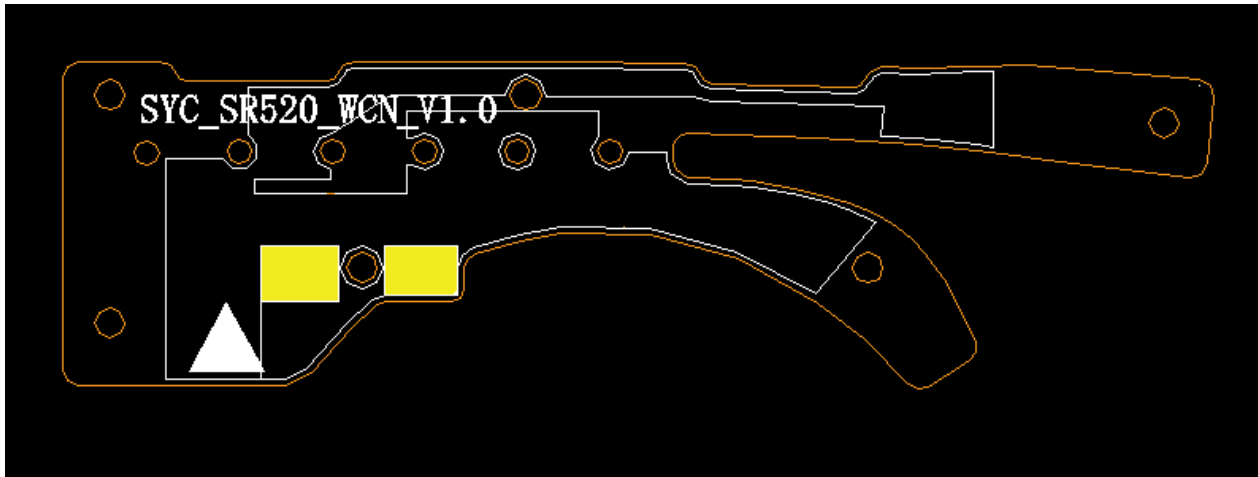
- ※Antenna type
SYC-SR5211-MAIN-V1.0



SYC-SR520_DIV_V1.0



SYC_SR520_WCN_V1.0



Electric Specifications

| TYPE | FPC |
|-----------------------|--|
| Transmitter Frequency | GSM850: 824-848MHz (TX) GSM900: 880-915MHz (TX) DCS1800: 1710-1785MHz (TX) PCS1800: 1850-1909MHz (TX) WCDMAband II: 1852~1907MHz(TX) WCDMAband III: 1712~1752MHz(TX) WCDMAband V : 826~846MHz(TX) WCDMAband VIII: 880~915MHz(TX) LTE B2: 1850~1910MHz(TX) LTE B3: 1710~1785MHz(TX) LTE B4: 1710~1750MHz(TX) LTE B5: 824~848MHz(TX) LTE B7: 2500~2690MHz(TX) LTE B28: 703~747MHz(TX) LTE B66: 1710~1780MHz(TX) LTE B38: 2570~2620MHz(TX) WIFI (2.4G) :2412 -2472 MHz Bluetooth:2408 - 2480 MHz GPS:1575.42MHz |

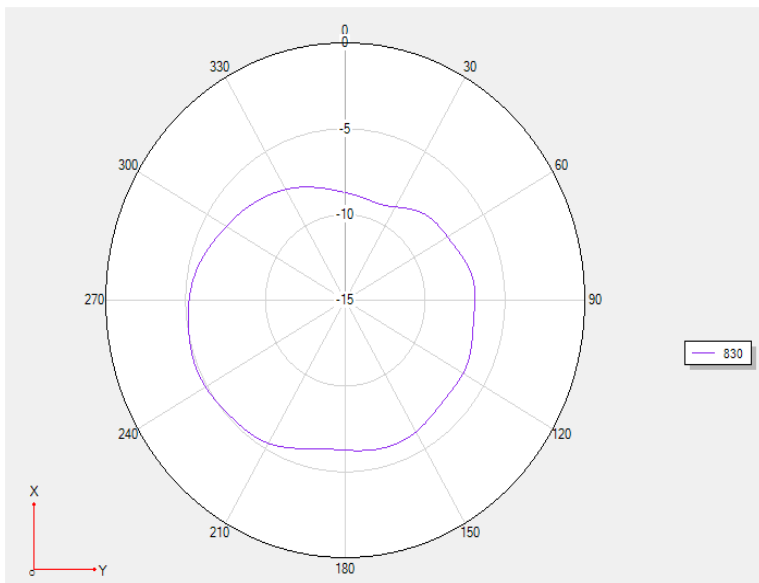
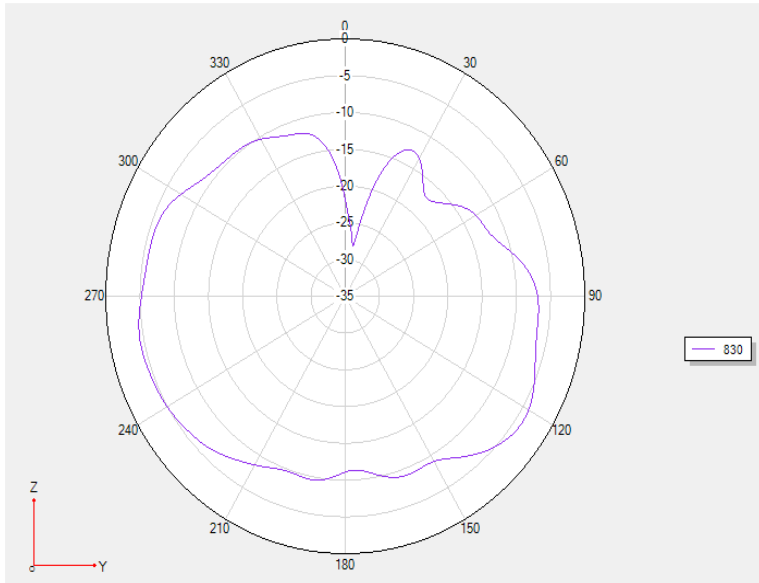
| | |
|--|---|
| <p style="text-align: center;">Receiver Frequency</p> | <p>GSM850: 869-894MHz (RX) GSM900: 925-960MHz (RX) DCS1800: 1805-1880MHz (RX) PCS1900: 1930-1990MHz (RX) WCDMAband II: 1932~1990MHz(RX) WCDMAband III:2110~2160MHz(RX) WCDMAband V: 870~890MHz(RX) WCDMAband VIII: 925~960MHz(RX) LTE B2: 1930~1990MHz(RX) LTE B3: 1805~1880MHz(RX) LTE B4: 2110~2154MHz(RX) LTE B5: 869~893MHz(RX) LTE B7: 2620~2690MHz(RX) LTEB12:730.5-743.5MHZ(RX) LTE B28:758~802MHz(RX) LTE B66: 2110~2199MHz(RX) LTE B38: 2570~2620MHz(RX) WIFI (2.4G) :2412 -2472 MHz Bluetooth:2408 - 2480 MHz GPS:1575.42MHz</p> |
| <p style="text-align: center;">RF-Output Power (E.I.R.P)</p> | <p>GSM850: 33+/-2dBm GSM900: 33+/-2dBm DCS1800:30+/-2dBm PCS1900:30+/-2dBm WCDMA 850: 22.5+/-2dBm WCDMA 900: 22.5+/-2dBm WCDMA 1700: 22.5+/-2dBm WCDMA 1900: 22.5+/-2dBm LTE B2:22+/-2dBm LTE B3:22+/-2dBm LTE B4:22+/-2dBm LTE B5:22+/-2dBm LTE B7:22+/-2dBm LTE B12:22+/-2dBm LTE B28:22+/-2dBm LTE B66:22+/-2dBm LTE B38:22+/-2dBm</p> |
| <p style="text-align: center;">Antenna Gain</p> | <p>GSM850:-3.85 dBi GSM900:-3.78 dBi DCS1800:-1.05dBi PCS1900:-1.67dBi WCDMA 850: -3.85dBi WCDMA 900: -3.78dBi WCDMA 1700: -1.05dBi WCDMA 1900:-1.67dBi LTE B2:-1.67dBi LTE B3:-1.05dBi LTE B4:-1.05dBi LTE B5:-3.85dBi LTE B7:2.39 dBi</p> |

| | |
|---------------------------|---|
| | <p>LTE B12: -4.25dBi LTE B28: -4.25dBi LTE B66: -1.05dBi LTE B38: 2.39 dBi 2.4G WIFI: 0.95 dBi GPS: 0.89dBi</p> |
| <p>Power of antenna:</p> | <p>GSM850: 25.6dBm GSM900: 25.4dBm DCS1800: 24.6dBm PCS1900: 24.19dBm WCDMA 850: 15.93dBm WCDMA 900: 14.6dBm WCDMA 1700: 16.65dBm WCDMA 1900: 16.8dBm LTE B2: 17.06dBm LTE B3: 17dBm LTE B4: 17.2 dBm LTE B5: 15.5dBm LTE B7: 17.8dBm LTE B12: 14.63dBm LTE B28: 14.8dBm LTE B66: 17 dBm LTE B38: 17.2dBm WIFI-11b: 12.7dBm WIFI-11g: 10.5dBm WIFI-11n: 8.5dBm BT: 3.8dBm</p> |
| <p>Type of Modulation</p> | <p>GMSK/8PSK/QPSK/16QAM/64QAM/GFSK, $\pi/4$-DQPSK, 8DPSK</p> |

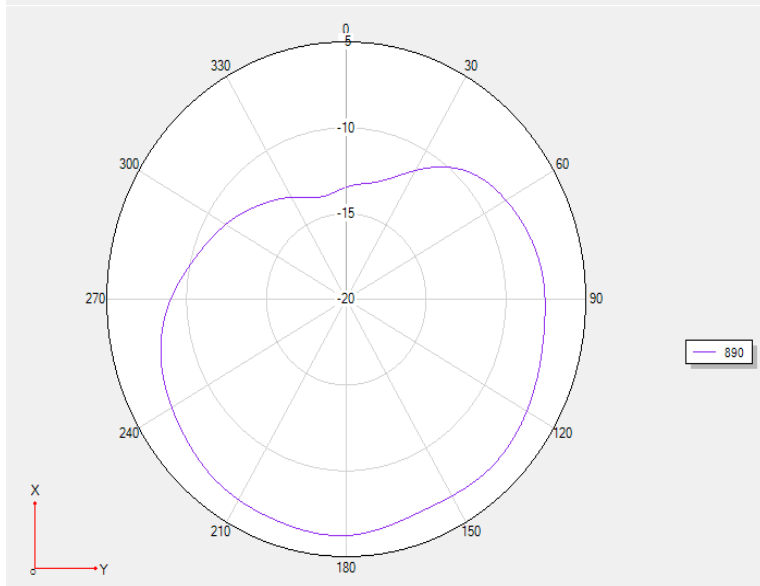
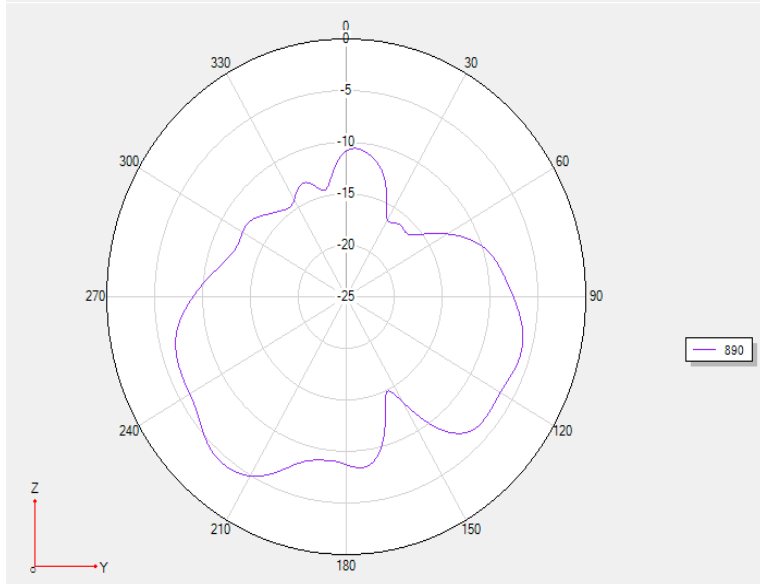
※ Antenna Gain

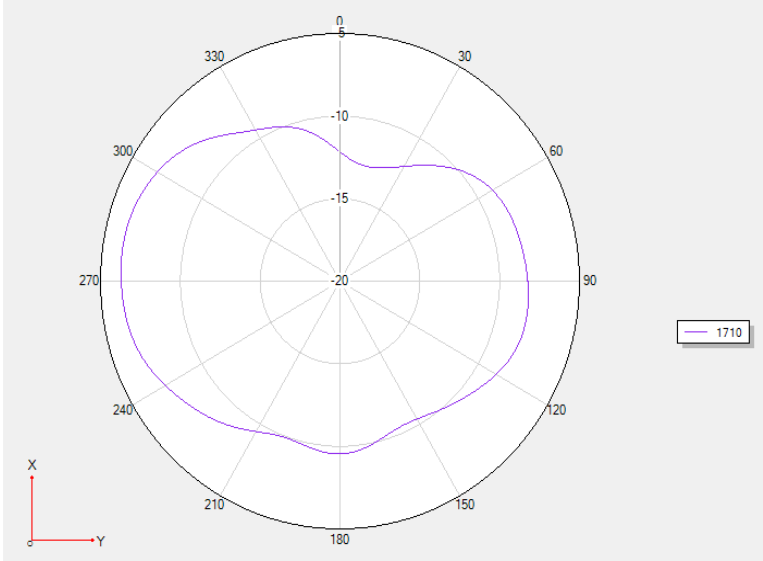
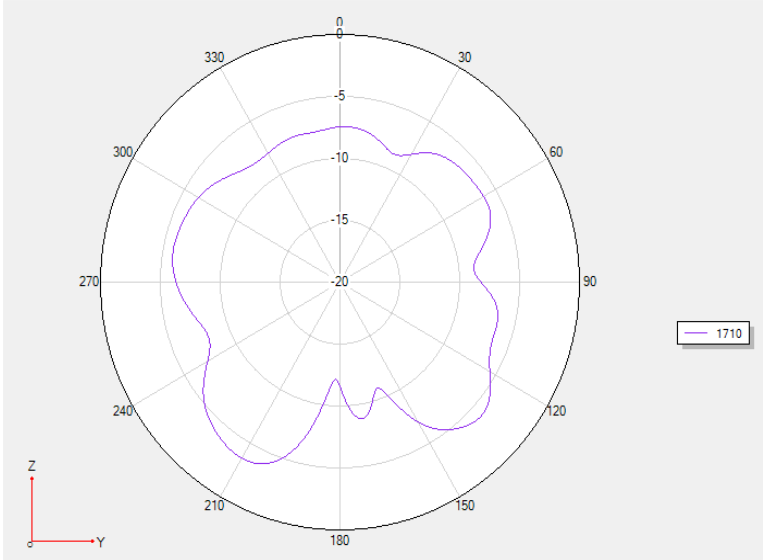
Main Antenna

GSM850/B5

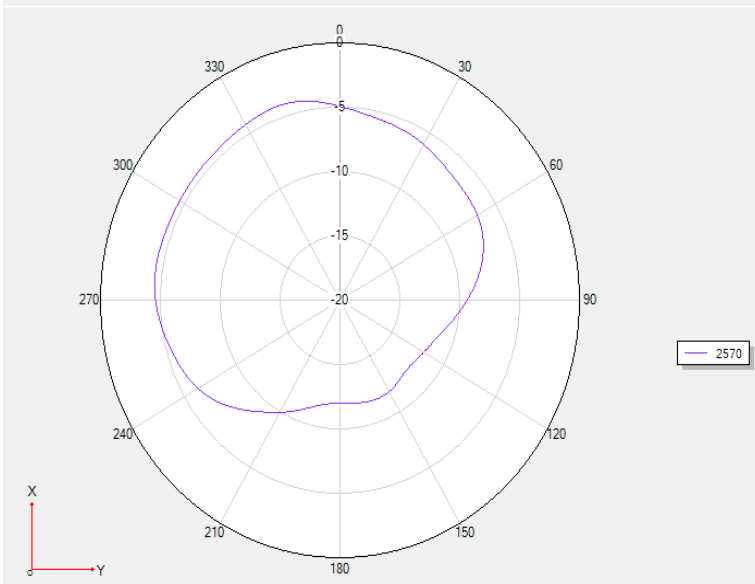
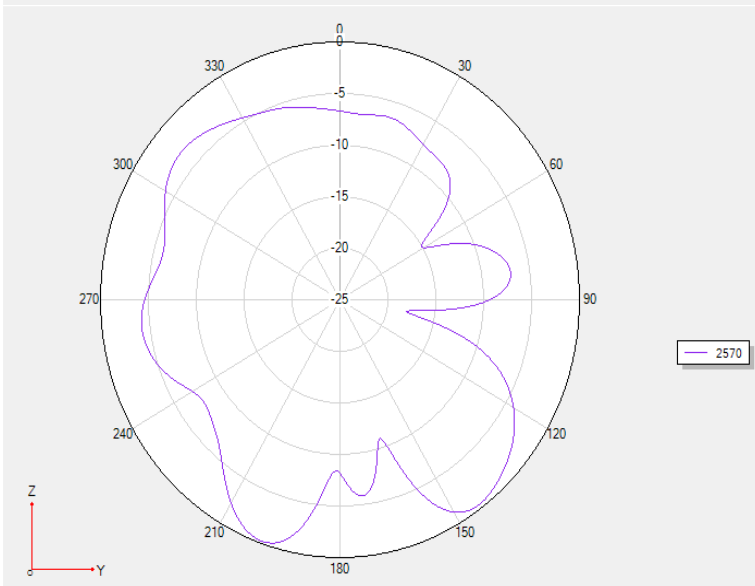
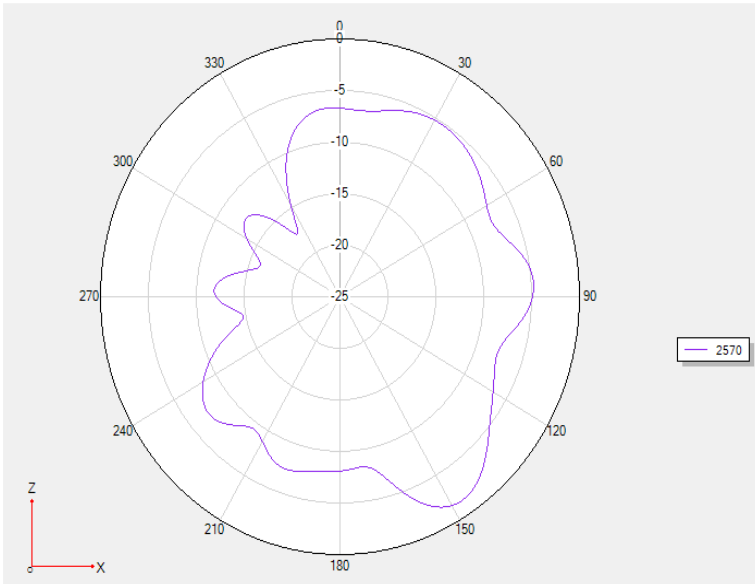


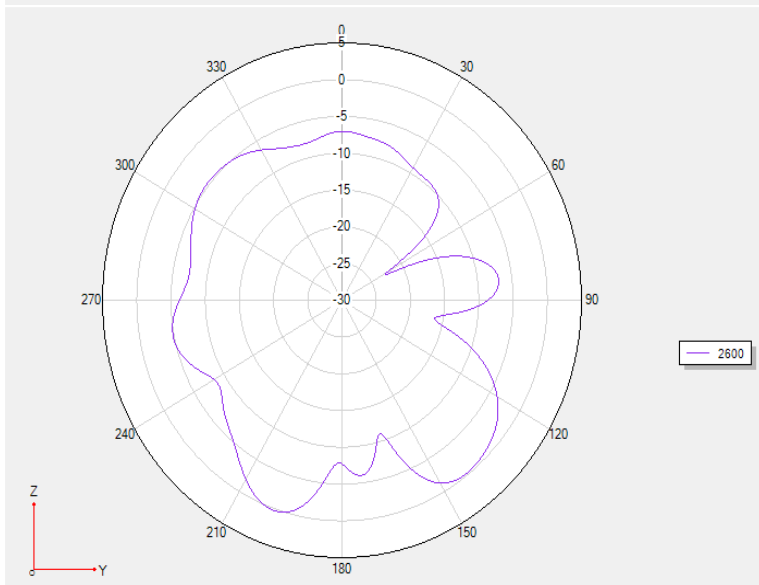
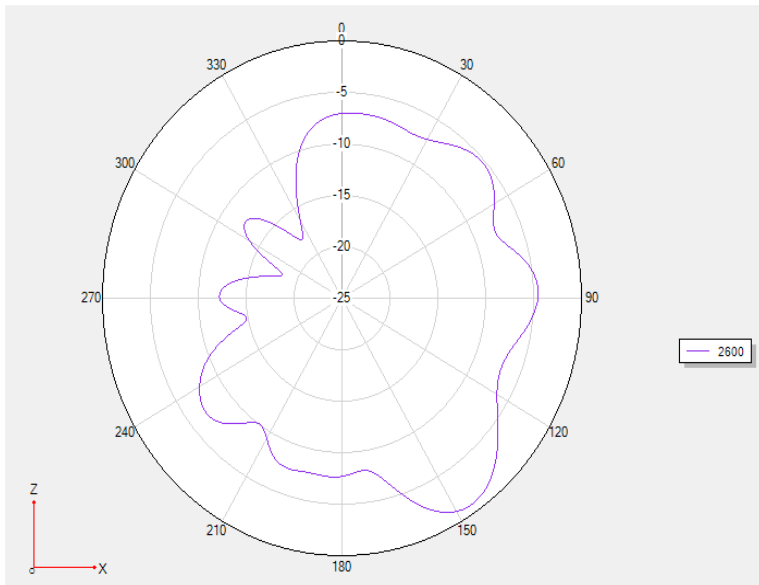
G900 W8



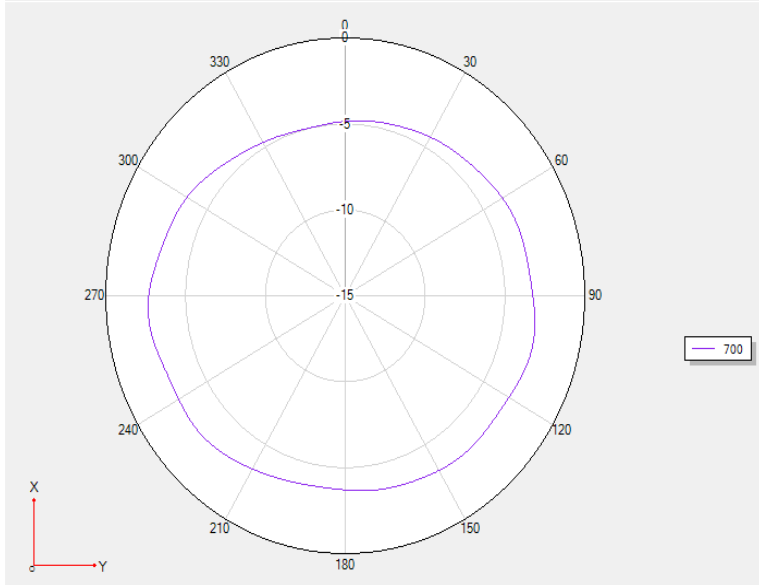
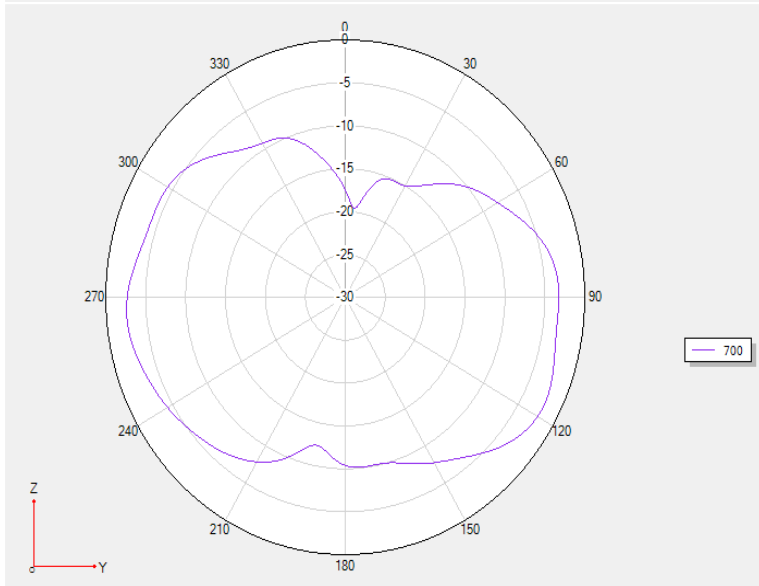


B7



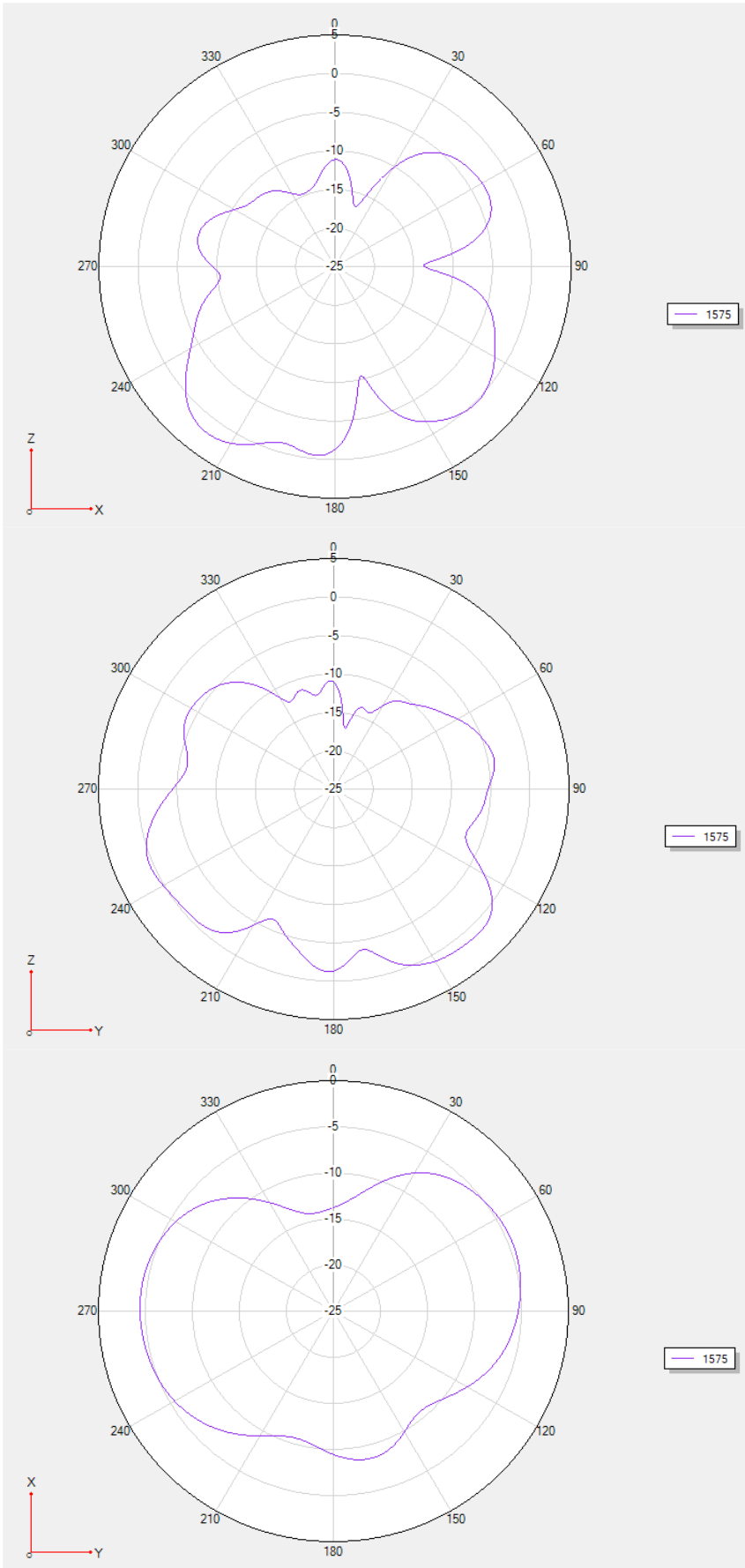


B12//28AB

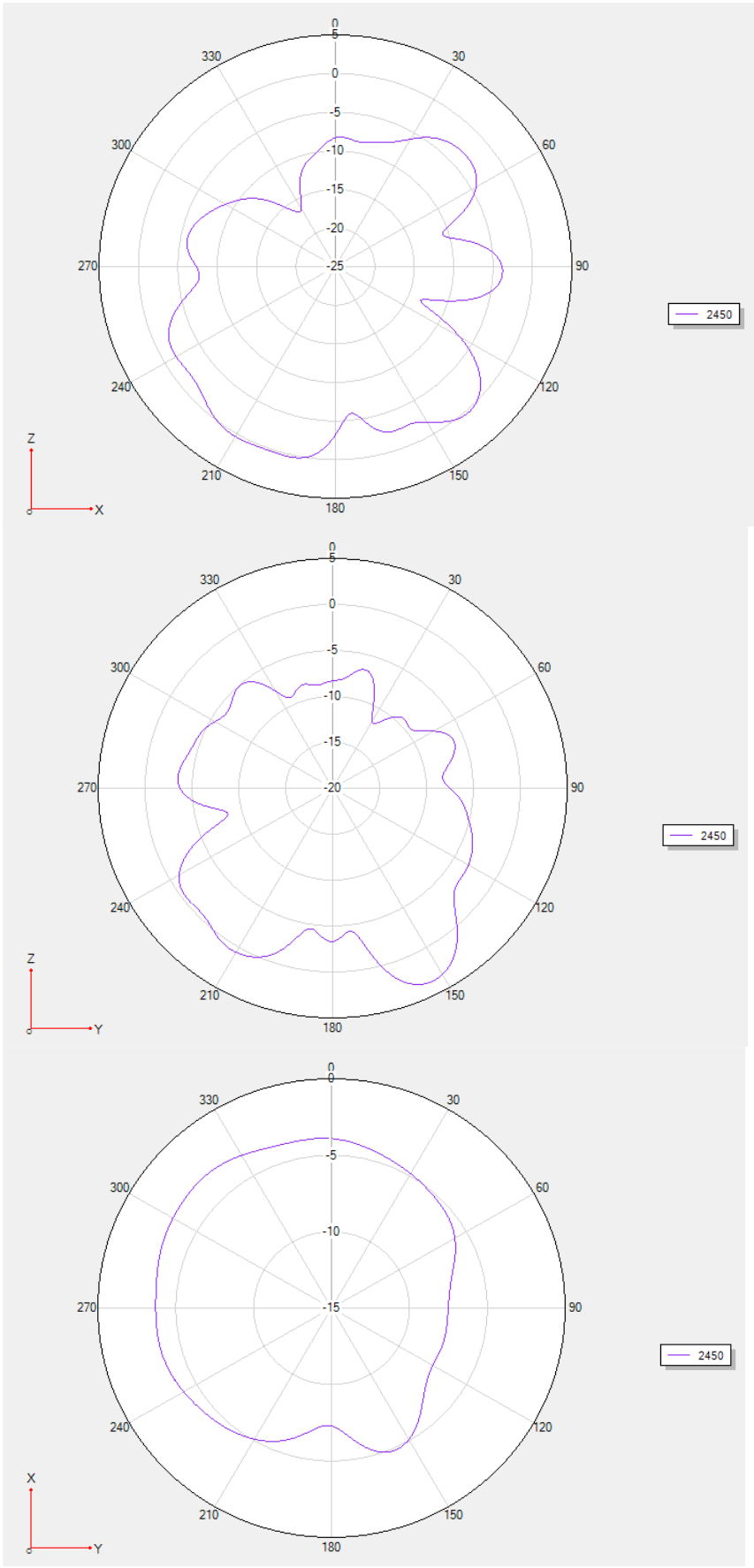


Three-in-one antenna

GPS

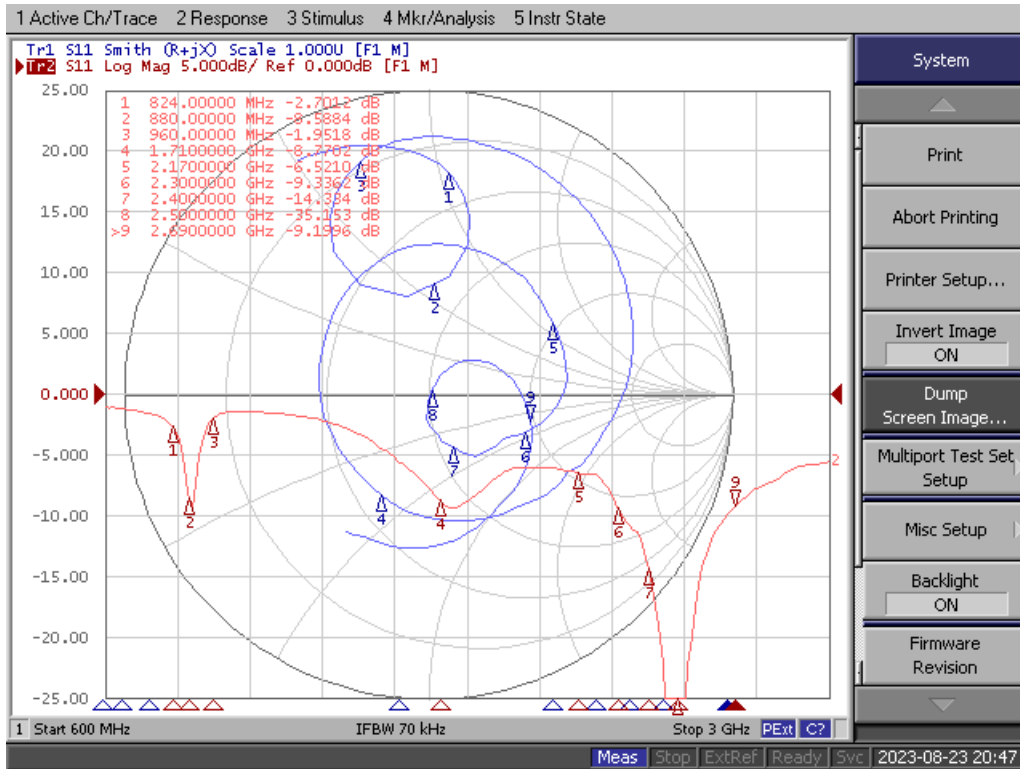


WIFI (2.4G)

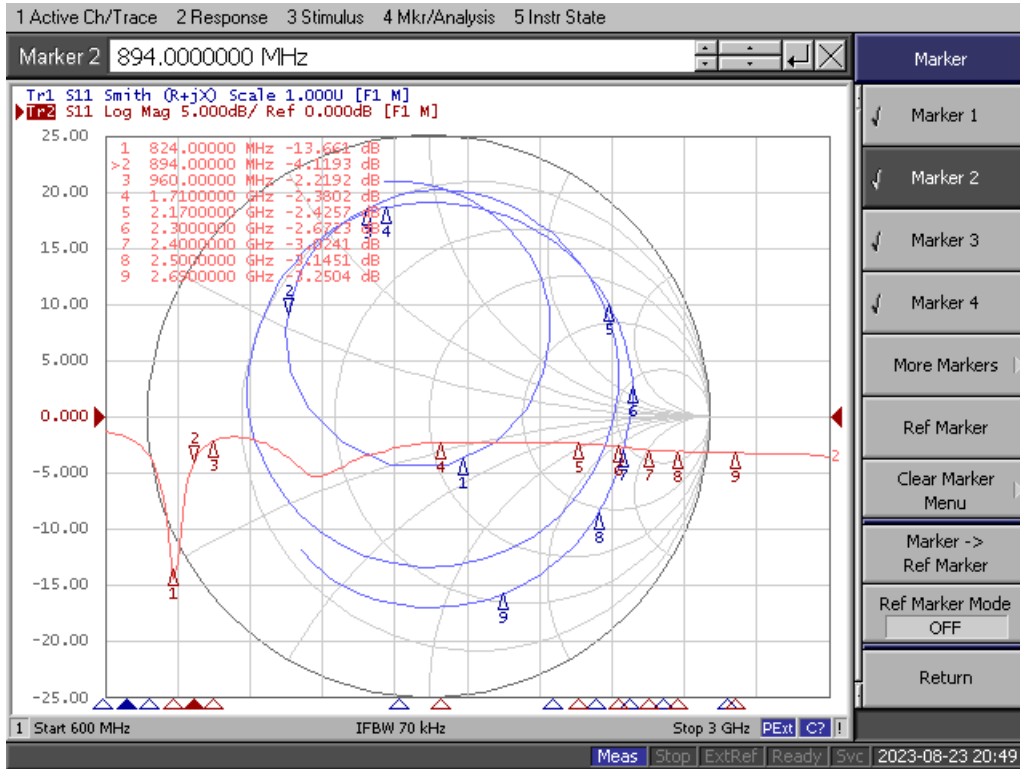


※S11:

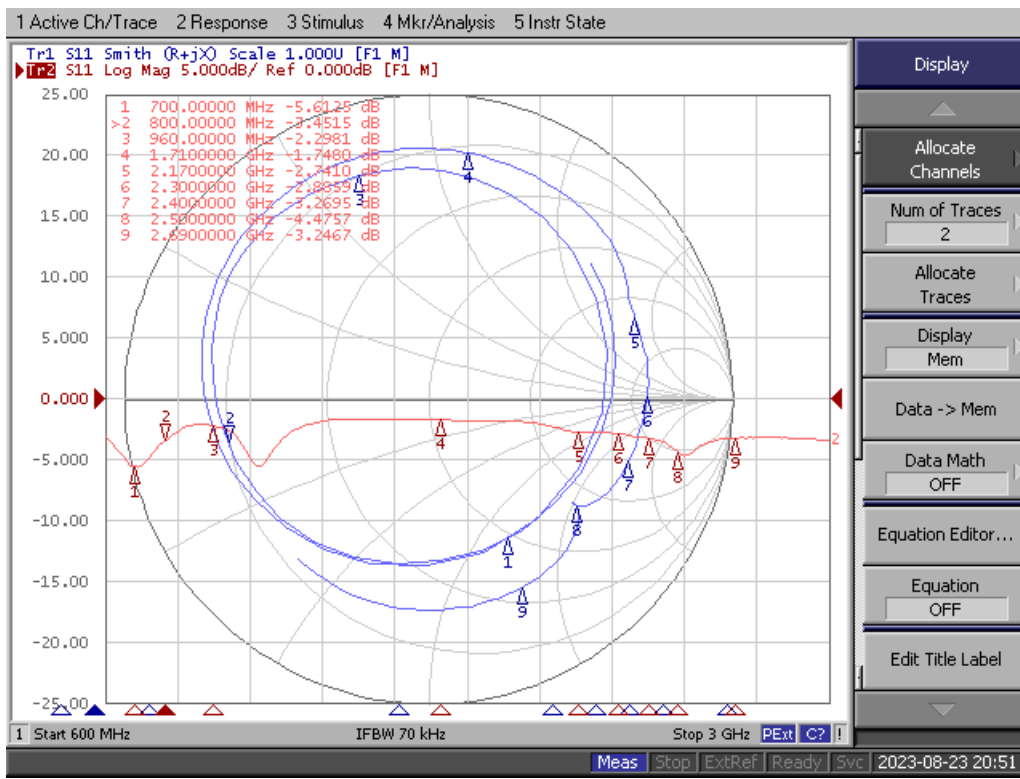
Main Antenna RF1



RF2



RF3



Three-in-one antenna

