

ES5509-Antenna Information

1. Brand and model of Antenna

Brand: Bmobile

Model of Antenna: ES5509

Manufacturer: Shenzhen Amforte Electronics Co., LTD

Address: Room 302, 3 / F, Building B, Hong Kong-Shenzhen Innovation Park, No. 40,

Huoning Road, Dalang Street, Longhua District, Shenzhen,China

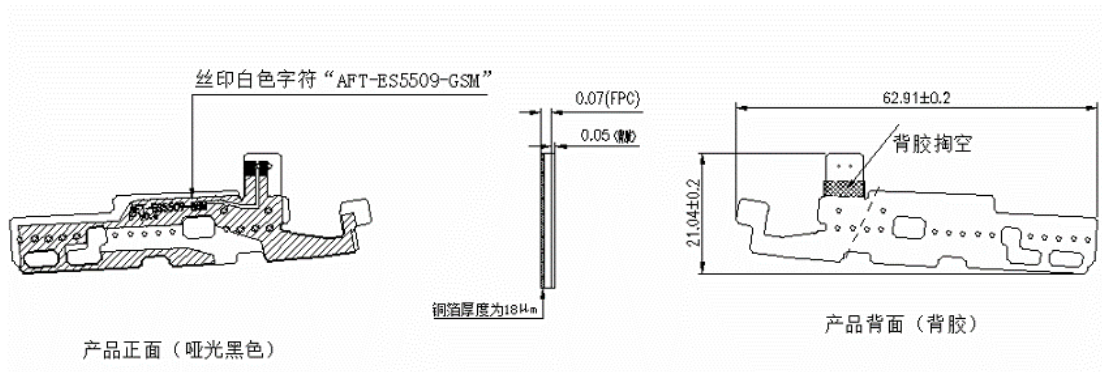
2. Antena Gain in dbi.

antenna	pattern	gain
GSM850	PFIA	-1.5
GSM900	PFIA	-5.4
DCS1800	PFIA	0.9
PCS1900	PFIA	0.3
WCDMA1900	PFIA	0.3
WCDMA1700	PFIA	0.3
WCDMA900	PFIA	-5.4
WCDMA850	PFIA	-1.5
LTE-B2	PFIA	0.3
LTE-B4	PFIA	0.9
LTE-B5	PFIA	-1.5

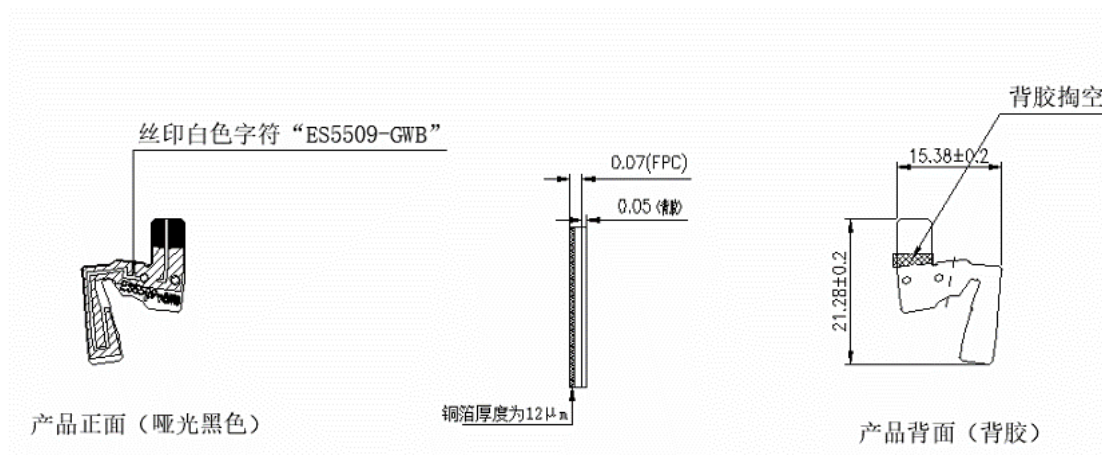
LTE-B7	PFIA	2.5
LTE-B26	PFIA	-1.4
LTE-B28	PFIA	-2.8
LTE-B38	PFIA	2.5
LTE-B66	PFIA	0.9
BT	PFIA	0.83
WIFI	PFIA	0.83

3. Antenna size :

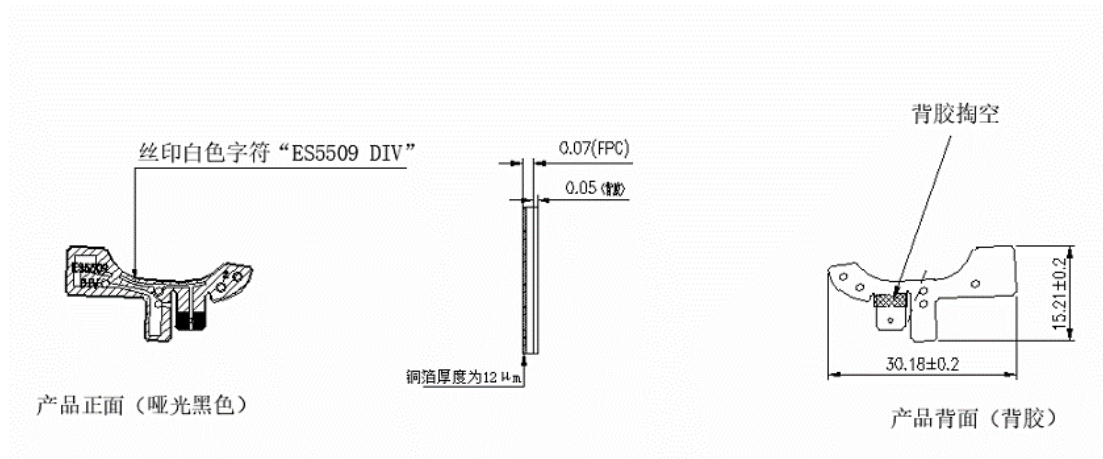
Main antenna : 62.91*21.04*0.12mm



WIFI/BT/GPS antenna: 15.38*21.28*0.12mm



Diversity antenna : 30.18*15.21*0.12mm



main ant gain:

Freq (MHz)	Effi (%)	Gain (dBi)	Freq (MHz)	Effi (%)	Gain (dBi)	Freq (MHz)	Effi (%)	Gain (dBi)
700	16.79	-5.15	1700	34.96	0.41	2240	32.57	1.17
710	17.52	-4.36	1720	41.18	0.89	2260	34.21	1.61
720	19.08	-4.15	1740	45.88	1.05	2280	31.35	1.47
730	21.89	-3.48	1760	50.22	0.79	2300	30.6	1.44
740	23.94	-3.22	1780	58.92	0.78	2320	33.72	1.85
750	26.51	-2.71	1800	62.9	0.99	2340	32.94	1.93
760	28.29	-2.39	1820	67.49	1.45	2360	34.75	2.33
770	30.81	-2.1	1840	64.34	1.41	2380	37.08	2.78
780	34.09	-1.52	1860	62.65	1.24	2400	38.08	3.1
790	40.04	-0.97	1880	57.09	0.77	2420	43.43	3.83
800	38.7	-0.99	1900	56.98	0.83	2440	47.12	4.18
810	43.05	-0.5	1920	51.16	0.34	2460	49.26	4.32
820	42.57	-0.47	1940	43.83	-0.19	2480	49.83	4.4
830	39.5	-0.57	1960	41.34	-0.33	2500	48.05	4.14
840	36.65	-0.78	1980	38.48	-0.45	2520	48.39	4.07
850	32.57	-1.12	2000	39.04	-0.35	2540	41.8	3.38
860	29.52	-1.75	2020	40.1	-0.23	2560	40.25	3.18
870	28.36	-1.86	2040	32.49	-1.18	2580	37.09	2.76
880	25.1	-2.89	2060	37.73	-0.45	2600	34.13	2.29
890	23.08	-3.28	2080	29.8	-1.23	2620	32.24	1.94
900	18.27	-4.26	2100	29.1	-1.06	2640	31.38	1.67
910	15.21	-4.7	2120	32.19	-0.43	2660	29.05	0.95

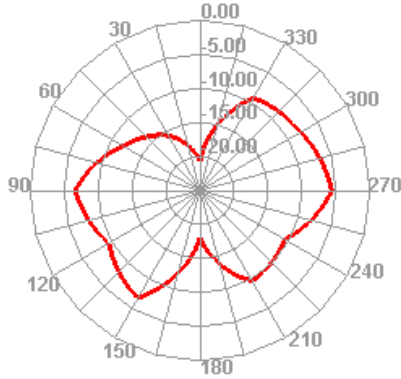
920	11.39	-5.69	2140	31.94	0.05	2680	30.35	0.66
930	9.43	-6.08	2160	32.58	0.63	2700	26.21	-0.12
940	7.55	-6.84	2180	33.07	0.98			
950	6.8	-7.14	2200	35.34	1.32			
960	5.55	-8.11	2220	35.09	1.34			

WIFI/BT Gain :

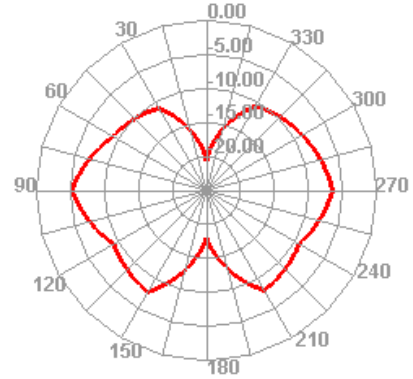
Freq (MHz)	Effi (%)	Gain (dBi)
2400	36.05	0.65
2410	35.94	0.61
2420	36.69	0.83
2430	37.7	0.76
2440	41.05	0.39
2450	45.81	0.82
2460	44.07	0.6
2470	42.04	0.37
2480	42.57	0.62
2490	45.33	0.31
2500	44.57	0.74

Main

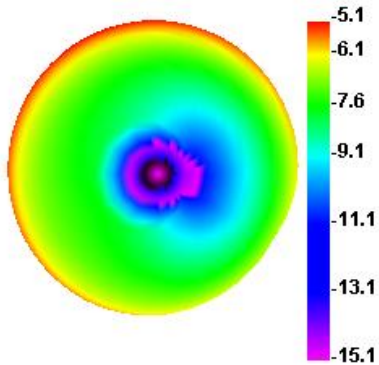
700.000MHz E1



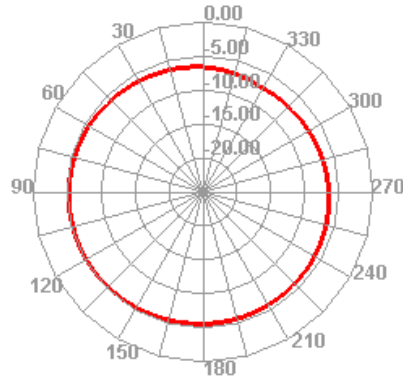
700.000MHz E2



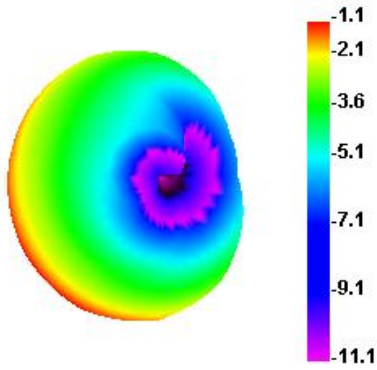
700.000MHz



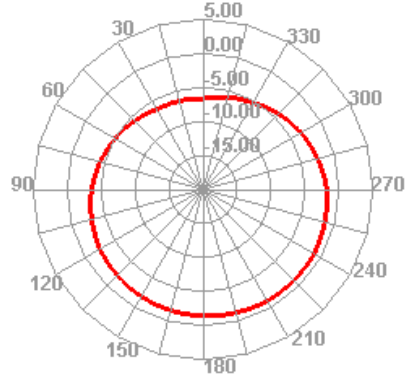
700.000MHz H



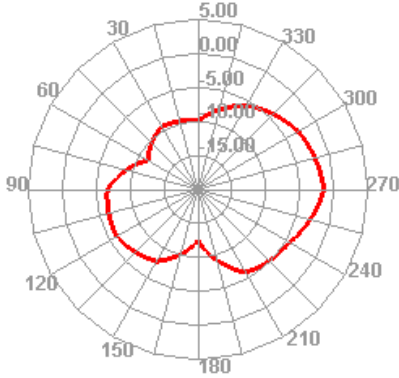
850.000MHz



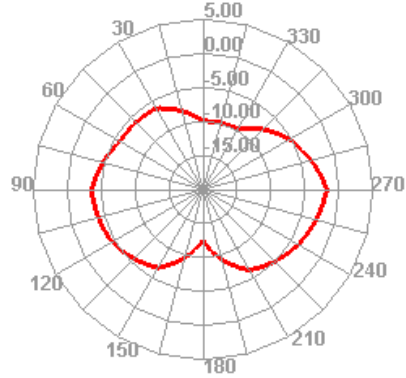
850.000MHz H



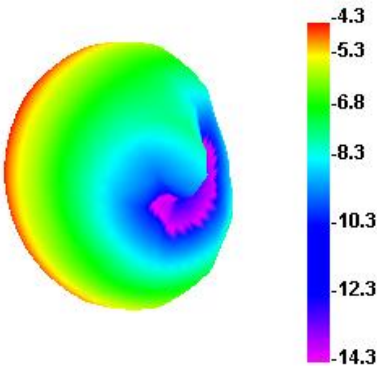
850.000MHz E1



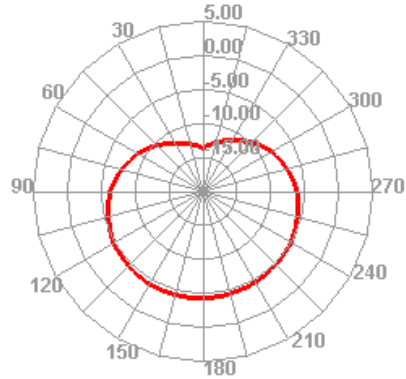
850.000MHz E2



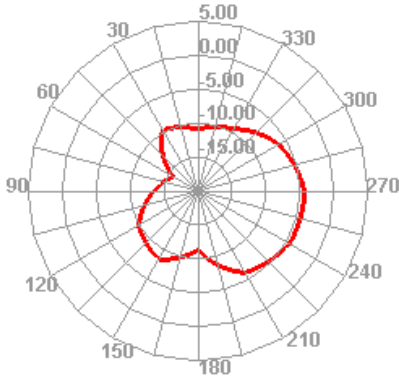
900.000MHz



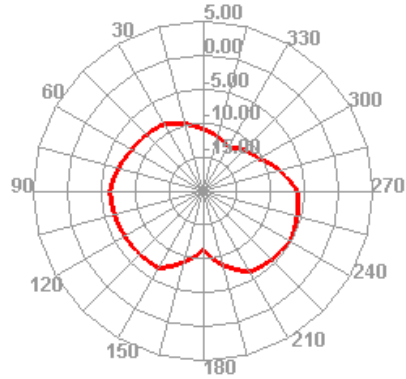
900.000MHz H



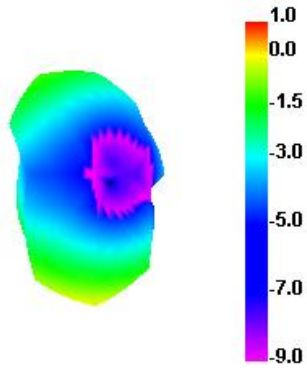
900.000MHz E1



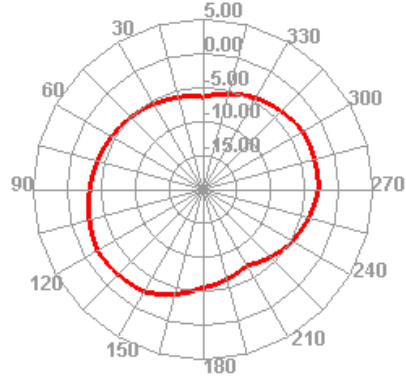
900.000MHz E2



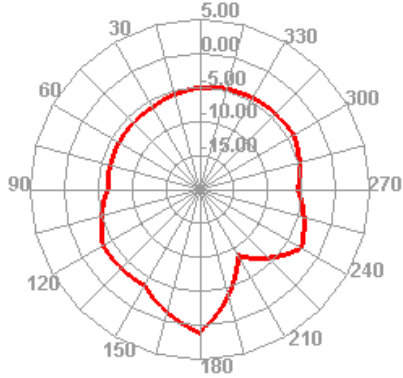
1740.000MHz



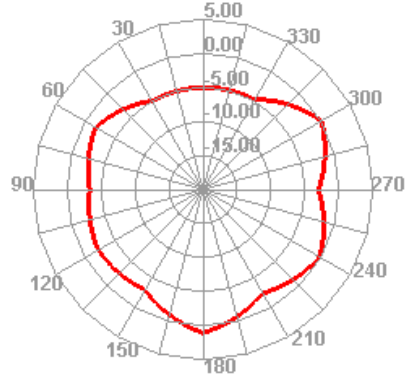
1740.000MHz H



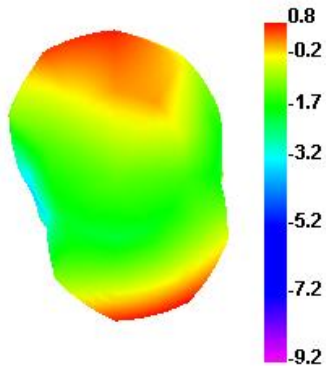
1740.000MHz E1



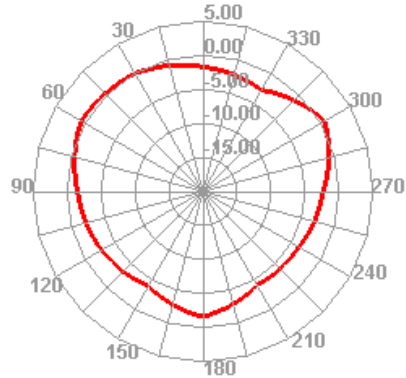
1740.000MHz E2



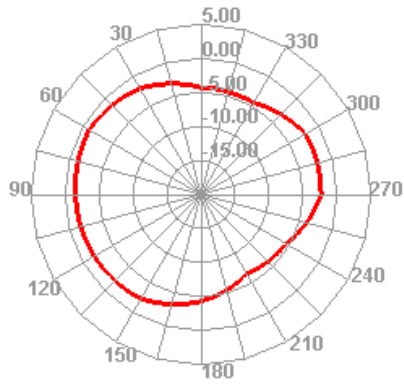
1880.000MHz



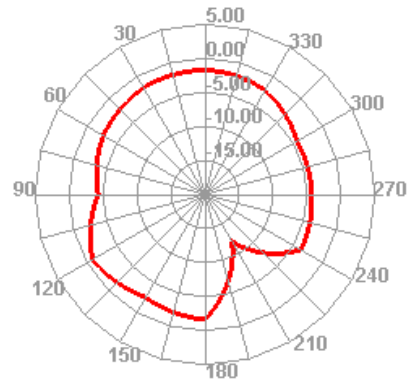
1880.000MHz E2



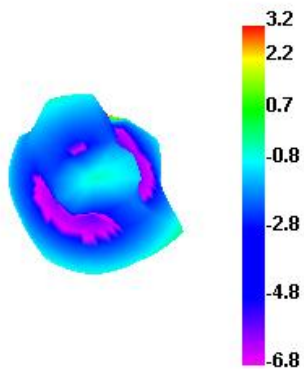
1880.000MHz H



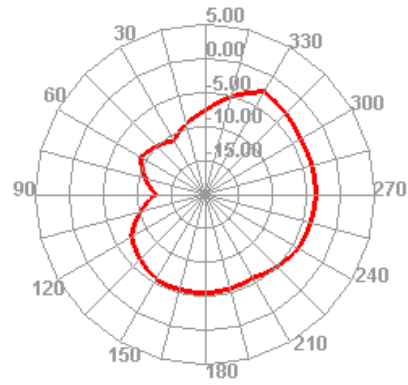
1880.000MHz E1



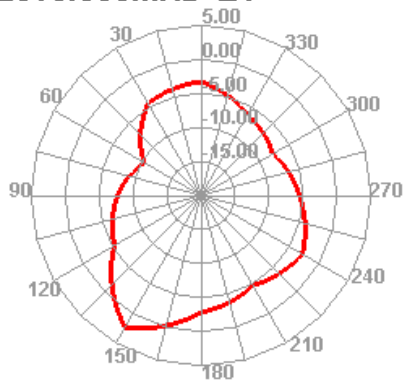
2560.000MHz



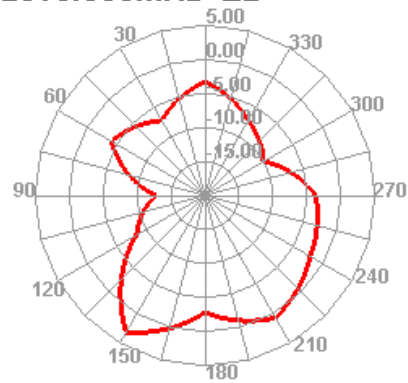
2560.000MHz H



2560.000MHz E1

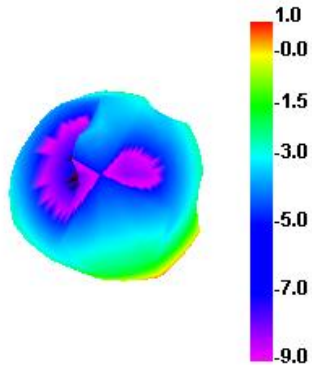


2560.000MHz E2

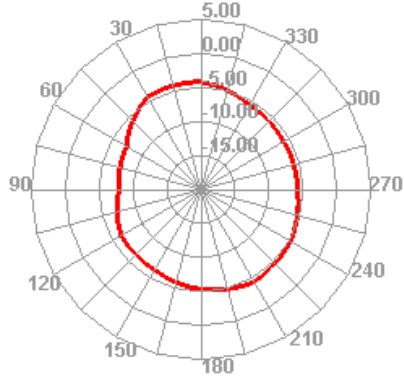


(WiFi/BT)

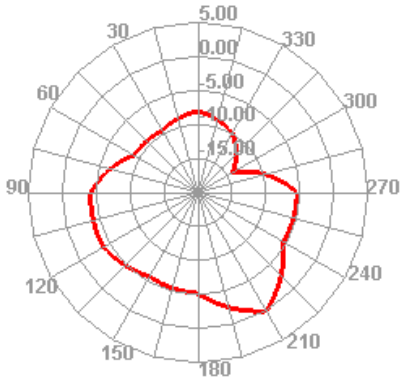
2430.000MHz



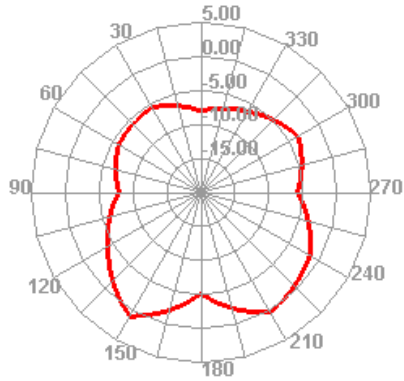
2430.000MHz H



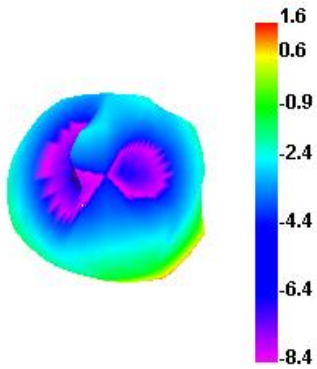
2430.000MHz E1



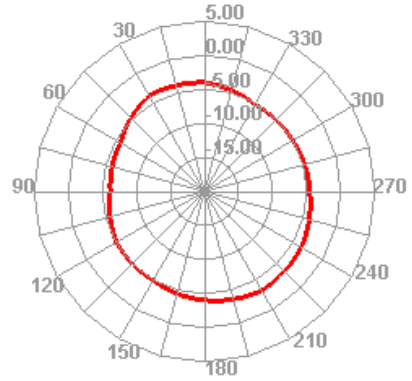
2430.000MHz E2



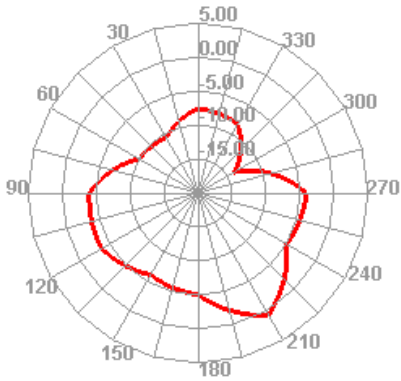
2460.000MHz



2460.000MHz H



2460.000MHz E1



2460.000MHz E2

