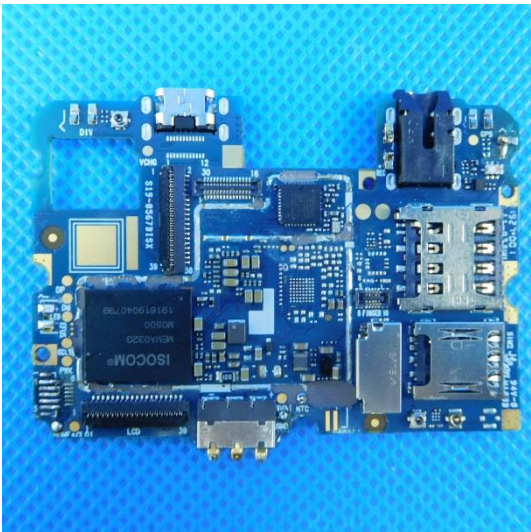
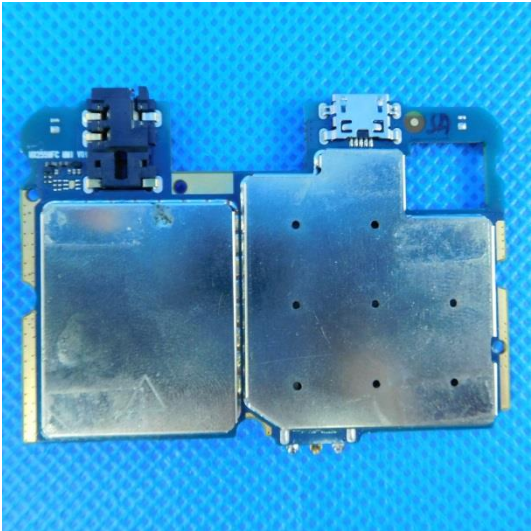
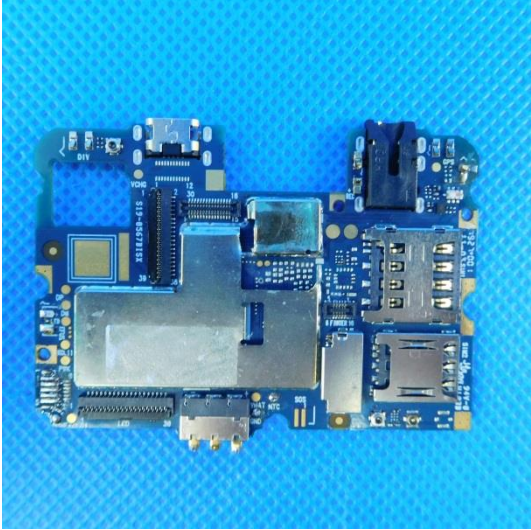
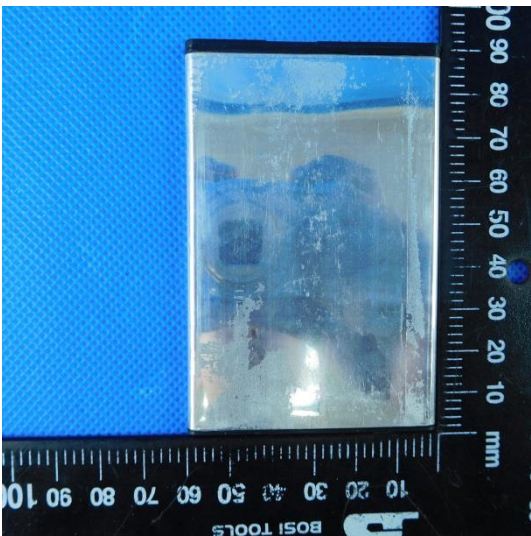
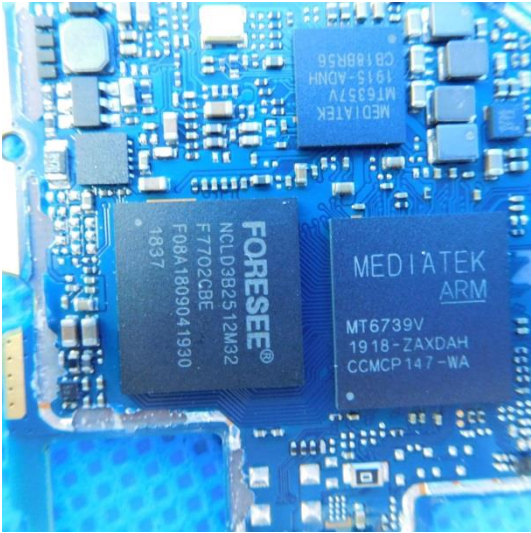
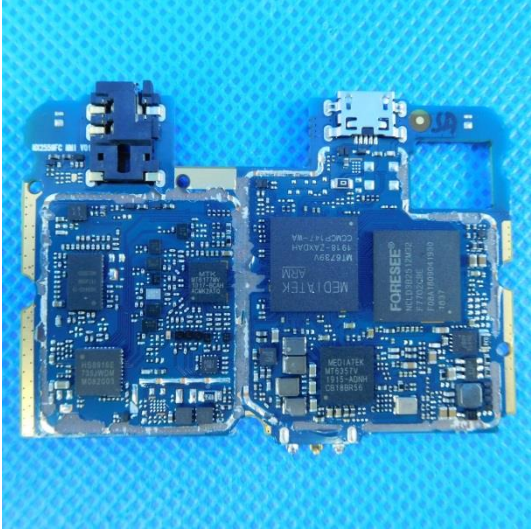


Model:X10

Internal photos of the EUT









Li-ion Battery

Model: ES6101

Voltage: DC3.8V Capacity: 3000mAh
11.4Wh

CAUTION

MAY EXPLODE IF DAMAGED OR DISPOSED OF IN FIRE
DO NOT SHORT-CIRCUIT
DO NOT DISASSEMBLE WITHOUT AUTHORIZATION
USE SPECIFIED ADAPTERS ONLY

CHARGING ENVIRONMENT
TEMPERATURE: 0°C-35°C



Made In China