




TEST REPORT

Report No. : **CHTEW19080013** Report verification: 

Project No..... : **SHT1907059702EW**

FCC ID..... : **ZSW-30-091**

Applicant's name..... : **b mobile HK Limited**

Address..... : Flat 18; 14/F Block 1; Golden Industrial Building;16-26 Kwai Tak Street; Kwai Chung; New Territories; Hong Kong

Manufacturer..... : b mobile HK Limited

Address..... : Flat 18; 14/F Block 1; Golden Industrial Building;16-26 Kwai Tak Street; Kwai Chung; New Territories; Hong Kong

Test item description : **Mobile Phone**

Trade Mark : Bmobile

Model/Type reference..... : X10

Listed Model(s) : -


Standard : **FCC 47 CFR Part2.1093
IEEE Std C95.1, 1999 Edition
IEEE 1528: 2013**


Date of receipt of test sample..... : Jul.19, 2019


Date of testing..... : Jul.19, 2019- Aug.05, 2019

Date of issue..... : Aug.06, 2019

Result..... : **PASS**

Compiled by
 (position+printedname+signature).... : File administrators: Fanghui Zhu 

Supervised by
 (position+printedname+signature).... : Test Engineer: Xiaodong Zhao 

Approved by
 (position+printedname+signature).... : Manager: Hans Hu 

Testing Laboratory Name : **Shenzhen Huatongwei International Inspection Co., Ltd**

Address..... : 1/F, Bldg 3, Hongfa Hi-tech Industrial Park, Genyu Road, Tianliao, Gongming, Shenzhen, China

Shenzhen Huatongwei International Inspection Co., Ltd. All rights reserved.

This publication may be reproduced in whole or in part for non-commercial purposes as long as the Shenzhen Huatongwei International Inspection Co., Ltd is acknowledged as copyright owner and source of the material. Shenzhen Huatongwei International Inspection Co., Ltd takes no responsibility for and will not assume liability for damages resulting from the reader's interpretation of the reproduced material due to its placement and context.

The test report merely correspond to the test sample.

Contents

<u>1.</u>	<u>Test Standards and Report version</u>	<u>4</u>
1.1.	Test Standards	4
1.2.	Report version	4
<u>2.</u>	<u>Summary</u>	<u>5</u>
2.1.	Client Information	5
2.2.	Product Description	5
<u>3.</u>	<u>Test Environment</u>	<u>7</u>
3.1.	Test laboratory	7
3.2.	Test Facility	7
3.3.	Environmental conditions	7
<u>4.</u>	<u>Equipments Used during the Test</u>	<u>8</u>
<u>5.</u>	<u>Measurement Uncertainty</u>	<u>9</u>
<u>6.</u>	<u>SAR Measurements System Configuration</u>	<u>10</u>
6.1.	SAR Measurement Set-up	10
6.2.	DASY5 E-field Probe System	11
6.3.	Phantoms	12
6.4.	Device Holder	12
<u>7.</u>	<u>SAR Test Procedure</u>	<u>13</u>
7.1.	Scanning Procedure	13
7.2.	Data Storage and Evaluation	15
<u>8.</u>	<u>Position of the wireless device in relation to the phantom</u>	<u>17</u>
8.1.	Head Position	17
8.2.	Body Position	18
8.3.	Hotspot Mode Exposure conditions	18
<u>9.</u>	<u>Dielectric Property Measurements & System Check</u>	<u>19</u>
9.1.	Tissue Dielectric Parameters	19
9.2.	System Check	21
<u>10.</u>	<u>SAR Exposure Limits</u>	<u>28</u>
<u>11.</u>	<u>Conducted Power Measurement Results</u>	<u>29</u>
11.1.	GSM	29
11.2.	WCDMA	30
11.3.	LTE	32
11.4.	WiFi	43
11.5.	Bluetooth	43
<u>12.</u>	<u>Maximum Tune-up Limit</u>	<u>44</u>
<u>13.</u>	<u>Antenna Location</u>	<u>50</u>
<u>14.</u>	<u>Measured and Reported SAR Results</u>	<u>51</u>
14.1.	Head SAR	53
14.2.	Body SAR	59
14.3.	Hotspot SAR	62
<u>15.</u>	<u>SAR Measurement Variability</u>	<u>67</u>
<u>16.</u>	<u>Simultaneous Transmission analysis</u>	<u>68</u>
16.1.	Head	69

16.2. Body-worn	73
16.3. Hotspot	75
17. TestSetup Photos	78
18. External and Internal Photos of the EUT	80

1 . Test Standards and Report version

1.1. Test Standards

The tests were performed according to following standards:

[FCC 47 Part 2.1093](#): Radiofrequency radiation exposure evaluation: portable devices.

[IEEE Std C95.1, 1999 Edition](#): IEEE Standard for Safety Levels with Respect to Human Exposure to Radio Frequency Electromagnetic Fields, 3 kHz to 300 GHz

[IEEE Std 1528™-2013](#): IEEE Recommended Practice for Determining the Peak Spatial-Average Specific Absorption Rate (SAR) in the Human Head from Wireless Communications Devices: Measurement Techniques.

FCC published RF exposure KDB procedures:

[865664 D01 SAR Measurement 100 MHz to 6 GHz v01r04](#): SAR Measurement Requirements for 100 MHz to 6 GHz

[865664 D02 RF Exposure Reporting v01r02](#): RF Exposure Compliance Reporting and Documentation Considerations

[447498 D01 General RF Exposure Guidance v06](#): Mobile and Portable Device RF Exposure Procedures and Equipment Authorization Policies

[248227 D01 802.11 Wi-Fi SAR v02r02](#): SAR Measurement Procedures for 802.11 a/b/g Transmitters

[648474 D04 Handset SAR v01r03](#): SAR Evaluation Considerations for Wireless Handsets

[941225 D01 3G SAR Procedures v03r01](#): SAR Measurement Procedures for 3G Devices

[941225 D05 SAR for LTE Devices v02r05](#): SAR Evaluation Considerations for LTE Devices

[941225 D06 Hotspot Mode v02r01](#): SAR Evaluation Procedures for Portable Devices with Wireless Router Capabilities

[TCB workshop](#) April, 2019; Page 19, Tissue Simulating Liquids (TSL)

1.2. Report version

Revision No.	Date of issue	Description
N/A	2019-08-06	Original

2. Summary

2.1. Client Information

Applicant:	b mobile HK Limited
Address:	Flat 18; 14/F Block 1; Golden Industrial Building;16-26 Kwai Tak Street; Kwai Chung; New Territories; Hong Kong
Manufacturer:	b mobile HK Limited
Address:	Flat 18; 14/F Block 1; Golden Industrial Building;16-26 Kwai Tak Street; Kwai Chung; New Territories; Hong Kong

2.2. Product Description

Name of EUT:	Mobile Phone			
Trade Mark:	Bmobile			
Model No.:	X10			
Listed Model(s):	-			
Power supply:	DC 3.8V			
Device Category:	Portable			
Product stage:	Production unit			
RF Exposure Environment:	General Population/Uncontrolled			
IMEI:	352378094738865			
Hardware version:	V01			
Software version:	Bmobile_X10_TEM_MX_V001			
Device Dimension:	Overall (Length x Width x Thickness): 152x74x9.5mm			
Maximum SAR Value				
Separation Distance:	Body-worn:	10mm		
	Hotspot:	10mm		
Max Report SAR Value(1g):	Test location:	PCE	DTS	Simultaneous Tx
	Head:	0.421 W/kg	0.385 W/kg	0.806 W/kg
	Body-worn:	1.015 W/kg	0.105 W/kg	1.120 W/kg
	Hotspot:	1.015 W/kg	0.105 W/kg	1.120 W/kg
GSM				
Operation Band:	GSM850 PCS1900			
Support Network:	GSM,GPRS,EGPRS			
Operating Mode:	GSM:GMSK GPRS:GMSK EGPRS:8PSK			
GPRS Multi-Slot Class:	12			
EGPRS Multi-Slot Class:	12			
Antenna Type:	PIFA			

WCDMA	
Operation Band:	FDD Band II FDD Band V
Power Class:	Class 3
Operating Mode:	UMTS Rel. 99 (Voice & Data) HSDPA HSUPA
Antenna Type:	PIFA
LTE	
Operation Band:	FDD Band 2 FDD Band 4 FDD Band 5 FDD Band 7
Power Class:	Class 3
Operating Mode:	QPSK 16QAM
Antenna Type:	PIFA
WiFi 2.4G	
Operating Mode:	802.11b 802.11g 802.11n(HT20)
Antenna Type:	PIFA
Bluetooth	
Version:	BT2.1+EDR
Operating Mode:	GFSK $\pi/4$ DQPSK 8DPSK
Antenna Type:	PIFA
Bluetooth	
Version:	BT2.1+BLE
Operating Mode:	GFSK
Antenna Type:	PIFA
<i>Remark:</i>	
<ol style="list-style-type: none"> 1. The EUT battery must be fully charged and checked periodically during the test to ascertain uniform power. 2. The Test EUT support two SIM card(SIM1,SIM2),so all the tests are performed at each SIM card (SIM1,SIM2) mode, the datum recorded is the worst case for all the mode at SIM1 Card mode. 	

3. Test Environment

3.1. Test laboratory

Laboratory: Shenzhen Huatongwei International Inspection Co., Ltd.

Address: 1/F, Bldg 3, Hongfa Hi-tech Industrial Park, Genyu Road, Tianliao, Gongming, Shenzhen, China

3.2. Test Facility

CNAS-Lab Code: L1225

Shenzhen Huatongwei International Inspection Co., Ltd. has been assessed and proved to be in compliance with CNAS-CL01 Accreditation Criteria for Testing and Calibration Laboratories (identical to ISO/IEC17025: 2005 General Requirements) for the Competence of Testing and Calibration Laboratories.

A2LA-Lab Cert. No.: 3902.01

Shenzhen Huatongwei International Inspection Co., Ltd. EMC Laboratory has been accredited by A2LA for technical competence in the field of electrical testing, and proved to be in compliance with ISO/IEC 17025: 2005 General Requirements for the Competence of Testing and Calibration Laboratories and any additional program requirements in the identified field of testing.

FCC-Registration No.: 762235

Shenzhen Huatongwei International Inspection Co., Ltd. EMC Laboratory has been registered and fully described in a report filed with the FCC (Federal Communications Commission). The acceptance letter from the FCC is maintained in our files. Registration 762235.

IC-Registration No.: 5377A

Two 3m Alternate Test Site of Shenzhen Huatongwei International Inspection Co., Ltd. has been registered by Certification and Engineering Bureau of Industry Canada for the performance of radiated measurements with Registration No. 5377A.

ACA

Shenzhen Huatongwei International Inspection Co., Ltd. EMC Laboratory can also perform testing for the Australian C-Tick mark as a result of our A2LA accreditation.

3.3. Environmental conditions

During the measurement the environmental conditions were within the listed ranges:

Ambient temperature	18 °C to 25 °C
Ambient humidity	30%RH to 70%RH
Air Pressure	950-1050mbar

4. Equipments Used during the Test

Used	Test Equipment	Manufacturer	Model No.	Serial No.	Cal. date (YY-MM-DD)	Due date (YY-MM-DD)
●	Data Acquisition Electronics DAEx	SPEAG	DAE4	1549	2019/03/19	2020/03/18
●	E-field Probe	SPEAG	EX3DV4	7494	2019/03/25	2020/03/24
●	Universal Radio Communication Tester	R&S	CMW500	137681	2018/07/11	2019/07/10
● Tissue-equivalent liquids Validation						
●	Dielectric Assessment Kit	SPEAG	DAK-3.5	1267	N/A	N/A
○	Dielectric Assessment Kit	SPEAG	DAK-12	1130	N/A	N/A
●	Network analyzer	Keysight	E5071C	MY46733048	2018/09/19	2019/09/18
● System Validation						
○	System Validation Antenna	SPEAG	CLA-150	4024	2018/02/21	2021/02/20
○	System Validation Dipole	SPEAG	D450V3	1102	2018/02/23	2021/02/22
○	System Validation Dipole	SPEAG	D750V3	1180	2018/02/07	2021/02/06
●	System Validation Dipole	SPEAG	D835V2	4d238	2018/02/19	2021/02/18
●	System Validation Dipole	SPEAG	D1750V2	1164	2018/02/06	2021/02/05
●	System Validation Dipole	SPEAG	D1900V2	5d226	2018/02/22	2021/02/21
●	System Validation Dipole	SPEAG	D2450V2	1009	2018/02/05	2021/02/04
●	System Validation Dipole	SPEAG	D2600V2	1150	2018/02/05	2021/02/04
○	System Validation Dipole	SPEAG	D5GHzV2	1273	2018/02/21	2021/02/20
●	Signal Generator	R&S	SMB100A	114360	2018/08/21	2019/08/20
●	Power Viewer for Windows	R&S	N/A	N/A	N/A	N/A
●	Power sensor	R&S	NRP18A	101010	2018/08/21	2019/08/20
●	Power sensor	R&S	NRP18A	101011	2018/08/21	2019/08/20
●	Power Amplifier	BONN	BLWA 0160-2M	1811887	2018/11/15	2019/11/14
●	Dual Directional Coupler	Mini-Circuits	ZHDC-10-62-S+	F975001814	2018/11/15	2019/11/14
●	Attenuator	Mini-Circuits	VAT-3W2+	1819	2018/11/15	2019/11/14
●	Attenuator	Mini-Circuits	VAT-10W2+	1741	2018/11/15	2019/11/14

Note:

1. The Probe, Dipole and DAE calibration reference to the Appendix B and C.
2. Referring to KDB865664 D01, the dipole calibration interval can be extended to 3 years with justification. The dipole are also not physically damaged or repaired during the interval.

5. Measurement Uncertainty

Per KDB 865664 D01 SAR Measurement 100 MHz to 6 GHz, when the highest measured 1-g SAR within a frequency band is < 1.5 W/kg and the measured 10-g SAR within a frequency band is < 3.75 W/kg. The expanded SAR measurement uncertainty must be $\leq 30\%$, for a confidence interval of $k = 2$. If these conditions are met, extensive SAR measurement uncertainty analysis described in IEEE Std 1528-2013 is not required in SAR reports submitted for equipment approval.

Therefore, the measurement uncertainty is not required.

6. SAR Measurements System Configuration

6.1. SAR Measurement Set-up

The DASY5 system for performing compliance tests consists of the following items:

A standard high precision 6-axis robot (Stäubli RX family) with controller and software. An arm extension for accommodating the data acquisition electronics (DAE).

A dosimetric probe, i.e. an isotropic E-field probe optimized and calibrated for usage in tissue simulating liquid. The probe is equipped with an optical surface detector system.

A data acquisition electronic (DAE) which performs the signal amplification, signal multiplexing, AD-conversion, offset measurements, mechanical surface detection, collision detection, etc. The unit is battery powered with standard or rechargeable batteries. The signal is optically transmitted to the EOC.

A unit to operate the optical surface detector which is connected to the EOC.

The Electro-Optical Coupler (EOC) performs the conversion from the optical into a digital electric signal of the DAE. The EOC is connected to the DASY5 measurement server.

The DASY5 measurement server, which performs all real-time data evaluation for field measurements and surface detection, controls robot movements and handles safety operation. A computer operating Windows 2003.

DASY5 software and SEMCAD data evaluation software.

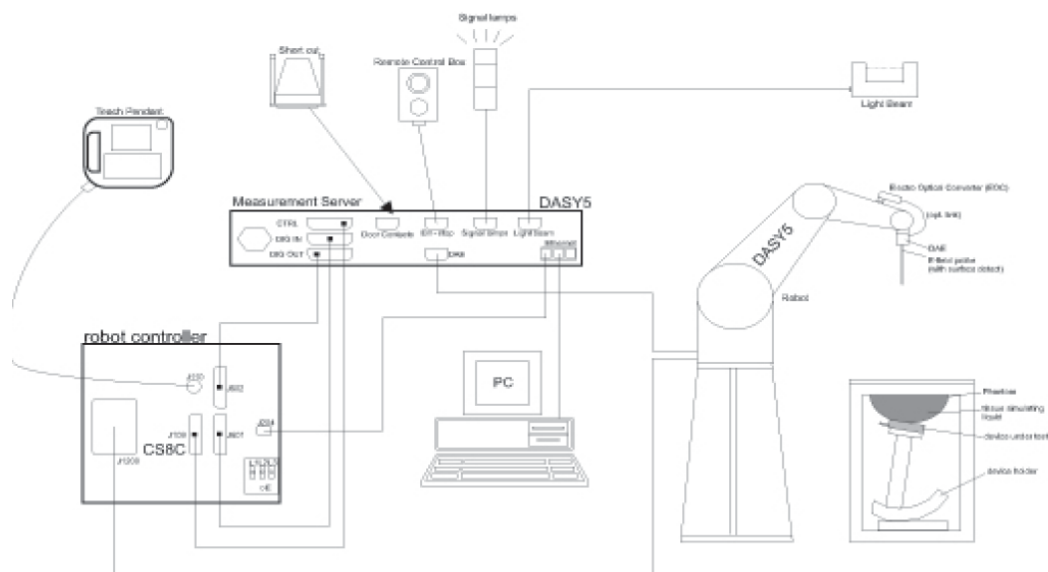
Remote control with teach panel and additional circuitry for robot safety such as warning lamps, etc.

The generic twin phantom enabling the testing of left-hand and right-hand usage.

The device holder for handheld Mobile Phones.

Tissue simulating liquid mixed according to the given recipes.

System validation dipoles allowing to validate the proper functioning of the system.



6.2. DASYS E-field Probe System

The SAR measurements were conducted with the dosimetric probe EX3DV4 (manufactured by SPEAG), designed in the classical triangular configuration and optimized for dosimetric evaluation.

● Probe Specification

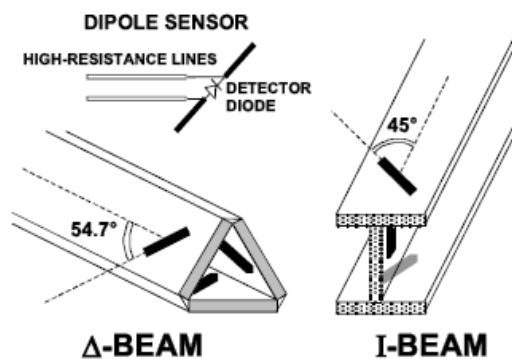
Construction	Symmetrical design with triangular core Interleaved sensors Built-in shielding against static charges PEEK enclosure material (resistant to organic solvents, e.g., DGBE)
Calibration	ISO/IEC 17025 calibration service available.
Frequency	4 MHz to 10 GHz; Linearity: ± 0.2 dB (30 MHz to 6 GHz)
Directivity	± 0.3 dB in HSL (rotation around probe axis) ± 0.5 dB in tissue material (rotation normal to probe axis)
Dynamic Range	10 μ W/g to > 100 W/kg; Linearity: ± 0.2 dB
Dimensions	Overall length: 337 mm (Tip: 20 mm) Tip diameter: 2.5 mm (Body: 12 mm) Distance from probe tip to dipole centers: 1.0 mm
Application	General dosimetry up to 6 GHz Dosimetry in strong gradient fields Compliance tests of Mobile Phones
Compatibility	DASY3, DASY4, DASY52 SAR and higher, EASY4/MRI



◆ Isotropic E-Field Probe

The isotropic E-Field probe has been fully calibrated and assessed for isotropicity, and boundary effect within a controlled environment. Depending on the frequency for which the probe is calibrated the method utilized for calibration will change.

The E-Field probe utilizes a triangular sensor arrangement as detailed in the diagram below:



6.3. Phantoms

The phantom used for all tests i.e. for both system checks and device testing, was the twin-headed "SAM Phantom", manufactured by SPEAG. The SAM twin phantom is a fiberglass shell phantom with 2mm shell thickness (except the ear region, where shell thickness increases to 6mm).

System checking was performed using the flat section, whilst Head SAR tests used the left and right head profile sections. Body SAR testing also used the flat section between the head profiles.

Phantom for compliance testing of handheld and body-mounted wireless devices in the frequency range of 30 MHz to 6 GHz. ELI is fully compatible with standard and all known tissuesimulating liquids. ELI has been optimized regarding its performance and can beintegrated into our standard phantom tables. A cover prevents evaporation ofthe liquid. Reference markings on the phantom allow installation of thecomplete setup, including all predefined phantom positions and measurementgrids, by teaching three points. The phantom is compatible with all SPEAGdosimetric probes and dipoles.



SAM-Twin Phantom



ELI Phantom

6.4. Device Holder

The device was placed in the device holder (illustrated below) that is supplied by SPEAG as an integral part of the DASY system.

The DASY device holder is designed to cope with the different positions given in the standard. It has two scales for device rotation (with respect to the body axis) and device inclination (with respect to the line between the ear reference points). The rotation centers for both scales is the ear reference point (ERP). Thus the device needs no repositioning when changing the angles.



Device holder supplied by SPEAG

7. SAR Test Procedure

7.1. Scanning Procedure

The DASY5 installation includes predefined files with recommended procedures for measurements and validation. They are read-only document files and destined as fully defined but unmeasured masks. All test positions (head or body-worn) are tested with the same configuration of test steps differing only in the grid definition for the different test positions.

The “reference” and “drift” measurements are located at the beginning and end of the batch process. They measure the field drift at one single point in the liquid over the complete procedure. The indicated drift is mainly the variation of the DUT’s output power and should vary max. $\pm 5\%$.

The “surface check” measurement tests the optical surface detection system of the DASY5 system by repeatedly detecting the surface with the optical and mechanical surface detector and comparing the results. The output gives the detecting heights of both systems, the difference between the two systems and the standard deviation of the detection repeatability. Air bubbles or refraction in the liquid due to separation of the sugar-water mixture gives poor repeatability (above $\pm 0.1\text{mm}$). To prevent wrong results tests are only executed when the liquid is free of air bubbles. The difference between the optical surface detection and the actual surface depends on the probe and is specified with each probe (It does not depend on the surface reflectivity or the probe angle to the surface within $\pm 30^\circ$.)

Area Scan

The Area Scan is used as a fast scan in two dimensions to find the area of high field values before running a detailed measurement around the hot spot. Before starting the area scan a grid spacing of 15 mm x 15 mm is set. During the scan the distance of the probe to the phantom remains unchanged. After finishing area scan, the field maxima within a range of 2 dB will be ascertained.

Zoom Scan

After the maximum interpolated values were calculated between the points in the cube, the SAR was averaged over the spatial volume (1g or 10g) using a 3D-Spline interpolation algorithm. The 3D-spline is composed of three one-dimensional splines with the “Not a knot” condition (in x, y, and z directions). The volume was then integrated with the trapezoidal algorithm.

Spatial Peak Detection

The procedure for spatial peak SAR evaluation has been implemented and can determine values of masses of 1g and 10g, as well as for user-specific masses. The DASY5 system allows evaluations that combine measured data and robot positions, such as:

- maximum search
- extrapolation
- boundary correction
- peak search for averaged SAR

During a maximum search, global and local maxima searches are automatically performed in 2-D after each Area Scan measurement with at least 6 measurement points. It is based on the evaluation of the local SAR gradient calculated by the Quadratic Shepard’s method. The algorithm will find the global maximum and all local maxima within -2 dB of the global maxima for all SAR distributions.

Extrapolation routines are used to obtain SAR values between the lowest measurement points and the inner phantom surface. The extrapolation distance is determined by the surface detection distance and the probe sensor offset. Several measurements at different distances are necessary for the extrapolation. Extrapolation routines require at least 10 measurement points in 3-D space.

They are used in the Zoom Scan to obtain SAR values between the lowest measurement points and the inner phantom surface. The routine uses the modified Quadratic Shepard’s method for extrapolation.

A Z-axis scan measures the total SAR value at the x-and y-position of the maximum SAR value found during the cube scan. The probe is moved away in z-direction from the bottom of the SAM phantom in 5mm steps.

Table 1: Area and Zoom Scan Resolutions per FCC KDB Publication 865664 D01v04

		≤ 3 GHz	> 3 GHz
Maximum distance from closest measurement point (geometric center of probe sensors) to phantom surface		5 mm \pm 1 mm	$\frac{1}{2} \cdot \delta \cdot \ln(2)$ mm \pm 0.5 mm
Maximum probe angle from probe axis to phantom surface normal at the measurement location		30° \pm 1°	20° \pm 1°
Maximum area scan spatial resolution: Δx_{Area} , Δy_{Area}		≤ 2 GHz: ≤ 15 mm 2 – 3 GHz: ≤ 12 mm	3 – 4 GHz: ≤ 12 mm 4 – 6 GHz: ≤ 10 mm
		When the x or y dimension of the test device, in the measurement plane orientation, is smaller than the above, the measurement resolution must be \leq the corresponding x or y dimension of the test device with at least one measurement point on the test device.	
Maximum zoom scan spatial resolution: Δx_{Zoom} , Δy_{Zoom}		≤ 2 GHz: ≤ 8 mm 2 – 3 GHz: ≤ 5 mm*	3 – 4 GHz: ≤ 5 mm* 4 – 6 GHz: ≤ 4 mm*
Maximum zoom scan spatial resolution, normal to phantom surface	uniform grid: $\Delta z_{Zoom}(n)$	≤ 5 mm	3 – 4 GHz: ≤ 4 mm 4 – 5 GHz: ≤ 3 mm 5 – 6 GHz: ≤ 2 mm
	graded grid	$\Delta z_{Zoom}(1)$: between 1 st two points closest to phantom surface	≤ 4 mm
		$\Delta z_{Zoom}(n>1)$: between subsequent points	$\leq 1.5 \cdot \Delta z_{Zoom}(n-1)$ mm
Minimum zoom scan volume	x, y, z	≥ 30 mm	3 – 4 GHz: ≥ 28 mm 4 – 5 GHz: ≥ 25 mm 5 – 6 GHz: ≥ 22 mm
<p>Note: δ is the penetration depth of a plane-wave at normal incidence to the tissue medium; see IEEE Std 1528-2013 for details.</p> <p>* When zoom scan is required and the <i>reported</i> SAR from the <i>area scan based 1-g SAR estimation</i> procedures of KDB Publication 447498 is ≤ 1.4 W/kg, ≤ 8 mm, ≤ 7 mm and ≤ 5 mm zoom scan resolution may be applied, respectively, for 2 GHz to 3 GHz, 3 GHz to 4 GHz and 4 GHz to 6 GHz.</p>			

7.2. Data Storage and Evaluation

Data Storage

The DASY5 software stores the acquired data from the data acquisition electronics as raw data (in microvolt readings from the probe sensors),s together with all necessary software parameters for the data evaluation (probe calibration data, liquid parameters and device frequency and modulation data) in measurement files with the extension “.DA4”. The software evaluates the desired unit and format for output each time the data is visualized or exported. This allows verification of the complete software setup even after the measurement and allows correction of incorrect parameter settings. For example, if a measurement has been performed with a wrong crest factor parameter in the device setup, the parameter can be corrected afterwards and the data can be re-evaluated.

The measured data can be visualized or exported in different units or formats, depending on the selected probe type ([V/m], [A/m], [°C], [W/kg], [mW/cm²], [dBrel], etc.). Some of these units are not available in certain situations or show meaningless results, e.g., a SAR output in a lossless media will always be zero. Raw data can also be exported to perform the evaluation with other software packages.

Data Evaluation

The SEMCAD software automatically executes the following procedures to calculate the field units from the microvolt readings at the probe connector. The parameters used in the evaluation are stored in the configuration modules of the software:

Probe parameters:	Sensitivity:	Normi, ai0, ai1, ai2
	Conversion factor:	ConvFi
	Diode compression point:	Dcpi
Device parameters:	Frequency:	f
	Crest factor:	cf
Media parameters:	Conductivity:	σ
	Density:	ρ

These parameters must be set correctly in the software. They can be found in the component documents or they can be imported into the software from the configuration files issued for the DASY5 components. In the direct measuring mode of the multimeter option, the parameters of the actual system setup are used. In the scan visualization and export modes, the parameters stored in the corresponding document files are used.

The first step of the evaluation is a linearization of the filtered input signal to account for the compression characteristics of the detector diode. The compensation depends on the input signal, the diode type and the DC-transmission factor from the diode to the evaluation electronics. If the exciting field is pulsed, the crest factor of the signal must be known to correctly compensate for peak power. The formula for each channel can be given as:

$$V_i = U_i + U_i^2 \cdot \frac{cf}{dcp_i}$$

Vi:	compensated signal of channel (i = x, y, z)
Ui:	input signal of channel (i = x, y, z)
cf:	crest factor of exciting field (DASY parameter)
dcp _i :	diode compression point (DASY parameter)

From the compensated input signals the primary field data for each channel can be evaluated:

$$E - \text{fieldprobes} : \quad E_i = \sqrt{\frac{V_i}{Norm_i \cdot ConvF}}$$

$$H - \text{fieldprobes} : \quad H_i = \sqrt{V_i} \cdot \frac{a_{i0} + a_{i1}f + a_{i2}f^2}{f}$$

Vi:	compensated signal of channel (i = x, y, z)
Normi:	sensor sensitivity of channel (i = x, y, z), [mV/(V/m) ²] for E-field Probes
ConvF:	sensitivity enhancement in solution
aij:	sensor sensitivity factors for H-field probes
f:	carrier frequency [GHz]
Ei:	electric field strength of channel i in V/m
Hi:	magnetic field strength of channel i in A/m

The RSS value of the field components gives the total field strength (Hermitian magnitude):

$$E_{tot} = \sqrt{E_x^2 + E_y^2 + E_z^2}$$

The primary field data are used to calculate the derived field units.

$$SAR = E_{tot}^2 \cdot \frac{\sigma}{\rho \cdot 1'000}$$

SAR: local specific absorption rate in W/kg
Etot: total field strength in V/m
 σ : conductivity in [mho/m] or [Siemens/m]
 ρ : equivalent tissue density in g/cm³

Note that the density is normally set to 1 (or 1.06), to account for actual brain density rather than the density of the simulation liquid.

8. Position of the wireless device in relation to the phantom

8.1. Head Position

The wireless device define two imaginary lines on the handset, the vertical centreline and the horizontal line, for the handset in vertical orientation as shown in Figures 5a and 5b.

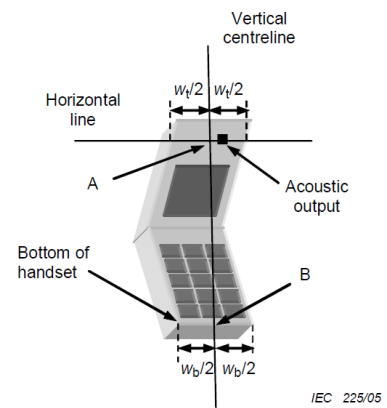
The vertical centreline passes through two points on the front side of the handset: the midpoint of the width W_t of the handset at the level of the acoustic output (point A in Figures 5a and 5b), and the midpoint of the width W_b of the bottom of the handset (point B).

The horizontal line is perpendicular to the vertical centreline and passes through the centre of the acoustic output (see Figures 5a and 5b). The two lines intersect at point A.

Note that for many handsets, point A coincides with the centre of the acoustic output. However, the acoustic output may be located elsewhere on the horizontal line. Also note that the vertical centreline is not necessarily parallel to the front face of the handset (see Figure 5b), especially for clam-shell handsets, handsets with flip cover pieces, and other irregularly shaped handsets.



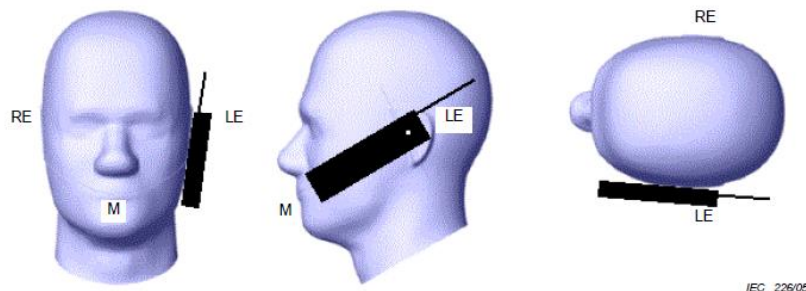
Figures 5a



Figures 5b

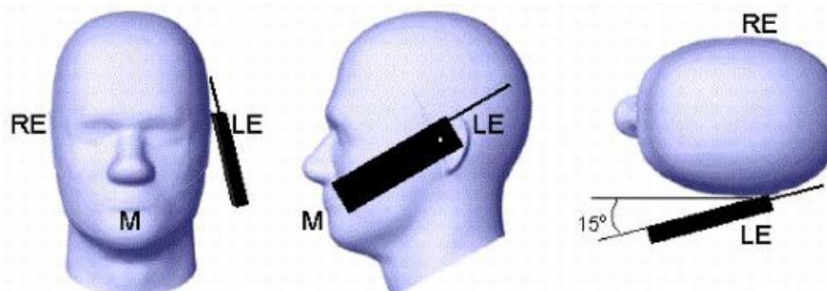
- W_t Width of the handset at the level of the acoustic
- W_b Width of the bottom of the handset
- A Midpoint of the width w_t of the handset at the level of the acoustic output
- B Midpoint of the width w_b of the bottom of the handset

Cheek position



Picture 2 Cheek position of the wireless device on the left side of SAM

Tilt position

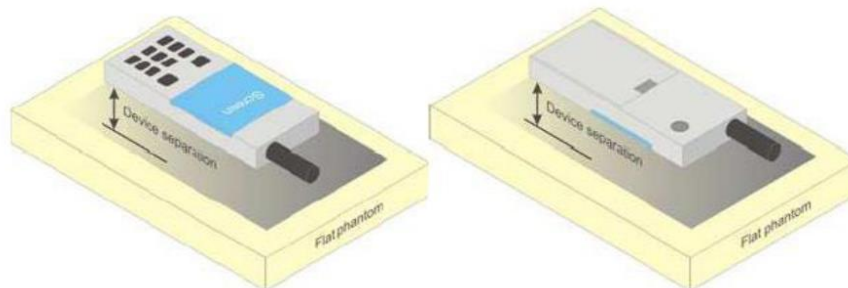


Picture 3 Tilt position of the wireless device on the left side of SAM

8.2. Body Position

Devices that support transmission while used with body-worn accessories must be tested for body-worn accessory SAR compliance, typically according to the smallest test separation distance required for the group of body-worn accessories with similar operating and exposure characteristics.

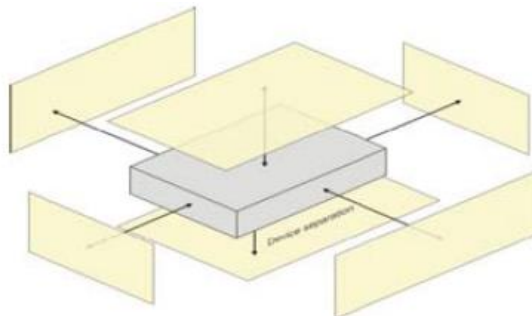
Devices that are designed to operate on the body of users using lanyards and straps or without requiring additional body-worn accessories must be tested for SAR compliance using a conservative minimum test separation distance $\leq 5\text{mm}$ to support compliance.



Picture 4 Test positions for body-worn devices

8.3. Hotspot Mode Exposure conditions

The hotspot mode and body-worn accessory SAR test configurations may overlap for handsets. When the same wireless mode transmission configurations for voice and data are required for SAR measurements, the more conservative configuration with a smaller separation distance should be tested for the overlapping SAR configurations. This typically applies to the back and front surfaces of a handset when SAR is required for both hotspot mode and body-worn accessory exposure conditions. Depending on the form factor and dimensions of a device, the test separation distance used for hotspot mode SAR measurement is either 10 mm or that used in the body-worn accessory configuration, whichever is less for devices with dimension $> 9\text{ cm} \times 5\text{ cm}$. For smaller devices with dimensions $\leq 9\text{ cm} \times 5\text{ cm}$ because of a greater potential for next to body use a test separation of $\leq 5\text{ mm}$ must be used.



Picture 5 Test positions for Hotspot Mode

9. Dielectric Property Measurements & System Check

9.1. Tissue Dielectric Parameters

The temperature of the tissue-equivalent medium used during measurement must also be within 18°C to 25°C and within $\pm 2^\circ\text{C}$ of the temperature when the tissue parameters are characterized.

The dielectric parameters must be measured before the tissue-equivalent medium is used in a series of SAR measurements. The parameters should be re-measured after each 3-4 days of use; or earlier if the dielectric parameters can become out of tolerance; for example, when the parameters are marginal at the beginning of the measurement series.

The dielectric constant (ϵ_r) and conductivity (σ) of typical tissue-equivalent media recipes are expected to be within $\pm 5\%$ of the required target values; but for SAR measurement systems that have implemented the SAR error compensation algorithms documented in IEEE Std 1528-2013, to automatically compensate the measured SAR results for deviations between the measured and required tissue dielectric parameters, the tolerance for ϵ_r and σ may be relaxed to $\pm 10\%$. This is limited to frequencies ≤ 3 GHz.

Tissue Dielectric Parameters

FCC KDB 865664 D01 SAR Measurement 100 MHz to 6 GHz

Tissue dielectric parameters for Head and Body				
Target Frequency (MHz)	Head		Body	
	ϵ_r	$\sigma(\text{S/m})$	ϵ_r	$\sigma(\text{S/m})$
750	41.9	0.89	55.5	0.96
835	41.5	0.90	55.2	0.97
1750	40.1	1.37	53.4	1.49
1800-2000	40.0	1.40	53.3	1.52
2450	39.2	1.80	52.7	1.95
2600	39.0	1.96	52.5	2.16

IEEE Std 1528-2013

Refer to Table 3 within the IEEE Std 1528-2013

Dielectric Property Measurements Results:

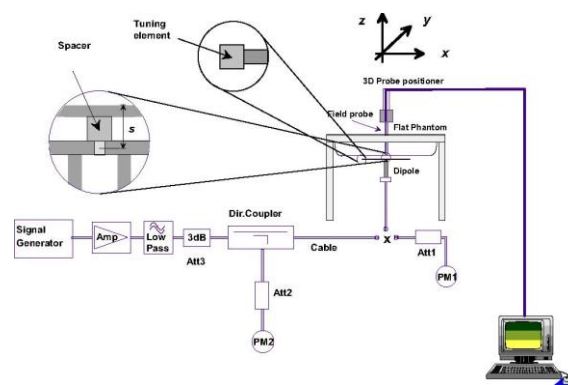
Dielectric performance of Head tissue simulating liquid									
Frequency (MHz)	ϵ_r		σ (S/m)		Delta (ϵ_r)	Delta (σ)	Limit	Temp (°C)	Date
	Target	Measured	Target	Measured					
835	41.50	42.50	0.90	0.93	2.41%	3.56%	±5%	22.5	2019/7/26
1750	40.10	41.93	1.37	1.38	4.56%	0.36%	±5%	22.5	2019/7/30
1900	40.00	41.67	1.40	1.47	4.16%	4.71%	±5%	22.5	2019/7/29
2450	39.20	40.96	1.80	1.84	4.48%	2.11%	±5%	22.5	2019/7/31
2600	39.00	40.63	1.96	1.97	4.18%	0.51%	±5%	22.5	2019/7/30

9.2. System Check

SAR system verification is required to confirm measurement accuracy, according to the tissue dielectric media, probe calibration points and other system operating parameters required for measuring the SAR of a test device. The system verification must be performed for each frequency band and within the valid range of each probe calibration point required for testing the device. The same SAR probe(s) and tissue-equivalent media combinations used with each specific SAR system for system verification must be used for device testing. When multiple probe calibration points are required to cover substantially large transmission bands, independent system verifications are required for each probe calibration point. A system verification must be performed before each series of SAR measurements using the same probe calibration point and tissue-equivalent medium. Additional system verification should be considered according to the conditions of the tissue-equivalent medium and measured tissue dielectric parameters, typically every three to four days when the liquid parameters are re-measured or sooner when marginal liquid parameters are used at the beginning of a series of measurements.

System Performance Check Measurement Conditions:

- ◆ The measurements were performed in the flat section of the TWIN SAM or ELI phantom, shell thickness: 2.0 ± 0.2 mm (bottom plate) filled with Body or Head simulating liquid of the following parameters.
- ◆ The depth of tissue-equivalent liquid in a phantom must be ≥ 15.0 cm for SAR measurements ≤ 3 GHz and ≥ 10.0 cm for measurements > 3 GHz.
- ◆ The DASY system with an E-Field Probe was used for the measurements.
- ◆ The dipole was mounted on the small tripod so that the dipole feed point was positioned below the center marking of the flat phantom section and the dipole was oriented parallel to the body axis (the long side of the phantom). The standard measuring distance was 10 mm (above 1 GHz) and 15 mm (below 1 GHz) from dipole center to the simulating liquid surface.
- ◆ The coarse grid with a grid spacing of 15 mm was aligned with the dipole.
For 5 GHz band - The coarse grid with a grid spacing of 10 mm was aligned with the dipole.
- ◆ Special 7x7x7 (below 3 GHz) and/or 8x8x7 (above 3 GHz) fine cube was chosen for the cube.
- ◆ The results are normalized to 1 W input power.



System Performance Check Setup

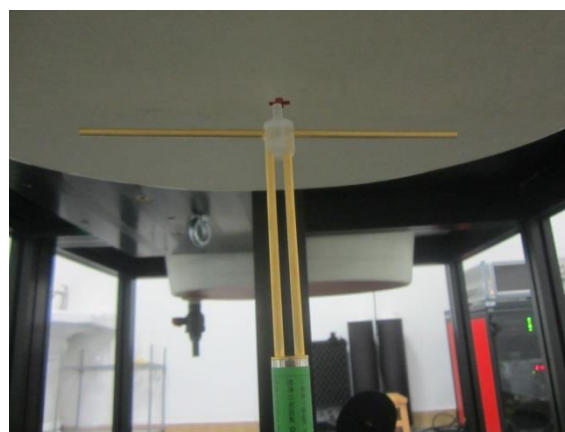


Photo of Dipole Setup

System Check Result:

The 1-g and 10-g SAR measured with a reference dipole, using the required tissue-equivalent medium at the test frequency, must be within $\pm 10\%$ of the manufacturer calibrated dipole SAR target.

Head											
Frequency (MHz)	1g SAR			10g SAR			Delta (1g)	Delta (10g)	Limit	Temp (°C)	Date
	Target 1W	Normalize to 1W	Measured 250mW	Target 1W	Normalize to 1W	Measured 250mW					
835	9.51	9.92	2.48	6.15	6.52	1.63	4.31%	6.02%	$\pm 10\%$	22.5	2019/7/26
1750	36.60	36.24	9.06	19.40	19.44	4.86	-0.98%	0.21%	$\pm 10\%$	22.5	2019/7/30
1900	40.30	41.60	10.40	21.10	21.68	5.42	3.23%	2.75%	$\pm 10\%$	22.5	2019/7/29
2450	51.50	50.40	12.60	24.10	23.44	5.86	-2.14%	-2.74%	$\pm 10\%$	22.5	2019/7/31
2600	55.60	57.60	14.40	25.00	26.04	6.51	3.60%	4.16%	$\pm 10\%$	22.5	2019/7/30

Plots of System Performance Check

System Performance Check-Head 835MHz

DUT: D835V2; Type: D835V2; Serial: 4d238

Date: 2019-07-26

Communication System: UID 0, CW (0); Frequency: 835 MHz

Medium parameters used: $f = 835$ MHz; $\sigma = 0.932$ S/m; $\epsilon_r = 42.5$; $\rho = 1000$ kg/m³

Phantom section: Flat Section

DASY5 Configuration:

- Probe: EX3DV4 - SN7494; ConvF(10.41, 10.41, 10.41); Calibrated: 3/25/2019;
- Sensor-Surface: 1.4mm (Mechanical Surface Detection), $z = 1.0, 31.0$
- Electronics: DAE4 Sn1549; Calibrated: 3/19/2018
- Phantom: Twin-SAM V8.0; Type: QD 000 P41 AA; Serial: 1947
- DASY52 52.10.0(1446); SEMCAD X 14.6.10(7417)

Head/d=15mm, Pin=250mW/Area Scan (41x101x1): Interpolated grid: $dx=1.500$ mm, $dy=1.500$ mm

Maximum value of SAR (interpolated) = 3.51 W/kg

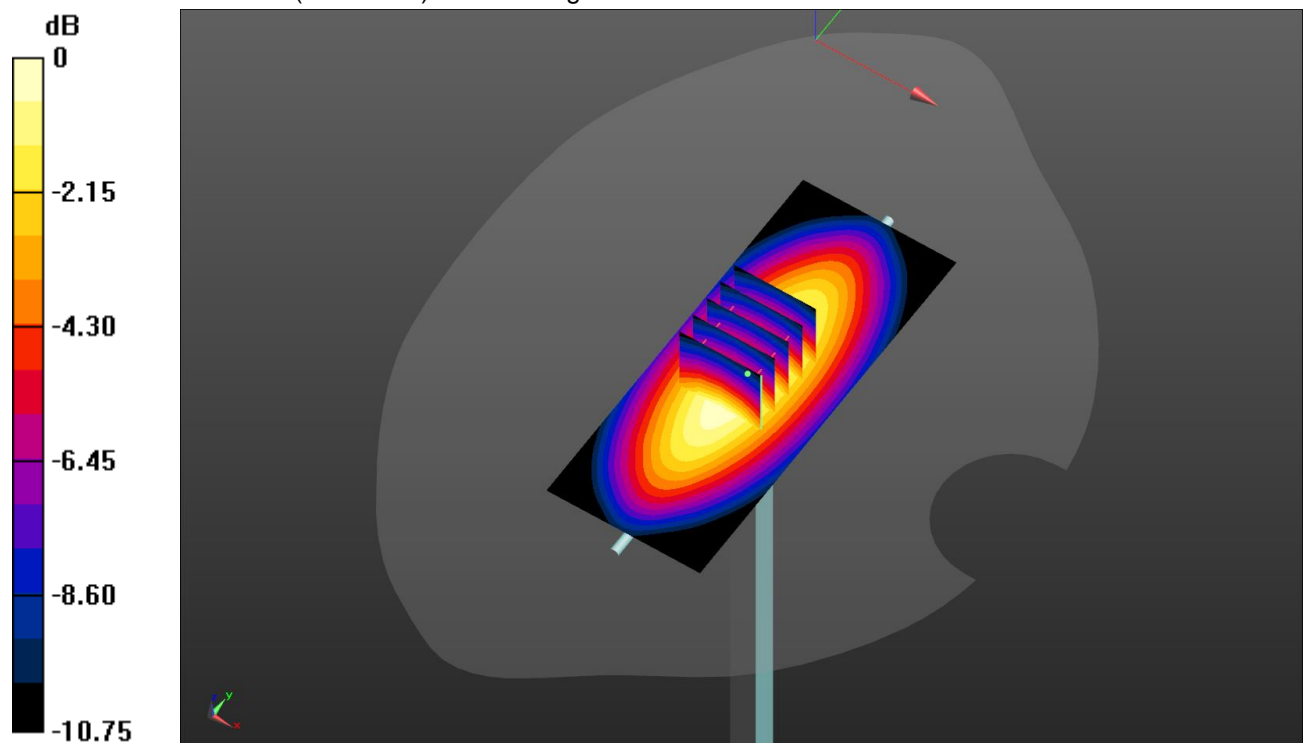
Head/d=15mm, Pin=250mW/Zoom Scan (5x5x7)/Cube 0: Measurement grid: $dx=8$ mm, $dy=8$ mm, $dz=5$ mm

Reference Value = 66.38 V/m; Power Drift = -0.19 dB

Peak SAR (extrapolated) = 3.78 W/kg

SAR(1 g) = 2.48 W/kg; SAR(10 g) = 1.63 W/kg

Maximum value of SAR (measured) = 3.34 W/kg



System Performance Check-Head 1750MHz

DUT: D1750V2; Type: D1750V2; Serial: 1164

Date: 2019-07-30

Communication System: UID 0, CW (0); Frequency: 1750 MHz

Medium parameters used: $f = 1750$ MHz; $\sigma = 1.375$ S/m; $\epsilon_r = 41.933$; $\rho = 1000$ kg/m³

Phantom section: Flat Section

DASY5 Configuration:

- Probe: EX3DV4 - SN7494; ConvF(8.91, 8.91, 8.91); Calibrated: 3/25/2019;
- Sensor-Surface: 1.4mm (Mechanical Surface Detection), $z = 1.0, 31.0$
- Electronics: DAE4 Sn1549; Calibrated: 3/19/2018
- Phantom: Twin-SAM V8.0; Type: QD 000 P41 AA; Serial: 1947
- DASY52 52.10.0(1446); SEMCAD X 14.6.10(7417)

Head/d=10mm,Pin=250mW/Area Scan (41x61x1): Interpolated grid: $dx=1.500$ mm, $dy=1.500$ mm

Maximum value of SAR (interpolated) = 14.1 W/kg

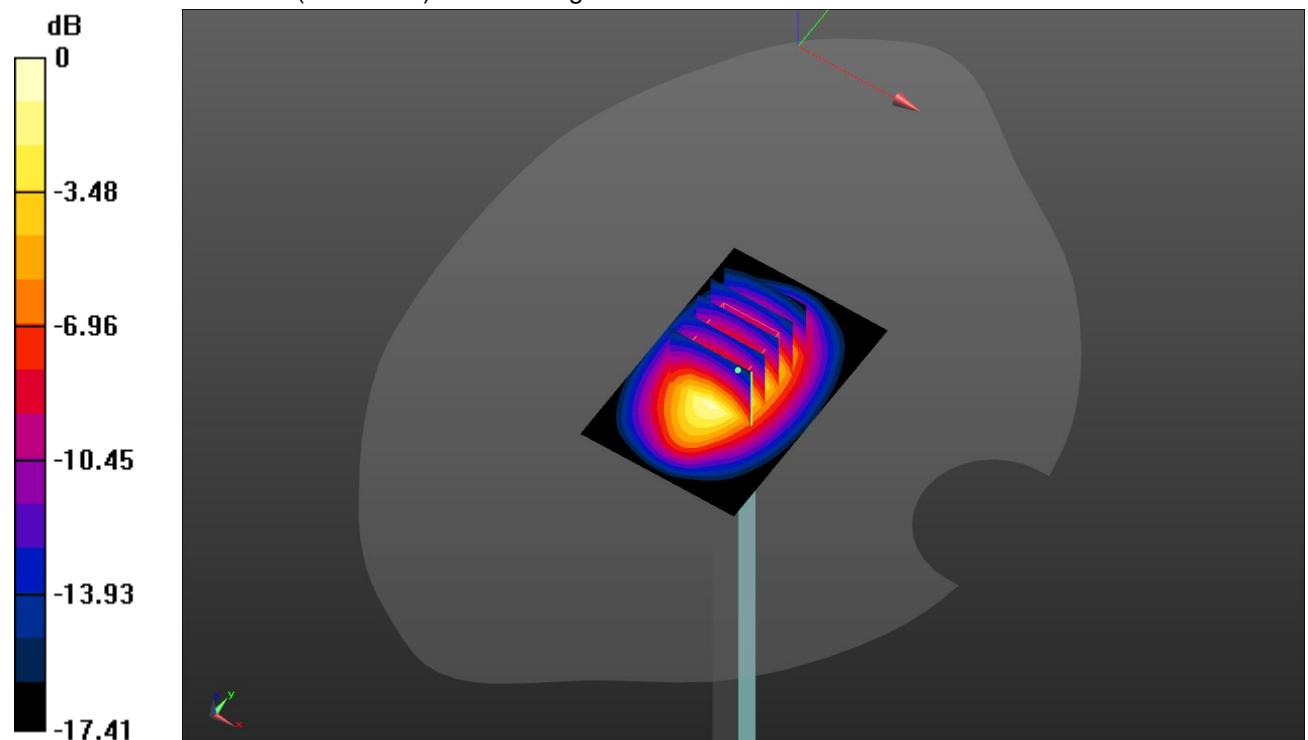
Head/d=10mm,Pin=250mW/Zoom Scan (5x5x7)/Cube 0: Measurement grid: $dx=8$ mm, $dy=8$ mm, $dz=5$ mm

Reference Value = 103.5 V/m; Power Drift = 0.02 dB

Peak SAR (extrapolated) = 16.5 W/kg

SAR(1 g) = 9.06 W/kg; SAR(10 g) = 4.86 W/kg

Maximum value of SAR (measured) = 13.8 W/kg



System Performance Check-Head 1900MHz

DUT: D1900V2; Type: D1900V2; Serial: 5d226
Date:2019-07-29

Communication System: UID 0, CW (0); Frequency: 1900 MHz

Medium parameters used: $f = 1900$ MHz; $\sigma = 1.466$ S/m; $\epsilon_r = 41.665$; $\rho = 1000$ kg/m³

Phantom section: Flat Section

DASY5 Configuration:

- Probe: EX3DV4 - SN7494; ConvF(8.57, 8.57, 8.57); Calibrated: 3/25/2019;
- Sensor-Surface: 1.4mm (Mechanical Surface Detection), $z = 1.0, 31.0$
- Electronics: DAE4 Sn1549; Calibrated: 3/19/2018
- Phantom: Twin-SAM V8.0; Type: QD 000 P41 AA; Serial: 1947
- DASY52 52.10.0(1446); SEMCAD X 14.6.10(7417)

Head/d=10mm,Pin=250mW/Area Scan (41x61x1): Interpolated grid: $dx=1.500$ mm, $dy=1.500$ mm

Maximum value of SAR (interpolated) = 17.1 W/kg

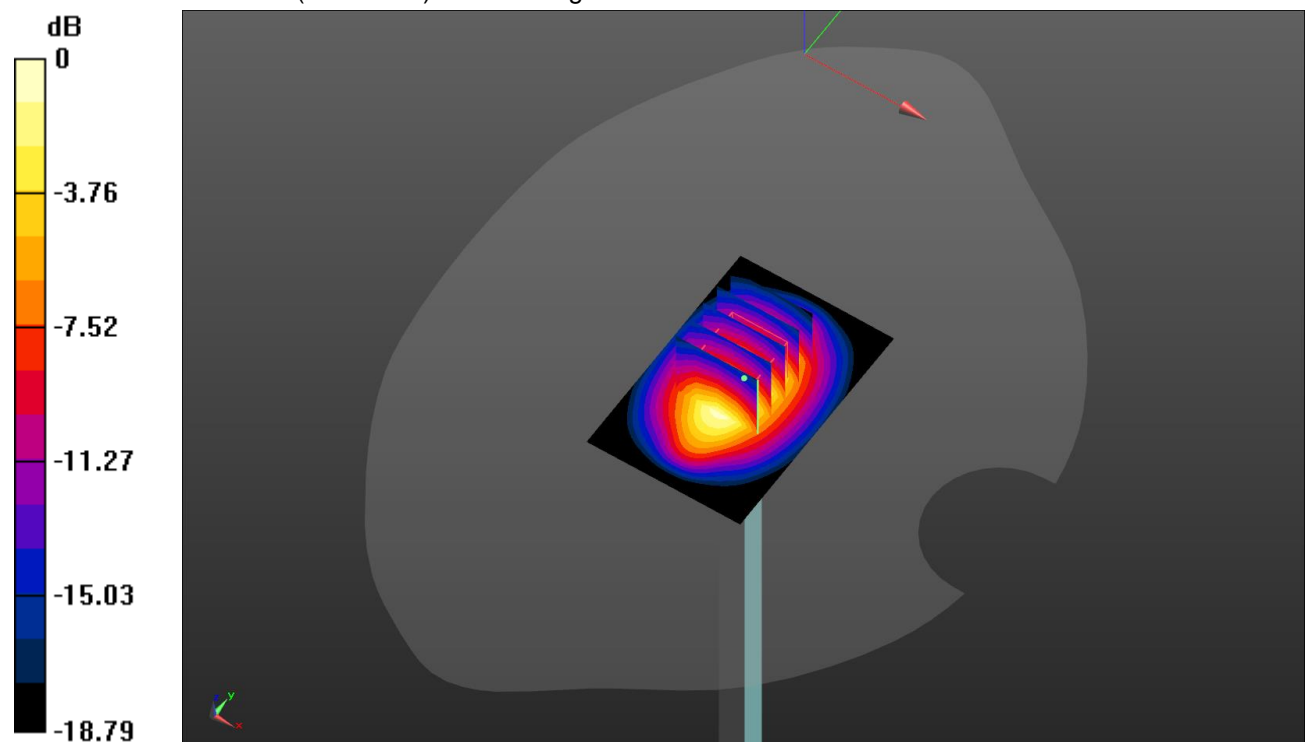
Head/d=10mm,Pin=250mW/Zoom Scan (5x5x7)/Cube 0: Measurement grid: $dx=8$ mm, $dy=8$ mm, $dz=5$ mm

Reference Value = 112.4 V/m; Power Drift = -0.17 dB

Peak SAR (extrapolated) = 19.5 W/kg

SAR(1 g) = 10.4 W/kg; SAR(10 g) = 5.42 W/kg

Maximum value of SAR (measured) = 16.1 W/kg



SystemPerformanceCheck-Head 2450MHz

DUT: D2450V2; Type: D2450V2; Serial: 1009

Date:2019-07-31

Communication System: UID 0, CW (0); Frequency: 2450 MHz

Medium parameters used: $f = 2450$ MHz; $\sigma = 1.838$ S/m; $\epsilon_r = 40.956$; $\rho = 1000$ kg/m³

Phantom section: Flat Section

DASY5 Configuration:

- Probe: EX3DV4 - SN7494; ConvF(7.90, 7.90, 7.90); Calibrated: 3/25/2019;
- Sensor-Surface: 1.4mm (Mechanical Surface Detection), $z = 1.0, 31.0$
- Electronics: DAE4 Sn1549; Calibrated: 3/19/2018
- Phantom: Twin-SAM V8.0; Type: QD 000 P41 AA; Serial: 1947
- DASY52 52.10.0(1446); SEMCAD X 14.6.10(7417)

Head/d=10mm,Pin=250mW/Area Scan (41x61x1): Interpolated grid: $dx=1.200$ mm, $dy=1.200$ mm

Maximum value of SAR (interpolated) = 21.1 W/kg

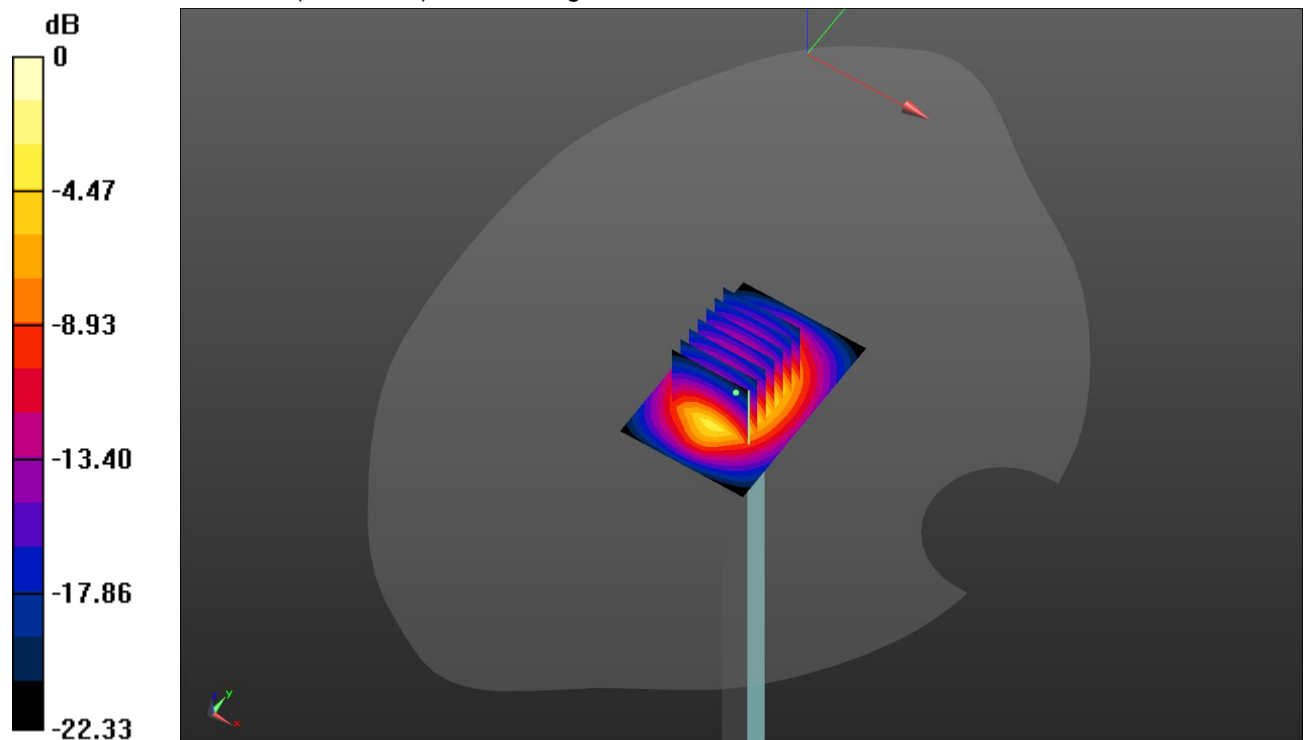
Head/d=10mm,Pin=250mW/Zoom Scan (7x7x7)/Cube 0: Measurement grid: $dx=5$ mm, $dy=5$ mm, $dz=5$ mm

Reference Value = 110.0 V/m; Power Drift = 0.00 dB

Peak SAR (extrapolated) = 26.2 W/kg

SAR(1 g) = 12.6 W/kg; SAR(10 g) = 5.86 W/kg

Maximum value of SAR (measured) = 20.8 W/kg



SystemPerformanceCheck-Head 2600MHz

DUT: D2600V2; Type: D2600V2; Serial: 1150

Date: 2019-07-30

Communication System: UID 0, CW (0); Frequency: 2600 MHz

Medium parameters used: $f = 2600$ MHz; $\sigma = 1.97$ S/m; $\epsilon_r = 40.632$; $\rho = 1000$ kg/m³

Phantom section: Flat Section

DASY5 Configuration:

- Probe: EX3DV4 - SN7494; ConvF(7.69, 7.69, 7.69); Calibrated: 3/25/2019;
- Sensor-Surface: 1.4mm (Mechanical Surface Detection), $z = 1.0, 31.0$
- Electronics: DAE4 Sn1549; Calibrated: 3/19/2019
- Phantom: Twin-SAM V8.0; Type: QD 000 P41 AA; Serial: 1947
- DASY52 52.10.0(1446); SEMCAD X 14.6.10(7417)

Head/d=10mm,Pin=250mW/Area Scan (41x51x1): Interpolated grid: $dx=1.200$ mm, $dy=1.200$ mm

Maximum value of SAR (interpolated) = 25.4 W/kg

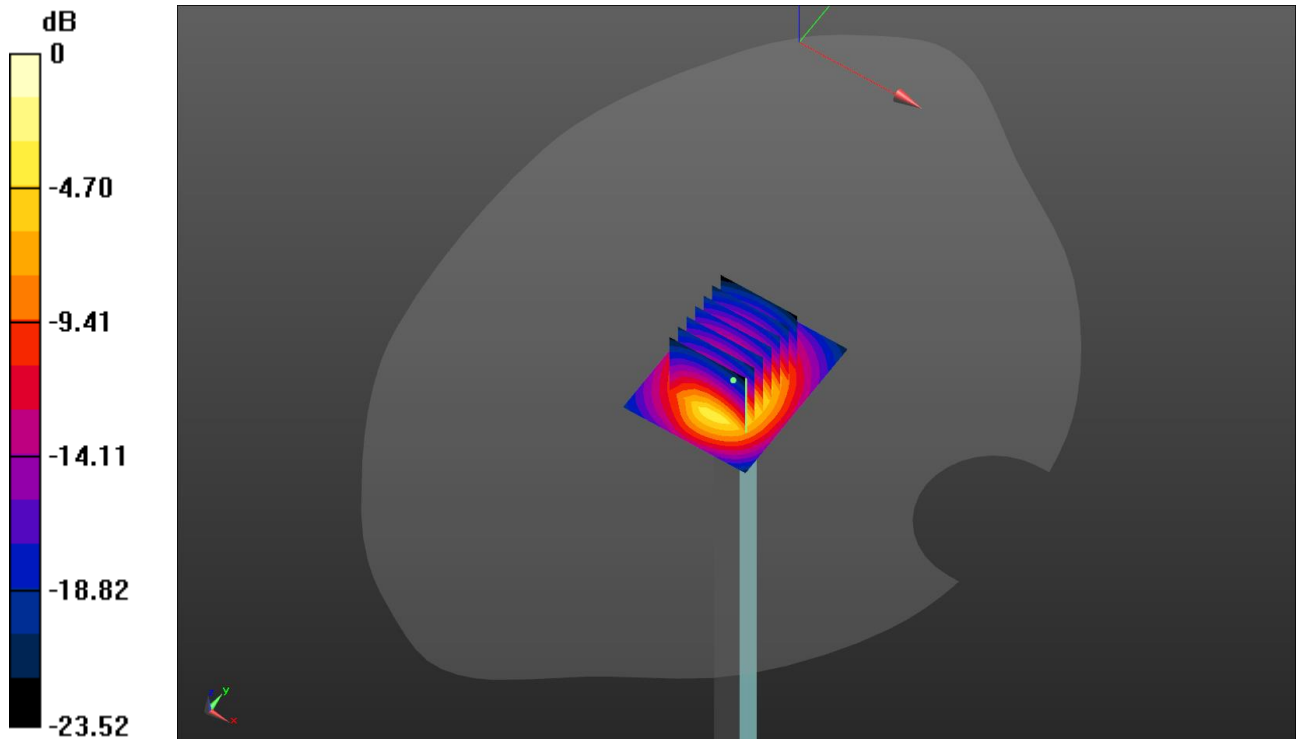
Head/d=10mm,Pin=250mW/Zoom Scan (7x7x7)/Cube 0: Measurement grid: $dx=5$ mm, $dy=5$ mm, $dz=5$ mm

Reference Value = 115.2 V/m; Power Drift = -0.00 dB

Peak SAR (extrapolated) = 31.2 W/kg

SAR(1 g) = 14.4 W/kg; SAR(10 g) = 6.51 W/kg

Maximum value of SAR (measured) = 24.9 W/kg



10. SAR Exposure Limits

SAR assessments have been made in line with the requirements of FCC 47 CFR § 2.1093.

Type Exposure	Limit (W/kg)	
	General Population/ Uncontrolled Exposure Environment	Occupational/ Controlled Exposure Environment
Spatial Average SAR (whole body)	0.08	0.4
Spatial Peak SAR (1g cube tissue for head and trunk)	1.6	8.0
Spatial Peak SAR (10g for limb)	4.0	20.0

Population/Uncontrolled Environments: are defined as locations where there is the exposure of individual who have no knowledge or control of their exposure.

Occupational/Controlled Environments: are defined as locations where there is exposure that may be incurred by people who are aware of the potential for exposure (i.e. as a result of employment or occupation).

11. Conducted Power Measurement Results

11.1. GSM

1. Per KDB 447498 D01, the maximum output power channel is used for SAR testing and further SAR test reduction.
2. Per KDB 941225 D01, considering the possibility of e.g. 3rd party VoIP operation for Head and Body-worn SAR test reduction for GSM and GPRS modes is determined by the source-base time-averaged output power including tune-up tolerance. The mode with highest specified time-averaged output power should be tested for SAR compliance in the applicable exposure conditions. For modes with the same specified maximum output power and tolerance, the higher number time-slot configuration should be tested.
3. Per KDB941225 D01, for hotspot SAR test reduction for GPRS modes is determined by the source-based time-averaged output power including tune-up tolerance, For modes with the same specified maximum output power and tolerance, the higher number time-slot configuration should be tested.

Mode: GSM850		Burst Average Power (dBm)			Division Factors	Frame-Average Power (dBm)		
		CH128	CH190	CH251		CH128	CH190	CH251
		824.2MHz	836.6MHz	848.8MHz		824.2MHz	836.6MHz	848.8MHz
GSM Voice		32.25	32.23	32.25	-9.03	23.22	23.20	23.22
GPRS (GMSK)	1TXslot	32.15	32.11	32.12	-9.03	23.12	23.08	23.09
	2TXslots	31.67	31.62	31.63	-6.02	25.65	25.60	25.61
	3TXslots	30.23	30.16	30.15	-4.26	25.97	25.90	25.89
	4TXslots	28.93	28.88	28.87	-3.01	25.92	25.87	25.86
EGPRS (8PSK)	1TXslot	27.45	27.24	27.14	-9.03	18.42	18.21	18.11
	2TXslots	26.48	26.58	26.60	-6.02	20.46	20.56	20.58
	3TXslots	24.57	24.54	24.38	-4.26	20.31	20.28	20.12
	4TXslots	23.27	23.35	23.27	-3.01	20.26	20.34	20.26
Mode: PCS1900		Burst Average Power (dBm)			Division Factors	Frame-Average Power (dBm)		
		CH512	CH661	CH810		CH512	CH661	CH810
		1850.2MHz	1880MHz	1909.8MHz		1850.2MHz	1880MHz	1909.8MHz
GSM Voice		28.46	29.27	30.01	-9.03	19.43	20.24	20.98
GPRS (GMSK)	1TXslot	28.09	28.84	29.52	-9.03	19.06	19.81	20.49
	2TXslots	27.38	28.39	29.11	-6.02	21.36	22.37	23.09
	3TXslots	26.77	27.14	27.82	-4.26	22.51	22.88	23.56
	4TXslots	24.55	25.60	26.21	-3.01	21.54	22.59	23.20
EGPRS (8PSK)	1TXslot	24.49	24.87	25.45	-9.03	15.46	15.84	16.42
	2TXslots	23.87	24.37	24.72	-6.02	17.85	18.35	18.70
	3TXslots	22.42	22.24	22.54	-4.26	18.16	17.98	18.28
	4TXslots	20.21	20.79	20.77	-3.01	17.20	17.78	17.76

Note:

1) Division Factors

To Frame-Average Power, the division factor is as follows:

1TX-slot = 1 transmit time slot out of 8 time slots=> Burst Average Power divided by (8/1) => -9.03dB

2TX-slots = 2 transmit time slots out of 8 time slots=> Burst Average Power divided by (8/2) => -6.02dB

3TX-slots = 3 transmit time slots out of 8 time slots=> Burst Average Power divided by (8/3) => -4.26dB

4TX-slots = 4 transmit time slots out of 8 time slots=> Burst Average Power divided by (8/4) => -3.01dB

11.2. WCDMA

1. The following tests were conducted according to the test requirements outlines in 3GPP TS34.121 specification.
2. The procedures in KDB 941225 D01 are applied for 3GPP Rel. 6 HSPA to configure the device in the required sub-test mode to determine SAR test exclusion

A summary of these settings are illustrated below:

HSDPA Setup Configuration:

- a) The EUT was connected to base station RS CMU200 referred to the setup configuration
- b) The RF path losses were compensated into the measurements
- c) A call was established between EUT and base station with following setting:
 - i. Set Gain Factors (β_c and β_d) and parameters were set according to each specific sub-test in the following table, C10.1.4, Quoted from the TS 34.121
 - ii. Set RMC 12.2Kbps + HSDPA mode
 - iii. Set Cell Power=-86dBm
 - iv. Set HS-DSCH Configuration Type to FRC (H-set 1, QPSK)
 - v. Select HSDPA uplink parameters
 - vi. Set Delta ACK, Delta NACK and Delta CQI=8
 - vii. Set Ack-Nack repetition Factor to 3
 - viii. Set CQI Feedback Cycle (K) to 4ms
 - ix. Set CQI repetition factor to 2
 - x. Power ctrl mode= all up bits
- d) The transmitter maximum output power was recorded.

Table C.10.1.4: β values for transmitter characteristics tests with HS-DPCCH

Sub-test	β_c	β_d	β_d (SF)	β_c/β_d	β_{HS} (Note 1, Note 2)	CM (dB) (Note 3)	MPR (dB) (Note 3)
1	2/15	15/15	64	2/15	4/15	0.0	0.0
2	12/15 (Note 4)	15/15 (Note 4)	64	12/15 (Note 4)	24/15	1.0	0.0
3	15/15	8/15	64	15/8	30/15	1.5	0.5
4	15/15	4/15	64	15/4	30/15	1.5	0.5

Note 1: Δ_{ACK} , Δ_{NACK} and $\Delta_{CQI} = 30/15$ with $\beta_{HS} = 30/15 * \beta_c$.

Note 2: For the HS-DPCCH power mask requirement test in clause 5.2C, 5.7A, and the Error Vector Magnitude (EVM) with HS-DPCCH test in clause 5.13.1A, and HSDPA EVM with phase discontinuity in clause 5.13.1AA, Δ_{ACK} and $\Delta_{NACK} = 30/15$ with $\beta_{HS} = 30/15 * \beta_c$, and $\Delta_{CQI} = 24/15$ with $\beta_{HS} = 24/15 * \beta_c$.

Note 3: CM = 1 for $\beta_c/\beta_d = 12/15$, $\beta_{HS}/\beta_c = 24/15$. For all other combinations of DPCCH, DPCCCH and HS-DPCCH the MPR is based on the relative CM difference. This is applicable for only UEs that support HSDPA in release 6 and later releases.

Note 4: For subtest 2 the β_c/β_d ratio of 12/15 for the TFC during the measurement period (TF1, TF0) is achieved by setting the signalled gain factors for the reference TFC (TF1, TF1) to $\beta_c = 11/15$ and $\beta_d = 15/15$.

Setup Configuration

HSUPA Setup Configuration:

- a) The EUT was connected to base station RS CMU200 referred to the setup configuration
- b) The RF path losses were compensated into the measurements
- c) A call was established between EUT and base station with following setting:
 - i. Call configs = 5.2b, 5.9b, 5.10b, and 5.13.2B with QPSK
 - ii. Set Gain Factors (β_c and β_d) and parameters (AG index) were set according to each specific sub-test in the following table, C11.1.3, Quoted from the TS 34.121
 - iii. Set Cell Power=-86dBm
 - iv. Set channel type= 12.2Kbps + HSPA mode
 - v. Set UE Target power
 - vi. Set Ctrl mode=Alternating bits
 - vii. Set and observe the E-TFCl
 - viii. Confirm that E-TFCl is equal the target E-TFCl of 75 for Sub-test 1, and other subtest's E-TFCl
- d) The transmitter maximum output power was recorded.

Table C.11.1.3: β values for transmitter characteristics tests with HS-DPCCH and E-DCH

Sub-test	β_c	β_d	β_d (SF)	β_c/β_d	β_{HS} (Note 1)	β_{ec}	β_{ed} (Note 5) (Note 6)	β_{ed} (SF)	β_{ed} (Codes)	CM (dB) (Note 2)	MPR (dB) (Note 2)	AG Index (Note 6)	E-TFCI
1	11/15 (Note 3)	15/15 (Note 3)	64	11/15 (Note 3)	22/15	209/25	1309/225	4	1	1.0	0.0	20	75
2	6/15	15/15	64	6/15	12/15	12/15	94/75	4	1	3.0	2.0	12	67
3	15/15	9/15	64	15/9	30/15	30/15	β_{ed1} : 47/15 β_{ed2} : 47/15	4 4	2	2.0	1.0	15	92
4	2/15	15/15	64	2/15	4/15	2/15	56/75	4	1	3.0	2.0	17	71
5	15/15 (Note 4)	15/15 (Note 4)	64	15/15 (Note 4)	30/15	24/15	134/15	4	1	1.0	0.0	21	81

Note 1: $\Delta_{ACK}, \Delta_{NACK}$ and $\Delta_{CQI} = 30/15$ with $\beta_{HS} = 30/15 * \beta_c$.

Note 2: CM = 1 for $\beta_c/\beta_d = 12/15, \beta_{HS}/\beta_c = 24/15$. For all other combinations of DPDCH, DPCCH, HS-DPCCH, E-DPDCH and E-DPCCH the MPR is based on the relative CM difference.

Note 3: For subtest 1 the β_c/β_d ratio of 11/15 for the TFC during the measurement period (TF1, TF0) is achieved by setting the signalled gain factors for the reference TFC (TF1, TF1) to $\beta_c = 10/15$ and $\beta_d = 15/15$.

Note 4: For subtest 5 the β_c/β_d ratio of 15/15 for the TFC during the measurement period (TF1, TF0) is achieved by setting the signalled gain factors for the reference TFC (TF1, TF1) to $\beta_c = 14/15$ and $\beta_d = 15/15$.

Note 5: In case of testing by UE using E-DPDCH Physical Layer category 1, Sub-test 3 is omitted according to TS25.306 Table 5.1g.

Note 6: β_{ed} can not be set directly, it is set by Absolute Grant Value.

Setup Configuration

General Note:

- Per KDB 941225 D01, SAR for Head / Hotspot / Body-worn Exposure is measured using a 12.2Kbps RMC with TPC bit configured to all 1s
- Per KDB 941225 D01 RMC12.2Kbps setting is used to evaluate SAR. If the maximum output power and Tune-up tolerance specified for production units in HSDPA/HSUPA is $\leq 1/4$ dB higher than RMC 12.2Kbps or when the highest reported SAR of the RMC12.2Kbps is scaled by the ratio of specified maximum output power and tune-up tolerance of HSDPA / HSUPA to RMC 12.2Kbps and the adjusted SAR is ≤ 1.2 W/kg, SAR measurement is not required for HSDPA / HSUPA.

Mode		WCDMA Band II			WCDMA Band V		
		Conducted Power (dBm)			Conducted Power (dBm)		
		CH9262	CH9400	CH9538	CH4132	CH4183	CH4233
		1852.4MHz	1880MHz	1907.6MHz	826.4MHz	836.6MHz	846.6MHz
AMR 12.2K		22.34	22.05	22.81	24.35	24.23	24.19
RMC 12.2K		22.37	22.08	22.84	24.39	24.27	24.23
HSDPA	Subtest-1	22.00	22.42	22.56	23.48	23.38	23.33
	Subtest-2	21.48	21.92	22.00	22.90	22.87	22.86
	Subtest-3	21.50	21.95	22.00	22.96	22.90	22.87
	Subtest-4	21.46	21.99	22.03	22.95	22.82	22.78
HSUPA	Subtest-1	20.00	20.46	20.59	21.00	21.38	21.33
	Subtest-2	20.50	20.93	21.06	21.85	21.83	21.75
	Subtest-3	20.93	21.41	21.51	22.41	22.37	22.34
	Subtest-4	20.03	20.48	20.56	21.45	21.41	21.37
	Subtest-5	21.96	22.46	22.51	23.47	23.45	23.38

11.3. LTE

General Note:

1. CMW500 base station simulator was used to setup the connection with EUT; the frequency band, channel, bandwidth, RB allocation configuration, modulation type are set in the base station simulator to configure EUT transmitting at maximum power and at different configurations which are requested to be reported to FCC, for conducted power measurement and SAR testing.
2. Per KDB 941225 D05v02r03, when a properly configured base station simulator is used for the SAR and power measurements, spectrum plots for each RB allocation and offset configuration is not required.
3. Per KDB 941225 D05v02r03, start with the largest channel bandwidth and measure SAR for QPSK with 1 RB allocation, using the RB offset and required test channel combination with the highest maximum output power for RB offsets at the upper edge, middle and lower edge of each required test channel.
4. Per KDB 941225 D05v02r03, 50% RB allocation for QPSK SAR testing follows 1RB QPSK allocation procedure.
5. Per KDB 941225 D05v02r03, for QPSK with 100% RB allocation, SAR is not required when the highest maximum output power for 100 % RB allocation is less than the highest maximum output power in 50% and 1 RB allocations and the highest reported SAR for 1 RB and 50% RB allocation are ≤ 0.8 W/kg. Otherwise, SAR is measured for the highest output power channel; and if the reported SAR is > 1.45 W/kg, the remaining required test channels must also be tested.
6. Per KDB 941225 D05v02r03, 16QAM output power for each RB allocation configuration is $>$ not $\frac{1}{2}$ dB higher than the same configuration in QPSK and the reported SAR for the QPSK configuration is ≤ 1.45 W/kg; Per KDB 941225 D05v02r03, 16QAM SAR testing is not required.
7. Per KDB 941225 D05v02r03, smaller bandwidth output power for each RB allocation configuration is $>$ not $\frac{1}{2}$ dB higher than the same configuration in the largest supported bandwidth, and the reported SAR for the largest supported bandwidth is ≤ 1.45 W/kg; Per KDB 941225 D05v02r03, smaller bandwidth SAR testing is not required.

LTE-FDD Band 2				Conducted Power(dBm)		
Band-width	Modulation	RB allocation	RB offset	18607	18900	19193
				1850.7MHz	1880MHz	1909.3MHz
1.4MHz	QPSK	1	0	22.60	23.10	23.30
			2	22.71	23.23	23.41
			5	22.59	23.12	23.33
		3	0	22.68	23.16	23.33
			1	22.65	23.16	23.33
			3	22.70	23.18	23.34
	6	0	21.79	22.25	22.50	
	16QAM	1	0	21.75	22.05	22.45
			2	21.89	22.25	22.62
			5	21.76	22.10	22.39
		3	0	21.65	22.08	22.35
			1	21.67	22.07	22.33
			3	21.64	22.09	22.31
		6	0	20.77	21.26	21.30
Band-width	Modulation	RB allocation	RB offset	18615	18900	19185
				1851.5MHz	1880MHz	1908.5MHz
3MHz	QPSK	1	0	22.32	23.24	23.01
			8	22.36	23.10	23.01
			14	22.36	22.96	23.00
		8	0	21.59	22.04	22.20
			4	21.57	22.05	22.23
			7	21.81	22.05	22.19
	15	0	21.59	22.02	22.18	
	16QAM	1	0	21.61	22.14	22.29
			8	21.62	21.96	22.22
			14	21.57	21.94	22.17
		8	0	20.42	21.03	21.20
			4	20.52	21.01	21.20
			7	20.48	21.03	21.15
		15	0	20.53	20.88	21.13

LTE-FDD Band 2				Conducted Power(dBm)			
Band-width	Modulation	RB allocation	RB offset	18625	18900	19175	
				1852.5MHz	1880MHz	1907.5MHz	
5MHz	QPSK	1	0	22.43	22.85	23.05	
			12	22.45	22.99	23.12	
			24	22.37	22.90	23.01	
		12	0	21.48	21.98	22.14	
			7	21.48	22.00	22.13	
			13	21.49	22.02	22.11	
	16QAM	25	0	21.52	22.08	22.18	
			1	0	21.42	22.13	22.11
				12	21.53	22.31	22.21
		24		21.46	22.19	22.05	
		12	0	20.46	21.02	21.11	
			7	20.50	21.03	21.15	
			13	20.47	21.08	21.12	
		25	0	20.49	21.01	21.17	
Band-width	Modulation	RB allocation	RB offset	18650	18900	19150	
				1855MHz	1880MHz	1905MHz	
10MHz	QPSK	1	0	23.01	23.54	23.63	
			24	23.19	23.77	23.71	
			49	23.16	23.61	23.60	
		25	0	22.22	22.72	22.90	
			24	22.23	22.73	22.90	
			49	22.30	22.81	22.82	
		50	0	22.29	22.76	22.87	
		16QAM	1	0	22.24	22.50	22.80
				24	22.43	22.69	22.82
	49			22.40	22.62	22.78	
	25		0	21.24	21.73	21.89	
			24	21.25	21.75	21.86	
			49	21.31	21.84	21.81	
	50		0	21.28	21.71	21.79	

LTE-FDD Band 2				Conducted Power(dBm)			
Band-width	Modulation	RB allocation	RB offset	18675	18900	19125	
				1857.5MHz	1880MHz	1902.5MHz	
15MHz	QPSK	1	0	22.84	23.29	23.43	
			38	23.09	23.48	23.56	
			74	23.06	23.38	23.45	
		38	0	22.20	22.30	22.61	
			18	22.38	22.45	22.80	
			37	22.40	22.34	22.68	
		75	0	22.24	22.64	22.91	
		16QAM	1	0	22.14	22.28	22.63
				38	22.38	22.46	22.78
	74			22.41	22.33	22.67	
	38		0	22.16	22.27	22.63	
			18	22.39	22.48	22.78	
			37	22.41	22.34	22.66	
	75	0	21.14	21.59	21.76		
	Band-width	Modulation	RB allocation	RB offset	18700	18900	19100
1860MHz					1880MHz	1900MHz	
20MHz	QPSK	1	0	23.01	22.96	23.33	
			49	23.24	23.34	23.79	
			99	23.02	23.09	23.44	
		50	0	22.12	22.43	22.77	
			25	22.14	22.47	22.77	
			50	22.21	22.56	22.65	
		100	0	22.13	22.52	22.74	
		16QAM	1	0	21.91	22.18	22.41
				49	22.39	22.62	22.83
	99			22.25	22.32	22.48	
	50		0	21.10	21.47	21.71	
			25	21.11	21.49	21.70	
			50	21.22	21.61	21.59	
	100	0	21.09	21.49	21.68		

LTE-FDD Band 4				Conducted Power(dBm)		
Band-width	Modulation	RB allocation	RB offset	19957	20175	20393
				1710.7MHz	1732.5MHz	1754.3MHz
1.4MHz	QPSK	1	0	23.03	22.78	22.83
			2	23.23	22.89	23.01
			5	23.06	22.79	22.87
		3	0	23.12	22.85	22.90
			1	23.05	22.84	22.90
			3	22.70	22.88	22.94
	6	0	21.80	21.80	21.91	
	16QAM	1	0	22.18	21.89	21.92
			2	22.39	22.07	22.15
			5	22.19	21.90	21.95
		3	0	22.00	21.75	21.82
			1	21.79	21.77	21.81
			3	21.62	21.78	21.84
		6	0	20.74	20.65	20.74
Band-width	Modulation	RB allocation	RB offset	19965	20175	20385
				1711.5MHz	1732.5MHz	1753.5MHz
3MHz	QPSK	1	0	23.14	23.32	22.89
			8	23.15	22.93	22.93
			14	23.15	22.92	22.94
		8	0	22.27	21.91	21.95
			4	22.29	21.91	21.99
			7	22.25	21.90	21.95
	15	0	22.25	21.86	21.95	
	16QAM	1	0	22.40	21.83	22.08
			8	22.35	21.82	22.07
			14	22.34	21.79	22.08
		8	0	21.22	20.88	20.97
			4	21.24	20.88	20.98
			7	21.24	20.89	20.96
		15	0	21.14	20.79	20.90

LTE-FDD Band 4				Conducted Power(dBm)		
Band-width	Modulation	RB allocation	RB offset	19975	20175	20375
				1712.5MHz	1732.5MHz	1752.5MHz
5MHz	QPSK	1	0	22.68	22.87	22.86
			12	22.83	22.99	23.04
			24	22.70	22.87	22.92
		12	0	21.72	21.86	21.99
			7	21.72	21.85	21.95
			13	21.75	21.87	21.84
	25	0	21.76	21.91	21.93	
	16QAM	1	0	21.83	21.82	21.83
			12	22.00	21.98	21.97
			24	21.85	21.88	21.86
		12	0	20.76	20.92	20.94
			7	20.76	20.87	20.94
			13	20.78	20.91	20.83
		25	0	20.75	20.95	20.94
Band-width		Modulation	RB allocation	RB offset	20000	20175
	1715MHz				1732.5MHz	1750MHz
10MHz	QPSK	1	0	23.08	22.72	22.72
			24	22.87	22.83	22.88
			49	22.71	22.73	22.73
		25	0	21.78	21.85	21.83
			24	21.77	21.84	21.82
			49	21.76	21.82	21.64
	50	0	21.79	21.83	21.75	
	16QAM	1	0	22.10	21.88	21.57
			24	22.00	22.00	21.72
			49	21.90	21.88	21.63
		25	0	20.76	20.87	20.84
			24	20.79	20.90	20.84
			49	20.77	20.83	20.66
		50	0	20.75	20.86	20.76

LTE-FDD Band 4				Conducted Power(dBm)		
Band-width	Modulation	RB allocation	RB offset	20025	20175	20325
				1717.5MHz	1732.5MHz	1747.5MHz
15MHz	QPSK	1	0	22.72	22.69	22.65
			38	22.73	22.81	22.72
			74	22.67	22.73	22.62
		38	0	21.85	21.56	21.80
			18	21.98	21.67	21.86
			37	21.95	21.56	21.75
	75	0	21.78	21.82	21.78	
	16QAM	1	0	21.89	21.55	21.79
			38	21.98	21.66	21.86
			74	21.93	21.56	21.78
		38	0	21.85	21.57	21.79
			18	21.99	21.67	21.87
			37	21.94	21.55	21.81
		75	0	20.74	20.79	20.67
Band-width		Modulation	RB allocation	RB offset	20050	20175
	1720MHz				1732.5MHz	1745MHz
20MHz	QPSK	1	0	22.30	22.06	21.99
			49	22.54	22.33	22.29
			99	22.13	21.82	21.74
		50	0	21.44	21.35	21.11
			25	21.43	21.33	21.15
			50	21.30	21.16	21.78
	100	0	21.41	21.26	21.82	
	16QAM	1	0	21.40	21.11	20.97
			49	21.75	21.41	21.22
			99	21.32	20.89	21.00
		50	0	20.45	20.39	20.50
			25	20.46	20.41	20.59
			50	20.34	20.34	20.77
		100	0	20.38	20.45	20.81

LTE-FDD Band 5				Conducted Power(dBm)		
Band-width	Modulation	RB allocation	RB offset	20407	20525	20643
				8.4.7MHz	836.5MHz	848.3MHz
1.4MHz	QPSK	1	0	23.30	23.38	23.28
			2	23.45	23.47	23.39
			5	23.30	23.38	23.23
		3	0	23.35	23.42	23.35
			1	23.34	23.43	23.35
			3	23.35	23.45	23.35
	6	0	22.45	22.52	22.42	
	16QAM	1	0	22.54	22.58	22.50
			2	22.71	22.75	22.68
			5	22.55	22.58	22.46
		3	0	22.42	22.45	22.38
			1	22.37	22.44	22.42
			3	22.38	22.44	22.31
	6	0	21.48	21.42	21.46	
Band-width	Modulation	RB allocation	RB offset	20415	20525	20635
				825.5MHz	836.5MHz	847.5MHz
3MHz	QPSK	1	0	23.34	23.47	22.84
			8	23.36	22.94	22.82
			14	23.35	22.91	22.84
		8	0	22.42	21.99	21.90
			4	22.42	21.99	21.94
			7	22.41	22.00	21.93
	15	0	22.43	21.97	21.93	
	16QAM	1	0	22.62	22.12	22.10
			8	22.59	21.91	22.05
			14	22.61	21.88	22.07
		8	0	21.42	20.99	20.93
			4	21.43	20.98	20.96
			7	21.37	20.95	20.94
		15	0	21.30	20.85	20.87

LTE-FDD Band 5				Conducted Power(dBm)			
Band-width	Modulation	RB allocation	RB offset	20425	20525	20625	
				826.5MHz	836.5MHz	846.5MHz	
5MHz	QPSK	1	0	23.26	22.91	22.80	
			12	23.40	22.97	22.88	
			24	22.86	22.84	22.72	
		12	0	21.88	21.97	21.86	
			7	21.84	21.98	21.91	
			13	21.76	21.95	21.85	
	25	0	21.82	21.98	21.89		
	16QAM	1	0	22.55	22.00	21.90	
			12	22.18	22.04	22.01	
			24	22.06	21.93	21.85	
		12	0	20.88	20.96	20.89	
			7	20.90	21.01	20.87	
			13	20.78	21.05	20.82	
		25	0	20.77	21.02	20.85	
Band-width		Modulation	RB allocation	RB offset	20450	20525	20600
	829MHz				836.5MHz	844MHz	
10MHz	QPSK	1	0	22.93	22.84	22.90	
			24	22.93	22.95	22.89	
			49	22.85	22.85	22.78	
		25	0	22.13	22.09	21.85	
			24	22.11	22.10	21.87	
			49	21.73	22.17	21.89	
		50	0	22.03	22.12	21.87	
		16QAM	1	0	22.03	22.09	22.18
				24	22.19	22.20	22.23
	49			22.09	22.10	22.02	
	25		0	21.05	21.10	20.85	
			24	21.06	21.10	20.84	
			49	20.76	21.16	20.87	
	50		0	20.91	21.12	20.82	

LTE-FDD Band 7				Conducted Power(dBm)		
Band-width	Modulation	RB allocation	RB offset	20775	21100	21425
				2502.5MHz	2535MHz	2567.5MHz
5MHz	QPSK	1	0	22.92	23.08	22.61
			12	23.10	23.21	22.73
			24	22.99	23.07	22.59
		12	0	21.91	22.04	21.68
			7	21.95	22.03	21.67
			13	21.96	21.96	21.57
	25	0	21.96	22.00	21.65	
	16QAM	1	0	21.99	21.93	21.49
			12	22.21	22.05	21.64
			24	22.07	21.93	21.51
		12	0	20.94	20.97	20.61
			7	20.94	20.96	20.61
			13	20.93	20.95	20.53
		25	0	20.89	20.98	20.58
Band-width		Modulation	RB allocation	RB offset	20800	21100
	2505MHz				2535MHz	2565MHz
10MHz	QPSK	1	0	22.87	23.04	22.71
			24	23.11	23.17	22.77
			49	23.00	23.03	22.58
		25	0	21.93	21.98	21.73
			24	21.93	22.02	21.75
			49	22.00	22.01	21.60
	50	0	21.92	21.96	21.70	
	16QAM	1	0	21.96	21.84	21.78
			24	22.18	22.02	21.85
			49	22.09	21.87	21.69
		25	0	20.88	20.94	20.64
			24	20.92	20.95	20.62
			49	20.96	20.97	20.56
		50	0	20.88	20.91	20.60

LTE-FDD Band 7				Conducted Power(dBm)		
Band-width	Modulation	RB allocation	RB offset	20825	21100	21375
				2507.5MHz	2535MHz	2562.5MHz
15MHz	QPSK	1	0	23.27	23.03	22.78
			38	23.03	23.12	22.75
			74	22.93	22.96	22.56
		38	0	22.00	21.84	21.87
			18	22.23	21.94	21.83
			37	22.13	21.79	21.63
	75	0	22.09	22.18	21.83	
	16QAM	1	0	21.95	21.83	21.84
			38	22.22	21.92	21.84
			74	22.15	21.82	21.65
		38	0	22.08	21.84	21.87
			18	22.23	21.96	21.80
			37	22.16	21.83	21.65
		75	0	20.99	21.01	20.70
Band-width		Modulation	RB allocation	RB offset	20850	21100
	2510MHz				2535MHz	2560MHz
20MHz	QPSK	1	0	22.80	22.77	22.82
			49	23.20	23.18	22.99
			99	22.86	22.72	22.55
		50	0	22.04	22.04	21.83
			25	22.02	22.04	21.83
			50	22.02	22.00	21.68
	100	0	22.01	22.02	21.74	
	16QAM	1	0	21.80	21.79	21.71
			49	22.29	22.11	21.94
			99	21.93	21.76	21.48
		50	0	20.96	21.01	20.75
			25	20.98	21.02	20.74
			50	20.95	20.95	20.63
		100	0	20.96	20.94	20.67

11.4. WiFi

For 2.4GHz WiFi SAR testing, highest average RF output power channel for the lowest data rate for 802.11b were for SAR evaluation.

The maximum output power specified for production units are determined for all applicable 802.11 transmission modes in each standalone and aggregated frequency band. Maximum output power is measured for the highest maximum output power configuration(s) in each frequency band according to the default power measurement procedures.

SAR testing is not required for OFDM mode(s) when the highest reported SAR for DSSS is adjusted by the ratio of OFDM to DSSS specified maximum output power and the adjusted SAR is ≤ 1.2 W/kg.

WiFi 2.4G				
Mode	Channel	Frequency (MHz)	Conducted Peak Power (dBm)	Conducted Average Power (dBm)
802.11b	1	2412	19.39	16.90
	6	2437	19.69	17.51
	11	2462	19.17	17.02
802.11g	1	2412	24.40	19.64
	6	2437	23.71	19.67
	11	2462	23.23	19.86
802.11n (HT20)	1	2412	23.06	19.76
	6	2437	23.44	19.88
	11	2462	23.41	19.56

11.5. Bluetooth

Bluetooth				
Mode	Channel	Frequency (MHz)	Conducted Peak Power (dBm)	Conducted Average Power (dBm)
GFSK	0	2402	4.97	4.90
	39	2441	6.55	6.48
	78	2480	4.86	4.81
$\pi/4$ QPSK	0	2402	4.26	3.72
	39	2441	5.78	5.19
	78	2480	4.17	3.64
8DPSK	0	2402	4.42	3.71
	39	2441	5.95	5.21
	78	2480	4.32	3.63
GFSK(BLE)	0	2402	6.13	-
	19	2440	5.84	-
	39	2480	4.85	-

12. Maximum Tune-up Limit

GSM		
Mode	Maximum Tune-up (dBm)	
	GSM850	PCS1900
GSM (GMSK, 1Tx Slot)	32.50	30.10
GPRS (GMSK, 1Tx Slot)	32.50	30.00
GPRS (GMSK, 2Tx Slots)	32.00	29.20
GPRS (GMSK, 3Tx Slots)	30.50	28.00
GPRS (GMSK, 4Tx Slots)	29.00	26.50
EGPRS (8PSK, 1Tx Slot)	27.50	25.50
EGPRS (8PSK, 2Tx Slots)	27.00	25.00
EGPRS (8PSK, 3Tx Slots)	25.00	23.00
EGPRS (8PSK, 4Tx Slots)	23.50	21.00

WCDMA		
Mode	Maximum Tune-up (dBm)	
	FDD Band II	FDD Band V
AMR 12.2Kbps	23.00	24.50
RMC 12.2Kbps	23.00	24.50
HSDPA Subtest-1	23.00	23.50
HSDPA Subtest-2	22.50	23.00
HSDPA Subtest-3	22.50	23.00
HSDPA Subtest-4	22.50	23.00
HSUPA Subtest-1	21.00	21.50
HSUPA Subtest-2	21.50	22.00
HSUPA Subtest-3	22.00	22.50
HSUPA Subtest-4	21.00	21.50
HSUPA Subtest-5	23.00	23.50

LTE				
Fequency Band	Band-width(MHz)	Modulation	RB allocation	Maximum Tune-up (dBm)
FDD Band 2	1.4	QPSK	1	23.50
			3	23.50
			6	23.00
		16QAM	1	23.00
			3	22.50
			6	21.50
	3	QPSK	1	23.50
			8	22.50
			15	22.50
		16QAM	1	22.50
			8	21.50
			15	21.50
	5	QPSK	1	23.50
			12	22.50
			25	22.50
		16QAM	1	22.50
			12	21.50
			25	21.50
	10	QPSK	1	24.00
			25	23.00
			50	23.00
		16QAM	1	23.00
			25	22.00
			50	22.00
	15	QPSK	1	24.00
			38	23.00
			75	23.00
		16QAM	1	23.00
			38	23.00
			75	22.00
20	QPSK	1	24.00	
		50	23.00	
		100	23.00	
	16QAM	1	23.00	
		50	22.00	
		100	22.00	

LTE				
Fequency Band	Band-width(MHz)	Modulation	RB allocation	Maximum Tune-up (dBm)
FDD Band 4	1.4	QPSK	1	23.50
			3	23.50
			6	22.00
		16QAM	1	22.50
			3	22.50
			6	21.00
	3	QPSK	1	23.50
			8	22.50
			15	22.50
		16QAM	1	22.50
			8	21.50
			15	21.50
	5	QPSK	1	23.50
			12	22.00
			25	22.00
		16QAM	1	22.50
			12	21.00
			25	21.00
	10	QPSK	1	23.50
			25	22.00
			50	22.00
		16QAM	1	22.50
			25	21.00
			50	21.00
	15	QPSK	1	23.00
			38	22.00
			75	22.00
		16QAM	1	22.00
			38	22.00
			75	21.00
20	QPSK	1	23.00	
		50	22.00	
		100	22.00	
	16QAM	1	22.00	
		50	21.00	
		100	21.00	

LTE				
Fequency Band	Band-width(MHz)	Modulation	RB allocation	Maximum Tune-up (dBm)
FDD Band 5	1.4	QPSK	1	23.50
			3	23.50
			6	23.00
		16QAM	1	23.00
			3	22.50
			6	21.50
	3	QPSK	1	23.50
			8	22.50
			15	22.50
		16QAM	1	23.00
			8	21.50
			15	21.50
	5	QPSK	1	23.50
			12	22.00
			25	22.00
		16QAM	1	23.00
			12	21.50
			25	21.50
	10	QPSK	1	23.00
			25	22.50
			50	22.50
16QAM		1	22.50	
		25	21.50	
		50	21.50	

LTE				
Fequency Band	Band-width(MHz)	Modulation	RB allocation	Maximum Tune-up (dBm)
FDD Band 7	5	QPSK	1	23.50
			12	22.50
			25	22.50
		16QAM	1	22.50
			12	21.00
			25	21.00
	10	QPSK	1	23.50
			25	22.50
			50	22.00
		16QAM	1	22.50
			25	21.00
			50	21.00
	15	QPSK	1	23.50
			38	22.50
			75	22.50
		16QAM	1	22.50
			38	22.50
			75	21.50
	20	QPSK	1	23.50
			50	22.50
100			22.50	
16QAM		1	22.50	
		50	21.50	
		100	21.00	

The allowed Maximum Power Reduction (MPR) for the maximum output power in Table 6.2.2-1 due to higher order modulation and transmit bandwidth configuration (resource blocks) is specified in Table 6.2.3-1.

Table 6.2.3-1: Maximum Power Reduction (MPR) for Power Class 1, 2 and 3

Modulation	Channel bandwidth / Transmission bandwidth (N _{RB})						MPR (dB)
	1.4 MHz	3.0 MHz	5 MHz	10 MHz	15 MHz	20 MHz	
QPSK	> 5	> 4	> 8	> 12	> 16	> 18	≤ 1
16 QAM	≤ 5	≤ 4	≤ 8	≤ 12	≤ 16	≤ 18	≤ 1
16 QAM	> 5	> 4	> 8	> 12	> 16	> 18	≤ 2
64 QAM	≤ 5	≤ 4	≤ 8	≤ 12	≤ 16	≤ 18	≤ 2
64 QAM	> 5	> 4	> 8	> 12	> 16	> 18	≤ 3
256 QAM	≤ 1						≤ 5

WiFi 2.4G	
Mode	Maximum Tune-up (dBm) Conducted Average Power
802.11b	18.00
802.11g	20.00
802.11n(HT20)	20.00

Bluetooth	
Mode	Maximum Tune-up (dBm) Conducted Average Power
GFSK	6.50
$\pi/4$ QPSK	5.50
8DPSK	5.50
GFSK(BLE)	6.50

Per KDB 447498 D01, the 1-g and 10-g SAR test exclusion thresholds for 100MHz to 6GHz at test separation distances ≤ 50 mm are determined by:

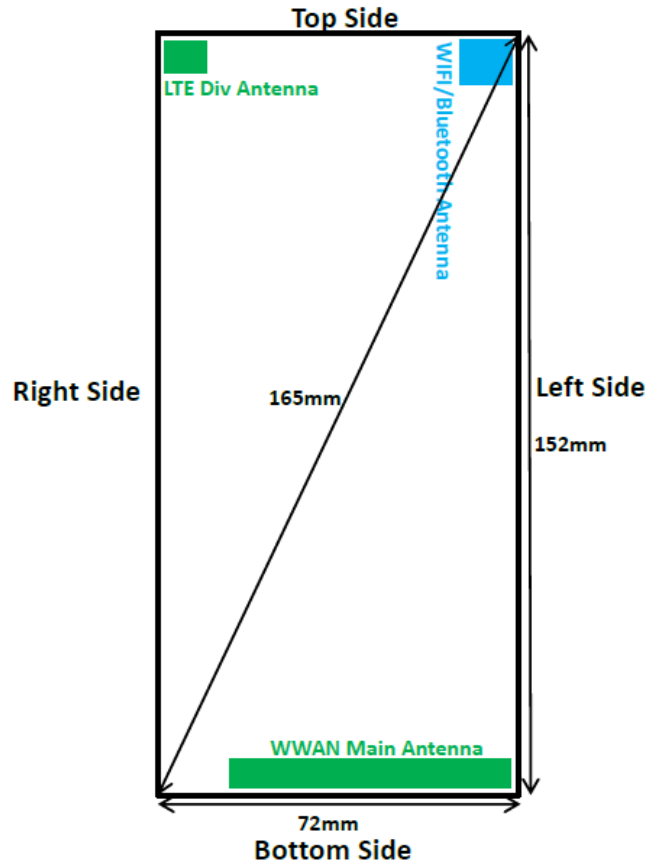
$$[(\text{max. Power of channel, including tune-up tolerance, mW}) / (\text{min. test separation distance, mm})] * [\sqrt{f(\text{GHz})}] \leq 3.0 \text{ for 1-g SAR}$$

Band/Mode	F(GHz)	Position	Separation Distance (mm)	Exclusion Thresholds	SAR test exclusion
Bluetooth	2.45	Head	0	1.4	Yes
		Body	10	0.7	Yes

Per KDB 447498 D01, when the minimum test separation distance is < 5 mm, a distance of 5mm is applied to determine SAR test exclusion.

The test exclusion threshold is ≤ 3 , SAR testing is not required.

13. Antenna Location



Rear View

Distance of the Antenna to the EUT surface/edge(mm)						
Antenna	Rear	Front	Top side	Bottom side	Right side	Left side
WWAN	2	3	146	2	17	2
WiFi/BT	2	3	2	145	58	2

Positions for SAR tests; Hotspot mode						
Antenna	Rear	Front	Top side	Bottom side	Right side	Left side
WWAN	Yes	Yes	No	Yes	Yes	Yes
WiFi/BT	Yes	Yes	Yes	No	No	Yes

General note:

Referring to KDB941225 D06, when the overall device length and width are >9cm*5cm, the test distance is 10mm. SAR must be measured for all sides and surfaces with a transmitting antenna located within 25mm from that surface or edge.

14. Measured and Reported SAR Results

SAR Test Reduction criteria are as follows:

- Reported SAR(W/kg) for WWAN = Measured SAR *Tune-up Scaling Factor
- Reported SAR(W/kg) for Wi-Fi and Bluetooth = Measured SAR * Tune-up scaling factor * Duty Cycle scaling factor
- Duty Cycle scaling factor = 1 / Duty cycle (%)

KDB 447498 D01 General RF Exposure Guidance:

Testing of other required channels within the operating mode of a frequency band is not required when the reported 1-g or 10-g SAR for the mid-band or highest output power channel is:

- ≤ 0.8 W/kg or 2.0 W/kg, for 1-g or 10-g respectively, when the transmission band is ≤ 100 MHz
- ≤ 0.6 W/kg or 1.5 W/kg, for 1-g or 10-g respectively, when the transmission band is between 100 MHz and 200 MHz
- ≤ 0.4 W/kg or 1.0 W/kg, for 1-g or 10-g respectively, when the transmission band is ≥ 200 MHz

KDB 648474 D04 Handset SAR:

With headset attached, when the reported SAR for body-worn accessory, measured without a headset connected to the handset, is > 1.2 W/kg, the highest reported SAR configuration for that wireless mode and frequency band should be repeated for that body-worn accessory with a headset attached to the handset. Additional 1-g SAR testing at 5 mm is not required when hotspot mode 10-g extremity SAR is not required for the surfaces and edges; since all 1-g reported SAR < 1.2 W/kg.

KDB 941225 D01 SAR test for 3G SAR Test Reduction Procedure:

When the maximum output power and tune-up tolerance specified for production units in a secondary mode is $\leq \frac{1}{4}$ dB higher than the primary mode or when the highest reported SAR of the primary mode is scaled by the ratio of specified maximum output power and tune-up tolerance of secondary to primary mode and the adjusted SAR is ≤ 1.2 W/kg, SAR measurement is not required for the secondary mode.

GSM Guidance

SAR test reduction for GPRS and EDGE modes is determined by the source-based time-averaged output power specified for production units, including tune-up tolerance. The data mode with highest specified time-averaged output power should be tested for SAR compliance in the applicable exposure conditions. For modes with the same specified maximum output power and tolerance, the higher number time-slot configuration should be tested. Please refer to section 9. for GSM power verification.

SAR is not required for EDGE (8PSK) mode because the maximum output power and tune-up limit is $\leq 1/4$ dB higher than GPRS/EDGE (GMSK) or the adjusted SAR of the highest reported SAR of GPRS/EDGE (GMSK) is ≤ 1.2 W/kg.

W-CDMA Guidance

SAR for next to the ear head exposure is measured using a 12.2 kbps RMC with TPC bits configured to all "1's". The 3G SAR test reduction procedure is applied to AMR configurations with 12.2 kbps RMC (Head) and other spreading codes and multiple DPDCHn configurations supported by the handset with 12.2 kbps RMC (Body-Worn Accessory) as the primary mode.

SAR measurement is not required for the HSDPA, HSUPA, DC-HSDPA and HSPA+. When primary mode and the adjusted SAR is ≤ 1.2 W/kg and secondary mode is $\leq \frac{1}{4}$ dB higher than the primary mode

KDB 941225 D05 SAR for LTE Devices:

SAR test reduction is applied using the following criteria:

- Start with the largest channel bandwidth and measure SAR for QPSK with 1 RB, and 50% RB allocation, using the RB offset and required test channel combination with the highest maximum output power among RB offsets at the upper edge, middle and lower edge of each required test channel.
- When the reported SAR is > 0.8 W/kg, testing for other Channels is performed at the highest output power level for 1RB, and 50% RB configuration for that channel.
- Testing for 100% RB configuration is performed at the highest output power level for 100% RB configuration across the Low, Mid and High Channel when the highest reported SAR for 1 RB and 50% RB are > 0.8 W/kg. Testing for the remaining required channels is not needed because the reported SAR for 100% RB Allocation < 1.45 W/kg.
- Testing for 16-QAM and 64-QAM modulation is not required because the reported SAR for QPSK is < 1.45 W/Kg and its output power is not more than 0.5 dB higher than that of QPSK.

- Testing for the other channel bandwidths is not required because the reported SAR for the highest channel bandwidth is < 1.45 W/Kg and its output power is not more than 0.5 dB higher than that of the highest channel bandwidth.

KDB 248227 D01 SAR meas for 802.11:

When 802.11 frame gaps are accounted for in the transmission, a maximum transmission duty factor of 92 - 96% is typically achievable in most test mode configurations. A minimum transmission duty factor of 85% is required to avoid certain hardware and device implementation issues related to wide range SAR scaling. The reported SAR must be scaled to 100% transmission duty factor to determine compliance at the maximum tune-up tolerance limit.

SAR test reduction for 802.11 Wi-Fi transmission mode configurations are considered separately for DSSS and OFDM. An initial test position is determined to reduce the number of tests required for certain exposure configurations with multiple test positions. An initial test configuration is determined for each frequency band and aggregated band according to maximum output power, channel bandwidth, wireless mode configurations and other operating parameters to streamline the measurement requirements. For 2.4 GHz DSSS, either the initial test position or DSSS procedure is applied to reduce the number of SAR tests; these are mutually exclusive. For OFDM, an initial test position is only applicable to next to the ear, UMPC mini-tablet and hotspot mode configurations, which is tested using the initial test configuration to facilitate test reduction. For other exposure conditions with a fixed test position, SAR test reduction is determined using only the initial test configuration.

The multiple test positions require SAR measurements in head, hotspot mode or UMPC mini-tablet configurations may be reduced according to the highest reported SAR determined using the initial test position(s) by applying the DSSS or OFDM SAR measurement procedures in the required wireless mode test configuration(s). The initial test position(s) is measured using the highest measured maximum output power channel in the required wireless mode test configuration(s). When the reported SAR for the initial test position is:

- ≤ 0.4 W/kg, further SAR measurement is not required for the other test positions in that exposure configuration and wireless mode combination within the frequency band or aggregated band. DSSS and OFDM configurations are considered separately according to the required SAR procedures.
- > 0.4 W/kg, SAR is repeated using the same wireless mode test configuration tested in the initial test position to measure the subsequent next closet/smallest test separation distance and maximum coupling test position, on the highest maximum output power channel, until the reported SAR is ≤ 0.8 W/kg or all required test positions are tested.
 - For subsequent test positions with equivalent test separation distance or when exposure is dominated by coupling conditions, the position for maximum coupling condition should be tested.
 - When it is unclear, all equivalent conditions must be tested.
- For all positions/configurations tested using the initial test position and subsequent test positions, when the reported SAR is > 0.8 W/kg, measure the SAR for these positions/configurations on the subsequent next highest measured output power channel(s) until the reported SAR is ≤ 1.2 W/kg or all required test channels are considered.
 - The additional power measurements required for this step should be limited to those necessary for identifying subsequent highest output power channels to apply the test reduction.
- When the specified maximum output power is the same for both UNII 1 and UNII 2A, begin SAR measurements in UNII 2A with the channel with the highest measured output power. If the reported SAR for UNII 2A is ≤ 1.2 W/kg, SAR is not required for UNII 1; otherwise treat the remaining bands separately and test them independently for SAR.
- When the specified maximum output power is different between UNII 1 and UNII 2A, begin SAR with the band that has the higher specified maximum output. If the highest reported SAR for the band with the highest specified power is ≤ 1.2 W/kg, testing for the band with the lower specified output power is not required; otherwise test the remaining bands independently for SAR.

To determine the initial test position, Area Scans were performed to determine the position with the Maximum Value of SAR (measured). The position that produced the highest Maximum Value of SAR is considered the worst case position; thus used as the initial test position.

14.1. Head SAR

GSM850										
Mode	Test Position	Frequency		Conducted Power (dBm)	Tune up limit (dBm)	Tune up scaling factor	Power Drift (dB)	Measured SAR(1g) (W/kg)	Report SAR(1g) (W/kg)	Plot No.
		CH	MHz							
GPRS (3Tx slots)	Left Cheek	128	824.2	30.23	30.50	1.06	-0.05	0.367	0.391	-
		190	836.6	30.16	30.50	1.08	-	-	-	-
		251	848.8	30.15	30.50	1.08	-	-	-	-
	Left Tilt	128	824.2	30.23	30.50	1.06	0.06	0.281	0.299	-
		190	836.6	30.16	30.50	1.08	-	-	-	-
		251	848.8	30.15	30.50	1.08	-	-	-	-
	Right Cheek	128	824.2	30.23	30.50	1.06	0.11	0.396	0.421	1
		190	836.6	30.16	30.50	1.08	-	-	-	-
		251	848.8	30.15	30.50	1.08	-	-	-	-
	Right Tilt	128	824.2	30.23	30.50	1.06	-0.03	0.300	0.319	-
		190	836.6	30.16	30.50	1.08	-	-	-	-
		251	848.8	30.15	30.50	1.08	-	-	-	-

PCS1900										
Mode	Test Position	Frequency		Conducted Power (dBm)	Tune up limit (dBm)	Tune up scaling factor	Power Drift (dB)	Measured SAR(1g) (W/kg)	Report SAR(1g) (W/kg)	Plot No.
		CH	MHz							
GPRS (3Tx slots)	Left Cheek	512	1850.2	26.77	28.00	1.33	-	-	-	-
		661	1880	27.14	28.00	1.22	-	-	-	-
		810	1909.8	27.82	28.00	1.04	-0.10	0.166	0.173	2
	Left Tilt	512	1850.2	26.77	28.00	1.33	-	-	-	-
		661	1880	27.14	28.00	1.22	-	-	-	-
		810	1909.8	27.82	28.00	1.04	-0.07	0.134	0.140	-
	Right Cheek	512	1850.2	26.77	28.00	1.33	-	-	-	-
		661	1880	27.14	28.00	1.22	-	-	-	-
		810	1909.8	27.82	28.00	1.04	0.05	0.160	0.167	-
	Right Tilt	512	1850.2	26.77	28.00	1.33	-	-	-	-
		661	1880	27.14	28.00	1.22	-	-	-	-
		810	1909.8	27.82	28.00	1.04	0.06	0.126	0.131	-

WCDMA Band II										
Mode	Test Position	Frequency		Conducted Power (dBm)	Tune up limit (dBm)	Tune up scaling factor	Power Drift (dB)	Measured SAR(1g) (W/kg)	Report SAR(1g) (W/kg)	Plot No.
		CH	MHz							
RMC 12.2K	Left Cheek	9262	1852.4	22.37	23.00	1.16	-	-	-	-
		9400	1880	22.08	23.00	1.24	-	-	-	-
		9538	1907.6	22.84	23.00	1.04	-0.18	0.151	0.157	3
	Left Tilt	9262	1852.4	22.37	23.00	1.16	-	-	-	-
		9400	1880	22.08	23.00	1.24	-	-	-	-
		9538	1907.6	22.84	23.00	1.04	-0.15	0.124	0.129	-
	Right Cheek	9262	1852.4	22.37	23.00	1.16	-	-	-	-
		9400	1880	22.08	23.00	1.24	-	-	-	-
		9538	1907.6	22.84	23.00	1.04	0.18	0.114	0.118	-
	Right Tilt	9262	1852.4	22.37	23.00	1.16	-	-	-	-
		9400	1880	22.08	23.00	1.24	-	-	-	-
		9538	1907.6	22.84	23.00	1.04	0.08	0.091	0.094	-

WCDMA Band V										
Mode	Test Position	Frequency		Conducted Power (dBm)	Tune up limit (dBm)	Tune up scaling factor	Power Drift (dB)	Measured SAR(1g) (W/kg)	Report SAR(1g) (W/kg)	Plot No.
		CH	MHz							
RMC 12.2K	Left Cheek	4132	826.4	24.39	24.50	1.03	0.17	0.104	0.107	-
		4183	836.6	24.27	24.50	1.05	-	-	-	-
		4233	846.6	24.23	24.50	1.06	-	-	-	-
	Left Tilt	4132	826.4	24.39	24.50	1.03	-0.19	0.080	0.082	-
		4183	836.6	24.27	24.50	1.05	-	-	-	-
		4233	846.6	24.23	24.50	1.06	-	-	-	-
	Right Cheek	4132	826.4	24.39	24.50	1.03	0.18	0.113	0.116	4
		4183	836.6	24.27	24.50	1.05	-	-	-	-
		4233	846.6	24.23	24.50	1.06	-	-	-	-
	Right Tilt	4132	826.4	24.39	24.50	1.03	0.10	0.086	0.088	-
		4183	836.6	24.27	24.50	1.05	-	-	-	-
		4233	846.6	24.23	24.50	1.06	-	-	-	-

LTE Band 2										
Mode	Test Position	Frequency		Conducted Power (dBm)	Tune up limit (dBm)	Tune up scaling factor	Power Drift (dB)	Measured SAR(1g) (W/kg)	Report SAR(1g) (W/kg)	Plot No.
		CH	MHz							
20M QPSK 1RB	Left Cheek	18700	1860	23.24	24.00	1.19	-	-	-	-
		18900	1880	23.34	24.00	1.16	-	-	-	-
		19100	1900	23.79	24.00	1.05	-0.15	0.317	0.333	5
	Left Tilt	18700	1860	23.24	24.00	1.19	-	-	-	-
		18900	1880	23.34	24.00	1.16	-	-	-	-
		19100	1900	23.79	24.00	1.05	0.11	0.260	0.272	-
	Right Cheek	18700	1860	23.24	24.00	1.19	-	-	-	-
		18900	1880	23.34	24.00	1.16	-	-	-	-
		19100	1900	23.79	24.00	1.05	0.07	0.309	0.324	-
	Right Tilt	18700	1860	23.24	24.00	1.19	-	-	-	-
		18900	1880	23.34	24.00	1.16	-	-	-	-
		19100	1900	23.79	24.00	1.05	-0.09	0.246	0.258	-
20M QPSK 50RB	Left Cheek	18700	1860	22.12	23.00	1.22	-	-	-	-
		18900	1880	22.43	23.00	1.14	-	-	-	-
		19100	1900	22.77	23.00	1.05	0.16	0.251	0.264	-
	Left Tilt	18700	1860	22.12	23.00	1.22	-	-	-	-
		18900	1880	22.43	23.00	1.14	-	-	-	-
		19100	1900	22.77	23.00	1.05	-0.08	0.220	0.232	-
	Right Cheek	18700	1860	22.12	23.00	1.22	-	-	-	-
		18900	1880	22.43	23.00	1.14	-	-	-	-
		19100	1900	22.77	23.00	1.05	-0.07	0.232	0.244	-
	Right Tilt	18700	1860	22.12	23.00	1.22	-	-	-	-
		18900	1880	22.43	23.00	1.14	-	-	-	-
		19100	1900	22.77	23.00	1.05	0.06	0.197	0.208	-

LTE Band 4										
Mode	Test Position	Frequency		Conducted Power (dBm)	Tune up limit (dBm)	Tune up scaling factor	Power Drift (dB)	Measured SAR(1g) (W/kg)	Report SAR(1g) (W/kg)	Plot No.
		CH	MHz							
20M QPSK 1RB	Left Cheek	20050	1720	22.54	23.00	1.11	-0.19	0.269	0.299	6
		20175	1732.5	22.33	23.00	1.17	-	-	-	-
		20300	1745	22.29	23.00	1.18	-	-	-	-
	Left Tilt	20050	1720	22.54	23.00	1.11	0.03	0.201	0.223	-
		20175	1732.5	22.33	23.00	1.17	-	-	-	-
		20300	1745	22.29	23.00	1.18	-	-	-	-
	Right Cheek	20050	1720	22.54	23.00	1.11	0.09	0.261	0.290	-
		20175	1732.5	22.33	23.00	1.17	-	-	-	-
		20300	1745	22.29	23.00	1.18	-	-	-	-
	Right Tilt	20050	1720	22.54	23.00	1.11	-0.05	0.203	0.225	-
		20175	1732.5	22.33	23.00	1.17	-	-	-	-
		20300	1745	22.29	23.00	1.18	-	-	-	-
20M QPSK 50RB	Left Cheek	20050	1720	21.30	22.00	1.17	-	-	-	-
		20175	1732.5	21.16	22.00	1.21	-	-	-	-
		20300	1745	21.78	22.00	1.05	0.13	0.226	0.238	-
	Left Tilt	20050	1720	21.30	22.00	1.17	-	-	-	-
		20175	1732.5	21.16	22.00	1.21	-	-	-	-
		20300	1745	21.78	22.00	1.05	-0.11	0.178	0.188	-
	Right Cheek	20050	1720	21.30	22.00	1.17	-	-	-	-
		20175	1732.5	21.16	22.00	1.21	-	-	-	-
		20300	1745	21.78	22.00	1.05	-0.06	0.205	0.216	-
	Right Tilt	20050	1720	21.30	22.00	1.17	-	-	-	-
		20175	1732.5	21.16	22.00	1.21	-	-	-	-
		20300	1745	21.78	22.00	1.05	0.08	0.146	0.153	-

LTE Band 5										
Mode	Test Position	Frequency		Conducted Power (dBm)	Tune up limit (dBm)	Tune up scaling factor	Power Drift (dB)	Measured SAR(1g) (W/kg)	Report SAR(1g) (W/kg)	Plot No.
		CH	MHz							
10M QPSK 1RB	Left Cheek	20450	829	22.93	23.00	1.02	-	-	-	-
		20525	836.5	22.95	23.00	1.01	-0.07	0.221	0.224	7
		20600	844	22.89	23.00	1.03	-	-	-	-
	Left Tilt	20450	829	22.93	23.00	1.02	-	-	-	-
		20525	836.5	22.95	23.00	1.01	-0.04	0.185	0.187	-
		20600	844	22.89	23.00	1.03	-	-	-	-
	Right Cheek	20450	829	22.93	23.00	1.02	-	-	-	-
		20525	836.5	22.95	23.00	1.01	0.10	0.229	0.232	-
		20600	844	22.89	23.00	1.03	-	-	-	-
	Right Tilt	20450	829	22.93	23.00	1.02	-	-	-	-
		20525	836.5	22.95	23.00	1.01	-0.03	0.182	0.184	-
		20600	844	22.89	23.00	1.03	-	-	-	-
10M QPSK 25RB	Left Cheek	20450	829	21.73	22.50	1.19	-	-	-	-
		20525	836.5	22.17	22.50	1.08	-0.11	0.191	0.206	-
		20600	844	21.89	22.50	1.15	-	-	-	-
	Left Tilt	20450	829	21.73	22.50	1.19	-	-	-	-
		20525	836.5	22.17	22.50	1.08	0.07	0.148	0.160	-
		20600	844	21.89	22.50	1.15	-	-	-	-
	Right Cheek	20450	829	21.73	22.50	1.19	-	-	-	-
		20525	836.5	22.17	22.50	1.08	-0.05	0.190	0.205	-
		20600	844	21.89	22.50	1.15	-	-	-	-
	Right Tilt	20450	829	21.73	22.50	1.19	-	-	-	-
		20525	836.5	22.17	22.50	1.08	-0.06	0.156	0.168	-
		20600	844	21.89	22.50	1.15	-	-	-	-

LTE Band 7										
Mode	Test Position	Frequency		Conducted Power (dBm)	Tune up limit (dBm)	Tune up scaling factor	Power Drift (dB)	Measured SAR(1g) (W/kg)	Report SAR(1g) (W/kg)	Plot No.
		CH	MHz							
20M QPSK 1RB	Left Cheek	20850	2510	23.20	23.50	1.07	-0.12	0.377	0.404	8
		21100	2535	23.18	23.50	1.08	-	-	-	-
		21350	2560	22.99	23.50	1.12	-	-	-	-
	Left Tilt	20850	2510	23.20	23.50	1.07	-0.06	0.316	0.338	-
		21100	2535	23.18	23.50	1.08	-	-	-	-
		21350	2560	22.99	23.50	1.12	-	-	-	-
	Right Cheek	20850	2510	23.20	23.50	1.07	0.09	0.364	0.390	-
		21100	2535	23.18	23.50	1.08	-	-	-	-
		21350	2560	22.99	23.50	1.12	-	-	-	-
	Right Tilt	20850	2510	23.20	23.50	1.07	-0.04	0.289	0.309	-
		21100	2535	23.18	23.50	1.08	-	-	-	-
		21350	2560	22.99	23.50	1.12	-	-	-	-
20M QPSK 50RB	Left Cheek	20850	2510	22.04	22.50	1.11	-	-	-	-
		21100	2535	22.04	22.50	1.11	-0.09	0.289	0.321	-
		21350	2560	21.83	22.50	1.17	-	-	-	-
	Left Tilt	20850	2510	22.04	22.50	1.11	-	-	-	-
		21100	2535	22.04	22.50	1.11	0.05	0.224	0.249	-
		21350	2560	21.83	22.50	1.17	-	-	-	-
	Right Cheek	20850	2510	22.04	22.50	1.11	-	-	-	-
		21100	2535	22.04	22.50	1.11	-0.04	0.287	0.319	-
		21350	2560	21.83	22.50	1.17	-	-	-	-
	Right Tilt	20850	2510	22.04	22.50	1.11	-	-	-	-
		21100	2535	22.04	22.50	1.11	-0.05	0.235	0.261	-
		21350	2560	21.83	22.50	1.17	-	-	-	-

WiFi 2.4G												
Mode	Test Position	Frequency		Conducted Power (dBm)	Tune-up limit (dBm)	Tune-up scaling factor	Duty Cycle	Duty Cycle Scaling Factor	Power Drift (dB)	Measured SAR(1g) (W/kg)	Report SAR(1g) (W/kg)	Plot No.
		CH	MHz									
802.11b	Left Cheek	1	2412	16.90	18.00	1.29	100.00%	1.00	-	-	-	-
		6	2437	17.51	18.00	1.12	100.00%	1.00	-0.17	0.099	0.111	-
		11	2462	17.02	18.00	1.25	100.00%	1.00	-	-	-	-
	Left Tilt	1	2412	16.90	18.00	1.29	100.00%	1.00	-	-	-	-
		6	2437	17.51	18.00	1.12	100.00%	1.00	0.13	0.084	0.094	-
		11	2462	17.02	18.00	1.25	100.00%	1.00	-	-	-	-
	Right Cheek	1	2412	16.90	18.00	1.29	100.00%	1.00	-	-	-	-
		6	2437	17.51	18.00	1.12	100.00%	1.00	-0.14	0.344	0.385	9
		11	2462	17.02	18.00	1.25	100.00%	1.00	-	-	-	-
	Right Tilt	1	2412	16.90	18.00	1.29	100.00%	1.00	-	-	-	-
		6	2437	17.51	18.00	1.12	100.00%	1.00	-0.12	0.289	0.323	-
		11	2462	17.02	18.00	1.25	100.00%	1.00	-	-	-	-

14.2. Body SAR

GSM850										
Mode	Test Position	Frequency		Conducted Power (dBm)	Tune up limit (dBm)	Tune up scaling factor	Power Drift (dB)	Measured SAR(1g) (W/kg)	Report SAR(1g) (W/kg)	Plot No.
		CH	MHz							
GPRS (3Tx slots)	Front	128	824.2	30.23	30.50	1.06	0.01	0.242	0.258	-
		190	836.6	30.16	30.50	1.08	-	-	-	-
		251	848.8	30.15	30.50	1.08	-	-	-	-
	Rear	128	824.2	30.23	30.50	1.06	-0.03	0.366	0.389	10
		190	836.6	30.16	30.50	1.08	-	-	-	-
		251	848.8	30.15	30.50	1.08	-	-	-	-

PCS1900										
Mode	Test Position	Frequency		Conducted Power (dBm)	Tune up limit (dBm)	Tune up scaling factor	Power Drift (dB)	Measured SAR(1g) (W/kg)	Report SAR(1g) (W/kg)	Plot No.
		CH	MHz							
GPRS (3Tx slots)	Front	512	1850.2	26.77	28.00	1.33	-	-	-	-
		661	1880	27.14	28.00	1.22	-	-	-	-
		810	1909.8	27.82	28.00	1.04	0.04	0.530	0.552	-
	Rear	512	1850.2	26.77	28.00	1.33	0.12	0.537	0.713	-
		661	1880	27.14	28.00	1.22	0.07	0.701	0.855	-
		810	1909.8	27.82	28.00	1.04	-0.06	0.838	0.873	11

WCDMA Band II										
Mode	Test Position	Frequency		Conducted Power (dBm)	Tune up limit (dBm)	Tune up scaling factor	Power Drift (dB)	Measured SAR(1g) (W/kg)	Report SAR(1g) (W/kg)	Plot No.
		CH	MHz							
RMC 12.2Kbps	Front	9262	1852.4	22.37	23.00	1.16	-	-	-	-
		9400	1880	22.08	23.00	1.24	-	-	-	-
		9538	1907.6	22.84	23.00	1.04	0.01	0.404	0.419	-
	Rear	9262	1852.4	22.37	23.00	1.16	-	-	-	-
		9400	1880	22.08	23.00	1.24	-	-	-	-
		9538	1907.6	22.84	23.00	1.04	-0.02	0.567	0.588	12

WCDMA Band V										
Mode	Test Position	Frequency		Conducted Power (dBm)	Tune up limit (dBm)	Tune up scaling factor	Power Drift (dB)	Measured SAR(1g) (W/kg)	Report SAR(1g) (W/kg)	Plot No.
		CH	MHz							
RMC 12.2Kbps	Front	4132	826.4	24.39	24.50	1.03	0.02	0.087	0.089	-
		4183	836.6	24.27	24.50	1.05	-	-	-	-
		4233	846.6	24.23	24.50	1.06	-	-	-	-
	Rear	4132	826.4	24.39	24.50	1.03	-0.04	0.132	0.135	13
		4183	836.6	24.27	24.50	1.05	-	-	-	-
		4233	846.6	24.23	24.50	1.06	-	-	-	-

LTE Band 2										
Mode	Test Position	Frequency		Conducted Power (dBm)	Tune up limit (dBm)	Tune up scaling factor	Power Drift (dB)	Measured SAR(1g) (W/kg)	Report SAR(1g) (W/kg)	Plot No.
		CH	MHz							
20M QPSK 1RB	Front	18700	1860	23.24	24.00	1.19	-	-	-	-
		18900	1880	23.34	24.00	1.16	-	-	-	-
		19100	1900	23.79	24.00	1.05	-0.02	0.725	0.761	-
	Rear	18700	1860	23.24	24.00	1.19	-0.14	0.847	1.009	-
		18900	1880	23.34	24.00	1.16	0.01	0.855	0.995	-
		19100	1900	23.79	24.00	1.05	0.05	0.967	1.015	14
20M QPSK 50RB	Front	18700	1860	22.12	23.00	1.22	-	-	-	-
		18900	1880	22.43	23.00	1.14	-	-	-	-
		19100	1900	22.77	23.00	1.05	-0.01	0.614	0.647	-
	Rear	18700	1860	22.12	23.00	1.22	-	-	-	-
		18900	1880	22.43	23.00	1.14	-	-	-	-
		19100	1900	22.77	23.00	1.05	0.09	0.712	0.751	-
20M QPSK 100RB	Rear	18700	1860	22.13	23.00	1.22	-	-	-	-
		18900	1880	22.52	23.00	1.12	-	-	-	-
		19100	1900	22.74	23.00	1.06	-0.17	0.702	0.745	-

LTE Band 4										
Mode	Test Position	Frequency		Conducted Power (dBm)	Tune up limit (dBm)	Tune up scaling factor	Power Drift (dB)	Measured SAR(1g) (W/kg)	Report SAR(1g) (W/kg)	Plot No.
		CH	MHz							
20M QPSK 1RB	Front	20050	1720	22.54	23.00	1.11	-0.03	0.251	0.279	-
		20175	1732.5	22.33	23.00	1.17	-	-	-	-
		20300	1745	22.29	23.00	1.18	-	-	-	-
	Rear	20050	1720	22.54	23.00	1.11	-0.13	0.539	0.599	15
		20175	1732.5	22.33	23.00	1.17	-	-	-	-
		20300	1745	22.29	23.00	1.18	-	-	-	-
20M QPSK 50RB	Front	20050	1720	21.30	22.00	1.17	-	-	-	-
		20175	1732.5	21.16	22.00	1.21	-	-	-	-
		20300	1745	21.78	22.00	1.05	-0.02	0.198	0.208	-
	Rear	20050	1720	21.30	22.00	1.17	-	-	-	-
		20175	1732.5	21.16	22.00	1.21	-	-	-	-
		20300	1745	21.78	22.00	1.05	0.12	0.452	0.476	-

LTE Band 5										
Mode	Test Position	Frequency		Conducted Power (dBm)	Tune up limit (dBm)	Tune up scaling factor	Power Drift(dB)	Measured SAR(1g) (W/kg)	Report SAR(1g) (W/kg)	Plot No.
		CH	MHz							
10M QPSK 1RB	Front	20450	829	22.93	23.00	1.02	-	-	-	-
		20525	836.5	22.95	23.00	1.01	-0.01	0.194	0.196	-
		20600	844	22.89	23.00	1.03	-	-	-	-
	Rear	20450	829	22.93	23.00	1.02	-	-	-	-
		20525	836.5	22.95	23.00	1.01	0.01	0.287	0.290	16
		20600	844	22.89	23.00	1.03	-	-	-	-
10M QPSK 25RB	Front	20450	829	21.73	22.50	1.19	-	-	-	-
		20525	836.5	22.17	22.50	1.08	0.11	0.131	0.142	-
		20600	844	21.89	22.50	1.15	-	-	-	-
	Rear	20450	829	21.73	22.50	1.19	-	-	-	-
		20525	836.5	22.17	22.50	1.08	-0.17	0.240	0.259	-
		20600	844	21.89	22.50	1.15	-	-	-	-

LTE Band 7										
Mode	Test Position	Frequency		Conducted Power (dBm)	Tune up limit (dBm)	Tune up scaling factor	Power Drift(dB)	Measured SAR(1g) (W/kg)	Report SAR(1g) (W/kg)	Plot No.
		CH	MHz							
20M QPSK 1RB	Front	20850	2510	23.20	23.50	1.07	0.08	0.451	0.484	-
		21100	2535	23.18	23.50	1.08	-	-	-	-
		21350	2560	22.99	23.50	1.12	-	-	-	-
	Rear	20850	2510	23.20	23.50	1.07	-0.13	0.669	0.717	17
		21100	2535	23.18	23.50	1.08	-	-	-	-
		21350	2560	22.99	23.50	1.12	-	-	-	-
20M QPSK 50RB	Front	20850	2510	22.04	22.50	1.11	-	-	-	-
		21100	2535	22.04	22.50	1.11	-0.07	0.280	0.311	-
		21350	2560	21.83	22.50	1.17	-	-	-	-
	Rear	20850	2510	22.04	22.50	1.11	-	-	-	-
		21100	2535	22.04	22.50	1.11	0.11	0.512	0.569	-
		21350	2560	21.83	22.50	1.17	-	-	-	-

WiFi 2.4G												
Mode	Test Position	Frequency		Conducted Power (dBm)	Tune-up limit (dBm)	Tune-up scaling factor	Duty Cycle	Duty Cycle Scaling Factor	Power Drift (dB)	Measured SAR(1g) (W/kg)	Report SAR(1g) (W/kg)	Plot No.
		CH	MHz									
802.11b	Front	1	2412	16.90	18.00	1.29	100.00%	1.00	-	-	-	-
		6	2437	17.51	18.00	1.12	100.00%	1.00	0.10	0.051	0.057	-
		11	2462	17.02	18.00	1.25	100.00%	1.00	-	-	-	-
	Rear	1	2412	16.90	18.00	1.29	100.00%	1.00	-	-	-	-
		6	2437	17.51	18.00	1.12	100.00%	1.00	-0.15	0.093	0.105	18
		11	2462	17.02	18.00	1.25	100.00%	1.00	-	-	-	-

14.3. Hotspot SAR

GSM850										
Mode	Test Position	Frequency		Conducted Power (dBm)	Tune up limit (dBm)	Tune up scaling factor	Power Drift(dB)	Measured SAR(1g) (W/kg)	Report SAR(1g) (W/kg)	Plot No.
		CH	MHz							
GPRS (3Tx slots)	Front	128	824.2	30.23	30.50	1.06	0.01	0.242	0.258	-
		190	836.6	30.16	30.50	1.08	-	-	-	-
		251	848.8	30.15	30.50	1.08	-	-	-	-
	Rear	128	824.2	30.23	30.50	1.06	-0.03	0.366	0.389	10
		190	836.6	30.16	30.50	1.08	-	-	-	-
		251	848.8	30.15	30.50	1.08	-	-	-	-
	Left	128	824.2	30.23	30.50	1.06	0.02	0.225	0.239	-
	Right	128	824.2	30.23	30.50	1.06	-0.01	0.215	0.229	-
	Top	128	824.2	30.23	30.50	1.06	-	-	-	-
Bottom	128	824.2	30.23	30.50	1.06	-0.01	0.148	0.157	-	

PCS1900										
Mode	Test Position	Frequency		Conducted Power (dBm)	Tune up limit (dBm)	Tune up scaling factor	Power Drift(dB)	Measured SAR(1g) (W/kg)	Report SAR(1g) (W/kg)	Plot No.
		CH	MHz							
GPRS (3Tx slots)	Front	512	1850.2	26.77	28.00	1.33	-	-	-	-
		661	1880	27.14	28.00	1.22	-	-	-	-
		810	1909.8	27.82	28.00	1.04	0.04	0.530	0.552	-
	Rear	512	1850.2	26.77	28.00	1.33	0.12	0.537	0.713	-
		661	1880	27.14	28.00	1.22	0.07	0.701	0.855	-
		810	1909.8	27.82	28.00	1.04	-0.06	0.838	0.873	11
	Left	810	1909.8	27.82	28.00	1.04	0.03	0.516	0.538	-
	Right	810	1909.8	27.82	28.00	1.04	-0.02	0.493	0.514	-
	Top	810	1909.8	27.82	28.00	1.04	-	-	-	-
Bottom	810	1909.8	27.82	28.00	1.04	-0.02	0.654	0.682	-	

WCDMA Band II										
Mode	Test Position	Frequency		Conducted Power (dBm)	Tune up limit (dBm)	Tune up scaling factor	Power Drift(dB)	Measured SAR(1g) (W/kg)	Report SAR(1g) (W/kg)	Plot No.
		CH	MHz							
RMC 12.2K	Front	9262	1852.4	22.37	23.00	1.16	-	-	-	-
		9400	1880	22.08	23.00	1.24	-	-	-	-
		9538	1907.6	22.84	23.00	1.04	0.01	0.404	0.419	-
	Rear	9262	1852.4	22.37	23.00	1.16	-	-	-	-
		9400	1880	22.08	23.00	1.24	-	-	-	-
		9538	1907.6	22.84	23.00	1.04	-0.02	0.567	0.588	12
	Left	9538	1907.6	22.84	23.00	1.04	0.01	0.349	0.362	-
	Right	9538	1907.6	22.84	23.00	1.04	-0.01	0.333	0.345	-
	Top	9538	1907.6	22.84	23.00	1.04	-	-	-	-
Bottom	9538	1907.6	22.84	23.00	1.04	-0.01	0.443	0.460	-	

WCDMA Band V										
Mode	Test Position	Frequency		Conducted Power (dBm)	Tune up limit (dBm)	Tune up scaling factor	Power Drift(dB)	Measured SAR(1g) (W/kg)	Report SAR(1g) (W/kg)	Plot No.
		CH	MHz							
RMC 12.2K	Front	4132	826.4	24.39	24.50	1.03	0.02	0.087	0.089	-
		4183	836.6	24.27	24.50	1.05	-	-	-	-
		4233	846.6	24.23	24.50	1.06	-	-	-	-
	Rear	4132	826.4	24.39	24.50	1.03	-0.04	0.132	0.135	13
		4183	836.6	24.27	24.50	1.05	-	-	-	-
		4233	846.6	24.23	24.50	1.06	-	-	-	-
	Left	4132	826.4	24.39	24.50	1.03	0.02	0.081	0.083	-
	Right	4132	826.4	24.39	24.50	1.03	-0.01	0.078	0.080	-
	Top	4132	826.4	24.39	24.50	1.03	-	-	-	-
Bottom	4132	826.4	24.39	24.50	1.03	-0.01	0.054	0.055	-	

LTE Band 2										
Mode	Test Position	Frequency		Conducted Power (dBm)	Tune up limit (dBm)	Tune up scaling factor	Power Drift(dB)	Measured SAR(1g) (W/kg)	Report SAR(1g) (W/kg)	Plot No.
		CH	MHz							
20M QPSK 1RB	Front	18700	1860	23.24	24.00	1.19	-	-	-	-
		18900	1880	23.34	24.00	1.16	-	-	-	-
		19100	1900	23.79	24.00	1.05	-0.02	0.725	0.761	-
	Rear	18700	1860	23.24	24.00	1.19	-0.14	0.847	1.009	-
		18900	1880	23.34	24.00	1.16	0.01	0.855	0.995	-
		19100	1900	23.79	24.00	1.05	0.05	0.967	1.015	14
	Left	19100	1900	23.79	24.00	1.05	-0.03	0.559	0.587	-
	Right	19100	1900	23.79	24.00	1.05	0.02	0.423	0.444	-
	Top	19100	1900	23.79	24.00	1.05	-	-	-	-
Bottom	19100	1900	23.79	24.00	1.05	0.05	0.606	0.636	-	
20M QPSK 50RB	Front	18700	1860	22.12	23.00	1.22	-	-	-	-
		18900	1880	22.43	23.00	1.14	-	-	-	-
		19100	1900	22.77	23.00	1.05	-0.01	0.614	0.647	-
	Rear	18700	1860	22.12	23.00	1.22	-	-	-	-
		18900	1880	22.43	23.00	1.14	-	-	-	-
		19100	1900	22.77	23.00	1.05	0.09	0.712	0.751	-
	Left	19100	1900	22.77	23.00	1.05	-0.02	0.461	0.486	-
	Right	19100	1900	22.77	23.00	1.05	-0.02	0.287	0.303	-
	Top	19100	1900	22.77	23.00	1.05	-	-	-	-
Bottom	19100	1900	22.77	23.00	1.05	0.09	0.450	0.475	-	
20M QPSK 100RB	Rear	18700	1860	22.13	23.00	1.22	-	-	-	-
		18900	1880	22.52	23.00	1.12	-	-	-	-
		19100	1900	22.74	23.00	1.06	-0.17	0.702	0.745	-

LTE Band 4										
Mode	Test Position	Frequency		Conducted Power (dBm)	Tune up limit (dBm)	Tune up scaling factor	Power Drift(dB)	Measured SAR(1g) (W/kg)	Report SAR(1g) (W/kg)	Plot No.
		CH	MHz							
20M QPSK 1RB	Front	20050	1720	22.54	23.00	1.11	-0.03	0.251	0.279	-
		20175	1732.5	22.33	23.00	1.17	-	-	-	-
		20300	1745	22.29	23.00	1.18	-	-	-	-
	Rear	20050	1720	22.54	23.00	1.11	-0.13	0.539	0.599	15
		20175	1732.5	22.33	23.00	1.17	-	-	-	-
		20300	1745	22.29	23.00	1.18	-	-	-	-
	Left	20050	1720.0	22.54	23.00	1.11	0.10	0.326	0.362	-
	Right	20050	1720.0	22.54	23.00	1.11	-0.02	0.221	0.246	-
	Top	20050	1720.0	22.54	23.00	1.11	-	-	-	-
Bottom	20050	1720.0	22.54	23.00	1.11	-0.05	0.330	0.367	-	
20M QPSK 50RB	Front	20050	1720	21.30	22.00	1.17	-	-	-	-
		20175	1732.5	21.16	22.00	1.21	-	-	-	-
		20300	1745	21.78	22.00	1.05	-0.02	0.198	0.208	-
	Rear	20050	1720	21.30	22.00	1.17	-	-	-	-
		20175	1732.5	21.16	22.00	1.21	-	-	-	-
		20300	1745	21.78	22.00	1.05	0.12	0.452	0.476	-
	Left	20300	1745.0	21.78	22.00	1.05	-0.08	0.308	0.324	-
	Right	20300	1745.0	21.78	22.00	1.05	0.02	0.180	0.189	-
	Top	20300	1745.0	21.78	22.00	1.05	-	-	-	-
Bottom	20300	1745.0	21.78	22.00	1.05	0.03	0.299	0.315	-	

LTE Band 5										
Mode	Test Position	Frequency		Conducted Power (dBm)	Tune up limit (dBm)	Tune up scaling factor	Power Drift(dB)	Measured SAR(1g) (W/kg)	Report SAR(1g) (W/kg)	Plot No.
		CH	MHz							
10M QPSK 1RB	Front	20450	829	22.93	23.00	1.02	-	-	-	-
		20525	836.5	22.95	23.00	1.01	-0.01	0.194	0.196	-
		20600	844	22.89	23.00	1.03	-	-	-	-
	Rear	20450	829	22.93	23.00	1.02	-	-	-	-
		20525	836.5	22.95	23.00	1.01	0.01	0.287	0.290	16
		20600	844	22.89	23.00	1.03	-	-	-	-
	Left	20525	836.5	22.95	23.00	1.01	0.12	0.203	0.205	-
	Right	20525	836.5	22.95	23.00	1.01	0.00	0.125	0.126	-
	Top	20525	836.5	22.95	23.00	1.01	-	-	-	-
Bottom	20525	836.5	22.95	23.00	1.01	0.09	0.174	0.176	-	
10M QPSK 25RB	Front	20450	829	21.73	22.50	1.19	-	-	-	-
		20525	836.5	22.17	22.50	1.08	0.11	0.131	0.142	-
		20600	844	21.89	22.50	1.15	-	-	-	-
	Rear	20450	829	21.73	22.50	1.19	-	-	-	-
		20525	836.5	22.17	22.50	1.08	-0.17	0.240	0.259	-
		20600	844	21.89	22.50	1.15	-	-	-	-
	Left	20525	836.5	22.17	22.50	1.08	0.13	0.158	0.171	-
	Right	20525	836.5	22.17	22.50	1.08	-0.06	0.104	0.113	-
	Top	20525	836.5	22.17	22.50	1.08	-	-	-	-
Bottom	20525	836.5	22.17	22.50	1.08	-0.02	0.131	0.142	-	

LTE Band 7										
Mode	Test Position	Frequency		Conducted Power (dBm)	Tune up limit (dBm)	Tune up scaling factor	Power Drift(dB)	Measured SAR(1g) (W/kg)	Report SAR(1g) (W/kg)	Plot No.
		CH	MHz							
20M QPSK 1RB	Front	20850	2510	23.20	23.50	1.07	0.08	0.451	0.484	-
		21100	2535	23.18	23.50	1.08	-	-	-	-
		21350	2560	22.99	23.50	1.12	-	-	-	-
	Rear	20850	2510	23.20	23.50	1.07	-0.13	0.669	0.717	17
		21100	2535	23.18	23.50	1.08	-	-	-	-
		21350	2560	22.99	23.50	1.12	-	-	-	-
	Left	20850	2510	23.20	23.50	1.07	0.05	0.473	0.507	-
	Right	20850	2510	23.20	23.50	1.07	-0.05	0.290	0.311	-
	Top	20850	2510	23.20	23.50	1.07	-	-	-	-
Bottom	20850	2510	23.20	23.50	1.07	-0.08	0.405	0.434	-	
20M QPSK 50RB	Front	20850	2510	22.04	22.50	1.11	-	-	-	-
		21100	2535	22.04	22.50	1.11	-0.07	0.280	0.311	-
		21350	2560	21.83	22.50	1.17	-	-	-	-
	Rear	20850	2510	22.04	22.50	1.11	-	-	-	-
		21100	2535	22.04	22.50	1.11	0.11	0.512	0.569	-
		21350	2560	21.83	22.50	1.17	-	-	-	-
	Left	21100	2535	22.04	22.50	1.11	-0.08	0.338	0.376	-
	Right	21100	2535	22.04	22.50	1.11	0.04	0.223	0.248	-
	Top	21100	2535	22.04	22.50	1.11	-	-	-	-
Bottom	21100	2535	22.04	22.50	1.11	0.02	0.280	0.312	-	

WiFi 2.4G												
Mode	Test Position	Frequency		Conducted Power (dBm)	Tune-up limit (dBm)	Tune-up scaling factor	Duty Cycle	Duty Cycle Scaling Factor	Power Drift (dB)	Measured SAR(1g) (W/kg)	Report SAR(1g) (W/kg)	Plot No.
		CH	MHz									
802.11b	Front	1	2412	16.90	18.00	1.29	100.00%	1.00	-	-	-	-
		6	2437	17.51	18.00	1.12	100.00%	1.00	0.10	0.051	0.057	-
		11	2462	17.02	18.00	1.25	100.00%	1.00	-	-	-	-
	Rear	1	2412	16.90	18.00	1.29	100.00%	1.00	-	-	-	-
		6	2437	17.51	18.00	1.12	100.00%	1.00	-0.15	0.093	0.105	18
		11	2462	17.02	18.00	1.25	100.00%	1.00	-	-	-	-
	Left	6	2437	17.51	18.00	1.12	100.00%	1.00	0.11	0.062	0.069	-
	Right	6	2437	17.51	18.00	1.12	100.00%	1.00	-	-	-	-
	Top	6	2437	17.51	18.00	1.12	100.00%	1.00	-0.02	0.071	0.079	-
Bottom	6	2437	17.51	18.00	1.12	100.00%	1.00	-	-	-	-	

SAR Test Data Plots to the Appendix A.

15. SAR Measurement Variability

In accordance with published RF Exposure KDB 865664 D01 SAR measurement 100 MHz to 6 GHz. These additional measurements are repeated after the completion of all measurements requiring the same head or body tissue-equivalent medium in a frequency band. The test device should be returned to ambient conditions (normal room temperature) with the battery fully charged before it is re-mounted on the device holder for the repeated measurement(s) to minimize any unexpected variations in the repeated results.

- 1) Repeated measurement is not required when the original highest measured SAR is <0.8 or 2 W/kg (1-g or 10-g respectively); steps 2) through 4) do not apply.
- 2) When the original highest measured SAR is ≥ 0.8 or 2 W/kg (1-g or 10-g respectively), repeat that measurement once.
- 3) Perform a second repeated measurement only if the ratio of largest to smallest SAR for the original and first repeated measurements is > 1.20 or when the original or repeated measurement is ≥ 1.45 or 3.6 W/kg (~ 10% from the 1-g or 10-g respective SAR limit).
- 4) Perform a third repeated measurement only if the original, first, or second repeated measurement is ≥ 1.5 or 3.75 W/kg (1-g or 10-g respectively) and the ratio of largest to smallest SAR for the original, first and second repeated measurements is > 1.20 .

Band	Test Position	Frequency		Highest Measured SAR (W/kg)	First Repeated		Second Repeated	
		CH	MHz		Measured SAR(W/kg)	Largest to Smallest SAR Ratio	Measured SAR(W/kg)	Largest to Smallest SAR Ratio
PCS1900 GPRS 3Tx slots	Rear	810	1909.8	0.838	0.821	1.02	N/A	N/A
LTE Band 2	Rear	19100	1900	0.967	0.955	1.01	N/A	N/A

16. Simultaneous Transmission analysis

No.	Simultaneous Transmission Configurations	Head	Body-worn	Hotspot	Note
1	GSM(voice) + Bluetooth (data)	Yes	Yes		
2	GSM(voice) + WIFI (data)	Yes	Yes		
3	WCDMA(voice) + Bluetooth (data)	Yes	Yes		
4	WCDMA(voice) + WIFI (data)	Yes	Yes		
5	GPRS (data) + Bluetooth (data)	Yes	Yes	NA	
6	GPRS (data) + WIFI (data)	Yes	Yes	Yes	
7	WCDMA (data) + Bluetooth (data)	Yes	Yes	NA	
8	WCDMA (data) + WIFI (data)	Yes	Yes	Yes	
9	LTE + Bluetooth (data)	Yes	Yes	NA	
10	LTE + WIFI (data)	Yes	Yes	Yes	

General note:

1. WLAN and Bluetooth share the same antenna, and cannot transmit simultaneously.
2. EUT will choose either GSM or WCDMA LTE according to the network signal condition; therefore, they will not operate simultaneously at any moment.
3. The reported SAR summation is calculated based on the same configuration and test position
4. For simultaneous transmission analysis, Bluetooth SAR is estimated per KDB 447498 D01 based on the formula below
 - a) $[(\text{max. Power of channel, including tune-up tolerance, mW}) / (\text{min. test separation distance, mm})] * [\sqrt{f(\text{GHz})}/x] \text{W/kg}$ for test separation distances $\leq 50\text{mm}$; when $x=7.5$ for 1-g SAR, and $x=18.75$ for 10-g SAR.
 - b) When the minimum separation distance is $<5\text{mm}$, the distance is used 5mm to determine SAR test exclusion
 - c) 0.4 W/kg for 1-g SAR and 1.0W/kg for 10-g SAR, when the test separation distances is $>50\text{mm}$.

Bluetooth Max power	Exposure position	Head	Body-worn
	Test separation	0mm	10mm
6.50dBm	Estimated SAR (W/kg)	0.186	0.093

16.1. Head

PCE+ WLAN DTS					
WWAN Band		Exposure Position	Max SAR (W/kg)		Summed SAR (W/kg)
			PCE	WLAN DTS	
GSM	GSM850	Left Cheek	0.391	0.111	0.502
		Left Tilted	0.299	0.094	0.393
		Right Cheek	0.421	0.385	0.806
		Right Tilted	0.319	0.323	0.642
	PCS1900	Left Cheek	0.173	0.111	0.284
		Left Tilted	0.140	0.094	0.234
		Right Cheek	0.167	0.385	0.552
		Right Tilted	0.131	0.323	0.454
WCDMA	Band II	Left Cheek	0.157	0.111	0.268
		Left Tilted	0.129	0.094	0.223
		Right Cheek	0.118	0.385	0.503
		Right Tilted	0.094	0.323	0.417
	Band V	Left Cheek	0.107	0.111	0.218
		Left Tilted	0.082	0.094	0.176
		Right Cheek	0.116	0.385	0.501
		Right Tilted	0.088	0.323	0.411
LTE	B2 1RB	Left Cheek	0.333	0.111	0.444
		Left Tilted	0.272	0.094	0.366
		Right Cheek	0.324	0.385	0.709
		Right Tilted	0.258	0.323	0.581
	B2 50RB	Left Cheek	0.264	0.111	0.375
		Left Tilted	0.232	0.094	0.326
		Right Cheek	0.244	0.385	0.629
		Right Tilted	0.208	0.323	0.531
	B4 1RB	Left Cheek	0.299	0.111	0.410
		Left Tilted	0.223	0.094	0.317
		Right Cheek	0.290	0.385	0.675
		Right Tilted	0.225	0.323	0.548
	B4 50RB	Left Cheek	0.238	0.111	0.349
		Left Tilted	0.188	0.094	0.282
		Right Cheek	0.216	0.385	0.601
		Right Tilted	0.153	0.323	0.476

LTE	B5 1RB	Left Cheek	0.224	0.111	0.335
		Left Tilted	0.187	0.094	0.281
		Right Cheek	0.232	0.385	0.617
		Right Tilted	0.184	0.323	0.507
	B5 25RB	Left Cheek	0.206	0.111	0.317
		Left Tilted	0.160	0.094	0.254
		Right Cheek	0.205	0.385	0.590
		Right Tilted	0.168	0.323	0.491
	B7 1RB	Left Cheek	0.404	0.111	0.515
		Left Tilted	0.338	0.094	0.432
		Right Cheek	0.390	0.385	0.775
		Right Tilted	0.309	0.323	0.632
	B7 50RB	Left Cheek	0.321	0.111	0.432
		Left Tilted	0.249	0.094	0.343
		Right Cheek	0.319	0.385	0.704
		Right Tilted	0.261	0.323	0.584

PCE+ Bluetooth					
WWAN Band		Exposure Position	Max SAR (W/kg)		Summed SAR (W/kg)
			PCE	Bluetooth	
GSM	GSM850	Left Cheek	0.391	0.186	0.577
		Left Tilted	0.299	0.186	0.485
		Right Cheek	0.421	0.186	0.607
		Right Tilted	0.319	0.186	0.505
	PCS1900	Left Cheek	0.173	0.186	0.359
		Left Tilted	0.140	0.186	0.326
		Right Cheek	0.167	0.186	0.353
		Right Tilted	0.131	0.186	0.317
WCDMA	Band II	Left Cheek	0.157	0.186	0.343
		Left Tilted	0.129	0.186	0.315
		Right Cheek	0.118	0.186	0.304
		Right Tilted	0.094	0.186	0.280
	Band V	Left Cheek	0.107	0.186	0.293
		Left Tilted	0.082	0.186	0.268
		Right Cheek	0.116	0.186	0.302
		Right Tilted	0.088	0.186	0.274
LTE	B2 1RB	Left Cheek	0.333	0.186	0.519
		Left Tilted	0.272	0.186	0.458
		Right Cheek	0.324	0.186	0.510
		Right Tilted	0.258	0.186	0.444
	B2 50RB	Left Cheek	0.264	0.186	0.450
		Left Tilted	0.232	0.186	0.418
		Right Cheek	0.244	0.186	0.430
		Right Tilted	0.208	0.186	0.394
	B4 1RB	Left Cheek	0.299	0.186	0.485
		Left Tilted	0.223	0.186	0.409
		Right Cheek	0.290	0.186	0.476
		Right Tilted	0.225	0.186	0.411
	B4 50RB	Left Cheek	0.238	0.186	0.424
		Left Tilted	0.188	0.186	0.374
		Right Cheek	0.216	0.186	0.402
		Right Tilted	0.153	0.186	0.339

LTE	B5 1RB	Left Cheek	0.224	0.186	0.410
		Left Tilted	0.187	0.186	0.373
		Right Cheek	0.232	0.186	0.418
		Right Tilted	0.184	0.186	0.370
	B5 25RB	Left Cheek	0.206	0.186	0.392
		Left Tilted	0.160	0.186	0.346
		Right Cheek	0.205	0.186	0.391
		Right Tilted	0.168	0.186	0.354
	B7 1RB	Left Cheek	0.404	0.186	0.590
		Left Tilted	0.338	0.186	0.524
		Right Cheek	0.390	0.186	0.576
		Right Tilted	0.309	0.186	0.495
	B7 50RB	Left Cheek	0.321	0.186	0.507
		Left Tilted	0.249	0.186	0.435
		Right Cheek	0.319	0.186	0.505
		Right Tilted	0.261	0.186	0.447

16.2. Body-worn

PCE + WLAN DTS					
WWAN Band		Exposure Position	Max SAR (W/kg)		Summed SAR
			PCE	WLAN DTS	(W/kg)
GSM	GSM850	Front	0.258	0.057	0.315
		Rear	0.389	0.105	0.494
	PCS1900	Front	0.552	0.057	0.609
		Rear	0.873	0.105	0.978
WCDMA	Band II	Front	0.419	0.057	0.476
		Rear	0.588	0.105	0.693
	Band V	Front	0.089	0.057	0.146
		Rear	0.135	0.105	0.240
LTE	B2 1RB	Front	0.761	0.057	0.818
		Rear	1.015	0.105	1.120
	B2 50RB	Front	0.647	0.057	0.704
		Rear	0.751	0.105	0.856
	B4 1RB	Front	0.279	0.057	0.336
		Rear	0.599	0.105	0.704
	B4 50RB	Front	0.208	0.057	0.265
		Rear	0.476	0.105	0.581
	B5 1RB	Front	0.196	0.057	0.253
		Rear	0.290	0.105	0.395
	B5 25RB	Front	0.142	0.057	0.199
		Rear	0.259	0.105	0.364
	B7 1RB	Front	0.484	0.057	0.541
		Rear	0.717	0.105	0.822
	B7 50RB	Front	0.311	0.057	0.368
		Rear	0.569	0.105	0.674

PCE + Bluetooth					
WWAN Band		Exposure Position	Max SAR (W/kg)		Summed SAR
			PCE	Bluetooth	(W/kg)
GSM	GSM850	Front	0.258	0.093	0.351
		Rear	0.389	0.093	0.482
	PCS1900	Front	0.552	0.093	0.645
		Rear	0.873	0.093	0.966
WCDMA	Band II	Front	0.419	0.093	0.512
		Rear	0.588	0.093	0.681
	Band V	Front	0.089	0.093	0.182
		Rear	0.135	0.093	0.228
LTE	B2 1RB	Front	0.761	0.093	0.854
		Rear	1.015	0.093	1.108
	B2 50RB	Front	0.647	0.093	0.740
		Rear	0.751	0.093	0.844
	B4 1RB	Front	0.279	0.093	0.372
		Rear	0.599	0.093	0.692
	B4 50RB	Front	0.208	0.093	0.301
		Rear	0.476	0.093	0.569
	B5 1RB	Front	0.196	0.093	0.289
		Rear	0.290	0.093	0.383
	B5 25RB	Front	0.142	0.093	0.235
		Rear	0.259	0.093	0.352
	B7 1RB	Front	0.484	0.093	0.577
		Rear	0.717	0.093	0.810
	B7 50RB	Front	0.311	0.093	0.404
		Rear	0.569	0.093	0.662

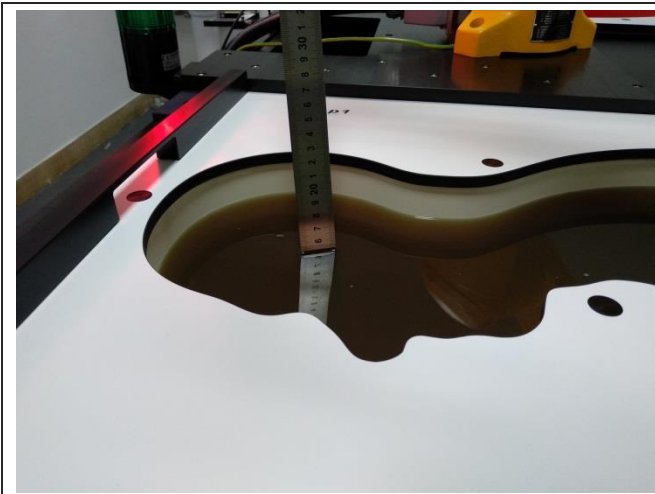
16.3. Hotspot

PCE + WLAN DTS					
WWAN Band		Exposure Position	Max SAR (W/kg)		Summed SAR
			PCE	WLAN DTS	(W/kg)
GSM	GSM850	Front	0.258	0.057	0.315
		Rear	0.389	0.105	0.494
		Left side	0.239	0.069	0.308
		Right side	0.229	-	0.229
		Top side	-	0.079	0.079
		Bottom side	0.157	-	0.157
	PCS1900	Front	0.552	0.057	0.609
		Rear	0.873	0.105	0.978
		Left side	0.538	0.069	0.607
		Right side	0.514	-	0.514
		Top side	-	0.079	0.079
		Bottom side	0.682	-	0.682
WCDMA	Band II	Front	0.419	0.057	0.476
		Rear	0.588	0.105	0.693
		Left side	0.362	0.069	0.431
		Right side	0.345	-	0.345
		Top side	-	0.079	0.079
		Bottom side	0.460	-	0.460
	Band V	Front	0.089	0.057	0.146
		Rear	0.135	0.105	0.240
		Left side	0.083	0.069	0.152
		Right side	0.080	-	0.080
		Top side	-	0.079	0.079
		Bottom side	0.055	-	0.055

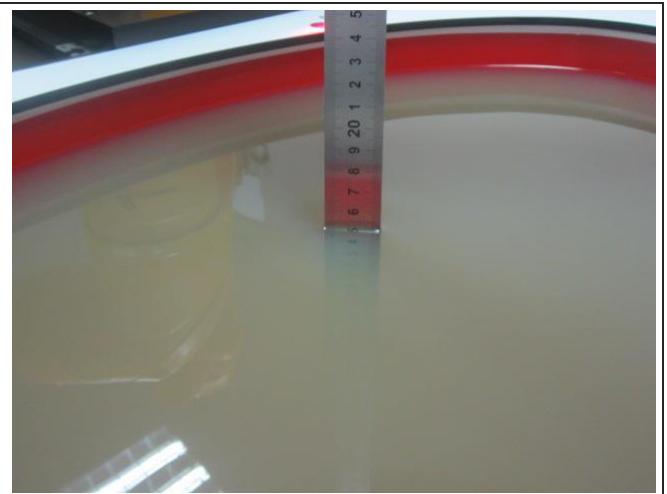
LTE	B2 1RB	Front	0.761	0.057	0.818
		Rear	1.015	0.105	1.120
		Left side	0.587	0.069	0.656
		Right side	0.444	-	0.444
		Top side	-	0.079	0.079
		Bottom side	0.636	-	0.636
	B2 50RB	Front	0.647	0.057	0.704
		Rear	0.751	0.105	0.856
		Left side	0.486	0.069	0.555
		Right side	0.303	-	0.303
		Top side	-	0.079	0.079
		Bottom side	0.475	-	0.475
	B4 1RB	Front	0.279	0.057	0.336
		Rear	0.599	0.105	0.704
		Left side	0.362	0.069	0.431
		Right side	0.246	-	0.246
		Top side	-	0.079	0.079
		Bottom side	0.367	-	0.367
	B4 50RB	Front	0.208	0.057	0.265
		Rear	0.476	0.105	0.581
		Left side	0.324	0.069	0.393
		Right side	0.189	0-	0.189
		Top side	-	0.079	0.079
		Bottom side	0.315	-	0.315
B5 1RB	Front	0.196	0.057	0.253	
	Rear	0.290	0.105	0.395	
	Left side	0.205	0.069	0.274	
	Right side	0.126	-	0.126	
	Top side	-	0.079	0.079	
	Bottom side	0.176	-	0.176	
B5 25RB	Front	0.142	0.057	0.199	
	Rear	0.259	0.105	0.364	
	Left side	0.171	0.069	0.240	
	Right side	0.113	-	0.113	
	Top side	-	0.079	0.079	
	Bottom side	0.142	-	0.142	

LTE	B7 1RB	Front	0.484	0.057	0.541
		Rear	0.717	0.105	0.822
		Left side	0.507	0.069	0.576
		Right side	0.311	-	0.311
		Top side	-	0.079	0.079
		Bottom side	0.434	-	0.434
	B7 50RB	Front	0.311	0.057	0.368
		Rear	0.569	0.105	0.674
		Left side	0.376	0.069	0.445
		Right side	0.248	-	0.248
		Top side	-	0.079	0.079
		Bottom side	0.312	-	0.312

17. TestSetup Photos



Liquid depth in the Head phantom



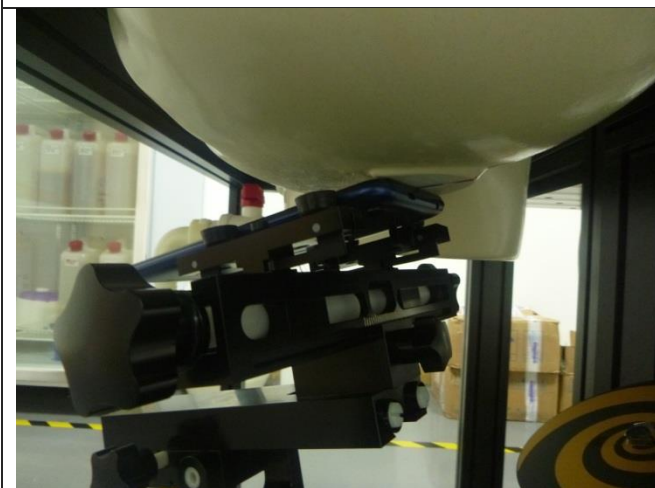
Liquid depth in the Body phantom



Left Head Touch



Right Head Touch



Left Head Tilt (15°)



Right Head Tilt (15°)



Body-worn Front (10mm)



Body-worn Rear(10mm)



Front (10mm)



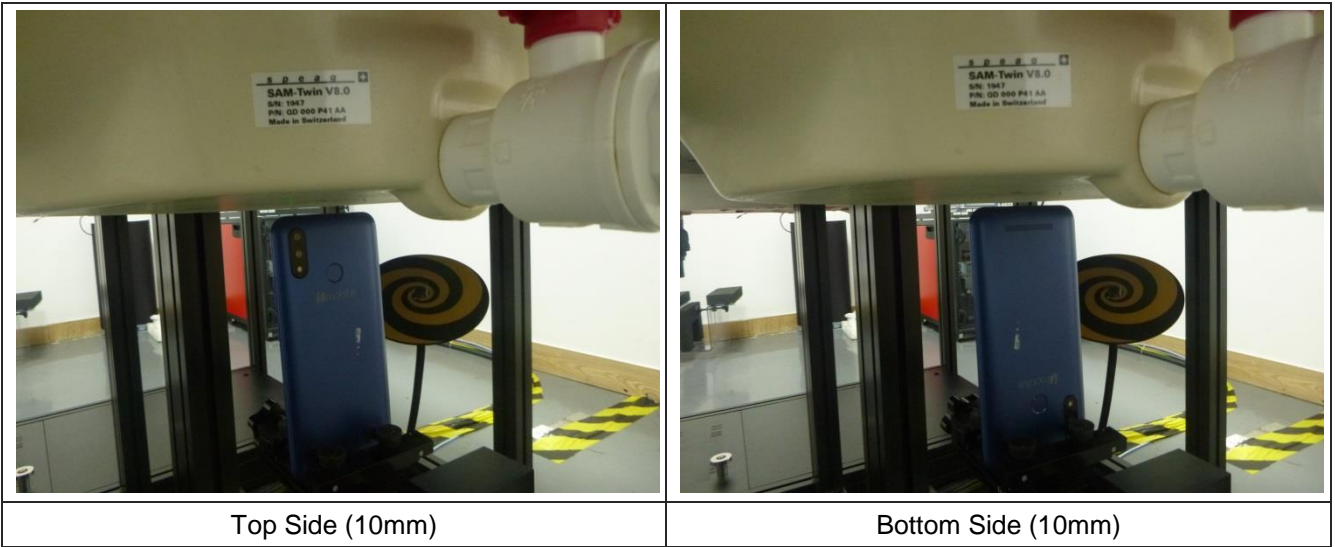
Rear (10mm)



Left Side (10mm)



Right Side (10mm)



18. External and Internal Photos of the EUT

Please reference to the report No.: CHTEW19080125

-----End of Report-----