

FCC SAR EVALUATION REPORT

In accordance with the requirements of
FCC 47 CFR Part 2(2.1093), ANSI/IEEE C95.1-1992 and
IEEE Std 1528-2013

Product Name : Mobile phone

Trademark : Bmobile

Model Name : AX1092

Family Model : N/A

Report No. : S18121903501001

FCC ID : ZSW-30-082

Prepared for

b mobile HK Limited

Flat 18; 14/F Block 1; Golden Industrial Building; 16-26 KwaiTak Street; Kwai Chung;
New Territories; Hong Kong, China

Prepared by

Shenzhen NTEK Testing Technology Co., Ltd.

1/F, Building E, Fenda Science Park, Sanwei Community, Xixiang Street,
Bao'an District, Shenzhen 518126 P.R.China.

Tel.: +86-755-6115 6588 Fax.: +86-755-6115 6599

Website: <http://www.ntek.org.cn>

TEST RESULT CERTIFICATION

Applicant's name.....: b mobile HK Limited
Address.....: Flat 18; 14/F Block 1; Golden Industrial Building;16-26 KwaiTak Street; Kwai Chung; New Territories; Hong Kong, China

Manufacturer's Name.....: b mobile HK Limited
Address.....: Flat 18; 14/F Block 1; Golden Industrial Building;16-26 KwaiTak Street; Kwai Chung; New Territories; Hong Kong, China

Product description

Product name.....: Mobile phone
Trademark.....: Bmobile
Model Name.....: AX1092
Family Model.....: N/A

Standards.....: FCC 47 CFR Part 2(2.1093)
ANSI/IEEE C95.1-1992
IEEE Std 1528-2013
Published RF exposure KDB procedures

This device described above has been tested by Shenzhen NTEK. In accordance with the measurement methods and procedures specified in IEEE Std 1528-2013 and KDB 865664 D01. Testing has shown that this device is capable of compliance with localized specific absorption rate (SAR) specified in FCC 47 CFR Part 2(2.1093) and ANSI/IEEE C95.1-1992. The test results in this report apply only to the tested sample of the stated device/equipment. Other similar device/equipment will not necessarily produce the same results due to production tolerance and measurement uncertainties.

This report shall not be reproduced except in full, without the written approval of Shenzhen NTEK, this document may be altered or revised by Shenzhen NTEK, personal only, and shall be noted in the revision of the document.

Date of Test

Date (s) of performance of tests.....: Dec. 25, 2018 ~ Jan. 08, 2019
Date of Issue.....: Jan. 09, 2019
Test Result.....: Pass

Prepared By (Test Engineer) : Cheng Jiawen (Cheng Jiawen)

Approved By (Lab Manager) : Sam Chen (Sam Chen)

※ ※ Revision History ※ ※

REV.	DESCRIPTION	ISSUED DATE	REMARK
Rev.1.0	Initial Test Report Release	Jan. 09, 2019	Cheng Jiawen

TABLE OF CONTENTS

1.	General Information	6
1.1.	RF exposure limits.....	6
1.2.	Statement of Compliance	7
1.3.	EUT Description	8
1.4.	Test specification(s)	10
1.5.	Ambient Condition.....	10
2.	SAR Measurement System	11
2.1.	SATIMO SAR Measurement Set-up Diagram	11
2.2.	Robot	12
2.3.	E-Field Probe.....	13
2.3.1.	E-Field Probe Calibration	13
2.4.	SAM phantoms	14
2.4.1.	Technical Data	15
2.5.	Device Holder	16
2.6.	Test Equipment List	17
3.	SAR Measurement Procedures	19
3.1.	Power Reference	19
3.2.	Area scan & Zoom scan.....	19
3.3.	Description of interpolation/extrapolation scheme	21
3.4.	Volumetric Scan	21
3.5.	Power Drift	21
4.	System Verification Procedure	22
4.1.	Tissue Verification	22
4.1.1.	Tissue Dielectric Parameter Check Results	23
4.2.	System Verification Procedure	24
4.2.1.	System Verification Results.....	25
5.	SAR Measurement variability and uncertainty	26
5.1.	SAR measurement variability.....	26
5.2.	SAR measurement uncertainty	26
6.	RF Exposure Positions.....	27
6.1.	Ear and handset reference point	27
6.2.	Definition of the cheek position	27
6.3.	Definition of the tilt position	29
6.4.	Body Worn Accessory	29
6.5.	Wireless Router Devices	30
7.	RF Output Power	31
7.1.	Maximum Tune-up Limit.....	31
7.2.	GSM Conducted Power	32
7.3.	WCDMA Conducted Power	32

- 7.4. LTE Conducted Power33
- 7.5. WLAN & Bluetooth Output Power43
 - 7.5.1. Output Power Results Of WLAN43
 - 7.5.2. Output Power Results Of Bluetooth.....43
- 8. Antenna Location.....44
- 9. Stand-alone SAR test exclusion.....45
- 10. SAR Results46
 - 10.1. SAR measurement results46
 - 10.1.1. SAR measurement Result of GSM850.....46
 - 10.1.2. SAR measurement Result of GSM1900.....46
 - 10.1.3. SAR measurement Result of WCDMA Band V.....47
 - 10.1.4. SAR measurement Result of WCDMA Band II.....48
 - 10.1.5. SAR measurement Result of LTE Band V49
 - 10.1.6. SAR measurement Result of LTE Band IV50
 - 10.1.7. SAR measurement Result of LTE Band II52
 - 10.1.8. SAR measurement Result of LTE Band VII54
 - 10.1.9. SAR measurement Result of WLAN 2.4G56
 - 10.2. SAR Summation Scenario.....56
- 11. Appendix A. Photo documentation63
- 12. Appendix B. System Check Plots.....64
- 13. Appendix C. Plots of High SAR Measurement.....85
- 14. Appendix D. Calibration Certificate122

1. General Information

1.1. RF exposure limits

(A).Limits for Occupational/Controlled Exposure (W/kg)

Whole-Body	Partial-Body	Hands, Wrists, Feet and Ankles
0.4	8.0	20.0

(B).Limits for General Population/Uncontrolled Exposure (W/kg)

Whole-Body	Partial-Body	Hands, Wrists, Feet and Ankles
0.08	1.6	4.0

NOTE: **Whole-Body SAR** is averaged over the entire body, **partial-body SAR** is averaged over any 1 gram of tissue defined as a tissue volume in the shape of a cube. **SAR for hands, wrists, feet and ankles** is averaged over any 10 grams of tissue defined as a tissue volume in the shape of a cube.

Occupational/Controlled Environments:

Are defined as locations where there is exposure that may be incurred by people who are aware of the potential for exposure, (i.e. as a result of employment or occupation).

General Population/Uncontrolled Environments:

Are defined as locations where there is the exposure of individuals who have no knowledge or control of their exposure.

NOTE
 HEAD AND TRUNK LIMIT
 1.6 W/kg
 APPLIED TO THIS EUT

1.2. Statement of Compliance

The maximum results of Specific Absorption Rate (SAR) found during testing for AX1092 are as follows.

Band	Max Reported SAR Value(W/kg)			Max Simultaneous Tx
	1-g Head	1-g Body-Worn (Separation distance of 10mm)	1-g Hotspot (Separation distance of 10mm)	
GSM 850	0.541	0.599	0.599	1.013
GSM 1900	0.119	0.698	0.782	
WCDMA Band V	0.174	0.202	0.202	
WCDMA Band II	0.121	0.593	0.734	
LTE Band V	0.161	0.184	0.184	
LTE Band IV	0.201	0.428	0.428	
LTE Band II	0.098	0.452	0.550	
LTE Band VII	0.139	0.362	0.362	
WLAN 2.4G	0.360	0.315	0.315	

Note: The Max Simultaneous Tx is calculated based on the same configuration and test position. This device is in compliance with Specific Absorption Rate (SAR) for general population/uncontrolled exposure limits (1.6 W/kg) specified in FCC 47 CFR Part 2(2.1093) and ANSI/IEEE C95.1-1992, and had been tested in accordance with the measurement methods and procedures specified in IEEE Std 1528-2013 & KDB 865664 D01.

1.3. EUT Description

Device Information			
Product Name	Mobile phone		
Trade Name	Bmobile		
Model Name	AX1092		
Family Model	N/A		
FCC ID	ZSW-30-082		
Device Phase	Identical Prototype		
Exposure Category	General population / Uncontrolled environment		
Antenna	FPCB Antenna		
Battery Information	DC 3.8V, 2500mAh		
Device Operating Configurations			
Supporting Mode(s)	GSM 850/1900, WCDMA Band V/II, LTE Band V/IV/II/VII, WLAN 2.4G, Bluetooth		
Test Modulation	GSM(GMSK/8PSK), WCDMA(QPSK), LTE(QPSK/16QAM), WLAN(DSSSS/OFDM), Bluetooth(GFSK, $\pi/4$ -DQPSK, 8DPSK)		
Device Class	B		
Operating Frequency Range(s)	Band	Tx (MHz)	Rx (MHz)
	GSM 850	824-849	869-894
	GSM 1900	1850-1910	1930-1990
	WCDMA Band V	824-849	869-894
	WCDMA Band II	1850-1910	1930-1990
	LTE Band V	824-849	869-894
	LTE Band IV	1710-1755	2110-2155
	LTE Band II	1850-1910	1930-1990
	LTE Band VII	2500-2570	2620-2690
	WLAN 2.4G	2412-2462	
	Bluetooth	2402-2480	
GPRS Multislot Class(12)	Max Number of Timeslots in Uplink		4
	Max Number of Timeslots in Downlink		4
	Max Total Timeslot		5
EDGE Multislot Class(12)	Max Number of Timeslots in Uplink		4
	Max Number of Timeslots in Downlink		4
	Max Total Timeslot		5
Power Class	4, tested with power level 5(GSM 850)		
	1, tested with power level 0(GSM 1900)		
	3, tested with power control "all 1"(WCDMA Band V)		
	3, tested with power control "all 1"(WCDMA Band II)		
	3, tested with power control all Max.(LTE Band V)		

	3, tested with power control all Max.(LTE Band IV)
	3, tested with power control all Max.(LTE Band II)
	3, tested with power control all Max.(LTE Band VII)
Test Channels (low-mid-high)	128-189-251(GSM 850)
	512-661-810(GSM 1900)
	4132-4182-4233(WCDMA Band V)
	9262-9400-9538(WCDMA Band II)
	20407-20525-20643(LTE Band V BW=1.4MHz)
	20415-20525-20635(LTE Band V BW=3MHz)
	20425-20525-20625(LTE Band V BW=5MHz)
	20450-20525-20600(LTE Band V BW=10MHz)
	19957-20175-20393(LTE Band IV BW=1.4MHz)
	19965-20175-20385(LTE Band IV BW=3MHz)
	19975-20175-20375(LTE Band IV BW=5MHz)
	20000-20175-20350(LTE Band IV BW=10MHz)
	20025-20175-20325(LTE Band IV BW=15MHz)
	20050-20175-20300(LTE Band IV BW=20MHz)
	18607-18900-19193(LTE Band II BW=1.4MHz)
	18615-18900-19185(LTE Band II BW=3MHz)
	18625-18900-19175(LTE Band II BW=5MHz)
	18650-18900-19150(LTE Band II BW=10MHz)
	18675-18900-19125(LTE Band II BW=15MHz)
	18700-18900-19100(LTE Band II BW=20MHz)
	20775-21100-21425(LTE Band VII BW=5MHz)
	20800-21100-21400(LTE Band VII BW=10MHz)
	20825-21100-21375(LTE Band VII BW=15MHz)
20850-21100-21350(LTE Band VII BW=20MHz)	
1-6-11(WLAN 2.4G)	

1.4. Test specification(s)

FCC 47 CFR Part 2(2.1093)
ANSI/IEEE C95.1-1992
IEEE Std 1528-2013
KDB 865664 D01 SAR measurement 100 MHz to 6 GHz
KDB 865664 D02 RF Exposure Reporting
KDB 447498 D01 General RF Exposure Guidance
KDB 248227 D01 802.11 Wi-Fi SAR
KDB 941225 D01 3G SAR Procedures
KDB 941225 D05 SAR for LTE Devices
KDB 941225 D06 Hotspot SAR
KDB 648474 D04 Handset SAR

1.5. Ambient Condition

Ambient temperature	20°C – 24°C
Relative Humidity	30% – 70%

2.2. Robot

The SATIMO SAR system uses the high precision robots from KUKA. For the 6-axis controller system, the robot controller version (KUKA) from KUKA is used. The KUKA robot series have many features that are important for our application:



- High precision (repeatability ± 0.03 mm)
- High reliability (industrial design)
- Jerk-free straight movements
- Low ELF interference (the closed metallic construction shields against motor control fields)

2.3. E-Field Probe

This E-field detection probe is composed of three orthogonal dipoles linked to special Schottky diodes with low detection thresholds. The probe allows the measurement of electric fields in liquids such as the one defined in the IEEE and CENELEC standards.

For the measurements the Specific Dosimetric E-Field Probe SN 08/16 EPGO287 with following specifications is used



- Dynamic range: 0.01-100 W/kg
 - Tip Diameter: 2.5 mm
 - Distance between probe tip and sensor center: 1 mm
 - Distance between sensor center and the inner phantom surface: 2 mm (repeatability better than ± 1 mm).
 - Probe linearity: ± 0.08 dB
 - Axial isotropy: 0.06 dB
 - Hemispherical Isotropy: 0.08 dB
 - Calibration range: 650MHz to 5900MHz for head & body simulating liquid.
 - Lower detection limit: 7mW/kg
- Angle between probe axis (evaluation axis) and surface normal line: less than 30° .

2.3.1. E-Field Probe Calibration

Each probe needs to be calibrated according to a dosimetric assessment procedure with accuracy better than $\pm 10\%$. The spherical isotropy shall be evaluated and within ± 0.25 dB. The sensitivity parameters (Norm X, Norm Y, and Norm Z), the diode compression parameter (DCP) and the conversion factor (Conv F) of the probe are tested. The calibration data can be referred to appendix D of this report.

2.4. SAM phantoms

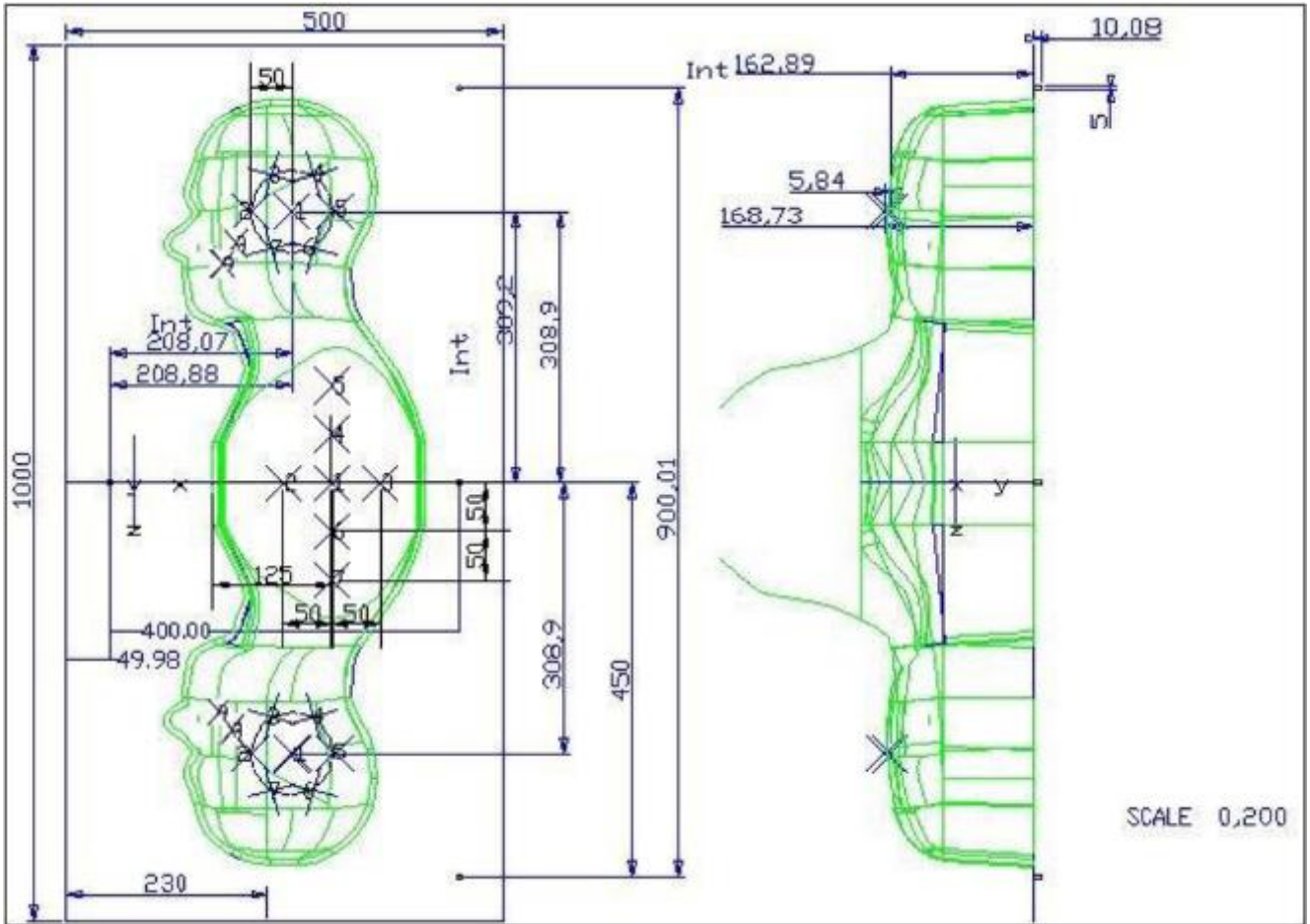
Photo of SAM phantom SN 16/15 SAM119



The SAM phantom is used to measure the SAR relative to people exposed to electro-magnetic field radiated by mobile phones.

2.4.1. Technical Data

Serial Number	Shell thickness	Filling volume	Dimensions	Positionner Material	Permittivity	Loss Tangent
SN 16/15 SAM119	2 mm ±0.2 mm	27 liters	Length:1000 mm Width:500 mm Height:200 mm	Gelcoat with fiberglass	3.4	0.02

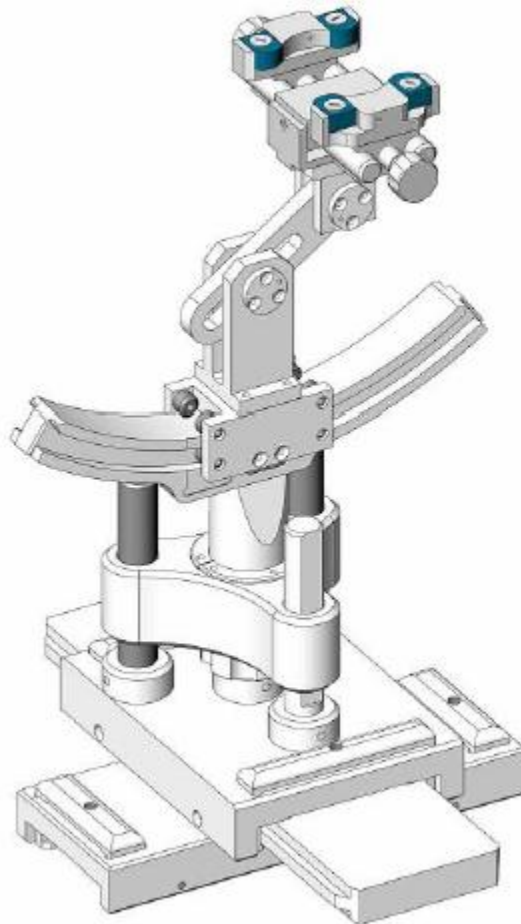


Serial Number	Left Head(mm)		Right Head(mm)		Flat Part(mm)	
	1	2	1	2	1	2
SN 16/15 SAM119	2	2.02	2	2.08	1	2.09
	3	2.05	3	2.06	2	2.06
	4	2.07	4	2.07	3	2.08
	5	2.08	5	2.08	4	2.10
	6	2.05	6	2.07	5	2.10
	7	2.05	7	2.05	6	2.07
	8	2.07	8	2.06	7	2.07
	9	2.08	9	2.06	-	-

The test, based on ultrasonic system, allows measuring the thickness with an accuracy of 10 µm.

2.5. Device Holder

The positioning system allows obtaining cheek and tilting position with a very good accuracy. In compliance with CENELEC, the tilt angle uncertainty is lower than 1 degree.



Serial Number	Holder Material	Permittivity	Loss Tangent
SN 16/15 MSH100	Delrin	3.7	0.005

2.6. Test Equipment List

This table gives a complete overview of the SAR measurement equipment.

Devices used during the test described are marked

	Manufacturer	Name of Equipment	Type/Model	Serial Number	Calibration	
					Last Cal.	Due Date
<input checked="" type="checkbox"/>	MVG	E FIELD PROBE	SSE2	SN 08/16 EPGO287	Sep. 17, 2018	Sep. 16, 2019
<input type="checkbox"/>	MVG	750 MHz Dipole	SID750	SN 03/15 DIP 0G750-355	Apr. 19, 2018	Apr. 18, 2021
<input checked="" type="checkbox"/>	MVG	835 MHz Dipole	SID835	SN 03/15 DIP 0G835-347	Apr. 19, 2018	Apr. 18, 2021
<input type="checkbox"/>	MVG	900 MHz Dipole	SID900	SN 03/15 DIP 0G900-348	Apr. 19, 2018	Apr. 18, 2021
<input checked="" type="checkbox"/>	MVG	1800 MHz Dipole	SID1800	SN 03/15 DIP 1G800-349	Apr. 19, 2018	Apr. 18, 2021
<input checked="" type="checkbox"/>	MVG	1900 MHz Dipole	SID1900	SN 03/15 DIP 1G900-350	Apr. 19, 2018	Apr. 18, 2021
<input type="checkbox"/>	MVG	2000 MHz Dipole	SID2000	SN 03/15 DIP 2G000-351	Apr. 19, 2018	Apr. 18, 2021
<input checked="" type="checkbox"/>	MVG	2450 MHz Dipole	SID2450	SN 03/15 DIP 2G450-352	Apr. 19, 2018	Apr. 18, 2021
<input checked="" type="checkbox"/>	MVG	2600 MHz Dipole	SID2600	SN 03/15 DIP 2G600-356	Apr. 19, 2018	Apr. 18, 2021
<input type="checkbox"/>	MVG	5000 MHz Dipole	SWG5500	SN 13/14 WGA 33	Apr. 19, 2018	Apr. 18, 2021
<input checked="" type="checkbox"/>	MVG	Liquid measurement Kit	SCLMP	SN 21/15 OCPG 72	NCR	NCR
<input checked="" type="checkbox"/>	MVG	Power Amplifier	N.A	AMPLISAR_28/14_003	NCR	NCR
<input checked="" type="checkbox"/>	KEITHLEY	Millivoltmeter	2000	4072790	NCR	NCR
<input checked="" type="checkbox"/>	R&S	Universal radio communication tester	CMU200	117858	Aug. 05, 2018	Aug. 04, 2019
<input checked="" type="checkbox"/>	R&S	Wideband radio communication tester	CMW500	103917	Oct. 08, 2018	Oct. 07, 2019
<input checked="" type="checkbox"/>	HP	Network Analyzer	8753D	3410J01136	Aug. 05, 2018	Aug. 04, 2019
<input checked="" type="checkbox"/>	Agilent	PSG Analog Signal Generator	E8257D	MY51110112	Aug. 05, 2018	Aug. 04, 2019

<input checked="" type="checkbox"/>	Agilent	Power meter	E4419B	MY45102538	Aug. 05, 2018	Aug. 04, 2019
<input checked="" type="checkbox"/>	Agilent	Power sensor	E9301A	MY41495644	Aug. 05, 2018	Aug. 04, 2019
<input checked="" type="checkbox"/>	Agilent	Power sensor	E9301A	US39212148	Aug. 05, 2018	Aug. 04, 2019
<input checked="" type="checkbox"/>	MCLI/USA	Directional Coupler	CB11-20	0D2L51502	Aug. 05, 2018	Aug. 04, 2019

3. SAR Measurement Procedures

The measurement procedures are as follows:

<Conducted power measurement>

- (a) For WWAN power measurement, use base station simulator to configure EUT WWAN transmission in conducted connection with RF cable, at maximum power in each supported wireless interface and frequency band.
- (b) Read the WWAN RF power level from the base station simulator.
- (c) For WLAN/Bluetooth power measurement, use engineering software to configure EUT WLAN/Bluetooth continuously transmission, at maximum RF power in each supported wireless interface and frequency band.
- (d) Connect EUT RF port through RF cable to the power meter, and measure WLAN/Bluetooth output power.

<SAR measurement>

- (a) Use base station simulator to configure EUT WWAN transmission in radiated connection, and engineering software to configure EUT WLAN/Bluetooth continuously transmission, at maximum RF power, in the highest power channel.
- (b) Place the EUT in the positions as Appendix A demonstrates.
- (c) Set scan area, grid size and other setting on the OPENSAR software.
- (d) Measure SAR results for the highest power channel on each testing position.
- (e) Find out the largest SAR result on these testing positions of each band.
- (f) Measure SAR results for other channels in worst SAR testing position if the reported SAR of highest power channel is larger than 0.8 W/kg.

According to the test standard, the recommended procedure for assessing the peak spatial-average SAR value consists of the following steps:

- (a) Power reference measurement
- (b) Area scan
- (c) Zoom scan
- (d) Power drift measurement

3.1. Power Reference

The Power Reference Measurement and Power Drift Measurements are for monitoring the power drift of the device under test in the batch process. The minimum distance of probe sensors to surface determines the closest measurement point to phantom surface. This distance cannot be smaller than the distance of sensor calibration points to probe tip as defined in the probe properties.

3.2. Area scan & Zoom scan

The area scan is a 2D scan to find the hot spot location on the DUT. The zoom scan is a 3D scan above the hot spot to calculate the 1g and 10g SAR value.

Measurement of the SAR distribution with a grid of 8 to 16 mm * 8 to 16 mm and a constant distance to the inner surface of the phantom. Since the sensors cannot directly measure at the inner phantom surface, the values between the sensors and the inner phantom surface are extrapolated. With these values the area of the maximum SAR is calculated by an interpolation scheme. Around this point, a cube of 30 * 30 * 30 mm or 32 * 32 * 32 mm is assessed by measuring 5 or 8 * 5 or 8 * 4 or 5 mm. With these data, the peak spatial-average SAR value can be calculated.

From the scanned SAR distribution, identify the position of the maximum SAR value, in addition identify the positions of any local maxima with SAR values within 2 dB of the maximum value that will not be within the zoom scan of other peaks; additional peaks shall be measured only when the primary peak is within 2 dB of the SAR compliance limit (e.g., 1 W/kg for 1,6 W/kg 1 g limit, or 1,26 W/kg for 2 W/kg, 10 g limit).

Area scan & Zoom scan scan parameters extracted from FCC KDB 865664 D01 SAR measurement 100 MHz to 6 GHz.

		≤ 3 GHz	> 3 GHz
Maximum distance from closest measurement point (geometric center of probe sensors) to phantom surface		5 ± 1 mm	$\frac{1}{2} \cdot \delta \cdot \ln(2) \pm 0.5$ mm
Maximum probe angle from probe axis to phantom surface normal at the measurement location		30° ± 1°	20° ± 1°
Maximum area scan spatial resolution: Δx_{Area} , Δy_{Area}		≤ 2 GHz: ≤ 15 mm 2 – 3 GHz: ≤ 12 mm	3 – 4 GHz: ≤ 12 mm 4 – 6 GHz: ≤ 10 mm
		When the x or y dimension of the test device, in the measurement plane orientation, is smaller than the above, the measurement resolution must be ≤ the corresponding x or y dimension of the test device with at least one measurement point on the test device.	
Maximum zoom scan spatial resolution: Δx_{Zoom} , Δy_{Zoom}		≤ 2 GHz: ≤ 8 mm 2 – 3 GHz: ≤ 5 mm*	3 – 4 GHz: ≤ 5 mm* 4 – 6 GHz: ≤ 4 mm*
Maximum zoom scan spatial resolution, normal to phantom surface	uniform grid: $\Delta z_{Zoom}(n)$	≤ 5 mm	3 – 4 GHz: ≤ 4 mm 4 – 5 GHz: ≤ 3 mm 5 – 6 GHz: ≤ 2 mm
	graded grid	$\Delta z_{Zoom}(1)$: between 1 st two points closest to phantom surface	≤ 4 mm 3 – 4 GHz: ≤ 3 mm 4 – 5 GHz: ≤ 2.5 mm 5 – 6 GHz: ≤ 2 mm
		$\Delta z_{Zoom}(n>1)$: between subsequent points	≤ 1.5 · $\Delta z_{Zoom}(n-1)$
Minimum zoom scan volume	x, y, z	≥ 30 mm	3 – 4 GHz: ≥ 28 mm 4 – 5 GHz: ≥ 25 mm 5 – 6 GHz: ≥ 22 mm

Note: δ is the penetration depth of a plane-wave at normal incidence to the tissue medium; see draft standard IEEE P1528-2011 for details.

* When zoom scan is required and the *reported* SAR from the *area scan based 1-g SAR estimation* procedures of KDB 447498 is ≤ 1.4 W/kg, ≤ 8 mm, ≤ 7 mm and ≤ 5 mm zoom scan resolution may be applied, respectively, for 2 GHz to 3 GHz, 3 GHz to 4 GHz and 4 GHz to 6 GHz.

3.3. Description of interpolation/extrapolation scheme

The local SAR inside the phantom is measured using small dipole sensing elements inside a probe body. The probe tip must not be in contact with the phantom surface in order to minimise measurements errors, but the highest local SAR will occur at the surface of the phantom.

An extrapolation is used to determine these highest local SAR values. The extrapolation is based on a fourth-order least-square polynomial fit of measured data. The local SAR value is then extrapolated from the liquid surface with a 1 mm step.

The measurements have to be performed over a limited time (due to the duration of the battery) so the step of measurement is high. It could vary between 5 and 8 mm. To obtain an accurate assessment of the maximum SAR averaged over 10 grams and 1 gram requires a very fine resolution in the three dimensional scanned data array.

3.4. Volumetric Scan

The volumetric scan consists of a full 3D scan over a specific area. This 3D scan is useful for multi Tx SAR measurement. Indeed, it is possible with OpenSAR to add, point by point, several volumetric scans to calculate the SAR value of the combined measurement as it is defined in the standard IEEE1528 and IEC62209.

3.5. Power Drift

All SAR testing is under the EUT installed with a full charged battery and transmit maximum output power. In OpenSAR measurement software, the power reference measurement and power drift measurement procedures are used for monitoring the power drift of EUT during SAR test. Both these procedures measure the field at a specified reference position before and after the SAR testing. The software will calculate the field difference in V/m. If the power drifts more than $\pm 5\%$, the SAR will be retested.

4. System Verification Procedure

4.1. Tissue Verification

The following tissue formulations are provided for reference only as some of the parameters have not been thoroughly verified. The composition of ingredients may be modified accordingly to achieve the desired target tissue parameters required for routine SAR evaluation.

Ingredients (% of weight)	Head Tissue									
	750	835	900	1800	1900	2000	2450	2600	5200	5800
Frequency Band (MHz)										
Water	34.40	34.40	34.40	55.36	55.36	57.87	57.87	57.87	65.53	65.53
NaCl	0.79	0.79	0.79	0.35	0.35	0.16	0.16	0.16	0.00	0.00
1,2-Propanediol	64.81	64.81	64.81	0.00	0.00	0.00	0.00	0.00	0.00	0.00
Triton X-100	0.00	0.00	0.00	30.45	30.45	19.97	19.97	19.97	24.24	24.24
DGBE	0.00	0.00	0.00	13.84	13.84	22.00	22.00	22.00	10.23	10.23
Ingredients (% of weight)	Body Tissue									
	750	835	900	1800	1900	2000	2450	2600	5200	5800
Frequency Band (MHz)										
Water	50.30	50.30	50.30	69.91	69.91	71.88	71.88	71.88	79.54	79.54
NaCl	0.60	0.60	0.60	0.13	0.13	0.16	0.16	0.16	0.00	0.00
1,2-Propanediol	49.10	49.10	49.10	0.00	0.00	0.00	0.00	0.00	0.00	0.00
Triton X-100	0.00	0.00	0.00	9.99	9.99	19.97	19.97	19.97	11.24	11.24
DGBE	0.00	0.00	0.00	19.97	19.97	7.99	7.99	7.99	9.22	9.22

4.1.1. Tissue Dielectric Parameter Check Results

The simulating liquids should be checked at the beginning of a series of SAR measurements to determine if the dielectric parameters are within the tolerances of the specified target values. The measured conductivity and relative permittivity should be within $\pm 5\%$ of the target values.

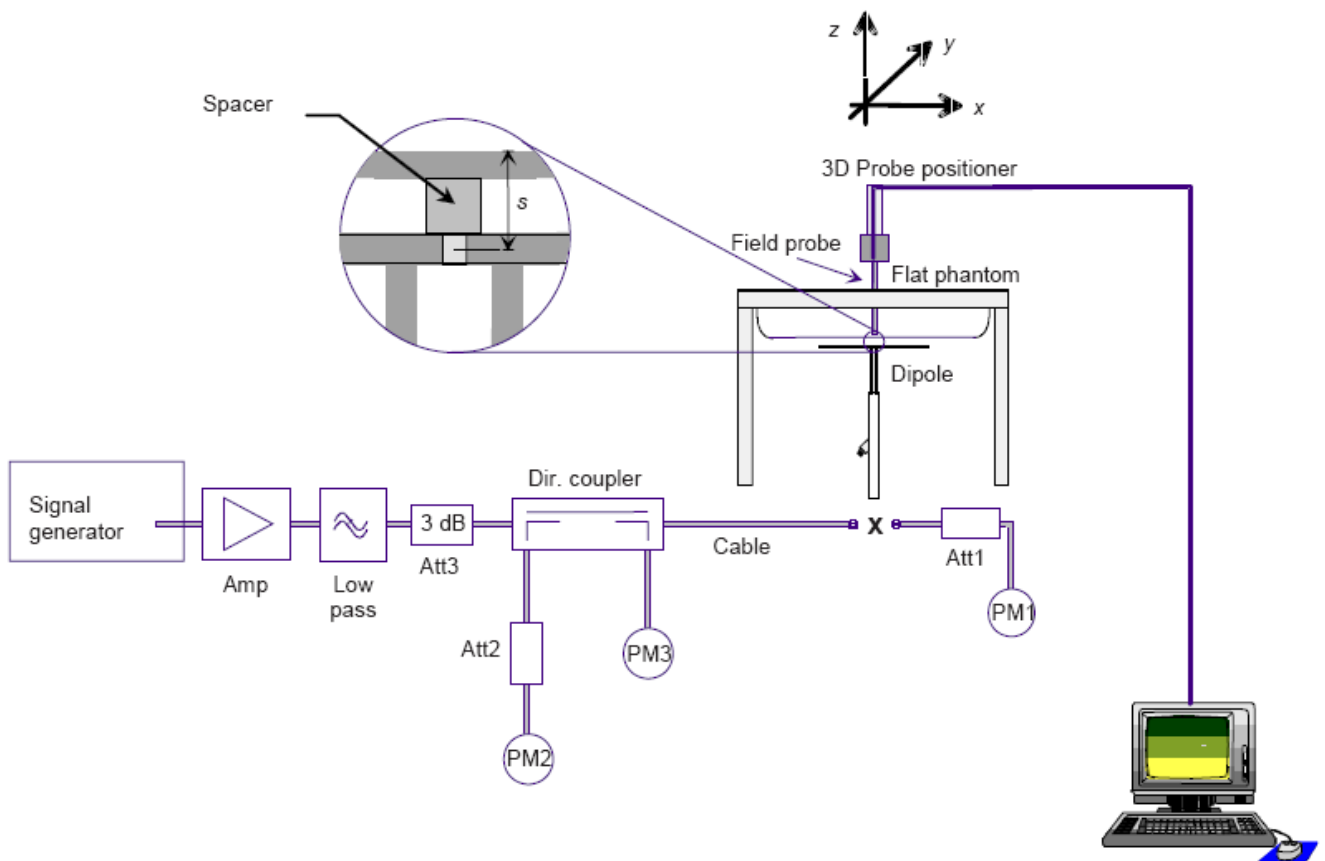
Tissue Type	Measured Frequency (MHz)	Target Tissue		Measured Tissue		Liquid Temp.	Test Date
		ϵ_r ($\pm 5\%$)	σ (S/m) ($\pm 5\%$)	ϵ_r	σ (S/m)		
Head 850	835	41.50 (39.43~43.57)	0.90 (0.86~0.94)	41.62	0.90	21.7 °C	Dec. 29, 2018
Body 850	835	55.20 (52.44~57.96)	0.97 (0.92~1.01)	54.89	1.00	21.5 °C	Dec. 25, 2018
Head 1800	1800	40.00 (38.00~42.00)	1.40 (1.33~1.47)	39.49	1.40	21.6 °C	Jan. 02, 2019
Body 1800	1800	53.30 (50.64~55.96)	1.52 (1.44~1.59)	53.80	1.52	21.3 °C	Jan. 02, 2019
Head 1900	1900	40.00 (38.00~42.00)	1.40 (1.33~1.47)	40.01	1.41	21.6 °C	Jan. 02, 2019
Body 1900	1900	53.30 (50.64~55.96)	1.52 (1.44~1.59)	53.18	1.54	21.5 °C	Jan. 02, 2019
Head 2450	2450	39.20 (37.24~41.16)	1.80 (1.71~1.89)	39.99	1.79	21.7 °C	Dec. 29, 2018
Body 2450	2450	52.70 (50.07~55.33)	1.95 (1.85~2.04)	52.70	1.97	21.3 °C	Dec. 28, 2018
Head 2600	2600	39.00 (37.05~40.95)	1.96 (1.86~2.05)	39.02	1.96	21.7 °C	Dec. 29, 2018
Body 2600	2600	52.50 (49.88~55.13)	2.16 (2.05~2.27)	53.08	2.16	21.4 °C	Dec. 29, 2018

NOTE: The dielectric parameters of the tissue-equivalent liquid should be measured under similar ambient conditions and within 2 °C of the conditions expected during the SAR evaluation to satisfy protocol requirements.

4.2. System Verification Procedure

The system verification is performed for verifying the accuracy of the complete measurement system and performance of the software. The dipole is connected to the signal source consisting of signal generator and amplifier via a directional coupler, N-connector cable and adaption to SMA. It is fed with a power of 100mW (below 5GHz) or 100mW (above 5GHz). To adjust this power a power meter is used. The power sensor is connected to the cable before the system verification to measure the power at this point and do adjustments at the signal generator. At the outputs of the directional coupler both return loss as well as forward power are controlled during the system verification to make sure that emitted power at the dipole is kept constant. This can also be checked by the power drift measurement after the test (result on plot).

The system verification is shown as below picture:



4.2.1. System Verification Results

Comparing to the original SAR value provided by SATIMO, the verification data should be within its specification of $\pm 10\%$. Below table shows the target SAR and measured SAR after normalized to 1W input power. The table below indicates the system performance verification can meet the variation criterion and the plots can be referred to Appendix B of this report.

System Verification	Target SAR (1W) ($\pm 10\%$)		Measured SAR (Normalized to 1W)		Liquid Temp.	Test Date
	1-g (W/Kg)	10-g (W/Kg)	1-g (W/Kg)	10-g (W/Kg)		
835MHz Head	9.56 (8.60~10.51)	6.22 (5.60~6.84)	9.56	6.11	21.7 °C	Dec. 29, 2018
835MHz Body	9.48 (8.53~10.42)	6.29 (5.66~6.91)	10.21	5.99	21.5 °C	Dec. 25, 2018
1800MHz Head	38.40 (34.56~42.24)	20.10 (18.09~22.11)	40.84	21.21	21.6 °C	Jan. 02, 2019
1800MHz Body	37.04 (33.34~40.74)	20.26 (18.23~22.29)	40.11	21.00	21.3 °C	Jan. 02, 2019
1900MHz Head	39.70 (35.73~43.67)	20.50 (18.45~22.55)	37.05	19.14	21.6 °C	Jan. 02, 2019
1900MHz Body	38.43 (34.59~42.27)	20.34 (18.31~22.37)	40.60	20.45	21.5 °C	Jan. 02, 2019
2450MHz Head	52.40 (47.16~57.64)	24.00 (21.60~26.40)	51.57	24.78	21.7 °C	Dec. 29, 2018
2450MHz Body	49.32 (44.39~54.25)	22.89 (20.60~25.17)	50.27	24.16	21.3 °C	Dec. 28, 2018
2600MHz Head	55.30 (49.77~60.83)	24.60 (22.14~27.06)	50.13	25.73	21.7 °C	Dec. 29, 2018
2600MHz Body	52.95 (47.66~58.25)	23.64 (21.28~26.00)	55.41	24.12	21.4 °C	Dec. 29, 2018

5. SAR Measurement variability and uncertainty

5.1. SAR measurement variability

Per KDB865664 D01 SAR measurement 100 MHz to 6 GHz, SAR measurement variability must be assessed for each frequency band, which is determined by the SAR probe calibration point and tissue-equivalent medium used for the device measurements. The additional measurements are repeated after the completion of all measurements requiring the same head or body tissue-equivalent medium in a frequency band. The test device should be returned to ambient conditions (normal room temperature) with the battery fully charged before it is re-mounted on the device holder for the repeated measurement(s) to minimize any unexpected variations in the repeated results.

- 1) Repeated measurement is not required when the original highest measured SAR is < 0.80 W/kg; steps 2) through 4) do not apply.
- 2) When the original highest measured SAR is ≥ 0.80 W/kg, repeat that measurement once.
- 3) Perform a second repeated measurement only if the ratio of largest to smallest SAR for the original and first repeated measurements is > 1.20 or when the original or repeated measurement is ≥ 1.45 W/kg (~ 10% from the 1-g SAR limit).
- 4) Perform a third repeated measurement only if the original, first or second repeated measurement is ≥ 1.5 W/kg and the ratio of largest to smallest SAR for the original, first and second repeated measurements is > 1.20 .

5.2. SAR measurement uncertainty

Per KDB865664 D01 SAR Measurement 100 MHz to 6 GHz, when the highest measured 1-g SAR within a frequency band is < 1.5 W/kg, the extensive SAR measurement uncertainty analysis described in IEEE Std 1528-2013 is not required in SAR reports submitted for equipment approval. The equivalent ratio (1.5/1.6) is applied to extremity and occupational exposure conditions.

6. RF Exposure Positions

6.1. Ear and handset reference point

Figure 6.1.1 shows the front, back, and side views of the SAM phantom. The center-of-mouth reference point is labeled “M”, the left ear reference point (ERP) is marked “LE”, and the right ERP is marked “RE”.



Fig 6.1.1 Front, back, and side views of SAM phantom

6.2. Definition of the cheek position

1. Define two imaginary lines on the handset, the vertical centerline and the horizontal line. The vertical centerline passes through two points on the front side of the handset: the midpoint of the width w_t of the handset at the level of the acoustic output (point A in Figure 6.2.1 and Figure 6.2.2), and the midpoint of the width w_b of the bottom of the handset (point B). The horizontal line is perpendicular to the vertical centerline and passes through the center of the acoustic output (see Figure 6.2.1). The two lines intersect at point A. Note that for many handsets, point A coincides with the center of the acoustic output; however, the acoustic output may be located elsewhere on the horizontal line. Also note that the vertical centerline is not necessarily parallel to the front face of the handset (see Figure 6.2.2), especially for clamshell handsets, handsets with flip covers, and other irregularly-shaped handsets.
2. Position the handset close to the surface of the phantom such that point A is on the (virtual) extension of the line passing through points RE and LE on the phantom (see Figure 6.2.3), such that the plane defined by the vertical centerline and the horizontal line of the handset is approximately parallel to the sagittal plane of the phantom.
3. Translate the handset towards the phantom along the line passing through RE and LE until handset point A touches the pinna at the ERP
4. While maintaining the handset in this plane, rotate it around the LE-RE line until the vertical centerline is in the plane normal to the plane containing B-M and N-F lines, i.e., the Reference Plane.
5. Rotate the handset around the vertical centerline until the handset (horizontal line) is parallel to the N-F line.

6. While maintaining the vertical centerline in the Reference Plane, keeping point A on the line passing through RE and LE, and maintaining the handset contact with the pinna, rotate the handset about the N-F line until any point on the handset is in contact with a phantom point below the pinna on the cheek. See Figure 6.2.3. The actual rotation angles should be documented in the test report.

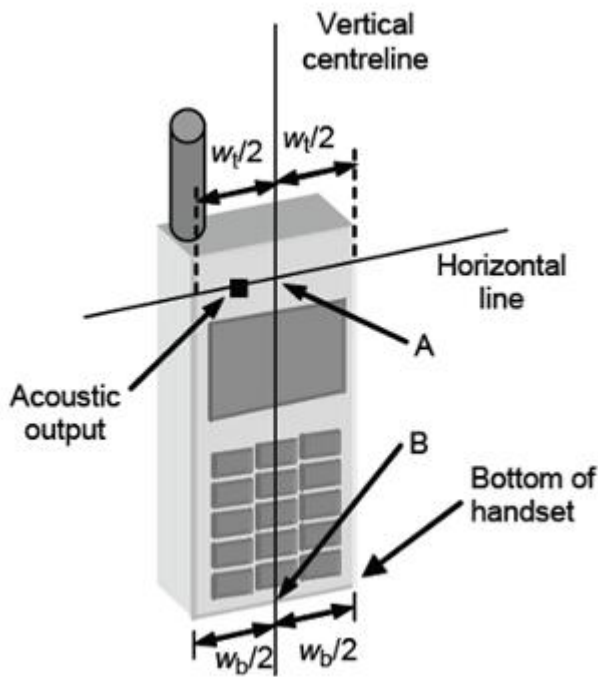


Fig 6.2.1 Handset vertical and horizontal reference lines—“fixed case”

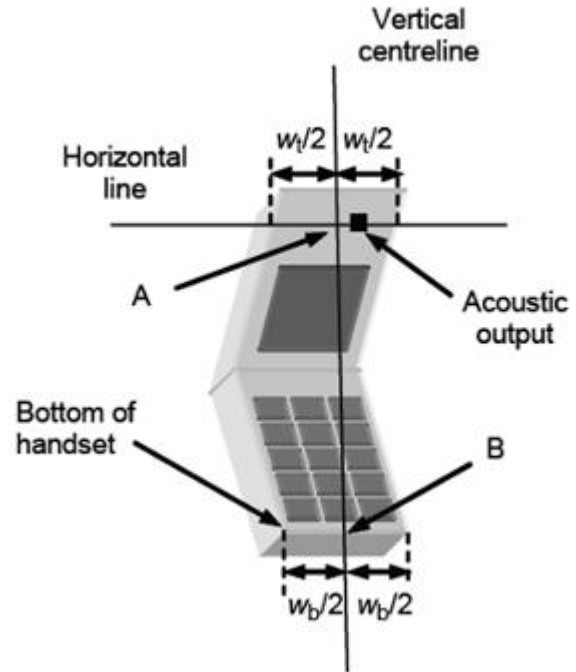


Fig 6.2.2 Handset vertical and horizontal reference lines—“clam-shell case”

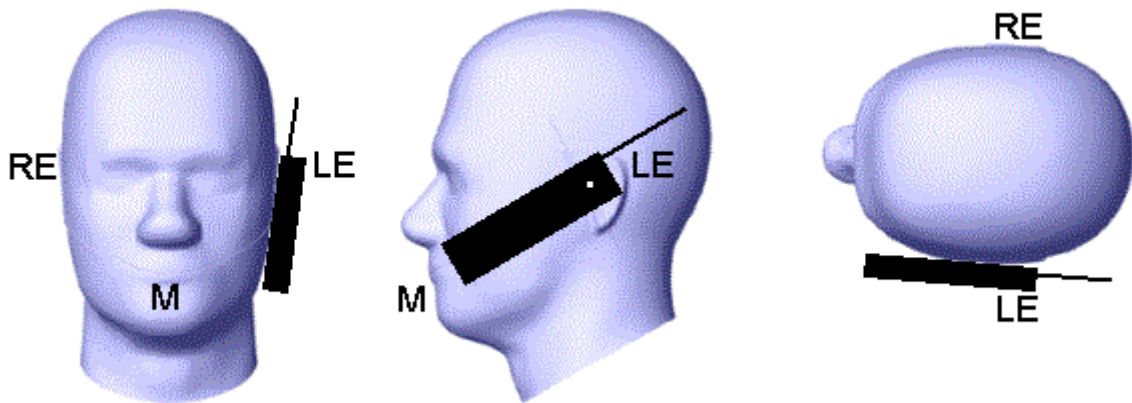


Fig 6.2.3 cheek or touch position. The reference points for the right ear (RE), left ear (LE), and mouth (M), which establish the Reference Plane for handset positioning, are indicated.

6.3. Definition of the tilt position

1. While maintaining the orientation of the handset, retract the handset parallel to the reference plane far enough away from the phantom to enable a rotation of the device by 15 degree.
2. Rotate the Handset around the horizontal line by 15 degree (see Figure 6.3.1).
3. While maintaining the orientation of the handset, move the handset towards the phantom on a line passing through RE and LE until any part of the handset touches the ear. The tilt position is obtained when the contact is on the pinna. If the contact is at any location other than the pinna, e.g., the antenna with the back of the phantom head, the angle of the handset shall be reduced. In this case, the tilt position is obtained if any part of the handset is in contact with the pinna as well as a second part of the handset is in contact with the phantom, e.g., the antenna with the back of the head.

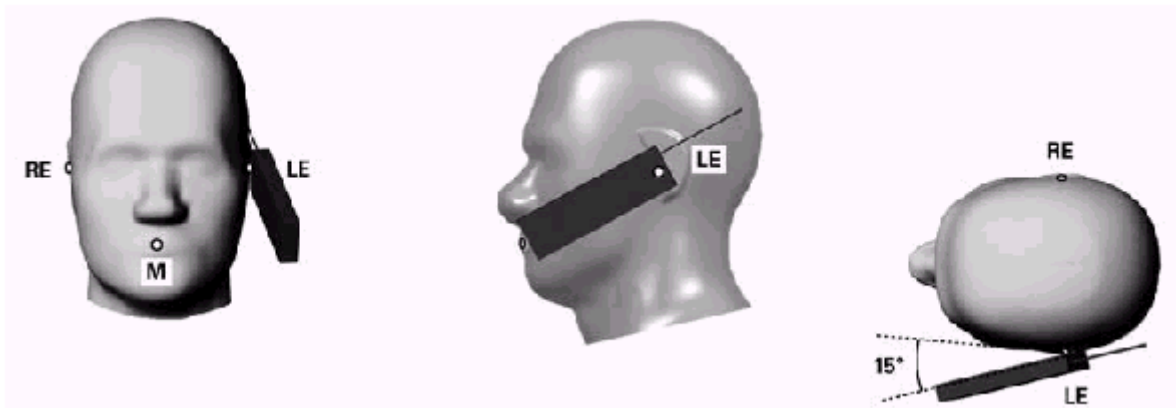


Figure 6.3.1 – Tilt position of the wireless device on the left side of SAM

6.4. Body Worn Accessory

1. Body-worn operating configurations are tested with the belt-clips and holsters attached to the device and positioned against a flat phantom in a normal use configuration (see Figure 6.4.1). Per KDB 648474 D04, body-worn accessory exposure is typically related to voice mode operations when handsets are carried in body-worn accessories. The body-worn accessory procedures in FCC KDB 447498 D01 should be used to test for body-worn accessory SAR compliance, without a headset connected to it. This enables the test results for such configuration to be compatible with that required for hotspot mode when the body-worn accessory test separation distance is greater than or equal to that required for hotspot mode, when applicable. When the reported SAR for body-worn accessory, measured without a headset connected to the handset is $< 1.2 \text{ W/kg}$, the highest reported SAR configuration for that wireless mode and frequency band should be repeated for that body-worn accessory with a handset attached to the handset.
2. Accessories for body-worn operation configurations are divided into two categories: those that do not contain metallic components and those that do contain metallic components and those that do contain metallic components. When multiple accessories that do not contain metallic components are supplied with the device, the device is tested with only the accessory that dictates the closest

spacing to the body. Then multiple accessories that contain metallic components are test with the device with each accessory. If multiple accessories share an identical metallic component (i.e. the same metallic belt-clip used with different holsters with no other metallic components) only the accessory that dictates the closest spacing to the body is tested.

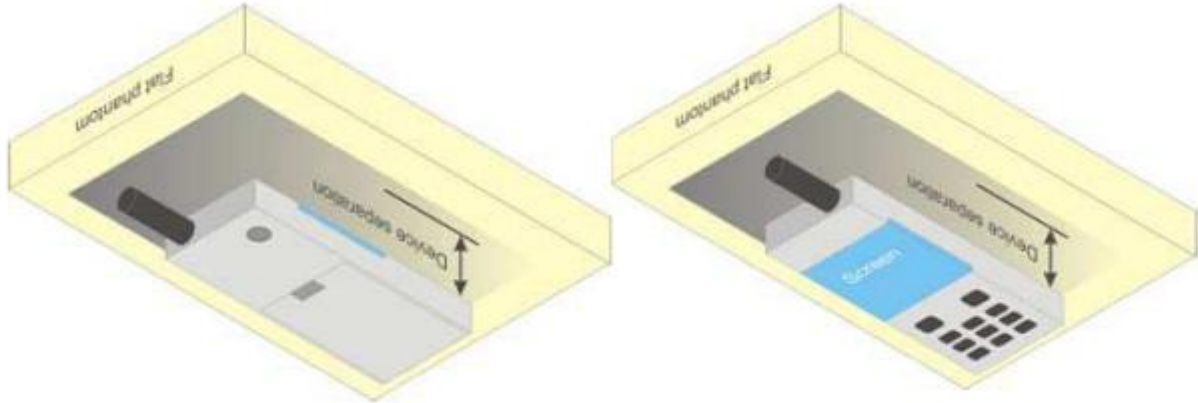


Figure 6.4.1 – Test positions for body-worn devices

6.5. Wireless Router Devices

Some battery-operated handsets have the capability to transmit and receive user through simultaneous transmission of WLAN simultaneously with a separate licensed transmitter. The FCC has provided guidance in FCC KDB Publication 941225 D06 where SAR test considerations for handsets ($L \times W \geq 9 \text{ cm} \times 5 \text{ cm}$) are based on a composite test separation distance of 10mm from the front, back and edges of the device containing transmitting antennas within 2.5cm of their edges, determined from general mixed use conditions for this type of devices. Since the hotspot SAR results may overlap with the body-worn accessory SAR requirements, the more conservative configurations can be considered, thus excluding some body-worn accessory SAR tests.

When the user enables the personal wireless router functions for the handset, actual operations include simultaneous transmission of both the WLAN transmitter and another licensed transmitter. Both transmitters often do not transmit at the same transmitting frequency and thus cannot be evaluated for SAR under actual use conditions due to the limitations of the SAR assessment probes. Therefore, SAR must be evaluated for each frequency transmission and mode separately and spatially summed with the WLAN transmitter according to FCC KDB Publication 447498 D01 publication procedures. The “Portable Hotspot” feature on the handset was NOT activated during SAR assessments, to ensure the SAR measurements were evaluated for a single transmission frequency RF signal at a time.

7. RF Output Power

7.1. Maximum Tune-up Limit

Band	Mode	The Tune-up Maximum Power (Customer Declared)(dBm)	Range	Measured Maximum Output Power(dBm)
GSM 850	GSM Voice	30.5±1	29.5~31.5	31.19
	GPRS	30.5±1	29.5~31.5	31.17
	EDGE	25.5±1	24.5~26.5	26.48
GSM 1900	GSM Voice	29±1	28~30	29.77
	GPRS	29±1	28~30	29.76
	EDGE	25±1	24~26	25.52
WCDMA Band V	RMC 12.2Kbps	22±1	21~23	22.99
	HSDPA	21±1	20~22	21.95
	HSUPA	21±1	20~22	21.96
	HSPA+	21±1	20~22	21.76
WCDMA Band II	RMC 12.2Kbps	22±1	21~23	22.95
	HSDPA	21±1	20~22	21.96
	HSUPA	21±1	20~22	21.95
	HSPA+	21±1	20~22	21.95
LTE Band V	QPSK	21.5±1	20.5~22.5	22.42
	16QAM	20.5±1	19.5~21.5	21.48
LTE Band IV	QPSK	22±1	21~23	22.99
	16QAM	21±1	20~22	22.00
LTE Band II	QPSK	22.5±1	21.5~23.5	23.49
	16QAM	21.5±1	20.5~22.5	22.48
LTE Band VII	QPSK	22.5±1	21.5~23.5	22.38
	16QAM	21.5±1	20.5~22.5	22.50
WLAN 2.4G	802.11b	12.5±1	11.5~13.5	13.1
	802.11g	10.5±1	9.5~11.5	11.3
	802.11n HT20	10.5±1	9.5~11.5	11.2
	802.11n HT40	10.5±1	9.5~11.5	11.1
Bluetooth	BR+EDR	5±1	4~6	5.784
	BLE	5±1	4~6	5.914

7.2. GSM Conducted Power

Band GSM850		Burst-Averaged output Power (dBm)			Frame-Averaged output Power (dBm)			
Tx Channel	Tune-up	128	189	251	Tune-up	128	189	251
Frequency (MHz)	(dBm)	824.2	836.4	848.8	(dBm)	824.2	836.4	848.8
GSM (GMSK)	31.50	31.02	31.10	31.19	22.47	21.99	22.07	22.16
GPRS(GMSK, 1 TS)	31.50	31.03	31.10	31.17	22.47	22.00	22.07	22.14
GPRS(GMSK, 2 TS)	30.50	30.42	30.48	30.49	24.48	24.40	24.46	24.47
GPRS(GMSK, 3 TS)	30.50	29.75	29.80	29.84	26.24	25.49	25.54	25.58
GPRS(GMSK, 4 TS)	29.50	29.10	29.16	29.24	26.49	26.09	26.15	26.23
EDGE(GMSK, 1 TS)	26.50	26.44	26.48	21.43	17.47	17.41	17.45	12.40
EDGE(GMSK, 2 TS)	25.50	25.48	25.43	25.46	19.48	19.46	19.41	19.44
EDGE(GMSK, 3 TS)	23.50	23.46	23.42	23.41	19.24	19.20	19.16	19.15
EDGE(GMSK, 4 TS)	22.50	22.09	22.14	22.48	19.49	19.08	19.13	19.47
Band GSM1900		Burst-Averaged output Power (dBm)			Frame-Averaged output Power (dBm)			
Tx Channel	Tune-up	512	661	810	Tune-up	512	661	810
Frequency (MHz)	(dBm)	1850.2	1880.0	1909.8	(dBm)	1850.2	1880.0	1909.8
GSM (GMSK)	30.00	29.77	29.73	29.70	20.97	20.74	20.70	20.67
GPRS(GMSK, 1 TS)	30.00	29.76	29.75	29.72	20.97	20.73	20.72	20.69
GPRS(GMSK, 2 TS)	29.00	28.34	28.40	28.41	22.98	22.32	22.38	22.39
GPRS(GMSK, 3 TS)	27.00	26.70	26.71	26.66	22.74	22.44	22.45	22.40
GPRS(GMSK, 4 TS)	26.00	25.50	25.80	25.38	22.99	22.49	22.79	22.37
EDGE(GMSK, 1 TS)	26.00	25.20	25.52	25.45	16.97	16.17	16.49	16.42
EDGE(GMSK, 2 TS)	25.00	24.31	24.65	24.62	18.98	18.29	18.63	18.60
EDGE(GMSK, 3 TS)	25.00	24.29	24.64	24.65	20.74	20.03	20.38	20.39
EDGE(GMSK, 4 TS)	24.00	23.56	23.62	23.28	20.99	20.55	20.61	20.27

Note: The frame-averaged power is linearly scaled the maximum burst averaged power over 8 time slots.

The calculated method are shown as below:

Frame-averaged power = Maximum burst averaged power (1 TS) - 9.03 dB

Frame-averaged power = Maximum burst averaged power (2 TS) - 6.02 dB

Frame-averaged power = Maximum burst averaged power (3 TS) - 4.26 dB

Frame-averaged power = Maximum burst averaged power (4 TS) - 3.01 dB

7.3. WCDMA Conducted Power

Band	WCDMA Band V			
Tx Channel	Tune-up	4132	4182	4233
Frequency (MHz)		826.4	836.4	846.6
RMC 12.2Kbps	23.00	22.89	22.94	22.99
HSDPA Subtest-1	22.00	21.89	21.94	21.95

HSDPA Subtest-2	22.00	21.53	21.39	21.47
HSDPA Subtest-3	22.00	21.52	21.38	21.41
HSDPA Subtest-4	22.00	21.55	21.39	21.43
HSUPA Subtest-1	22.00	21.54	21.41	21.49
HSUPA Subtest-2	22.00	21.54	21.44	21.40
HSUPA Subtest-3	22.00	21.57	21.49	21.42
HSUPA Subtest-4	22.00	21.50	21.42	21.46
HSUPA Subtest-5	22.00	21.87	21.96	21.65
HSPA+	22.00	21.76	21.58	21.55
Band	WCDMA Band II			
Tx Channel	Tune-up	9262	9400	9538
Frequency (MHz)		1852.4	1880	1907.6
RMC 12.2Kbps	23.00	22.76	22.85	22.95
HSDPA Subtest-1	22.00	21.25	21.96	21.89
HSDPA Subtest-2	22.00	21.35	21.59	21.96
HSDPA Subtest-3	22.00	21.11	21.55	21.77
HSDPA Subtest-4	22.00	21.25	21.52	21.85
HSUPA Subtest-1	22.00	21.25	21.67	21.65
HSUPA Subtest-2	22.00	21.35	21.66	21.62
HSUPA Subtest-3	22.00	21.28	21.69	21.68
HSUPA Subtest-4	22.00	21.35	21.62	21.65
HSUPA Subtest-5	22.00	21.25	21.89	21.95
HSPA+	22.00	21.26	21.95	21.89

7.4. LTE Conducted Power

Band	Band Width	Modulation	RB Configuration		Tune-up	Channel/Frequency(MHz)		
			RB Size	RB Offset		20407/824.7	20525/836.5	20643/848.3
LTE Band V	1.4MHz	QPSK	1	0	22.50	21.33	22.25	22.23
			1	2	22.50	22.42	22.41	22.39
			1	5	22.50	22.22	22.27	22.21
			3	0	22.50	22.28	22.29	22.28
			3	1	22.50	22.35	22.31	22.25
			3	2	22.50	22.30	22.34	22.24
		16QAM	6	0	21.50	21.32	21.34	21.26
			1	0	21.50	21.21	21.31	21.16
			1	2	21.50	21.39	21.48	21.35
			1	5	21.50	21.20	21.32	21.17

Band	Band Width	Modulation	RB Configuration		Tune-up	Channel/Frequency(MHz)		
			RB Size	RB Offset		20415/825.5	20525/836.5	20635/847.5
			3	0	21.50	21.32	21.26	21.42
			3	1	21.50	21.35	21.28	21.41
			3	2	21.50	21.32	21.25	21.39
			6	0	20.50	20.30	20.39	20.33
LTE Band V	3MHz	QPSK	1	0	22.50	22.26	22.31	22.22
			1	7	22.50	22.24	22.30	22.27
			1	14	22.50	22.21	22.25	22.25
			8	0	21.50	21.22	21.24	21.24
			8	4	21.50	21.21	21.21	21.31
			8	7	21.50	21.17	21.24	21.18
			15	0	21.50	21.23	21.22	21.22
		16QAM	1	0	21.50	21.47	21.27	21.33
			1	7	21.50	21.44	21.24	21.34
			1	14	21.50	21.44	21.19	21.32
			8	0	20.50	20.42	20.33	20.27
			8	4	20.50	20.40	20.35	20.28
			8	7	20.50	20.40	20.34	20.22
			15	0	20.50	20.32	20.33	20.21
Band	Band Width	Modulation	RB Configuration		Tune-up	Channel/Frequency(MHz)		
			RB Size	RB Offset		20425/826.5	20525/836.5	20625/846.5
LTE Band V	5MHz	QPSK	1	0	22.50	22.22	22.21	22.17
			1	12	22.50	22.30	22.28	22.26
			1	24	22.50	22.20	22.13	22.16
			12	0	21.50	21.25	21.20	21.20
			12	6	21.50	21.21	21.20	21.18
			12	11	21.50	21.12	21.24	21.12
			25	0	21.50	21.20	21.24	21.20
		16QAM	1	0	21.50	21.04	21.25	21.37
			1	12	21.50	21.14	21.31	21.43
			1	24	21.50	21.06	21.18	21.41
			12	0	20.50	20.31	20.20	20.31
			12	6	20.50	20.28	20.25	20.30
			12	11	20.50	20.20	20.31	20.23
			25	0	20.50	20.29	20.30	20.23

Band	Band Width	Modulation	RB Configuration		Tune-up	Channel/Frequency(MHz)		
			RB Size	RB Offset		20450/829	20525/836.5	20600/844
LTE Band V	10MHz	QPSK	1	0	22.50	22.22	22.30	22.23
			1	24	22.50	22.38	22.42	22.35
			1	49	22.50	22.24	22.21	22.23
			25	0	21.50	21.43	21.23	21.15
			25	12	21.50	21.25	21.35	21.22
			25	24	21.50	21.24	21.37	21.20
			50	0	21.50	21.33	21.36	21.18
		16QAM	1	0	21.50	21.46	21.24	21.34
			1	24	21.50	21.43	21.35	21.43
			1	49	21.50	21.45	21.20	21.35
			25	0	20.50	20.48	20.38	20.24
			25	12	20.50	20.38	20.36	20.25
			25	24	20.50	20.34	20.50	20.22
			50	0	20.50	20.37	20.37	20.22

Band	Band Width	Modulation	RB Configuration		Tune-up	Channel/Frequency(MHz)		
			RB Size	RB Offset		19957/1710.7	20175/1732.5	20393/1754.3
LTE Band IV	1.4MHz	QPSK	1	0	23.00	22.80	22.58	22.81
			1	2	23.00	22.57	22.75	22.98
			1	5	23.00	22.42	22.58	22.81
			3	0	23.00	22.55	22.65	22.87
			3	1	23.00	22.49	22.65	22.89
			3	2	23.00	22.76	22.84	22.91
			6	0	22.00	21.49	21.62	21.88
		16QAM	1	0	22.00	21.55	21.49	21.80
			1	2	22.00	21.76	21.64	21.97
			1	5	22.00	21.51	21.51	21.82
			3	0	22.00	21.53	21.83	21.97
			3	1	22.00	21.56	21.85	21.95
			3	2	22.00	21.58	21.80	21.95
			6	0	21.00	20.55	20.62	20.76

Band	Band Width	Modulation	RB Configuration		Tune-up	Channel/Frequency(MHz)		
			RB	RB		19965/1711.5	20175/1732.5	20385/1753.5

Band	Band Width	Modulation	RB Configuration		Tune-up	Channel/Frequency(MHz)		
			RB Size	RB Offset		19975/1712.5	20175/1732.5	20375/1752.5
LTE Band IV	3MHz	QPSK	1	0	23.00	22.48	22.89	22.89
			1	7	23.00	22.41	22.73	22.91
			1	14	23.00	22.41	22.65	22.88
			8	0	22.00	21.47	21.63	21.90
			8	4	22.00	21.45	21.65	21.89
			8	7	22.00	21.41	21.62	21.88
			15	0	22.00	21.46	21.63	21.89
		16QAM	1	0	22.00	22.00	21.74	21.89
			1	7	22.00	21.92	21.72	21.89
			1	14	22.00	21.93	21.71	21.85
			8	0	21.00	20.72	20.70	21.07
			8	4	21.00	20.69	20.65	21.05
			8	7	21.00	20.69	20.63	21.05
			15	0	21.00	20.57	20.63	20.96
LTE Band IV	5MHz	QPSK	1	0	23.00	22.50	22.55	22.79
			1	12	23.00	22.55	22.68	22.93
			1	24	23.00	22.48	22.63	22.84
			12	0	22.00	21.50	21.57	21.87
			12	6	22.00	21.46	21.35	21.85
			12	11	22.00	21.52	21.63	21.88
			25	0	22.00	21.53	21.63	21.90
		16QAM	1	0	22.00	21.37	21.53	21.89
			1	12	22.00	21.44	21.66	21.95
			1	24	22.00	21.31	21.61	21.88
			12	0	21.00	20.64	20.60	20.87
			12	6	21.00	20.62	20.59	20.85
			12	11	21.00	20.61	20.68	20.89
			25	0	21.00	20.72	20.69	20.88
LTE Band IV	10MHz	QPSK	1	0	23.00	22.54	22.70	22.78
			1	24	23.00	22.78	22.85	22.88
			1	49	23.00	22.63	22.70	22.92

		16QAM	25	0	22.00	21.65	21.63	21.92
			25	12	22.00	21.65	21.65	21.89
			25	24	22.00	21.64	21.71	21.93
			50	0	22.00	21.64	21.71	21.92
			1	0	22.00	21.88	21.57	21.87
			1	24	22.00	21.98	21.80	21.86
			1	49	22.00	21.95	21.62	21.81
			25	0	21.00	20.79	20.77	20.94
			25	12	21.00	20.89	20.85	20.99
			25	24	21.00	20.80	20.85	20.85
50	0	21.00	20.78	20.77	20.94			
Band	Band Width	Modulation	RB Configuration		Tune-up	Channel/Frequency(MHz)		
			RB Size	RB Offset		20025/1717.5	20175/1732.5	20325/1747.5
LTE Band IV	15MHz	QPSK	1	0	23.00	22.42	22.58	22.60
			1	37	23.00	22.61	22.71	22.89
			1	74	23.00	22.55	22.61	22.84
			36	0	22.00	21.60	21.66	21.83
			36	18	22.00	21.68	21.65	21.85
			36	37	22.00	21.68	21.77	21.96
			75	0	22.00	21.67	21.73	21.93
		16QAM	1	0	22.00	21.89	21.85	21.72
			1	37	22.00	21.95	21.98	21.97
			1	74	22.00	21.99	21.93	21.94
			36	0	21.00	20.68	20.70	20.92
			36	18	21.00	20.69	20.85	20.95
			36	37	21.00	20.76	20.81	20.94
			75	0	21.00	20.71	20.73	20.87
Band	Band Width	Modulation	RB Configuration		Tune-up	Channel/Frequency(MHz)		
			RB Size	RB Offset		20050/1720	20175/1732.5	20300/1745
LTE Band IV	20MHz	QPSK	1	0	23.00	22.31	22.33	22.42
			1	49	23.00	22.82	22.78	22.99
			1	99	23.00	22.44	22.48	22.76
			50	0	22.00	21.59	21.54	21.75
			50	24	22.00	21.64	21.58	21.65
			50	49	22.00	21.65	21.63	21.83
			100	0	22.00	21.60	21.55	21.82

16QAM	1	0	22.00	21.62	21.81	21.59
	1	49	22.00	21.94	21.86	21.95
	1	99	22.00	21.62	22.00	21.87
	50	0	21.00	20.66	20.58	20.84
	50	24	21.00	20.68	20.59	20.82
	50	49	21.00	20.68	20.69	20.82
	100	0	21.00	20.69	20.64	20.79

Band	Band Width	Modulation	RB Configuration		Tune-up	Channel/Frequency(MHz)		
			RB Size	RB Offset		18607/1850.7	18900/1880	19193/1909.3
LTE Band II	1.4MHz	QPSK	1	0	23.50	22.85	22.72	23.07
			1	2	23.50	23.01	22.89	23.23
			1	5	23.50	22.82	22.71	23.09
			3	0	23.50	23.20	23.22	23.13
			3	1	23.50	23.28	23.31	23.18
			3	2	23.50	23.18	23.15	23.06
			6	0	22.50	21.88	21.78	22.13
		16QAM	1	0	22.50	21.93	21.70	21.95
			1	2	22.50	22.03	21.81	22.14
			1	5	22.50	21.96	21.71	22.02
			3	0	22.50	21.87	22.01	22.14
			3	1	22.50	21.95	22.05	22.15
			3	2	22.50	21.92	22.02	22.14
			6	0	21.50	21.20	21.18	21.08

Band	Band Width	Modulation	RB Configuration		Tune-up	Channel/Frequency(MHz)		
			RB Size	RB Offset		18615/1851.5	18900/1880	19185/1908.5
LTE Band II	3MHz	QPSK	1	0	23.50	23.01	22.87	23.11
			1	7	23.50	22.91	22.85	23.16
			1	14	23.50	22.92	22.90	23.20
			8	0	22.50	21.95	21.89	22.12
			8	4	22.50	21.96	21.89	22.15
			8	7	22.50	21.92	21.82	22.13
			15	0	22.50	21.92	21.81	22.10
		16QAM	1	0	22.50	22.46	21.88	22.17
			1	7	22.50	22.38	21.79	22.21
			1	14	22.50	22.35	21.77	22.26

Band	Band Width	Modulation	RB Configuration		Tune-up	Channel/Frequency(MHz)		
			RB Size	RB Offset		18625/1852.5	18900/1880	19175/1907.5
			8	0	21.50	21.08	20.87	21.02
			8	4	21.50	21.08	20.95	21.10
			8	7	21.50	21.07	20.87	21.06
			15	0	21.50	21.25	20.86	20.99
LTE Band II	5MHz	QPSK	1	0	23.50	22.89	22.81	22.93
			1	12	23.50	22.95	22.86	23.18
			1	24	23.50	22.89	22.78	23.14
			12	0	22.50	21.95	21.80	22.02
			12	6	22.50	21.95	21.86	22.13
			12	11	22.50	21.87	21.80	22.13
			25	0	22.50	21.92	21.85	22.12
		16QAM	1	0	22.50	21.70	21.81	22.20
			1	12	22.50	21.77	21.87	22.39
			1	24	22.50	21.69	21.78	22.41
			12	0	21.50	20.91	20.81	21.05
			12	6	21.50	21.46	21.45	21.15
			12	11	21.50	20.88	20.78	21.16
			25	0	21.50	20.96	20.81	21.11
Band	Band Width	Modulation	RB Configuration		Tune-up	Channel/Frequency(MHz)		
			RB Size	RB Offset		18650/1855	18900/1880	19150/1905
LTE Band II	10MHz	QPSK	1	0	23.50	23.01	22.91	22.94
			1	24	23.50	23.10	23.07	23.12
			1	49	23.50	22.96	22.87	23.14
			25	0	22.50	22.05	21.93	22.08
			25	12	22.50	22.05	21.86	22.11
			25	24	22.50	22.04	21.92	22.13
			50	0	22.50	22.08	21.93	22.08
		16QAM	1	0	22.50	22.48	21.89	22.00
			1	24	22.50	22.42	22.04	22.26
			1	49	22.50	22.45	21.83	22.26
			25	0	21.50	21.25	20.97	21.07
			25	12	21.50	21.05	20.99	21.05
			25	24	21.50	21.04	20.99	21.07
			50	0	21.50	21.05	20.93	21.09

Band	Band Width	Modulation	RB Configuration		Tune-up	Channel/Frequency(MHz)		
			RB Size	RB Offset		18675/1857.5	18900/1880	19125/1902.5
LTE Band II	15MHz	QPSK	1	0	23.50	22.97	22.89	22.84
			1	37	23.50	23.03	22.94	22.96
			1	74	23.50	22.90	22.77	23.05
			36	0	22.50	22.09	21.96	22.07
			36	18	22.50	22.08	21.95	22.05
			36	37	22.50	22.06	21.99	22.10
			75	0	22.50	22.12	22.01	22.13
		16QAM	1	0	22.50	22.45	22.22	21.93
			1	37	22.50	22.42	22.30	22.08
			1	74	22.50	22.40	22.09	22.19
			36	0	21.50	21.07	20.94	21.00
			36	18	21.50	21.05	20.89	21.08
			36	37	21.50	21.01	20.95	21.07
			75	0	21.50	21.03	20.92	21.06
Band	Band Width	Modulation	RB Configuration		Tune-up	Channel/Frequency(MHz)		
			RB Size	RB Offset		18700/1860	18900/1880	19100/1900
LTE Band II	20MHz	QPSK	1	0	23.50	22.37	22.75	22.65
			1	49	23.50	23.49	23.41	23.28
			1	99	23.50	22.66	22.65	22.97
			50	0	22.50	22.01	21.93	21.94
			50	24	22.50	22.10	22.05	21.99
			50	49	22.50	21.97	21.91	21.93
			100	0	22.50	22.00	21.91	21.94
		16QAM	1	0	22.50	22.27	21.90	21.89
			1	49	22.50	22.45	22.25	22.29
			1	99	22.50	22.23	21.79	22.21
			50	0	21.50	21.19	21.16	21.09
			50	24	21.50	21.15	21.16	21.09
			50	49	21.50	21.18	21.07	21.11
			100	0	21.50	21.17	21.09	21.16

Band	Band Width	Modulation	RB Configuration		Tune-up	Channel/Frequency(MHz)		
			RB Size	RB Offset		20775/2502.5	21100/2535	21425/2567.5
LTE Band VII	5MHz	QPSK	1	0	23.50	22.78	23.17	23.11
			1	12	23.50	22.91	23.25	22.89
			1	24	23.50	22.85	23.14	22.69
			12	0	22.50	21.80	22.22	22.20
			12	6	22.50	21.86	22.15	22.08
			12	11	22.50	21.88	22.13	22.08
			25	0	22.50	21.90	22.20	22.13
		16QAM	1	0	22.50	21.82	22.38	21.94
			1	12	22.50	21.95	22.50	21.99
			1	24	22.50	21.91	22.36	21.86
			12	0	21.50	20.85	21.31	21.27
			12	6	21.50	20.89	21.25	21.05
			12	11	21.50	20.92	21.23	21.07
			25	0	21.50	20.93	21.24	21.20
Band	Band Width	Modulation	RB Configuration		Tune-up	Channel/Frequency(MHz)		
			RB Size	RB Offset		20800/2505	21100/2535	21400/2565
LTE Band VII	10MHz	QPSK	1	0	23.50	22.82	23.21	23.17
			1	24	23.50	23.09	23.37	23.32
			1	49	23.50	23.00	23.26	22.82
			25	0	22.50	21.84	22.20	22.38
			25	12	22.50	21.95	22.21	22.21
			25	24	22.50	22.08	22.21	22.09
			50	0	22.50	21.93	22.20	22.22
		16QAM	1	0	22.50	22.35	22.14	22.25
			1	24	22.50	22.44	22.29	22.43
			1	49	22.50	22.41	22.20	22.20
			25	0	21.50	20.91	21.35	21.36
			25	12	21.50	20.90	21.25	21.32
			25	24	21.50	21.15	21.32	21.09
			50	0	21.50	20.99	21.26	21.22
Band	Band Width	Modulation	RB Configuration		Tune-up	Channel/Frequency(MHz)		
			RB	RB		20825/2507.5	21100/2535	21375/2562.5

Band	Band Width	Modulation	RB Configuration		Tune-up	Channel/Frequency(MHz)		
			RB Size	RB Offset		20850/2510	21100/2535	21350/2560
LTE Band VII	15MHz	QPSK	1	0	23.50	22.76	23.10	23.23
			1	37	23.50	22.93	23.24	23.21
			1	74	23.50	22.91	23.14	22.94
			36	0	22.50	21.88	22.25	22.34
			36	18	22.50	21.28	22.23	22.31
			36	37	22.50	22.11	22.30	22.13
			75	0	22.50	22.02	22.30	22.28
		16QAM	1	0	22.50	22.25	22.40	22.21
			1	37	22.50	22.47	22.49	22.27
			1	74	22.50	22.43	22.41	22.10
			36	0	21.50	20.89	21.29	21.33
			36	18	21.50	21.08	21.25	21.22
			36	37	21.50	21.16	21.31	21.14
			75	0	21.50	21.05	21.27	21.22
LTE Band VII	20MHz	QPSK	1	0	23.50	22.67	22.89	23.04
			1	49	23.50	23.13	23.33	23.37
			1	99	23.50	22.88	23.00	22.83
			50	0	22.50	22.31	22.30	22.28
			50	24	22.50	21.86	22.21	22.09
			50	49	22.50	22.18	22.23	21.89
			100	0	22.50	21.99	22.24	21.95
		16QAM	1	0	22.50	21.93	22.40	22.06
			1	49	22.50	22.41	22.48	22.40
			1	99	22.50	22.11	22.44	21.99
			50	0	21.50	20.81	21.33	21.08
			50	24	21.50	21.16	21.25	21.05
			50	49	21.50	21.19	21.22	20.92
			100	0	21.50	21.04	21.28	21.02

7.5. WLAN & Bluetooth Output Power

7.5.1. Output Power Results Of WLAN

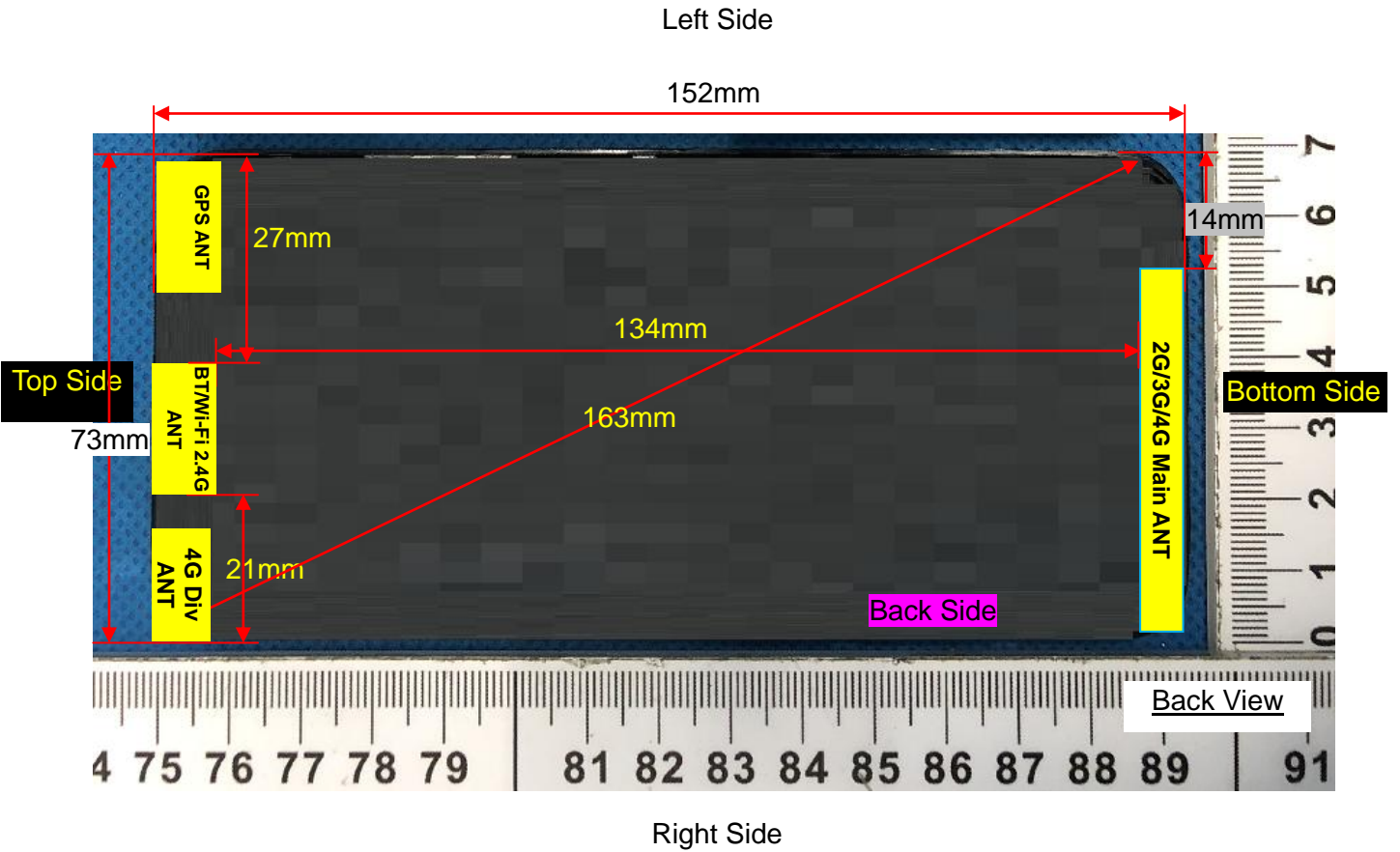
Mode	Channel	Frequency (MHz)	Tune-up	Output Power (dBm)
802.11b	1	2412	13.5	13.1
	6	2437	13.5	12.6
	11	2462	13.5	12.8
802.11g	1	2412	11.5	11.3
	6	2437	11.5	11.1
	11	2462	11.5	10.9
802.11n HT20	1	2412	11.5	11.1
	6	2437	11.5	11.2
	11	2462	11.5	10.8
802.11n HT40	3	2422	11.5	11.1
	6	2437	11.5	10.9
	9	2452	11.5	10.8

7.5.2. Output Power Results Of Bluetooth

BR+EDR	Output Power (dBm)				
	Channel	Tune-up	Data Rates		
			0CH	39CH	78CH
	1M	6.000	5.784	5.524	5.125
	2M	6.000	4.930	4.799	4.170
	3M	6.000	5.321	5.146	4.562

BLE	Channel	Tune-up	Output Power (dBm)
	0CH	6.000	5.914
	19CH	6.000	5.802
	39CH	6.000	5.266

8. Antenna Location



Distance of the Antenna to the EUT surface/edge						
Antennas	Front Side	Back Side	Left Side	Right Side	Top Side	Bottom Side
WWAN Main	≤ 25mm	≤ 25mm	≤ 25mm	≤ 25mm	>25mm	≤ 25mm
WLAN & Bluetooth	≤ 25mm	≤ 25mm	>25mm	≤ 25mm	≤ 25mm	>25mm
Positions for SAR tests						
Antennas	Front Side	Back Side	Left Side	Right Side	Top Side	Bottom Side
WWAN Main	Yes	Yes	Yes	Yes	NO	Yes
WLAN & Bluetooth	Yes	Yes	NO	Yes	Yes	NO

9. Stand-alone SAR test exclusion

Refer to FCC KDB 447498D01, the 1-g SAR and 10-g SAR test exclusion thresholds for 100 MHz to 6 GHz at test separation distances ≤ 50 mm are determined by:

$[(\text{max. power of channel, including tune-up tolerance, mW}) / (\text{min. test separation distance, mm})] \cdot [\sqrt{f_{\text{(GHz)}}}] \leq 3.0$ for 1-g SAR and ≤ 7.5 for 10-g extremity SAR, where:

- $f_{\text{(GHz)}}$ is the RF channel transmit frequency in GHz
- Power and distance are rounded to the nearest mW and mm before calculation
- The result is rounded to one decimal place for comparison

When the minimum test separation distance is < 5 mm, a distance of 5 mm is applied to determine SAR test exclusion.

Mode	P_{max} (dBm)	P_{max} (mW)	Distance (mm)	f (GHz)	Calculation Result	SAR Exclusion threshold	SAR test exclusion
Bluetooth	6.00	3.98	5	2.480	1.25	3.0	Yes

NOTE: Standalone SAR test exclusion for Bluetooth

When standalone SAR test exclusion applies to an antenna that transmits simultaneously with other antennas, the standalone SAR must be estimated according to following to determine simultaneous transmission SAR test exclusion:

$[(\text{max. power of channel, including tune-up tolerance, mW}) / (\text{min. test separation distance, mm})] \cdot [\sqrt{f_{\text{(GHz)}}/x}] \text{ W/kg}$ for test separation distances ≤ 50 mm, where $x = 7.5$ for 1-g SAR and $x = 18.75$ for 10-g SAR.

When the minimum test separation distance is < 5 mm, a distance of 5 mm is applied to determine SAR test exclusion.

Mode	Position	P_{max} (dBm)	P_{max} (mW)	Distance (mm)	f (GHz)	x	Estimated SAR (W/Kg)
Bluetooth	Head	6.00	3.98	5	2.480	7.5	0.167
Bluetooth	Body	6.00	3.98	10	2.480	7.5	0.084
Bluetooth	Hotspot	6.00	3.98	10	2.480	7.5	0.084

NOTE: Estimated SAR calculation for Bluetooth

10. SAR Results

10.1. SAR measurement results

10.1.1. SAR measurement Result of GSM850

Test Position of Head	Test channel /Freq.	Test Mode	SAR Value (W/kg)		Power Drift ($\pm 5\%$)	Conducted power (dBm)	Tune-up power (dBm)	Scaled SAR 1g (W/Kg)
			1g	10g				
Left Cheek	189/836.4	GPRS(GMSK 4TS)	0.500	0.373	3.77	29.16	29.50	0.541
Left Tilt 15 Degree	189/836.4	GPRS(GMSK 4TS)	0.365	0.129	0.25	29.16	29.50	0.395
Right Cheek	189/836.4	GPRS(GMSK 4TS)	0.487	0.353	1.47	29.16	29.50	0.527
Right Tilt 15 Degree	189/836.4	GPRS(GMSK 4TS)	0.341	0.106	3.20	29.16	29.50	0.369

NOTE: Head SAR test results of GSM850.

Test Position of Body-Worn with 10mm	Test channel /Freq.	Test Mode	SAR Value (W/kg)		Power Drift ($\pm 5\%$)	Conducted power (dBm)	Tune-up power (dBm)	Scaled SAR 1g (W/Kg)
			1g	10g				
Front Side	189/836.4	GPRS(GMSK 4TS)	0.429	0.324	2.93	29.16	29.50	0.464
Back Side	189/836.4	GPRS(GMSK 4TS)	0.554	0.408	-1.54	29.16	29.50	0.599

NOTE: Body-Worn SAR test results of GSM850

Test Position of Hotspot with 10mm	Test channel /Freq.	Test Mode	SAR Value (W/kg)		Power Drift ($\pm 5\%$)	Conducted power (dBm)	Tune-up power (dBm)	Scaled SAR 1g (W/Kg)
			1g	10g				
Front Side	189/836.4	GPRS(GMSK 4TS)	0.429	0.324	2.93	29.16	29.50	0.464
Back Side	189/836.4	GPRS(GMSK 4TS)	0.554	0.408	-1.54	29.16	29.50	0.599
Left Side	189/836.4	GPRS(GMSK 4TS)	0.410	0.306	0.25	29.16	29.50	0.443
Right Side	189/836.4	GPRS(GMSK 4TS)	0.405	0.292	3.61	29.16	29.50	0.438
Bottom Side	189/836.4	GPRS(GMSK 4TS)	0.394	0.289	-0.47	29.16	29.50	0.426

NOTE: Hotspot SAR test results of GSM850

10.1.2. SAR measurement Result of GSM1900

Test Position of Head	Test channel /Freq.	Test Mode	SAR Value (W/kg)		Power Drift ($\pm 5\%$)	Conducted power (dBm)	Tune-up power (dBm)	Scaled SAR 1g (W/Kg)
			1g	10g				
Left Cheek	661/1880	GPRS(GMSK 4TS)	0.114	0.070	-4.71	25.80	26.00	0.119

Left Tilt 15 Degree	661/1880	GPRS(GMSK 4TS)	0.078	0.052	0.51	25.80	26.00	0.082
Right Cheek	661/1880	GPRS(GMSK 4TS)	0.103	0.061	3.24	25.80	26.00	0.108
Right Tilt 15 Degree	661/1880	GPRS(GMSK 4TS)	0.072	0.045	-0.67	25.80	26.00	0.075

NOTE: Head SAR test results of GSM1900

Test Position of Body-Worn with 10mm	Test channel /Freq.	Test Mode	SAR Value (W/kg)		Power Drift (±5%)	Conducted power (dBm)	Tune-up power (dBm)	Scaled SAR 1g (W/Kg)
			1g	10g				
Front Side	661/1880	GPRS(GMSK 4TS)	0.621	0.333	-2.58	25.80	26.00	0.650
Back Side	661/1880	GPRS(GMSK 4TS)	0.667	0.354	-1.21	25.80	26.00	0.698

NOTE: Body-Worn SAR test results of GSM1900

Test Position of Hotspot with 10mm	Test channel /Freq.	Test Mode	SAR Value (W/kg)		Power Drift (±5%)	Conducted power (dBm)	Tune-up power (dBm)	Scaled SAR 1g (W/Kg)
			1g	10g				
Front Side	661/1880	GPRS(GMSK 4TS)	0.621	0.333	-2.58	25.80	26.00	0.650
Back Side	661/1880	GPRS(GMSK 4TS)	0.667	0.354	-1.21	25.80	26.00	0.698
Left Side	661/1880	GPRS(GMSK 4TS)	0.112	0.082	-1.54	25.80	26.00	0.117
Right Side	661/1880	GPRS(GMSK 4TS)	0.255	0.148	-3.98	25.80	26.00	0.267
Bottom Side	661/1880	GPRS(GMSK 4TS)	0.747	0.378	-3.46	25.80	26.00	0.782

NOTE: Hotspot SAR test results of GSM1900

10.1.3. SAR measurement Result of WCDMA Band V

Test Position of Head	Test channel /Freq.	Test Mode	SAR Value (W/kg)		Power Drift (±5%)	Conducted power (dBm)	Tune-up power (dBm)	Scaled SAR 1g (W/Kg)
			1g	10g				
Left Cheek	4182/836.4	RMC12.2K	0.172	0.134	-1.25	22.94	23.00	0.174
Left Tilt 15 Degree	4182/836.4	RMC12.2K	0.120	0.087	0.54	22.94	23.00	0.122
Right Cheek	4182/836.4	RMC12.2K	0.165	0.127	3.21	22.94	23.00	0.167
Right Tilt 15 Degree	4182/836.4	RMC12.2K	0.113	0.072	-1.48	22.94	23.00	0.115

NOTE: Head SAR test results of WCDMA Band V

Test Position of Body-Worn with 10mm	Test channel /Freq.	Test Mode	SAR Value (W/kg)		Power Drift (±5%)	Conducted power (dBm)	Tune-up power (dBm)	Scaled SAR 1g (W/Kg)
			1g	10g				

Front Side	4182/836.4	RMC12.2K	0.155	0.123	-2.50	22.94	23.00	0.157
Back Side	4182/836.4	RMC12.2K	0.199	0.155	0.06	22.94	23.00	0.202

NOTE: Body-Worn SAR test results of WCDMA Band V

Test Position of Hotspot with 10mm	Test channel /Freq.	Test Mode	SAR Value (W/kg)		Power Drift (±5%)	Conducted power (dBm)	Tune-up power (dBm)	Scaled SAR 1g (W/Kg)
			1g	10g				
Front Side	4182/836.4	RMC12.2K	0.155	0.123	-2.50	22.94	23.00	0.157
Back Side	4182/836.4	RMC12.2K	0.199	0.155	0.06	22.94	23.00	0.202
Left Side	4182/836.4	RMC12.2K	0.083	0.061	0.54	22.94	23.00	0.084
Right Side	4182/836.4	RMC12.2K	0.081	0.056	3.14	22.94	23.00	0.082
Bottom Side	4182/836.4	RMC12.2K	0.097	0.078	-3.69	22.94	23.00	0.098

NOTE: Hotspot SAR test results of WCDMA Band V

10.1.4. SAR measurement Result of WCDMA Band II

Test Position of Head	Test channel /Freq.	Test Mode	SAR Value (W/kg)		Power Drift (±5%)	Conducted power (dBm)	Tune-up power (dBm)	Scaled SAR 1g (W/Kg)
			1g	10g				
Left Cheek	9400/1880	RMC12.2K	0.117	0.073	-0.93	22.85	23.00	0.121
Left Tilt 15 Degree	9400/1880	RMC12.2K	0.063	0.042	2.57	22.85	23.00	0.065
Right Cheek	9400/1880	RMC12.2K	0.093	0.061	-3.74	22.85	23.00	0.096
Right Tilt 15 Degree	9400/1880	RMC12.2K	0.054	0.037	1.54	22.85	23.00	0.056

NOTE: Head SAR test results of WCDMA Band II

Test Position of Body-Worn with 10mm	Test channel /Freq.	Test Mode	SAR Value (W/kg)		Power Drift (±5%)	Conducted power (dBm)	Tune-up power (dBm)	Scaled SAR 1g (W/Kg)
			1g	10g				
Front Side	9400/1880	RMC12.2K	0.501	0.229	2.54	22.85	23.00	0.519
Back Side	9400/1880	RMC12.2K	0.573	0.312	0.90	22.85	23.00	0.593

NOTE: Body-Worn SAR test results of WCDMA Band II

Test Position of Hotspot with 10mm	Test channel /Freq.	Test Mode	SAR Value (W/kg)		Power Drift (±5%)	Conducted power (dBm)	Tune-up power (dBm)	Scaled SAR 1g (W/Kg)
			1g	10g				
Front Side	9400/1880	RMC12.2K	0.501	0.229	2.54	22.85	23.00	0.519
Back Side	9400/1880	RMC12.2K	0.573	0.312	0.90	22.85	23.00	0.593
Left Side	9400/1880	RMC12.2K	0.312	0.102	3.65	22.85	23.00	0.323
Right Side	9400/1880	RMC12.2K	0.325	0.113	1.47	22.85	23.00	0.336

Bottom Side	9400/1880	RMC12.2K	0.709	0.362	-1.33	22.85	23.00	0.734
-------------	-----------	----------	-------	-------	-------	-------	-------	-------

NOTE: Hotspot SAR test results of WCDMA Band II

10.1.5. SAR measurement Result of LTE Band V

Test Position of Head	Test channel /Freq.	Test Mode	SAR Value (W/kg)		Power Drift (±5%)	Conducted power (dBm)	Tune-up power (dBm)	Scaled SAR 1g (W/Kg)
			1g	10g				
1RB								
Left Cheek	20525/836.5	10M QPSK(1,24)	0.158	0.123	-1.34	22.42	22.50	0.161
Left Tilt 15 Degree	20525/836.5	10M QPSK(1,24)	0.105	0.082	1.50	22.42	22.50	0.107
Right Cheek	20525/836.5	10M QPSK(1,24)	0.142	0.110	0.32	22.42	22.50	0.145
Right Tilt 15 Degree	20525/836.5	10M QPSK(1,24)	0.091	0.074	1.47	22.42	22.50	0.093
50%RB								
Left Cheek	20525/836.5	1.4M QPSK(3,1)	0.147	0.116	-2.13	22.31	22.50	0.154
Left Tilt 15 Degree	20525/836.5	1.4M QPSK(3,1)	0.092	0.073	0.51	22.31	22.50	0.096
Right Cheek	20525/836.5	1.4M QPSK(3,1)	0.135	0.106	3.51	22.31	22.50	0.141
Right Tilt 15 Degree	20525/836.5	1.4M QPSK(3,1)	0.085	0.067	2.18	22.31	22.50	0.089

NOTE: Head SAR test results of LTE Band V

Test Position of Body-Worn with 10mm	Test channel /Freq.	Test Mode	SAR Value (W/kg)		Power Drift (±5%)	Conducted power (dBm)	Tune-up power (dBm)	Scaled SAR 1g (W/Kg)
			1g	10g				
1RB								
Front Side	20525/836.5	10M QPSK(1,24)	0.147	0.116	1.50	22.42	22.50	0.150
Back Side	20525/836.5	10M	0.181	0.140	-0.93	22.42	22.50	0.184

		QPSK(1,24)						
50%RB								
Front Side	20525/836.5	1.4M QPSK(3,1)	0.130	0.103	0.25	22.31	22.50	0.136
Back Side	20525/836.5	1.4M QPSK(3,1)	0.174	0.139	0.26	22.31	22.50	0.182

NOTE: Body-Worn SAR test results of LTE Band V

Test Position of Hotspot with 10mm	Test channel /Freq.	Test Mode	SAR Value (W/kg)		Power Drift ($\pm 5\%$)	Conducted power (dBm)	Tune-up power (dBm)	Scaled SAR 1g (W/Kg)
			1g	10g				
1RB								
Front Side	20525/836.5	10M QPSK(1,24)	0.147	0.116	1.50	22.42	22.50	0.150
Back Side	20525/836.5	10M QPSK(1,24)	0.181	0.140	-0.93	22.42	22.50	0.184
Left Side	20525/836.5	10M QPSK(1,24)	0.125	0.100	0.61	22.42	22.50	0.127
Right Side	20525/836.5	10M QPSK(1,24)	0.113	0.092	2.78	22.42	22.50	0.115
Bottom Side	20525/836.5	10M QPSK(1,24)	0.103	0.084	3.64	22.42	22.50	0.105
50%RB								
Front Side	20525/836.5	1.4M QPSK(3,1)	0.130	0.103	0.25	22.31	22.50	0.136
Back Side	20525/836.5	1.4M QPSK(3,1)	0.174	0.139	0.26	22.31	22.50	0.182
Left Side	20525/836.5	1.4M QPSK(3,1)	0.120	0.094	0.25	22.31	22.50	0.125
Right Side	20525/836.5	1.4M QPSK(3,1)	0.106	0.085	-3.24	22.31	22.50	0.111
Bottom Side	20525/836.5	1.4M QPSK(3,1)	0.100	0.078	1.20	22.31	22.50	0.104

NOTE: Hotspot SAR test results of LTE Band V

10.1.6. SAR measurement Result of LTE Band IV

Test Position of Head	Test channel /Freq.	Test Mode	SAR Value (W/kg)		Power Drift ($\pm 5\%$)	Conducted power (dBm)	Tune-up power (dBm)	Scaled SAR 1g (W/Kg)
			1g	10g				
1RB								

Left Cheek	20175/1732.5	20M QPSK(1,49)	0.191	0.125	-1.94	22.78	23.00	0.201
Left Tilt 15 Degree	20175/1732.5	20M QPSK(1,49)	0.124	0.089	0.25	22.78	23.00	0.130
Right Cheek	20175/1732.5	20M QPSK(1,49)	0.178	0.110	0.36	22.78	23.00	0.187
Right Tilt 15 Degree	20175/1732.5	20M QPSK(1,49)	0.114	0.075	0.49	22.78	23.00	0.120
50%RB								
Left Cheek	20175/1732.5	1.4M QPSK(3,2)	0.182	0.115	1.24	22.84	23.00	0.189
Left Tilt 15 Degree	20175/1732.5	1.4M QPSK(3,2)	0.116	0.081	1.60	22.84	23.00	0.120
Right Cheek	20175/1732.5	1.4M QPSK(3,2)	0.171	0.103	-0.34	22.84	23.00	0.177
Right Tilt 15 Degree	20175/1732.5	1.4M QPSK(3,2)	0.107	0.069	2.58	22.84	23.00	0.111

NOTE: Head SAR test results of LTE Band IV

Test Position of Body-Worn with 10mm	Test channel /Freq.	Test Mode	SAR Value (W/kg)		Power Drift (±5%)	Conducted power (dBm)	Tune-up power (dBm)	Scaled SAR 1g (W/Kg)
			1g	10g				
1RB								
Front Side	20175/1732.5	20M QPSK(1,49)	0.356	0.197	1.25	22.78	23.00	0.374
Back Side	20175/1732.5	20M QPSK(1,49)	0.407	0.242	-0.55	22.78	23.00	0.428
50%RB								
Front Side	20175/1732.5	1.4M QPSK(3,2)	0.341	0.182	0.54	22.84	23.00	0.354
Back Side	20175/1732.5	1.4M QPSK(3,2)	0.387	0.228	-0.47	22.84	23.00	0.402

NOTE: Body-Worn SAR test results of LTE Band IV

Test Position of	Test channel /Freq.	Test Mode	SAR Value (W/kg)	Power Drift	Conducted	Tune-up	Scaled SAR 1g
------------------	---------------------	-----------	------------------	-------------	-----------	---------	---------------

Hotspot with 10mm			1g	10g	(±5%)	power (dBm)	power (dBm)	(W/Kg)
1RB								
Front Side	20175/1732.5	20M QPSK(1,49)	0.356	0.197	1.25	22.78	23.00	0.374
Back Side	20175/1732.5	20M QPSK(1,49)	0.407	0.242	-0.55	22.78	23.00	0.428
Left Side	20175/1732.5	20M QPSK(1,49)	0.334	0.207	0.54	22.78	23.00	0.351
Right Side	20175/1732.5	20M QPSK(1,49)	0.327	0.184	1.41	22.78	23.00	0.344
Bottom Side	20175/1732.5	20M QPSK(1,49)	0.369	0.202	-3.32	22.78	23.00	0.388
50%RB								
Front Side	20175/1732.5	1.4M QPSK(3,2)	0.341	0.182	0.54	22.84	23.00	0.354
Back Side	20175/1732.5	1.4M QPSK(3,2)	0.387	0.228	-0.47	22.84	23.00	0.402
Left Side	20175/1732.5	1.4M QPSK(3,2)	0.312	0.189	0.64	22.84	23.00	0.324
Right Side	20175/1732.5	1.4M QPSK(3,2)	0.308	0.172	-1.54	22.84	23.00	0.320
Bottom Side	20175/1732.5	1.4M QPSK(3,2)	0.354	0.193	2.74	22.84	23.00	0.367

NOTE: Hotspot SAR test results of LTE Band IV

10.1.7. SAR measurement Result of LTE Band II

Test Position of Head	Test channel /Freq.	Test Mode	SAR Value (W/kg)		Power Drift (±5%)	Conducted power (dBm)	Tune-up power (dBm)	Scaled SAR 1g (W/Kg)
			1g	10g				
1RB								
Left Cheek	18900/1880	20M QPSK(1,49)	0.096	0.062	-3.71	23.41	23.50	0.098
Left Tilt 15 Degree	18900/1880	20M QPSK(1,49)	0.054	0.029	0.36	23.41	23.50	0.055
Right Cheek	18900/1880	20M QPSK(1,49)	0.089	0.053	2.57	23.41	23.50	0.091
Right	18900/1880	20M QPSK(1,49)	0.041	0.021	1.64	23.41	23.50	0.042

Tilt 15 Degree								
50%RB								
Left Cheek	18900/1880	1.4M QPSK(3,1)	0.092	0.056	-2.07	23.31	23.50	0.096
Left Tilt 15 Degree	18900/1880	1.4M QPSK(3,1)	0.049	0.022	1.74	23.31	23.50	0.051
Right Cheek	18900/1880	1.4M QPSK(3,1)	0.082	0.047	3.01	23.31	23.50	0.086
Right Tilt 15 Degree	18900/1880	1.4M QPSK(3,1)	0.037	0.016	2.59	23.31	23.50	0.039

NOTE: Head SAR test results of LTE Band II

Test Position of Body-Worn with 10mm	Test channel /Freq.	Test Mode	SAR Value (W/kg)		Power Drift (±5%)	Conducted power (dBm)	Tune-up power (dBm)	Scaled SAR 1g (W/Kg)
			1g	10g				
1RB								
Front Side	18900/1880	20M QPSK(1,49)	0.392	0.220	2.58	23.41	23.50	0.400
Back Side	18900/1880	20M QPSK(1,49)	0.443	0.245	-1.25	23.41	23.50	0.452
50%RB								
Front Side	18900/1880	1.4M QPSK(3,1)	0.380	0.217	0.54	23.31	23.50	0.397
Back Side	18900/1880	1.4M QPSK(3,1)	0.428	0.225	1.57	23.31	23.50	0.447

NOTE: Body-Worn SAR test results of LTE Band II

Test Position of Hotspot with 10mm	Test channel /Freq.	Test Mode	SAR Value (W/kg)		Power Drift (±5%)	Conducted power (dBm)	Tune-up power (dBm)	Scaled SAR 1g (W/Kg)
			1g	10g				
1RB								
Front Side	18900/1880	20M QPSK(1,49)	0.392	0.220	2.58	23.41	23.50	0.400
Back Side	18900/1880	20M QPSK(1,49)	0.443	0.245	-1.25	23.41	23.50	0.452
Left Side	18900/1880	20M QPSK(1,49)	0.365	0.210	0.27	23.41	23.50	0.373
Right Side	18900/1880	20M QPSK(1,49)	0.351	0.203	3.61	23.41	23.50	0.358
Bottom	18900/1880	20M	0.539	0.279	-1.20	23.41	23.50	0.550

Side		QPSK(1,49)						
50%RB								
Front Side	18900/1880	1.4M QPSK(3,1)	0.380	0.217	0.54	23.31	23.50	0.397
Back Side	18900/1880	1.4M QPSK(3,1)	0.428	0.225	1.57	23.31	23.50	0.447
Left Side	18900/1880	1.4M QPSK(3,1)	0.346	0.201	0.39	23.31	23.50	0.361
Right Side	18900/1880	1.4M QPSK(3,1)	0.337	0.189	-0.27	23.31	23.50	0.352
Bottom Side	18900/1880	1.4M QPSK(3,1)	0.503	0.259	1.48	23.31	23.50	0.525

NOTE: Hotspot SAR test results of LTE Band II

10.1.8. SAR measurement Result of LTE Band VII

Test Position of Head	Test channel /Freq.	Test Mode	SAR Value (W/kg)		Power Drift (±5%)	Conducted power (dBm)	Tune-up power (dBm)	Scaled SAR 1g (W/Kg)
			1g	10g				
1RB								
Left Cheek	21100/2535	20M QPSK(1,49)	0.134	0.082	-2.24	23.33	23.50	0.139
Left Tilt 15 Degree	21100/2535	20M QPSK(1,49)	0.097	0.058	3.31	23.33	23.50	0.101
Right Cheek	21100/2535	20M QPSK(1,49)	0.124	0.075	2.57	23.33	23.50	0.129
Right Tilt 15 Degree	21100/2535	20M QPSK(1,49)	0.082	0.047	-0.27	23.33	23.50	0.085
50%RB								
Left Cheek	21100/2535	20M QPSK(50,0)	0.112	0.072	0.36	22.30	22.50	0.117
Left Tilt 15 Degree	21100/2535	20M QPSK(50,0)	0.080	0.045	0.28	22.30	22.50	0.084
Right Cheek	21100/2535	20M QPSK(50,0)	0.102	0.061	1.47	22.30	22.50	0.107
Right Tilt 15 Degree	21100/2535	20M QPSK(50,0)	0.065	0.032	-0.37	22.30	22.50	0.068

NOTE: Head SAR test results of LTE Band VII

Test	Test channel	Test Mode	SAR Value	Power	Conduc	Tune-u	Scaled
------	--------------	-----------	-----------	-------	--------	--------	--------

Position of Body-Worn with 10mm	/Freq.		(W/kg)		Drift (±5%)	Conducted power (dBm)	Power power (dBm)	SAR 1g (W/Kg)
			1g	10g				
1RB								
Front Side	21100/2535	20M QPSK(1,49)	0.298	0.178	0.25	23.33	23.50	0.310
Back Side	21100/2535	20M QPSK(1,49)	0.348	0.204	-0.75	23.33	23.50	0.362
50%RB								
Front Side	21100/2535	20M QPSK(50,0)	0.274	0.162	0.27	22.30	22.50	0.287
Back Side	21100/2535	20M QPSK(50,0)	0.325	0.188	1.48	22.30	22.50	0.340

NOTE: Body-Worn SAR test results of LTE Band VII

Test Position of Hotspot with 10mm	Test channel /Freq.	Test Mode	SAR Value (W/kg)		Power Drift (±5%)	Conducted power (dBm)	Tune-up power (dBm)	Scaled SAR 1g (W/Kg)
			1g	10g				
1RB								
Front Side	21100/2535	20M QPSK(1,49)	0.298	0.178	0.25	23.33	23.50	0.310
Back Side	21100/2535	20M QPSK(1,49)	0.348	0.204	-0.75	23.33	23.50	0.362
Left Side	21100/2535	20M QPSK(1,49)	0.267	0.157	-0.14	23.33	23.50	0.278
Right Side	21100/2535	20M QPSK(1,49)	0.225	0.138	2.58	23.33	23.50	0.234
Bottom Side	21100/2535	20M QPSK(1,49)	0.217	0.116	-0.97	23.33	23.50	0.226
50%RB								
Front Side	21100/2535	20M QPSK(50,0)	0.274	0.162	0.27	22.30	22.50	0.287
Back Side	21100/2535	20M QPSK(50,0)	0.325	0.188	1.48	22.30	22.50	0.340
Left Side	21100/2535	20M QPSK(50,0)	0.247	0.142	-3.24	22.30	22.50	0.259
Right Side	21100/2535	20M QPSK(50,0)	0.204	0.121	1.65	22.30	22.50	0.214
Bottom Side	21100/2535	20M QPSK(50,0)	0.195	0.102	-1.04	22.30	22.50	0.204

NOTE: Hotspot SAR test results of LTE Band VII

10.1.9. SAR measurement Result of WLAN 2.4G

Test Position of Head	Test channel /Freq.	Test Mode	SAR Value (W/kg)		Power Drift (±5%)	Conducted power (dBm)	Tune-up power (dBm)	Scaled SAR 1g (W/Kg)
			1g	10g				
Left Cheek	6/2437	802.11 b	0.293	0.158	-3.03	12.60	13.50	0.360
Left Tilt 15 Degree	6/2437	802.11 b	0.187	0.059	0.21	12.60	13.50	0.230
Right Cheek	6/2437	802.11 b	0.271	0.142	1.48	12.60	13.50	0.333
Right Tilt 15 Degree	6/2437	802.11 b	0.170	0.051	-3.21	12.60	13.50	0.209

NOTE: Head SAR test results of WLAN 2.4G

Test Position of Body-Worn with 10mm	Test channel /Freq.	Test Mode	SAR Value (W/kg)		Power Drift (±5%)	Conducted power (dBm)	Tune-up power (dBm)	Scaled SAR 1g (W/Kg)
			1g	10g				
Front Side	6/2437	802.11 b	0.201	0.121	0.54	12.60	13.50	0.247
Back Side	6/2437	802.11 b	0.256	0.142	-1.67	12.60	13.50	0.315

NOTE: Body-Worn SAR test results of WLAN 2.4G

Test Position of Hotspot with 10mm	Test channel /Freq.	Test Mode	SAR Value (W/kg)		Power Drift (±5%)	Conducted power (dBm)	Tune-up power (dBm)	Scaled SAR 1g (W/Kg)
			1g	10g				
Front Side	6/2437	802.11 b	0.201	0.121	0.54	12.60	13.50	0.247
Back Side	6/2437	802.11 b	0.256	0.142	-1.67	12.60	13.50	0.315
Right Side	6/2437	802.11 b	0.132	0.068	0.36	12.60	13.50	0.162
Top Side	6/2437	802.11 b	0.174	0.095	-1.35	12.60	13.50	0.214

NOTE: Hotspot SAR test results of WLAN 2.4G

10.2. SAR Summation Scenario

Per KDB 447498 D01, simultaneous transmission SAR is compliant if,

- 1) Scalar SAR summation < 1.6W/kg.
- 2) $SPLSR = (SAR_1 + SAR_2)^{1.5} / (\text{min. separation distance, mm})$, and the peak separation distance is determined from the square root of $[(x_1-x_2)^2 + (y_1-y_2)^2 + (z_1-z_2)^2]$, where (x_1, y_1, z_1) and (x_2, y_2, z_2) are the coordinates of the extrapolated peak SAR locations in the zoom scan. If $SPLSR \leq 0.04$, simultaneously transmission SAR measurement is not necessary.

Test Position	Scaled SAR _{MAX}	∑ 1-g SAR	SPLSR	Remark
---------------	---------------------------	-----------	-------	--------

		GSM 850	WLAN 2.4G	(W/Kg)		
Head	Left Cheek	0.541	0.360	0.901	N/A	N/A
	Left Tilt 15 Degree	0.395	0.230	0.625	N/A	N/A
	Right Cheek	0.527	0.333	0.860	N/A	N/A
	Right Tilt 15 Degree	0.369	0.209	0.578	N/A	N/A
Body-Worn	Front Side	0.464	0.247	0.711	N/A	N/A
	Back Side	0.599	0.315	0.914	N/A	N/A
Hotspot	Front Side	0.464	0.247	0.711	N/A	N/A
	Back Side	0.599	0.315	0.914	N/A	N/A
	Left Side	0.443	N/A	0.443	N/A	N/A
	Right Side	0.438	0.162	0.600	N/A	N/A
	Top Side	N/A	0.214	0.214	N/A	N/A
	Bottom Side	0.426	N/A	0.426	N/A	N/A

NOTE: 1-g SAR Simultaneous Tx Combination of GSM850 and WLAN 2.4G.

Test Position		Scaled SAR _{MAX}		Σ 1-g SAR (W/Kg)	SPLSR	Remark
		GSM 1900	WLAN 2.4G			
Head	Left Cheek	0.119	0.360	0.479	N/A	N/A
	Left Tilt 15 Degree	0.082	0.230	0.312	N/A	N/A
	Right Cheek	0.108	0.333	0.441	N/A	N/A
	Right Tilt 15 Degree	0.075	0.209	0.284	N/A	N/A
Body-Worn	Front Side	0.650	0.247	0.897	N/A	N/A
	Back Side	0.698	0.315	1.013	N/A	N/A
Hotspot	Front Side	0.650	0.247	0.897	N/A	N/A
	Back Side	0.698	0.315	1.013	N/A	N/A
	Left Side	0.117	N/A	0.117	N/A	N/A
	Right Side	0.267	0.162	0.429	N/A	N/A
	Top Side	N/A	0.214	0.214	N/A	N/A
	Bottom Side	0.782	N/A	0.782	N/A	N/A

NOTE: 1-g SAR Simultaneous Tx Combination of GSM1900 and WLAN 2.4G.

Test Position		Scaled SAR _{MAX}		Σ 1-g SAR (W/Kg)	SPLSR	Remark
		WCDMA Band V	WLAN 2.4G			
Head	Left Cheek	0.174	0.360	0.534	N/A	N/A
	Left Tilt 15 Degree	0.122	0.230	0.352	N/A	N/A
	Right Cheek	0.167	0.333	0.500	N/A	N/A
	Right Tilt 15 Degree	0.115	0.209	0.324	N/A	N/A
Body-Worn	Front Side	0.157	0.247	0.404	N/A	N/A

	Back Side	0.202	0.315	0.517	N/A	N/A
Hotspot	Front Side	0.157	0.247	0.404	N/A	N/A
	Back Side	0.202	0.315	0.517	N/A	N/A
	Left Side	0.084	N/A	0.084	N/A	N/A
	Right Side	0.082	0.162	0.244	N/A	N/A
	Top Side	N/A	0.214	0.214	N/A	N/A
	Bottom Side	0.098	N/A	0.098	N/A	N/A

NOTE: 1-g SAR Simultaneous Tx Combination of WCDMA Band V and WLAN 2.4G.

Test Position		Scaled SAR _{MAX}		Σ 1-g SAR (W/Kg)	SPLSR	Remark
		WCDMA Band II	WLAN 2.4G			
Head	Left Cheek	0.121	0.360	0.481	N/A	N/A
	Left Tilt 15 Degree	0.065	0.230	0.295	N/A	N/A
	Right Cheek	0.096	0.333	0.429	N/A	N/A
	Right Tilt 15 Degree	0.056	0.209	0.265	N/A	N/A
Body-Worn	Front Side	0.519	0.247	0.766	N/A	N/A
	Back Side	0.593	0.315	0.908	N/A	N/A
Hotspot	Front Side	0.519	0.247	0.766	N/A	N/A
	Back Side	0.593	0.315	0.908	N/A	N/A
	Left Side	0.323	N/A	0.323	N/A	N/A
	Right Side	0.336	0.162	0.498	N/A	N/A
	Top Side	N/A	0.214	0.214	N/A	N/A
	Bottom Side	0.734	N/A	0.734	N/A	N/A

NOTE: 1-g SAR Simultaneous Tx Combination of WCDMA Band II and WLAN 2.4G.

Test Position		Scaled SAR _{MAX}		Σ 1-g SAR (W/Kg)	SPLSR	Remark
		LTE Band V	WLAN 2.4G			
Head	Left Cheek	0.161	0.360	0.521	N/A	N/A
	Left Tilt 15 Degree	0.107	0.230	0.337	N/A	N/A
	Right Cheek	0.145	0.333	0.478	N/A	N/A
	Right Tilt 15 Degree	0.093	0.209	0.302	N/A	N/A
Body-Worn	Front Side	0.150	0.247	0.397	N/A	N/A
	Back Side	0.184	0.315	0.499	N/A	N/A
Hotspot	Front Side	0.150	0.247	0.397	N/A	N/A
	Back Side	0.184	0.315	0.499	N/A	N/A
	Left Side	0.127	N/A	0.127	N/A	N/A
	Right Side	0.115	0.162	0.277	N/A	N/A
	Top Side	N/A	0.214	0.214	N/A	N/A

	Bottom Side	0.105	N/A	0.105	N/A	N/A
--	-------------	-------	-----	-------	-----	-----

NOTE: 1-g SAR Simultaneous Tx Combination of LTE Band V and WLAN 2.4G.

Test Position		Scaled SAR _{MAX}		Σ 1-g SAR (W/Kg)	SPLSR	Remark
		LTE Band IV	WLAN 2.4G			
Head	Left Cheek	0.201	0.360	0.561	N/A	N/A
	Left Tilt 15 Degree	0.130	0.230	0.360	N/A	N/A
	Right Cheek	0.187	0.333	0.520	N/A	N/A
	Right Tilt 15 Degree	0.120	0.209	0.329	N/A	N/A
Body-Worn	Front Side	0.374	0.247	0.621	N/A	N/A
	Back Side	0.428	0.315	0.743	N/A	N/A
Hotspot	Front Side	0.374	0.247	0.621	N/A	N/A
	Back Side	0.428	0.315	0.743	N/A	N/A
	Left Side	0.351	N/A	0.351	N/A	N/A
	Right Side	0.344	0.162	0.506	N/A	N/A
	Top Side	N/A	0.214	0.214	N/A	N/A
	Bottom Side	0.388	N/A	0.388	N/A	N/A

NOTE: 1-g SAR Simultaneous Tx Combination of LTE Band IV and WLAN 2.4G.

Test Position		Scaled SAR _{MAX}		Σ 1-g SAR (W/Kg)	SPLSR	Remark
		LTE Band II	WLAN 2.4G			
Head	Left Cheek	0.098	0.360	0.458	N/A	N/A
	Left Tilt 15 Degree	0.055	0.230	0.285	N/A	N/A
	Right Cheek	0.091	0.333	0.424	N/A	N/A
	Right Tilt 15 Degree	0.042	0.209	0.251	N/A	N/A
Body-Worn	Front Side	0.400	0.247	0.647	N/A	N/A
	Back Side	0.452	0.315	0.767	N/A	N/A
Hotspot	Front Side	0.400	0.247	0.647	N/A	N/A
	Back Side	0.452	0.315	0.767	N/A	N/A
	Left Side	0.373	N/A	0.373	N/A	N/A
	Right Side	0.358	0.162	0.520	N/A	N/A
	Top Side	N/A	0.214	0.214	N/A	N/A
	Bottom Side	0.550	N/A	0.550	N/A	N/A

NOTE: 1-g SAR Simultaneous Tx Combination of LTE Band II and WLAN 2.4G.

Test Position		Scaled SAR _{MAX}		Σ 1-g SAR (W/Kg)	SPLSR	Remark
		LTE Band VII	WLAN 2.4G			
Head	Left Cheek	0.139	0.360	0.499	N/A	N/A
	Left Tilt 15	0.101	0.230	0.331	N/A	N/A

	Degree					
	Right Cheek	0.129	0.333	0.462	N/A	N/A
	Right Tilt 15 Degree	0.085	0.209	0.294	N/A	N/A
Body-Worn	Front Side	0.310	0.247	0.557	N/A	N/A
	Back Side	0.362	0.315	0.677	N/A	N/A
Hotspot	Front Side	0.310	0.247	0.557	N/A	N/A
	Back Side	0.362	0.315	0.677	N/A	N/A
	Left Side	0.278	N/A	0.278	N/A	N/A
	Right Side	0.234	0.162	0.396	N/A	N/A
	Top Side	N/A	0.214	0.214	N/A	N/A
	Bottom Side	0.226	N/A	0.226	N/A	N/A

NOTE: 1-g SAR Simultaneous Tx Combination of LTE Band VII and WLAN 2.4G.

Test Position		Scaled SAR _{MAX}		Σ 1-g SAR (W/Kg)	SPLSR	Remark
		GSM 850	Bluetooth			
Head	Left Cheek	0.541	0.167	0.708	N/A	N/A
	Left Tilt 15 Degree	0.395	0.167	0.562	N/A	N/A
	Right Cheek	0.527	0.167	0.694	N/A	N/A
	Right Tilt 15 Degree	0.369	0.167	0.536	N/A	N/A
Body-Worn	Front Side	0.464	0.084	0.548	N/A	N/A
	Back Side	0.599	0.084	0.683	N/A	N/A
Hotspot	Front Side	0.464	0.084	0.548	N/A	N/A
	Back Side	0.599	0.084	0.683	N/A	N/A
	Left Side	0.443	N/A	0.443	N/A	N/A
	Right Side	0.438	0.084	0.522	N/A	N/A
	Top Side	N/A	0.084	0.084	N/A	N/A
	Bottom Side	0.426	N/A	0.426	N/A	N/A

NOTE: 1-g SAR Simultaneous Tx Combination of GSM850 and Bluetooth.

Test Position		Scaled SAR _{MAX}		Σ 1-g SAR (W/Kg)	SPLSR	Remark
		GSM 1900	Bluetooth			
Head	Left Cheek	0.119	0.167	0.286	N/A	N/A
	Left Tilt 15 Degree	0.082	0.167	0.249	N/A	N/A
	Right Cheek	0.108	0.167	0.275	N/A	N/A
	Right Tilt 15 Degree	0.075	0.167	0.242	N/A	N/A
Body-Worn	Front Side	0.650	0.084	0.734	N/A	N/A
	Back Side	0.698	0.084	0.782	N/A	N/A
Hotspot	Front Side	0.650	0.084	0.734	N/A	N/A

	Back Side	0.698	0.084	0.782	N/A	N/A
	Left Side	0.117	N/A	0.117	N/A	N/A
	Right Side	0.267	0.084	0.351	N/A	N/A
	Top Side	N/A	0.084	0.084	N/A	N/A
	Bottom Side	0.782	N/A	0.782	N/A	N/A

NOTE: 1-g SAR Simultaneous Tx Combination of GSM1900 and Bluetooth.

Test Position		Scaled SAR _{MAX}		Σ 1-g SAR (W/Kg)	SPLSR	Remark
		WCDMA Band V	Bluetooth			
Head	Left Cheek	0.174	0.167	0.341	N/A	N/A
	Left Tilt 15 Degree	0.122	0.167	0.289	N/A	N/A
	Right Cheek	0.167	0.167	0.334	N/A	N/A
	Right Tilt 15 Degree	0.115	0.167	0.282	N/A	N/A
Body-Worn	Front Side	0.157	0.084	0.241	N/A	N/A
	Back Side	0.202	0.084	0.286	N/A	N/A
Hotspot	Front Side	0.157	0.084	0.241	N/A	N/A
	Back Side	0.202	0.084	0.286	N/A	N/A
	Left Side	0.084	N/A	0.084	N/A	N/A
	Right Side	0.082	0.084	0.166	N/A	N/A
	Top Side	N/A	0.084	0.084	N/A	N/A
	Bottom Side	0.098	N/A	0.098	N/A	N/A

NOTE: 1-g SAR Simultaneous Tx Combination of WCDMA Band V and Bluetooth.

Test Position		Scaled SAR _{MAX}		Σ 1-g SAR (W/Kg)	SPLSR	Remark
		WCDMA Band II	Bluetooth			
Head	Left Cheek	0.121	0.167	0.288	N/A	N/A
	Left Tilt 15 Degree	0.065	0.167	0.232	N/A	N/A
	Right Cheek	0.096	0.167	0.263	N/A	N/A
	Right Tilt 15 Degree	0.056	0.167	0.223	N/A	N/A
Body-Worn	Front Side	0.519	0.084	0.603	N/A	N/A
	Back Side	0.593	0.084	0.677	N/A	N/A
Hotspot	Front Side	0.519	0.084	0.603	N/A	N/A
	Back Side	0.593	0.084	0.677	N/A	N/A
	Left Side	0.323	N/A	0.323	N/A	N/A
	Right Side	0.336	0.084	0.420	N/A	N/A
	Top Side	N/A	0.084	0.084	N/A	N/A
	Bottom Side	0.734	N/A	0.734	N/A	N/A

NOTE: 1-g SAR Simultaneous Tx Combination of WCDMA Band II and Bluetooth.

Test Position		Scaled SAR _{MAX}		Σ 1-g SAR (W/Kg)	SPLSR	Remark
		LTE Band V	Bluetooth			
Head	Left Cheek	0.161	0.167	0.328	N/A	N/A
	Left Tilt 15 Degree	0.107	0.167	0.274	N/A	N/A
	Right Cheek	0.145	0.167	0.312	N/A	N/A
	Right Tilt 15 Degree	0.093	0.167	0.260	N/A	N/A
Body-Worn	Front Side	0.150	0.084	0.234	N/A	N/A
	Back Side	0.184	0.084	0.268	N/A	N/A
Hotspot	Front Side	0.150	0.084	0.234	N/A	N/A
	Back Side	0.184	0.084	0.268	N/A	N/A
	Left Side	0.127	N/A	0.127	N/A	N/A
	Right Side	0.115	0.084	0.199	N/A	N/A
	Top Side	N/A	0.084	0.084	N/A	N/A
	Bottom Side	0.105	N/A	0.105	N/A	N/A

NOTE: 1-g SAR Simultaneous Tx Combination of LTE Band V and Bluetooth.

Test Position		Scaled SAR _{MAX}		Σ 1-g SAR (W/Kg)	SPLSR	Remark
		LTE Band IV	Bluetooth			
Head	Left Cheek	0.201	0.167	0.368	N/A	N/A
	Left Tilt 15 Degree	0.130	0.167	0.297	N/A	N/A
	Right Cheek	0.187	0.167	0.354	N/A	N/A
	Right Tilt 15 Degree	0.120	0.167	0.287	N/A	N/A
Body-Worn	Front Side	0.374	0.084	0.458	N/A	N/A
	Back Side	0.428	0.084	0.512	N/A	N/A
Hotspot	Front Side	0.374	0.084	0.458	N/A	N/A
	Back Side	0.428	0.084	0.512	N/A	N/A
	Left Side	0.351	N/A	0.351	N/A	N/A
	Right Side	0.344	0.084	0.428	N/A	N/A
	Top Side	N/A	0.084	0.084	N/A	N/A
	Bottom Side	0.388	N/A	0.388	N/A	N/A

NOTE: 1-g SAR Simultaneous Tx Combination of LTE Band IV and Bluetooth.

Test Position		Scaled SAR _{MAX}		Σ 1-g SAR (W/Kg)	SPLSR	Remark
		LTE Band II	Bluetooth			
Head	Left Cheek	0.098	0.167	0.265	N/A	N/A
	Left Tilt 15 Degree	0.055	0.167	0.222	N/A	N/A
	Right Cheek	0.091	0.167	0.258	N/A	N/A
	Right Tilt 15	0.042	0.167	0.209	N/A	N/A

	Degree					
Body-Worn	Front Side	0.400	0.084	0.484	N/A	N/A
	Back Side	0.452	0.084	0.536	N/A	N/A
Hotspot	Front Side	0.400	0.084	0.484	N/A	N/A
	Back Side	0.452	0.084	0.536	N/A	N/A
	Left Side	0.373	N/A	0.373	N/A	N/A
	Right Side	0.358	0.084	0.442	N/A	N/A
	Top Side	N/A	0.084	0.084	N/A	N/A
	Bottom Side	0.550	N/A	0.550	N/A	N/A

NOTE: 1-g SAR Simultaneous Tx Combination of LTE Band II and Bluetooth.

Test Position		Scaled SAR _{MAX}		Σ 1-g SAR (W/Kg)	SPLSR	Remark
		LTE Band VII	Bluetooth			
Head	Left Cheek	0.139	0.167	0.306	N/A	N/A
	Left Tilt 15 Degree	0.101	0.167	0.268	N/A	N/A
	Right Cheek	0.129	0.167	0.296	N/A	N/A
	Right Tilt 15 Degree	0.085	0.167	0.252	N/A	N/A
Body-Worn	Front Side	0.310	0.084	0.394	N/A	N/A
	Back Side	0.362	0.084	0.446	N/A	N/A
Hotspot	Front Side	0.310	0.084	0.394	N/A	N/A
	Back Side	0.362	0.084	0.446	N/A	N/A
	Left Side	0.278	N/A	0.278	N/A	N/A
	Right Side	0.234	0.084	0.318	N/A	N/A
	Top Side	N/A	0.084	0.084	N/A	N/A
	Bottom Side	0.226	N/A	0.226	N/A	N/A

NOTE: 1-g SAR Simultaneous Tx Combination of LTE Band VII and Bluetooth.

11. Appendix A. Photo documentation

Refer to appendix Test Setup photo---SAR

12. Appendix B. System Check Plots

Table of contents
MEASUREMENT 1 System Performance Check - SID835 - Head
MEASUREMENT 2 System Performance Check - SID835 - Body
MEASUREMENT 3 System Performance Check - SID1800 - Head
MEASUREMENT 4 System Performance Check - SID1800 - Body
MEASUREMENT 5 System Performance Check - SID1900 - Head
MEASUREMENT 6 System Performance Check - SID1900 - Body
MEASUREMENT 7 System Performance Check - SID2450 - Head
MEASUREMENT 8 System Performance Check - SID2450 - Body
MEASUREMENT 9 System Performance Check - SID2600 - Head
MEASUREMENT 10 System Performance Check - SID2600 - Body

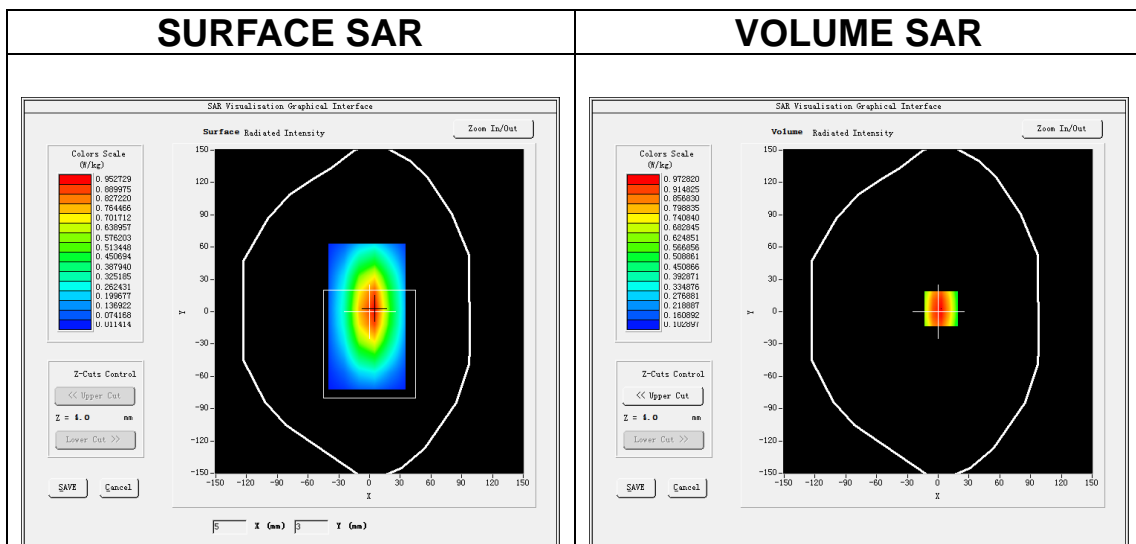
MEASUREMENT 1

A. Experimental conditions.

Area Scan	<u>dx=15mm dy=15mm, h= 5.00 mm</u>
ZoomScan	<u>5x5x7,dx=8mm dy=8mm dz=5mm</u>
Phantom	<u>Validation plane</u>
Device Position	<u>Dipole</u>
Band	<u>CW835</u>
Channels	<u>Middle</u>
Signal	<u>CW (Crest factor: 1.0)</u>

B. SAR Measurement Results

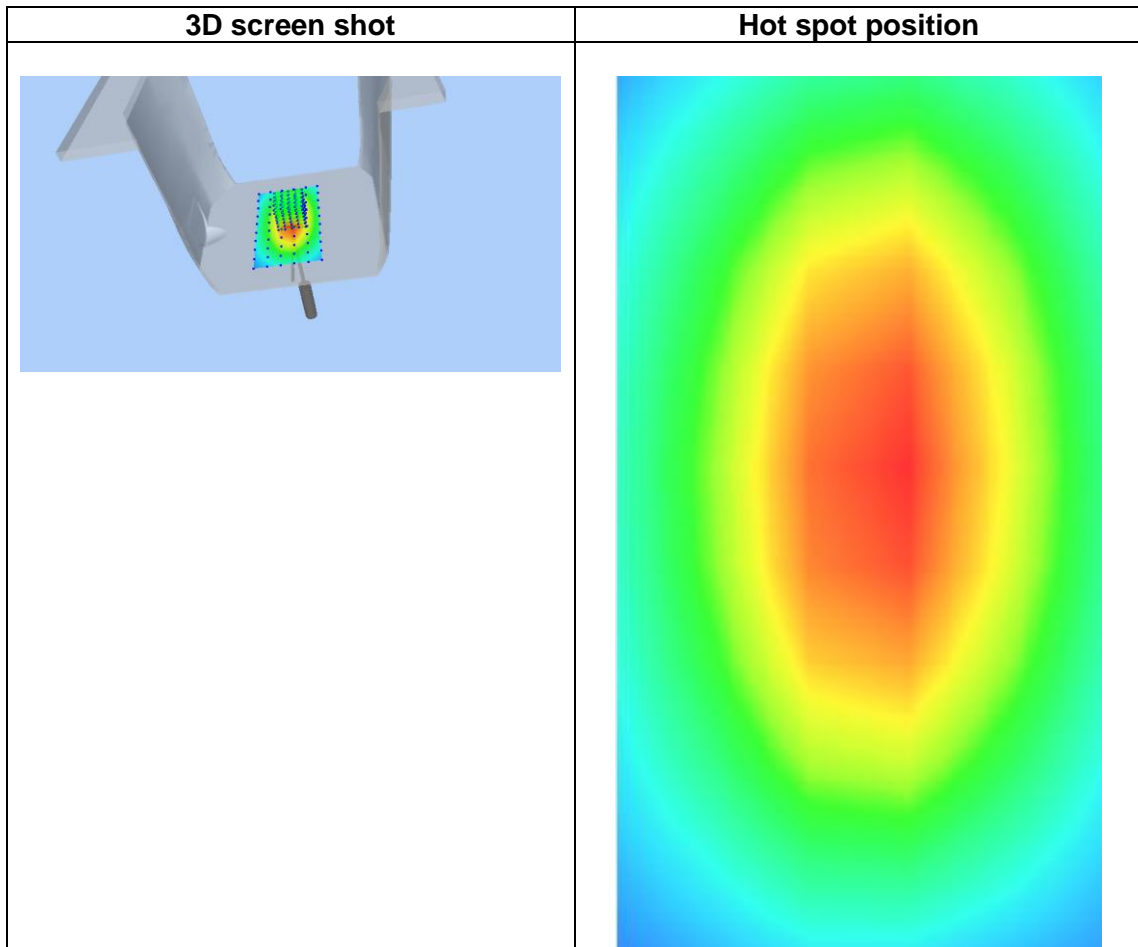
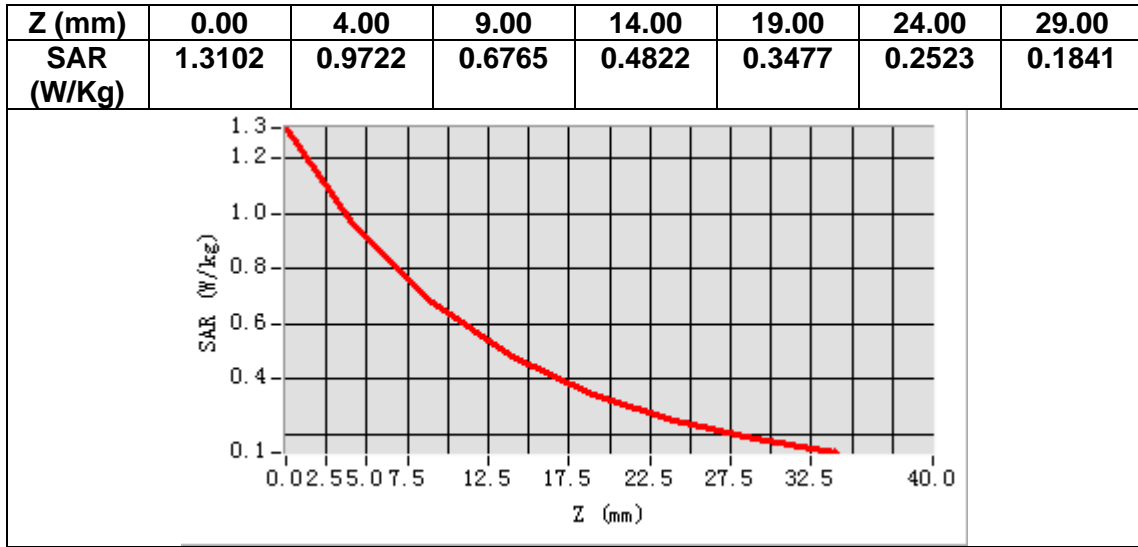
Frequency (MHz)	835.000000
Relative permittivity (real part)	41.623406
Relative permittivity (imaginary part)	19.493425
Conductivity (S/m)	0.902574
Variation (%)	-0.010000



Maximum location: X=3.00, Y=3.00

SAR Peak: 1.31 W/kg

SAR 10g (W/Kg)	0.611228
SAR 1g (W/Kg)	0.956014



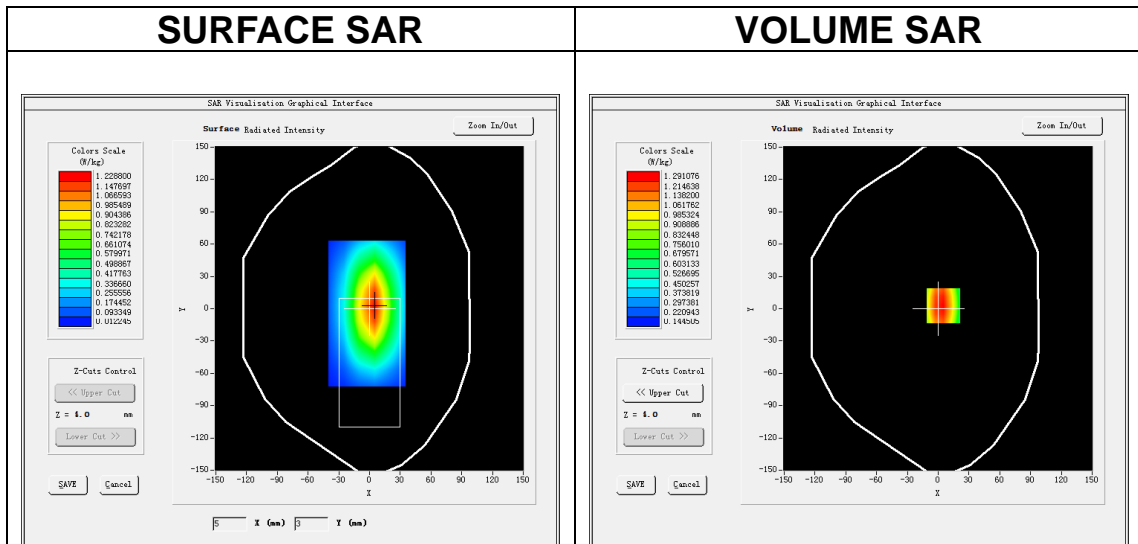
MEASUREMENT 2

A. Experimental conditions.

Area Scan	<u>dx=15mm dy=15mm, h= 5.00 mm</u>
ZoomScan	<u>5x5x7,dx=8mm dy=8mm dz=5mm</u>
Phantom	<u>Validation plane</u>
Device Position	<u>Dipole</u>
Band	<u>CW835</u>
Channels	<u>Middle</u>
Signal	<u>CW (Crest factor: 1.0)</u>

B. SAR Measurement Results

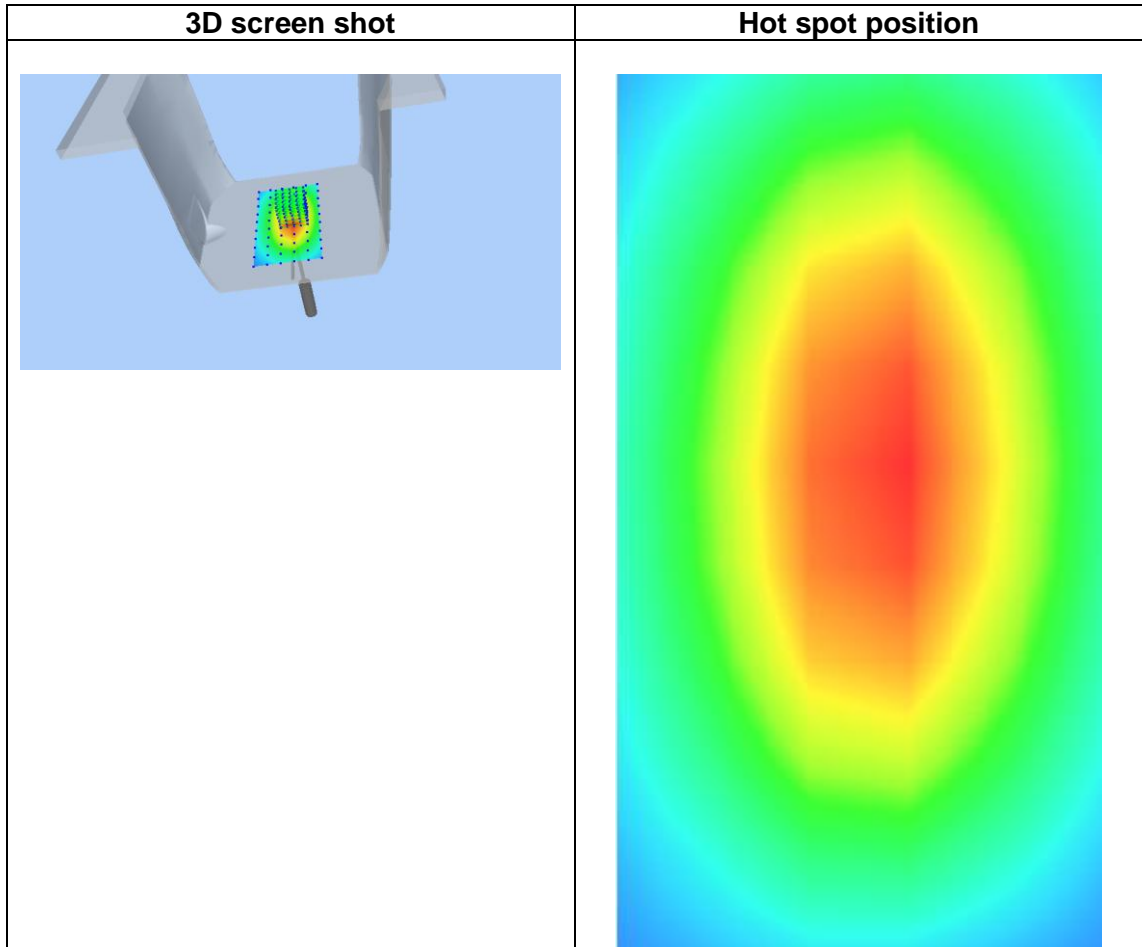
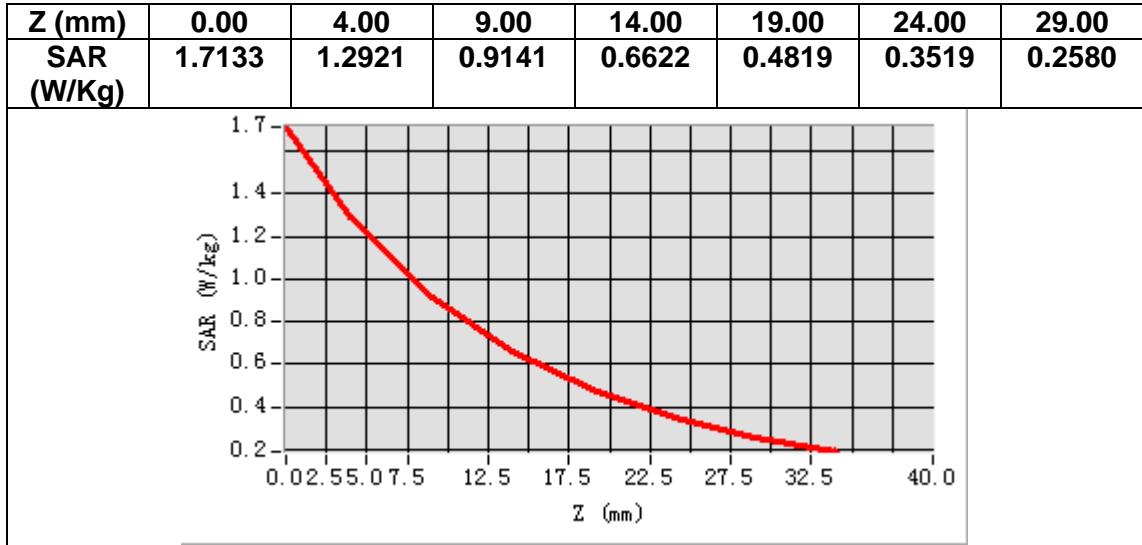
Frequency (MHz)	835.000000
Relative permittivity (real part)	54.890021
Relative permittivity (imaginary part)	21.510010
Conductivity (S/m)	1.001144
Variation (%)	3.820000



Maximum location: X=5.00, Y=3.00

SAR Peak: 1.73 W/kg

SAR 10g (W/Kg)	0.599365
SAR 1g (W/Kg)	1.021284



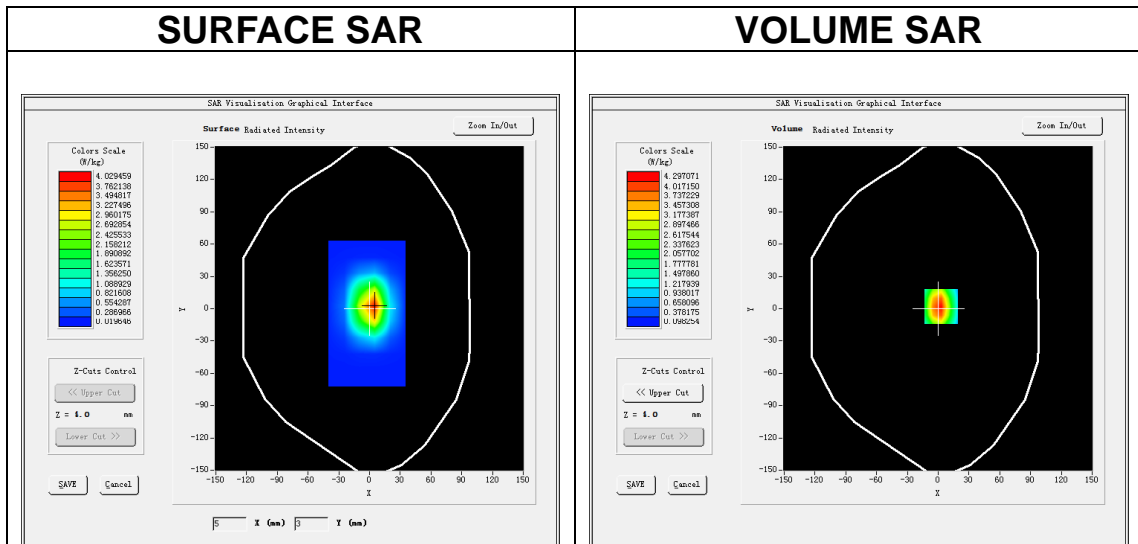
MEASUREMENT 3

A. Experimental conditions.

Area Scan	<u>dx=15mm dy=15mm, h= 5.00 mm</u>
ZoomScan	<u>5x5x7,dx=8mm dy=8mm dz=5mm</u>
Phantom	<u>Validation plane</u>
Device Position	<u>Dipole</u>
Band	<u>CW1800</u>
Channels	<u>Middle</u>
Signal	<u>CW (Crest factor: 1.0)</u>

B. SAR Measurement Results

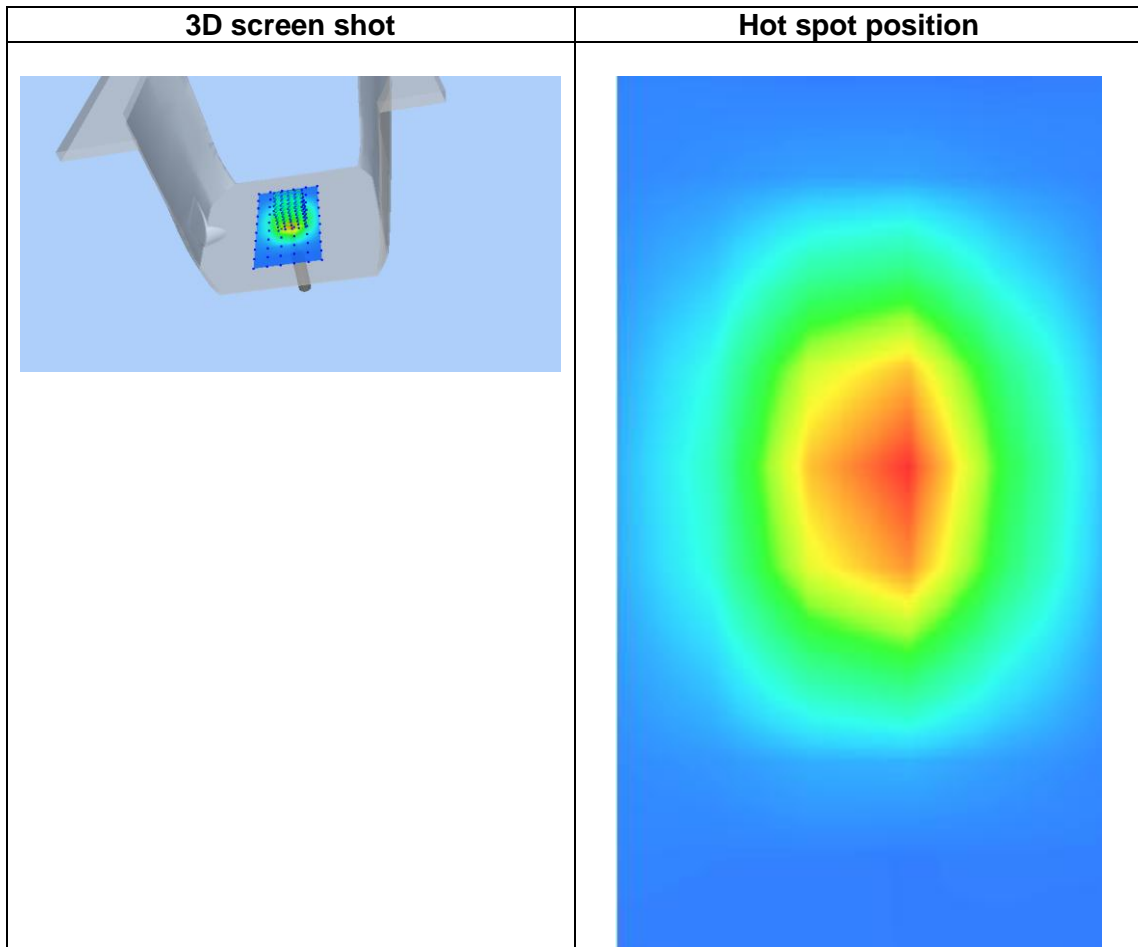
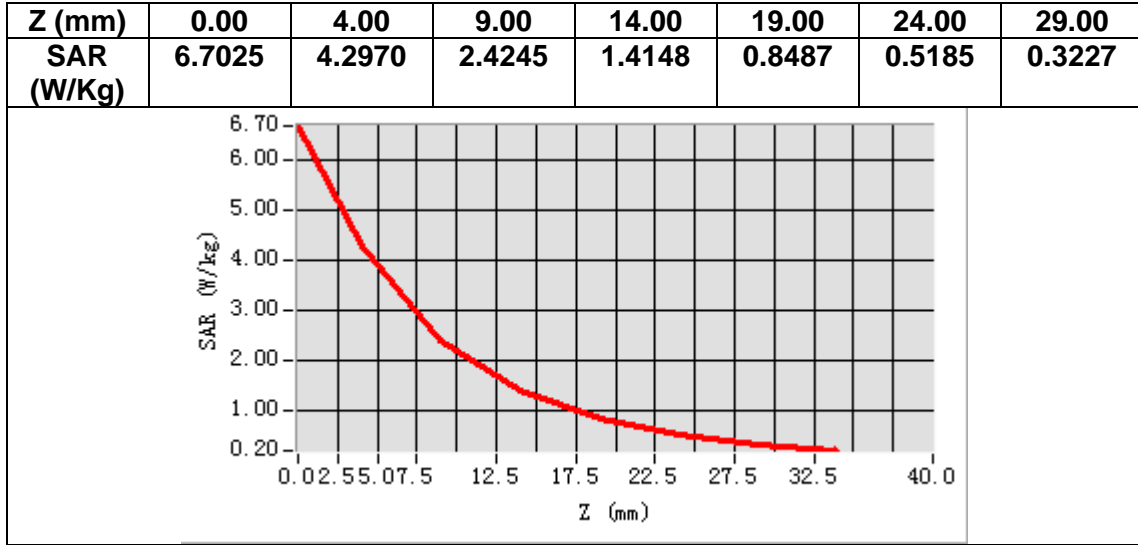
Frequency (MHz)	1800.000000
Relative permittivity (real part)	39.492657
Relative permittivity (imaginary part)	13.953442
Conductivity (S/m)	1.401324
Variation (%)	-0.190000



Maximum location: X=3.00, Y=2.00

SAR Peak: 6.78 W/kg

SAR 10g (W/Kg)	2.121427
SAR 1g (W/Kg)	4.084294



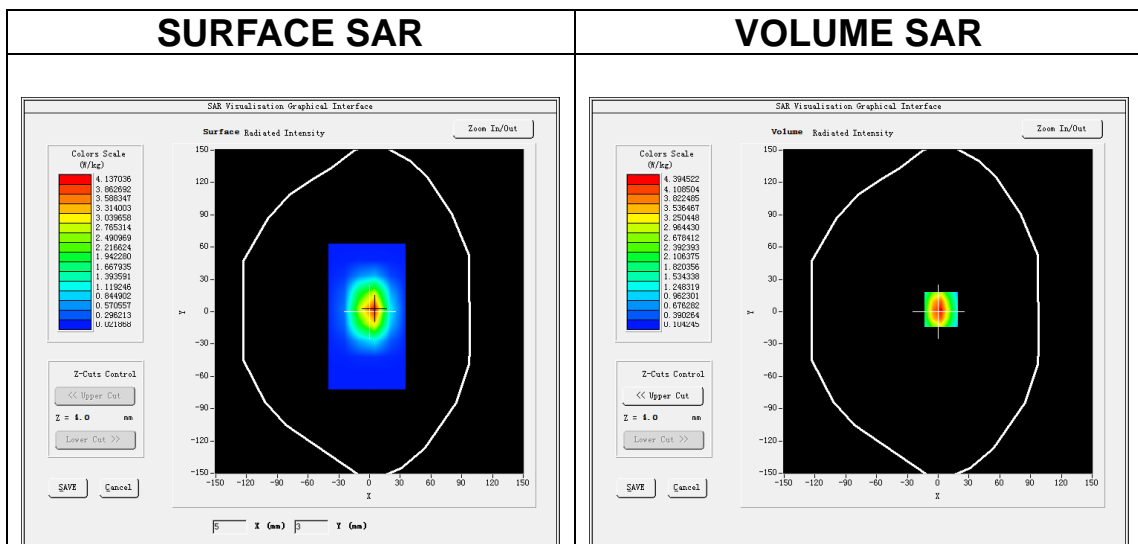
MEASUREMENT 4

A. Experimental conditions.

Area Scan	<u>dx=15mm dy=15mm, h= 5.00 mm</u>
ZoomScan	<u>5x5x7,dx=8mm dy=8mm dz=5mm</u>
Phantom	<u>Validation plane</u>
Device Position	<u>Dipole</u>
Band	<u>CW1800</u>
Channels	<u>Middle</u>
Signal	<u>CW (Crest factor: 1.0)</u>

B. SAR Measurement Results

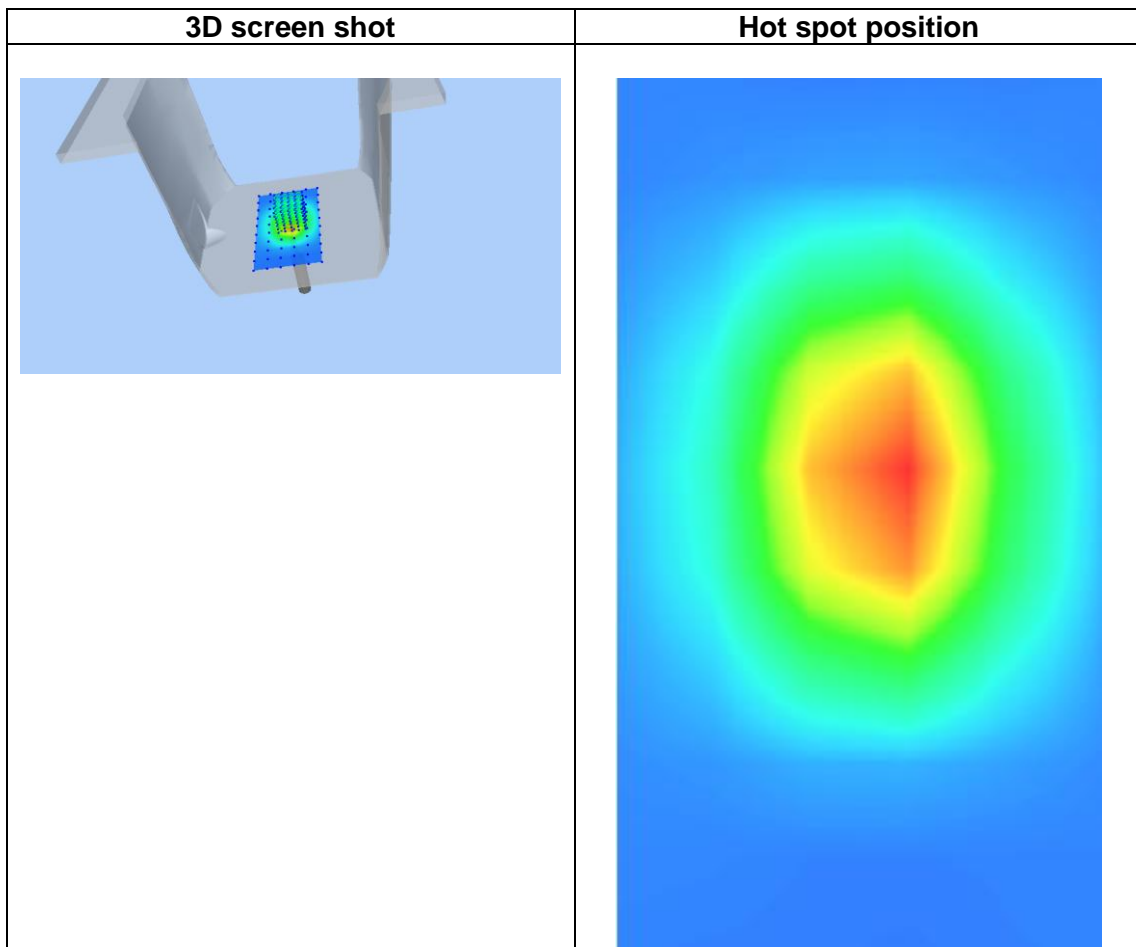
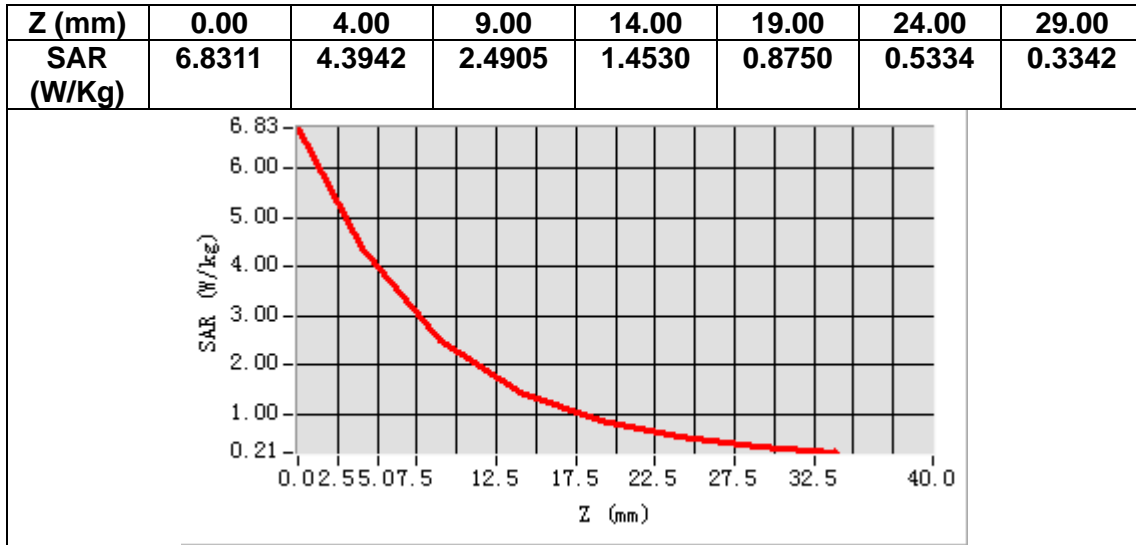
Frequency (MHz)	1800.000000
Relative permittivity (real part)	53.801621
Relative permittivity (imaginary part)	15.243432
Conductivity (S/m)	1.521324
Variation (%)	-0.510000



Maximum location: X=3.00, Y=2.00

SAR Peak: 6.91 W/kg

SAR 10g (W/Kg)	2.100162
SAR 1g (W/Kg)	4.011214



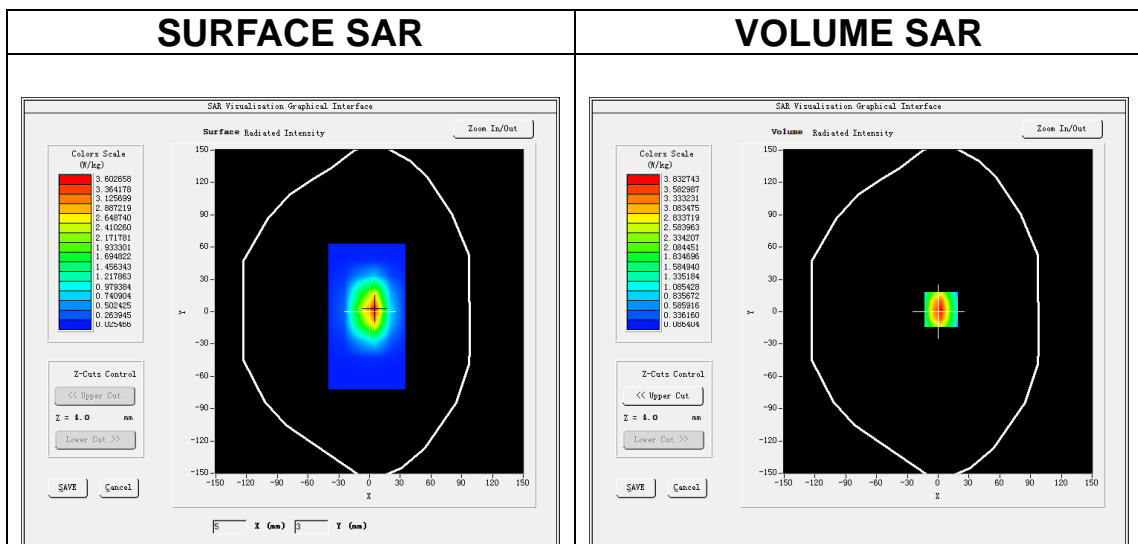
MEASUREMENT 5

A. Experimental conditions.

Area Scan	<u>dx=15mm dy=15mm, h= 5.00 mm</u>
ZoomScan	<u>5x5x7,dx=8mm dy=8mm dz=5mm</u>
Phantom	<u>Validation plane</u>
Device Position	<u>Dipole</u>
Band	<u>CW1900</u>
Channels	<u>Middle</u>
Signal	<u>CW (Crest factor: 1.0)</u>

B. SAR Measurement Results

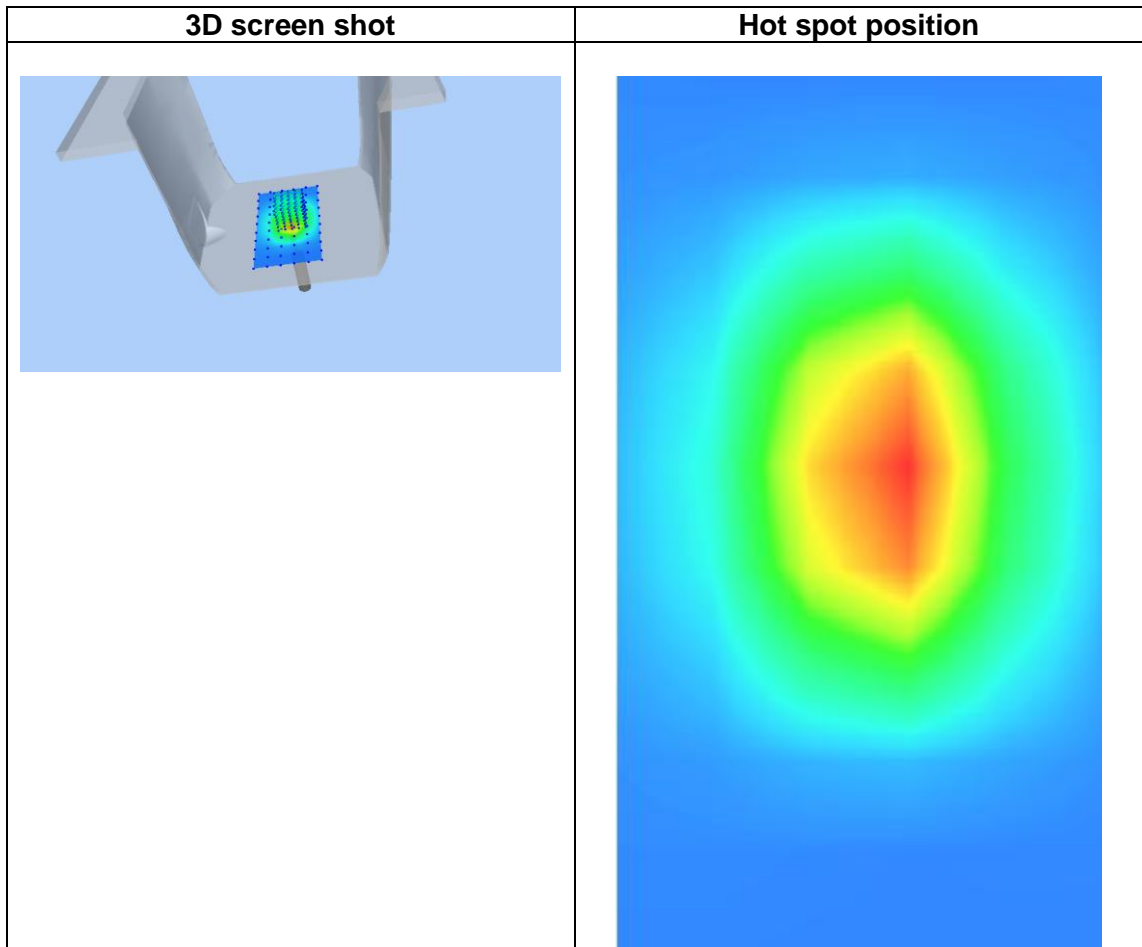
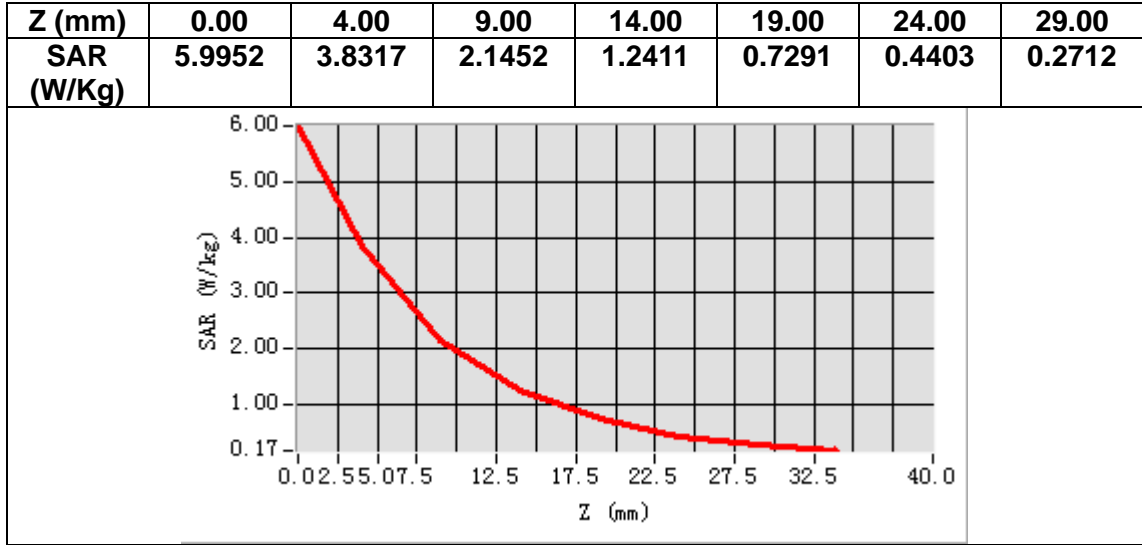
Frequency (MHz)	1900.000000
Relative permittivity (real part)	40.012892
Relative permittivity (imaginary part)	13.340302
Conductivity (S/m)	1.412587
Variation (%)	-0.460000



Maximum location: X=3.00, Y=2.00

SAR Peak: 6.03 W/kg

SAR 10g (W/Kg)	1.914262
SAR 1g (W/Kg)	3.705202



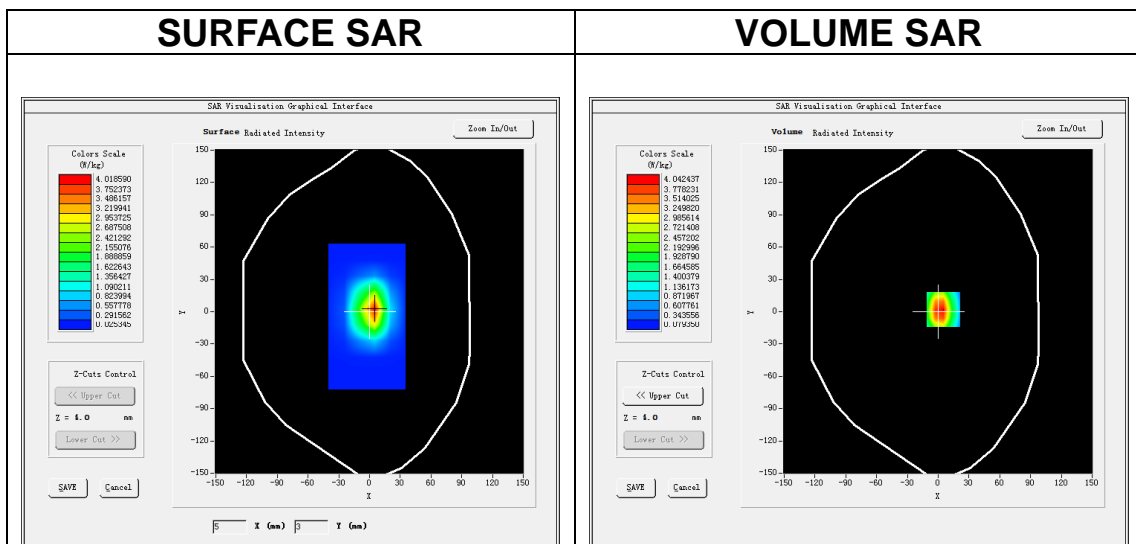
MEASUREMENT 6

A. Experimental conditions.

Area Scan	<u>dx=15mm dy=15mm, h= 5.00 mm</u>
ZoomScan	<u>5x5x7,dx=8mm dy=8mm dz=5mm</u>
Phantom	<u>Validation plane</u>
Device Position	<u>Dipole</u>
Band	<u>CW1900</u>
Channels	<u>Middle</u>
Signal	<u>CW (Crest factor: 1.0)</u>

B. SAR Measurement Results

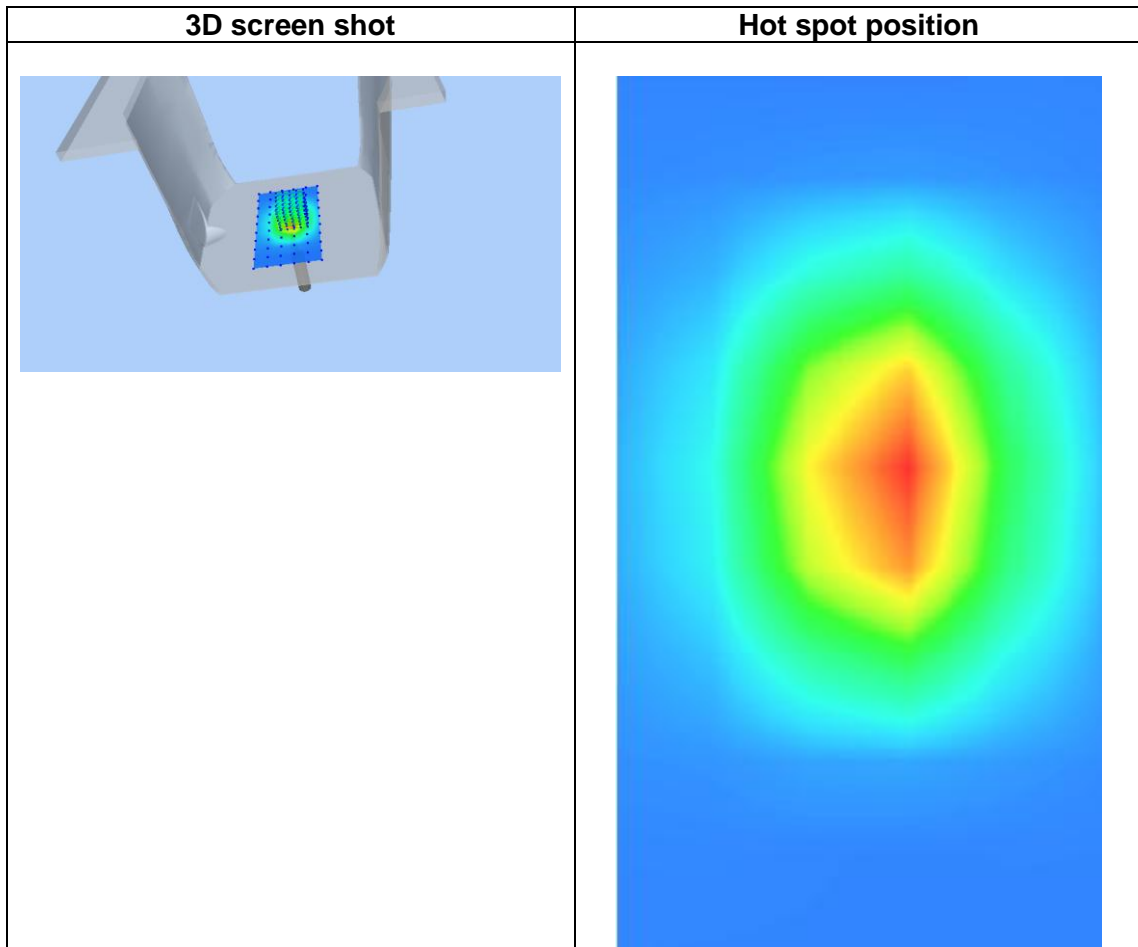
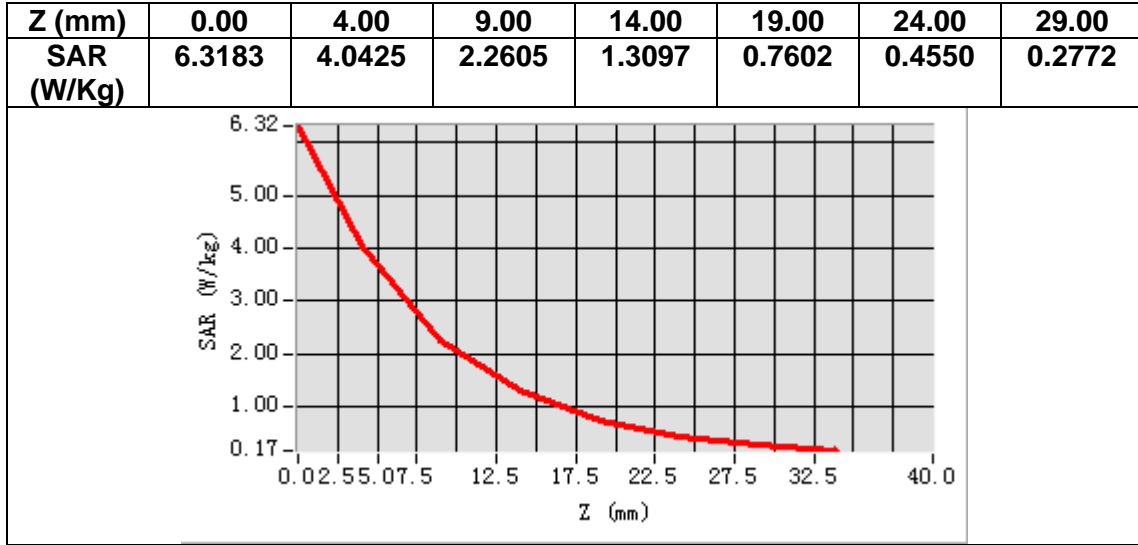
Frequency (MHz)	1900.000000
Relative permittivity (real part)	53.182829
Relative permittivity (imaginary part)	14.590301
Conductivity (S/m)	1.540587
Variation (%)	-0.150000



Maximum location: X=5.00, Y=2.00

SAR Peak: 6.70 W/kg

SAR 10g (W/Kg)	2.045028
SAR 1g (W/Kg)	4.060162



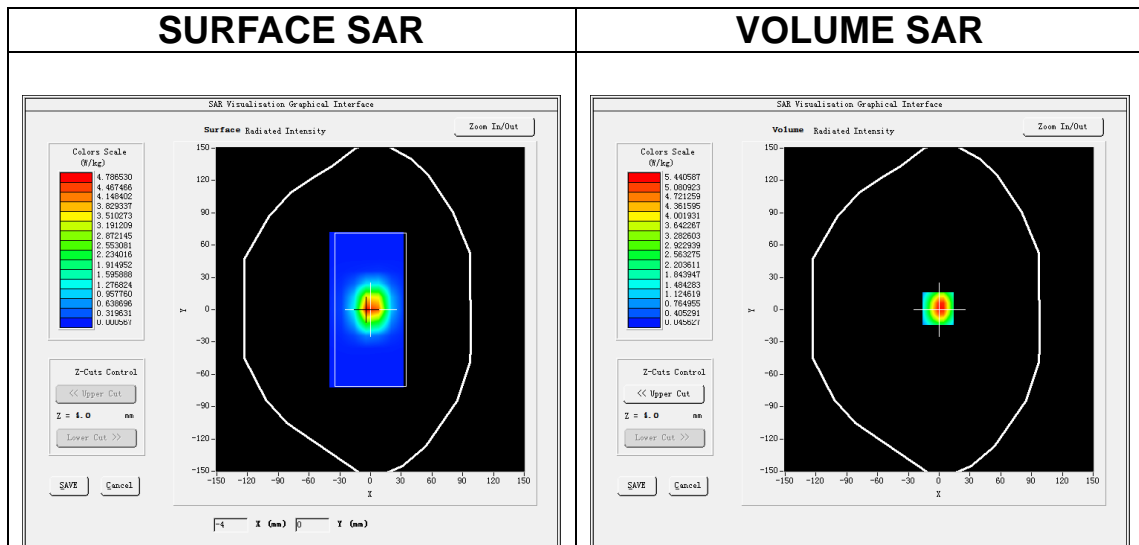
MEASUREMENT 7

A. Experimental conditions.

Area Scan	<u>dx=12mm dy=12mm, h= 5.00 mm</u>
ZoomScan	<u>7x7x7,dx=5mm dy=5mm dz=5mm</u>
Phantom	<u>Validation plane</u>
Device Position	<u>Dipole</u>
Band	<u>CW2450</u>
Channels	<u>Middle</u>
Signal	<u>CW (Crest factor: 1.0)</u>

B. SAR Measurement Results

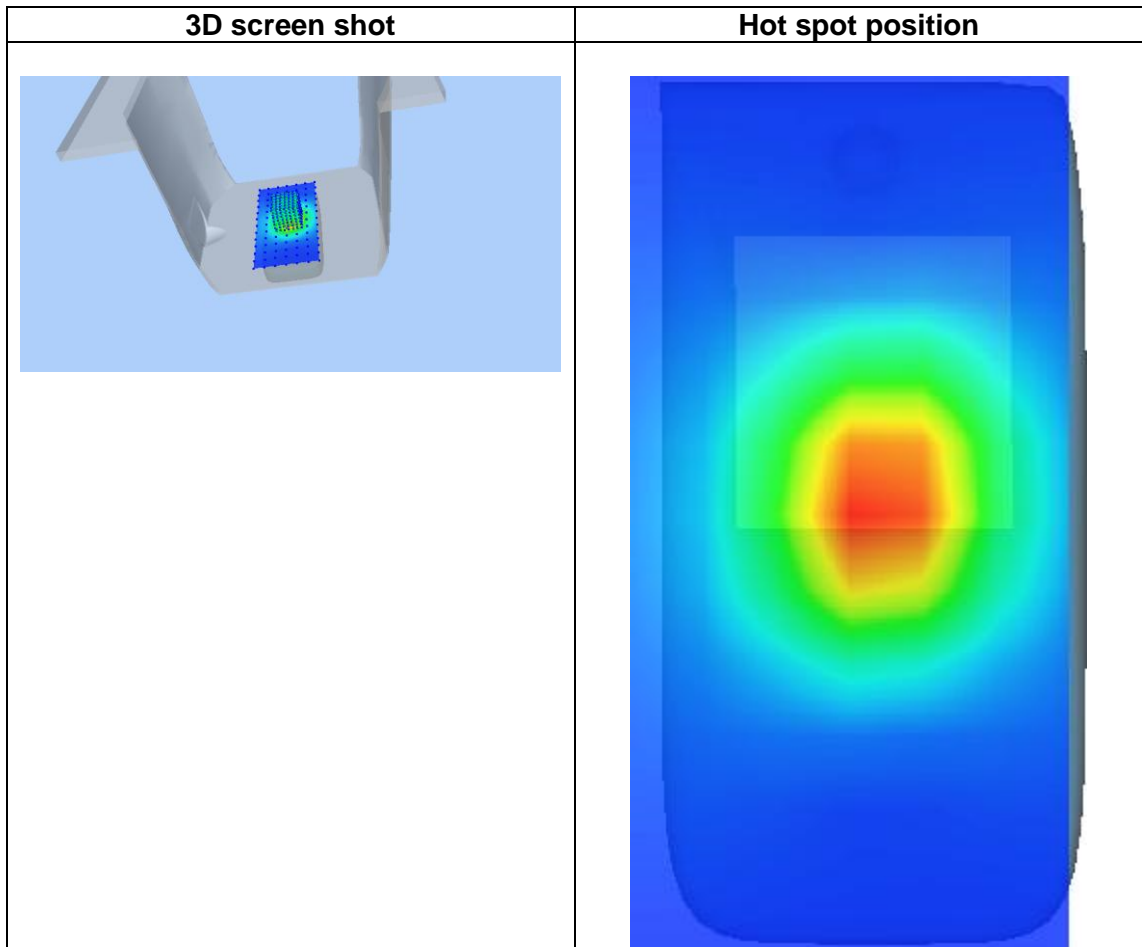
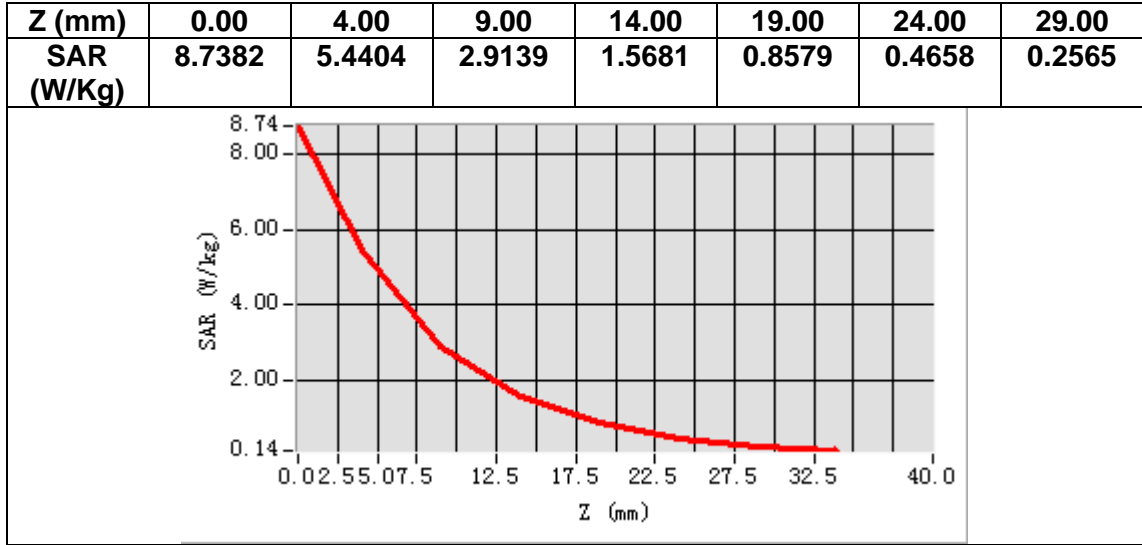
Frequency (MHz)	2450.000000
Relative permittivity (real part)	39.994057
Relative permittivity (imaginary part)	13.130233
Conductivity (S/m)	1.792738
Variation (%)	-0.220000



Maximum location: X=-1.00, Y=1.00

SAR Peak: 8.94 W/kg

SAR 10g (W/Kg)	2.478381
SAR 1g (W/Kg)	5.156682



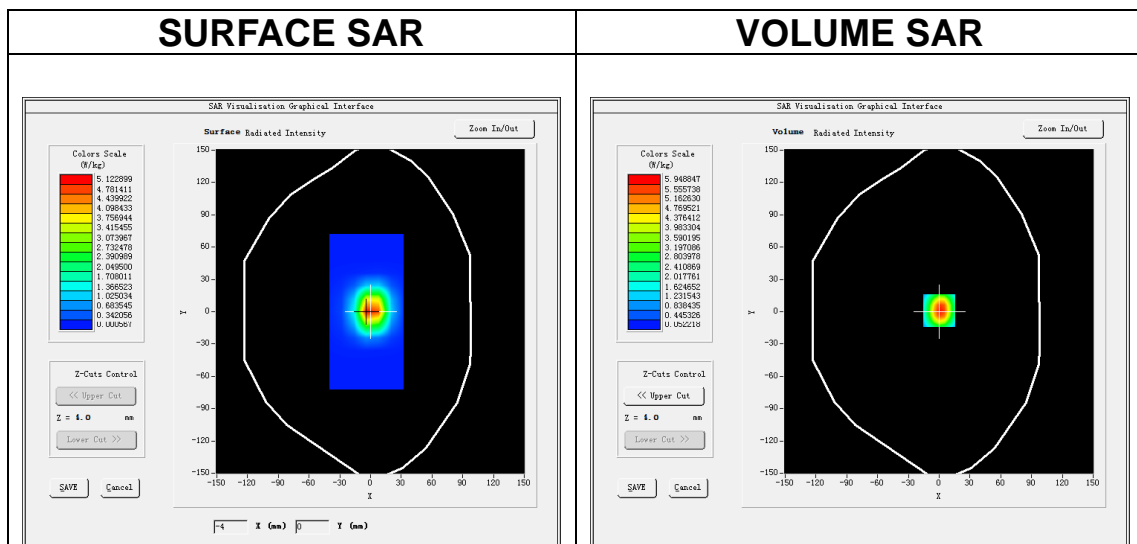
MEASUREMENT 8

A. Experimental conditions.

Area Scan	<u>dx=12mm dy=12mm, h= 5.00 mm</u>
ZoomScan	<u>7x7x7,dx=5mm dy=5mm dz=5mm</u>
Phantom	<u>Validation plane</u>
Device Position	<u>Dipole</u>
Band	<u>CW2450</u>
Channels	<u>Middle</u>
Signal	<u>CW (Crest factor: 1.0)</u>

B. SAR Measurement Results

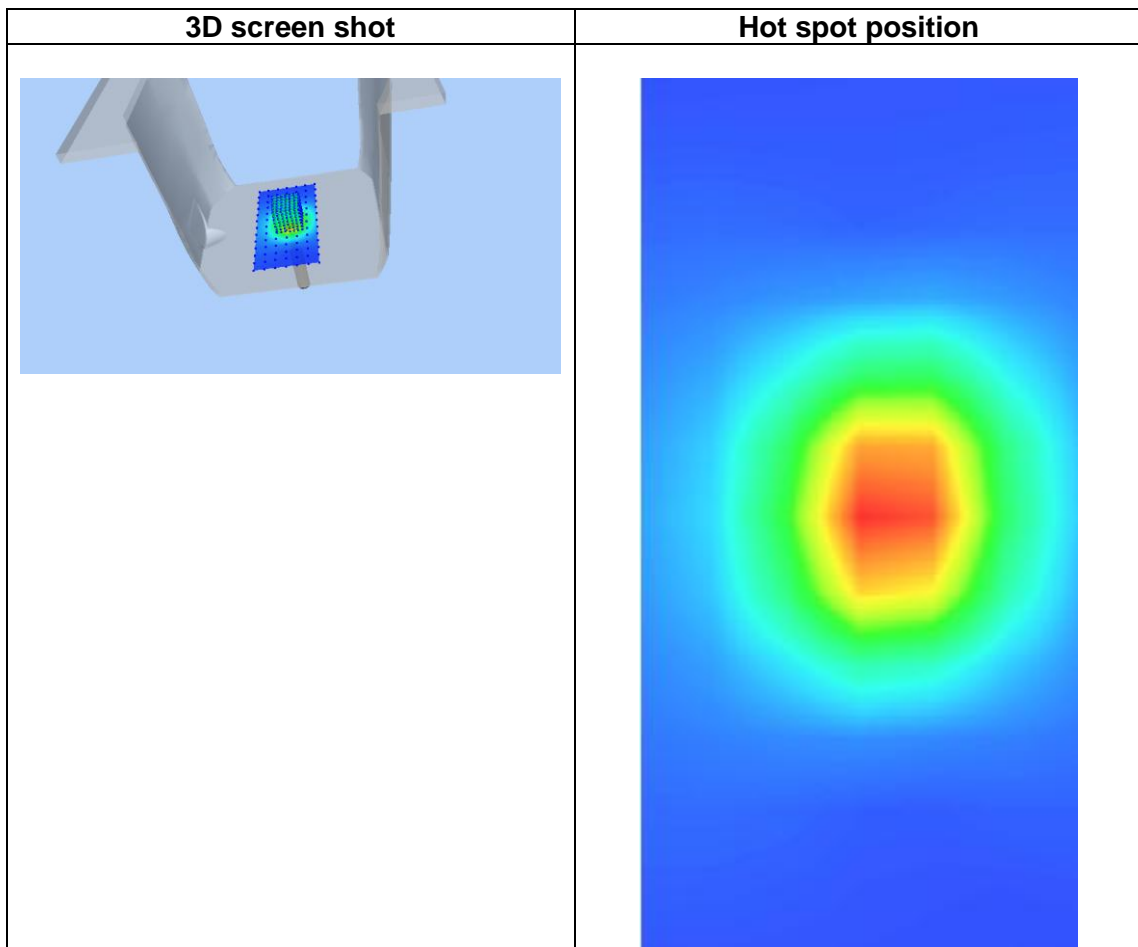
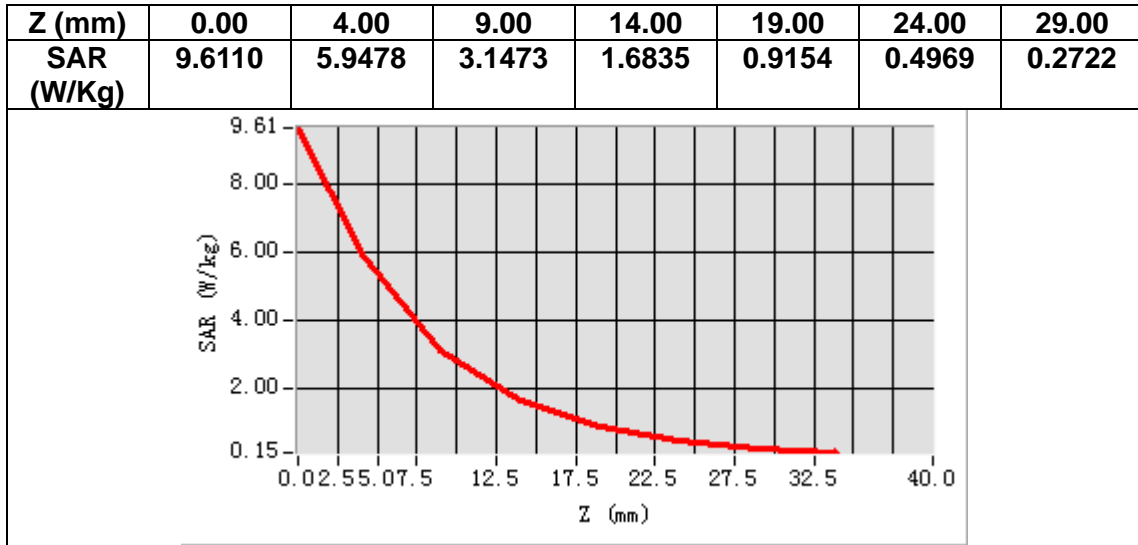
Frequency (MHz)	2450.000000
Relative permittivity (real part)	52.704027
Relative permittivity (imaginary part)	14.490233
Conductivity (S/m)	1.972738
Variation (%)	-0.200000



Maximum location: X=0.00, Y=1.00

SAR Peak: 9.64 W/kg

SAR 10g (W/Kg)	2.416498
SAR 1g (W/Kg)	5.027090



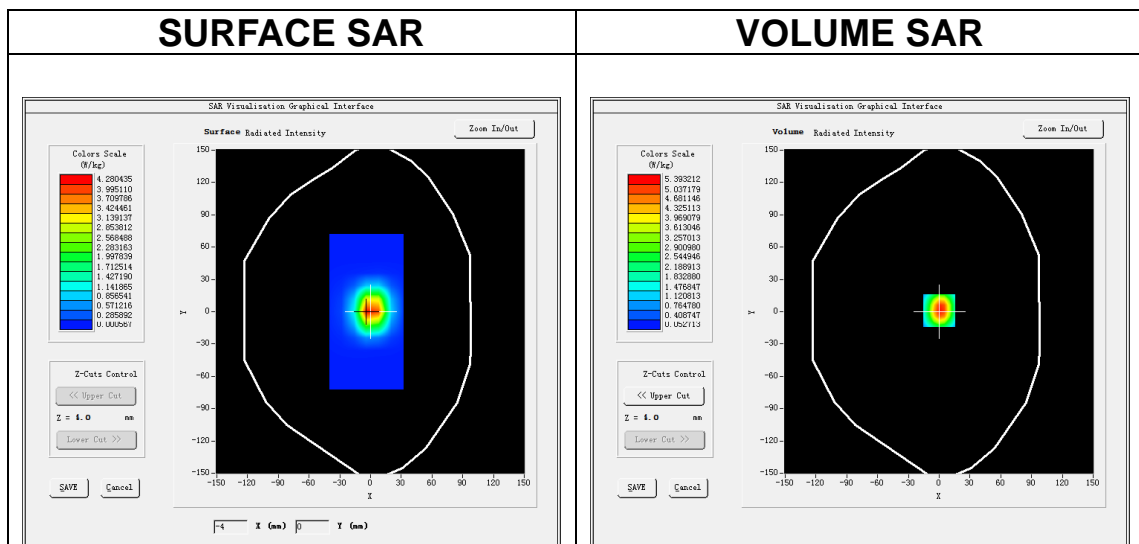
MEASUREMENT 9

A. Experimental conditions.

Area Scan	<u>dx=12mm dy=12mm, h= 5.00 mm</u>
ZoomScan	<u>7x7x7,dx=5mm dy=5mm dz=5mm</u>
Phantom	<u>Validation plane</u>
Device Position	<u>Dipole</u>
Band	<u>CW2600</u>
Channels	<u>Middle</u>
Signal	<u>CW (Crest factor: 1.0)</u>

B. SAR Measurement Results

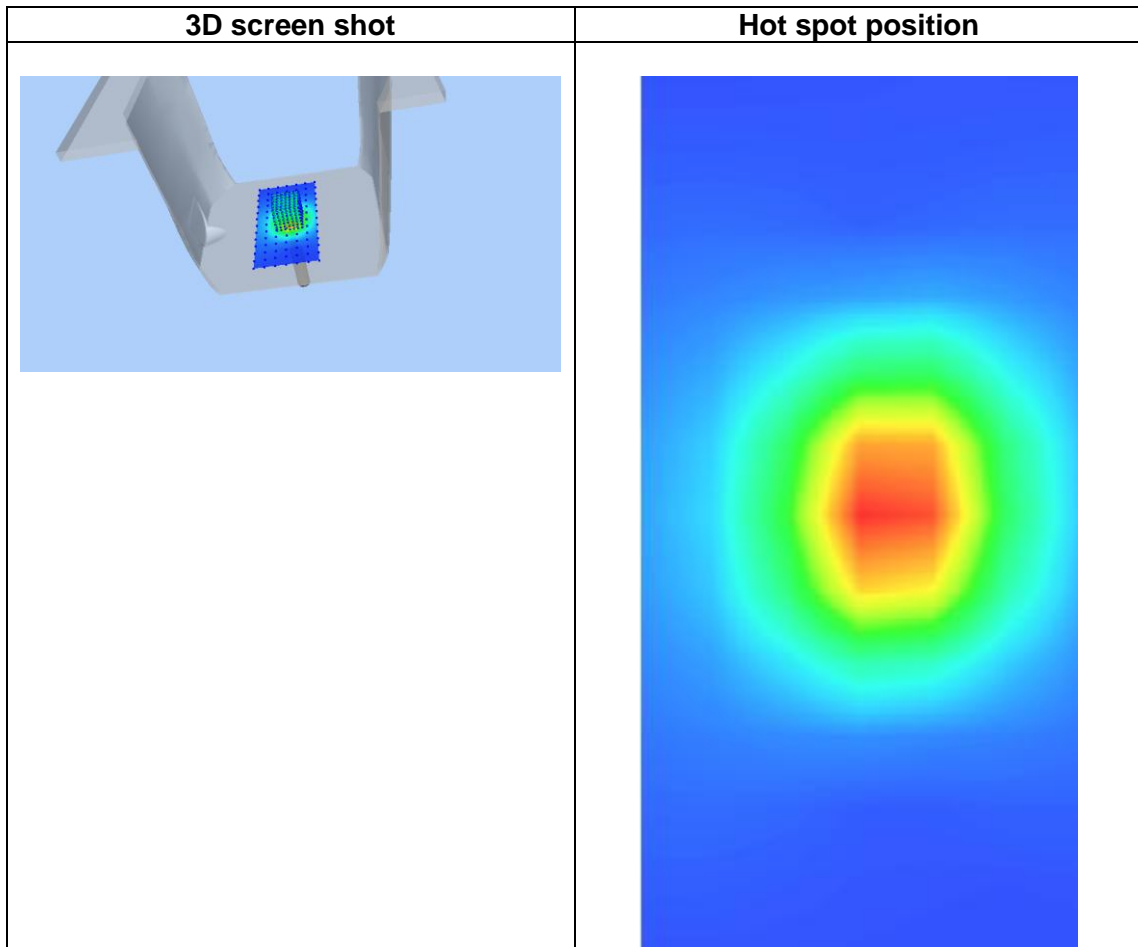
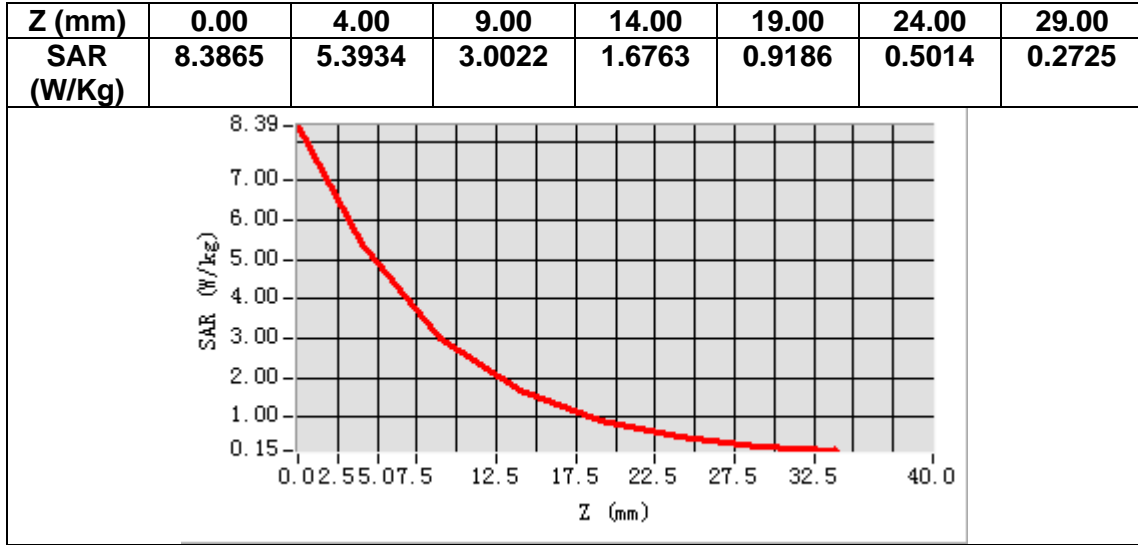
Frequency (MHz)	2600.000000
Relative permittivity (real part)	39.024017
Relative permittivity (imaginary part)	13.590833
Conductivity (S/m)	1.962738
Variation (%)	0.700000



Maximum location: X=0.00, Y=1.00

SAR Peak: 8.52 W/kg

SAR 10g (W/Kg)	2.573473
SAR 1g (W/Kg)	5.013435



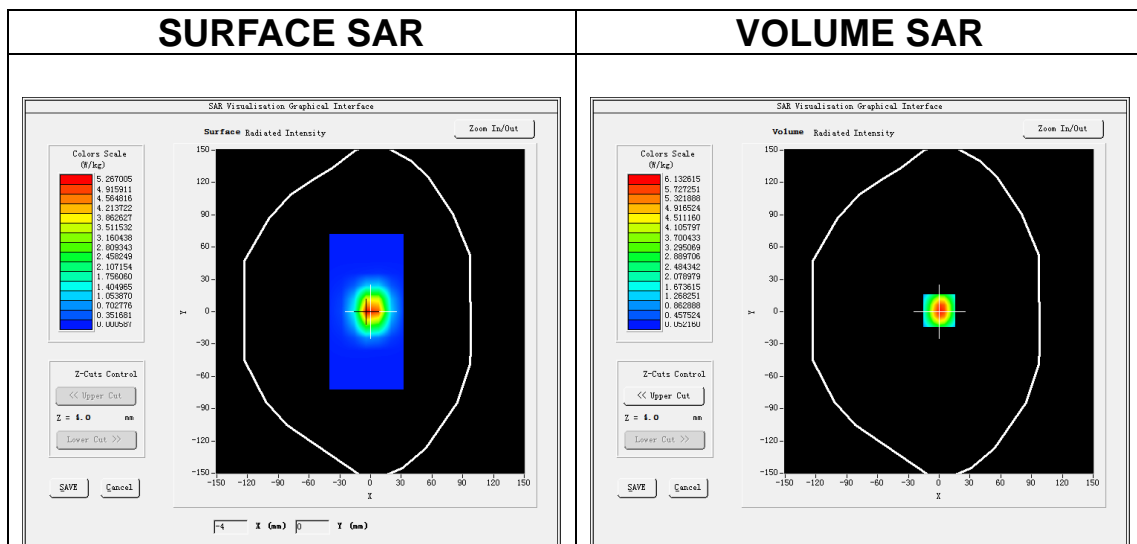
MEASUREMENT 10

A. Experimental conditions.

Area Scan	<u>dx=12mm dy=12mm, h= 5.00 mm</u>
ZoomScan	<u>7x7x7,dx=5mm dy=5mm dz=5mm</u>
Phantom	<u>Validation plane</u>
Device Position	<u>Dipole</u>
Band	<u>CW2600</u>
Channels	<u>Middle</u>
Signal	<u>CW (Crest factor: 1.0)</u>

B. SAR Measurement Results

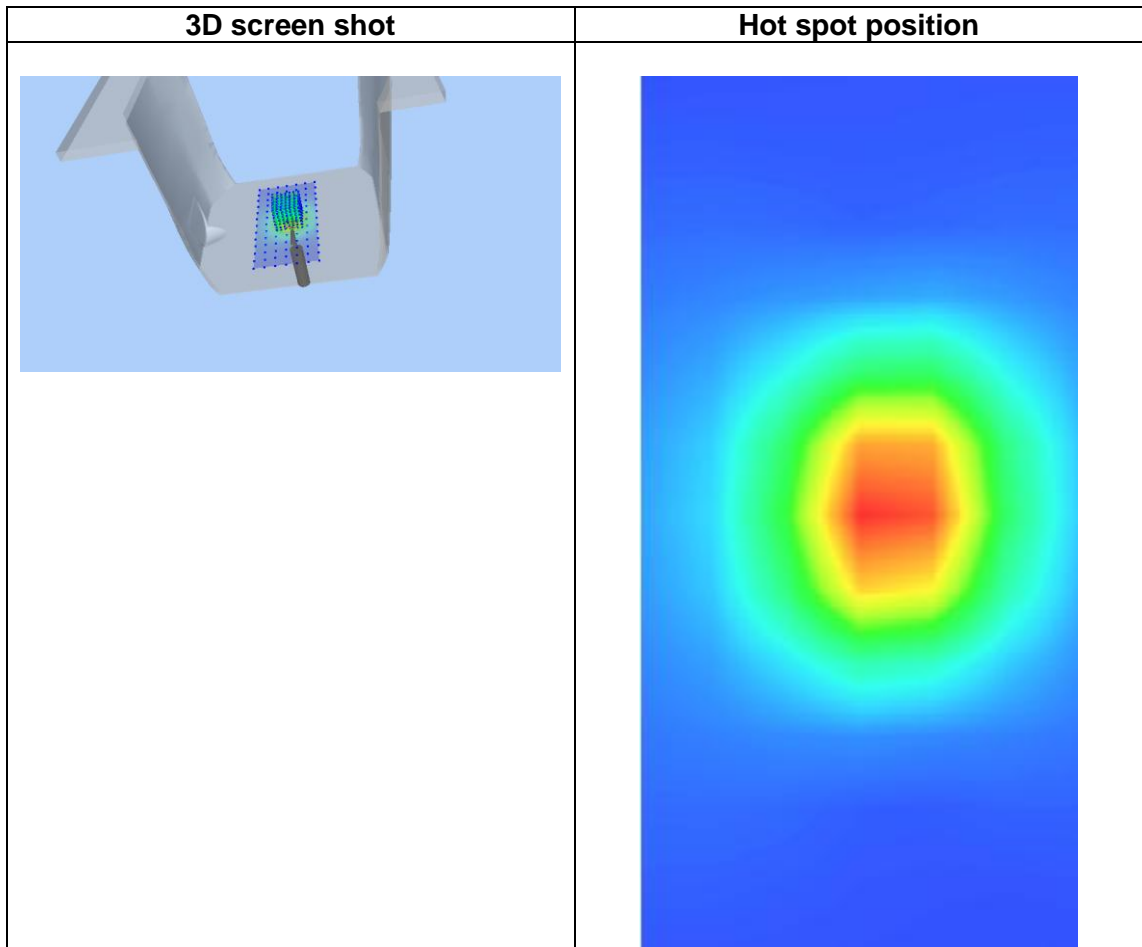
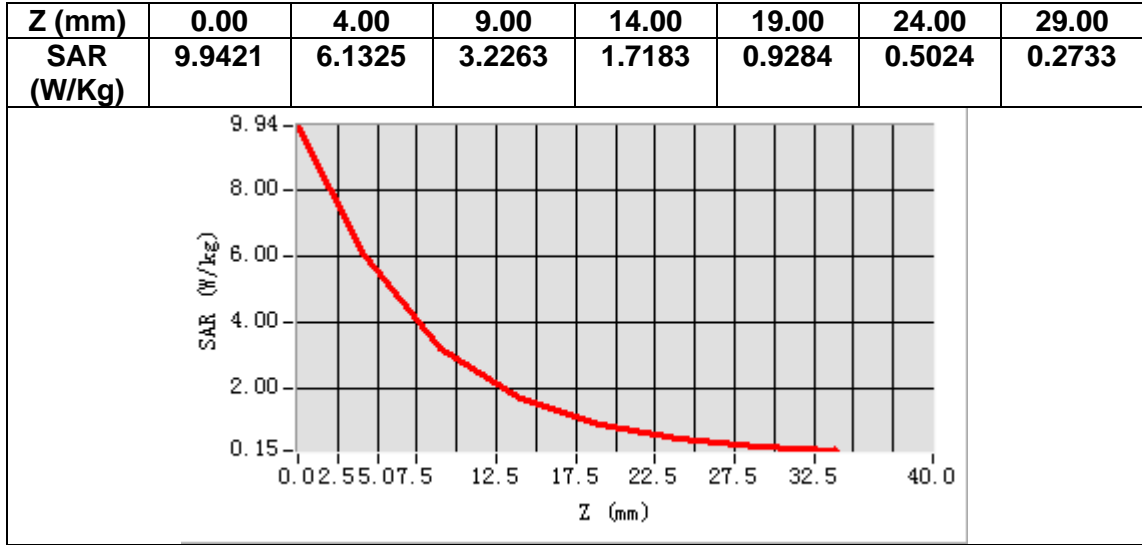
Frequency (MHz)	2600.000000
Relative permittivity (real part)	53.084067
Relative permittivity (imaginary part)	14.970233
Conductivity (S/m)	2.163730
Variation (%)	0.270000



Maximum location: X=0.00, Y=1.00

SAR Peak: 9.97 W/kg

SAR 10g (W/Kg)	2.412422
SAR 1g (W/Kg)	5.541430



13. Appendix C. Plots of High SAR Measurement

Table of contents
MEASUREMENT 1 GSM 850 Head
MEASUREMENT 2 GSM 850 Body
MEASUREMENT 3 GSM 1900 Head
MEASUREMENT 4 GSM 1900 Body
MEASUREMENT 5 WCDMA Band II Head
MEASUREMENT 6 WCDMA Band II Body
MEASUREMENT 7 WCDMA Band V Head
MEASUREMENT 8 WCDMA Band V Body
MEASUREMENT 9 WLAN 2.4G Head
MEASUREMENT 10 WLAN 2.4G Body
MEASUREMENT 11 LTE Band II Head
MEASUREMENT 12 LTE Band II Body
MEASUREMENT 13 LTE Band IV Head
MEASUREMENT 14 LTE Band IV Body
MEASUREMENT 15 LTE Band V Head
MEASUREMENT 16 LTE Band V Body
MEASUREMENT 17 LTE Band VII Head
MEASUREMENT 18 LTE Band VII Body

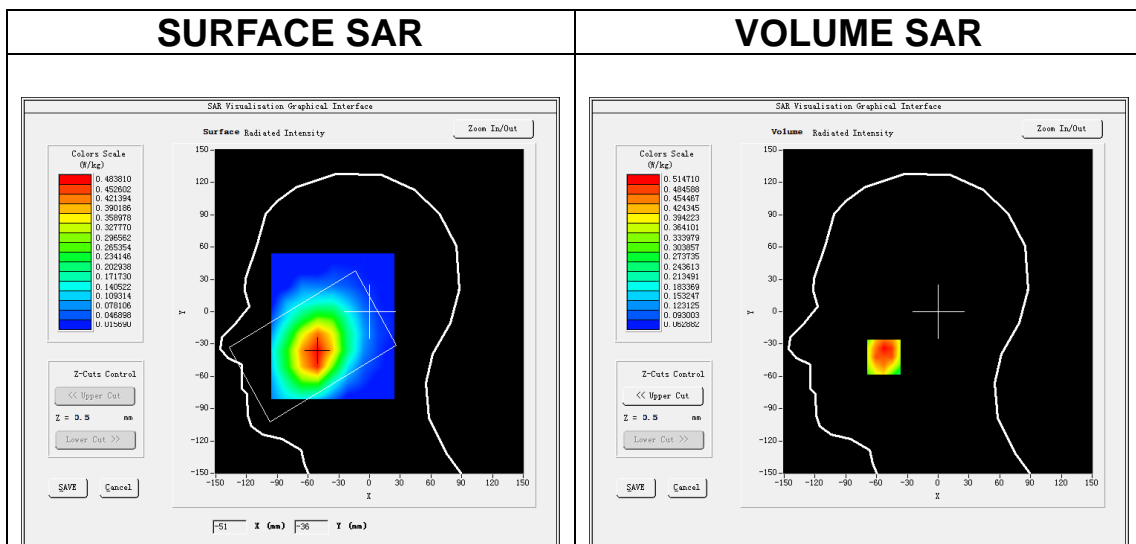
MEASUREMENT 1

A. Experimental conditions.

Area Scan	<u>dx=15mm dy=15mm, h= 5.00 mm</u>
ZoomScan	<u>5x5x7,dx=8mm dy=8mm dz=5mm</u>
Phantom	<u>Left head</u>
Device Position	<u>Cheek</u>
Band	<u>GSM850</u>
Channels	<u>Middle</u>
Signal	<u>TDMA (Crest factor: 2.0)</u>

B. SAR Measurement Results

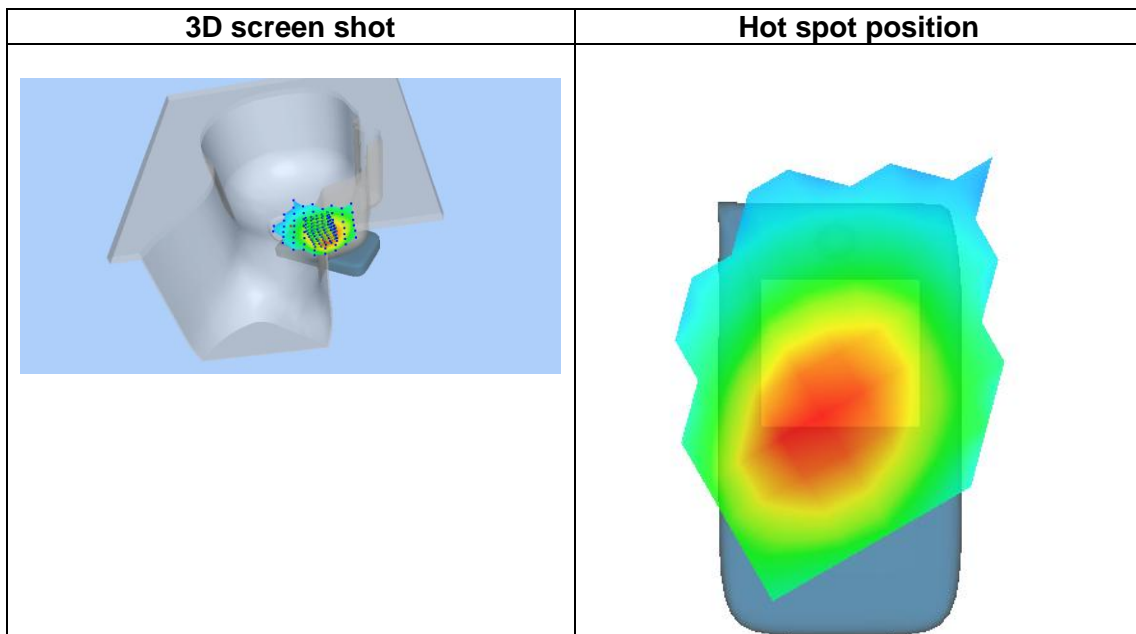
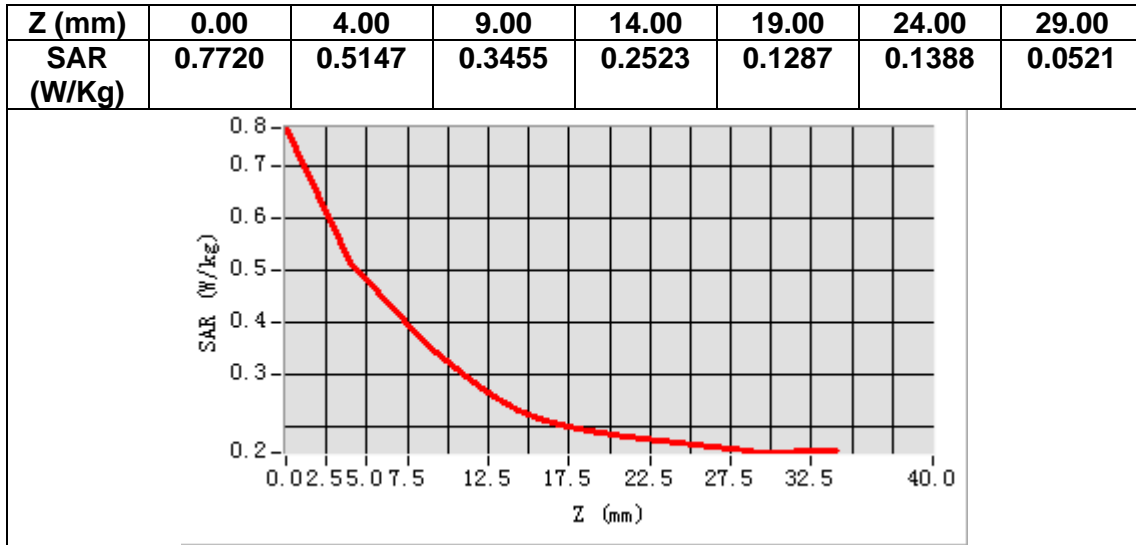
Frequency (MHz)	836.400000
Relative permittivity (real part)	41.530960
Relative permittivity (imaginary part)	19.511539
Conductivity (S/m)	0.906636
Variation (%)	3.770000



Maximum location: X=-53.00, Y=-42.00

SAR Peak: 0.66 W/kg

SAR 10g (W/Kg)	0.373008
SAR 1g (W/Kg)	0.500203



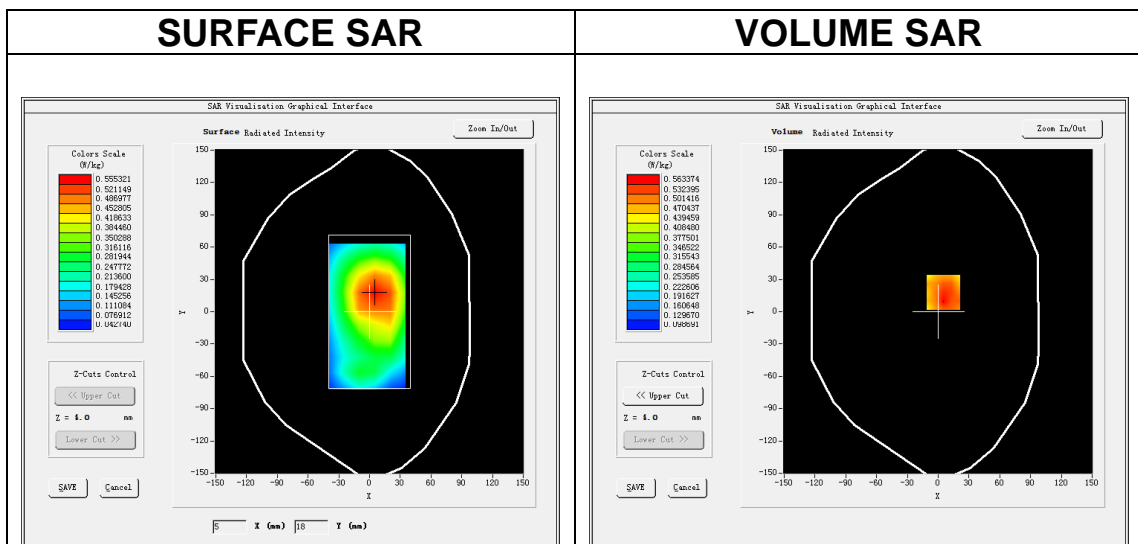
MEASUREMENT 2

A. Experimental conditions.

Area Scan	<u>dx=15mm dy=15mm, h= 5.00 mm</u>
ZoomScan	<u>5x5x7,dx=8mm dy=8mm dz=5mm</u>
Phantom	<u>Validation plane</u>
Device Position	<u>Body</u>
Band	<u>GSM850</u>
Channels	<u>Middle</u>
Signal	<u>TDMA (Crest factor: 2.0)</u>

B. SAR Measurement Results

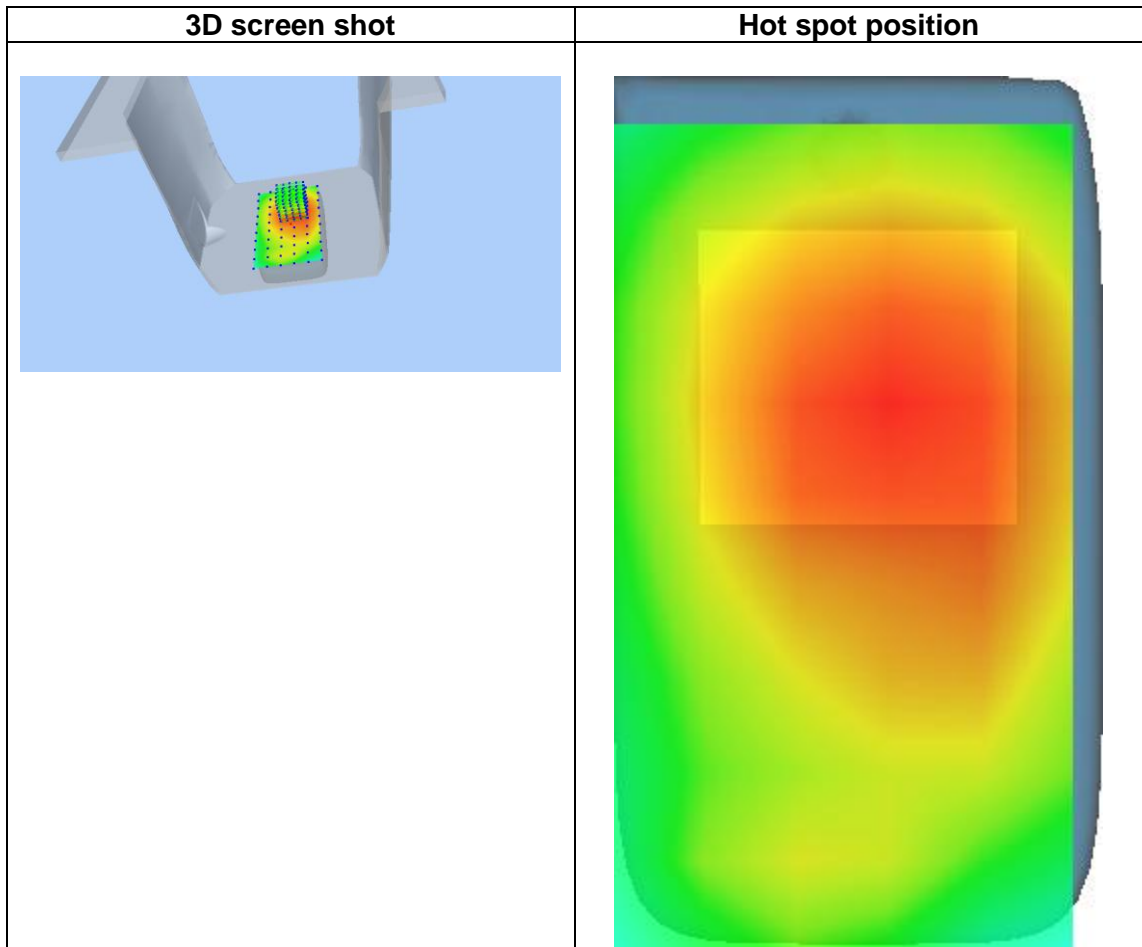
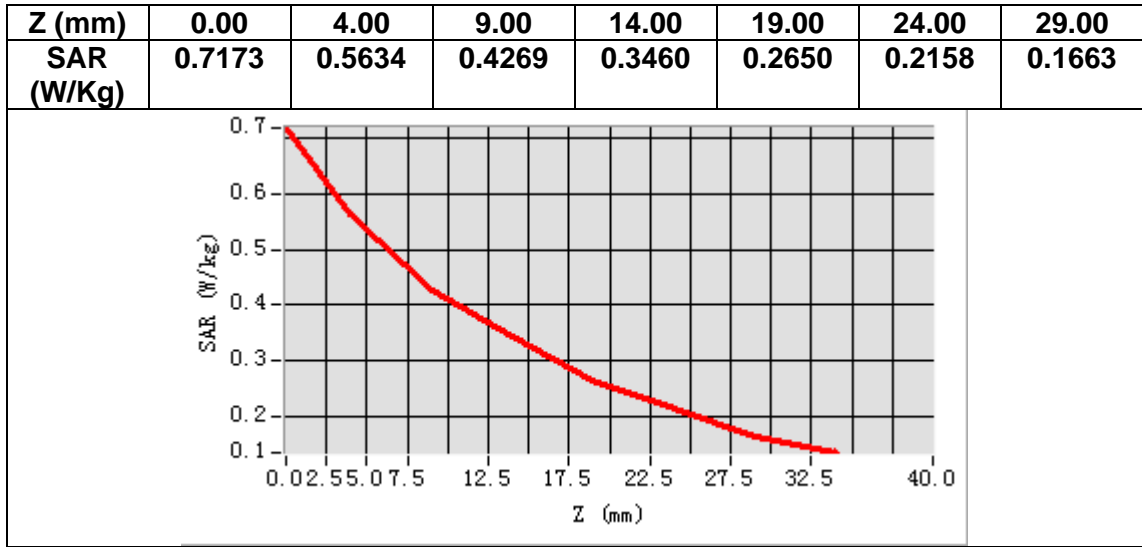
Frequency (MHz)	836.400000
Relative permittivity (real part)	54.899578
Relative permittivity (imaginary part)	21.492741
Conductivity (S/m)	0.998696
Variation (%)	-1.540000



Maximum location: X=5.00, Y=18.00

SAR Peak: 0.72 W/kg

SAR 10g (W/Kg)	0.407679
SAR 1g (W/Kg)	0.553569



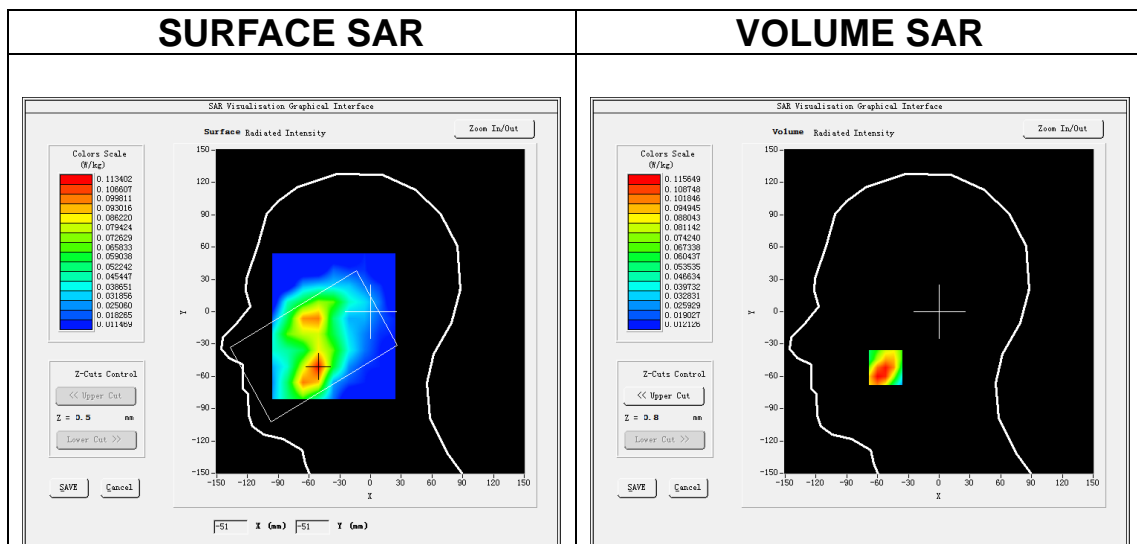
MEASUREMENT 3

A. Experimental conditions.

Area Scan	<u>dx=15mm dy=15mm, h= 5.00 mm</u>
ZoomScan	<u>5x5x7,dx=8mm dy=8mm dz=5mm</u>
Phantom	<u>Left head</u>
Device Position	<u>Cheek</u>
Band	<u>GSM1900</u>
Channels	<u>Middle</u>
Signal	<u>TDMA (Crest factor: 2.0)</u>

B. SAR Measurement Results

Frequency (MHz)	1880.000000
Relative permittivity (real part)	40.080399
Relative permittivity (imaginary part)	13.387800
Conductivity (S/m)	1.398281
Variation (%)	-4.710000



Maximum location: X=-52.00, Y=-52.00

SAR Peak: 0.17 W/kg

SAR 10g (W/Kg)	0.070346
SAR 1g (W/Kg)	0.113697