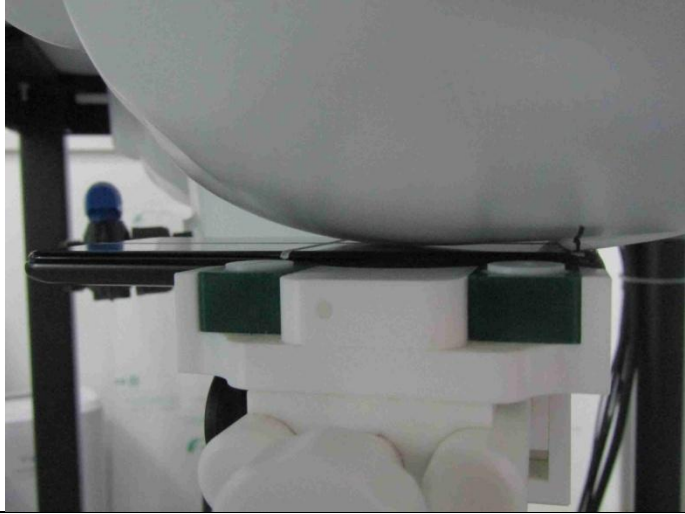
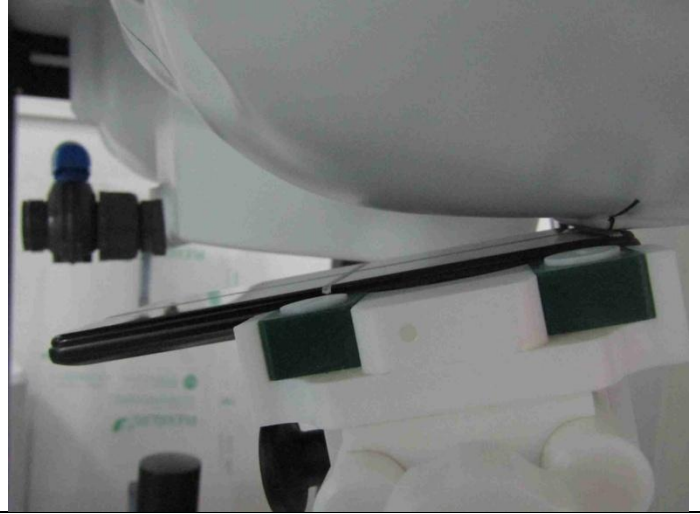


Test Positions

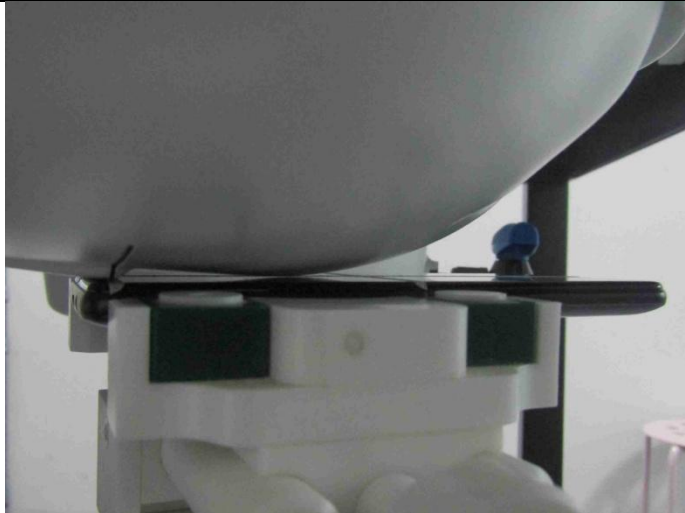
Left Cheek



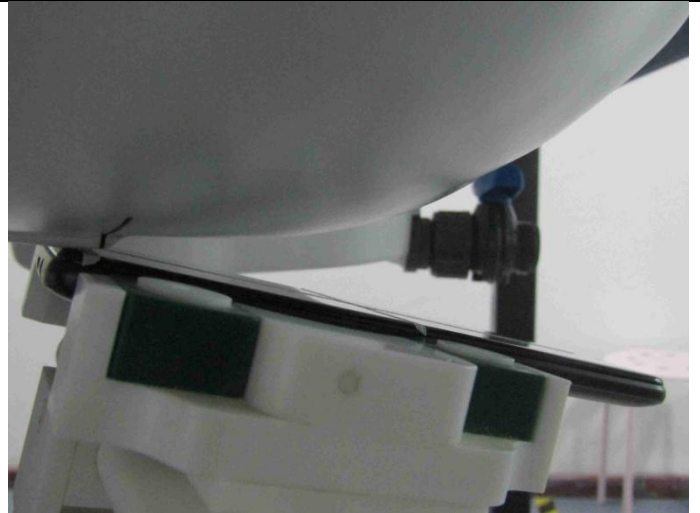
Left Tilt 15 Degree



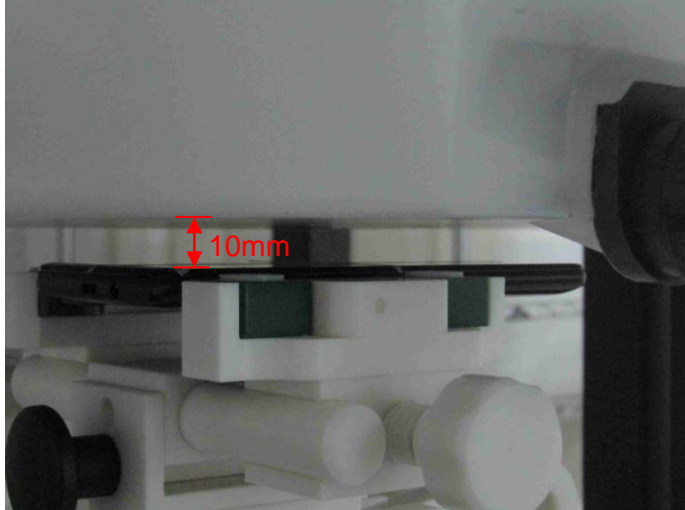
Right Cheek



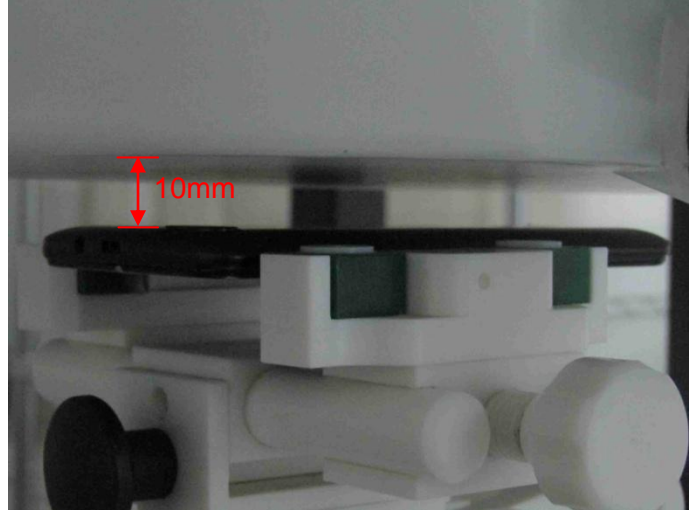
Right Tilt 15 Degree



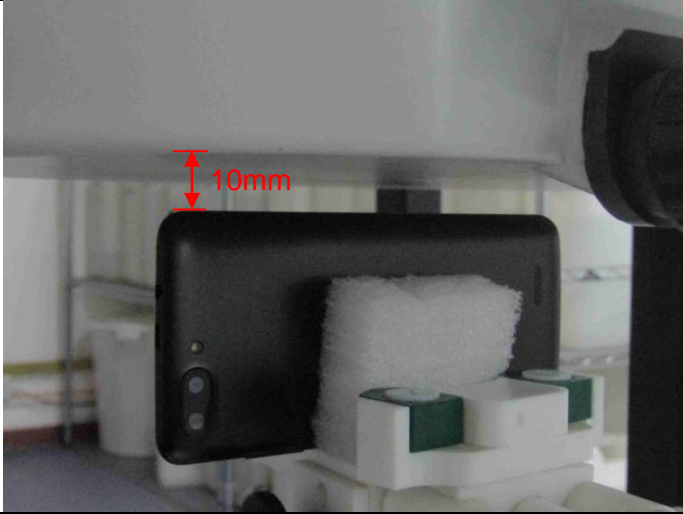
Front Side  
(Separation distance of 10mm)



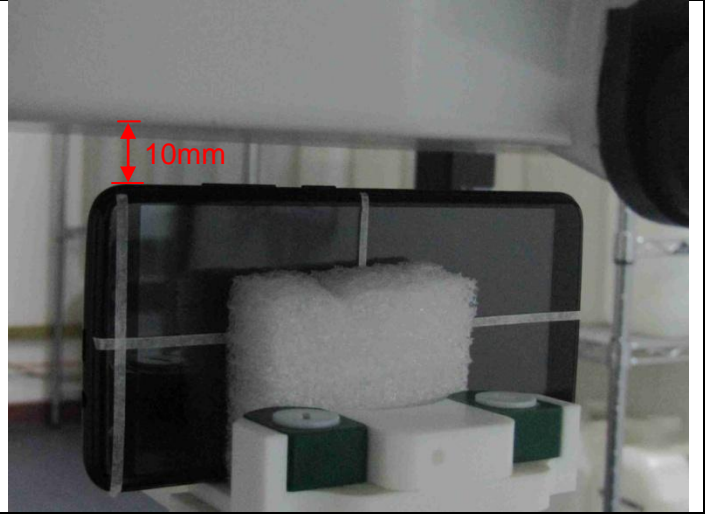
Back Side  
(Separation distance of 10mm)



Left Side  
(Separation distance of 10mm)



Right Side  
(Separation distance of 10mm)



Top Side  
(Separation distance of 10mm)



Bottom Side  
(Separation distance of 10mm)



## Liquid depth

Head 850MHz depth (15.1cm)



Body 850MHz depth (15.3cm)



Head 1800MHz depth (15.2cm)

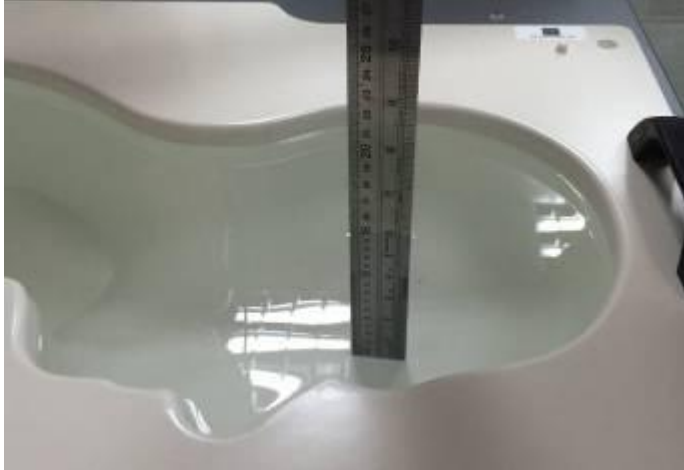


Body 1800MHz depth (15.1cm)



Head 1900MHz depth (15.2cm)

Body 1900MHz depth (15.3cm)



Head 2450MHz depth (15.1cm)

Body 2450MHz depth (15.2cm)



Head 2600MHz depth (15.2cm)

Body 2600MHz depth (15.3cm)

