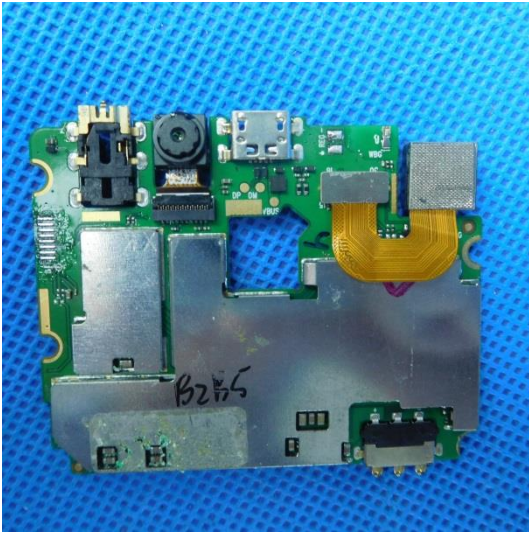
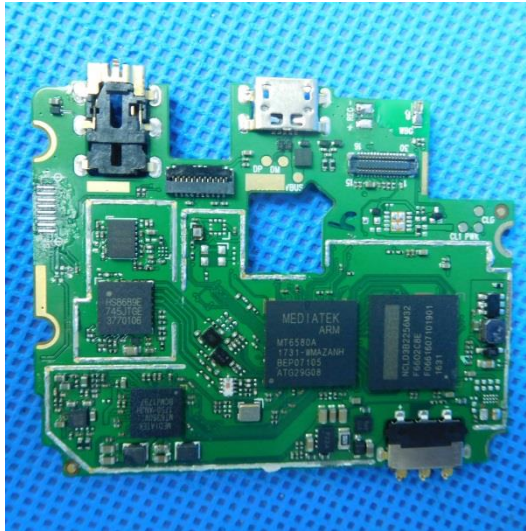


Model: AX926

### Internal photos of the EUT







⊖ ⊕

Li-ion Battery

---

**Model: GM55J1**  
Voltage: DC3.7V Capacity: 2500mAh  
9.25Wh

**CAUTION**

MAY EXPLODE IF DAMAGED OR DISPOSED OF IN FIRE  
DO NOT SHORT-CIRCUIT  
DO NOT DISASSEMBLE WITHOUT AUTHORIZATION  
USE SPECIFIED ADAPTER ONLY

CHARGING ENVIRONMENT  
TEMPERATURE: 0°C-50°C

Made In China

