

Test Laboratory: Huatongwei International Inspection Co., Ltd.,SAR Lab

Date: 9/17/2018

GSM 850-Head

Communication System: UID 0, Generic GPRS(TDMA, GMSK, TN 0-1-2) (0); Frequency: 836.6 MHz;Duty Cycle: 1:2.66993

Medium parameters used (interpolated): $f = 836.6$ MHz; $\sigma = 0.933$ S/m; $\epsilon_r = 43.899$; $\rho = 1000$ kg/m³

Phantom section: Left Section

Ambient Temperature:22.8°C;Liquid Temperature:22.4°C;

DASY Configuration:

- Probe: EX3DV4 - SN7494; ConvF(10.73, 10.73, 10.73) @ 836.6 MHz; Calibrated: 2/26/2018
- Sensor-Surface: 1.4mm (Mechanical Surface Detection)
- Electronics: DAE4 Sn1549; Calibrated: 4/25/2018
- Phantom: Twin-SAM V8.0 ; Type: QD 000 P41 AA; Serial: 1974
- DASY52 52.10.1(1476); SEMCAD X 14.6.11(7439)

Left Touch Cheek/CH 190/Area Scan (61x111x1): Interpolated grid: dx=1.500 mm, dy=1.500 mm

Maximum value of SAR (interpolated) = 0.294 W/kg

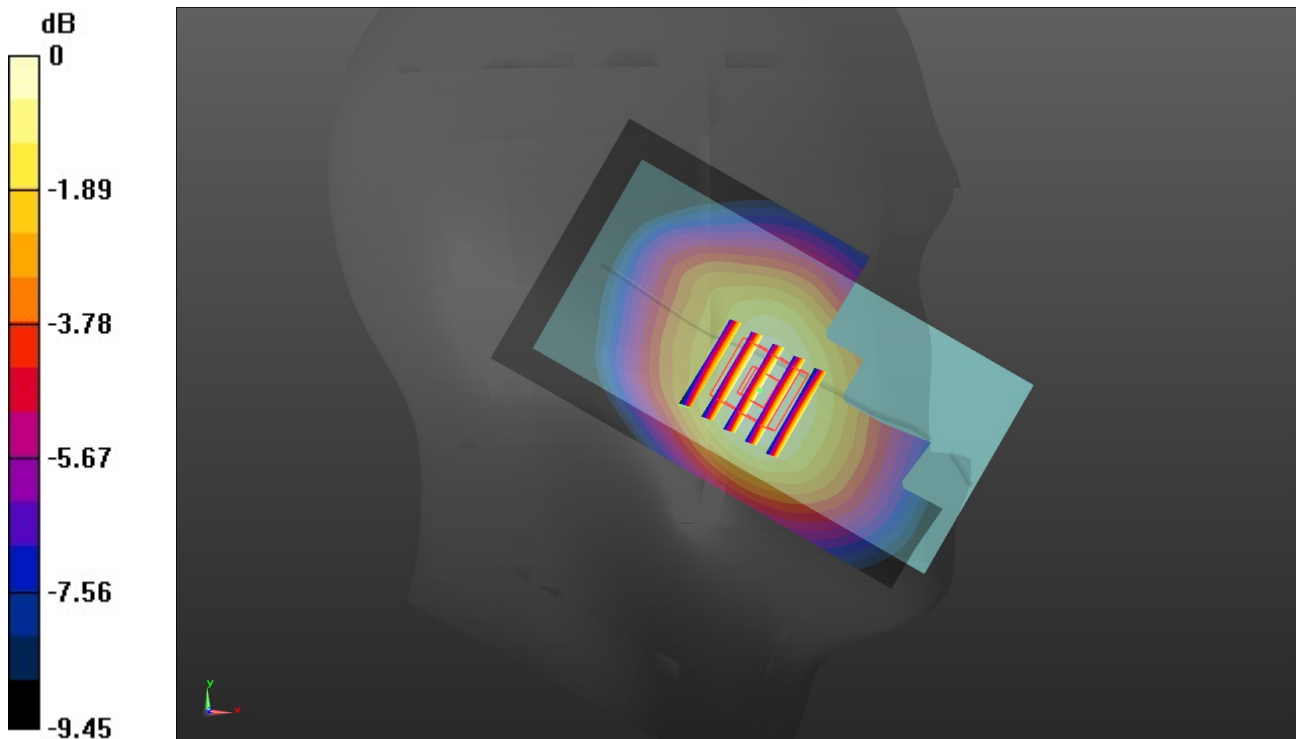
Left Touch Cheek/CH 190/Zoom Scan (5x5x7)/Cube 0: Measurement grid: dx=8mm, dy=8mm, dz=5mm

Reference Value = 5.807 V/m; Power Drift = -0.05 dB

Peak SAR (extrapolated) = 0.321 W/kg

SAR(1 g) = 0.240 W/kg; SAR(10 g) = 0.177 W/kg

Maximum value of SAR (measured) = 0.294 W/kg



0 dB = 0.294 W/kg = -5.32 dBW/kg

Test Laboratory: Huatongwei International Inspection Co., Ltd.,SAR Lab

Date: 9/18/2018

GSM 850-Body

Communication System: UID 0, Generic GPRS(TDMA, GMSK, TN 0-1-2) (0); Frequency: 836.6 MHz;Duty Cycle: 1:2.66993

Medium parameters used (interpolated): $f = 836.6$ MHz; $\sigma = 0.967$ S/m; $\epsilon_r = 55.399$; $\rho = 1000$ kg/m³

Phantom section: Flat Section

Ambient Temperature:22.7°C;Liquid Temperature:22.1°C;

DASY Configuration:

- Probe: EX3DV4 - SN7494; ConvF(10.5, 10.5, 10.5) @ 836.6 MHz; Calibrated: 2/26/2018
- Sensor-Surface: 1.4mm (Mechanical Surface Detection)
- Electronics: DAE4 Sn1549; Calibrated: 4/25/2018
- Phantom: ELI V8.0 ; Type: QD OVA 004 AA ; Serial: 2078
- DASY52 52.10.1(1476); SEMCAD X 14.6.11(7439)

Rear/CH 190/Area Scan (61x121x1): Interpolated grid: dx=1.500 mm, dy=1.500 mm
Maximum value of SAR (interpolated) = 0.471 W/kg

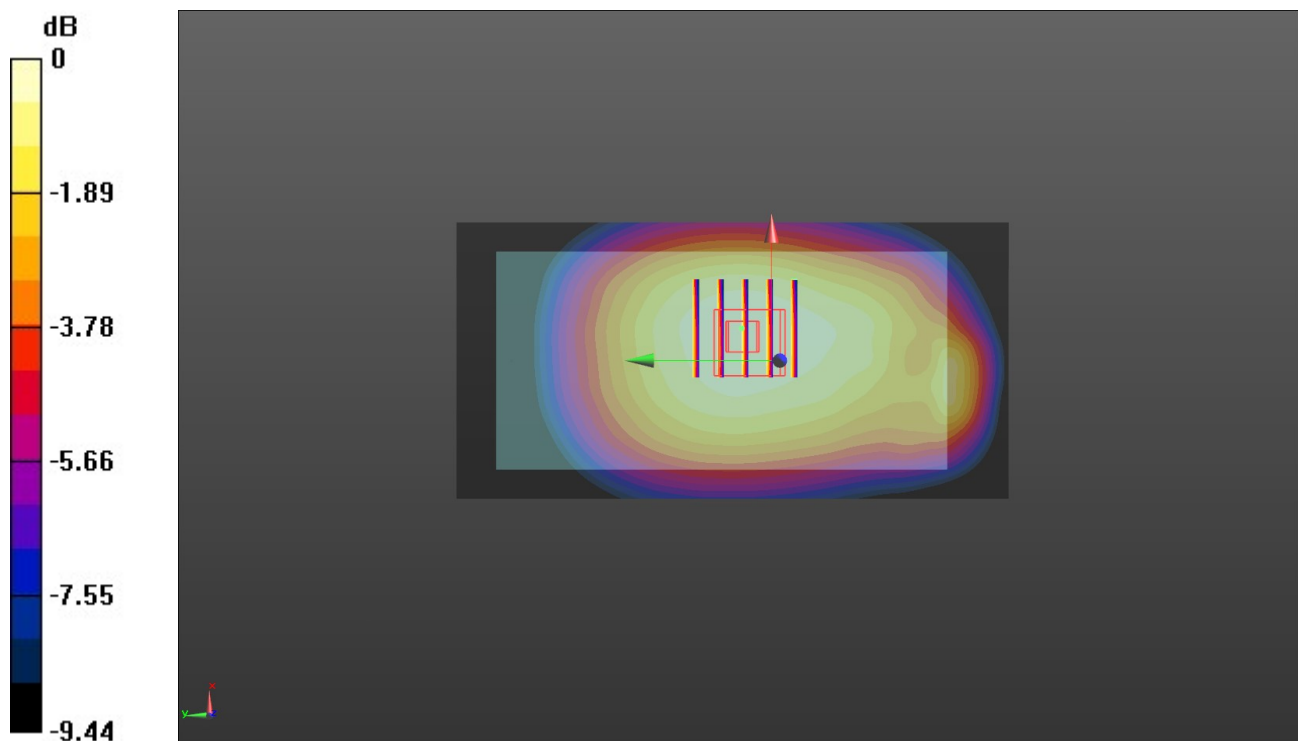
Rear/CH 190/Zoom Scan (5x5x7)/Cube 0: Measurement grid: dx=8mm, dy=8mm, dz=5mm

Reference Value = 22.30 V/m; Power Drift = 0.09 dB

Peak SAR (extrapolated) = 0.546 W/kg

SAR(1 g) = 0.368 W/kg; SAR(10 g) = 0.273 W/kg

Maximum value of SAR (measured) = 0.474 W/kg



0 dB = 0.474 W/kg = -3.24 dBW/kg

Test Laboratory: Huatongwei International Inspection Co., Ltd.,SAR Lab

Date: 9/19/2018

GSM 1900-Head

Communication System: UID 0, Generic GPRS(TDMA, GMSK, TN 0-1-2) (0); Frequency: 1850.2 MHz;Duty Cycle: 1:2.66993

Medium parameters used (interpolated): $f = 1850.2$ MHz; $\sigma = 1.437$ S/m; $\epsilon_r = 41.77$; $\rho = 1000$ kg/m³

Phantom section: Right Section

Ambient Temperature:22.8°C;Liquid Temperature:22.3°C;

DASY Configuration:

- Probe: EX3DV4 - SN7494; ConvF(8.83, 8.83, 8.83) @ 1850.2 MHz; Calibrated: 2/26/2018
- Sensor-Surface: 1.4mm (Mechanical Surface Detection)
- Electronics: DAE4 Sn1549; Calibrated: 4/25/2018
- Phantom: Twin-SAM V8.0 ; Type: QD 000 P41 AA; Serial: 1974
- DASY52 52.10.1(1476); SEMCAD X 14.6.11(7439)

Right Cheek Touch/CH 661/Area Scan (61x111x1): Interpolated grid: dx=1.500 mm, dy=1.500 mm

Maximum value of SAR (interpolated) = 0.191 W/kg

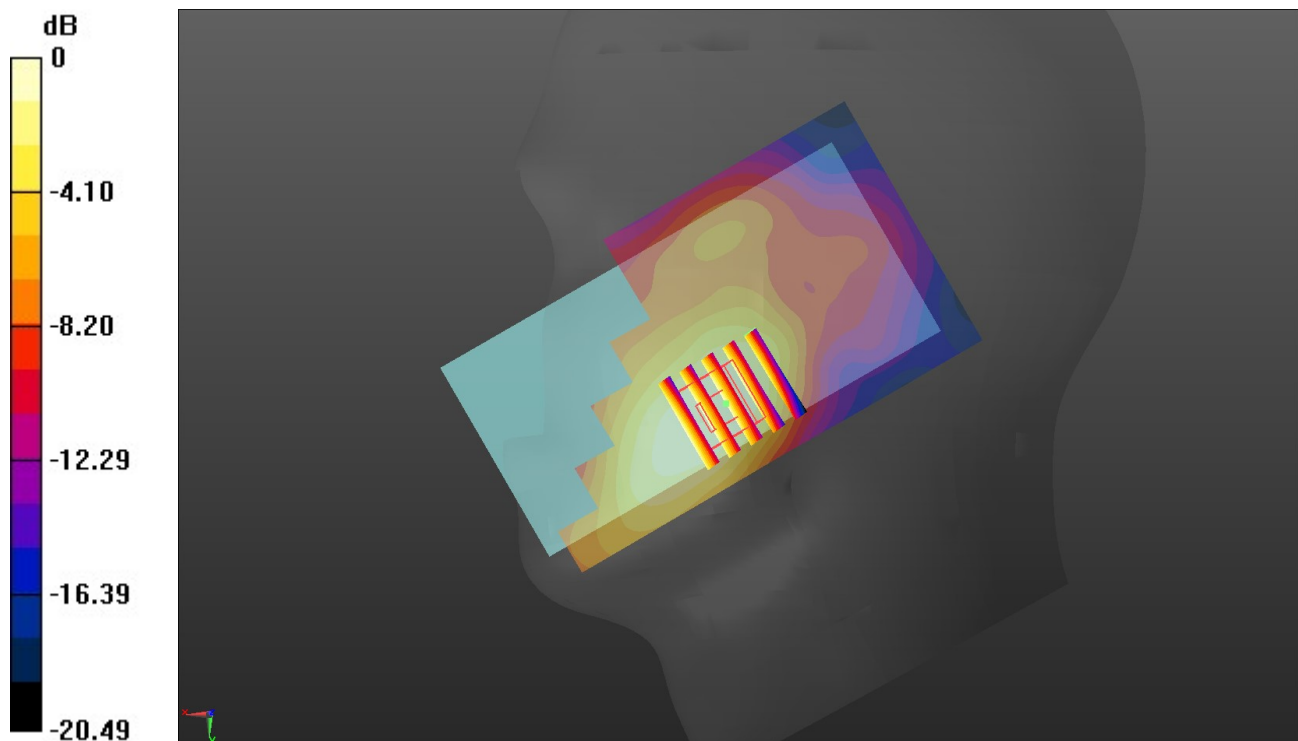
Right Cheek Touch/CH 661/Zoom Scan (5x5x7)/Cube 0: Measurement grid: dx=8mm, dy=8mm, dz=5mm

Reference Value = 3.802 V/m; Power Drift = -0.14 dB

Peak SAR (extrapolated) = 0.210 W/kg

SAR(1 g) = 0.130 W/kg; SAR(10 g) = 0.081 W/kg

Maximum value of SAR (measured) = 0.179 W/kg



0 dB = 0.179 W/kg = -7.47 dBW/kg

Test Laboratory: Huatongwei International Inspection Co., Ltd.,SAR Lab

Date: 9/20/2018

GSM 1900-Body

Communication System: UID 0, Generic GPRS(TDMA, GMSK, TN 0-1-2) (0); Frequency: 1850.2 MHz;Duty Cycle: 1:2.66993

Medium parameters used (interpolated): $f = 1850.2$ MHz; $\sigma = 1.517$ S/m; $\epsilon_r = 53.775$; $\rho = 1000$ kg/m³

Phantom section: Flat Section

Ambient Temperature:22.7°C;Liquid Temperature:22.4°C;

DASY Configuration:

- Probe: EX3DV4 - SN7494; ConvF(8.42, 8.42, 8.42) @ 1850.2 MHz; Calibrated: 2/26/2018
- Sensor-Surface: 1.4mm (Mechanical Surface Detection)
- Electronics: DAE4 Sn1549; Calibrated: 4/25/2018
- Phantom: ELI V8.0 ; Type: QD OVA 004 AA ; Serial: 2078
- DASY52 52.10.1(1476); SEMCAD X 14.6.11(7439)

Rear/CH 661/Area Scan (61x121x1): Interpolated grid: dx=1.500 mm, dy=1.500 mm

Maximum value of SAR (interpolated) = 0.976 W/kg

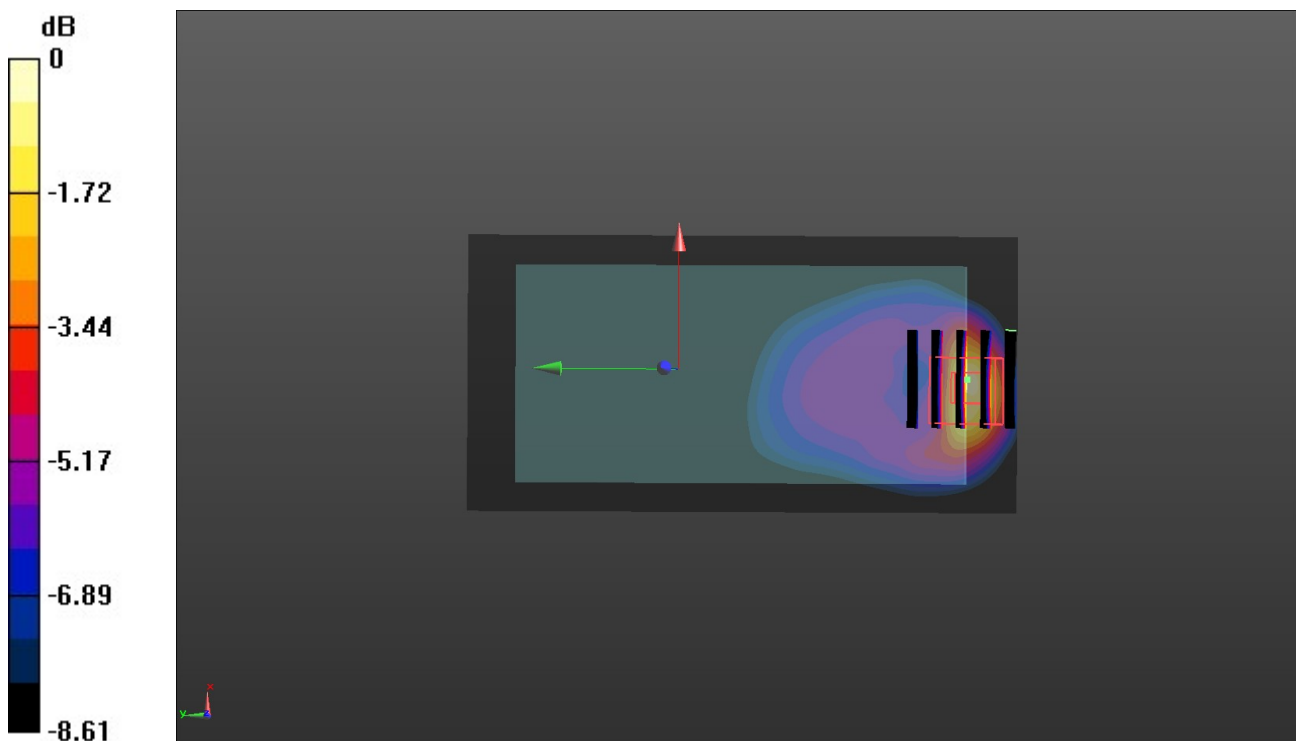
Rear/CH 661/Zoom Scan (5x5x7)/Cube 0: Measurement grid: dx=8mm, dy=8mm, dz=5mm

Reference Value = 9.878 V/m; Power Drift = 0.05 dB

Peak SAR (extrapolated) = 1.28 W/kg

SAR(1 g) = 0.669 W/kg; SAR(10 g) = 0.344 W/kg

Maximum value of SAR (measured) = 1.04 W/kg



0 dB = 1.04 W/kg = 0.17 dBW/kg

Test Laboratory: Huatongwei International Inspection Co., Ltd.,SAR Lab

Date: 9/19/2018

WCDMA Band II-Head

Communication System: UID 0, Generic UMTS (0); Frequency: 1880 MHz;Duty Cycle: 1:1

Medium parameters used: $f = 1880$ MHz; $\sigma = 1.455$ S/m; $\epsilon_r = 41.738$; $\rho = 1000$ kg/m³

Phantom section: Right Section

Ambient Temperature:22.8°C;Liquid Temperature:22.3°C;

DASY Configuration:

- Probe: EX3DV4 - SN7494; ConvF(8.83, 8.83, 8.83) @ 1880 MHz; Calibrated: 2/26/2018
- Sensor-Surface: 1.4mm (Mechanical Surface Detection)
- Electronics: DAE4 Sn1549; Calibrated: 4/25/2018
- Phantom: Twin-SAM V8.0 ; Type: QD 000 P41 AA; Serial: 1974
- DASY52 52.10.1(1476); SEMCAD X 14.6.11(7439)

Right Cheek Touch/CH 9400/Area Scan (61x111x1): Interpolated grid: dx=1.500 mm, dy=1.500 mm

Maximum value of SAR (interpolated) = 0.277 W/kg

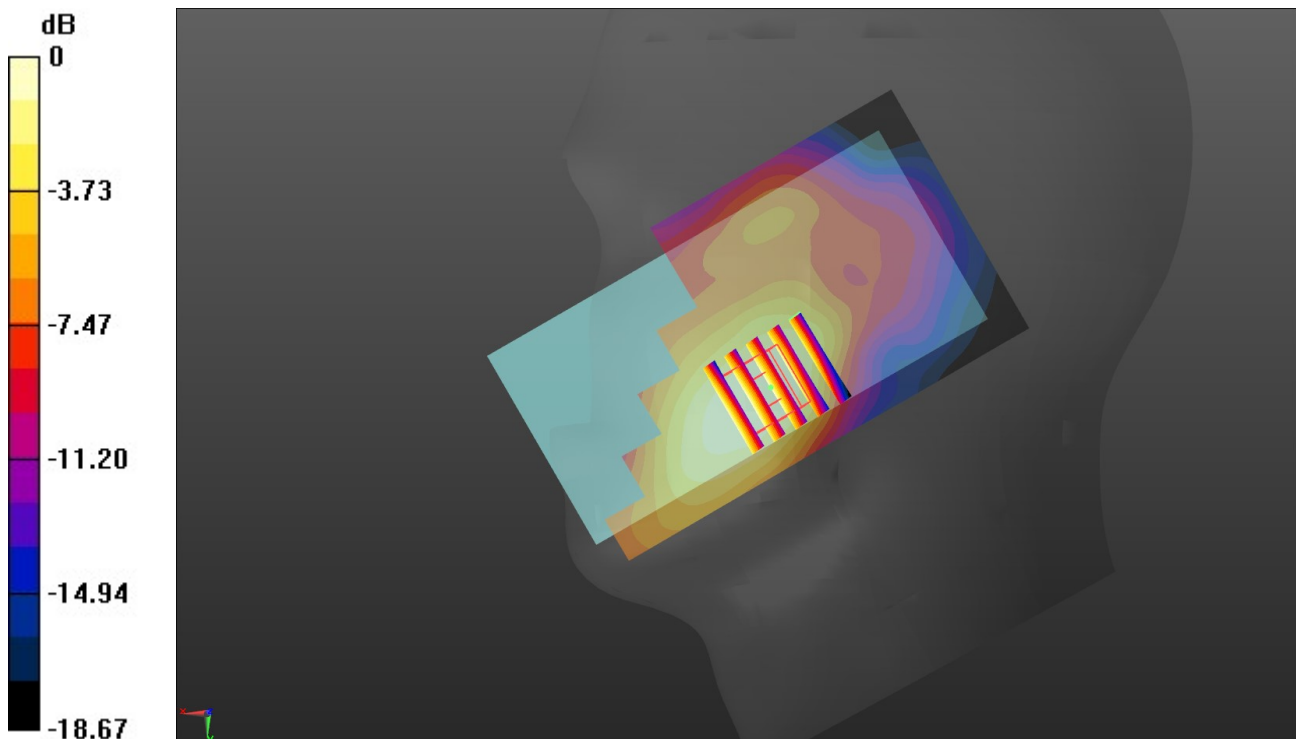
Right Cheek Touch/CH 9400/Zoom Scan (5x5x7)/Cube 0: Measurement grid: dx=8mm, dy=8mm, dz=5mm

Reference Value = 4.319 V/m; Power Drift = -0.15 dB

Peak SAR (extrapolated) = 0.301 W/kg

SAR(1 g) = 0.187 W/kg; SAR(10 g) = 0.114 W/kg

Maximum value of SAR (measured) = 0.258 W/kg



0 dB = 0.258 W/kg = -5.88 dBW/kg

Test Laboratory: Huatongwei International Inspection Co., Ltd.,SAR Lab

Date: 9/20/2018

WCDMA Band II-Body

Communication System: UID 0, Generic UMTS (0); Frequency: 1907.6 MHz;Duty Cycle: 1:1

Medium parameters used (interpolated): $f = 1907.6$ MHz; $\sigma = 1.557$ S/m; $\epsilon_r = 53.715$; $\rho = 1000$ kg/m³

Phantom section: Flat Section

Ambient Temperature:22.7°C;Liquid Temperature:22.4°C;

DASY Configuration:

- Probe: EX3DV4 - SN7494; ConvF(8.42, 8.42, 8.42) @ 1907.6 MHz; Calibrated: 2/26/2018
- Sensor-Surface: 1.4mm (Mechanical Surface Detection)
- Electronics: DAE4 Sn1549; Calibrated: 4/25/2018
- Phantom: ELI V8.0 ; Type: QD OVA 004 AA ; Serial: 2078
- DASY52 52.10.1(1476); SEMCAD X 14.6.11(7439)

Rear/CH 9538/Area Scan (61x121x1): Interpolated grid: dx=1.500 mm, dy=1.500 mm

Maximum value of SAR (interpolated) = 1.87 W/kg

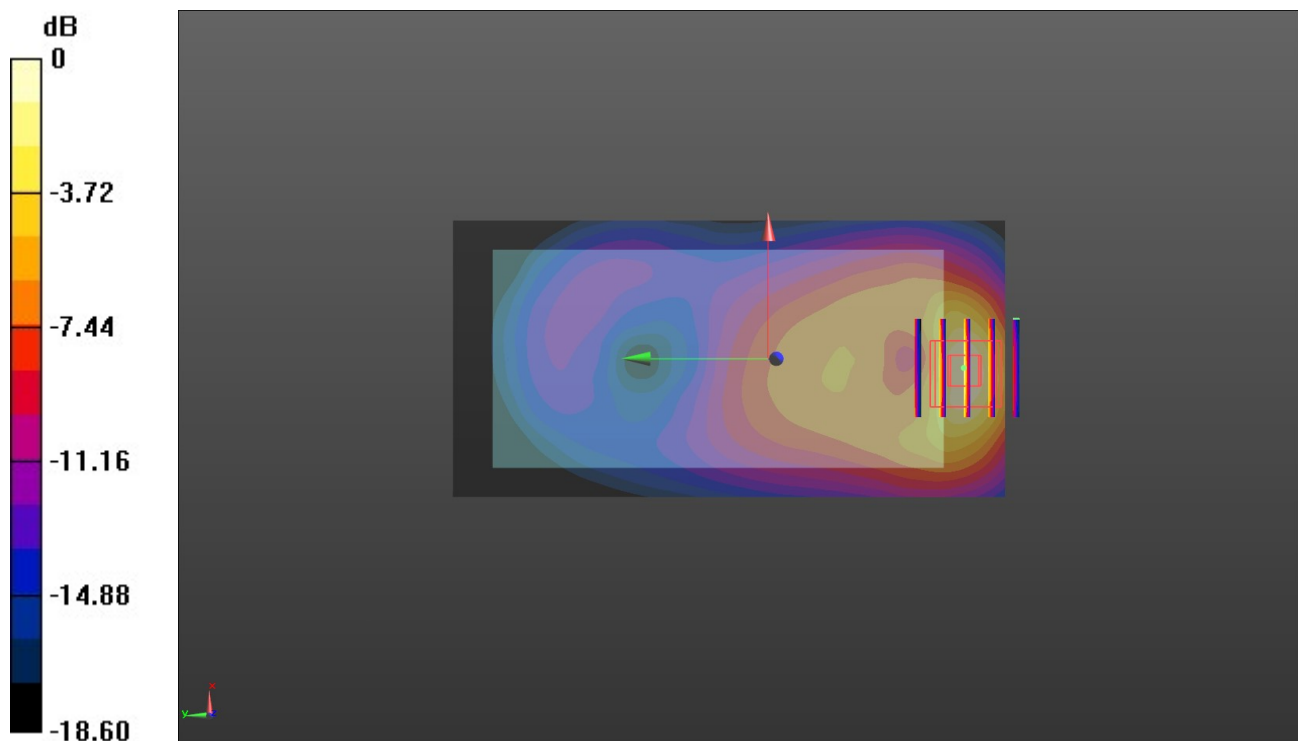
Rear/CH 9538/Zoom Scan (5x5x7)/Cube 0: Measurement grid: dx=8mm, dy=8mm, dz=5mm

Reference Value = 11.41 V/m; Power Drift = -0.10 dB

Peak SAR (extrapolated) = 2.26 W/kg

SAR(1 g) = 1.18 W/kg; SAR(10 g) = 0.600 W/kg

Maximum value of SAR (measured) = 1.84 W/kg



0 dB = 1.84 W/kg = 2.65 dBW/kg

Test Laboratory: Huatongwei International Inspection Co., Ltd.,SAR Lab

Date: 9/17/2018

WCDMA Band V-Head

Communication System: UID 0, Generic UMTS (0); Frequency: 836.6 MHz;Duty Cycle: 1:1

Medium parameters used (interpolated): $f = 836.6$ MHz; $\sigma = 0.933$ S/m; $\epsilon_r = 43.899$; $\rho = 1000$ kg/m³

Phantom section: Left Section

Ambient Temperature:22.7°C;Liquid Temperature:22.4°C;

DASY Configuration:

- Probe: EX3DV4 - SN7494; ConvF(10.73, 10.73, 10.73) @ 836.6 MHz; Calibrated: 2/26/2018
- Sensor-Surface: 1.4mm (Mechanical Surface Detection)
- Electronics: DAE4 Sn1549; Calibrated: 4/25/2018
- Phantom: Twin-SAM V8.0 ; Type: QD 000 P41 AA; Serial: 1974
- DASY52 52.10.1(1476); SEMCAD X 14.6.11(7439)

Left Touch Cheek/CH 4183/Area Scan (61x111x1): Interpolated grid: dx=1.500 mm, dy=1.500 mm

[Info: Interpolated medium parameters used for SAR evaluation.](#)

Maximum value of SAR (interpolated) = 0.294 W/kg

Left Touch Cheek/CH 4183/Zoom Scan (5x5x7)/Cube 0: Measurement grid: dx=8mm, dy=8mm, dz=5mm

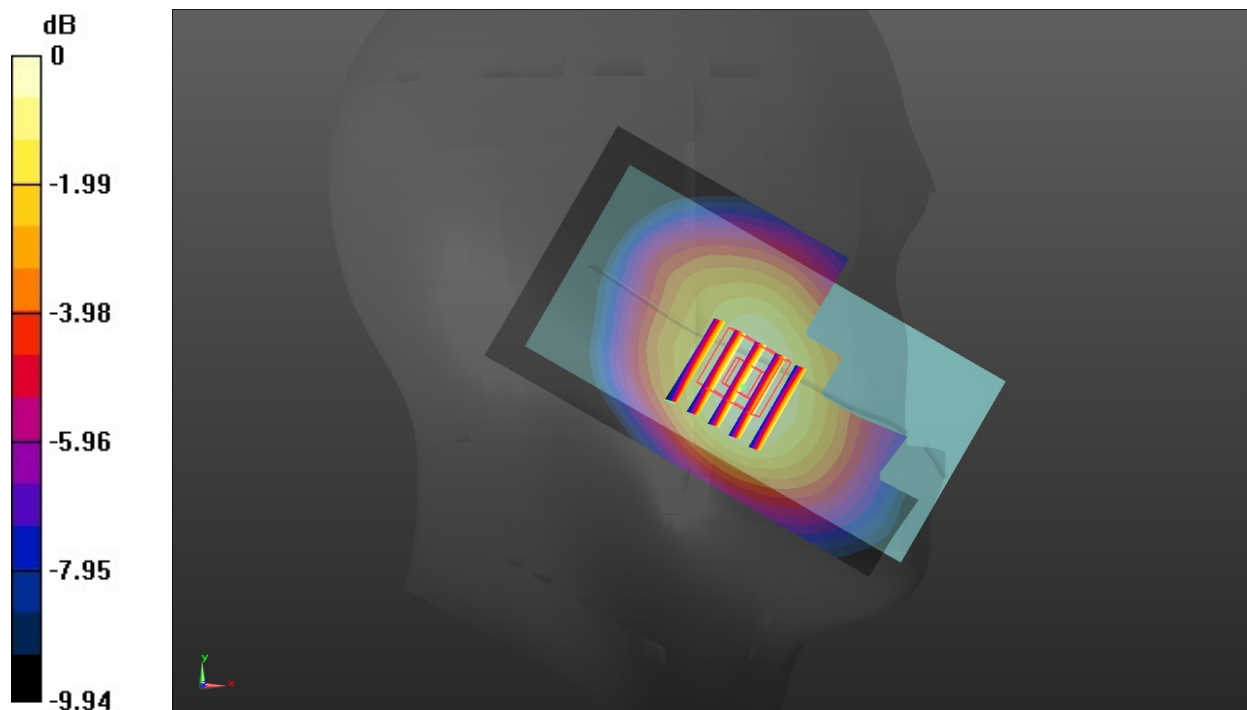
Reference Value = 5.165 V/m; Power Drift = 0.13 dB

Peak SAR (extrapolated) = 0.320 W/kg

SAR(1 g) = 0.236 W/kg; SAR(10 g) = 0.173 W/kg

[Info: Interpolated medium parameters used for SAR evaluation.](#)

Maximum value of SAR (measured) = 0.292 W/kg



0 dB = 0.292 W/kg = -5.35 dBW/kg

Test Laboratory: Huatongwei International Inspection Co., Ltd.,SAR Lab

Date: 9/18/2018

WCDMA Band V-Body

Communication System: UID 0, Generic UMTS (0); Frequency: 836.6 MHz;Duty Cycle: 1:1

Medium parameters used (interpolated): $f = 836.6$ MHz; $\sigma = 0.967$ S/m; $\epsilon_r = 55.399$; $\rho = 1000$ kg/m³

Phantom section: Flat Section

Ambient Temperature:22.7°C;Liquid Temperature:22.2°C;

DASY Configuration:

- Probe: EX3DV4 - SN7494; ConvF(10.5, 10.5, 10.5) @ 836.6 MHz; Calibrated: 2/26/2018
- Sensor-Surface: 1.4mm (Mechanical Surface Detection)
- Electronics: DAE4 Sn1549; Calibrated: 4/25/2018
- Phantom: ELI V8.0 ; Type: QD OVA 004 AA ; Serial: 2078
- DASY52 52.10.1(1476); SEMCAD X 14.6.11(7439)

Rear/CH 4183/Area Scan (61x121x1): Interpolated grid: dx=1.500 mm, dy=1.500 mm

Maximum value of SAR (interpolated) = 0.449 W/kg

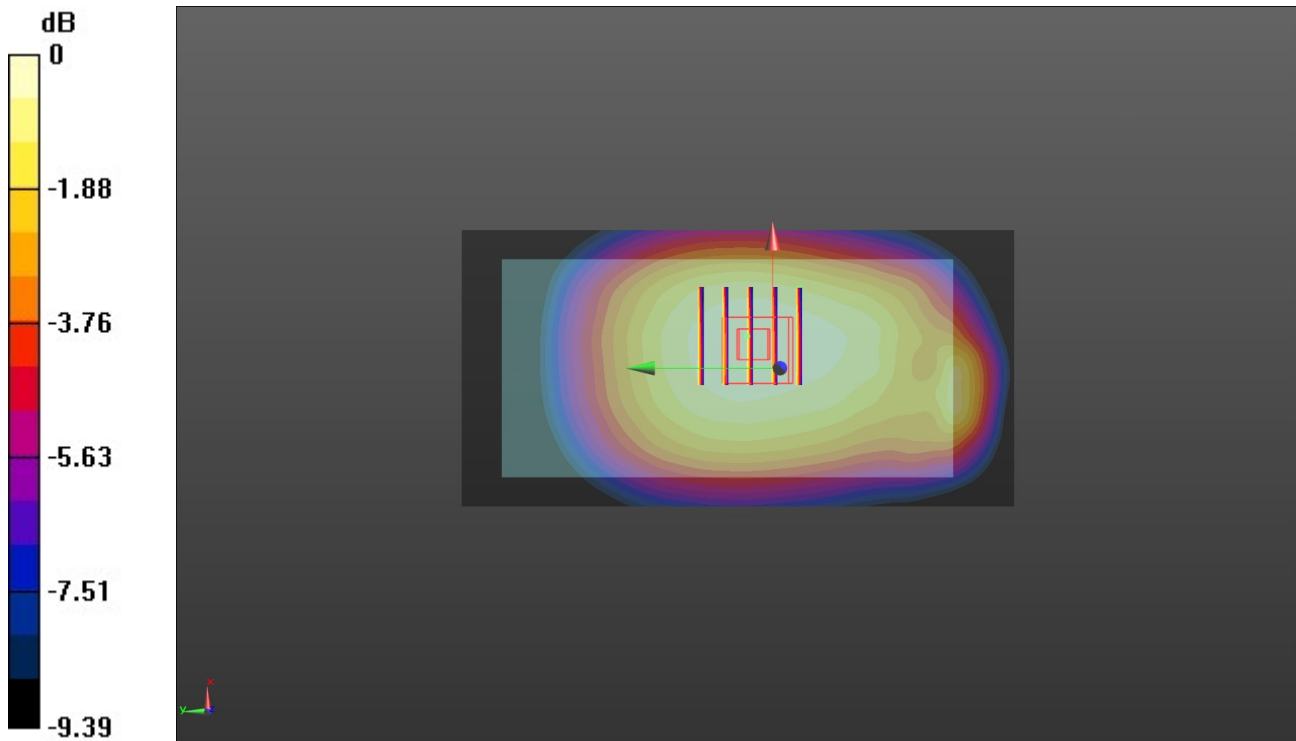
Rear/CH 4183/Zoom Scan (5x5x7)/Cube 0: Measurement grid: dx=8mm, dy=8mm, dz=5mm

Reference Value = 21.56 V/m; Power Drift = 0.16 dB

Peak SAR (extrapolated) = 0.520 W/kg

SAR(1 g) = 0.352 W/kg; SAR(10 g) = 0.261 W/kg

Maximum value of SAR (measured) = 0.451 W/kg



0 dB = 0.451 W/kg = -3.46 dBW/kg

Test Laboratory: Huatongwei International Inspection Co., Ltd.,SAR Lab

Date: 10/8/2018

WIFI 2.4G-Head

Communication System: UID 0, Generic WIFI (0); Frequency: 2462 MHz;Duty Cycle: 1:1

Medium parameters used (interpolated): $f = 2462$ MHz; $\sigma = 1.852$ S/m; $\epsilon_r = 40.886$; $\rho = 1000$ kg/m³

Phantom section: Left Section

Ambient Temperature:22.7°C;Liquid Temperature:22.3°C;

DASY Configuration:

- Probe: EX3DV4 - SN7494; ConvF(8.27, 8.27, 8.27) @ 2462 MHz; Calibrated: 2/26/2018
- Sensor-Surface: 1.4mm (Mechanical Surface Detection)
- Electronics: DAE4 Sn1549; Calibrated: 4/25/2018
- Phantom: Twin-SAM V8.0 ; Type: QD 000 P41 AA; Serial: 1974
- DASY52 52.10.1(1476); SEMCAD X 14.6.11(7439)

Left Touch Cheek/CH 6/Area Scan (81x141x1): Interpolated grid: dx=1.200 mm, dy=1.200 mm.

Maximum value of SAR (interpolated) = 0.195 W/kg

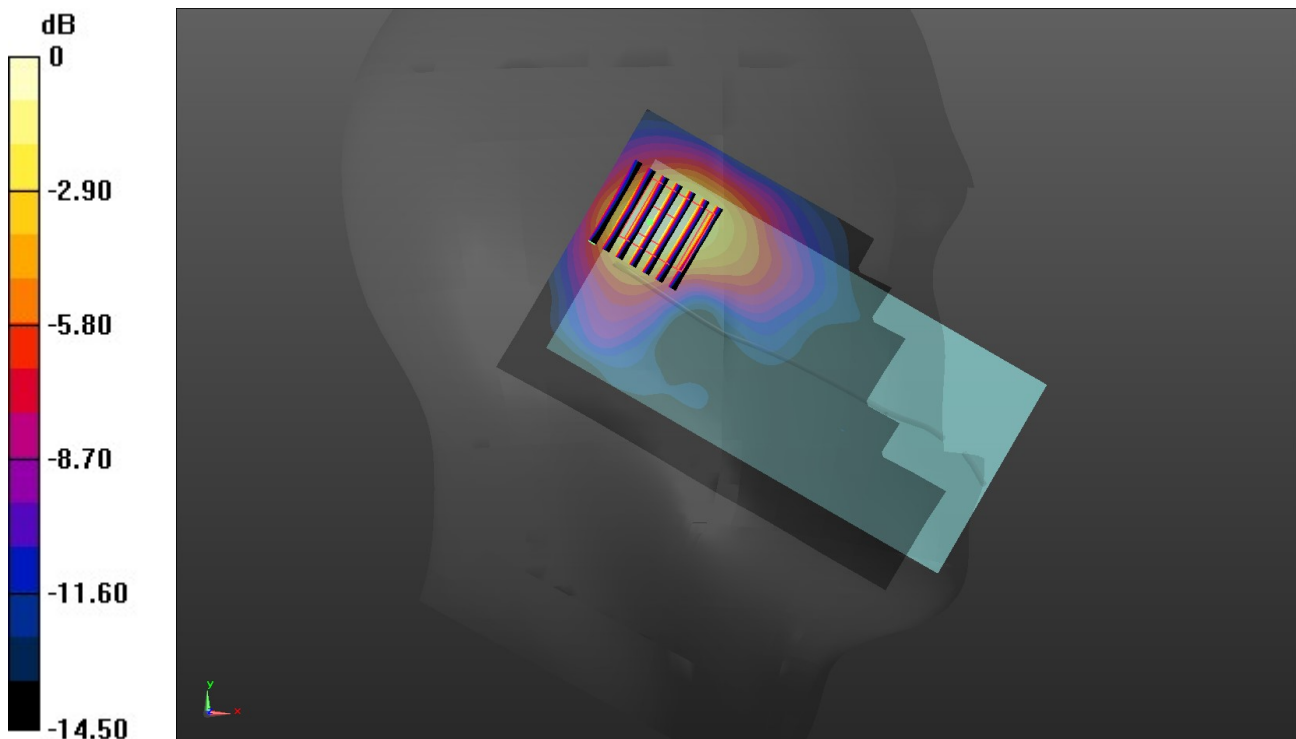
Left Touch Cheek/CH 6/Zoom Scan (7x7x7)/Cube 0: Measurement grid: dx=5mm, dy=5mm, dz=5mm

Reference Value = 6.336 V/m; Power Drift = -0.13 dB

Peak SAR (extrapolated) = 0.240 W/kg

SAR(1 g) = 0.112 W/kg; SAR(10 g) = 0.057 W/kg

Maximum value of SAR (measured) = 0.185 W/kg



0 dB = 0.185 W/kg = -7.33 dBW/kg

Test Laboratory: Huatongwei International Inspection Co., Ltd.,SAR Lab

Date: 10/8/2018

WIFI 2.4G-Body

Communication System: UID 0, Generic WIFI (0); Frequency: 2462 MHz;Duty Cycle: 1:1

Medium parameters used (interpolated): $f = 2462$ MHz; $\sigma = 2.012$ S/m; $\epsilon_r = 52.998$; $\rho = 1000$ kg/m³

Phantom section: Flat Section

Ambient Temperature:22.7°C;Liquid Temperature:22.3°C;

DASY Configuration:

- Probe: EX3DV4 - SN7494; ConvF(8.08, 8.08, 8.08) @ 2462 MHz; Calibrated: 2/26/2018
- Sensor-Surface: 1.4mm (Mechanical Surface Detection)
- Electronics: DAE4 Sn1549; Calibrated: 4/25/2018
- Phantom: ELI V8.0 ; Type: QD OVA 004 AA ; Serial: 2078
- DASY52 52.10.1(1476); SEMCAD X 14.6.11(7439)

Rear/CH 190/Area Scan (81x151x1): Interpolated grid: dx=1.200 mm, dy=1.200 mm

Maximum value of SAR (interpolated) = 0.0691 W/kg

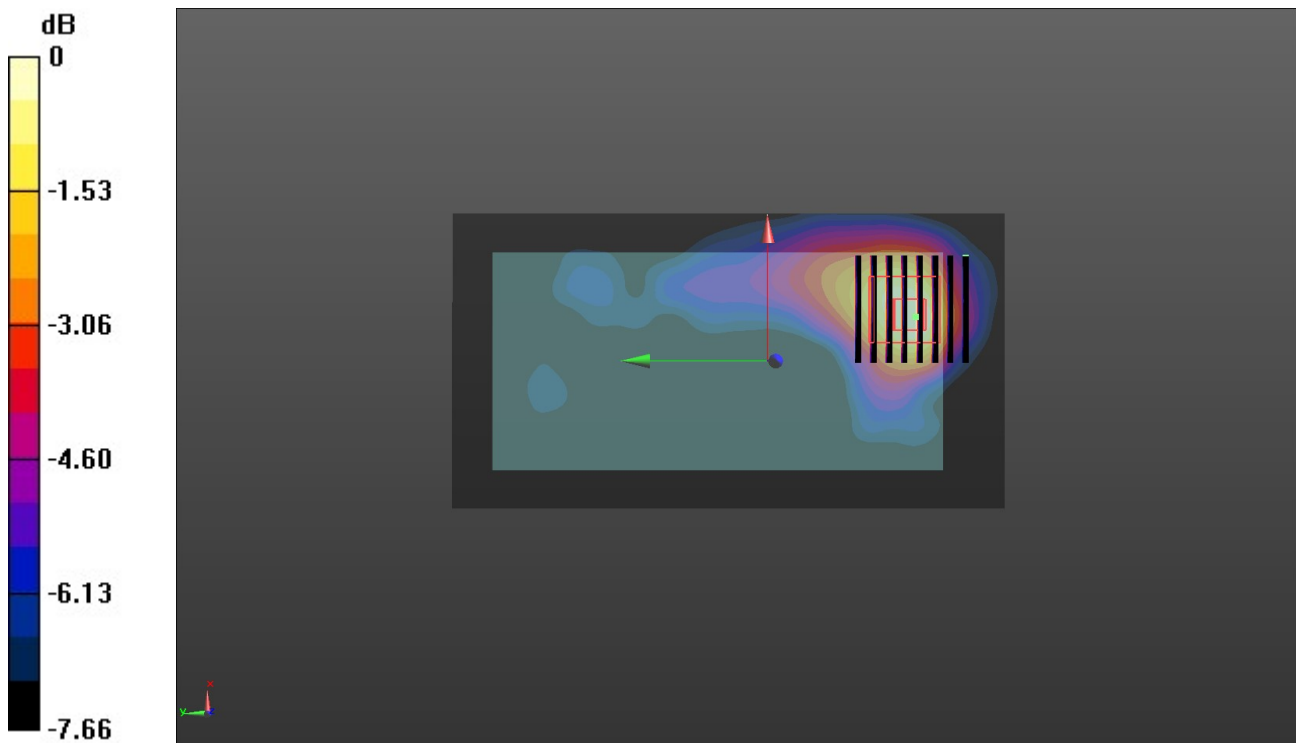
Rear/CH 190/Zoom Scan (8x8x7)/Cube 0: Measurement grid: dx=5mm, dy=5mm, dz=5mm

Reference Value = 1.783 V/m; Power Drift = 0.16 dB

Peak SAR (extrapolated) = 0.0850 W/kg

SAR(1 g) = 0.042 W/kg; SAR(10 g) = 0.024 W/kg

Maximum value of SAR (measured) = 0.0658 W/kg



0 dB = 0.0658 W/kg = -11.82 dBW/kg