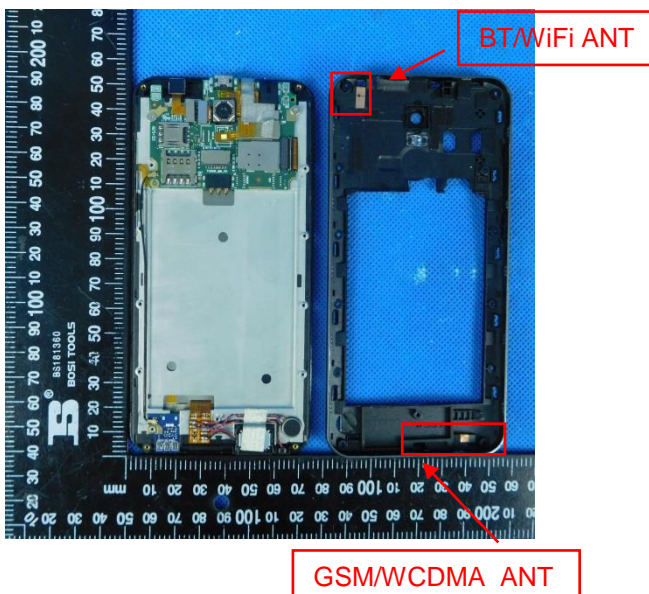
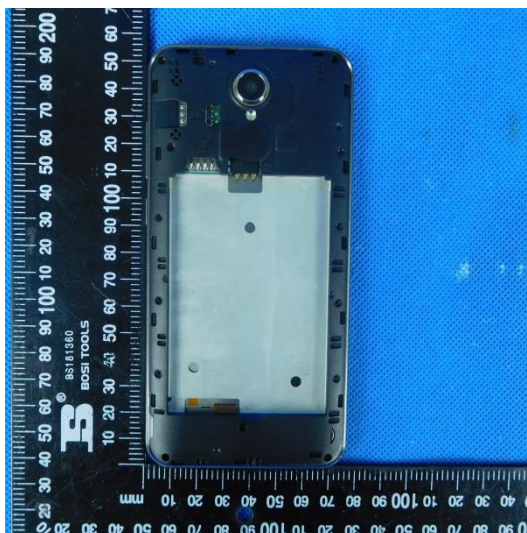
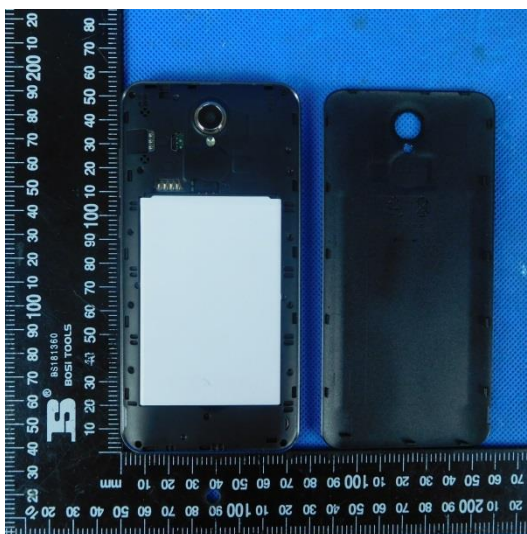
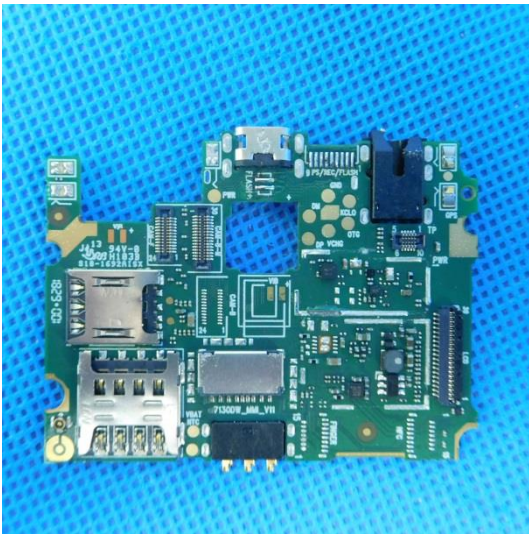
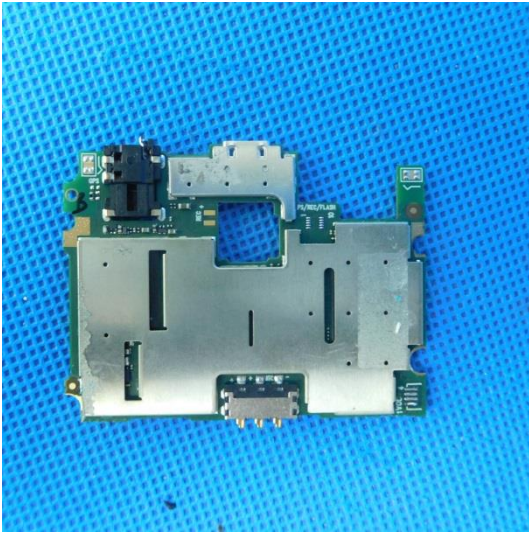
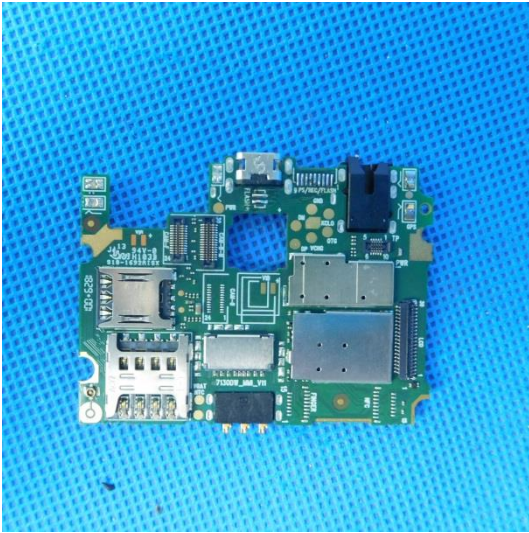
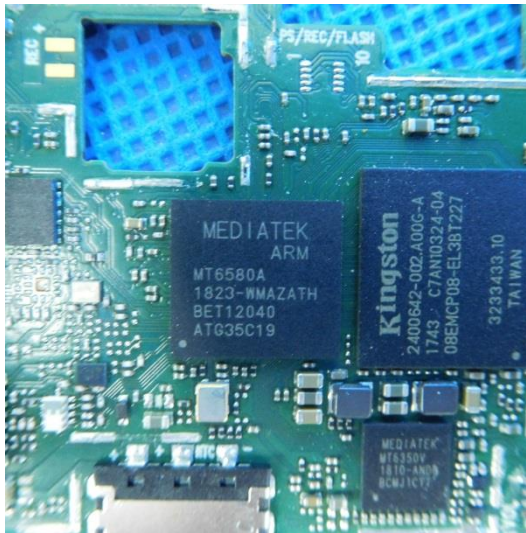


Internal photos of the EUT







 **Li-ion Battery**

Model: S5703E
VOLTAGE: DC 3.8V Capacity: 2700 mAh
10.26 Wh

CAUTION

MAY EXPLODE IF DAMAGED OR DISPOSED OF IN FIRE
DO NOT SHORT CIRCUIT
DO NOT DISASSEMBLE WITHOUT AUTHORIZATION
USE SPECIFIED ADAPTER ONLY

CHARGING ENVIRONMENT
TEMPERATURE: 0°C-50°C

Made In China

