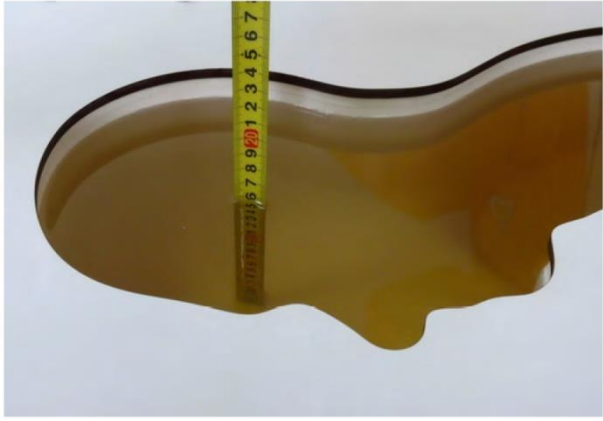




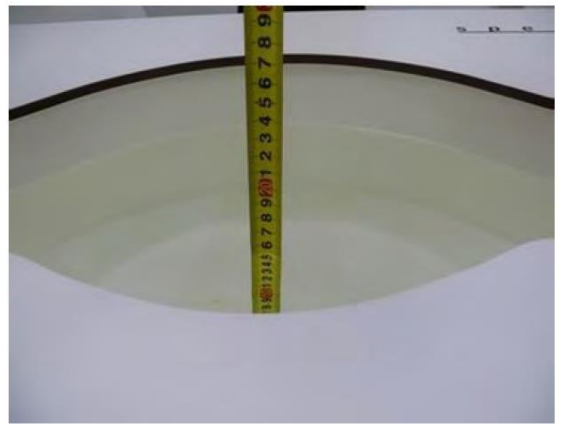
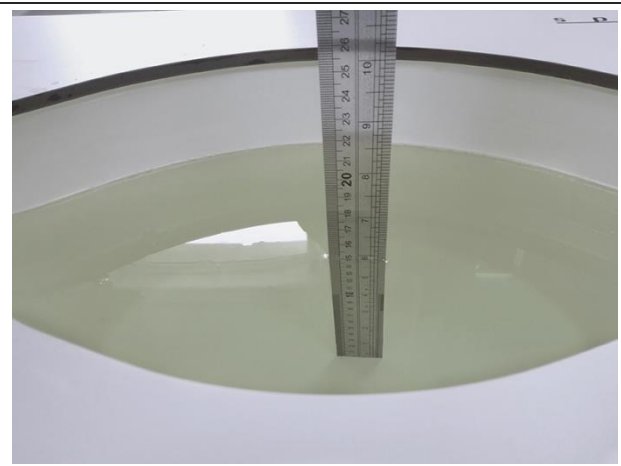


### 16. TestSetup Photos

	
Liquid depth in the head phantom (835MHz)	Liquid depth in the body phantom (835MHz)
	
Liquid depth in the head phantom (1750MHz)	Liquid depth in the body phantom (1750MHz)
	
Liquid depth in the head phantom (1900MHz)	Liquid depth in the body phantom (1900MHz)



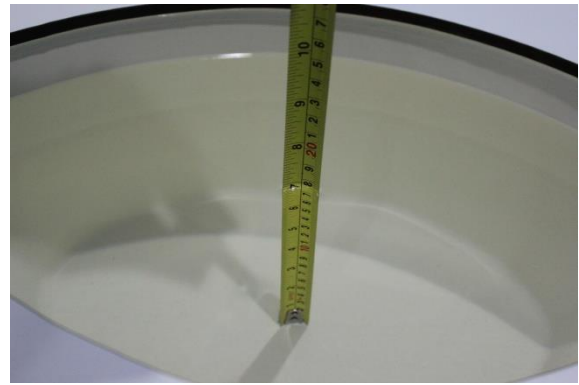
Liquid depth in the head phantom (2450MHz)



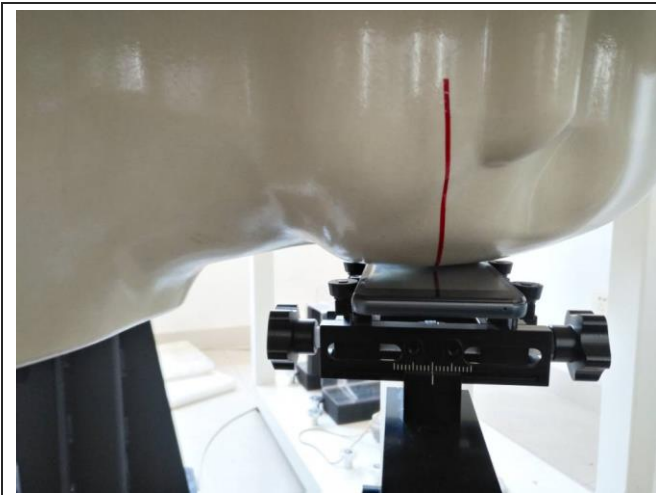
Liquid depth in the body phantom (2450MHz)



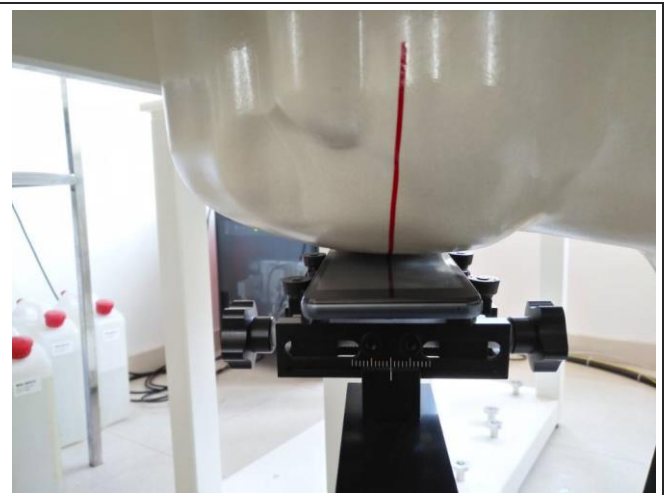
Liquid depth in the head phantom (2600MHz)



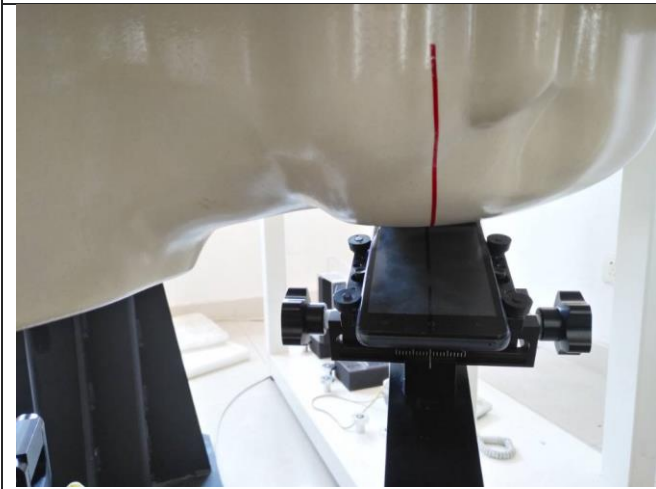
Liquid depth in the body phantom (2600MHz)



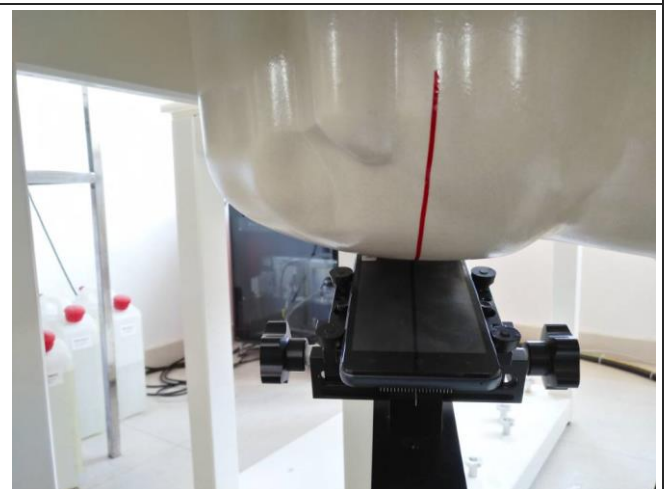
Left Cheek Touch



Right Cheek Touch



Left Cheek Tilt (15°)



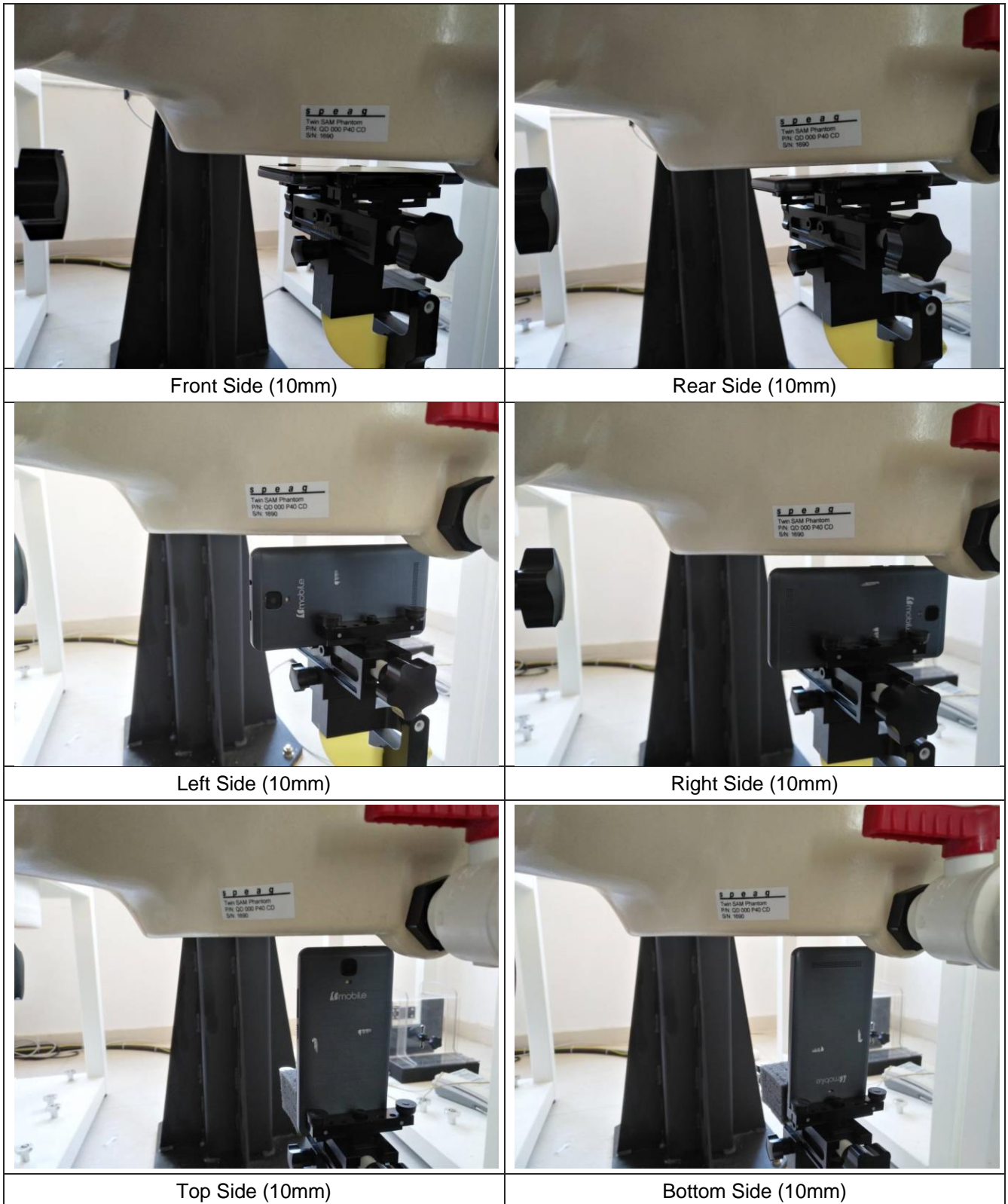
Right Cheek Tilt (15°)



Body-worn Front Side (10mm)



Body-worn Rear Side (10mm)



### **17. External and Internal Photos of the EUT**

Please reference to the report No.: TRE1712012601

**-----End of Report-----**