



FCC REPORT

Report Reference No...... : **TRE1712020701** R/C.....: 55390
FCC ID..... : **ZSW-30-056**
Applicant's name..... : **b mobile HK Limited**
Address..... : Flat 18; 14/F Block 1; Golden Industrial Building;16-26 Kwai Tak Street; Kwai Chung; New Territories; Hong Kong.
Manufacturer..... : b mobile HK Limited
Address..... : Flat 18; 14/F Block 1; Golden Industrial Building;16-26 Kwai Tak Street; Kwai Chung; New Territories; Hong Kong.
Test item description : **Mobile Phone**
Trade Mark : Bmobile
Model/Type reference..... : AX1016
Listed Model(s)..... : -
Standard : **FCC Part 22: PUBLIC MOBILE SERVICES**
FCC Part 24: PERSONAL COMMUNICATIONS SERVICES
Date of receipt of test sample..... : Dec.21, 2017
Date of testing..... : Dec.22, 2017 - Jan.03, 2018
Date of issue..... : Jan.04, 2018
Result..... : **Pass**

Compiled by
 (position+printedname+signature)....: File administrators Candy Liu *Candy Liu*
Supervised by
 (position+printedname+signature)....: Project Engineer : Edward Pan *Edward Pan*
Approved by
 (position+printedname+signature)....: Manager Hans Hu *Hans Hu*

Testing Laboratory Name : **Shenzhen Huatongwei International Inspection Co., Ltd.**
Address..... : 1/F, Bldg 3, Hongfa Hi-tech Industrial Park, Genyu Road, Tianliao, Gongming, Shenzhen, China

Shenzhen Huatongwei International Inspection Co., Ltd. All rights reserved.
 This publication may be reproduced in whole or in part for non-commercial purposes as long as the Shenzhen Huatongwei International Inspection Co., Ltd. is acknowledged as copyright owner and source of the material. Shenzhen Huatongwei International Inspection Co., Ltd. takes no responsibility for and will not assume liability for damages resulting from the reader's interpretation of the reproduced material due to its placement and context.

Contents

1.	<u>TEST STANDARDS AND REPORT VERSION</u>	3
1.1.	Applicable Standards	3
1.2.	Report version	3
2.	<u>TEST DESCRIPTION</u>	4
3.	<u>SUMMARY</u>	5
3.1.	Client Information	5
3.2.	Product Description	5
3.3.	Operation state	6
3.4.	EUT configuration	6
3.5.	Modifications	6
4.	<u>TEST ENVIRONMENT</u>	7
4.1.	Address of the test laboratory	7
4.2.	Test Facility	7
4.3.	Equipments Used during the Test	8
	<u>RF CONDUCTED</u>	8
4.4.	Environmental conditions	9
4.5.	Statement of the measurement uncertainty	9
5.	<u>TEST CONDITIONS AND RESULTS</u>	10
5.1.	Conducted Output Power	10
5.2.	99% & -26 dB Occupied Bandwidth	11
5.3.	Conducted Spurious Emissions	12
5.4.	Band Edge	13
5.5.	ERP and EIRP	14
5.6.	Radiated Spurious Emission	17
5.7.	Frequency stability V.S. Temperature measurement	21
5.8.	Frequency stability V.S. Voltage measurement	22
5.9.	Peak-Average Ratio	23
6.	<u>TEST SETUP PHOTOS OF THE EUT</u>	24
7.	<u>EXTERNAL AND INTERNAL PHOTOS OF THE EUT</u>	25

1. Test standards and Report version

1.1. Applicable Standards

The tests were performed according to following standards:

[FCC Part 22](#):PRIVATE LAND MOBILE RADIO SERVICES.

[FCC Part 24](#):PUBLIC MOBILE SERVICES

[TIA/EIA 603 D June 2010](#):Land Mobile FM or PM Communications Equipment Measurement and Performance Standards.

[FCC Part 2](#):FREQUENCY ALLOCA-TIONS AND RADIO TREATY MAT-TERS; GENERAL RULES AND REG-ULATIONS

[971168 D01 Power Meas License Digital Systems v02r02](#):provides a methodology for fully characterizing the fundamental power of wideband (> 1 MHz) digitally modulated RF signals acceptable to the FCC for demonstrating compliance for licensed transmitters.

1.2. Report version

Version No.	Date of issue	Description
00	Jan.04, 2018	Original

2. Test Description

Test Item	Section in CFR 47	Result	Test Engineer
RF Output Power	Part 2.1046 Part 22.913(a) Part 24.232(c)	Pass	William Wang
99% & -26 dB Occupied Bandwidth	Part 2.1049 Part 22.917(b) Part 24.238(b)	Pass	William Wang
Conducted Spurious Emissions	Part 2.1051 Part 22.917 Part 24.238	Pass	William Wang
Band Edge	Part 2.1051 Part 22.917 Part 24.238	Pass	William Wang
ERP and EIRP	Part 22.913(a) Part 24.232(b)	Pass	William Wang
Radiated Spurious Emissions	Part 2.1053 Part 22.917 Part 24.238	Pass	William Wang
Frequency stability vs. temperature	Part 2.1055(a)(1)(b) Part 22.355 Part 24.235	Pass	William Wang
Frequency stability vs. voltage	Part 2.1055(d)(1)(2) Part 22.355 Part 24.235	Pass	William Wang
Peak-Average Ratio	Part 24.232	Pass	William Wang

Note: The measurement uncertainty is not included in the test result.

3. SUMMARY

3.1. Client Information

Applicant:	b mobile HK Limited
Address:	Flat 18; 14/F Block 1; Golden Industrial Building;16-26 Kwai Tak Street; Kwai Chung; New Territories; Hong Kong.
Manufacturer:	b mobile HK Limited
Address:	Flat 18; 14/F Block 1; Golden Industrial Building;16-26 Kwai Tak Street; Kwai Chung; New Territories; Hong Kong.

3.2. Product Description

Name of EUT:	Mobile Phone
Trade Mark:	Bmobile
Model No.:	AX1016
Listed Model(s):	-
IMEI 1:	325518030001829
IMEI 2:	325518030001845
Power supply:	DC 3.8V
Adapter information:	Input: 100-240Va.c., 50/60Hz, 0.2A Output: 5Vd.c.,700mA
Hardware version:	W4G01_MB_V3.0_20170406
Software version:	Bmobile_AX1016_TIGO_V001(20171218)
2G:	
Support Network:	GSM, GPRS, EGPRS
Support Band:	GSM850, PCS1900
Modulation:	GSM/GPRS: GMSK EGPRS: 8PSK
Transmit Frequency:	GSM850: 824.20MHz-848.80MHz PCS1900: 1850.20MHz-1909.80MHz
Receive Frequency:	GSM850: 869.20MHz-893.80MHz PCS1900: 1930.20MHz-1989.80MHz
GPRS Class:	12
EGPRS Class:	12
Antenna type:	Integral Antenna
Antenna gain:	GSM850: -0.5dBi PCS1900: -0.5dBi

3.3. Operation state

➤ Test frequency list

GSM850		PCS1900	
Channel	Frequency (MHz)	Channel	Frequency (MHz)
128	824.20	512	1850.20
190	836.60	661	1880.00
251	848.80	810	1909.80

➤ Test mode

For RF test items

The EUT has been tested under typical operating condition. Testing was performed by configuring EUT to maximum output power status.

The Test EUT support two SIM card(SIM1,SIM2),so all the tests are performed at each SIM card (SIM1,SIM2) mode, the datum recorded is the worst case for all the mode at SIM1 Card mode.

3.4. EUT configuration

The following peripheral devices and interface cables were connected during the measurement:

- - supplied by the manufacturer
- - supplied by the lab

	Length (m):	/
	Shield:	/
	Detachable:	/
	Manufacturer:	/
	Model No.:	/

3.5. Modifications

No modifications were implemented to meet testing criteria.

4. TEST ENVIRONMENT

4.1. Address of the test laboratory

Laboratory: Shenzhen Huatongwei International Inspection Co., Ltd.

Address: 1/F, Bldg 3, Hongfa Hi-tech Industrial Park, Genyu Road, Tianliao, Gongming, Shenzhen, China

4.2. Test Facility

CNAS-Lab Code: L1225

Shenzhen Huatongwei International Inspection Co., Ltd. has been assessed and proved to be in compliance with CNAS-CL01 Accreditation Criteria for Testing and Calibration Laboratories (identical to ISO/IEC17025: 2005 General Requirements) for the Competence of Testing and Calibration Laboratories.

A2LA-Lab Cert. No.: 3902.01

Shenzhen Huatongwei International Inspection Co., Ltd. EMC Laboratory has been accredited by A2LA for technical competence in the field of electrical testing, and proved to be in compliance with ISO/IEC 17025: 2005 General Requirements for the Competence of Testing and Calibration Laboratories and any additional program requirements in the identified field of testing.

FCC-Registration No.: 762235

Shenzhen Huatongwei International Inspection Co., Ltd. EMC Laboratory has been registered and fully described in a report filed with the FCC (Federal Communications Commission). The acceptance letter from the FCC is maintained in our files.

IC-Registration No.:5377B-1

Two 3m Alternate Test Site of Shenzhen Huatongwei International Inspection Co., Ltd. has been registered by Certification and Engineering Bureau of Industry Canada for the performance of radiated measurements with Registration No.: 5377B-1.

ACA

Shenzhen Huatongwei International Inspection Co., Ltd. EMC Laboratory can also perform testing for the Australian C-Tick mark as a result of our A2LA accreditation.

4.3. Equipments Used during the Test

RF Conducted						
No.	Equipment	Manufacturer	Model No.	SerialNo.	Last Cal. (mm/dd/yy)	Next Cal. (mm/dd/yy)
1	UNIVERSAL RADIO COMMUNICATION	Rohde&Schwarz	CMU200	112012	11/11/2017	11/11/2018
2	WIDEB.RADIO COMM.TESRER	Rohde&Schwarz	CMW500	137688	10/26/2017	10/25/2018
3	Spectrum Analyzer	Rohde&Schwarz	FSW26	103440	11/11/2017	11/10/2018
4	MXA Signal Analyzer	Agilent Technologies	N9020A	MY5050187	11/10/2017	11/09/2018
5	Splitter	Mini-Circuit	ZAPD-4	400059	03/20/2017	03/19/2018
6	Climate Chamber	ESPEC	EL-10KA	05107008	11/10/2017	11/09/2018

RF Radiated						
No.	Equipment	Manufacturer	Model No.	SerialNo.	Last Cal. (mm/dd/yy)	Next Cal. (mm/dd/yy)
1	UNIVERSAL RADIO COMMUNICATION	Rohde&Schwarz	CMU200	112012	11/11/2017	11/11/2018
2	WIDEB.RADIO COMM.TESRER	Rohde&Schwarz	CMW500	137688	10/26/2017	10/25/2018
3	Spectrum Analyzer	Rohde&Schwarz	FSW26	103440	11/11/2017	11/10/2018
4	HORNANTENNA	ShwarzBeck	9120D	1011	03/27/2017	03/26/2020
5	Ultra-Broadband Antenna	ShwarzBeck	VULB9163	538	04/05/2017	04/04/2020
6	TURNTABLE	MATURO	TT2.0	N/A	N/A	N/A
7	ANTENNA MAST	MATURO	TAM-4.0-P	N/A	N/A	N/A
8	EMI Test Software	Audix	E3	N/A	N/A	N/A
9	EMI Test Receiver	R&S	ESCI	101247	11/11/2017	11/10/2018
10	High pass filter	Compliance Direction systems	BSU-6	34202	11/11/2017	11/10/2018
11	Preamplifier	ShwarzBeck	BBV 9718	9718-248	10/18/2017	10/17/2018
12	Broadband Preamplifier	ShwarzBeck	BBV 9743	9743-0022	10/18/2017	10/17/2018
13	Signal Generator	Rohde&Schwarz	SMB100A	114360	06/13/2017	06/12/2018
14	Pre-amplifier	SCHWARZBECK	BBV 9742	N/A	11/22/2017	11/21/2018
15	Turntable	Maturo Germany	TT2.0-1T	N/A	N/A	N/A
16	Antenna Mast	Maturo Germany	CAM-4.0-P-12	N/A	N/A	N/A
17	Test Software	R&S	ES-K1	N/A	N/A	N/A
18	Loop Antenna	R&S	HFH2-Z2	100020	11/20/2017	11/19/2020
19	RF Connection Cable	HUBER+SUHNER	N/A	N/A	11/21/2017	11/20/2018
20	RF Connection Cable	HUBER+SUHNER	SUCOFLEX104	501184/4	11/21/2017	11/20/2018
21	RF Connection Cable	HUBER+SUHNER	MULTIFLEX 141	N/A	11/21/2017	11/20/2018
22	Spectrum Analyzer	R&S	FSP40	100597	11/11/2017	11/10/2018
23	RF Connection Cable	HUBER+SUHNER	RE-7-FH	N/A	11/21/2017	11/20/2018
24	RF Connection Cable	HUBER+SUHNER	RE-7-FL	N/A	11/21/2017	11/20/2018

The calibration interval was one year

4.4. Environmental conditions

During the measurement the environmental conditions were within the listed ranges:

Normal Temperature/Tnor:	15~35°C
Relative Humidity	30~60 %
Air Pressure	950-1050 hPa

4.5. Statement of the measurement uncertainty

The data and results referenced in this document are true and accurate. The reader is cautioned that there may be errors within the calibration limits of the equipment and facilities. The measurement uncertainty was calculated for all measurements listed in this test report acc. to TR-100028-01 "Electromagnetic compatibility and Radio spectrum Matters (ERM); Uncertainties in the measurement of mobile radio equipment characteristics; Part 1" and TR-100028-02 "Electromagnetic compatibility and Radio spectrum Matters (ERM); Uncertainties in the measurement of mobile radio equipment characteristics; Part 2" and is documented in the Shenzhen Huatongwei International Inspection Co., Ltd quality system acc. to DIN EN ISO/IEC 17025. Furthermore, component and process variability of devices similar to that tested may result in additional deviation. The manufacturer has the sole responsibility of continued compliance of the device.

Hereafter the best measurement capability for Shenzhen Huatongwei laboratory is reported:

Test Items	Measurement Uncertainty	Notes
Frequency stability	25 Hz	(1)
Transmitter power conducted	0.57 dB	(1)
Transmitter power Radiated	2.20 dB	(1)
Conducted spurious emission 9KHz-12.75 GHz	1.60 dB	(1)
Conducted Emission 9KHz-30MHz	3.39 dB	(1)
Radiated Emission 30~1000MHz	4.24 dB	(1)
Radiated Emission 1~18GHz	5.16 dB	(1)
Radiated Emission 18-40GHz	5.54 dB	(1)
Occupied Bandwidth	-----	(1)

(1) This uncertainty represents an expanded uncertainty expressed at approximately the 95% confidence level using a coverage factor of $k=1.96$.

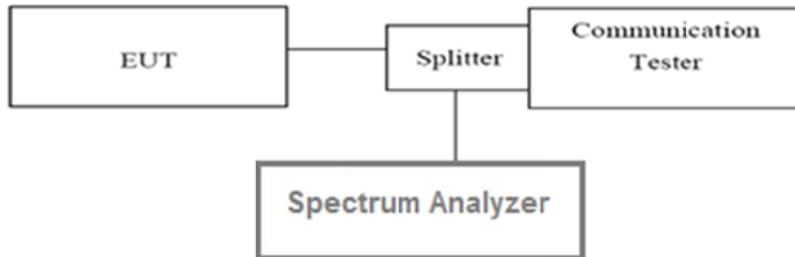
5. TEST CONDITIONS AND RESULTS

5.1. Conducted Output Power

LIMIT

N/A

TEST CONFIGURATION



TEST PROCEDURE

1. The transmitter output port was connected to base station.
2. The RF output of EUT was connected to the spectrum analyzer by RF cable and attenuator, the path loss was compensated to the results for each measurement.
3. Set EUT at maximum power through base station.
4. Select lowest, middle, and highest channels for each band and different modulation.
5. Measure the maximum burst average power.

TEST MODE:

Please refer to the clause 3.3

TEST RESULTS

Passed **Not Applicable**

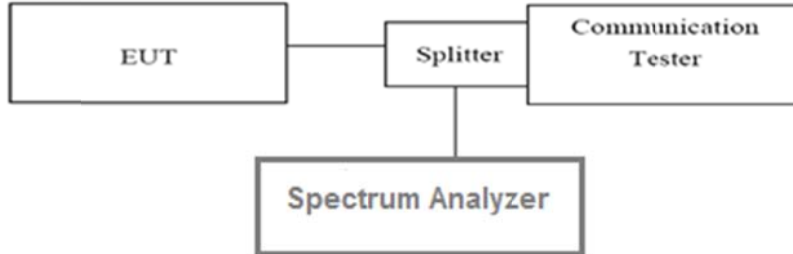
Reference Appendix A:

5.2. 99% & -26 dB Occupied Bandwidth

LIMIT

N/A

TEST CONFIGURATION



TEST PROCEDURE

1. The EUT’s output RF connector was connected with a short cable to the spectrum analyzer
2. RBW was set to about 1% of emission BW, VBW= 3 times RBW.
3. -26dBc display line was placed on the screen (or 99% bandwidth), the occupied bandwidth is the delta frequency between the two points where the display line intersects the signal trace.

TEST MODE:

Please refer to the clause 3.3

TEST RESULTS

Passed **Not Applicable**

Reference Appendix C:

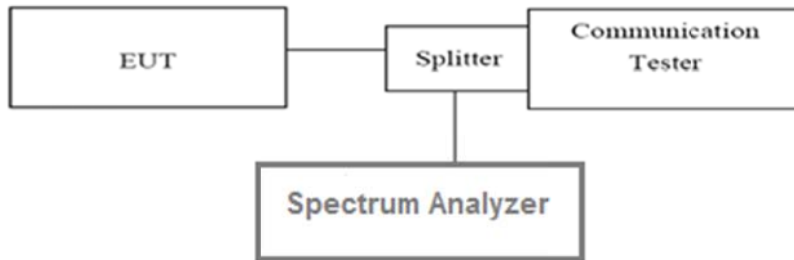
5.3. Conducted Spurious Emissions

LIMIT

Part 24.238 and Part 22.917 specify that the power of any emission outside of the authorized operating frequency ranges must be attenuated below the transmitting power (P) by a factor of at least $43 + 10 \log(P)$ dB.

The specification that emissions shall be attenuated below the transmitter power (P) by at least $43 + 10 \log(P)$ dB, translates in the relevant power range (1 to 0.001 W) to -13 dBm. At 1 W the specified minimum attenuation becomes 43 dB and relative to a 30 dBm (1 W) carrier becomes a limit of -13 dBm. At 0.001 W (0 dBm) the minimum attenuation is 13 dB, which again yields a limit of -13 dBm. In this way a translation of the specification from relative to absolute terms is carried out.

TEST CONFIGURATION



TEST PROCEDURE

1. The RF output of the transceiver was connected to a spectrum analyzer through appropriate attenuation.
2. The resolution bandwidth of the spectrum analyzer was set at 1MHz, sufficient scans were taken to show the out of band Emissions if any up to 10th harmonic.
3. For the out of band: Set the RBW= 1MHz, VBW = 3MHz, Start=30MHz, Stop= 10th harmonic.

TEST MODE:

Please refer to the clause 3.3

TEST RESULTS

Passed **Not Applicable**

Reference Appendix E:

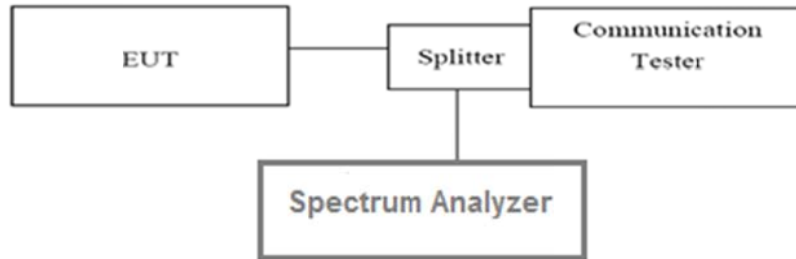
5.4. Band Edge

LIMIT

Part 24.238 and Part 22.917 specify that the power of any emission outside of the authorized operating frequency ranges must be attenuated below the transmitting power (P) by a factor of at least $43 + 10 \log(P)$ dB.

The specification that emissions shall be attenuated below the transmitter power (P) by at least $43 + 10 \log(P)$ dB, translates in the relevant power range (1 to 0.001 W) to -13 dBm. At 1 W the specified minimum attenuation becomes 43 dB and relative to a 30 dBm (1 W) carrier becomes a limit of -13 dBm. At 0.001 W (0 dBm) the minimum attenuation is 13 dB, which again yields a limit of -13 dBm. In this way a translation of the specification from relative to absolute terms is carried out.

TEST CONFIGURATION



TEST PROCEDURE

1. The RF output of the transceiver was connected to a spectrum analyzer through appropriate attenuation.
2. For the band edge: 2G: Set the RBW=3KHz, VBW = 10KHz, Sweep time= Auto

TEST MODE:

Please refer to the clause 3.3

TEST RESULTS

Passed Not Applicable

Reference Appendix D:

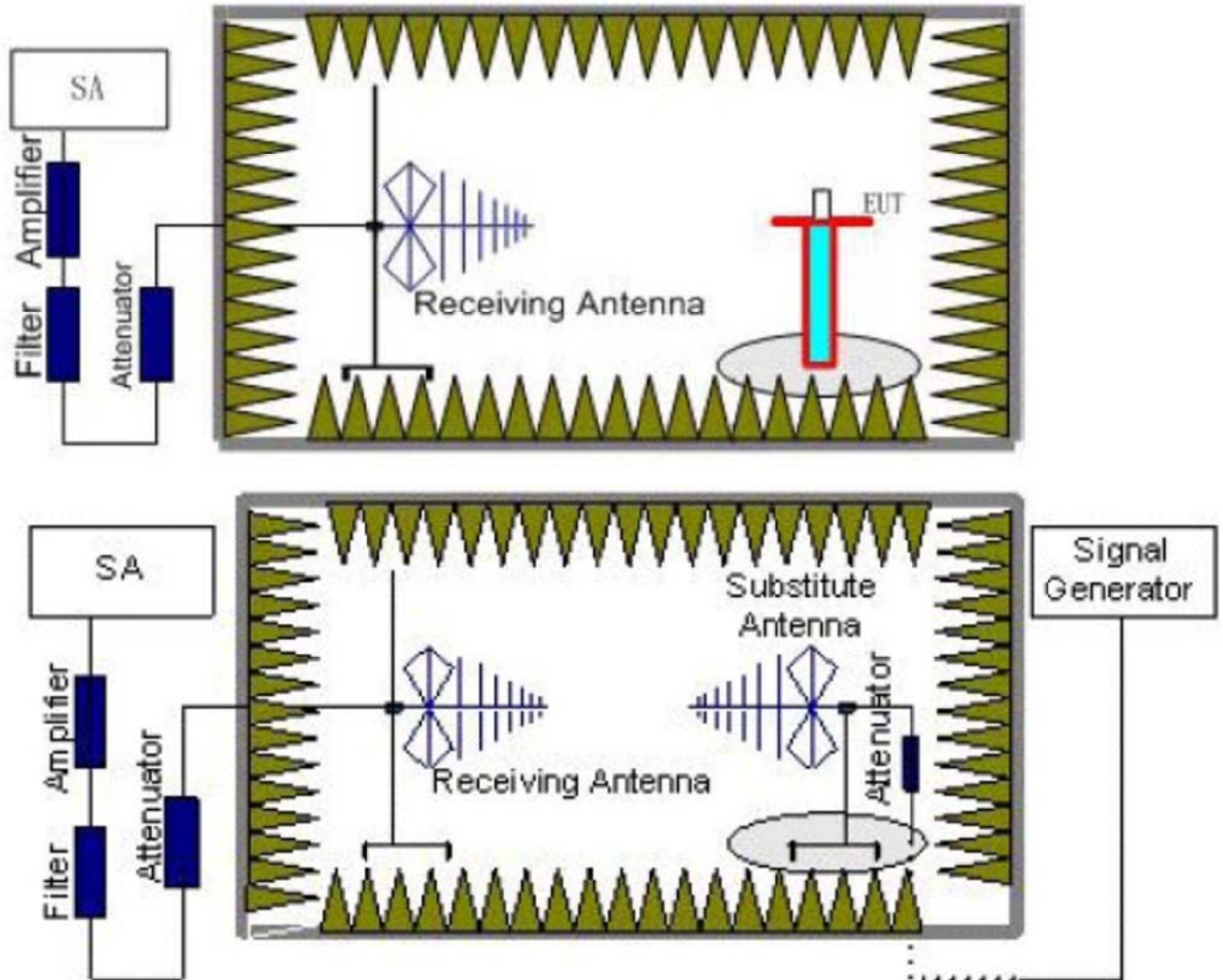
5.5. ERP and EIRP

LIMIT

GSM850: 7W ERP

PCS1900: 2W EIRP

TEST CONFIGURATION



TEST PROCEDURE

1. EUT was placed on a 0.8 meter high non-conductive stand at a 3 meter test distance from the receive antenna. A receiving antenna was placed on the antenna mast 3 meters from the EUT for emission measurements. The height of receiving antenna is 1.0m. Detected emissions were maximized at each frequency by rotating the EUT through 360° and adjusting the receiving antenna polarization. The radiated emission measurements of all transmit frequencies in three channels (High, Middle, Low) were measured with peak detector.
2. A log-periodic antenna or double-ridged waveguide horn antenna shall be substituted in place of the EUT. The log-periodic antenna will be driven by a signal generator and the level will be adjusted till the same power value on the spectrum analyzer or receiver. The level of the spurious emissions can be calculated through the level of the signal generator, cable loss, the gain of the substitution antenna and the reading of the spectrum analyzer or receiver.
3. The EUT is then put into continuously transmitting mode at its maximum power level during the test. Set Test Receiver or Spectrum RBW=1MHz, VBW=3MHz for above 1GHz and RBW=100kHz, VBW=300kHz for 30MHz to 1GHz, and the maximum value of the receiver should be recorded as (Pr).
4. The EUT shall be replaced by a substitution antenna. In the chamber, an substitution antenna for the frequency band of interest is placed at the reference point of the chamber. An RF Signal source for the frequency band of interest is connected to the substitution antenna with a cable that has been constructed to not interfere with the radiation pattern of the antenna. A power (PMea) is applied to the input of the

substitution antenna, and adjust the level of the signal generator output until the value of the receiver reach the previously recorded (Pr). The power of signal source (PMea) is recorded. The test should be performed by rotating the test item and adjusting the receiving antenna polarization.

5. A amplifier should be connected to the Signal Source output port. And the cable should be connect between the Amplifier and the Substitution Antenna. The cable loss (Pcl) ,the Substitution Antenna Gain (Ga) and the Amplifier Gain (PAg) should be recorded after test.
6. The measurement results are obtained as described below:
 $Power(EIRP)=PMea- PAg - Pcl + Ga$
 We used SMF100A microwave signal generator which signal level can up to 33dBm,so we not used power Amplifier for substitution test; The measurement results are amend as described below:
 $Power(EIRP)=PMea- Pcl + Ga$
7. This value is EIRP since the measurement is calibrated using an antenna of known gain (2.15 dBi) and known input power.
 ERP can be calculated from EIRP by subtracting the gain of the dipole, $ERP = EIRP-2.15dBi$.

TEST MODE:

Please refer to the clause 3.3

TEST RESULTS

Passed **Not Applicable**

Mode	Channel	Antenna Pol.	ERP	Limit (dBm)	Result
GSM850	128	V	30.40	38.45	Pass
		H	24.30		
	190	V	31.40		
		H	24.10		
	251	V	30.50		
		H	21.10		
GPRS850	128	V	30.10	38.45	Pass
		H	24.00		
	190	V	31.20		
		H	23.80		
	251	V	30.10		
		H	21.00		
EGPRS850	128	V	26.50	38.45	Pass
		H	20.00		
	190	V	26.90		
		H	26.40		
	251	V	25.80		
		H	19.70		

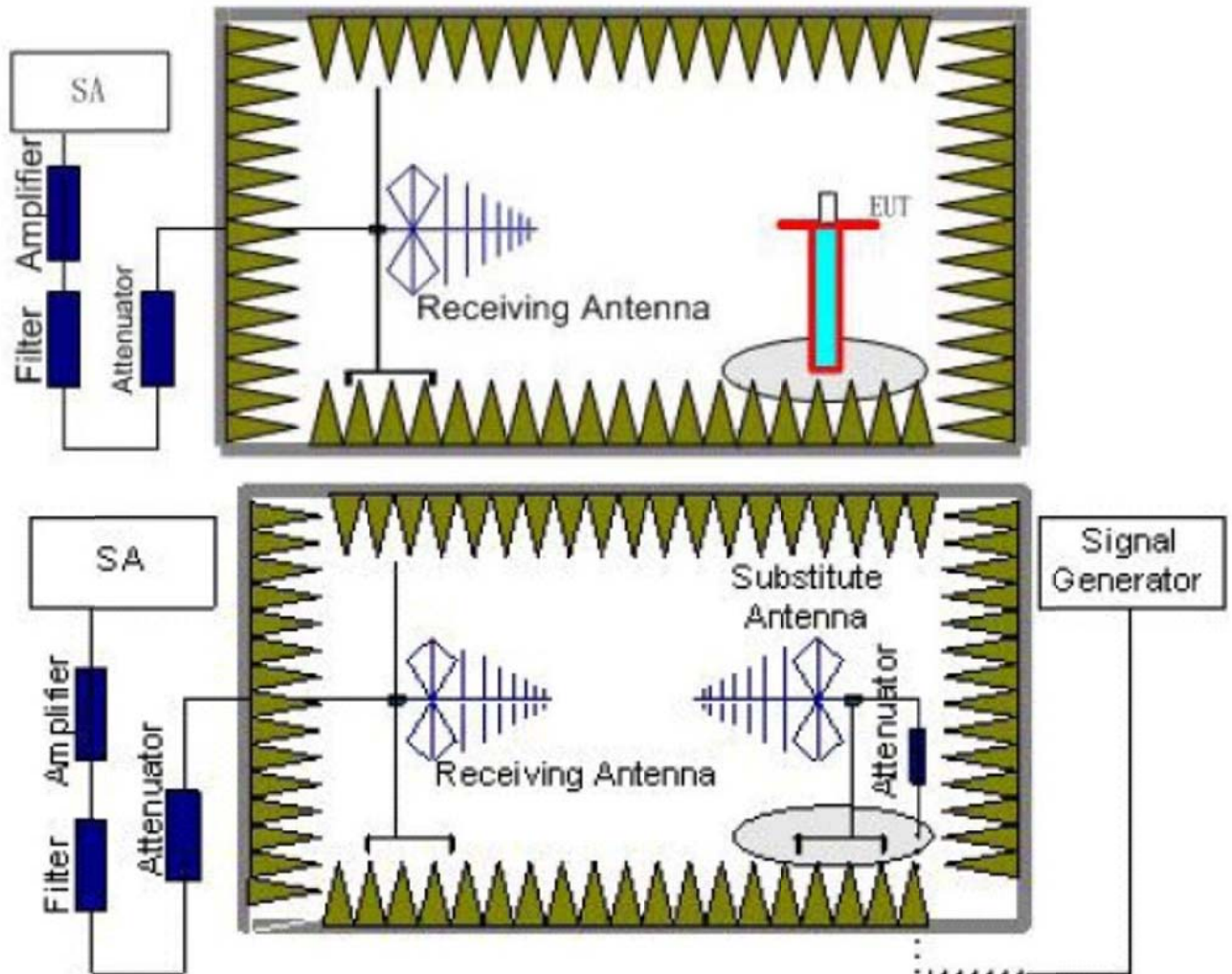
Mode	Channel	Antenna Pol.	EIRP	Limit (dBm)	Result
PCS1900	512	V	26.30	33.00	Pass
		H	27.40		
	661	V	22.10		
		H	26.80		
	810	V	26.30		
		H	29.10		
GPRS1900	512	V	26.10	33.00	Pass
		H	26.70		
	661	V	21.30		
		H	26.40		
	810	V	25.70		
		H	28.60		
EGPRS1900	512	V	23.50	33.00	Pass
		H	24.10		
	661	V	19.30		
		H	24.80		
	810	V	22.70		
		H	25.40		

5.6. Radiated Spurious Emission

LIMIT

-13dBm

TEST CONFIGURATION



TEST RESULTS

1. EUT was placed on a 0.8 meter high non-conductive stand at a 3 meter test distance from the receive antenna. A receiving antenna was placed on the antenna mast 3 meters from the EUT for emission measurements. The height of receiving antenna is 1.0m. Detected emissions were maximized at each frequency by rotating the EUT through 360° and adjusting the receiving antenna polarization. The radiated emission measurements of all transmit frequencies in three channels (High, Middle, Low) were measured with peak detector.
2. A log-periodic antenna or double-ridged waveguide horn antenna shall be substituted in place of the EUT. The log-periodic antenna will be driven by a signal generator and the level will be adjusted till the same power value on the spectrum analyzer or receiver. The level of the spurious emissions can be calculated through the level of the signal generator, cable loss, the gain of the substitution antenna and the reading of the spectrum analyzer or receiver.
3. The EUT is then put into continuously transmitting mode at its maximum power level during the test. Set Test Receiver or Spectrum RBW=1MHz, VBW=3MHz for above 1GHz and RBW=100kHz, VBW=300kHz for 30MHz to 1GHz, And the maximum value of the receiver should be recorded as (Pr).
4. The EUT shall be replaced by a substitution antenna. In the chamber, an substitution antenna for the frequency band of interest is placed at the reference point of the chamber. An RF Signal source for the frequency band of interest is connected to the substitution antenna with a cable that has been constructed to not interfere with the radiation pattern of the antenna. A power (P_{Mea}) is applied to the input of the substitution antenna, and adjust the level of the signal generator output until the value of the receiver reach the previously recorded (Pr). The power of signal source (P_{Mea}) is recorded. The test should be

performed by rotating the test item and adjusting the receiving antenna polarization.

5. A amplifier should be connected to the Signal Source output port. And the cable should be connect between the Amplifier and the Substitution Antenna. The cable loss (Pcl) ,the Substitution Antenna Gain (Ga) and the Amplifier Gain (PAg) should be recorded after test.
6. The measurement results are obtained as described below:
Power(EIRP)=PMea- PAg - Pcl + Ga
We used SMF100A micowave signal generator which signal level can up to 33dBm,so we not used power Amplifier for substitution test; The measurement results are amend as described below:
Power(EIRP)=PMea- Pcl + Ga
7. This value is EIRP since the measurement is calibrated using an antenna of known gain (2.15 dBi) and known input power.
ERP can be calculated from EIRP by subtracting the gain of the dipole, ERP = EIRP-2.15dBi.

TEST MODE:

Please refer to the clause 3.3

TEST RESULTS

Passed **Not Applicable**

Note: Worst case at GSM850/PCS1900

GSM850					
Channel	Frequency (MHz)	Spurious Emission		Limit (dBm)	Result
		Polarization	Level (dBm)		
128	200.36	Vertical	-55.95	-13.00	Pass
	259.91	V	-54.01		
	1648.51	V	-42.72		
	2472.57	V	-47.93		
	4119.70	V	-49.26		
	7025.00	V	-49.41		
	182.21	Horizontal	-50.38	-13.00	Pass
	469.24	H	-60.74		
	1648.51	H	-41.78		
	2475.28	H	-48.47		
	4119.70	H	-48.44		
	6824.17	H	-51.44		
190	182.21	Vertical	-56.78	-13.00	Pass
	598.09	V	-56.12		
	1674.06	V	-44.87		
	2510.89	V	-45.77		
	4179.88	V	-47.68		
	6913.82	V	-51.28		
	182.21	Horizontal	-56.67	-13.00	Pass
	469.24	H	-61.67		
	1674.06	H	-43.35		
	2586.49	H	-44.73		
	4179.88	H	-46.65		
	7390.79	H	-49.55		
251	259.91	Vertical	-57.05	-13.00	Pass
	469.24	V	-60.43		
	1698.14	V	-45.26		
	2580.81	V	-42.73		
	4240.94	V	-48.60		
	6590.73	V	-51.49		
	182.21	Horizontal	-51.80	-13.00	Pass
	469.24	H	-60.73		
	1698.14	H	-45.11		
	2547.01	H	-47.95		
	4240.94	H	-49.74		
	6774.86	H	-50.59		

Remark:

1. The emission behaviour belongs to narrowband spurious emission.
2. The emission levels of not record in the report are very lower than the limit and not show in test report.

PCS1900					
Channel	Frequency (MHz)	Spurious Emission		Limit (dBm)	Result
		Polarization	Level (dBm)		
512	200.36	Vertical	-65.28	-13.00	Pass
	259.91	V	-60.69		
	1260.88	V	-56.00		
	2395.03	V	-51.39		
	4119.70	V	-53.73		
	5554.08	V	-47.99		
	182.21	Horizontal	-57.47	-13.00	Pass
	469.24	H	-59.26		
	1258.11	H	-54.36		
	2410.87	H	-51.28		
	5554.08	H	-46.05		
	9253.71	H	-41.43		
661	200.36	Vertical	-63.34	-13.00	Pass
	259.91	V	-60.83		
	1095.47	V	-56.41		
	2171.94	V	-51.70		
	5643.40	V	-46.98		
	9402.51	V	-42.74		
	182.21	Horizontal	-55.62	-13.00	Pass
	469.24	H	-60.02		
	1258.11	H	-51.74		
	2580.81	H	-49.49		
	5643.40	H	-52.72		
	9402.51	H	-43.09		
810	259.91	Vertical	-57.59	-13.00	Pass
	756.99	V	-54.85		
	1295.99	V	-55.03		
	2317.38	V	-53.49		
	3820.45	V	-55.69		
	5725.84	V	-47.36		
	182.21	Horizontal	-60.49	-13.00	Pass
	469.24	H	-61.07		
	1411.94	H	-55.91		
	2413.52	H	-51.59		
	3820.45	H	-56.81		
	6076.63	H	-52.47		

Remark:

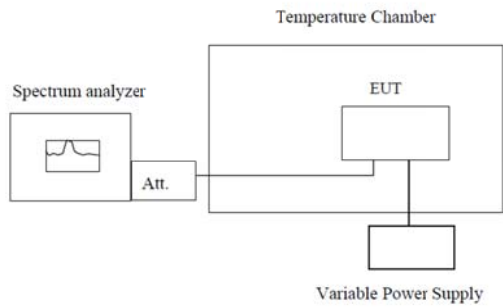
1. The emission behaviour belongs to narrowband spurious emission.
2. The emission levels of not record in the report are very lower than the limit and not show in test report.

5.7. Frequency stability V.S. Temperature measurement

LIMIT

2.5ppm

TEST CONFIGURATION



Note : Measurement setup for testing on Antenna connector

TEST PROCEDURE

1. The equipment under test was connected to an external DC power supply and input rated voltage.
2. RF output was connected to a frequency counter or spectrum analyzer via feed through attenuators.
3. The EUT was placed inside the temperature chamber.
4. Set the spectrum analyzer RBW low enough to obtain the desired frequency resolution and measure EUT 25°C operating frequency as reference frequency.
5. Turn EUT off and set the chamber temperature to -30°C . After the temperature stabilized for approximately 30 minutes recorded the frequency.
6. Repeat step measure with 10°C increased per stage until the highest temperature of $+50^{\circ}\text{C}$ reached.

TEST MODE:

Please refer to the clause 3.3

TEST RESULTS

Passed **Not Applicable**

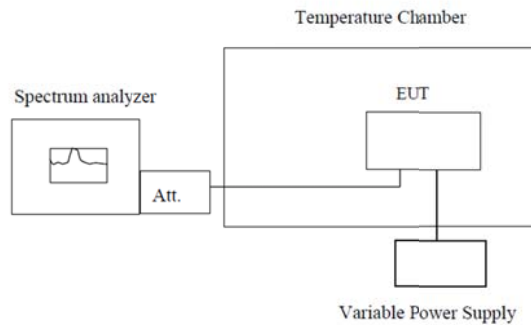
Reference Appendix F:

5.8. Frequency stability V.S. Voltage measurement

LIMIT

2.5ppm

TEST CONFIGURATION



Note : Measurement setup for testing on Antenna connector

TEST PROCEDURE

1. Set chamber temperature to 25°C. Use a variable DC power source to power the EUT and set the voltage to rated voltage.
2. Set the spectrum analyzer RBW low enough to obtain the desired frequency resolution and record the frequency.
3. Reduce the input voltage to specified extreme voltage variation (+/- 15%) and endpoint, record the maximum frequency change.

TEST MODE:

Please refer to the clause 3.3

TEST RESULTS

Passed **Not Applicable**

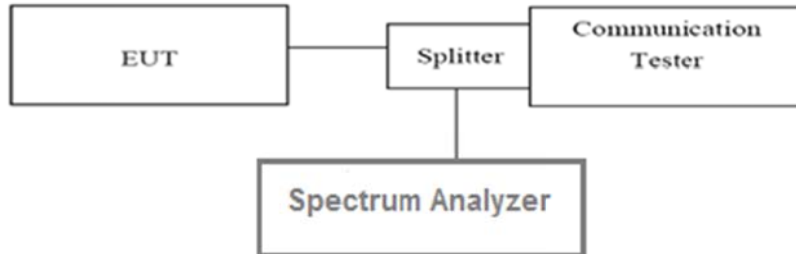
Reference Appendix F:

5.9. Peak-Average Ratio

LIMIT

13dB

TEST CONFIGURATION



TEST PROCEDURE

According with KDB 971168

1. The signal analyzer' s CCDF measurement profile is enabled
2. Frequency = carrier center frequency
3. Measurement BW > Emission bandwidth of signal
4. The signal analyzer was set to collect one million samples to generate the CCDF curve
5. The measurement interval was set depending on the type of signal analyzed. For continuous signals (>98% duty cycle), the measurement interval was set to 1ms. For burst transmissions, the spectrum analyzer is set to use an internal " RF Burst" trigger that is synced with an incoming pulse and the measurement interval is set to less than the duration of the " on time" of one burst to ensure that energy is only captured during a time in which the transmitter is operating at maximum power

TEST MODE:

Please refer to the clause 3.3

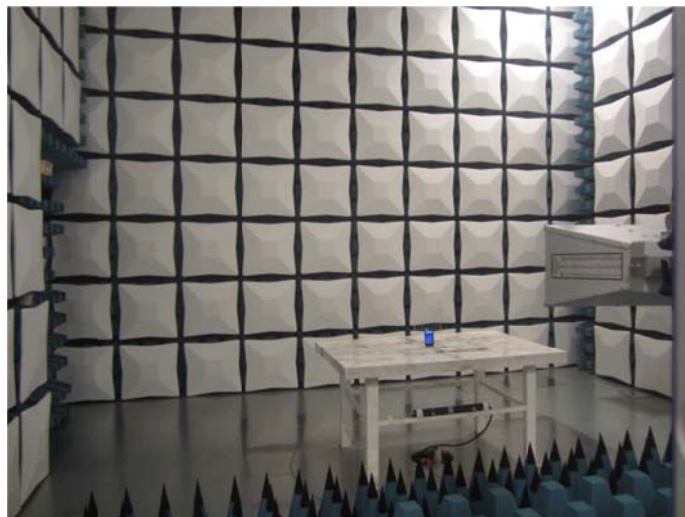
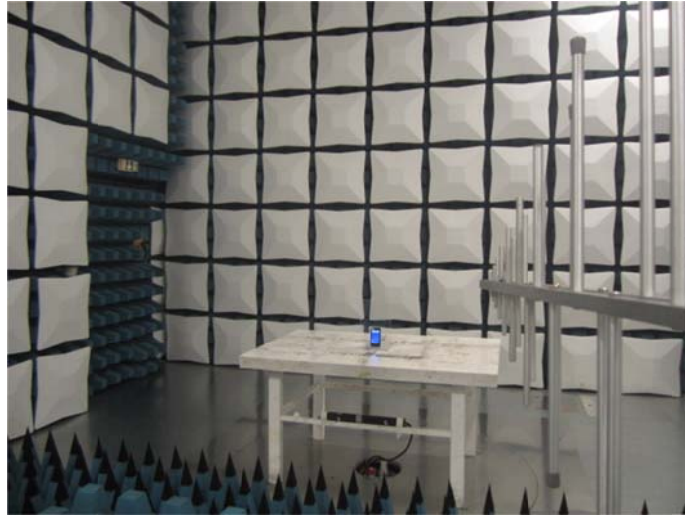
TEST RESULTS

Passed Not Applicable

Reference Appendix B:

6. Test Setup Photos of the EUT

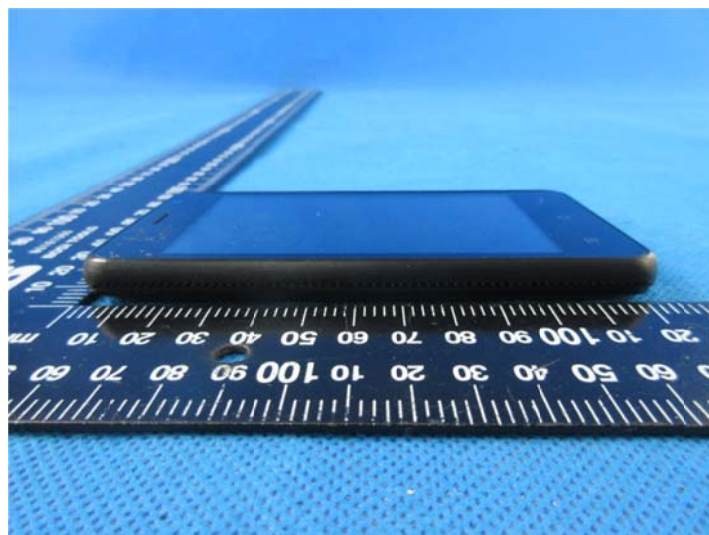
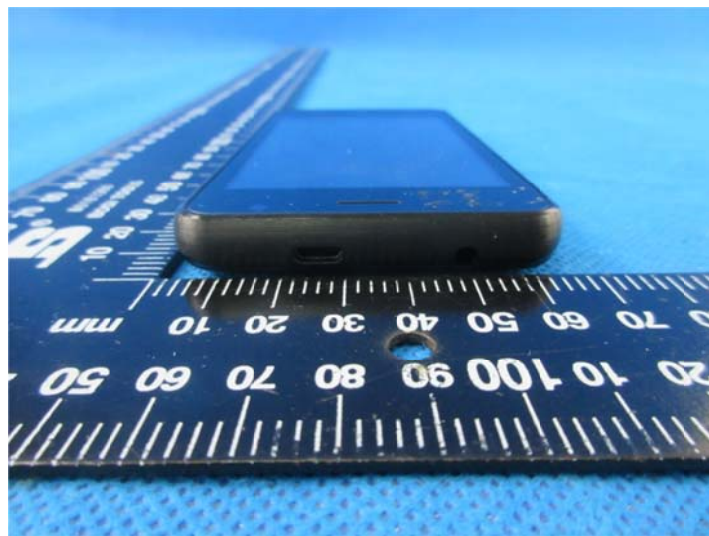
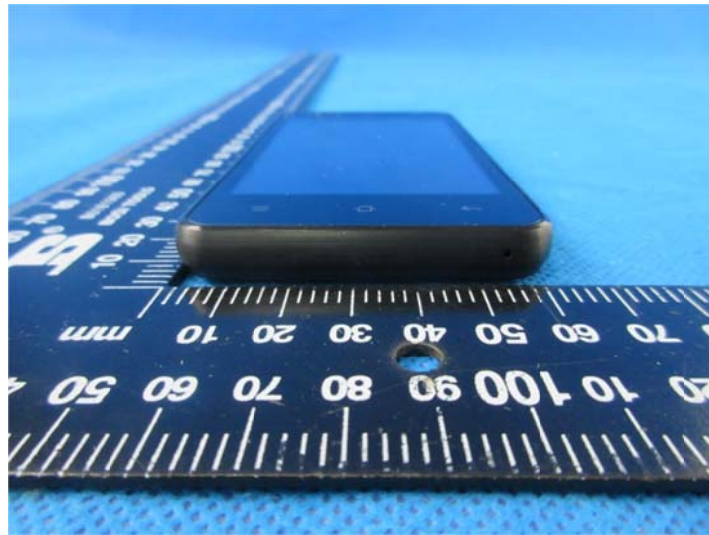
Radiated emission:

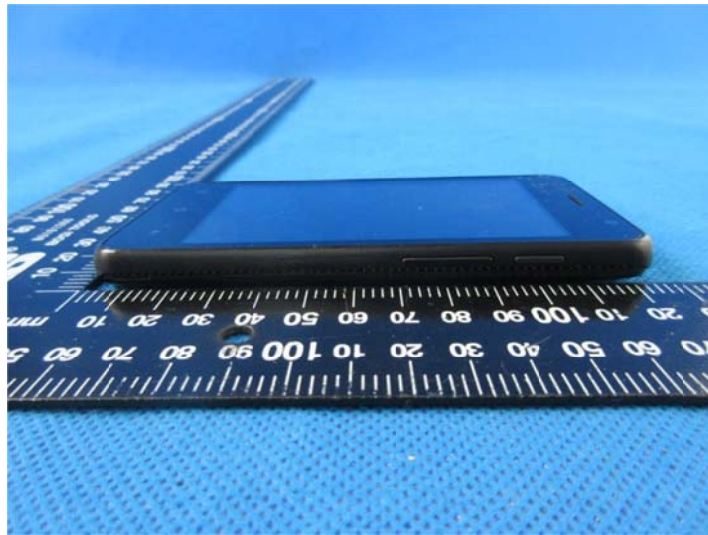


7. External and Internal Photos of the EUT

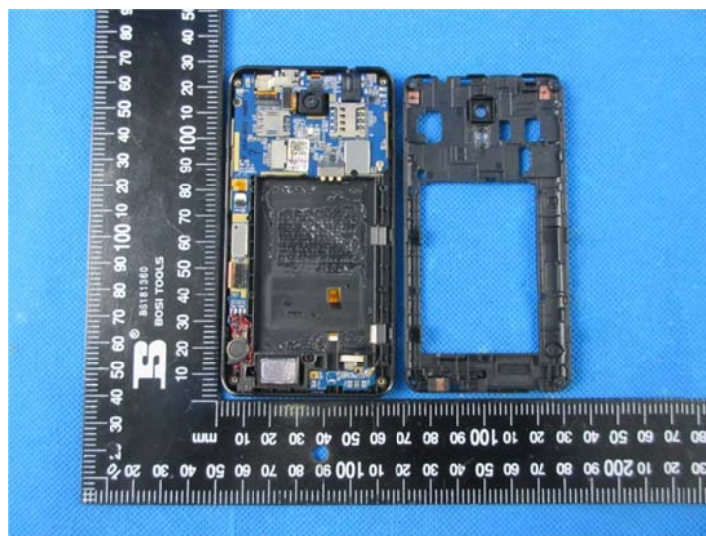
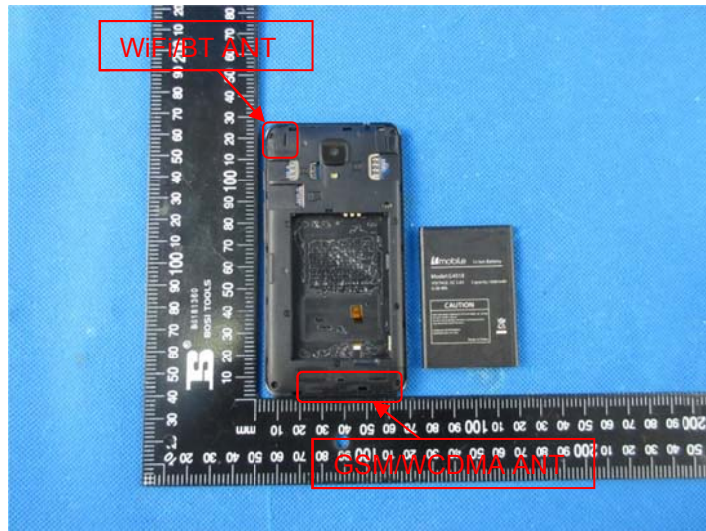
External photos of the EUT

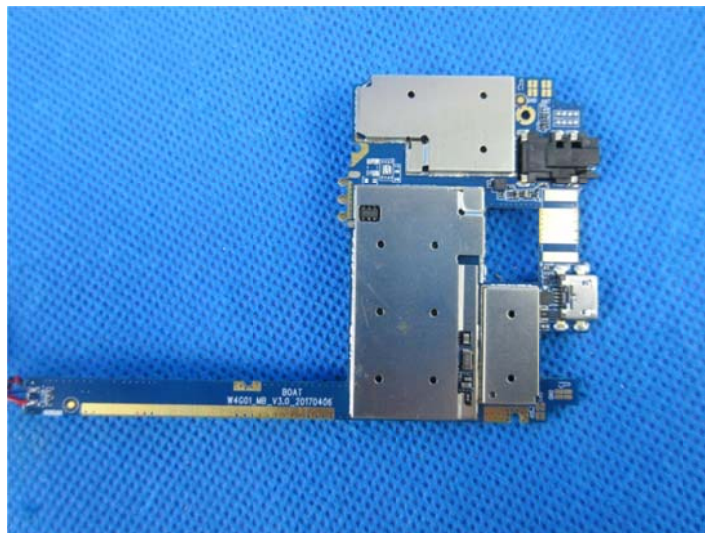
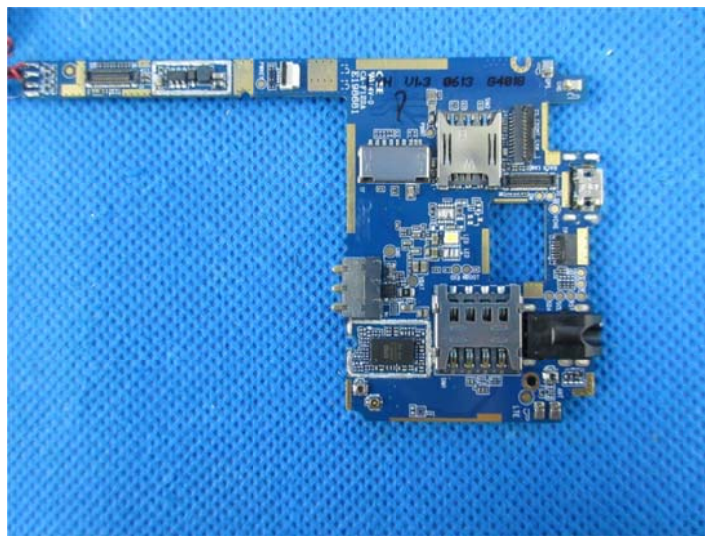


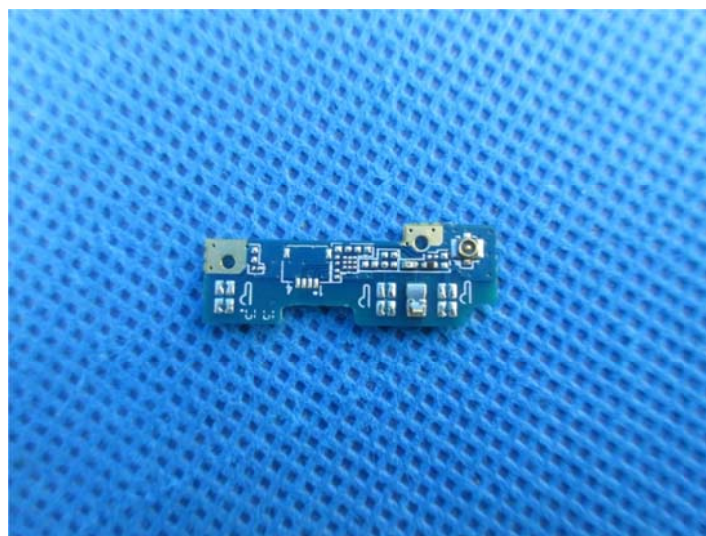




Internal photos of the EUT









.....End of Report.....

Appendix A: Conducted Output Power

Test Result

Band	Channel	PCL	Power(dBm)	Limit(dBm)	Verdict
GSM850	128	5	31.78	38.5	PASS
GSM850	190	5	31.86	38.5	PASS
GSM850	251	5	31.83	38.5	PASS
GSM1900	512	0	30.88	33	PASS
GSM1900	661	0	30.50	33	PASS
GSM1900	810	0	30.23	33	PASS

Band	Channel	PCL	Slot	Power(dBm)	Limit(dBm)	Verdict
GPRS850	128	5	1	31.63	38.5	PASS
GPRS850	128	5	2	31.19	38.5	PASS
GPRS850	128	5	3	29.28	38.5	PASS
GPRS850	128	5	4	27.66	38.5	PASS
GPRS850	190	5	1	31.72	38.5	PASS
GPRS850	190	5	2	31.18	38.5	PASS
GPRS850	190	5	3	29.39	38.5	PASS
GPRS850	190	5	4	27.80	38.5	PASS
GPRS850	251	5	1	31.70	38.5	PASS
GPRS850	251	5	2	31.06	38.5	PASS
GPRS850	251	5	3	29.59	38.5	PASS
GPRS850	251	5	4	27.81	38.5	PASS
GPRS1900	512	0	1	30.78	33	PASS
GPRS1900	512	0	2	30.16	33	PASS
GPRS1900	512	0	3	28.55	33	PASS
GPRS1900	512	0	4	26.84	33	PASS
GPRS1900	661	0	1	30.39	33	PASS
GPRS1900	661	0	2	29.55	33	PASS
GPRS1900	661	0	3	28.40	33	PASS
GPRS1900	661	0	4	26.46	33	PASS
GPRS1900	810	0	1	30.12	33	PASS
GPRS1900	810	0	2	29.50	33	PASS
GPRS1900	810	0	3	27.91	33	PASS
GPRS1900	810	0	4	26.18	33	PASS

Band	Channel	PCL	Slot	Power(dBm)	Limit(dBm)	Verdict
EGPRS850	128	8	1	25.42	38.5	PASS
EGPRS850	128	8	2	25.09	38.5	PASS
EGPRS850	128	8	3	23.43	38.5	PASS
EGPRS850	128	8	4	21.68	38.5	PASS
EGPRS850	190	8	1	25.61	38.5	PASS
EGPRS850	190	8	2	25.20	38.5	PASS
EGPRS850	190	8	3	23.56	38.5	PASS
EGPRS850	190	8	4	21.89	38.5	PASS
EGPRS850	251	8	1	25.73	38.5	PASS
EGPRS850	251	8	2	25.04	38.5	PASS
EGPRS850	251	8	3	23.62	38.5	PASS
EGPRS850	251	8	4	22.48	38.5	PASS
EGPRS1900	512	2	1	25.99	33	PASS
EGPRS1900	512	2	2	25.28	33	PASS
EGPRS1900	512	2	3	23.17	33	PASS
EGPRS1900	512	2	4	21.57	33	PASS
EGPRS1900	661	2	1	25.70	33	PASS
EGPRS1900	661	2	2	24.86	33	PASS
EGPRS1900	661	2	3	22.92	33	PASS
EGPRS1900	661	2	4	21.26	33	PASS
EGPRS1900	810	2	1	25.43	33	PASS
EGPRS1900	810	2	2	24.56	33	PASS
EGPRS1900	810	2	3	22.65	33	PASS
EGPRS1900	810	2	4	20.82	33	PASS

Appendix B: Peak-to-Average Ratio

Test Result

Band	Channel	Peak-to-Average Ratio(dB)	Limit(dBm)	Verdict
GSM850	128	2.65	13	PASS
GSM850	190	2.64	13	PASS
GSM850	251	2.65	13	PASS
GPRS850	128	2.64	13	PASS
GPRS850	190	2.65	13	PASS
GPRS850	251	2.64	13	PASS
EGPRS850	128	5.51	13	PASS
EGPRS850	190	5.48	13	PASS
EGPRS850	251	5.49	13	PASS
GSM1900	512	2.75	13	PASS
GSM1900	661	2.75	13	PASS
GSM1900	810	2.75	13	PASS
GPRS1900	512	2.76	13	PASS
GPRS1900	661	2.75	13	PASS
GPRS1900	810	2.74	13	PASS
EGPRS1900	512	6.00	13	PASS
EGPRS1900	661	6.04	13	PASS
EGPRS1900	810	6.11	13	PASS

Test Graphs

GSM850_128



GSM850_190



GSM850_251



GPRS850_128



GPRS850_190



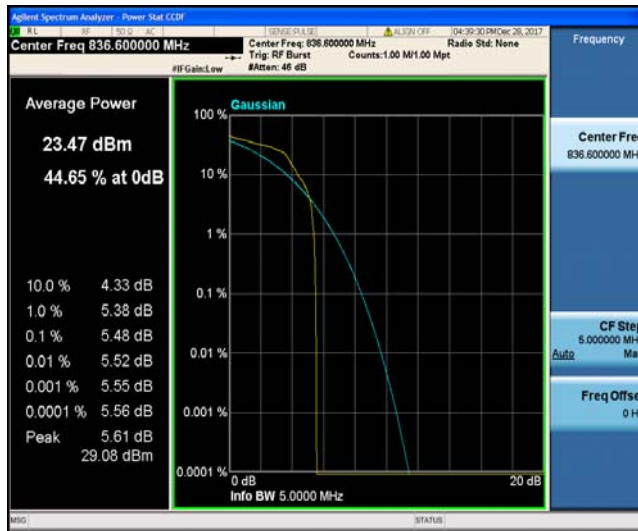
GPRS850_251



EGPRS850_128



EGPRS850_190



EGPRS850_251



GSM1900_512



GSM1900_661



GSM1900_810



GPRS1900_512



GPRS1900_661



GPRS1900_810



EGPRS1900_512



EGPRS1900_661



EGPRS1900_810



Appendix C: 26dB Bandwidth and Occupied Bandwidth

Test Result

Band	Channel	Occupied Bandwidth (kHz)	26dB Bandwidth (kHz)	Limit(kHz)	Verdict
GSM850	128	244.66	313.8	---	PASS
GSM850	190	245.23	315.6	---	PASS
GSM850	251	247.09	316.0	---	PASS
GPRS850	128	246.73	316.9	---	PASS
GPRS850	190	243.34	316.9	---	PASS
GPRS850	251	244.56	322.8	---	PASS
EGPRS850	128	247.96	317.9	---	PASS
EGPRS850	190	248.34	316.6	---	PASS
EGPRS850	251	250.98	315.8	---	PASS
GSM1900	512	244.63	316.6	---	PASS
GSM1900	661	243.54	312.0	---	PASS
GSM1900	810	244.52	318.9	---	PASS
GPRS1900	512	243.65	311.9	---	PASS
GPRS1900	661	246.96	317.0	---	PASS
GPRS1900	810	245.13	316.3	---	PASS
EGPRS1900	512	241.57	307.3	---	PASS
EGPRS1900	661	243.63	313.9	---	PASS
EGPRS1900	810	244.89	307.4	---	PASS

Test Graphs

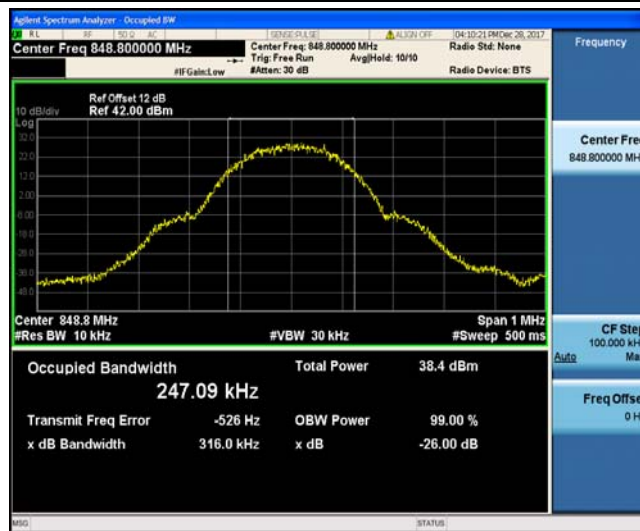
GSM850_128



GSM850_190



GSM850_251



GPRS850_128



GPRS850_190



GPRS850_251



EGPRS850_128



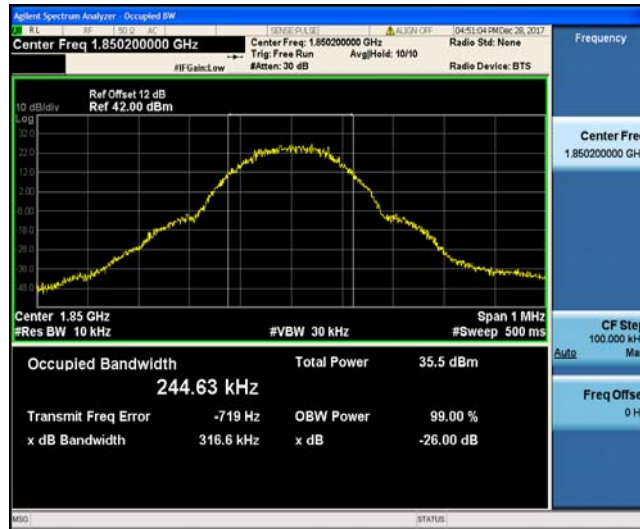
EGPRS850_190



EGPRS850_251



GSM1900_512



GSM1900_661



GSM1900_810



GPRS1900_512



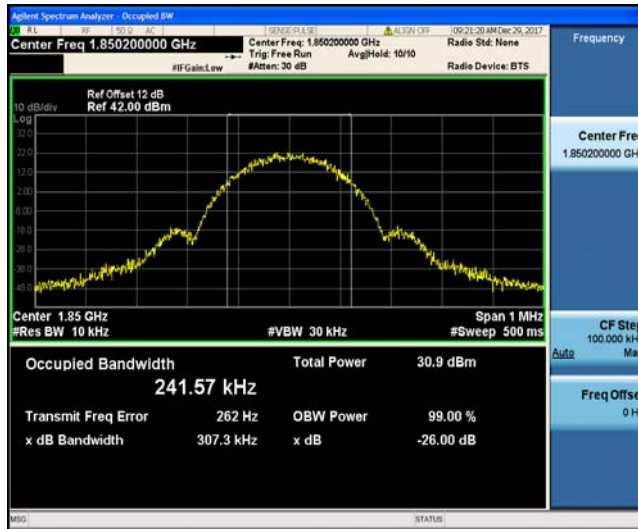
GPRS1900_661



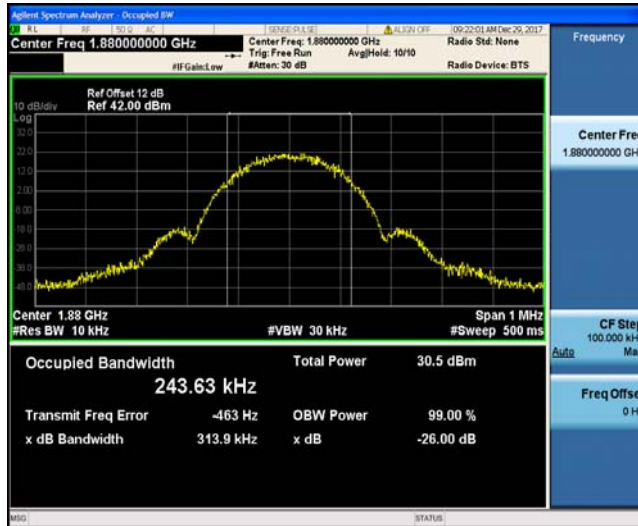
GPRS1900_810



EGPRS1900_512



EGPRS1900_661



EGPRS1900_810



Appendix D: Band Edge

Test Result

Band	Channel	Value(dBm)	Limit(dBm)	Verdict
GSM850	128	-16.39	-13	PASS
GSM850	251	-17.11	-13	PASS
GPRS850	128	-18.19	-13	PASS
GPRS850	251	-18.42	-13	PASS
EGPRS850	128	-29.19	-13	PASS
EGPRS850	251	-27.62	-13	PASS
GSM1900	512	-18.07	-13	PASS
GSM1900	810	-19.99	-13	PASS
GPRS1900	512	-21.05	-13	PASS
GPRS1900	810	-21.64	-13	PASS
EGPRS1900	512	-28.83	-13	PASS
EGPRS1900	810	-27.83	-13	PASS

Test Graphs

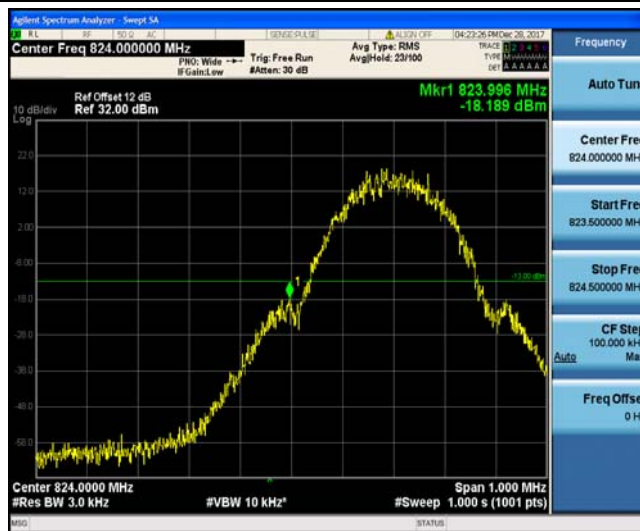
GSM850_128



GSM850_251



GPRS850_128



GPRS850_251



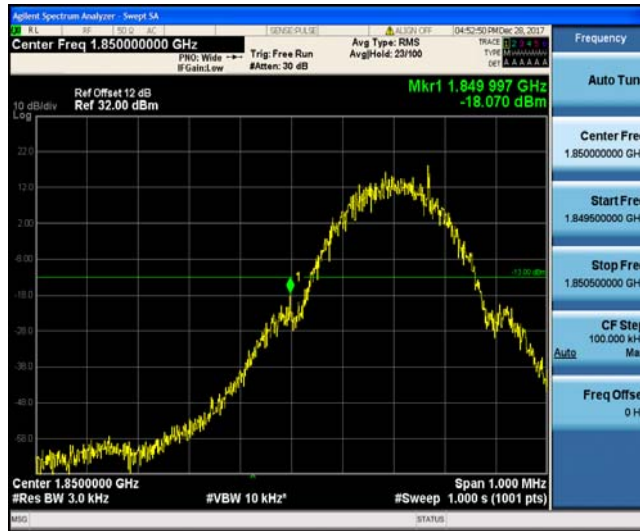
EGPRS850_128



EGPRS850_251



GSM1900_512



GSM1900_810



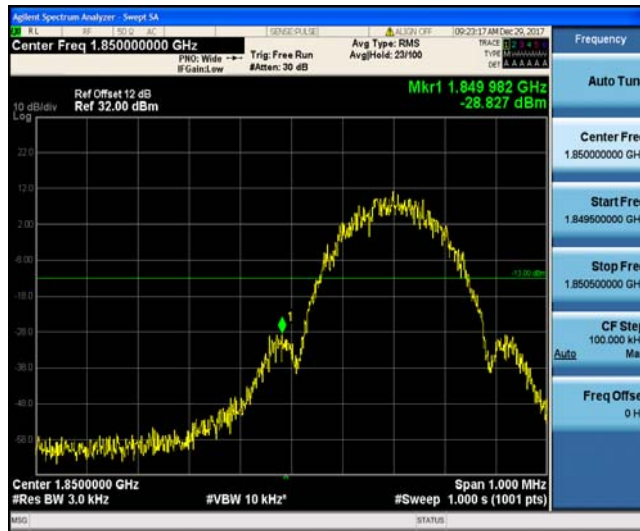
GPRS1900_512



GPRS1900_810



EGPRS1900_512



EGPRS1900_810



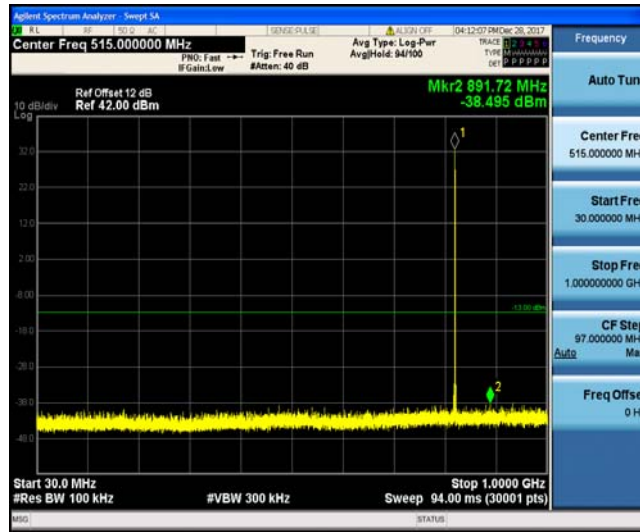
Appendix E: Conducted Spurious Emission

Test Result

Band	Channel	Frequency Rang(Mhz)	Value(dBm)	Limit(dBm)	Verdict
GSM850	128	30~1000	-38.50	-13	PASS
GSM850	128	1000~10000	-25.62	-13	PASS
GSM850	190	30~1000	-37.87	-13	PASS
GSM850	190	1000~10000	-25.78	-13	PASS
GSM850	251	30~1000	-38.72	-13	PASS
GSM850	251	1000~10000	-25.29	-13	PASS
GPRS850	128	30~1000	-38.65	-13	PASS
GPRS850	128	1000~10000	-25.23	-13	PASS
GPRS850	190	30~1000	-38.05	-13	PASS
GPRS850	190	1000~10000	-25.83	-13	PASS
GPRS850	251	30~1000	-38.79	-13	PASS
GPRS850	251	1000~10000	-25.29	-13	PASS
EGPRS850	128	30~1000	-38.47	-13	PASS
EGPRS850	128	1000~10000	-25.68	-13	PASS
EGPRS850	190	30~1000	-37.99	-13	PASS
EGPRS850	190	1000~10000	-25.58	-13	PASS
EGPRS850	251	30~1000	-38.54	-13	PASS
EGPRS850	251	1000~10000	-25.41	-13	PASS
GSM1900	512	30~1000	-39.05	-13	PASS
GSM1900	512	1000~20000	-19.15	-13	PASS
GSM1900	661	30~1000	-38.86	-13	PASS
GSM1900	661	1000~20000	-19.25	-13	PASS
GSM1900	810	30~1000	-38.00	-13	PASS
GSM1900	810	1000~20000	-19.25	-13	PASS
GPRS1900	512	30~1000	-38.26	-13	PASS
GPRS1900	512	1000~20000	-19.19	-13	PASS
GPRS1900	661	30~1000	-38.20	-13	PASS
GPRS1900	661	1000~20000	-19.65	-13	PASS
GPRS1900	810	30~1000	-38.33	-13	PASS
GPRS1900	810	1000~20000	-20.05	-13	PASS
EGPRS1900	512	30~1000	-38.68	-13	PASS
EGPRS1900	512	1000~20000	-18.38	-13	PASS
EGPRS1900	661	30~1000	-38.83	-13	PASS
EGPRS1900	661	1000~20000	-19.18	-13	PASS
EGPRS1900	810	30~1000	-37.94	-13	PASS
EGPRS1900	810	1000~20000	-19.42	-13	PASS

Test Graphs

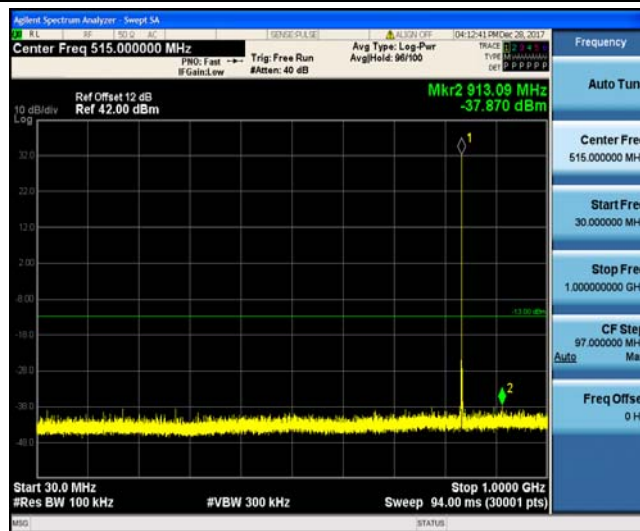
GSM850_128



GSM850_128



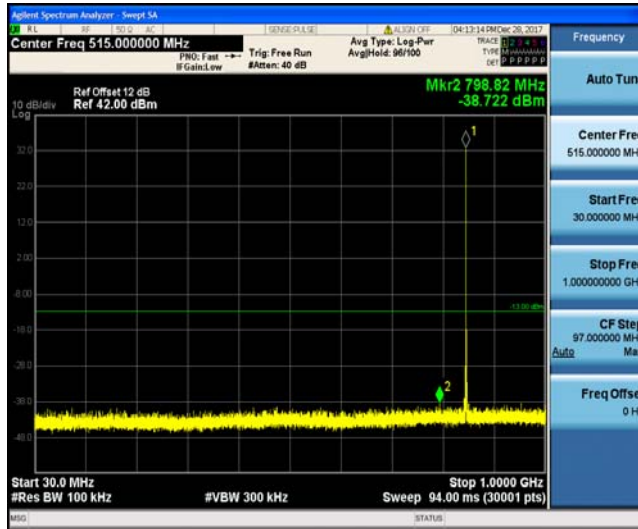
GSM850_190



GSM850_190



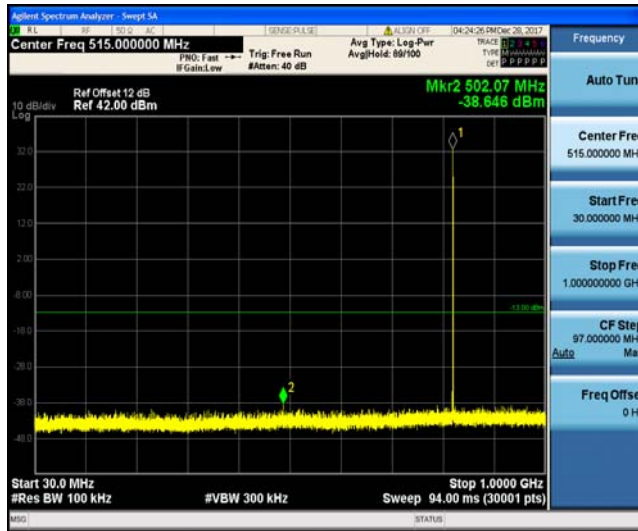
GSM850_251



GSM850_251



GPRS850_128



GPRS850_128



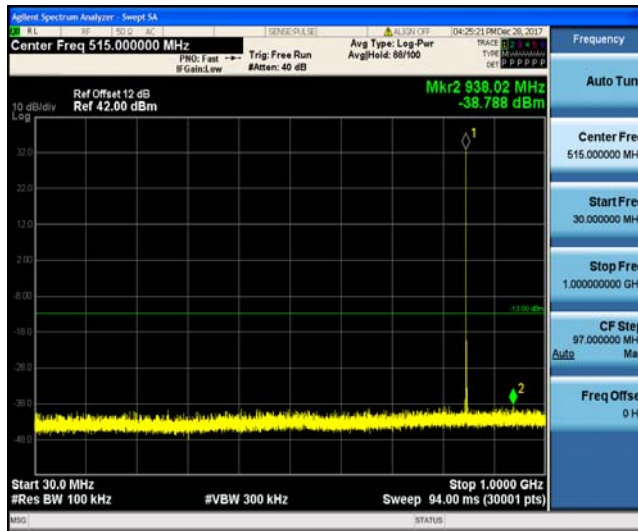
GPRS850_190



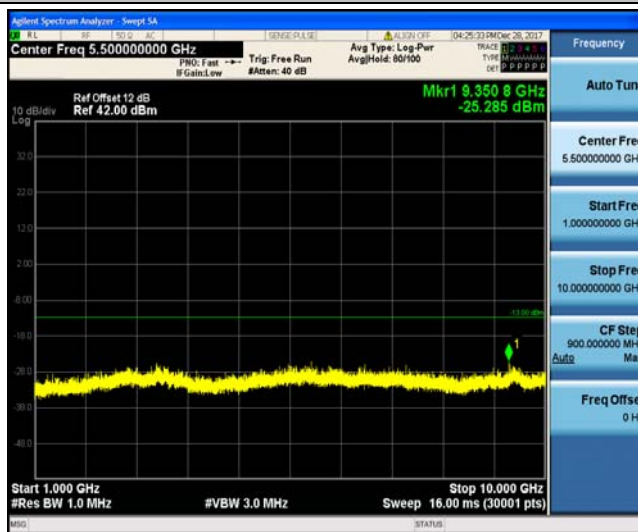
GPRS850_190



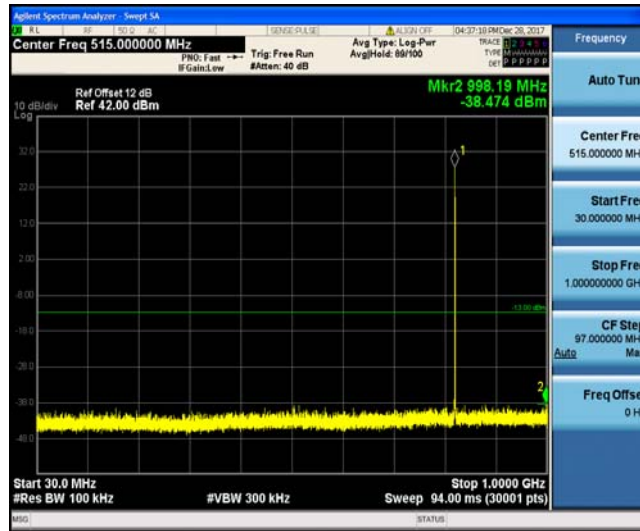
GPRS850_251



GPRS850_251



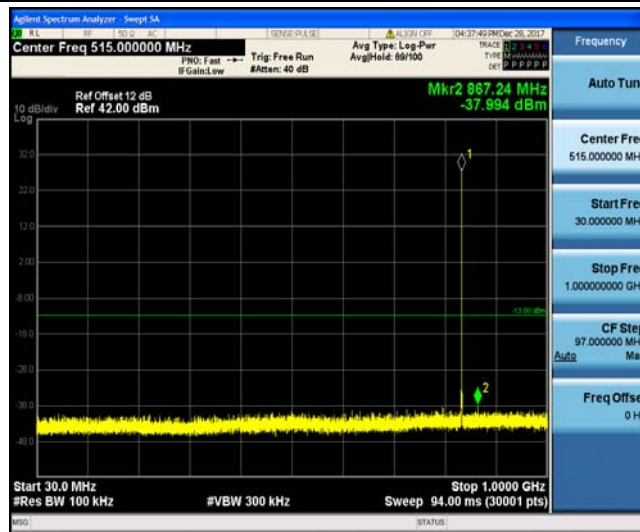
EGPRS850_128



EGPRS850_128



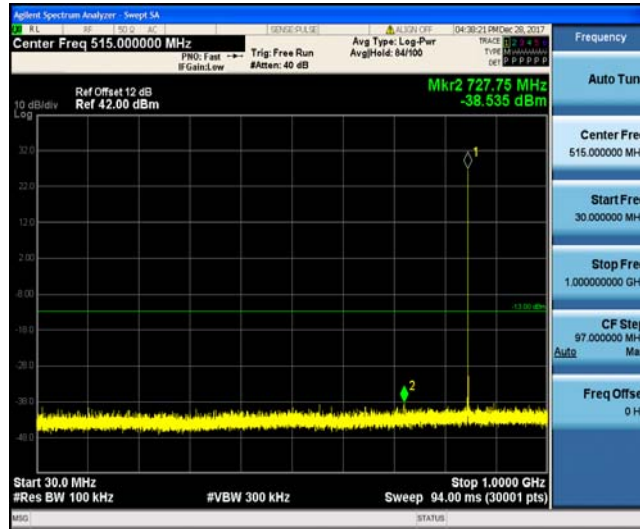
EGPRS850_190



EGPRS850_190



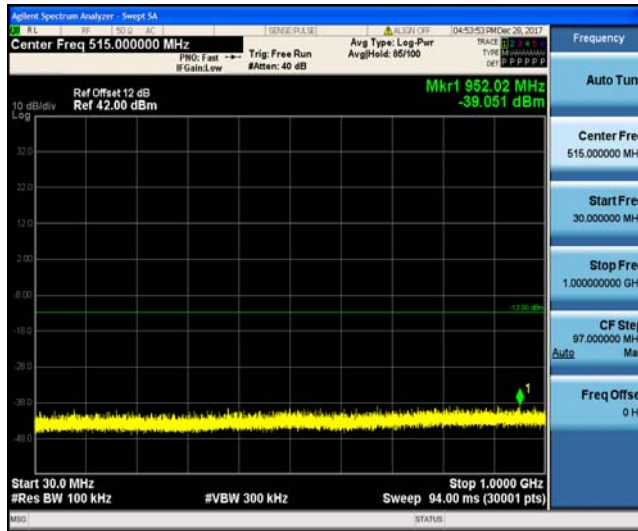
EGPRS850_251



EGPRS850_251



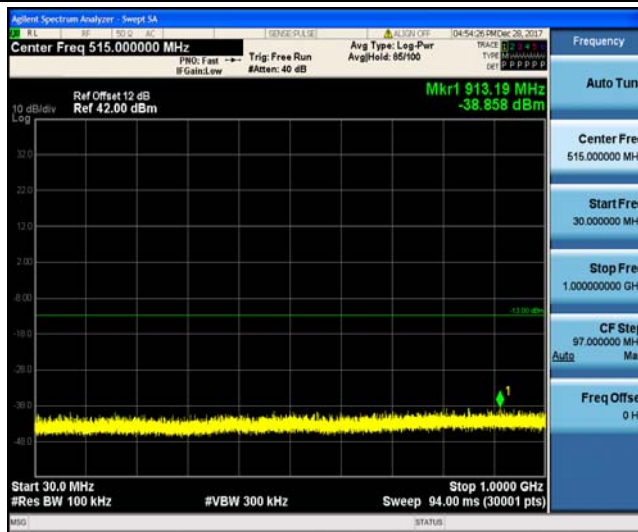
GSM1900_512



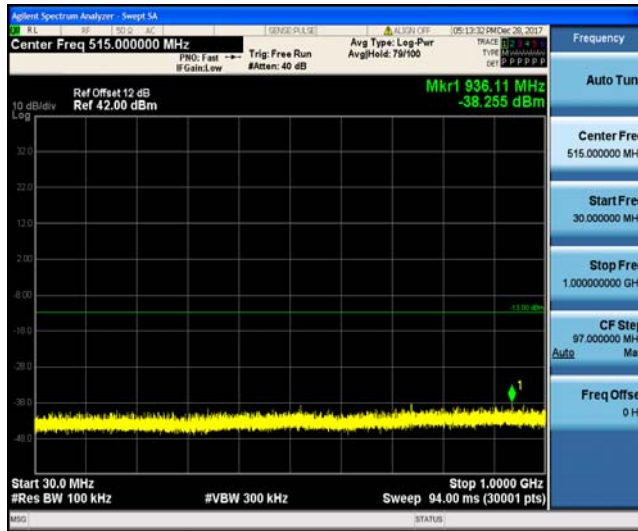
GSM1900_512



GSM1900_661



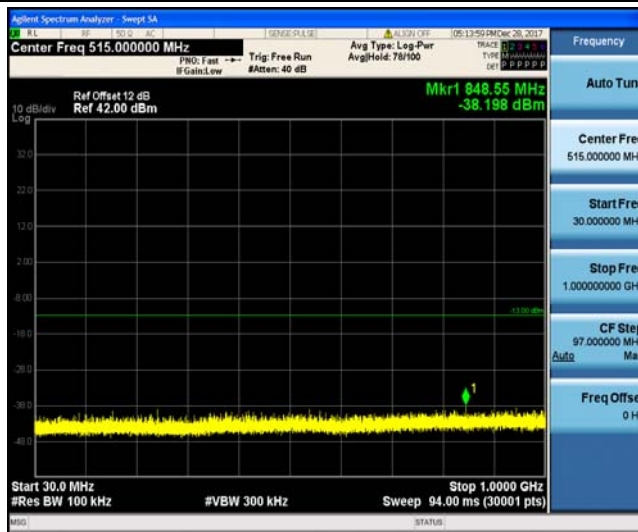
GPRS1900_512



GPRS1900_512



GPRS1900_661



GPRS1900_661



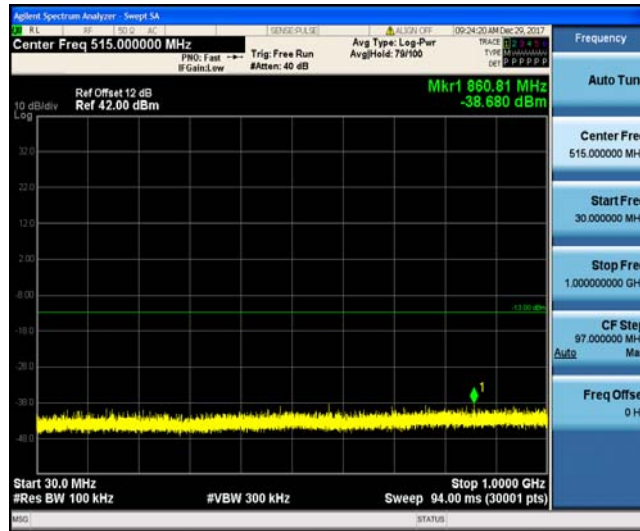
GPRS1900_810



GPRS1900_810



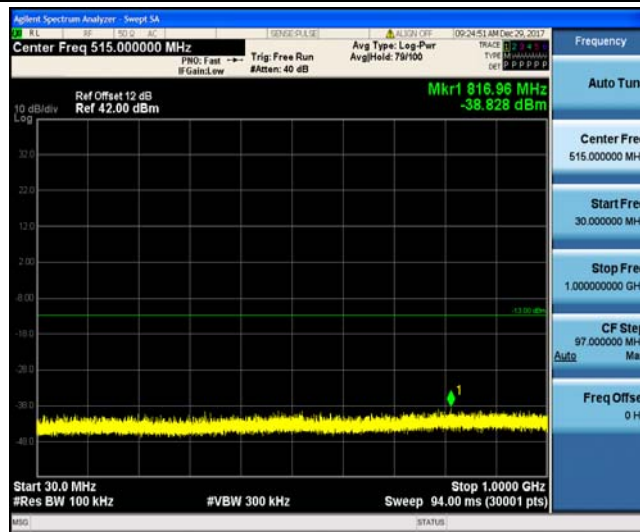
EGPRS1900_512



EGPRS1900_512



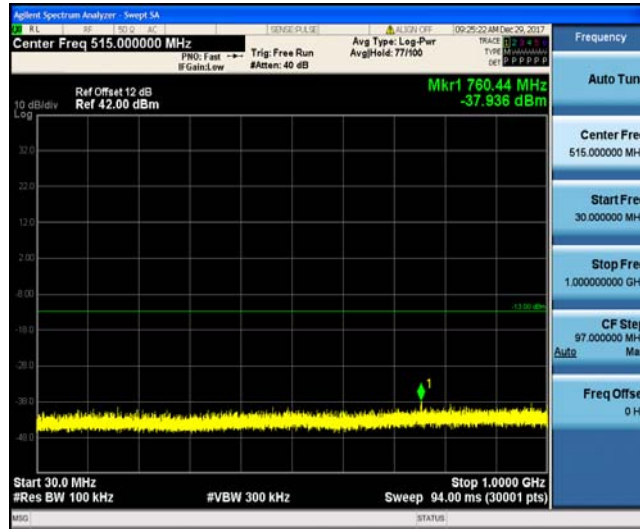
EGPRS1900_661



EGPRS1900_661



EGPRS1900_810



EGPRS1900_810



Appendix F: Frequency Stability

Test Result

Voltage							
Band	Channel	Voltage (Vdc)	Temperature (°C)	Deviation (Hz)	Deviation (ppm)	Limit (ppm)	Verdict
GSM850	128	VL	TN	10.33	0.012535	2.5	PASS
GSM850	128	VN	TN	11.20	0.013593	2.5	PASS
GSM850	128	VH	TN	8.39	0.010185	2.5	PASS
GSM850	190	VL	TN	7.20	0.008606	2.5	PASS
GSM850	190	VN	TN	6.39	0.007641	2.5	PASS
GSM850	190	VH	TN	6.62	0.007911	2.5	PASS
GSM850	251	VL	TN	6.62	0.007798	2.5	PASS
GSM850	251	VN	TN	0.45	0.000533	2.5	PASS
GSM850	251	VH	TN	1.97	0.002320	2.5	PASS
GPRS850	128	VL	TN	9.52	0.011556	2.5	PASS
GPRS850	128	VN	TN	8.78	0.010655	2.5	PASS
GPRS850	128	VH	TN	7.75	0.009401	2.5	PASS
GPRS850	190	VL	TN	8.88	0.010613	2.5	PASS
GPRS850	190	VN	TN	8.33	0.009957	2.5	PASS
GPRS850	190	VH	TN	9.46	0.011307	2.5	PASS
GPRS850	251	VL	TN	8.43	0.009928	2.5	PASS
GPRS850	251	VN	TN	-0.55	-0.000647	2.5	PASS
GPRS850	251	VH	TN	1.58	0.001864	2.5	PASS
EGPRS850	128	VL	TN	10.46	0.012692	2.5	PASS
EGPRS850	128	VN	TN	10.33	0.012535	2.5	PASS
EGPRS850	128	VH	TN	5.33	0.006463	2.5	PASS
EGPRS850	190	VL	TN	9.75	0.011655	2.5	PASS
EGPRS850	190	VN	TN	6.72	0.008027	2.5	PASS
EGPRS850	190	VH	TN	5.75	0.006869	2.5	PASS
EGPRS850	251	VL	TN	6.23	0.007341	2.5	PASS
EGPRS850	251	VN	TN	6.46	0.007607	2.5	PASS
EGPRS850	251	VH	TN	2.26	0.002663	2.5	PASS
GSM1900	512	VL	TN	26.28	0.014204	2.5	PASS
GSM1900	512	VN	TN	29.77	0.016089	2.5	PASS
GSM1900	512	VH	TN	24.60	0.013297	2.5	PASS
GSM1900	661	VL	TN	18.31	0.009737	2.5	PASS
GSM1900	661	VN	TN	27.12	0.014426	2.5	PASS
GSM1900	661	VH	TN	25.22	0.013412	2.5	PASS
GSM1900	810	VL	TN	25.31	0.013254	2.5	PASS
GSM1900	810	VN	TN	23.47	0.012290	2.5	PASS
GSM1900	810	VH	TN	25.12	0.013152	2.5	PASS
GPRS1900	512	VL	TN	34.35	0.018567	2.5	PASS
GPRS1900	512	VN	TN	27.67	0.014955	2.5	PASS
GPRS1900	512	VH	TN	35.68	0.019282	2.5	PASS
GPRS1900	661	VL	TN	31.83	0.016933	2.5	PASS
GPRS1900	661	VN	TN	30.64	0.016297	2.5	PASS
GPRS1900	661	VH	TN	29.38	0.015628	2.5	PASS
GPRS1900	810	VL	TN	22.05	0.011546	2.5	PASS
GPRS1900	810	VN	TN	20.21	0.010583	2.5	PASS
GPRS1900	810	VH	TN	23.28	0.012189	2.5	PASS
EGPRS1900	512	VL	TN	21.89	0.011831	2.5	PASS
EGPRS1900	512	VN	TN	21.21	0.011465	2.5	PASS
EGPRS1900	512	VH	TN	17.63	0.009528	2.5	PASS

EGPRS1900	661	VL	TN	16.05	0.008535	2.5	PASS
EGPRS1900	661	VN	TN	19.31	0.010270	2.5	PASS
EGPRS1900	661	VH	TN	16.98	0.009033	2.5	PASS
EGPRS1900	810	VL	TN	18.47	0.009670	2.5	PASS
EGPRS1900	810	VN	TN	17.50	0.009163	2.5	PASS
EGPRS1900	810	VH	TN	16.63	0.008706	2.5	PASS

Temperature							
Band	Channel	Voltage (Vdc)	Temperature (°C)	Deviation (Hz)	Deviation (ppm)	Limit (ppm)	Verdict
GSM850	128	VN	-30	10.98	0.013319	2.5	PASS
GSM850	128	VN	-20	6.91	0.008383	2.5	PASS
GSM850	128	VN	-10	3.10	0.003761	2.5	PASS
GSM850	128	VN	0	8.85	0.010733	2.5	PASS
GSM850	128	VN	10	14.33	0.017393	2.5	PASS
GSM850	128	VN	20	10.85	0.013162	2.5	PASS
GSM850	128	VN	30	10.75	0.013044	2.5	PASS
GSM850	128	VN	40	13.11	0.015904	2.5	PASS
GSM850	128	VN	50	13.50	0.016374	2.5	PASS
GSM850	190	VN	-30	7.33	0.008760	2.5	PASS
GSM850	190	VN	-20	8.46	0.010111	2.5	PASS
GSM850	190	VN	-10	8.30	0.009918	2.5	PASS
GSM850	190	VN	0	9.72	0.011616	2.5	PASS
GSM850	190	VN	10	8.36	0.009995	2.5	PASS
GSM850	190	VN	20	9.52	0.011385	2.5	PASS
GSM850	190	VN	30	8.91	0.010651	2.5	PASS
GSM850	190	VN	40	9.56	0.011423	2.5	PASS
GSM850	190	VN	50	12.82	0.015321	2.5	PASS
GSM850	251	VN	-30	-0.39	-0.000456	2.5	PASS
GSM850	251	VN	-20	-1.26	-0.001483	2.5	PASS
GSM850	251	VN	-10	2.55	0.003005	2.5	PASS
GSM850	251	VN	0	2.23	0.002625	2.5	PASS
GSM850	251	VN	10	2.32	0.002739	2.5	PASS
GSM850	251	VN	20	6.65	0.007836	2.5	PASS
GSM850	251	VN	30	9.49	0.011183	2.5	PASS
GSM850	251	VN	40	5.59	0.006580	2.5	PASS
GSM850	251	VN	50	9.01	0.010612	2.5	PASS
GPRS850	128	VN	-30	12.20	0.014807	2.5	PASS
GPRS850	128	VN	-20	10.75	0.013044	2.5	PASS
GPRS850	128	VN	-10	9.33	0.011321	2.5	PASS
GPRS850	128	VN	0	10.23	0.012418	2.5	PASS
GPRS850	128	VN	10	10.59	0.012849	2.5	PASS
GPRS850	128	VN	20	14.24	0.017275	2.5	PASS
GPRS850	128	VN	30	13.85	0.016805	2.5	PASS
GPRS850	128	VN	40	13.92	0.016883	2.5	PASS
GPRS850	128	VN	50	12.62	0.015316	2.5	PASS
GPRS850	190	VN	-30	6.13	0.007332	2.5	PASS
GPRS850	190	VN	-20	8.33	0.009957	2.5	PASS
GPRS850	190	VN	-10	7.33	0.008760	2.5	PASS
GPRS850	190	VN	0	6.30	0.007525	2.5	PASS
GPRS850	190	VN	10	13.79	0.016479	2.5	PASS
GPRS850	190	VN	20	13.66	0.016324	2.5	PASS
GPRS850	190	VN	30	12.53	0.014974	2.5	PASS
GPRS850	190	VN	40	12.75	0.015244	2.5	PASS
GPRS850	190	VN	50	15.17	0.018138	2.5	PASS

GPRS850	251	VN	-30	-0.74	-0.000875	2.5	PASS
GPRS850	251	VN	-20	0.81	0.000951	2.5	PASS
GPRS850	251	VN	-10	1.03	0.001217	2.5	PASS
GPRS850	251	VN	0	5.07	0.005972	2.5	PASS
GPRS850	251	VN	10	4.68	0.005515	2.5	PASS
GPRS850	251	VN	20	7.55	0.008901	2.5	PASS
GPRS850	251	VN	30	7.62	0.008977	2.5	PASS
GPRS850	251	VN	40	8.81	0.010384	2.5	PASS
GPRS850	251	VN	50	8.94	0.010536	2.5	PASS
EGPRS850	128	VN	-30	7.39	0.008970	2.5	PASS
EGPRS850	128	VN	-20	4.29	0.005210	2.5	PASS
EGPRS850	128	VN	-10	6.46	0.007834	2.5	PASS
EGPRS850	128	VN	0	9.07	0.011007	2.5	PASS
EGPRS850	128	VN	10	9.17	0.011125	2.5	PASS
EGPRS850	128	VN	20	12.27	0.014885	2.5	PASS
EGPRS850	128	VN	30	11.17	0.013554	2.5	PASS
EGPRS850	128	VN	40	10.82	0.013123	2.5	PASS
EGPRS850	128	VN	50	11.82	0.014337	2.5	PASS
EGPRS850	190	VN	-30	5.10	0.006097	2.5	PASS
EGPRS850	190	VN	-20	5.84	0.006985	2.5	PASS
EGPRS850	190	VN	-10	5.07	0.006059	2.5	PASS
EGPRS850	190	VN	0	7.68	0.009185	2.5	PASS
EGPRS850	190	VN	10	10.23	0.012234	2.5	PASS
EGPRS850	190	VN	20	13.59	0.016247	2.5	PASS
EGPRS850	190	VN	30	8.14	0.009725	2.5	PASS
EGPRS850	190	VN	40	13.88	0.016594	2.5	PASS
EGPRS850	190	VN	50	8.17	0.009764	2.5	PASS
EGPRS850	251	VN	-30	5.07	0.005972	2.5	PASS
EGPRS850	251	VN	-20	1.10	0.001293	2.5	PASS
EGPRS850	251	VN	-10	1.45	0.001712	2.5	PASS
EGPRS850	251	VN	0	0.48	0.000571	2.5	PASS
EGPRS850	251	VN	10	5.65	0.006656	2.5	PASS
EGPRS850	251	VN	20	3.91	0.004602	2.5	PASS
EGPRS850	251	VN	30	9.01	0.010612	2.5	PASS
EGPRS850	251	VN	40	4.81	0.005668	2.5	PASS
EGPRS850	251	VN	50	9.49	0.011183	2.5	PASS
GSM1900	512	VN	-30	32.87	0.017764	2.5	PASS
GSM1900	512	VN	-20	24.76	0.013384	2.5	PASS
GSM1900	512	VN	-10	26.86	0.014518	2.5	PASS
GSM1900	512	VN	0	27.70	0.014972	2.5	PASS
GSM1900	512	VN	10	30.38	0.016420	2.5	PASS
GSM1900	512	VN	20	28.31	0.015304	2.5	PASS
GSM1900	512	VN	30	28.19	0.015234	2.5	PASS
GSM1900	512	VN	40	35.22	0.019038	2.5	PASS
GSM1900	512	VN	50	26.64	0.014396	2.5	PASS
GSM1900	661	VN	-30	26.09	0.013876	2.5	PASS
GSM1900	661	VN	-20	30.03	0.015971	2.5	PASS
GSM1900	661	VN	-10	24.21	0.012880	2.5	PASS
GSM1900	661	VN	0	24.86	0.013223	2.5	PASS
GSM1900	661	VN	10	24.83	0.013206	2.5	PASS
GSM1900	661	VN	20	31.64	0.016830	2.5	PASS
GSM1900	661	VN	30	23.60	0.012554	2.5	PASS
GSM1900	661	VN	40	30.06	0.015988	2.5	PASS
GSM1900	661	VN	50	29.96	0.015937	2.5	PASS
GSM1900	810	VN	-30	25.09	0.013135	2.5	PASS

GSM1900	810	VN	-20	27.86	0.014589	2.5	PASS
GSM1900	810	VN	-10	23.05	0.012070	2.5	PASS
GSM1900	810	VN	0	24.09	0.012611	2.5	PASS
GSM1900	810	VN	10	27.77	0.014539	2.5	PASS
GSM1900	810	VN	20	27.77	0.014539	2.5	PASS
GSM1900	810	VN	30	26.18	0.013710	2.5	PASS
GSM1900	810	VN	40	27.51	0.014403	2.5	PASS
GSM1900	810	VN	50	29.80	0.015604	2.5	PASS
GPRS1900	512	VN	-30	34.68	0.018741	2.5	PASS
GPRS1900	512	VN	-20	24.89	0.013454	2.5	PASS
GPRS1900	512	VN	-10	32.09	0.017345	2.5	PASS
GPRS1900	512	VN	0	36.26	0.019596	2.5	PASS
GPRS1900	512	VN	10	30.99	0.016752	2.5	PASS
GPRS1900	512	VN	20	35.29	0.019073	2.5	PASS
GPRS1900	512	VN	30	35.09	0.018968	2.5	PASS
GPRS1900	512	VN	40	32.32	0.017467	2.5	PASS
GPRS1900	512	VN	50	31.87	0.017223	2.5	PASS
GPRS1900	661	VN	-30	29.41	0.015645	2.5	PASS
GPRS1900	661	VN	-20	30.90	0.016435	2.5	PASS
GPRS1900	661	VN	-10	35.61	0.018942	2.5	PASS
GPRS1900	661	VN	0	32.71	0.017397	2.5	PASS
GPRS1900	661	VN	10	33.19	0.017654	2.5	PASS
GPRS1900	661	VN	20	31.12	0.016555	2.5	PASS
GPRS1900	661	VN	30	31.48	0.016744	2.5	PASS
GPRS1900	661	VN	40	25.60	0.013618	2.5	PASS
GPRS1900	661	VN	50	32.25	0.017156	2.5	PASS
GPRS1900	810	VN	-30	20.82	0.010904	2.5	PASS
GPRS1900	810	VN	-20	30.06	0.015739	2.5	PASS
GPRS1900	810	VN	-10	23.92	0.012527	2.5	PASS
GPRS1900	810	VN	0	28.57	0.014961	2.5	PASS
GPRS1900	810	VN	10	29.09	0.015232	2.5	PASS
GPRS1900	810	VN	20	38.55	0.020185	2.5	PASS
GPRS1900	810	VN	30	29.02	0.015198	2.5	PASS
GPRS1900	810	VN	40	27.89	0.014606	2.5	PASS
GPRS1900	810	VN	50	37.10	0.019424	2.5	PASS
EGPRS1900	512	VN	-30	20.08	0.010854	2.5	PASS
EGPRS1900	512	VN	-20	18.27	0.009877	2.5	PASS
EGPRS1900	512	VN	-10	17.24	0.009318	2.5	PASS
EGPRS1900	512	VN	0	17.14	0.009266	2.5	PASS
EGPRS1900	512	VN	10	20.11	0.010871	2.5	PASS
EGPRS1900	512	VN	20	23.70	0.012808	2.5	PASS
EGPRS1900	512	VN	30	17.85	0.009650	2.5	PASS
EGPRS1900	512	VN	40	24.54	0.013262	2.5	PASS
EGPRS1900	512	VN	50	17.85	0.009650	2.5	PASS
EGPRS1900	661	VN	-30	14.92	0.007934	2.5	PASS
EGPRS1900	661	VN	-20	24.89	0.013241	2.5	PASS
EGPRS1900	661	VN	-10	15.21	0.008089	2.5	PASS
EGPRS1900	661	VN	0	15.63	0.008312	2.5	PASS
EGPRS1900	661	VN	10	14.85	0.007900	2.5	PASS
EGPRS1900	661	VN	20	25.47	0.013550	2.5	PASS
EGPRS1900	661	VN	30	15.24	0.008106	2.5	PASS
EGPRS1900	661	VN	40	24.31	0.012932	2.5	PASS
EGPRS1900	661	VN	50	23.54	0.012519	2.5	PASS
EGPRS1900	810	VN	-30	16.18	0.008470	2.5	PASS
EGPRS1900	810	VN	-20	15.21	0.007962	2.5	PASS