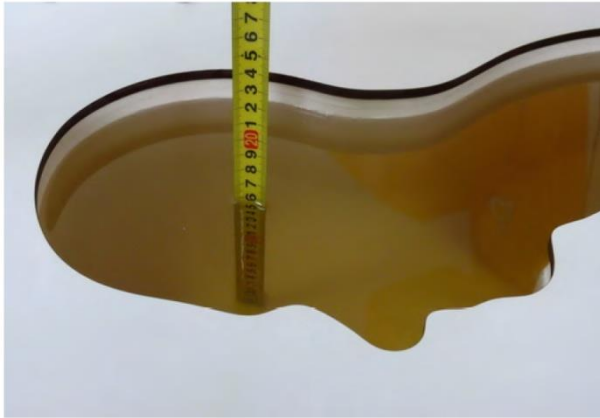


### 16. TestSetup Photos



Liquid depth in the head phantom (835MHz)



Liquid depth in the body phantom (835MHz)



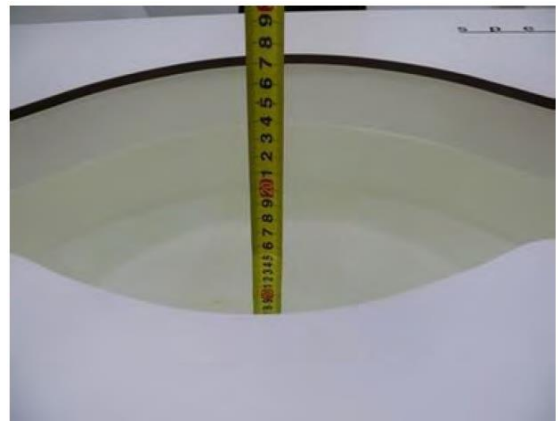
Liquid depth in the head phantom (1750MHz)



Liquid depth in the body phantom (1750MHz)



Liquid depth in the head phantom (1900MHz)



Liquid depth in the body phantom (1900MHz)



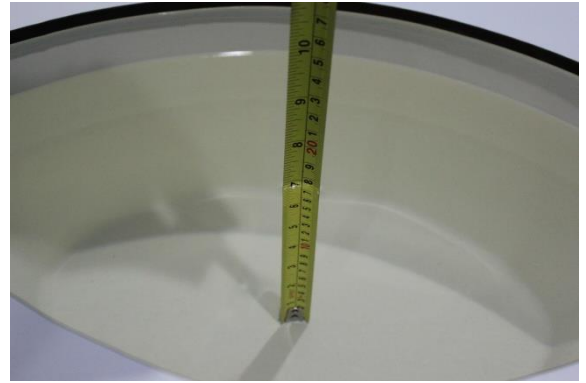
Liquid depth in the head phantom (2450MHz)



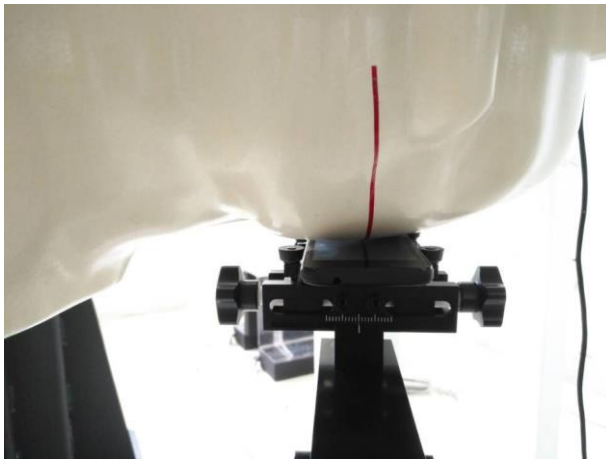
Liquid depth in the body phantom (2450MHz)



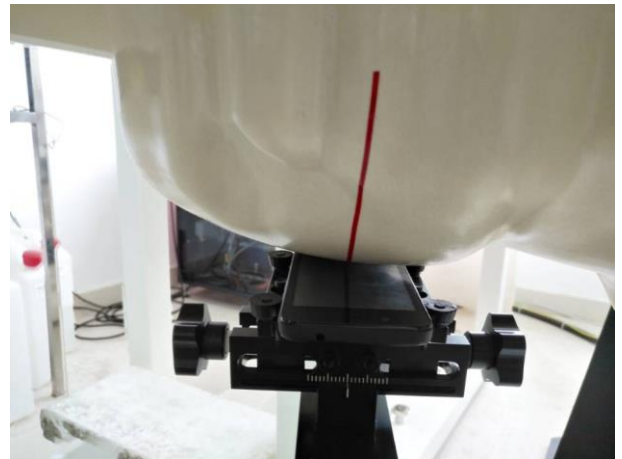
Liquid depth in the head phantom (2600MHz)



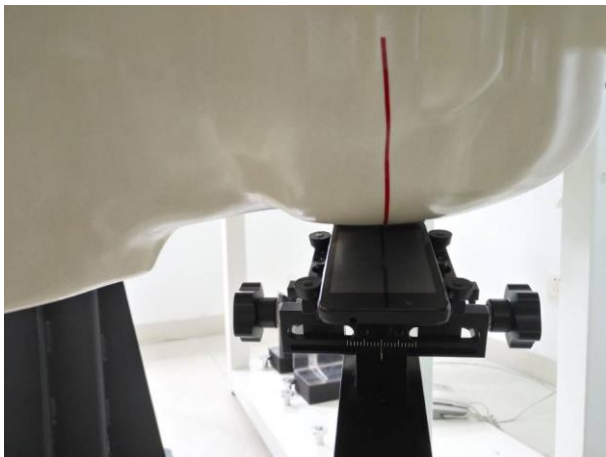
Liquid depth in the body phantom (2600MHz)



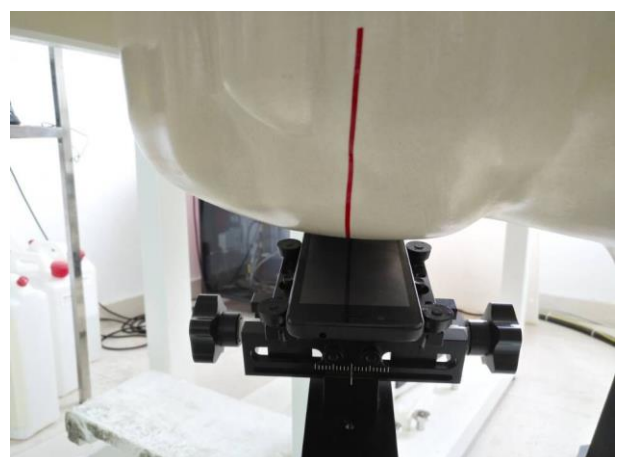
Left Head Touch



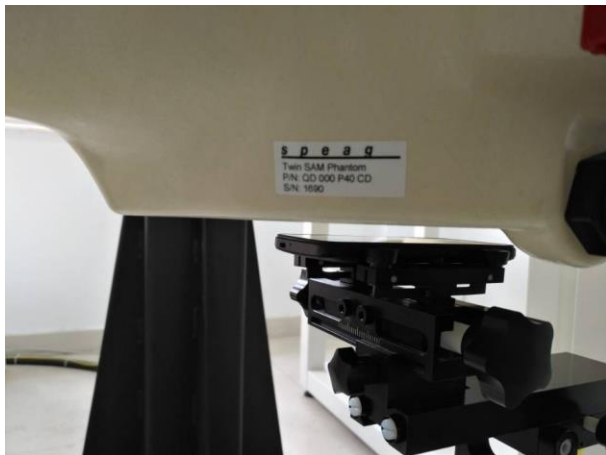
Right Head Touch



Left Head Tilt (15°)



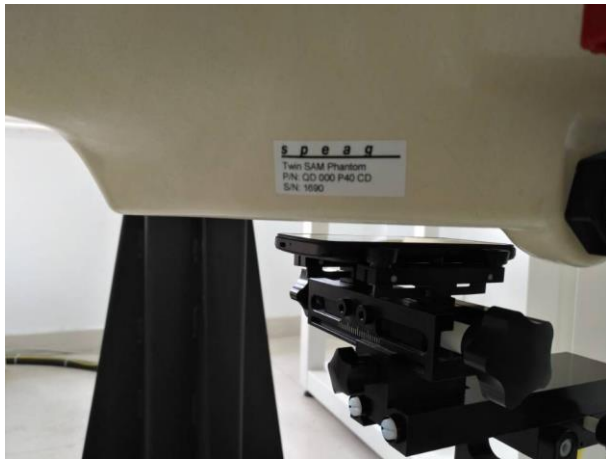
Right Head Tilt (15°)



Body-worn Front Side (10mm)



Body-wornRear Side (10mm)



Front Side (10mm)



Rear Side (10mm)



Left Side (10mm)



Right Side (10mm)



Top Side (10mm)



Bottom Side (10mm)

## **17. External and Internal Photos of the EUT**

Please reference to the report No.: TRE170700301

**-----End of Report-----**