

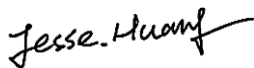
SAR EVALUATION REPORT

For

b mobile HK Limited

Flat 18; 14/F Block 1; Golden Industrial Building; 16-26 Kwai Tak Street; Kwai Chung; New Territories; Hong Kong

FCC ID: ZSW-30-035

Report Type: Original Report	Product Type: Mobile Phone
Report Number: <u>RSZ161026005-20</u>	
Report Date: <u>2016-11-28</u>	
Reviewed By: <u>Jesse Huang</u> Manager	
Prepared By: Bay Area Compliance Laboratories Corp. (Kunshan) No.248 Chenghu Road, Kunshan, Jiangsu province, China Tel: +86-0512-86175000 Fax: +86-0512-88934268 www.baclcorp.com.cn	

Attestation of Test Results			
EUT Information	EUT Description	Mobile Phone	
	Tested Model	AX1065e	
	FCC ID	ZSW-30-035	
	Serial Number	16102600521	
	Test Date	2016-11-21 ~ 2016-11-27	
MODE		Max. SAR Level(s) Reported(W/Kg)	Limit (W/Kg)
GSM 850	1g Head SAR	0.381	1.6
	1g Body SAR	1.195	
PCS 1900	1g Head SAR	0.327	
	1g Body SAR	1.110	
WCDMA Band 2	1g Head SAR	0.479	
	1g Body SAR	1.162	
WCDMA Band 5	1g Head SAR	0.328	
	1g Body SAR	1.018	
LTE Band 2	1g Head SAR	0.612	
	1g Body SAR	0.357	
LTE Band 4	1g Head SAR	0.645	
	1g Body SAR	0.339	
LTE Band 5	1g Head SAR	0.543	
	1g Body SAR	0.374	
LTE Band 7	1g Head SAR	0.419	
	1g Body SAR	0.227	
Simultaneous	1g Head SAR	1.045	
	1g Body SAR	1.562	
	1g Body SAR	1.395 (Hotspot)	
Applicable Standards	ANSI / IEEE C95.1 : 2005 IEEE Standard for Safety Levels with Respect to Human Exposure to Radio Frequency Electromagnetic Fields,3 kHz to 300 GHz.		
	ANSI / IEEE C95.3 : 2002 IEEE Recommended Practice for Measurements and Computations of Radio Frequency Electromagnetic Fields With Respect to Human Exposure to SuchFields,100 kHz—300 GHz.		
	FCC 47 CFR part 2.1093 Radiofrequency radiation exposure evaluation: portable devices		
	IEEE1528:2013 IEEE Recommended Practice for Determining the Peak Spatial-Average Specific Absorption Rate (SAR) in the Human Head from Wireless Communications Devices: Measurement Techniques		

Applicable Standards	<p>IEC 62209-2:2010 Human exposure to radio frequency fields from hand-held and body-mounted wireless communication devices-Human models, instrumentation, and procedures-Part 2: Procedure to determine the specific absorption rate (SAR) for wireless communication devices used in close proximity to the human body (frequency range of 30 MHz to 6 GHz)</p>
	<p>KDB procedures KDB 447498 D01 General RF Exposure Guidance v06 KDB 648474 D04 Handset SAR v01r03 KDB 865664 D01 SAR Measurement 100 MHz to 6 GHz v01r04 KDB 865664 D02 RF Exposure Reporting v01r02 KDB 941225 D01 3G SAR Procedures v03r01 KDB 941225 D05 SAR for LTE Devices v02r04 KDB 941225 D06 Hotspot Mode v02r01</p>
<p>Note: This wireless device has been shown to be capable of compliance for localized specific absorption rate (SAR) for General Population/Uncontrolled Exposure limits specified in ANSI/IEEE Standards and has been tested in accordance with the measurement procedures specified in IEEE 1528-2013 and RF exposure KDB procedures. The results and statements contained in this report pertain only to the device(s) evaluated.</p>	

TABLE OF CONTENTS

DOCUMENT REVISION HISTORY	5
EUT DESCRIPTION	6
TECHNICAL SPECIFICATION	6
REFERENCE, STANDARDS, AND GUIDELINES	7
SAR LIMITS	8
FACILITIES.....	9
DESCRIPTION OF TEST SYSTEM	10
EQUIPMENT LIST AND CALIBRATION	15
EQUIPMENTS LIST & CALIBRATION INFORMATION	15
SAR MEASUREMENT SYSTEM VERIFICATION	16
LIQUID VERIFICATION	16
SYSTEM ACCURACY VERIFICATION	19
SAR SYSTEM VALIDATION DATA	20
EUT TEST STRATEGY AND METHODOLOGY	28
TEST POSITIONS FOR DEVICE OPERATING NEXT TO A PERSON’S EAR.....	28
CHEEK/TOUCH POSITION	29
EAR/TILT POSITION	29
TEST POSITIONS FOR BODY-WORN AND OTHER CONFIGURATIONS	30
SAR EVALUATION PROCEDURE.....	31
TEST METHODOLOGY	31
CONDUCTED OUTPUT POWER MEASUREMENT	32
PROVISION APPLICABLE	32
TEST PROCEDURE	32
RADIO CONFIGURATION	32
MAXIMUM TARGET OUTPUT POWER	37
TEST RESULTS:	38
SAR MEASUREMENT RESULTS.....	50
SAR TEST DATA.....	50
SAR MEASUREMENT VARIABILITY	60
SAR SIMULTANEOUS TRANSMISSION DESCRIPTION	61
SAR PLOTS.....	67
APPENDIX A MEASUREMENT UNCERTAINTY	68
APPENDIX B EUT TEST POSITION PHOTOS	70
LIQUID DEPTH ≥ 15CM	70
BODY WORN BACK SETUP PHOTO(5MM)	70
BODY BACK SETUP PHOTO(10MM).....	71
BODY RIGHT SETUP PHOTO(10MM).....	71
BODY LEFT SETUP PHOTO(10MM).....	72
BODY BOTTOM SETUP PHOTO(10MM)	72
HEAD LEFT CHEEK SETUP PHOTO.....	73
HEAD LEFT TILT SETUP PHOTO	73
HEAD RIGHT CHEEK SETUP PHOTO	74
HEAD RIGHT TILT SETUP PHOTO	74
APPENDIX C CALIBRATION CERTIFICATES	75

DOCUMENT REVISION HISTORY

Revision Number	Report Number	Description of Revision	Date of Revision
0	RSZ161026005-20	Original Report	2016-11-28

EUT DESCRIPTION

This report has been prepared on behalf of b mobile HK Limited and their product Mobile Phone, Model: AX1065e, FCC ID: ZSW-30-035 or the EUT (Equipment under Test) as referred to in the rest of this report.

**All measurement and test data in this report was gathered from production sample serial number: 16102600521 (Assigned by BACL, Kunshan).The EUT supplied by the applicant was received on 2016-10-26.*

Technical Specification

Device Type:	Portable
Exposure Category:	Population / Uncontrolled
Antenna Type(s):	Internal Antenna
Body-Worn Accessories:	Headset
Face-Head Accessories:	None
Operation Mode :	GSM Voice, GPRS/EDGE Data, WCDMA(R99 (Voice+Data),HSUPA, HSDPA, HSPA+) FDD-LTE WLAN Bluetooth
Frequency Band:	GSM 850: 824-849 MHz(TX); 869-894 MHz(RX) PCS 1900: 1850-1910 MHz(TX); 1930-1990 MHz(RX) WCDMA Band 2: 1850-1910 MHz(TX); 1930-1990 MHz(RX) WCDMA Band 5: 824-849 MHz(TX); 869-894 MHz(RX) LTE Band 2: 1850-1910 MHz(TX) ; 1930-1990 MHz(RX) LTE Band 4: 1710-1755 MHz(TX) ; 2110-2155 MHz(RX) LTE Band 5: 824-849 MHz(TX) ; 869-894 MHz(RX) LTE Band 7: 2500-2570 MHz(TX) ; 2620-2690 MHz(RX) WLAN: 2422 -2462 MHz /2412 -2472 MHz Bluetooth : 2402 MHz-2480 MHz
Conducted RF Power:	GSM 850 : 32.48 dBm PCS 1900: 29.91 dBm WCDMA Band 2: 21.46 dBm WCDMA Band 5: 21.83 dBm LTE Band 2: 22.98 dBm LTE Band 4: 22.91 dBm LTE Band 5: 23.15 dBm LTE Band 7: 22.93 dBm WLAN: 9.63 dBm Bluetooth(BDR/EDR): 8.35 dBm BLE:1.0 dBm
Dimensions (L*W*H):	11.4 cm (L) × 7.25 cm (W) × 0.98 cm (H)
Power Source:	3.8 VDC Rechargeable Battery
Normal Operation:	Head and Body-worn

REFERENCE, STANDARDS, AND GUIDELINES

FCC:

The Report and Order requires routine SAR evaluation prior to equipment authorization of portable transmitter devices, including portable telephones. For consumer products, the applicable limit is 1.6 mW/g as recommended by the ANSI/IEEE standard C95.1-1992 [6] for an uncontrolled environment (Paragraph 65). According to the Supplement C of OET Bulletin 65 "Evaluating Compliance with FCC Guide-lines for Human Exposure to Radio frequency Electromagnetic Fields", released on Jun 29, 2001 by the FCC, the device should be evaluated at maximum output power (radiated from the antenna) under "worst-case" conditions for normal or intended use, incorporating normal antenna operating positions, device peak performance frequencies and positions for maximum RF energy coupling.

This report describes the methodology and results of experiments performed on wireless data terminal. The objective was to determine if there is RF radiation and if radiation is found, what is the extent of radiation with respect to safety limits. SAR (Specific Absorption Rate) is the measure of RF exposure determined by the amount of RF energy absorbed by human body (or its parts) – to determine how the RF energy couples to the body or head which is a primary health concern for body worn devices. The limit below which the exposure to RF is considered safe by regulatory bodies in North America is 1.6 mW/g average over 1 gram of tissue mass.

CE:

The order requires routine SAR evaluation prior to equipment authorization of portable transmitter devices, including portable telephones. For consumer products, the applicable limit is 2 mW/g as recommended by EN62209-1 for an uncontrolled environment. According to the Standard, the device should be evaluated at maximum output power (radiated from the antenna) under "worst-case" conditions for normal or intended use, incorporating normal antenna operating positions, device peak performance frequencies and positions for maximum RF energy coupling.

This report describes the methodology and results of experiments performed on wireless data terminal. The objective was to determine if there is RF radiation and if radiation is found, what is the extent of radiation with respect to safety limits. SAR (Specific Absorption Rate) is the measure of RF exposure determined by the amount of RF energy absorbed by human body (or its parts) – to determine how the RF energy couples to the body or head which is a primary health concern for body worn devices. The limit below which the exposure to RF is considered safe by regulatory bodies in Europe is 2 mW/g average over 10 gram of tissue mass.

The test configurations were laid out on a specially designed test fixture to ensure the reproducibility of measurements. Each configuration was scanned for SAR. Analysis of each scan was carried out to characterize the above effects in the device.

SAR Limits

FCC Limit

EXPOSURE LIMITS	SAR (W/kg)	
	(General Population / Uncontrolled Exposure Environment)	(Occupational / Controlled Exposure Environment)
Spatial Average (averaged over the whole body)	0.08	0.4
Spatial Peak (averaged over any 1 g of tissue)	1.60	8.0
Spatial Peak (hands/wrists/feet/ankles averaged over 10 g)	4.0	20.0

CE Limit

EXPOSURE LIMITS	SAR (W/kg)	
	(General Population / Uncontrolled Exposure Environment)	(Occupational / Controlled Exposure Environment)
Spatial Average (averaged over the whole body)	0.08	0.4
Spatial Peak (averaged over any 10 g of tissue)	2.0	10
Spatial Peak (hands/wrists/feet/ankles averaged over 10 g)	4.0	20.0

Population/Uncontrolled Environments are defined as locations where there is the exposure of individual who have no knowledge or control of their exposure.

Occupational/Controlled Environments are defined as locations where there is exposure that may be incurred by people who are aware of the potential for exposure (i.e. as a result of employment or occupation).

General Population/Uncontrolled environments Spatial Peak limit 1.6W/kg (FCC) & 2 W/kg (CE) applied to the EUT.

FACILITIES

The test site used by Bay Area Compliance Laboratories Corp. (Kunshan) to collect test data is located on No.248 Chenghu Road,Kunshan, Jiangsu province,China.

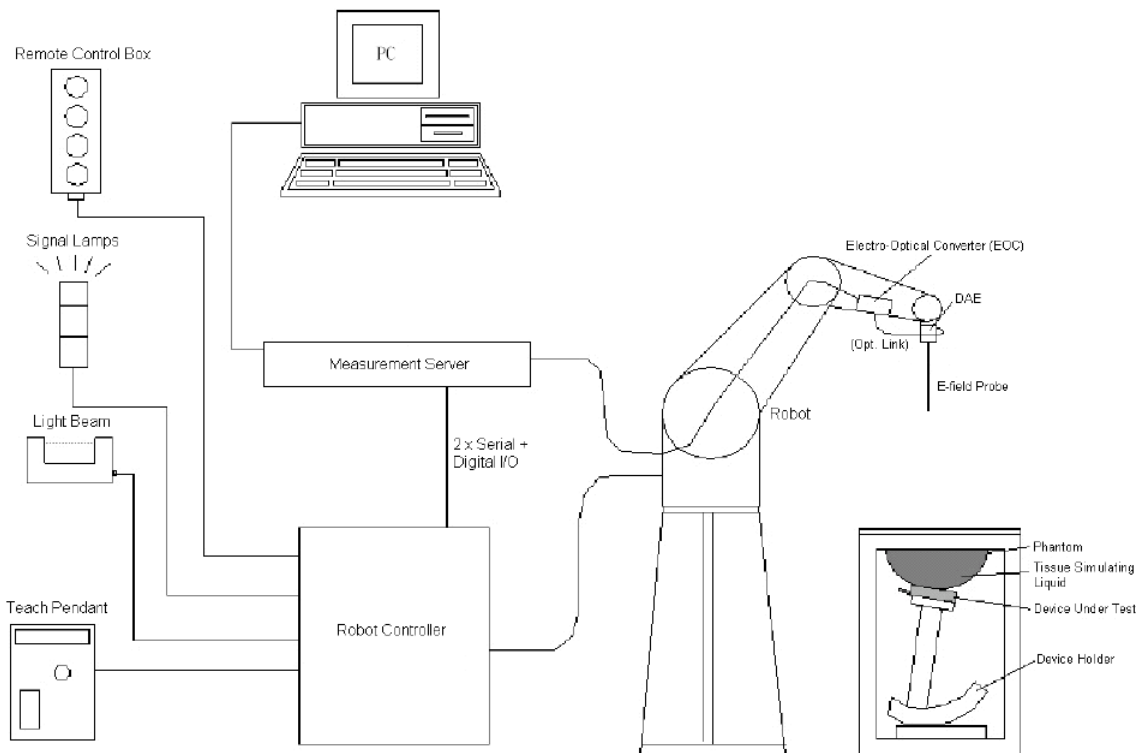
DESCRIPTION OF TEST SYSTEM

These measurements were performed with the automated near-field scanning system DASY5 from Schmid & Partner Engineering AG (SPEAG) which is the Fifth generation of the system shown in the figure hereinafter:



DASY5 System Description

The DASY5 system for performing compliance tests consists of the following items:



- A standard high precision 6-axis robot (Staubli TX=RX family) with controller, teach pendant and software. An arm extension for accommodating the data acquisition electronics (DAE).
- An isotropic field probe optimized and calibrated for the targeted measurement.
- A data acquisition electronics (DAE) which performs the signal application, signal multiplexing, AD-conversion, offset measurements, mechanical surface detection, collision detection, etc. The unit is battery powered with standard or rechargeable batteries. The signal is optically transmitted to the EOC.
- The Electro-optical converter (EOC) performs the conversion from optical to electrical signals for the digital communication to the DAE. To use optical surface detection, a special version of the EOC is required. The EOC signal is transmitted to the measurement server.
- The function of the measurement server is to perform the time critical tasks such as signal filtering, control of the robot operation and fast movement interrupts.
- The Light Beam used is for probe alignment. This improves the (absolute) accuracy of the probe positioning.
- A computer running Win7 professional operating system and the DASY52 software.
- Remote control and teach pendant as well as additional circuitry for robot safety such as warning lamps, etc.
- The phantom, the device holder and other accessories according to the targeted measurement.

DASY5 Measurement Server

The DASY5 measurement server is based on a PC/104 CPU board with a 400MHz Intel ULV Celeron, 128MB chip-disk and 128MB RAM. The necessary circuits for communication with the DAE4 (or DAE3) electronics box, as well as the 16 bit AD-converter system for optical detection and digital I/O interface are contained on the DASY5 I/O board, which is directly connected to the PC/104 bus of the CPU board.



The measurement server performs all real-time data evaluation of field measurements and surface detection, controls robot movements and handles safety operation. The PC operating system cannot interfere with these time critical processes. All connections are supervised by a watchdog, and disconnection of any of the cables to the measurement server will automatically disarm the robot and disable all program-controlled robot movements. Furthermore, the measurement server is equipped with an expansion port which is reserved for future applications. Please note that this expansion port does not have a standardized point out, and therefore only devices provided by SPEAG can be connected. Devices from any other supplier could seriously damage the measurement server.

Data Acquisition Electronics

The data acquisition electronics (DAE4) consist of a highly sensitive electrometer-grade preamplifier with auto-zeroing, a channel and gain-switching multiplexer, a fast 16 bit AD-converter and a command decoder with a control logic unit. Transmission to the measurement server is accomplished through an optical downlink for data and status information, as well as an optical uplink for commands and the clock.

The mechanical probe mounting device includes two different sensor systems for frontal and sideways probe contacts. They are used for mechanical surface detection and probe collision detection.

The input impedance of both the DAE4 as well as of the DAE3 box is 200M Ω ; the inputs are symmetrical and floating. Common mode rejection is above 80 dB.

EX3DV4 E-Field Probes

Frequency	10 MHz to > 6 GHz Linearity: ± 0.2 dB (30 MHz to 6 GHz)
Directivity	± 0.3 dB in TSL (rotation around probe axis) ± 0.5 dB in TSL (rotation normal to probe axis)
Dynamic Range	10 µW/g to > 100 mW/g Linearity: ± 0.2 dB (noise: typically < 1 µW/g)
Dimensions	Overall length: 337 mm (Tip: 20 mm) Tip diameter: 2.5 mm (Body: 12 mm) Typical distance from probe tip to dipole centers: 1 mm
Application	High precision dosimetric measurements in any exposure scenario (e.g., very strong gradient fields); the only probe that enables compliance testing for frequencies up to 6 GHz with precision of better 30%.
Compatibility	DASY3, DASY4, DASY52 SAR and higher, EASY4/MRI

SAM Twin Phantom

The SAM twin phantom is a fiberglass shell phantom with 2mm shell thickness (except the ear region, where shell thickness

increases to 6 mm). The phantom has three measurement areas:

- _ Left hand
- _ Right hand
- _ Flat phantom

The phantom table for the DASY systems based on the TX90XL and RX160L robots have the size of 100 x 50 x 85 cm (L x W x H).

The phantom table for the compact DASY systems based on the RX60L robot have the size of 100 x 75 x 91 cm (L x W x H); these tables are reinforced for mounting of the robot onto the table.

For easy dislocation these tables have fork lift cut outs at the bottom.

The bottom plate contains three pairs of bolts for locking the device holder. The device holder positions are adjusted to the standard measurement positions in the three sections. Only one device holder is necessary if two phantoms are used (e.g., for different liquids)

A white cover is provided to cover the phantom during off-periods to prevent water evaporation and changes in the liquid parameters. Free space scans of devices on top of this phantom cover are possible. Three reference marks are provided on the phantom counter. These reference marks are used to teach the absolute phantom position relative to the robot.



Robots

The DASY5 system uses the high precision industrial robots TX90XL from Staubli SA (France). The TX robot family is the successor of the well known RX robot family and offers the same features important for our application:

- High precision (repeatability 0.02mm)
- High reliability (industrial design)
- Low maintenance costs (virtually maintenance free due to direct drive gears; no belt drives)
- Jerk-free straight movements (brushless synchrony motors; no stepper motors)
- Low ELF interference (motor control fields shielded via the closed metallic construction shields)

The above mentioned robots are controlled by the Staubli CS8c robot controllers. All information regarding the use and maintenance of the robot arm and the robot controller is contained on the CDs delivered along with the robot. Paper manuals are available upon request direct from Staubli.

Area Scans

Area scans are defined prior to the measurement process being executed with a user defined variable spacing between each measurement point (integral) allowing low uncertainty measurements to be conducted. Scans defined for FCC applications utilize a 15mm 2 step integral, with 1.5mm interpolation used to locate the peak SAR area used for zoom scan assessments.

Where the system identifies multiple SAR peaks (which are within 25% of peak value) the system will provide the user with the option of assessing each peak location individually for zoom scan averaging.

Zoom Scan (Cube Scan Averaging)

The averaging zoom scan volume utilized in the DASY5 software is in the shape of a cube and the side dimension of a 1 g or 10 g mass is dependent on the density of the liquid representing the simulated tissue. A density of 1000 kg/m³ is used to represent the head and body tissue density and not the phantom liquid density, in order to be consistent with the definition of the liquid dielectric properties, i.e. the side length of the 1g cube is 10mm, with the side length of the 10g cube is 21.5mm.

When the cube intersects with the surface of the phantom, it is oriented so that 3 vertices touch the surface of the shell or the center of a face is tangent to the surface. The face of the cube closest to the surface is modified in order to conform to the tangent surface.

The zoom scan integer steps can be user defined so as to reduce uncertainty, but normal practice for typical test applications (including FCC) utilize a physical step of 7 x 7 x 7 (5mmx5mmx5mm) providing a volume of 30 mm in the X & Y & Z axis.

Tissue Dielectric Parameters for Head and Body Phantoms

The head tissue dielectric parameters recommended by the IEEE SCC-34/SC-2 in P1528 have been incorporated in the following table. These head parameters are derived from planar layer models simulating the highest expected SAR for the dielectric properties and tissue thickness variations in a human head. Other head and body tissue parameters that have not been specified in P1528 are derived from the tissue dielectric parameters computed from the 4-Cole-Cole equations described in Reference [12] and extrapolated according to the head parameters specified in P1528.

Recommended Tissue Dielectric Parameters for Head and Body

Frequency (MHz)	Head Tissue		Body Tissue	
	ϵ_r	σ (S/m)	ϵ_r	σ (S/m)
150	52.3	0.76	61.9	0.80
300	45.3	0.87	58.2	0.92
450	43.5	0.87	56.7	0.94
835	41.5	0.90	55.2	0.97
900	41.5	0.97	55.0	1.05
915	41.5	0.98	55.0	1.06
1450	40.5	1.20	54.0	1.30
1610	40.3	1.29	53.8	1.40
1800-2000	40.0	1.40	53.3	1.52
2450	39.2	1.80	52.7	1.95
3000	38.5	2.40	52.0	2.73
5800	35.3	5.27	48.2	6.00

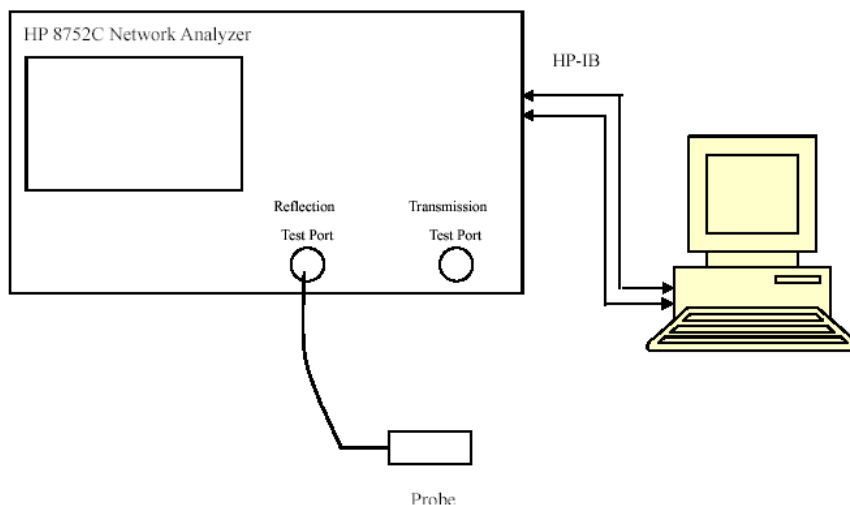
EQUIPMENT LIST AND CALIBRATION

Equipments List & Calibration Information

Equipment	Model	S/N	Calibration Date	Calibration Due Date
Robot	RX90	D03688	N/A	N/A
DASY5 Test Software	DASY52.8	N/A	N/A	N/A
DASY5 Measurement Server	DASY5 4.5.12	1567	N/A	N/A
Data Acquisition Electronics	DAE3	379	2016/10/04	2017/10/3
E-Field Probe	EX3DV4	7431	2016/10/04	2017/10/03
Dipole, 835 MHz	D835V2	453	2015/08/17	2018/08/16
Dipole, 1750 MHz	D1750V2	1140	2015/07/09	2018/07/08
Dipole, 1900 MHz	D1900V2	5d206	2015/07/14	2018/07/13
Dipole, 2600 MHz	D2600V2	1073	2013/12/09	2016/12/08
R&S, universal Radio Communication Tester	CMU200	110605	2016/11/11	2017/11/10
Wideband Radio Communication tester	CMW500	1201.002K50-116218-UY	2016/10/8	2017/10/7
Mounting Device	N/A	BJPCTC0152	N/A	N/A
Twin SAM	Twin SAM V5.0	1412	N/A	N/A
Triple Flat Phantom 5.1C	QD 000 P51 CA	1130	N/A	N/A
Simulated Tissue 835 MHz Head	TS-835-H	1610083501	Each Time	/
Simulated Tissue 835 MHz Body	TS-835-B	1610083502	Each Time	/
Simulated Tissue 1750 MHz Head	TS-1750-H	1610175001	Each Time	/
Simulated Tissue 1750 MHz Body	TS-1750-B	1610175002	Each Time	/
Simulated Tissue 1900 MHz Head	TS-1900-H	1610190001	Each Time	/
Simulated Tissue 1900 MHz Body	TS-1900-B	1610190002	Each Time	/
Simulated Tissue 2600 MHz Head	TS-2600-H	1610260001	Each Time	/
Simulated Tissue 2600 MHz Body	TS-2600-B	1610260002	Each Time	/
Network Analyzer	8753C	2828A00170	2016/10/06	2017/10/05
Dielectric probe kit	85070B	US33020324	N/A	N/A
Signal Generator	SMBV100A	261558	2016/07/04	2017/07/04
Power Meter	E4419B	MY41291878	2016/01/08	2017/01/07
Power Meter Sensor	8481A	2702A68993	2016/05/30	2017/05/29
Power Amplifier	10S1G4M1	18060	N/A	N/A
Directional Coupler	488Z	N/A	N/A	N/A
Attenuator	20dB, 100W	N/A	N/A	N/A
Attenuator	3dB, 150W	N/A	N/A	N/A

SAR MEASUREMENT SYSTEM VERIFICATION

Liquid Verification



Liquid Verification Setup Block Diagram

Liquid Verification Results

Frequency	Liquid Type	Liquid Parameter		Target Value		Delta (%)		Tolerance (%)
		ϵ_r	σ (S/m)	ϵ_r	σ (S/m)	$\Delta\epsilon_r$	$\Delta\sigma$ (S/m)	
1850.2	Simulated Tissue 1900 MHz Body	52.908	1.503	53.3	1.52	-0.735	-1.118	±5
1852.4	Simulated Tissue 1900 MHz Body	52.894	1.503	53.3	1.52	-0.762	-1.118	±5
1860	Simulated Tissue 1900 MHz Body	52.826	1.525	53.3	1.52	-0.889	0.329	±5
1880	Simulated Tissue 1900 MHz Body	52.759	1.527	53.3	1.52	-1.015	0.461	±5
1900	Simulated Tissue 1900 MHz Body	52.758	1.545	53.3	1.52	-1.017	1.645	±5
1907.6	Simulated Tissue 1900 MHz Body	52.685	1.557	53.3	1.52	-1.154	2.434	±5
1909.8	Simulated Tissue 1900 MHz Body	52.683	1.56	53.3	1.52	-1.158	2.632	±5

*Liquid Verification above was performed on 2016/11/21.

Frequency	Liquid Type	Liquid Parameter		Target Value		Delta (%)		Tolerance (%)
		ϵ_r	σ (S/m)	ϵ_r	σ (S/m)	$\Delta\epsilon_r$	$\Delta\sigma$ (S/m)	
2510	Simulated Tissue 2600 MHz Head	38.446	1.88	39.1	1.87	-1.673	0.535	±5
2535	Simulated Tissue 2600 MHz Head	38.323	1.92	39.1	1.89	-1.987	1.587	±5
2560	Simulated Tissue 2600 MHz Head	38.135	1.963	39.1	1.92	-2.468	2.24	±5
2600	Simulated Tissue 2600 MHz Head	37.698	2.004	39	1.96	-3.338	2.245	±5
2510	Simulated Tissue 2600 MHz Body	51.667	2.034	52.6	2.04	-1.774	-0.294	±5
2535	Simulated Tissue 2600 MHz Body	51.52	2.088	52.6	2.07	-2.053	0.87	±5
2560	Simulated Tissue 2600 MHz Body	51.293	2.113	52.6	2.11	-2.485	0.142	±5
2600	Simulated Tissue 2600 MHz Body	50.845	2.199	52.5	2.16	-3.152	1.806	±5

*Liquid Verification above was performed on 2016/11/24.

Frequency	Liquid Type	Liquid Parameter		Target Value		Delta (%)		Tolerance (%)
		ϵ_r	σ (S/m)	ϵ_r	σ (S/m)	$\Delta\epsilon_r$	$\Delta\sigma$ (S/m)	
1720	Simulated Tissue 1750 MHz Head	40.661	1.371	40.8	1.37	-0.341	0.073	±5
1732.5	Simulated Tissue 1750 MHz Head	40.638	1.376	40.8	1.37	-0.397	0.438	±5
1745	Simulated Tissue 1750 MHz Head	40.638	1.382	40.8	1.37	-0.397	0.876	±5
1750	Simulated Tissue 1750 MHz Head	40.586	1.415	40.8	1.37	-0.525	3.285	±5
1720	Simulated Tissue 1750 MHz Body	53.743	1.486	53.43	1.49	0.586	-0.268	±5
1732.5	Simulated Tissue 1750 MHz Body	53.718	1.468	53.43	1.49	0.539	-1.477	±5
1745	Simulated Tissue 1750 MHz Body	53.621	1.49	53.43	1.49	0.357	0	±5
1750	Simulated Tissue 1750 MHz Body	53.588	1.505	53.43	1.49	0.296	1.007	±5

*Liquid Verification above was performed on 2016/11/25.

Frequency	Liquid Type	Liquid Parameter		Target Value		Delta (%)		Tolerance (%)
		ϵ_r	σ (S/m)	ϵ_r	σ (S/m)	$\Delta\epsilon_r$	$\Delta\sigma$ (S/m)	
1850.2	Simulated Tissue 1900 MHz Head	39.77	1.387	40	1.4	-0.575	-0.929	±5
1852.4	Simulated Tissue 1900 MHz Head	39.771	1.379	40	1.4	-0.572	-1.5	±5
1860	Simulated Tissue 1900 MHz Head	39.73	1.412	40	1.4	-0.675	0.857	±5
1880	Simulated Tissue 1900 MHz Head	39.65	1.432	40	1.4	-0.875	2.286	±5
1900	Simulated Tissue 1900 MHz Head	39.524	1.429	40	1.4	-1.19	2.071	±5
1907.6	Simulated Tissue 1900 MHz Head	39.518	1.432	40	1.4	-1.205	2.286	±5
1909.8	Simulated Tissue 1900 MHz Head	39.502	1.446	40	1.4	-1.245	3.286	±5

*Liquid Verification above was performed on 2016/11/26.

Frequency	Liquid Type	Liquid Parameter		Target Value		Delta (%)		Tolerance (%)
		ϵ_r	σ (S/m)	ϵ_r	σ (S/m)	$\Delta\epsilon_r$	$\Delta\sigma$ (S/m)	
824.2	Simulated Tissue 835 MHz Head	42.485	0.867	41.5	0.9	2.373	-3.667	±5
826.4	Simulated Tissue 835 MHz Head	42.467	0.888	41.5	0.9	2.33	-1.333	±5
829	Simulated Tissue 835 MHz Head	42.46	0.886	41.5	0.9	2.313	-1.556	±5
835	Simulated Tissue 835 MHz Head	42.517	0.883	41.5	0.9	2.451	-1.889	±5
836.5	Simulated Tissue 835 MHz Head	42.471	0.885	41.5	0.9	2.34	-1.667	±5
836.6	Simulated Tissue 835 MHz Head	42.458	0.899	41.5	0.9	2.308	-0.111	±5
844	Simulated Tissue 835 MHz Head	42.267	0.902	41.5	0.9	1.848	0.222	±5
846.6	Simulated Tissue 835 MHz Head	42.385	0.895	41.5	0.9	2.133	-0.556	±5
848.8	Simulated Tissue 835 MHz Head	42.283	0.901	41.5	0.9	1.887	0.111	±5

*Liquid Verification above was performed on 2016/11/26.

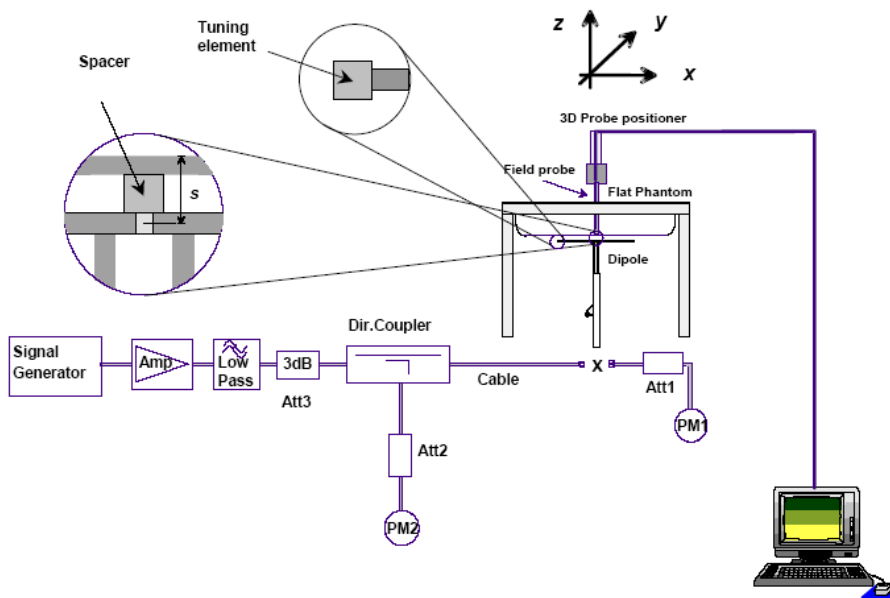
Frequency	Liquid Type	Liquid Parameter		Target Value		Delta (%)		Tolerance (%)
		ϵ_r	σ (S/m)	ϵ_r	σ (S/m)	$\Delta\epsilon_r$	$\Delta\sigma$ (S/m)	
824.2	Simulated Tissue 835 MHz Body	54.632	0.969	55.2	0.97	-1.029	-0.103	±5
826.4	Simulated Tissue 835 MHz Body	54.573	0.996	55.2	0.97	-1.136	2.68	±5
829	Simulated Tissue 835 MHz Body	54.583	0.984	55.2	0.97	-1.118	1.443	±5
835	Simulated Tissue 835 MHz Body	54.585	0.986	55.2	0.97	-1.114	1.649	±5
836.5	Simulated Tissue 835 MHz Body	54.581	0.977	55.2	0.97	-1.121	0.722	±5
836.6	Simulated Tissue 835 MHz Body	54.58	0.984	55.2	0.97	-1.123	1.443	±5
844	Simulated Tissue 835 MHz Body	54.591	0.985	55.2	0.97	-1.103	1.546	±5
846.6	Simulated Tissue 835 MHz Body	54.454	0.984	55.2	0.97	-1.351	1.443	±5
848.8	Simulated Tissue 835 MHz Body	54.417	0.99	55.2	0.97	-1.418	2.062	±5

*Liquid Verification above was performed on 2016/11/27.

System Accuracy Verification

Prior to the assessment, the system validation kit was used to test whether the system was operating within its specifications of $\pm 10\%$. The validation results are tabulated below. And also the corresponding SAR plot is attached as well in the SAR plots files.

System Verification Setup Block Diagram



System Accuracy Check Results

Date	Frequency Band	Liquid Type	Measured SAR (W/Kg)	Target Value (W/Kg)	Delta (%)	Tolerance (%)
2016/11/26	835	835MHz Head	1g 9.87	9.43	4.67	± 10
2016/11/27	835	835MHz Body	1g 9.57	9.55	0.21	± 10
2016/11/25	1750	1750MHz Head	1g 37.4	36.8	1.63	± 10
		1750MHz Body	1g 36.9	37.2	-0.81	± 10
2016/11/26	1900	1900MHz Head	1g 39.3	40.7	-3.44	± 10
2016/11/21	1900	1900MHz Body	1g 41.5	40.8	1.72	± 10
2016/11/24	2600	2600MHz Head	1g 57.7	57.4	0.52	± 10
		2600MHz Body	1g 58	55.4	4.69	± 10

SAR SYSTEM VALIDATION DATA

Test Laboratory: Bay Area Compliance Labs Corp.(Kunshan)

System Performance 835 MHz Head

DUT: D835V2; Type: 835 MHz; Serial: 453

Communication System: CW; Frequency: 835 MHz; Duty Cycle: 1:1

Medium parameters used: $f = 835 \text{ MHz}$; $\sigma = 0.883 \text{ S/m}$; $\epsilon_r = 42.517$; $\rho = 1000 \text{ kg/m}^3$

Phantom section: Flat Section

DASY5 Configuration:

- Probe: EX3DV4 - SN7431; ConvF(9.84, 9.84, 9.84); Calibrated: 2016/10/4;
- Sensor-Surface: 4mm (Mechanical Surface Detection)
- Electronics: DAE3 Sn379; Calibrated: 2016/10/4
- Phantom: SAM 1; Type: QD000P40CC; Serial: TP:1412
- Measurement SW: DASY52, Version 52.8 (8);

System Performance 835 MHz Head /Area Scan (61x101x1): Interpolated grid: $dx=1.500 \text{ mm}$, $dy=1.500 \text{ mm}$
 Maximum value of SAR (interpolated) = 10.7 W/kg

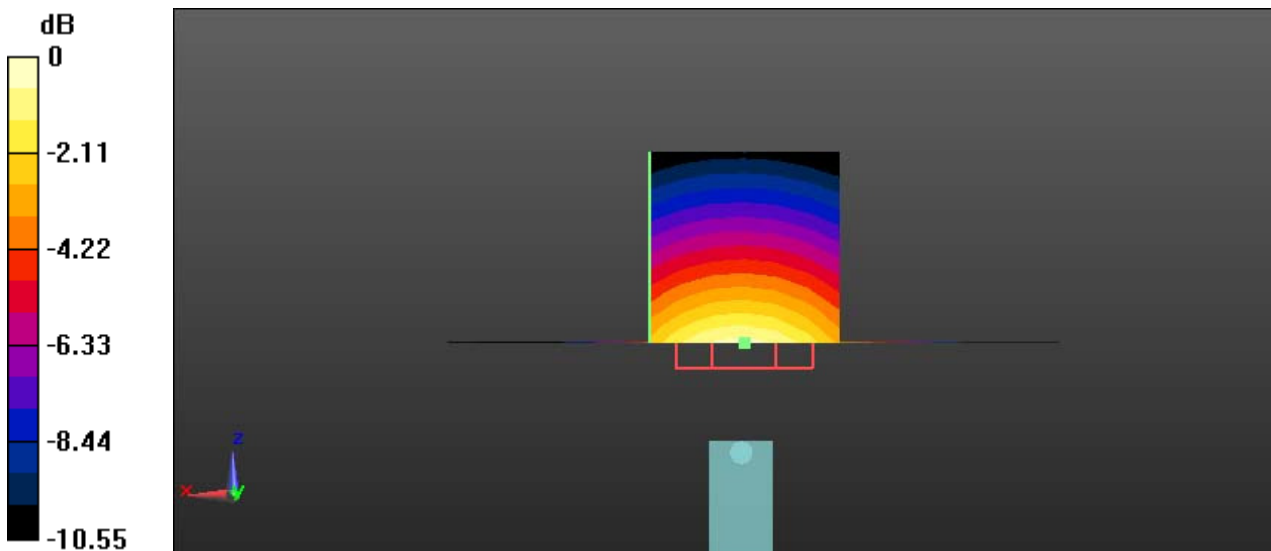
System Performance 835 MHz Head /Zoom Scan (7x7x7)/Cube 0: Measurement grid: $dx=5\text{mm}$, $dy=5\text{mm}$, $dz=5\text{mm}$

Reference Value = 104.2 V/m; Power Drift = 0.04 dB

Peak SAR (extrapolated) = 14.8 W/kg

SAR(1 g) = 9.87 W/kg; SAR(10 g) = 6.25 W/kg

Maximum value of SAR (measured) = 11.0 W/kg



0 dB = 11.0 W/kg = 10.41 dBW/kg

Test Laboratory: Bay Area Compliance Labs Corp.(Kunshan)

System Performance 835 MHz Body

D UT: D835V2; Type: 835 MHz; Serial: 453

Communication System: CW; Frequency: 835 MHz; Duty Cycle: 1:1
 Medium parameters used: $f = 835 \text{ MHz}$; $\sigma = 0.986 \text{ S/m}$; $\epsilon_r = 54.585$; $\rho = 1000 \text{ kg/m}^3$
 Phantom section: Right Section

DASY5 Configuration:

- Probe: EX3DV4 - SN7431; ConvF(9.89, 9.89, 9.89); Calibrated: 2016/10/4;
- Sensor-Surface: 4mm (Mechanical Surface Detection)
- Electronics: DAE3 Sn379; Calibrated: 2016/10/4
- Phantom: Triple Flat Phantom 5.1C; Type: QD 000 P51 CA; Serial: 1130
- Measurement SW: DASY52, Version 52.8 (8);

System Performance 835 MHz Body /Area Scan (61x101x1): Interpolated grid: $dx=1.500 \text{ mm}$, $dy=1.500 \text{ mm}$
 Maximum value of SAR (interpolated) = 11.3 W/kg

System Performance 835 MHz Body /Zoom Scan (7x7x7)/Cube 0: Measurement grid: $dx=5\text{mm}$, $dy=5\text{mm}$, $dz=5\text{mm}$

Reference Value = 105.7 V/m; Power Drift = 0.08 dB

Peak SAR (extrapolated) = 15.3 W/kg

SAR(1 g) = 9.57 W/kg; SAR(10 g) = 6.17 W/kg

Maximum value of SAR (measured) = 11.1 W/kg



0 dB = 11.1 W/kg = 10.45 dBW/kg

Test Laboratory: Bay Area Compliance Labs Corp.(Kunshan)

System Performance 1750 MHz Head

DUT: D1750V2; Type: 1750 MHz; Serial: 1140

Communication System: CW; Frequency: 1750 MHz; Duty Cycle: 1:1
 Medium parameters used: $f = 1750 \text{ MHz}$; $\sigma = 1.415 \text{ S/m}$; $\epsilon_r = 40.586$; $\rho = 1000 \text{ kg/m}^3$
 Phantom section: Flat Section

DASY5 Configuration:

- Probe: EX3DV4 - SN7431; ConvF(8.47, 8.47, 8.47); Calibrated: 2016/10/4;
- Sensor-Surface: 4mm (Mechanical Surface Detection)
- Electronics: DAE3 Sn379; Calibrated: 2016/10/4
- Phantom: SAM 1; Type: QD000P40CC; Serial: TP:1412
- Measurement SW: DASY52, Version 52.8 (8);

System Performance 1750 MHz Head /Area Scan (61x81x1): Interpolated grid: $dx=1.500 \text{ mm}$, $dy=1.500 \text{ mm}$
 Maximum value of SAR (interpolated) = 42.6 W/kg

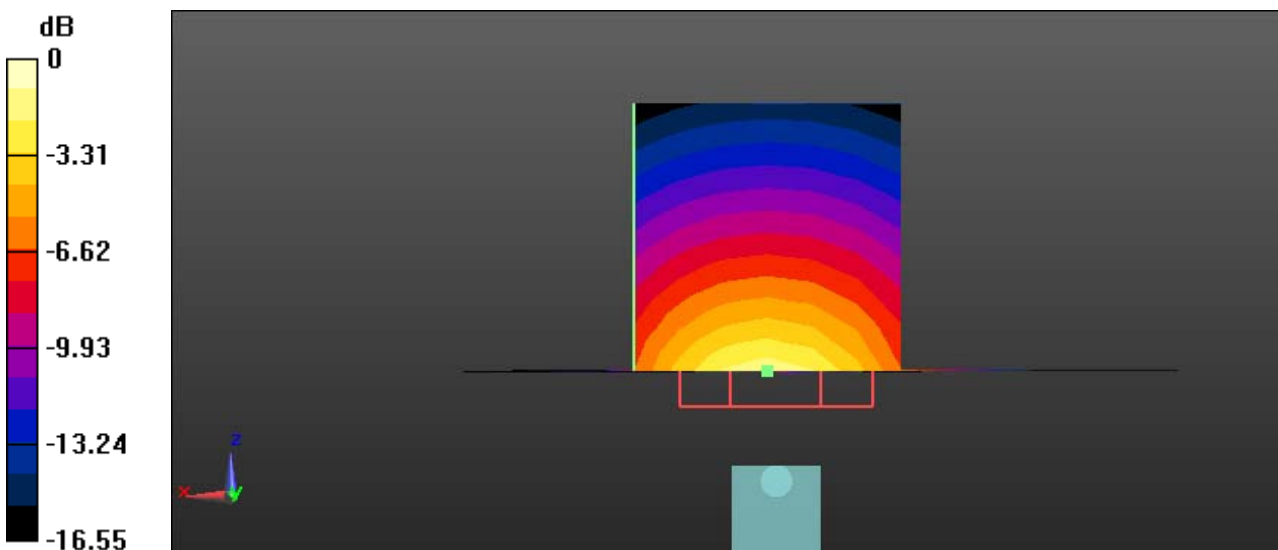
System Performance 1750 MHz Head /Zoom Scan (7x7x7)/Cube 0: Measurement grid: $dx=5\text{mm}$, $dy=5\text{mm}$, $dz=5\text{mm}$

Reference Value = 151.7 V/m; Power Drift = -0.03 dB

Peak SAR (extrapolated) = 70.2 W/kg

SAR(1 g) = 37.4 W/kg; SAR(10 g) = 19.5 W/kg

Maximum value of SAR (measured) = 42.3 W/kg



0 dB = 42.3 W/kg = 16.26 dBW/kg

Test Laboratory: Bay Area Compliance Labs Corp.(Kunshan)

System Performance 1750 MHz Body

DUT: D1750V2; Type: 1750 MHz; Serial: 1140

Communication System: CW; Frequency: 1750 MHz; Duty Cycle: 1:1
 Medium parameters used: $f = 1750 \text{ MHz}$; $\sigma = 1.505 \text{ S/m}$; $\epsilon_r = 53.588$; $\rho = 1000 \text{ kg/m}^3$
 Phantom section: Left Section

DASY5 Configuration:

- Probe: EX3DV4 - SN7431; ConvF(8.24, 8.24, 8.24); Calibrated: 2016/10/4;
- Sensor-Surface: 4mm (Mechanical Surface Detection)
- Electronics: DAE3 Sn379; Calibrated: 2016/10/4
- Phantom: Triple Flat Phantom 5.1C; Type: QD 000 P51 CA; Serial: 1130
- Measurement SW: DASY52, Version 52.8 (8);

System Performance 1750 MHz Body /Area Scan (61x81x1): Interpolated grid: $dx=1.500 \text{ mm}$, $dy=1.500 \text{ mm}$
 Maximum value of SAR (interpolated) = 41.7 W/kg

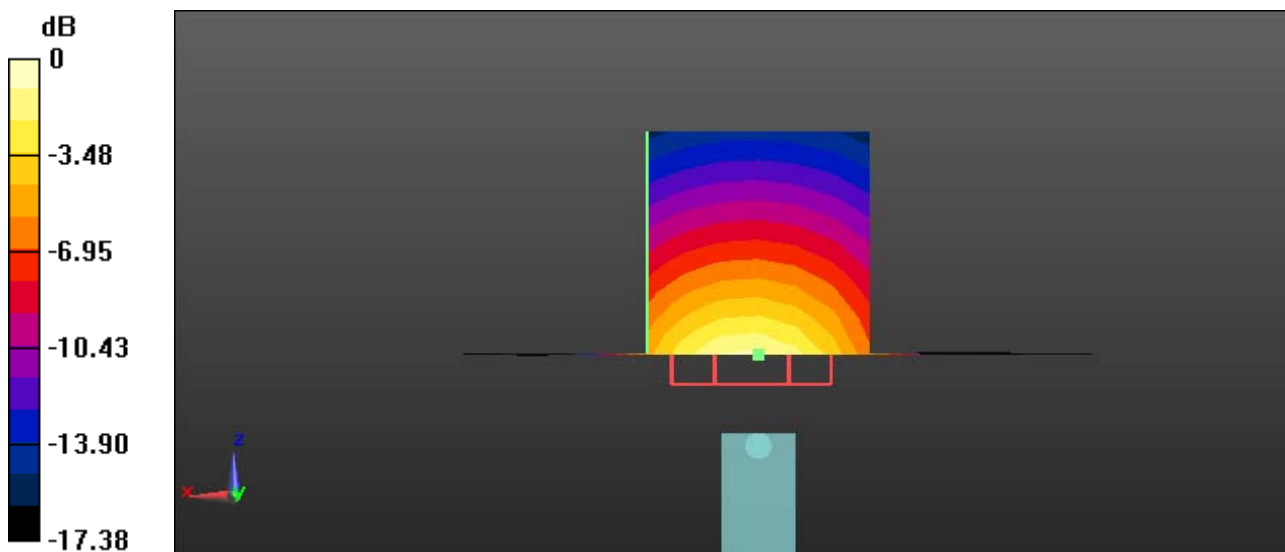
System Performance 1750 MHz Body /Zoom Scan (7x7x7)/Cube 0: Measurement grid: $dx=5\text{mm}$, $dy=5\text{mm}$, $dz=5\text{mm}$

Reference Value = 162.3 V/m; Power Drift = -0.15 dB

Peak SAR (extrapolated) = 68.7 W/kg

SAR(1 g) = 36.9 W/kg; SAR(10 g) = 19.4 W/kg

Maximum value of SAR (measured) = 41.2 W/kg



0 dB = 41.2 W/kg = 16.15 dBW/kg

Test Laboratory: Bay Area Compliance Labs Corp.(Kunshan)

System Performance 1900 MHz Head

DUT: D1900V2; Type: 1900 MHz; Serial: 5d206

Communication System: CW; Frequency: 1900 MHz; Duty Cycle: 1:1

Medium parameters used: $f = 1900 \text{ MHz}$; $\sigma = 1.429 \text{ S/m}$; $\epsilon_r = 39.524$; $\rho = 1000 \text{ kg/m}^3$

Phantom section: Flat Section

DASY5 Configuration:

- Probe: EX3DV4 - SN7431; ConvF(8.18, 8.18, 8.18); Calibrated: 2016/10/4;
- Sensor-Surface: 4mm (Mechanical Surface Detection)
- Electronics: DAE3 Sn379; Calibrated: 2016/10/4
- Phantom: SAM 1; Type: QD000P40CC; Serial: TP:1412
- Measurement SW: DASY52, Version 52.8 (8);

System Performance 1900 MHz Head /Area Scan (61x81x1): Interpolated grid: $dx=1.500 \text{ mm}$, $dy=1.500 \text{ mm}$

Maximum value of SAR (interpolated) = 44.9 W/kg

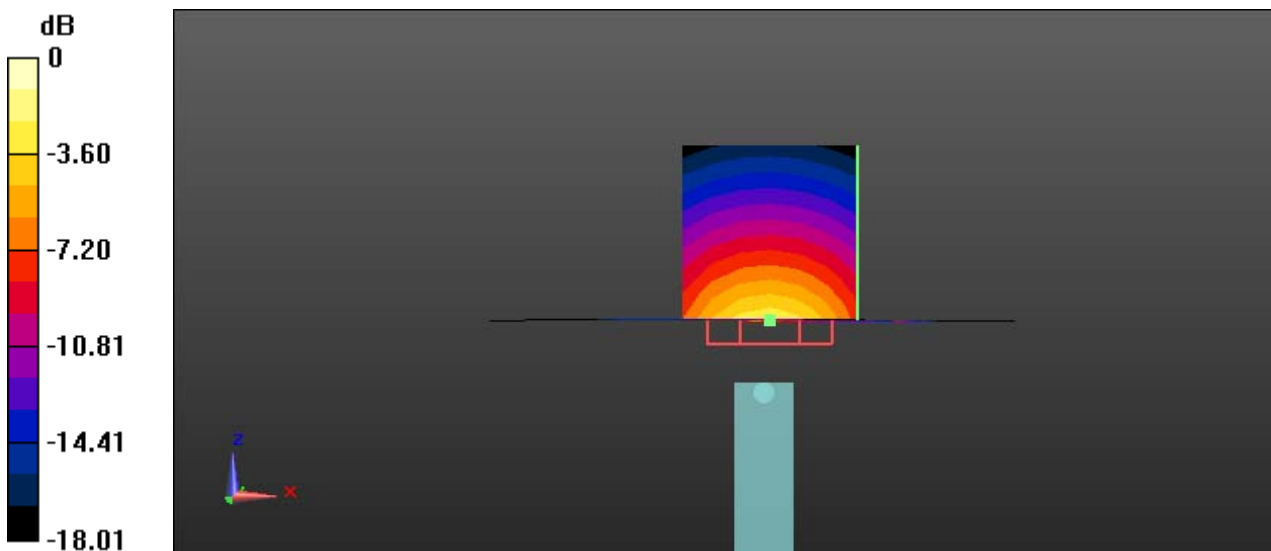
System Performance 1900 MHz Head /Zoom Scan (7x7x7)/Cube 0: Measurement grid: $dx=5\text{mm}$, $dy=5\text{mm}$, $dz=5\text{mm}$

Reference Value = 168.3 V/m; Power Drift = 0.06 dB

Peak SAR (extrapolated) = 74.1 W/kg

SAR(1 g) = 39.3 W/kg; SAR(10 g) = 20.3 W/kg

Maximum value of SAR (measured) = 44.5 W/kg



0 dB = 44.5 W/kg = 16.48 dBW/kg

Test Laboratory: Bay Area Compliance Labs Corp.(Kunshan)

System Performance 1900 MHz Body

DUT: D1900V2; Type: 1900 MHz; Serial: 5d206

Communication System: CW; Frequency: 1900 MHz; Duty Cycle: 1:1
 Medium parameters used: $f = 1900 \text{ MHz}$; $\sigma = 1.545 \text{ S/m}$; $\epsilon_r = 52.758$; $\rho = 1000 \text{ kg/m}^3$
 Phantom section: Left Section

DASY5 Configuration:

- Probe: EX3DV4 - SN7431; ConvF(7.98, 7.98, 7.98); Calibrated: 2016/10/4;
- Sensor-Surface: 4mm (Mechanical Surface Detection)
- Electronics: DAE3 Sn379; Calibrated: 2016/10/4
- Phantom: Triple Flat Phantom 5.1C; Type: QD 000 P51 CA; Serial: 1130
- Measurement SW: DASY52, Version 52.8 (8);

System Performance 1900 MHz Body /Area Scan (61x81x1): Interpolated grid: $dx=1.500 \text{ mm}$, $dy=1.500 \text{ mm}$
 Maximum value of SAR (interpolated) = 48.4 W/kg

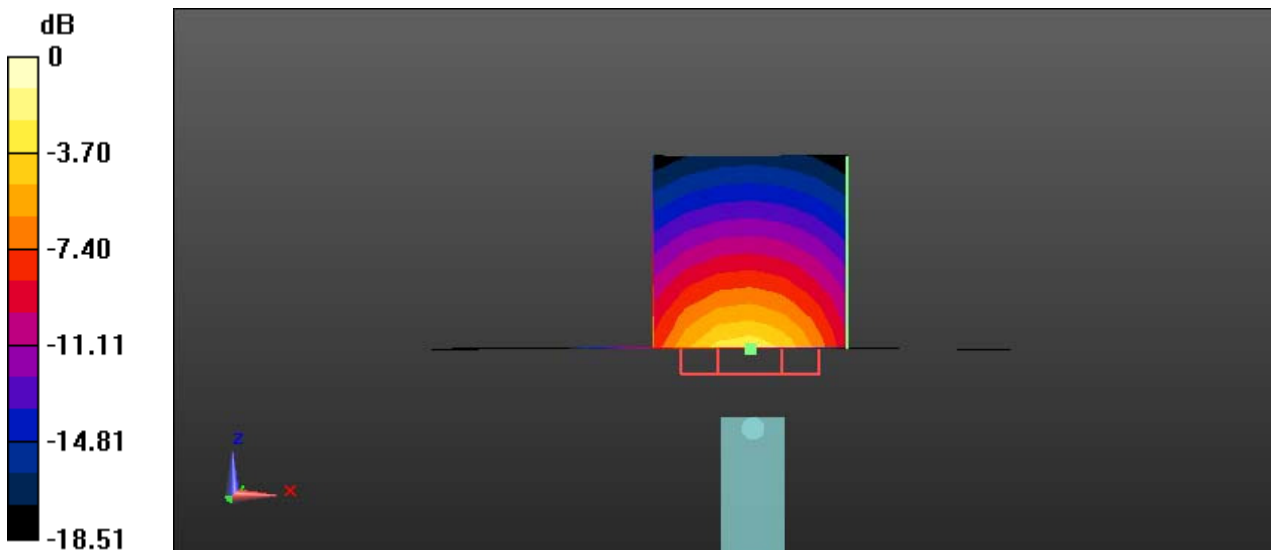
System Performance 1900 MHz Body /Zoom Scan (7x7x7)/Cube 0: Measurement grid: $dx=5\text{mm}$, $dy=5\text{mm}$, $dz=5\text{mm}$

Reference Value = 173.2 V/m; Power Drift = 0.11 dB

Peak SAR (extrapolated) = 79.1 W/kg

SAR(1 g) = 41.5 W/kg; SAR(10 g) = 21.7 W/kg

Maximum value of SAR (measured) = 46.4 W/kg



0 dB = 46.4 W/kg = 16.67 dBW/kg

Test Laboratory: Bay Area Compliance Labs Corp.(Kunshan)

System Performance 2600 MHz Head

DUT: D2600V2; Type: 2600 MHz; Serial: 1073

Communication System: CW; Frequency: 2600 MHz; Duty Cycle: 1:1

Medium parameters used: $f = 2600 \text{ MHz}$; $\sigma = 2.004 \text{ S/m}$; $\epsilon_r = 37.698$; $\rho = 1000 \text{ kg/m}^3$

Phantom section: Flat Section

DASY5 Configuration:

- Probe: EX3DV4 - SN7431; ConvF(7.44, 7.44, 7.44); Calibrated: 2016/10/4;
- Sensor-Surface: 4mm (Mechanical Surface Detection)
- Electronics: DAE3 Sn379; Calibrated: 2016/10/4
- Phantom: SAM 1; Type: QD000P40CC; Serial: TP:1412
- Measurement SW: DASY52, Version 52.8 (8);

System Performance 2600 MHz Head /Area Scan (61x71x1): Interpolated grid: $dx=1.000 \text{ mm}$, $dy=1.000 \text{ mm}$

Maximum value of SAR (interpolated) = 65.2 W/kg

System Performance 2600 MHz Head /Zoom Scan (7x7x7)/Cube 0: Measurement grid: $dx=5\text{mm}$, $dy=5\text{mm}$,

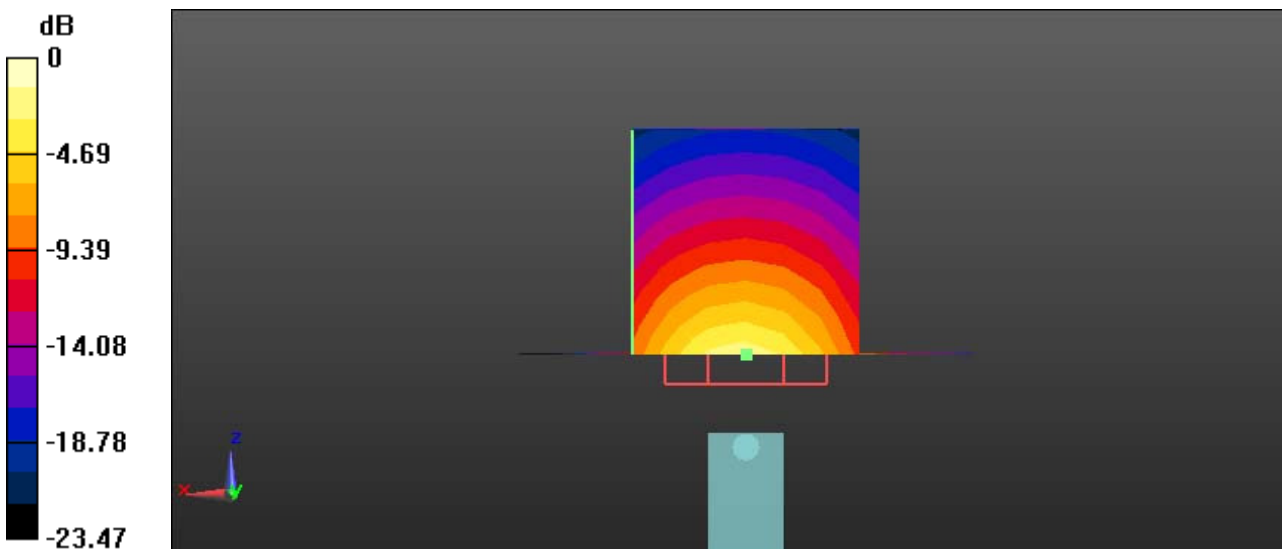
$dz=5\text{mm}$

Reference Value = 174.7 V/m; Power Drift = 0.03 dB

Peak SAR (extrapolated) = 139 W/kg

SAR(1 g) = 57.7 W/kg; SAR(10 g) = 25.3 W/kg

Maximum value of SAR (measured) = 65.9 W/kg



0 dB = 65.9 W/kg = 18.19 dBW/kg

Test Laboratory: Bay Area Compliance Labs Corp.(Kunshan)

System Performance 2600 MHz Body

DUT: D2600V2; Type: 2600 MHz; Serial: 1073

Communication System: CW; Frequency: 2600 MHz; Duty Cycle: 1:1
 Medium parameters used: $f = 2600 \text{ MHz}$; $\sigma = 2.199 \text{ S/m}$; $\epsilon_r = 50.845$; $\rho = 1000 \text{ kg/m}^3$
 Phantom section: Center Section

DASY5 Configuration:

- Probe: EX3DV4 - SN7431; ConvF(7.47, 7.47, 7.47); Calibrated: 2016/10/4;
- Sensor-Surface: 4mm (Mechanical Surface Detection)
- Electronics: DAE3 Sn379; Calibrated: 2016/10/4
- Phantom: Triple Flat Phantom 5.1C; Type: QD 000 P51 CA; Serial: 1130
- Measurement SW: DASY52, Version 52.8 (8);

System Performance 2600 MHz Body /Area Scan (61x71x1): Interpolated grid: $dx=1.000 \text{ mm}$, $dy=1.000 \text{ mm}$
 Maximum value of SAR (interpolated) = 66.9 W/kg

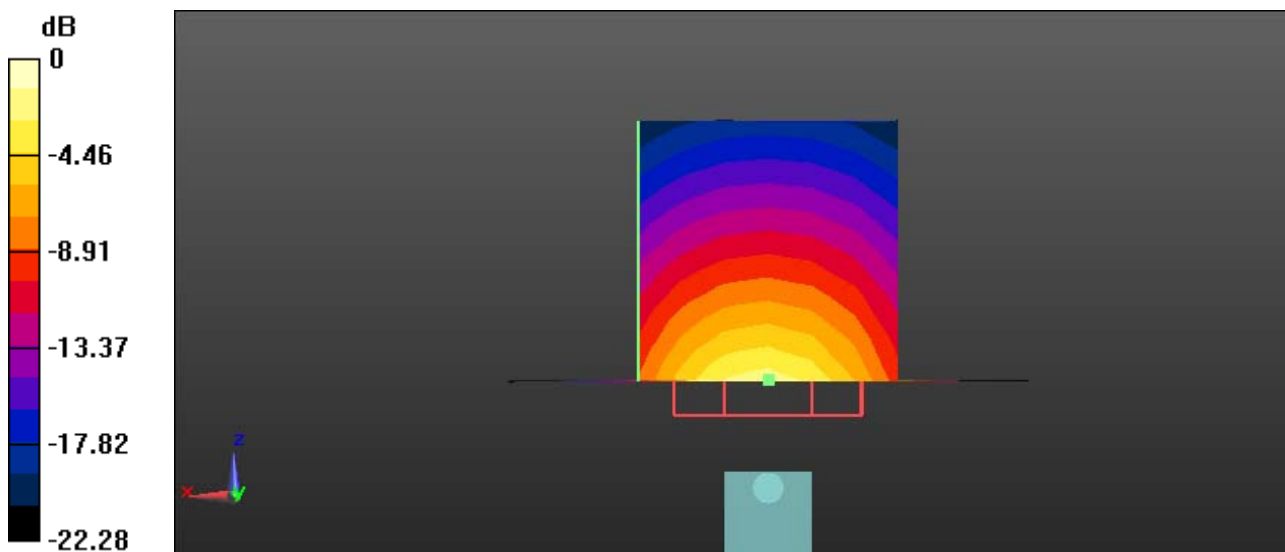
System Performance 2600 MHz Body /Zoom Scan (7x7x7)/Cube 0: Measurement grid: $dx=5\text{mm}$, $dy=5\text{mm}$, $dz=5\text{mm}$

Reference Value = 175.4 V/m; Power Drift = 0.03 dB

Peak SAR (extrapolated) = 132 W/kg

SAR(1 g) = 58 W/kg; SAR(10 g) = 25.3 W/kg

Maximum value of SAR (measured) = 67.2 W/kg



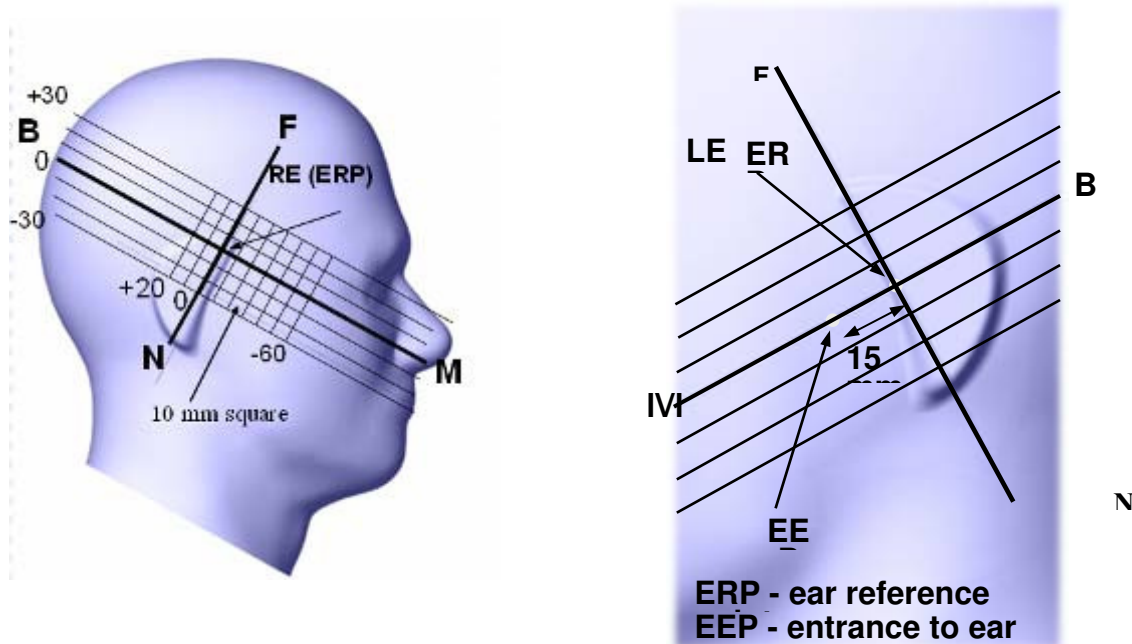
0 dB = 67.2 W/kg = 18.27 dBW/kg

EUT TEST STRATEGY AND METHODOLOGY

Test Positions for Device Operating Next to a Person’s Ear

This category includes most wireless handsets with fixed, retractable or internal antennas located toward the top half of the device, with or without a foldout, sliding or similar keypad cover. The handset should have its earpiece located within the upper ¼ of the device, either along the centerline or off-centered, as perceived by its users. This type of handset should be positioned in a normal operating position with the “test device reference point” located along the “vertical centerline” on the front of the device aligned to the “ear reference point”. The “test device reference point” should be located at the same level as the center of the earpiece region. The “vertical centerline” should bisect the front surface of the handset at its top and bottom edges. A “ear reference point” is located on the outer surface of the head phantom on each ear spacer. It is located 1.5 cm above the center of the ear canal entrance in the “phantom reference plane” defined by the three lines joining the center of each “ear reference point” (left and right) and the tip of the mouth.

A handset should be initially positioned with the earpiece region pressed against the ear spacer of a head phantom. For the SCC-34/SC-2 head phantom, the device should be positioned parallel to the “N-F” line defined along the base of the ear spacer that contains the “ear reference point”. For interim head phantoms, the device should be positioned parallel to the cheek for maximum RF energy coupling. The “test device reference point” is aligned to the “ear reference point” on the head phantom and the “vertical centerline” is aligned to the “phantom reference plane”. This is called the “initial ear position”. While maintaining these three alignments, the body of the handset is gradually adjusted to each of the following positions for evaluating SAR:



Cheek/Touch Position

The device is brought toward the mouth of the head phantom by pivoting against the “ear reference point” or along the “N-F” line for the SCC-34/SC-2 head phantom.

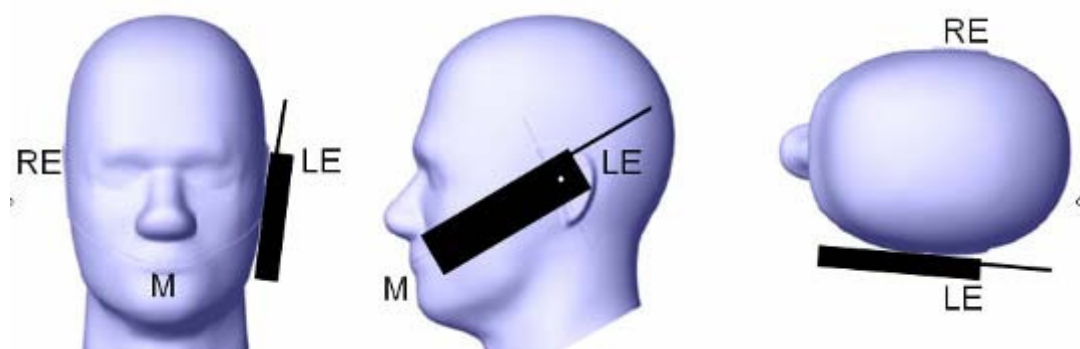
This test position is established:

When any point on the display, keypad or mouthpiece portions of the handset is in contact with the phantom.

(or) When any portion of a foldout, sliding or similar keypad cover opened to its intended self-adjusting normal use position is in contact with the cheek or mouth of the phantom.

For existing head phantoms – when the handset loses contact with the phantom at the pivoting point, rotation should continue until the device touches the cheek of the phantom or breaks its last contact from the ear spacer.

Cheek /Touch Position



Ear/Tilt Position

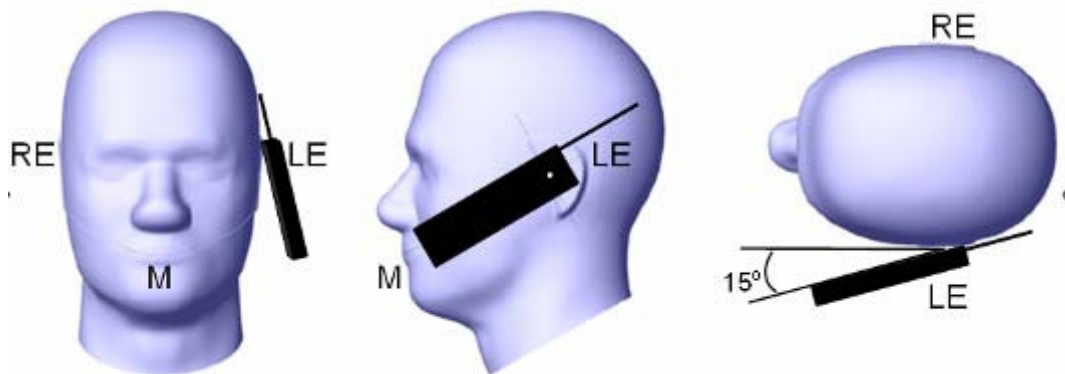
With the handset aligned in the “Cheek/Touch Position”:

1) If the earpiece of the handset is not in full contact with the phantom’s ear spacer (in the “Cheek/Touch position”) and the peak SAR location for the “Cheek/Touch” position is located at the ear spacer region or corresponds to the earpiece region of the handset, the device should be returned to the “initial ear position” by rotating it away from the mouth until the earpiece is in full contact with the ear spacer.

2) (otherwise) The handset should be moved (translated) away from the cheek perpendicular to the line passes through both “ear reference points” (note: one of these ear reference points may not physically exist on a split head model) for approximate 2-3 cm. While it is in this position, the device handset is tilted away from the mouth with respect to the “test device reference point” until the inside angle between the vertical centerline on the front surface of the phone and the horizontal line passing through the ear reference point is by 15° to 80° . After the tilt, it is then moved (translated) back toward the head perpendicular to the line passes through both “ear reference points” until the device touches the phantom or the ear spacer. If the antenna touches the head first, the positioning process should be repeated with a tilt angle less than 15° so that the device and its antenna would touch the phantom simultaneously. This test position may require a device holder or positioner to achieve the translation and tilting with acceptable positioning repeatability.

If a device is also designed to transmit with its keypad cover closed for operating in the head position, such positions should also be considered in the SAR evaluation. The device should be tested on the left and right side of the head phantom in the “Cheek/Touch” and “Ear/Tilt” positions. When applicable, each configuration should be tested with the antenna in its fully extended and fully retracted positions. These test configurations should be tested at the high, middle and low frequency channels of each operating mode; for example, AMPS, CDMA, and TDMA. If the SAR measured at the middle channel for each test configuration (left, right, Cheek/Touch, Tilt/Ear, extended and retracted) is at least 2.0 dB lower than the SAR limit, testing at the high and low channels is optional for such test configuration(s). If the transmission band of the test device is less than 10 MHz, testing at the high and low frequency channels is optional.

Ear /Tilt 15° Position



Test positions for body-worn and other configurations

Body-worn operating configurations should be tested with the belt-clips and holsters attached to the device and positioned against a flat phantom in normal use configurations. Devices with a headset output should be tested with a headset connected to the device. When multiple accessories that do not contain metallic components are supplied with the device, the device may be tested with only the accessory that dictates the closest spacing to the body. When multiple accessories that contain metallic components are supplied with the device, the device must be tested with each accessory that contains a unique metallic component. If multiple accessories share an identical metallic component (e.g., the same metallic belt-clip used with different holsters with no other metallic components), only the accessory that dictates the closest spacing to the body must be tested.

Body-worn accessories may not always be supplied or available as options for some devices that are intended to be authorized for body-worn use. A separation distance of 1.5 cm between the back of the device and a flat phantom is recommended for testing body-worn SAR compliance under such circumstances. Other separation distances may be used, but they should not exceed 2.5 cm. In these cases, the device may use body-worn accessories that provide a separation distance greater than that tested for the device provided however that the accessory contains no metallic components.

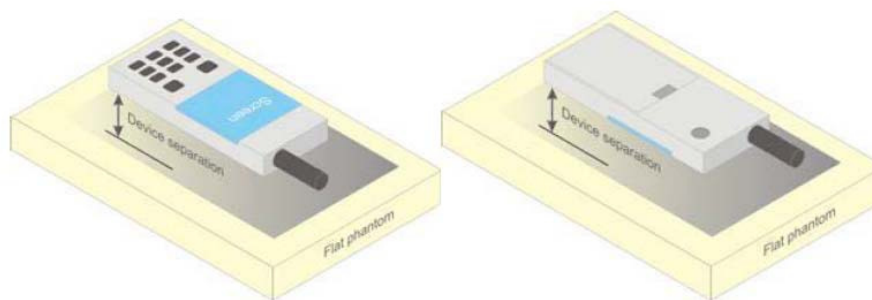


Figure 5 – Test positions for body-worn devices

SAR Evaluation Procedure

The evaluation was performed with the following procedure:

Step 1: Measurement of the SAR value at a fixed location above the ear point or central position was used as a reference value for assessing the power drop. The SAR at this point is measured at the start of the test and then again at the end of the testing.

Step 2: The SAR distribution at the exposed side of the head was measured at a distance of 4 mm from the inner surface of the shell. The area covered the entire dimension of the head or radiating structures of the EUT, the horizontal grid spacing was 15 mm x 15 mm, and the SAR distribution was determined by integrated grid of 1.5mm x 1.5mm. Based on these data, the area of the maximum absorption was determined by spline interpolation. The first Area Scan covers the entire dimension of the EUT to ensure that the hotspot was correctly identified.

Step 3: Around this point, a volume of 30 mm x 30 mm x 30 mm was assessed by measuring 7x 7 x 7 points. On the basis of this data set, the spatial peak SAR value was evaluated under the following procedure:

1) The data at the surface were extrapolated, since the center of the dipoles is 1.2 mm away from the tip of the probe and the distance between the surface and the lowest measuring point is 1.3 mm. The extrapolation was based on a least square algorithm. A polynomial of the fourth order was calculated through the points in z-axes. This polynomial was then used to evaluate the points between the surface and the probe tip.

2) The maximum interpolated value was searched with a straightforward algorithm. Around this maximum the SAR values averaged over the spatial volumes (1 g or 10 g) were computed by the 3D-Spline interpolation algorithm. The 3D-Spline is composed of three one dimensional splines with the "Not a knot"-condition (in x, y and z-directions). The volume was integrated with the trapezoidal-algorithm. One thousand points (10 x 10 x 10) were interpolated to calculate the averages.

All neighboring volumes were evaluated until no neighboring volume with a higher average value was found.

Step 4: Re-measurement of the SAR value at the same location as in Step 1. If the value changed by more than 5%, the evaluation was repeated.

Test methodology

KDB 447498 D01 General RF Exposure Guidance v06
KDB 648474 D04 Handset SAR v01r03
KDB 865664 D01 SAR Measurement 100 MHz to 6 GHz v01r04
KDB 865664 D02 RF Exposure Reporting v01r02
KDB 941225 D01 3G SAR Procedures v03r01
KDB 941225 D05 SAR for LTE Devices v02r04
KDB 941225 D06 Hotspot Mode v02r01

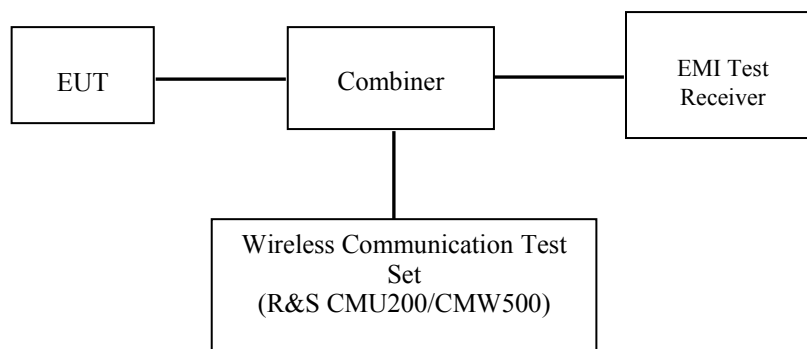
CONDUCTED OUTPUT POWER MEASUREMENT

Provision Applicable

The measured peak output power should be greater and within 5% than EMI measurement.

Test Procedure

The RF output of the transmitter was connected to the input of the EMI Test Receiver through sufficient attenuation.



GSM/WCDMA/LTE

Radio Configuration

The power measurement was configured by the Wireless Communication Test Set.

GSM/GPRS/EGPRS

Function: Menu select > GSM Mobile Station > GSM 850/1900

Press Connection control to choose the different menus

Press RESET > choose all the reset all settings

Connection Press Signal Off to turn off the signal and change settings

Network Support > GSM + GPRS or GSM + EGSM

Main Service > Packet Data

Service selection > Test Mode A – Auto Slot Config. off

MS Signal Press Slot Config Bottom on the right twice to select and change the number of time slots and power setting

> Slot configuration > Uplink/Gamma

> 33 dBm for GPRS 850

> 30 dBm for GPRS 1900

> 27 dBm for EGPRS 850

> 26 dBm for EGPRS 1900

BS Signal Enter the same channel number for TCH channel (test channel) and BCCH channel

Frequency Offset > + 0 Hz

Mode > BCCH and TCH

BCCH Level > -85 dBm (May need to adjust if link is not stable)

BCCH Channel > choose desired test channel [Enter the same channel number for TCH channel (test channel) and BCCH channel]

Channel Type > Off

P0 > 4 dB

Slot Config > Unchanged (if already set under MS signal)

TCH > choose desired test channel

Hopping > Off

Main Timeslot > 3

Network Coding Scheme > CS4 (GPRS) and MCS5 (EGPRS)

Bit Stream > 2E9-1 PSR Bit Stream

AF/RF Enter appropriate offsets for Ext. Att. Output and Ext. Att. Input

Connection Press Signal on to turn on the signal and change settings

WCDMA Release 99

The following tests were conducted according to the test requirements outlines in section 5.2 of the 3GPP TS34.121-1 specification. The EUT has a nominal maximum output power of 24dBm (+1.7/-3.7).

WCDMA General Settings	Loopback Mode	Test Mode 1
	Rel99 RMC	12.2kbps RMC
	Power Control Algorithm	Algorithm2
	β_c/β_d	8/15

HSDPA

The following tests were conducted according to the test requirements outlines in section 5.2 of the 3GPP TS34.121-1 specification.

	Mode	HSDPA	HSDPA	HSDPA	HSDPA
	Subset	1	2	3	4
WCDMA General Settings	Loopback Mode	Test Mode 1			
	Rel99 RMC	12.2kbps RMC			
	HSDPA FRC	H-Set1			
	Power Control Algorithm	Algorithm2			
	β_c	2/15	12/15	15/15	15/15
	β_d	15/15	15/15	8/15	4/15
	$\beta_d(SF)$	64			
	β_c/β_d	2/15	12/15	15/8	15/4
	β_{hs}	4/15	24/15	30/15	30/15
MPR(dB)	0	0	0.5	0.5	
HSDPA Specific Settings	DACK	8			
	DNAK	8			
	DCQI	8			
	Ack-Nack repetition factor	3			
	CQI Feedback	4ms			
	CQI Repetition Factor	2			
	$A_{hs}=\beta_{hs}/\beta_c$	30/15			

HSUPA

The following tests were conducted according to the test requirements outlines in section 5.2 of the 3GPP TS34.121-1 specification.

	Mode	HSUPA	HSUPA	HSUPA	HSUPA	HSUPA
	Subset	1	2	3	4	5
WCDMA General Settings	Loopback Mode	Test Mode 1				
	Rel99 RMC	12.2kbps RMC				
	HSDPA FRC	H-Set1				
	HSUPA Test	HSUPA Loopback				
	Power Control Algorithm	Algorithm2				
	β_c	11/15	6/15	15/15	2/15	15/15
	β_d	15/15	15/15	9/15	15/15	0
	β_{cc}	209/225	12/15	30/15	2/15	5/15
	β_c / β_d	11/15	6/15	15/9	2/15	-
	β_{hs}	22/15	12/15	30/15	4/15	5/15
	CM(dB)	1.0	3.0	2.0	3.0	1.0
MPR(dB)	0	2	1	2	0	
HSDPA Specific Settings	DACK	8				
	DNAK	8				
	DCQI	8				
	Ack-Nack repetition factor	3				
	CQI Feedback	4ms				
	CQI Repetition Factor	2				
	$A_{hs} = \beta_{hs} / \beta_c$	30/15				
HSUPA Specific Settings	DE-DPCCH	6	8	8	5	7
	DHARQ	0	0	0	0	0
	AG Index	20	12	15	17	21
	ETFCI	75	67	92	71	81
	Associated Max UL Data Rate kbps	242.1	174.9	482.8	205.8	308.9
	Reference E_FCIs	E-TFCI 11 E E-TFCI PO 4 E-TFCI 67 E-TFCI PO 18 E-TFCI 71 E-TFCI PO23 E-TFCI 75 E-TFCI PO26 E-TFCI 81 E-TFCI PO 27	E-TFCI 11 E-TFCI PO4 E-TFCI 92 E-TFCI PO 18	E-TFCI 11 E-TFCI PO4 E-TFCI 92 E-TFCI PO 18	E-TFCI 11 E E-TFCI PO 4 E-TFCI 67 E-TFCI PO 18 E-TFCI 71 E-TFCI PO23 E-TFCI 75 E-TFCI PO26 E-TFCI 81 E-TFCI PO 27	

HSPA+

Sub-test	β_c (Note3)	β_d	β_{HS} (Note1)	β_{ec}	β_{ed} (2xSF2) (Note 4)	β_{ed} (2xSF4) (Note 4)	CM (dB) (Note 2)	MPR (dB) (Note 2)	AG Index (Note 4)	E-TFCI (Note 5)	E-TFCI (boost)
1	1	0	30/15	30/15	β_{ed1} : 30/15 β_{ed2} : 30/15	β_{ed3} : 24/15 β_{ed4} : 24/15	3.5	2.5	14	105	105

- Note 1: $\Delta_{ACK}, \Delta_{NACK}$ and $\Delta_{CQI} = 30/15$ with $\beta_{hs} = 30/15 * \beta_c$.
- Note 2: CM = 3.5 and the MPR is based on the relative CM difference, MPR = MAX(CM-1,0).
- Note 3: DPDCH is not configured, therefore the β_c is set to 1 and $\beta_d = 0$ by default.
- Note 4: β_{ed} can not be set directly; it is set by Absolute Grant Value.
- Note 5: All the sub-tests require the UE to transmit 2SF2+2SF4 16QAM EDCH and they apply for UE using E-DPDCH category 7. E-DCH TTI is set to 2ms TTI and E-DCH table index = 2. To support these E-DCH configurations DPDCH is not allocated. The UE is signalled to use the extrapolation algorithm.

The following tests were conducted according to the test requirements in Table C.11.1.4 of 3GPP TS 34.121-1

LTE

For UE Power Class 1 and 3, the allowed Maximum Power Reduction (MPR) for the maximum output power in Table 6.2.2-1 due to higher order modulation and transmit bandwidth configuration (resource blocks) is specified in Table 6.2.3-1.

Table 6.2.3-1: Maximum Power Reduction (MPR) for Power Class 1 and 3

Modulation	Channel bandwidth / Transmission bandwidth (N_{RB})						MPR (dB)
	1.4 MHz	3.0 MHz	5 MHz	10 MHz	15 MHz	20 MHz	
QPSK	> 5	> 4	> 8	> 12	> 16	> 18	≤ 1
16 QAM	≤ 5	≤ 4	≤ 8	≤ 12	≤ 16	≤ 18	≤ 1
16 QAM	> 5	> 4	> 8	> 12	> 16	> 18	≤ 2

For UE Power Class 1 and 3 the specific requirements and identified sub clauses are specified in Table 6.2.4-1 along with the allowed A-MPR values that may be used to meet these requirements. The allowed A-MPR values specified below in Table 6.2.4-1 to 6.2.4-15 are in addition to the allowed MPR requirements specified in sub clause 6.2.3.

Table 6.2.4-1: Additional Maximum Power Reduction (A-MPR)

Network Signalling value	Requirements (subclause)	E-UTRA Band	Channel bandwidth (MHz)	Resources Blocks (N_{RB})	A-MPR (dB)
NS_01	6.6.2.1.1	Table 5.5-1	1.4, 3, 5, 10, 15, 20	Table 5.6-1	N/A
NS_03	6.6.2.2.1	2, 4, 10, 23, 25, 35, 36	3	>5	≤ 1
			5	>6	≤ 1
			10	>6	≤ 1
			15	>8	≤ 1
NS_04	6.6.2.2.2	41	20	>10	≤ 1
			5	>6	≤ 1
NS_05	6.6.3.3.1	1	10, 15, 20	≥ 50	≤ 1
NS_06	6.6.2.2.3	12, 13, 14, 17	1.4, 3, 5, 10	Table 5.6-1	N/A
NS_07	6.6.2.2.3 6.6.3.3.2	13	10	Table 6.2.4-2	
NS_08	6.6.3.3.3	19	10, 15	> 44	≤ 3
NS_09	6.6.3.3.4	21	10, 15	> 40	≤ 1
				> 55	≤ 2
NS_10		20	15, 20	Table 6.2.4-3	
NS_11	6.6.2.2.1	23	1.4, 3, 5, 10, 15, 20	Table 6.2.4-5	
NS_12	6.6.3.3.5	26	1.4, 3, 5	Table 6.2.4-6	
NS_13	6.6.3.3.6	26	5	Table 6.2.4-7	
NS_14	6.6.3.3.7	26	10, 15	Table 6.2.4-8	
NS_15	6.6.3.3.8	26	1.4, 3, 5, 10, 15	Table 6.2.4-9 Table 6.2.4-10	
NS_16	6.6.3.3.9	27	3, 5, 10	Table 6.2.4-11, Table 6.2.4-12, Table 6.2.4-13	
NS_17	6.6.3.3.10	28	5, 10	Table 5.6-1	N/A
NS_18	6.6.3.3.11	28	5	≥ 2	≤ 1
			10, 15, 20	≥ 1	≤ 4
NS_19	6.6.3.3.12	44	10, 15, 20	Table 6.2.4-14	
NS_20	6.2.2 6.6.2.2.1 6.6.3.2	23	5, 10, 15, 20	Table 6.2.4-15	
...					
NS_32	-	-	-	-	-

Maximum Target Output Power

Max Target Power(dBm)			
Mode/Band	Channel		
	Low	Middle	High
GSM 850	32.6	32.6	32.6
GPRS 1 TX Slot	32.6	32.6	32.6
GPRS 2 TX Slot	31.7	31.7	31.7
GPRS 3 TX Slot	29.9	29.9	29.9
GPRS 4 TX Slot	29.1	29.1	29.1
EDGE 1 TX Slot	26.6	26.6	26.6
EDGE 2 TX Slot	25.5	25.5	25.5
EDGE 3 TX Slot	23.7	23.7	23.7
EDGE 4 TX Slot	22.6	22.6	22.6
PCS 1900	29.9	29.9	29.9
GPRS 1 TX Slot	30	30	30
GPRS 2 TX Slot	29.1	29.1	29.1
GPRS 3 TX Slot	27.1	27.1	27.1
GPRS 4 TX Slot	26.3	26.3	26.3
EDGE 1 TX Slot	24.5	24.5	24.5
EDGE 2 TX Slot	24.4	24.4	24.4
EDGE 3 TX Slot	23.2	23.2	23.2
EDGE 4 TX Slot	22.3	22.3	22.3
WCDMA Band 2	21.6	21.6	21.6
HSDPA	21	21	21
HSUPA	20.9	20.9	20.9
HSPA+	21.2	21.2	21.2
WCDMA Band 5	21.9	21.9	21.9
HSDPA	21.6	21.6	21.6
HSUPA	21	21	21
HSPA+	21.4	21.4	21.4
LTE Band 2	23	23	23
LTE Band 4	23	23	23
LTE Band 5	23.2	23.2	23.2
LTE Band 7	23	23	23
WLAN(802.11b)	9.8	9.8	9.8
WLAN(802.11g)	9.8	9.8	9.8
WLAN(802.11n HT20)	9.8	9.8	9.8
WLAN(802.11n HT40)	9.8	9.8	9.8
Bluetooth BDR/EDR	9	9	9
Bluetooth LE	1	1	1

Test Results:

GSM:

Band	Channel No.	Frequency (MHz)	RF Output Power (dBm)
GSM 850	128	824.2	32.34
	190	836.6	32.48
	251	848.8	32.37
PCS 1900	512	1850.2	29.84
	661	1880	29.78
	810	1909.8	29.74

GPRS:

Band	Channel No.	Frequency (MHz)	RF Output Power (dBm)			
			1 slot	2 slots	3 slots	4 slots
GSM 850	128	824.2	32.47	31.51	29.82	28.99
	190	836.6	32.35	31.59	29.75	28.92
	251	848.8	32.33	31.54	29.57	28.82
PCS 1900	512	1850.2	29.91	28.98	27	26.07
	661	1880	29.91	28.88	27	26.21
	810	1909.8	29.81	28.9	26.98	25.26

EGPRS:

Band	Channel No.	Frequency (MHz)	RF Output Power (dBm)			
			1 slot	2 slots	3 slots	4 slots
GSM 850	128	824.2	26.46	25.35	23.62	22.14
	190	836.6	26.19	25.18	23.4	22.54
	251	848.8	25.91	24.88	23.09	22.23
PCS 1900	512	1850.2	24.33	24.2	23.07	22.03
	661	1880	24.33	24.32	23.14	22.2
	810	1909.8	24.42	24.22	23.12	22.07

For SAR, the time based average power is relevant, the difference in between depends on the duty cycle of the TDMA signal.

Number of Time slot	1	2	3	4
Duty Cycle	1:8	1:4	1:2.66	1:2
Time based Ave. power compared to slotted Ave. power	-9 dB	-6 dB	-4.25 dB	-3 dB
Crest Factor	8	4	2.66	2

The time based average power for GPRS

Band	Channel No.	Frequency (MHz)	Time based average Power (dBm)			
			1 slot	2 slot	3 slots	4 slots
GSM 850	128	824.2	23.47	25.51	25.57	25.99
	190	836.6	23.35	25.59	25.5	25.92
	251	848.8	23.33	25.54	25.32	25.82
PCS 1900	512	1850.2	20.91	22.98	22.75	23.07
	661	1880	20.91	22.88	22.75	23.21
	810	1909.8	20.81	22.9	22.73	22.26

The time based average power for EGPRS

Band	Channel No.	Frequency (MHz)	Time based average Power (dBm)			
			1 slot	2 slot	3 slots	4 slots
GSM 850	128	824.2	17.46	19.35	19.37	19.14
	190	836.6	17.19	19.18	19.15	19.54
	251	848.8	16.91	18.88	18.84	19.23
PCS 1900	512	1850.2	15.33	18.2	18.82	19.03
	661	1880	15.33	18.32	18.89	19.2
	810	1909.8	15.42	18.22	18.87	19.07

Note:

1. Rohde & Schwarz Radio Communication Tester (CMU200) was used for the measurement of GSM peak and average output power for active timeslots.
2. For GSM voice, 1 timeslot has been activated with power level 5 (850 MHz band) and 0 (1900 MHz band).
3. For GPRS, 1, 2, 3 and 4 timeslots has been activated separately with power level 3(850 MHz band) and 3(1900 MHz band).

WCDMA:

Results (12.2kbps RMC)

Band	Frequency (MHz)	RF Output Power (dBm)
WCDMA Band 2	1852.4	21.24
	1880	21.41
	1907.6	21.46
WCDMA Band 5	826.4	21.83
	836.6	21.46
	846.6	21.59

Results (HSDPA)

Band	Frequency (MHz)	RF Output Power (dBm)			
		Subset 1	Subset 2	Subset 3	Subset 4
WCDMA Band 2	1852.4	21.22	21.34	21.47	21.23
	1880	21.05	20.96	21.14	21.06
	1907.6	21.14	21.19	21.28	21.1
WCDMA Band 5	826.4	20.62	20.6	20.65	20.86
	836.6	20.31	20.41	20.37	20.52
	846.6	20.24	20.56	20.47	20.48

Results (HSUPA)

Band	Frequency (MHz)	RF Output Power (dBm)				
		Subset 1	Subset 2	Subset 3	Subset 4	Subset 5
WCDMA Band 2	1852.4	20.5	20.58	20.25	20.52	20.35
	1880	20.58	20.76	20.66	20.9	20.61
	1907.6	20.66	20.68	20.42	20.47	20.59
WCDMA Band 5	826.4	20.38	20.61	20.54	20.49	20.54
	836.6	20.64	20.69	20.79	20.63	20.53
	846.6	20.43	20.43	20.74	20.44	20.63

Results (HSPA+)

Band	Frequency (MHz)	RF Output Power (dBm)
WCDMA Band 2	1852.4	21.29
	1880	21.09
	1907.6	21.12
WCDMA Band 5	826.4	21.12
	836.6	20.87
	846.6	20.75

Note:

1. The default test configuration is to measure SAR with an established radio link between the EUT and a communication test set using a 12.2 kbps RMC (reference measurement Channel) Configured in Test Loop Model 1.
2. KDB 941225 D01-Body SAR is not required for HSDPA/HSUPA/ HSPA+ when the maximum average output of each RF channel is less than ¼ dB higher than measured 12.2kbps RMC or the maximum SAR for 12.2kbps RMC is < 75% of SAR limit.

LTE Band 2:

Test Bandwidth	Test Modulation	Resource Block & RB offset	Target MPR	Meas MPR	Low Channel (dBm)	Middle Channel (dBm)	High Channel (dBm)
1.4M	QPSK	1#0	0	0	22.9	22.73	22.75
		1#3	0	0	22.8	22.66	22.75
		1#5	0	0	22.89	22.55	22.63
		3#0	1	1	22.71	22.79	22.73
		3#1	1	1	22.64	22.69	22.8
		3#3	1	1	22.58	22.82	22.7
		6#0	1	1	21.83	21.77	21.91
	16-QAM	1#0	1	1	21.77	21.88	21.87
		1#3	1	1	21.76	21.74	21.92
		1#5	1	1	21.64	21.7	21.84
		3#0	2	2	21.95	21.91	21.76
		3#1	2	2	21.79	21.7	21.79
		3#3	2	2	21.76	21.85	21.64
		6#0	2	2	20.77	20.69	20.67
3M	QPSK	1#0	0	0	22.82	22.82	22.84
		1#7	0	0	22.72	22.54	22.69
		1#14	0	0	22.46	22.59	22.57
		8#0	1	1	21.96	21.93	21.84
		8#4	1	1	21.78	21.93	21.94
		8#7	1	1	21.62	21.7	21.79
		15#0	1	1	21.68	21.73	21.72
	16-QAM	1#0	1	1	22.2	22.01	22.1
		1#7	1	1	22.12	22.07	22.1
		1#14	1	1	22.01	21.88	22.22
		8#0	2	2	20.94	20.9	20.81
		8#4	2	2	20.58	20.75	20.71
		8#7	2	2	20.71	20.48	20.68
		15#0	2	2	20.86	20.76	20.81
5M	QPSK	1#0	0	0	22.98	22.76	22.78
		1#12	0	0	22.86	22.83	22.9
		1#24	0	0	22.62	22.76	22.85
		12#0	1	1	21.8	21.88	21.71
		12#6	1	1	21.82	21.76	21.55
		12#11	1	1	21.69	21.89	21.36
		25#0	1	1	21.83	21.69	21.81
	16-QAM	1#0	1	1	22.08	21.54	21.69
		1#12	1	1	21.83	21.48	21.78
		1#24	1	1	21.64	21.44	21.8
		12#0	2	2	20.74	20.73	20.66
		12#6	2	2	20.76	20.81	20.5
		12#11	2	2	20.79	20.63	20.42
		25#0	2	2	20.68	20.68	20.61

Test Bandwidth	Test Modulation	Resource Block & RB offset	Target MPR	Meas MPR	Low Channel (dBm)	Middle Channel (dBm)	High Channel (dBm)
10M	QPSK	1#0	0	0	22.87	22.73	22.77
		1#24	0	0	22.86	22.66	22.72
		1#49	0	0	22.94	22.59	22.43
		25#0	1	1	21.84	21.77	21.69
		25#12	1	1	21.67	21.8	21.6
		25#24	1	1	21.66	21.73	21.47
		50#0	1	1	21.56	21.53	21.62
	16-QAM	1#0	1	1	21.61	21.68	21.62
		1#24	1	1	21.63	21.69	21.63
		1#49	1	1	21.47	21.79	21.45
		25#0	2	2	22.69	20.74	20.72
		25#12	2	2	22.5	20.58	20.52
		25#24	2	2	22.24	20.52	20.6
		50#0	2	2	20.57	20.47	20.58
15M	QPSK	1#0	0	0	22.08	22.12	22.47
		1#37	0	0	22.02	22.06	22.21
		1#74	0	0	21.85	21.86	22.04
		36#0	1	1	22.06	22.06	21.99
		36#17	1	1	21.83	21.86	21.92
		36#35	1	1	21.94	21.72	21.94
		75#0	1	1	21.98	21.85	21.95
	16-QAM	1#0	1	1	21.88	21.99	21.68
		1#37	1	1	21.7	21.8	21.6
		1#74	1	1	21.76	21.84	21.43
		36#0	2	2	21.8	21.87	22.01
		36#17	2	2	21.77	21.95	21.96
		36#35	2	2	21.72	21.74	21.8
		75#0	2	2	21.21	21.15	21.01
20M	QPSK	1#0	0	0	22.85	22.86	22.94
		1#49	0	0	22.87	22.84	22.84
		1#99	0	0	22.94	22.96	22.81
		50#0	1	1	21.93	21.82	22
		50#24	1	1	21.7	21.87	21.94
		50#49	1	1	21.62	21.77	21.65
		100#0	1	1	21.76	21.75	21.95
	16-QAM	1#0	1	1	22.12	21.9	22.17
		1#49	1	1	21.96	21.82	22.07
		1#99	1	1	21.71	21.82	22.06
		50#0	2	2	20.98	20.9	21.01
		50#24	2	2	20.95	20.71	20.87
		50#49	2	2	20.98	20.83	20.96
		100#0	2	2	20.82	20.75	20.9

LTE Band 4:

Test Bandwidth	Test Modulation	Resource Block & RB offset	Target MPR	Meas MPR	Low Channel (dBm)	Middle Channel (dBm)	High Channel (dBm)
1.4M	QPSK	1#0	0	0	22.31	22.45	22.47
		1#3	0	0	22.3	22.4	22.55
		1#5	0	0	22.41	22.45	22.33
		3#0	1	1	22.59	22.71	22.58
		3#1	1	1	22.64	22.58	22.57
		3#3	1	1	22.51	22.38	22.77
		6#0	1	1	21.41	21.41	21.44
	16-QAM	1#0	1	1	21.86	21.94	21.92
		1#3	1	1	21.63	21.93	21.93
		1#5	1	1	21.82	21.8	21.84
		3#0	2	2	22.89	21.82	21.81
		3#1	2	2	22.86	21.64	21.6
		3#3	2	2	22.91	21.55	21.71
		6#0	2	2	20.71	20.6	20.69
3M	QPSK	1#0	0	0	22.5	22.4	22.56
		1#7	0	0	22.5	22.34	22.41
		1#14	0	0	22.28	22.22	22.31
		8#0	1	1	21.74	21.65	21.54
		8#4	1	1	21.61	21.6	21.46
		8#7	1	1	21.48	21.52	21.16
		15#0	1	1	21.7	21.54	21.57
	16-QAM	1#0	1	1	21.64	21.67	21.6
		1#7	1	1	21.72	21.56	21.58
		1#14	1	1	21.67	21.44	21.67
		8#0	2	2	20.73	20.63	20.75
		8#4	2	2	20.66	20.69	20.63
		8#7	2	2	20.73	20.68	20.55
		15#0	2	2	20.84	20.84	20.7
5M	QPSK	1#0	0	0	22.68	22.58	22.75
		1#12	0	0	22.58	22.71	22.49
		1#24	0	0	22.25	22.45	22.32
		12#0	1	1	21.77	21.7	21.68
		12#6	1	1	21.73	21.55	21.68
		12#11	1	1	21.62	21.29	21.73
		25#0	1	1	21.7	21.72	21.78
	16-QAM	1#0	1	1	22.01	21.98	21.91
		1#12	1	1	21.82	21.89	21.77
		1#24	1	1	21.66	21.94	21.43
		12#0	2	2	20.84	20.95	21.09
		12#6	2	2	20.93	20.95	20.94
		12#11	2	2	20.82	20.61	20.9
		25#0	2	2	20.84	20.61	20.7

Test Bandwidth	Test Modulation	Resource Block & RB offset	Target MPR	Meas MPR	Low Channel (dBm)	Middle Channel (dBm)	High Channel (dBm)
10M	QPSK	1#0	0	0	22.74	22.67	22.63
		1#24	0	0	22.74	22.67	22.62
		1#49	0	0	22.67	22.67	22.36
		25#0	1	1	21.75	21.82	21.88
		25#12	1	1	21.82	21.76	21.62
		25#24	1	1	21.5	21.7	21.43
		50#0	1	1	21.84	21.88	21.88
	16-QAM	1#0	1	1	22.09	22.11	22.17
		1#24	1	1	21.93	22.1	22.34
		1#49	1	1	21.84	21.9	22.24
		25#0	2	2	20.92	20.9	20.83
		25#12	2	2	20.96	20.76	20.8
		25#24	2	2	20.76	20.61	20.49
		50#0	2	2	20.92	20.83	20.83
15M	QPSK	1#0	0	0	22.72	22.63	22.6
		1#37	0	0	22.69	22.68	22.57
		1#74	0	0	22.53	22.63	22.37
		36#0	1	1	21.96	21.82	21.95
		36#17	1	1	21.75	21.8	21.97
		36#35	1	1	21.78	21.89	21.74
		75#0	1	1	21.73	21.55	21.58
	16-QAM	1#0	1	1	21.69	21.61	21.47
		1#37	1	1	21.82	21.41	21.58
		1#74	1	1	21.81	21.39	21.51
		36#0	2	2	20.88	20.71	20.8
		36#17	2	2	20.75	20.64	20.93
		36#35	2	2	20.57	20.48	20.65
		75#0	2	2	20.7	20.63	20.72
20M	QPSK	1#0	0	0	22.77	22.78	22.29
		1#49	0	0	22.72	22.37	22.34
		1#99	0	0	22.62	22.15	22.34
		50#0	1	1	21.78	21.96	21.83
		50#24	1	1	21.73	21.98	21.84
		50#49	1	1	21.44	21.99	21.83
		100#0	1	1	21.77	21.48	21.51
	16-QAM	1#0	1	1	22.26	22.28	22.08
		1#49	1	1	22.22	22.16	21.99
		1#99	1	1	22.35	21.98	21.79
		50#0	2	2	21.09	20.94	21.18
		50#24	2	2	21.02	21.08	21.1
		50#49	2	2	21.05	21.04	20.74
		100#0	2	2	20.92	20.76	20.86

LTE Band 5:

Test Bandwidth	Test Modulation	Resource Block & RB offset	Target MPR	Meas MPR	Low Channel (dBm)	Middle Channel (dBm)	High Channel (dBm)
1.4M	QPSK	1#0	0	0	23.03	23	23.04
		1#3	0	0	22.95	23.02	22.84
		1#5	0	0	22.91	23.12	22.97
		3#0	1	1	23.1	23.13	22.93
		3#1	1	1	23.13	23.03	23.03
		3#3	1	1	22.93	22.77	23.11
		6#0	1	1	21.95	22.09	21.96
	16-QAM	1#0	1	1	22.09	21.99	22.03
		1#3	1	1	21.88	21.94	21.9
		1#5	1	1	21.86	21.65	21.85
		3#0	2	2	22.17	22.08	22.1
		3#1	2	2	22.13	22.06	22.01
		3#3	2	2	21.99	22.05	22.11
		6#0	2	2	21.12	20.92	20.94
3M	QPSK	1#0	0	0	23.11	23.01	22.88
		1#7	0	0	22.92	23.1	22.91
		1#14	0	0	22.89	22.81	22.73
		8#0	1	1	22.13	22.03	22.14
		8#4	1	1	21.92	21.91	22
		8#7	1	1	21.88	21.94	21.9
		15#0	1	1	21.95	21.99	22.05
	16-QAM	1#0	1	1	22.5	22.56	22.37
		1#7	1	1	22.38	22.28	22.32
		1#14	1	1	22.23	22.23	22.14
		8#0	2	2	21.23	21.13	21.14
		8#4	2	2	21.24	21.17	21.16
		8#7	2	2	21	20.81	21.2
		15#0	2	2	21.03	21.15	21.19
5M	QPSK	1#0	0	0	22.13	21.98	22.02
		1#12	0	0	21.89	22	21.92
		1#24	0	0	21.72	21.81	21.72
		12#0	1	1	21.13	21.23	21.29
		12#6	1	1	21.17	21.24	21.17
		12#11	1	1	21.16	21.03	20.92
		25#0	1	1	22.1	21.92	22.15
	16-QAM	1#0	1	1	21.97	21.94	21.91
		1#12	1	1	21.74	21.9	22.06
		1#24	1	1	21.67	21.88	22.04
		12#0	2	2	21.11	21.13	21.21
		12#6	2	2	21.12	21.2	21.12
		12#11	2	2	21.12	21.1	21.23
		25#0	2	2	21	21.1	21.1

Test Bandwidth	Test Modulation	Resource Block & RB offset	Target MPR	Meas MPR	Low Channel (dBm)	Middle Channel (dBm)	High Channel (dBm)
10M	QPSK	1#0	0	0	23.01	23.15	23.06
		1#24	0	0	22.99	23.1	22.84
		1#49	0	0	22.75	23.06	22.7
		25#0	1	1	22.08	21.97	21.98
		25#12	1	1	22.14	21.87	21.85
		25#24	1	1	22	21.73	21.68
		50#0	1	1	22.03	22.01	22.06
	16-QAM	1#0	1	1	22.54	22.66	22.72
		1#24	1	1	22.48	22.62	22.65
		1#49	1	1	22.49	22.38	22.64
		25#0	2	2	21.13	21.19	21.2
		25#12	2	2	21.06	21.24	21.25
		25#24	2	2	21.15	21.08	20.96
		50#0	2	2	21.16	21.14	21.14

LTE Band 7:

Test Bandwidth	Test Modulation	Resource Block & RB offset	Target MPR	Meas MPR	Low Channel (dBm)	Middle Channel (dBm)	High Channel (dBm)
5M	QPSK	1#0	0	0	22.75	22.64	22.75
		1#12	0	0	22.53	22.59	22.65
		1#24	0	0	22.42	22.47	22.65
		12#0	1	1	21.85	21.72	21.67
		12#6	1	1	21.67	21.57	21.75
		12#11	1	1	21.52	21.51	21.51
		25#0	1	1	21.46	21.59	21.53
	16-QAM	1#0	1	1	21.83	21.62	21.64
		1#12	1	1	21.65	21.48	21.63
		1#24	1	1	21.54	21.44	21.43
		12#0	2	2	20.7	20.61	20.59
		12#6	2	2	20.74	20.47	20.58
		12#11	2	2	20.56	20.37	20.46
		25#0	2	2	20.46	20.44	20.49
10M	QPSK	1#0	0	0	22.8	22.81	22.87
		1#24	0	0	22.6	22.69	22.75
		1#49	0	0	22.47	22.61	22.63
		25#0	1	1	21.71	21.6	21.57
		25#12	1	1	21.74	21.65	21.34
		25#24	1	1	21.54	21.4	21.42
		50#0	1	1	21.64	21.47	21.52
	16-QAM	1#0	1	1	22.03	22.12	22.18
		1#24	1	1	21.84	22.1	22.15
		1#49	1	1	21.75	22.05	22.09
		25#0	2	2	21.7	21.64	21.68
		25#12	2	2	21.47	21.42	21.44
		25#24	2	2	21.5	21.61	21.2
		50#0	2	2	20.54	20.45	20.45
15M	QPSK	1#0	0	0	22.66	22.44	22.43
		1#37	0	0	22.61	22.53	22.33
		1#74	0	0	22.58	22.46	22.02
		36#0	1	1	22.19	22.12	22.12
		36#17	1	1	22.04	21.83	21.94
		36#35	1	1	21.95	21.7	21.78
		75#0	1	1	21.75	21.72	21.81
	16-QAM	1#0	1	1	22.1	22.11	22.06
		1#37	1	1	21.98	22.08	21.97
		1#74	1	1	21.89	21.97	22.06
		36#0	2	2	20.75	20.6	20.73
		36#17	2	2	20.49	20.67	20.77
		36#35	2	2	20.65	20.65	20.84
		75#0	2	2	20.71	20.58	20.54

Test Bandwidth	Test Modulation	Resource Block & RB offset	Target MPR	Meas MPR	Low Channel (dBm)	Middle Channel (dBm)	High Channel (dBm)
20M	QPSK	1#0	0	0	22.84	22.76	22.7
		1#49	0	0	22.93	22.83	22.52
		1#99	0	0	22.71	22.79	22.57
		50#0	1	1	21.69	21.77	21.71
		50#24	1	1	21.66	21.47	21.62
		50#49	1	1	21.41	21.42	21.69
		100#0	1	1	21.72	21.6	21.7
	16-QAM	1#0	1	1	21.97	22.09	21.94
		1#49	1	1	21.99	21.85	21.99
		1#99	1	1	21.84	21.82	21.91
		50#0	2	2	20.61	20.7	20.69
		50#24	2	2	20.56	20.58	20.49
		50#49	2	2	20.56	20.53	20.47
		100#0	2	2	20.6	20.61	20.57

Note:

1. SAR for LTE band exposure configurations is measured according to the procedures of KDB 941225 D05 SAR for LTE Devices v02.
2. The CMW500 Wideband Radio Communication tester is used for LTE output power measurements and SAR testing. Closed loop power control is used to keep the radio transmitters the max output power during the test.
3. KDB941225D05v02- SAR for higher order modulation is required only when the highest maximum output power for the configuration in the higher order modulation is > ½ dB higher than the same configuration in QPSK or when the reported SAR for the QPSK configuration is > 1.45 W/kg

WLAN:

Mode	Channel frequency (MHz)	RF Output Power (dBm)
802.11b	2412	9.04
	2442	9.50
	2472	9.56
802.11g	2412	8.92
	2442	9.17
	2472	9.63
802.11n HT20	2412	9.26
	2442	9.63
	2472	9.42
802.11n HT40	2422	8.14
	2442	8.54
	2462	8.44

Note: The output power was tested under data rate 1Mbps for 802.11b, 6Mbps for 802.11g, MCS0 for 802.11n HT20 and 802.11n HT40.

Bluetooth:

Mode	Channel frequency (MHz)	RF Output Power (dBm)
BDR(GFSK)	2402	8.11
	2441	8.35
	2480	8.14
EDR(4-DQPSK)	2402	6.91
	2441	7.32
	2480	7.4
EDR(8-DPSK)	2402	7.39
	2441	7.68
	2480	7.58
Bluetooth LE	2402	0.34
	2440	0.69
	2480	0.94

SAR MEASUREMENT RESULTS

This page summarizes the results of the performed dosimetric evaluation.

SAR Test Data

Environmental Conditions

Temperature:	21.8-22.1 °C	22.4-23.4 °C
Relative Humidity:	58 %	60 %
ATM Pressure:	1011 mbar	1012 mbar
Test Date:	2016/11/21	2016/11/24

Temperature:	21.6-22.7 °C	22.4-23.3 °C	22.4-22.8 °C
Relative Humidity:	55 %	58 %	59 %
ATM Pressure:	1013 mbar	1012 mbar	1009 mbar
Test Date:	2016/11/25	2016/11/26	2016/11/27

Testing was performed by Edison Hu, Zack Huang and Peter Lee.

GSM 850:

EUT Position	Frequency (MHz)	Test Mode	Power Drift (dB)	Max. Meas. Power (dBm)	Max. Rated Power (dBm)	1g SAR (W/Kg)			
						Scaled Factor	Meas. SAR	Scaled SAR	Plot
Head Left Cheek	824.2	GSM	/	/	/	/	/	/	/
	836.6	GSM	-0.1	32.48	32.6	1.028	0.371	0.381	1#
	848.8	GSM	/	/	/	/	/	/	/
Head Left Tilt	824.2	GSM	/	/	/	/	/	/	/
	836.6	GSM	-0.05	32.48	32.6	1.028	0.183	0.188	2#
	848.8	GSM	/	/	/	/	/	/	/
Head Right Cheek	824.2	GSM	/	/	/	/	/	/	/
	836.6	GSM	-0.04	32.48	32.6	1.028	0.312	0.321	3#
	848.8	GSM	/	/	/	/	/	/	/
Head Right Tilt	824.2	GSM	/	/	/	/	/	/	/
	836.6	GSM	-0.01	32.48	32.6	1.028	0.169	0.174	4#
	848.8	GSM	/	/	/	/	/	/	/
Body Worn Back (5mm)	824.2	GSM	0.04	32.34	32.6	1.062	0.857	0.91	5#
	836.6	GSM	0.02	32.48	32.6	1.028	0.872	0.896	6#
	848.8	GSM	0.01	32.37	32.6	1.054	0.861	0.907	7#
Body Back (10mm)	824.2	GPRS	-0.05	28.99	29.1	1.026	1.15	1.18	8#
	836.6	GPRS	-0.04	28.92	29.1	1.042	1.1	1.146	9#
	848.8	GPRS	-0.01	28.82	29.1	1.067	1.12	1.195	10#
Body Left (10mm)	824.2	GPRS	/	/	/	/	/	/	/
	836.6	GPRS	-0.06	28.92	29.1	1.042	0.564	0.588	11#
	848.8	GPRS	/	/	/	/	/	/	/
Body Right (10mm)	824.2	GPRS	/	/	/	/	/	/	/
	836.6	GPRS	-0.01	28.92	29.1	1.042	0.568	0.592	12#
	848.8	GPRS	/	/	/	/	/	/	/
Body Bottom (10mm)	824.2	GPRS	/	/	/	/	/	/	/
	836.6	GPRS	0.07	28.92	29.1	1.042	0.23	0.24	13#
	848.8	GPRS	/	/	/	/	/	/	/

Note:

1. When the 1-g SAR is ≤ 0.8 W/Kg, testing for other channels are optional.
2. The EUT transmit and receive through the same GSM antenna while testing SAR.
3. When SAR or MPE is not measured at the maximum power level allowed for production units, the results must be scaled to the maximum tune-up tolerance limit according to the power applied to the individual channels tested to determine compliance.
4. When the maximum output power variation across the required test channels is $> \frac{1}{2}$ dB, instead of the middle channel, the highest output power channel must be used.
5. The Multi-slot Classes of EUT is Class 12 which has maximum 4 Downlink slots and 4 Uplink slots, the maximum active slots is 5, when perform the multiple slots scan, 1DL+4UL is the worst case.

PCS 1900:

EUT Position	Frequency (MHz)	Test Mode	Power Drift (dB)	Max. Meas. Power (dBm)	Max. Rated Power (dBm)	1g SAR (W/Kg)			
						Scaled Factor	Meas. SAR	Scaled SAR	Plot
Head Left Cheek	1850.2	GSM	/	/	/	/	/	/	/
	1880	GSM	0.09	29.78	29.9	1.028	0.278	0.286	14#
	1909.8	GSM	/	/	/	/	/	/	/
Head Left Tilt	1850.2	GSM	/	/	/	/	/	/	/
	1880	GSM	-0.14	29.78	29.9	1.028	0.087	0.089	15#
	1909.8	GSM	/	/	/	/	/	/	/
Head Right Cheek	1850.2	GSM	/	/	/	/	/	/	/
	1880	GSM	0.17	29.78	29.9	1.028	0.318	0.327	16#
	1909.8	GSM	/	/	/	/	/	/	/
Head Right Tilt	1850.2	GSM	/	/	/	/	/	/	/
	1880	GSM	-0.16	29.78	29.9	1.028	0.072	0.074	17#
	1909.8	GSM	/	/	/	/	/	/	/
Body Worn Back (5mm)	1850.2	GSM	0.09	29.84	29.9	1.014	1.04	1.055	18#
	1880	GSM	0.06	29.78	29.9	1.028	1.08	1.11	19#
	1909.8	GSM	0.13	29.74	29.9	1.038	0.976	1.013	20#
Body Back (10mm)	1850.2	GPRS	/	/	/	/	/	/	/
	1880.0	GPRS	0.05	26.21	26.3	1.021	0.689	0.703	21#
	1909.8	GPRS	/	/	/	/	/	/	/
Body Left (10mm)	1850.2	GPRS	/	/	/	/	/	/	/
	1880.0	GPRS	0.14	26.21	26.3	1.021	0.171	0.175	22#
	1909.8	GPRS	/	/	/	/	/	/	/
Body Right (10mm)	1850.2	GPRS	/	/	/	/	/	/	/
	1880.0	GPRS	-0.14	26.21	26.3	1.021	0.291	0.297	23#
	1909.8	GPRS	/	/	/	/	/	/	/
Body Bottom (10mm)	1850.2	GPRS	/	/	/	/	/	/	/
	1880.0	GPRS	-0.01	26.21	26.3	1.021	0.777	0.793	24#
	1909.8	GPRS	/	/	/	/	/	/	/

Note:

1. When the 1-g SAR is $\leq 0.8W/Kg$, testing for other channels are optional.
2. The EUT transmit and receive through the same GSM antenna while testing SAR.
3. When SAR or MPE is not measured at the maximum power level allowed for production units, the results must be scaled to the maximum tune-up tolerance limit according to the power applied to the individual channels tested to determine compliance.
4. When the maximum output power variation across the required test channels is $> \frac{1}{2}$ dB, instead of the middle channel, the highest output power channel must be used.
5. The Multi-slot Classes of EUT is Class 12 which has maximum 4 Downlink slots and 4 Uplink slots, the maximum active slots is 5, when perform the multiple slots scan, 1DL+4UL is the worst case.

WCDMA Band 2:

EUT Position	Frequency (MHz)	Test Mode	Power Drift (dB)	Max. Meas. Power (dBm)	Max. Rated Power (dBm)	1g SAR (W/Kg)			
						Scaled Factor	Meas. SAR	Scaled SAR	Plot
Head Left Cheek	1852.4	RMC	/	/	/	/	/	/	/
	1880	RMC	0.06	21.41	21.6	1.045	0.276	0.288	25#
	1907.6	RMC	/	/	/	/	/	/	/
Head Left Tilt	1852.4	RMC	/	/	/	/	/	/	/
	1880	RMC	-0.19	21.41	21.6	1.045	0.118	0.123	26#
	1907.6	RMC	/	/	/	/	/	/	/
Head Right Cheek	1852.4	RMC	/	/	/	/	/	/	/
	1880	RMC	-0.1	21.41	21.6	1.045	0.458	0.479	27#
	1907.6	RMC	/	/	/	/	/	/	/
Head Right Tilt	1852.4	RMC	/	/	/	/	/	/	/
	1880	RMC	-0.08	21.41	21.6	1.045	0.099	0.103	28#
	1907.6	RMC	/	/	/	/	/	/	/
Body Worn Back (5mm)	1852.4	RMC	0.06	21.24	21.6	1.086	1.07	1.162	29#
	1880	RMC	-0.07	21.41	21.6	1.045	1.03	1.076	30#
	1907.6	RMC	0.04	21.46	21.6	1.033	1.12	1.157	31#
Body Back (10mm)	1852.4	RMC	/	/	/	/	/	/	/
	1880	RMC	0.05	21.41	21.6	1.045	0.714	0.746	32#
	1907.6	RMC	/	/	/	/	/	/	/
Body Left (10mm)	1852.4	RMC	/	/	/	/	/	/	/
	1880	RMC	0.01	21.41	21.6	1.045	0.341	0.356	33#
	1907.6	RMC	/	/	/	/	/	/	/
Body Right (10mm)	1852.4	RMC	/	/	/	/	/	/	/
	1880	RMC	0.01	21.41	21.6	1.045	0.579	0.605	34#
	1907.6	RMC	/	/	/	/	/	/	/
Body Bottom (10mm)	1852.4	RMC	/	/	/	/	/	/	/
	1880	RMC	-0.06	21.41	21.6	1.045	0.677	0.707	35#
	1907.6	RMC	/	/	/	/	/	/	/

WCDMA Band 5:

EUT Position	Frequency (MHz)	Test Mode	Power Drift (dB)	Max. Meas. Power (dBm)	Max. Rated Power (dBm)	1g SAR (W/Kg)			
						Scaled Factor	Meas. SAR	Scaled SAR	Plot
Head Left Cheek	826.4	RMC	/	/	/	/	/	/	/
	836.6	RMC	-0.19	21.46	21.9	1.107	0.296	0.328	36#
	846.6	RMC	/	/	/	/	/	/	/
Head Left Tilt	826.4	RMC	/	/	/	/	/	/	/
	836.6	RMC	0.15	21.46	21.9	1.107	0.129	0.143	37#
	846.6	RMC	/	/	/	/	/	/	/
Head Right Cheek	826.4	RMC	/	/	/	/	/	/	/
	836.6	RMC	0.09	21.46	21.9	1.107	0.236	0.261	38#
	846.6	RMC	/	/	/	/	/	/	/
Head Right Tilt	826.4	RMC	/	/	/	/	/	/	/
	836.6	RMC	0.06	21.46	21.9	1.107	0.133	0.147	39#
	846.6	RMC	/	/	/	/	/	/	/
Body Worn Back (5mm)	826.4	RMC	-0.01	21.83	21.9	1.016	0.911	0.926	40#
	836.6	RMC	0.02	21.46	21.9	1.107	0.92	1.018	41#
	846.6	RMC	0.02	21.59	21.9	1.074	0.851	0.914	42#
Body Back (10mm)	826.4	RMC	/	/	/	/	/	/	/
	836.6	RMC	0.01	21.46	21.9	1.107	0.606	0.671	43#
	846.6	RMC	/	/	/	/	/	/	/
Body Left (10mm)	826.4	RMC	/	/	/	/	/	/	/
	836.6	RMC	-0.01	21.46	21.9	1.107	0.477	0.528	44#
	846.6	RMC	/	/	/	/	/	/	/
Body Right (10mm)	826.4	RMC	/	/	/	/	/	/	/
	836.6	RMC	-0.02	21.46	21.9	1.107	0.458	0.507	45#
	846.6	RMC	/	/	/	/	/	/	/
Body Bottom (10mm)	826.4	RMC	/	/	/	/	/	/	/
	836.6	RMC	0.02	21.46	21.9	1.107	0.219	0.242	46#
	846.6	RMC	/	/	/	/	/	/	/

Note:

1. When the 1-g SAR is ≤ 0.8 W/Kg, testing for other channels are optional.
2. The EUT transmit and receive through the same antenna while testing SAR.
3. The default test configuration is to measure SAR with an established radio link between the EUT and a communication test set using a 12.2 kbps RMC (reference measurement Channel) Configured in Test Loop Model.
4. KDB 941225 D01-Body SAR is not required for HSDPA/HSUPA/HSPA+ when the maximum average output of each RF channel is less than $\frac{1}{4}$ dB higher than measured 12.2kbps RMC or the maximum SAR for 12.2kbps RMC is $< 75\%$ of SAR limit.
5. When SAR or MPE is not measured at the maximum power level allowed for production units, the results must be scaled to the maximum tune-up tolerance limit according to the power applied to the individual channels tested to determine compliance.

LTE Band 2:

EUT Position	Frequency (MHz)	Bandwidth (MHz)	Test Mode	Power Drift (dB)	Max. Meas. Power (dBm)	Max. Rated Power (dBm)	1g SAR (W/Kg)			
							Scaled Factor	Meas. SAR	Scaled SAR	Plot
Head Left Cheek	1860	20	1RB	/	/	/	/	/	/	/
	1880	20	1RB	0.12	22.96	23	1.009	0.355	0.358	47#
	1900	20	1RB	/	/	/	/	/	/	/
	1880	20	50%RB	-0.17	21.87	23	1.297	0.283	0.367	48#
Head Left Tilt	1860	20	1RB	/	/	/	/	/	/	/
	1880	20	1RB	0.05	22.96	23	1.009	0.157	0.158	49#
	1900	20	1RB	/	/	/	/	/	/	/
	1880	20	50%RB	0.04	21.87	23	1.297	0.125	0.162	50#
Head Right Cheek	1860	20	1RB	/	/	/	/	/	/	/
	1880	20	1RB	0.1	22.96	23	1.009	0.573	0.578	51#
	1900	20	1RB	/	/	/	/	/	/	/
	1880	20	50%RB	0.13	21.87	23	1.297	0.472	0.612	52#
Head Right Tilt	1860	20	1RB	/	/	/	/	/	/	/
	1880	20	1RB	0.17	22.96	23	1.009	0.111	0.112	53#
	1900	20	1RB	/	/	/	/	/	/	/
	1880	20	50%RB	0.08	21.87	23	1.297	0.087	0.113	54#
Body Back (10mm)	1860	20	1RB	/	/	/	/	/	/	/
	1880	20	1RB	0.04	22.96	23	1.009	0.277	0.279	55#
	1900	20	1RB	/	/	/	/	/	/	/
	1880	20	50%RB	0.08	21.87	23	1.297	0.216	0.28	56#
Body Left (10mm)	1860	20	1RB	/	/	/	/	/	/	/
	1880	20	1RB	0.1	22.96	23	1.009	0.112	0.113	57#
	1900	20	1RB	/	/	/	/	/	/	/
	1880	20	50%RB	0.08	21.87	23	1.297	0.087	0.113	58#
Body Right (10mm)	1860	20	1RB	/	/	/	/	/	/	/
	1880	20	1RB	0.03	22.96	23	1.009	0.071	0.072	59#
	1900	20	1RB	/	/	/	/	/	/	/
	1880	20	50%RB	-0.02	21.87	23	1.297	0.058	0.075	60#
Body Bottom (10mm)	1860	20	1RB	/	/	/	/	/	/	/
	1880	20	1RB	-0.05	22.96	23	1.009	0.346	0.349	61#
	1900	20	1RB	/	/	/	/	/	/	/
	1880	20	50%RB	-0.05	21.87	23	1.297	0.275	0.357	62#

LTE Band 4:

EUT Position	Frequency (MHz)	Bandwidth (MHz)	Test Mode	Power Drift (dB)	Max. Meas. Power (dBm)	Max. Rated Power (dBm)	1g SAR (W/Kg)			
							Scaled Factor	Meas. SAR	Scaled SAR	Plot
Head Left Cheek	1720	20	1RB	/	/	/	/	/	/	/
	1732.5	20	1RB	0.15	22.78	23	1.052	0.435	0.458	63#
	1745	20	1RB	/	/	/	/	/	/	/
	1745	20	50%RB	0.2	21.99	23	1.262	0.325	0.41	64#
Head Left Tilt	1720	20	1RB	/	/	/	/	/	/	/
	1732.5	20	1RB	-0.11	22.78	23	1.052	0.106	0.112	65#
	1745	20	1RB	/	/	/	/	/	/	/
	1732.5	20	50%RB	0.04	21.99	23	1.262	0.092	0.116	66#
Head Right Cheek	1720	20	1RB	/	/	/	/	/	/	/
	1732.5	20	1RB	0.18	22.78	23	1.052	0.613	0.645	67#
	1745	20	1RB	/	/	/	/	/	/	/
	1732.5	20	50%RB	0.19	21.99	23	1.262	0.464	0.586	68#
Head Right Tilt	1720	20	1RB	/	/	/	/	/	/	/
	1732.5	20	1RB	-0.11	22.78	23	1.052	0.096	0.101	69#
	1745	20	1RB	/	/	/	/	/	/	/
	1745	20	50%RB	-0.11	21.99	23	1.262	0.083	0.105	70#
Body Back (10mm)	1720	20	1RB	/	/	/	/	/	/	/
	1732.5	20	1RB	0.03	22.78	23	1.052	0.322	0.339	71#
	1745	20	1RB	/	/	/	/	/	/	/
	1732.5	20	50%RB	-0.05	21.99	23	1.262	0.261	0.329	72#
Body Left (10mm)	1720	20	1RB	/	/	/	/	/	/	/
	1732.5	20	1RB	0.13	22.78	23	1.052	0.06	0.063	73#
	1745	20	1RB	/	/	/	/	/	/	/
	1732.5	20	50%RB	0.1	21.99	23	1.262	0.05	0.063	74#
Body Right (10mm)	1720	20	1RB	/	/	/	/	/	/	/
	1732.5	20	1RB	0.19	22.78	23	1.052	0.146	0.154	75#
	1745	20	1RB	/	/	/	/	/	/	/
	1732.5	20	50%RB	-0.04	21.99	23	1.262	0.12	0.151	76#
Body Bottom (10mm)	1720	20	1RB	/	/	/	/	/	/	/
	1732.5	20	1RB	-0.01	22.78	23	1.052	0.212	0.223	77#
	1745	20	1RB	/	/	/	/	/	/	/
	1732.5	20	50%RB	-0.03	21.99	23	1.262	0.171	0.216	78#

LTE Band 5:

EUT Position	Frequency (MHz)	Bandwidth (MHz)	Test Mode	Power Drift (dB)	Max. Meas. Power (dBm)	Max. Rated Power (dBm)	1g SAR (W/Kg)			
							Scaled Factor	Meas. SAR	Scaled SAR	Plot
Head Left Cheek	829	10	1RB	/	/	/	/	/	/	/
	832.5	10	1RB	0.19	23.15	23.2	1.012	0.479	0.485	79#
	844	10	1RB	/	/	/	/	/	/	/
	832.5	10	50%RB	-0.07	21.97	23.2	1.327	0.409	0.543	80#
Head Left Tilt	829	10	1RB	/	/	/	/	/	/	/
	832.5	10	1RB	-0.14	23.15	23.2	1.012	0.212	0.215	81#
	844	10	1RB	/	/	/	/	/	/	/
	832.5	10	50%RB	0.18	21.97	23.2	1.327	0.179	0.238	82#
Head Right Cheek	829	10	1RB	/	/	/	/	/	/	/
	832.5	10	1RB	0.14	23.15	23.2	1.012	0.387	0.392	83#
	844	10	1RB	/	/	/	/	/	/	/
	832.5	10	50%RB	0.19	21.97	23.2	1.327	0.326	0.433	84#
Head Right Tilt	829	10	1RB	/	/	/	/	/	/	/
	832.5	10	1RB	0.1	23.15	23.2	1.012	0.237	0.24	85#
	844	10	1RB	/	/	/	/	/	/	/
	832.5	10	50%RB	0.12	21.97	23.2	1.327	0.194	0.257	86#
Body Back (10mm)	829	10	1RB	/	/	/	/	/	/	/
	832.5	10	1RB	0	23.15	23.2	1.012	0.369	0.373	87#
	844	10	1RB	/	/	/	/	/	/	/
	832.5	10	50%RB	0.03	21.97	23.2	1.327	0.282	0.374	88#
Body Left (10mm)	829	10	1RB	/	/	/	/	/	/	/
	832.5	10	1RB	-0.03	23.15	23.2	1.012	0.136	0.138	89#
	844	10	1RB	/	/	/	/	/	/	/
	832.5	10	50%RB	-0.02	21.97	23.2	1.327	0.111	0.147	90#
Body Right (10mm)	829	10	1RB	/	/	/	/	/	/	/
	832.5	10	1RB	-0.01	23.15	23.2	1.012	0.115	0.116	91#
	844	10	1RB	/	/	/	/	/	/	/
	832.5	10	50%RB	-0.04	21.97	23.2	1.327	0.099	0.131	92#
Body Bottom (10mm)	829	10	1RB	/	/	/	/	/	/	/
	832.5	10	1RB	0.03	23.15	23.2	1.012	0.068	0.069	93#
	844	10	1RB	/	/	/	/	/	/	/
	832.5	10	50%RB	0.06	21.97	23.2	1.327	0.055	0.073	94#

LTE Band 7:

EUT Position	Frequency (MHz)	Bandwidth (MHz)	Test Mode	Power Drift (dB)	Max. Meas. Power (dBm)	Max. Rated Power (dBm)	1g SAR (W/Kg)			
							Scaled Factor	Meas. SAR	Scaled SAR	Plot
Head Left Cheek	2510	20	1RB	/	/	/	/	/	/	/
	2535	20	1RB	-0.11	22.83	23	1.04	0.224	0.233	95#
	2560	20	1RB	/	/	/	/	/	/	/
	2560	20	50%RB	-0.11	21.77	23	1.327	0.188	0.249	96#
Head Left Tilt	2510	20	1RB	/	/	/	/	/	/	/
	2535	20	1RB	0.01	22.83	23	1.04	0.203	0.211	97#
	2560	20	1RB	/	/	/	/	/	/	/
	2560	20	50%RB	0.09	21.77	23	1.327	0.166	0.22	98#
Head Right Cheek	2510	20	1RB	/	/	/	/	/	/	/
	2535	20	1RB	0.07	22.83	23	1.04	0.359	0.373	99#
	2560	20	1RB	/	/	/	/	/	/	/
	2560	20	50%RB	0.19	21.77	23	1.327	0.316	0.419	100#
Head Right Tilt	2510	20	1RB	/	/	/	/	/	/	/
	2535	20	1RB	0.08	22.83	23	1.04	0.111	0.115	101#
	2560	20	1RB	/	/	/	/	/	/	/
	2560	20	50%RB	0.05	21.77	23	1.327	0.095	0.126	102#
Body Back (10mm)	2510	20	1RB	/	/	/	/	/	/	/
	2535	20	1RB	-0.06	22.83	23	1.04	0.207	0.215	103#
	2560	20	1RB	/	/	/	/	/	/	/
	2535	20	50%RB	0.1	21.77	23	1.327	0.171	0.227	104#
Body Left (10mm)	2510	20	1RB	/	/	/	/	/	/	/
	2535	20	1RB	-0.08	22.83	23	1.04	0.037	0.038	105#
	2560	20	1RB	/	/	/	/	/	/	/
	2560	20	50%RB	0.01	21.77	23	1.327	0.028	0.037	106#
Body Right (10mm)	2510	20	1RB	/	/	/	/	/	/	/
	2535	20	1RB	0.04	22.83	23	1.04	0.179	0.186	107#
	2560	20	1RB	/	/	/	/	/	/	/
	2560	20	50%RB	-0.02	21.77	23	1.327	0.144	0.191	108#
Body Bottom (10mm)	2510	20	1RB	/	/	/	/	/	/	/
	2535	20	1RB	-0.02	22.83	23	1.04	0.142	0.148	109#
	2560	20	1RB	/	/	/	/	/	/	/
	2535	20	50%RB	-0.01	21.77	23	1.327	0.11	0.146	110#

Note:

1. When the 1-g SAR is $\leq 0.8\text{W/Kg}$, testing for other channels are optional.
2. SAR for LTE band exposure configurations is measured according to the procedures of KDB 941225 D05 SAR for LTE Devices v02.
3. KDB941225D05-SAR for higher order modulation is required only when the highest maximum output power for the configuration in the higher order modulation is $> \frac{1}{2}$ dB higher than the same configuration in QPSK or when the reported SAR for the QPSK configuration is $> 1.45\text{ W/kg}$
4. KDB941225D05-For QPSK with 100% RB allocation, when the reported SAR measured for the Highest output power channel is $< 1.45\text{ W/kg}$, tests for the remaining required test channels are optional.
5. KDB941225D05- For QPSK with 100% RB allocation, SAR is not required when the highest maximum output power for 100 % RB allocation is less than the highest maximum output power in 50% and 1 RB allocations and the highest reported SAR for 1 RB and 50% RB allocation are $\leq 0.8\text{ W/kg}$.
6. KDB941225D05- Start with the largest channel bandwidth and measure SAR for QPSK with 1 RB allocation, using the RB offset and required test channel combination with the highest maximum output power among RB offset the upper edge, middle and lower edge of each required test channel.
7. KDB941225D05- other channel bandwidths SAR test is required when the highest maximum output power of a configuration requiring testing in the smaller channel bandwidth is $> \frac{1}{2}$ dB higher than the equivalent channel configurations in the largest channel bandwidth configuration or the reported SAR of a configuration for the largest channel bandwidth is $> 1.45\text{ W/kg}$.
8. Worst case SAR for 50% RB allocation is selected to be tested.
9. KDB 648474 D04-When the peak SAR located in regions that probe is unable to access, a flat phantom is used for SAR measurement.

SAR Measurement Variability

In accordance with published RF Exposure KDB procedure 865664 D01 SAR measurement 100 MHz to 6 GHz v01. These additional measurements are repeated after the completion of all measurements requiring the same head or body tissue-equivalent medium in a frequency band. The test device should be returned to ambient conditions (normal room temperature) with the battery fully charged before it is re-mounted on the device holder for the repeated measurement(s) to minimize any unexpected variations in the repeated results

- 1) Repeated measurement is not required when the original highest measured SAR is < 0.80 W/kg.
- 2) When the original highest measured SAR is ≥ 0.80 W/kg, repeat that measurement once.
- 3) Perform a second repeated measurement only if the ratio of largest to smallest SAR for the original and first repeated measurements is > 1.20 or when the original or repeated measurement is ≥ 1.45 W/kg (~ 10% from the 1-g SAR limit).
- 4) Perform a third repeated measurement only if the original, first or second repeated measurement is ≥ 1.5 W/kg and the ratio of largest to smallest SAR for the original, first and second repeated measurements is > 1.20.

The Highest Measured SAR Configuration in Each Frequency Band

Head

Frequency Band	Freq.(MHz)	EUT Position	Meas. SAR (W/kg)		Largest to Smallest SAR Ratio
			Original	Repeated	
/	/	/	/	/	/

Body

Frequency Band	Freq.(MHz)	EUT Position	Meas. SAR (W/kg)		Largest to Smallest SAR Ratio
			Original	Repeated	
GSM 850	824.2	Body Worn Back (5mm)	0.857	0.869	1.02
GPRS 850	824.2	Body Back(10mm)	1.15	1.07	1.08
PCS 1900	1880	Body Worn Back (5mm)	1.08	1.04	1.04
WCDMA Band 2	1907.6	Body Worn Back (5mm)	1.12	1.02	1.10
WCDMA Band 5	836.6	Body Worn Back (5mm)	0.92	0.889	1.03

Note:

1. Second Repeated Measurement is not required since the ratio of the largest to smallest SAR for the original and first repeated measurement is not > 1.20.
2. The measured SAR results do not have to be scaled to the maximum tune-up tolerance to determine if repeated measurements are required.

SAR SIMULTANEOUS TRANSMISSION DESCRIPTION

Antennas Location:



Simultaneous Transmission:

Description of Simultaneous Transmit Capabilities		
Transmitter Combination	Simultaneous?	Hotspot?
GSM + WCDMA	×	×
GSM+LTE	×	×
GSM + Bluetooth	√	×
GSM + WLAN	√	√
WCDMA+LTE	×	×
WCDMA + Bluetooth	√	×
WCDMA + WLAN	√	√
LTE + Bluetooth	√	×
LTE + WLAN	√	√

Standalone SAR test exclusion considerations

Mode	Frequency (MHz)	Pavg (dBm)	Pavg (mW)	Distance (mm)	Calculated value	Threshold (1-g)	SAR Test Exclusion
WLAN	2472	9.8	9.55	0	3.0	3	YES
Bluetooth	2480	9	7.94	0	2.5	3	YES

NOTE:

The 1-g and 10-g SAR test exclusion thresholds for 100 MHz to 6 GHz at test separation distances ≤ 50 mm are determined by:

$$[(\text{max. power of channel, including tune-up tolerance, mW}) / (\text{min. test separation distance, mm})] \cdot$$

$$[\sqrt{f(\text{GHz})}] \leq 3.0 \text{ for 1-g SAR and } \leq 7.5 \text{ for 10-g extremity SAR, where}$$

1. f(GHz) is the RF channel transmit frequency in GHz.
2. Power and distance are rounded to the nearest mW and mm before calculation.
3. The result is rounded to one decimal place for comparison.
4. When the minimum test separation distance is < 5 mm, a distance of 5 mm is applied to determine SAR test Exclusion.

Standalone SAR estimation:

Mode	Frequency (MHz)	Pavg (dBm)	Pavg (mW)	Distance (mm)	Estimated 1-g (W/kg)
WLAN Head	2472	9.8	9.55	0	0.4
WLAN Body(Worn)	2472	9.8	9.55	5	0.4
WLAN Body	2472	9.8	9.55	10	0.2
BT Head	2480	9	7.94	0	0.333
BT Body(Worn)	2480	9	7.94	5	0.333
BT Body	2480	9	7.94	10	0.167

When standalone SAR test exclusion applies to an antenna that transmits simultaneously with other antennas, the standalone SAR must be estimated according to following to determine simultaneous transmission SAR test exclusion:

$$[(\text{max. power of channel, including tune-up tolerance, mW}) / (\text{min. test separation distance, mm})] \cdot [\sqrt{f(\text{GHz})/x}]$$

W/kg for test separation distances ≤ 50 mm;

where x = 7.5 for 1-g SAR.

When the minimum test separation distance is < 5 mm, a distance of 5 mm is applied to determine SAR test Exclusion

Simultaneous and Hotspot SAR test exclusion considerations:

Mode(SAR1+SAR2)	Position	Reported SAR(W/kg)		ΣSAR < 1.6W/kg
		SAR1	SAR2	
GSM 850+Bluetooth	Head Left Cheek	0.381	0.333	0.714
	Head Left Tilt	0.188	0.333	0.521
	Head Right Cheek	0.321	0.333	0.654
	Head Right Tilt	0.174	0.333	0.507
	Body Worn Back	0.91	0.333	1.243
	Body Back	1.195	0.167	1.362
	Body Left	0.588	0.167	0.755
	Body Right	0.592	0.167	0.759
	Body Bottom	0.24	0.167	0.407
PCS1900 +Bluetooth	Head Left Cheek	0.286	0.333	0.619
	Head Left Tilt	0.089	0.333	0.422
	Head Right Cheek	0.327	0.333	0.66
	Head Right Tilt	0.074	0.333	0.407
	Body Worn Back	1.11	0.333	1.443
	Body Back	0.703	0.167	0.87
	Body Left	0.175	0.167	0.342
	Body Right	0.297	0.167	0.464
	Body Bottom	0.793	0.167	0.96
WCDMA Band 2+Bluetooth	Head Left Cheek	0.288	0.333	0.621
	Head Left Tilt	0.123	0.333	0.456
	Head Right Cheek	0.479	0.333	0.812
	Head Right Tilt	0.103	0.333	0.436
	Body Worn Back	1.162	0.333	1.495
	Body Back	0.746	0.167	0.913
	Body Left	0.356	0.167	0.523
	Body Right	0.605	0.167	0.772
	Body Bottom	0.707	0.167	0.874
WCDMA Band 5+Bluetooth	Head Left Cheek	0.328	0.333	0.661
	Head Left Tilt	0.143	0.333	0.476
	Head Right Cheek	0.261	0.333	0.594
	Head Right Tilt	0.147	0.333	0.48
	Body Worn Back	1.018	0.333	1.351
	Body Back	0.671	0.167	0.838
	Body Left	0.528	0.167	0.695
	Body Right	0.507	0.167	0.674
	Body Bottom	0.242	0.167	0.409

Mode(SAR1+SAR2)	Position	Reported SAR(W/kg)		ΣSAR < 1.6W/kg
		SAR1	SAR2	
LTE Band 2+Bluetooth	Head Left Cheek	0.367	0.333	0.7
	Head Left Tilt	0.162	0.333	0.495
	Head Right Cheek	0.612	0.333	0.945
	Head Right Tilt	0.113	0.333	0.446
	Body Back	0.28	0.167	0.447
	Body Left	0.113	0.167	0.28
	Body Right	0.075	0.167	0.242
	Body Bottom	0.357	0.167	0.524
LTE Band 4+Bluetooth	Head Left Cheek	0.458	0.333	0.791
	Head Left Tilt	0.116	0.333	0.449
	Head Right Cheek	0.645	0.333	0.978
	Head Right Tilt	0.105	0.333	0.438
	Body Back	0.339	0.167	0.506
	Body Left	0.063	0.167	0.23
	Body Right	0.154	0.167	0.321
	Body Bottom	0.223	0.167	0.39
LTE Band 5+Bluetooth	Head Left Cheek	0.543	0.333	0.876
	Head Left Tilt	0.238	0.333	0.571
	Head Right Cheek	0.433	0.333	0.766
	Head Right Tilt	0.257	0.333	0.59
	Body Back	0.374	0.167	0.541
	Body Left	0.147	0.167	0.314
	Body Right	0.131	0.167	0.298
	Body Bottom	0.073	0.167	0.24
LTE Band 7+Bluetooth	Head Left Cheek	0.249	0.333	0.582
	Head Left Tilt	0.22	0.333	0.553
	Head Right Cheek	0.419	0.333	0.752
	Head Right Tilt	0.126	0.333	0.459
	Body Back	0.227	0.167	0.394
	Body Left	0.038	0.167	0.205
	Body Right	0.191	0.167	0.358
	Body Bottom	0.148	0.167	0.315

Mode(SAR1+SAR2)	Position	Reported SAR(W/kg)		ΣSAR < 1.6W/kg
		SAR1	SAR2	
GSM 850+ WLAN	Head Left Cheek	0.381	0.4	0.781
	Head Left Tilt	0.188	0.4	0.588
	Head Right Cheek	0.321	0.4	0.721
	Head Right Tilt	0.174	0.4	0.574
	Body Worn Back	0.91	0.4	1.31
GPRS 850 + WLAN (Hotspot)	Body Back	1.195	0.2	1.395
	Body Left	0.588	0.2	0.788
	Body Right	0.592	0.2	0.792
	Body Bottom	0.24	0.2	0.44
PCS1900 + WLAN	Head Left Cheek	0.286	0.4	0.686
	Head Left Tilt	0.089	0.4	0.489
	Head Right Cheek	0.327	0.4	0.727
	Head Right Tilt	0.074	0.4	0.474
	Body Worn Back	1.11	0.4	1.51
GPRS 1900 + WLAN (Hotspot)	Body Back	0.703	0.2	0.903
	Body Left	0.175	0.2	0.375
	Body Right	0.297	0.2	0.497
	Body Bottom	0.793	0.2	0.993
WCDMA Band 2+ WLAN	Head Left Cheek	0.288	0.4	0.688
	Head Left Tilt	0.123	0.4	0.523
	Head Right Cheek	0.479	0.4	0.879
	Head Right Tilt	0.103	0.4	0.503
	Body Worn Back	1.162	0.4	1.562
WCDMA Band 2+ WLAN (Hotspot)	Body Back	0.746	0.2	0.946
	Body Left	0.356	0.2	0.556
	Body Right	0.605	0.2	0.805
	Body Bottom	0.707	0.2	0.907
WCDMA Band 5+ WLAN	Head Left Cheek	0.328	0.4	0.728
	Head Left Tilt	0.143	0.4	0.543
	Head Right Cheek	0.261	0.4	0.661
	Head Right Tilt	0.147	0.4	0.547
	Body Worn Back	1.018	0.4	1.418
WCDMA Band 5+ WLAN (Hotspot)	Body Back	0.671	0.2	0.871
	Body Left	0.528	0.2	0.728
	Body Right	0.507	0.2	0.707
	Body Bottom	0.242	0.2	0.442

Mode(SAR1+SAR2)	Position	Reported SAR(W/kg)		ΣSAR < 1.6W/kg
		SAR1	SAR2	
LTE Band 2+ WLAN	Head Left Cheek	0.367	0.4	0.767
	Head Left Tilt	0.162	0.4	0.562
	Head Right Cheek	0.612	0.4	1.012
	Head Right Tilt	0.113	0.4	0.513
LTE Band 2+ WLAN (Hotspot)	Body Back	0.28	0.2	0.48
	Body Left	0.113	0.2	0.313
	Body Right	0.075	0.2	0.275
	Body Bottom	0.357	0.2	0.557
LTE Band 4+ WLAN	Head Left Cheek	0.458	0.4	0.858
	Head Left Tilt	0.116	0.4	0.516
	Head Right Cheek	0.645	0.4	1.045
	Head Right Tilt	0.105	0.4	0.505
LTE Band 4+ WLAN (Hotspot)	Body Back	0.339	0.2	0.539
	Body Left	0.063	0.2	0.263
	Body Right	0.154	0.2	0.354
	Body Bottom	0.223	0.2	0.423
LTE Band 5+ WLAN	Head Left Cheek	0.543	0.4	0.943
	Head Left Tilt	0.238	0.4	0.638
	Head Right Cheek	0.433	0.4	0.833
	Head Right Tilt	0.257	0.4	0.657
LTE Band 5+ WLAN (Hotspot)	Body Back	0.374	0.2	0.574
	Body Left	0.147	0.2	0.347
	Body Right	0.131	0.2	0.331
	Body Bottom	0.073	0.2	0.273
LTE Band 7+ WLAN	Head Left Cheek	0.249	0.4	0.649
	Head Left Tilt	0.22	0.4	0.62
	Head Right Cheek	0.419	0.4	0.819
	Head Right Tilt	0.126	0.4	0.526
LTE Band 7+ WLAN (Hotspot)	Body Back	0.227	0.2	0.427
	Body Left	0.038	0.2	0.238
	Body Right	0.191	0.2	0.391
	Body Bottom	0.148	0.2	0.348

Note:

1. Hotspot mode SAR is only required for the edges within 25mm from the transmitting antenna located.
2. Hotspot Mode is not feasible during voice calls.

Conclusion:

Sum of SAR: $\Sigma \text{SAR} < 1.6 \text{ W/kg}$ therefore simultaneous transmission SAR with Volume Scans is **not required**.

SAR Plots

Please Refer to the Attachment.

APPENDIX A MEASUREMENT UNCERTAINTY

The uncertainty budget has been determined for the measurement system and is given in the following Table.

Measurement uncertainty evaluation for IEEE1528-2013 SAR test

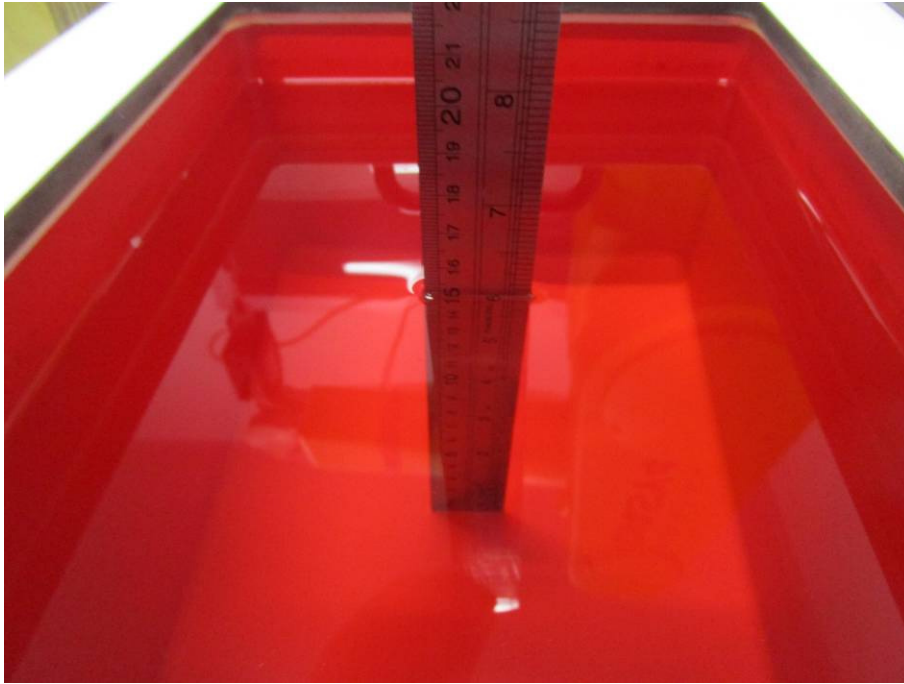
Source of uncertainty	Tolerance/uncertainty ± %	Probability distribution	Divisor	ci (1 g)	ci (10 g)	Standard uncertainty ± %, (1 g)	Standard uncertainty ± %, (10 g)
Measurement system							
Probe calibration	6.55	N	1	1	1	6.6	6.6
Axial Isotropy	4.7	R	√3	1	1	2.7	2.7
Hemispherical Isotropy	9.6	R	√3	0	0	0.0	0.0
Boundary effect	1.0	R	√3	1	1	0.6	0.6
Linearity	4.7	R	√3	1	1	2.7	2.7
Detection limits	1.0	R	√3	1	1	0.6	0.6
Readout electronics	0.3	N	1	1	1	0.3	0.3
Response time	0.0	R	√3	1	1	0.0	0.0
Integration time	0.0	R	√3	1	1	0.0	0.0
RF ambient conditions – noise	1.0	R	√3	1	1	0.6	0.6
RF ambient conditions–reflections	1.0	R	√3	1	1	0.6	0.6
Probe positioner mech. Restrictions	0.8	R	√3	1	1	0.5	0.5
Probe positioning with respect to phantom shell	6.7	R	√3	1	1	3.9	3.9
Post-processing	2.0	R	√3	1	1	1.2	1.2
Test sample related							
Test sample positioning	2.8	N	1	1	1	2.8	2.8
Device holder uncertainty	6.3	N	1	1	1	6.3	6.3
Drift of output power	5.0	R	√3	1	1	2.9	2.9
Phantom and set-up							
Phantom uncertainty (shape and thickness tolerances)	4.0	R	√3	1	1	2.3	2.3
Liquid conductivity target)	5.0	R	√3	0.64	0.43	1.8	1.2
Liquid conductivity meas.)	2.5	N	1	0.64	0.43	1.6	1.1
Liquid permittivity target)	5.0	R	√3	0.6	0.49	1.7	1.4
Liquid permittivity meas.)	2.5	N	1	0.6	0.49	1.5	1.2
Combined standard uncertainty		RSS				12.2	12.0
Expanded uncertainty 95 % confidence interval)						24.3	23.9

Measurement uncertainty evaluation for IEC62209-2 SAR test

Source of uncertainty	Tolerance/uncertainty ± %	Probability distribution	Divisor	ci (1 g)	ci (10 g)	Standard uncertainty ± %, (1 g)	Standard uncertainty ± %, (10 g)
Measurement system							
Probe calibration	6.55	N	1	1	1	6.6	6.6
Axial Isotropy	4.7	R	√3	1	1	2.7	2.7
Hemispherical Isotropy	9.6	R	√3	0	0	0.0	0.0
Linearity	4.7	R	√3	1	1	2.7	2.7
Modulation Response	0.0	R	√3	1	1	0.0	0.0
Detection limits	1.0	R	√3	1	1	0.6	0.6
Boundary effect	1.0	R	√3	1	1	0.6	0.6
Readout electronics	0.3	N	1	1	1	0.3	0.3
Response time	0.0	R	√3	1	1	0.0	0.0
Integration time	0.0	R	√3	1	1	0.0	0.0
RF ambient conditions – noise	1.0	R	√3	1	1	0.6	0.6
RF ambient conditions–reflections	1.0	R	√3	1	1	0.6	0.6
Probe positioner mech. Restrictions	0.8	R	√3	1	1	0.5	0.5
Probe positioning with respect to phantom shell	6.7	R	√3	1	1	3.9	3.9
Post-processing	2.0	R	√3	1	1	1.2	1.2
Test sample related							
Device holder Uncertainty	6.3	N	1	1	1	6.3	6.3
Test sample positioning	2.8	N	1	1	1	2.8	2.8
Power scaling	4.5	R	√3	1	1	2.6	2.6
Drift of output power	5.0	R	√3	1	1	2.9	2.9
Phantom and set-up							
Phantom uncertainty (shape and thickness tolerances)	4.0	R	√3	1	1	2.3	2.3
Algorithm for correcting SAR for deviations in permittivity and conductivity	1.9	N	1	1	0.84	1.1	0.9
Liquid conductivity (meas.)	2.5	N	1	0.64	0.43	1.6	1.1
Liquid permittivity (meas.)	2.5	N	1	0.6	0.49	1.5	1.2
Temp. unc. - Conductivity	1.7	R	√3	0.78	0.71	0.8	0.7
Temp. unc. - Permittivity	0.3	R	√3	0.23	0.26	0.0	0.0
Combined standard uncertainty		RSS				12.2	12.1
Expanded uncertainty 95 % confidence interval)						24.5	24.2

APPENDIX B EUT TEST POSITION PHOTOS

Liquid depth $\geq 15\text{cm}$



Body Worn Back Setup Photo(5mm)



Body Back Setup Photo(10mm)



Body Right Setup Photo(10mm)



Body Left Setup Photo(10mm)



Body Bottom Setup Photo(10mm)



Head Left Cheek Setup Photo



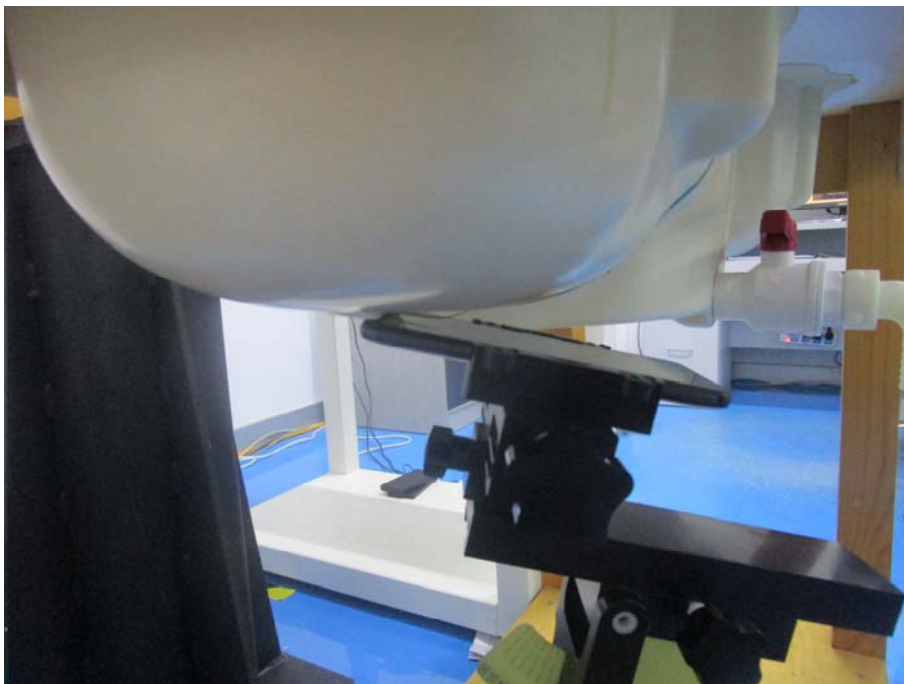
Head Left Tilt Setup Photo



Head Right Cheek Setup Photo



Head Right Tilt Setup Photo



APPENDIX C CALIBRATION CERTIFICATES

Please Refer to the Attachment.

******* END OF REPORT *******